

Lessons Learned

Data Viz & Communicating Research

HELLO!

I am Jo Klein

GIS & Data Visualization Librarian

UNC Greensboro

ejklein@uncg.edu

Academic Year	Event	Category	Data Science
2011	Start BS in Biology at UMBC	Natural Sciences	0
2012	Student Volunteer in Lohr Lab	Natural Sciences	1
2012	Student Assistant at UMBC Library	Library Science	1
2013	Student Research at RMBL	Natural Sciences	1
2014	Graduate with BS in Biology	Natural Sciences	0
2014	Apply to Ecology MS Programs	Natural Sciences	0
2014	Student Assistantship at UMBC Library Ends	Library Science	0
2016	Contractor for Epidemiology Branch at US EPA	Natural Sciences	0
2016	Start MLIS at UNCG	Library Science	0
2017	Train in & Conduct GIS Analysis	Natural Sciences	1
2017	Seminar in Special Collections	Library Science	1
2018	Coordinate Switch to Digital Lab Notebooks	Natural Sciences	1
2018	Coursework in Metadata & Digital Libraries	Library Science	1
2018	Practicum at Elon Archives & Special Collections	Library Science	1
2019	Contractor for Epidemiology Branch at US EPA Ends	Natural Sciences	0
2019	Graduate with MLIS	Library Science	0
2019	GIS & Data Visualization Librarian at UNCG	Library Science, Natural Sciences	1

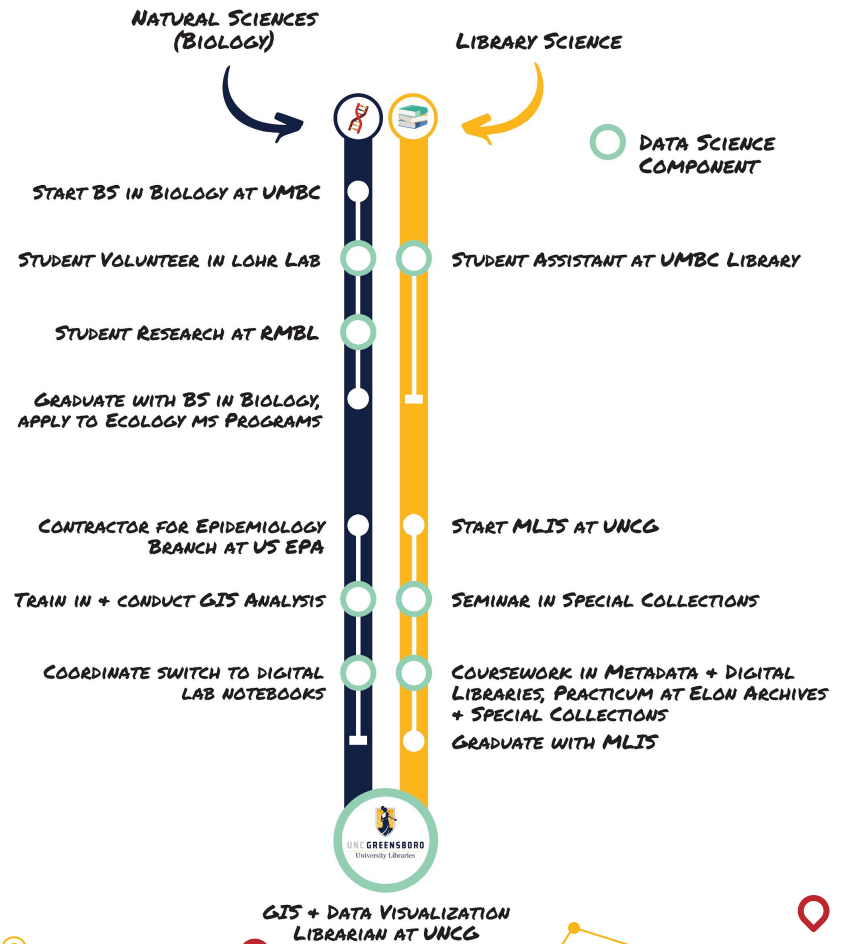


Fig. 2: The relationships between frost (F) and no frost (NF) treatments and spur length (a) and peak bloom date (b) in *D. muttallianum*. Significance noted with asterisk.

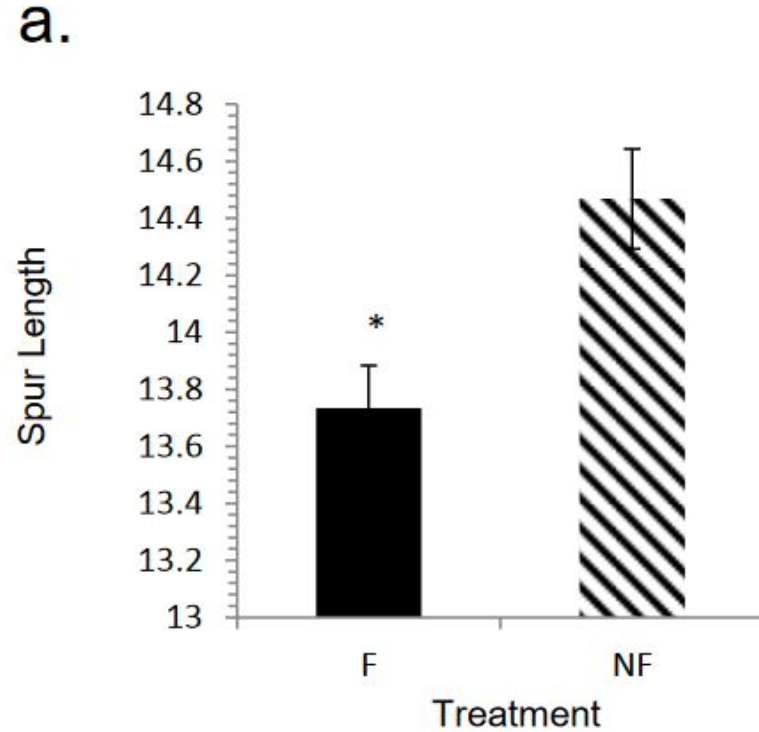
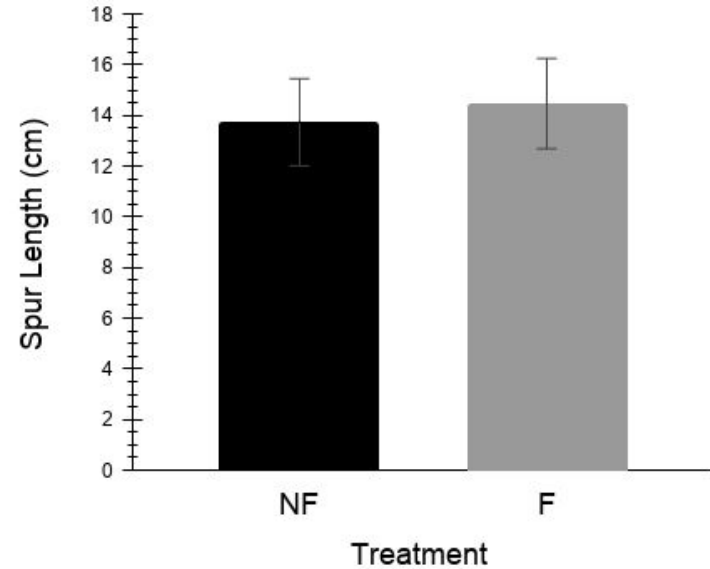
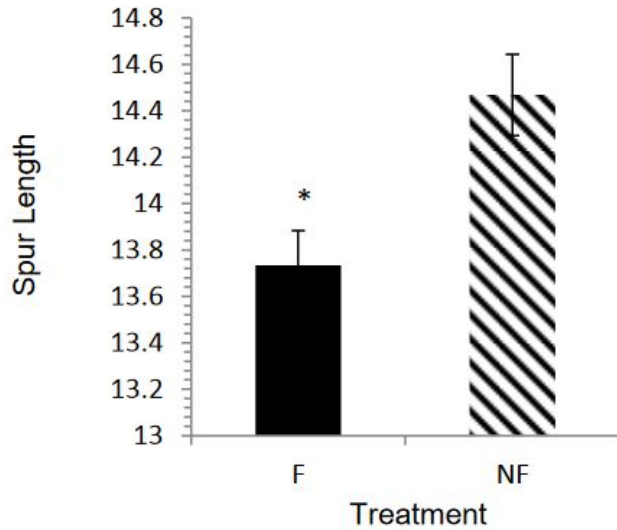


Fig. 2: The relationships between frost (F) and no frost (NF) treatments and spur length (a) and peak bloom date (b) in *D. muttallianum*. Significance noted with asterisk.

a.



Summarize or
simplify findings

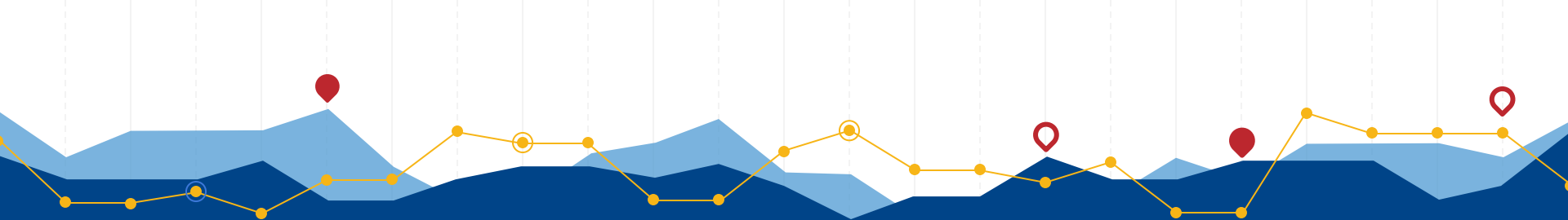


Start a conversation

Report on a
target or goal



Investigate where your
piece fits in the puzzle



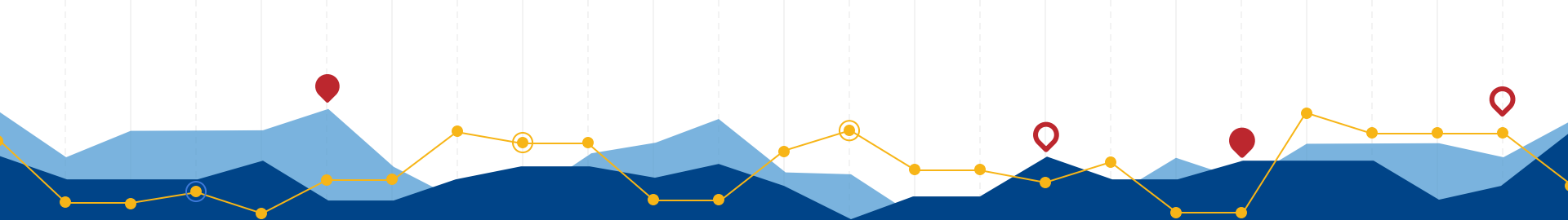
- Choose the most effective chart or visualization type for the data *and* the message
- Use visual design elements that are accessible for your intended audience
- Add context where necessary to complement the data and provide a complete message
- Accurately and ethically represent your data without misleading or drawing meaning where there is none.



The GIS & Data Viz Librarian

Learn & Connect

- Your Data Viz Librarian
- Storytelling with Data: storytellingwithdata.com
- Data Visualization Society: datavisualizationsociety.com
- Visualizing the Future Symposia: visualizingthefuture.github.io



- Choose the most effective chart or visualization type for the data *and* the message
- Use visual design elements that are accessible for your intended audience
- Add context where necessary to complement the data and provide a complete message
- Accurately and ethically represent your data without misleading or drawing meaning where there is none.