



## **Cordilleran Ice-Sheet Growth Fueled Primary Productivity In The Gulf Of Alaska, Northeast Pacific Ocean**

By: Juliane Müller, Oscar Romero, **Ellen A. Cowan**, Erin L. McClymont, Matthias Forwick, Hirofumi Asahi, Christian März, Christopher M. Moy, Itsuki Suto, Alan Mix, and Joseph Stoner

### **Abstract**

Fertilization of the ocean by eolian dust and icebergs is an effective mechanism to enhance primary productivity. In particular, high-nutrient, low-chlorophyll (HNLC) areas where phytoplankton growth is critically iron-limited, such as the subarctic Pacific Ocean and the Southern Ocean, are proposed to respond to increases in bioavailable Fe supply with enhanced phytoplankton productivity and carbon export to the seafloor. While Fe-fertilization from dust is widely acknowledged to explain a higher export production during glacial periods in the Southern Ocean, paleoceanographic records supporting links between productivity and eolian dust and/or icebergs in the North Pacific are scarce. By combining independent proxies indicative of ice-sheet dynamics and ocean productivity from a single marine sedimentary record (Integrated Ocean Drilling Program [IODP] Site U1417), we present a comprehensive data set of phytoplankton response to different fertilization mechanisms in the subarctic northeast Pacific between 1.5 and 0.5 Ma, including the Mid Pleistocene Transition. Importantly, the timing of the fertilization events is more strongly controlled by local ice-sheet extent than by glacial-interglacial climate variability. Our findings indicate that fertilization by glacial debris results in productivity events in HNLC areas adjacent to ice sheets, and that this mechanism may represent an important, yet rarely considered, driver of phytoplankton growth.

Juliane Müller, Oscar Romero, **Ellen A. Cowan**, Erin L. McClymont, Matthias Forwick, Hirofumi Asahi, Christian März, Christopher M. Moy, Itsuki Suto, Alan Mix, Joseph Stoner; Cordilleran ice-sheet growth fueled primary productivity in the Gulf of Alaska, northeast Pacific Ocean. *Geology* ; 46 (4): 307–310. doi: <https://doi.org/10.1130/G39904.1>. Publisher version of record available at: <https://pubs.geoscienceworld.org/gsa/geology/article-standard/46/4/307/528310/Cordilleran-ice-sheet-growth-fueled-primary>

# Cordilleran ice-sheet growth fueled primary productivity in the Gulf of Alaska, northeast Pacific Ocean

Juliane Müller<sup>1,2</sup>, Oscar Romero<sup>3</sup>, Ellen A. Cowan<sup>4</sup>, Erin L. McClymont<sup>5</sup>, Matthias Forwick<sup>6</sup>, Hirofumi Asahi<sup>7</sup>, Christian März<sup>8</sup>, Christopher M. Moy<sup>9</sup>, Itsuki Suto<sup>10</sup>, Alan Mix<sup>11</sup>, and Joseph Stoner<sup>11</sup>

<sup>1</sup>Alfred Wegener Institute, Helmholtz Centre for Polar and Marine Research, 27568 Bremerhaven, Germany

<sup>2</sup>Department of Geosciences, University of Bremen, 28359 Bremen, Germany

<sup>3</sup>MARUM, Center for Marine and Environmental Sciences, 28359 Bremen Germany

<sup>4</sup>Department of Geological and Environmental Sciences, Appalachian State University, Boone, North Carolina 28608, USA

<sup>5</sup>Department of Geography, Durham University, Durham DH1 3LE, UK

<sup>6</sup>Department of Geosciences, UiT The Arctic University of Norway in Tromsø, Langnes N-9037, Tromsø, Norway

<sup>7</sup>Korea Polar Research Institute, Yeonsu-gu, Incheon 406-840, South Korea

<sup>8</sup>School of Earth and Environment, University of Leeds, Leeds LS2 9JT, UK

<sup>9</sup>Department of Geology, University of Otago, Dunedin 9054, New Zealand

<sup>10</sup>Department of Earth and Planetary Sciences, Nagoya University, Chikusa-ku, Nagoya, Japan

<sup>11</sup>Oregon State University, Corvallis, Oregon 97331, USA

## ABSTRACT

**Fertilization of the ocean by eolian dust and icebergs is an effective mechanism to enhance primary productivity. In particular, high-nutrient, low-chlorophyll (HNLC) areas where phytoplankton growth is critically iron-limited, such as the subarctic Pacific Ocean and the Southern Ocean, are proposed to respond to increases in bioavailable Fe supply with enhanced phytoplankton productivity and carbon export to the seafloor. While Fe-fertilization from dust is widely acknowledged to explain a higher export production during glacial periods in the Southern Ocean, paleoceanographic records supporting links between productivity and eolian dust and/or icebergs in the North Pacific are scarce. By combining independent proxies indicative of ice-sheet dynamics and ocean productivity from a single marine sedimentary record (Integrated Ocean Drilling Program [IODP] Site U1417), we present a comprehensive data set of phytoplankton response to different fertilization mechanisms in the subarctic northeast Pacific between 1.5 and 0.5 Ma, including the Mid Pleistocene Transition. Importantly, the timing of the fertilization events is more strongly controlled by local ice-sheet extent than by glacial-interglacial climate variability. Our findings indicate that fertilization by glacial debris results in productivity events in HNLC areas adjacent to ice sheets, and that this mechanism may represent an important, yet rarely considered, driver of phytoplankton growth.**

## INTRODUCTION

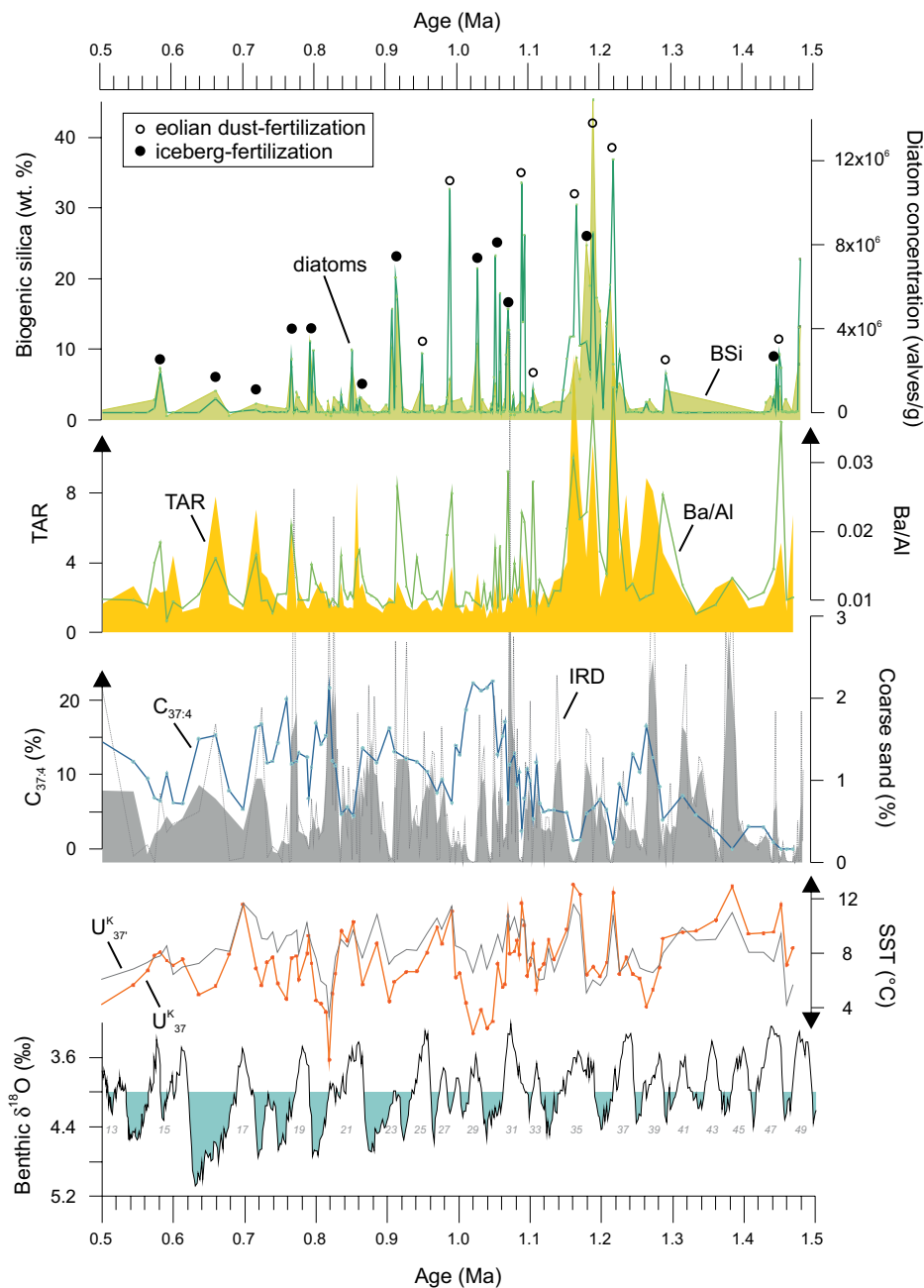
The stimulation of primary productivity through the addition of Fe to the ocean surface, particularly in high-nutrient, low-chlorophyll (HNLC) areas, significantly contributes to ocean carbon sequestration (Martin, 1990; Sigman et al., 2010). Field observations and laboratory experiments imply that, in addition to the input of Fe-rich eolian dust (Martin et al., 1989), delivery of macronutrients and micronutrients and vertical mixing processes in the vicinity of icebergs foster phytoplankton growth in high-latitude oceans (Duprat et al., 2016; Smith et al., 2007). Such *in situ* measurements and remote sensing data suggest a potentially important role for icebergs and eolian dust in driving primary productivity in HNLC regions, but provide only a snapshot view of modern ocean biogeochemical feedbacks. Paleoreconstructions, in turn, permit an integrated view and evaluation of the

role of these fertilization mechanisms on export production. Owing to its proximity to a former major Northern Hemisphere ice sheet, the Gulf of Alaska (GoA; northeast Pacific Ocean) is an area with vigorous temperate glacial erosion of Fe-rich rocks (Gulick et al., 2015). Here, we present the first reconstruction of phytoplankton productivity in the GoA linked to Fe inputs from glacial debris. We focus on sediments spanning the last important climate transition in Earth's history, the Mid-Pleistocene Transition (MPT), when the Northern Cordilleran Ice Sheet (NCIS) experienced a significant expansion (Gulick et al., 2015). Although the exact timing and cause(s) of the MPT are intensely discussed (Clark et al., 2006; Elderfield et al., 2012), the potential for biogeochemical feedbacks operating in the high-latitude oceans during this crucial time interval of Northern Hemisphere ice-sheet growth remains poorly studied. This is

the first assessment of (subpolar) Fe-fertilization mechanisms across the MPT from outside the Southern Ocean (Lamy et al., 2014; Martínez-García et al., 2011).

We present a multiproxy record including geochemical, micropaleontological, and sedimentological data obtained from Integrated Ocean Drilling Program (IODP) Site U1417 in the GoA (56°57'N, 147°6'W, 4200 m water depth; Item DR1 in the GSA Data Repository<sup>1</sup>; Jaeger et al., 2014). Our results record the interactions between sea-surface temperature (SST), the input of terrigenous material by both eolian and ice-rafting processes, and export productivity for multiple glacial-interglacial cycles between 1.5 and 0.5 Ma (Fig. 1). In the absence of eolian dust measurements, elevated contents of land plant-specific long-chain *n*-alkanes (depicted by higher terrigenous-aquatic ratios [TARs]; Meyers, 1997) are used to track terrestrial dust input (Simoneit, 1977). In addition, icebergs may carry high amounts of terrigenous organic matter to distal ocean sites, and are considered as a further transport agent of these leaf-wax compounds (Stein et al., 2009; Villanueva et al., 1997). Accordingly, at Site U1417, elevated TAR values that coincide with at ice-rafted debris (IRD) maxima suggest an ice rafting of leaf-wax lipids, while maximum TAR values accompanied by IRD minima indicate an

<sup>1</sup>GSA Data Repository item 2018088, Item DR1 (location of IODP Site U1417 in the Gulf of Alaska); Item DR2 (Site U1417 age model and applied analytical methods); Item DR3 (allocation of eolian dust- and iceberg-fertilization events at Site U1417); and Item DR4 (alternate Fe input through volcanic ash and/or mesoscale eddies), is available online at <http://www.geosociety.org/datarepository/2018/> or on request from [editing@geosociety.org](mailto:editing@geosociety.org).



**Figure 1. Records of phytoplankton productivity (diatom concentration, biogenic silica [BSi] content, and Ba/Al), terrigenous-aquatic ratio (TAR), ice-rafted debris (IRD) deposition (3-point average of wt% coarse sand grains), and sea-surface temperature (SST) ( $U_{37}^K$ ,  $U_{37}'$ ,  $\%C_{37:4}$  alkenone) at Integrated Ocean Drilling Program Site U1417 compared to the  $\delta^{18}O$  isotope stack (Lisiecki and Raymo, 2005) over 1.5–0.5 Ma. Blue shadings are glacial intervals. Filled and hollow circles are high-productivity events stimulated by iceberg fertilization and eolian dust fertilization, respectively. Gray numbers are Marine Isotope Stages (MIS).**

airborne transport of these compounds. From the consistent pattern in concurrently high marine productivity indicators and high TAR values, we deduce that enhanced marine productivity was directly related to the input of terrigenous matter. Details on individual analytical methods and the age model are provided in Item DR2.

### SEA-SURFACE CONDITIONS AND DIFFERENT Fe-FERTILIZATION

#### MECHANISMS IN THE GULF OF ALASKA

At Site U1417, intervals of lower SSTs and more polar waters ( $\%C_{37:4}$  alkenone) often coincide with higher deposition of IRD (e.g., Marine Isotope Stages [MIS] 39, 30, and 20), indicating a direct link between GoA sea-surface conditions and NCIS dynamics. A distinct variability in diatom abundances, biogenic silica (opal; BSi) content and, the Ba/Al ratio is considered to reflect

abrupt phytoplankton productivity changes at Site U1417 (Fig. 1). Despite relatively warm SSTs prior to the MPT (>1.2 Ma), the occurrence of diatoms was confined to short-lived events, and a significant rise in diatom abundance and BSi content occurred only at the onset of the MPT (1.22 Ma, MIS 37; Fig. 1). The association between the biosiliceous signal and SST is not consistent over the entire record, and SST changes do not appear to be a primary driver of diatom productivity. However, both diatom and BSi signals are strongly linked to elevated Ba/Al values, recording increased export productivity (Jaccard et al., 2010), and to higher TAR values (Fig. 1). Today, significant amounts of Fe-rich glacial silt are deposited along glaciofluvial river banks and at glacier termini along south Alaskan coastal areas, and glacial rock flour is transported beyond the continental shelf into Fe-limited pelagic waters during dust storms (Crusius et al., 2011; Muhs et al., 2016). Evidently, the eolian transport of this glacial flour-derived dust via strong northerly winds is an important mechanism for the supply of bioavailable Fe to foster phytoplankton blooms in the GoA (Crusius et al., 2011, 2017). We, hence, argue that the TAR peaks coinciding with diatom, BSi, and Ba/Al maxima and IRD minima at Site U1417 reflect intervals of enhanced eolian export of leaf-wax lipids together with Fe-rich Alaskan dust, leading to productivity increases in the GoA across the MPT (e.g., at 1.22, 1.15, and 0.99 Ma; Fig. 1; Item DR3). Similarly, McDonald et al. (1999) proposed that late Pleistocene diatom productivity events at Ocean Drilling Program [ODP] Site 887 (54°21.9'N, 148°26.8'W, 3633 m) could have been promoted by Fe supply via dust.

In addition to dust fertilization, we suggest that ice rafting of glacial Fe-rich debris (transported together with glacially reworked organic matter containing leaf-wax lipids) also stimulated productivity at IODP Site U1417. Intervals characterized by enhanced IRD deposition and high TAR, diatom, BSi, and Ba/Al values occurred at, e.g., 1.05, 0.91, 0.77, and 0.66 Ma (Fig. 1; Item DR3). Recent observations highlight the importance of Fe fertilization of pelagic ecosystems from icebergs, accounting for up to 20% of the total carbon export in the Southern Ocean (Duprat et al., 2016; Smith et al., 2007). The coincidence of ice rafting and elevated marine productivity events in the GoA suggests that this mechanism also operated during the MPT in the subpolar northeast Pacific Ocean. In addition to dust- and iceberg fertilization, Fe supply via mesoscale eddies (Crawford et al., 2007) and volcanic ash (Hamme et al., 2010) may have promoted phytoplankton blooms in the GoA. However, we consider these mechanisms of only minor importance at Site U1417 (see Item DR4).

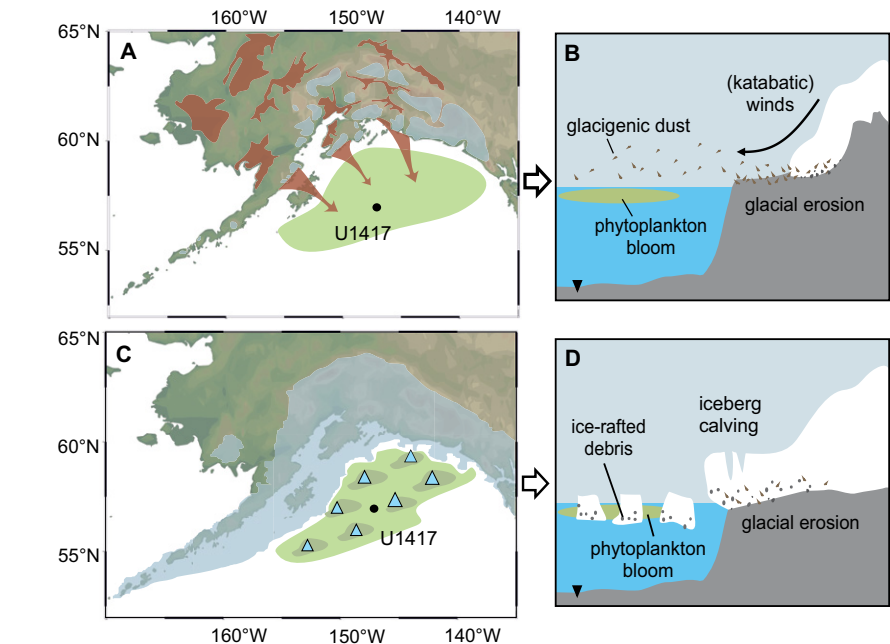
From the early MPT toward the late MPT (ca. 1.2–0.6 Ma), we note a decrease in predominantly

dust-fertilized productivity pulses, while iceberg fertilization sustained. This transition could result from an overall reduction in dust export owing to the persistent expansion of the NCIS (sealing central Alaskan dust [loess] deposits) and/or a change in atmospheric circulation diverting Alaskan storm tracks. Deposition of lithic particles by ice rafting, however, does not *per se* relate to a higher export production in the GoA, and we argue that additional factors impacted ocean productivity (e.g., nitrate depletion; Galbraith et al., 2008). Peaks in IRD at 1.27 or 0.82 Ma, for example, do not coincide with higher Ba/Al or opal values but an enhanced abundance of the  $C_{37:4}$  alkenone (Fig. 1), pointing to a significantly cooler ocean surface.

## FURTHER IMPLICATIONS

With regard to the overall environmental evolution in the subpolar northeast Pacific Ocean, we suggest that the diatom and BSi peaks at 1.22 Ma mark a transition when NCIS growth and, hence, the production and export of glaciogenic dust led to an effective Fe fertilization in the adjacent GoA. Whereas eolian dust fertilization dominated during intervals of reduced glacier extent (i.e., when coastal plains and glaciogenic silt deposits were subaerially exposed; Figs. 2A and 2B), iceberg fertilization occurred during intervals of enhanced glaciation when the NCIS terminated on the Alaskan continental shelf and discharged icebergs to Site U1417 (Figs. 2C and 2D). We note that, during the latter intervals, strong katabatic winds may have sustained an (airborne) export of dust from areas that remained ice-free (Item DR3).

Interestingly, the higher dust input at Site U1417 at ca. 1.22 Ma coincides with an enormous increase in dust delivery to the subantarctic Atlantic Ocean (Martínez-García et al., 2011). Ocean cooling, as well as increasing latitudinal temperature gradients, are considered to have accounted for an equatorward movement of oceanic fronts and a strengthened atmospheric circulation, leading to a higher dust export to the subantarctic Southern Ocean during the MPT (Kemp et al., 2010; Martínez-García et al., 2011; McClymont et al., 2013). We suggest that the expansion of polar waters in the high northern latitudes and the growth of the NCIS (affecting surface albedo and orography) could have induced similar atmospheric shifts promoting dust export events in the GoA at the onset of the MPT. Comparisons between western and eastern records of subpolar North Pacific paleo-productivity, however, reveal that although SSTs in both areas developed in a similar fashion, the patterns of Mid-Pleistocene primary productivity did not. While export production generally decreased in the Bering Sea due to an increase in sea ice cover (Kim et al., 2014), the productivity events observed in the GoA point to an efficient, yet sporadic, ocean fertilization from the input



**Figure 2. Integrated Ocean Drilling Program Site U1417 and different Mid-Pleistocene environmental settings in the study area, and associated fertilization mechanisms. Brown shadings are modern Alaskan loess deposits (after Muhs et al., 2016). A,B: Reduced ice-sheet coverage (pale blue shadings) and a predominantly eolian export of glaciogenic dust to Site U1417. C,D: Periods of an extended Northern Cordilleran Ice Sheet (NCIS) (C; after Kaufman et al., 2011) with marine terminating glaciers and ice rafting of glaciogenic debris across the Gulf of Alaska. Green shadings are assumed area of dust- and iceberg-fertilized productivity in the Gulf of Alaska through the Mid-Pleistocene Transition.**

of NCIS-sourced glaciogenic terrestrial matter (and Fe) across the MPT.

We note that the productivity pulses at Site U1417 are neither exclusively confined to glaciogenic nor to interglacials. This pattern contrasts to the western subarctic Pacific Ocean and the Bering Sea, where BSi production increased primarily during interglacials (Kim et al., 2014).

The productivity pulses at Site U1417 may reflect local feedback mechanisms between south Alaskan glacier dynamics (controlling ice-proximal dust production and dispersal), and an immediate response of the marine ecosystem, yet they highlight potentially relevant mechanisms to elucidate hitherto neglected interactions in the land-ocean-atmosphere system during glacial-interglacial transitions. We propose the GoA as a case example of a Pleistocene ice-proximal marine environment where ice-sheet dynamics exhibited a significant control on primary productivity, and potentially also  $CO_2$  draw-down. In fact, with the intensification of Pleistocene Northern Hemisphere glaciation and sea-level lowering, extensive sub-aerial pro-glacial (coastal) outwash plains developed not only in south Alaska but also along the Laurentide Ice Sheet and European Ice Sheets, and these areas should be considered as potentially important sources of Fe-bearing glaciogenic silt (Bullard et al., 2016) for areas where seasonal Fe-limitation

restricts phytoplankton growth (Moore et al., 2006; Nielsdóttir et al., 2009). Further exploration of sedimentary archives from high-latitude ocean areas adjacent to (paleo) ice sheets that permit correlations between productivity proxies and terrigenous compounds are required to evaluate the potential impacts of glaciogenic dust- and iceberg-fertilization on phytoplankton productivity across the MPT and beyond. Importantly, such data would provide for a quantitative assessment of whether these processes could have accounted for an amplification of glacial-interglacial cycles, or if they even contributed to an appreciable  $CO_2$  draw-down during the MPT.

## ACKNOWLEDGMENTS

We thank the International Ocean Discovery Program U.S. Implementing Organization (IODP-USIO) and the captain and crew of the D/V *Joides Resolution*. Funding was provided by the German Research Foundation (DFG) (MU3670/1–2); a European Consortium for Ocean Research Drilling (ECORD) Research Grant and Helmholtz Association Grant VH-NG 1101; from the Natural Environment Research Council (IODP Rapid Response Award, NE/L002426/1) and a Philip Leverhulme Prize; from U.S. National Science Foundation award OCE-1434945 and a post-expedition award from the U.S. Science Support Program of the IODP; from Korea Polar Research Institute's Basic Research Project (PE16062) and a National Research Foundation of Korea Grant funded by the Korean Government (2015M1A5A1037243); from IODP After Cruise Research Program from the Japan Agency



for Marine-Earth Science and Technology (H28–01), and from Japan Society for the Promotion of Science KAKENHI Grant JP26281006. We thank three anonymous reviewers for constructive comments.

## REFERENCES CITED

- Bullard, J.E., et al., 2016, High-latitude dust in the Earth system: Reviews of Geophysics, v. 54, p. 447–485, <https://doi.org/10.1002/2016RG000518>.
- Clark, P.U., Archer, D., Pollard, D., Blum, J.D., Rial, J.A., Brovkin, V., Mix, A.C., Piasias, N.G., and Roy, M., 2006, The middle Pleistocene transition: Characteristics, mechanisms, and implications for long-term changes in atmospheric  $p\text{CO}_2$ : Quaternary Science Reviews, v. 25, p. 3150–3184, <https://doi.org/10.1016/j.quascirev.2006.07.008>.
- Crawford, W.R., Brickley, P.J., and Thomas, A.C., 2007, Mesoscale eddies dominate surface phytoplankton in northern Gulf of Alaska: Progress in Oceanography, v. 75, p. 287–303, <https://doi.org/10.1016/j.pocean.2007.08.016>.
- Crusius, J., Schroth, A.W., Gassó, S., Moy, C.M., Levy, R.C., and Gatica, M., 2011, Glacial flour dust storms in the Gulf of Alaska: Hydrologic and meteorological controls and their importance as a source of bioavailable iron: Geophysical Research Letters, v. 38, L06602, <https://doi.org/10.1029/2010GL046573>.
- Crusius, J., Schroth, A.W., Resing, J.A., Cullen, J., and Campbell, R.W., 2017, Seasonal and spatial variabilities in northern Gulf of Alaska surface water iron concentrations driven by shelf sediment resuspension, glacial meltwater, a Yakutat eddy, and dust: Global Biogeochemical Cycles, v. 31, p. 942–960, <https://doi.org/10.1002/2016GB005493>.
- Duprat, L.P.A.M., Bigg, G.R., and Wilton, D.J., 2016, Enhanced Southern Ocean marine productivity due to fertilization by giant icebergs: Nature Geoscience, v. 9, p. 219–221, <https://doi.org/10.1038/ngeo2633>; corrigendum available at <https://doi.org/10.1038/ngeo2809>.
- Elderfield, H., Ferretti, P., Greaves, M., Crowhurst, S., McCave, I.N., Hodell, D., and Piotrowski, A.M., 2012, Evolution of ocean temperature and ice volume through the Mid-Pleistocene Climate Transition: Science, v. 337, p. 704–709, <https://doi.org/10.1126/science.1221294>.
- Galbraith, E.D., Kienast, M., Jaccard, S.L., Pedersen, T.F., Brunelle, B.G., Sigman, D.M., and Kiefer, T., 2008, Consistent relationship between global climate and surface nitrate utilization in the western subarctic Pacific throughout the last 500 ka: Paleoceanography, v. 23, PA2212, <https://doi.org/10.1029/2007PA001518>.
- Gulick, S.P.S., et al., 2015, Mid-Pleistocene climate transition drives net mass loss from rapidly uplifting St. Elias Mountains, Alaska: Proceedings of the National Academy of Sciences of the United States of America, v. 112, p. 15042–15047, <https://doi.org/10.1073/pnas.1512549112>.
- Hamme, R.C., et al., 2010, Volcanic ash fuels anomalous plankton bloom in subarctic northeast Pacific: Geophysical Research Letters, v. 37, L19604, <https://doi.org/10.1029/2010GL044629>.
- Jaccard, S.L., Galbraith, E.D., Sigman, D.M., and Haug, G.H., 2010, A pervasive link between Antarctic ice core and subarctic Pacific sediment records over the past 800 kyrs: Quaternary Science Reviews, v. 29, p. 206–212, <https://doi.org/10.1016/j.quascirev.2009.10.007>.
- Jaeger, J.M., Gulick, S.P.S., and LeVay, L.J., and the Expedition 341 Scientists, 2014, Methods, in Jaeger, J.M., et al., eds., Proceedings of the Integrated Ocean Drilling Program, v. 341: College Station, Texas, Integrated Ocean Drilling Program, <https://doi.org/10.2204/iodp.proc.341.101.2014>.
- Kaufman, D.S., Young, N.E., Briner, J.P., and Manley, W.F., 2011, Alaska Palaeo-Glacier Atlas (Version 2), in Ehlers, J., et al., eds., Developments in Quaternary Sciences: Amsterdam, Elsevier, v. 15, p. 427–445.
- Kemp, A.E.S., Grigoriou, I., Pearce, R.B., and Naveira Garabato, A.C., 2010, Migration of the Antarctic Polar Front through the mid-Pleistocene transition: Evidence and climatic implications: Quaternary Science Reviews, v. 29, p. 1993–2009, <https://doi.org/10.1016/j.quascirev.2010.04.027>.
- Kim, S., Takahashi, K., Khim, B.-K., Kanematsu, Y., Asahi, H., and Ravelo, A.C., 2014, Biogenic opal production changes during the Mid-Pleistocene Transition in the Bering Sea (IODP Expedition 323 Site U1343): Quaternary Research, v. 81, p. 151–157, <https://doi.org/10.1016/j.yqres.2013.10.001>.
- Lamy, F., Gersonde, R., Winckler, G., Esper, O., Jaeschke, A., Kuhn, G., Ullermann, J., Martinez-Garcia, A., Lambert, F., and Kilian, R., 2014, Increased dust deposition in the Pacific Southern Ocean during glacial periods: Science, v. 343, p. 403–407, <https://doi.org/10.1126/science.1245424>.
- Lisiecki, L.E., and Raymo, M.E., 2005, A Pliocene-Pleistocene stack of 57 globally distributed benthic  $\delta^{18}\text{O}$  records: Paleoceanography, v. 20, PA1003, <https://doi.org/10.1029/2004PA001071>.
- Martin, J.H., 1990, Glacial-interglacial  $\text{CO}_2$  change: The Iron Hypothesis: Paleoceanography, v. 5, p. 1–13, <https://doi.org/10.1029/PA005i001p00001>.
- Martin, J.H., Gordon, R.M., Fitzwater, S., and Broenkow, W.W., 1989, Vertex: Phytoplankton/iron studies in the Gulf of Alaska: Deep-Sea Research: Part A, Oceanographic Research Papers, v. 36, p. 649–680, [https://doi.org/10.1016/0198-0149\(89\)90144-1](https://doi.org/10.1016/0198-0149(89)90144-1).
- Martínez-García, A., Rosell-Mele, A., Jaccard, S.L., Geibert, W., Sigman, D.M., and Haug, G.H., 2011, Southern Ocean dust-climate coupling over the past four million years: Nature, v. 476, p. 312–315, <https://doi.org/10.1038/nature10310>.
- McClymont, E.L., Sosdian, S.M., Rosell-Melé, A., and Rosenthal, Y., 2013, Pleistocene sea-surface temperature evolution: Early cooling, delayed glacial intensification, and implications for the mid-Pleistocene climate transition: Earth-Science Reviews, v. 123, p. 173–193, <https://doi.org/10.1016/j.earscirev.2013.04.006>.
- McDonald, D., Pedersen, T.F., and Crusius, J., 1999, Multiple late Quaternary episodes of exceptional diatom production in the Gulf of Alaska: Deep-sea Research: Part II, Topical Studies in Oceanography, v. 46, p. 2993–3017, [https://doi.org/10.1016/S0967-0645\(99\)00091-0](https://doi.org/10.1016/S0967-0645(99)00091-0).
- Meyers, P.A., 1997, Organic geochemical proxies of paleoceanographic, paleolimnologic, and paleoclimatic processes: Organic Geochemistry, v. 27, p. 213–250, [https://doi.org/10.1016/S0146-6380\(97\)00049-1](https://doi.org/10.1016/S0146-6380(97)00049-1).
- Moore, C.M., Mills, M.M., Milne, A., Langlois, R., Achterberg, E.P., Lochte, K., Geider, R.J., and La Roche, J., 2006, Iron limits primary productivity during spring bloom development in the central North Atlantic: Global Change Biology, v. 12, p. 626–634, <https://doi.org/10.1111/j.1365-2486.2006.01122.x>.
- Muhs, D.R., Budahn, J.R., Skipp, G.L., and McGeehin, J.P., 2016, Geochemical evidence for seasonal controls on the transportation of Holocene loess, Matanuska Valley, southern Alaska, USA: Aeolian Research, v. 21, p. 61–73, <https://doi.org/10.1016/j.aeolia.2016.02.005>.
- Nielsdóttir, M.C., Moore, C.M., Sanders, R., Hinz, D.J., and Achterberg, E.P., 2009, Iron limitation of the postbloom phytoplankton communities in the Iceland Basin: Global Biogeochemical Cycles, v. 23, GB3001, <https://doi.org/10.1029/2008GB003410>.
- Sigman, D.M., Hain, M.P., and Haug, G.H., 2010, The polar ocean and glacial cycles in atmospheric  $\text{CO}_2$  concentration: Nature, v. 466, p. 47–55, <https://doi.org/10.1038/nature09149>.
- Simoneit, B.R.T., 1977, Organic matter in eolian dusts over the Atlantic Ocean: Marine Chemistry, v. 5, p. 443–464, [https://doi.org/10.1016/0304-4203\(77\)90034-2](https://doi.org/10.1016/0304-4203(77)90034-2).
- Smith, K.L., Robison, B.H., Helly, J.J., Kaufmann, R.S., Ruhl, H.A., Shaw, T.J., Twining, B.S., and Vernet, M., 2007, Free-drifting icebergs: Hot spots of chemical and biological enrichment in the Weddell Sea: Science, v. 317, p. 478–482, <https://doi.org/10.1126/science.1142834>.
- Stein, R., Hefter, J., Grützner, J., Voelker, A., and Naafs, B.D.A., 2009, Variability of surface water characteristics and Heinrich-like events in the Pleistocene midlatitude North Atlantic Ocean: Biomarker and XRD records from IODP Site U1313 (MIS 16–9): Paleoceanography, v. 24, PA2203, <https://doi.org/10.1029/2008PA001639>.
- Villanueva, J., Grimalt, J.O., Cortijo, E., Vidal, L., and Labeyrie, L., 1997, A biomarker approach to the organic matter deposited in the North Atlantic during the last climatic cycle: Geochimica et Cosmochimica Acta, v. 61, p. 4633–4646, [https://doi.org/10.1016/S0016-7037\(97\)83123-7](https://doi.org/10.1016/S0016-7037(97)83123-7).

Manuscript received 20 November 2017  
Revised manuscript received 8 January 2018  
Manuscript accepted 9 January 2018

Printed in USA