

Rat	Date	Drug	Dose	Component	TrialDrop	Plat.Loc	Distance	Latency	Speed
K 8	5/16/02	combo	baseline	performance	6 S	0	117.36	3.63	32.33058
K 8	5/23/02	combo	baseline	performance	6 W	0	44.79	1.15	38.94783
K 8	5/30/02	combo	baseline	performance	6 N	0	56.32	1.32	42.66667
K 8	6/7/02	combo	baseline	performance	6 N	0	47.61	0.99	48.09091
K 8	6/13/02	combo	baseline	performance	6 W	0	112.52	2.8	40.18571
K 8	5/28/02	combo	0 x 0	performance	6 W	0	58.24	1.21	48.13223
K 3	5/16/02	combo	baseline	performance	6 S	0	109.34	2.53	43.21739
K 3	5/23/02	combo	baseline	performance	6 W	0	48.95	1.25	39.16
K 3	5/30/02	combo	baseline	performance	6 N	0	67.83	1.59	42.66038
K 3	6/7/02	combo	baseline	performance	6 N	0	46.3	1	46.3
K 6	4/25/02	combo	baseline	performance	6 E	0	140.3	2.64	53.14394
K 6	5/2/02	combo	baseline	performance	6 E	0	101.17	2.45	41.29388
K 6	5/16/02	combo	baseline	performance	6 S	0	104.97	2.86	36.7028
K 6	5/23/02	combo	baseline	performance	6 W	0	33.56	0.77	43.58442
K 6	6/6/02	combo	baseline	performance	6 N	0	41.56	1.05	39.58095
K 6	4/26/02	combo	0 x 0	performance	6 W	0	27.82	0.88	31.61364
K 6	5/28/02	combo	0 x 0	performance	6 W	0	51.49	1.48	34.79054
K 6	5/3/02	combo	0.3 x 3.	performance	6 N	0	61.51	1.48	41.56081
K 6	5/21/02	combo	0.3 x 3.	performance	6 N	0	47.96	1.37	35.0073
K 6	5/17/02	combo	0.3 x 5.	performance	6 W	0	61.19	2.25	27.19556
K 6	5/31/02	combo	0.3 x 5.	performance	6 W	0	78.68	2.03	38.75862
K 6	5/14/02	combo	1.0 x 3.	performance	6 W	0	55.54	1.54	36.06494
K 6	6/4/02	combo	1.0 x 3.	performance	6 E	0	123.96	3.41	36.35191
K 6	4/30/02	combo	1.0 x 5.	performance	6 W	0	219.99	6.92	31.79046
K 6	5/24/02	combo	1.0 x 5.	performance	6 E	0	118.36	3.68	32.16304
K 6	6/8/02	combo	1.0 x 5.	performance	6 S	0	106.1	3.57	29.71989
K 8	5/16/02	combo	baseline	acquisition	6 W	7	129.85	2.86	45.4021
K 8	5/23/02	combo	baseline	acquisition	6 W	1	83.43	1.48	56.37162
K 8	5/30/02	combo	baseline	acquisition	6 S	7	66.37	1.81	36.66851
K 8	6/7/02	combo	baseline	acquisition	6 E	3	150.78	3.41	44.21701
K 8	6/13/02	combo	baseline	acquisition	6 E	1	115.73	2.75	42.08364
K 8	5/28/02	combo	0 x 0	acquisition	6 W	6	195.36	4.23	46.1844
K 3	5/16/02	combo	baseline	acquisition	6 W	7	113.19	2.69	42.07807
K 3	5/23/02	combo	baseline	acquisition	6 W	1	147.75	4.29	34.44056
K 3	5/30/02	combo	baseline	acquisition	6 S	7	60.35	1.65	36.57576
K 3	6/7/02	combo	baseline	acquisition	6 E	3	266.07	6.48	41.06019
K 6	4/25/02	combo	baseline	acquisition	6 W	10	105.16	2.43	43.27572
K 6	5/2/02	combo	baseline	acquisition	6 W	8	184.06	4.45	41.3618
K 6	5/16/02	combo	baseline	acquisition	6 W	7	147.99	4.07	36.36118
K 6	5/23/02	combo	baseline	acquisition	6 W	1	97.88	3.02	32.4106
K 6	6/6/02	combo	baseline	acquisition	6 S	1	137.31	3.96	34.67424
K 6	4/26/02	combo	0 x 0	acquisition	6 E	3	146.08	3.19	45.7931
K 6	5/28/02	combo	0 x 0	acquisition	6 W	6	253.6	5.6	45.28571
K 6	5/3/02	combo	0.3 x 3.	acquisition	6 E	2	161.67	4.29	37.68531
K 6	5/21/02	combo	0.3 x 3.	acquisition	6 N	8	419.69	11.37	36.91205
K 6	5/17/02	combo	0.3 x 5.	acquisition	6 S	11	211.07	6.54	32.2737
K 6	5/31/02	combo	0.3 x 5.	acquisition	6 N	2	522.8	15.38	33.9922
K 6	5/14/02	combo	1.0 x 3.	acquisition	6 E	6	1887.29	59.95	31.48107
K 6	6/4/02	combo	1.0 x 3.	acquisition	6 S	9	2132.63	59.84	35.63887
K 6	4/30/02	combo	1.0 x 5.	acquisition	6 E	4	222.84	7.14	31.21008
K 6	5/24/02	combo	1.0 x 5.	acquisition	6 E	4	109.86	2.58	42.5814
K 6	6/8/02	combo	1.0 x 5.	acquisition	6 S	10	237.6	8.85	26.84746
K 8	5/16/02	combo	baseline	performance	5 W	0	40.92	0.99	41.33333
K 8	5/23/02	combo	baseline	performance	5 S	0	107.51	2.42	44.42562
K 8	5/30/02	combo	baseline	performance	5 W	0	52.32	1.15	45.49565
K 8	6/7/02	combo	baseline	performance	5 W	0	52.37	1.07	48.94393

K 8	6/13/02	combo	baseline performance	5 N	0	50.85	1.43	35.55944
K 8	5/28/02	combo	0 x 0 performance	5 E	0	125.75	2.69	46.74721
K 3	5/16/02	combo	baseline performance	5 W	0	41.82	0.88	47.52273
K 3	5/23/02	combo	baseline performance	5 S	0	110.67	2.91	38.03093
K 3	5/30/02	combo	baseline performance	5 W	0	50.69	1.05	48.27619
K 3	6/7/02	combo	baseline performance	5 W	0	51.13	1.2	42.60833
K 6	4/25/02	combo	baseline performance	5 N	0	36	0.99	36.36364
K 6	5/2/02	combo	baseline performance	5 S	0	106.41	2.15	49.49302
K 6	5/16/02	combo	baseline performance	5 W	0	49.14	1.54	31.90909
K 6	5/23/02	combo	baseline performance	5 S	0	107.66	2.31	46.60606
K 6	6/6/02	combo	baseline performance	5 W	0	55.41	1.2	46.175
K 6	4/26/02	combo	0 x 0 performance	5 S	0	111.9	2.53	44.22925
K 6	5/28/02	combo	0 x 0 performance	5 E	0	109.87	2.86	38.41608
K 6	5/3/02	combo	0.3 x 3. performance	5 N	0	55.6	1.48	37.56757
K 6	5/21/02	combo	0.3 x 3. performance	5 E	0	114.87	3.02	38.03642
K 6	5/17/02	combo	0.3 x 5. performance	5 S	0	120.96	3.74	32.34225
K 6	5/31/02	combo	0.3 x 5. performance	5 N	0	53.79	1.65	32.6
K 6	5/14/02	combo	1.0 x 3. performance	5 S	0	110.38	3.35	32.94925
K 6	6/4/02	combo	1.0 x 3. performance	5 N	0	205.05	7.64	26.83901
K 6	4/30/02	combo	1.0 x 5. performance	5 S	0	167.84	5.16	32.52713
K 6	5/24/02	combo	1.0 x 5. performance	5 S	0	110.21	3.13	35.21086
K 6	6/8/02	combo	1.0 x 5. performance	5 W	0	320.84	11.1	28.9045
K 8	5/16/02	combo	baseline acquisition	5 N	7	121.03	3.19	37.94044
K 8	5/23/02	combo	baseline acquisition	5 N	1	58.69	1.54	38.11039
K 8	5/30/02	combo	baseline acquisition	5 W	7	140.17	3.01	46.56811
K 8	6/7/02	combo	baseline acquisition	5 S	3	130.22	3.57	36.47619
K 8	6/13/02	combo	baseline acquisition	5 S	1	217.77	5.49	39.66667
K 8	5/28/02	combo	0 x 0 acquisition	5 N	6	132.37	3.19	41.4953
K 3	5/16/02	combo	baseline acquisition	5 N	7	242.34	6.98	34.7192
K 3	5/23/02	combo	baseline acquisition	5 N	1	64.7	1.65	39.21212
K 3	5/30/02	combo	baseline acquisition	5 W	7	165.16	4	41.29
K 3	6/7/02	combo	baseline acquisition	5 S	3	182.35	4.89	37.29039
K 6	4/25/02	combo	baseline acquisition	5 S	10	111.82	2.91	38.42612
K 6	5/2/02	combo	baseline acquisition	5 E	8	360.6	8.24	43.76214
K 6	5/16/02	combo	baseline acquisition	5 N	7	129.27	3.96	32.64394
K 6	5/23/02	combo	baseline acquisition	5 N	1	226.81	6.43	35.27372
K 6	6/6/02	combo	baseline acquisition	5 E	1	91.04	3	30.34667
K 6	4/26/02	combo	0 x 0 acquisition	5 N	3	170.74	5.44	31.38603
K 6	5/28/02	combo	0 x 0 acquisition	5 N	6	127.91	3.9	32.79744
K 6	5/3/02	combo	0.3 x 3. acquisition	5 S	2	517.39	13.63	37.95965
K 6	5/21/02	combo	0.3 x 3. acquisition	5 S	8	246.49	6.54	37.6896
K 6	5/17/02	combo	0.3 x 5. acquisition	5 W	11	627.49	18.41	34.08419
K 6	5/31/02	combo	0.3 x 5. acquisition	5 S	2	476.65	13.79	34.5649
K 6	5/14/02	combo	1.0 x 3. acquisition	5 N	6	741.63	24.23	30.60792
K 6	6/4/02	combo	1.0 x 3. acquisition	5 W	9	452.94	12.25	36.97469
K 6	4/30/02	combo	1.0 x 5. acquisition	5 N	4	656.02	19.78	33.16582
K 6	5/24/02	combo	1.0 x 5. acquisition	5 N	4	128.79	4.07	31.64373
K 6	6/8/02	combo	1.0 x 5. acquisition	5 W	10	279.82	9.89	28.29323
K 8	5/16/02	combo	baseline performance	4 N	0	48.93	1.43	34.21678
K 8	5/23/02	combo	baseline performance	4 W	0	49.62	1.1	45.10909
K 8	5/30/02	combo	baseline performance	4 N	0	40.32	0.6	67.2
K 8	6/7/02	combo	baseline performance	4 S	0	108.29	1.87	57.90909
K 8	6/13/02	combo	baseline performance	4 E	0	132.07	2.8	47.16786
K 8	5/28/02	combo	0 x 0 performance	4 S	0	110.74	2.64	41.94697
K 3	5/16/02	combo	baseline performance	4 N	0	100.69	2.53	39.79842
K 3	5/23/02	combo	baseline performance	4 W	0	50.66	1.1	46.05455
K 3	5/30/02	combo	baseline performance	4 N	0	42.31	0.99	42.73737

K 3	6/7/02	combo	baseline performance	4 S	0	108.1	2.25	48.04444
K 6	4/25/02	combo	baseline performance	4 W	0	54.63	1.59	34.35849
K 6	5/2/02	combo	baseline performance	4 W	0	65.04	2.14	30.39252
K 6	5/16/02	combo	baseline performance	4 N	0	50.5	1.76	28.69318
K 6	5/23/02	combo	baseline performance	4 W	0	54.96	1.54	35.68831
K 6	6/6/02	combo	baseline performance	4 E	0	114.86	2.86	40.16084
K 6	4/26/02	combo	0 x 0 performance	4 E	0	114.41	2.31	49.52814
K 6	5/28/02	combo	0 x 0 performance	4 S	0	99.6	2.31	43.11688
K 6	5/3/02	combo	0.3 x 3. performance	4 E	0	133.53	2.86	46.68881
K 6	5/21/02	combo	0.3 x 3. performance	4 S	0	103.69	2.47	41.97976
K 6	5/17/02	combo	0.3 x 5. performance	4 E	0	142.56	3.74	38.11765
K 6	5/31/02	combo	0.3 x 5. performance	4 E	0	106.49	2.47	43.11336
K 6	5/14/02	combo	1.0 x 3. performance	4 N	0	44.42	1.48	30.01351
K 6	6/4/02	combo	1.0 x 3. performance	4 W	0	64.27	2.47	26.02024
K 6	4/30/02	combo	1.0 x 5. performance	4 E	0	275.22	8.46	32.53191
K 6	5/24/02	combo	1.0 x 5. performance	4 E	0	99.93	3.19	31.32602
K 6	6/8/02	combo	1.0 x 5. performance	4 N	0	48.49	1.92	25.25521
K 8	5/16/02	combo	baseline acquisition	4 E	7	188.67	5.33	35.39775
K 8	5/23/02	combo	baseline acquisition	4 S	1	84.52	2.31	36.58874
K 8	5/30/02	combo	baseline acquisition	4 S	7	66.78	2.03	32.89655
K 8	6/7/02	combo	baseline acquisition	4 W	3	45.16	1.08	41.81481
K 8	6/13/02	combo	baseline acquisition	4 W	1	104.68	1.98	52.86869
K 8	5/28/02	combo	0 x 0 acquisition	4 E	6	185.82	5.38	34.53903
K 3	5/16/02	combo	baseline acquisition	4 E	7	319.13	8.08	39.49629
K 3	5/23/02	combo	baseline acquisition	4 S	1	528.49	14.29	36.98321
K 3	5/30/02	combo	baseline acquisition	4 S	7	59.17	1.43	41.37762
K 3	6/7/02	combo	baseline acquisition	4 W	3	26.17	0.99	26.43434
K 6	4/25/02	combo	baseline acquisition	4 E	10	186.56	4.62	40.38095
K 6	5/2/02	combo	baseline acquisition	4 S	8	190.18	4.84	39.29339
K 6	5/16/02	combo	baseline acquisition	4 E	7	43.1	1.41	30.56738
K 6	5/23/02	combo	baseline acquisition	4 S	1	95.66	2.47	38.72874
K 6	6/6/02	combo	baseline acquisition	4 N	1	77.19	2.89	26.70934
K 6	4/26/02	combo	0 x 0 acquisition	4 W	3	277.89	6.26	44.39137
K 6	5/28/02	combo	0 x 0 acquisition	4 E	6	84.27	2.25	37.45333
K 6	5/3/02	combo	0.3 x 3. acquisition	4 W	2	364.56	8.96	40.6875
K 6	5/21/02	combo	0.3 x 3. acquisition	4 W	8	183.94	4.07	45.1941
K 6	5/17/02	combo	0.3 x 5. acquisition	4 N	11	793.15	25.49	31.11612
K 6	5/31/02	combo	0.3 x 5. acquisition	4 E	2	188.3	5.77	32.63432
K 6	5/14/02	combo	1.0 x 3. acquisition	4 W	6	1123.29	37.69	29.8034
K 6	6/4/02	combo	1.0 x 3. acquisition	4 E	9	24.51	0.99	24.75758
K 6	4/30/02	combo	1.0 x 5. acquisition	4 W	4	208.98	6.37	32.80691
K 6	5/24/02	combo	1.0 x 5. acquisition	4 W	4	285.91	8.9	32.12472
K 6	6/8/02	combo	1.0 x 5. acquisition	4 N	10	427.83	15	28.522
K 8	5/16/02	combo	baseline performance	3 E	0	122	3.19	38.24451
K 8	5/23/02	combo	baseline performance	3 E	0	103.92	2.03	51.19212
K 8	5/30/02	combo	baseline performance	3 E	0	119.67	2.47	48.44939
K 8	6/7/02	combo	baseline performance	3 E	0	115.43	2.53	45.62451
K 8	6/13/02	combo	baseline performance	3 S	0	109.54	2.58	42.45736
K 8	5/28/02	combo	0 x 0 performance	3 W	0	51.78	1.1	47.07273
K 3	5/16/02	combo	baseline performance	3 E	0	112.82	2.69	41.94052
K 3	5/23/02	combo	baseline performance	3 E	0	111.21	2.47	45.02429
K 3	5/30/02	combo	baseline performance	3 E	0	109.36	2.64	41.42424
K 3	6/7/02	combo	baseline performance	3 E	0	112.11	2.25	49.82667
K 6	4/25/02	combo	baseline performance	3 S	0	113.36	3.35	33.83881
K 6	5/2/02	combo	baseline performance	3 E	0	154.48	3.24	47.67901
K 6	5/16/02	combo	baseline performance	3 E	0	114.72	2.2	52.14545
K 6	5/23/02	combo	baseline performance	3 E	0	123.39	2.86	43.14336

K 6	6/6/02	combo	baseline	performance	3 N	0	37.71	0.77	48.97403
K 6	4/26/02	combo	0 x 0	performance	3 N	0	83.44	2.64	31.60606
K 6	5/28/02	combo	0 x 0	performance	3 W	0	30.36	0.66	46
K 6	5/3/02	combo	0.3 x 3.	performance	3 S	0	209.16	6.65	31.45263
K 6	5/21/02	combo	0.3 x 3.	performance	3 W	0	50.94	1.37	37.18248
K 6	5/17/02	combo	0.3 x 5.	performance	3 S	0	110.24	3.63	30.36915
K 6	5/31/02	combo	0.3 x 5.	performance	3 S	0	123.45	3.57	34.57983
K 6	5/14/02	combo	1.0 x 3.	performance	3 W	0	243.1	9.23	26.33803
K 6	6/4/02	combo	1.0 x 3.	performance	3 S	0	979.39	29.4	33.31259
K 6	4/30/02	combo	1.0 x 5.	performance	3 N	0	47.68	1.54	30.96104
K 6	5/24/02	combo	1.0 x 5.	performance	3 S	0	113.09	3.3	34.2697
K 6	6/8/02	combo	1.0 x 5.	performance	3 S	0	108.61	3.74	29.04011
K 8	5/16/02	combo	baseline	acquisition	3 W	7	154.31	3.19	48.37304
K 8	5/23/02	combo	baseline	acquisition	3 W	1	236.73	5.6	42.27321
K 8	5/30/02	combo	baseline	acquisition	3 E	7	159.43	4.67	34.13919
K 8	6/7/02	combo	baseline	acquisition	3 N	3	79.88	1.98	40.34343
K 8	6/13/02	combo	baseline	acquisition	3 N	1	234.31	7.05	33.23546
K 8	5/28/02	combo	0 x 0	acquisition	3 S	6	26.63	0.77	34.58442
K 3	5/16/02	combo	baseline	acquisition	3 W	7	107.92	2.25	47.96444
K 3	5/23/02	combo	baseline	acquisition	3 W	1	140.74	3.96	35.5404
K 3	5/30/02	combo	baseline	acquisition	3 E	7	189.83	4.95	38.34949
K 3	6/7/02	combo	baseline	acquisition	3 N	3	256.64	6.48	39.60494
K 6	4/25/02	combo	baseline	acquisition	3 N	10	188	5.33	35.27205
K 6	5/2/02	combo	baseline	acquisition	3 N	8	130.64	3.63	35.98898
K 6	5/16/02	combo	baseline	acquisition	3 W	7	237.82	5.6	42.46786
K 6	5/23/02	combo	baseline	acquisition	3 W	1	172.23	5.11	33.7045
K 6	6/6/02	combo	baseline	acquisition	3 S	1	96.04	2.97	32.3367
K 6	4/26/02	combo	0 x 0	acquisition	3 S	3	74.56	1.87	39.87166
K 6	5/28/02	combo	0 x 0	acquisition	3 S	6	255.49	8.08	31.62005
K 6	5/3/02	combo	0.3 x 3.	acquisition	3 E	2	174.51	4.78	36.50837
K 6	5/21/02	combo	0.3 x 3.	acquisition	3 E	8	440.48	11.81	37.29721
K 6	5/17/02	combo	0.3 x 5.	acquisition	3 S	11	183.14	6.76	27.09172
K 6	5/31/02	combo	0.3 x 5.	acquisition	3 W	2	375.24	10.88	34.48897
K 6	5/14/02	combo	1.0 x 3.	acquisition	3 E	6	1792.63	57.91	30.95545
K 6	6/4/02	combo	1.0 x 3.	acquisition	3 S	9	1078.12	34.4	31.3407
K 6	4/30/02	combo	1.0 x 5.	acquisition	3 S	4	200.51	6.92	28.97543
K 6	5/24/02	combo	1.0 x 5.	acquisition	3 E	4	444.96	15.33	29.02544
K 6	6/8/02	combo	1.0 x 5.	acquisition	3 E	10	907	30.49	29.74746
K 8	5/16/02	combo	baseline	performance	2 W	0	46.01	1.15	40.0087
K 8	5/23/02	combo	baseline	performance	2 S	0	114.31	2.64	43.29924
K 8	5/30/02	combo	baseline	performance	2 W	0	50.15	1.1	45.59091
K 8	6/7/02	combo	baseline	performance	2 N	0	37.64	1.04	36.19231
K 8	6/13/02	combo	baseline	performance	2 W	0	63.01	1.26	50.00794
K 8	5/28/02	combo	0 x 0	performance	2 E	0	99.82	2.03	49.17241
K 3	5/16/02	combo	baseline	performance	2 W	0	42.88	0.99	43.31313
K 3	5/23/02	combo	baseline	performance	2 S	0	100.36	2.64	38.01515
K 3	5/30/02	combo	baseline	performance	2 W	0	53.44	1.04	51.38462
K 3	6/7/02	combo	baseline	performance	2 N	0	49.1	1.43	34.33566
K 6	4/25/02	combo	baseline	performance	2 E	0	161.98	3.02	53.63576
K 6	5/2/02	combo	baseline	performance	2 S	0	105.2	2.22	47.38739
K 6	5/16/02	combo	baseline	performance	2 W	0	65.32	1.98	32.9899
K 6	5/23/02	combo	baseline	performance	2 S	0	119.31	2.86	41.71678
K 6	6/6/02	combo	baseline	performance	2 S	0	110.35	2.86	38.58392
K 6	4/26/02	combo	0 x 0	performance	2 W	0	54.74	1.26	43.44444
K 6	5/28/02	combo	0 x 0	performance	2 E	0	101.51	2.58	39.34496
K 6	5/3/02	combo	0.3 x 3.	performance	2 W	0	70.93	1.65	42.98788
K 6	5/21/02	combo	0.3 x 3.	performance	2 N	0	45.86	1.48	30.98649

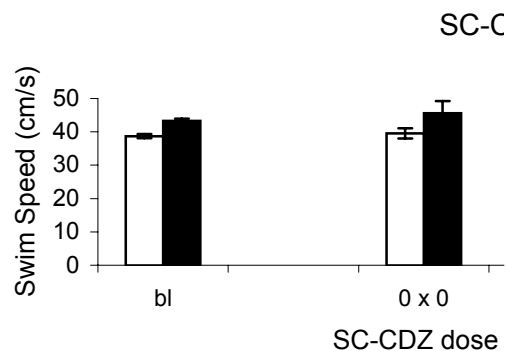
K 6	5/17/02	combo	0.3 x 5.	performance	2 N	0	81.41	2.03	40.10345
K 6	5/31/02	combo	0.3 x 5.	performance	2 W	0	57.42	1098	0.052295
K 6	5/14/02	combo	1.0 x 3.	performance	2 E	0	118.24	3.57	33.12045
K 6	6/4/02	combo	1.0 x 3.	performance	2 E	0	152.73	5.11	29.88845
K 6	4/30/02	combo	1.0 x 5.	performance	2 W	0	833.66	27.14	30.71702
K 6	5/24/02	combo	1.0 x 5.	performance	2 N	0	50.07	1.7	29.45294
K 6	6/8/02	combo	1.0 x 5.	performance	2 W	0	689.51	25.44	27.10338
K 8	5/16/02	combo	baseline	acquisition	2 S	7	201.01	5.93	33.89713
K 8	5/23/02	combo	baseline	acquisition	2 E	1	87.24	2.36	36.96661
K 8	5/30/02	combo	baseline	acquisition	2 W	7	122.69	2.91	42.16151
K 8	6/7/02	combo	baseline	acquisition	2 E	3	156.5	3.68	42.52717
K 8	6/13/02	combo	baseline	acquisition	2 E	1	277	6.98	39.68481
K 8	5/28/02	combo	0 x 0	acquisition	2 N	6	192.94	4.07	47.40541
K 3	5/16/02	combo	baseline	acquisition	2 S	7	197.97	4.45	44.48764
K 3	5/23/02	combo	baseline	acquisition	2 E	1	316.61	8.24	38.42354
K 3	5/30/02	combo	baseline	acquisition	2 W	7	309.74	8.35	37.09461
K 3	6/7/02	combo	baseline	acquisition	2 E	3	267.73	6.15	43.53333
K 6	4/25/02	combo	baseline	acquisition	2 W	10	132.73	3.13	42.40575
K 6	5/2/02	combo	baseline	acquisition	2 E	8	276.72	7.53	36.749
K 6	5/16/02	combo	baseline	acquisition	2 S	7	197.77	5.11	38.70254
K 6	5/23/02	combo	baseline	acquisition	2 E	1	680.6	16.98	40.08245
K 6	6/6/02	combo	baseline	acquisition	2 E	1	263.14	7.86	33.47837
K 6	4/26/02	combo	0 x 0	acquisition	2 E	3	147.36	3.21	45.90654
K 6	5/28/02	combo	0 x 0	acquisition	2 N	6	147.32	4.34	33.9447
K 6	5/3/02	combo	0.3 x 3.	acquisition	2 S	2	126.9	3.63	34.95868
K 6	5/21/02	combo	0.3 x 3.	acquisition	2 S	8	328.44	9.62	34.14137
K 6	5/17/02	combo	0.3 x 5.	acquisition	2 W	11	1197.11	37.97	31.52779
K 6	5/31/02	combo	0.3 x 5.	acquisition	2 S	2	118.8	3.68	32.28261
K 6	5/14/02	combo	1.0 x 3.	acquisition	2 S	6	24.08	0.93	25.89247
K 6	6/4/02	combo	1.0 x 3.	acquisition	2 N	9	1869.08	59.95	31.17731
K 6	4/30/02	combo	1.0 x 5.	acquisition	2 E	4	218.77	6.7	32.65224
K 6	5/24/02	combo	1.0 x 5.	acquisition	2 S	4	39.36	1.26	31.2381
K 6	6/8/02	combo	1.0 x 5.	acquisition	2 S	10	765.65	27.8	27.54137
K 8	5/16/02	combo	baseline	performance	1 S	0	123.65	2.75	44.96364
K 8	5/23/02	combo	baseline	performance	1 N	0	43.9	0.93	47.2043
K 8	5/30/02	combo	baseline	performance	1 S	0	108.64	2.36	46.0339
K 8	6/7/02	combo	baseline	performance	1 W	0	55.57	1.1	50.51818
K 8	6/13/02	combo	baseline	performance	1 N	0	43.62	1.15	37.93043
K 8	5/28/02	combo	0 x 0	performance	1 N	0	40.18	0.93	43.2043
K 3	5/16/02	combo	baseline	performance	1 S	0	109.52	2.25	48.67556
K 3	5/23/02	combo	baseline	performance	1 N	0	42.56	1.04	40.92308
K 3	5/30/02	combo	baseline	performance	1 S	0	104.97	2.31	45.44156
K 3	6/7/02	combo	baseline	performance	1 W	0	50.95	1.21	42.10744
K 6	4/25/02	combo	baseline	performance	1 N	0	48.52	1.04	46.65385
K 6	5/2/02	combo	baseline	performance	1 N	0	47.42	1.26	37.63492
K 6	5/16/02	combo	baseline	performance	1 S	0	145.28	3.24	44.83951
K 6	5/23/02	combo	baseline	performance	1 N	0	77.64	1.54	50.41558
K 6	6/6/02	combo	baseline	performance	1 W	0	54.53	1.43	38.13287
K 6	4/26/02	combo	0 x 0	performance	1 S	0	158.72	1.54	103.0649
K 6	5/28/02	combo	0 x 0	performance	1 N	0	51.53	1.32	39.03788
K 6	5/3/02	combo	0.3 x 3.	performance	1 E	0	128.41	2.86	44.8986
K 6	5/21/02	combo	0.3 x 3.	performance	1 E	0	166.34	3.46	48.07514
K 6	5/17/02	combo	0.3 x 5.	performance	1 W	0	51.18	1.54	33.23377
K 6	5/31/02	combo	0.3 x 5.	performance	1 N	0	49.85	1.7	29.32353
K 6	5/14/02	combo	1.0 x 3.	performance	1 S	0	132.89	4.12	32.25485
K 6	6/4/02	combo	1.0 x 3.	performance	1 N	0	157.68	5.82	27.09278
K 6	4/30/02	combo	1.0 x 5.	performance	1 S	0	125.03	5.6	22.32679

K 6	5/24/02	combo	1.0 x 5.	performance	1 W	0	54.39	1.87	29.08556
K 6	6/8/02	combo	1.0 x 5.	performance	1 E	0	148.56	5.44	27.30882
K 8	5/16/02	combo	baseline	acquisition	1 N	7	278.64	8.13	34.27306
K 8	5/23/02	combo	baseline	acquisition	1 N	1	1575.08	43.96	35.82985
K 8	5/30/02	combo	baseline	acquisition	1 N	7	259.25	7.03	36.87767
K 8	6/7/02	combo	baseline	acquisition	1 S	3	257.68	6.76	38.11834
K 8	6/13/02	combo	baseline	acquisition	1 S	1	236.41	6.43	36.76672
K 8	5/28/02	combo	0 x 0	acquisition	1 W	6	869.36	22.86	38.02975
K 3	5/16/02	combo	baseline	acquisition	1 N	7	685.8	16.04	42.75561
K 3	5/23/02	combo	baseline	acquisition	1 N	1	57.71	1.76	32.78977
K 3	5/30/02	combo	baseline	acquisition	1 N	7	582.62	12.97	44.92059
K 3	6/7/02	combo	baseline	acquisition	1 S	3	150.46	3.9	38.57949
K 6	4/25/02	combo	baseline	acquisition	1 S	10	397.26	10.11	39.29377
K 6	5/2/02	combo	baseline	acquisition	1 W	8	1416.88	33.02	42.90975
K 6	5/16/02	combo	baseline	acquisition	1 N	7	210.13	5.01	41.94212
K 6	5/23/02	combo	baseline	acquisition	1 N	1	2361.6	59.84	39.46524
K 6	6/6/02	combo	baseline	acquisition	1 W	1	2283.75	59.95	38.09425
K 6	4/26/02	combo	0 x 0	acquisition	1 N	3	247.59	5.38	46.02045
K 6	5/28/02	combo	0 x 0	acquisition	1 W	6	266.99	6.76	39.49556
K 6	5/3/02	combo	0.3 x 3.	acquisition	1 N	2	1487.19	42.53	34.96802
K 6	5/21/02	combo	0.3 x 3.	acquisition	1 N	8	391.34	11.04	35.44746
K 6	5/17/02	combo	0.3 x 5.	acquisition	1 E	11	692.09	21.54	32.13045
K 6	5/31/02	combo	0.3 x 5.	acquisition	1 N	2	555.74	17.31	32.10514
K 6	5/14/02	combo	1.0 x 3.	acquisition	1 N	6	403.29	14.12	28.56161
K 6	6/4/02	combo	1.0 x 3.	acquisition	1 W	9	1817.45	59.95	30.3161
K 6	4/30/02	combo	1.0 x 5.	acquisition	1 N	4	209.18	6.48	32.28086
K 6	5/24/02	combo	1.0 x 5.	acquisition	1 N	4	251.46	9.18	27.39216
K 6	6/8/02	combo	1.0 x 5.	acquisition	1 W	10	158.94	6.26	25.38978

Average of Speed		Component		Speed	
Dose	acquisition	performance		bl	38.68617925
0 x 0	39.51056596	45.5816		0 x 0	39.51056596
0.3 x 3.0	37.90338412	39.702		0.3 x 3.0	37.90338412
0.3 x 5.6	32.40565132	31.6491		0.3 x 5.6	32.40565132
1.0 x 3.0	30.8629461	30.8538		1.0 x 3.0	30.8629461
1.0 x 5.6	31.09169204	29.983		1.0 x 5.6	31.09169204
baseline	38.68617925	43.2862			

StdDev of Speed		Component	
Dose	acquisition	performance	
0 x 0	6.012012312	15.3667	
0.3 x 3.0	3.11131635	5.60114	
0.3 x 5.6	2.238389609	11.0083	
1.0 x 3.0	3.712582942	3.69987	
1.0 x 5.6	3.767415746	3.1587	
baseline	5.272833591	6.42037	

Count of Speed		Component	
Dose	acquisition	performance	
0 x 0	15	18	
0.3 x 3.0	10	12	
0.3 x 5.6	10	12	
1.0 x 3.0	10	12	
1.0 x 5.6	15	18	
baseline	70	84	



SE
bl 0.630224156 0.70052

0 x 0	1.552294904	3.62198
0.3 x 3.0	0.983884619	1.61691
0.3 x 5.6	0.707840946	3.17783
1.0 x 3.0	1.17402181	1.06806
1.0 x 5.6	0.972742563	0.74451

Average of Speed			Component	
Rat	Dose	Date	acquisition	performance
K 3	baseline	5/16/02	41.74912733	44.07795748
		5/23/02	36.91996668	41.2013322
		5/30/02	38.93749714	45.3207263
		6/7/02	37.58463775	43.87042447
K 6	0 x 0	4/26/02	41.46974129	50.58107734
		5/28/02	36.2202467	40.1177246
	0.3 x 3.	5/3/02	37.55990168	40.85938356
		5/21/02	38.24686656	38.54459882
	0.3 x 5.	5/17/02	31.21870374	33.56030152
		5/31/02	33.59259889	29.73793957
	1.0 x 3.	5/14/02	29.74806179	31.79017217
		6/4/02	31.97783041	29.91749614
1.0 x 5.	4/30/02	31.76209756	30.14239277	
	5/24/02	33.32267693	31.91802076	
		6/8/02	28.19030164	27.88865196

K 6	baseline	4/25/02	39.95211704	42.99908001
		5/2/02	39.43106136	42.31345742
		5/16/02	36.14857916	37.87998827
		5/23/02	36.04000177	43.52575203
		6/6/02	31.5090647	41.93460012
K 8	0 x 0	5/28/02	40.84170988	46.04597586
	baseline	5/16/02	40.20209187	38.51625686
		5/23/02	42.06201436	45.02969976
		5/30/02	38.48677293	49.23941982
		6/7/02	41.07572447	47.87982011
		6/13/02	41.50785293	42.2181246

43.28619

45.58159
39.70199
31.64912
30.85383
29.98302

SC-CDZ Average Swim Speed

