

APPENDIX J

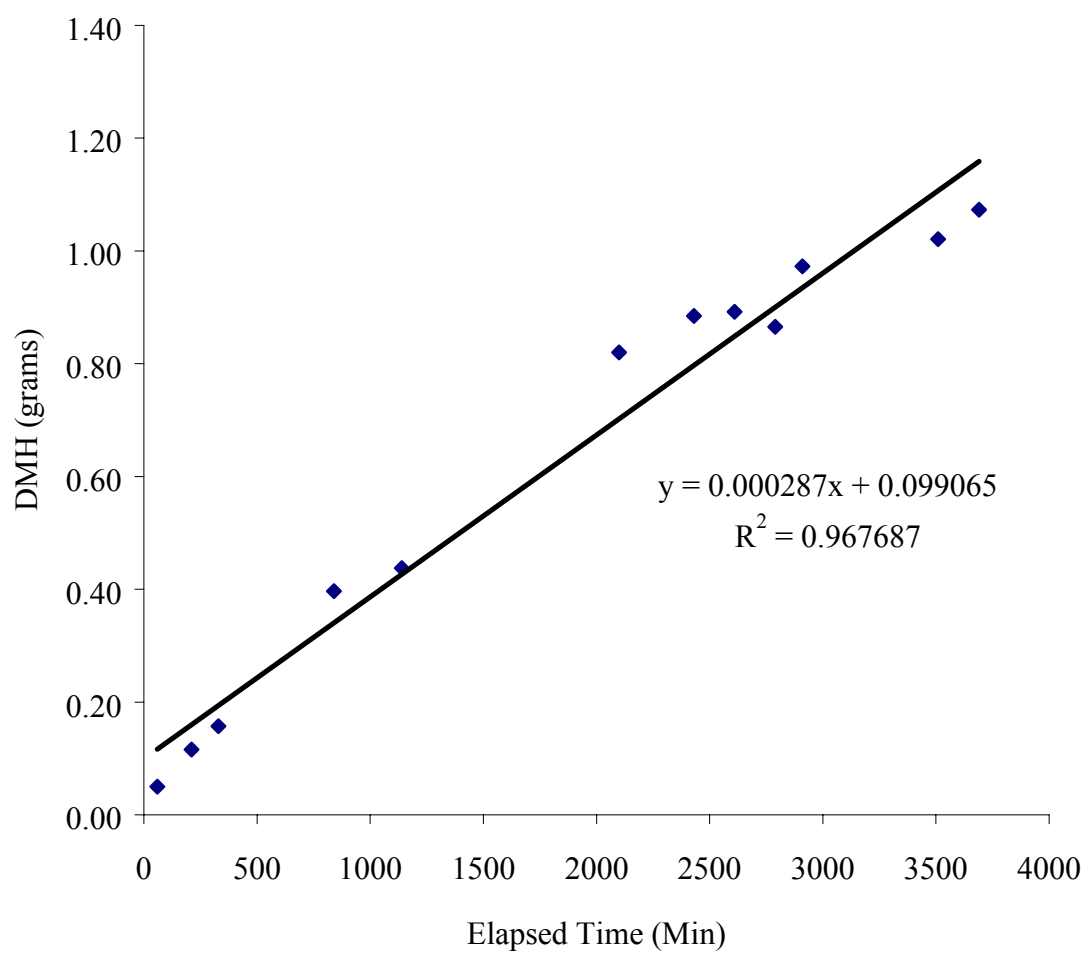
Continuous System 10: Deionized Water (Control)

HPLC Data Compilation.....	173
Appearance of DHM Graph.....	174
Chemiluminescence Data Compilation.....	175
Disappearance of BCDMH Graph.....	183

Continuous System 10: HPLC Data

Time	Elapsed Time	Peak Area	Conc. (M)	Avg. Conc. (M)	S	Summary			
						Elapsed Time	Conc. (M)	Conc. (M)	gram amount
3/20/03 11:30 PM	60	227.10242	1.55E-04	1.54E-04	4.3E-07	60	1.54E-04	0.154	0.0499
		226.13956	1.54E-04			210	1.02E-04	0.102	0.1156
3/21/03 2:00 AM	210	144.00197	1.02E-04	1.02E-04	9.2E-07	330	8.87E-05	0.089	0.1574
		141.94336	1.01E-04			840	8.78E-05	0.088	0.3969
3/21/03 4:00 AM	330	122.23	8.86E-05	8.87E-05	6.3E-08	1140	7.13E-05	0.071	0.4373
		122.37096	8.87E-05			2100	7.26E-05	0.073	0.8202
3/21/03 12:30 PM	840	121.83408	8.84E-05	8.78E-05	7.7E-07	2430	6.76E-05	0.068	0.8846
		120.11107	8.73E-05			2610	6.35E-05	0.064	0.8919
3/21/03 5:30 PM	1140	95.65233	7.18E-05	7.13E-05	7.8E-07	2790	5.77E-05	0.058	0.8656
		93.91304	7.07E-05			2910	6.21E-05	0.062	0.9728
3/22/03 9:30 AM	2100	98.15371	7.34E-05	7.26E-05	1.2E-06	3510	5.40E-05	0.054	1.0208
		95.50543	7.17E-05			3690	5.40E-05	0.054	1.0730
3/22/03 3:00 PM	2430	90.86311	6.88E-05	6.76E-05	1.7E-06				
		87.16476	6.65E-05						
3/22/03 9:00 PM	2610	84.01464	6.45E-05	6.35E-05	1.4E-06				
		80.89017	6.25E-05						
3/23/03 12:00 AM	2790	73.77319	5.80E-05	5.77E-05	5.3E-07				
		72.59399	5.73E-05						
3/23/03 2:00 AM	2910	81.2226	6.27E-05	6.21E-05	8.6E-07				
		79.30141	6.15E-05						
3/23/03 12:00 PM	3510	69.22946	5.52E-05	5.40E-05	1.6E-06				
		65.69315	5.29E-05						
3/23/03 3:00 PM	3690	69.3735	5.53E-05	5.40E-05	1.7E-06				
		65.51592	5.28E-05						

Continuous System 10 Kinetics: Appearance of DMH



Continuous System 3: Chemiluminescence Data		
Elapsed Time (Min)	Conc. (mM)	grams BCDMH
60	0.0692	4.80
210	0.0490	4.74
330	0.0292	4.74
840	0.0461	4.45
1140	0.0260	4.54
2100	0.0345	4.11
2430	0.0289	4.13
2790	0.0256	4.11
2910	0.0261	4.07
3510	0.0239	3.99
3690	0.0250	3.90

Turner Designs: TD-20/20 Luminometer Ver. 2020-1E 1098	
Delay Time: (sec)	2
Integrate Time: (sec)	4
Number of Replicates:	1
Sensitivity Level %:	1
Standard Reading:	1.76
Injection Volume #1: (ul)	50
Injection Volume #2: (ul)	50
Average Blank:	0.272
Mode:	STD

The following tables contain the continuous stream data. Each column represents a series of luminescence readings, taken every 0.2 seconds. Five series of measurements (5 columns) were taken from each sample. The first number in the columns represents the blank sample that was obtained prior to the addition of the BCDMH briquette. The instrument was programmed to collect measurements for four seconds with a two second delay. The peak maximums, usually seen around 0.6 seconds were averaged. Average peak maximums and BCDMH concentrations are seen below each sample

Continuous System 10 (pg 1 of 7)									
0.272	0.272	0.272	0.272	0.272	0.272	0.272	0.272	0.272	0.272
5.375	0.874	0.246	0.205	1.037	2.328	1.497	0.136	0.613	0.163
4.802	0.915	0.287	0.246	0.928	2.355	1.525	0.177	0.653	0.218
4.53	428.9	0.996	158.8	32.19	144.9	145.4	90.67	99	41.86
4404	3432	3189	3139	3128	3317	2410	2211	2097	2203
542.9	548.2	520.9	637.7	522	353	345.4	341.7	333.3	352.6
474.4	478	454.8	475.8	457.8	314.3	297.5	294.8	289.6	305.9
414.5	420.5	392.5	406.6	401.4	282	260.5	258.1	254.3	267.3
361.1	369.1	341.8	353.8	351	253.5	228.8	226.3	222.8	233.7
315.4	323.8	297.4	310.5	305.5	227.1	200.8	198.6	195.6	204.8
275.6	284	258.9	272.6	267.1	203.4	176.3	174.4	171.6	179.5
240.7	249.1	225.7	239.3	233.6	182.5	154.8	153.2	150.7	157.2
210.4	218.6	196.5	210.4	204.4	163.2	136	134.7	132.2	137.4
184	191.9	171.2	185.1	179.1	146.1	125.6	124.3	122.3	126.6
160.8	168.5	149.4	162.7	156.7	130.6	111.3	110.2	108.5	112
140.7	148	130.3	143.4	137.1	122.8	98.48	97.57	95.97	98.95
123	130	119.6	125.9	126.1	110.6	87.1	86.44	84.99	87.47
114.1	120.3	105.3	117.1	111.4	99.37	77.11	76.61	75.3	77.37
100.6	106.7	92.54	104	98.28	89.24	68.29	67.99	66.79	68.41
88.71	94.48	81.4	92.29	86.72	80.15	60.51	60.34	59.24	60.56
78.28	83.68	71.67	81.96	76.62	71.97	53.63	53.58	52.58	53.66
69.19	74.17	63.15	72.83	67.68	64.67	47.55	47.62	46.72	47.6
61.13	65.81	55.68	64.81	59.87	58.11	42.18	42.33	41.52	42.25
54.1	58.39	49.15	57.69	52.98	52.22	37.45	37.68	36.93	37.54
47.9	51.89	43.42	51.39	46.92	46.92	33.27	33.54	32.85	33.35
42.43	46.12	38.4	45.88	41.62	42.21	29.59	29.88	29.25	29.67
37.65	41.05	33.95	40.92	36.9	37.98	26.31	26.65	26.07	26.41
33.41	36.55	30.11	36.59	32.76	34.18	23.45	23.74	23.26	23.52
29.7	32.59	26.68	32.71	29.12	30.76	20.89	21.19	20.74	20.95
26.41	29.06	23.68	29.3	25.89	27.73	18.66	18.93	18.54	18.72
23.52	25.95	21.05	26.25	23.07	25.02	16.65	16.97	16.59	16.7
Samp1 r0	Samp2 r0	Samp3 r0	Samp4 r0	Samp5 r0	Samp6 r0	Samp7 r0	Samp8 r0	Samp9 r0	Samp10 r0
					3/21/03 2:00				
Average peak max			3458.4		Average peak max			2447.6	
BCDMH Conc. (mM)			0.06923		BCDMH Conc. (mM)			0.04901	

Continuous System 10 (pg 2 of 7)

0.272	0.272	0.272	0.272	0.272	0.272	0.272	0.272	0.272	0.272	0.272
0.534	2.501	0.739	0.261	1.039	1.392	0.928	1.337	1.133	0.11	
0.588	2.542	0.78	0.315	1.067	1.337	0.996	1.351	1.174	0.164	
1.395	5.234	210.1	223.3	328.2	285.7	92.46	425.8	171.1	3.397	
1822	1639	1195	1611	1019	2267	1531	3069	2480	2165	
274.7	250.8	235.8	234.4	228.3	306.8	287.8	310.3	290.4	286.8	
236.1	216.7	203.1	201.7	197.9	262.9	245.8	263.7	245.7	237.8	
204.7	188.1	176.3	175.2	172.2	228.9	213.1	231.1	215.2	208.2	
178.3	163	153.2	152.3	150.2	199.8	184.8	202.2	188.9	182.6	
155.1	141.4	132.7	132.2	130.5	174.5	160.3	176.9	165.4	160	
135.2	122.9	121.2	120.9	119.6	152.4	139.3	154.8	145	140.1	
123.9	112.9	106.1	106.1	105	133	127.2	135.5	127	122.7	
109	98.76	92.68	92.93	92.07	122.3	111.5	124.5	117.2	113.8	
95.78	86.51	81.04	81.44	80.7	107.9	97.74	109.9	103.7	100.3	
84.24	75.8	70.92	71.41	70.8	95.04	85.71	96.85	91.46	88.57	
74.16	66.48	62.11	62.68	62.16	83.74	75.23	85.42	80.76	78.19	
65.35	58.3	54.4	55.03	54.59	73.88	66.05	75.34	71.41	69.08	
57.61	51.19	47.68	48.38	47.93	65.22	58.07	66.54	63.12	61.08	
50.85	44.98	41.83	42.53	42.18	57.6	51.08	58.76	55.82	54.02	
44.92	39.57	36.7	37.42	37.09	50.91	44.94	51.94	49.43	47.8	
39.69	34.8	32.23	32.97	32.61	45.04	39.54	45.96	43.74	42.35	
35.1	30.64	28.34	29.01	28.72	39.85	34.86	40.67	38.76	37.49	
31.05	27	24.89	25.58	25.28	35.3	30.73	36.03	34.36	33.24	
27.52	23.81	21.94	22.57	22.31	31.26	27.1	31.89	30.47	29.49	
24.36	21	19.33	19.93	19.66	27.71	23.95	28.31	27.03	26.17	
21.61	18.58	17.04	17.58	17.37	24.59	21.14	25.1	24.01	23.24	
19.2	16.42	15.04	15.56	15.32	21.81	18.7	22.27	21.36	20.68	
17.04	14.51	13.28	13.79	13.55	19.35	16.56	19.78	18.99	18.39	
15.17	12.9	11.76	12.21	12.02	17.23	14.66	17.59	16.9	16.37	
13.51	11.44	10.44	10.81	10.63	15.28	13	15.66	15.06	14.59	
12.04	10.18	9.264	9.633	9.441	13.63	11.53	13.95	13.42	13.01	
Samp11 r	Samp12 r	Samp13 r	Samp14 r	Samp15 r	Samp16 r	Samp17 r	Samp18 r	Samp19 r	Samp20 r	
3/21/03 4:00					3/21/03 12:30					
Average peak max			1457.2		Average peak max			2302.4		
BCDMH Conc. (mM)			0.0292		BCDMH Conc. (mM)			0.04611		

Continuous System 10 (pg 3 of 7)

0.272	0.272	0.272	0.272	0.272	0.272	0.272	0.272	0.272	0.272	0.272
0.19	1.468	0.244	0.081	0.068	1.129	2.272	0.272	0.327	0.122	
0.231	1.522	0.271	0.122	0.136	1.184	2.286	0.34	0.34	0.163	
86.46	202.3	182.4	250.7	256.1	197.4	183.5	161.7	145.4	10.29	
1676	1710	1058	959.3	1083	2477	1464	1200	1522	1935	
257.9	245.3	262.7	213	190.6	248.3	225.7	221.5	223.4	235.6	
218.1	198.8	199.1	182.2	167.6	206.3	192.5	188.9	187	196.5	
189	172.7	172.2	158	149.4	179.7	167.7	165.6	163.6	171.5	
164.6	150.2	149.9	137.5	133.1	157.2	146.3	145.2	143.6	150.6	
143.7	130.7	130.9	125.4	124.5	137.3	127.6	127.3	125.9	132.4	
125.5	119.6	120.4	110	111.8	126.2	117.1	117.5	116.8	122.2	
115.9	105.1	106.2	96.31	100.2	111.1	103	103.9	102.7	108.3	
101.9	92.11	93.44	84.4	89.9	97.79	90.41	91.79	90.6	95.81	
89.75	80.84	82.28	74.02	80.65	86.17	79.42	81.04	79.85	84.79	
79.17	71	72.58	64.95	72.4	75.94	69.86	71.67	70.51	75.1	
69.82	62.39	64	57.04	65.04	66.84	61.42	63.35	62.31	66.51	
61.65	54.9	56.49	50.11	58.42	58.97	54.09	56.06	55.11	58.97	
54.3	48.3	49.91	44.09	52.49	52.05	47.64	49.62	48.69	52.2	
47.98	42.56	44.17	38.79	47.2	45.98	41.98	43.95	43.09	46.32	
42.45	37.49	39.06	34.13	42.43	40.67	37.02	38.92	38.14	41.11	
37.57	33.08	34.58	30.09	38.15	35.98	32.66	34.49	33.79	36.48	
33.27	29.19	30.64	26.49	34.36	31.87	28.83	30.59	29.92	32.4	
29.48	25.78	27.17	23.38	30.92	28.23	25.47	27.12	26.55	28.77	
26.14	22.81	24.11	20.62	27.84	25.02	22.53	24.07	23.53	25.55	
23.16	20.18	21.39	18.24	25.06	22.19	19.93	21.38	20.89	22.71	
20.59	17.85	19	16.11	22.58	19.72	17.66	18.98	18.52	20.22	
18.27	15.83	16.89	14.24	20.33	17.51	15.65	16.89	16.45	18	
16.21	14.05	15.05	12.6	18.35	15.59	13.89	15.02	14.63	16.02	
14.43	12.5	13.37	11.17	16.53	13.89	12.36	13.36	13.02	14.25	
12.84	11.13	11.95	9.881	14.91	12.38	10.97	11.92	11.58	12.74	
11.46	9.894	10.66	8.78	13.46	11.05	9.77	10.61	10.34	11.32	
Samp21 rt Samp22 rt Samp23 rt Samp24 rt Samp25 r					Samp26 rt Samp27 rt Samp28 rt Samp29 rt Samp30 r					
3/20/03 17:30					3/20/03 9:30					
Average peak max			1297.26		Average peak max			1719.6		
BCDMH Conc. (mM)			0.026		BCDMH Conc. (mM)			0.03445		

Continuous System 10 (pg 4 of 7)

0.272	0.272	0.272	0.272	0.272	0.272	0.272	0.272	0.272	0.272	0.272	
0.054	0.258	0.108	0.258	0.108	0.121	0.189	0.284	0.216	0.216		
0.136	0.299	0.149	0.312	0.163	0.162	0.243	0.366	0.243	0.284		
1065	395.2	162	156.3	182.2	682.9	446.2	185.7	202.5	290.2		
2770	1233	1036	1151	1011	5411	3689	2017	1662	1230		
205.6	195.9	195.2	181	210.2	300.1	234.1	192.3	181.2	173.1		
178.6	170.2	166.5	157.5	166.7	252.5	199.4	166.7	155.9	145.9		
155.8	149.9	145	137.9	145	219	174	146.7	136.6	127.7		
135.8	131.7	126.8	126.9	128.2	192.5	152.6	129.3	126.2	118		
124.4	121.9	117	112.2	119.4	169.2	134.2	119.4	111.9	104.6		
109.3	108.2	103.2	98.97	106.5	148.3	123.9	106.1	98.95	92.4		
95.93	95.65	90.92	87.32	94.82	129.9	110	94.07	87.65	82.03		
84.12	84.68	80.14	77.1	84.42	119.7	97.3	83.51	77.61	72.63		
73.86	74.96	70.67	68.1	75.22	105.8	86.1	74.15	68.79	64.27		
64.83	66.39	62.34	60.16	67	93.28	76.21	65.91	61.01	56.84		
56.93	58.83	55.01	53.17	59.7	82.29	67.48	58.62	54.1	50.33		
50.01	52.17	48.56	47.01	53.23	72.67	59.79	52.09	48.02	44.56		
43.96	46.23	42.9	41.55	47.44	64.19	52.98	46.3	42.61	39.47		
38.68	40.97	37.92	36.76	42.32	56.68	46.95	41.17	37.81	34.97		
34.02	36.38	33.51	32.51	37.79	50.13	41.61	36.62	33.56	30.98		
29.94	32.26	29.67	28.77	33.72	44.33	36.9	32.57	29.81	27.45		
26.39	28.63	26.24	25.47	30.1	39.24	32.76	28.97	26.47	24.32		
23.24	25.4	23.23	22.56	26.88	34.74	29.04	25.78	23.52	21.58		
20.52	22.6	20.56	19.99	24	30.75	25.81	23.05	20.91	19.15		
18.12	20.06	18.22	17.71	21.46	27.23	22.91	20.52	18.59	16.98		
16	17.83	16.16	15.71	19.19	24.15	20.35	18.26	16.53	15.06		
14.15	15.86	14.34	13.92	17.15	21.43	18.1	16.28	14.71	13.38		
12.52	14.12	12.73	12.35	15.36	19	16.08	14.49	13.09	11.9		
11.09	12.58	11.32	10.98	13.75	16.88	14.3	12.9	11.68	10.58		
9.853	11.23	10.06	9.744	12.3	15.01	12.74	11.53	10.39	9.403		
8.738	9.989	8.956	8.643	11.02	13.34	11.36	10.27	9.268	8.372		
Samp31 r	Samp32 r	Samp33 r	Samp34 r	Samp35 r	Samp36 r	Samp37 r	Samp38 r	Samp39 r	Samp40 r		
3/22/03 15:00					3/22/03 21:00						
Average peak max				1440.2	Average peak max				2801.8		
BCDMH Conc. (mM)				0.02886	BCDMH Conc. (mM)				0.05609		

Continuous System 10 (pg 5 of 7)

0.272	0.272	0.272	0.272	0.272	0.272	0.272	0.272	0.272	0.272	0.272
0	0.422	0.272	1.089	0.259	1.432	0.259	0.123	0.191	0.273	
0	0.449	0.3	0.967	0.313	1.391	0.3	0.164	0.259	0.328	
57.45	73.65	141.9	11.87	137.8	30.26	123.3	246.5	126.3	376.5	
1490	1060	941.8	2000	905.8	1846	1518	1214	980.2	947.1	
205.9	182.3	183.7	178.6	174.2	201.5	199	196.5	179.3	203.5	
172.7	153.2	143.6	149.6	148	174.8	168.6	164.8	150.9	160.7	
148.8	132.8	124.6	131.1	128.7	154.7	148.2	142.7	131	140.5	
129	121.5	115.2	121.2	118.3	136.5	129.1	124.2	120	123.4	
118.2	106.7	101.4	107.5	104.1	126.5	118.5	114.4	105.5	114.7	
103.7	93.58	89.3	95.18	91.44	112.5	104.4	100.3	92.53	101.4	
90.89	82.08	78.71	84.27	80.45	99.84	91.74	88.09	81.24	89.71	
79.76	72.08	69.41	74.67	70.76	88.6	80.7	77.34	71.35	79.39	
70.08	63.33	61.24	66.17	62.22	78.71	71.01	68.01	62.66	70.27	
61.6	55.68	54.04	58.67	54.73	69.98	62.54	59.8	55.11	62.25	
54.15	48.98	47.71	52.05	48.25	62.23	55.08	52.63	48.47	55.13	
47.68	43.07	42.18	46.2	42.48	55.36	48.57	46.35	42.67	48.85	
41.98	37.95	37.26	41	37.43	49.28	42.86	40.81	37.54	43.27	
36.99	33.4	32.93	36.41	32.97	43.89	37.81	36	33.06	38.37	
32.6	29.42	29.15	32.34	29.07	39.11	33.37	31.72	29.12	34.04	
28.73	25.95	25.79	28.72	25.62	34.87	29.44	27.99	25.67	30.18	
25.35	22.87	22.8	25.54	22.63	31.11	26	24.7	22.61	26.79	
22.37	20.18	20.2	22.71	19.95	27.75	22.98	21.81	19.96	23.77	
19.78	17.82	17.9	20.18	17.62	24.81	20.3	19.29	17.6	21.09	
17.48	15.73	15.86	17.96	15.55	22.16	17.97	17.05	15.55	18.74	
15.45	13.89	14.05	15.99	13.74	19.82	15.91	15.06	13.73	16.67	
13.63	12.27	12.48	14.24	12.14	17.72	14.04	13.32	12.12	14.8	
12.06	10.84	11.07	12.68	10.71	15.87	12.45	11.81	10.71	13.15	
10.7	9.599	9.83	11.29	9.476	14.22	11.03	10.47	9.501	11.72	
9.49	8.496	8.754	10.06	8.4	12.76	9.76	9.256	8.397	10.41	
8.401	7.543	7.788	8.987	7.434	11.44	8.656	8.247	7.429	9.283	
Samp41 r	Samp42 r	Samp43 r	Samp44 r	Samp45 r	Samp46 r	Samp47 r	Samp48 r	Samp49 r	Samp50 r	
3/23/03 0:00					3/23/03 2:00					
Average peak max			1279.52		Average peak max			1301.06		
BCDMH Conc. (mM)			0.02565		BCDMH Conc. (mM)			0.02608		

Continuous System 10 (pg 6 of 7)

0.272	0.272	0.272	0.272	0.272	0.272	0.272	0.272	0.272	0.272	0.272
0.546	0.218	0.055	0.218	0	0.86	0.11	0.055	0.014	0.723	
0.477	0.246	0	0.259	0.041	0.819	0.137	0.11	0.055	0.587	
3.054	0.982	0.028	13.83	92.86	914	121.4	31.21	40.71	59.23	
1497	1189	1233	988.4	1051	1143	1278	1154	1419	1246	
186.5	176.1	176.9	169.7	170.2	195.5	187.8	179.2	188.3	193	
156.6	144.9	142.1	138.4	143.5	157.7	154.8	147.4	158.6	160.5	
135.3	124.7	123.1	125.5	124.7	136.8	134.3	128	138.7	139.2	
123.7	114.8	113.9	110	115	125.5	123.1	117.9	127.6	127.4	
108.7	100.5	100.2	96.34	101.4	110.8	108.4	104.1	112.9	112.3	
95.51	88.12	88.25	84.41	89.13	97.61	95.37	91.83	99.66	98.97	
83.99	77.3	77.83	74.04	78.39	86.13	83.91	81.08	88.04	87.24	
73.49	67.88	68.68	64.96	68.98	76.05	73.89	71.48	77.83	76.93	
65.1	59.67	60.63	57	60.72	67.17	65.11	63.18	68.84	67.93	
57.38	52.52	53.57	50.1	53.5	59.37	57.37	55.87	60.96	59.99	
50.58	46.19	47.35	44.04	47.13	52.54	50.57	49.4	53.94	53.02	
44.61	40.69	41.89	38.7	41.57	46.49	44.6	43.73	47.8	46.87	
39.42	35.83	36.8	34.03	36.64	41.18	39.36	38.74	42.36	41.46	
34.8	31.61	32.51	29.95	32.32	36.46	34.75	34.31	37.56	36.69	
30.75	27.9	28.8	26.36	28.53	32.32	30.7	30.4	33.32	32.44	
27.21	24.6	25.54	23.21	25.17	28.68	27.11	26.95	29.55	28.73	
24.06	21.74	22.63	20.47	22.22	25.45	23.96	23.92	26.24	25.46	
21.3	19.21	20.09	18.02	19.64	22.57	21.19	21.21	23.28	22.54	
18.86	16.97	17.83	15.91	17.35	20.06	18.74	18.81	20.7	19.97	
16.72	15.01	15.85	14.04	15.36	17.81	16.6	16.73	18.38	17.7	
14.82	13.24	14.09	12.39	13.6	15.83	14.69	14.88	16.35	15.72	
13.13	11.74	12.51	10.93	12.04	14.09	13	13.19	14.55	13.95	
11.67	10.37	11.14	9.65	10.62	12.53	11.51	11.74	12.96	12.37	
10.35	9.201	9.909	8.546	9.419	11.17	10.22	10.42	11.52	10.98	
9.201	8.165	8.819	7.551	8.342	9.969	9.056	9.273	10.26	9.765	
8.165	7.238	7.865	6.693	7.401	8.878	8.047	8.264	9.151	8.66	
Samp51 r(Samp52 r(Samp53 r(Samp54 r(Samp55 r					Samp56 r(Samp57 r(Samp58 r(Samp59 r(Samp60 r					
3/23/03 12:00					3/23/03 15:00					
Average peak max			1191.68		Average peak max			1248		
BCDMH Conc. (mM)			0.02389		BCDMH Conc. (mM)			0.02502		

Continuous System 10 (pg 7 of 7)

0.272	0.272	0.272	0.272	0.272
0.11	0.22	0.083	0.11	0.247
0.151	0.261	0.124	0.138	0.261
2082	92.66	214.5	37.54	0.588
6103	4692	2761	2399	1473
326.2	268.6	232.1	211.9	223.8
274.9	228.6	198.6	182	176
239.3	199.2	174.1	159.7	154.5
209.9	174.7	153.4	140.9	136
184.2	153.4	135.4	124	126.1
162.2	134.6	125.4	115.5	111.9
142.5	124.3	111.5	102.4	99.1
125	110	99.01	90.85	87.81
116.2	97.26	87.96	80.58	77.82
102.8	86	78.13	71.37	69.03
91	76.08	69.5	63.41	61.23
80.58	67.35	61.66	56.37	54.33
71.44	59.65	54.84	50.1	48.24
63.19	52.75	48.83	44.57	42.86
56.04	46.74	43.47	39.66	38.02
49.72	41.44	38.71	35.3	33.81
44.17	36.74	34.47	31.42	30.04
39.24	32.58	30.71	27.94	26.71
34.85	28.92	27.38	24.89	23.77
30.97	25.66	24.4	22.41	21.16
27.57	22.78	21.75	19.92	18.85
24.51	20.22	19.41	17.72	16.78
21.85	17.98	17.31	15.78	14.95
19.44	15.99	15.47	14.07	13.33
17.32	14.22	13.79	12.56	11.89
15.47	12.64	12.32	11.2	10.59

Samp61 r(Samp62 r(Samp63 r(Samp64 r(Samp65 r(

3/23/03 15:00

Average peak max	3485.6
BCDMH Conc. (mM)	0.06977

Continuous System 10: Disappearance of BCDMH

