

Figure 35. ESI-TOF MS analysis of pure *T. maritima* D54C/C81S CheY. From right to left are the m/z values of the +9 to +22 charge states.

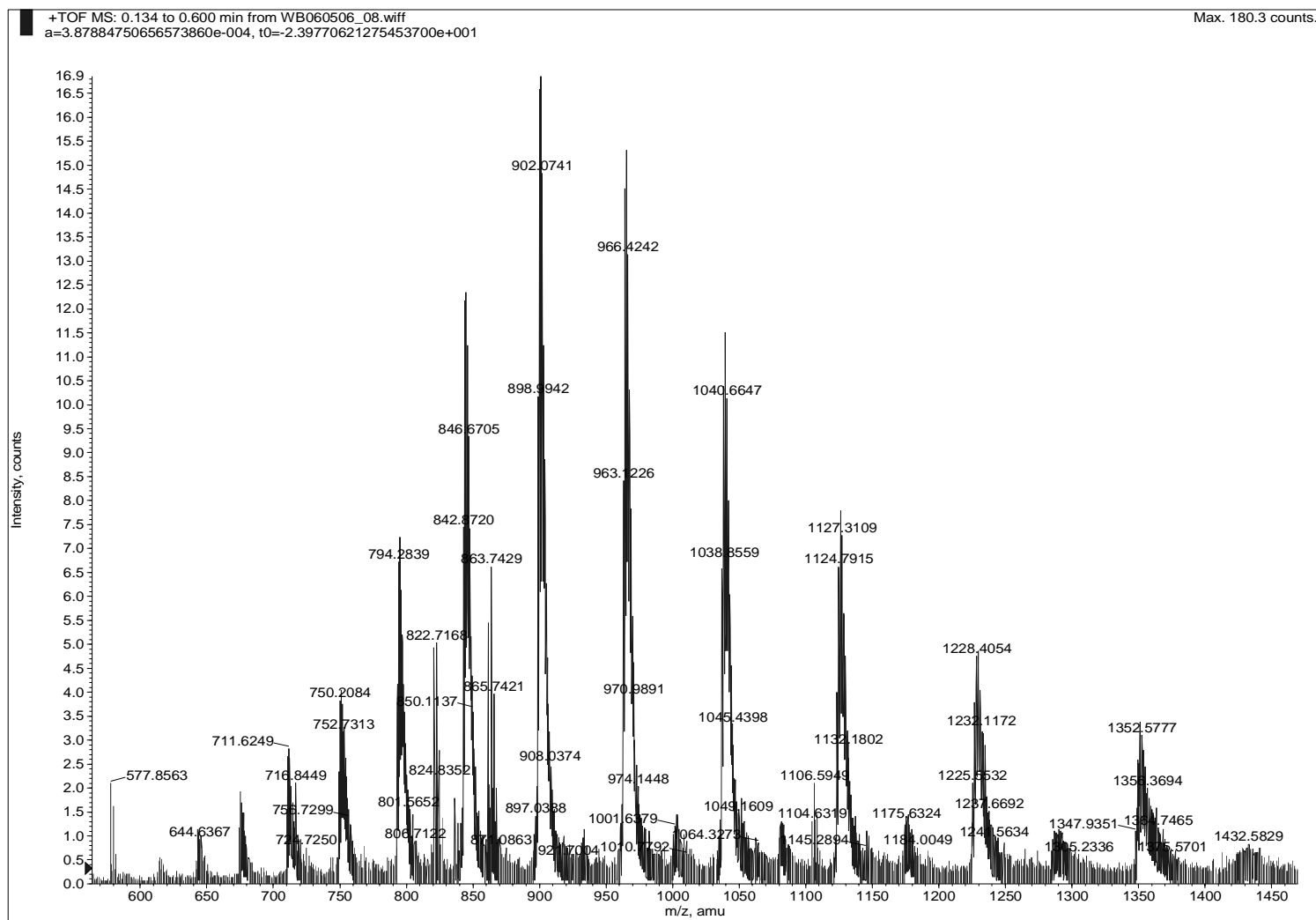


Figure 37. ESI-TOF MS Analysis of Full-Length *T. maritima* Phosphono-CheY. An envelope containing the +10 to +17 charge states of the protein is found.

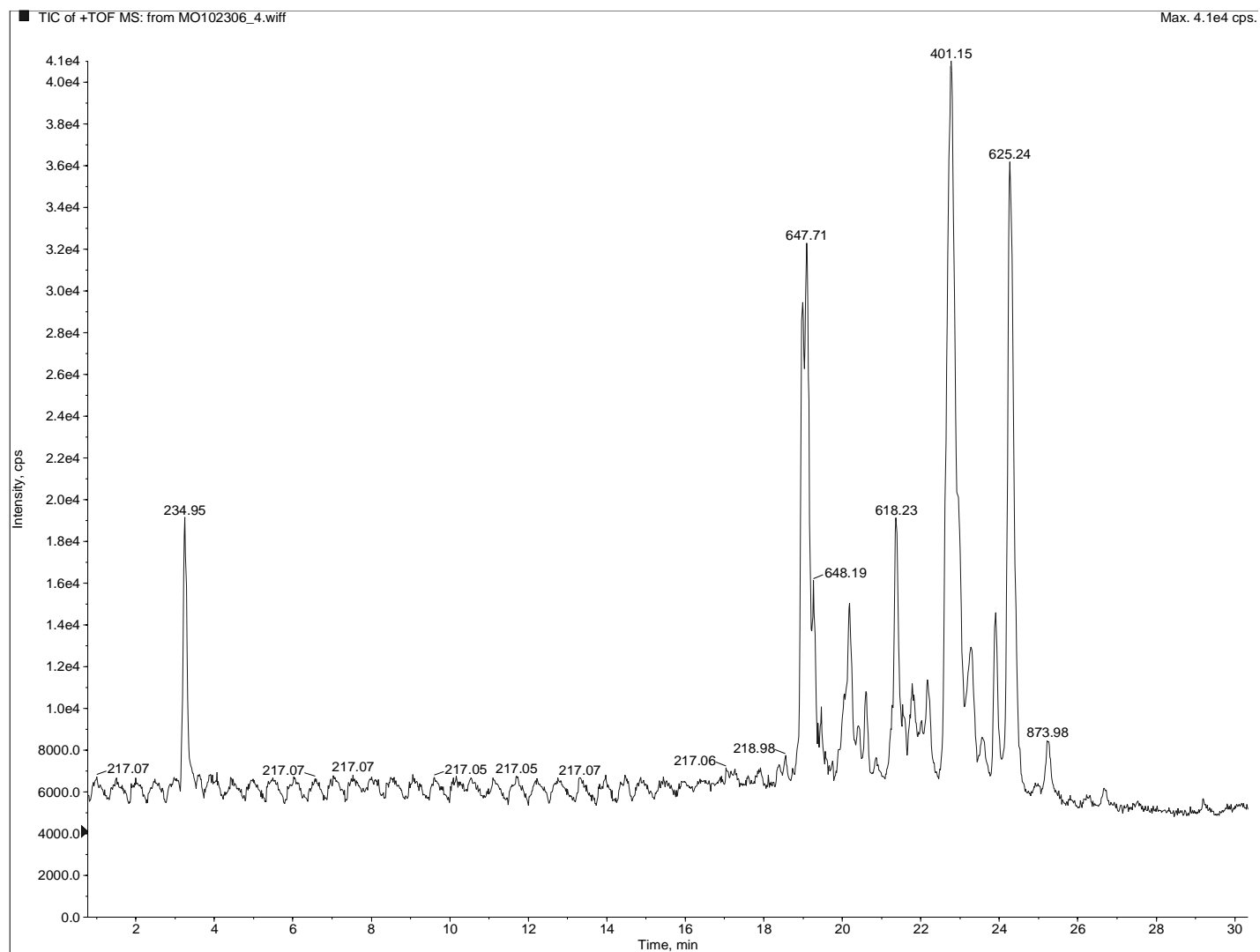


Figure 40. Total ion count peptide map generated by ESI-TOF MS analysis of the tryptic peptides of unmodified *T. maritima* D54C/C81S CheY.

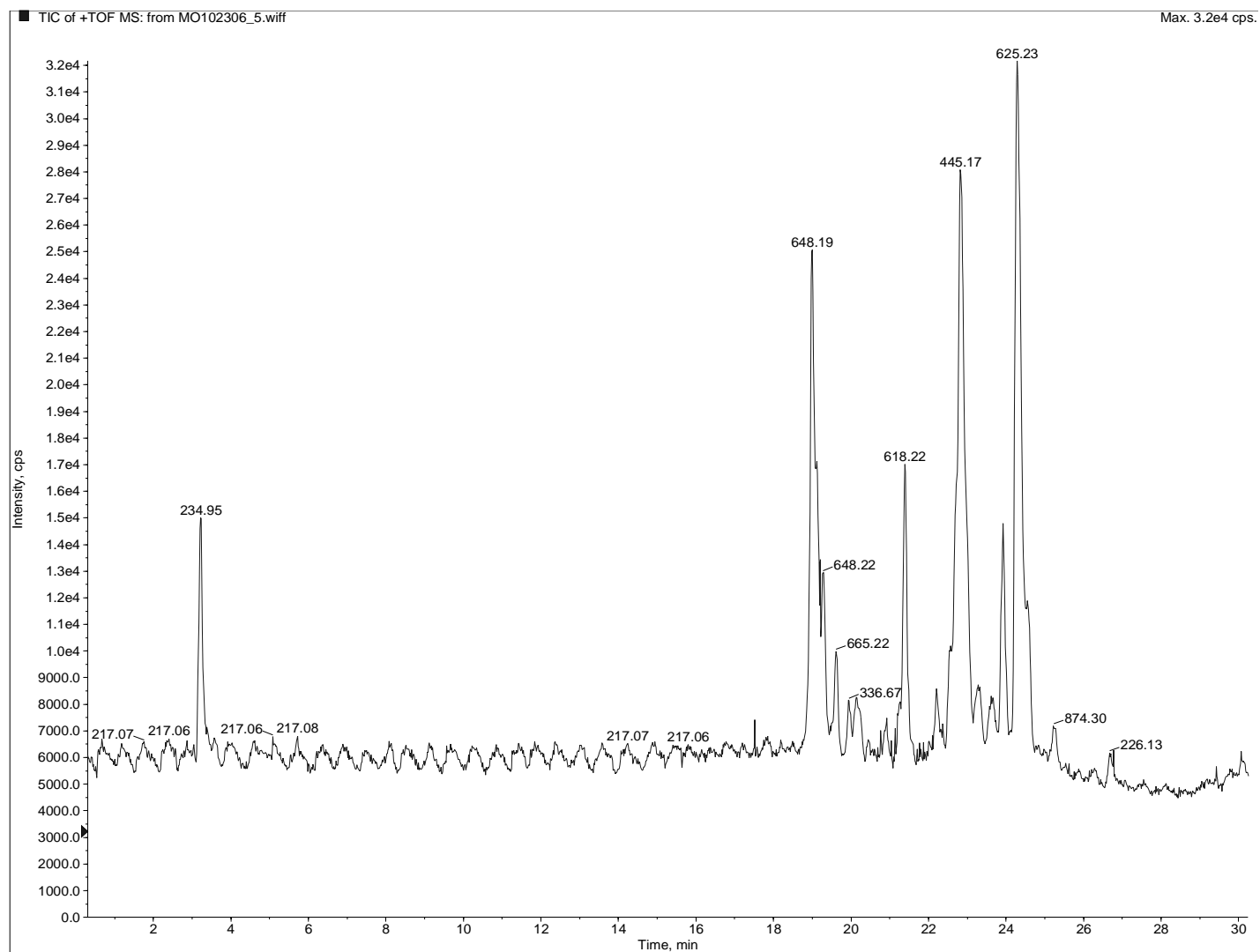


Figure 41. Total Ion Count Peptide Map generated by ESI-TOF MS analysis of the tryptic peptides of *T. maritima* Phosphono-CheY.

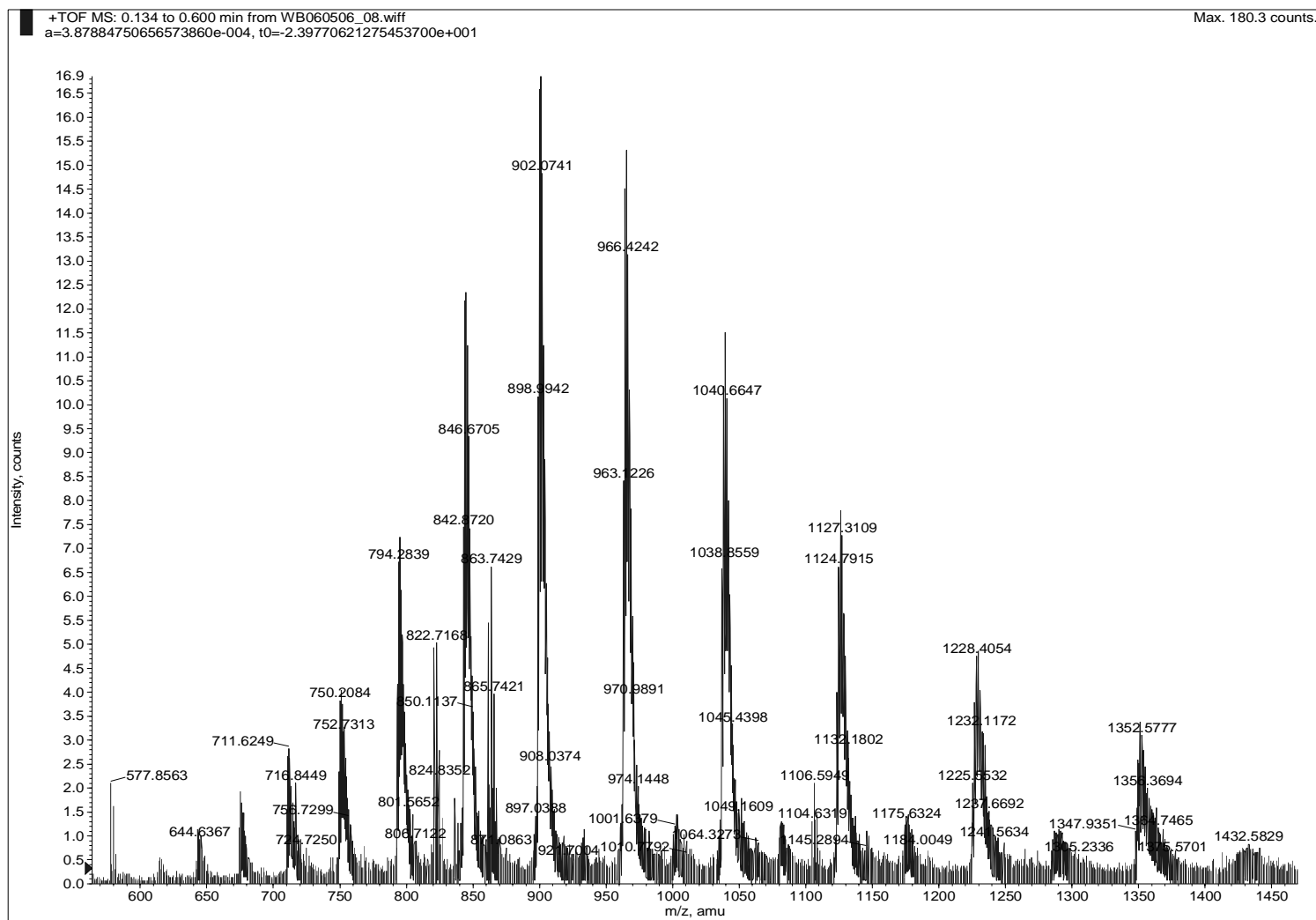


Figure 42. ESI-TOF MS analysis of CheY*.

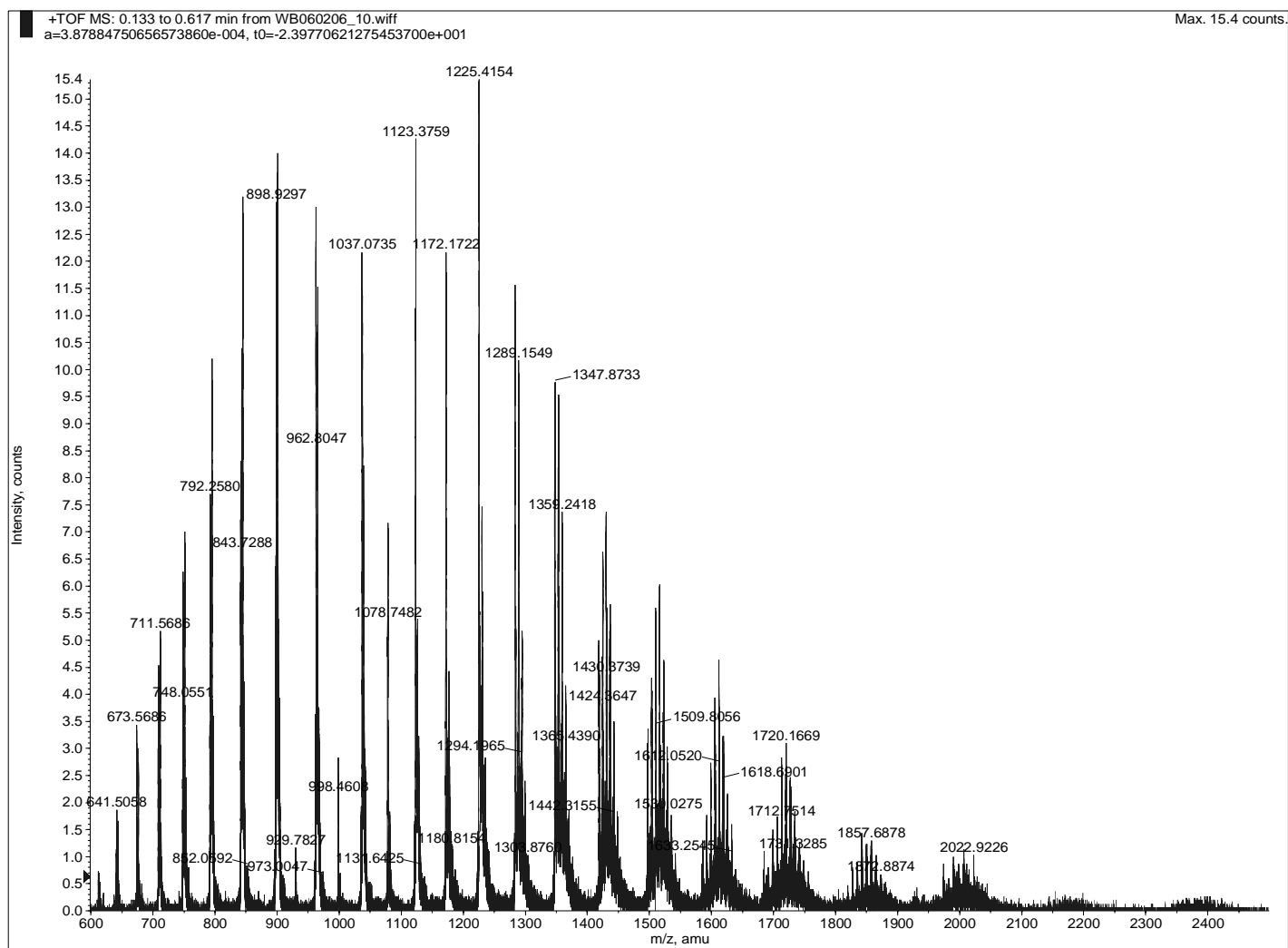


Figure 43. ESI-TOF MS analysis of CheY* (*T. maritima* D54C/C81S CheY) is present in the +10 to +21 charge states. This spectrum suggests CheY* may be CheY dimerization but gives no information as to whether it is a covalent or non-covalent dimerization.