

---

# Navigating Change: Academic Libraries Focused on Student Success



# Our team



**Dr. Lucy Holman**  
Associate Provost / Dean of the Library  
UNC Wilmington



**Michael Crumpton**  
Professor / Dean of the University Libraries  
UNC Greensboro



**Kelly Karpinsky (Brubaker), AIA, LEED AP**  
Principal  
Shepley Bulfinch



**Laura Miller, AIA, LEED AP**  
VP / Wilmington Office Leader  
LS3P



**Matt Takacs, AIA, NCARB, LEED AP**  
Project Manager  
LS3P

---

# Learning Objectives

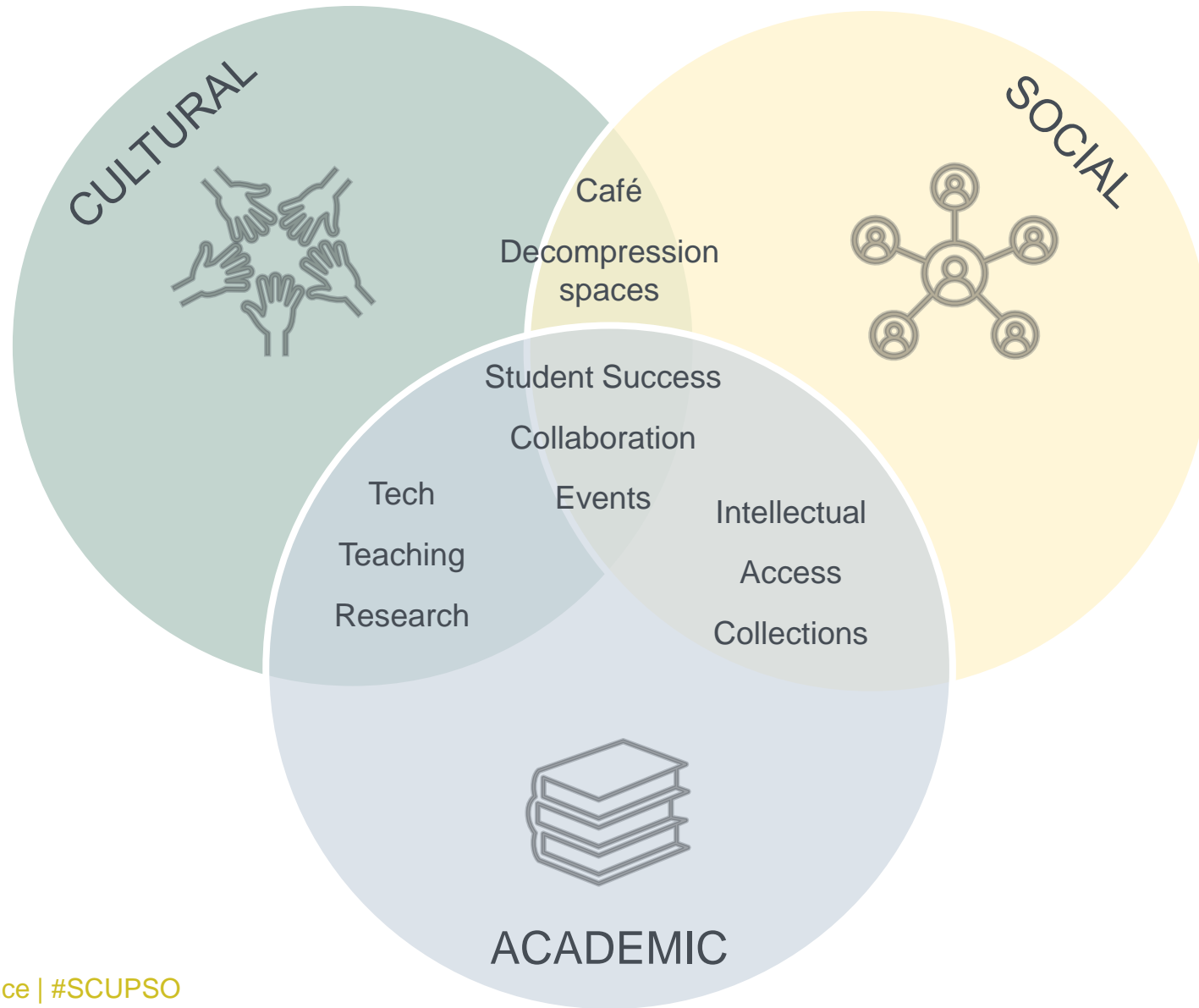
# Learning Objectives

1. Identify ways the campus library can respond to evolving community needs to provide access to knowledge and resources across a wide range of formats.
2. Build a program of flexible spaces and repurposed traditional, underperforming spaces to serve a variety of users and needs as academic programs, services, and priorities change.
3. Plan for ways the library can serve as the gateway to access a variety of resources, including technology support and campus services, to promote student success.
4. Create safe, welcoming spaces for inclusion and community that promote a sense of belonging through materials, furnishings, displays, and wayfinding that promote “informative comfort.”

---

# Library Opportunities

# Library is a Campus Hub



# Library is a Campus Hub



# Library Supports the Whole Person





# Library Supports the Whole Person

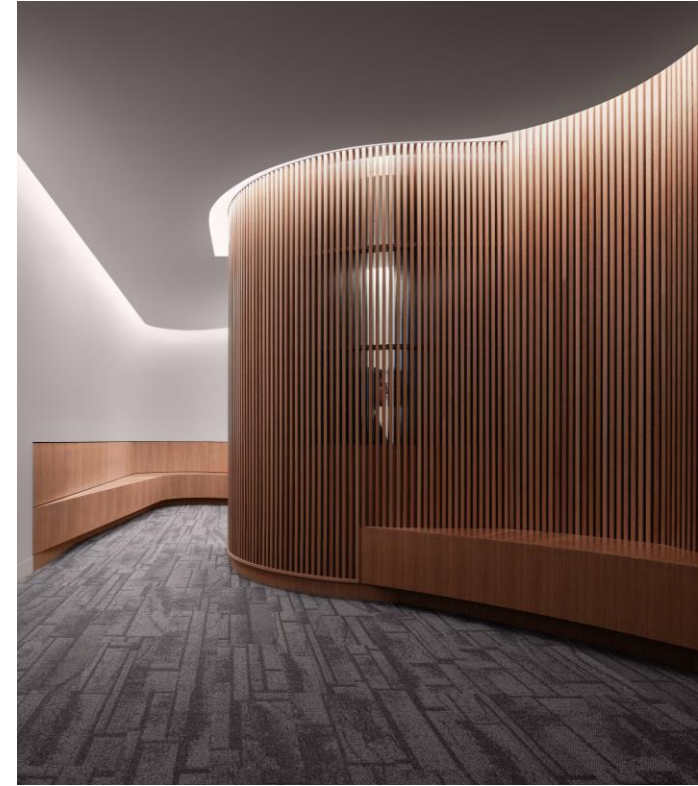
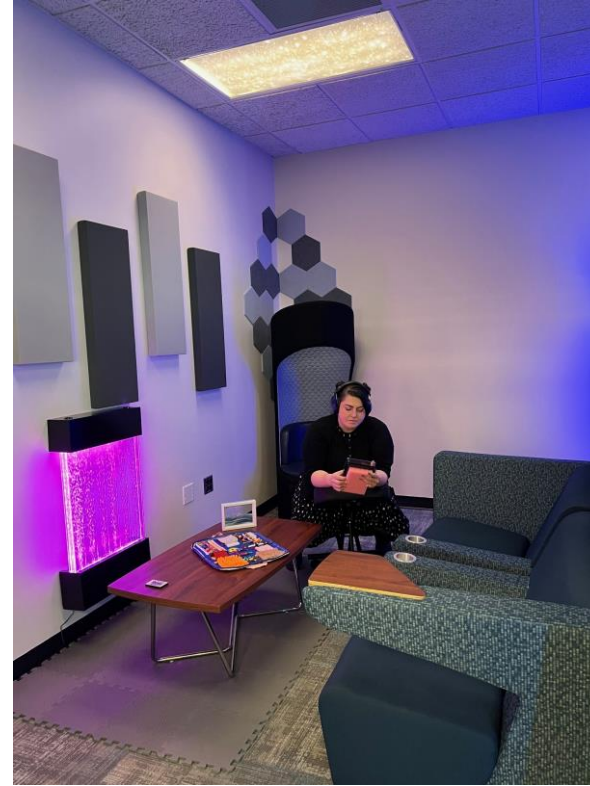


Welcoming



Access & Visibility

# Library Supports the Whole Person



# Library is Flexible/Adaptable



# Library is a Gateway | Campus Ecosystem



# Library is a Gateway | Partners Host vs. Home



Pop-Up



Share Space



Dedicated

# Library is a Gateway | Technology



Makerspace



Production Studios



VR

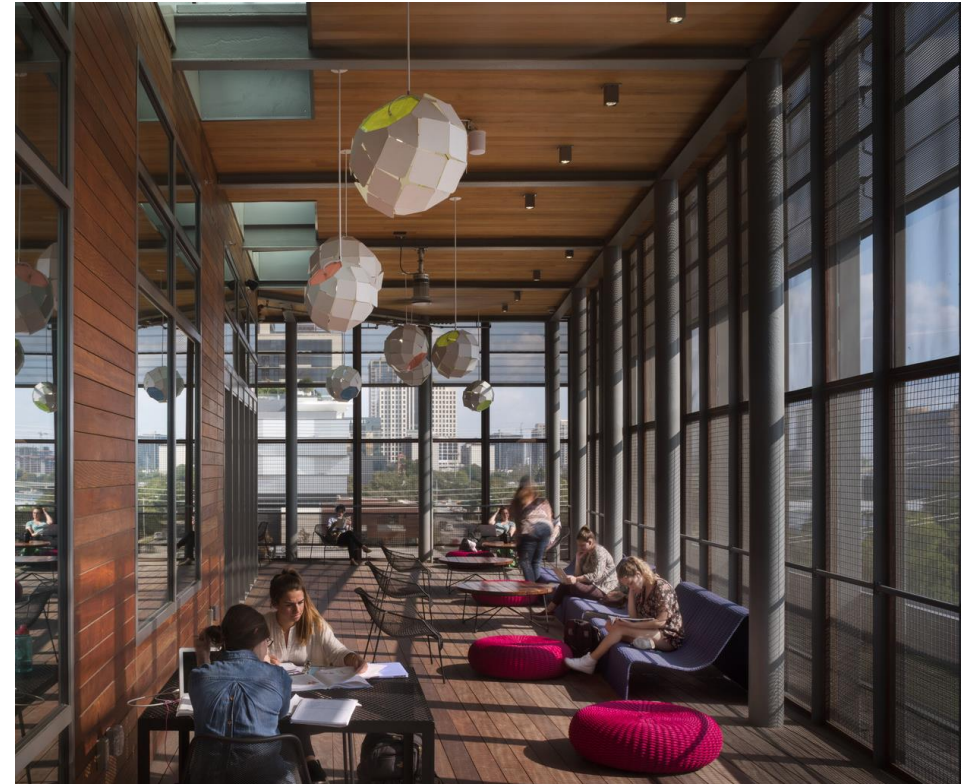
# Library is Connected to Environment



Connection to Daylight



Connection with Nature



Connection with Place/Culture

---

# UNC Wilmington





# Context

- Growth
- Demographics
- Disciplines
- Library staff growth
- Emphasis on:
  - Research
  - Graduate student enrollment
  - Community engagement



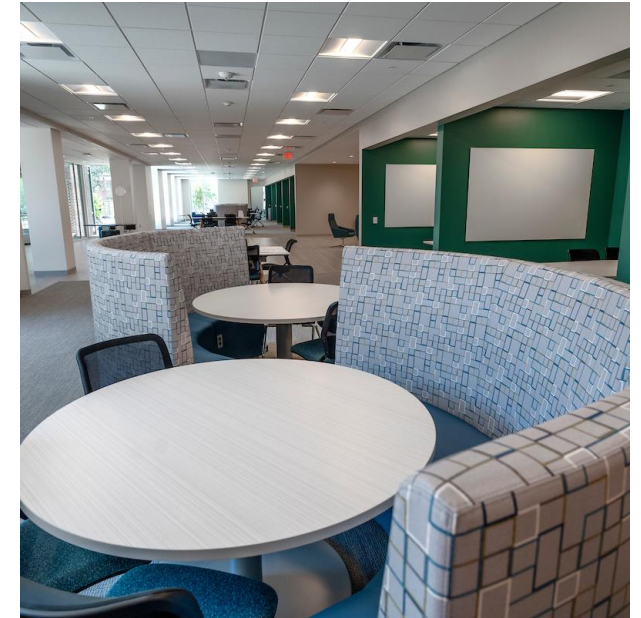


# Considerations

- Student seating
- Graduate student/faculty research services
- Community spaces
- Flexibility/optimizing space

# Design Principles

- Transformative, learner-centered, technology-enabled spaces
- Campus hub – the “intellectual heart” of the campus
- Community gateway & resource, showcasing our unique materials
- "Learning on display"



# Challenges/Project Evolution

- Operations during 2-year expansion/ renovation project
- Changing expectations of working environment (post-COVID)
- Changing nature of student study (post-COVID)
- Growing emphasis on health & wellness



---

# UNC Greensboro



# Context at UNCG

- Dated facility, 1950 & 1970's
- Increase in student population by 200% since latest major work
- Woman's College to Minority Servicing Institution
- Life Safety/Code Compliance  
Deferred Maintenance issues
- Center of campus, very visible,  
high traffic
- Accessibility issues



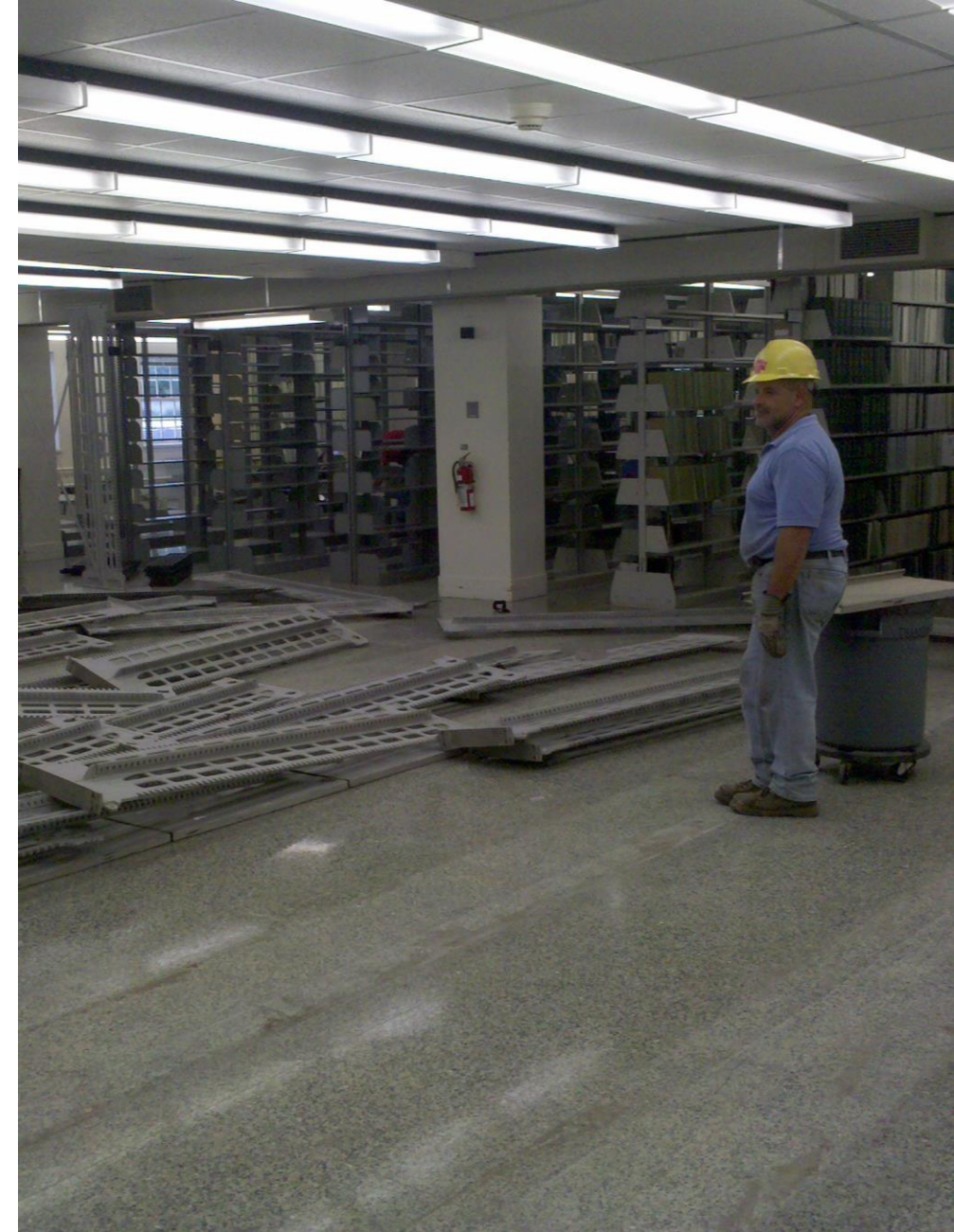


# Student Needs

- More space for users with diverse options
- Modern/contemporary environment for inspiration
- Expanded services
- Changing resource formats and use

# Challenges

- No additional spaces
- Aging infrastructure limits spending options
- Multiple campus projects
- On the capital renovation list for over 20 years
- Life-safety issues





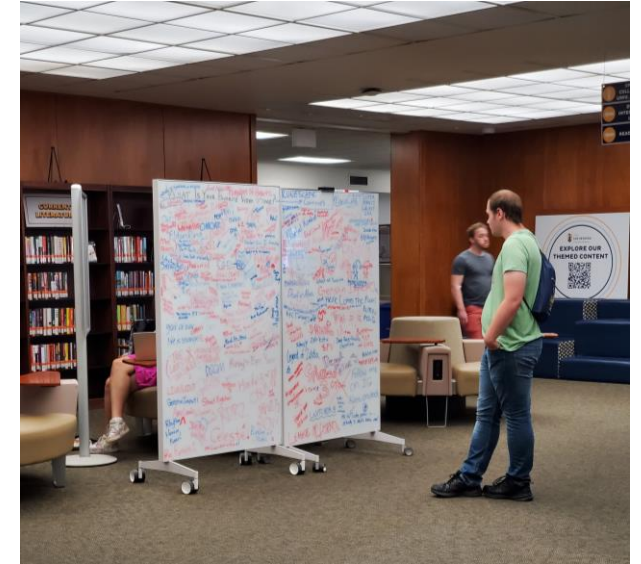


# Functional and Aesthetic updates

- More entrances and accessibility options
- Areas for convening, inside and outside
- Better use of natural light from window placements
- Central location lends to flow through traffic
- Dated interior needs contemporary make over
- Technology lost as add ons, needs prioritization

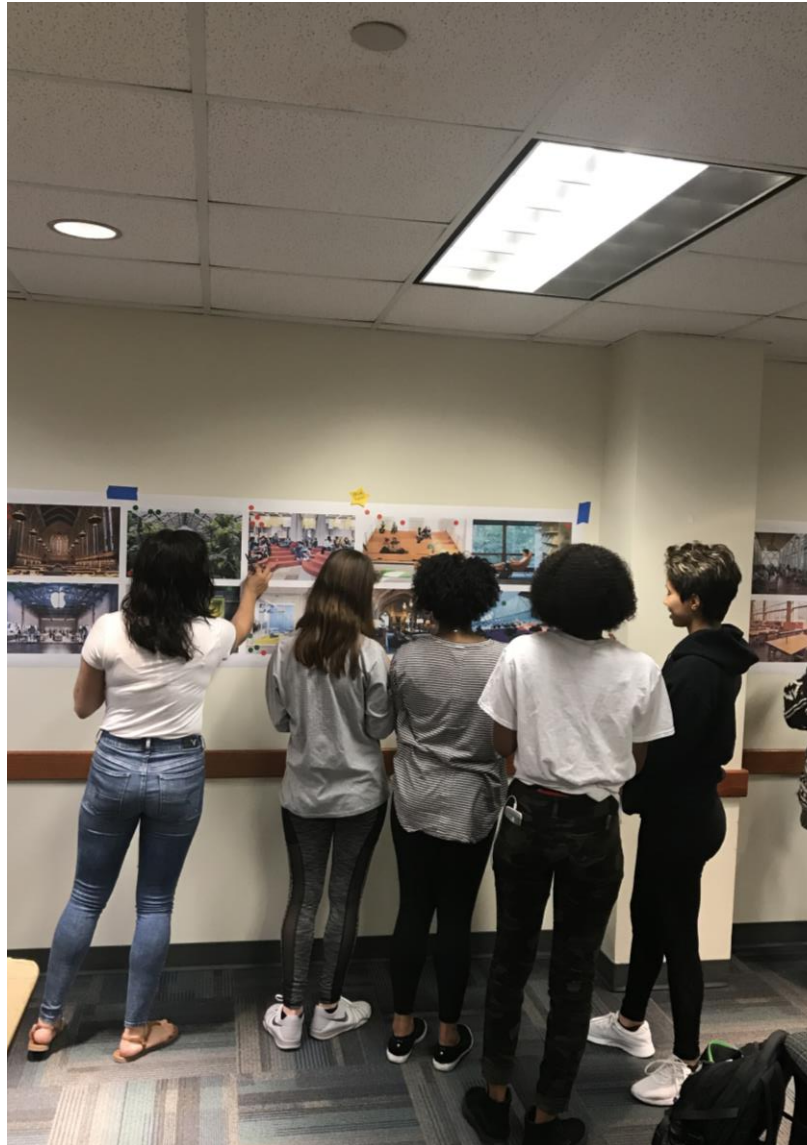
# Considerations

- Partners for one stop student needs
  - Academic Achievement Center
  - ITS Walk-in Center
- Library is for Everyone!
  - Makerspace
  - Art
  - Community needs
  - Communication venue



# Student Driven Ideas

- Focus groups and feedback
- Options for library use
- Signage and graphics that reflect what the library can do
- SWAG – Student Worker Advisory Group



# Guiding Principles

- Create a welcoming and inclusive library environment that reflects the inspiring diversity of the UNCG community and fosters a sense of ownership and belonging.
- Leverage space and technology to foster innovation, promote interdisciplinary collaboration, and empower students.
- Provide a collection of library partners that collaboratively establishes student success criteria.
- Develop an integrated services library model that establishes Jackson Library as the heart of campus.



---

# Panel Discussion



# Campus Partners



UNCW



UNCG

# UNC Wilmington

**Confirm captions are  
correct or edit as  
needed**



Before



After

# UNC Greensboro



Existing



Proposed



# UNC Greensboro



Existing



Proposed



**30 DAYS OF**  
**DISCOVERY**  
**DISCOVER \* LEARN \* WIN!**  
**AUGUST 21-SEPTEMBER 25**  
DISCOVERY HALL

FAVORITE STUDY SPOT  
**PHOTO CONTEST**  
**WINNER**

*Congrats!*  
**MADDY PARKER**

# Stakeholder Engagement



# Belonging



UNCW



UNCG

# UNCG Famous Donut!



# Signature spaces

- Group study (57 between both buildings)
- Visualization & Analysis Lab
- Recording studios
- MakerStudio
- Events space
- Exhibit Gallery
- Grand Reading Room
- Outdoor space (patio & lawn)
- Graduate Student Lounge
- Living Room
- Lookout
- Sensory-friendly study
- CSENCAH Reading Room
- Market 47



---

# Questions



Thank you.





# Thank you.

Dr. Lucy Holman, UNC Wilmington, [holmanl@uncw.edu](mailto:holmanl@uncw.edu)

Michael Crumpton, UNC Greensboro, [macrumpt@uncg.edu](mailto:macrumpt@uncg.edu)

Kelly Karpinsky, Shepley Bulfinch, [kkarpinsky@shepleybulfinch.com](mailto:kkarpinsky@shepleybulfinch.com)

Laura Miller, LS3P, [lauramiller@ls3p.com](mailto:lauramiller@ls3p.com)

Matt Takacs, LS3P, [matttakacs@ls3p.com](mailto:matttakacs@ls3p.com)

