

FACTS

1990-1991



James E. Shepard, Founder

**NORTH CAROLINA CENTRAL
UNIVERSITY**

**OFFICE OF
RESEARCH, EVALUATION AND PLANNING
DURHAM, NORTH CAROLINA**

FACTS 1990-1991



BY

HELEN FAUCETTE

JOYCE LATHAM

SENIOR ADVISORS:

F. MYRON DUNSTON

BRENDA H. ROGERS

LINDA K. PRATT

OFFICE OF RESEARCH, EVALUATION AND PLANNING

APRIL, 1991

TABLE OF CONTENTS

<u>List of Tables and Figures</u>	ii
<u>Preface</u>	v
<u>Facts About the University</u> <i>1990-91 enrollment 5480</i>	
List of Tables and Figures	1
Statement of Purpose	3
Statement of Accreditation	8
Non-Discrimination Statement of Policy	9
North Carolina Central University Organizational Charts, 1990-91	11
The University of North Carolina Board of Governors	16
The University of North Carolina Officers of General Administration, 1990-91	17
North Carolina Central University Board of Trustees	20
North Carolina Central University Officers and Administrative Staff, 1990-91	21
<u>Facts to Support Planning</u>	
List of Tables and Figures	33
<u>Facts About Students</u>	
List of Tables and Figures	51
<u>Facts About Faculty and Staff</u>	
List of Tables and Figures	79
<u>Appendix</u>	105

LIST OF TABLES AND FIGURES

Facts About the University

Table	1: Characteristics of NCCU Facilities	25
Table	2: Revenues and Expenditures for Fiscal Year, 1989-90	28
Figure	1: Expenditures by Budget Area Ten-Year Comparison	29
Table	3: Physical Plant Assets for Fiscal Year, 1989-90	30
Table	4: Student Tuition, Fees, and Charges for the 1990-91 Academic Year	31
Table	5: Library Staff, Collections and Expenditures, Fiscal Year 1990	32

Facts to Support Planning

Table	6: Degree Programs and Program Tracks	35
Table	7: Credit Hours Generated by Department for Academic Years 1986-87 Through 1989-90	39
Table	8: Grades Assigned by School (Distribution of Percentages)	41
Table	9: College of Arts and Sciences Profile	42
Table	10: School of Business Profile	43
Table	11: School of Education Profile	44
Table	12: School of Law Profile	45
Table	13: School of Library and Information Sciences Profile	46
Table	14: Students Enrolled, Graduated, Suspended, and Not Enrolled One Year After Initial Entry (Percentages)	47
Table	15: Graduation Percentages for First-Time Freshmen, 1977-1986	48
Table	16: A Comparison of First-Time Freshmen Enrolled or Graduated at NCCU, Traditionally Black Institutions (TBI), and in The UNC System (Percentages)	49
Table	17: Comparison of Faculty Salaries by Rank for NCCU and Comparable Public Universities, 1990-91	50

Facts About Students

Table	18: Number of Student Applicants, Acceptances, and Enrollees, Fall 1990	53
Figure	2: Comparison of Freshmen: Applicants, Acceptances, and Enrollees 1981-1990	54
Figure	3: Comparison of Transfers: Applicants, Acceptances, and Enrollees 1981-1990	54

Figure 4:	Comparison of Graduate Level: Applicants, Acceptances, and Enrollees 1981-1990	55
Figure 5:	Comparison of First Professional: Applicants, Acceptances, and Enrollees 1981-1990	55
Table 19:	Undergraduate Transfers into NCCU 1983-1990	56
Table 20:	Distribution of First-Time Freshmen by State, Fall 1990	57
Table 21:	Distribution of North Carolina First-Time Freshmen by County, Fall 1990	58
Table 22:	Distribution of SAT Scores of Entering Freshmen 1986-1990	59
Figure 6:	Average Freshman Total SAT Scores 1981-1990	60
Figure 7:	Average Verbal and Math SAT Scores 1981-1990	60
Figure 8:	Distribution of Total SAT Scores, 1990 Entering Freshmen (Percentages)	61
Figure 9:	Distribution of Math and Verbal SAT Scores, 1990 Entering Freshmen (Percentages)	61
Table 23:	High School Class Rank of Entering Freshmen 1986-1990	62
Table 24:	Average Age of First-Time Freshmen 1981-1990	62
Table 25:	General Characteristics of Enrollment 1988-1990	63
Table 26:	Summary of General Characteristics, Fall 1990	64
Table 27:	Distribution of Headcount Enrollment by Sex 1926-1990	65
Table 28:	Racial Composition of Headcount Enrollment 1982-1990	66
Table 29:	Geographic Origin of Students 1983-1990	67
Table 30:	Geographic Distribution of Students, Fall 1990	68
Table 31:	Distribution of North Carolina Students by County, Fall 1990	69
Table 32:	Mean Age of Undergraduate Students 1980-1990	70
Table 33:	Mean Age of Graduate and First Professional Students 1980-1990	70
Table 34:	Undergraduate Enrollment by Age, Fall 1990	71
Table 35:	Graduate and First Professional Enrollment by Age, Fall 1990	71
Table 36:	Undergraduate Enrollment by Field of Study 1986-1990	72
Table 37:	Graduate Enrollment by Field of Study 1986-1990	73
Table 38:	Undergraduate Degrees Conferred by Field of Study 1986-1990	74
Table 39:	Graduate and First Professional Degrees Conferred by Field of Study 1986-1990	75
Table 40:	Characteristics of Graduated Students, 1989-90	76

Table 41: Student Financial Aid 1989-90	77
Table 42: Financial Aid Awards Fiscal Year 1986-87 to 1989-90	78

Facts About Faculty and Staff

Table 43: Instructional Staffing Patterns by Department and Rank 1986-1990	81
Table 44: Tenure for Full-Time Faculty by Department, Fall 1990	86
Table 45: Tenure for Full-Time Faculty by Rank and Sex 1986-1990	87
Figure 10: Ten-Year Change of Rank and Tenure Status for Full-Time Faculty 1980 and 1990	88
Table 46: Highest Earned Degree for Full-Time Faculty by Department, Fall 1990	89
Table 47: Summary of Highest Earned Degree for Full-Time Faculty 1985-1990	90
Table 48: Race and Sex of Full-Time Faculty by Department and Academic Rank, Fall 1990	91
Table 49: Mean Salaries of Full-Time Instructional Faculty by Rank 1970-1990	96
Table 50: Mean Salaries of Full-Time Instructional Professors by Race and Sex 1980-1990	97
Table 51: Mean Salaries of Full-Time Instructional Associate Professors by Race and Sex 1980-1990	97
Table 52: Mean Salaries of Full-Time Instructional Assistant Professors by Race and Sex 1980-1990	98
Table 53: Mean Salaries of Full-Time Instructors by Race and Sex 1980-1990	98
Table 54: Summary of Mean Salaries of Full-Time Instructional Faculty by Academic Rank, Race, and Sex, Fall 1990	99
Table 55: Full-Time EPA and SPA Employees by Occupational Activity Category, Race, and Sex, Fall 1990	100
Table 56: New Full-Time EPA and SPA Employees by Occupational Activity Category, Race, and Sex, Fall 1990	101
Table 57: Retirements, Resignations, and Dismissals of Full-Time EPA and SPA Employees, Fall 1990	102
Table 58: Promotions of Full-Time EPA and SPA Employees, Fall 1990	103
Table 59: Summary of Mean Salaries of Full-Time Employees by Occupational Activity Category, Race, and Sex, Fall 1990	104

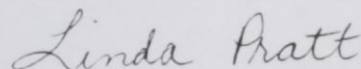
PREFACE

FACTS is North Carolina Central University's fact book. It is produced by the Office of Research, Evaluation and Planning to provide faculty, staff and administrators with a common base of data and information about the University. FACTS has been produced annually since 1969. Over that 22 year period, numerous changes in format have been made. All changes are directed toward the goal of providing information useful in planning, in reporting and in proposal preparation. To assist us in meeting that goal, we are asking all of you who use the FACTS to call us with suggestions for revisions or improvements for next year.

All tables are now Quattro Pro Spreadsheet files. We will be happy to supply copies of the files to anyone in the University Community who is interested. Please call the Office of Research, Evaluation and Planning with your request.

Ms. Helen Faucette, and Ms. Joyce Latham have spent many hours preparing FACTS for 1990-91. Dr. Brenda Rogers and Mr. Myron Dunston have assisted in planning and in preparing data for the document.

Linda K. Pratt



Associate Vice Chancellor for
Academic Affairs for Research,
Evaluation and Planning

FACTS ABOUT THE UNIVERSITY

LIST OF TABLES AND FIGURES

Table	1: Characteristics of NCCU Facilities	25
Table	2: Revenues and Expenditures for Fiscal Year, 1989-90	28
Figure	1: Expenditures by Budget Area Ten-Year Comparison	29
Table	3: Physical Plant Assets for Fiscal Year, 1989-90	30
Table	4: Student Tuition, Fees, and Charges for the 1990-91 Academic Year	31
Table	5: Library Staff, Collections and Expenditures, Fiscal Year 1990	32

NORTH CAROLINA CENTRAL UNIVERSITY

Statement of Purpose

History and Background. North Carolina Central University, a state-supported liberal arts institution, was chartered in 1909 as a private institution and opened to students on July 10, 1910. It was founded by Dr. James E. Shepard. From the beginning, when it was known as the National Religious Training School and Chautauqua, its purpose has been the development in young men and women of the character and sound academic training requisite for real service to the nation. To this end, the training of all students has been entrusted to the most capable teachers available.

The institution's early years were characterized by a wealth of enthusiasm and high endeavor, but not of money. Private donations and student fees constituted the total financial support of the school, and the heavy burden of collecting funds rested on the President.

In 1915, the school was sold and reorganized, then becoming the National Training School. During this period of its history, Mrs. Russell Sage of New York was a generous benefactor of the school.

In 1923, the General Assembly of North Carolina appropriated funds for the purchase and maintenance of the school; thus, in that year it became a publicly-supported institution and was renamed Durham State Normal School. Two years later, the General Assembly converted it into the North Carolina College for Negroes, dedicating it to the offering of liberal arts education and the preparation of teachers and principals of secondary schools.

At its 1927 session, the General Assembly began a program of expansion of the college plant to conform to the needs of an enlarged academic program. The interest of the honorable Angus W. McLean, then Governor of North Carolina, and his belief in the institution aided greatly in the promotion of this program. State appropriations were supplemented by a generous gift from B. N. Duke and by contributions from citizens of Durham in 1929. The 1930's afforded federal grants and State appropriations for a new program of physical expansion and improvement of educational facilities; this program continued until the beginning of World War II.

The College was accredited by the Southern Association of Colleges and Secondary Schools as an "A" class institution in 1937 and was admitted to membership in this association in 1957.

The General Assembly of 1939 authorized the establishment of graduate work in liberal arts and the professions. Pursuant thereto, graduate courses in the Arts and Sciences were first offered in that same year; the School of Law began operation in 1940, and the School of Library Science was established in 1941.

In 1947, the General Assembly changed the name of the institution to North Carolina College at Durham.

On October 6, 1947, Dr. Shepard, the founder and President of the college, died. The Board of Trustees appointed an interim committee consisting of Dr. Albert E. Manley, Dean of the College of Arts and Sciences; Miss Ruth G. Rush, Dean of Women; and Dr. Albert L. Turner, Dean of the School Law, to administer the affairs of the institution until the election of the second president.

On January 20, 1948, Dr. Alfonso Elder was elected President of the institution. At the time of his election, Dr. Elder was serving as head of the Graduate Department of Education and had formerly been Dean of the College of Arts and Sciences. Dr. Elder retired September 1, 1963.

Dr. Samuel P. Massie was elected as the third President of the college on August 9, 1963. Dr. Massie came to the institution from Washington, D.C., where he was Associate Program Director for Undergraduate Science Education of The National Science Foundation and Professor and Chairman of the Department of Pharmaceutical Chemistry at Howard University. He resigned on February 1, 1966.

The Board of Trustees appointed an interim committee consisting of William Jones, Business Manager; Dr. Helen G. Edmonds, Graduate Dean; and Dr. William H. Brown, Professor of Education, to administer the affairs of the institution until the fourth president took office.

On July 20, 1966, Dr. Albert N. Whiting was named the fourth president of the institution. He came to North Carolina College from Baltimore, Maryland, where he had been Dean of the Faculty of Morgan State College. Dr. Whiting served as President and Chancellor from July 1, 1967, until his retirement on June 30, 1983.

In 1969, the General Assembly changed the name of the institution to North Carolina Central University. On July 1, 1972, North Carolina Central University became a constituent institution of The University of North Carolina.

On July 1, 1983, Dr. LeRoy T. Walker became Interim Chancellor of the University. He had served the institution as Chairman of the Department of Physical Education and Recreation, Head Track Coach, and Vice Chancellor for University Relations. At their February 1986 meeting, the University of North Carolina Board of

Governors, at the request of the University's Board of Trustees, decreed that Dr. Walker was Chancellor of the University rather than Interim Chancellor and made that action retroactive to the beginning of his term.

Dr. Tyronza R. Richmond, formerly Dean of the School of Business, succeeded Dr. Walker as Chancellor on July 1, 1986. Prior to his arrival at North Carolina Central University, Dr. Richmond was Associate Dean and Professor at the School of Business and Public Administration at Howard University.

Mission

The following mission statement was formally adopted by the Board of Trustees of North Carolina Central University on March 11, 1987. It was amended for editorial changes on November 16, 1988.

North Carolina Central University is a comprehensive university offering programs at the bachelor's and master's levels and at the first professional level in law.

The primary mission of North Carolina Central University is to provide its students with an educational environment that will stimulate their intellectual curiosities; enhance and develop academic and professional skills; instill a sense of pride, dignity and discipline; and promote a consciousness of social responsibility and dedication to the advancement of the general welfare of the people of North Carolina, of the United States, and of the world.

Historically, the majority of the constituents served by North Carolina Central University have been black. While the University will continue to educate its traditional clientele, it will continue, and increasingly seek, to be an educational resource to all of the people in its service area.

The University community recognizes that its student enrollment will reflect more diversity in all respects. This new diversity will constitute a major challenge in the faculty's responsibility of teaching, in research, in the development of curricula, in the availability of programs which support learning, in the University's outreach, and in the effectiveness of its administrative units. While the teaching of students is the University's primary focus, research for the benefit of the broader community is vital to the mission and must be pursued vigorously. The continued development of intellectual skills and self-discipline by all who reap the benefits of the University comprises the core of every aspect and phase of University life.

Finally, the University makes every effort to assure that the paths to learning at North Carolina Central University are open to all who by their ability and motivation show promise of success.

Institutional Goals

1. To improve enrollment management procedures including identifying prospective students, developing an effective marketing and recruiting strategy, admitting students with good chances of academic success, and retaining those students to graduation.
2. To further develop and maintain a climate where there is a University-wide commitment to the general welfare of the institution, open and candid communication, open and amicable airing of differences, and mutual trust and respect among students, faculty, staff, and administrators.
3. To encourage, support and reward outstanding performance in teaching research, service, and creative activities.
4. To further strengthen administrative support for coordination of research activities through workshops, seminars, and consultation with individuals and departments.
5. To support the development and accreditation of professional schools and programs.
6. To enhance and develop programs which will attract mature and non-traditional students to North Carolina Central University.
7. To further promote an image of a dynamic, innovative institution with programs that are responsive to the needs of all the people in its service area.

Educational Goals

1. To ensure that undergraduate students gain a knowledge of their cultural heritage as a framework for better understanding the diversity inherent in the existing social order.
2. To ensure that undergraduate students acquire a sense of history, an understanding of science, an appreciation of the fine and performing arts, and an understanding and appreciation of other cultures.

3. To encourage among all students an attitude about learning and intellectual work which includes familiarity with research and problem solving methods, the ability to employ critical thinking skills, the ability to synthesize knowledge from many sources, the enhancement of communication skills, the capacity for self-directed learning, and a commitment to life-long learning.
4. To ensure that all students acquire both general and specialized knowledge, thus contributing to high intellectual standards on campus and preparing students for advancement after graduation.

STATEMENT OF ACCREDITATION

North Carolina Central University is accredited by the Commission on Colleges of the Southern Association of College and Schools to award bachelor's degrees and master's degrees.

The School of Law is accredited by the American Bar Association. The program in Library Science is accredited by the American Library Association and the program in Nursing by the Accrediting Services, National League for Nursing, Inc. Programs at the bachelor's and master's levels in early childhood education, elementary teaching, secondary teaching, and K-12 teaching; and at the master's level in educational communication and information technology, school principalship, supervision/curriculum development, and guidance counseling are accredited by the National Council for Accreditation of Teacher Education (NCATE). All of these specialized accrediting bodies are recognized by the Council on Postsecondary Accreditation and the U.S. Department of Education.

Teacher Education Programs are approved by the North Carolina State Department of Public Instruction. The North Carolina Board of Nursing approves the Nursing Program. The School of Law is approved by the North Carolina State Bar Council.

NON-DISCRIMINATION STATEMENT OF POLICY

This University is committed to the principle that the employees shall be identified initially, and thereafter differentiated among, only on the basis of good-faith assessments of individual professional merit. Therefore, University policy and employment practices will operate to prevent discrimination, affecting any employee or prospective employee, which is based on considerations of race, color, religion, sex, handicap, or national origin.

The principle of equal employment opportunity shall apply with respect to all incidents of the employment relationship, including (1) initial consideration of employment, (2) job placement and assignment of responsibilities, (3) evaluation of performance, (4) promotion and advancement, (5) compensation and fringe benefits, (6) access to training and other professional development opportunities, (7) formulation and application of personnel rules and regulations, (8) access to facilities, and (9) layoff, discipline and termination.

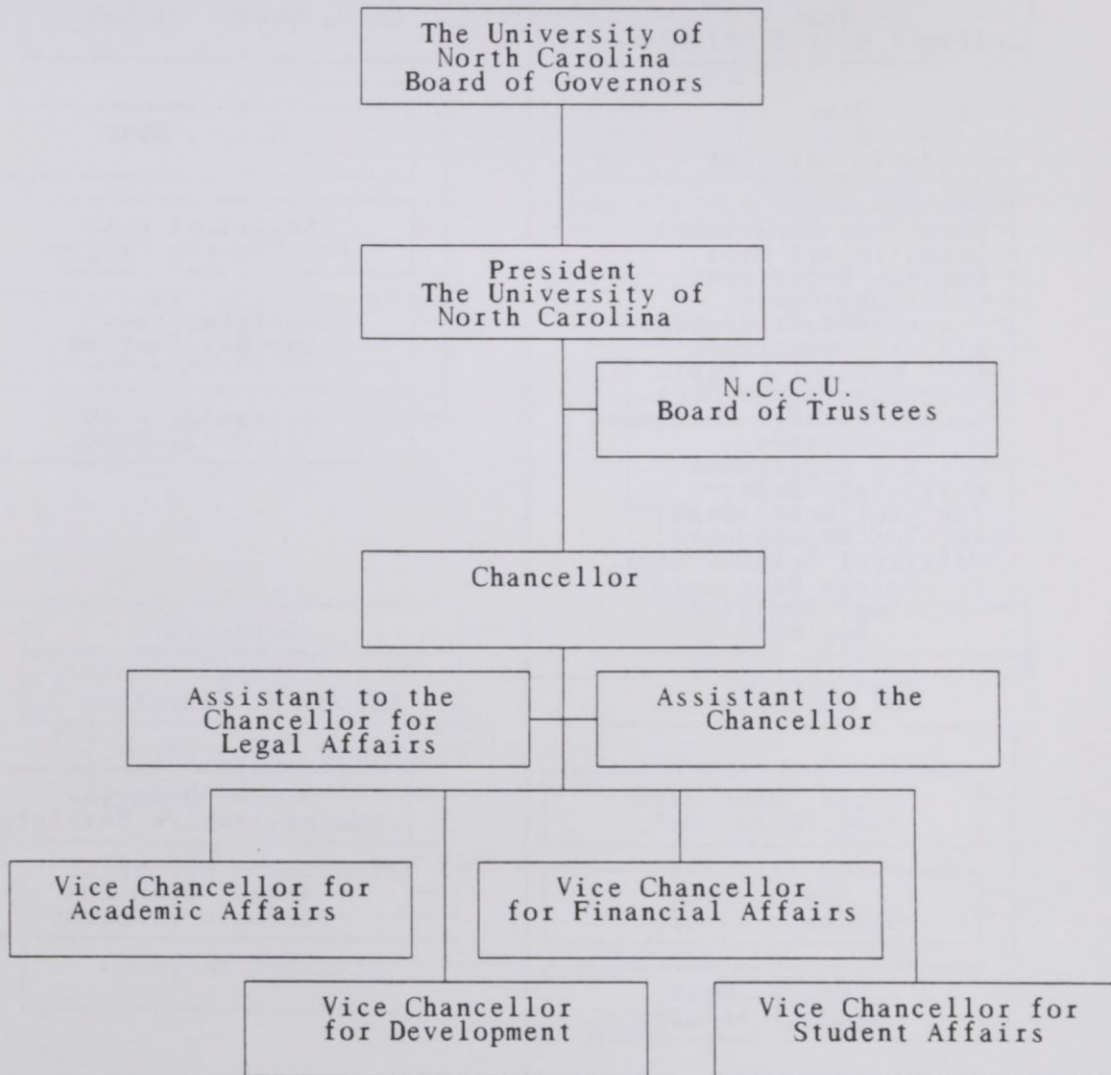
The personnel policies and practices of the University are monitored by the Affirmative Action Officer continuously to determine whether any individual or class has been or is being affected adversely, contrary to the principle of equal employment opportunity.

All employees of this University are expected to support the principle of and contribute to the realization of equal employment opportunity.

NORTH CAROLINA CENTRAL UNIVERSITY

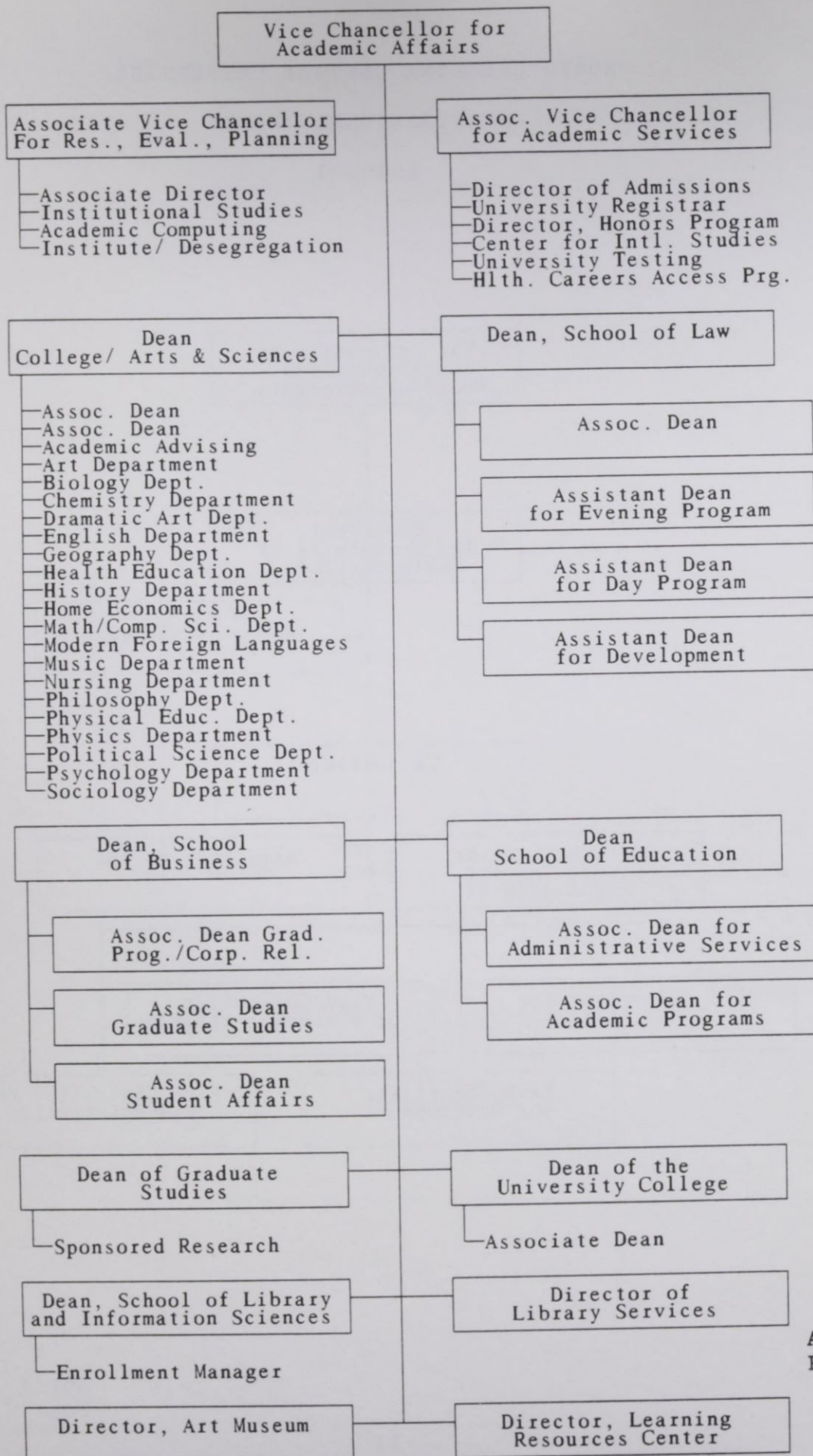
ORGANIZATIONAL CHARTS

1990-91

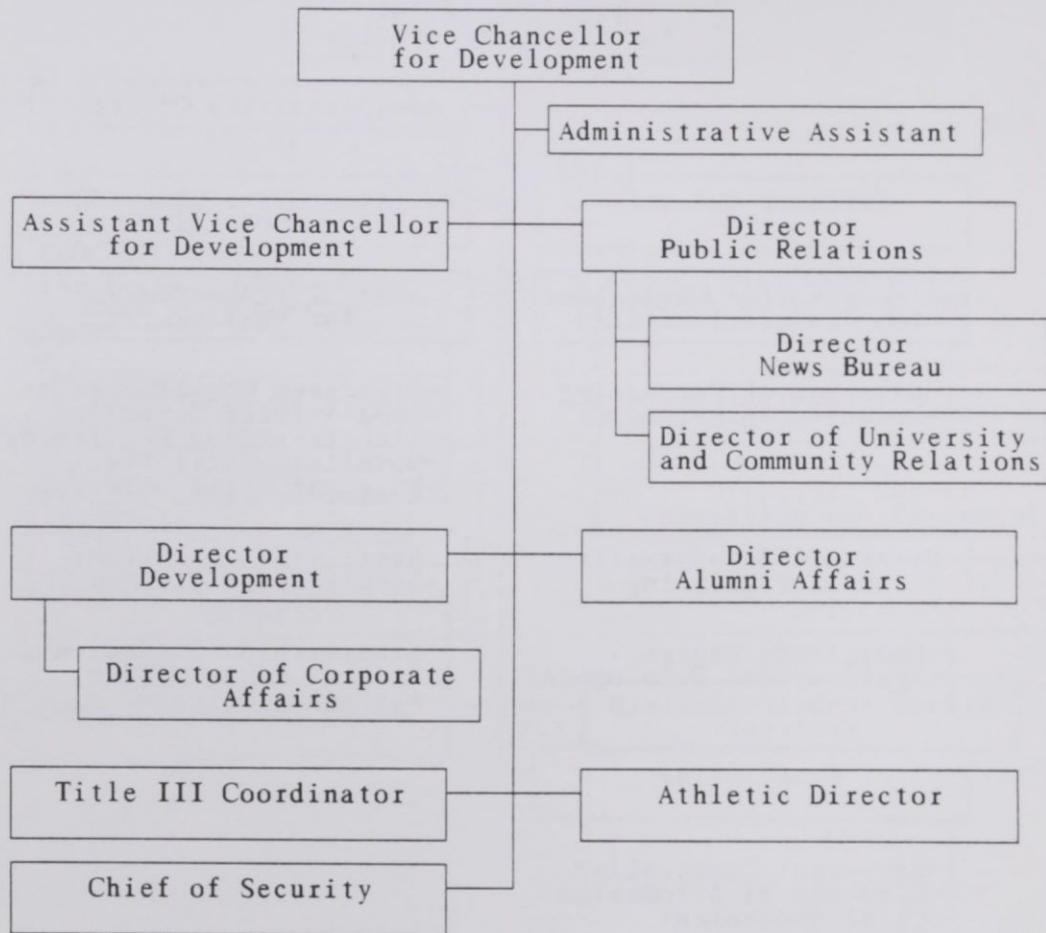


April 1, 1991
Page 1 of 5

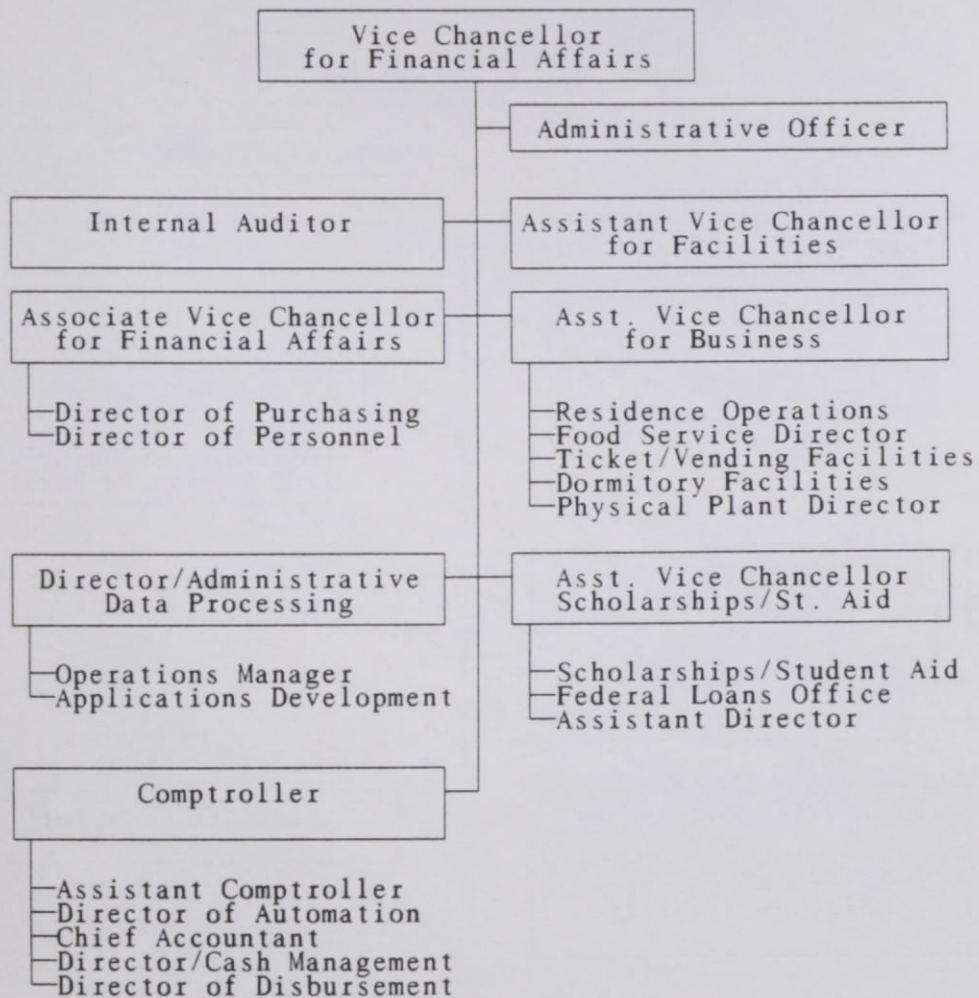
DIVISION OF ACADEMIC AFFAIRS



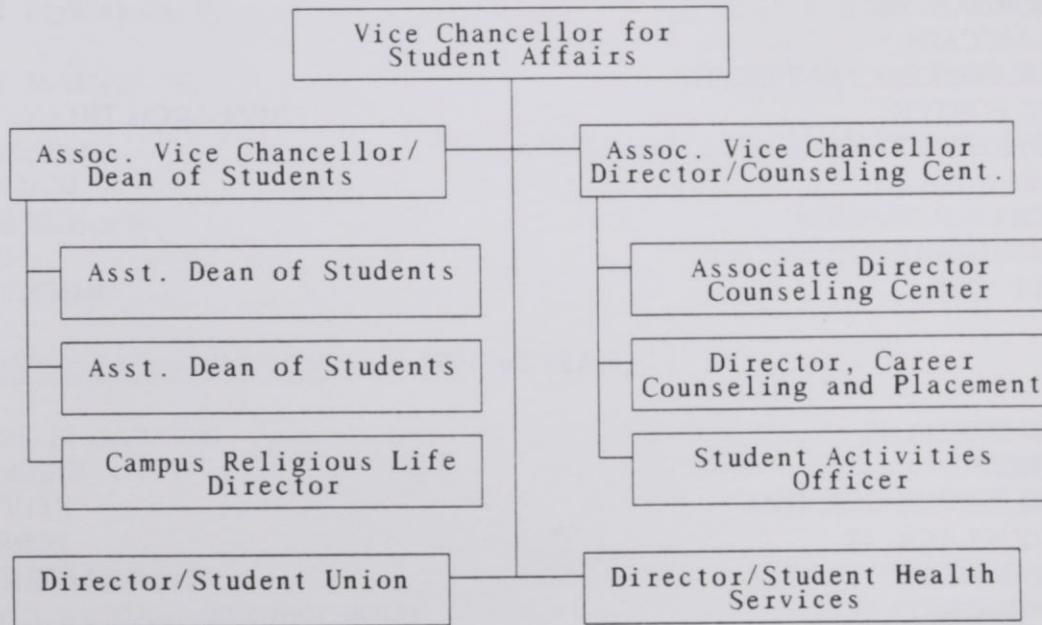
DIVISION OF DEVELOPMENT



DIVISION OF FINANCIAL AFFAIRS



DIVISION OF STUDENT AFFAIRS



THE UNIVERSITY OF NORTH CAROLINA
BOARD OF GOVERNORS

SAMUEL H. POOLE
W. TRAVIS PORTER
CHARLES Z. FLACK, JR.

CHAIRPERSON
VICE-CHAIRPERSON
SECRETARY

CLASS OF 1991

IRWIN BELK
WAYNE A. CORPENING
J. EARL DANIELEY
CHARLES D. EVANS
JAMES E. HOLSHOUSER, JR.
JOY J. JOHNSON
ROBERT L. JONES
JOHN R. JORDAN, JR.
BETTY R. MCCAIN
SAMUEL H. POOLE
W. TRAVIS PORTER
J. AARON PREVOST
LOUIS T. RANDOLPH
DR. PRISCILLA P. TAYLOR
JOSEPH E. THOMAS
GUS H. TULLOSS

CHARLOTTE
WINSTON-SALEM
ELON COLLEGE
NAGS HEAD
SOUTHERN PINES
FAIRMONT
RALEIGH
RALEIGH
WILSON
RALEIGH
RESEARCH TRIANGLE PARK
HAZELWOOD
WASHINGTON
GREENSBORO
NEW BERN
ROCKY MOUNT

CLASS OF 1993

RODERICK D. ADAMS
LOIS G. BRITT
WALTER R. DAVIS
CHARLES Z. FLACK, JR.
JOHN A. GARWOOD
R. PHILLIP HAIRE
WALLACE N. HYDE
REGINALD F. MCCOY
MARTHA F. MCNAIR
D. SAMUEL NEILL
ELLEN S. NEWBOLD
MAXINE H. O'KELLEY
MACEO A. SLOAN
ASA T. SPAULDING, JR.
HAROLD H. WEBB
RUTH DIAL WOODS

DURHAM
KENANSVILLE
KITTY HAWK
FOREST CITY
NORTH WILKESBORO
SYLVA
RALEIGH
LAURINBURG
WINSTON-SALEM
HENDERSONVILLE
ROSE HILL
BURLINGTON
DURHAM
DURHAM
RALEIGH
LUMBERTON

MEMBER EMERITI

PHILIP G. CARSON
WILLIAM A DEES, JR.
WILLIAM A. JOHNSON

ASHEVILLE
GOLDSBORO
LILLINGTON

THE UNIVERSITY OF NORTH CAROLINA
OFFICERS OF GENERAL ADMINISTRATION

1990-91

C. D. SPANGLER, JR. PRESIDENT

TRACEY C. AVINGER ADMINISTRATIVE ASSISTANT TO THE PRESIDENT

RICHARD H. ROBINSON, JR. ASSISTANT TO THE PRESIDENT
FOR LEGAL AFFAIRS

ELIZABETH C. BUNTING SPECIAL ASSISTANTS TO THE PRESIDENT
LEE CULPEPPER
DAVID N. EDWARDS, JR.

DAVID G. MARTIN, JR. SECRETARY OF THE UNIVERSITY

ALAN BOYETTE ASSISTANT SECRETARY OF THE UNIVERSITY

FRANCES H. HOPE ASSISTANT SECRETARY
OF THE BOARD OF GOVERNORS

ACADEMIC AFFAIRS DIVISION

RAYMOND H. DAWSON VICE PRESIDENT
FOR ACADEMIC AFFAIRS
AND SENIOR VICE PRESIDENT

DONNA BENSON ASSOCIATE VICE PRESIDENTS
RICHARD J. RICHARDSON (INTERIM) FOR ACADEMIC AFFAIRS
ROBERT W. WILLIAMS, JR.

MARY WAKEFORD ASSISTANT VICE PRESIDENT FOR ACADEMIC AFFAIRS

LOUIS T. PARKER, JR. ASSISTANT VICE PRESIDENT FOR ACADEMIC
AFFAIRS AND DIRECTOR, UNC EDUCATIONAL
COMPUTING SERVICE

EUGENE MCDOWELL DIRECTOR, ASHEVILLE GRADUATE CENTER

COMMUNICATIONS DIVISION

WYNDHAM ROBERTSON VICE PRESIDENT
FOR COMMUNICATIONS
JOHN W. DUNLOP DIRECTOR, THE UNIVERSITY OF N. C.
CENTER FOR PUBLIC TELEVISION

CHANCY KAPP

ASSOCIATE DIRECTOR FOR PROGRAMMING

JONI B. WORTHINGTON

DIRECTOR OF INFORMATION SERVICES

FINANCE DIVISION

L. FELIX JOYNER

VICE PRESIDENT
FOR FINANCE

HUGH BUCHANAN, JR.
KENNIS R. GROGAN
JAMES O. SMITH

ASSOCIATE VICE PRESIDENTS
FOR FINANCE ELLEN H. KEPLEY

LEON M. ENNIS, JR.
JAMES O. SMITH

ASSISTANT VICE PRESIDENTS
FOR FINANCE

JEFFREY R. DAVIES

ASSISTANT VICE PRESIDENT FOR FINANCE
AND SERVICE OFFICER

J. SIBLEY DORTON, JR.

ASSISTANT VICE PRESIDENT
FOR FINANCE AND TREASURER

HENRY A. HOLMES

ASSISTANT VICE PRESIDENT
FOR FINANCE AND UNIVERSITY
PROPERTY OFFICER

PLANNING DIVISION

JUDITH P. PULLEY (INTERIM)

VICE PRESIDENT FOR PLANNING

GARY T. BARNES
JOHN T. COREY

ASSOCIATE VICE PRESIDENTS
FOR PLANNING

E. BRUCE SIGMON, JR.

ASSISTANT VICE PRESIDENT
FOR PLANNING

ROBERT F. HILL, JR.

DIRECTOR OF INFORMATION SYSTEMS

LINDA BALFOUR

DIRECTOR OF DATA COLLECTION AND REPORTING

MARY ELLEN TAYLOR

COORDINATOR OF SPECIAL STUDIES

PUBLIC AFFAIRS DIVISION

JAY M. ROBINSON

VICE PRESIDENT FOR
PUBLIC AFFAIRS

RESEARCH DIVISION

JASPER D. MEMORY

VICE PRESIDENT
FOR RESEARCH

CHARLES L. WHEELER

ASSOCIATE VICE PRESIDENT FOR RESEARCH
AND DIRECTOR, NORTH CAROLINA STATE COMMISSION
ON HIGHER EDUCATION FACILITIES

RICHARD LINTON

ASSISTANT VICE
PRESIDENT FOR RESEARCH

B. J. CAMPBELL

ACTING DIRECTOR, INSTITUTE FOR
TRANSPORTATION RESEARCH AND EDUCATION

STUDENT SERVICES AND SPECIAL PROGRAMS DIVISION

NATHAN F. SIMMS, JR.

VICE PRESIDENT
FOR STUDENT SERVICES AND
SPECIAL PROGRAMS

GEORGE A. ANTONELLI
CYNTHIA P. BONNER

ASSOCIATE VICE PRESIDENTS FOR
STUDENT SERVICES AND
SPECIAL PROGRAMS

GERALD MCCANTS

DIRECTOR OF SPECIAL PROGRAMS

STAN C. BROADWAY

EXECUTIVE DIRECTOR, NORTH CAROLINA
STATE EDUCATION ASSISTANCE AUTHORITY

NORTH CAROLINA CENTRAL UNIVERSITY

BOARD OF TRUSTEES

BERNARD ALLEN (CHAIR)	RALEIGH
FRANKLIN R. ANDERSON	DURHAM
MARY ANNE AVERY	ROCKY MOUNT
BERT COLLINS	DURHAM
HELEN G. EDMONDS	DURHAM
PAUL WOODSON (EX-OFFICIO MEMBER)	DURHAM
TED N. GRIFFIN	DURHAM
HENRY C. HAYES	WARRENTON
EVELYN O. SHAW	FAYETTEVILLE
WILLIAM A. SHORE	RESEARCH TRIANGLE PARK
JOHN N. SMITH (VICE CHAIR)	DURHAM
CARL J. STEWART, JR.	GASTONIA
WALTER S. TUCKER (SECRETARY)	WINSTON-SALEM

NORTH CAROLINA CENTRAL UNIVERSITY

OFFICERS AND ADMINISTRATIVE STAFF

1990-1991

OFFICE OF THE CHANCELLOR

Tyronza R. Richmond, Ph.D.
Acie L. Ward, J.D.
Vacant

Chancellor
Legal Assistant
Assistant to the Chancellor

ACADEMIC AFFAIRS

Mickey L. Burnim, Ph.D.
Linda K. Pratt, Ph.D.
LaFayette W. Lipscomb, Ph.D.

Provost, Vice Chancellor
Associate Vice Chancellor
Associate Vice Chancellor

SCHOOL OF GRADUATE STUDIES

Mary M. Townes, Ph.D.
Rudolph S. Jackson, Ph.D.

Dean
Associate Dean
for Graduate Studies and Research

COLLEGE OF ARTS AND SCIENCES

Mary M. Townes, Ph.D.
Lana T. Henderson, Ph.D.
Mattie E. Moss, Ph.D.
Sarah Bell-Lucas, M.A.

Interim Dean
Associate Dean
Associate Dean
Academic Advising Coordinator

Academic Department Chairs

Melvin Carver, Ph.D (Acting)
Walter H. Pattillo, Ph.D.
James M. Schooler, Ph.D.
Linda K. Norfleet, Ph.D.
Arthrell D. Sanders, Ph.D. (Acting)
Woodrow W. Nichols, Jr., Ph.D.
Theodore R. Parrish, D.P.H.
Percy E. Murray, Ph.D.
Beverly A. Bryant, Ed.D.
William T. Fletcher, Ph.D.
Henri Armand, Ph.D.
Charles H. Gilchrist, Ph.D.
Marian F. Gooding, Ph.D.
Robert J. Clack, Ph.D.
Carey B. Hughley, Ph.D.
Angelaurelio F. Soldi, Ph.D.
Joseph Aicher, Ph.D.
Les Brinson, Ph.D.
George H. Conklin, Ph.D.

Art
Biology
Chemistry
Dramatic Arts
English
Geography
Health Education
History and Social Sciences
Home Economics
Mathematics/Computer Sciences
Modern Foreign Languages
Music
Nursing
Philosophy
Physical Education and Recreation
Physics
Political Science
Psychology
Sociology

SCHOOL OF BUSINESS

Sundar W. Fleming, Ph.D.
Raphael N. Thompson, M.B.A.

Youngil Cho, Ph.D.
John V. Turner, M.Ed.

Dean
Associate Dean for Graduate
Programs and Corporate Relations
Associate Dean for Graduate Studies
Associate Dean for Student Affairs

SCHOOL OF EDUCATION

Walter Brown, Ph.D.
Charles L. Alcorn, P.h.D.
Carolyn R. Whitted, Ph.D.

Interim Dean
Associate Dean
Associate Dean

SCHOOL OF LAW

Mary E. Wright, J.D.
Irving L. Joyner, J.D.
Frances Solari, J.D.
Janice L. Mills, J.D.
Patricia H. Marschall, J.D.

Interim Dean
Associate Dean
Assistant Dean for Evening Program
Assistant Dean for Day Program
Assistant Dean for Development

SCHOOL OF LIBRARY AND INFORMATION SCIENCES

Benjamin F. Speller, Jr., Ph.D.
Duncan F. Smith, M.L.I.S.

Dean
Enrollment Manager

UNIVERSITY COLLEGE

Eugene A. Eaves, Ph.D.
Gloria Blue, M.B.A.

Interim Dean
Associate Dean

RESEARCH, EVALUATION AND PLANNING

Linda K. Pratt, Ph.D.
Brenda H. Rogers, Ph.D.
F. Myron Dunston, M.A.
Beverly W. Jones, Ph.D.
Robert D. Montgomery, M.A.

Associate Vice Chancellor
Associate Director
Director, Institutional Studies
Director, Institute on Desegregation
Director, Academic Computing

ACADEMIC SERVICES

LaFayette W. Lipscomb, Ph.D.
Nancy R. Rowland, M.A.
James W. Pierce, M.A.
Vacant
Mildred Mundine
Lula G. Thorpe, B. A.
Eugene A. Eaves, Ph.D.

Associate Vice Chancellor
Director of Admissions
University Registrar
Associate Registrar
Assistant Registrar
Regional Director, Health Careers
Director, Honors Program
and Director, Center for International Studies
Director, University Testing

Sherry M. Cole-Eaton, Ph.D.

ART MUSEUM

Norman E. Pendergraft, M.A.C.T. Director

LEARNING RESOURCES

Marvin E. Duncan, Ph.D. Director

LIBRARY SERVICES

Floyd C. Hardy, Ph.D. Director

DEVELOPMENT

Robert S. Poole, B.A.	Vice Chancellor
Phyllis Joyner-Sims, M.P.H.	Associate Vice Chancellor for Development
Melvin L. Riggs, M.S.	Title III Coordinator
Alex M. Rivera, B.A.	Director of Public Relations
William E. Evans, B.S.	Director of University and Community Relations
David H. Witherspoon, B.A.	Director of News Bureau
E. Theresa Taylor, B.A.	Director of Development
Renee Wright, B.A.	Director of Corporate Affairs
Ellis H. Smith, M.A.	Director of Alumni Affairs
Yvonne Fisher, B.S.	Foundation Accountant

ATHLETICS

Christopher Fisher, M.A. Athletic Director

SECURITY

John W. Smith, M.A. (Retired Jan. 1,1991)	Chief of Security
Vacant	Chief of Security

FINANCIAL AFFAIRS

Herbert N. Watkins, Ph.D., C.P.A.	Vice Chancellor
Mozell Robinson, B.A.	Administrative Officer for Financial Affairs
Christopher L. Hinton, B.S., C.P.A.	Internal Auditor
Vacant	Assistant Vice Chancellor for Facilities
Ruby Pittman, M.B.A.	Associate Vice Chancellor for Financial Affairs
Joyce Page-Ramsey, M.A.	Director of Purchasing
Shirley B. Ragland, M.A.	Purchasing Manager
Mavis B. Lewis, B.S.	Director of Personnel
Ronald D. Reaves, B.S.	Position and Staffing Manager
Larry Bowens, J.D.	Employee Services Manager
Robert Adams, B.A.	Safety and Health Administrator

Robert Adams, B.A.
 Duncan J. Floyd, B.S.
 Donald R. Nolen, M.P.H.
 Paul Harrison, B.S.
 Lola T. McKnight, B.S.
 Max Matthews, J.D.
 Lillian B. Downey, B.S.
 Lisa B. Mitchell, B.S.
 Avis T. Bent, M.B.A., C.P.A.
 Nathaniel Hall, B.S.
 Ralph Fennell, B.S.C.
 William K. James, M.B.A., C.P.A.
 Norma P. Smith, B.A.
 Lucille Streeter, B.S.
 Robert P. Smith, B.S.
 Boyd S. Taylor, M.S.
 Reginald K. Smith, M.P.A.
 Malcolm Mangum, B.S.
 Shirley Green, M.A.
 Phyllis F. Shumate, M.S.
 William E. McDonald, B.S.E.E.
 Lebbie E. Bumpass
 Hardy White, A.S.
 Vacant

Safety and Health Administrator
 for Facilities
 Director of Administrative
 Data Processing
 Application Development Manager
 Operations Manager
 Assistant Vice Chancellor
 for Scholarships and Student Aid
 Scholarships and Student Aid Manager
 Assistant Director for
 Scholarships and Student Aid
 Supervisor, Federal Loans Officer
 (Acting) Comptroller
 Assistant Comptroller
 Director of Automation
 Chief Accountant
 Director of Disbursement
 Director of Cash Management
 Assistant Vice Chancellor for Business
 Food Services Director
 Ticket Office/Vending and
 Facilities Manager
 Dormitory Facilities Coordinator
 Director of Residence Operations
 Dormitory Programs Director
 Physical Plant Director
 Building Maintenance Supervisor
 Housekeeping Administrator
 Ground Supervisor

STUDENT AFFAIRS

Roland L. Buchanan, Ph.D.
 Roger G. Bryant, Ed.D.
 Evelyn C. Deck, M.A.
 Milton L. Lewis, J.D.
 Sheree Cook
 Glen R. Martin, Ed.D.
 Joseph P. Dempsey, D.Min.
 Peggy Watson-Borden, M.A.
 Curtis Daye, M.A.
 Thurman Prescott, Jr., B.A.
 Lillian R. Home, M.D.

Vice Chancellor
 Associate Vice Chancellor
 and Dean of Students
 Assistant Dean of Students
 Assistant Dean of Students
 Interim Director of Campus Religious Life
 Associate Vice Chancellor
 and Director of Counseling Center
 Associate Director of Counseling
 Center
 Director of Career Counseling
 and Placement Center
 Student Activities Officer
 Director of Student Union
 Director of Student Health
 Services

FACULTY SENATE

Walter H. Pattillo, Ph.D.

Chair

TABLE 1

CHARACTERISTICS OF NCCU FACILITIES

INSTRUCTIONAL FACILITIES

YEAR COMPLETED	NAME	ASSIGNABLE SQUARE FT.	CLASS ROOMS	CLASS LABS	OTHER LABS
1930	Alexander Dunn	12,697	5		0
1937	Duke Auditorium	10,566			1
1937	William Jones Law Bldg.	12,445			
1937	Robinson Science	16,445	10	6	3
1940	Women's Gym	13,421			
1950	Classroom Building	14,657	11		4
1950	McDougald Gym	35,934	4		
1950	Fine Arts Bldg.	14,736	3	12	
1950	Shepard Library	39,303	4		
1952	Dent Home Economics	13,064	6	4	4
1953	Home Econ. Practice House	2,870			
1955	Taylor Education Bldg.	25,348	13	1	3
1956	Lee Biology Building	20,834	5	8	29
1956	Willis Commerce Bldg.	25,105	8	7	
1957	Biology Greenhouse	440		1	
1969	Bowling Alley	5,358			
1969	1910 Fayetteville St.	454			1
1969	Hubbard Chemistry	19,082	4	10	9
1976	Farrison-Newton Com. Bldg.	51,898	28	4	4
1976	Edwards Music Bldg.	14,984	4	2	13
1976	Shepard Library Addition	37,004			
1980	Turner Law School	50,841	7		1
1982	Health Science Bldg.	28,784	12	3	5
1984	Criminal Justice Bldg.	17,837	12	0	3
1985	Walker P. E. Complex	102,013	11	4	1
TOTAL INSTRUCTIONAL FACILITIES		586,120	147	62	81

TABLE 1
(continued)

CHARACTERISTICS OF NCCU FACILITIES

ADMINISTRATIVE/FACULTY/STUDENT SERVICE FACILITIES

YEAR COMPLETED	NAME	ASSIGNABLE SQUARE FT.	OFFICES
1925	Admissions Office	2,487	6
1929	Hoey Administration Building	19,643	84
1937	Cottage 1	2,028	8
1937	Jordan House	1,747	8
1937	Personnel Building	1,557	5
1937	ROTC 517 George St.	1,730	7
1945	Quick Copy Center	3,625	10
1950	Central Heating Plant	6,985	
1950	Old Health Building	15,253	2
1956	McDougald House-Admissions	3,410	8
1963	Black History Center 521 Nelson St.	1,134	3
1963	Honors Court 525 Nelson St.	813	4
1965	Storage Building	11,694	1
1966	Pearson Cafeteria	21,686	
1968	Elder Student Union	26,543	17
1977	Physical Plant/Security	7,996	12
1983	Cafeteria Annex	2,824	4
TOTAL ADMINISTRATIVE/FACULTY/ STUDENT SERVICES FACILITIES		131,155	179

TABLE 1
(continued)

CHARACTERISTICS OF NCCU FACILITIES

RESIDENTIAL FACILITIES

YEAR COMPLETED	NAME	ASSIGNABLE SQUARE FT.	OCCUPANCY	OFFICES
-------------------	------	--------------------------	-----------	---------

DORMITORIES

1930	Shepard (women)	28,742	152	2
1937	McLean (coed-honors)	16,668	74	2
1937	Rush (coed-honors)	17,187	84	
1939	Old Senior (women)	8,529	18	24
1951	Chidley (men)	77,282	642	7
1951	Graduate Apts.	10,750	25	
1960	Latham (women)	28,453	200	1
1966	Baynes (women)	52,314	400	1
1968	Eagleson (women)	55,517	400	1

TOTAL DORMITORY FACILITIES		295,442	1995	38
----------------------------	--	---------	------	----

OTHER RESIDENTIAL FACILITIES

1960	707 Burlington Ave.	850		
1960	709 Burlington Ave.	850		
1963	523 Nelson Street	850		
1969	1908 Fayetteville St.	1,649		
1974	Chancellor's Residence	3,293		

TOTAL OTHER RESIDENTIAL FACILITIES		7,492		
------------------------------------	--	-------	--	--

GRAND TOTAL: ALL FACILITIES		1,013,076		
-----------------------------	--	-----------	--	--

SOURCE: North Carolina Facilities Inventory and Space Utilization Report,
Fall 1989

TABLE 2
REVENUES AND EXPENDITURES FOR
FISCAL YEAR, 1989-90

DESCRIPTION OF FINANCIAL STATISTICS	AMOUNT (IN DOLLARS)
CURRENT FUNDS REVENUES BY SOURCES	
Tuition & Fees	\$6,150,751
State	24,844,553
Government Grants & Contracts:	
Federal, Unrestricted	308,688
Federal, Restricted	6,067,377
State, Unrestricted	(4,982)
State, Restricted	252,093
Local, Unrestricted	
Local, Restricted	
Private Gifts, Grants & Contracts:	
Unrestricted	199,608
Restricted	850,800
Endowment Income:	
Unrestricted	53,902
Restricted	9,915
Sales & Services of Educational Activities	
Sales & Services of Auxiliary Enterprises	9,248,057
Other Sources	361,028
Independent Operations	
TOTAL CURRENT FUNDS REVENUES	\$48,341,790
CURRENT FUNDS EXPENDITURES & MANDATORY TRANSFERS	
Instruction	\$16,258,522
Research	670,691
Public Service	309,758
Academic Support (Including Libraries)	6,030,801
Student Services	2,441,429
Institutional Administration	5,263,258
Operation & Maintenance of Plant	3,852,133
Scholarships & Fellowships	
Awards from Unrestricted Funds	337,540
Awards from Restricted Funds	4,635,823
Mandatory Transfers (Unrestricted)	320
Auxiliary Enterprises (Including Mandatory Transfers)	7,054,614
Independent Operations (Including Mandatory Transfers)	
TOTAL CURRENT FUNDS EXPENDITURES & MANDATORY TRANSFERS	\$46,854,889

SOURCE: IPEDS F-1 Current Funds Expenditures and Transfers for Fiscal Year 1989-1990

FIGURE 1

EXPENDITURES BY BUDGET AREA TEN-YEAR COMPARISON

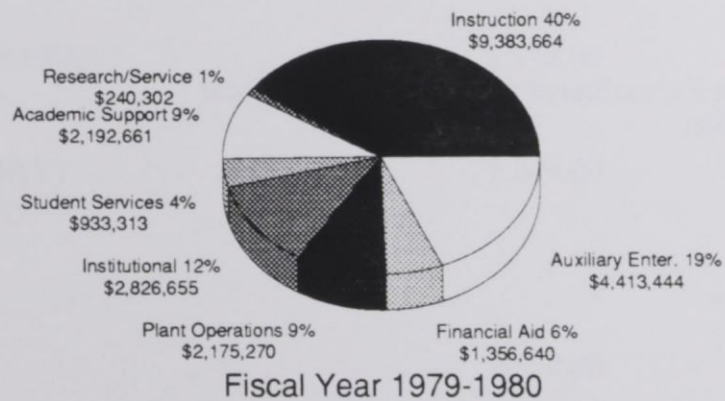
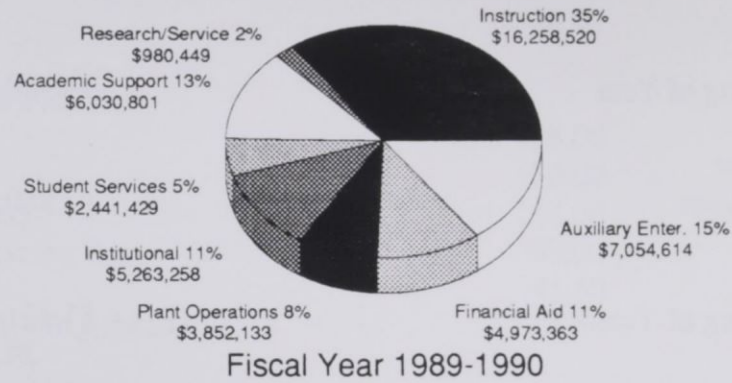


TABLE 3

PHYSICAL PLANT ASSETS FOR FISCAL YEAR, 1989-90

DESCRIPTION OF ASSETS	AMOUNT (IN DOLLARS)
PHYSICAL PLANT ASSETS	
LAND:	
Book Value at Beginning of Year	\$980,091
Additions During Year	
Deductions During Year	
Book Value at End of Year	980,091
BUILDINGS:	
Book Value at Beginning of Year	51,131,308
Additions During Year	34,710
Deductions During Year	
Book Value at End of Year	51,166,018
EQUIPMENT	
Book Value at Beginning of Year	9,554,693
Additions During Year	1,946,465
Deductions During Year	160,034
Book Value at End of Year	11,341,124
TOTAL PHYSICAL PLANT ASSETS (BOOK VALUE)	\$63,487,233

IPEDS F-1 Current Funds Expenditures and Transfers for Fiscal
Year 1989-1990

TABLE 4
STUDENT TUITION, FEES, AND CHARGES
FOR THE 1990-91 ACADEMIC YEAR

CATEGORY	IN-STATE	OUT-OF-STATE
	<u>UNDERGRADUATE</u>	
TUITION	\$520.00	\$5,010.00
OTHER REQUIRED FEES		
Athletic Fee	128.00	128.00
Health Services Fee	130.00	130.00
Debt Services Fee (s)	137.00	137.00
General Student Activity Fee	98.00	98.00
Academic Fee	41.50	83.00
TOTAL TUITION & REQUIRED FEES	1,054.50	5,586.00
DORMITORY ROOM RENT	1,518.00	1,518.00
BOARD PLAN (7-DAY)	1,246.00	1,246.00
		<u>GRADUATE</u>
TUITION	\$520.00	\$5,010.00
OTHER REQUIRED FEES	460.00 *	460.00 *
TOTAL TUITION & REQUIRED FEES	980.00	5,470.00
DORMITORY ROOM RENT (Double Occupancy)	1,518.00	1,518.00
BOARD PLAN (7-DAY) (20 Meals per week)	1,246.00	1,246.00
		<u>LAW</u>
TUITION	\$520.00	6,152.00
OTHER REQUIRED FEES	457.00 *	457.00 *

*Plus Academic Fees: In-State=\$41.50/Out-of-State=\$83.00

SOURCE: NCHED A-3 Student Tuition, Fees, and Charges for 1990-91 Report

TABLE 5

LIBRARY STAFF, COLLECTIONS, AND EXPENDITURES, FISCAL YEAR 1990

LIBRARY STAFF FTE	
Librarians	25.0
All Other Paid Staff	22.0
Student Assistants From All Funding Sources	6.3
Total FTE Staff	53.3
OPERATING EXPENDITURES	
Salaries and Wages	\$759,263.00
All Other Paid Staff	440,760.00
Student Assistants	42,921.00
Collections	
Print Materials	184,172.00
Current Serial Subscriptions	532,035.00
Microforms	29,046.00
Machine Readable Materials	2,975.00
Audiovisual Materials	7,663.00
Other	0.00
Preservation	4,313.00
Equipment	
Furniture and Equipment	10,171.00
Computer Hardware	8,445.00
Other Operating Expenditures	72,127.00
Total Operating Expenditures	\$2,093,891.00
COLLECTIONS	
Book Serials and Government Documents	
Number of Volumes	584,856
Number of Titles	433,458
Number of Government Document Titles	112,127
Current Serial Subscriptions	
Number of Titles	3,930
Microforms	
Number of Book Titles	4,889
Number of Serial Titles	435
Number of Government Document Titles	68,623
Total Number of Physical Units of all Types of Microforms	553,800
Manuscripts and Archives (in Linear Feet)	80
Cartographic Materials (Number of Units)	2,786
Graphic Materials (Number of Titles)	3,766
Audio Materials (Number of Titles)	1,662
Films (Number of Titles)	254
Video Materials (Number of Titles)	305
Machine Readable Materials (Number of Titles)	581
Other Library Materials (Number of Titles)	23

SOURCE: IPEDS Libraries Report, Fiscal Year 1990-91

FACTS TO SUPPORT PLANNING

LIST OF TABLES AND FIGURES

Table 6:	Degree Programs and Program Tracks	35
Table 7:	Credit Hours Generated by Department for Academic Years 1986-87 Through 1989-90	39
Table 8:	Grades Assigned by School (Distribution of Percentages)	41
Table 9:	College of Arts and Sciences Profile	42
Table 10:	School of Business Profile	43
Table 11:	School of Education Profile	44
Table 12:	School of Law Profile	45
Table 13:	School of Library and Information Sciences Profile	46
Table 14:	Students Enrolled, Graduated, Suspended, and Not Enrolled One Year After Initial Entry (Percentages)	47
Table 15:	Graduation Percentages for First-Time Freshmen, 1977-1986	48
Table 16:	A Comparison of First-Time Freshmen Enrolled or Graduated at NCCU, Traditionally Black Institutions (TBI), and in The UNC System (Percentages)	49
Table 17:	Comparison of Faculty Salaries by Rank for NCCU and Comparable Public Universities, 1990-91	50

TABLE 6
DEGREE PROGRAMS AND PROGRAM TRACKS

North Carolina Central University is authorized to offer degree programs in 16 discipline divisions at the baccalaureate, master's and professional levels. The program and program tracks under each of these divisions with program titles, degrees, and tracks are as follows:

API CODE	DIVISION AND PROGRAM TITLE	DEGREE LEVEL*	DEGREE	PROGRAM TRACK
<u>BIOLOGICAL SCIENCE</u>				
0401	Biology, General	B	B.S.	Biology
		B	B.S.	Biology, Secondary Education
		M	M.S.	Biology
		M	M.S.	Biology, Secondary Education
<u>BUSINESS AND MANAGEMENT</u>				
0502	Accounting	B	B.B.A.	Accounting
0506	Business Management and Administration	B	B.B.A.	Business Administration
		B	B.B.A.	Banking and Finance
		B	B.B.A.	Computer Information Systems
		B	B.B.A.	Management
		B	B.B.A.	Marketing
		M	M.B.A.	Business Administration
0517	Business Economics	B	B.B.A.	Economics
		B	B.A.	Economics
<u>COMPUTER & INFORMATION SCIENCE</u>				
0701	Computer & Information Science	B	B.S.	Computer Science
0702	Information Sciences & Systems	M	M.I.S.	Information Sciences
<u>EDUCATION</u>				
0802	Elementary Education, General	B	B.A.	Elementary Ed., Intermediate (4-6)
		B	B.A.	Early Childhood Education (K-4)
		M	M.A.	Elementary Ed. (Early Childhood and Intermediate)
		M	M.Ed.	Elementary Ed. (Early Childhood and Intermediate)
0804	Junior High School Education	B	B.A.	Middle Grades Education
		M	M.A.	Middle Grades Education
		M	M.Ed.	Middle Grades Education
0808	Special Education, General	M	M.Ed.	Education of Mentally Retarded
		M	M.Ed.	Education of the Emotionally Disturbed
0815	Speech Correction	M	M.Ed.	Speech and Hearing Education

*Level: B=Bachelor's M=Master's P=Professional

DEGREE PROGRAMS AND PROGRAM TRACKS (CONTINUED)

API CODE	DIVISION AND PROGRAM TITLE	DEGREE LEVEL*	DEGREE	PROGRAM TRACK
0826	<u>EDUCATION (Continued)</u> Student Personnel	M	M.A.	Student Personnel (Counseling and Guidance)
		M	M.A.	Career Counseling and Placement
		M	M.A.	Agency Counseling
0835	Physical Education	B	B.S.	Physical Education
		M	M.S.	Physical Education
		M	M.S.	Special Physical Education
0837	Health Education	M	M.S.	Physical Education, Secondary Education
		B	B.S.	Health Education
		B	B.S.	Community Health Education
0838	Business, Commerce & Distributive Education	B	B.S.C.	Business Education, Secondary Basic
		B	B.S.C.	Business Education, Secondary, Comprehensive
		M	M.S.	Business Education, Secondary
0893	Educational Administration & Supervision	M	M.A.	Educational Administration Supervision
0897	Educational Media	M	M.A.	Instructional Media
1002	<u>FINE AND APPLIED ARTS</u> Art	B	B.A.	Art, General
		B	B.A.	Visual Communications
		B	B.A.	Art, Fine Arts
		B	B.A.	Art, Art Education
1004	Music	B	B.M.	Jazz
		B	B.M.	Sacred Music
1005	Music	B	B.A.	Music (Liberal Arts Program)
		B	B.A.	Music, Music Education
		M	M.A.	Music (Liberal Arts Program)
1007	Dramatic Arts	M	M.A.	Music Education, K-12
		B	B.A.	Dramatic Arts
		B	B.A.	Dramatic Arts, Secondary Education
1102	<u>FOREIGN LANGUAGES</u> French	B	B.A.	Theatre Arts Education, K-12
		B	B.A.	French
		B	B.A.	French, Secondary Education
1105	Spanish	M	M.A.	French
		M	M.A.	French, Secondary Education
1105	Spanish	B	B.A.	Spanish
		B	B.A.	Spanish, Secondary Education

DEGREE PROGRAMS AND PROGRAM TRACKS (CONTINUED)

API CODE	DIVISION AND PROGRAM TITLE	DEGREE LEVEL*	DEGREE	PROGRAM TRACK
<u>HEALTH PROFESSIONS</u>				
1203	Nursing	B	B.S.N.	Nursing
<u>HOME ECONOMICS</u>				
1301	Home Economics, General	B	B.S.H.E.	Home Economics, General
		B	B.S.H.E.	Home Economics, Secondary Education
1303	Clothing and Textiles	M	M.S.	Home Economics Education
		B	B.S.H.E.	Clothing and Textiles
1306	Foods and Nutrition	B	B.S.H.E.	Foods and Nutrition (including Dietetics)
<u>LAW</u>				
1401	Law, General	P	L.L.B.	Law
		P	J.D.	Law
<u>LETTERS</u>				
1501	English, General	B	B.A.	English
		B	B.A.	English, Secondary Education
1509	Philosophy	M	M.A.	English
		M	M.A.	English, Secondary Education
1601	Library Science, General	B	B.A.	Philosophy
<u>LIBRARY SCIENCE</u>				
1601	Library Science, General	M	M.L.S.	Library Science
<u>MATHEMATICS</u>				
1701	Mathematics, General	B	B.S.	Mathematics
		B	B.S.	Mathematics, Secondary Education
		B	B.S.	Actuarial Science
1902	Physics, General	M	M.S.	Mathematics
		M	M.S.	Mathematics, Secondary Education
<u>PHYSICAL SCIENCES</u>				
1902	Physics, General	B	B.S.	Physics
		B	B.S.	Physics, Secondary Education
1905	Chemistry, General	B	B.S.	Chemistry
		B	B.S.	Chemistry, Secondary Education
2001	Psychology, General	M	M.S.	Chemistry
		M	M.S.	Chemistry, Secondary Education
<u>PSYCHOLOGY</u>				
2001	Psychology, General	B	B.A.	Psychology
		M	M.A.	Psychology

DEGREE PROGRAMS AND PROGRAM TRACKS (CONTINUED)

API CODE	DIVISION AND PROGRAM TITLE	DEGREE LEVEL*	DEGREE	PROGRAM TRACK
	<u>PUBLIC AFFAIRS AND SERVICES</u>			
2102	Public Administration	M	M.P.A.	Public Administration
2103	Parks and Recreation Management	B	B.S.	Recreation Administration
		M	M.S.	Recreation Administration
2105	Law Enforcement and Corrections	B	B.A.	Political Sciences: Criminal Justice
		M	M.S.	Criminal Justice
	<u>SOCIAL SCIENCES</u>			
2201	Social Sciences, General	B	B.A.	Social Sciences
2205	History	B	B.A.	History
		B	B.A.	History, Secondary Education
		M	M.A.	History
		M	M.A.	History, Secondary Education
2206	Geography	B	B.S.	Geography
2207	Political Science and Government	B	B.A.	Political Science
2208	Sociology	B	B.A.	Sociology
		M	M.A.	Sociology

Source: Academic Program Inventory, The University of North Carolina,
dated June 25, 1990.

TABLE 7

CREDIT HOURS GENERATED BY DEPARTMENT FOR
ACADEMIC YEARS 1986-1987 THROUGH 1989-1990

UNDERGRADUATE LEVEL

	YEAR							
	1986-1987		1987-1988		1988-1989		1989-1990	
	HOURS SUM	%	HOURS SUM	%	HOURS SUM	%	HOURS SUM	%
COLLEGE OF ARTS & SCIENCES								
Art	2,731	2.7	2,618	2.7	2,865	2.8	2,413	2.2
Biology	6,263	6.2	5,888	6.0	6,124	6.0	7,071	6.4
Chemistry	2,184	2.2	2,146	2.2	2,156	2.1	2,337	2.1
Dramatic Arts	1,999	2.0	1,964	2.0	1,830	1.8	1,883	1.7
English	12,543	12.4	12,657	13.0	13,371	13.1	15,228	13.8
Geography	2,162	2.1	2,431	2.5	2,451	2.4	2,352	2.1
Health Education	3,548	3.5	3,078	3.2	3,581	3.5	4,288	3.9
History & Social Science	6,816	6.8	7,320	7.5	7,968	7.8	9,165	8.3
Home Economics	2,089	2.1	1,950	2.0	1,750	1.7	2,081	1.9
Law Enforcement & Corrections*							3,078	2.8
Mathematics & Computer Sciences	11,907	11.8	11,179	11.5	11,908	11.7	13,217	12.0
Modern Foreign Languages	5,250	5.2	4,446	4.6	5,322	5.2	5,892	5.3
Music	3,159	3.1	3,222	3.3	3,169	3.1	3,132	2.8
Nursing	2,284	2.3	2,026	2.1	1,215	1.2	966	0.9
Orientation	1,072	1.1	839	0.9	766	0.8	943	0.9
Philosophy	568	0.6	663	0.7	921	0.9	978	0.9
Physical Ed. & Recreation	4,246	4.2	3,745	3.8	3,690	3.6	3,995	3.6
Physics	1,042	1.0	863	0.9	991	1.0	1,010	0.9
Political Science	10,364	10.3	10,284	10.5	9,945	9.8	7,242	6.6
Psychology	2,734	2.7	2,881	3.0	3,256	3.2	2,519	2.3
ROTC	418	0.4	262	0.3	246	0.2	263	0.2
Sociology	4,297	4.3	4,134	4.2	4,329	4.2	3,967	3.6
Subtotal	87,676	87.0	84,596	86.9	87,854	86.2	94,020	85.2
SCHOOL OF BUSINESS								
Business	9,799	9.7	9,214	9.4	10,486	10.3	12,001	10.9
SCHOOL OF EDUCATION								
Education**	3,393	3.4	3,729	3.8	3,566	3.5	4,290	3.9
TOTAL	100,868	100	97,539	100	101,906	100	110,311	100

*Prior to 1989, credit hours were reported in the department of Political Science

**Became School of Education in 1989.

SOURCE: Fall and Spring Credit Hours Tapes, Student Information System

TABLE 7 (Continued)

CREDIT HOURS GENERATED BY DEPARTMENT FOR
ACADEMIC YEARS 1986-1987 THROUGH 1989-1990

GRADUATE AND PROFESSIONAL LEVELS

	YEAR							
	1986-1987		1987-1988		1988-1989		1989-1990	
	HOURS SUM	%	HOURS SUM	%	HOURS SUM	%	HOURS SUM	%
COLLEGE OF ARTS & SCIENCES								
Biology	198	1.3	167	1.2	129	0.9	100	0.6
Chemistry	176	1.1	106	0.8	70	0.5	54	0.3
English	168	1.1	126	0.9	117	0.8	159	1.0
History/Social Sciences	234	1.5	123	0.9	168	1.2	144	0.9
Home Economics	165	1.1	144	1.0	111	0.8	102	0.7
Mathematics & Computer Science	159	1.0	147	1.0	105	0.7	51	0.3
Modern Foreign Languages	47	0.3	12	0.1	3	0.0	---	---
Music	42	0.3	9	0.1	30	0.2	21	0.1
Physical Education & Recreation	180	1.2	120	0.8	168	1.2	153	1.0
Public Administration	1,115	7.2	1,192	8.4	1,185	8.2	765	4.9
Law Enforcement & Corrections*							246	1.6
Psychology	471	3.0	366	2.6	420	2.9	504	3.2
Sociology	231	1.5	237	1.7	129	0.9	147	0.9
Subtotal	3,186	20.5	2,749	19.5	2,635	18.2	2,446	15.7
PROFESSIONAL SCHOOLS								
Business	687	4.4	177	1.3	261	1.8	285	1.8
Education**	3,344	21.5	3,561	25.2	3,945	27.3	3,978	25.5
Law	7,011	45.2	6,440	45.6	6,248	43.2	7,746	49.7
Library & Information Sciences	1,292	8.3	1,203	8.5	1,383	9.6	1,140	7.3
TOTAL	15,520	100	14,130	100	14,472	100	15,595	100

*Prior to 1989, credit hours were reported in the department of Public Administration.

**Became School of Education in 1989

SOURCE: Fall and Spring Credit Hours Tapes, Student Information System

Table 8
Grades Assigned by School
(Distribution of Percentages)

FALL 1989	A	B	C	D	F	TOTAL
Arts & Sciences	25.0	27.8	26.5	10.7	9.9	14763
Lower	23.3	26.2	27.7	11.8	11.0	11755
Upper	27.5	35.0	23.9	7.4	6.3	2651
Grad.	65.3	27.5	6.2	0.0	1.1	357
Business	14.6	29.0	35.3	10.9	10.2	1801
Lower	10.6	22.9	35.5	14.4	16.7	654
Upper	16.1	32.0	36.0	9.3	6.6	1104
Grad.	34.9	46.5	16.3	0.0	2.3	43
Education	46.6	35.6	13.1	2.6	2.1	1158
Lower	13.9	29.6	44.4	8.3	3.7	108
Upper	35.9	33.4	21.0	5.2	4.5	401
Grad.	58.7	37.9	3.1	0.0	0.3	649
Law	15.7	48.7	32.1	3.2	0.4	817
Library Science	58.7	38.1	3.2	0.0	0.0	155
Upper	65.6	34.4	0.0	0.0	0.0	64
Grad.	53.9	40.7	5.5	0.0	0.0	91
SPRING 1990	A	B	C	D	F	TOTAL
Arts & Sciences	24.7	27.0	27.6	11.4	9.3	14693
Lower	23.0	24.9	28.9	12.5	10.7	11174
Upper	26.2	33.7	25.6	8.8	5.6	3088
Grad.	57.8	33.4	8.1	0.0	0.7	431
Business	11.0	26.9	41.6	12.6	7.9	1907
Lower	8.9	20.3	38.5	18.2	14.2	632
Upper	10.7	29.6	44.7	10.2	4.9	1231
Grad.	47.7	47.7	2.3	0.0	2.3	44
Education	48.2	34.1	13.6	3.2	0.9	1163
Lower	19.6	39.1	37.0	2.2	2.2	46
Upper	43.6	29.9	19.3	5.8	1.4	626
Grad.	56.8	39.1	4.1	0.0	0.0	491
Law	20.2	47.4	28.0	3.9	0.5	382
Library Science	64.2	34.0	1.9	0.0	0.0	162
Upper	64.2	32.1	3.8	0.0	0.0	53
Grad.	64.2	34.9	0.9	0.0	0.0	109

SOURCE: Fall and Spring Grade Tapes, Student Information System

TABLE 9

COLLEGE OF ARTS AND SCIENCES PROFILE*

APPLICATIONS AND ENROLLMENT: NEW DEGREE-SEEKING STUDENTS												
	NEW FRESHMEN			NEW TRANSFERS			NEW GRADUATE					
	1988	1989	1990	1988	1989	1990	1988	1989	1990			
Applied	1842	2139	2178	430	430	553	186	122	87			
Accepted	1285	1764	1491	348	402	511	157	114	78			
Enrolled	685	958	764	199	227	254	157	74	61			
FALL ENROLLMENT FOR DEGREE-SEEKING STUDENTS												
	UNDERGRADUATE			GRADUATE			TOTAL					
	1988	1989	1990	1988	1989	1990	1988	1989	1990			
Black	3,226	3,352	3,504	354	164	157	3,580	3,516	3,661			
White	247	209	197	130	54	63	377	263	260			
Other	48	42	40	13	5	5	61	47	45			
TOTAL	3,521	3,603	3,741	497	223	225	4,018	3,826	3,966			
DEGREES AWARDED												
	UNDERGRADUATE			GRADUATE			TOTAL					
	87-88	88-89	89-90	87-88	88-89	89-90	87-88	88-89	89-90			
Black	310	298	284	55	41	39	365	339	323			
White	36	29	28	23	12	12	59	41	40			
Other	6	6	5	2	4	1	8	10	6			
TOTAL	352	333	317	80	57	52	432	390	369			
TOTAL CREDIT HOURS GENERATED												
	UNDERGRADUATE			GRADUATE			TOTAL					
	87-88	88-89	89-90	87-88	88-89	89-90	87-88	88-89	89-90			
Sum	88,325	87,854	94,020	5,465	2,635	2,446	93,790	90,489	96,466			
FACULTY/EPA-HEADCOUNT												
	1988			1989			1990					
	FT	PT	TOTAL	FT	PT	TOTAL	FT	PT	TOTAL			
Professor	40	3	43	30	1	31	33	1	34			
Associate	53	3	56	47	3	50	47	3	50			
Assistant	58	2	60	58	0	58	55	0	55			
Instructor	15	2	17	10	3	13	9	1	10			
Lecturer	4	2	6	0	2	2	0	1	1			
Adjunct	17	95	112	14	113	127	16	68	84			
TOTAL	187	107	294	159	122	281	160	74	234			
BUDGETED FTE	213.3			186.8			183.8					
FACULTY STATISTICS												
	1988**			1989**			1990**					
	# TENURED	MEAN AGE	MEAN SALARY	# TENURED	MEAN AGE	MEAN SALARY	# TENURED	MEAN AGE	MEAN SALARY			
Professor	38	51	42,877	31	51	47,491	33	53	48,567			
Associate	41	50	35,636	49	51	36,759	44	51	39,777			
Assistant	30	47	30,227	34	48	31,485	30	48	33,265			
Instructor	4	58	30,218	5	46	27,318	3	50	31,701			
TOTAL	113	50	\$35,215	119	48	\$34,348	110	49	\$38,035			
INSTRUCTIONAL BUDGET: STATE APPROPRIATIONS												
	1987-88			1988-89			1989-90			1990-91		
Supplies		66,251		78,721		74,922		74,922		74,922		
Communications		14,865		16,365		18,632		18,632		18,632		
Equipment		164,673		164,673		146,762		146,762		146,762		
Travel		20,921		20,921		25,921		25,921		25,921		
Instructional Personnel		7,176,068		7,453,610		6,673,604		7,418,237		7,418,237		
TOTAL		\$7,442,778		\$7,734,290		\$6,939,841		\$7,684,474		\$7,684,474		

NOTE: Equipment for 89-90 includes \$ 75,000 for scientific equipment.

Equipment for 88-89 includes \$124,911 for scientific equipment.

Equipment for 87-88 includes \$124,911 for scientific equipment.

* The Department of Education is included in the 1988 data; The profile of The School of Education, established in 1989, is reported in Table 11.

** Mean Age & Mean Salary include all full-time faculty

TABLE 10
SCHOOL OF BUSINESS PROFILE

APPLICATIONS AND ENROLLMENT: NEW DEGREE-SEEKING STUDENTS

	NEW FRESHMEN			NEW TRANSFERS			NEW GRADUATE		
	1988	1989	1990	1988	1989	1990	1988	1989	1990
Applied	170	118	81	23	2	5	25	30	33
Accepted	140	112	76	23	2	5	15	15	18
Enrolled	79	39	30	14	2	4	11	12	8

FALL ENROLLMENT

	UNDERGRADUATE			GRADUATE			TOTAL		
	1988	1989	1990	1988	1989	1990	1988	1989	1990
Black	279	273	299	17	20	22	296	293	321
White	11	15	19	10	9	9	21	24	28
Other	0	2	4	2	5	3	2	7	7
TOTAL	290	290	322	29	34	34	319	324	356

DEGREES AWARDED

	UNDERGRADUATE			GRADUATE			TOTAL		
	87-88	88-89	89-90	87-88	88-89	89-90	87-88	88-89	89-90
Black	81	72	84	3	1	1	84	73	85
White	5	2	6	1	0	2	6	2	8
Other	0	0	0	0	0	1	0	0	1
TOTAL	86	74	90	4	1	4	90	75	94

TOTAL CREDIT HOURS GENERATED

	UNDERGRADUATE			GRADUATE			TOTAL		
	1987	1988	1989	1987	1988	1989	1987	1988	1989
Sum	9,214	10,486	12,001	177	261	285	9,391	10,747	12,286

FACULTY/EPA-HEADCOUNT

	1988			1989			1990		
	FT	PT	TOTAL	FT	PT	TOTAL	FT	PT	TOTAL
Professor	4	0	4	5	0	5	4	0	4
Associate	10	0	10	12	0	12	10	0	10
Assistant	12	2	14	10	2	12	15	0	15
Instructor	3	0	3	3	0	3	3	0	3
Lecturer	0	1	1	0	1	1	0	0	0
Adjunct	0	5	5	1	12	13	2	12	14
TOTAL	29	8	37	31	15	46	34	12	46

BUDGETED FTE

37.0 37.9 37.9

FACULTY STATISTICS

	1988*			1989*			1990*		
	# TENURED	MEAN AGE	MEAN SALARY	# TENURED	MEAN AGE	MEAN SALARY	# TENURED	MEAN AGE	MEAN SALARY
Professor	4	52	48,829	5	50	52,932	4	53	57,947
Associate	9	50	43,105	10	49	45,785	8	49	48,852
Assistant	2	45	39,120	6	47	41,593	6	48	44,487
Instructor	1	-	-	1	45	25,920	1	45	28,602
TOTAL	16	48	\$41,175	22	48	\$43,493	19	48	\$45,209

INSTRUCTIONAL BUDGET: STATE APPROPRIATIONS

	1987-88	1988-89	1989-90	1990-91
Supplies	11,060	15,060 ***	11,060	11,060
Communications	3,764	3,764	3,764	3,764
Equipment	30,000	30,000	30,000	30,000
Travel	20,329 **	20,329	20,329	20,329
Instruct. Personnel	1,435,907	1,526,504	1,550,606	1,772,480
TOTAL	1,501,060	1,595,657	1,615,759	1,837,633

* Mean age and mean salary include all full-time faculty

** A special allocation of \$10,000 is included.

*** Includes \$2,000 for printing and binding, and \$2,000 for office supplies.

TABLE 11
SCHOOL OF EDUCATION PROFILE

APPLICATIONS AND ENROLLMENT: NEW DEGREE-SEEKING STUDENTS

	NEW FRESHMEN		NEW TRANSFERS		NEW GRADUATE	
	1989	1990	1989	1990	1989	1990
Applied	2	*	4	--	35	155
Accepted	2	*	4	--	31	149
Enrolled	2	*	1	--	21	108

FALL ENROLLMENT FOR DEGREE-SEEKING STUDENTS

	UNDERGRADUATE		GRADUATE		TOTAL	
	1989	1990	1989	1990	1989	1990
Black	55	50	138	151	193	201
White	11	6	65	97	76	103
Other	1	0	1	4	2	4
TOTAL	67	56	204	252	271	308

DEGREES AWARDED

	UNDERGRADUATE		GRADUATE		TOTAL	
	88-89	89-90	88-89	89-90	88-89	89-90
Black	17	28	51	56	68	84
White	2	9	29	39	31	48
Other	1	0	2	1	3	1
TOTAL	20	37	82	96	102	133

TOTAL CREDIT HOURS GENERATED

	UNDERGRADUATE		GRADUATE		TOTAL	
	88-89	89-90	88-89	89-90	88-89	89-90
Sum	3,566	4,290	3,945	3,978	7,511	8,268

FACULTY/EPA-HEADCOUNT

	1989			1990		
	FT	PT	TOTAL	FT	PT	TOTAL
Professor	7	1	8	6	1	7
Associate	5	0	5	5	0	5
Assistant	4	1	5	7	0	7
Instructor	0	0	0	0	1	1
Lecturer	0	0	0	0	0	0
Adjunct	3	14	17	2	17	19
TOTAL	19	16	35	20	19	39

BUDGETED FTE

24.1 24.1

FACULTY STATISTICS**

	1989			1990		
	# TENURE	MEAN AGE	MEAN SALARY	# TENURE	MEAN AGE	MEAN SALARY
Professor	8	56	46,297	7	56	46,813
Associate	5	45	45,282	4	46	46,508
Assistant	2	52	32,720	2	45	34,909
Instructor	--	--	--	--	40	28,118
TOTAL	15	52	\$42,122	13	48	\$40,701

INSTRUCTIONAL BUDGET: STATE APPROPRIATIONS

	1989-90	1990-91
Supplies	5,650	5,650
Communications	1,464	1,464
Equipment	5,000	5,000
Travel	2,700	2,700
Instructional Personnel	972,738	1,086,027
TOTAL	\$987,552	\$1,100,841

* Freshmen are no longer directly accepted into the School of Education

** Mean age and mean salary include all full-time faculty.

TABLE 12

SCHOOL OF LAW PROFILE

APPLICATIONS

	1988	1989	1990
Applied	288	644	749
Accepted	171	228	238
Enrolled	92	143	127

FALL ENROLLMENT

	1988	1989	1990
Black	94	131	141
White	151	166	181
Other	8	3	3
TOTAL	253	300	325

DEGREES AWARDED

	1987-88	1988-89	1989-90
Black	30	28	31
White	40	41	30
Other	2	2	0
TOTAL	72	71	61

TOTAL CREDIT HOURS GENERATED

	1987-88	PROFESSIONAL 1988-89	1989-90
Sum	6,440	6,248	7,746

FACULTY/EPA-HEADCOUNT

	1988			1989			1990		
	FT	PT	TOTAL	FT	PT	TOTAL	FT	PT	TOTAL
Professor	6	0	6	8	0	8	7	0	7
Associate	4	0	4	8	0	8	5	0	5
Assistant	3	0	3	3	0	3	1	0	1
Instructor	0	0	0	0	0	0	0	0	0
Lecturer	0	1	1	0	1	1	0	0	0
Adjunct	3	5	8	1	8	9	3	9	12
TOTAL	16	6	22	20	9	29	16	9	25

BUDGETED FTE

1988	18.5	1989	18.5	1990	18.5
------	------	------	------	------	------

FACULTY STATISTICS

	1988*			1989*			1990*		
	# TENURED	MEAN AGE	MEAN SALARY	# TENURED	MEAN AGE	MEAN SALARY	# TENURED	MEAN AGE	MEAN SALARY
Professor	6	45	62,419	8	45	66,206	7	46	69,441
Associate	0	37	55,037	3	39	52,450	3	43	59,397
Assistant	0	36	46,570	0	34	43,698	0	**	**
Instructor	0	--	--	0	--	--	--	--	--
TOTAL	6	41	\$56,490	11	41	\$55,868	10	42	\$61,008

INSTRUCTIONAL BUDGET: STATE APPROPRIATIONS

	1988-89	1989-90	1990-91
Supplies	4,175	4,500	4,500
Communications	4,363	2,363	2,363
Equipment	19,314	19,500	19,500
Travel	11,419	11,419	11,419
Instructional Personnel	1,065,366	1,129,287	1,197,044
TOTAL	\$1,104,637	\$1,167,069	\$1,234,826

NOTE: Equipment includes \$9,504 for library storage equipment for 87-88.

* Mean age and mean salary include all full-time faculty.

TABLE 13
SCHOOL OF LIBRARY AND INFORMATION SCIENCES PROFILE

APPLICATIONS

	1988	NEW GRADUATE 1989	1990
Applied	57	42	50
Accepted	57	42	48
Enrolled	53	31	36

FALL ENROLLMENT

	1988	GRADUATE 1989	1990
Black	31	26	35
White	91	69	100
Other	12	3	3
TOTAL	134	98	138

DEGREES AWARDED

	1987-88	GRADUATE 1988-89	1989-90
Black	12	11	8
White	19	29	32
Other	5	3	5
TOTAL	36	43	45

TOTAL CREDIT HOURS GENERATED

	1987-88	GRADUATE 1988-89	1989-90
Sum	1,203	1,383	1,140

FACULTY/EPA-HEADCOUNT

	1988			1989			1990		
	FT	PT	TOTAL	FT	PT	TOTAL	FT	PT	TOTAL
Professor	2	0	2	3	0	3	2	0	2
Associate	2	0	2	3	0	3	3	0	3
Assistant	1	0	1	0	0	0	1	0	1
Instructor	1	0	1	1	0	1	0	0	0
Lecturer	0	0	0	0	0	0	0	0	0
Adjunct	1	5	6	2	4	6	2	1	3
TOTAL	7	5	12	9	4	13	8	1	9

BUDGETED FTE

1988	8.5	1989	8.8
------	-----	------	-----

FACULTY STATISTICS

	# TENURED	1988 * MEAN AGE	MEAN SALARY	# TENURED	1989 * MEAN AGE	MEAN SALARY	# TENURED	1990 * MEAN AGE	MEAN SALARY
Professor	2	51	41,622	3	50	45,942	2	**	**
Associate	2	51	34,547	3	49	36,431	3	50	38,430
Assistant	0	--	--	0	--	--	0	**	**
Instructor	0	--	--	0	49	30,924	0	--	--
TOTAL	4	47	\$36,789	6	48	\$38,426	5	49	\$39,239

INSTRUCTIONAL BUDGET: STATE APPROPRIATIONS

	1987-88	1988-89	1989-90	1990-91
Supplies	3,082	3,082	3,500	3,500
Communications	1,267	1,267	1,267	1,267
Equipment	5,000	5,000	5,000	5,000
Travel	1,200	1,200	1,500	1,500
Instructional	302,417	316,758	334,621	354,698
Personnel				
TOTAL	\$312,966	\$327,307	\$345,888	\$365,965

* Mean age and mean salary include all full-time faculty.

TABLE 14

STUDENTS ENROLLED, GRADUATED, SUSPENDED, AND NOT ENROLLED
ONE YEAR AFTER INITIAL ENTRY
(PERCENTAGES)

CLASS	1983	1984	1985	1986	1987	1988	1989
FRESHMEN	%	%	%	%	%	%	%
Enrolled	62	72	71	71	74	76	76
Graduated	0	0	0	0	0	0	0
Suspended	6	2	4	3	3	2	2
Not Enrolled	32	26	25	26	23	22	22
	N=990	N=765	N=669	N=778	N=903	N=764	N=999
LOWER LEVEL TRANSFERS	%	%	%	%	%	%	%
Enrolled	64	65	67	66	70	60	62
Graduated	0	0	0	0	0	0	0
Suspended	3	1	1	1	1	1	1
Not Enrolled	33	34	32	33	29	39	37
	N=151	N=150	N=139	N=156	N=164	N=154	N=224
UPPER LEVEL TRANSFERS	%	%	%	%	%	%	%
Enrolled	56	79	65	60	65	59	83
Graduated	1	2	0	0	0	3	17
Suspended	1	0	0	0	2	0	0
Not Enrolled	41	19	35	40	33	37	0
	N=80	N=52	N=74	N=65	N=48	N=59	N=6
FIRST PROFESSIONAL	%	%	%	%	%	%	%
Enrolled	71	74	80	72	86	76	76
Graduated	2	2	0	0	0	0	0
Not Enrolled	27	24	20	28	14	24	24
	N=133	N=107	N=99	N=93	N=98	N=91	N=143
MASTERS	%	%	%	%	%	%	%
Enrolled	45	54	53	58	62	63	62
Graduated	6	7	5	6	4	5	7
Not Enrolled	50	39	42	36	34	32	31
	N=208	N=193	N=193	N=257	N=184	N=220	N=138

SOURCE: NCHED A-7 Student Retention Data Survey

TABLE 15

GRADUATION PERCENTAGES FOR FIRST-TIME FRESHMEN
1977 - 1986

COHORT	MEAN SAT	AFTER 4 YEARS	AFTER 5 YEARS	AFTER 6 YEARS	AFTER 7 YEARS
1977	700	31%	41%	44%	46%
1978	707	26%	36%	40%	42%
1979	678	19%	32%	39%	40%
1980	624	15%	29%	34%	36%
1981	625	14%	23%	28%	30%
1982	625	12%	23%	27%	28%
1983	636	11%	25%	30%	33%
1984	688	11%	24%	30%	
1985	694	11%	26%		
1986	703	13%			

SOURCE: NCHED A-7 Student Retention Data Survey

TABLE 16

A COMPARISON OF FIRST-TIME FRESHMEN ENROLLED OR GRADUATED AT NCCU
TRADITIONALLY BLACK INSTITUTIONS (TBI), AND IN THE UNC SYSTEM
(PERCENTAGES)

	YEAR OF INITIAL ENTRY						
	1983	1984	1985	1986	1987	1988	1989
AFTER ONE YEAR							
NCCU	62%	72%	72%	71%	74%	76%	76%
TBI	52%	68%	66%	69%	73%	75%	74%
UNC SYSTEM	76%	78%	78%	79%	81%	82%	82%
AFTER TWO YEARS							
NCCU	54%	56%	58%	59%	60%	63%	
TBI	52%	55%	51%	55%	58%	61%	
UNC SYSTEM	64%	66%	66%	67%	69%	72%	
AFTER THREE YEARS							
NCCU	48%	48%	50%	50%	51%		
TBI	45%	46%	45%	48%	51%		
UNC SYSTEM	59%	60%	61%	62%	65%		
AFTER FOUR YEARS							
NCCU	41%	40%	41%	44%			
TBI	38%	39%	38%	41%			
UNC SYSTEM	56%	56%	57%	57%			
AFTER FIVE YEARS							
NCCU	37%	35%	38%				
TBI	36%	37%	34%				
UNC SYSTEM	54%	55%	56%				
AFTER SIX YEARS							
NCCU	36%	36%					
TBI	36%	37%					
UNC SYSTEM	54%	55%					
AFTER SEVEN YEARS							
NCCU	36%						
TBI	37%						
UNC SYSTEM	55%						

SOURCE: NCHED A-7 Student Retention Data Survey--
NCCU, Traditionally Black Institutions, UNC Summary

TABLE 17

COMPARISON OF FACULTY SALARIES BY RANK
FOR NCCU AND COMPARABLE PUBLIC UNIVERSITIES, 1990-91

RANK	NCCU*	COMPARABLE UNIVERSITIES**
Professor	\$51,801	\$52,190
Associate Professor	42,898	41,570
Assistant Professor	35,979	34,460
Instructor	30,927	26,170

* Salary data adjusted to nine-month salary scales for instructional faculty who are full-time EPA employees.

** SOURCE: Chronicle of Higher Education,
VOL. XXXVII NO. 29, April 3, 1991, Page A14

FACTS ABOUT STUDENTS

LIST OF TABLES AND FIGURES

Table 18:	Number of Student Applicants, Acceptances, and Enrollees, Fall 1990	53
Figure 2:	Comparison of Freshmen: Applicants, Acceptances, and Enrollees 1981-1990	54
Figure 3:	Comparison of Transfers: Applicants, Acceptances, and Enrollees 1981-1990	54
Figure 4:	Comparison of Graduate Level: Applicants, Acceptances, and Enrollees 1981-1990	55
Figure 5:	Comparison of First Professional: Applicants, Acceptances, and Enrollees 1981-1990	55
Table 19:	Undergraduate Transfers Into NCCU 1983-1990	56
Table 20:	Distribution of First-Time Freshmen by State, Fall 1990	57
Table 21:	Distribution of North Carolina First-Time Freshmen by County, Fall 1990	58
Table 22:	Distribution of SAT Scores of Entering Freshmen 1986-1990	59
Figure 6:	Average Freshman Total SAT Scores 1981-1990	60
Figure 7:	Average Verbal and Math SAT Scores 1981-1990	60
Figure 8:	Distribution of Total SAT Scores, 1990 Entering Freshmen (Percentages)	61
Figure 9:	Distribution of Math and Verbal SAT Scores, 1990 Entering Freshmen (Percentages)	61
Table 23:	High School Class Rank of Entering Freshmen 1986-1990	62
Table 24:	Average Age of First-Time Freshmen 1981-1990	62
Table 25:	General Characteristics of Enrollment 1988-1990	63
Table 26:	Summary of General Characteristics, Fall 1990	64
Table 27:	Distribution of Headcount Enrollment by Sex 1926-1990	65
Table 28:	Racial Composition of Headcount Enrollment 1982-1990	66
Table 29:	Geographic Origin of Students 1983-1990	67
Table 30:	Geographic Distribution of Students, Fall 1990	68
Table 31:	Distribution of North Carolina Students by County, Fall 1990	69
Table 32:	Mean Age of Undergraduate Students 1980-1990	70
Table 33:	Mean Age of Graduate and First Professional Students 1980-1990	70
Table 34:	Undergraduate Enrollment by Age, Fall 1990	71
Table 35:	Graduate and First Professional Enrollment by Age, Fall 1990	71

Table 36: Undergraduate Enrollment by Field of Study 1986-1990	72
Table 37: Graduate Enrollment by Field of Study 1986-1990	73
Table 38: Undergraduate Degrees Conferred by Field of Study 1986-1990	74
Table 39: Graduate and First Professional Degrees Conferred by Field of Study 1986-1990	75
Table 40: Characteristics of Graduated Students, 1989-90	76
Table 41: Student Financial Aid 1989-90	77
Table 42: Financial Aid Awards Fiscal Year 1986-87 to 1989-90	78

TABLE 18

NUMBER OF STUDENT APPLICANTS
ACCEPTANCES AND ENROLLEES,*
FALL 1990

NEW STUDENTS	IN-STATE				OUT-OF-STATE				TOTAL	
	MEN	%	WOMEN	%	MEN	%	WOMEN	%		%
FIRST-TIME FRESHMEN										
Applicants	596		876		323		464		2259	
Accepted	479	80%	757	86%	125	39%	206	44%	1567	69%
Enrolled	260	54%	419	55%	46	37%	69	33%	794	51%
NEW UNDERGRADUATE TRANSFERS										
Applicants	170		260		59		69		558	
Accepted	161	95%	245	94%	48	81%	62	90%	516	92%
Enrolled	87	54%	132	54%	24	50%	15	24%	258	50%
GRADUATE STUDENTS										
Applicants	87		203		21		14		325	
Accepted	75	86%	187	92%	18	86%	13	93%	293	90%
Enrolled	57	76%	140	75%	8	44%	8	62%	213	73%
FIRST PROFESSIONAL STUDENTS										
Applicants	236		174		204		136		750	
Accepted	86	36%	69	40%	31	15%	52	38%	238	32%
Enrolled	53	62%	46	67%	10	32%	18	35%	127	53%

*Excludes Specials

SOURCE: OCR 16KB1-Applications, Acceptances, and Actual Enrollment
Fall 1990

FIGURE 2

COMPARISON OF FRESHMEN: Applicants, Acceptances, & Enrollees 1981-1990

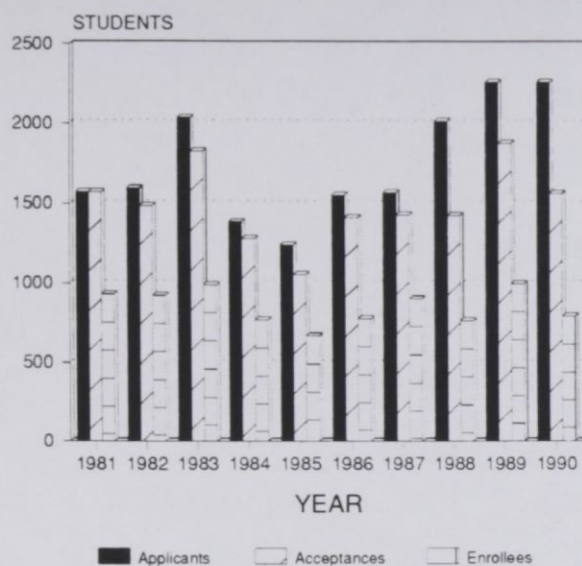


FIGURE 3

COMPARISON OF TRANSFERS: Applicants, Acceptances, & Enrollees 1981-1990

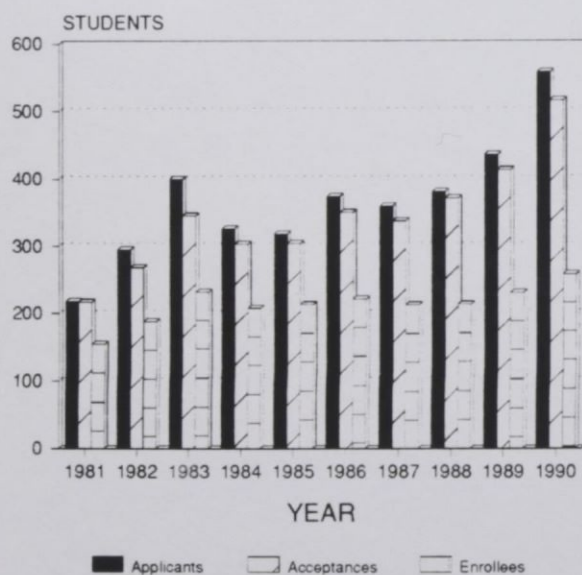


FIGURE 4

COMPARISON OF GRADUATE LEVEL: Applicants, Acceptances, & Enrollees 1981-1990

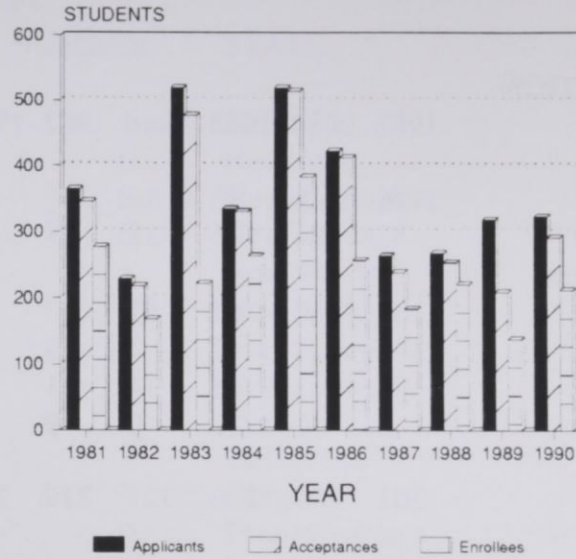


FIGURE 5

COMPARISON OF FIRST PROFESSIONAL: Applicants, Acceptances, & Enrollees 1981-1990

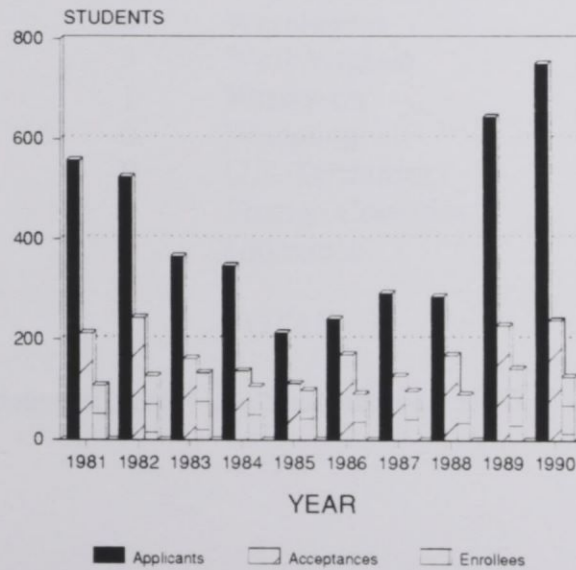


TABLE 19
 UNDERGRADUATE TRANSFERS INTO NCCU

1983-1990

TRANSFER INSTITUTION	1983	1984	1985	1986	1987	1988	1989	1990
In-State Public Senior Institutions	76	48	46	50	51	46	55	77
In-State Private Senior Institutions	38	24	26	28	28	20	28	25
In-State Public Community Colleges & Technical Institutes	105	60	63	62	53	57	61	73
In-State Private Junior Colleges	6	4	7	7	7	12	8	8
Out-of-State Institutions	73	62	66	74	71	77	78	75
Unknown (Out-of-State)	3	7	12	0	9	1	0	3
TOTALS	301	205	220	221	219	213	230	261

SOURCE: NCHED A1.2 New Undergraduate Transfer Students, Fall 1990

TABLE 20
DISTRIBUTION OF FIRST-TIME FRESHMEN BY STATE,
FALL 1990

STATE	NUMBER	STATE	NUMBER
Alabama	1	Nebraska	0
Alaska	0	Nevada	1
Arizona	0	New Hampshire	0
Arkansas	0	New Jersey	22
California	1	New Mexico	0
Colorado	0	New York	20
Connecticut	2	North Carolina	679
Delaware	2	North Dakota	0
District of Columbia	6	Ohio	5
Florida	3	Oklahoma	0
Georgia	7	Oregon	0
Hawaii	0	Pennsylvania	4
Idaho	0	Rhode Island	0
Illinois	0	South Carolina	2
Indiana	0	South Dakota	0
Iowa	0	Tennessee	0
Kansas	0	Texas	0
Kentucky	0	Utah	0
Louisiana	0	Vermont	0
Maine	0	Virginia	15
Maryland	15	Washington	0
Massachusetts	3	West Virginia	0
Michigan	1	Wisconsin	0
Minnesota	0	Wyoming	0
Mississippi	0	U.S. Territories	0
Missouri	0	Foreign Countries	5
Montana	0	Unknown	0
		TOTAL	794

SOURCE: IPEDS EF1 Residence of First-Time Students, Fall 1990

TABLE 21

DISTRIBUTION OF NORTH CAROLINA FIRST-TIME FRESHMEN BY COUNTY,
FALL 1990

COUNTY	NUMBER	COUNTY	NUMBER	COUNTY	NUMBER	COUNTY	NUMBER
Alamance	14	Cumberland	38	Johnston	2	Randolph	3
Alexander	0	Currituck	0	Jones	2	Richmond	2
Alleghany	1	Dare	0	Lee	6	Robeson	19
Anson	3	Davidson	1	Lenoir	10	Rockingham	8
Ashe	0	Davie	1	Lincoln	0	Rowan	4
Avery	0	Duplin	7	McDowell	0	Rutherford	1
Beaufort	6	Durham	80	Macon	0	Sampson	13
Bertie	7	Edgcombe	20	Madison	0	Scotland	2
Bladen	11	Forsyth	23	Martin	11	Stanley	5
Brunswick	9	Franklin	8	Mecklenburg	63	Stokes	2
Buncombe	2	Gaston	3	Mitchell	0	Surry	4
Burke	0	Gates	1	Montgomery	1	Swain	0
Cabarrus	6	Graham	0	Moore	5	Transylvania	0
Caldwell	0	Granville	3	Nash	9	Tyrell	3
Camden	1	Greene	0	New Hanover	13	Union	3
Carteret	1	Guilford	33	Northampton	7	Vance	6
Caswell	3	Halifax	10	Onslow	10	Wake	45
Catawba	2	Harnett	2	Orange	7	Warren	5
Chatham	0	Haywood	0	Pamlico	3	Washington	2
Cherokee	0	Henderson	0	Pasquotank	7	Watauga	0
Chowan	1	Hertford	4	Pender	7	Wayne	12
Clay	0	Hoke	2	Perquimans	2	Wilkes	9
Cleveland	5	Hyde	0	Person	6	Wilson	13
Columbus	16	Iredell	9	Pitt	8	Yadkin	0
Craven	6	Jackson	0	Polk	0	Yancey	0
						TOTAL	679

SOURCE: NCHED A-1.3 Home Base of Students, Fall 1990

TABLE 22
DISTRIBUTION OF SAT SCORES OF ENTERING FRESHMEN
1986-1990

Score Intervals	1986		1987		1988		1989		1990	
	N	%	N	%	N	%	N	%	N	%
Verbal										
750-800	1	<1	--		--		--		--	
700-749	--		--		--		--		--	
650-699	--		2	<1	1	<1	1	<1	--	
600-649	4	1%	1	<1	--		--		--	
550-599	7	1%	4	1%	2	<1	4	<1	2	<1
500-549	11	2%	25	3%	14	2%	18	2%	10	2%
450-499	32	5%	46	6%	37	6%	54	6%	47	7%
400-449	73	12%	83	11%	90	14%	99	12%	106	16%
350-399	108	17%	195	25%	170	27%	202	24%	178	28%
300-349	177	29%	227	29%	178	29%	264	31%	180	28%
250-299	160	26%	157	20%	102	16%	171	20%	95	15%
200-249	46	7%	30	4%	30	5%	27	3%	25	4%
Total Reporting	619		770		624		840		643	
Not Available	159		133		140		159		151	
Total Students	778		903		764		999		794	

	1986		1987		1988		1989		1990	
	N	%	N	%	N	%	N	%	N	%
Mathematical										
750-800	--		--		--		--		--	
700-749	--		--		--		1	<1	--	
650-699	--		1	<1	--		3	<1	1	<1
600-649	5	1%	5	1%	4	1%	1	<1	1	<1
550-599	8	1%	11	1%	7	1%	17	2%	12	2%
500-549	23	4%	17	2%	25	4%	34	4%	38	6%
450-499	50	8%	77	10%	67	11%	77	9%	77	12%
400-449	89	14%	126	16%	127	20%	157	19%	132	21%
350-399	175	28%	193	25%	188	30%	239	28%	214	33%
300-349	192	31%	232	30%	168	27%	241	29%	132	21%
250-299	71	11%	105	14%	38	6%	67	8%	35	5%
200-249	6	1%	3	<1	--		3	<1	1	<1
Total Reporting	619		770		624		840		643	
Not Available	159		133		140		159		151	
Total Students	778		903		764		999		794	

SOURCE: NCHED A.4 First-Time Freshmen Admissions, SAT Fall 1990

FIGURE 6

AVERAGE FRESHMAN TOTAL SAT SCORES 1981-1990

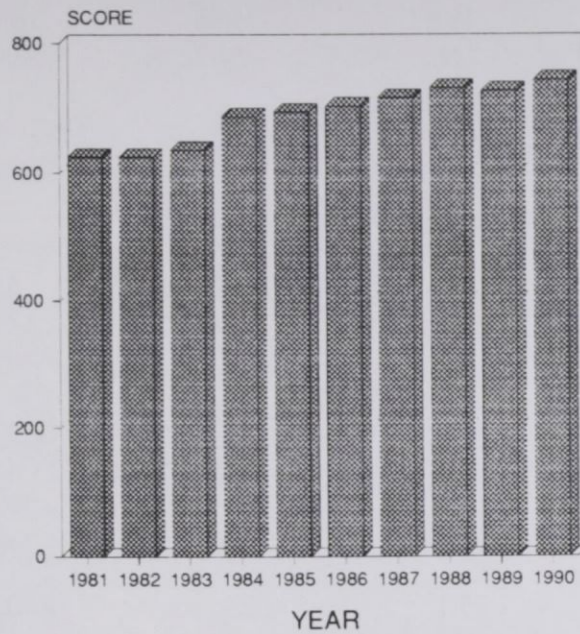


FIGURE 7

AVERAGE VERBAL AND MATH SAT SCORES 1981-1990

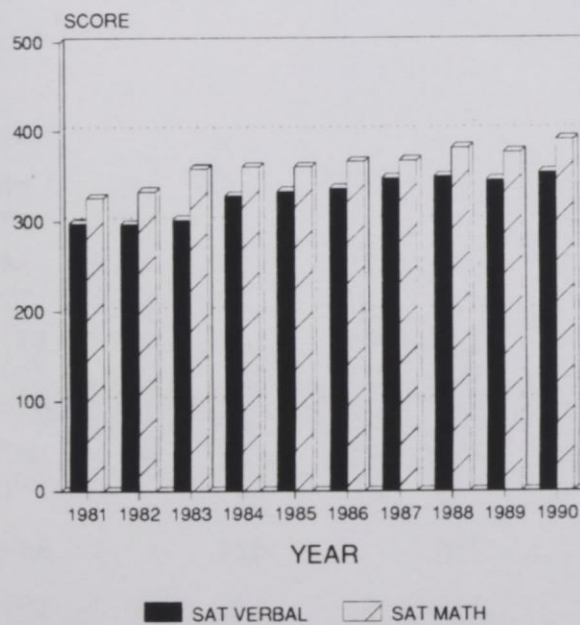


FIGURE 8

DISTRIBUTION OF TOTAL SAT SCORES, 1990 ENTERING FRESHMEN (PERCENTAGES)

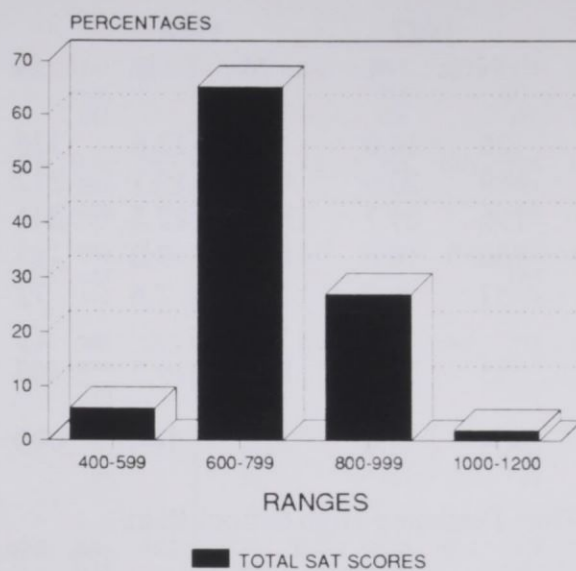


FIGURE 9

DISTRIBUTION OF MATH AND VERBAL SCORES 1990 ENTERING FRESHMEN (PERCENTAGES)

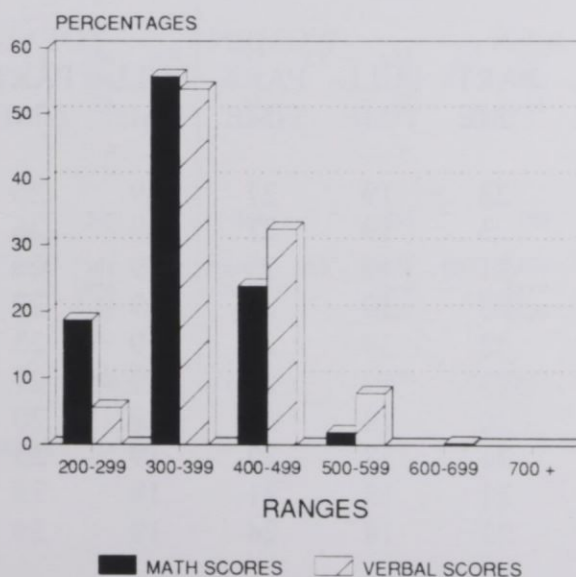


TABLE 23
HIGH SCHOOL CLASS RANK OF ENTERING FRESHMEN
1986-1990

CLASS RANK (Quintiles)	1986		1987		1988		1989		1990	
	N	%	N	%	N	%	N	%	N	%
Highest	122	15.7	126	14.0	96	12.6	126	12.6	129	16.2
Second	163	21.0	189	20.9	146	19.1	212	21.2	230	29.0
Third	167	21.5	196	21.7	172	22.5	241	24.1	176	22.2
Fourth	122	15.6	150	16.6	145	19.0	183	18.3	124	15.6
Fifth	58	7.5	57	6.3	58	7.6	72	7.21	31	3.9
Not Available	146	18.8	185	20.5	147	19.2	165	16.5	104	13.1
TOTAL	778	100	903	100	764	100	999	100	794	100

SOURCE: NCHED A.4 First Time Freshmen High School Rank

TABLE 24
AVERAGE AGE OF FIRST-TIME FRESHMEN
1981-1990

YEAR	MEN		WOMEN		TOTAL		TOTAL MEANS
	FULL- TIME	PART- TIME	FULL- TIME	PART- TIME	FULL- TIME	PART- TIME	
1981	19	23	19	27	19	26	19
1982	19	23	19	27	19	26	19
1983	19	21	19	25	19	24	19
1984	19	25	19	29	19	27	20
1985	19	22	19	27	19	25	19
1986	19	23	19	29	19	27	19
1987	19	20	19	21	19	20	19
1988	19	21	18	25	19	23	19
1989	18	21	18	21	18	21	18
1990	19	23	18	24	19	24	19

SOURCE: Student Data Files

TABLE 25

GENERAL CHARACTERISTICS OF ENROLLMENT
1988-1990

CHARACTERISTICS	1988						1989						1990					
	MEN	%	WOMEN	%	TOTAL	%	MEN	%	WOMEN	%	TOTAL	%	MEN	%	WOMEN	%	TOTAL	%
UNDERGRADUATE																		
FRESHMAN	560	10.8	787	15.2	1347	26.0	568	10.6	893	16.7	1461	27.3	555	10.1	797	14.5	1352	24.7
Full-Time	469		637		1106		486		785		1271		504		706		1210	
Part-Time	91		150		241		82		108		190		51		91		142	
SOPHOMORE	366	7.1	654	12.6	1020	19.7	400	7.5	564	10.6	964	18.0	445	8.1	650	11.9	1095	20.0
Full-Time	323		568		891		364		517		881		401		583		984	
Part-Time	43		86		129		36		47		83		44		67		111	
JUNIOR	263	5.1	481	9.3	744	14.4	268	5.0	529	9.9	797	14.9	352	6.4	509	9.3	861	15.7
Full-Time	219		406		625		223		442		665		302		427		729	
Part-Time	44		75		119		45		87		132		50		82		132	
SENIOR	243	4.7	457	8.8	700	13.5	250	4.7	488	9.1	738	13.8	266	4.9	545	9.9	811	14.8
Full-Time	161		329		490		165		346		511		181		390		571	
Part-Time	82		128		210		85		142		227		85		155		240	
SPECIAL	33	0.6	54	1.0	87	1.7	46	0.9	64	1.2	110	2.1	32	0.6	31	0.6	63	1.1
Full-Time	3		11		14		10		17		27		3		4		7	
Part-Time	30		43		73		36		47		83		29		27		56	
UNDERGRADUATE																		
TOTAL	1465	28.3	2433	47.0	3898	75.2	1532	28.7	2538	47.5	4070	76.2	1650	30.1	2532	46.2	4182	76.3
Full-Time	1175		1951		3126		1248		2107		3355		1391		2110		3501	
Part-Time	290		482		772		284		431		715		259		422		681	
FTE	1314		2172		3486		1391		2317		3708		1528		2323		3851	
GRADUATE																		
Full-Time	304	5.9	724	14.0	1028	19.8	288	5.4	685	12.8	973	18.2	287	5.2	687	12.5	974	17.8
Part-Time	54		79		133		46		74		120		57		88		145	
Special	154		373		527		137		302		439		134		370		504	
Full-Time	96		272		368		105		309		414		96		229		325	
Part-Time	22		45		67		18		42		60		19		38		57	
FTE	74		227		301		87		267		354		77		191		268	
FTE	209		447		656		196		428		624		196		429		625	
FIRST-PROFESSIONAL																		
Full-Time	130	2.5	126	2.4	256	4.9	147	2.8	153	2.9	300	5.6	162	3.0	163	3.0	325	5.9
Part-Time	105		95		200		136		146		282		151		151		302	
Special	23		30		53		11		7		18		9		9		18	
Full-Time	2		1		3													
Part-Time	0		0		0								2		3		5	
FTE	2		1		3													
FTE	123		118		241		144		151		295		158		159		317	
TOTALS																		
Full-Time	1899	36.6	3283	63.4	5182	100	1967	36.8	3376	63.2	5343	100	2099	38.3	3382	61.7	5481	100
Part-Time	1356		2170		3526		1448		2369		3817		1618		2387		4005	
FTE	543		1113		1656		519		1007		1526		481		995		1476	
TOTAL FTE	1646		2737		4383		1731		2893		4627		1882		2911		4793	

SOURCE: NCHED A1.1 Resident Credit Enrollment

TABLE 26

SUMMARY OF GENERAL CHARACTERISTICS,
FALL 1990

CLASSIFICATION	BLACK		WHITE		OTHER		TOTAL		TOTALS
	Male	Female	Male	Female	Male	Female	Male	Female	
UNDERGRADUATE									
Freshman	514	756	29	32	12	9	555	797	1352
Sophomore	414	618	20	23	11	9	445	650	1095
Junior	329	483	20	21	3	5	352	509	861
Senior	224	501	39	37	3	7	266	545	811
Special Undergraduate	24	20	8	8	0	3	32	31	63
Graduate	107	255	69	197	15	6	191	458	649
Special Graduate	52	126	44	101	0	2	96	229	325
First Professional	52	85	106	74	2	1	160	160	320
Special Professional	2	2	0	1	0	0	2	3	5
TOTALS	1718	2846	335	494	46	42	2099	3382	5481

SOURCE: Student Data File, Fall 1990

TABLE 27

DISTRIBUTION OF HEADCOUNT ENROLLMENT BY SEX

1926-1990

FALL SEMESTER	MALE		FEMALE		TOTAL ENROLLMENT
	N	%	N	%	
1926	8	25	24	75	32
1930	148	28	382	72	530
1935	138	23	472	77	610
1940	245	34	475	66	720
1945	253	30	601	70	854
1950	567	44	726	56	1293
1955	576	41	823	59	1399
1960	785	40	1170	60	1955
1965	950	39	1539	61	2489
1970	1182	38	1967	62	3149
1975	1568	40	2332	60	3900
1976	1933	41	2832	59	4765
1977	1901	39	2954	61	4855
1978	1891	39	2919	61	4810
1979	1915	39	3002	61	4917
1980	1897	39	3013	61	4910
1981	1863	38	3081	62	4944
1982	1852	37	3138	63	4990
1983	1937	37	3291	63	5228
1984	1717	38	2835	62	4552
1985	1822	39	2878	61	4700
1986	1856	37	3132	63	4988
1987	1849	36	3239	64	5088
1988	1899	37	3283	63	5182
1989	1967	37	3376	63	5343
1990	2099	38	3382	62	5481

SOURCE: NCHED A-1.1 Resident Credit Enrollment

TABLE 28

RACIAL COMPOSITION OF HEADCOUNT ENROLLMENT

1982-1990

YEAR	BLACK	%	WHITE	%	OTHER	%	TOTAL
1982	4285	85.9	609	12.2	96	1.9	4990
1983	4464	85.4	647	12.4	117	2.2	5228
1984	3773	82.9	671	14.7	108	2.4	4552
1985	3918	83.4	689	14.7	93	2.0	4700
Undergraduate	3277	88.3	363	9.8	70	1.9	3710
Graduate	484	71.6	173	25.6	19	2.8	676
Professional	157	50.0	153	48.7	4	1.3	314
1986	4112	82.4	804	16.1	72	1.4	4988
Undergraduate	3447	87.8	434	11.1	43	1.1	3924
Graduate	538	68.4	224	28.5	24	3.1	786
Professional	127	45.7	146	52.5	5	1.8	278
1987	4228	83.1	775	15.2	85	1.7	5088
Undergraduate	3589	89.7	361	9.0	53	1.3	4003
Graduate	534	64.4	267	32.2	28	3.4	829
Professional	105	41.0	147	57.4	4	1.6	256
1988	4280	82.6	805	15.5	97	1.9	5182
Undergraduate	3556	91.2	286	7.3	56	1.4	3898
Graduate	630	61.3	365	35.5	33	3.2	1028
Professional	94	36.7	154	60.2	8	3.1	256
1989	4444	83.2	811	15.2	88	1.6	5343
Undergraduate	3758	92.3	254	6.2	58	1.4	4070
Graduate	555	57.0	391	40.2	27	2.8	973
Professional	131	43.7	166	55.3	3	1.0	300
1990	4564	83.3	829	15.1	88	1.6	5481
Undergraduate	3883	92.9	237	5.7	62	1.5	4182
Graduate	540	55.4	411	42.2	23	2.4	974
Professional	141	43.4	181	55.7	3	0.9	325

SOURCE: OE Form 23-2.3 Fall Enrollment and Compliance Report
of Institutions of Higher Education

TABLE 29
GEOGRAPHIC ORIGIN OF STUDENTS
1983-1990

GEOGRAPHIC ORIGIN		1983	1984	1985	1986	1987	1988	1989	1990
Durham County	N	1261	1260	1268	1402	1279	1222	1158	1169
	%	24	28	27	28	25	24	22	21
Adjacent Counties*	N	724	707	688	753	792	890	938	922
	%	14	16	15	15	16	17	18	16
Other N.C. Counties	N	2516	2015	2078	2179	2278	2324	2440	2630
	%	48	44	44	44	45	45	46	48
Out-of-State	N	647	504	603	463	665	687	755	721
	%	12	11	13	9	13	13	14	13
U.S. Territories	N	1	3	5	4	5	6	2	2
	%	<1	<1	<1	<1	<1	<1	<1	<1
Foreign Countries	N	79	63	58	107	69	53	50	37
	%	2	1	1	2	1	1	1	1
Unknown	N				80				
	%				2				
TOTALS		5228	4552	4700	4988	5088	5182	5343	5481

* Adjacent Counties: Chatham, Granville, Orange, Person, Wake

SOURCE: NCHED A 1.3 Home Base of Students

TABLE 30
GEOGRAPHIC DISTRIBUTION OF STUDENTS,
FALL 1990

STATE	NUMBER	STATE	NUMBER
Alabama	1	Nebraska	1
Alaska	1	Nevada	2
Arizona	0	New Hampshire	0
Arkansas	1	New Jersey	95
California	10	New Mexico	0
Colorado	1	New York	137
Connecticut	16	North Carolina	4721
Delaware	22	North Dakota	0
District of Columbia	44	Ohio	24
Florida	17	Oklahoma	0
Georgia	15	Oregon	0
Hawaii	0	Pennsylvania	45
Idaho	0	Rhode Island	0
Illinois	6	South Carolina	17
Indiana	0	South Dakota	0
Iowa	0	Tennessee	9
Kansas	0	Texas	4
Kentucky	2	Utah	0
Louisiana	3	Vermont	0
Maine	0	Virginia	105
Maryland	98	Washington	4
Massachusetts	15	West Virginia	1
Michigan	17	Wisconsin	2
Minnesota	2	Wyoming	1
Mississippi	0	U.S. Territories	2
Missouri	3	Foreign Countries	37
Montana	0	Unknown	0
		TOTAL	5481

SOURCE: NCHED A 1.3 Home Base of Students, Fall 1990

TABLE 31

DISTRIBUTION OF NORTH CAROLINA STUDENTS BY COUNTY,
FALL 1990

COUNTY NUMBER	COUNTY NUMBER	COUNTY NUMBER	COUNTY NUMBER
Alamance 61	Cumberland 219	Johnston 31	Randolph 5
Alexander 3	Currituck 4	Jones 5	Richmond 19
Alleghany 3	Dare 0	Lee 22	Robeson 83
Anson 16	Davidson 8	Lenoir 49	Rockingham 25
Ashe 1	Davie 2	Lincoln 2	Rowan 20
Avery 0	Duplin 52	McDowell 2	Rutherford 2
Beaufort 18	Durham 1169	Macon 0	Sampson 37
Bertie 32	Edgecombe 110	Madison 1	Scotland 30
Bladen 42	Forsyth 108	Martin 42	Stanley 12
Brunswick 24	Franklin 38	Mecklenburg 222	Stokes 3
Buncombe 12	Gaston 20	Mitchell 2	Surry 8
Burke 7	Gates 5	Montgomery 9	Swain 0
Cabarrus 13	Graham 0	Moore 38	Transylvania 3
Caldwell 4	Granville 99	Nash 65	Tyrell 5
Camden 1	Greene 11	New Hanover 71	Union 8
Carteret 6	Guilford 149	Northampton 42	Vance 77
Caswell 19	Halifax 61	Onslow 34	Wake 542
Catawba 14	Harnett 39	Orange 180	Warren 52
Chatham 36	Haywood 2	Pamlico 11	Washington 21
Cherokee 0	Henderson 3	Pasquotank 24	Watauga 2
Chowan 13	Hertford 26	Pender 21	Wayne 82
Clay 0	Hoke 14	Perquimans 4	Wilkes 12
Cleveland 21	Hyde 2	Person 65	Wilson 62
Columbus 46	Iredell 17	Pitt 68	Yadkin 1
Craven 45	Jackson 1	Polk 3	Yancey 1

SOURCE: NCHED A 1.3 Home Base of Students, Fall 1990

TOTAL 4721

TABLE 32

MEAN AGE OF UNDERGRADUATE STUDENTS

1980-1990

YEAR	MEN		WOMEN		TOTAL		TOTAL MEANS
	FULL-TIME	PART-TIME	FULL-TIME	PART-TIME	FULL-TIME	PART-TIME	
1980	21	27	21	29	21	28	22
1981	21	28	21	30	21	29	22
1982	22	28	22	30	22	30	23
1983	21	26	21	28	21	27	23
1984	21	28	21	30	21	29	23
1985	21	28	21	31	21	30	22
1986	21	30	21	32	21	32	24
1987	21	27	21	30	21	29	23
1988	21	28	21	30	21	29	23
1989	20	27	20	29	20	28	21
1990	21	28	21	30	21	29	23

TABLE 33

MEAN AGE OF GRADUATE AND FIRST PROFESSIONAL STUDENTS

1980-1990

YEAR	MEN		WOMEN		TOTAL		TOTAL MEANS
	FULL-TIME	PART-TIME	FULL-TIME	PART-TIME	FULL-TIME	PART-TIME	
1980	28	32	28	32	28	32	30
1981	29	32	28	33	28	32	31
1982	29	34	29	34	29	34	31
1983	30	34	28	35	29	34	32
1984	30	34	29	34	30	34	32
1985	30	35	29	35	30	35	33
1986	30	34	29	35	30	35	33
1987	30	35	29	36	30	36	34
1988	30	35	30	35	30	35	34
1989	29	34	30	35	30	35	33
1990	31	36	31	35	31	35	34

SOURCE: Student Data Files

TABLE 34
 UNDERGRADUATE ENROLLMENT BY AGE,
 FALL 1990

AGE	IN-STATE STUDENTS								OUT-OF-STATE STUDENTS							
	MEN				WOMEN				MEN				WOMEN			
	FULL-TIME	PART-TIME	FULL-TIME	PART-TIME	FULL-TIME	PART-TIME	FULL-TIME	PART-TIME	FULL-TIME	PART-TIME	FULL-TIME	PART-TIME	FULL-TIME	PART-TIME		
N	%	N	%	N	%	N	%	N	%	N	%	N	%	N	%	
Less than 18	5	0.1	1	<.1										14	0.3	
18	173	4.1	2	<.1	20	0.5	8	0.2	46	1.1			66	1.6	1	<.1
19	224	5.4	9	0.2	335	8.0	8	0.2	69	1.6	4	0.1	94	2.2	6	0.1
20	199	4.8	15	0.4	396	9.5	12	0.3	42	1.0	2	<.1	75	1.8	9	0.2
21	162	3.9	11	0.3	303	7.2	17	0.4	52	1.2	1	<.1	47	1.1	1	<.1
22	107	2.6	22	0.5	286	6.8	31	0.7	33	0.8	1	<.1	24	0.6	3	0.1
23	68	1.6	20	0.5	153	3.7	32	0.8	13	0.3		<.1	12	0.3	1	<.1
24	38	0.9	17	0.4	74	1.8	15	0.4	5	0.1	1	<.1	6	0.1		
25-30	88	2.1	69	1.6	24	0.6	96	2.3	5	0.1	2	<.1	10	0.2	1	<.1
31-35	30	0.7	32	0.8	91	2.2	64	1.5	2	<.1	1	<.1	1	<.1	3	0.1
36-40	12	0.3	30	0.7	29	0.7	66	1.6					1	<.1	1	<.1
41-50	9	0.2	16	0.4	19	0.5	42	1.0								
51-64	2	<.1	3	0.1	30	0.7	4	0.1								
65 and over																
Unknown																
TOTALS	1117	26.7	247	5.83	1760	42.1	396	9.4	274	6.5	12	0.1	350	8.3	26	0.5

TABLE 35
 GRADUATE AND FIRST PROFESSIONAL ENROLLMENT BY AGE,
 FALL 1990

AGE	IN-STATE STUDENTS								OUT-OF-STATE STUDENTS							
	MEN				WOMEN				MEN				WOMEN			
	FULL-TIME	PART-TIME	FULL-TIME	PART-TIME	FULL-TIME	PART-TIME	FULL-TIME	PART-TIME	FULL-TIME	PART-TIME	FULL-TIME	PART-TIME	FULL-TIME	PART-TIME		
N	%	N	%	N	%	N	%	N	%	N	%	N	%	N	%	
Less than 18																
18							1	0.1								
19																
20																
21							1									
22	4	0.3	1	0.1	12	0.9	3	0.2	2	0.2			8	0.6	0.0	
23	10	0.8	3	0.2	25	1.9	11	0.8	7	0.5	1	0.1	11	0.8	1	0.1
24	19	1.5	3	0.2	16	1.2	14	1.1	3	0.2			5	0.4	3	0.2
25-30	82	6.3	58	4.5	88	6.8	147	11.3	12	0.9	3	0.2	11	0.8	4	0.3
31-35	27	2.1	40	3.1	27	2.1	121	9.3	9	0.7	3	0.2	5	0.4	1	0.1
36-40	26	2.0	56	4.3	28	2.2	111	8.5	2	0.2	2	0.2	1	0.1	1	0.1
41-50	16	1.2	43	3.3	33	2.5	139	10.7	1	0.1			2	0.2		
51-64	7	0.5	9	0.7	5	0.4	15	1.2								
65 and over																
Unknown																
TOTALS	191	15	213	16	234	18	563	43	36	3	9	1	43	3	10	1

SOURCE: NCHED A-1.6 Survey of Headcount by Age Fall 1990

TABLE 36
UNDERGRADUATE ENROLLMENT BY FIELD OF STUDY
1986-1990

DISCIPLINE, DIVISION AND SPECIALTY COLLEGE OF ARTS & SCIENCES	1986		1987		1988		1989		1990	
	N	%	N	%	N	%	N	%	N	%
Department of Art Art	80	2.0	79	2.0	72	1.8	67	1.6	76	1.8
Department of Biology Biology, General	158	4.0	168	4.2	175	4.5	191	4.7	195	4.7
Department of Chemistry Chemistry	27	0.7	34	0.8	31	0.8	27	0.7	38	0.9
Department of Dramatic Art Dramatic Arts	25	0.6	31	0.8	26	0.7	29	0.7	29	0.7
Department of English English, General	113	2.9	144	3.6	134	3.4	156	3.8	159	3.8
Department of Geography Geography	14	0.4	10	0.2	16	0.4	15	0.4	19	0.5
Department of Health Education Health Education	32	0.8	35	0.9	40	1.0	43	1.1	39	0.9
Department of History History	20	0.5	20	0.5	27	0.7	35	0.9	58	1.4
Social Sciences, General	1	0.0	1	0.0	5	0.1	4	0.1	3	0.1
Afro-American Studies	—	—	1	0.0	—	—	—	—	—	—
Department of Home Economics Clothing and Textiles	3	0.1	14	0.3	21	0.5	30	0.7	37	0.9
Foods and Nutrition	1	0.0	3	0.1	7	0.2	9	0.2	11	0.3
Home Economics, General	77	2.0	66	1.6	54	1.4	46	1.1	39	0.9
Department of Mathematics & Computer Science Mathematics, General	132	3.4	116	2.9	75	1.9	66	1.6	85	2.0
Computer & Information Science	48	1.2	123	3.1	159	4.1	174	4.3	207	4.9
Department of Modern Foreign Languages French	—	—	—	—	1	0.0	3	0.1	3	0.1
Spanish	1	0.0	3	0.1	4	0.1	6	0.1	5	0.1
Department of Music Music	47	1.2	48	1.2	46	1.2	51	1.3	54	1.3
Department of Nursing Nursing	327	8.3	253	6.3	53	1.4	50	1.2	60	1.1
Department of Philosophy Philosophy	—	—	—	—	1	0.0	—	—	2	0.0
Department of Physical Education Parks and Recreation	20	0.5	13	0.3	18	0.5	22	0.5	27	0.6
Physical Education	58	1.5	53	1.3	56	1.4	56	1.4	40	1.0
Department of Physics Physics	32	0.8	42	1.0	40	1.0	33	0.8	38	0.9
Department of Political Science Criminal Justice Administration	190	4.8	213	5.3	196	5.0	213	5.2	228	5.5
Political Science & Government	353	9.0	283	7.1	443	11.4	448	11.0	486	11.6
Department of Psychology Psychology, General	77	2.0	94	2.3	102	2.6	134	3.3	127	3.0
Department of Sociology Sociology	72	1.8	71	1.8	80	2.1	83	2.0	99	2.4
<i>SCHOOL OF BUSINESS</i> Accounting	178	4.5	68	1.7	60	1.5	75	1.8	90	2.2
Business Economics	14	0.4	2	0.0	2	0.1	1	0.0	1	0.0
Business Management and Administration	195	5.0	174	4.3	171	4.4	170	4.2	199	4.8
Business, Commerce & Distributive Education	8	0.2	15	0.4	57	1.5	44	1.1	32	0.8
<i>SCHOOL OF EDUCATION</i> Elementary Education, General	150	3.8	63	1.6	63	1.6	67	1.6	55	1.3
Junior High School Education (New Program as of 10/89)	—	—	—	—	—	—	—	—	1	0.0
Specials Undecided	364	9.3	203	5.1	87	2.2	110	2.7	63	1.5
	1107	28.211	1560	39.0	1576	40.431	1612	39.6	1577	37.7
TOTALS	3924	100	4003	100	3898	100	4070	100	4182	100

SOURCE: Student Data Files

TABLE 37
GRADUATE ENROLLMENT BY FIELD OF STUDY

DISCIPLINE, DIVISION AND SPECIALTY	1986-1990									
	1986		1987		1988		1989		1990	
	N	%	N	%	N	%	N	%	N	%
COLLEGE OF ARTS & SCIENCES										
Department of Biology Biology, General	22	2.1	16	1.5	12	0.9	13	1.0	13	1.0
Department of Chemistry Chemistry, General	14	1.3	12	1.1	8	0.6	6	0.5	4	0.3
Department of English English, General	13	1.2	15	1.4	15	1.2	18	1.4	16	1.2
Department of History History	11	1.0	8	0.7	13	1.0	11	0.9	12	0.9
Department of Home Economics Home Economics, General	24	2.3	20	1.8	19	1.5	19	1.5	17	1.3
Department of Mathematics & Computer Science Mathematics, General	18	1.7	14	1.3	19	1.5	11	0.9	10	0.8
Department of Modern Foreign Languages French	3	0.3	2	0.2	--	--	1	0.1	2	0.2
Department of Music Music	2	0.2	4	0.4	6	0.5	5	0.4	2	0.2
Department of Physical Education Physical Education Parks and Recreation	10 4	0.9 0.4	8 3	0.7 0.3	13 6	1.0 0.5	15 3	1.2 0.2	15 2	1.2 0.2
Department of Psychology Psychology, General	36	3.4	28	2.6	37	2.9	30	2.4	37	2.8
Department of Political Science Public Administration Law Enforcement and Corrections	47 24	4.4 2.3	56 19	5.2 1.8	71 21	5.5 1.6	66 23	5.2 1.8	63 25	4.8 1.9
Department of Sociology Sociology	5	0.5	6	0.6	3	0.2	2	0.2	7	0.5
SCHOOL OF BUSINESS										
Business, Commerce & Distributive Education Business Management and Administration	2 21	0.2 2.0	2 22	0.2 2.0	4 25	0.3 1.9	7 27	0.5 2.1	6 28	0.5 2.2
SCHOOL OF EDUCATION										
Special Education Educational Administration & Supervision Educational Media Elementary Education, General Junior High School (Middle Grades) Education Speech Correction Student Personnel, Guidance & Counseling	17 33 7 147 2 2 47	1.6 3.1 0.7 13.8 0.2 0.2 4.4	16 26 8 89 4 18 68	1.5 2.4 0.7 8.2 0.4 1.7 6.3	26 51 12 44 19 12 90	2.0 4.0 0.9 3.4 1.5 0.9 7.0	18 40 10 34 11 9 82	1.4 3.1 0.8 2.7 0.9 0.7 6.4	36 40 18 28 5 24 101	2.8 3.1 1.4 2.2 0.4 1.8 7.8
SCHOOL OF LAW										
Juris Doctor's Special Law	278 --	26.1 --	256 --	23.6 --	253 3	19.7 0.2	300 --	23.6 --	320 5	24.6 0.4
SCHOOL OF LIBRARY & INFORMATION SCIENCES										
Library Science, General Information Sciences & Systems (New Program as of 2/89)	98 --	9.2 --	110 --	10.1 --	134 --	10.4 --	98 --	7.7 --	136 2	10.5 0.2
Specials	177	16.6	255	23.5	368	28.7	414	32.5	325	25.0
TOTALS	1064	100	1085	100	1284	100	1273	100	1299	100

SOURCE: Student Data Files

TABLE 38
 UNDERGRADUATE DEGREES CONFERRED BY FIELD OF STUDY
 1986-1990

DISCIPLINE, DIVISION AND SPECIALTY COLLEGE OF ARTS & SCIENCES	1986		1987		1988		1989		1990	
	N	%	N	%	N	%	N	%	N	%
Department of Art Art	7	1.6	9	2.0	6	1.4	9	2.1	7	1.6
Department of Biology Biology, General	20	4.6	17	3.9	24	5.5	15	3.6	29	6.5
Department of Chemistry Chemistry	6	1.4	7	1.6	7	1.6	7	1.7	3	0.7
Department of Dramatic Art Dramatic Arts	3	0.7	3	0.7	3	0.7	6	1.4	7	1.6
Department of English English, General	14	3.2	9	2.0	24	5.5	21	5.0	20	4.5
Department of Geography Geography	2	0.5	5	1.1	3	0.7	4	1.0	6	1.4
Department of Health Education Health Education	6	1.4	4	0.9	17	3.9	4	1.0	10	2.3
Department of History History Social Sciences, General	7	1.6	10	2.3	9	2.1	7	1.7	10	2.3
Department of Home Economics Clothing and Textiles	5	1.2	—	—	—	—	1	0.2	1	0.2
Foods and Nutrition	6	1.4	1	0.2	—	—	—	—	—	—
Home Economics, General	4	0.9	20	4.5	13	3.0	15	3.6	11	2.5
Department of Mathematics & Computer Science Mathematics, General	15	3.5	8	1.8	16	3.7	7	1.7	6	1.4
Computer & Information Science	—	—	2	0.5	—	—	5	1.2	9	2.0
Department of Modern Foreign Languages French	1	0.2	—	—	—	—	—	—	—	—
Spanish	1	0.2	1	0.2	—	—	—	—	3	0.7
Department of Music Music	4	0.9	6	1.4	2	0.5	4	1.0	3	0.7
Department of Nursing Nursing	44	10.2	45	10.2	29	6.6	24	5.7	7	1.6
Department of Philosophy Philosophy	—	—	1	0.2	1	0.2	—	—	—	—
Department of Physical Education Parks and Recreation	—	—	7	1.6	2	0.5	4	1.0	5	1.1
Physical Education	15	3.5	3	0.7	7	1.6	2	0.5	5	1.1
Department of Physics Physics	1	0.2	1	0.2	3	0.7	2	0.5	1	0.2
Department of Political Science Law Enforcement and Corrections	63	14.5	41	9.3	46	10.5	30	7.1	32	7.2
Political Science & Government	82	18.9	101	23.0	96	21.9	137	32.5	111	25.0
Department of Psychology Psychology, General	12	2.8	7	1.6	12	2.7	12	2.9	9	2.0
Department of Sociology Sociology	19	4.4	25	5.7	20	4.6	17	4.0	22	5.0
<i>SCHOOL OF BUSINESS</i>										
Accounting	25	5.8	13	3.0	19	4.3	15	3.6	14	3.2
Business Economics	—	—	1	0.2	—	—	1	0.2	—	—
Business Management and Administration	48	11.1	74	16.8	67	15.3	56	13.3	75	16.9
Business, Commerce & Distributive Education	2	0.5	3	0.7	—	—	2	0.5	1	0.2
<i>SCHOOL OF EDUCATION</i>										
Elementary Education, General	21	4.8	16	3.6	12	2.7	14	3.3	26	5.9
Junior High School Education (New Program as of 10/89)	—	—	—	—	—	—	—	—	11	2.5
TOTALS	433	100	440	100	438	100	421	100	444	100

SOURCE: Graduated Student Data Files

TABLE 39
GRADUATE AND FIRST PROFESSIONAL DEGREES CONFERRED
BY FIELD OF STUDY

DISCIPLINE, DIVISION AND SPECIALTY	1986-1990									
	1986		1987		1988		1989		1990	
	N	%	N	%	N	%	N	%	N	%
COLLEGE OF ARTS & SCIENCES										
Department of Biology Biology, General	5	2.6	6	2.9	2	1.0	6	2.4	3	1.2
Department of Chemistry Chemistry, General	3	1.6	3	1.5	2	1.0	4	1.6	2	0.8
Department of English English, General	2	1.0	4	2.0	1	0.5	8	3.2	3	1.2
Department of History History	5	2.6	6	2.9	3	1.6	3	1.2	6	2.3
Department of Home Economics Home Economics, General	2	1.0	3	1.5	6	3.1	3	1.2	5	1.9
Department of Mathematics & Computer Science Mathematics, General	3	1.6	3	1.5	2	1.0	4	1.6	3	1.2
Department of Modern Foreign Languages French	--	--	--	--	--	--	--	--	--	--
Department of Music Music	--	--	1	0.5	--	--	1	0.4	--	--
Department of Physical Education Physical Education Parks and Recreation	3	1.6	4	2.0	2	1.0	1	0.4	1	0.4
Department of Psychology Psychology, General	3	1.6	11	5.4	6	3.1	8	3.2	7	2.7
Department of Political Science Public Administration Law Enforcement and Corrections	--	--	--	--	7	3.6	15	5.9	15	5.8
Department of Sociology Sociology	2	1.0	1	0.5	--	--	1	0.4	2	0.8
SCHOOL OF BUSINESS										
Business, Commerce & Distributive Education Business Management and Administration	2	1.0	2	1.0	1	0.5	1	0.4	1	0.4
5	2.6	3	1.5	3	1.6	--	--	3	1.2	
SCHOOL OF EDUCATION										
Special Education	10	5.2	12	5.9	6	3.1	6	2.4	10	3.9
Educational Administration & Supervision	9	4.7	9	4.4	3	1.6	11	4.3	18	7.0
Educational Media	4	2.1	--	--	2	1.0	8	3.2	10	3.9
Elementary Education, General	10	5.2	13	6.3	10	5.2	17	6.7	13	5.0
Junior High School (Middle Grades) Education	--	--	--	--	1	0.5	6	2.4	9	3.5
Speech Correction	5	2.6	2	1.0	2	1.0	8	3.2	1	0.4
Student Personnel, Guidance & Counseling	18	9.3	10	4.9	25	13.0	25	9.9	35	13.6
SCHOOL OF LAW										
Juris Doctor's	85	44.0	86	42.0	72	37.5	71	28.1	61	23.6
SCHOOL OF LIBRARY & INFORMATION SCIENCES										
Library Science, General	17	8.8	26	12.7	36	18.8	43	17.0	45	17.4
TOTALS	193	100	205	100	192	100	253	100	258	100

SOURCE: Graduated Student Data Files

TABLE 40
CHARACTERISTICS OF GRADUATED STUDENTS
1989-90

COLLEGE OF ARTS & SCIENCES

		BLACK N	WHITE N	OTHER N	TOTAL N
<u>DEGREE</u> BACHELORS	<u>SEX</u> MALE	97	15	2	114
	FEMALE	187	13	3	203
MASTERS	MALE	14	5	0	19
	FEMALE	25	7	1	33
SUMMARY		323	40	6	369

SCHOOL OF BUSINESS

		BLACK N	WHITE N	OTHER N	TOTAL N
<u>DEGREE</u> BACHELORS	<u>SEX</u> Male	21	4	0	25
	Female	63	2	0	65
MASTERS	Male	1	1	0	2
	Female	0	1	1	2
SUMMARY		85	8	1	94

SCHOOL OF EDUCATION

		BLACK N	WHITE N	OTHER N	TOTAL N
<u>DEGREE</u> BACHELORS	<u>SEX</u> MALE	1	2	0	3
	FEMALE	27	7	0	34
MASTERS	MALE	14	12	0	26
	FEMALE	42	27	1	70
SUMMARY		84	48	1	133

SCHOOL OF LAW

		BLACK N	WHITE N	OTHER N	TOTAL N
<u>DEGREE</u> PROFESSIONAL	<u>SEX</u> MALE	11	14	0	25
	FEMALE	20	16	0	36
SUMMARY		31	30	0	61

SCHOOL OF LIBRARY & INFORMATION SCIENCES

		BLACK N	WHITE N	OTHER N	TOTAL N
<u>DEGREE</u> MASTERS	<u>SEX</u> MALE	1	3	2	6
	FEMALE	7	29	3	39
SUMMARY		8	32	5	45

Source: Graduated Student Data File, 1990

TABLE 41
STUDENT FINANCIAL AID*
1989 - 90

	NUMBER	AVERAGE AWARD	TOTAL AMOUNT
SCHOLARSHIPS, GRANTS AND AWARDS			
UNDERGRADUATE			
Non-Athletic	1,058	828.43	876,478
Athletic	110	3,168.79	348,567
SEOG (1)	770	970.44	747,240
Pell (2)	1,736	1,377.61	2,391,533
Vocational Rehabilitation	20	852.85	17,057
Veterans Benefits	37	2182.68	80,759
GRADUATE AND PROFESSIONAL			
Assistance to Professional Students (Law)	357	765.43	273,259
Fellowships, Traineeships, Grants & Scholarships (Graduate)	169	1,004.14	169,700
Assistantships (Graduate)	59	2,636.44	155,550
Vocational Rehabilitation	19	1,131.21	21,493
Veterans Benefits	12	3,175.00	38,100
STUDENT EMPLOYMENT			
UNDERGRADUATE			
College Work-Study	535	678.00	362,730
Other Student Employment	27	853.63	23,048
GRADUATE AND PROFESSIONAL			
College Work-Study	19	1,433.95	27,245
Other Student Employment	61	2,346.31	143,125
STUDENT LOANS			
UNDERGRADUATE			
Out-of-State Stafford/PLUS/SLS	350	1,952.02	683,208
Perkins	631	1,440.42	908,902

(1) Supplemental Education Opportunity Grant
(2) Entitlement Grant

*Undergraduate scholarships from external sources are not included.

SOURCE: NCHED A-10 Student Financial Aid Summary, Fall, 1990

TABLE 42
 FINANCIAL AID AWARDS
 FISCAL YEAR 1986-87 to 1989-90

	1986-1987	1987-1988	1988-1989	1989-1990
TOTAL NUMBER OF AID APPLICANTS	5575	4473	4265	2959
APPLICANTS WHO ACTUALLY ENROLLED	4504	3930	3625	2634
NUMBER OF AWARDS AND LOANS	7456	7597	6877	7261
UNDUPLICATED NUMBER OF AID RECIPIENTS	2815	3433	3360	2325
% OF ALL ENROLLED STUDENTS RECEIVING AID	44.9	55.6	53.7	36.9
DOLLAR AMOUNT OF AWARDS AND LOANS	\$9,165,086	\$9,411,867	\$9,750,636	\$11,378,127
MEAN AWARD	\$1,229	\$1,239	\$1,418	\$1,567
MEAN AWARD PER RECIPIENT	\$3,256	\$2,742	\$2,902	\$4,894

SOURCE: OCR 16KB3 Financial Assistance to Student Institutions, Fall 1990

FACTS ABOUT FACULTY AND STAFF

LIST OF TABLES AND FIGURES

Table 43:	Instructional Staffing Patterns by Department and Rank 1986-1990	81
Table 44:	Tenure for Full-Time Faculty by Department, Fall 1990	86
Table 45:	Tenure for Full-Time Faculty by Rank and Sex 1986-1990	87
Figure 10:	Ten-Year Change of Rank and Tenure Status for Full-Time Faculty 1980 and 1990	88
Table 46:	Highest Earned Degree for Full-Time Faculty by Department, Fall 1990	89
Table 47:	Summary of Highest Earned Degree for Full-Time Faculty 1985-1990	90
Table 48:	Race and Sex of Full-Time Faculty by Department and Academic Rank, Fall 1990	91
Table 49:	Mean Salaries of Full-Time Instructional Faculty by Rank 1970-1990	96
Table 50:	Mean Salaries of Full-Time Instructional Professors by Race and Sex 1980-1990	97
Table 51:	Mean Salaries of Full-Time Instructional Associate Professors by Race and Sex 1980-1990	97
Table 52:	Mean Salaries of Full-Time Instructional Assistant Professors by Race and Sex 1980-1990	98
Table 53:	Mean Salaries of Full-Time Instructors by Race and Sex 1980-1990	98
Table 54:	Summary of Mean Salaries of Full-Time Instructional Faculty by Academic Rank, Race, and Sex, Fall 1990	99
Table 55:	Full-Time EPA and SPA Employees by Occupational Activity Category, Race, and Sex, Fall 1990	100
Table 56:	New Full-Time EPA and SPA Employees by Occupational Activity Category, Race, and Sex, Fall 1990	101
Table 57:	Retirements, Resignations, and Dismissals of Full-Time EPA and SPA Employees, Fall 1990	102
Table 58:	Promotions of Full-Time EPA and SPA Employees, Fall 1990	103
Table 59:	Summary of Mean Salaries of Full-Time Employees by Occupational Activity Category, Race, and Sex, Fall 1990	104

TABLE 43

INSTRUCTIONAL STAFFING PATTERNS
BY DEPARTMENT AND RANK 1986-1990

DEPARTMENT AND ACADEMIC RANK	1986	1987	1988	1989	1990		TOTAL	FTE
					FULL-TIME	PART-TIME		
Art								
Professor		1	1	1	1		1	1.0
Associate Professor	4	4	4	4	3	1	4	3.5
Assistant Professor	2	1	1	1	1		1	1.0
Instructor	2							
Lecturer	3	1	1					
Adjunct or Visiting		6	6	9		5	5	1.9
Total	11	13	13	15	5	6	11	7.4
Biology								
Professor	3	3	3	3	3		3	3.0
Associate Professor	7	6	6	6	7		7	7.0
Assistant Professor	2				1		1	1.0
Instructor								
Lecturer	3	1	1	1				
Adjunct or Visiting	1	10	10	11	1	5	6	3.4
Total	16	20	20	21	12	5	17	14.4
Business								
Professor	2	4	4	4	4		4	4.0
Associate Professor	10	10	10	12	10		10	10.0
Assistant Professor	18	14	14	12	15		15	15.0
Instructor	1	3	3	2	3		3	3.0
Lecturer	4	1	1	1				
Adjunct or Visiting		5	5	14	2	12	14	4.8
Total	35	37	37	45	34	12	46	36.8
Chemistry								
Professor	3	3	3	2	3		3	3.0
Associate Professor	1	1	1	1	1		1	1.0
Assistant Professor	1	1	1	1	1		1	1.0
Instructor								
Lecturer	2							
Adjunct or Visiting		3	3	5		3	3	0.9
Total	7	8	8	9	5	3	8	5.9
Dramatic Art								
Professor	1	1	1	1	1		1	1.0
Associate Professor	1	2	2	2	4		4	4.0
Assistant Professor	2	2	2	2				
Instructor								
Lecturer	2							
Adjunct or Visiting		2	2	2		1	1	0.1
Total	6	7	7	7	5	1	6	5.1

TABLE 43
(continued)

INSTRUCTIONAL STAFFING PATTERNS
BY DEPARTMENT AND RANK 1986-1990

DEPARTMENT AND ACADEMIC RANK	1986	1987	1988	1989	1990			FTE
					FULL-TIME	PART-TIME	TOTAL	
Education								
Professor	9	10	10	8	6	1	7	6.1
Associate Professor	8	6	6	5	5		5	5.0
Assistant Professor	7	4	4	5	7		7	7.0
Instructor		2	2			1	1	0.8
Lecturer	2							
Adjunct or Visiting	1	15	15	17	2	17	19	5.0
Total	27	37	37	35	20	19	39	23.9
English								
Professor	4	4	4	4	4		4	4.0
Associate Professor	6	6	6	6	5		5	5.0
Assistant Professor	8	9	9	9	7		7	7.0
Instructor		4	4	3	3		3	3.0
Lecturer	1							
Adjunct or Visiting	1	9	9	5	2	9	11	4.8
Total	20	32	32	27	21	9	30	23.8
Geography								
Professor	1	1	1	1	1		1	1.0
Associate Professor	3	3	3	2	3		3	3.0
Assistant Professor	1	1	1	1	1		1	1.0
Instructor								
Lecturer	2	1	1					
Adjunct or Visiting				2		2	2	1.2
Total	7	6	6	6	5	2	7	6.2
Health Education								
Professor	1							
Associate Professor	1	1	1	1		1	1	0.6
Assistant Professor	1		1	1	1		1	1.0
Instructor	2	2	2	2	2		2	2.0
Lecturer	1							
Adjunct or Visiting		6	6	13		4	4	1.5
Total	6	9	10	17	3	5	8	5.1
History/Social Science								
Professor	5	5	5	5	4	1	5	4.4
Associate Professor	2							
Assistant Professor	4	4	4	4	5		5	5.0
Instructor								
Lecturer	1							
Adjunct or Visiting		3	3	7		3	3	1.1
Total	12	12	12	16	9	3	12	10.5

TABLE 43
(continued)

INSTRUCTIONAL STAFFING PATTERNS
BY DEPARTMENT AND RANK 1986-1990

DEPARTMENT AND ACADEMIC RANK	1986	1987	1988	1989	1990		TOTAL	FTE
					FULL-TIME	PART-TIME		
Home Economics								
Professor								
Associate Professor	3	3	3	3	3		3	3.0
Assistant Professor	5	4	4	4	4		4	4.0
Instructor	1		1	2	2		2	2.0
Lecturer	2							
Adjunct or Visiting		5	5	9		5	5	1.7
Total	11	12	13	18	9	5	14	10.7
Law								
Professor	7	6	6	7	7		7	7.0
Associate Professor	3	4	4	6	5		5	5.0
Assistant Professor	3	3	3	2	1		1	1.0
Instructor	1							
Lecturer	3	1	1	1				
Adjunct or Visiting	6	8	8	8	3	9	12	4.1
Total	23	22	22	24	16	9	25	17.1
Library & Information Sciences								
Professor	2	2	2	2	2		2	2.0
Associate Professor	1	2	2	3	3		3	3.0
Assistant Professor	3	1	1		1		1	1.0
Instructor		1	1	1				
Lecturer	4							
Adjunct or Visiting	1	6	6	5	2	1	3	2.1
Total	11	12	12	11	8	1	9	8.1
Mathematics & Computer Science								
Professor	1	1	1		1		1	1.0
Associate Professor	5	5	5	5	4	1	5	4.5
Assistant Professor	3	3	3	5	5		5	5.0
Instructor	4	3	3	2	1	1	2	1.8
Lecturer	3							
Adjunct or Visiting	1	12	12	13	2	6	8	4.2
Total	17	24	24	25	13	8	21	16.5
Modern Foreign Languages								
Professor	1	1	1	1	1		1	1.0
Associate Professor	3	4	4	4	3		3	3.0
Assistant Professor	4	3	3	3	3		3	3.0
Instructor								
Lecturer	2	1	1					
Adjunct or Visiting	1	2	2	4	1	4	5	2.9
Total	11	11	11	12	8	4	12	9.9

TABLE 43
(continued)

INSTRUCTIONAL STAFFING PATTERNS
BY DEPARTMENT AND RANK 1986-1990

DEPARTMENT AND ACADEMIC RANK	1986	1987	1988	1989	1990		TOTAL	FTE
					FULL-TIME	PART-TIME		
Music								
Professor	2	1	1	1	2		2	2.0
Associate Professor	3	3	3	3	2		2	2.0
Assistant Professor	3	3	3	3	1		1	1.0
Instructor	1							
Lecturer	3		1	1		1	1	0.8
Adjunct or Visiting		3	3	4	1	4	5	4.5
Total	12	10	11	12	6	5	11	10.3
Nursing								
Professor			1	1	1		1	1.0
Associate Professor	3	1	1	2	1		1	1.0
Assistant Professor	10	6	6	5	5		5	5.0
Instructor		1	1	1				
Lecturer	8							
Adjunct or Visiting	1	7	7	7	2	7	9	3.3
Total	22	15	16	16	9	7	16	10.3
Philosophy								
Professor								
Associate Professor	1	1	1	1	1		1	1.0
Assistant Professor	1	1	1	1	1		1	1.0
Instructor								
Lecturer								
Adjunct or Visiting								
Total	2	2	2	2	2		2	2.0
Physical Education								
Professor	1							
Associate Professor	4	5	5	4	4		4	4.0
Assistant Professor	9	7	7	8	8		8	8.0
Instructor	2	3	3	2	1		1	1.0
Lecturer	1							
Adjunct or Visiting	1	4	4	4	2	2	4	3.3
Total	18	19	19	18	15	2	17	16.3
Physics								
Professor	3	4	4	4	4		4	4.0
Associate Professor								
Assistant Professor								
Instructor								
Lecturer	2							
Adjunct or Visiting	1	1	1	1	2		2	2.0
Total	6	5	5	5	6		6	6.0

TABLE 43
(continued)

INSTRUCTIONAL STAFFING PATTERNS
BY DEPARTMENT AND RANK 1986-1990

DEPARTMENT AND ACADEMIC RANK	1986	1987	1988	1989	1990		TOTAL	FTE
					FULL-TIME	PART-TIME		
Political Science								
Professor	2	4	4	4	4		4	4.0
Associate Professor	4	2	2	2	2		2	2.0
Assistant Professor	7	5	5	5	5		5	5.0
Instructor	1	1	1	1				
Lecturer	6	1	1					
Adjunct or Visiting		12	12	20	2	8	10	4.4
Total	20	25	25	32	13	8	21	15.4
Psychology								
Professor	1	1	1	1	1		1	1.0
Associate Professor	2	1	1	2	2		2	2.0
Assistant Professor	3	2	2	2	2		2	2.0
Instructor								
Lecturer								
Adjunct or Visiting		8	8	7	1		1	1.0
Total	6	12	12	12	6		6	6.0
Sociology								
Professor	2	2	2	2	2		2	2.0
Associate Professor	3	2	2	2	2		2	2.0
Assistant Professor	2	3	3	3	4		4	4.0
Instructor								
Lecturer	1							
Adjunct or Visiting		3	3	3				
Total	8	10	10	10	8		8	8.0
SUMMARY BY RANK AND YEAR								
Professor	51	55	55	52	52	2	54	52.1
Associate Professor	78	72	72	76	70	3	73	71.6
Assistant Professor	99	78	78	77	79		79	79.0
Instructor	26	21	21	16	12	2	14	13.5
Lecturer	60	8	8	4		1	1	0.8
Adjunct or Visiting	20	130	130	170	25	107	132	58.2
GRAND TOTAL BY ACADEMIC YEAR	334	364	364	395	238	115	353	275.2

SOURCE: PERSONNEL DATA FILES

TABLE 44

TENURE FOR FULL-TIME FACULTY BY DEPARTMENT,
FALL 1990

DEPARTMENT	TENURE		ON TENURE TRACK		NOT ON TRACK		TOTAL
		%		%		%	
Art	4	80.0	1	20.0		0.0	5
Biology	8	66.7	3	25.0	1	8.3	12
Business	19	55.9	11	32.4	4	11.8	34
Chemistry	5	100.0					5
Dramatic Art	5	100.0		0.0			5
Education	12	60.0	6	30.0	2	10.0	20
English	14	66.7	2	9.5	5	23.8	21
Geography	5	100.0					5
Health Education	2	66.7	1	33.3			3
History/Social Science	5	55.6	3	33.3	1	11.1	9
Home Economics	5	55.6	4	44.4		0.0	9
Law	10	62.5	3	18.8	3	18.8	16
Library & Information Sciences	5	62.5	1	12.5	2	25.0	8
Mathematics & Computer Science	9	69.2	1	7.7	3	23.1	13
Modern Foreign Languages	7	87.5			1	12.5	8
Music	5	83.3		0.0	1		6
Nursing	4	44.4	3	33.3	2	22.2	9
Philosophy	2	100.0					2
Physical Education	10	66.7	3	20.0	2	13.3	15
Physics	4	66.7			2	33.3	6
Political Science	8	61.5	3	23.1	2	15.4	13
Psychology	2	33.3	3	50.0	1		6
Sociology	3	37.5	5	62.5			8
SUMMARY	153	64.3	53	22.3	32	13.4	238

NOTE: Data included in this table are for instructional faculty only.
Those on leave are omitted.

SOURCE: Personnel Data File, Fall 1990

TABLE 45
TENURE FOR FULL-TIME FACULTY BY RANK AND SEX
1986-1990

YEAR & ACADEMIC RANK	MEN			WOMEN			TOTAL		
	TOTAL	N	%	TOTAL	N	%	GRAND TOTAL	N	%
1986									
Professor	39	36	92.3	12	12	100.0	51	48	94.1
Associate Professor	52	38	73.1	26	20	76.9	78	58	74.4
Assistant Professor	54	23	42.6	45	14	31.1	99	37	37.4
Instructor	6	2	33.3	13	4	30.8	19	6	31.6
Lecturer	6			4			10		
Other Faculty	3			16			19		
Total	160	99	61.9	116	50	43.1	276	149	54.0
1987									
Professor	38	37	97.4	10	10	100.0	48	47	97.9
Associate Professor	51	39	76.5	26	21	80.8	77	60	77.9
Assistant Professor	49	23	46.9	39	12	30.8	88	35	39.8
Instructor	6	2	33.3	12	3	25.0	18	5	27.8
Lecturer	4			4			8		
Other Faculty	14			9			23		
Total	162	101	62.3	100	46	46.0	262	147	56.1
1988									
Professor	42	41	97.6	10	9	90.0	52	50	96.2
Associate Professor	45	35	77.8	24	17	70.8	69	52	75.4
Assistant Professor	45	19	42.2	29	13	44.8	74	32	43.2
Instructor	6	2	33.3	13	3	23.1	19	5	26.3
Lecturer	3			1			4		
Other Faculty	9			11			20		
Total	150	97	64.7	88	42	47.7	238	139	58.4
1989									
Professor	38	38	100.0	11	10	90.9	49	48	98.0
Associate	47	36	76.6	25	20	80.0	72	56	77.8
Assistant	44	20	45.5	29	17	58.6	73	37	50.7
Instructor	5	2	40.0	8	2	25.0	13	4	30.8
Lecturer									
Other Faculty	12			7			19		
Total	146	96	65.8	80	49	61.3	226	145	64.2
1990									
Professor	40	40	100.0	12	12	100.0	52	52	100.0
Associate	48	39	81.3	22	20	90.9	70	59	84.3
Assistant	49	22	44.9	30	16	53.3	79	38	48.1
Instructor	3	2	66.7	9	2	22.2	12	4	33.3
Lecturer									
Other Faculty	10			15			25		
Total	150	103	68.7	88	50	56.8	238	153	64.3

SOURCE: Personnel Data Files

FIGURE 10

TEN-YEAR CHANGE OF RANK AND
TENURE STATUS FOR FULL-TIME FACULTY
1980 AND 1990

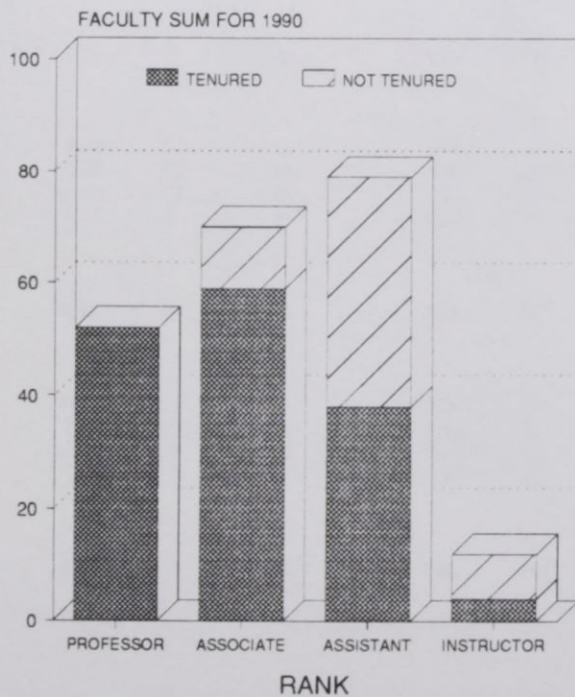
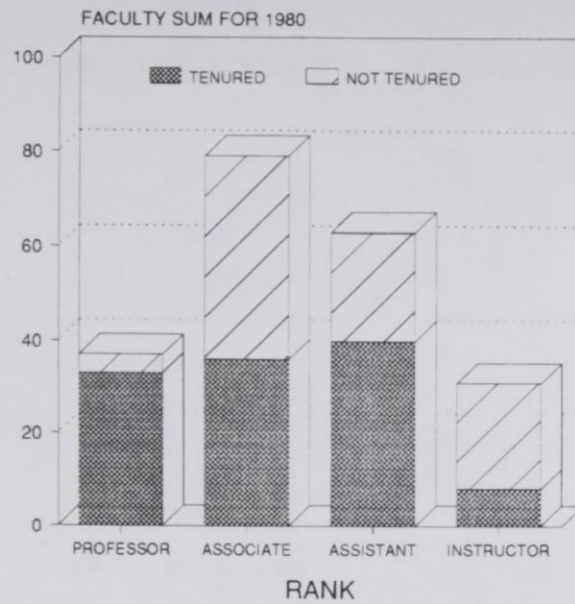


TABLE 46

HIGHEST EARNED DEGREE FOR FULL-TIME FACULTY BY DEPARTMENT, FALL 1990

Department & Degrees	Number	Department & Degrees	Number	Department & Degrees	Number
Art		Health Education		Nursing	
Doctor's	1	Doctor's	1	Doctor's	4
Master's	4	Master's	2	Master's	5
Professional		Professional		Professional	
Bachelor's		Bachelor's		Bachelor's	
Biology		History/Social Science		Philosophy	
Doctor's	11	Doctor's	6	Doctor's	1
Master's	1	Master's	3	Master's	
Professional		Professional		Professional	
Bachelor's		Bachelor's		Bachelor's	1
Business		Home Economics		Physical Education	
Doctor's	23	Doctor's	5	Doctor's	7
Master's	9	Master's	4	Master's	8
Professional	1	Professional		Professional	
Bachelor's	1	Bachelor's		Bachelor's	
Chemistry		Law		Physics	
Doctor's	4	Doctor's		Doctor's	6
Master's	1	Master's	5	Master's	
Professional		Professional	11	Professional	
Bachelor's		Bachelor's		Bachelor's	
Dramatic Art		Library & Information Sci.		Political Science	
Doctor's	3	Doctor's	6	Doctor's	11
Master's	2	Master's	2	Master's	1
Professional		Professional		Professional	1
Bachelor's		Bachelor's		Bachelor's	
Education		Mathematics & Computer Sci.		Psychology	
Doctor's	18	Doctor's	7	Doctor's	6
Master's	2	Master's	6	Master's	
Professional		Professional		Professional	
Bachelor's		Bachelor's		Bachelor's	
English		Modern Foreign Languages		Sociology	
Doctor's	12	Doctor's	5	Doctor's	8
Master's	9	Master's	3	Master's	
Professional		Professional		Professional	
Bachelor's		Bachelor's		Bachelor's	
Geography		Music			
Doctor's	5	Doctor's	4		
Master's		Master's	2		
Professional		Professional			
Bachelor's		Bachelor's			

SOURCE: Personnel Data File, Fall 1990

TABLE 47

SUMMARY OF HIGHEST EARNED DEGREE FOR
FULL-TIME FACULTY 1985-1990

DEGREE	1985 N	1986 N	1987 N	1988 N	1989 N	1990 N
Doctor's	168 53.3%	159 57.6%	153 58.4%	147 61.8%	146 65.0%	154 64.7%
Master's	110 34.9%	87 31.5%	87 33.2%	76 31.9%	67 29.6%	69 29.0%
Bachelor's	13 4.1%	8 2.9%	2 0.8%	3 1.3%	1 0.4%	2 0.8%
Professional	24 7.6%	21 7.6%	18 6.9%	12 5.0%	12 5.3%	13 5.5%
Other		1 0.4%	2 0.8%			
TOTAL	315	276	262	238	226	238

SOURCE: Personnel Data Files

TABLE 48

RACE AND SEX OF FULL-TIME FACULTY BY
DEPARTMENT AND ACADEMIC RANK, FALL 1990

DEPARTMENT & ACADEMIC RANK	BLACK		WHITE		OTHER		TOTAL
	MEN	WOMEN	MEN	WOMEN	MEN	WOMEN	
ART							
Professor			1				1
Associate Professor	2			1			3
Assistant Professor		1					1
Instructor							
Lecturer							
Adjunct or Visiting							
TOTAL	2	1	1	1			5
BIOLOGY							
Professor	2			1			3
Associate Professor	4		2		1		7
Assistant Professor		1					1
Instructor							
Lecturer							
Adjunct or Visiting			1				1
TOTAL	6	1	3	1	1		12
BUSINESS							
Professor	1		2		1		4
Associate Professor	4	2	4				10
Assistant Professor	9	1	2	1	2		15
Instructor	1	1		1			3
Lecturer							
Adjunct or Visiting	1	1					2
TOTAL	16	5	8	2	3		34
CHEMISTRY							
Professor	1		2				3
Associate Professor					1		1
Assistant Professor	1						1
Instructor							
Lecturer							
Adjunct or Visiting							
TOTAL	2		2		1		5
DRAMATIC ART							
Professor			1				1
Associate Professor	1	2		1			4
Assistant Professor							
Instructor							
Lecturer							
Adjunct or Visiting							
TOTAL	1	2	1	1			5

TABLE 48
(continued)

RACE AND SEX OF FULL-TIME FACULTY BY
DEPARTMENT AND ACADEMIC RANK, FALL 1990

DEPARTMENT & ACADEMIC RANK	BLACK		WHITE		OTHER		TOTAL
	MEN	WOMEN	MEN	WOMEN	MEN	WOMEN	
EDUCATION							
Professor		1	3	1	1		6
Associate Professor	1	2	1	1			5
Assistant Professor	1	4	2				7
Instructor							
Lecturer							
Adjunct or Visiting		2					2
TOTAL	2	9	6	2	1		20
ENGLISH							
Professor		1	1	2			4
Associate Professor	1	2		2			5
Assistant Professor	3	2	1			1	7
Instructor		1		2			3
Lecturer							
Adjunct or Visiting		2					2
TOTAL	4	8	2	6		1	21
GEOGRAPHY							
Professor	1						1
Associate Professor	2		1				3
Assistant Professor	1						1
Instructor							
Lecturer							
Adjunct or Visiting							
TOTAL	4		1				5
HEALTH EDUCATION							
Professor							
Associate Professor							
Assistant Professor	1						1
Instructor		2					2
Lecturer							
Adjunct or Visiting							
TOTAL	1	2					3
HISTORY/SOCIAL SCIENCE							
Professor	3	1					4
Associate Professor							
Assistant Professor	4	1					5
Instructor							
Lecturer							
Adjunct or Visiting							
TOTAL	7	2					9

TABLE 48
(continued)

RACE AND SEX OF FULL-TIME FACULTY BY
DEPARTMENT AND ACADEMIC RANK, FALL 1990

DEPARTMENT & ACADEMIC RANK	BLACK		WHITE		OTHER		TOTAL
	MEN	WOMEN	MEN	WOMEN	MEN	WOMEN	
HOME ECONOMICS							
Professor							3
Associate Professor	1	2					4
Assistant Professor	1	3					2
Instructor		2					
Lecturer							
Adjunct or Visiting							
TOTAL	2	7					9
LAW							
Professor	2		2	3			7
Associate Professor	4		1				5
Assistant Professor			1				1
Instructor							
Lecturer							
Adjunct or Visiting		3					3
TOTAL	6	3	4	3			16
LIBRARY & INFORMATION SCIENCES							
Professor	1		1				2
Associate Professor		2	1				3
Assistant Professor			1				1
Instructor							
Lecturer							
Adjunct or Visiting		1	1				2
TOTAL	1	3	4				8
MATHEMATICS & COMPUTER SCIENCE							
Professor	1						1
Associate Professor	1		3				4
Assistant Professor	2		2	1			5
Instructor	1						1
Lecturer							
Adjunct or Visiting	1	1					2
TOTAL	6	1	5	1			13
MODERN FOREIGN LANGUAGES							
Professor	1						1
Associate Professor			1	1	1		3
Assistant Professor			1	2			3
Instructor							
Lecturer							
Adjunct or Visiting				1			1
TOTAL	1		2	4	1		8

TABLE 48
(continued)

RACE AND SEX OF FULL-TIME FACULTY BY
DEPARTMENT AND ACADEMIC RANK, FALL 1990

DEPARTMENT & ACADEMIC RANK	BLACK		WHITE		OTHER		TOTAL
	MEN	WOMEN	MEN	WOMEN	MEN	WOMEN	
MUSIC							
Professor	1			1			2
Associate Professor		1	1				2
Assistant Professor		1					1
Instructor							
Lecturer							
Adjunct or Visiting	1						1
TOTAL	2	2	1	1			6
NURSING							
Professor		1					1
Associate Professor		1					1
Assistant Professor		5					5
Instructor							
Lecturer							
Adjunct or Visiting		1		1			2
TOTAL		8		1			9
PHILOSOPHY							
Professor							
Associate Professor			1				1
Assistant Professor			1				1
Instructor							
Lecturer							
Adjunct or Visiting							
TOTAL			2				2
PHYSICAL EDUCATION							
Professor							
Associate Professor	3			1			4
Assistant Professor	4	3		1			8
Instructor	1						1
Lecturer							
Adjunct or Visiting	1	1					2
TOTAL	9	4		2			15
PHYSICS							
Professor			3		1		4
Associate Professor							
Assistant Professor							
Instructor							
Lecturer							
Adjunct or Visiting				1	1		2
TOTAL			3	1	2		6

TABLE 48
(continued)

RACE AND SEX OF FULL-TIME FACULTY BY
DEPARTMENT AND ACADEMIC RANK, FALL 1990

DEPARTMENT & ACADEMIC RANK	BLACK		WHITE		OTHER		TOTAL
	MEN	WOMEN	MEN	WOMEN	MEN	WOMEN	
POLITICAL SCIENCE							
Professor	1		2		1		4
Associate Professor	1		1				2
Assistant Professor	3	1	1				5
Instructor							
Lecturer							
Adjunct or Visiting	1		1				2
TOTAL	6	1	5		1		13
PSYCHOLOGY							
Professor	1						1
Associate Professor	1	1					2
Assistant Professor	2						2
Instructor							
Lecturer							
Adjunct or Visiting			1				1
TOTAL	4	1	1				6
SOCIOLOGY							
Professor	1		1				2
Associate Professor	1		1				2
Assistant Professor	2	1	1				4
Instructor							
Lecturer							
Adjunct or Visiting							
TOTAL	4	1	3				8

SUMMARY OF RACE AND SEX BY ACADEMIC RANK
FOR FULL-TIME FACULTY, FALL 1990

ACADEMIC RANK	BLACK		WHITE		OTHER		TOTAL MEN	TOTAL WOMEN	TOTAL
	MEN	WOMEN	MEN	WOMEN	MEN	WOMEN			
Professor	17	4	19	8	4	—	40	12	52
Associate Professor	27	15	18	7	3	—	48	22	70
Assistant Professor	34	24	13	5	2	1	49	30	79
Instructor	3	6	—	3	—	—	3	9	12
Lecturer	—	—	—	—	—	—	—	—	—
Adjunct or Visiting	5	12	4	3	1	—	10	15	25
TOTAL	86	61	54	26	10	1	150	88	238

SOURCE: Personnel Data File, Fall 1990

TABLE 49

MEAN SALARIES OF FULL-TIME INSTRUCTIONAL FACULTY BY RANK*
1970-1990

YEAR	PROFESSOR	ASSOCIATE PROFESSOR	ASSISTANT PROFESSOR	INSTRUCTOR
1970	\$15,952	\$13,326	\$10,222	\$8,045
1971	16,663	13,387	10,878	9,078
1972	17,588	14,321	11,248	9,698
1973	18,306	14,842	11,855	9,734
1974	19,353	16,150	13,012	10,950
1975	19,187	15,600	12,937	10,922
1976	20,777	17,069	14,073	11,928
1977	22,641	18,222	15,057	12,790
1978	24,874	19,492	16,240	13,921
1979	26,956	20,656	17,305	14,199
1980	29,735	23,027	19,337	15,415
1981	30,514	24,411	20,718	17,825
1982	31,558	25,491	22,123	18,545
1983	34,236	26,671	23,442	19,455
1984	36,350	29,319	26,456	21,847
1985	40,917	32,022	28,451	22,144
1986	42,444	33,749	29,478	22,740
1987	44,122	35,680	30,900	25,679
1988	45,475	37,648	32,371	28,709
1989	48,100	40,052	33,662	29,862
1990	51,801	42,898	35,979	30,927

* Salary data adjusted to nine-month salary scales

SOURCE: Personnel Data Files

TABLE 50

MEAN SALARIES OF FULL-TIME INSTRUCTIONAL PROFESSORS*
BY RACE AND SEX 1980-1990

YEAR	BLACK		WHITE		OTHER	
	MEN	WOMEN	MEN	WOMEN	MEN	WOMEN
1980	30,879	31,545	28,834	28,059	29,539	
1981	32,066	31,019	30,257	27,988	29,287	
1982	32,505	32,370	31,742	29,387	30,961	
1983	36,163	33,975	33,737	32,367	31,620	
1984	36,533	35,147	37,284	35,775	36,205	
1985	41,373	38,867	42,113	40,182	37,482	
1986	43,176	37,461	43,890	42,423	39,341	
1987	45,177	41,379	45,223	42,209	41,326	
1988	49,331	44,150	43,986	48,331	43,652	
1989	49,150	45,900	46,770	52,520	45,805	
1990	52,933	49,545	50,534	55,136	48,600	

TABLE 51

MEAN SALARIES OF FULL-TIME INSTRUCTIONAL ASSOCIATE PROFESSORS*
BY RACE AND SEX 1980-1990

YEAR	BLACK		WHITE		OTHER	
	MEN	WOMEN	MEN	WOMEN	MEN	WOMEN
1980	24,039	21,832	23,667	22,157	19,856	23,229
1981	25,272	23,420	24,877	23,439	23,528	
1982	26,318	24,855	26,035	24,773	22,228	24,810
1983	27,762	26,746	26,843	24,517	25,583	25,705
1984	30,485	29,796	29,458	27,096	26,570	28,275
1985	33,399	32,489	31,814	29,638	29,483	32,603
1986	35,044	34,234	33,449	31,420	30,957	
1987	36,293	38,005	35,071	32,908	32,564	
1988	37,183	40,333	37,846	34,861	33,882	
1989	42,125	40,597	40,039	34,583	35,116	
1990	44,953	45,360	41,558	35,704	36,920	

* Salary data adjusted to nine-month salary scales

SOURCE: Personnel Data Files

TABLE 52

MEAN SALARIES OF FULL-TIME INSTRUCTIONAL ASSISTANT PROFESSORS*
BY RACE AND SEX 1980-1990

YEAR	BLACK		WHITE		OTHER	
	MEN	WOMEN	MEN	WOMEN	MEN	WOMEN
1980	19,999	19,379	18,940	17,455	18,480	
1981	21,383	20,456	20,142	19,820		
1982	22,546	21,874	22,489	21,133	21,924	24,045
1983	23,704	23,398	23,580	22,400	25,758	21,986
1984	26,813	26,098	26,608	24,292	32,390	27,578
1985	28,663	27,879	28,549	25,924	36,984	33,403
1986	29,089	28,842	31,618	27,515	39,166	35,074
1987	31,320	29,807	32,227	29,394	40,952	28,935
1988	32,545	31,970	33,085			30,264
1989	33,770	33,533	33,865	33,021		
1990	35,640	34,756	38,177	36,989	40,365	34,422

TABLE 53

MEAN SALARIES OF FULL-TIME INSTRUCTORS*
BY RACE AND SEX 1980-1990

YEAR	BLACK		WHITE		OTHER	
	MEN	WOMEN	MEN	WOMEN	MEN	WOMEN
1980	12,694	15,844	16,188	16,408		13,705
1981	17,115	17,664	20,221	19,101		
1982	17,821	18,662	17,236	19,941		15,860
1983	17,364	19,736	19,560	20,125		17,010
1984	20,541	22,659	20,252	22,063		18,711
1985	19,143	23,334	29,473	24,599		21,583
1986	19,482	23,980		29,262		22,123
1987	25,523	24,406	33,194	29,536		22,676
1988	27,283	27,261		31,818		20,663
1989	29,230	29,785		28,497		
1990	28,024	31,152		33,379		

* Salary data adjusted to nine-month salary scales

SOURCE: Personnel Data Files

TABLE 54

SUMMARY OF MEAN SALARIES OF FULL-TIME INSTRUCTIONAL FACULTY
BY ACADEMIC RANK, RACE, AND SEX, FALL 1990

ACADEMIC RANK		BLACK		WHITE		OTHER	
		MEN	WOMEN	MEN	WOMEN	MEN	WOMEN
Professor	N	17	4	19	8	4	
	MEAN	\$52,933	\$49,545	\$50,534	\$55,136	\$48,600	
Associate Professor	N	27	15	18	7	3	
	MEAN	44,953	45,360	41,558	35,704	36,920	
Assistant Professor	N	34	24	13	5	2	1
	MEAN	35,640	34,756	38,177	36,989	**	**
Instructor	N	3	6		3		
	MEAN	28,024	31,152		33,379		
Lecturer	N						
	MEAN						
Adjunct or Visiting	N	5	12	4	3	1	
	MEAN	34,735	33,581	30,355	25,935	**	

* Salary data adjusted to nine-month salary scales

** Salary means are omitted for cells with less than three persons.

SOURCE: Personnel Data File, Fall 1990

TABLE 55

FULL-TIME EPA AND SPA EMPLOYEES
BY OCCUPATIONAL ACTIVITY CATEGORY, RACE, AND SEX,
FALL 1990

OCCUPATIONAL ACTIVITY CATEGORY	BLACK		WHITE		OTHER		TOTAL	
	MEN	WOMEN	MEN	WOMEN	MEN	WOMEN	MEN	WOMEN
EXECUTIVE, ADMINISTRATIVE AND MANAGERIAL	29	22	5	2			34	24
Number of Persons Above with Academic Rank	13	5	2	1			15	6
Number of Persons Above with Tenure	11	4	2	1			13	5
INSTRUCTIONAL FACULTY (TENURED)	59	32	38	19	7	1	104	52
Professors	17	4	19	8	4		40	12
Associate Professors	23	15	14	7	3		40	22
Assistant Professors	17	11	5	4		1	22	16
Instructors	2	2					2	2
Lecturers								
INSTRUCTIONAL FACULTY (NOT TENURED BUT ON TRACK)	22	16	12	1	2		36	17
Professors								
Associate Professors	5	2	4				9	2
Assistant Professors	17	12	8	1	2		27	13
Instructors		2						2
Lecturers								
INSTRUCTIONAL FACULTY (NOT ON TENURE TRACK)	7	17		6	1		12	23
Professors								
Associate Professors								
Assistant Professors		1						1
Instructors	2	3		3			2	6
Lecturers								
Adjunct Faculty	5	13	4	3	1		10	16
PROFESSIONAL	23	47	2	3		1	25	51
SECRETARIAL AND CLERICAL	21	178	2	2		2	23	182
TECHNICAL AND PARAPROFESSIONAL	29	23	2				31	23
SKILLED CRAFTS	36	2	1				37	2
SERVICE AND MAINTENANCE	70	45		2			70	47
TOTAL	296	382	62	35	10	4	372	421

SOURCE: Personnel Data File, Fall 1990

TABLE 56

NEW FULL-TIME EPA AND SPA EMPLOYEES
BY OCCUPATIONAL ACTIVITY CATEGORY, RACE, AND SEX,
FALL 1990

OCCUPATIONAL ACTIVITY CATEGORY	BLACK		WHITE		OTHER		TOTAL	
	MEN	WOMEN	MEN	WOMEN	MEN	WOMEN	MEN	WOMEN
EXECUTIVE, ADMINISTRATIVE AND MANAGERIAL	2	1					2	1
Number of Persons Above with Academic Rank								
Number of Persons Above with Tenure								
INSTRUCTIONAL FACULTY (TENURED)								
Professors								
Associate Professors								
Assistant Professors								
Instructors								
Lecturers								
INSTRUCTIONAL FACULTY (NOT TENURED BUT ON TRACK)	2	3	2		1		5	3
Professors								
Associate Professors	1		1				2	
Assistant Professors	1	3	1		1		3	3
Instructors								
Lecturers								
INSTRUCTIONAL FACULTY (NOT ON TENURE TRACK)	1	2					1	2
Professors								
Associate Professors								
Assistant Professors								
Instructors	1						1	
Lecturers								
Adjunct Faculty		2						2
PROFESSIONAL	1	5		1			1	6
SECRETARIAL AND CLERICAL	6	16	1	1		1	7	18
TECHNICAL AND PARAPROFESSIONAL		2						2
SKILLED CRAFTS	3						3	
SERVICE AND MAINTENANCE	2	2					2	2
TOTAL	17	31	3	2	1	1	21	34

SOURCE: OCR 16K A1B New Employees in Institutions of Higher Education, Fall 1990

TABLE 57

RETIREMENTS, RESIGNATIONS, AND DISMISSALS
OF FULL-TIME EPA AND SPA EMPLOYEES,
FALL 1990

OCCUPATIONAL ACTIVITY CATEGORY	BLACK		WHITE		OTHER		TOTAL	
	MEN	WOMEN	MEN	WOMEN	MEN	WOMEN	MEN	WOMEN
EXECUTIVE, ADMINISTRATIVE AND MANAGERIAL								
Number of Persons Above with Academic Rank	1						1	
Number of Persons Above with Tenure	1						1	
INSTRUCTIONAL FACULTY (TENURED)								
Professors	2	2	3	2			5	4
Associate Professors			1				1	0
Assistant Professors	1	1	2	2			3	3
Instructors	1	1					1	
Lecturers								
INSTRUCTIONAL FACULTY (NOT TENURED BUT ON TRACK)								
Professors	2	2	1	1			3	3
Associate Professors		1					0	
Assistant Professors	2	1	1	1			3	2
Instructors								
Lecturers								
INSTRUCTIONAL FACULTY (NOT ON TENURE TRACK)								
Professors	3		1				4	0
Associate Professors								
Assistant Professors								
Instructors							0	
Lecturers							0	0
Adjunct Faculty	3		1				4	0
PROFESSIONAL	4	5		2		1	4	8
SECRETARIAL AND CLERICAL	6	38		1			6	39
TECHNICAL AND PARAPROFESSIONAL	10	10					10	10
SKILLED CRAFTS	1	3					1	3
SERVICE AND MAINTENANCE	26	15					26	15
TOTAL	55	75	5	6	0		60	82

Source: OCR 16K A3 Retirements, Resignations and Dismissals of Employees in Institutions of Higher Education, 1990

TABLE 58

PROMOTIONS OF FULL-TIME EPA AND SPA EMPLOYEES,
FALL 1990

OCCUPATIONAL ACTIVITY CATEGORY	BLACK		WHITE		OTHER		TOTAL	
	MEN	WOMEN	MEN	WOMEN	MEN	WOMEN	MEN	WOMEN
EXECUTIVE, ADMINISTRATIVE AND MANAGERIAL		2						2
Number of Persons Above with Academic Rank		1						1
Number of Persons Above with Tenure		1						
INSTRUCTIONAL FACULTY (TENURED)								
Professors	3	2		2			3	4
Associate Professors		1						1
Assistant Professors	3	1		2			3	3
Instructors								
Lecturers								
INSTRUCTIONAL FACULTY (NOT TENURED BUT ON TRACK)								
Professors	1	4	2				3	4
Associate Professors		1						1
Assistant Professors	1	3					1	3
Instructors			2					
Lecturers								
INSTRUCTIONAL FACULTY (NOT ON TENURE TRACK)								
Professors								
Associate Professors								
Assistant Professors								
Instructors								
Lecturers								
Adjunct Faculty								
PROFESSIONAL							1	
SECRETARIAL AND CLERICAL								
TECHNICAL AND PARAPROFESSIONAL								
SKILLED CRAFTS								
SERVICE AND MAINTENANCE								
TOTAL	5	8	2	2			7	10

SOURCE: OCR 16K A4 Promotions of Employees In Institutions of Higher Education, 1990

TABLE 59

SUMMARY OF MEAN SALARIES OF FULL-TIME EMPLOYEES
BY OCCUPATIONAL ACTIVITY CATEGORY, RACE, AND SEX,
FALL 1990

OCCUPATIONAL ACTIVITY CATEGORY		BLACK		WHITE		OTHER	
		MEN	WOMEN	MEN	WOMEN	MEN	WOMEN
Executive, Administrative, & Managerial	N	29	23	5	3		
	MEAN	\$51,625	\$47,809	\$49,570	\$47,521		
Professional	N	23	49	2	3		1
	MEAN	32,336	29,166	*	29,588		*
Technical & Paraprofessional	N	29	23	2			
	MEAN	23,006	21,440	*			
Secretarial & Clerical	N	21	178	2	2		2
	MEAN	18,290	20,290	*	*		*
Skilled Crafts	N	36	2	1			
	MEAN	21,963	*	*			
Service & Maintenance	N	70	45		2		
	MEAN	14,409	13,320		*		

* Salary means are omitted for cells with less than three persons.
Instructional faculty are excluded.

SOURCE: Personnel Data File, Fall 1990

APPENDIX

All data in FACTS are derived from analyses of, and reports from, the 1990 Graduated Student Data File, the 1990 Applied and Enrolled Student Data File, and the 1990 Personnel Date File except as indicated below:

HEGIS/IPEDS 2300-2.1	Degrees and Other Formal Awards Conferred, 1990
IPEDS F-1	Current Funds Expenditures and Transfers for Fiscal Year 1989-1990
IPEDS EF1	Residence of First-Time Students, Fall 1990
NCHED A-1.1	Resident Credit Enrollment
NCHED A-1.2	New Undergraduate Transfer Students, Fall 1990
NCHED A-1.3	Home Base of Students, Fall 1990
NCHED A-1.4	First-Time Freshmen Admissions, SAT Fall 1990 First-Time Freshmen High School Rank
NCHED A-1.6	Survey of Headcount by Age, Fall 1990
NCHED A-3	Student Tuition Fees, and Charges for the Academic Year, 1990-91 North Carolina Facilities Inventory and Utilization Reports - 1989 Credit Hour, Report Generated by REP from files prepared by Administrative Data Processing Grades, Report Generated by REP from files prepared by Administrative Data Processing
NCHED A-6	College and University Libraries, Fall 1990
NCHED A-7	Student Retention Reports, Fall 1990
NCHED A-10	Student Financial Aid Summary, Fall 1990
NCHED A-11	Report on Sources and Uses of University Funds, Fiscal Year 1989 - 1990

OCR 16K A1B	New Employees in Institutions of Higher Education, Fall 1990
OCR 16K A3	Retirements, Resignations and Dismissals of Employees in Institutions of Higher Education, 1990
OCR 16K A4	Promotions of Employees in Institutions of Higher Education, 1990
OCR 16K BC	Financial Assistance to Students in Institutions of Higher Education, Fall 1990
OCR 16KB-1	Applications, Acceptances, and Actual Enrollment, Fall 1990
OE Form 23-2.3	Fall Enrollment and Compliance Report of Institutions of Higher Education

Chronicle of Higher Education, Vol XXXVII No. 29, April 3, 1991