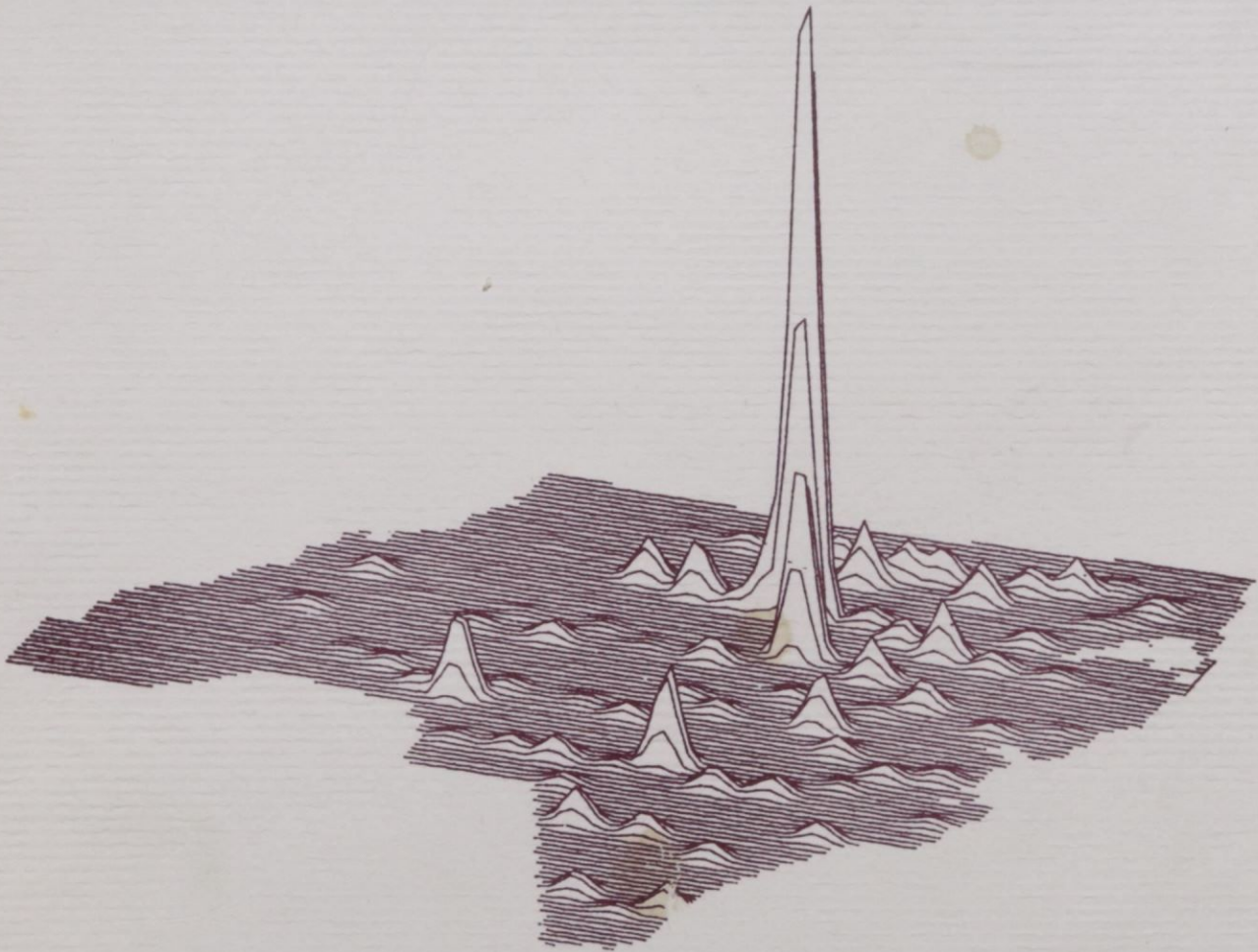


FACTS

1985 - 1986



North Carolina Central University

OFFICE OF
RESEARCH, EVALUATION AND PLANNING
DURHAM, NORTH CAROLINA

N.C.C.U. FACT BOOK 1985-86

NORTH CAROLINA CENTRAL UNIVERSITY

A CONSTITUENT INSTITUTION OF
THE UNIVERSITY OF NORTH CAROLINA

DURHAM, NORTH CAROLINA

FACTS

1985-86

BY

JAMES W. PIERCE
HELEN L. FAUCETTE

TECHNICAL ADVISORS

LINDA K. PRATT
KAREN M. GENTEMANN

OFFICE OF RESEARCH, EVALUATION, AND PLANNING

TABLE OF CONTENTS

	<u>Page</u>
<u>List of Tables and Figures</u>	ii
<u>Preface</u>	v
<u>Facts About the University</u>	
List of Tables	1
Purpose and History	2
Non-Discrimination Statement of Policy	5
High Priority Goals	6
Accreditation	8
Degree Programs and Program Tracks	9
Organizational Chart	14
University of North Carolina Board of Governors	15
University of North Carolina Officers of General Administration	16
North Carolina Central University Board of Trustees	19
North Carolina Central University Officers and Administrative Staff	20
<u>Facts About Students</u>	
List of Tables and Figures	31
<u>Facts About Faculty and Staff</u>	
List of Tables and Figures	61
<u>Appendix</u>	90

LIST OF TABLES AND FIGURES

		<u>Page</u>
Facts About the University		
TABLE	1: Characteristics of NCCU Facilities, Fall 1985	23
TABLE	2: Revenues, Expenditures for Fiscal Year, 1984-85	26
TABLE	3: Assets for Fiscal Year, 1984-85	27
FIGURE	1: Eight-Year Comparison of University Expenditures by Area	28
TABLE	4: Student Tuition, Fees and Charges for the 1985-86 Academic Year	29
TABLE	5: Library Collections and Expenditures, Fall 1985	30
Facts About Students		
TABLE	6: Number of Student Applications, Acceptances and Enrollees, Fall 1985	33
FIGURE	2: Seven-Year Comparison of Undergraduate Applicants, Acceptances and Enrollees	34
FIGURE	3: Seven-Year Comparison of Graduate and First Professional Applicants, Acceptances and Enrollees	35
TABLE	7: Mean SAT or ACT Scores of Entering Freshmen, 1969-1985	36
TABLE	8: High School Class Rank of Entering Freshmen, 1979-1985	37
TABLE	9: Undergraduate Transfers Into NCCU, 1972-1985	38
FIGURE	4: Entering Freshmen Planned Hours of Work Per Week	39
FIGURE	5: Entering Students Planned Occupations	40
TABLE	10: General Characteristics of Enrollment, 1983-1985	41
TABLE	11: Sex Distribution of Headcount Enrollment, 1985	42
TABLE	12: Racial Composition of Headcount Enrollment, 1976-1985	43
TABLE	13: Mean Age of Enrolled Students, 1975-1985	44
TABLE	14: Undergraduate Enrollment by Age, 1985	45
TABLE	15: Graduate and First Professional Enrollment by Age, 1985	46
TABLE	16: Geographic Origin of Students, 1971-1985	47
TABLE	17: Distribution of Students by State, Fall 1985	48
FIGURE	6: Geographic Origin by States, Undergraduate and Graduate Students, 1985	49

LIST OF TABLES AND FIGURES (Continued)

		<u>Page</u>
TABLE	18: Distribution of North Carolina Students by County, Fall 1985	50
FIGURE	7: Geographic Origin by Counties, Undergraduate and Graduate Students, 1985	51
TABLE	19: Students Enrolled, Graduated, Suspended, and Not Enrolled After Initial Entry Year	52
TABLE	20: First Time North Carolina Central University Freshmen Enrolled or Graduated	53
TABLE	21: First Time Freshmen in The University of North Carolina System Enrolled or Graduated	53
TABLE	22: Undergraduate Degrees Conferred by Field of Study, 1972-1985	54
TABLE	23: Graduate Degrees Conferred by Field of Study, 1972-1985	56
TABLE	24: Student Financial Aid, 1984-1985	57
TABLE	25: Financial Aid Awards, 1981-1985	58
TABLE	26: Credit Hours Generated by Department, Academic Years 1982-83 Through 1985-86	59

Facts About Faculty and Staff

TABLE	27: Instructional Staffing Patterns by Department and Rank, Fall 1977-1985	62
TABLE	28: Tenure for Full-Time Faculty by Department, Fall 1985	67
TABLE	29: Tenure for Full-Time Faculty by Rank and Sex, Fall 1981-1985	68
FIGURE	8: Ten-Year Change of Rank and Tenure Status Full-Time Faculty for 1975 and 1985	69
TABLE	30: Highest Earned Degree for Full-Time Faculty by Department, Fall 1985	70
TABLE	31: Summary of Highest Earned Degrees for Full-Time Faculty, 1973-1985	72
TABLE	32: Race and Sex of Full-Time Faculty by Department and Academic Rank, Fall 1985	73
TABLE	33: Summary of Race and Sex by Academic Rank for Full-Time Faculty, Fall 1985	78
TABLE	34: Mean Salaries by Rank, 1968-1985	79
TABLE	35: Mean Salaries of Professors by Race and Sex, 1974-1985	80
TABLE	36: Mean Salaries of Associate Professors by Race and Sex, 1974-1985	80
TABLE	37: Mean Salaries of Assistant Professors by Race and Sex, 1974-1985	81

FACTS ABOUT THE UNIVERSITY

LIST OF TABLES

		<u>Page</u>
TABLE	1: Characteristics of NCCU Facilities, Fall 1985	23
TABLE	2: Revenues and Expenditures for Fiscal Year, 1984-85	26
TABLE	3: Assets for Fiscal Year, 1984-85	27
FIGURE	1: Eight-Year Comparison of University Expenditures by Budget Area	28
TABLE	4: Student Tuition, Fees and Charges for the 1985-86 Academic Year	29
TABLE	5: Library Collections and Expenditures, Fall 1985	30

PURPOSE OF THE UNIVERSITY

North Carolina Central University offers undergraduate instruction in the arts and sciences and in business and education. In addition, it conducts a number of graduate programs leading to the master's degree in these areas. The University offers post-graduate, first-degree professional programs through its Schools of Law and Library Science.

The University's authority to offer instruction and to confer degrees derives from The University of North Carolina through its Board of Governors, under the legislation which created the unified University of North Carolina on October 30, 1971.

Through the undergraduate program (and to some extent through the graduate and professional programs) attention is directed to the achievement of the following:

1. Development of perspective and intellectual strength for the endeavors of a lifetime.
2. Acquaintance with our cultural heritage as a background for understanding and relating to the existing social order.
3. Provision of a climate for high-quality learning with special emphasis on education for knowledge and an intelligent, responsive participation in the home, the community, and a career.
4. A liberal education with a number of opportunities in specialized education so that students are prepared to pursue various professional careers with confidence and competence.
5. Recognition of the need for continuous learning throughout one's life in order to be effective, responsible citizens in a rapidly changing society.

HISTORY

North Carolina Central University, a state-supported liberal arts institution, was chartered in 1909 as a private institution and opened to students on July 10, 1910. It was founded by Dr. James E. Shepard. From the beginning, when it was known as the National Religious Training School and Chautauqua, its purpose has been the development in young men and women of the character and sound academic training requisite for real service to the nation. To this end, the training of all students has been entrusted to the most capable teachers available.

The institution's early years were characterized by a wealth of enthusiasm and high endeavor, but not of money. Private donations and student fees constituted the total financial support of the school, and the heavy burden of collecting funds rested on the President.

In 1915 the school was sold and reorganized, then becoming the National Training School. During this period of its history Mrs. Russell Sage of New York was a generous benefactor of the school.

In 1923 the General Assembly of North Carolina appropriated funds for the purchase and maintenance of the school; thus in that year it became a publicly-supported institution, and was renamed Durham State Normal School. Two years later the Legislature converted it into the North Carolina College for Negroes, dedicating it to the offering of liberal arts education and the preparation of teachers and principals of secondary schools.

At its 1927 session the General Assembly began a program of expansion of the college plant to conform to the needs of an enlarged academic program. The interest of the Honorable Angus W. McLean, then Governor of North Carolina, and his belief in the institution aided greatly in the promotion of this program. State appropriations were supplemented by a generous gift from B. N. Duke, and by contributions from citizens of Durham in 1929.

The College was accredited by the Southern Association of Colleges and Secondary Schools as an "A" class institution in 1937 and was admitted to membership in this association in 1957. It has since been approved by the Association of American Universities and the National Council for the Accreditation of Teacher Education and holds an "A" rating with the American Medical Association and the North Carolina State Department of Public Instruction.

The 1930's afforded federal grants and State appropriations for a new program of physical expansion and improvement of educational facilities; this program continued until the beginning of World War II.

The General Assembly of 1939 authorized the establishment of graduate work in liberal arts and the professions. Pursuant thereto graduate courses in the Arts and Sciences were first offered in that same year; the School of Law began operation in 1940, and the School of Library Science was established in 1941.

In 1947 the State Legislature changed the name of the institution to the North Carolina College at Durham.

On October 6, 1947, Dr. James E. Shepard, the founder and President of the college, died. The Board of Trustees appointed an interim committee consisting of Dr. Albert E. Manley, Dean of the College of Arts and Sciences; Miss Ruth G. Rush, Dean of Women; and Dr. Albert L. Turner, Dean of the School of Law, to administer the affairs of the institution until the election of the second president.

On January 20, 1948, Dr. Alfonso Elder was elected President of the institution. At the time of his election, Dr. Elder was serving as head of the Graduate Department of Education and had formerly been Dean of the College of Arts and Sciences. Dr. Elder retired September 1, 1963.

Dr. Samuel P. Massie was elected as the third President of the College on August 9, 1963 and assumed the office on September 1, 1963. Dr. Massie came to the institution from Washington, D. C., where he was Associate Program Director for Undergraduate Science Education of the National Science Foundation and Professor and Chairman of the Department of Pharmaceutical Chemistry at Howard University. He resigned on February 1, 1966.

The Board of Trustees appointed an interim committee consisting of William Jones, Business Manager; Dr. Helen G. Edmonds, Graduate Dean; and Dr. William H. Brown, Professor of Education, to administer the affairs of the institution until the fourth president took office.

On July 20, 1966, Dr. Albert N. Whiting was named fourth president of the institution. He came to North Carolina College from Baltimore, Maryland, where he had been Dean of Faculty of Morgan State College. Dr. Whiting served as President from July 1, 1967 until June 30, 1983.

In 1969, during Dr. Whiting's term of office, the State Legislature again changed the name of the institution to North Carolina Central University. On July 1, 1972, North Carolina Central University became a constituent institution of the University of North Carolina.

On July 1, 1983, Dr. LeRoy T. Walker, became Interim Chancellor of the University. He has also served the institution as Chairman of the Department of Physical Education and Recreation, Head Track Coach and Vice Chancellor for University Relations. At their February, 1986 meeting, the U.N.C. Board of Governors, on the request of the University's Board of Trustees, decreed that Dr. Walker was Chancellor of the University rather than Interim Chancellor and made that action retroactive to the beginning of his term. It was also announced that Dr. Tryonza R. Richmond, currently Dean of the School of Business, would succeed Dr. Walker as Chancellor effective July 1, 1986.

NON-DISCRIMINATION STATEMENT OF POLICY

NORTH CAROLINA CENTRAL UNIVERSITY is committed to equality of educational opportunity and does not discriminate against applicants, students, or employees based on race, color, national origin, religion, sex, age, or handicap. Moreover, NORTH CAROLINA CENTRAL UNIVERSITY is open to people of all races and actively seeks to promote racial integration by recruiting and enrolling a larger number of white students.

NORTH CAROLINA CENTRAL UNIVERSITY supports the protections available to members of its community under all applicable Federal laws, including Titles VI and VII of the Civil Rights Act of 1964, Title IX of the Education Amendments of 1972, Sections 799A and 845 of the Public Health Service Act, the Equal Pay and Age Discrimination Acts, the Rehabilitation Act of 1973, and Executive Order 11246. For information concerning these provisions, contact: Director of Affirmative Action, Room 201, Administration Building, North Carolina Central University, Durham, North Carolina 27707, Telephone 683-6254 or 683-6472.

HIGH PRIORITY GOALS
ACCORDING TO PROGRAM CLASSIFICATION STRUCTURE

I. INSTITUTIONAL ADMINISTRATION PROGRAM (6.0)

To assure the organizational effectiveness and continuity of NCCU by (1) providing for planning and executive direction, (2) providing for administrative and logistical services, (3) enhancing relationships with NCCU's constituencies, (4) providing services and conveniences for the employees and students of NCCU, and (5) recruiting, admitting and retaining students in the NCCU educational program by accomplishing the following objectives:

*1. Improving the enrollment management procedure including identifying prospective students, developing an effective marketing and recruiting strategy, admitting students with good chances of academic success and retaining those students to graduation.

*2. Improving and upgrading the administrative data processing service to provide timely and accurate information for use by the business offices, the Registrar's office, all offices working with student admissions, and the various academic units on the campus.

3. To acquire the resources necessary to support teaching, research, and learning, both directly through the administration's own efforts and indirectly through provision of information on funding sources and other matters to faculty and students.

II. INSTRUCTION PROGRAM (1.0)

To elicit, through an organized instructional program, some measure of education **progress** in students at NCCU. Educational **progress** includes (1) the acquisition of improved understanding of some portion of the body of knowledge, (2) the adoption of new or different attitudes and (3) the acquisition of increased mastery of a skill or set of skills by:

*4. Maintaining and improving access to computer training, equipment, software and technical support for students in all schools and academic disciplines.

III. STUDENT FINANCIAL SUPPORT PROGRAM (8.0)

To provide financial assistance to students in the form of outright grants, trainee stipends, and prizes awarded by and/or administered through NCCU.

IV. ACADEMIC SUPPORT PROGRAM (4.0)

To support directly one or more of the three primary programs (Instruction, Research, Public Service) by carrying out activities (1) related to the preservation, maintenance and display of both the stock of knowledge and of related

*Goals identified as high priority for the 1985-87 biennium.

educational material, (2) that directly contribute to the way in which instruction is delivered or research is conducted, (3) directly related to the administration of academic programs, and (4) related to the professional development of academic personnel.

V. PHYSICAL PLANT OPERATIONS PROGRAM (7.0)

To maintain existing grounds and facilities, provide utility services, and plan and design future plant expansions and modifications.

VI. STUDENT SERVICE PROGRAM (5.0)

To contribute to the emotional and physical well-being of the students as well as to their intellectual, cultural and social development outside the context of the formal instruction program.

ACCREDITATION

North Carolina Central University is accredited by the Commission on Colleges of the Southern Association of Colleges and Schools, an accrediting body recognized by the Council on Postsecondary Accreditation and the U.S. Department of Education.

The School of Law is accredited by the American Bar Association. The program in Library Science is accredited by the American Library Association, and the program in Nursing by the Accrediting Services, National League for Nursing, Inc. Programs at the bachelor's and master's levels in early childhood education, elementary teaching, secondary teaching, and K-12 teaching; and at the master's level in educational communications and information technology, school principalship, supervision/curriculum development, and guidance counseling are accredited by the National Council for Accreditation of Teacher Education. All of these specialized accrediting bodies are recognized by the Council on Postsecondary Accreditation and the U.S. Department of Education.

Teacher Education programs are approved by the North Carolina State Department of Public Instruction. The North Carolina Board of Nursing approves the Nursing Program. The School of Law is approved by the North Carolina State Bar Council.

DEGREE PROGRAMS AND PROGRAM TRACKS
March 7, 1986

North Carolina Central University is authorized to offer degree programs in 16 discipline divisions at the baccalaureate, master's and professional levels. The programs and program tracks under each of these divisions with program titles, degrees, and tracks are as follows:

HEGIS CODE	DIVISION AND PROGRAM TITLE	DEGREE LEVEL*	DEGREE	PROGRAM TRACK
<u>BIOLOGICAL SCIENCE</u>				
0401	Biology, General	B	B.S.	Biology
		B	B.S.	Biology, Secondary Education
		M	M.S.	Biology
		M	M.S.	Biology, Secondary Education
<u>BUSINESS AND MANAGEMENT</u>				
0502	Accounting	B	B.B.A.	Accounting
0506	Business Management and Administration	B	B.B.A.	Business Administration
		B	B.B.A.	Banking and Finance
		B	B.B.A.	Computer Information Systems
		B	B.B.A.	Management
		B	B.B.A.	Marketing
		M	M.B.A.	Business Administration
0517	Business Economics	B	B.B.A.	Economics
		B	B.A.	Economics
<u>COMPUTER & INFORMATION SCIENCE</u>				
0701	Computer & Information Science	B	B.S.	Computer Science
<u>EDUCATION</u>				
0802	Elementary Education, General	B	B.A.	Elementary Education, Intermediate (4-6)
		B	B.A.	Early Childhood Education (K-4)
		M	M.A.	Elementary Education (Early Childhood and Intermediate)
		M	M.Ed.	Elementary Education (Early Childhood and Intermediate)

*Level: B = Bachelor's

M = Master's

DEGREE PROGRAMS AND PROGRAM TRACKS (Continued)

HEGIS CODE	DIVISION AND PROGRAM TITLE	DEGREE LEVEL*	DEGREE	PROGRAM TRACK
<u>EDUCATION (Continued)</u>				
0804	Junior High School Education	M	M.A.	Middle Grades Education
		M	M.Ed.	Middle Grades Education
0808	Special Education, General	M	M.Ed.	Education of Mentally Retarded
		M	M.Ed.	Education of the Emotionally Disturbed
0815	Speech Correction	M	M.Ed.	Speech and Hearing Education
0826	Student Personnel	M	M.A.	Student Personnel (Counseling and Guidance)
		M	M.A.	Career Counseling and Placement
		M	M.A.	Agency Counseling
0835	Physical Education	B	B.S.	Physical Education
		M	M.S.	Physical Education
		M	M.S.	Special Physical Education
		M	M.S.	Physical Education, Secondary Education
0837	Health Education	B	B.S.	Health Education
		B	B.S.	Community Health Education
0838	Business, Commerce, & Distributive Education	B	B.S.C.	Business Education, Secondary, Basic
		B	B.S.C.	Business Education, Secondary, Comprehensive
		M	M.S.	Business Education, Secondary
0893	Educational Administration & Supervision	M	M.A.	Education Administration Supervision
0897	Educational Media	M	M.A.	Instructional Media
<u>FINE AND APPLIED ARTS</u>				
1002	ART	B	B.A.	Art, General
		B	B.A.	Visual Communications
		B	B.A.	Art, Fine Art
		B	B.A.	Art, Art Education
1004	Music	B	B.M.	Jazz
		B	B.M.	Sacred Music

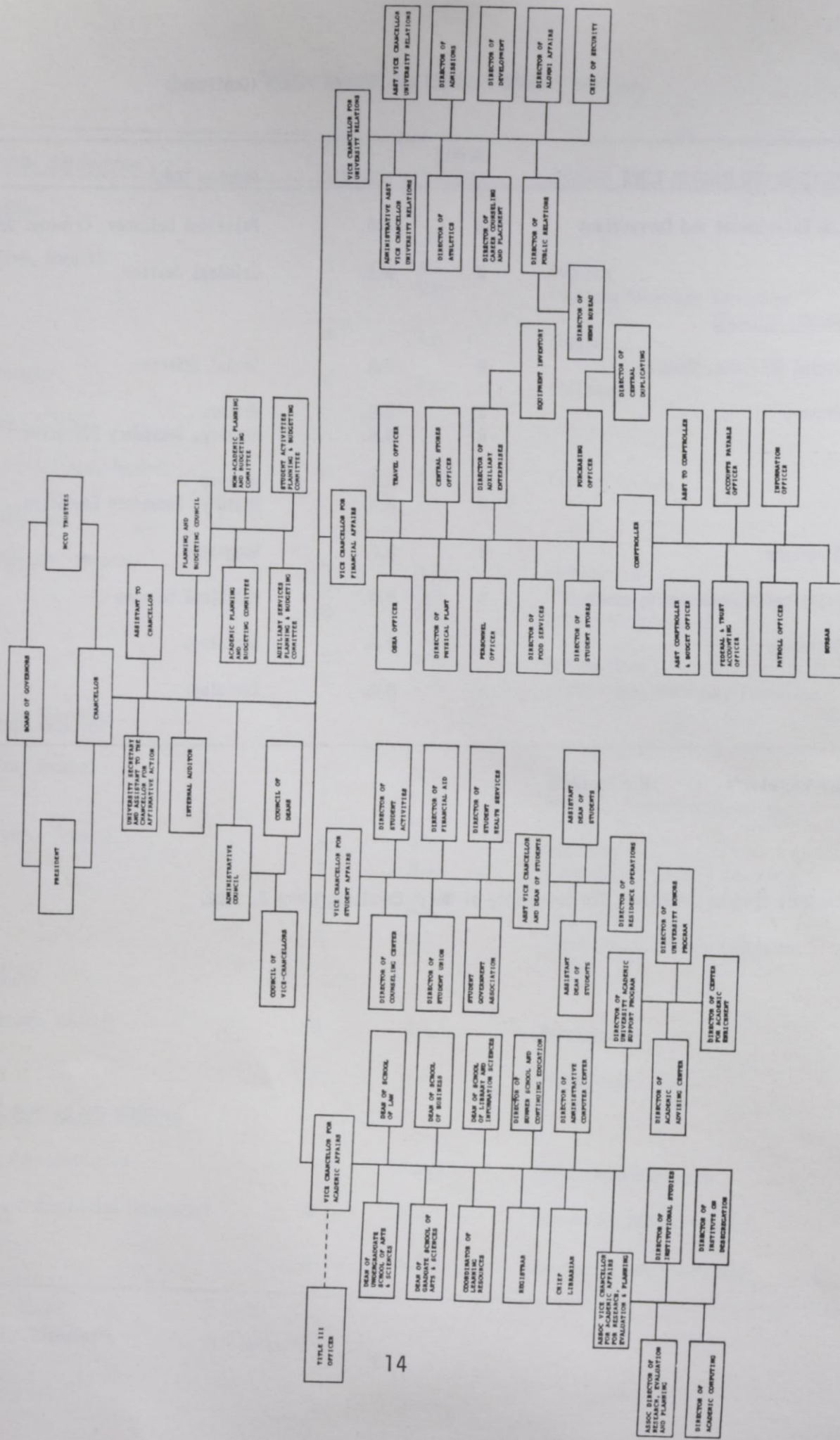
*Level: B = Bachelor's M = Master's

DEGREE PROGRAMS AND PROGRAM TRACKS (Continued)

HEGIS CODE	DIVISION AND PROGRAM TITLE	DEGREE LEVEL*	DEGREE	PROGRAM TRACK
1005	Music	B	B.A.	Music (Liberal Arts Program)
		B	B.A.	Music, Music Education
		M	M.A.	Music (Liberal Arts Program)
		M	M.A.	Music Education, K-12
1007	Dramatic Arts	B	B.A.	Dramatic Arts
		B	B.A.	Dramatic Arts, Secondary Education
		B	B.A.	Theatre Arts Education, K-12
<u>FOREIGN LANGUAGES</u>				
1102	French	B	B.A.	French
		B	B.A.	French, Secondary Education
		M	M.A.	French
		M	M.A.	French, Secondary Education
1105	Spanish	B	B.A.	Spanish
		B	B.A.	Spanish, Secondary Education
<u>HEALTH PROFESSIONS</u>				
1203	Nursing	B	B.S.N.	Nursing
<u>HOME ECONOMICS</u>				
1301	Home Economics, General	B	B.S.H.E.	Home Economics, General
		B	B.S.H.E.	Home Economics, Secondary Education
		M	M.S.	Home Economics Education
1303	Clothing and Textiles	B	B.S.H.E.	Clothing and Textiles
1306	Foods and Nutrition	B.	B.S.H.E.	Foods and Nutrition (including Dietetics)
<u>LAW</u>				
1401	Law, General	P	L.L.B.	Law
		P	J.D.	Law

*Level: B = Bachelor's M = Master's

NORTH CAROLINA CENTRAL UNIVERSITY
1985 - 1986



THE UNIVERSITY OF NORTH CAROLINA

BOARD OF GOVERNORS

PHILIP G. CARSON
JABOB H. FROELICH, JR.
GENEVA J. BOWE

CHAIRPERSON
VICE-CHAIRPERSON
SECRETARY

CLASS OF 1987

B. IRVIN BOYLE
ROBERT H. BULLOCK
WILLIAM A. DEES, JR.
JACOB H. FROELICH, JR.
JAMES E. HOLSHOUSER, JR.
WILLIAM A. JOHNSON
ROBERT L. JONES
E.B. TURNER

CHARLOTTE
SHELBY
GOLDSBORO
HIGH POINT
SOUTHERN PINES
LILLINGTON
RALEIGH
LUMBERTON

CLASS OF 1989

GENEVA J. BOWE
PHILIP G. CARSON
WALTER R. DAVIS
R. PHILLIP HAIRE
JULIA TAYLOR MORTON
ASA T. SPAULDING, JR.
DAVID J. WHICHARD, II
WILLIAM K. WOLTZ

MURFREESBORO
ASHEVILLE
MIDLAND, TX
SYLVA
LINVILLE
DURHAM
GREENVILLE
MOUNT AIRY

CLASS OF 1991

IRWIN BELK
WAYNE A. CORPENING
J. EARL DANIELEY
JOAN S. FOX
JOHN R. JORDAN, JR.
SAMUEL H. POOLE
J. AARON PREVOST
LOUIS T. RANDOLPH

CHARLOTTE
WINSTON-SALEM
ELON COLLEGE
OXFORD
RALEIGH
SOUTHERN PINES
HAZELWOOD
WASHINGTON

CLASS OF 1993

RODERICK D. ADAMS
CHARLES Z. FLACK, JR.
JOHN A. GARWOOD
REGINALD F. MCCOY
MARTHA F. MCNAIR
D. SAMUEL NEILL
MACEO A. SLOAN
RUTH D. WOODS

DURHAM
FOREST CITY
WILKESBORO
LAURINBURG
WINSTON-SALEM
HENDERSONVILLE
DURHAM
LUMBERTON

THE UNIVERSITY OF NORTH CAROLINA
OFFICERS OF GENERAL ADMINISTRATION

1985-86

WILLIAM C. FRIDAY, As of 3/1/86 C.D. SPANGLER PRESIDENT
ZONA C. NORWOOD ASSISTANT TO THE PRESIDENT
R.D. MCMILLAN, JR. ASSISTANT TO THE PRESIDENT
 FOR GOVERNMENTAL AFFAIRS
RICHARD H. ROBINSON, JR. ASSISTANT TO THE PRESIDENT
 FOR LEGAL AFFAIRS
TRUDY ATKINS ACTING ASSISTANT TO THE PRESIDENT
 FOR PUBLIC INFORMATION
ARNOLD K. KING ASSISTANT TO THE PRESIDENT
DAVID N. EDWARDS, JR. SPECIAL ASSISTANTS TO THE PRESIDENT
ELIZABETH C. BUNTING
JOHN P. KENNEDY, JR. SECRETARY OF THE UNIVERSITY
EDWARD W. CROWE ASSISTANT SECRETARY OF THE UNIVERSITY
FRANCES H. HOPE ASSISTANT SECRETARY OF THE BOARD OF GOVERNORS
JOHN W. DUNLOP DIRECTOR, THE UNIVERSITY OF NORTH CAROLINA
 CENTER FOR PUBLIC TELEVISION

ACADEMIC AFFAIRS DIVISION

RAYMOND H. DAWSON VICE PRESIDENT
 FOR ACADEMIC AFFAIRS
 AND SENIOR VICE PRESIDENT
ARTHUR PADILLA ASSOCIATE VICE PRESIDENTS
DONALD J. STEDMAN FOR ACADEMIC AFFAIRS
ROBERT W. WILLIAMS, JR.
MICKEY L. BURNIM ASSISTANT VICE PRESIDENT
 FOR ACADEMIC AFFAIRS
LOUIS T. PARKER, JR. DIRECTOR, NORTH CAROLINA
 EDUCATIONAL COMPUTING SERVICE
EUGENE MCDOWELL DIRECTOR, ASHEVILLE
 GRADUATE CENTER

FINANCE DIVISION

L. FELIX JOYNER	VICE PRESIDENT FOR FINANCE
HUGH BUCHANAN, JR. KENNIS R. GROGAN ELLEN H. KEPLEY	ASSOCIATE VICE PRESIDENTS FOR FINANCE
JEFFREY R. DAVIES LEON M. ENNIS, JR. A.P. WINFREY, III	ASSISTANT VICE PRESIDENTS FOR FINANCE
J. SIBLEY DORTON, JR.	ASSISTANT VICE PRESIDENT FOR FINANCE AND TREASURER
ALLEN WATERS	ASSISTANT VICE PRESIDENT FOR FINANCE AND UNIVERSITY PROPERTY OFFICER
MILTON GUPTON	SERVICES OFFICER
JAMES O. SMITH	FINANCE OFFICER

PLANNING DIVISION

ROY CARROLL	VICE PRESIDENT FOR PLANNING
GARY T. BARNES JOHN F. COREY	ASSOCIATE VICE PRESIDENTS FOR PLANNING
E. BRUCE SIGMON, JR.	ASSISTANT VICE PRESIDENT FOR PLANNING
ROBERT F. HILL, JR.	DIRECTOR OF INFORMATION SERVICES
LINDA BALFOUR	DIRECTOR OF DATA COLLECTION AND REPORTING
MARY ELLEN TAYLOR	COORDINATOR OF SPECIAL STUDIES

RESEARCH AND PUBLIC SERVICE PROGRAMS DIVISION

JASPER D. MEMORY	ACTING VICE PRESIDENT FOR RESEARCH AND PUBLIC SERVICE PROGRAMS
CHARLES L. WHEELER	ASSISTANT VICE PRESIDENT FOR RESEARCH AND PUBLIC SERVICE PROGRAMS AND DIRECTOR NORTH CAROLINA STATE COMMISSION ON HIGHER EDUCATION FACILITIES

NORTH CAROLINA CENTRAL UNIVERSITY
BOARD OF TRUSTEES

BERNARD ALLEN	RALEIGH
GAIL H. BLACKBURN, III (VICE CHAIR)	DURHAM
VICTOR S. BRYANT, JR.	DURHAM
GEORGE WATTS CARR, JR.	DURHAM
HELEN G. EDMONDS	DURHAM
CARLTON E. FELLERS	RALEIGH
J. RICHARD FUTRELL, JR.	ROCKY MOUNT
CHARLES V. HOLLAND (CHAIR)	RALEIGH
MICHEAL MATTOCKS (EX-OFFICIO MEMBER)	DURHAM
EVELYN O. SHAW	FAYETTEVILLE
S. DALLAS SIMMONS	LAWRENCEVILLE, VA
DAVID W. STITH	DURHAM
WALTER S. TUCKER	WINSTON-SALEM
ALRED J. WHITESIDES, JR.	ASHEVILLE

NORTH CAROLINA CENTRAL UNIVERSITY

OFFICERS AND ADMINISTRATIVE STAFF

1985-86

OFFICE OF THE CHANCELLOR

LeRoy T. Walker, PhD Chancellor
Acie L. Ward, JD Assistant To The Chancellor

ACADEMIC AFFAIRS

Cecil L. Patterson, PhD Vice Chancellor

GRADUATE SCHOOL OF ARTS AND SCIENCES:

Mary M. Townes, PhD Dean

UNDERGRADUATE SCHOOL OF ARTS AND SCIENCES:

Walter H. Pattillo, PhD Dean
George Reid, PhD Assistant Dean

Department Chairs

Lana T. Henderson, PhD	Art
John Ruffin, PhD	Biology
James Schooler, PhD	Chemistry
Linda Norflett, PhD	Dramatic Art
Ferman Moody, EdD	Education
Patsy B. Perry, PhD	English
Woodrow Nichols, PhD	Geography
Howard M. Fitts, EdD	Health Education
Percy Murray, PhD	History and Social Science
Beverly A. Nichols, EdD	Home Economics
William T. Fletcher, PhD	Mathematics
Henri Armand, PhD	Modern Foreign Languages
Charles Gilchrist, PhD	Music
Johnea D. Kelley, PhD	Nursing
Robert J. Clack, PhD	Philosophy
Carey Hughley, PhD	Physical Education and Recreation
Kinney H. Kim, PhD	Physics
Joseph Aicher, PhD	Political Science
Leslie Brinson, PhD	Psychology
George Conklin, PhD	Sociology

SCHOOL OF BUSINESS:

Tyronza Richmond, PhD Dean
Raphael Thompson, MBA Associate Dean for Graduate
Programs and Corporate Relations
Marian H. Thorne, EdD Associate Dean for Undergraduate
Programs
John Turner, MED Associate Dean for Student Affairs

SCHOOL OF LAW:

Thomas Ringer, JD	Acting Dean
Suzanne Leary, JD	Assistant Dean
Janice Mills, JD	Acting Assistant Dean

SCHOOL OF LIBRARY AND INFORMATION SCIENCE:

Benjamin F. Speller, PhD	Dean
--------------------------	------

ACADEMIC SUPPORT PROGRAMS:

LaFayette W. Lipscomb, PhD	Director
Sarah Bell-Lucas, MA	Director, Center for Academic Enrichment
Eugene Eaves, PhD	Director, Academic Advising and Honors Program
Sherry Bugg, BA	Psychometrist
Lula G. Thorpe	Regional Director, Health Careers Program

ADMINISTRATIVE COMPUTER CENTER:

Duncan Floyd	Acting Director
--------------	-----------------

JAMES E. SHEPARD LIBRARY:

Floyd C. Hardy, PhD	Head Librarian
---------------------	----------------

OFFICE OF RECORDS AND REGISTRATION:

Bernell Jones, PhD	Registrar
Grace Cooke	Assistant Registrar

OFFICE OF RESEARCH, EVALUATION, AND PLANNING:

Linda K. Pratt, PhD	Associate Vice Chancellor for Research, Evaluation, and Planning
Karen M. Gentemann, PhD	Associate Director for Research, Evaluation, and Planning
James W. Pierce, MA	Director, Institutional Studies
Charles M. Beattie, II, PhD	Director, Institute on Desegregation
Robert D. Montgomery, MA	Director, Academic Computing Center

SUMMER SESSIONS AND CONTINUING EDUCATION:

Waltz Maynor, EdD	Director
-------------------	----------

FACULTY SENATE:

Beverly Jones, PhD	Chair
--------------------	-------

FINANCIAL AFFAIRS

George T. Thorne, MS	Vice Chancellor
Linda Belton, BS	Federal Loans Collection Officer
Robert Curtis, Jr.	Central Stores Officer
Patricia Durham, MS	Director of Auxiliary Enterprises
Rebecca P. Edmonds, MA	Purchasing Officer
Ralph Fennell, BSC	Comptroller
Edna Harrington	Director of Student Stores
Marshall Mitchell	Director of Central Duplicating
Erater E. Green	Bursar
Alyce P. Little, BBA	Payroll Officer
William E. McDonald, BSEE	Director of Physical Plant
Barbara J. Lassiter	Travel Officer
Vacant	Personnel Officer
Robert P. Smith, BS	Director of Food Services
Thomasine Toxey, BS	Federal and Trust Accounting Officer
Vacant	OSHA Officer

STUDENT AFFAIRS

Roland Buchanan, PhD	Vice Chancellor
Roger B. Bryant, EdD	Assistant Vice Chancellor and Dean of Students
Evelyn Deck	Assistant Dean of Students
Shirley Green, MA	Director of Residence Operations
Marian E. Covington	Assistant to the Vice Chancellor and Supervisor of Student Organizational Finances
Thurman Prescott, Jr., BA	Director of Student Union
Glen R. Martin, EdD	Director of Counseling Center
Lola T. McKnight, BS	Director of Financial Aid
Marcono R. Hines, MD	Director of Student Health Services

UNIVERSITY RELATIONS

Tyrone Baines, PhD	Vice Chancellor
Carolyn Williams, PhD	Administrative Assistant to the Vice Chancellor
William Malone, MSPH	Assistant Vice Chancellor
William P. Evans, BS	Director of Alumni Affairs
Thomas Lutten, MA	Director of Career Counseling and Placement
Nancy Rowland, MA	Director of Admissions
Robert Poole, BA	Director of Development
Edward Boyd, MS	Director of Athletics
John W. Smith, MA	Chief of Security
Alex M. Rivera, BA	Director of Public Relations
David H. Witherspoon, BA	Director of News Bureau
Christopher Fisher, MA	Sports Information Director

TABLE 1

CHARACTERISTICS OF NCCU FACILITIES, FALL 1985

INSTRUCTIONAL FACILITIES

<u>YEAR COMPLETED</u>	<u>NAME</u>	<u>ASSIGNABLE SQUARE FT.</u>	<u>CLASS ROOMS</u>	<u>CLASS LABS</u>	<u>OTHER LABS</u>	<u>OFFICES</u>
1930	Alexander Dunn	12,764	4		4	27
1937	Duke Auditorium	10,566			1	2
1937	Old Law School	12,996	3			17
1937	Robinson Science	16,316	11	6	3	19
1940	Women's Gym	13,421				4
1950	Classroom Building	14,682	11			44
1950	McDougald Gym	35,421	3			7
1950	Music and Fine Arts	14,132	3	9		6
1950	Shepard Library	38,742	4			21
1952	Dent Home Economics	13,780	6	2	5	13
1953	Home Econ. Practice House	2,870				13
1955	Taylor Education Bldg.	25,715	16	1	6	40
1956	Lee Biology Building	21,137	6	9	21	9
1956	Willis Commerce Bldg.	25,958	9	6		56
1957	Biology Greenhouse	440		1		
1969	Bowling Alley	5,358	1			
1969	Hubbard Chemistry	19,085	4	10	9	10
1976	Communications Bldg.	51,910	28	4	4	66
1976	Fine Arts Addition	14,987	4	2	13	18
1980	Turner Law School	50,912	7		2	41
1982	Health Sciences Bldg.	28,684	13	2	5	25
1984	Criminal Justice Bldg.	17,837	13	1	3	23
1985	Physical Education Complex	102,013	158 ^{1/2}		3	31
TOTAL INSTRUCTIONAL FACILITIES		549,726	158	52	80	479

SOURCE: North Carolina Facilities Inventory and Space Utilization Reports, Fall 1985

TABLE 1
(continued)

CHARACTERISTICS OF NCCU FACILITIES, FALL 1985

ADMINISTRATIVE/FACULTY/STUDENT SERVICE FACILITIES

<u>YEAR COMPLETED</u>	<u>NAME</u>	<u>ASSIGNABLE SQUARE FT.</u>	<u>OFFICES</u>
1925	Admissions Office	2,487	6
1929	Hoey Administration Building	19,239	83
1937	Cottage 1	1,979	6
1937	Jordan House	1,747	8
1937	Personnel Building	1,558	5
1937	ROTC	1,730	7
1945	Faculty Apt. 1	3,625	10
1950	Central Heating Plant	6,985	
1950	Health Building	13,071	16
1956	McDougald House	3,299	5
1963	Honors Court	849	3
1965	Storage Building	11,694	1
1966	Pearson Cafeteria	11,694	1
1968	Elder Student Union	26,543	16
1977	Maintenance Building	7,897	10
1983	Cafeteria Annex	2,824	3
TOTAL ADMINISTRATIVE/FACULTY/ STUDENT SERVICES FACILITIES		164,264	190

TABLE 1
(continued)

CHARACTERISTICS OF NCCU FACILITIES, FALL 1985

RESIDENTIAL FACILITIES

<u>YEAR COMPLETED</u>	<u>NAME</u>	<u>ASSIGNABLE SQUARE FT.</u>	<u>OCCUPANCY</u>	<u>OFFICES</u>
<u>DORMITORIES</u>				
1930	Shepard (women)	28,744	156	2
1937	McLean (women)	16,669	80	2
1937	Rush (coed-honors)	17,189	70	
1939	Old Senior (women)	10,240	18	18
1951	Chidley (men)	77,282	642	7
1951	Graduate Apts.	10,750	12	
1960	Latham (women)	28,453	201	1
1966	Baynes (women)	52,323	402	1
1968	Eagleson (women)	55,526	402	1
<u>TOTAL DORMITORY FACILITIES</u>		<u>297,176</u>	<u>1984</u>	<u>32</u>
<u>OTHER RESIDENTIAL FACILITIES</u>				
1960	707 Burlington Ave.	850		
1960	709 Burlington Ave.	850		
1963	521 Nelson Street	1,150		
1963	523 Nelson Street	850		
1969	1908 Fayetteville St.	1,649		
1969	1910 Fayetteville St.	454		
1974	Chancellor's Residence	3,293		
289				
<u>TOTAL OTHER RESIDENTIAL FACILITIES</u>		<u>9,096</u>		
<u>GRAND TOTAL: ALL FACILITIES</u>		<u>1,020,262</u>		

TABLE 2

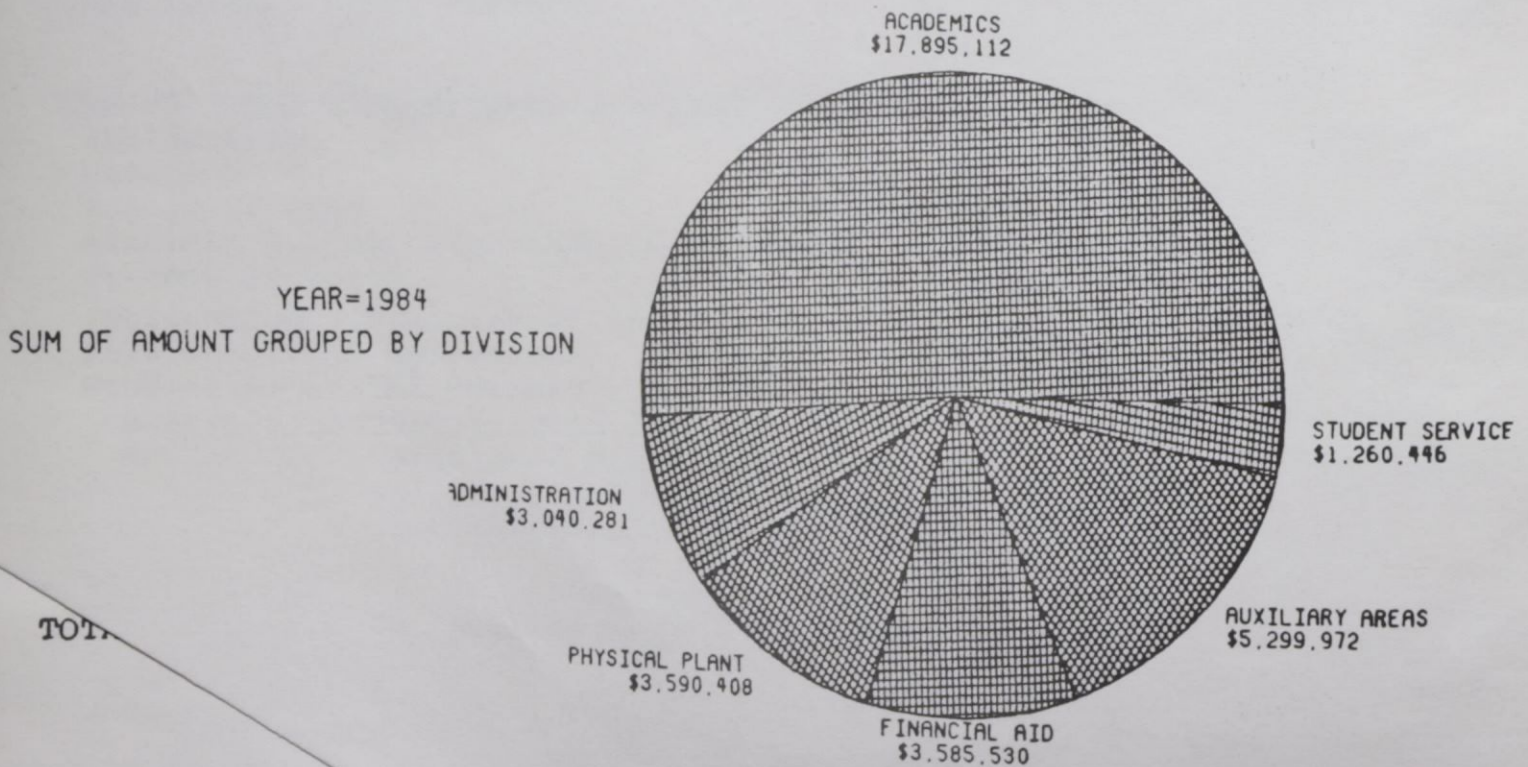
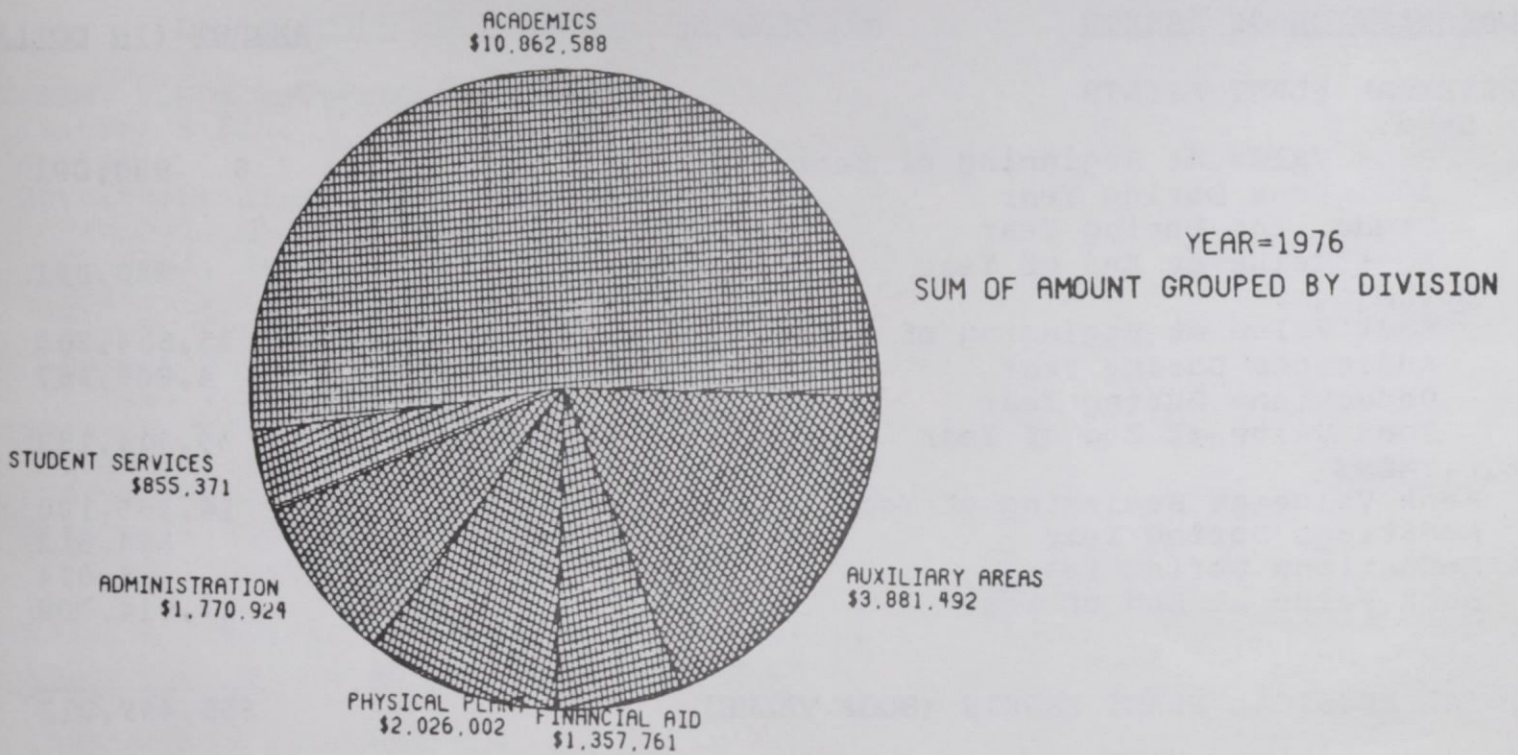
REVENUES AND EXPENDITURES FOR
FISCAL YEAR, 1984-85

<u>DESCRIPTION OF FINANCIAL STATISTICS</u>	<u>AMOUNT (IN DOLLARS)</u>
CURRENT FUNDS REVENUES BY SOURCES	
Tuition & Fees	\$ 3,611,418
State	19,726,941
Government Grants & Contracts:	
Federal, Unrestricted	215,163
Federal, Restricted	5,385,618
State, Unrestricted	9,606
State, Restricted	337,756
Local, Unrestricted	
Local, Restricted	
Private Gifts, Grants & Contracts:	
Unrestricted	143,289
Restricted	938,368
Endowment Income:	
Unrestricted	
Restricted	72,847
Sales & Services of Educational Activities	
Sales & Services of Auxiliary Enterprises	6,237,240
Other Sources	447,072
Independent Operations	
TOTAL CURRENT FUNDS REVENUES	<u>\$37,125,318</u>
CURRENT FUNDS EXPENDITURES & MANDATORY TRANSFER	
Instruction	\$13,555,054
Research	336,525
Public Service	226,541
Academic Support (Including Libraries)	3,696,440
Student Services	1,390,905
Institutional Administration	3,726,825
Physical Plant Operations	3,630,976
Student Financial Support	
Awards from Unrestricted Funds	387,332
Awards from Restricted Funds	3,949,811
Auxiliary Enterprises (Including Mandatory Transfers)	6,087,467
Independent Operations (Including Mandatory Transfers)	
TOTAL CURRENT FUNDS EXPENDITURES & MANDATORY TRANSFERS	<u>\$36,987,875</u>

TABLE 3
ASSETS FOR FISCAL YEAR, 1984-85

<u>DESCRIPTION OF ASSETS</u>	<u>AMOUNT (IN DOLLARS)</u>
PHYSICAL PLANT ASSETS	
Land:	
Book Value at Beginning of Year	\$ 980,091
Additions During Year	
Deductions During Year	
Book Value at End of Year	980,091
Buildings:	
Book Value at Beginning of Year	35,654,966
Additions During Year	4,249,167
Deductions During Year	
Book Value at End of Year	39,904,133
EQUIPMENT	
Book Value at Beginning of Year	16,755,100
Additions During Year	864,512
Deductions During Year	4,824
Book Value at End of Year	17,614,788
 TOTAL PHYSICAL PLANT ASSETS (BOOK VALUE)	 <u>\$58,499,012</u>

Figure 1.
**EIGHT-YEAR COMPARISON OF UNIVERSITY
 EXPENDITURES BY BUDGET AREA**



TOTAL

TABLE 4

STUDENT TUITION, FEES AND CHARGES
FOR THE 1985-86 ACADEMIC YEAR

CATEGORY	UNDERGRADUATE		GRADUATE	
	<u>IN-STATE</u>	<u>OUT-OF-STATE</u>	<u>IN-STATE</u>	<u>OUT-OF-STATE</u>
TUITION AND ACADEMIC FEES	\$ 410.00	\$ 3,256.00	\$ 410.00	\$ 3,256.00
OTHER REQUIRED FEES			355.00	355.00
Athletic Fee	63.00	63.00		
Health Services Fee	100.00	100.00		
Cultural Series				
Student Union				
General Student Activity Fee	92.00	92.00		
Debt Services Fee(s)	127.00	127.00		
TOTAL TUITION & REQUIRED FEES	792.00	3,638.00	765.00	3,611.00
DORMITORY ROOM RENT	957.00	957.00	957.00	957.00
BOARD PLAN (7-DAY)	1,011.00	1,011.00	1,011.00	1,011.00

TABLE 5

LIBRARY COLLECTIONS AND EXPENDITURES
FALL 1985

	<u>AMOUNT</u>
<u>COLLECTIONS</u>	
PERIODICALS & LIBRARY COLLECTIONS	
Current Periodical Subscriptions	2,301
Library Collection (Books)	
Number of Volumes	570,313
Number of Titles (Excluding Duplicate Copies)	418,123
Separate Government Documents Collection	127,968
Microforms - All Types	
Number of Book Titles Represented by Microforms	16,379
Number of Periodical Titles Represented by Microform	289
Number of Physical Units of Microforms Not Reported Above	375,686
Periodicals & Audiovisual Materials - Number of Titles	26,257
All Other Library Materials, Including Unbound Non-Current	4,948
<u>EXPENDITURES</u>	
OPERATING EXPENDITURES	
Salaries & Wages	\$ 802,953
Fringe Benefits	190,873
Wages of Students on an Hourly Basis	8,118
Supplies & Materials	
Books	373,274
Periodicals	203,546
Microforms	58,450
Audiovisual Materials	6,456
All Other Library Materials	48,829
Binding & Rebinding	13,028
Other Operating Expenditures	97,828
	<hr/>
Total Library Operating Expenditures	\$1,803,355

FACTS ABOUT STUDENTS

LIST OF TABLES AND FIGURES

		<u>Page</u>
<u>Admissions</u>		
TABLE	6: Number of Student Applications, Acceptances and Enrollees, Fall 1985	33
FIGURE	2: Seven-Year Comparison of Undergraduate Applicants, Acceptances and Enrollees	34
FIGURE	3: Seven-Year Comparison of Graduate and First Professional Applicants, Acceptances and Enrollees	35
TABLE	7: Mean SAT or ACT Scores of Entering Freshmen, 1969-1985	36
TABLE	8: High School Class Rank of Entering Freshmen, 1979-1985	37
TABLE	9: Undergraduate Transfers Into NCCU, 1972-1985	38
FIGURE	4: Entering Freshmen Planned Hours of Work Per Week	39
FIGURE	5: Entering Freshmen Planned Occupations	40
 <u>Enrollment</u>		
TABLE	10: General Characteristics of Enrollment, 1983-1985	41
TABLE	11: Sex Distribution of Headcount Enrollment, 1926-1985	42
TABLE	12: Racial Composition of Headcount Enrollment, 1976-1985	43
TABLE	13: Mean Age of Enrolled Students, 1975-1985	44
TABLE	14: Undergraduate Enrollment by Age, 1985	45
TABLE	15: Graduate and First Professional Enrollment by Age, 1985	46
TABLE	16: Geographic Origin of Students, 1971-1985	47
TABLE	17: Distribution of Students by State, Fall 1985	48
FIGURE	6: Geographic Origin by States, Undergraduate and Graduate Students, Fall 1985	49
TABLE	18: Distribution of North Carolina Students by County, Fall 1985	50
FIGURE	7: Geographic Origin by Counties, Undergraduate and Graduate Students, Fall 1985	51
TABLE	19: Students Enrolled, Graduated, Suspended, and Not Enrolled After Initial Entry Year	52
TABLE	20: First Time North Carolina Central University Freshmen Enrolled or Graduated	53
TABLE	21: First Time Freshmen in The University of North Carolina System Enrolled or Graduated	53

FACTS ABOUT STUDENTS (Continued)

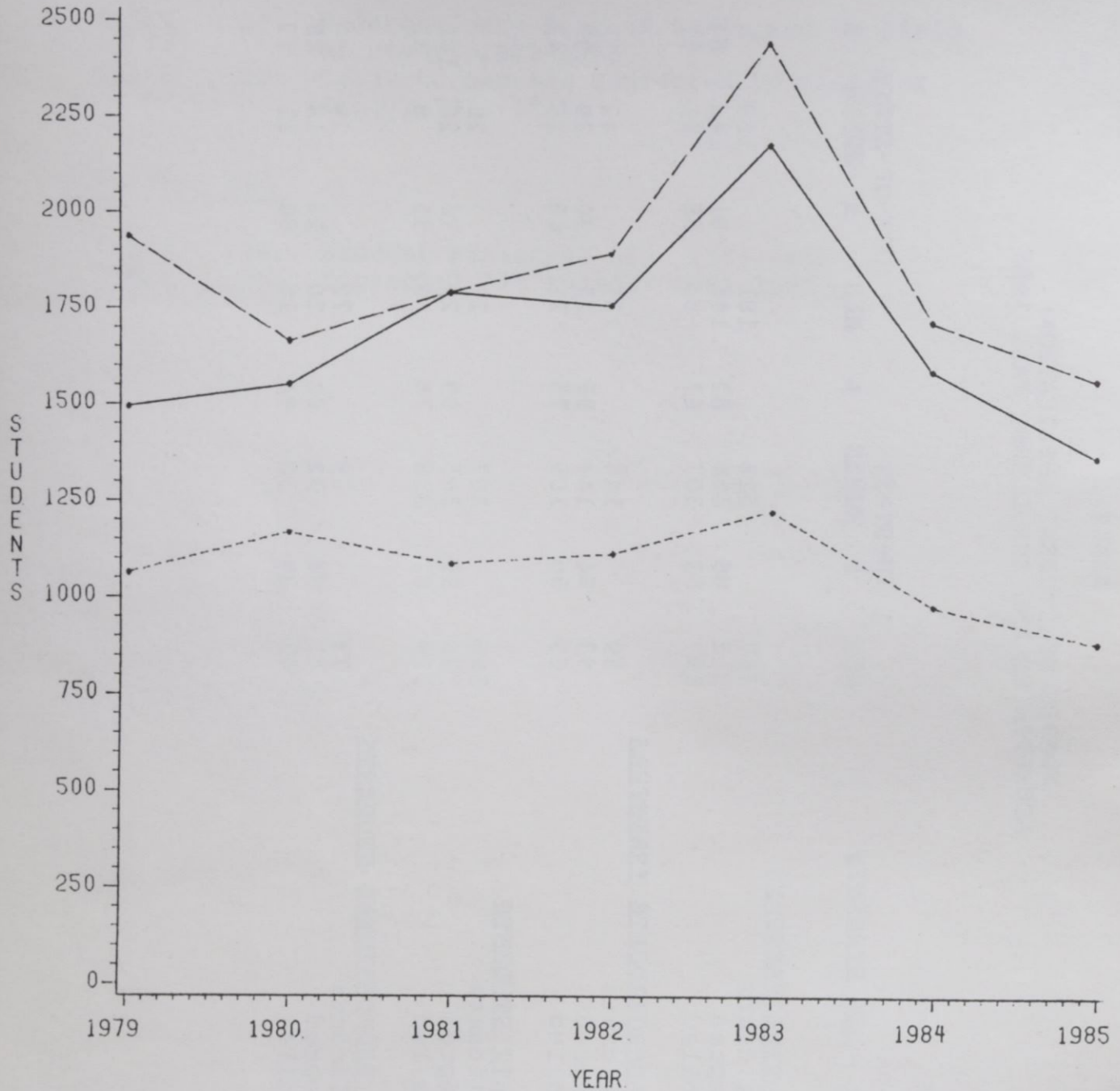
		<u>Page</u>
<u>Degrees Conferred</u>		
TABLE	22: Undergraduate Degrees Conferred by Field of Study, 1972-1985	54
TABLE	23: Graduate Degrees Conferred by Field of Study, 1972-1985	56
<u>Financial Aid</u>		
TABLE	24: Student Financial Aid, 1984-1985	57
TABLE	25: Financial Aid Awards, 1981-1985	58

TABLE 6

NUMBER OF STUDENT APPLICATIONS,
ACCEPTANCES AND ENROLLEES, FALL 1985

<u>NEW STUDENTS</u>	<u>MEN</u>	<u>IN-STATE</u>			<u>OUT-OF-STATE</u>				<u>TOTAL</u>
		<u>♂</u>	<u>WOMEN</u>	<u>♀</u>	<u>MEN</u>	<u>♀</u>	<u>WOMEN</u>	<u>♀</u>	
<u>FIRST-TIME FRESHMEN</u>									
Applicants	367		524		181		169		1241
Accepted	312	85	456	87	146	81	142	84	1056
Enrolled	197	63	307	67	84	58	81	57	669
<u>NEW UNDERGRADUATE TRANSFERS</u>									
Applicants	99		146		31		42		318
Accepted	93	94	144	99	28	90	39	93	304
Enrolled	65	66	109	75	21	68	18	43	213
<u>GRADUATE STUDENTS</u>									
Applicants	160		307		27		26		520
Accepted	158	99	305	99	26	96	26	100	515
Enrolled	129	82	238	78	9	35	8	31	384
<u>FIRST PROFESSIONAL STUDENTS</u>									
Applicants	73		39		72		29		213
Accepted	47	64	32	82	20	28	14	48	113
Enrolled	42	89	30	94	16	80	11	79	99

Figure 2.
**SEVEN-YEAR COMPARISON OF UNDERGRADUATE
 APPLICANTS, ACCEPTANCES & ENROLLEES**



LEGEND: STATUS

—•— ACCEPTANCES
 -•- ENROLLEES

-•- APPLICANTS

Figure 3.

SEVEN-YEAR COMPARISON OF GRADUATE & FIRST PROFESSIONAL APPLICANTS, ACCEPTANCES & ENROLLEES

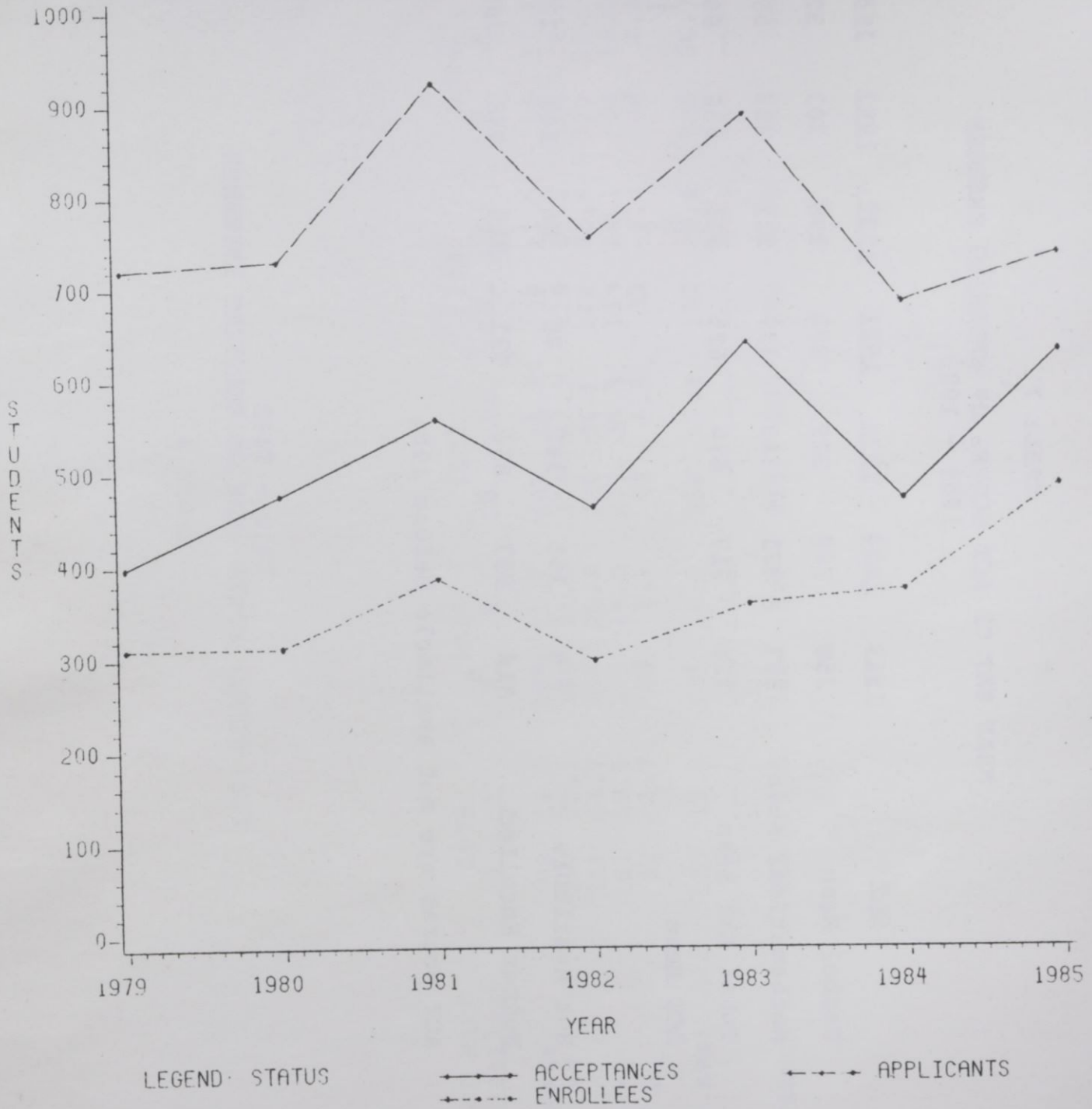


TABLE 7

MEAN SAT OR ACT SCORES OF ENTERING FRESHMEN
1969 - 1985

<u>SAT</u>	<u>1969</u>	<u>1974</u>	<u>1979</u>	<u>1981</u>	<u>1982</u>	<u>1983</u>	<u>1984</u>	<u>1985</u>
Verbal Mean	350	346	329	298	298	303	329	334
Mathematical Mean	377	371	349	327	327	333	359	360
Total SAT Mean	727	717	678	625	625	636	688	694
ACT Mean							12	10
Not Available	8	155	342	86	86	143	222	60
Number Enrolled	816	957	854	931	918	990	765	669

ACT scores are not available before 1984

TABLE 8

HIGH SCHOOL CLASS RANK OF ENTERING FRESHMEN
1979 - 1985

CLASS RANK (Quintiles)	1979		1981		1982		1983		1984		1985	
	<u>N</u>	<u>%</u>	<u>N</u>	<u>%</u>	<u>N</u>	<u>%</u>	<u>N</u>	<u>%</u>	<u>N</u>	<u>%</u>	<u>N</u>	<u>%</u>
Highest	98	11.5	109	11.7	101	11.0	109	11.0	90	11.8	87	13.0
Second	197	23.1	196	21.0	204	22.2	219	22.1	139	18.2	136	20.3
Third	211	24.7	246	26.4	220	24.1	248	25.0	173	22.6	139	20.8
Fourth	161	18.9	177	19.0	173	18.8	179	18.1	94	12.3	104	15.5
Fifth	32	3.7	68	7.3	60	6.5	53	5.4	34	4.4	48	7.2
Not Available	155	18.1	135	14.5	160	17.4	182	18.4	235	30.7	155	23.2
TOTALS	854	100	931	100	918	100	990	100	765	100	669	100

TABLE 9
 UNDERGRADUATE TRANSFERS INTO NCCU
 1972 - 1985

<u>TRANSFER INSTITUTION</u>	<u>1972</u>	<u>1974</u>	<u>1978</u>	<u>1981</u>	<u>1982</u>	<u>1983</u>	<u>1984</u>	<u>1985</u>
In-State Public Senior Colleges	8	21	26	26	40	76	48	46
In-State Private Senior Colleges	7	7	16	22	34	38	24	26
In-State Public Community Colleges & Technical Institutes	21	1	61	59	60	105	60	63
In-State Private Junior Colleges	14	19	26	6	3	6	4	7
Out-of-State Institutions	19	39	27	41	50	73	62	66
Unknown	—	—	—	—	—	—	—	12
TOTALS	69	87	156	154	189	301	205	220

Figure 4.

ENTERING FRESHMEN PLANNED HOURS OF WORK PER WEEK

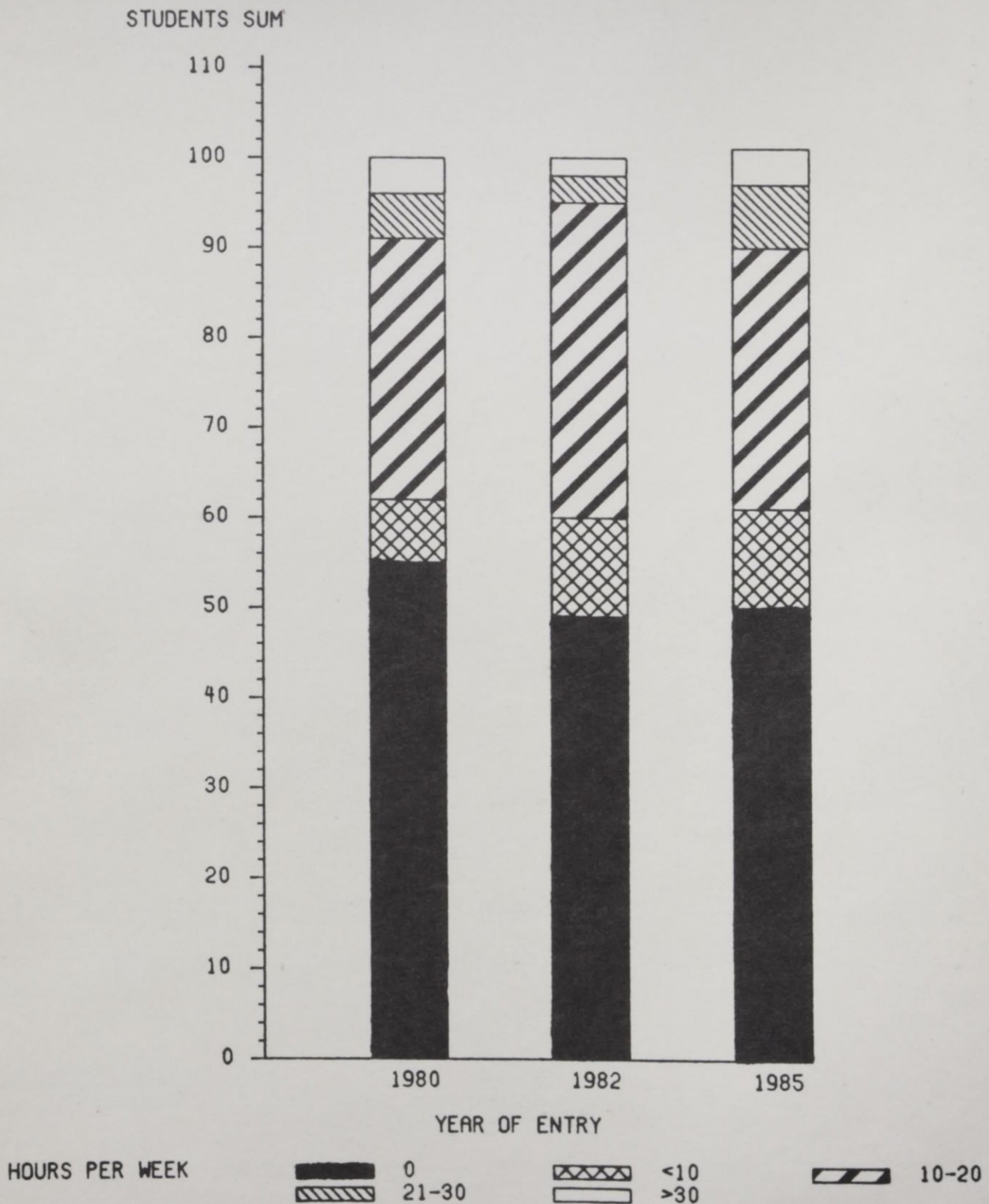
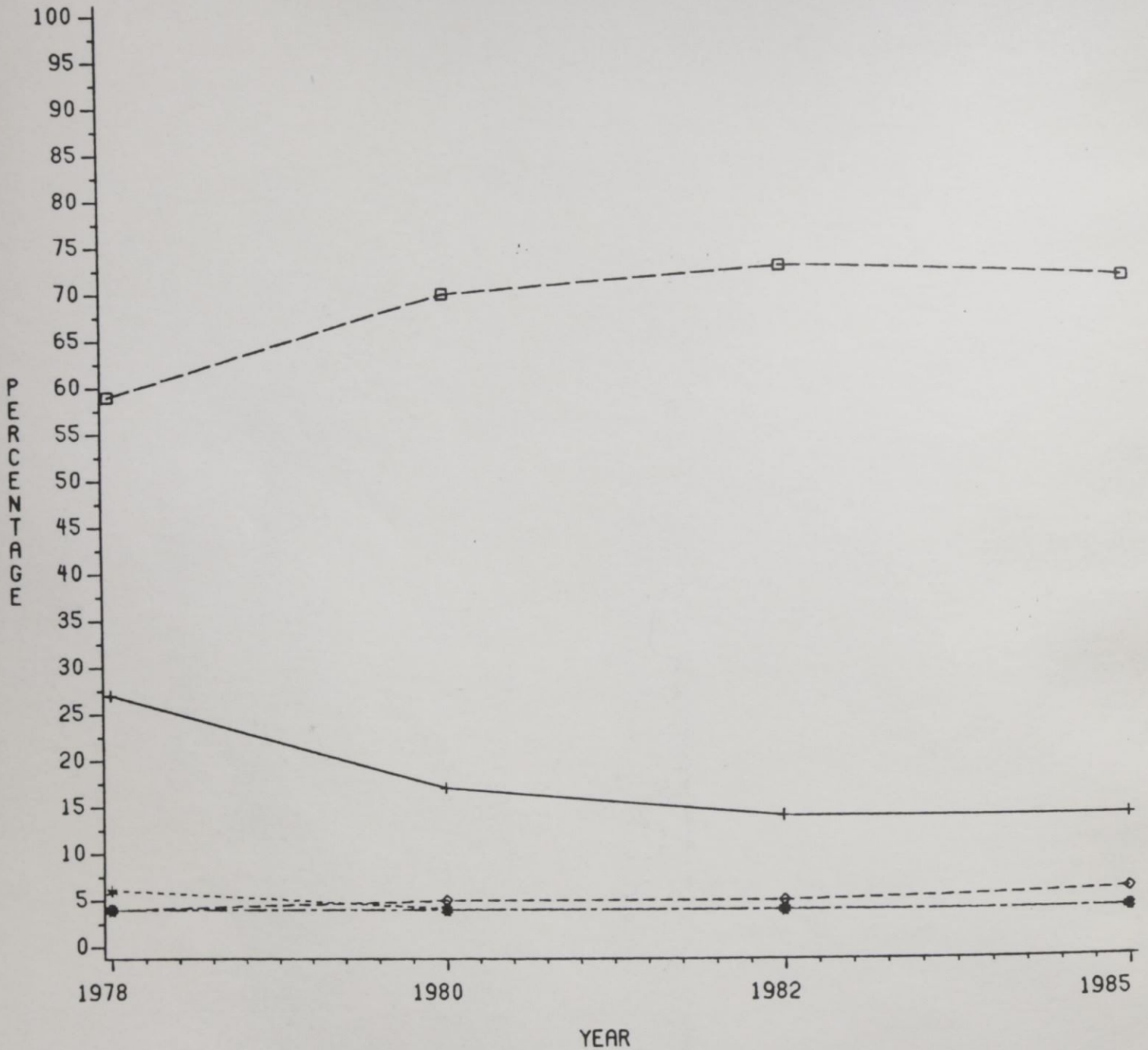


Figure 5.

ENTERING STUDENTS PLANNED OCCUPATIONS



LEGEND: OCCUP

+ + + ACADEMICS
□ □ □ BUSINESS/PROF
◆ ◆ ◆ TECHNICAL/CRAFTS

* * * CREATIVE ARTS
◇ ◇ ◇ HOME/FAMILY

TABLE 10

GENERAL CHARACTERISTICS OF ENROLLMENT,
1983-1985

CHARACTERISTICS	1983			1984			1985		
	MEN	WOMEN	TOTAL	MEN	WOMEN	TOTAL	MEN	WOMEN	TOTAL
UNDERGRADUATE									
FRESHMEN	604 11.6	946 18.1	1550 29.7	542 11.9	767 16.8	1309 28.8	501 10.6	681 14.5	1182 25.1
Full-Time	488	772	1260	458	616	1074	440	564	1004
Part-Time	116	174	290	84	151	235	61	117	178
SOPHOMORE	377 7.2	681 13.0	1058 20.2	345 7.5	566 12.4	911 20.0	380 8.0	609 13.0	989 21.0
Full-Time	315	577	892	316	509	825	348	542	890
Part-Time	62	104	166	29	57	86	32	67	99
JUNIOR	316 6.0	560 10.7	876 16.7	259 5.6	469 10.3	728 16.0	277 5.9	501 10.6	778 16.5
Full-Time	251	462	713	220	404	624	238	423	661
Part-Time	65	98	163	39	65	104	39	78	117
SENIOR	251 4.8	465 8.9	716 13.7	197 4.3	387 8.5	584 12.8	222 4.7	387 8.2	609 12.9
Full-Time	183	332	515	143	298	441	167	301	468
Part-Time	68	133	201	54	89	143	55	86	141
SPECIAL	35 .7	133 2.5	168 3.2	46 1.0	91 1.9	137 3.0	60 1.2	92 2.0	152 3.2
Full-Time	11	14	25	6	7	13	4	10	14
Part-Time	24	119	143	40	84	124	56	82	138
UNDERGRADUATE TOTAL	1583 30.3	2785 53.2	4368 83.5	1389 30.5	2280 50.0	3669 80.6	1440 30.6	2270 48.3	3710 78.9
Full-Time	1248	2157	3405	1143	1834	2977	1197	1840	3037
Part-Time	335	628	963	246	446	692	243	430	673
GRADUATE	162 3.0	358 7.0	520 10.0	152 3.3	408 8.9	560 12.3	208 4.4	468 10.0	676 14.4
Full-Time	49	91	140	44	73	117	69	78	147
Part-Time	113	267	380	108	335	443	139	390	529
FIRST-PROFESSIONAL	192 3.7	148 2.8	340 6.5	177 3.8	146 3.2	323 7.1	174 3.7	140 2.9	314 6.6
Full-Time	170	126	296	144	121	265	140	109	249
Part-Time	22	22	44	33	25	58	34	31	65
TOTALS	1937 37.0	3291 63.0	5228 100	1718 37.7	2834 62.2	4552 100	1822 38.8	2878 61.2	4700 100
Full-Time	1467	2374	3841	1331	2028	3359	1406	2027	3433
Part-Time	470	917	1387	387	806	1193	416	851	1267
TOTAL PTE	1728	2850	4578	1528	2436	3964	1629	2456	4085

TABLE 13

MEAN AGE OF ENROLLED STUDENTS
1975 - 1985

UNDERGRADUATE

YEAR	<u>MEN</u>		<u>WOMEN</u>		<u>TOTAL</u>		TOTAL MEANS
	<u>FULL- TIME</u>	<u>PART- TIME</u>	<u>FULL- TIME</u>	<u>PART- TIME</u>	<u>FULL- TIME</u>	<u>PART- TIME</u>	
1975	22	26	20	28	21	26	21
1976	22	28	20	28	20	28	21
1977	22	27	21	27	21	27	22
1978	22	27	21	29	22	28	22
1979	22	27	23	28	22	27	23
1980	21	27	21	29	21	28	22
1981	21	28	21	30	21	29	22
1982	22	28	22	30	22	30	23
1983	21	26	21	28	21	27	23
1984	21	28	21	30	21	29	23
1985	21	28	21	31	21	30	22

GRADUATE AND FIRST PROFESSIONAL

YEAR	<u>MEN</u>		<u>WOMEN</u>		<u>TOTAL</u>		TOTAL MEANS
	<u>FULL- TIME</u>	<u>PART- TIME</u>	<u>FULL- TIME</u>	<u>PART- TIME</u>	<u>FULL- TIME</u>	<u>PART- TIME</u>	
1975	28	30	26	31	27	31	29
1976	28	31	26	32	27	32	30
1977	28	32	27	32	28	32	30
1978	28	33	28	32	28	32	30
1979	30	32	29	33	30	33	31
1980	28	32	28	32	28	32	30
1981	29	32	28	33	28	32	31
1982	29	34	29	34	29	34	31
1983	30	34	28	35	29	34	32
1984	30	34	29	34	30	34	32
1985	30	35	29	35	30	35	33

TABLE 14

UNDERGRADUATE ENROLLMENT BY AGE
1985

AGE	IN-STATE STUDENTS							
	MEN				WOMEN			
	FULL-TIME		PART-TIME		FULL-TIME		PART-TIME	
	N	%	N	%	N	%	N	%
Less than 18	4	.1	1	*	11	.3	1	*
18	144	3.9	5	.1	248	6.9	10	.3
19	160	4.3	10	.3	279	7.5	6	.2
20	185	5.0	11	.3	309	8.3	16	.4
21	141	3.8	14	.4	278	7.5	16	.4
22	92	2.5	16	.4	146	3.9	37	1.0
23	65	1.7	16	.4	77	2.1	26	.7
24	37	1.0	23	.6	24	.6	19	.5
25 - 30	78	2.1	53	1.4	84	2.3	80	2.1
31 - 35	22	.6	32	.9	45	1.2	74	2.0
36 - 40	7	.2	21	.6	25	.8	71	1.9
41 - 50	4	.1	18	.5	20	.5	47	1.3
51 - 64	1	*	3	.1	4	.1	12	.3
65 and over							2	.1
TOTALS	940	25.3	223	6.0	1550	42.0	417	11.2

AGE	OUT-OF-STATE STUDENTS							
	MEN				WOMEN			
	FULL-TIME		PART-TIME		FULL-TIME		PART-TIME	
	N	%	N	%	N	%	N	%
Less than 18	11	.3			12	.3		
18	56	1.5	2	.1	70	1.9		
19	40	1.1	3	.1	71	1.9	2	.1
20	51	1.4	3	.1	45	1.2	6	.2
21	28	.7	2	.1	50	1.3		
22	30	.8	3	.1	22	.6	2	.1
23	6	.2	3	.1	9	.2		
24	8	.2			2	.1		
25 - 30	24	.6	2	.1	9	.2	2	.1
31 - 35	3	.1	1	*			1	*
36 - 40			1	*				
41 - 50								
51 - 64								
65 and over								
TOTALS	257	6.9	20	.5	290	7.8	13	.3

* Less than .05%.

TABLE 15

GRADUATE AND FIRST PROFESSIONAL ENROLLMENT BY AGE
1985

AGE	IN-STATE STUDENTS								
	MEN				WOMEN				
	FULL-TIME		PART-TIME		FULL-TIME		PART-TIME		
	N	%	N	%	N	%	N	%	
less than 18									
18									
19	1	*	1	*					
20									
21	2	.2							
22	4	.4	1	*	5	.5	2	.2	
23	9	.9	5	.5	14	1.4	6	.6	
24	20	2.0	2	.2	19	1.9	9	.9	
25 - 30	62	6.3	41	4.1	65	6.6	106	10.7	
31 - 35	34	3.4	53	5.4	15	1.5	102	10.3	
36 - 40	18	1.8	35	3.5	18	1.8	88	8.9	
41 - 50	14	1.4	27	2.7	14	1.4	79	8.0	
51 - 64	4	.4	4	.4	5	.5	19	1.9	
65 and over	1	*							
TOTAL	169	17.0	169	17.0	155	15.6	411	41.5	

AGE	OUT-OF-STATE STUDENTS								
	MEN				WOMEN				
	FULL-TIME		PART-TIME		FULL-TIME		PART-TIME		
	N	%	N	%	N	%	N	%	
less than 18									
18									
19									
20									
21									
22	3	.3			6	.6	2	.2	
23	3	.3			3	.3	2	.2	
24	5	.5			9	.9			
25 - 30	18	1.8	2	.2	7	.7	4	.4	
31 - 35	5	.5	1	*	5	.5	1	*	
36 - 40	4	.4			2	.2			
41 - 50	2	.2	1	*					
51 - 64			1	*					
65 and over									
TOTAL	40	4.0	5	.5	32	3.2	9	.9	

* Less than .05%.

TABLE 16

GEOGRAPHIC ORIGIN OF STUDENTS
1971 - 1985

GEOGRAPHIC ORIGIN	1971		1974		1977		1980		1982		1983		1984		1985	
	N	%	N	%	N	%	N	%	N	%	N	%	N	%	N	%
Durham County	880	24	1096	25	1231	25	1219	25	1259	25	1261	24	1260	28	1268	27
Adjacent Counties	421	11	528	12	653	14	700	14	694	14	724	14	707	16	688	15
Other N. C. Counties	2033	55	2320	53	2477	51	2420	49	2379	48	2516	48	2015	44	2078	44
Out-of-State	389	10	447	10	494	10	571	12	585	12	647	12	504	11	603	13
U. S. Territories									1	0	1	0	3	0	5	0
Foreign Countries *									72	1	79	2	63	1	58	1
TOTALS	3723	100	4391	100	4855	100	4910	100	4990	100	5228	100	4552	100	4700	100

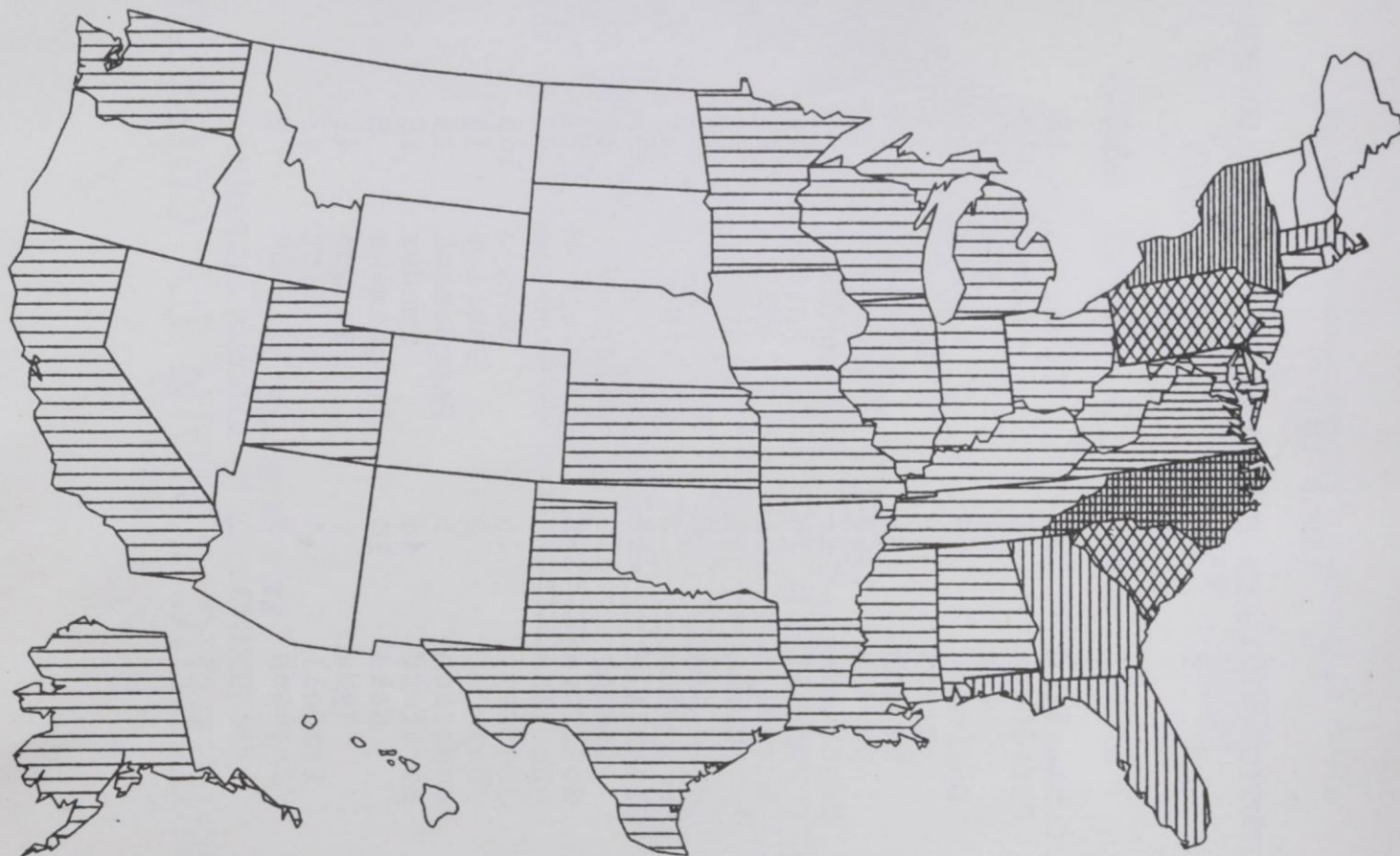
* Prior to 1981, foreign students were classified as out-of-state.

TABLE 17
DISTRIBUTION OF STUDENTS BY STATE
Fall, 1985

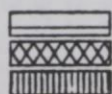
<u>STATE</u>	<u>NUMBER</u>	<u>STATE</u>	<u>NUMBER</u>
Alabama	5	Nebraska	0
Alaska	1	Nevada	0
Arizona	0	New Hampshire	0
Arkansas	0	New Jersey	84
California	6	New Mexico	0
Colorado	0	New York	109
Connecticut	8	North Carolina	4034
Delaware	11	North Dakota	0
District of Columbia	51	Ohio	7
Florida	15	Oklahoma	0
Georgia	15	Oregon	0
Hawaii	0	Pennsylvania	39
Idaho	0	Rhode Island	0
Illinois	7	South Carolina	37
Indiana	3	South Dakota	0
Iowa	0	Tennessee	9
Kansas	1	Texas	3
Kentucky	2	Utah	1
Louisiana	3	Vermont	0
Maine	0	Virginia	71
Maryland	83	Washington	1
Massachusetts	14	West Virginia	1
Michigan	5	Wisconsin	1
Minnesota	2	Wyoming	0
Mississippi	5	U.S. Territories	5
Missouri	3	Foreign Countries	58
Montana	0		
		TOTAL	4700

Figure 6.
GEOGRAPHIC ORIGIN BY STATES
 UNDERGRADUATE & GRADUATE STUDENTS

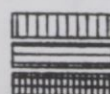
FALL SEMESTER, 1985



LEGEND: COUNT



1 TO 10
 26 TO 50
 101 TO 200



11 TO 25
 51 TO 100
 GREATER THAN 3000

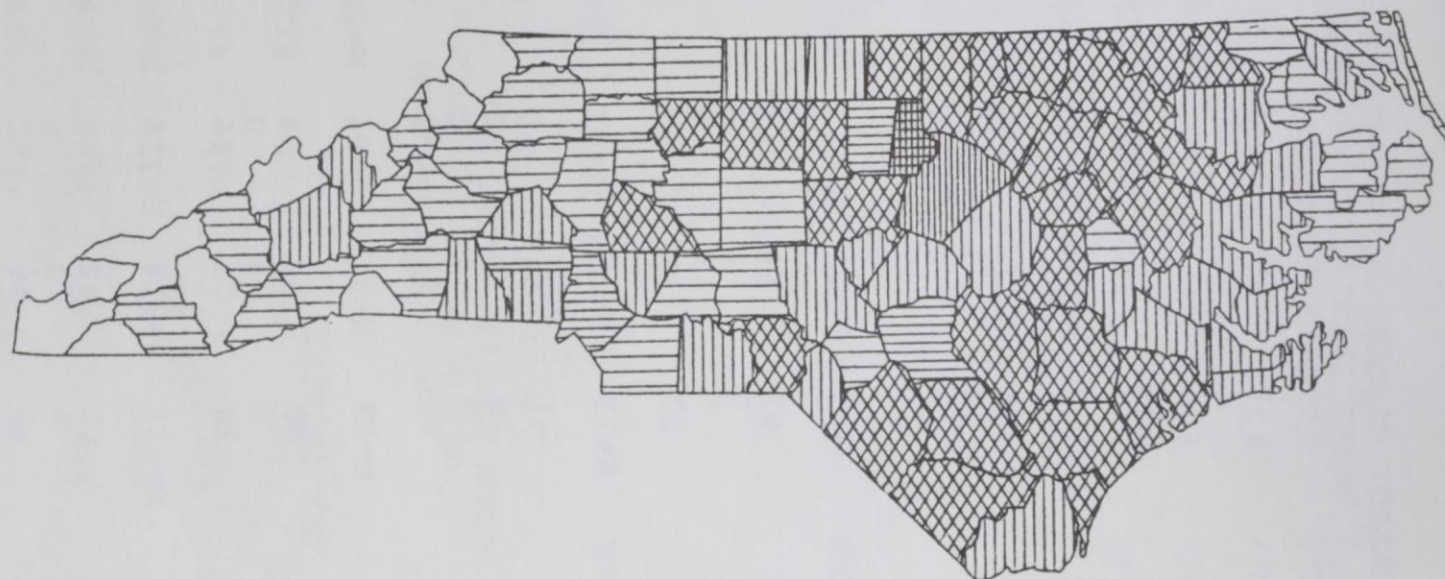
Office of Research, Evaluation and Planning

TABLE 18

DISTRIBUTION OF NORTH CAROLINA STUDENTS BY COUNTY
FALL, 1985

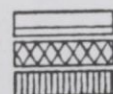
COUNTY	NUMBER	COUNTY	NUMBER	COUNTY	NUMBER	COUNTY	NUMBER
Alamance	28	Cumberland	168	Johnston	15	Randolph	6
Alexander	1	Currituck	1	Jones	12	Richmond	18
Alleghany	1	Dare	1	Lee	16	Robeson	47
Anson	19	Davidson	8	Lenoir	25	Rockingham	16
Ashe	0	Davie	2	Lincoln	6	Rowan	29
Avery	1	Duplin	31	McDowell	2	Rutherford	7
Beaufort	15	Durham	1268	Macon	1	Sampson	37
Bertie	24	Edgecombe	86	Madison	0	Scotland	19
Bladen	34	Forsyth	70	Martin	26	Stanley	2
Brunswick	14	Franklin	26	Mecklenburg	164	Stokes	4
Buncombe	14	Gaston	21	Mitchell	0	Surry	1
Burke	2	Gates	8	Montgomery	7	Swain	0
Cabarrus	14	Graham	0	Moore	21	Transylvania	0
Caldwell	3	Granville	89	Nash	38	Tyrell	3
Camden	4	Greene	10	New Hanover	44	Union	10
Carteret	11	Guilford	99	Northampton	37	Vance	48
Caswell	19	Halifax	66	Onslow	31	Wake	393
Catawba	11	Harnett	18	Orange	165	Warren	53
Chatham	35	Haywood	2	Pamlico	16	Washington	15
Cherokee	0	Henderson	5	Pasquotank	23	Watauga	0
Chowan	8	Hertford	48	Pender	26	Wayne	94
Clay	0	Hoke	10	Perquimans	8	Wilkes	3
Cleveland	14	Hyde	6	Person	41	Wilson	61
Columbus	36	Iredell	4	Pitt	43	Yadkin	1
Craven	23	Jackson	0	Polk	0	Yancey	22
						TOTAL	4034

Figure 7.
GEOGRAPHIC ORIGIN BY COUNTIES
UNDERGRADUATE & GRADUATE STUDENTS
FALL SEMESTER, 1985

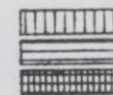


51

LEGEND: COUNT



1 TO 10
26 TO 100
201 TO 1000



11 TO 25
101 TO 200
GREATER THAN 1000

Office of Research, Evaluation and Planning

TABLE 19

STUDENTS ENROLLED, GRADUATED, SUSPENDED, AND NOT ENROLLED
AFTER INITIAL ENTRY YEAR
(PERCENTAGES)

CLASS	YEAR OF ENTRY							
	1978	1979	1980	1981	1982	1983	1984	1985
FRESHMEN	N=837	N=854	N=986	N=930	N=918	N=990	N=765	N=669
Enrolled	75	74	71	66	77	62	72	
Graduated	0	0	0	0	0	0	0	
Suspended	7	8	11	6	3	6	2	
Not Enrolled	18	17	28	27	19	32	26	
LOWER LEVEL TRANSFERS	N=83	N=121	N=119	N=102	N=146	N=151	N=150	N=139
Enrolled	67	68	67	68	70	64	65	
Graduated	0	1	0	1	0	0	0	
Suspended	5	4	6	2	3	3	1	
Not Enrolled	27	27	27	29	27	33	34	
UPPER LEVEL TRANSFERS	N=73	N=85	N=62	N=53	N=42	N=80	N=52	N=74
Enrolled	71	55	66	64	79	56	79	
Graduated	0	0	2	4	0	1	2	
Suspended	0	4	0	0	0	1	0	
Not Enrolled	29	41	32	30	21	41	19	
FIRST PROFESSIONAL	N=83	N=87	N=94	N=109	N=128	N=133	N=109	N=99
Enrolled	80	89	54	78	82	71	72	
Graduated	0	0	0	0	0	2	2	
Not Enrolled	20	11	46	22	18	27	24	
MASTERS	N=121	N=214	N=218	N=277	N=157	N=208	N=201	N=199
Enrolled	60	42	47	46	43	45	52	
Graduated	4	2	1	5	6	6	6	
Not Enrolled	36	56	52	49	51	50	37	

TABLE 20

FIRST TIME NORTH CAROLINA CENTRAL UNIVERSITY
FRESHMEN ENROLLED OR GRADUATED
(percentages)

	YEAR OF INITIAL ENTRY						
	1978	1979	1980	1981	1982	1983	1984
AFTER ONE YEAR	75%	74%	71%	66%	77%	62%	72%
AFTER TWO YEARS	60%	64%	62%	56%	48%	54%	
AFTER THREE YEARS	57%	58%	55%	42%	44%		
AFTER FOUR YEARS	49%	46%	39%	35%			
AFTER FIVE YEARS	44%	40%	39%				
AFTER SIX YEARS	43%	42%					
AFTER SEVEN YEARS	44%						

TABLE 21

FIRST TIME FRESHMEN IN THE UNIVERSITY OF NORTH CAROLINA
SYSTEM ENROLLED OR GRADUATED
(percentages)

	YEAR OF INITIAL ENTRY						
	1978	1979	1980	1981	1982	1983	1984
AFTER ONE YEAR	77%	78%	76%	76%	78%	76%	78%
AFTER TWO YEARS	65%	62%	64%	63%	63%	64%	
AFTER THREE YEARS	59%	59%	59%	57%	58%		
AFTER FOUR YEARS	54%	54%	54%	53%			
AFTER FIVE YEARS	53%	53%	53%				
AFTER SIX YEARS	54%	54%					
AFTER SEVEN YEARS	53%						

TABLE 22

UNDERGRADUATE DEGREES CONFERRED BY FIELD OF STUDY
1972 - 1985

DISCIPLINE, DIVISION AND SPECIALTY	1972		1977		1981		1982		1983		1984		1985	
	N	R	N	R	N	R	N	R	N	R	N	R	N	R
BIOLOGICAL SCIENCES														
Biology, General	24	4.1	30	4.8	20	3.5	22	4.5	20	4.4	21	4.2	28	5.5
BUSINESS AND MANAGEMENT														
Accounting	30	5.2	26	4.1	36	6.3	25	5.1	19	4.2	22	4.4	24	4.7
Business Economics	1	.2	3	.5	1	.2								
Business Management and Administration	50	8.6	119	18.9	106	18.4	74	15.1	67	15.0	112	22.6	115	22.8
EDUCATION														
Business, Commerce & Distributive Education	59	10.0	22	3.5	30	5.2	14	2.8	10	2.2	7	1.4	4	.8
Elementary Education, General	27	4.6	68	11.0	59	10.2	53	10.8	43	9.5	27	5.5	25	4.9
Health Education	14	2.4	22	3.5	7	1.2	12	2.4	15	3.3	4	.8	13	2.5
Physical Education	29	5.0	15	2.4	13	2.3	10	2.0	5	1.1	5	1.0	3	.6
FINE AND APPLIED ARTS														
Art	5	.9	11	1.8	13	2.3	12	2.4	15	3.3	18	3.6	5	1.0
Dramatic Arts	6	1.0	1	.2	9	1.6	2	.4			2	.4	4	.8
Music			10	1.6	11	2.0	9	1.8	7	1.6	5	1.0	5	1.0
FOREIGN LANGUAGES														
French	5	.9	1	.2	1	.2					2	.4		
German	1	.2									2	.4		
Spanish	4	.7			1	.2					1	.2	1	.2
HEALTH PROFESSIONS														
Nursing	13	2.2	41	6.5	35	6.1	23	4.7	28	6.2	49	10.0	53	10.5
HOME ECONOMICS														
Clothing and Textiles	6	1.0	8	1.3	6	1.0	10	2.0	6	1.3	7	1.4	4	.8
Foods and Nutrition	2	.3	1	.2	6	1.0			8	1.8	5	1.0	5	1.0
Home Economics, General	10	1.7	3	.5	10	1.7	9	1.8	8	1.8	12	2.4	5	1.0
LETTERS														
English, General	21	3.6	23	3.7	19	3.3	19	3.9	20	4.4	15	3.0	17	3.4
Philosophy			1	2.0			2	.4			2	.4		
MATHEMATICS														
Mathematics, General	13	2.2	9	1.4	7	1.2	7	1.4	9	2.0	13	2.6	10	2.0

PHYSICAL SCIENCE

Chemistry
Physics

7	1.2	4	.6	6	1.0	5	1.0	4	1.0	11	2.2	10	2.0
2	.3							1	.2			2	.4

PSYCHOLOGY

Psychology, General

22	3.8	39	6.2	25	4.3	17	3.5	19	4.2	18	3.6	12	2.4
----	-----	----	-----	----	-----	----	-----	----	-----	----	-----	----	-----

PUBLIC AFFAIRS AND SERVICES

Criminal Justice Administration
Parks and Recreation

		23	3.7	46	8.0	52	10.6	42	9.2	55	11.1	72	14.2
				14	2.4	15	3.1	10	2.2	9	1.8		

SOCIAL SCIENCES

Afro-American Studies
History
Geography
Political Science & Government
Social Sciences, General
Sociology

44	7.6	20	3.2	7	1.2	8	2.0	7	1.6	7	1.4	12	2.4
14	2.4	9	1.4	15	2.6	10	2.0	6	1.3	3	.6	1	.2
30	5.2	55	8.8	55	9.5	58	11.8	48	10.6	43	9.0	58	11.5
3	.5	4	.6			1	.2			1	.2		
106	18.2	31	4.9	18	3.1	21	4.3	34	7.5	19	3.8	17	3.4

TOTALS

<u>582</u>	<u>100</u>	<u>630</u>	<u>100</u>	<u>576</u>	<u>100</u>	<u>490</u>	<u>100</u>	<u>451</u>	<u>100</u>	<u>495</u>	<u>100</u>	<u>505</u>	<u>100</u>
------------	------------	------------	------------	------------	------------	------------	------------	------------	------------	------------	------------	------------	------------

TABLE 23

GRADUATE DEGREES CONFERRED BY FIELD OF STUDY
1972 - 1985

DISCIPLINE, DIVISION AND SPECIALTY	1972		1977		1981		1982		1983		1984		1985	
	N	A	N	A	N	A	N	A	N	A	N	A	N	A
BIOLOGICAL SCIENCES														
Biology, General	4	3.0	3	1.2	5	2.3	6	2.4	6	2.6	7	3.1	6	2.7
BUSINESS AND MANAGEMENT														
Business Management and Administration	6	4.4	11	4.5	18	8.3	18	7.3	8	3.4	7	3.1	5	2.3
EDUCATION														
Business, Commerce & Distributive Education	5	3.7	7	2.9	3	1.4	5	2.0	5	2.1	5	2.2	1	.5
Special Education	13	9.6	28	11.6	18	8.3	31	12.7	29	12.4	19	8.3	11	5.0
Educational Administration & Supervision	7	5.2	19	7.9	14	6.4	9	3.7	18	7.7	10	4.4	14	6.4
Educational Media	1	.7	11	4.5	4	1.8	9	3.7	6	2.6	23	10.1	9	4.1
Elementary Education, General	8	5.9	20	8.3	2	.9	17	7.0	18	7.7	17	7.5	24	11.0
Physical Education	3	2.2	4	1.6	4	1.8	6	2.4	1	.4	1	.4	4	1.8
Speech Correction	1	.7	8	3.3	5	2.3	6	2.4	4	1.7	3	1.3		
Student Personnel, Guidance & Counseling	12	8.9	34	14.0	35	16.0	29	11.8	27	11.6	25	11.0	20	9.2
FINE AND APPLIED ARTS														
Music	5	3.7	5	2.1	5	2.3			2	.9			1	.5
FOREIGN LANGUAGE														
French	1	.7									1	.4		
HOME ECONOMICS														
Home Economics, General	2	1.5			2	.9	2	.8	2	.9	8	3.5	2	.9
LAW														
Juris Doctor's	33	24.4	43	17.8	67	30.7	63	26.0	51	21.9	70	30.7	88	40.4
LETTERS														
English, General	2	1.5	4	1.6			4	1.6			2	1.0	3	1.4
LIBRARY SCIENCE														
Library Science, General	17	12.6	22	9.0	18	8.3	26	10.6	40	17.2	19	8.3	19	8.7
MATHEMATICS														
Mathematics, General			2	.8			1	.4	1	.4	1	.4	1	.5
PHYSICAL SCIENCE														
Chemistry, General	2	1.5	4	1.6	2	.9	1	.4	2	.9	1	.4	1	.5
PSYCHOLOGY														
Psychology, General					8	3.7	6	2.4	5	2.1	5	2.2	5	2.3
PUBLIC AFFAIRS AND SERVICES														
Park and Recreation Management							2	.8	3	1.3				
SOCIAL SCIENCES														
History	4	3.0	10	4.1	5	2.3	2	.8	2	.9	3	1.3	2	.9
Sociology	2	1.5	2	.8	3	1.4	2	.8	3	1.3	1	.4	2	.9
TOTALS	135	100	242	100	218	100	245	100	233	100	228	100	218	100

TABLE 24

STUDENT FINANCIAL AID
1984 - 1985

	NUMBER	AVERAGE AWARD	TOTAL AMOUNT
<u>SCHOLARSHIPS, GRANTS AND AWARDS</u>			
<u>UNDERGRADUATE</u>			
Non-Athletic	1,069	\$400.48	\$428,115
Athletic	150	942.39	141,359
SEOG	1,114	625.04	696,295
BEOG	2,071	1,234.40	2,556,457
HPEAA (3) and Nursing Assistance	0	0	0
<u>LAW SCHOOL</u>			
Assistance to Professional Students	75	788.86	59,165
<u>GRADUATE SCHOOL</u>			
Fellowships, Traineeships, Grants & Scholarships	269	752.59	202,447
Assistantships	62	1,263.70	78,350
<u>STUDENT EMPLOYMENT</u>			
<u>UNDERGRADUATE</u>			
College Work-Study	1,066	600.53	640,171
PACE Jobs	0	0	0
Other Student Employment	254	699.61	177,702
<u>GRADUATE SCHOOL</u>			
College Work-Study	49	497.14	24,360
<u>STUDENT LOANS</u>			
<u>UNDERGRADUATE</u>			
Nursing Loans	9	716.66	6,450
Out-of-State GSL (4)	181	2,558.60	463,107

- (1) Supplemental Education Opportunity Grant
- (2) Basic Educational Opportunity Grant
- (3) Health Professions Education Assistance Act
- (4) Guaranteed Student Loans

TABLE 25

FINANCIAL AID AWARDS
1981 - 1985

	<u>1981-1982</u>	<u>1982-1983</u>	<u>1983-1984</u>	<u>1984-1985</u>
TOTAL NUMBER OF APPLICANTS	4341	4188	4095	4069
APPLICANTS WHO ACTUALLY ENROLLED	3694	3927	3564	3869
NUMBER OF AWARDS AND LOANS	7389	7987	8907	7741
UNDUPLICATED NUMBER OF AID RECIPIENTS	4003	3892	4627	3316
% OF ENROLLED STUDENTS RECEIVING AID	81.0	78.0	83.2	70.6
DOLLAR AMOUNT OF AWARDS AND LOANS	\$6,924,042	\$7,371,520	\$8,675,205	\$8,281,385
MEAN AWARD	\$937	\$923	\$974	\$1,070
MEAN AWARD PER RECIPIENT	\$1,730	\$1,894	\$1,875	\$2,497

TABLE 26

CREDIT HOURS GENERATED BY DEPARTMENT
ACADEMIC YEARS 1982-83 THROUGH 1985-86

	YEAR							
	1982-83		1983-84		1984-85		1985-86	
	HOURS		HOURS		HOURS		HOURS	
	SUM	PERCENT	SUM	PERCENT	SUM	PERCENT	SUM	PERCENT
<u>UNDERGRADUATE SCHOOL OF ARTS & SCIENCES</u>								
Art	3343.0	3.0	3023.0	2.9	2116.0	2.3	2246.0	2.4
Biology	7681.0	7.0	8731.0	8.3	6650.0	7.1	5841.0	6.3
Business	18940.0	17.2	14494.0	13.8	10904.0	11.7	10199.0	11.0
Chemistry	2499.0	2.3	2721.0	2.6	2392.0	2.6	1872.0	2.0
Drama	2000.0	1.8	1989.0	1.9	2181.0	2.3	2172.0	2.3
Education	4079.0	3.7	3993.0	3.8	3180.0	3.4	3152.0	3.4
English	15078.0	13.7	14481.0	13.7	11544.0	12.4	11130.0	12.0
Geography	2322.0	2.1	2055.0	2.0	1892.0	2.0	2010.0	2.2
Health Education	3822.0	3.5	4156.0	3.9	3293.0	3.5	3607.0	3.9
History & Social Sciences	4195.0	3.8	4740.0	4.5	5187.0	5.6	6504.0	7.0
Home Economics	2636.0	2.4	1937.0	1.8	2268.0	2.4	2163.0	2.3
Mathematics	9833.0	8.9	9829.0	9.3	9282.0	10.0	9346.0	10.1
Modern Foreign Languages	4239.0	3.8	4056.0	3.8	4284.0	4.6	4719.0	5.1
Music	3776.0	3.4	3705.0	3.5	3617.5	3.9	3095.0	3.3
Nursing	1766.0	1.6	2696.0	2.6	3058.0	3.3	2520.0	2.7
Orientation	1088.0	1.0	1033.0	1.0	758.0	0.8	770.0	0.8
Philosophy	1296.0	1.2	1191.0	1.1	990.0	1.1	723.0	0.8
Physical Education & Recreation	5054.2	4.6	4665.5	4.4	4154.0	4.5	3669.0	4.0
Physics	920.0	0.8	1059.0	1.0	922.0	1.0	885.0	1.0
Political Science	8064.0	7.3	8325.0	7.9	8262.0	8.9	0234.0	10.0
Psychology	2521.0	2.3	2338.0	2.2	2451.0	2.6	2437.0	2.6
ROTC	219.0	0.2	166.5	0.2	287.0	0.3	319.5	0.3
Sociology	4804.0	4.4	3985.0	3.8	3470.0	3.7	3866.0	4.2
TOTAL	110175.2	100.0	105369.0	100.0	93142.5	100.0	92479.5	100.0

TABLE 26 (continued)

CREDIT HOURS GENERATED BY DEPARTMENT
ACADEMIC YEARS 1982-83 THROUGH 1985-86

	YEAR							
	1982-83		1983-84		1984-85		1985-86	
	HOURS		HOURS		HOURS		HOURS	
	SUM	PERCENT	SUM	PERCENT	SUM	PERCENT	SUM	PERCENT
PROFESSIONAL SCHOOLS								
Business	228.0	2.8	276.0	2.9	210.0	2.3	195.0	2.1
Library & Information Sciences	927.0	11.6	1017.0	10.7	894.0	9.7	1410.0	15.3
TOTAL	8006.0	100.0	9529.0	100.0	9206.0	100.0	9228.0	100.0
GRADUATE SCHOOL OF ARTS & SCIENCES								
Biology	425.0	7.8	256.0	5.6	248.0	5.2	226.0	4.1
Chemistry	250.0	4.6	291.0	6.3	153.0	3.2	136.0	2.5
Education	3477.0	63.7	2807.0	61.0	3012.0	63.6	3138.0	57.4
English	78.0	1.4	138.0	3.0	108.0	2.3	153.0	2.8
History & Social Sciences	195.0	3.6	96.0	2.1	126.0	2.7	120.0	2.2
Home Economics	198.0	3.6	219.0	4.8	174.0	3.7	132.0	2.4
Mathematics	90.0	1.6	153.0	3.3	69.0	1.5	165.0	3.0
Modern Foreign Languages	18.0	0.3	15.0	0.3	12.0	0.3	6.0	0.1
Music	40.5	0.7	71.5	1.6	45.0	0.9	21.0	0.4
Physical Education & Recreation	134.0	2.5	153.0	3.3	165.0	3.5	153.0	2.8
Political Science *					144.0	3.0	786.0	14.4
Psychology	361.0	6.6	240.0	5.2	282.0	6.0	276.0	5.1
Sociology	189.0	3.5	165.0	3.6	201.0	4.2	153.0	2.8
TOTAL	5455.5	100.0	4604.5	100.0	4739.0	100.0	5465.0	100.0

* There were no graduate courses in Political Science before the 1984-85 academic year.

FACTS ABOUT FACULTY AND STAFF

LIST OF TABLES AND FIGURES

<u>Instructional Faculty</u>		<u>Page</u>
TABLE	27: Instructional Staffing Patterns by Department and Rank, Fall 1977-1985	62
TABLE	28: Tenure for Full-Time Faculty by Department, Fall 1985	67
TABLE	29: Tenure for Full-Time Faculty by Rank and Sex, Fall 1981-1985	68
FIGURE	8: Ten-Year Change of Rank and Tenure Status Full-Time Faculty for 1975 and 1985	69
TABLE	30: Highest Earned Degree for Full-Time Faculty by Department, Fall 1985	70
TABLE	31: Summary of Highest Earned Degrees for Full-Time Faculty, 1973-1985	72
TABLE	32: Race and Sex of Full-Time Faculty by Department and Academic Rank, Fall 1985	73
TABLE	33: Summary of Race and Sex by Academic Rank for Full-Time Faculty, Fall 1985	78
TABLE	34: Mean Salaries by Rank, 1968-1985	79
TABLE	35: Mean Salaries of Professors by Race and Sex, 1974-1985	80
TABLE	36: Mean Salaries of Associate Professors by Race and Sex, 1974-1985	80
TABLE	37: Mean Salaries of Assistant Professors by Race and Sex, 1974-1985	81
TABLE	38: Mean Salaries of Instructors by Race and Sex, 1974-1985	81
TABLE	39: Summary of Mean Salaries by Rank, Race, and Sex, Fall 1985	82
TABLE	40: Comparison of Faculty Salaries by Rank for NCCU and Comparable Public Universities, 1985-1986	83
<u>ALL NCCU Faculty and Staff</u>		
TABLE	41: Full-Time EPA and SPA by Occupational Activity Category, Race, and Sex, Fall 1985	84
TABLE	42: New Full-Time Employees by Race and Sex, Fall 1985	85
TABLE	43: Retirements, Resignations and Dismissals of Full-Time Employees, Fall 1985	86
TABLE	44: Promotions of Full-Time Employees, Fall 1985	87
TABLE	45: Mean Salary by Occupational Activity Category, Race and Sex, Fall 1985	88
TABLE	46: Mean Salary of Selected Positions, Fall 1985	89

TABLE 27

INSTRUCTIONAL STAFFING PATTERNS BY
DEPARTMENT AND RANK, FALL 1977 - 1985

DEPARTMENT AND ACADEMIC RANK	1977	1982	1983	1984	1985		TOTAL	FTE
					FULL-TIME	PART-TIME		
ART								
Professor		1	1		4		4	4.0
Associate Professor	2	3	4	4	4		4	4.0
Assistant Professor	3	3	2	1	1	1	2	1.4
Instructor					2		2	2.0
Lecturer	6	1						
Adjunct or Visiting		1	1					
Total	11	9	8	5	11	1	12	11.4
BIOLOGY								
Professor	3	3	3	3	3		3	3.0
Associate Professor	5	5	5	5	7		7	7.0
Assistant Professor	3	2	2	2	3		3	3.0
Instructor					1	3	4	2.3
Lecturer	4	5	4	2	1		1	1.0
Adjunct or Visiting		3	1	4	1		1	1.0
Total	15	18	15	16	15	3	18	16.3
BUSINESS *								
Professor		2	2	4	3		3	3.0
Associate Professor		2	1	14	10		10	10.0
Assistant Professor		1	3	20	19		19	19.0
Instructor		2	2	3	2		2	2.0
Lecturer		1		2	4	1	5	4.8
Adjunct or Visiting			1	2				
Total		8	9	45	38	1	39	38.8
CENTER FOR ACADEMIC ENRICHMENT								
Professor					1		1	1.0
Associate Professor	1	1	2	1				
Assistant Professor	2		1	1				
Instructor	7	10	12	9	10		10	10.0
Lecturer	10	1			4		4	4.0
Adjunct or Visiting		7	5	2	1		1	1.0
Total	20	19	20	13	16		16	16.0
CHEMISTRY								
Professor	1	3	3	3	3		3	3.0
Associate Professor	3	2	2	2	2		2	2.0
Assistant Professor	1	1	1	1	1	1	2	1.3
Instructor								
Lecturer	2	2						
Adjunct or Visiting						1		
Total	7	8	6	6	6	1	7	6.3

* Prior to this year Business included the departments of Accounting, Economics/Finance, Education, Management and Marketing, and Business Education/Administrative Services. These are now included under the single listing of Business.

TABLE 27
(continued)

INSTRUCTIONAL STAFFING PATTERNS BY
DEPARTMENT AND RANK, FALL 1977 - 1985

DEPARTMENT AND ACADEMIC RANK	1977	1982	1983	1984	FULL-TIME	1985		TOTAL	FTE
						PART-TIME			
DRAMA								1	1.0
Professor		1	1	1	1			2	2.0
Associate Professor	1			2	2			2	2.0
Assistant Professor	1	3	3	1					
Instructor	3						1	1	.1
Lecturer	1	1							
Adjunct or Visiting					5	1		6	5.1
Total	6	5	4	4					
EDUCATION								8	8.0
Professor	8	6	6	9	8			8	8.0
Associate Professor	10	10	9	9	8		1	8	7.3
Assistant Professor	6	6	7	6	7				
Instructor		1			2			2	2.0
Lecturer	9	1	2	1	2			1	1.0
Adjunct or Visiting		4	3	1	1		1	27	26.3
Total	33	28	27	26	26				
ENGLISH								4	4.0
Professor	3	4	3	3	4			7	7.0
Associate Professor	7	8	8	8	7			9	9.0
Assistant Professor	6	5	7	8	9			1	1.0
Instructor	3				1				
Lecturer	6	3	3	1	1			1	1.0
Adjunct or Visiting		2		1	1			22	22.0
Total	25	22	21	21	22				
GEOGRAPHY								1	1.0
Professor		1	1	1	1			3	3.0
Associate Professor	3	3	3	3	3			1	1.0
Assistant Professor		1	1	1	1				
Instructor								1	1.0
Lecturer	2		1	1	1				
Adjunct or Visiting								6	6.0
Total	5	5	6	6	6				
HEALTH EDUCATION								1	1.0
Professor	1	1	1	1	1			1	1.0
Associate Professor		1	1	1	1			1	1.0
Assistant Professor					1			2	2.0
Instructor	3	3	3	3	2			1	.3
Lecturer	5	2	1				1		
Adjunct or Visiting		1						6	5.3
Total	9	8	6	5	5				

TABLE 27
(continued)

INSTRUCTIONAL STAFFING PATTERNS BY
DEPARTMENT AND RANK, FALL 1977 - 1985

DEPARTMENT AND ACADEMIC RANK	1977	1982	1983	1984	1985		TOTAL	FTE
					FULL-TIME	PART-TIME		
PHYSICS								
Professor	3	3	3	4	4		4	4.0
Associate Professor	1	1	1					
Assistant Professor								
Instructor								
Lecturer	3	1						
Adjunct or Visiting		3	1	1	1		1	1.0
Total	7	8	5	5	5		5	5.0
POLITICAL SCIENCE								
Professor	1		1	1	2		2	2.0
Associate Professor	2	4	4	6	4		4	4.0
Assistant Professor	5	4	3	3	6		6	6.0
Instructor					2		2	2.0
Lecturer	10	1	1	1	2	1	3	2.1
Adjunct or Visiting		2	2	1	1		1	1.0
Total	18	11	11	12	17	1	18	17.1
PSYCHOLOGY								
Professor				1	1		1	1.0
Associate Professor	3	3	3	3	3		3	3.0
Assistant Professor			1	1	2		2	2.0
Instructor		1	1	1				
Lecturer	2	3	1			1	1	.1
Adjunct or Visiting								
Total	5	7	6	6	6	1	7	6.1
SOCIOLOGY								
Professor	1	1	1	2	2		2	2.0
Associate Professor		3	3	2	2		2	2.0
Assistant Professor	4	3	2	2	4		4	4.0
Instructor								
Lecturer			1					
Adjunct or Visiting		1	1	1				
Total	5	8	8	7	8		8	8.0
SUMMARY BY RANK AND YEAR								
Professor	43	41	47	49	51		51	51.0
Associate Professor	68	88	82	84	84		84	84.0
Assistant Professor	82	84	94	90	110	3	113	110.9
Instructor	38	25	28	21	24	6	30	25.6
Lecturer	96	47	28	19	30	17	47	35.0
Adjunct or Visiting		39	20	17	15	1	16	15.8
GRAND TOTAL BY ACADEMIC YEAR	327	324	299	280	314	27	341	322.3

TABLE 28

TENURE FOR FULL-TIME FACULTY BY DEPARTMENT
FALL 1985

DEPARTMENT	TENURED	%	ON TENURE TRACK	%	NOT ON TRACK	%	TOTAL
Art	3	27.0	5	45.0	3	27.0	11
Biology	8	53.0	5	33.0	2	13.0	15
Business	12	32.0	22	58.0	4	10.0	38
Center for Academic Enrichment	1	6.0	1	6.0	14	88.0	16
Chemistry	5	83.0	1	17.0			6
Drama	1	20.0	4	80.0			5
Education	16	62.0	7	27.0	3	12.0	26
English	13	59.0	6	27.0	3	14.0	22
Geography	4	67.0	1	17.0	1	17.0	6
Health Education	4	80.0	1	20.0			5
History/Social Science	8	67.0	3	25.0	1	8.0	12
Home Economics	4	40.0	4	40.0	2	20.0	10
Law	7	32.0	7	32.0	8	36.0	22
Library Science	5	56.0	2	22.0	2	22.0	9
Mathematics	8	62.0	2	15.0	3	23.0	13
Modern Foreign Language	11	85.0			2	15.0	13
Music	8	67.0	3	25.0	1	8.0	12
Nursing	1	6.0	13	72.0	4	22.0	18
Philosophy	2	100.0					2
Physical Education	12	67.0	3	17.0	4	18.0	19
Physics	4	80.0			1	20.0	5
Political Science	7	41.0	6	35.0	4	24.0	17
Psychology	2	33.0	4	67.0			6
Sociology	4	50.0	4	50.0			8
SUMMARY	150	47.0	104	33.0	62	20.0	316

TABLE 29

TENURE FOR FULL-TIME FACULTY BY RANK AND SEX
FALL 1981 - 1985

ACADEMIC RANK AND YEAR	TOTAL	MALES		TOTAL	FEMALES		GRAND TOTAL	TOTALS	
		NUMBER WITH TENURE	PERCENT WITH TENURE		NUMBER WITH TENURE	PERCENT WITH TENURE		NUMBER WITH TENURE	PERCENT WITH TENURE
1981									
Professor	29	26	89.6	11	11	100.0	40	37	92.5
Associate Professor	56	24	42.8	29	16	55.2	85	40	47.1
Assistant Professor	37	20	54.0	37	14	37.8	74	34	45.9
Instructor	6	1	16.7	22	7	31.8	28	8	28.6
Lecturer	5			5			10		
Total	133	71	53.4	104	48	46.2	237	119	50.2
1982									
Professor	25	22	88.0	10	10	100.0	35	32	91.4
Associate Professor	55	24	43.6	28	17	60.7	83	41	49.4
Assistant Professor	38	18	47.4	41	15	36.6	79	33	41.8
Instructor	3	1	33.3	21	6	28.6	24	7	29.2
Lecturer	11			13			24		
Total	132	65	49.2	113	48	42.5	245	113	46.1
1983									
Professor	39	39	100.0	11	11	100.0	50	50	100.0
Associate Professor	61	35	57.4	30	23	76.7	91	58	63.7
Assistant Professor	51	23	45.1	52	15	28.8	103	38	36.9
Instructor	6	1	16.7	24	6	25.0	30	7	23.3
Lecturer	19	0	0	22	0	0	41	0	0
Total	176	98	55.7	139	55	39.6	315	153	48.6
1984									
Professor	38	37	97.0	11	11	100.0	49	48	98.0
Associate Professor	55	32	58.0	29	22	76.0	84	54	64.0
Assistant Professor	45	24	53.0	43	12	28.0	88	36	41.0
Instructor	5	2	40.0	14	5	36.0	19	7	37.0
Lecturer	3			1			4		
Other Faculty	3			11			14		
Total	149	95	64.0	109	50	46.0	258	145	56.0
1985									
Professor	39	36	92.3	12	12	100.0	51	48	94.1
Associate Professor	54	36	66.7	30	23	76.7	84	59	70.2
Assistant Professor	61	22	36.1	49	14	28.6	110	36	32.7
Instructor	7	2	28.6	17	5	29.4	24	7	29.2
Lecturer	14			16			30		
Other Faculty	4			11			15		
Total	179	96	53.6	135	54	40.0	314	150	47.8

Note: Data included in this table are for 9-month instructional faculty only. Those on leave are omitted.

Figure 8.

TEN-YEAR CHANGE OF RANK AND TENURE STATUS FULL-TIME FACULTY FOR 1975 AND 1985

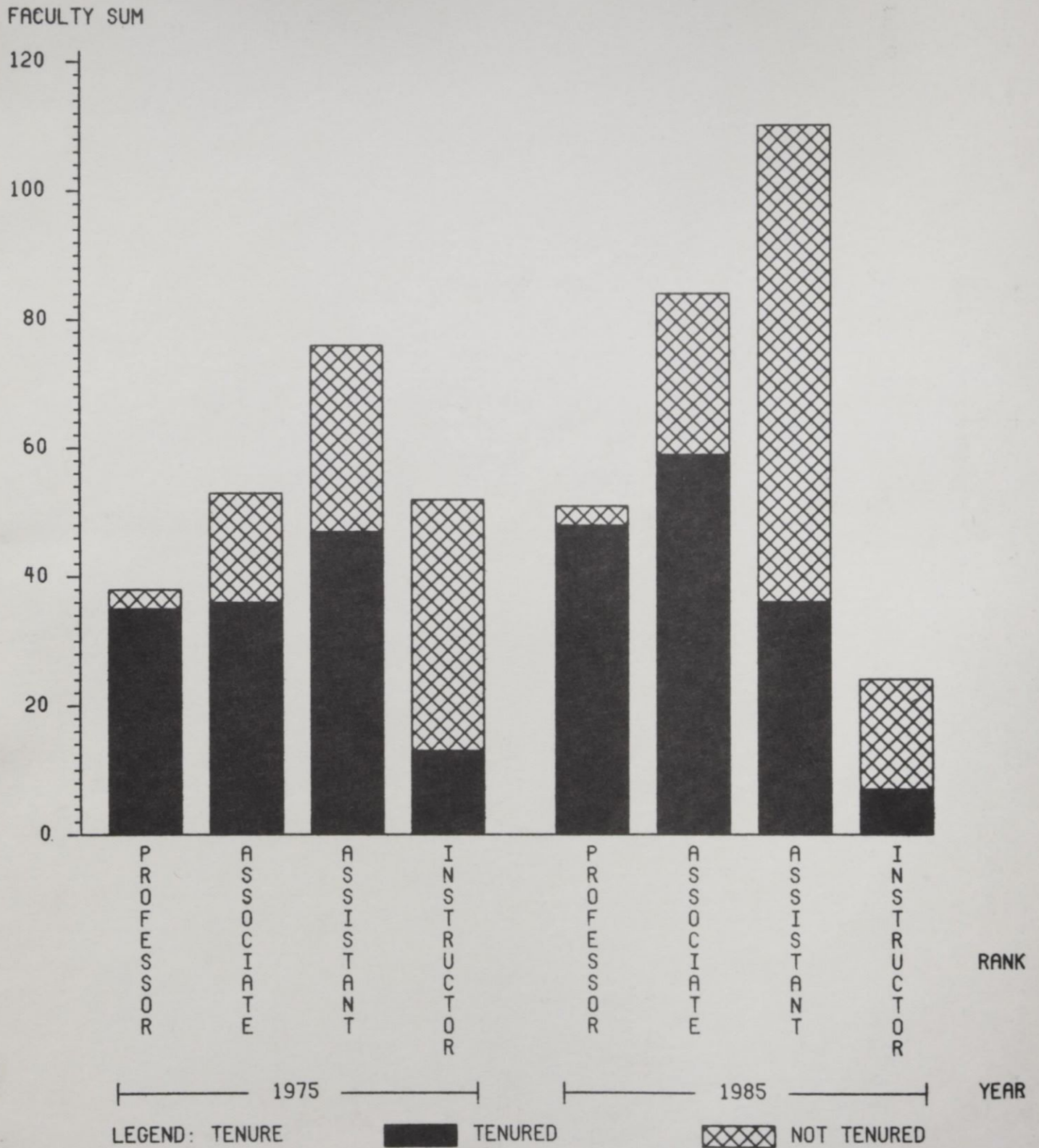


TABLE 30

HIGHEST EARNED DEGREE FOR FULL-TIME FACULTY
BY DEPARTMENT, FALL 1985

DEPARTMENT AND DEGREES	NUMBER	DEPARTMENT AND DEGREES	NUMBER
ART		LAW	
Doctor's	1	Doctor's	
Master's	9	Master's	21
Professional		Professional	
Bachelor's	1	Bachelor's	
BIOLOGY		LIBRARY SCIENCE	
Doctor's	14	Doctor's	6
Master's	1	Master's	3
Professional		Professional	
Bachelor's		Bachelor's	
BUSINESS		MATHEMATICS	
Doctor's	22	Doctor's	8
Master's	15	Master's	4
Professional	1	Professional	
Bachelor's		Bachelor's	1
CENTER FOR ACADEMIC ENRICHMENT		MODERN FOREIGN LANGUAGES	
Doctor's	1	Doctor's	6
Master's	13	Master's	7
Professional		Professional	
Bachelor's	2	Bachelor's	
CHEMISTRY		MUSIC	
Doctor's	5	Doctor's	7
Master's	1	Master's	4
Professional		Professional	
Bachelor's		Bachelor's	1
DRAMA		NURSING	
Doctor's	2	Doctor's	3
Master's	3	Master's	9
Professional		Professional	
Bachelor's		Bachelor's	5
EDUCATION		PHILOSOPHY	
Doctor's	21	Doctor's	1
Master's	4	Master's	
Professional		Professional	
Bachelor's		Bachelor's	1

TABLE 30 (CONTINUED)

HIGHEST EARNED DEGREE FOR FULL-TIME FACULTY
BY DEPARTMENT, FALL 1985

<u>DEPARTMENT AND DEGREES</u>	<u>NUMBER</u>	<u>DEPARTMENT AND DEGREES</u>	<u>NUMBER</u>
ENGLISH		PHYSICAL EDUCATION	
Doctor's	15	Doctor's	7
Master's	7	Master's	11
Professional		Professional	
Bachelor's		Bachelor's	1
GEOGRAPHY		PHYSICS	
Doctor's	6	Doctor's	5
Master's		Master's	
Professional		Professional	
Bachelor's		Bachelor's	
HEALTH EDUCATION		POLITICAL SCIENCE	
Doctor's	3	Doctor's	12
Master's	2	Master's	4
Professional		Professional	1
Bachelor's		Bachelor's	
HISTORY		PSYCHOLOGY	
Doctor's	8	Doctor's	6
Master's	4	Master's	
Professional		Professional	
Bachelor's		Bachelor's	
HOME ECONOMICS		SOCIOLOGY	
Doctor's	4	Doctor's	5
Master's	6	Master's	3
Professional		Professional	
Bachelor's		Bachelor's	

TABLE 31

SUMMARY OF HIGHEST EARNED DEGREES FOR
 FULL-TIME FACULTY
 1973 - 1985

DEGREE	1973		1978		1981		1982		1983		1984		1985	
	N	%	N	%	N	%	N	%	N	%	N	%	N	%
Doctor's	103	36.5	90	38.0	134	50.5	154	52.7	163	51.8	151	58.5	168	53.2
Master's	177	62.8	135	57.0	114	43.0	112	38.4	122	38.7	88	34.1	110	35.0
Bachelor's	2	.7	12	5.1	4	1.5	7	2.4	8	2.5	4	1.6	13	4.1
First Professional					13	5.0	19	6.5	20	6.4	15	5.8	24	7.6
Other									2	.6				
GRAND TOTALS	282	100	237	100	265	100	292	100	315	100	258	100	315	100

TABLE 32

RACE AND SEX OF FULL-TIME FACULTY BY
DEPARTMENT AND ACADEMIC RANK
FALL, 1985

DEPARTMENT AND ACADEMIC RANK	BLACK		WHITE		OTHER		TOTAL
	MEN	WOMEN	MEN	WOMEN	MEN	WOMEN	
<u>ART</u>							
Professor							
Associate Professor	1	1	1	1			4
Assistant Professor	2	1	1				4
Instructor	1						1
Lecturer				2			2
Adjunct or Visiting							
Total	4	2	2	3			11
<u>BIOLOGY</u>							
Professor	2			1			3
Associate Professor	4	1	1		1		7
Assistant Professor	1	2					3
Instructor							
Lecturer				1			1
Adjunct or Visiting				1			1
Total	7	3	1	3	1		15
<u>BUSINESS</u>							
Professor		1	1		1		3
Associate Professor	3	1	6				10
Assistant Professor	9	4	2		3	1	19
Instructor	1	1					2
Lecturer	1	2		1			4
Adjunct or Visiting							
Total	14	9	9	1	4	1	38
<u>CENTER FOR ACADEMIC ENRICHMENT</u>							
Professor							
Associate Professor			1				1
Assistant Professor							
Instructor	1	8		1			10
Lecturer	3	1					4
Adjunct or Visiting		1					1
Total	4	10	1	1			16
<u>CHEMISTRY</u>							
Professor	1		2				3
Associate Professor	1				1		2
Assistant Professor	1						1
Instructor							
Lecturer							
Adjunct or Visiting							
Total	3		2		1		6

TABLE 32
(continued)

RACE AND SEX OF FULL-TIME FACULTY BY
DEPARTMENT AND ACADEMIC RANK
FALL, 1985

DEPARTMENT AND ACADEMIC RANK	BLACK		WHITE		OTHER		TOTAL
	MEN	WOMEN	MEN	WOMEN	MEN	WOMEN	
<u>MODERN FOREIGN LANGUAGES</u>							
Professor	1						1
Associate Professor	1		2		1	1	5
Assistant Professor	1		1	3			5
Instructor							2
Lecturer				2			2
Adjunct or Visiting					1	1	2
Total	3		3	5	1	1	13
<u>MUSIC</u>							
Professor	1			1			2
Associate Professor		1	1	1			3
Assistant Professor	3	1	1				5
Instructor		1					1
Lecturer	1						1
Adjunct or Visiting							1
Total	5	3	2	2			12
<u>NURSING</u>							
Professor							3
Associate Professor		3					3
Assistant Professor	2	5		3			10
Instructor				1			1
Lecturer	1	1				1	3
Adjunct or Visiting							3
Total	3	9		4		1	17
<u>PHILOSOPHY</u>							
Professor							1
Associate Professor			1				1
Assistant Professor			1				1
Instructor							1
Lecturer							1
Adjunct or Visiting							1
Total			2				2

TABLE 32
(continued)

RACE AND SEX OF FULL-TIME FACULTY BY
DEPARTMENT AND ACADEMIC RANK
FALL, 1985

DEPARTMENT AND ACADEMIC RANK	BLACK		WHITE		OTHER		TOTAL
	MEN	WOMEN	MEN	WOMEN	MEN	WOMEN	
<u>PHYSICAL EDUCATION</u>							
Professor	1						1
Associate Professor	3			1			4
Assistant Professor	5	3		1			9
Instructor	2						2
Lecturer	1						1
Adjunct or Visiting	1	1					2
Total	13	4		2			19
<u>PHYSICS</u>							
Professor			3		1		4
Associate Professor					1		1
Assistant Professor							
Instructor							
Lecturer							
Adjunct or Visiting							
Total			3		2		5
<u>POLITICAL SCIENCE</u>							
Professor			1		1		2
Associate Professor	1		3				4
Assistant Professor	4		1	1			6
Instructor	1	1					2
Lecturer		1		1			2
Adjunct or Visiting				1			1
Total	6	2	5	3	1		17
<u>PSYCHOLOGY</u>							
Professor	1						1
Associate Professor	1		2				3
Assistant Professor	1	1					2
Instructor							
Lecturer							
Adjunct or Visiting							
Total	3	1	2				6
<u>SOCIOLOGY</u>							
Professor	1		1				2
Associate Professor	1		1				2
Assistant Professor	1	2	1				4
Instructor							
Lecturer							
Adjunct or Visiting							
Total	3	2	3				8

TABLE 33

SUMMARY OF RACE AND SEX BY
ACADEMIC RANK FOR FULL-TIME FACULTY
FALL, 1985

ACADEMIC RANK	BLACK				WHITE				OTHER				TOTAL			
	MALE		FEMALE		MALE		FEMALE		MALE		FEMALE		MALE		FEMALE	
	N	%	N	%	N	%	N	%	N	%	N	%	N	%	N	%
Professor	19	37.2	4	7.8	16	31.4	8	15.7	4	7.8			39	76.5	12	23.5
Associate Professor	26	30.9	16	19.0	25	29.8	13	15.5	3	3.6	1	1.2	54	64.3	30	35.7
Assistant Professor	46	41.8	37	33.6	12	10.9	10	9.9	3	2.7	2	1.8	61	55.4	49	44.5
Instructor	7	29.2	14	58.3			2	8.3			1	4.2	7	29.2	17	70.8
Lecturer	9	30.0	8	26.7	4	13.3	7	23.3	1	3.3	1	3.3	14	46.7	16	53.3
Adjunct or Visiting	3	20.0	5	33.3			6	40.0	1	6.7			4	26.7	11	73.3
GRAND TOTALS	110	35.0	84	26.7	57	18.1	46	14.6	12	3.8	5	1.6	179	57.0	135	43.0

TABLE 34

MEAN SALARIES BY RANK*
1968 - 1985

<u>YEAR</u>	<u>PROFESSOR</u>	<u>ASSOCIATE PROFESSOR</u>	<u>ASSISTANT PROFESSOR</u>	<u>INSTRUCTOR</u>
1968	\$13,221	\$11,208	\$8,972	\$7,474
1969	14,326	12,119	9,595	8,045
1970	15,952	13,326	10,222	8,045
1971	16,663	13,837	10,878	9,078
1972	17,588	14,321	11,248	9,698
1973	18,306	14,842	11,855	9,734
1974	19,353	16,150	13,012	10,950
1975	19,187	15,600	12,937	10,922
1976	20,777	17,069	14,073	11,928
1977	22,641	18,222	15,057	12,790
1978	24,874	19,492	16,240	13,921
1979	26,956	20,656	17,305	14,199
1980	29,735	23,027	19,337	15,415
1981	30,514	24,411	20,718	17,825
1982	31,558	25,491	22,123	18,545
1983	34,236	26,671	23,442	19,455
1984	36,350	29,319	26,456	21,847
1985	40,917	32,022	28,451	22,144

* Salary data adjusted to nine-month salary scales for full-time instructional faculty .

TABLE 35

MEAN SALARIES OF PROFESSORS*
BY RACE AND SEX, 1974 - 1985

YEAR	BLACK		WHITE		OTHER	
	MEN	WOMEN	MEN	WOMEN	MEN	WOMEN
1974	\$20,235	\$19,093	\$19,054	\$16,925	\$18,025	
1975	20,037	19,421	18,754	17,617	18,250	
1976	21,788	20,953	20,140	19,160	19,475	
1977	23,381	22,418	22,842	21,388	20,531	
1978	25,330	25,267	24,229	23,534	25,916	
1979	28,052	27,011	26,521	25,321	25,508	
1980	30,879	31,545	28,834	28,059	29,539	
1981	32,066	31,019	30,257	27,988	29,287	
1982	32,505	32,370	31,742	29,387	30,961	
1983	36,163	33,975	33,737	32,367	31,620	
1984	36,533	35,147	37,284	35,775	36,205	
1985	41,373	38,867	42,113	40,182	37,482	

TABLE 36

MEAN SALARIES OF ASSOCIATE PROFESSORS*
BY RACE AND SEX, 1974 - 1985

YEAR	BLACK		WHITE		OTHER	
	MEN	WOMEN	MEN	WOMEN	MEN	WOMEN
1974	\$16,875	\$16,261	\$16,366	\$14,791	\$16,900	\$14,700
1975	16,053	16,567	15,620	14,923	16,800	14,700
1976	17,322	17,137	17,615	15,949	17,922	16,188
1978	19,726	19,185	20,357	18,358	19,164	18,674
1979	21,128	20,545	21,598	19,100	19,409	20,208
1980	24,039	21,832	23,667	22,157	19,856	23,229
1981	25,272	23,420	24,877	23,439	23,528	
1982	26,318	24,855	26,035	24,773	22,228	24,810
1983	27,762	26,746	26,843	24,517	25,583	25,705
1984	30,485	29,796	29,458	27,096	26,570	28,275
1985	33,399	32,489	31,814	29,638	29,483	32,603

* Salary data adjusted to nine-month salary scales for full-time instructional faculty .

TABLE 37

MEAN SALARIES OF ASSISTANT PROFESSORS*
BY RACE AND SEX, 1974 - 1985

YEAR	BLACK		WHITE		OTHER	
	MEN	WOMEN	MEN	WOMEN	MEN	WOMEN
1974	\$13,706	\$12,822	\$12,454	\$11,931		
1975	13,489	12,952	12,420	11,694		
1976	14,708	13,559	13,717	11,871	16,000	
1977	15,624	14,823	14,589	14,462	17,040	
1978	16,524	16,016	16,329	15,732	17,000	
1979	17,488	17,187	17,336	16,722	17,900	
1980	19,999	19,379	18,940	17,455	18,480	
1981	21,383	20,456	20,142	19,820		
1982	22,546	21,874	22,489	21,133	21,924	24,045
1983	23,704	23,398	23,580	22,400	25,758	21,986
1984	26,813	26,098	26,608	24,292	32,390	27,548
1985	28,663	27,879	28,549	25,924	36,984	33,403

TABLE 38

MEAN SALARIES OF INSTRUCTORS*

YEAR	BLACK		WHITE		OTHER	
	MEN	WOMEN	MEN	WOMEN	MEN	WOMEN
1974	\$11,394	\$11,005	\$9,600	\$9,800		
1975	11,132	10,935	10,260	11,450		
1976	12,467	11,983	10,910	12,208		10,781
1977	12,782	12,843	12,972	11,751		13,308
1978	14,708	13,753	14,064	13,117	16,000	13,308
1979	14,674	13,992	15,883	14,020		11,550
1980	12,694	15,844	16,188	16,408		13,705
1981	17,115	17,664	20,221	19,101		
1982	17,821	18,662	17,236	19,941		15,860
1983	17,364	19,736	19,560	20,125		17,010
1984	20,541	22,659	20,252	22,063		18,711
1985	19,143	23,334		24,599		21,583

* Salary data adjusted to nine-month salary scales for full-time instructional faculty.

TABLE 39

SUMMARY OF MEAN SALARIES* BY RANK,
RACE, AND SEX, FALL 1985

ACADEMIC RANK	BLACK				WHITE				OTHER			
	<u>N</u>	<u>MEN</u> <u>MEAN</u>	<u>N</u>	<u>WOMEN</u> <u>MEAN</u>	<u>N</u>	<u>MEN</u> <u>MEAN</u>	<u>N</u>	<u>WOMEN</u> <u>MEAN</u>	<u>N</u>	<u>MEN</u> <u>MEAN</u>	<u>N</u>	<u>WOMEN</u> <u>MEAN</u>
Professor	19	\$41,373	4	\$38,867	16	\$42,113	8	\$40,182	4	\$37,482		
Associate Professor	26	33,399	16	32,489	25	31,814	13	29,638	3	29,483	1	**
Assistant Professor	46	28,663	37	27,879	12	28,549	10	25,924	3	36,984	2	**
Instructor	7	19,143	14	23,334			2	**			1	**
Lecturer	9	11,967	8	15,464	4	16,463	7	14,341	1	**	1	**
Adjunct or Visiting	3	40,833	5	26,924			6	22,623	1	**	1	**

* Salary data adjusted to nine-month salary scales for full-time instructional faculty.

** Salary means are omitted for cells with less than three persons.

TABLE 40

COMPARISON OF FACULTY SALARIES BY RANK
FOR NCCU AND COMPARABLE PUBLIC UNIVERSITIES

1985 - 86

<u>RANK</u>	<u>NCCU</u>	<u>COMPARABLE UNIVERSITIES*</u>
Professor	40,917	39,720
Associate Professor	32,022	31,580
Assistant Professor	28,451	25,950
Instructor	22,144	20,820

* Public, Comprehensive IIA Institutions

SOURCE:
THE CHRONICLE OF HIGHER EDUCATION
April 23, 1986, page 25.

TABLE 9
 RETIREMENTS, RESIGNATIONS AND DISMISSALS
 OF FULL-TIME EMPLOYEES
 FALL, 1985

OCCUPATIONAL ACTIVITY CATEGORY	BLACK		WHITE		OTHER		TOTAL	
	MEN	WOMEN	MEN	WOMEN	MEN	WOMEN	MEN	WOMEN
EXECUTIVE, ADMINISTRATIVE & MANAGERIAL	5	1					5	1
NUMBER OF PERSONS ABOVE WITH ACADEMIC RANK	1	1					1	1
NUMBER OF PERSONS ABOVE WITH TENURE	1						1	
INSTRUCTIONAL FACULTY (TENURED)	1	2	2				3	2
PROFESSORS	1		1				2	
ASSOCIATE PROFESSORS			1				1	
ASSISTANT PROFESSORS		1						1
INSTRUCTORS		1						1
LECTURERS								
INSTRUCTIONAL FACULTY (NON-TENURED BUT ON TRACK)		2		2				4
PROFESSORS								
ASSOCIATE PROFESSORS								
ASSISTANT PROFESSORS		2		2				4
INSTRUCTORS								
LECTURERS								
INSTRUCTIONAL FACULTY (NOT ON TENURE TRACK)	3	3		3	1		4	6
PROFESSORS								
ASSOCIATE PROFESSORS				1				1
ASSISTANT PROFESSORS								1
INSTRUCTORS		1						1
LECTURERS	2	2		2			2	4
ADJUNCT FACULTY	1				1		2	
PROFESSIONAL	1	9		1		2	1	12
SECRETARIAL & CLERICAL	3	62			1	1	4	63
TECHNICAL & PARAPROFESSIONAL	2	10		1			2	11
SKILLED CRAFTS	8		2					10
SERVICE & Maintenance	27	20	1				28	20
TOTAL	50	109	5	7	2	3	57	119

98

TABLE 44

PROMOTIONS OF FULL-TIME EMPLOYEES
FALL, 1985

OCCUPATIONAL ACTIVITY CATEGORY	BLACK		WHITE		OTHER		TOTAL	
	MEN	WOMEN	MEN	WOMEN	MEN	WOMEN	MEN	WOMEN
EXECUTIVE, ADMINISTRATIVE & MANAGERIAL NUMBER OF PERSONS ABOVE WITH ACADEMIC RANK NUMBER OF PERSONS ABOVE WITH TENURE		1						1
INSTRUCTIONAL FACULTY (TENURED)	2				2		4	
PROFESSORS	2				1		3	
ASSOCIATE PROFESSORS					1		1	
ASSISTANT PROFESSORS								
INSTRUCTORS								
LECTURERS								
INSTRUCTIONAL FACULTY (NON-TENURED BUT ON TRACK)	2	3	1				3	3
PROFESSORS			1				1	
ASSOCIATE PROFESSORS								
ASSISTANT PROFESSORS	2	3					2	3
INSTRUCTORS								
LECTURERS								
INSTRUCTIONAL FACULTY (NOT ON TENURE TRACK)					1			1
PROFESSORS								
ASSOCIATE PROFESSORS								
ASSISTANT PROFESSORS								
INSTRUCTORS								
LECTURERS					1			1
PROFESSIONAL	1	1					1	1
SECRETARIAL & CLERICAL	1	9					1	9
TECHNICAL & PARAPROFESSIONAL	1	2					1	2
SKILLED CRAFTS	2						2	
SERVICE & MAINTENANCE	5						5	
TOTAL	14	15	1	1	2		17	16

TABLE 45

MEAN SALARY* BY OCCUPATIONAL ACTIVITY CATEGORY,
RACE, AND SEX
FALL, 1985

OCCUPATIONAL ACTIVITY CATEGORY	BLACK				WHITE				OTHER			
	N	MEAN	N	MEAN	N	MEAN	N	MEAN	N	MEAN	N	MEAN
EXECUTIVE, ADMINISTRATIVE & MANAGERIAL	29	\$43,643	12	\$35,207	4	\$35,586	3	\$46,297	1	*		
PROFESSIONAL	25	21,819	50	21,742	5	24,553	2	*	1	*	2	*
TECHNICAL & PARAPROFESSIONAL	28	17,449	28	16,267	1	*						
SECRETARIAL & CLERICAL	21	13,804	197	14,811	2	*	1	*	1	*	1	*
SKILLED CRAFTS	34	17,282	4	17,133	2	*						
SERVICE & MAINTENANCE	102	10,966	49	10,294	1	*	1	*				

*Salaries have been omitted from cells with less than three persons.
Instructional faculty are excluded.

TABLE 46
MEAN SALARY OF SELECTED POSITIONS
FALL, 1985

<u>OCCUPATIONAL ACTIVITY CATEGORY</u>	<u>NUMBER</u>	<u>MEAN SALARY</u>
EXECUTIVE OFFICERS	8	\$56,733
DEANS	5	57,942
ASSISTANT DEANS	6	42,943
DIRECTORS	25	37,585
CHAIRPERSONS	21	42,159

APPENDIX

The data used in this book were abstracted from annual North Carolina Higher Education Data Survey forms (NCHED), the Department of Education Higher Education General Information Survey forms (HEGIS), and the Office for Civil Rights (OCR) reports. The sources of basic data for each section are listed below.

ENROLLMENT

- NCHED A-1.1 Resident Credit Enrollment, Fall 1985
- HEGIS 2300-2.3 Fall Enrollment and Compliance Report of Institutions of Higher Education, 1985
- NCHED A-1.6 Survey of Enrollment by Age, Fall 1985
- NCHED A-1.3 "Home Base" of Students, Fall 1985

FACTS, 1984-1985

N. C. C. U. Freshmen Surveys. Conducted by the Office of Research, Evaluation and Planning

ADMISSIONS

- OCR B1 Students in Institutions of Higher Education - Applications, Acceptances and Actual Enrollment, Fall 1985
- NCHED A-4 First Time Freshmen Admissions, Fall 1985
- NCHED A-1.2 New Undergraduate Transfer Students, Fall 1985
- NCHED A-7 Student Retention Data Survey, Fall 1985

FACTS, 1984-1985

Separate Analyses done by the Office of Institutional Studies

DEGREES CONFERRED

- HEGIS 2300-2.1 Degrees and Other Formal Awards Conferred, 1985
- NTE Yearly Reports to the Education Department, 1985

Appendix (Continued)

FACTS: 1984-1985

Separate Analyses done by the Office of Institutional Studies

FINANCIAL AID

NCHED A-10

Student Financial Aid Summary, Fall 1985

OCR B3

Financial Assistance to Students in Institutions of Higher Education, Fall 1985

FACTS: 1984-1985

INSTRUCTIONAL FACULTY

HEGIS 2300-3

Salaries, Tenure and Fringe Benefits of Full-Time Instructional Faculty, 1985

FACTS: 1984-1985

Separate Analyses done by the Office of Institutional Studies

The Chronicle of Higher Education, April 23, 1986.

FACULTY AND STAFF

OCR A1A

Employees in Institutions of Higher Education, Fall 1985

OCR A1B

New Employees in Institutions of Higher Education, Fall 1985

OCR A3

Retirements, Resignations and Dismissals of Employees in Institutions of Higher Education, Fall 1985

OCR A4

Promotions of Employees in Institutions of Higher Education, Fall 1985

FACTS: 1984-1985

Separate Analyses done by the Office of Institutional Studies

Appendix (continued)

UNIVERSITY RESOURCES

- NCHED A-11 Report on Sources and Uses of University Current and Plant Funds, Fiscal Year 1984-1985
- HEGIS 2300-4 Financial Statistics of Institutions of Higher Education for Fiscal Year Ending 1985
- NCHED A-6 College and University Libraries, Fall 1985
- North Carolina Facilities Inventory and Utilization Reports - 1985. Prepared by the Office of Institutional Studies
- FACTS: 1984-1985