

FACTS

1984 - 1985



North Carolina Central University

OFFICE OF RESEARCH, EVALUATION
AND PLANNING
DURHAM, NORTH CAROLINA

SEVENTY - FIFTH ANNIVERSARY EDITION

Our campus then...



This Fayetteville Street photograph taken in the mid 1920's shows Avery Auditorium (partially cut off) on the extreme right (current site of the Biology Building), old Chidley Hall behind Avery (current site of the Chemistry Building), the Boys' Dorm (current site of the Science Building), and faculty cottages lining the drive which now leads to the current Administration Building.

Herein, fifty years later, FACTS 1984-85 presents our University now...

Our company's vision...

[Faint, illegible text block]

[Faint, illegible text block]

[Faint, illegible text block]

FACTS

1984-85

BY

JAMES W. PIERCE
KAREN M. GENTEMANN
LINDA K. PRATT

TECHNICAL PRODUCTION

HELEN FAUCETTE
JOAN WELLS

OFFICE OF RESEARCH, EVALUATION, AND PLANNING
NORTH CAROLINA CENTRAL UNIVERSITY
DURHAM, NORTH CAROLINA 27707

MAY, 1985

TABLE OF CONTENTS

	<u>Page</u>
<u>List of Tables and Figures</u>	ii
<u>Preface</u>	iv
<u>Facts About the University</u>	
List of Tables	1
Purpose and History	2
Non-Discrimination Statement of Policy	5
High Priority Goals	6
Accreditation	9
Degree Programs and Program Tracks	10
Organization Chart	16
University of North Carolina Board of Governors	17
University of North Carolina Officers of General Administration	18
North Carolina Central University Board of Trustees	21
North Carolina Central University Officers and Administrative Staff	22
<u>Facts About Students</u>	
List of Tables and Figures	33
<u>Facts About Faculty and Staff</u>	
List of Tables and Figures	61
<u>Appendix</u>	88

LIST OF TABLES AND FIGURES

		<u>Page</u>
Facts About the University		
TABLE	1: Characteristics of NCCU Facilities, Fall 1984	25
TABLE	2: Revenues, Expenditures for Fiscal Year, 1983-84	28
TABLE	3: Assets for Fiscal Year, 1983-84	29
FIGURE	1: Five-Year Comparison of University Expenditures By Area	30
TABLE	4: Student Tuition, Fees and Charges for the 1984-85 Academic Year	31
TABLE	5: Library Collections and Expenditures, Fall 1984	32
Facts About Students		
TABLE	6: Number of Student Applications, Acceptances and Enrollees, Fall 1984	35
FIGURE	2: Five-Year Comparison of Undergraduate Applicants, Acceptances and Enrollees	36
FIGURE	3: Five-Year Comparison of Graduate and First Professional Applicants, Acceptances and Enrollees	37
TABLE	7: Mean SAT Scores of Entering Freshmen, 1964-1984	38
TABLE	8: High School Class Rank of Entering Freshmen, 1974-1984	39
TABLE	9: Undergraduate Transfers Into NCCU, 1968-1984	40
TABLE	10: General Characteristics of Enrollment, 1982-1984	41
TABLE	11: Sex Distribution of Headcount Enrollment, 1926-1984	42
TABLE	12: Racial Composition of Headcount Enrollment, 1976- 1984	43
TABLE	13: Mean Age of Enrolled Students, 1975-1984	44
TABLE	14: Undergraduate Enrollment by Age, 1984	45
FIGURE	4: Five-Year Comparison of Traditional Versus Non- Traditional Undergraduate Students	46
TABLE	15: Graduate and First Professional Enrollment by Age, 1984	47
TABLE	16: Geographic Origin of Students, 1968-1984	48
TABLE	17: Distribution of Students by State, Fall 1984	49
FIGURE	5: Geographic Origin by State of North Carolina Central University Undergraduate and Graduate Students, 1984-85	50
FIGURE	6: Geographic Origin by County of North Carolina Central University Undergraduate and Graduate Students, 1984-85	51
TABLE	18: Distribution of North Carolina Students by County, Fall, 1984	52
TABLE	19: Students Enrolled, Graduated, Suspended, and Not Enrolled After Initial Entry Year	53
TABLE	20: First Time North Carolina Central University Freshmen Enrolled or Graduated	54

LIST OF TABLES AND FIGURES (Continued)

		<u>Page</u>
TABLE	21: First Time Freshmen in The University of North Carolina System Enrolled or Graduated	55
TABLE	22: Undergraduate Degrees Conferred by Field of Study, 1967-1984	56
TABLE	23: Graduate Degrees Conferred by Field of Study, 1967-1984	58
TABLE	24: Student Financial Aid, 1983-1984	59
TABLE	25: Financial Aid Awards, 1980-1984	60
Facts About Faculty and Staff		
TABLE	26: Instructional Staffing Patterns by Department and Rank, Fall 1972-1984	62
TABLE	27: Faculty, 1968-1984	67
TABLE	28: Tenure for Full-Time Faculty by Rank and Sex, Fall 1980-1984	68
FIGURE	7: Ten-Year Change of Rank and Tenure Status Full-Time Faculty for 1974 and 1984	69
TABLE	29: Highest Earned Degree for Full-Time Faculty by Department, Fall 1984	70
TABLE	30: Summary of Highest Earned Degrees for Full-Time Faculty, 1968-1984	72
TABLE	31: Race and Sex of Full-Time Faculty by Department and Academic Rank, Fall 1984	73
TABLE	32: Summary of Race and Sex by Academic Rank for Full-Time Faculty, Fall 1984	77
TABLE	33: Mean Salaries by Rank, 1968-1984	78
TABLE	34: Mean Salaries of Professors by Race and Sex, 1974-1984	79
TABLE	35: Mean Salaries of Associate Professors by Race and Sex, 1974-1984	79
TABLE	36: Mean Salaries of Assistant Professors by Race and Sex, 1974-1984	80
TABLE	37: Mean Salaries of Instructors by Race and Sex, 1974-1984	80
TABLE	38: Summary of Mean Salaries by Rank, Race, and Sex, Fall 1984	81
TABLE	39: Full-Time EPA and SPA by Occupational Activity Category, Race, and Sex, Fall 1984	82
TABLE	40: New Full-Time Employees by Race and Sex, Fall 1984	83
TABLE	41: Retirements, Resignations and Dismissals of Full-Time Employees, Fall 1984	84
TABLE	42: Promotions of Full-Time Employees, Fall 1984	85
TABLE	43: Mean Salary by Occupational Activity Category, Race and Sex, Fall, 1984	86
TABLE	44: Mean Salary of Selected Positions, Fall 1984	87

PREFACE

FACTS is the North Carolina Central University fact book which has been published by the Office of Research, Evaluation, and Planning yearly since 1969. During this sixteen-year period, the format changed from a page-substitution looseleaf style to a printed, bound document; the name of the document, originally FACT BOOK, changed to FACTS in 1983-84; and the Office of Research and Evaluation which originally produced the FACT BOOK became the Office of Research, Evaluation, and Planning in 1975.

The purpose of the document has not changed, however. FACTS is designed to provide the University community with accurate, useful information and to provide a common source of data for internal planning and for release to outside agencies. Every effort is made to ensure the consistency and accuracy of the data and to ensure that data reported in FACTS are consistent with the data officially reported to state and federal agencies.

Over the last four years, an effort has been made to make FACTS a more useful planning document. As part of that effort, more tables contain trend data, and new charts, maps and graphs are being added each year. Although an effort has been made to keep the table formats similar from year to year, FACTS is an evolving document and any suggestions for additions or changes are welcome.

While the entire office staff was involved in producing FACTS 1984-85, special recognition goes to Mr. James Pierce who coordinated the entire effort; to Mrs. Helen Faucette who updated most tables and tirelessly checked and rechecked the drafts; to Miss Joan Wells who typed the introductory pages, entered most of the data for the tables into the computer and assisted in printing the final version; and to Dr. Karen Gentemann who updated and revised the lists of administrators and board members, the accreditation statement and several other parts of the FACTS About the University section. All of these persons, working as a team share credit for the final document.

Linda Pratt

Linda K. Pratt
Associate Vice-Chancellor for
Academic Affairs for Research,
Evaluation, and Planning

FACTS ABOUT THE UNIVERSITY

LIST OF TABLES

		<u>Page</u>
TABLE	1: Characteristics of NCCU Facilities, Fall 1984	25
TABLE	2: Revenues and Expenditures for Fiscal Year, 1983-84	28
TABLE	3: Assets for Fiscal Year, 1983-84	29
FIGURE	1: Five-Year Comparison of University Expenditures by Area	30
TABLE	4: Student Tuition, Fees and Charges for the 1984-85	31
TABLE	5: Library Collections and Expenditures, Fall 1984	32

PURPOSE OF THE UNIVERSITY

North Carolina Central University offers undergraduate instruction in the arts and sciences and in business and education. In addition, it conducts a number of graduate programs leading to the master's degree in these areas. The University offers post-graduate, first-degree professional programs through its Schools of Law and Library Science.

The University's authority to offer instruction and to confer degrees derives from The University of North Carolina through its Board of Governors, under the legislation which created the unified University of North Carolina on October 30, 1971.

Through the undergraduate program (and to some extent through the graduate and professional programs) attention is directed to the achievement of the following:

1. Development of perspective and intellectual strength for the endeavors of a lifetime.
2. Acquaintance with our cultural heritage as a background for understanding and relating to the existing social order.
3. Provision of a climate for high-quality learning with special emphasis on education for knowledge and an intelligent, responsive participation in the home, the community, and a career.
4. A liberal education with a number of opportunities in specialized education so that students are prepared to pursue various professional careers with confidence and competence.
5. Recognition of the need for continuous learning throughout one's life in order to be effective, responsible citizens in a rapidly changing society.

HISTORY

North Carolina Central University, a state-supported liberal arts institution, was chartered in 1909 as a private institution and opened to students on July 10, 1910. It was founded by Dr. James E. Shepard. From the beginning, when it was known as the National Religious Training School and Chautauqua, its purpose has been the development in young men and women of the character and sound academic training requisite for real service to the nation. To this end, the training of all students has been entrusted to the most capable teachers available.

The institution's early years were characterized by a wealth of enthusiasm and high endeavor, but not of money. Private donations and student fees constituted the total financial support of the school, and the heavy burden of collecting funds rested on the President.

In 1915 the school was sold and reorganized, then becoming the National Training School. During this period of its history Mrs. Russell Sage of New York was a generous benefactor of the school.

In 1923 the General Assembly of North Carolina appropriated funds for the purchase and maintenance of the school; thus in that year it became a publicly-supported institution, and was renamed Durham State Normal School. Two years later the Legislature converted it into the North Carolina College for Negroes, dedicating it to the offering of liberal arts education and the preparation of teachers and principals of secondary schools.

At its 1927 session the General Assembly began a program of expansion of the college plant to conform to the needs of an enlarged academic program. The interest of the Honorable Angus W. McLean, then Governor of North Carolina, and his belief in the institution aided greatly in the promotion of this program. State appropriations were supplemented by a generous gift from B. N. Duke, and by contributions from citizens of Durham in 1929.

The College was accredited by the Southern Association of Colleges and Secondary Schools as an "A" class institution in 1937 and was admitted to membership in this association in 1957. It has since been approved by the Association of American Universities and the National Council for the Accreditation of Teacher Education and holds an "A" rating with the American Medical Association and the North Carolina State Department of Public Instruction.

The 1930's afforded federal grants and State appropriations for a new program of physical expansion and improvement of educational facilities; this program continued until the beginning of World War II.

The General Assembly of 1939 authorized the establishment of graduate work in liberal arts and the professions. Pursuant thereto graduate courses in the Arts and Sciences were first offered in that same year; the School of Law began operation in 1940, and the School of Library Science was established in 1941.

In 1947 the State Legislature changed the name of the institution to the North Carolina College at Durham.

On October 6, 1947, Dr. James E. Shepard, the founder and President of the college, died. The Board of Trustees appointed an interim committee consisting of Dr. Albert E. Manley, Dean of the College of Arts and Sciences; Miss Ruth G. Rush, Dean of Women; and Dr. Albert L. Turner, Dean of the School of Law, to administer the affairs of the institution until the election of the second president.

On January 20, 1948, Dr. Alfonso Elder was elected President of the institution. At the time of his election, Dr. Elder was serving as head of the Graduate Department of Education and had formerly been Dean of the College of Arts and Sciences. Dr. Elder retired September 1, 1963.

On August 9, 1963, Dr. Samuel P. Massie was elected as the third President of the College and assumed the office on September 1, 1963. Dr. Massie came to the institution from Washington, D. C., where he was Associate Program Director for Undergraduate Science Education of the National Science Foundation and Professor and Chairman of the Department of Pharmaceutical Chemistry at Howard University. He resigned on February 1, 1966.

The Board of Trustees appointed an interim committee consisting of William Jones, Business Manager; Dr. Helen G. Edmonds, Graduate Dean; and Dr. William H. Brown, Professor of Education, to administer the affairs of the institution until the fourth president took office.

On July 20, 1966, Dr. Albert N. Whiting was named fourth president of the institution. He came to North Carolina College from Baltimore, Maryland, where he had been Dean of Faculty of Morgan State College. Dr. Whiting served as President from July 1, 1967 until June 30, 1983.

In 1969, during Dr. Whiting's term of office, the State Legislature again changed the name of the institution to North Carolina Central University. On July 1, 1972, North Carolina Central University became a constituent institution of the University of North Carolina.

On July 1, 1983, Dr. LeRoy T. Walker, became Interim Chancellor of the University. He has also served the institution as Chairman of the Department of Physical Education and Recreation, Head Track Coach and Vice Chancellor for University Relations.

NON-DISCRIMINATION STATEMENT OF POLICY

NORTH CAROLINA CENTRAL UNIVERSITY is committed to equality of educational opportunity and does not discriminate against applicants, students, or employees based on race, color, national origin, religion, sex, age, or handicap. Moreover, NORTH CAROLINA CENTRAL UNIVERSITY is open to people of all races and actively seeks to promote racial integration by recruiting and enrolling a larger number of white students.

NORTH CAROLINA CENTRAL UNIVERSITY supports the protections available to members of its community under all applicable Federal laws, including Titles VI and VII of the Civil Rights Act of 1964, Title IX of the Education Amendments of 1972, Sections 799A and 845 of the Public Health Service Act, the Equal Pay and Age Discrimination Acts, the Rehabilitation Act of 1973, and Executive Order 11246. For information concerning these provisions, contact: Director of Affirmative Action, Room 201, Administration Building, North Carolina Central University, Durham, North Carolina 27707, Telephone 683-6254 or 683-6472.

HIGH PRIORITY GOALS
ACCORDING TO PROGRAM CLASSIFICATION STRUCTURE

I. INSTITUTIONAL ADMINISTRATION PROGRAM (6.0)

To assure the organizational effectiveness and continuity of NCCU by (1) providing for planning and executive direction, (2) providing for administrative and logistical services, (3) enhancing relationships with NCCU's constituencies, (4) providing services and conveniences for the employees and students of NCCU, and (5) recruiting, admitting and retaining students in the NCCU educational program by accomplishing the following objectives:

*1. Improving the enrollment management procedure including identifying prospective students, developing an effective marketing and recruiting strategy, admitting students with good chances of academic success and retaining those students to graduation.

*2. Improving and upgrading the administrative data processing service to provide timely and accurate information for use by the business offices, the Registrar's office, all offices working with student admissions, and the various academic units on the campus.

3. To acquire the resources necessary to support teaching, research, and learning, both directly through the administration's own efforts and indirectly through provision of information on funding sources and other matters to faculty and students.

II. INSTRUCTION PROGRAM (1.0)

To elicit, through an organized instructional program, some measure of education **progress** in students at NCCU. Educational **progress** includes (1) the acquisition of improved understanding of some portion of the body of knowledge, (2) the adoption of new or different attitudes and (3) the acquisition of increased mastery of a skill or set of skills by:

*4. Maintaining and improving access to computer training, equipment, software and technical support for students in all schools and academic disciplines.

III. STUDENT FINANCIAL SUPPORT PROGRAM (8.0)

To provide financial assistance to students in the form of outright grants, trainee stipends, and prizes awarded by and/or administered through NCCU.

IV. ACADEMIC SUPPORT PROGRAM (4.0)

To support directly one or more of the three primary programs (Instruction, Research, Public Service) by carrying out activities (1) related to the preservation, maintenance and display of both the stock of knowledge and of related

*Goals identified as high priority for the 1985-87 biennium.

educational material, (2) that directly contribute to the way in which instruction is delivered or research is conducted, (3) directly related to the administration of academic programs, and (4) related to the professional development of academic personnel.

V. PHYSICAL PLANT OPERATIONS PROGRAM (7.0)

To maintain existing grounds and facilities, provide utility services, and plan and design future plant expansions and modifications.

VI. STUDENT SERVICE PROGRAM (5.0)

To contribute to the emotional and physical well-being of the students as well as to their intellectual, cultural and social development outside the context of the formal instruction program.

ACCREDITATION

North Carolina Central University is accredited by the Commission on Colleges of the Southern Association of Colleges and Schools, an accrediting body recognized by the Council on Postsecondary Accreditation and the U.S. Department of Education.

The School of Law is accredited by the American Bar Association. The program in Library Science is accredited by the American Library Association, and the program in Nursing by the Accrediting Services, National League for Nursing, Inc. Programs at the bachelor's and master's levels in early childhood education, elementary teaching, secondary teaching, and K-12 teaching; and at the master's level in educational communications and information technology, school principalship, supervision/curriculum development, and guidance counseling are accredited by the National Council for Accreditation of Teacher Education. All of these specialized accrediting bodies are recognized by the Council on Postsecondary Accreditation and the U.S. Department of Education.

Teacher Education programs are approved by the North Carolina State Department of Public Instruction. The North Carolina Board of Nursing approves the Nursing Program. The School of Law is approved by the North Carolina State Bar Council.

DEGREE PROGRAMS AND PROGRAM TRACKS

North Carolina Central University is authorized to offer degree programs in 16 discipline divisions at the baccalaureate, master's and professional levels. The programs and program tracks under each of these divisions with program titles, degrees, and tracks are as follows:

HEGIS CODE	DIVISION AND PROGRAM TITLE	DEGREE LEVEL*	DEGREE	PROGRAM TRACK
<u>BIOLOGICAL SCIENCES</u>				
0401	Biology, General	B	B.S.	Biology
		B	B.S.	Biology, Secondary Education
		M	M.S.	Biology
		M	M.S.	Biology, Secondary Education
<u>BUSINESS AND MANAGEMENT</u>				
0502	Accounting	B	B.B.A.	Accounting
0506	Business Management and Administration	B	B.B.A.	Business Administration
		M	M.B.A.	Business Administration
0517	Business Economics	B	B.B.A.	Economics
		B	B.A.	Economics
<u>COMPUTER & INFORMATION SCIENCE</u>				
0701	Computer & Information Science	B	B.S.	Computer Science
<u>EDUCATION</u>				
0802	Elementary Education, General	B	B.A.	Elementary Education, Intermediate (4-9)
		B	B.A.	Early Childhood Education (K-3)
		M	M.A.	Elementary Education (Early Childhood and Intermediate)
		M	M.Ed.	Elementary Education (Early Childhood and Intermediate)

*Level: B = Bachelor's

M = Master's

DEGREE PROGRAMS AND PROGRAM TRACKS (Continued)

HEGIS CODE	DIVISION AND PROGRAM TITLE	DEGREE LEVEL*	DEGREE	PROGRAM TRACK
<u>EDUCATION (Continued)</u>				
0804	Junior High School Education	M M	M.A. M.Ed.	Middle Grades Education Middle Grades Education
0808	Special Education, General	M M	M.Ed. M.Ed.	Education of Mentally Retarded Education of the Emotionally Disturbed
0815	Speech Correction	M	M.Ed.	Speech and Hearing Education
0826	Student Personnel	M M M	M.A. M.A. M.A.	Student Personnel (Counseling and Guidance) Career Counseling and Placement Agency Counseling
0835	Physical Education	B M M M	B.S. M.S. M.S. M.S.	Physical Education Physical Education Special Physical Education Physical Education, Secondary Education
0837	Health Education	B B	B.S. B.S.	Health Education Community Health Education
0838	Business, Commerce, & Distributive Education	B B M	B.S.C. B.S.C. M.S.	Business Education, Secondary, Basic Business Education, Secondary, Comprehensive Business Education, Secondary
0893	Educational Administration & Supervision	M	M.A.	Education Administration Supervision
0897	Educational Media	M	M.A.	Instructional Media

*Level: B = Bachelor's

M = Master's

DEGREE PROGRAMS AND PROGRAM TRACKS (Continued)

HEGIS CODE	DIVISION AND PROGRAM TITLE	DEGREE LEVEL*	DEGREE	PROGRAM TRACK
<u>FINE AND APPLIED ARTS</u>				
1002	Art	B	B.A.	Art, General
		B	B.A.	Visual Communications
		B	B.A.	Art, Fine Art
		B	B.A.	Art, Art Education
1004	Music (Performing)	B	B.M.	Jazz
		B	B.M.	Sacred Music
1005	Music	B	B.A.	Music (Liberal Arts Program)
		B	B.A.	Music, Music Education
		M	M.A.	Music (Liberal Arts Program)
		M	M.A.	Music Education, K-12
1007	Dramatic Arts	B	B.A.	Dramatic Arts
		B	B.A.	Dramatic Arts, Secondary Education
		B	B.A.	Theatre Arts Education, K-12
<u>FOREIGN LANGUAGES</u>				
1102	French	B	B.A.	French
		B	B.A.	French, Secondary Education
		M	M.A.	French
		M	M.A.	French, Secondary Education
1103	German	B	B.A.	German
		B	B.A.	German, Secondary Education
1105	Spanish	B	B.A.	Spanish
		B	B.A.	Spanish, Secondary Education
<u>HEALTH PROFESSIONS</u>				
1203	Nursing	B	B.S.N.	Nursing

*Level: B = Bachelor's

M = Master's

DEGREE PROGRAMS AND PROGRAM TRACKS (Continued)

HEGIS CODE	DIVISION AND PROGRAM TITLE	DEGREE LEVEL*	DEGREE	PROGRAM TRACK
<u>HOME ECONOMICS</u>				
1301	Home Economics, General	B	B.S.H.E.	Home Economics, General
		B	B.S.H.E.	Home Economics, Secondary Education
		M	M.S.	Home Economics Education
1303	Clothing and Textiles	B	B.S.H.E.	Clothing and Textiles
1306	Foods and Nutrition	B	B.S.H.E.	Foods and Nutrition (including Dietetics)
<u>LAW</u>				
1401	Law, General	P	L.L.B.	Law
		P	J.D.	Law
<u>LETTERS</u>				
1501	English, General	B	B.A.	English
		B	B.A.	English, Secondary Education
		M	M.A.	English
1509	Philosophy	B	B.A.	Philosophy
<u>LIBRARY SCIENCE</u>				
1601	Library Science, General	M	M.L.S.	Library Science
<u>MATHEMATICS</u>				
1701	Mathematics, General	B	B.S.	Mathematics
		B	B.S.	Mathematics, Secondary Education
		B	B.S.	Acturial Science

*Level: B = Bachelor's

M = Master's

P = Professional

DEGREE PROGRAMS AND PROGRAM TRACKS (Continued)

HEGIS CODE	DIVISION AND PROGRAM TITLE	DEGREE LEVEL*	DEGREE	PROGRAM TRACK
<u>MATHEMATICS (Continued)</u>				
1701	Mathematics, General	M	M.S.	Mathematics
		M	M.S.	Mathematics, Secondary Education
<u>PHYSICAL SCIENCES</u>				
1902	Physics, General	B	B.S.	Physics
		B	B.S.	Physics, Secondary Education
1905	Chemistry, General	B	B.S.	Chemistry
		B	B.S.	Chemistry, Secondary Education
		M	M.S.	Chemistry
		M	M.S.	Chemistry, Secondary Education
<u>PSYCHOLOGY</u>				
2001	Psychology, General	B	B.A.	Psychology
		M	M.A.	Psychology
<u>PUBLIC AFFAIRS AND SERVICES</u>				
2102	Public Administration	M	M.P.A.	Public Administration
2103	Parks and Recreation Management	B	B.S.	Recreation Administration
		M	M.S.	Recreation Administration
2105	Law Enforcement and Corrections	B	B.A.	Political Science: Criminal Justice
		M	M.S.	Criminal Justice

*Level: B = Bachelor's

M = Master's

DEGREE PROGRAMS AND PROGRAM TRACKS (Continued)

HEGIS CODE	DIVISION AND PROGRAM TITLE	DEGREE LEVEL*	DEGREE	PROGRAM TRACK
<u>SOCIAL SCIENCES</u>				
2201	Social Sciences, General	B	B.A.	Social Sciences
2205	History	B	B.A.	History
		B	B.A.	History, Secondary Education
		M	M.A.	History
		M	M.A.	History, Secondary Education
2206	Geography	B	B.S.	Geography
2207	Political Science and Government	B	B.A.	Political Science
2208	Sociology	B	B.A.	Sociology
		M	M.A.	Sociology
2211	Afro-American Studies	B	B.A.	Black Studies

*Level: B = Bachelor's

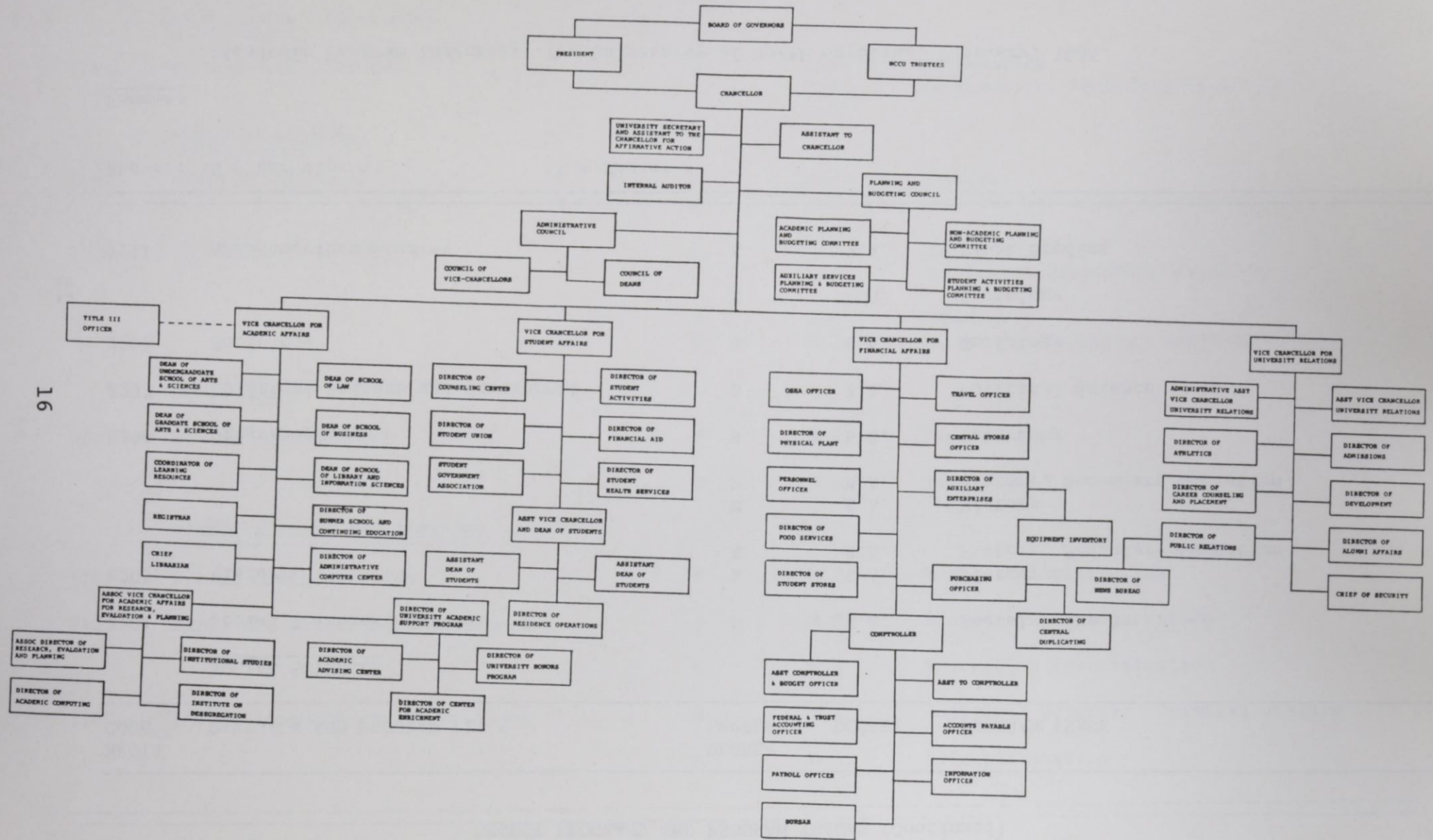
M = Master's

Source:

Academic Program Inventory, The University of North Carolina, February, 1985.

NORTH CAROLINA CENTRAL UNIVERSITY

1985



16

THE UNIVERSITY OF NORTH CAROLINA

BOARD OF GOVERNORS

PHILIP G. CARSON
JACOB H. FROELICH, JR.
MRS. GENEVA J. BOWE

CHAIRPERSON
VICE-CHAIRPERSON
SECRETARY

CLASS OF 1985

FURMAN P. BODENHEIMER
LAURENCE A. COBB
JOHN EDWIN DAVENPORT
CHARLES Z. FLACK, JR.
JAMES E. HOLMES
REGINALD F. MCCOY
MRS. JOHN F. MCNAIR, III
MACEO A. SLOAN

RALEIGH
CHARLOTTE
NASHVILLE
FOREST CITY
WINSTON-SALEM
LAURINBURG
WINSTON-SALEM
DURHAM

CLASS OF 1987

B. IRVIN BOYLE
MRS. ROBERT H. BULLOCK
WILLIAM A. DEES, JR.
JACOB H. FROELICH, JR.
JAMES E. HOLSHOUSER, JR.
WILLIAM A. JOHNSON
ROBERT L. JONES
E. B. TURNER

CHARLOTTE
SHELBY
GOLDSBORO
HIGH POINT
SOUTHERN PINES
LILLINGTON
RALEIGH
LUMBERTON

CLASS OF 1989

MRS. GENEVA J. BOWE
PHILIP G. CARSON
WALTER R. DAVIS
R. PHILLIP HAIRE
MRS. JULIA TAYLOR MORTON
ASA T. SPAULDING, JR.
DAVID J. WHICHARD, II
WILLIAM K. WOLTZ

MURFREESBORO
ASHEVILLE
MIDLAND
SYLVA
LINVILLE
DURHAM
GREENVILLE
MOUNT AIRY

CLASS OF 1991

IRWIN BELK
WAYNE A. CORPENING
J. EARL DANIELEY
MRS. JOAN S. FOX
JOHN R. JORDAN, JR.
SAMUEL H. POOLE
J. AARON PREVOST
LOUIS T. RANDOLPH

CHARLOTTE
WINSTON-SALEM
ELON-COLLEGE
OXFORD
RALEIGH
SOUTHERN PINES
HAZELWOOD
WASHINGTON

THE UNIVERSITY OF NORTH CAROLINA
OFFICERS OF GENERAL ADMINISTRATION
1984-85

WILLIAM C. FRIDAY	PRESIDENT
ZONA C. NORWOOD	ASSISTANT TO THE PRESIDENT
R. D. MCMILLAN, JR.	ASSISTANT TO THE PRESIDENT FOR GOVERNMENTAL AFFIARS
RICHARD H. ROBINSON, JR.	ASSISTANT TO THE PRESIDENT FOR LEGAL AFFAIRS
TRUDY ATKINS	ACTING ASSISTANT TO THE PRESIDENT FOR PUBLIC INFORMATION
ARNOLD K. KING	ASSISTANT TO THE PRESIDENT FOR RELATIONS WITH FACULTY ASSEMBLY, PRIVATE COLLEGES AND UNIVERSITIES AND THE COMMUNITY COLLEGE SYSTEM
DAVID N. EDWARDS, JR. JEFFREY H. ORLEANS	SPECIAL ASSISTANTS TO THE PRESIDENT
JOHN P. KENNEDY, JR.	SECRETARY OF THE UNIVERSITY
EDWARD W. CROWE	ASSISTANT SECRETARY OF THE UNIVERSITY
FRANCES H. HOPE	ASSISTANT SECRETARY OF THE BOARD OF GOVERNORS
JOHN W. DUNLOP	DIRECTOR, THE UNIVERSITY OF NORTH CAROLINA CENTER FOR PUBLIC TELEVISION

ACADEMIC AFFAIRS DIVISION

RAYMOND H. DAWSON	VICE PRESIDENT FOR ACADEMIC AFFAIRS AND SENIOR VICE PRESIDENT
ARTHUR PADILLA DONALD J. STEDMAN ROBERT W. WILLIAMS, JR.	ASSOCIATE VICE PRESIDENTS FOR ACADEMIC AFFAIRS
MICKEY L. BURNIM	ASSISTANT VICE PRESIDENT FOR ACADEMIC AFFAIRS
LOUIS T. PARKER, JR.	DIRECTOR, NORTH CAROLINA EDUCATIONAL COMPUTING SERVICE
EUGENE MCDOWELL	DIRECTOR, ASHEVILLE GRADUATE CENTER

FINANCE DIVISION

L. FELIX JOYNER	VICE PRESIDENT FOR FINANCE
HUGH BUCHANAN, JR. KENNIS R. GROGAN ELLEN H. KEPLEY	ASSOCIATE VICE PRESIDENTS FOR FINANCE
BRYANT L. DEATON LEON M. ENNIS, JR. A. P. WINFREY	ASSISTANT VICE PRESIDENTS FOR FINANCE
J. SIBLEY DORTON, JR.	ASSISTANT VICE PRESIDENT FOR FINANCE AND TREASURER
ALLEN WATERS	ASSISTANT VICE PRESIDENT FOR FINANCE AND UNIVERSITY PROPERTY OFFICER
MILTON H. GUPTON	SERVICES OFFICER
JAMES O. SMITH	FINANCE OFFICER

PLANNING DIVISION

ROY CARROLL	VICE PRESIDENT FOR PLANNING
GARY T. BARNES	ASSOCIATE VICE PRESIDENT FOR PLANNING
E. BRUCE SIGMON, JR.	ASSISTANT VICE PRESIDENT FOR PLANNING
ROBERT F. HILL, JR.	DIRECTOR OF INFORMATION SERVICES
LINDA BALFOUR	DIRECTOR OF DATA COLLECTION AND REPORTING

RESEARCH AND PUBLIC SERVICE PROGRAMS DIVISION

E. WALTON JONES	VICE PRESIDENT FOR RESEARCH AND PUBLIC SERVICE PROGRAMS
CHARLES L. WHEELER	ASSISTANT VICE PRESIDENT FOR RESEARCH AND PUBLIC SERVICE PROGRAMS AND DIRECTOR NORTH CAROLINA STATE COMMISSION ON HIGHER EDUCATION FACILITIES
EDWIN W. HAUSER	DIRECTOR, INSTITUTE FOR TRANSPORTATION RESEARCH AND EDUCATION
SCOTT R. DAUGHERTY	INTERIM DIRECTOR, NORTH CAROLINA SMALL BUSINESS AND TECHNOLOGY DEVELOPMENT CENTER

STUDENT SERVICES AND SPECIAL PROGRAMS DIVISION

CLEON F. THOMPSON, JR.

VICE PRESIDENT
FOR STUDENT SERVICES AND
SPECIAL PROGRAMS

JOHN R. COREY
PAUL B. MARION

ASSOCIATE VICE PRESIDENTS
FOR STUDENT SERVICES AND
SPECIAL PROGRAMS

STAN C. BROADWAY

STATE EDUCATION ASSISTANCE AUTHORITY

NORTH CAROLINA CENTRAL UNIVERSITY

BOARD OF TRUSTEES

CHARLES V. HOLLAND (CHAIRMAN)	RALEIGH
GAIL H. BLACKBURN, III (VICE CHAIRMAN)	DURHAM
JUNE M. JEFFERS (SECRETARY)	REIDSVILLE
VICTOR S. BRYANT, JR.	DURHAM
GEORGE WATTS CARR, JR.	DURHAM
THEAOSEUS T. CLAYTON	WARRENTON
HELEN EDMONDS	DURHAM
J. RICHARD FUTRELL, JR.	ROCKY MOUNT
HILIARY H. HOLLOWAY	PHILADELPHIA, PA
EVELYN O. SHAW	FAYETTEVILLE
S. DALLAS SIMMONS	LAWRENCEVILLE, VA
ALFRED J. WHITESIDES, JR.	ASHEVILLE
WILLIAM J. BARBER (EX-OFFICIO MEMBER)	DURHAM

NORTH CAROLINA CENTRAL UNIVERSITY

OFFICERS AND ADMINISTRATIVE STAFF

1984-85

OFFICE OF THE CHANCELLOR

LeRoy T. Walker, PhD
Acie L. Ward, JD

Interim Chancellor
Assistant To The Chancellor

ACADEMIC AFFAIRS

Cecil L. Patterson, PhD

Vice Chancellor

GRADUATE SCHOOL OF ARTS AND SCIENCES:

Mary M. Townes, PhD

Dean

UNDERGRADUATE SCHOOL OF ARTS AND SCIENCES:

Walter H. Pattillo, PhD
George Reid, PhD

Dean
Assistant Dean

Department Chairpersons

Lana T. Henderson, PhD
John Ruffin, PhD
James Schooler, PhD
Linda Norfleet, MA
Ferman Moody, EdD
Patsy B. Perry, PhD
Woodrow Nichols, PhD
Howard M. Fitts, EdD
Percy Murray, PhD
Beverly A. Nichols, EdD
William T. Fletcher, PhD
Henri Armand, PhD
Gene Strassler, PhD
Johnea D. Kelley, PhD
Robert J. Clack, PhD
Carey Hughley, PhD
Kinney H. Kim, PhD
Joseph Aicher, PhD
Leslie Brinson, PhD
George Conklin, PhD

Art
Biology
Chemistry
Dramatic Art
Education
English
Geography
Health Education
History and Social Science
Home Economics
Mathematics
Modern Foreign Languages
Music
Nursing
Philosophy
Physical Education and Recreation
Physics
Political Science
Psychology
Sociology

SCHOOL OF BUSINESS:

Tyronza Richmond, PhD
Raphael Thompson, MBA

Marian H. Thorne, EdD
John Turner, MEd

Dean
Associate Dean for Graduate Programs
and Corporate Relations
Associate Dean for Undergraduate Programs
Associate Dean for Student Affairs

SCHOOL OF LAW:

Charles E. Daye, JD	Dean
Suzanne Leary, JD	Assistant Dean
Percy Luney, JD	Assistant Dean

SCHOOL OF LIBRARY SCIENCE:

Benjamin F. Speller, PhD	Acting Dean
--------------------------	-------------

ACADEMIC SUPPORT PROGRAMS:

Lafayette W. Lipscomb, PhD	Director
Sarah Bell-Lucas, MA	Director, Center for Academic Enrichment
Arthrell Sanders, PhD	Director, Academic Advising
Eugene Eaves, PhD	Director, Honors Program
Sherry Bugg, BA	Psychometrist
Barbara Hargrave, PhD	Director, Health Careers Regional Center

ADMINISTRATIVE DATA PROCESSING CENTER:

Nathaniel L. Felder, PhD	Director
--------------------------	----------

JAMES E. SHEPARD LIBRARY:

Floyd C. Hardy, PhD	Head Librarian
---------------------	----------------

OFFICE OF RECORDS AND REGISTRATION:

Bernell Jones, PhD	Registrar
Grace Cooke	Assistant Registrar

OFFICE OF RESEARCH, EVALUATION, AND PLANNING:

Linda K. Pratt, PhD	Associate Vice Chancellor for Research, Evaluation, and Planning
Karen M. Gentemann, PhD	Associate Director for Research, Evaluation, and Planning
James W. Pierce, MA	Director, Institutional Studies
Charles M. Beattie, II, PhD	Director, Institute on Desegregation
Robert D. Montgomery, MA	Director, Academic Computing

SUMMER SESSIONS AND CONTINUING EDUCATION:

Waltz Maynor, EdD	Director
-------------------	----------

FACULTY SENATE:

Rudolph S. Jackson, DRPH	President
--------------------------	-----------

FINANCIAL AFFAIRS

George T. Thorne, MS
Linda Belton, BS
Robert Curtis, Jr.
Patricia Durham, MS
Rebecca P. Edmonds, MA
Ralph Fonnell, BSC
Edna Harrington
Donald Harvin
Pauline Johnson, AB
Alyce Little, BBA
William E. McDonald, BSEE
Shirley B. Ragland, AAS
Aletha Rease, MS
Robert P. Smith, BS
Thomasine Toxey, BS
Vacant

Vice Chancellor
Federal Loans Collection Officer
Central Stores Officer
Director of Auxiliary Enterprises
Purchasing Officer
Comptroller
Acting Director of Student Stores
Acting Director of Central Duplicating
Bursar
Payroll Officer
Director of Physical Plant
Travel Officer
Personnel Officer
Director of Food Services
Federal and Trust Accounting Officer
OSHA Officer

STUDENT AFFAIRS

Roland Buchanan, PhD
Roger B. Bryant, EdD
Evelyn Deck
Shirley Green, MA
Marian E. Covington

Thurman Prescott, Jr., BA
Glen R. Martin, EdD
Lola T. McKnight, BS
Marcono R. Hines, MD

Vice Chancellor
Assistant Vice Chancellor and Dean of Students
Assistant Dean of Students
Director of Residence Operations
Assistant to the Vice Chancellor and Supervisor
of Student Organizational Finances
Director of Student Union
Director of Counseling Center
Director of Financial Aid
Director of Student Health Services

UNIVERSITY RELATIONS

Tyrone Baines, PhD
Carolyn Williams, PhD
William Malone, MSPH
William P. Evans, BS
Thomas Lutten, MA
Nancy Rowland, MA
Robert Poole, BA
Henry Lattimore, MS
John W. Smith, MA
Alex M. Rivera, BA
David H. Witherspoon, BA
Christopher Fisher, MA

Vice Chancellor
Administrative Assistant to the Vice Chancellor
Assistant Vice Chancellor
Director of Alumni Affairs
Director of Career Counseling and Placement
Director of Admissions
Director of Development
Director of Athletics and Head Coach of Football
Chief of Security
Director of Public Relations
Director of News Bureau
Sports Information Director

TABLE 1

CHARACTERISTICS OF NCCU FACILITIES, FALL 1984

INSTRUCTIONAL FACILITIES

<u>YEAR COMPLETED</u>	<u>NAME</u>	<u>ASSIGNABLE SQUARE FT.</u>	<u>CLASS ROOMS</u>	<u>CLASS LABS</u>	<u>OTHER LABS</u>	<u>OFFICES</u>
1930	Alexander Dunn	10,194	4		4	26
1937	Duke Auditorium	10,566			1	2
1937	Old Law School	12,996	3			17
1937	Robinson Science	16,316	11	6	3	19
1940	Women's Gym	13,421				4
1950	Classroom Building	14,682	11			44
1950	McDougald Gym	35,421	3			7
1950	Music and Fine Arts	14,132	3	9		6
1950	Shepard Library	38,742	4			21
1952	Dent Home Economics	13,780	6	2	5	13
1953	Home Econ. Practice House	2,870				13
1955	Taylor Education Bldg.	25,715	16	1	6	40
1956	Lee Biology Building	21,137	6	9	21	9
1956	Willis Commerce Bldg.	25,958	9	6		56
1957	Biology Greenhouse	440		1		
1969	Bowling Alley	5,358	1			
1969	Hubbard Chemistry	19,085	4	10	9	10
1976	Communications Bldg.	51,910	28	4	4	66
1976	Fine Arts Addition	14,987	4	2	13	18
1980	Turner Law School	50,912	7		2	41
1982	Health Sciences Bldg.	28,684	13	2	5	25
1984	Criminal Justice Bldg.	17,837	13	1	3	23
TOTAL INSTRUCTIONAL FACILITIES		445,134	146	52	77	447

SOURCE: North Carolina Facilities Inventory and Space Utilization Reports, Fall 1984

TABLE 1
(continued)

CHARACTERISTICS OF NCCU FACILITIES, FALL 1984

ADMINISTRATIVE/FACULTY/STUDENT SERVICE FACILITIES

<u>YEAR COMPLETED</u>	<u>NAME</u>	<u>ASSIGNABLE SQUARE FT.</u>	<u>OFFICES</u>
1925	Admissions Office	2,487	6
1929	Hoey Administration Building	19,239	83
1937	Cottage 1	1,979	6
1937	Jordan House	1,747	8
1937	Personnel Building	1,558	5
1937	ROTC	1,730	7
1945	Faculty Apt. 1	3,625	10
1950	Central Heating Plant	6,985	
1950	Health Building	13,071	16
1956	McDougald House	3,299	5
1963	Honors Court	849	3
1965	Storage Building	11,694	1
1966	Pearson Cafeteria	11,694	1
1968	Elder Student Union	26,543	16
1977	Maintenance Building	7,897	10
1983	Cafeteria Annex	2,824	3
<u>TOTAL ADMINISTRATIVE/FACULTY/ STUDENT SERVICES FACILITIES</u>		<u>164,264</u>	<u>190</u>

TABLE 1
(continued)

CHARACTERISTICS OF NCCU FACILITIES, FALL 1984

RESIDENTIAL FACILITIES

<u>YEAR COMPLETED</u>	<u>NAME</u>	<u>ASSIGNABLE SQUARE FT.</u>	<u>OCCUPANCY</u>	<u>OFFICES</u>
<u>DORMITORIES</u>				
1930	Shepard (women)	28,744	156	2
1937	McLean (women)	16,669	80	2
1937	Rush (women)	17,189	70	
1939	Old Senior (women)	10,240	18	18
1951	Chidley (men)	77,282	642	7
1951	Graduate Apts.	10,750	12	
1960	Latham (women)	28,453	201	1
1966	Baynes (women)	52,323	402	1
1968	Eagleson (women)	55,526	402	1
<u>TOTAL DORMITORY FACILITIES</u>		<u>297,176</u>	<u>1984</u>	<u>32</u>
<u>OTHER RESIDENTIAL FACILITIES</u>				
1960	707 Burlington Ave.	850		
1960	709 Burlington Ave.	850		
1963	521 Nelson Street	1,150		
1963	523 Nelson Street	850		
1969	1908 Fayetteville St.	1,649		
1969	1910 Fayetteville St.	454		
1974	Chancellor's Residence	3,293		
<u>TOTAL OTHER RESIDENTIAL FACILITIES</u>		<u>9,096</u>		
<u>GRAND TOTAL: ALL FACILITIES</u>		<u>915,670</u>		

TABLE 2

REVENUES AND EXPENDITURES FOR
FISCAL YEAR, 1983-84

<u>DESCRIPTION OF FINANCIAL STATISTICS</u>	<u>AMOUNT (IN DOLLARS)</u>
CURRENT FUNDS REVENUES BY SOURCES	
Tuition & Fees	\$ 3,585,229
State	17,623,896
Government Grants & Contracts:	
Federal, Unrestricted	50,668
Federal, Restricted	5,260,735
State, Unrestricted	9,492
State, Restricted	149,214
Local, Unrestricted	
Local, Restricted	
Private Gifts, Grants & Contracts:	
Unrestricted	
Restricted	172,312
Endowment Income:	
Unrestricted	
Restricted	58,986
Sales & Services of Educational Activities	399,069
Sales & Services of Auxiliary Enterprises	5,646,799
Other Sources	24,380
Independent Operations	
TOTAL CURRENT FUNDS REVENUES	\$32,980,780
CURRENT FUNDS EXPENDITURES & MANDATORY TRANSFER	
Instruction	\$12,464,523
Research	264,591
Public Service	23,098
Academic Support (Including Libraries)	3,155,163
Student Services	1,183,543
Institutional Administration	2,676,170
Physical Plant Operations	3,436,676
Student Financial Support	
Awards from Unrestricted Funds	363,119
Awards from Restricted Funds	3,702,122
Auxiliary Enterprises (Including Mandatory Transfers)	5,299,972
Independent Operations (Including Mandatory Transfers)	
TOTAL CURRENT FUNDS EXPENDITURES & MANDATORY TRANSFERS	\$32,568,977

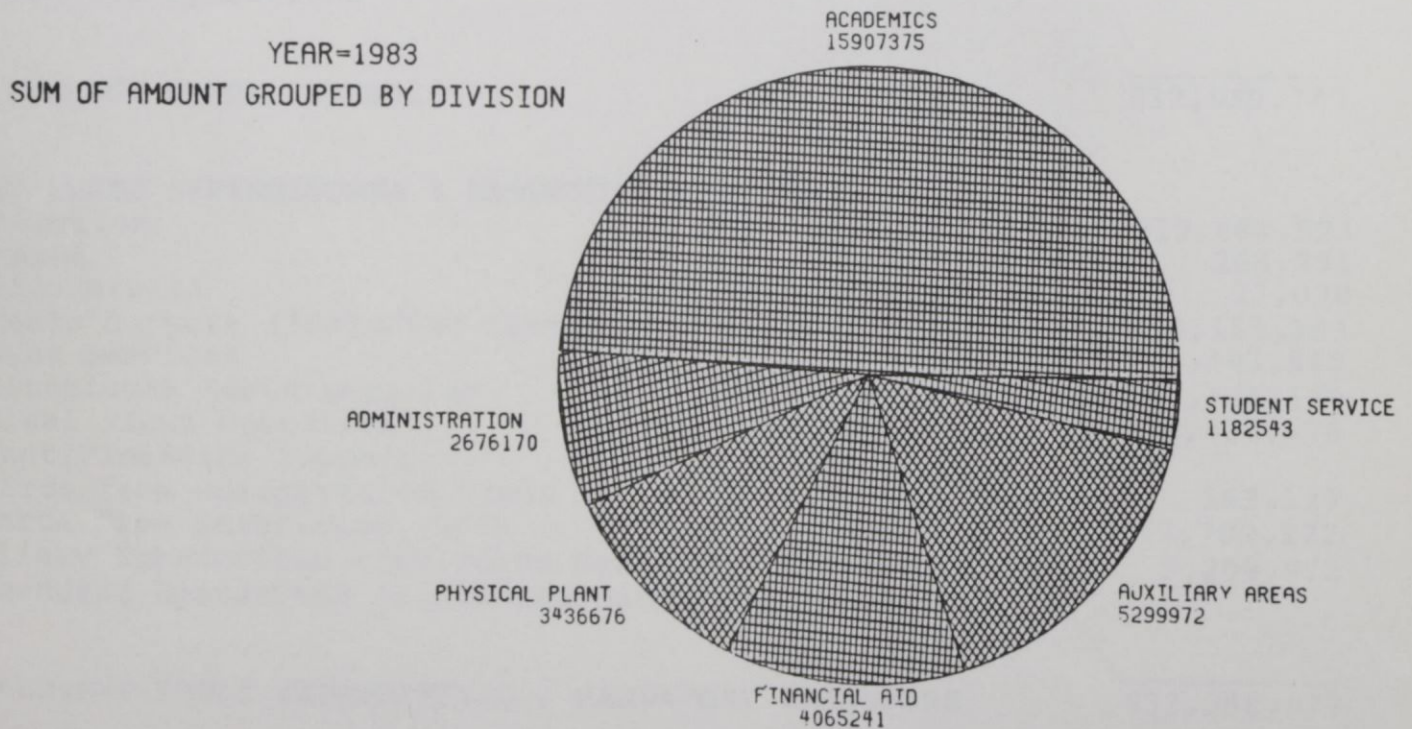
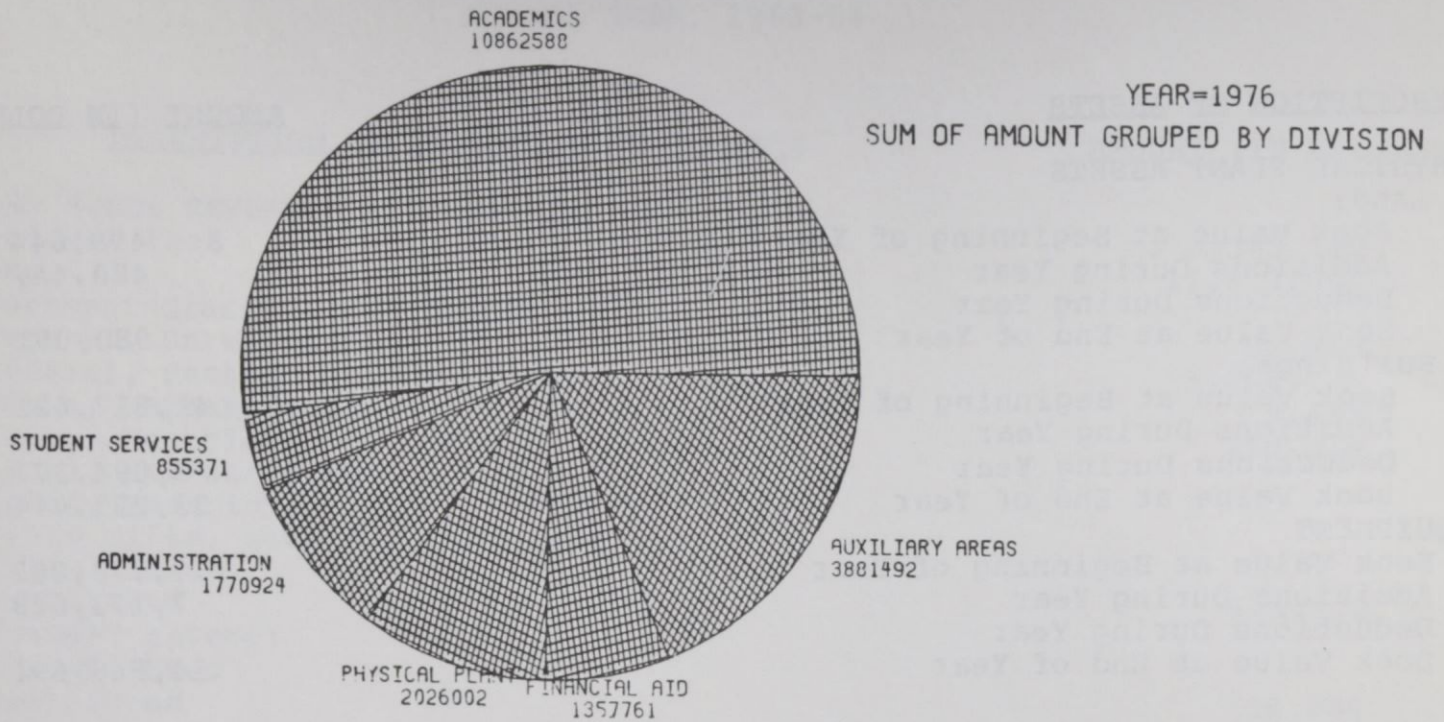
TABLE 3

ASSETS FOR FISCAL YEAR, 1983-84

<u>DESCRIPTION OF ASSETS</u>	<u>AMOUNT (IN DOLLARS)</u>
PHYSICAL PLANT ASSETS	
Land:	
Book Value at Beginning of Year	\$ 499,644
Additions During Year	480,447
Deductions During Year	
Book Value at End of Year	980,091
Buildings:	
Book Value at Beginning of Year	41,317,421
Additions During Year	
Deductions During Year	8,094,377
Book Value at End of Year	33,223,044
EQUIPMENT	
Book Value at Beginning of Year	7,773,062
Additions During Year	7,173,629
Deductions During Year	
Book Value at End of Year	14,946,691
TOTAL PHYSICAL PLANT ASSETS (BOOK VALUE)	<u>\$49,149,826</u>

FIGURE 1.

FIVE-YEAR COMPARISON OF UNIVERSITY EXPENDITURES BY AREA



OFFICE OF RESEARCH, EVALUATION AND PLANNING

TABLE 4

STUDENT TUITION, FEES AND CHARGES
FOR THE 1984-85 ACADEMIC YEAR

CATEGORY	UNDERGRADUATE		GRADUATE	
	IN-STATE	OUT-OF-STATE	IN-STATE	OUT-OF-STATE
TUITION AND ACADEMIC FEES	\$410.00	\$ 2,968.00	\$ 410.00	\$ 2,968.00
OTHER REQUIRED FEES			323.00	323.00
Athletic Fee	63.00	63.00		
Health Services Fee	78.00	78.00		
Cultural Series	15.00	15.00		
Debt Services Fee(s)	117.00	117.00		
General Student Activity Fee	77.00	77.00		
TOTAL TUITION & REQUIRED FEES	760.00	3,318.00	733.00	3,291.00
DORMITORY ROOM RENT	927.00	927.00	927.00	927.00
BOARD PLAN (7-DAY)	986.00	986.00	986.00	986.00

TABLE 5

LIBRARY COLLECTIONS AND EXPENDITURES
FALL 1984

	<u>AMOUNT</u>
<u>COLLECTIONS</u>	
PERIODICALS & LIBRARY COLLECTIONS	
Current Periodical Subscriptions	2,947
Library Collection (Books)	
Number of Volumes	578,127
Number of Titles (Excluding Duplicate Copies)	408,100
Separate Government Documents Collection	206,272
Microforms - All Types	
Number of Book Titles Represented by Microforms	36,695
Number of Periodical Titles Represented by Microform	282
Number of Physical Units of Microforms Not Reported Above	379,825
Periodicals & Audiovisual Materials - Number of Titles	26,786
All Other Library Materials, Including Unbound Non-Current	4,936
 <u>EXPENDITURES</u>	
OPERATING EXPENDITURES	
Salaries & Wages	\$ 814,496
Fringe Benefits	173,557
Wages of Students on an Hourly Basis	9,246
Supplies & Materials	
Books	355,817
Periodicals	227,166
Microforms	19,036
Audiovisual Materials	8,425
All Other Library Materials	352
Binding & Rebinding	14,427
Other Operating Expenditures	64,803
	<hr/>
Total Library Operating Expenditures	\$1,687,325

FACTS ABOUT STUDENTS

LIST OF TABLES AND FIGURES

		<u>Page</u>
 <u>Admissions</u>		
TABLE	6: Number of Student Applications, Acceptances and Enrollees, Fall 1984	35
FIGURE	2: Five-Year Comparison of Undergraduate Applicants, Acceptances and Enrollees	36
FIGURE	3: Five-Year Comparison of Graduate and First Professional Applicants, Acceptances and Enrollees	37
TABLE	7: Mean SAT Scores of Entering Freshmen, 1964-1984	38
TABLE	8: High School Class Rank of Entering Freshmen, 1974-1984	39
TABLE	9: Undergraduate Transfers Into NCCU, 1968-1984	40
 <u>Enrollment</u>		
TABLE	10: General Characteristics of Enrollment, 1982-1984	41
TABLE	11: Sex Distribution of Headcount Enrollment, 1926-1984	42
TABLE	12: Racial Composition of Headcount Enrollment, 1976-1984	43
TABLE	13: Mean Age of Enrolled Students, 1975-1984	44
TABLE	14: Undergraduate Enrollment by Age, 1984	45
FIGURE	4: Five-Year Comparison of Traditional Versus Non-Traditional Undergraduate Students	46
TABLE	15: Graduate and First Professional Enrollment by Age, 1984	47
TABLE	16: Geographic Origin of Students, 1968-1984	48
TABLE	17: Distribution of Students by State, Fall 1984	49
FIGURE	5: Geographic Origin by States of North Carolina Central University Undergraduate and Graduate Students, 1984-85	50
FIGURE	6: Geographic Origin by County of North Carolina Central University Undergraduate and Graduate Students, 1984-85	51
TABLE	18: Distribution of North Carolina Students by County, Fall 1984	52
TABLE	19: Students Enrolled, Graduated, Suspended, and Not Enrolled After Initial Entry Year	53
TABLE	20: First Time North Carolina Central University Freshmen Enrolled or Graduated	54
TABLE	21: First Time Freshmen in The University of North Carolina System Enrolled or Graduated	55

FACTS ABOUT STUDENTS (Continued)

		<u>Page</u>
<u>Degrees Conferred</u>		
TABLE	22: Undergraduate Degrees Conferred by Field of Study, 1967-1985	56
TABLE	23: Graduate Degrees Conferred by Field of Study, 1967-1984	58
<u>Financial Aid</u>		
TABLE	24: Student Financial Aid, 1982-1984	59
TABLE	25: Financial Aid Awards, 1980-1984	60

TABLE 6

NUMBER OF STUDENT APPLICATIONS,
ACCEPTANCES AND ENROLLEES, FALL 1984

<u>NEW STUDENTS</u>	<u>MEN</u>	<u>IN-STATE</u>		<u>OUT-OF-STATE</u>				<u>TOTAL</u>
		<u>%</u>	<u>WOMEN</u>	<u>%</u>	<u>MEN</u>	<u>%</u>	<u>WOMEN</u>	
<u>FIRST-TIME FRESHMEN</u>								
Applicants	425		636		162		164	1387
Accepted	390	92	596	94	145	89	151	1282
Enrolled	241	62	376	63	77	53	75	769
<u>NEW UNDERGRADUATE TRANSFERS</u>								
Applicants	107		150		36		33	326
Accepted	100	93	145	97	27	75	31	303
Enrolled	71	71	106	73	15	55	16	208
<u>GRADUATE STUDENTS</u>								
Applicants	75		224		18		18	335
Accepted	75	100	221	97	18	100	17	331
Enrolled	59	79	184	83	9	50	12	264
<u>FIRST PROFESSIONAL STUDENTS</u>								
Applicants	115		64		120		48	347
Accepted	71	62	43	67	8	7	16	138
Enrolled	50	43	37	86	7	87	13	107

FIGURE 2.

SIX YEAR COMPARISON OF UNDERGRADUATE APPLICANTS, ACCEPTANCES & ENROLLEES

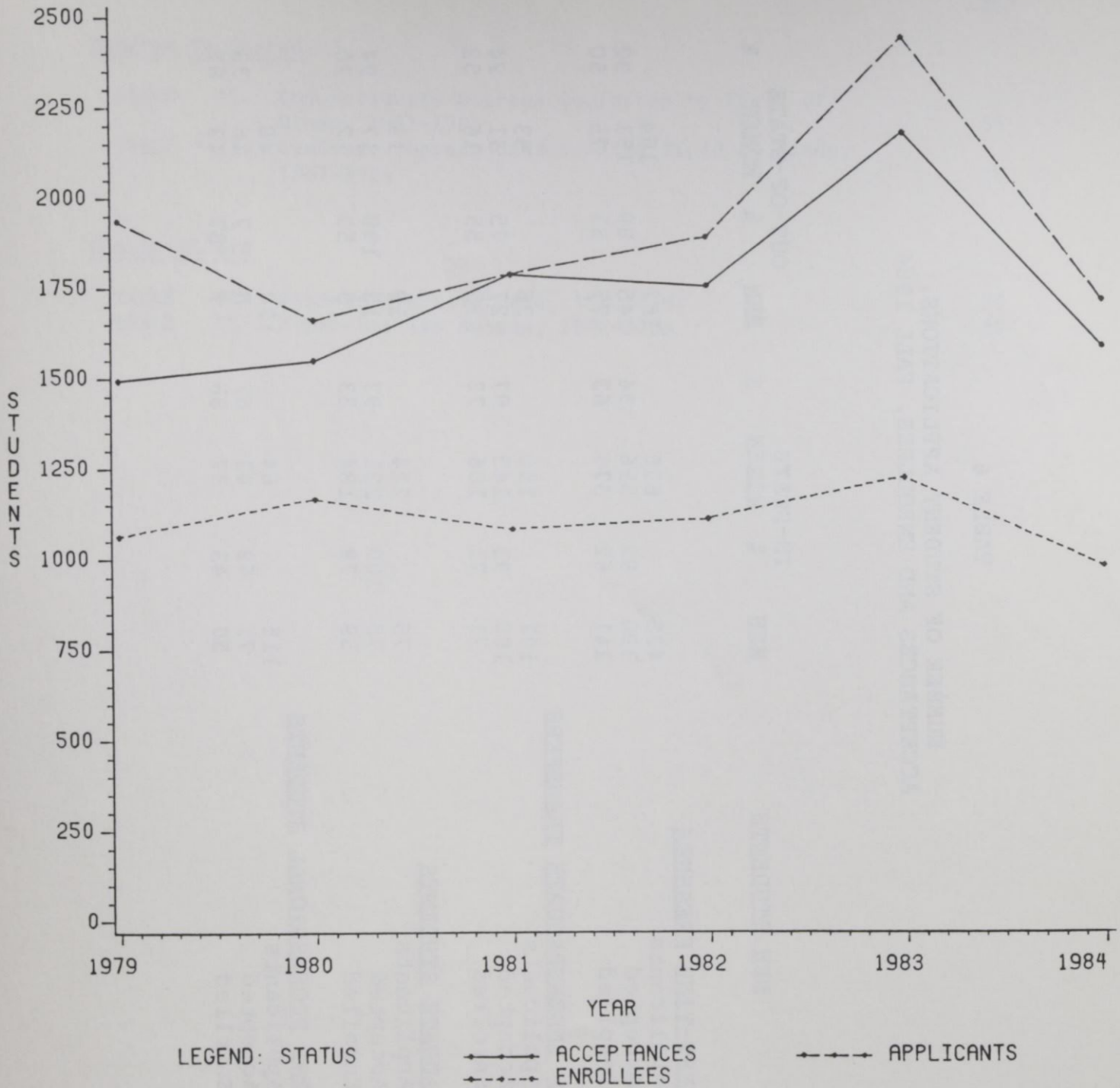


FIGURE 3.

SIX YEAR COMPARISON OF GRADUATE & FIRST PROFESSIONAL APPLICANTS, ACCEPTANCES & ENROLLEES

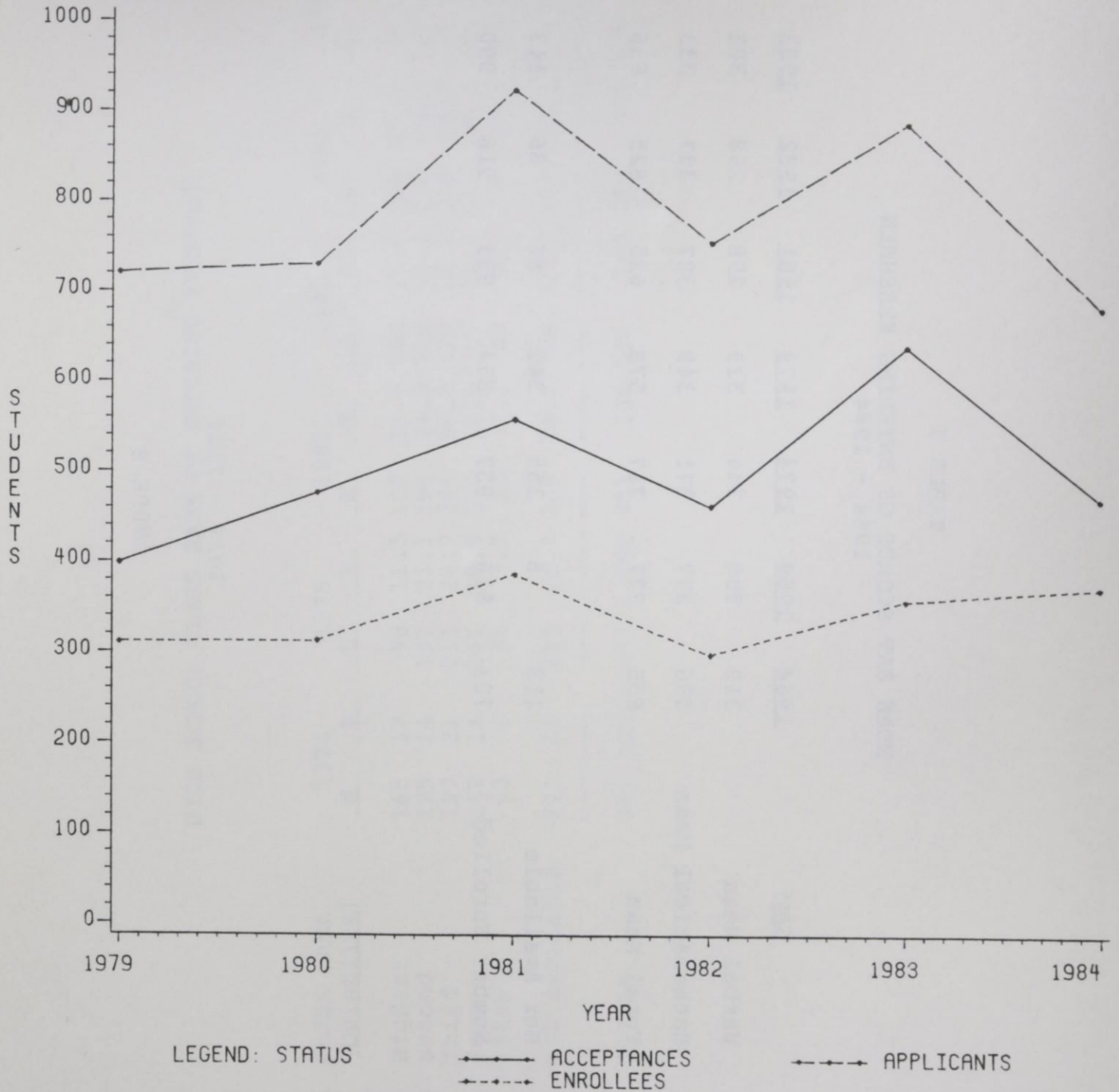


TABLE 7

MEAN SAT SCORES OF ENTERING FRESHMEN
1964 - 1984

<u>SAT</u>	<u>1964</u>	<u>1969</u>	<u>1974</u>	<u>1979</u>	<u>1981</u>	<u>1982</u>	<u>1983</u>	<u>1984</u>
Verbal Mean	319	350	346	329	298	298	303	329
Mathematical Mean	336	377	371	349	327	327	333	359
Total Mean	655	727	717	678	625	625	636	688
Not Available	118	8	155	342	86	86	143	250
Number Enrolled	701	816	957	854	931	918	990	765

TABLE 8

HIGH SCHOOL CLASS RANK OF ENTERING FRESHMEN
1974 - 1984

CLASS RANK (Quintiles)	1974		1979		1981		1982		1983		1984	
	<u>N</u>	<u>%</u>	<u>N</u>	<u>%</u>	<u>N</u>	<u>%</u>	<u>N</u>	<u>%</u>	<u>N</u>	<u>%</u>	<u>N</u>	<u>%</u>
Highest	165	17	98	11.5	109	11.7	101	11.0	109	11.0	90	11.8
Second	225	24	197	23.1	196	21.0	204	22.2	219	22.1	139	18.2
Third	197	21	211	24.7	246	26.4	220	24.1	248	25.0	173	22.6
Fourth	137	14	161	18.9	177	19.0	173	18.8	179	18.1	94	12.3
Fifth	62	6	32	3.7	68	7.3	60	6.5	53	5.4	34	4.4
Not Available	171	18	155	18.1	135	14.5	160	17.4	182	18.4	235	30.7
TOTALS	957	100	854	100	931	100	918	100	990	100	765	100

TABLE 9

UNDERGRADUATE TRANSFERS INTO NCCU
1968 - 1984

<u>TRANSFER INSTITUTION</u>	<u>1968</u>	<u>1972</u>	<u>1974</u>	<u>1978</u>	<u>1981</u>	<u>1982</u>	<u>1983</u>	<u>1984</u>
In-State Public Senior Colleges	5	8	21	26	26	40	76	48
In-State Private Senior Colleges	1	7	7	16	22	34	38	24
In-State Public Community Colleges & Technical Institutes		21	1	61	59	60	105	60
In-State Private Junior Colleges	1	14	19	26	6	3	6	4
Out-of-State Institutions		19	39	27	41	50	73	62
Unknown						2	3	7
	7	69	87	156	154	189	301	205
TOTALS								

TABLE 10

GENERAL CHARACTERISTICS OF ENROLLMENT,
1982 - 1984

CHARACTERISTICS	1982						1983						1984					
	MEN	%	WOMEN	%	TOTAL	%	MEN	%	WOMEN	%	TOTAL	%	MEN	%	WOMEN	%	TOTAL	%
UNDERGRADUATE																		
FRESHMEN	615	12.3	953	19.1	1568	31.4	604	11.6	946	18.1	1550	29.7	542	11.9	767	16.8	1309	28.8
Full-Time	547		824		1371		488		772		1260		458		616		1074	
Part-Time	68		129		197		116		174		290		84		151		235	
SOPHOMORE	350	7.0	630	12.6	980	19.6	377	7.2	681	13.0	1058	20.2	345	7.5	566	12.4	911	20.0
Full-Time	325		585		910		315		577		892		316		509		825	
Part-Time	25		45		70		62		104		166		29		57		86	
JUNIOR	289	5.8	478	9.6	767	15.4	316	6.0	560	10.7	876	16.7	259	5.6	469	10.3	728	16.0
Full-Time	255		416		671		251		462		713		220		404		624	
Part-Time	34		62		96		65		98		163		39		65		104	
SENIOR	203	4.1	377	7.6	580	11.6	251	4.8	465	8.9	716	13.7	197	4.3	387	8.5	584	12.8
Full-Time	172		316		488		183		332		515		143		298		441	
Part-Time	31		61		92		68		133		201		54		89		143	
SPECIAL	64	1.3	184	3.7	248	5.0	35	.7	133	2.5	168	3.2	46	1.0	91	1.9	137	3.0
Full-Time	17		26		43		11		14		25		6		7		13	
Part-Time	47		158		205		24		119		143		40		84		124	
UNDERGRADUATE TOTAL	1521	30.5	2622	52.5	4143	83.0	1583	30.3	2785	53.2	4368	83.5	1389	30.5	2280	50.0	3669	80.6
Full-Time	1316		2167		3483		1248		2157		3405		1143		1834		2977	
Part-Time	205		455		660		335		628		963		246		446		692	
GRADUATE	159	3.2	394	7.9	553	11.1	162	3.0	358	7.0	520	10.0	152	3.3	408	8.9	560	12.3
Full-Time	45		101		146		49		91		140		44		73		117	
Part-Time	114		293		407		113		267		380		108		335		443	
FIRST-PROFESSIONAL	172	3.4	122	2.4	294	5.9	192	3.7	148	2.8	340	6.5	177	3.8	146	3.2	323	7.1
Full-Time	154		102		256		170		126		296		144		121		265	
Part-Time	18		20		38		22		22		44		33		25		58	
TOTALS	1852	37.1	3138	62.9	4990	100	1937	37.0	3291	63.0	5228	100	1718	37.7	2834	62.2	4552	100
Full-Time	1515		2370		3885		1467		2374		3841		1331		2028		3359	
Part-Time	337		768		1105		470		917		1387		387		806		1193	
TOTAL FTE	1702		2774		4476		1728		2850		4578		1528		2436		3964	

TABLE 11
SEX DISTRIBUTION OF HEADCOUNT ENROLLMENT
1926 - 1984

FALL SEMESTER	MALE		FEMALE		TOTAL ENROLLMENT
	N	%	N	%	
1926	8	25	24	75	32
1930	148	28	382	72	530
1935	138	23	472	77	610
1940	245	34	475	66	720
1945	253	30	601	70	854
1950	567	44	726	56	1293
1955	576	41	823	59	1399
1960	785	40	1170	60	1955
1965	950	39	1539	61	2489
1970	1182	38	1967	62	3149
1975	1568	40	2332	60	3900
1976	1933	41	2832	59	4765
1977	1901	39	2954	61	4855
1978	1891	39	2919	61	4810
1979	1915	39	3002	61	4917
1980	1897	39	3013	61	4910
1981	1863	38	3081	62	4944
1982	1852	37	3138	63	4990
1983	1937	37	3291	63	5228
1984	1717	38	2835	62	4552

TABLE 12

RACIAL COMPOSITION OF HEADCOUNT ENROLLMENT
1976 - 1984

<u>YEAR</u>	<u>BLACK</u>	<u>%</u>	<u>WHITE</u>	<u>%</u>	<u>OTHER</u>	<u>%</u>	<u>TOTAL</u>
1976	4314	90.0	366	8.0	85	2.0	4765
1977	4482	92.0	360	7.0	13	.3	4855
1978	4276	89.0	451	9.0	83	2.0	4810
1979	4323	87.9	511	10.4	83	1.7	4917
1980	4320	88.0	502	10.2	88	1.8	4910
1981	4313	87.2	539	10.9	92	1.9	4944
1982	4285	85.9	609	12.2	96	1.9	4990
Undergraduate	3764	90.9	309	7.4	70	1.7	4143
Graduate	380	68.7	153	27.7	20	3.6	553
Professional	141	48.0	147	50.0	6	2.0	294
1983	4464	85.4	647	12.4	117	2.2	5228
Undergraduate	3927	89.9	357	8.2	84	1.9	4368
Graduate	368	70.7	123	23.7	29	5.6	520
Professional	169	49.7	167	49.1	4	1.2	340
1984	3773	82.9	671	14.7	108	2.4	4552
Undergraduate	3243	88.4	345	9.4	80	2.2	3668
Graduate	373	66.5	165	29.4	23	4.1	561
Professional	157	48.6	161	49.9	5	1.6	323

TABLE 13

MEAN AGE OF ENROLLED STUDENTS
1975 - 1984

YEAR	UNDERGRADUATE							GRADUATE AND FIRST PROFESSIONAL						
	MEN		WOMEN		TOTAL		GRAND MEANS	MEN		WOMEN		TOTAL		GRAND MEANS
	FULL- TIME	PART- TIME	FULL- TIME	PART- TIME	FULL- TIME	PART- TIME		FULL- TIME	PART- TIME	FULL- TIME	PART- TIME	FULL- TIME	PART- TIME	
1975	22	26	20	28	21	26	21	28	30	26	31	27	31	29
1976	22	28	20	28	20	28	21	28	31	26	32	27	32	30
1977	22	27	21	27	21	27	22	28	32	27	32	28	32	30
1978	22	27	21	29	22	28	22	28	33	28	32	28	32	30
1979	22	27	23	28	22	27	23	30	32	29	33	30	33	31
1980	21	27	21	29	21	28	22	28	32	28	32	28	32	30
1981	21	28	21	30	21	29	22	29	32	28	33	28	32	31
1982	22	28	22	30	22	30	23	29	34	29	34	29	34	31
1983	21	26	21	28	21	27	23	30	34	28	35	29	34	32
1984	21	28	21	30	21	29	23	30	34	29	34	30	34	32

TABLE 14

UNDERGRADUATE ENROLLMENT BY AGE
1984

AGE	IN-STATE STUDENTS								OUT-OF-STATE STUDENTS							
	MEN				WOMEN				MEN				WOMEN			
	FULL-TIME N	%	PART-TIME N	%	FULL-TIME N	%	PART-TIME N	%	FULL-TIME N	%	PART-TIME N	%	FULL-TIME N	%	PART-TIME N	%
Less than 18	7	.2			21	.6			9	.2			12	.3		
18	156	4.2	8	.2	280	7.6	16	.4	39	1.1	4	.1	57	1.5	1	*
19	195	5.3	9	.2	335	9.1	15	.4	64	1.7	3	.1	50	1.4	3	.1
20	145	4.0	13	.4	277	7.5	19	.5	27	.7			41	1.1	1	*
21	129	3.5	11	.3	265	7.2	28	.8	40	1.1	1	*	32	1.0	5	.1
22	113	3.1	21	.6	157	4.2	31	.8	16	.4	3	.1	15	.4	2	.1
23	41	1.1	21	.6	55	1.5	28	.8	8	.2	2	.1	7	.2		
24	28	.8	8	.2	22	.6	16	.4	9	.2	1	*	5	.1	1	*
25 - 30	61	1.7	68	1.9	87	2.4	97	2.6	17	.5	3	.1	12	.3	5	.1
31 - 35	20	.5	31	.8	40	1.1	71	2.0	3	.1					1	*
36 - 40	7	.2	26	.7	28	1.0	49	1.3								
41 - 50	6	.2	12	.3	27	.7	47	1.3	1	*						
51 - 64	1	*	1	*	4	.1	12	.3								
65 and over			1	*			2	.1								
TOTALS	909	24.8	230	6.2	1598	43.6	431	11.7	233	6.2	17	.4	231	6.3	19	.5

* Less than .05%.

FIGURE 4.

FIVE-YEAR COMPARISON OF TRADITIONAL VERSUS NON-TRADITIONAL UNDERGRADUATE STUDENTS

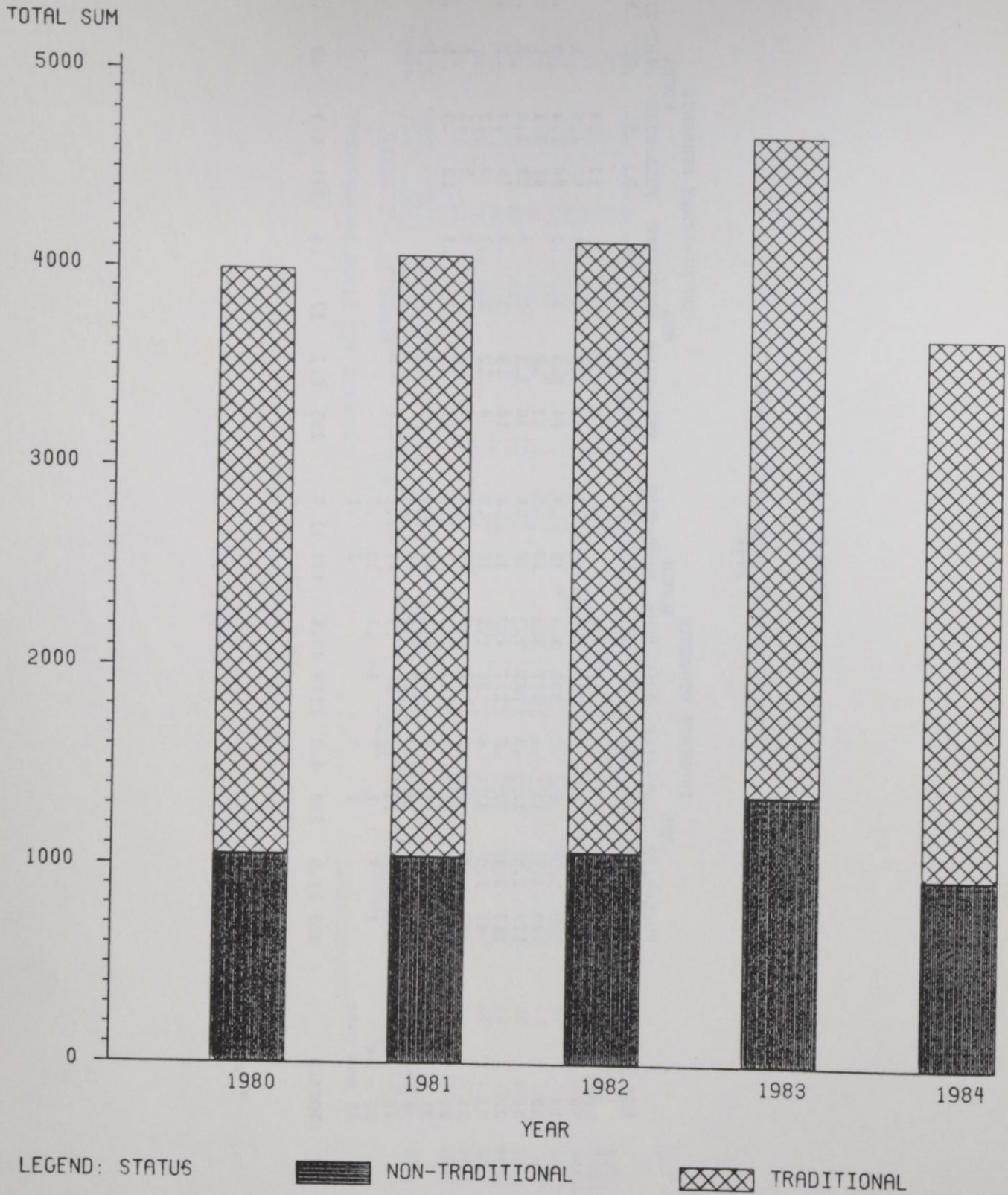


TABLE 15

GRADUATE AND FIRST PROFESSIONAL ENROLLMENT BY AGE
1984

AGE	IN-STATE STUDENTS								OUT-OF-STATE STUDENTS							
	MEN				WOMEN				MEN				WOMEN			
	FULL-TIME N	%	PART-TIME N	%	FULL-TIME N	%	PART-TIME N	%	FULL-TIME N	%	PART-TIME N	%	FULL-TIME N	%	PART-TIME N	%
less than 18																
18																
19	1	.1					1	.1								
20	1	.1			1	.1									1	.1
21					3	.3									1	.1
22	6	.7	3	.3	10	1.1	3	.3					3	.3		
23	15	1.7	1	.1	17	1.9	10	1.1	2	.2			5	.6	1	.1
24	14	1.6	6	.7	22	2.5	14	1.6	4	.5	1	.1	3	.3	2	.2
25 - 30	65	7.3	39	4.4	61	7.0	92	10.4	13	1.5	3	.3	11	1.2	7	.8
31 - 35	30	3.3	36	4.1	23	2.6	80	9.0	1	.1	1	.1	3	.3	2	.2
36 - 40	16	1.8	25	2.8	15	1.7	66	7.5	2	.2	3	.3	2	.2		
41 - 50	8	1.0	17	1.9	14	1.6	73	8.3	3	.3						
51 - 64	6	.7	5	.6	3	.3	6	.7								
65 and over	1	.1					1	.1								
TOTAL	163	18.4	132	14.9	169	19.1	346	39.1	25	2.8	8	.8	27	2.9	14	1.5

TABLE 16

GEOGRAPHIC ORIGIN OF STUDENTS
1968 - 1984

GEOGRAPHIC ORIGIN	1968		1971		1974		1977		1980		1982		1983		1984	
	N	%	N	%	N	%	N	%	N	%	N	%	N	%	N	%
Durham County	512	17	880	24	1096	25	1231	25	1219	25	1259	25	1261	24	1260	28
Adjacent Counties	295	10	421	11	528	12	653	14	700	14	694	14	724	14	707	16
Other N. C. Counties	1777	58	2033	55	2320	53	2477	51	2420	49	2379	48	2516	48	2015	44
Out-of-State	458	15	389	10	447	10	494	10	571	12	585	12	647	12	504	11
U. S. Territories											1	0	1	0	3	0
Foreign Countries *											72	1	79	2	63	1
TOTALS	3042	100	3723	100	4391	100	4855	100	4910	100	4990	100	5228	100	4552	100

* Prior to 1981, foreign students were classified as out-of-state.

TABLE 17
 DISTRIBUTION OF STUDENTS BY STATE
 Fall, 1984

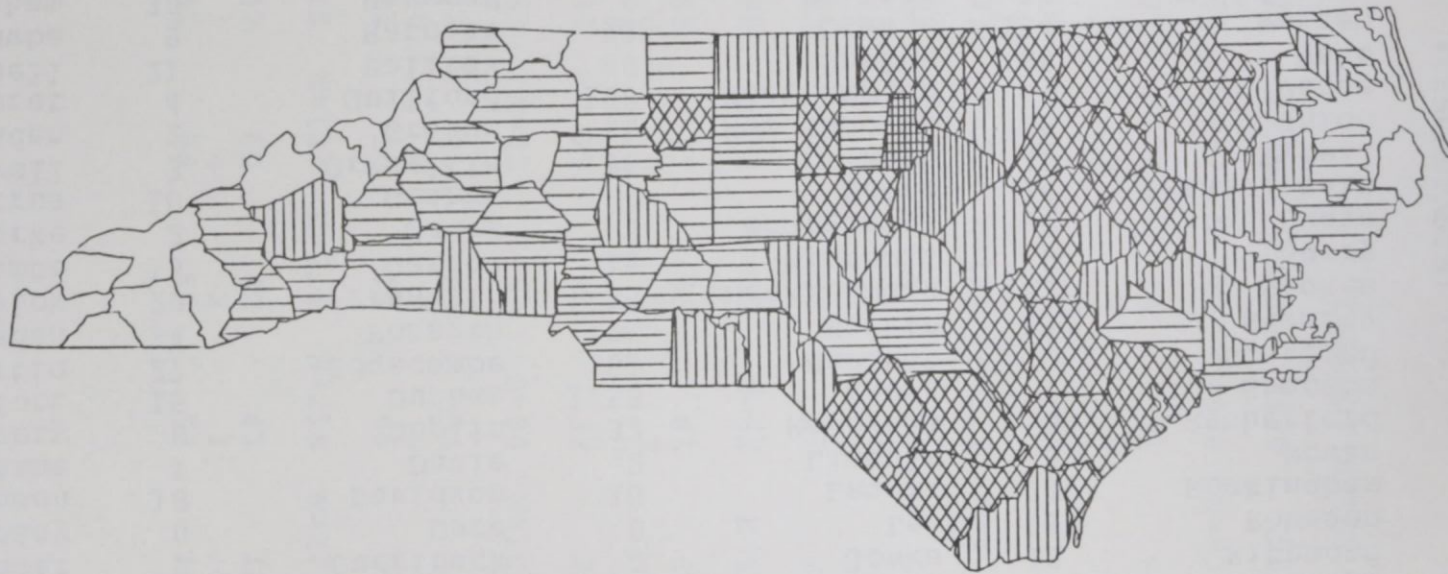
<u>STATE</u>	<u>NUMBER</u>	<u>STATE</u>	<u>NUMBER</u>
Alabama	3	Nebraska	0
Alaska	0	Nevada	0
Arizona	1	New Hampshire	0
Arkansas	0	New Jersey	66
California	9	New Mexico	0
Colorado	1	New York	81
Connecticut	8	North Carolina	3982
Delaware	2	North Dakota	0
District of Columbia	42	Ohio	8
Florida	8	Oklahoma	0
Georgia	8	Oregon	0
Hawaii	0	Pennsylvania	38
Idaho	0	Rhode Island	0
Illinois	6	South Carolina	40
Indiana	2	South Dakota	0
Iowa	0	Tennessee	5
Kansas	1	Texas	0
Kentucky	0	Utah	0
Louisiana	2	Vermont	0
Maine	0	Virginia	76
Maryland	74	Washington	2
Massachusetts	9	West Virginia	0
Michigan	9	Wisconsin	0
Minnesota	0	Wyoming	0
Mississippi	1	U.S. Territories	3
Missouri	2	Foreign Countries	63
Montana	0		
		TOTAL	4552

FIGURE 6.

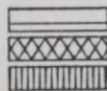
GEOGRAPHIC ORIGIN BY COUNTIES

UNDERGRADUATE & GRADUATE STUDENTS
NORTH CAROLINA CENTRAL UNIVERSITY
1984-1985

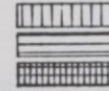
51



LEGEND: COUNT



1 TO 10
26 TO 100
201 TO 1000



11 TO 25
101 TO 200
GREATER THAN 1000

OFFICE OF RESEARCH, EVALUATION AND PLANNING

TABLE 18

DISTRIBUTION OF NORTH CAROLINA STUDENTS BY COUNTY
FALL, 1984

<u>COUNTY</u>	<u>NUMBER</u>	<u>COUNTY</u>	<u>NUMBER</u>	<u>COUNTY</u>	<u>NUMBER</u>	<u>COUNTY</u>	<u>NUMBER</u>
Alamance	33	Cumberland	166	Johnston	12	Randolph	6
Alexander	0	Currituck	0	Jones	10	Richmond	24
Alleghany	0	Dare	0	Lee	13	Robeson	47
Anson	18	Davidson	10	Lenoir	24	Rockingham	11
Ashe	1	Davie	2	Lincoln	6	Rowan	24
Avery	0	Duplin	32	McDowell	2	Rutherford	6
Beaufort	15	Durham	1253	Macon	0	Sampson	36
Bertie	27	Edgecombe	81	Madison	0	Scotland	20
Bladen	34	Forsyth	76	Martin	23	Stanley	4
Brunswick	20	Franklin	25	Mecklenburg	163	Stokes	7
Buncombe	13	Gaston	15	Mitchell	0	Surry	0
Burke	2	Gates	8	Montgomery	8	Swain	0
Cabarrus	10	Graham	0	Moore	14	Transylvania	1
Caldwell	3	Granville	86	Nash	41	Tyrell	4
Camden	1	Greene	11	New Hanover	40	Union	8
Carteret	4	Guilford	108	Northampton	44	Vance	55
Caswell	21	Halifax	66	Onslow	36	Wake	383
Catawba	9	Harnett	23	Orange	154	Warren	42
Chatham	38	Haywood	2	Pamlico	12	Washington	21
Cherokee	0	Henderson	3	Pasquotank	18	Watauga	0
Chowan	11	Hertford	50	Pender	28	Wayne	98
Clay	0	Hoke	10	Perquimans	10	Wilkes	3
Cleveland	19	Hyde	5	Person	47	Wilson	61
Columbus	34	Iredell	4	Pitt	43	Yadkin	1
Craven	19	Jackson	0	Polk	0	Yancey	0

TOTAL 3978

TABLE 19

STUDENTS ENROLLED, GRADUATED, SUSPENDED, AND NOT ENROLLED
AFTER INITIAL ENTRY YEAR
(PERCENTAGES)

CLASS	YEAR OF ENTRY							
	1977	1978	1979	1980	1981	1982	1983	1984
FRESHMEN	N=867	N=837	N=854	N=986	N=930	N=918	N=990	N=769
Enrolled	77	75	74	71	66	77	62	
Graduated	0	0	0	0	0	0	0	
Suspended	7	7	8	11	6	3	6	
Not Enrolled	16	18	17	28	27	19	32	
LOWER LEVEL TRANSFERS	N=77	N=83	N=121	N=119	N=102	N=146	N=151	N=152
Enrolled	71	67	68	67	68	70	64	
Graduated	3	0	1	0	1	0	0	
Suspended	5	5	4	6	2	3	3	
Not Enrolled	23	27	27	27	29	27	33	
UPPER LEVEL TRANSFERS	N=88	N=73	N=85	N=62	N=53	N=42	N=80	N=54
Enrolled	65	71	55	66	64	79	56	
Graduated	0	0	0	2	4	0	1	
Suspended	0	0	4	0	0	0	1	
Not Enrolled	35	29	41	32	30	21	41	
FIRST PROFESSIONAL	N=83	N=83	N=87	N=94	N=109	N=128	N=133	N=104
Enrolled	78	80	89	54	78	82	71	
Graduated	0	0	0	0	0	0	2	
Not Enrolled	21	20	11	46	22	18	27	
MASTERS	N=115	N=121	N=214	N=218	N=277	N=157	N=208	N=264
Enrolled	47	60	42	47	46	43	45	
Graduated	1	4	2	1	5	6	6	
Not Enrolled	52	36	56	52	49	51	50	

TABLE 20

FIRST TIME NORTH CAROLINA CENTRAL UNIVERSITY
 FRESHMEN ENOLLED OR GRADUATED
 (percentages)

	<u>YEAR OF INITIAL ENTRY</u>						
	<u>1977</u>	<u>1978</u>	<u>1979</u>	<u>1980</u>	<u>1981</u>	<u>1982</u>	<u>1983</u>
AFTER ONE YEAR	77%	75%	74%	71%	66%	77%	62%
AFTER TWO YEARS	64%	60%	64%	62%	56%	48%	
AFTER THREE YEARS	58%	57%	58%	55%	42%		
AFTER FOUR YEARS	49%	49%	46%	39%			
AFTER FIVE YEARS	45%	44%	40%				
AFTER SIX YEARS	46%	43%					
AFTER SEVEN YEARS	47%						

TABLE 21

FIRST TIME FRESHMEN IN THE UNIVERSITY OF NORTH CAROLINA
SYSTEM ENROLLED OR GRADUATED
(percentages)

	<u>YEAR OF INITIAL ENTRY</u>						
	<u>1977</u>	<u>1978</u>	<u>1979</u>	<u>1980</u>	<u>1981</u>	<u>1982</u>	<u>1983</u>
AFTER ONE YEAR	77%	77%	78%	76%	76%	78%	76%
AFTER TWO YEARS	64%	65%	62%	64%	63%	63%	
AFTER THREE YEARS	61%	59%	59%	59%	57%		
AFTER FOUR YEARS	51%	54%	54%	54%			
AFTER FIVE YEARS	51%	53%	53%				
AFTER SIX YEARS	52%	54%					
AFTER SEVEN YEARS	54%						

TABLE 22

 UNDERGRADUATE DEGREES CONFERRED BY FIELD OF STUDY
 1967 - 1984

DISCIPLINE, DIVISION AND SPECIALTY	1967		1972		1977		1981		1982		1983		1984	
	N	g	N	g	N	g	N	g	N	g	N	g	N	g
BIOLOGICAL SCIENCES														
Biology, General	19	5.9	24	4.1	30	4.8	20	3.5	22	4.5	20	4.4	21	4.2
BUSINESS AND MANAGEMENT														
Accounting	12	3.7	30	5.2	26	4.1	36	6.3	25	5.1	19	4.2	22	4.4
Business Economics	10	3.1	1	.2	3	.5	1	.2						
Business Management and Administration	4	1.2	50	8.6	119	18.9	106	18.4	74	15.1	67	15.0	112	22.6
EDUCATION														
Business, Commerce & Distributive Education	35	10.9	59	10.0	22	3.5	30	5.2	14	2.8	10	2.2	7	1.4
Elementary Education, General			27	4.6	68	11.0	59	10.2	53	10.8	43	9.5	27	5.5
Health Education	24	7.5	14	2.4	22	3.5	7	1.2	12	2.4	15	3.3	4	.8
Physical Education	18	5.6	29	5.0	15	2.4	13	2.3	10	2.0	5	1.1	5	1.0
FINE AND APPLIED ARTS														
Art	2	.6	5	.9	11	1.8	13	2.3	12	2.4	15	3.3	18	3.6
Dramatic Arts			6	1.0	1	.2	9	1.6	2	.4			2	.4
Music					10	1.6	11	2.0	9	1.8	7	1.6	5	1.0
FOREIGN LANGUAGES														
French	20	6.2	5	.9	1	.2	1	.2					2	.4
German			1	.2										
Spanish			4	.7			1	.2					1	.2
HEALTH PROFESSIONS														
Nursing	4	1.2	13	2.2	41	6.5	35	6.1	23	4.7	28	6.2	49	10.0
HOME ECONOMICS														
Clothing and Textiles			6	1.0	8	1.3	6	1.0	10	2.0	6	1.3	7	1.4
Foods and Nutrition			2	.3	1	.2	6	1.0			8	1.8	5	1.0
Home Economics, General			10	1.7	3	.5	10	1.7	9	1.8	8	1.8	12	2.4
LETTERS														
English, General	27	8.4	21	3.6	23	3.7	19	3.3	19	3.9	20	4.4	15	3.0
Philosophy					1	2.0			2	.4			2	.4
MATHEMATICS														
Mathematics, General	12	3.7	13	2.2	9	1.4	7	1.2	7	1.4	9	2.0	13	2.6
PHYSICAL SCIENCE														
Chemistry	6	1.9	7	1.2	4	.6	6	1.0	5	1.0	4	1.0	11	2.2
Physics			2	.3							1	.2		
PSYCHOLOGY														
Psychology, General	13	4.1	22	3.8	39	6.2	25	4.3	17	3.5	19	4.2	18	3.6

PUBLIC AFFAIRS AND SERVICES

Criminal Justice Administration
Parks and Recreation

23 3.7 46 8.0 52 10.6 42 9.2 55 11.1
14 2.4 15 3.1 10 2.2 9 1.8

SOCIAL SCIENCES

Afro-American Studies
History
Geography
Political Science & Government
Social Sciences, General
Sociology

27 8.3 44 7.6 20 3.2 7 1.2 8 2.0 7 1.6 7 1.4
17 5.3 14 2.4 9 1.4 15 2.6 10 2.0 6 1.3 3 .6
7 2.2 30 5.2 55 8.8 55 9.5 58 11.8 48 10.6 43 9.0
2 .6 3 .5 4 .6 1 .2 1 .2 1 .2
35 10.9 106 18.2 31 4.9 18 3.1 21 4.3 34 7.5 19 3.8

TOTALS

322 100 582 100 630 100 576 100 490 100 451 100 495 100

TABLE 23

GRADUATE DEGREES CONFERRED BY FIELD OF STUDY
1967 - 1984

DISCIPLINE, DIVISION AND SPECIALTY	1967		1972		1977		1981		1982		1983		1984	
	N	%	N	%	N	%	N	%	N	%	N	%	N	%
BIOLOGICAL SCIENCES														
Biology, General	5	3.7	4	3.0	3	1.2	5	2.3	6	2.4	6	2.6	7	3.1
BUSINESS AND MANAGEMENT														
Business Management and Administration			6	4.4	11	4.5	18	8.3	18	7.3	8	3.4	7	3.1
EDUCATION														
Business, Commerce & Distributive Education	13	9.7	5	3.7	7	2.9	3	1.4	5	2.0	5	2.1	5	2.2
Special Education			13	9.6	28	11.6	18	8.3	31	12.7	29	12.4	19	8.3
Educational Administration & Supervision	3	2.2	7	5.2	19	7.9	14	6.4	9	3.7	18	7.7	10	4.4
Educational Media			1	.7	11	4.5	4	1.8	9	3.7	6	2.6	23	10.1
Elementary Education, General	52	39.9	8	5.9	20	8.3	2	.9	17	7.0	18	7.7	17	7.5
Physical Education	7	5.2	3	2.2	4	1.6	4	1.8	6	2.4	1	.4	1	.4
Speech Correction			1	.7	8	3.3	5	2.3	6	2.4	4	1.7	3	1.3
Student Personnel, Guidance & Counseling	8	6.0	12	8.9	34	14.0	35	16.0	29	11.8	27	11.6	25	11.0
FINE AND APPLIED ARTS														
Music			5	3.7	5	2.1	5	2.3			2	.9		
FOREIGN LANGUAGE														
French	1	.7	1	.7									1	.4
HOME ECONOMICS														
Home Economics, General			2	1.5			2	.9	2	.8	2	.9	8	3.5
LAW														
Juris Doctor's	18	13.4	33	24.4	43	17.8	67	30.7	63	26.0	51	21.9	70	30.7
LETTERS														
English, General	2	1.5	2	1.5	4	1.6			4	1.6			2	1.0
LIBRARY SCIENCE														
Library Science, General			17	12.6	22	9.0	18	8.3	26	10.6	40	17.2	19	8.3
MATHEMATICS														
Mathematics, General					2	.8			1	.4	1	.4	1	.4
PHYSICAL SCIENCE														
Chemistry, General	3	2.2	2	1.5	4	1.6	2	.9	1	.4	2	.9	1	.4
PSYCHOLOGY														
Psychology, General							8	3.7	6	2.4	5	2.1	5	2.2
PUBLIC AFFAIRS AND SERVICES														
Park and Recreation Management									2	.8	3	1.3		
SOCIAL SCIENCES														
History	9	6.7	4	3.0	10	4.1	5	2.3	2	.8	2	.9	3	1.3
Sociology	1	.7	2	1.5	2	.8	3	1.4	2	.8	3	1.3	1	.4
TOTALS	134	100	135	100	242	100	218	100	245	100	233	100	228	100

PUBLIC AFFAIRS AND SERVICES

Criminal Justice Administration
Parks and Recreation

23 3.7 46 8.0 52 10.6 42 9.2 55 11.1
14 2.4 15 3.1 10 2.2 9 1.8

SOCIAL SCIENCES

Afro-American Studies
History
Geography
Political Science & Government
Social Sciences, General
Sociology

27 8.3 44 7.6 20 3.2 7 1.2 8 2.0 7 1.6 7 1.4
17 5.3 14 2.4 9 1.4 15 2.6 10 2.0 6 1.3 3 .6
7 2.2 30 5.2 55 8.8 55 9.5 58 11.8 48 10.6 43 9.0
2 .6 3 .5 4 .6 1 .2 1 .2 1 .2
35 10.9 106 18.2 31 4.9 18 3.1 21 4.3 34 7.5 19 3.8

TOTALS

322 100 582 100 630 100 576 100 490 100 451 100 495 100

TABLE 23

GRADUATE DEGREES CONFERRED BY FIELD OF STUDY
1967 - 1984

DISCIPLINE, DIVISION AND SPECIALTY	1967		1972		1977		1981		1982		1983		1984	
	N	%	N	%	N	%	N	%	N	%	N	%	N	%
BIOLOGICAL SCIENCES														
Biology, General	5	3.7	4	3.0	3	1.2	5	2.3	6	2.4	6	2.6	7	3.1
BUSINESS AND MANAGEMENT														
Business Management and Administration			6	4.4	11	4.5	18	8.3	18	7.3	8	3.4	7	3.1
EDUCATION														
Business, Commerce & Distributive Education	13	9.7	5	3.7	7	2.9	3	1.4	5	2.0	5	2.1	5	2.2
Special Education			13	9.6	28	11.6	18	8.3	31	12.7	29	12.4	19	8.3
Educational Administration & Supervision	3	2.2	7	5.2	19	7.9	14	6.4	9	3.7	18	7.7	10	4.4
Educational Media			1	.7	11	4.5	4	1.8	9	3.7	6	2.6	23	10.1
Elementary Education, General	52	39.9	8	5.9	20	8.3	2	.9	17	7.0	18	7.7	17	7.5
Physical Education	7	5.2	3	2.2	4	1.6	4	1.8	6	2.4	1	.4	1	.4
Speech Correction			1	.7	8	3.3	5	2.3	6	2.4	4	1.7	3	1.3
Student Personnel, Guidance & Counseling	8	6.0	12	8.9	34	14.0	35	16.0	29	11.8	27	11.6	25	11.0
FINE AND APPLIED ARTS														
Music			5	3.7	5	2.1	5	2.3			2	.9		
FOREIGN LANGUAGE														
French	1	.7	1	.7									1	.4
HOME ECONOMICS														
Home Economics, General			2	1.5			2	.9	2	.8	2	.9	8	3.5
LAW														
Juris Doctor's	18	13.4	33	24.4	43	17.8	67	30.7	63	26.0	51	21.9	70	30.7
LETTERS														
English, General	2	1.5	2	1.5	4	1.6			4	1.6			2	1.0
LIBRARY SCIENCE														
Library Science, General			17	12.6	22	9.0	18	8.3	26	10.6	40	17.2	19	8.3
MATHEMATICS														
Mathematics, General					2	.8			1	.4	1	.4	1	.4
PHYSICAL SCIENCE														
Chemistry, General	3	2.2	2	1.5	4	1.6	2	.9	1	.4	2	.9	1	.4
PSYCHOLOGY														
Psychology, General							8	3.7	6	2.4	5	2.1	5	2.2
PUBLIC AFFAIRS AND SERVICES														
Park and Recreation Management									2	.8	3	1.3		
SOCIAL SCIENCES														
History	9	6.7	4	3.0	10	4.1	5	2.3	2	.8	2	.9	3	1.3
Sociology	1	.7	2	1.5	2	.8	3	1.4	2	.8	3	1.3	1	.4
TOTALS	134	100	135	100	242	100	218	100	245	100	233	100	228	100

TABLE 24

STUDENT FINANCIAL AID
1983 - 1984

<u>SCHOLARSHIPS, GRANTS AND AWARDS</u>	<u>NUMBER</u>	<u>AVERAGE AWARD</u>	<u>TOTAL AMOUNT</u>
<u>UNDERGRADUATE</u>			
Non-Athletic	504	\$ 510.50	\$ 257,290
Athletic	114	1,082.43	123,397
SEOG (1)	1,540	458.80	706,553
BEOG (2)	2,468	1,217.34	3,004,391
HPEAA (3) and Nursing Assistance	0	0	0
<u>LAW SCHOOL</u>			
Assistance to Professional Students	91	647.69	58,940
<u>GRADUATE SCHOOL</u>			
Fellowships, Traineeships, Grants & Scholarships	43	2,532.60	108,902
Assistantships	46	1,153.57	53,064
<u>STUDENT EMPLOYMENT</u>			
<u>UNDERGRADUATE</u>			
College Work-Study	1,324	498.52	660,035
PACE Jobs	0	0	0
Other Student Employment	112	1,111.85	124,527
<u>GRADUATE SCHOOL</u>			
College Work-Study	128	448.20	57,369
<u>STUDENT LOANS</u>			
<u>UNDERGRADUATE</u>			
Nursing Loans	12	600.00	7,200
Out-of-State GSL (4)	494	2,611.15	1,289,908

- (1) Supplemental Education Opportunity Grant
- (2) Basic Educational Opportunity Grant
- (3) Health Professions Education Assistance Act
- (4) Guaranteed Student Loans

TABLE 25
FINANCIAL AID AWARDS
1980 - 1984

	<u>1980-1981</u>	<u>1981-1982</u>	<u>1982-1983</u>	<u>1983-1984</u>
TOTAL NUMBER OF APPLICANTS	5131	4341	4188	4095
APPLICANTS WHO ACTUALLY ENROLLED	3996	3694	3927	3564
NUMBER OF AWARDS AND LOANS	8109	7389	7987	8907
UNDUPLICATED NUMBER OF AID RECIPIENTS	4636	4003	3892	3787
% OF ENROLLED STUDENTS RECEIVING AID	94.4	81.0	78.0	83.2
DOLLAR AMOUNT OF AWARDS AND LOANS	\$6,985,464	\$6,924,042	\$7,371,520	\$8,675,205
MEAN AWARD	\$861	\$937	\$923	\$974
MEAN AWARD PER RECIPIENT	\$1,507	\$1,730	\$1,894	\$1,875

TABLE 24

STUDENT FINANCIAL AID
1983 - 1984

<u>SCHOLARSHIPS, GRANTS AND AWARDS</u>	<u>NUMBER</u>	<u>AVERAGE AWARD</u>	<u>TOTAL AMOUNT</u>
<u>UNDERGRADUATE</u>			
Non-Athletic	504	\$ 510.50	\$ 257,290
Athletic	114	1,082.43	123,397
SEOG (1)	1,540	458.80	706,553
BEOG (2)	2,468	1,217.34	3,004,391
HPEAA (3) and Nursing Assistance	0	0	0
<u>LAW SCHOOL</u>			
Assistance to Professional Students	91	647.69	58,940
<u>GRADUATE SCHOOL</u>			
Fellowships, Traineeships, Grants & Scholarships	43	2,532.60	108,902
Assistantships	46	1,153.57	53,064
<u>STUDENT EMPLOYMENT</u>			
<u>UNDERGRADUATE</u>			
College Work-Study	1,324	498.52	660,035
PACE Jobs	0	0	0
Other Student Employment	112	1,111.85	124,527
<u>GRADUATE SCHOOL</u>			
College Work-Study	128	448.20	57,369
<u>STUDENT LOANS</u>			
<u>UNDERGRADUATE</u>			
Nursing Loans	12	600.00	7,200
Out-of-State GSL (4)	494	2,611.15	1,289,908

- (1) Supplemental Education Opportunity Grant
- (2) Basic Educational Opportunity Grant
- (3) Health Professions Education Assistance Act
- (4) Guaranteed Student Loans

TABLE 25
FINANCIAL AID AWARDS
1980 - 1984

	<u>1980-1981</u>	<u>1981-1982</u>	<u>1982-1983</u>	<u>1983-1984</u>
TOTAL NUMBER OF APPLICANTS	5131	4341	4188	4095
APPLICANTS WHO ACTUALLY ENROLLED	3996	3694	3927	3564
NUMBER OF AWARDS AND LOANS	8109	7389	7987	8907
UNDUPLICATED NUMBER OF AID RECIPIENTS	4636	4003	3892	3787
% OF ENROLLED STUDENTS RECEIVING AID	94.4	81.0	78.0	83.2
DOLLAR AMOUNT OF AWARDS AND LOANS	\$6,985,464	\$6,924,042	\$7,371,520	\$8,675,205
MEAN AWARD	\$861	\$937	\$923	\$974
MEAN AWARD PER RECIPIENT	\$1,507	\$1,730	\$1,894	\$1,875

FACTS ABOUT FACULTY AND STAFF

LIST OF TABLES AND FIGURES

		<u>Page</u>
<u>Instructional Faculty</u>		
TABLE	26: Instructional Staffing Patterns by Department and Rank, Fall 1972-1984	62
TABLE	27: Tenure for Full-Time Faculty by Department, Fall 1984	67
TABLE	28: Tenure for Full-Time Faculty by Rank and Sex, Fall 1980-1984	68
FIGURE	7: Ten-Year Change of Rank and Tenure Status Full-Time Faculty for 1974 and 1984	69
TABLE	29: Highest Earned Degree for Full-Time Faculty by Department, Fall 1984	70
TABLE	30: Summary of Highest Earned Degrees for Full-Time Faculty, 1968-1984	72
TABLE	31: Race and Sex of Full-Time Faculty by Department and Academic Rank, Fall 1984	73
TABLE	32: Summary of Race and Sex by Academic Rank for Full-Time Faculty, Fall 1984	77
TABLE	33: Mean Salaries by Rank, 1968-1984	78
TABLE	34: Mean Salaries of Professors by Race and Sex, 1974-1984	79
TABLE	35: Mean Salaries of Associate Professors by Race and Sex, 1974-1984	79
TABLE	36: Mean Salaries of Assistant Professors by Race and Sex, 1974-1984	80
TABLE	37: Mean Salaries of Instructors by Race and Sex, 1974-1984	80
TABLE	38: Summary of Mean Salaries by Rank, Race, and Sex, Fall 1984	81
<u>All NCCU Faculty and Staff</u>		
TABLE	39: Full-Time EPA and SPA by Occupational Activity Category, Race, and Sex, Fall 1984	82
TABLE	40: New Full-Time Employees by Race and Sex, Fall 1984	83
TABLE	41: Retirements, Resignations and Dismissals of Full-Time Employees, Fall 1984	84
TABLE	42: Promotions of Full-Time Employees, Fall 1984	85
TABLE	43: Mean Salary by Occupational Activity Category, Race and Sex, Fall 1984	86
TABLE	44: Mean Salary of Selected Positions, Fall 1984	87

TABLE 26

INSTRUCTIONAL STAFFING PATTERNS BY
DEPARTMENT AND RANK, FALL 1972 - 1984

DEPARTMENT AND ACADEMIC RANK	1972	1977	1982	1983	1984		TOTAL	FTE
					FULL-TIME	PART-TIME		
ART								
Professor			1	1				
Associate Professor	1	2	3	4	4		4	4.0
Assistant Professor	1	3	3	2	1		1	1.0
Instructor	5							
Lecturer		6	1					
Adjunct or Visiting			1	1				
Total	7	11	9	8	5		5	5.0
BIOLOGY								
Professor	6	3	3	3	3		3	3.0
Associate Professor	3	5	5	5	5		5	5.0
Assistant Professor	3	3	2	2	2		2	2.0
Instructor	5							
Lecturer		4	5	4		2	2	.6
Adjunct or Visiting			3	1	3	1	4	3.7
Total	17	15	18	15	13	3	16	14.3
BUSINESS *								
Professor			2	2	4		4	4.0
Associate Professor			2	1	14		14	14.0
Assistant Professor			1	3	20		20	20.0
Instructor			2	2	3		3	3.0
Lecturer			1		2		2	2.0
Adjunct or Visiting				1	2		2	2.0
Total			8	9	45		45	45.0
CENTER FOR ACADEMIC ENRICHMENT								
Professor								
Associate Professor	1	1	1	2	1		1	1.0
Assistant Professor		2		1			1	.5
Instructor	8	7	10	12	9	1	9	9.0
Lecturer		10	1					
Adjunct or Visiting			7	5	2		2	2.0
Total	9	20	19	20	12	1	13	12.5
CHEMISTRY								
Professor	3	1	3	3	3		3	3.0
Associate Professor	2	3	2	2	2		2	2.0
Assistant Professor	3	1	1	1	1		1	1.0
Instructor								
Lecturer		2	2					
Adjunct or Visiting								
Total	8	7	8	6	6		6	6.0

* Prior to this year Business included the departments of Accounting, Economics/Finance, Management and Marketing, and Business Education/Administrative Services. These are now included under the single listing of Business.

TABLE 26

(continued)

INSTRUCTIONAL STAFFING PATTERNS BY
DEPARTMENT AND RANK, FALL 1972 - 1984

DEPARTMENT AND ACADEMIC RANK	1972	1977	1982	1983	1984		TOTAL	FTE
					FULL-TIME	PART-TIME		
DRAMA								
Professor			1	1	1		1	1.0
Associate Professor	1	1			2		2	2.0
Assistant Professor		1	3	3	1		1	1.0
Instructor	4	3						
Lecturer		1	1					
Adjunct or Visiting								
Total	5	6	5	4	4		4	4.0
EDUCATION								
Professor	11	8	6	6	9		9	9.0
Associate Professor	10	10	10	9	9		9	9.0
Assistant Professor	10	6	6	7	5	1	6	5.3
Instructor	5		1					
Lecturer		9	1	2		1	1	.7
Adjunct or Visiting			4	3	1		1	1.0
Total	36	33	28	27	24	2	26	25.0
ENGLISH								
Professor	4	3	4	3	3		3	3.0
Associate Professor	3	7	8	8	8		8	8.0
Assistant Professor	7	6	5	7	8		8	8.0
Instructor	11	3						
Lecturer		6	3	3		1	1	.7
Adjunct or Visiting			2		1		1	1.0
Total	25	25	22	21	20	1	21	20.7
GEOGRAPHY								
Professor	1		1	1	1		1	1.0
Associate Professor		3	3	3	3		3	3.0
Assistant Professor	2		1	1	1		1	1.0
Instructor	2							
Lecturer		2		1	1		1	1.0
Adjunct or Visiting								
Total	5	5	5	6	6		6	6.0
HEALTH EDUCATION								
Professor		1	1	1	1		1	1.0
Associate Professor	2		1	1	1		1	1.0
Assistant Professor								
Instructor	3	3	3	3	3		3	3.0
Lecturer		5	2	1				
Adjunct or Visiting			1					
Total	5	9	8	6	5		5	5.0

TABLE 26

(continued)

INSTRUCTIONAL STAFFING PATTERNS BY
DEPARTMENT AND RANK, FALL 1972 - 1984

DEPARTMENT AND ACADEMIC RANK	1972	1977	1982	1983	1984		TOTAL	FTE
					FULL-TIME	PART-TIME		
HISTORY/SOCIAL SCIENCE								
Professor	3	2	3	3	3		3	3.0
Associate Professor		4	4	4	3		3	3.0
Assistant Professor	2	3	2	4	4		4	4.0
Instructor	7	2						
Lecturer		2	2	1		1	1	.4
Adjunct or Visiting			1					
Total	12	13	12	12	10	1	11	10.4
HOME ECONOMICS								
Professor	2	1						
Associate Professor	1	2	3	3	2		2	2.0
Assistant Professor	2	3	4	4	4		4	4.0
Instructor	5			2		1	1	.7
Lecturer		5	1	3		4	4	2.1
Adjunct or Visiting			3		1		1	1.0
Total	10	11	11	12	7	5	12	9.8
LAW								
Professor	7	4	5	9	7		7	7.0
Associate Professor	1	5	4		2		2	2.0
Assistant Professor	2	5	3	4	4		4	4.0
Instructor								
Lecturer			7	4		3	3	1.3
Adjunct or Visiting			1					
Total	10	14	20	17	13	3	16	14.3
LIBRARY SCIENCE								
Professor	1	2	2	3	2		2	2.0
Associate Professor		1	3	2	2		2	2.0
Assistant Professor	6	2	4	4	4		4	4.0
Instructor	1	2						
Lecturer		1			1		1	1.0
Adjunct or Visiting								
Total	8	8	9	9	9		9	9.0
MATHEMATICS								
Professor	2	2	1	1	1		1	1.0
Associate Professor	2	2	4	4	5		5	5.0
Assistant Professor	3	3	3	3	3		3	3.0
Instructor	3	2	2	1	1		1	1.0
Lecturer		2	4	1	1		1	1.0
Adjunct or Visiting			1	1	1		1	1.0
Total	10	11	15	11	12		12	12.0

TABLE 26
(continued)

INSTRUCTIONAL STAFFING PATTERNS BY
DEPARTMENT AND RANK, FALL 1972 - 1984

DEPARTMENT AND ACADEMIC RANK	1972	1977	1982	1983	1984		TOTAL	FTE
					FULL-TIME	PART-TIME		
MODERN FOREIGN LANGUAGES								
Professor	3	4	2	2	1		1	1.0
Associate Professor	2	4	6	6	5		5	5.0
Assistant Professor	11	6	5	5	5		5	5.0
Instructor	1							
Lecturer		1						
Adjunct or Visiting								
Total	17	15	13	13	11		11	11.0
MUSIC								
Professor	2	2	1	1	2		2	2.0
Associate Professor	3	3	5	5	3		3	3.0
Assistant Professor	1	4	5	5	5		5	5.0
Instructor	5	2	1	1	1		1	1.0
Lecturer		5	1					
Adjunct or Visiting			1	1		1	1	.7
Total	11	16	14	13	11	1	12	11.7
NURSING								
Professor								
Associate Professor	2	1	1	1	2		2	2.0
Assistant Professor	10	7	9	11	10		10	10.0
Instructor	3	1	4	3	1		1	1.0
Lecturer		5	2	1		1	1	.1
Adjunct or Visiting								
Total	15	14	16	16	13	1	14	13.1
PHILOSOPHY								
Professor	1							
Associate Professor		1	1	1	1		1	1.0
Assistant Professor	1	1	1	1	1		1	1.0
Instructor								
Lecturer								
Adjunct or Visiting								
Total	2	2	2	2	2		2	2.0
PHYSICAL EDUCATION								
Professor	2	2		1	1		1	1.0
Associate Professor	2	3	3	2	3		3	3.0
Assistant Professor	7	9	9	8	8		8	8.0
Instructor	9	3	1	3	1	1	2	1.5
Lecturer		1	4	4		1	1	.9
Adjunct or Visiting			2	2	1		1	1.0
Total	20	18	19	20	14	2	16	15.4

TABLE 26

(continued)

INSTRUCTIONAL STAFFING PATTERNS BY
DEPARTMENT AND RANK, FALL 1972 - 1984

DEPARTMENT AND ACADEMIC RANK	1972	1977	1982	1983	FULL-TIME	1984		TOTAL	FTE
						PART-TIME			
PHYSICS									
Professor	2	3	3	3	4			4	4.0
Associate Professor	2	1	1	1					
Assistant Professor	1								
Instructor									
Lecturer		3	1						
Adjunct or Visiting			3	1	1			1	1.0
Total	5	7	8	5	5			5	5.0
POLITICAL SCIENCE									
Professor	1	1		1	1			1	1.0
Associate Professor	1	2	4	4	6			6	6.0
Assistant Professor	5	5	4	3	3			3	3.0
Instructor	1								
Lecturer		10	1	1			1	1	.2
Adjunct or Visiting			2	2	1			1	1.0
Total	8	18	11	11	11		1	12	11.2
PSYCHOLOGY									
Professor	2				1			1	1.0
Associate Professor	1	3	3	3	3			3	3.0
Assistant Professor	1			1	1			1	1.0
Instructor	1		1	1	1			1	1.0
Lecturer		2	3	1					
Adjunct or Visiting									
Total	5	5	7	6	6			6	6.0
SOCIOLOGY									
Professor	4	1	1	1	2			2	2.0
Associate Professor			3	3	2			2	2.0
Assistant Professor	3	4	3	2	2			2	2.0
Instructor	4								
Lecturer				1					
Adjunct or Visiting			1	1	1			1	1.0
Total	11	5	8	8	7			7	7.0
SUMMARY BY RANK AND YEAR									
Professor	53	43	41	47	49			49	49.0
Associate Professor	62	68	88	82	84			84	84.0
Assistant Professor	88	82	84	94	88		2	90	88.8
Instructor	106	38	25	28	19		2	21	20.2
Lecturer		96	47	28	4		15	19	11.3
Adjunct or Visiting			39	20	14		3	17	16.1
GRAND TOTAL BY ACADEMIC YEAR	309	327	324	299	258		22	280	269.4

TABLE 27

TENURE FOR FULL-TIME FACULTY BY DEPARTMENT
FALL 1984

<u>DEPARTMENT</u>	<u>TENURED</u>	<u>%</u>	<u>ON TENURE TRACK</u>	<u>%</u>	<u>NOT ON TRACK</u>	<u>%</u>	<u>TOTAL</u>
Art	2	40.0	3	60.0			5
Biology	7	54.0	3	23.0	3	23.0	13
Business	14	44.0	14	44.0	4	12.0	32
Center for Academic Enrichment	1	8.0			11	92.0	12
Chemistry	5	83.0	1	17.0			6
Drama	1	25.0	3	75.0			4
Education	17	71.0	6	25.0	1	4.0	24
English	14	70.0	5	25.0	1	5.0	20
Geography	4	66.0	1	17.0	1	17.0	6
Health Education	3	60.0	1	20.0	1	20.0	5
History/Social Science	8	80.0	2	20.0			10
Home Economics	4	50.0	2	25.0	2	25.0	8
Law	7	54.0	6	46.0			13
Library Science	5	56.0	3	33.0	1	11.0	9
Mathematics	7	58.0	3	25.0	2	17.0	12
Modern Foreign Language	10	91.0	1	9.0			11
Music	8	73.0	3	27.0			11
Nursing	1	8.0	9	69.0	3	23.0	13
Philosophy	2	100.0					2
Physical Education	10	72.0	3	21.0	1	7.0	14
Physics	4	80.0			1	20.0	5
Political Science	5	45.0	5	45.0	1	10.0	11
Psychology	2	33.0	3	50.0	1	17.0	6
Sociology	4	57.0	2	29.0	1	14.0	7
SUMMARY	145	56.0	79	30.0	35	14.0	259

TABLE 28

TENURE FOR FULL-TIME FACULTY BY RANK AND SEX
FALL 1980 - 1984

ACADEMIC RANK AND YEAR	TOTAL	MALES		TOTAL	FEMALES		GRAND TOTAL	TOTALS	
		NUMBER WITH TENURE	PERCENT WITH TENURE		NUMBER WITH TENURE	PERCENT WITH TENURE		NUMBER WITH TENURE	PERCENT WITH TENURE
1980									
Professor	28	24	85.7	9	9	100.0	37	33	89.2
Associate Professor	52	21	40.4	27	15	55.6	79	36	45.6
Assistant Professor	37	23	62.2	26	17	65.4	63	40	63.5
Instructor	6	1	16.7	25	7	28.0	31	8	25.8
Lecturer	6			8			14		
Total	129	69	53.5	95	48	50.5	264	117	44.3
1981									
Professor	29	26	89.6	11	11	100.0	40	37	92.5
Associate Professor	56	24	42.8	29	16	55.2	85	40	47.1
Assistant Professor	37	20	54.0	37	14	37.8	74	34	45.9
Instructor	6	1	16.7	22	7	31.8	28	8	28.6
Lecturer	5			5			10		
Total	133	71	53.4	104	48	46.2	237	119	50.2
1982									
Professor	25	22	88.0	10	10	100.0	35	32	91.4
Associate Professor	55	24	43.6	28	17	60.7	83	41	49.4
Assistant Professor	38	18	47.4	41	15	36.6	79	33	41.8
Instructor	3	1	33.3	21	6	28.6	24	7	29.2
Lecturer	11			13			24		
Total	132	65	49.2	113	48	42.5	245	113	46.1
1983									
Professor	39	39	100.0	11	11	100.0	50	50	100.0
Associate Professor	61	35	57.4	30	23	76.7	91	58	63.7
Assistant Professor	51	23	45.1	52	15	28.8	103	38	36.9
Instructor	6	1	16.7	24	6	25.0	30	7	23.3
Lecturer	19	0	0	22	0	0	41	0	0
Total	176	98	55.7	139	55	39.6	315	153	48.6
1984									
Professor	38	37	97.0	11	11	100.0	49	48	98.0
Associate Professor	55	32	58.0	29	22	76.0	84	54	64.0
Assistant Professor	45	24	53.0	43	12	28.0	88	36	41.0
Instructor	5	2	40.0	14	5	36.0	19	7	37.0
Lecturer	3			1			4		
Other Faculty	3			11			14		
Total	149	95	64.0	109	50	46.0	258	145	56.0

Note: Data included in this table are for 9-month instructional faculty only. Those on leave are omitted.

FIGURE 7.

TEN-YEAR CHANGE OF RANK AND TENURE STATUS
 FULL-TIME FACULTY FOR 1974 AND 1984

FACULTY SUM

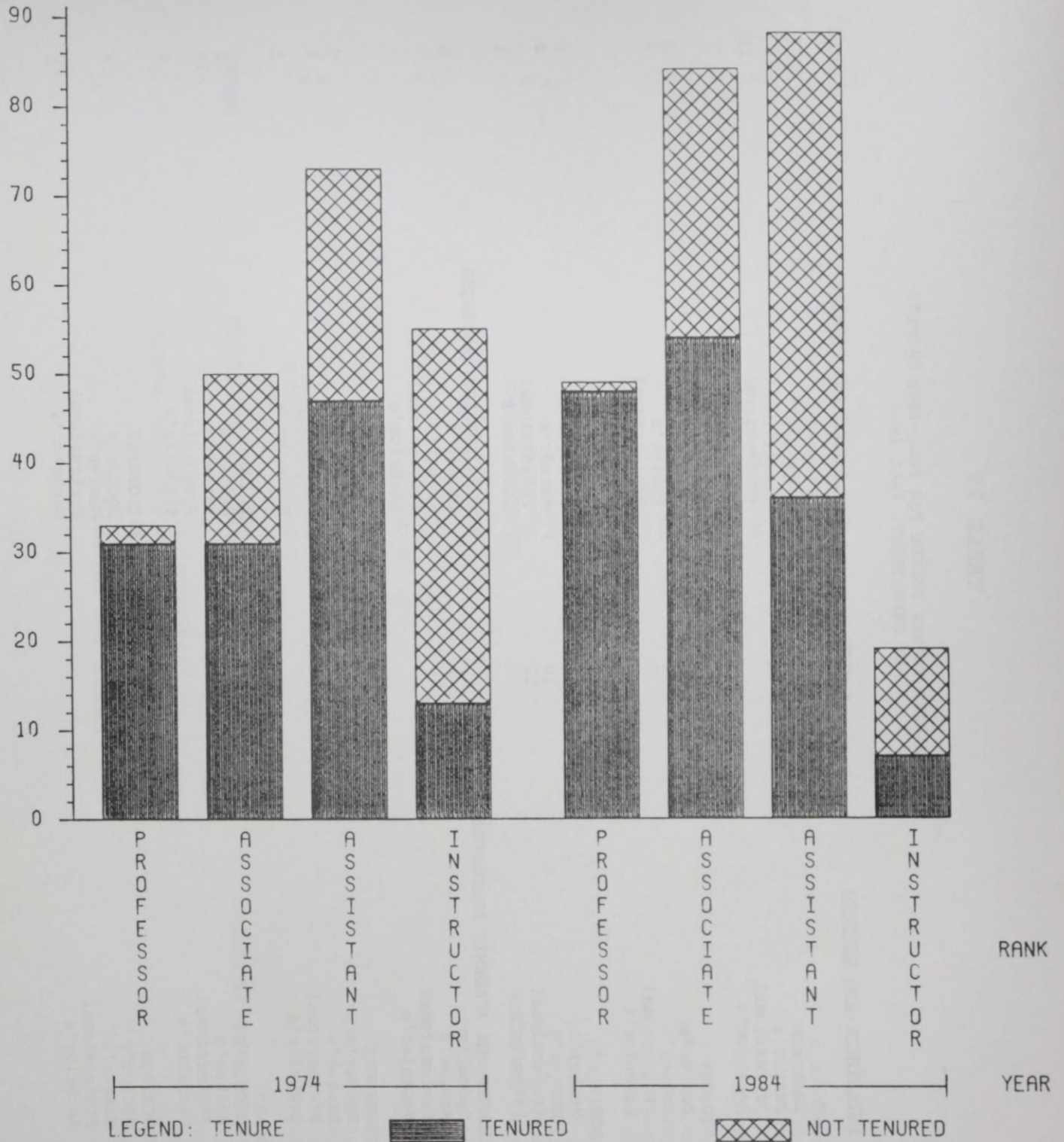


TABLE 29

HIGHEST EARNED DEGREE FOR FULL-TIME FACULTY
BY DEPARTMENT, FALL 1984

DEPARTMENT AND DEGREES	NUMBER	DEPARTMENT AND DEGREES	NUMBER
ART		LAW	
Doctor's	1	Doctor's	
Master's	4	Master's	
Professional		Professional	13
Bachelor's		Bachelor's	
BIOLOGY		LIBRARY SCIENCE	
Doctor's	12	Doctor's	5
Master's	1	Master's	4
Professional		Professional	
Bachelor's		Bachelor's	
BUSINESS		MATHEMATICS	
Doctor's	21	Doctor's	7
Master's	10	Master's	4
Professional	12	Professional	
Bachelor's		Bachelor's	1
CENTER FOR ACADEMIC ENRICHMENT		MODERN FOREIGN LANGUAGES	
Doctor's	1	Doctor's	6
Master's	11	Master's	5
Professional		Professional	
Bachelor's		Bachelor's	
CHEMISTRY		MUSIC	
Doctor's	5	Doctor's	7
Master's	1	Master's	3
Professional		Professional	
Bachelor's		Bachelor's	1
DRAMA		NURSING	
Doctor's	1	Doctor's	2
Master's	3	Master's	10
Professional		Professional	
Bachelor's		Bachelor's	1
EDUCATION		PHILOSOPHY	
Doctor's	21	Doctor's	1
Master's	2	Master's	
Professional		Professional	
Bachelor's		Bachelor's	1

TABLE 29 (CONTINUED)

HIGHEST EARNED DEGREE FOR FULL-TIME FACULTY
BY DEPARTMENT, FALL 1984

DEPARTMENT AND DEGREES	NUMBER	DEPARTMENT AND DEGREES	NUMBER
ENGLISH		PHYSICAL EDUCATION	
Doctor's	14	Doctor's	5
Master's	6	Master's	9
Professional		Professional	
Bachelor's		Bachelor's	
GEOGRAPHY		PHYSICS	
Doctor's	6	Doctor's	5
Master's		Master's	
Professional		Professional	
Bachelor's		Bachelor's	
HEALTH EDUCATION		POLITICAL SCIENCE	
Doctor's	2	Doctor's	9
Master's	3	Master's	1
Professional		Professional	1
Bachelor's		Bachelor's	
HISTORY		PSYCHOLOGY	
Doctor's	7	Doctor's	5
Master's	3	Master's	1
Professional		Professional	
Bachelor's		Bachelor's	
HOME ECONOMICS		SOCIOLOGY	
Doctor's	4	Doctor's	4
Master's	4	Master's	3
Professional		Professional	
Bachelor's		Bachelor's	

TABLE 30

SUMMARY OF HIGHEST EARNED DEGREES FOR
 FULL-TIME FACULTY
 1968 - 1984

DEGREE	1968		1973		1978		1981		1982		1983		1984	
	<u>N</u>	<u>%</u>	<u>N</u>	<u>%</u>	<u>N</u>	<u>%</u>	<u>N</u>	<u>%</u>	<u>N</u>	<u>%</u>	<u>N</u>	<u>%</u>	<u>N</u>	<u>%</u>
Doctor's	84	34.0	103	36.5	90	38.0	134	50.5	154	52.7	163	51.8	151	58.5
Master's	159	64.4	177	62.8	135	57.0	114	43.0	112	38.4	122	38.7	88	34.1
Bachelor's	4	1.6	2	.7	12	5.1	4	1.5	7	2.4	8	2.5	4	1.6
First Professional							13	5.0	19	6.5	20	6.4	15	5.8
Other											2	.6		
GRAND TOTALS	247	100	282	100	237	100	265	100	292	100	315	100	258	100

TABLE 31
 RACE AND SEX OF FULL-TIME FACULTY BY
 DEPARTMENT AND ACADEMIC RANK
 FALL, 1984

DEPARTMENT AND ACADEMIC RANK	BLACK		WHITE		OTHER		TOTAL
	MAN	WOMEN	MEN	WOMEN	MEN	WOMEN	
<u>ART</u>							
Professor							
Associate Professor	1	1	1	1			4
Assistant Professor	1						1
Instructor							
Lecturer							
Adjunct or Visiting							
Total	2	1	1	1			5
<u>BIOLOGY</u>							
Professor	2			1			3
Associate Professor	3	1	1		1		6
Assistant Professor	1	1					2
Instructor							
Lecturer							
Adjunct or Visiting	1	1		1			3
Total	7	3		2	1		13
<u>BUSINESS</u>							
Professor		1	1		1		3
Associate Professor	3	1	6				10
Assistant Professor	8	2	2		3		15
Instructor	1	1					2
Lecturer			1				1
Adjunct or Visiting	1						1
Total	13	5	10		4		32
<u>CENTER FOR ACADEMIC ENRICHMENT</u>							
Professor							
Associate Professor			1				1
Assistant Professor							
Instructor	1	7				1	9
Lecturer							
Adjunct or Visiting		2					2
Total	1	9	1			1	12
<u>CHEMISTRY</u>							
Professor	1		2				3
Associate Professor	1				1		2
Assistant Professor	1						1
Instructor							
Lecturer							
Adjunct or Visiting							
Total	3		2		1		6

TABLE 31
(continued)

RACE AND SEX OF FULL-TIME FACULTY BY
DEPARTMENT AND ACADEMIC RANK
FALL, 1984

DEPARTMENT AND ACADEMIC RANK	BLACK		WHITE		OTHER		TOTAL
	MEN	WOMEN	MEN	WOMEN	MEN	WOMEN	
<u>HISTORY/SOCIAL SCIENCES</u>							
Professor	3						3
Associate Professor	1	1		1			3
Assistant Professor	3	1					4
Instructor							
Lecturer							
Adjunct or Visiting							
Total	7	2		1			10
<u>HOME ECONOMICS</u>							
Professor							
Associate Professor	1	1					2
Assistant Professor	1	3					4
Instructor							
Lecturer							
Adjunct or Visiting				1			1
Total	2	4		1			7
<u>LAW</u>							
Professor	2		2	3			7
Associate Professor	1			1			2
Assistant Professor	1	2	1				4
Instructor							
Lecturer							
Adjunct or Visiting							
Total	4	2	3	4			13
<u>LIBRARY SCIENCE</u>							
Professor	1		1				2
Associate Professor		1	1				2
Assistant Professor		4					4
Instructor							
Lecturer			1				1
Adjunct or Visiting							
Total	1	5	3				9
<u>MATHEMATICS</u>							
Professor	1						1
Associate Professor	1	1	3				5
Assistant Professor	2		1				3
Instructor		1					1
Lecturer		1					1
Adjunct or Visiting		1					1
Total	4	4	4				12

TABLE 31

RACE AND SEX OF FULL-TIME FACULTY BY
DEPARTMENT AND ACADEMIC RANK
FALL, 1984

DEPARTMENT AND ACADEMIC RANK	BLACK		WHITE		OTHER		TOTAL
	MAN	WOMEN	MEN	WOMEN	MEN	WOMEN	
<u>ART</u>							
Professor							
Associate Professor	1	1	1	1			4
Assistant Professor	1						1
Instructor							
Lecturer							
Adjunct or Visiting							
Total	2	1	1	1			5
<u>BIOLOGY</u>							
Professor	2			1			3
Associate Professor	3	1	1		1		6
Assistant Professor	1	1					2
Instructor							
Lecturer							
Adjunct or Visiting	1	1		1			3
Total	7	3		2	1		13
<u>BUSINESS</u>							
Professor		1	1		1		3
Associate Professor	3	1	6				10
Assistant Professor	8	2	2		3		15
Instructor	1	1					2
Lecturer			1				1
Adjunct or Visiting	1						1
Total	13	5	10		4		32
<u>CENTER FOR ACADEMIC ENRICHMENT</u>							
Professor							
Associate Professor			1				1
Assistant Professor							
Instructor	1	7				1	9
Lecturer							
Adjunct or Visiting		2					2
Total	1	9	1			1	12
<u>CHEMISTRY</u>							
Professor	1		2				3
Associate Professor	1				1		2
Assistant Professor	1						1
Instructor							
Lecturer							
Adjunct or Visiting							
Total	3		2		1		6

TABLE 31
(continued)

RACE AND SEX OF FULL-TIME FACULTY BY
DEPARTMENT AND ACADEMIC RANK
FALL, 1984

DEPARTMENT AND ACADEMIC RANK	BLACK		WHITE		OTHER		TOTAL
	MEN	WOMEN	MEN	WOMEN	MEN	WOMEN	
<u>HISTORY/SOCIAL SCIENCES</u>							
Professor	3						3
Associate Professor	1	1		1			3
Assistant Professor	3	1					4
Instructor							
Lecturer							
Adjunct or Visiting							
Total	7	2		1			10
<u>HOME ECONOMICS</u>							
Professor							
Associate Professor	1	1					2
Assistant Professor	1	3					4
Instructor							
Lecturer							
Adjunct or Visiting				1			1
Total	2	4		1			7
<u>LAW</u>							
Professor	2		2	3			7
Associate Professor	1			1			2
Assistant Professor	1	2	1				4
Instructor							
Lecturer							
Adjunct or Visiting							
Total	4	2	3	4			13
<u>LIBRARY SCIENCE</u>							
Professor	1		1				2
Associate Professor		1	1				2
Assistant Professor		4					4
Instructor							
Lecturer			1				1
Adjunct or Visiting							
Total	1	5	3				9
<u>MATHEMATICS</u>							
Professor	1						1
Associate Professor	1	1	3				5
Assistant Professor	2		1				3
Instructor		1					1
Lecturer		1					1
Adjunct or Visiting		1					1
Total	4	4	4				12

TABLE 31
(continued)

RACE AND SEX OF FULL-TIME FACULTY BY
DEPARTMENT AND ACADEMIC RANK
FALL, 1984

DEPARTMENT AND ACADEMIC RANK	BLACK		WHITE		OTHER		TOTAL
	MEN	WOMEN	MEN	WOMEN	MEN	WOMEN	
<u>MODERN FOREIGN LANGUAGE</u>							
Professor	1						1
Associate Professor	1		2		1	1	5
Assistant Professor	1		1	3			5
Instructor							
Lecturer							
Adjunct or Visiting							
Total	3		3	3	1	1	11
<u>MUSIC</u>							
Professor	1			1			2
Associate Professor		1	1	1			3
Assistant Professor	3	1	1				5
Instructor		1					1
Lecturer							
Adjunct or Visiting							
Total	4	3	2	2			11
<u>NURSING</u>							
Professor							
Associate Professor		2					2
Assistant Professor		5		5			10
Instructor				1			1
Lecturer							
Adjunct or Visiting							
Total		7		6			13
<u>PHILOSOPHY</u>							
Professor							
Associate Professor			1				1
Assistant Professor			1				1
Instructor							
Lecturer							
Adjunct or Visiting							
Total			2				2
<u>PHYSICAL EDUCATION</u>							
Professor	1						1
Associate Professor	2			1			3
Assistant Professor	5	3					8
Instructor	1						1
Lecturer							
Adjunct or Visiting		1					1
Total	9	4		1			14

TABLE 31
(continued)

RACE AND SEX OF FULL-TIME FACULTY BY
DEPARTMENT AND ACADEMIC RANK
FALL, 1984

DEPARTMENT AND ACADEMIC RANK	BLACK		WHITE		OTHER		TOTAL
	MEN	WOMEN	MEN	WOMEN	MEN	WOMEN	
<u>PHYSICS</u>							
Professor			3		1		4
Associate Professor					1		1
Assistant Professor							
Instructor							
Lecturer							
Adjunct or Visiting							
Total			3		2		5
<u>POLITICAL SCIENCE</u>							
Professor			1				1
Associate Professor	2		3		1		6
Assistant Professor	1		1	1			3
Instructor							
Lecturer							
Adjunct or Visiting				1			1
Total	3		5	2	1		11
<u>PSYCHOLOGY</u>							
Professor	1						1
Associate Professor	1		2				3
Assistant Professor		1					1
Instructor	1						1
Lecturer							
Adjunct or Visiting							
Total	3	1	2				6
<u>SOCIOLOGY</u>							
Professor	1		1				2
Associate Professor	1		1				2
Assistant Professor		1	1				2
Instructor							
Lecturer							
Adjunct or Visiting		1					1
Total	2	2	3				7

TABLE 31
(continued)

RACE AND SEX OF FULL-TIME FACULTY BY
DEPARTMENT AND ACADEMIC RANK
FALL, 1984

DEPARTMENT AND ACADEMIC RANK	BLACK		WHITE		OTHER		TOTAL
	MEN	WOMEN	MEN	WOMEN	MEN	WOMEN	
<u>MODERN FOREIGN LANGUAGE</u>							
Professor	1						1
Associate Professor	1		2		1	1	5
Assistant Professor	1		1	3			5
Instructor							
Lecturer							
Adjunct or Visiting							
Total	3		3	3	1	1	11
<u>MUSIC</u>							
Professor	1			1			2
Associate Professor		1	1	1			3
Assistant Professor	3	1	1				5
Instructor		1					1
Lecturer							
Adjunct or Visiting							
Total	4	3	2	2			11
<u>NURSING</u>							
Professor							
Associate Professor		2					2
Assistant Professor		5		5			10
Instructor				1			1
Lecturer							
Adjunct or Visiting							
Total		7		6			13
<u>PHILOSOPHY</u>							
Professor							
Associate Professor			1				1
Assistant Professor			1				1
Instructor							
Lecturer							
Adjunct or Visiting							
Total			2				2
<u>PHYSICAL EDUCATION</u>							
Professor	1						1
Associate Professor	2			1			3
Assistant Professor	5	3					8
Instructor	1						1
Lecturer							
Adjunct or Visiting		1					1
Total	9	4		1			14

TABLE 31
(continued)

RACE AND SEX OF FULL-TIME FACULTY BY
DEPARTMENT AND ACADEMIC RANK
FALL, 1984

DEPARTMENT AND ACADEMIC RANK	BLACK		WHITE		OTHER		TOTAL
	MEN	WOMEN	MEN	WOMEN	MEN	WOMEN	
<u>PHYSICS</u>							
Professor			3		1		4
Associate Professor					1		1
Assistant Professor							
Instructor							
Lecturer							
Adjunct or Visiting					2		2
Total			3		2		5
<u>POLITICAL SCIENCE</u>							
Professor			1				1
Associate Professor	2		3		1		6
Assistant Professor	1		1	1			3
Instructor							
Lecturer							
Adjunct or Visiting				1			1
Total	3		5	2	1		11
<u>PSYCHOLOGY</u>							
Professor	1						1
Associate Professor	1		2				3
Assistant Professor		1					1
Instructor	1						1
Lecturer							
Adjunct or Visiting							
Total	3	1	2				6
<u>SOCIOLOGY</u>							
Professor	1		1				2
Associate Professor	1		1				2
Assistant Professor		1	1				2
Instructor							
Lecturer							
Adjunct or Visiting		1					1
Total	2	2	3				7

TABLE 32

SUMMARY OF RACE AND SEX BY
ACADEMIC RANK FOR FULL-TIME FACULTY
FALL, 1984

ACADEMIC RANK	BLACK				WHITE				OTHER				TOTAL			
	MALE		FEMALE		MALE		FEMALE		MALE		FEMALE		MALE		FEMALE	
	N	%	N	%	N	%	N	%	N	%	N	%	N	%	N	%
Professor	20	40.8	3	6.1	15	30.6	8	16.3	3	6.1			38	77.5	11	22.4
Associate Professor	26	31.0	15	17.8	25	29.7	13	15.4	4	4.7	1	1.1	55	65.4	29	34.5
Assistant Professor	31	35.2	31	35.2	11	12.5	10	11.3	3	3.4	2	2.2	45	51.1	43	48.8
Instructor	4	21.0	12	63.1	1	5.2	1	5.2			1	5.2	5	26.0	14	73.6
Lecturer			1	25.0	2	50.0			1	25.0			3	75.0	1	25.0
Adjunct or Visiting	2	14.2	6	42.8			5	35.7	1	7.1			3	21.4	11	78.5
GRAND TOTALS	83	32.1	68	26.3	54	21.0	37	14.3	12	4.6	4	1.5	149	57.8	109	42.2

TABLE 33

MEAN SALARIES BY RANK*
1968 - 1984

<u>YEAR</u>	<u>PROFESSOR</u>	<u>ASSOCIATE PROFESSOR</u>	<u>ASSISTANT PROFESSOR</u>	<u>INSTRUCTOR</u>
1968	\$13,221	\$11,208	\$8,972	\$7,474
1969	14,326	12,119	9,595	8,045
1970	15,952	13,326	10,222	8,045
1971	16,663	13,837	10,878	9,078
1972	17,588	14,321	11,248	9,698
1973	18,306	14,842	11,855	9,734
1974	19,353	16,150	13,012	10,950
1975	19,187	15,600	12,937	10,922
1976	20,777	17,069	14,073	11,928
1977	22,641	18,222	15,057	12,790
1978	24,874	19,492	16,240	13,921
1979	26,956	20,656	17,305	14,199
1980	29,735	23,027	19,337	15,415
1981	30,514	24,411	20,718	17,825
1982	31,558	25,491	22,123	18,545
1983	34,236	26,671	23,442	19,455
1984	36,350	29,319	26,456	21,847

* Salary data adjusted to nine-month salary scales for full-time instructional faculty .

TABLE 34

MEAN SALARIES OF PROFESSORS*
BY RACE AND SEX, 1974 - 1984

YEAR	BLACK		WHITE		OTHER	
	MEN	WOMEN	MEN	WOMEN	MEN	WOMEN
1974	\$20,235	\$19,093	\$19,054	\$16,925	\$18,025	
1975	20,037	19,421	18,754	17,617	18,250	
1976	21,788	20,953	20,140	19,160	19,475	
1977	23,381	22,418	22,842	21,388	20,531	
1978	25,330	25,267	24,229	23,534	25,916	
1979	28,052	27,011	26,521	25,321	25,508	
1980	30,879	31,545	28,834	28,059	29,539	
1981	32,066	31,019	30,257	27,988	29,287	
1982	32,505	32,370	31,742	29,387	30,961	
1983	36,163	33,975	33,737	32,367	31,620	
1984	36,533	35,147	37,284	35,775	36,205	

TABLE 35

MEAN SALARIES OF ASSOCIATE PROFESSORS*
BY RACE AND SEX, 1974 - 1984

YEAR	BLACK		WHITE		OTHER	
	MEN	WOMEN	MEN	WOMEN	MEN	WOMEN
1974	\$16,875	\$16,261	\$16,366	\$14,791	\$16,900	\$14,700
1975	16,053	16,567	15,620	14,923	16,800	14,700
1976	17,322	17,137	17,615	15,949	17,922	16,188
1977	18,528	17,974	18,748	17,314	17,918	17,240
1978	19,726	19,185	20,357	18,358	19,164	18,674
1979	21,128	20,545	21,598	19,100	19,409	20,208
1980	24,039	21,832	23,667	22,157	19,856	23,229
1981	25,272	23,420	24,877	23,439	23,528	
1982	26,318	24,855	26,035	24,773	22,228	24,810
1983	27,762	26,746	26,843	24,517	25,583	25,705
1984	30,485	29,796	29,458	27,096	26,570	28,275

* Salary data adjusted to nine-month salary scales for full-time instructional faculty .

TABLE 36

MEAN SALARIES OF ASSISTANT PROFESSORS*
BY RACE AND SEX, 1974 - 1984

YEAR	BLACK		WHITE		OTHER	
	MEN	WOMEN	MEN	WOMEN	MEN	WOMEN
1974	\$13,706	\$12,822	\$12,454	\$11,931		
1975	13,489	12,952	12,420	11,694		
1976	14,708	13,559	13,717	11,871	16,000	
1977	15,624	14,823	14,589	14,462	17,040	
1978	16,524	16,016	16,329	15,732	17,000	
1979	17,488	17,187	17,336	16,722	17,900	
1980	19,999	19,379	18,940	17,455	18,480	
1081	21,383	20,456	20,142	19,820		
1982	22,546	21,874	22,489	21,133	21,924	24,045
1983	23,704	23,398	23,580	22,400	25,758	21,986
1984	26,813	26,098	26,608	24,292	32,390	27,548

TABLE 37

MEAN SALARIES OF INSTRUCTORS*
BY RACE AND SEX, 1974 - 1984

YEAR	BLACK		WHITE		OTHER	
	MEN	WOMEN	MEN	WOMEN	MEN	WOMEN
1974	\$11,394	\$11,005	\$9,600	\$9,800		
1975	11,132	10,935	10,260	11,450		
1976	12,467	11,983	10,910	12,208		10,781
1977	12,782	12,843	12,972	11,751		13,308
1978	14,708	13,753	14,064	13,117	16,000	13,308
1979	14,674	13,992	15,883	14,020		11,550
1980	12,694	15,844	16,188	16,408		13,705
1981	17,115	17,664	20,221	19,101		
1982	17,821	18,662	17,236	19,941		15,860
1983	17,364	19,736	19,560	20,125		17,010
1984	20,541	22,659	20,252	22,063		18,711

* Salary data adjusted to nine-month salary scales for full-time instructional faculty .

TABLE 38

SUMMARY OF MEAN SALARIES* BY RANK,
RACE, AND SEX, FALL 1984

ACADEMIC RANK	N	BLACK		WHITE		OTHER		N	WOMEN MEAN			
		MEN MEAN	N	WOMEN MEAN	N	MEN MEAN	N					
PROFESSOR	20	\$38,533	3	\$35,147	15	\$37,284	8	\$35,775	3	\$36,205		
ASSOCIATE PROFESSOR	26	30,485	15	29,796	25	29,458	13	27,096	3	26,570	1	
ASSISTANT PROFESSOR	31	26,813	31	26,098	11	26,608	10	24,292	3	32,390	2	27,548
INSTRUCTOR	4	20,541	12	22,659	1		1				1	
LECTURER			1		2	29,375			1			
ADJUNCT OR VISITING	2	25,178	6	19,985			5	22,888	1		1	

* Salary data adjusted to nine-month salary scales for full-time instructional faculty .

TABLE 39

FULL-TIME EPA AND SPA BY OCCUPATIONAL
ACTIVITY CATEGORY, RACE, AND SEX
FALL, 1984

OCCUPATIONAL ACTIVITY CATEGORY	BLACK		WHITE		OTHER		TOTAL	
	MEN	WOMEN	MEN	WOMEN	MEN	WOMEN	MEN	WOMEN
EXECUTIVE, ADMINISTRATIVE & MANAGERIAL	23	5	2	3	1		26	8
NUMBER OF PERSONS ABOVE WITH ACADEMIC RANK	13	3	2	3	1		16	6
NUMBER OF PERSONS ABOVE WITH TENURE	10	2	1	1	1		12	3
INSTRUCTIONAL FACULTY (TENURED)	54	30	36	19	4	1	94	50
PROFESSORS	19	3	15	8	3		37	11
ASSOCIATE PROFESSORS	14	13	16	8	1	1	31	22
ASSISTANT PROFESSORS	19	9	5	3			24	12
INSTRUCTORS	2	5					2	5
LECTURERS								
INSTRUCTIONAL FACULTY (NOT TENURED BUT ON TRACK)	24	24	13	10	6	2	43	36
PROFESSORS	1						1	
ASSOCIATE PROFESSORS	12	2	8	5	3		23	7
ASSISTANT PROFESSORS	11	22	5	5	3	2	19	29
INSTRUCTORS								
LECTURERS								
INSTRUCTIONAL FACULTY (NOT ON TENURE TRACK)	4	5	4	8	2	1	10	14
PROFESSORS								
ASSOCIATE PROFESSORS								
ASSISTANT PROFESSORS	1		1	2	1		2	2
INSTRUCTORS	1		1	1			2	1
LECTURERS		1	2		1		3	1
ADJUNCT FACULTY	2	4		5		1	3	9
PROFESSIONAL	31	34	4	2	1	2	36	38
SECRETARIAL AND CLERICAL	13	178	1	1	1	1	15	180
TECHNICAL & PARAPROFESSIONAL	27	27	1	1			28	28
SKILLED CRAFTS	32	4	4				36	4
SERVICE & MAINTENANCE	83	37	1	1			84	38
TOTAL	291	344	66	45	15	7	372	396

TABLE 40

NEW FULL-TIME EMPLOYEES BY RACE AND SEX
FALL, 1984

OCCUPATIONAL ACTIVITY CATEGORY	BLACK		WHITE		OTHER		TOTAL	
	MEN	WOMEN	MEN	WOMEN	MEN	WOMEN	MEN	WOMEN
EXECUTIVE, ADMINISTRATIVE & MANAGERIAL	2	1					2	1
NUMBER OF PERSONS ABOVE WITH ACADEMIC RANK								
NUMBER OF PERSONS ABOVE WITH TENURE								
INSTRUCTIONAL FACULTY (TENURED)								
PROFESSORS								
ASSOCIATE PROFESSORS								
ASSISTANT PROFESSORS								
INSTRUCTORS								
LECTURERS								
INSTRUCTIONAL FACULTY (NON-TENURED BUT ON TRACK)	8	2	2	2	1	1	11	5
PROFESSORS	1						1	
ASSOCIATE PROFESSORS	5	1	1	1			6	2
ASSISTANT PROFESSORS	2	1	1	1	1	1	4	3
INSTRUCTORS								
LECTURERS								
INSTRUCTIONAL FACULTY (NOT ON TENURE TRACK)	2	2	3	3			5	5
PROFESSORS								
ASSOCIATE PROFESSORS								
ASSISTANT PROFESSORS			1				1	
INSTRUCTORS	1						1	
LECTURERS		1	2				2	1
ADJUNCT FACULTY	1	1		3			1	4
PROFESSIONAL	3	7		1			3	8
SECRETARIAL & CLERICAL		16	1	1		1	1	18
TECHNICAL & PARAPROFESSIONAL	3	2					3	2
SKILLED CRAFTS	4		1				5	
SERVICE & MAINTENANANCE	11	6	1				12	6
TOTAL	33	36	8	7	1	2	42	45

TABLE 41

RETIREMENTS, RESIGNATIONS AND DISMISSALS
OF FULL-TIME EMPLOYEES
FALL, 1984

OCCUPATIONAL ACTIVITY CATEGORY	BLACK		WHITE		OTHER		TOTAL	
	MEN	WOMEN	MEN	WOMEN	MEN	WOMEN	MEN	WOMEN
EXECUTIVE, ADMINISTRATIVE & MANAGERIAL	3						3	
NUMBER OF PERSONS ABOVE WITH ACADEMIC RANK	1						1	
NUMBER OF PERSONS ABOVE WITH TENURE	1						1	
INSTRUCTIONAL FACULTY (TENURED)	2	1	2	2			4	3
PROFESSORS	1		2	1			3	1
ASSOCIATE PROFESSORS	1	1		1			1	2
ASSISTANT PROFESSORS								
INSTRUCTORS								
LECTURERS								
INSTRUCTIONAL FACULTY (NON-TENURED BUT ON TRACK)	3	1		1	1	1	4	3
PROFESSORS								
ASSOCIATE PROFESSORS					1		1	
ASSISTANT PROFESSORS	3	1		1		1	3	3
INSTRUCTORS								
LECTURERS								
INSTRUCTIONAL FACULTY (NOT ON TENURE TRACK)	3	4	1		1		5	4
PROFESSORS								
ASSOCIATE PROFESSORS								
ASSISTANT PROFESSORS			1		1		2	
INSTRUCTORS		2						2
LECTURERS								
ADJUNCT FACULTY	3	2					3	2
PROFESSIONAL	1	4	1			2	2	6
SECRETARIAL & CLERICAL	3	42				1	3	43
TECHNICAL & PARAPROFESSIONAL	2	8					2	8
SKILLED CRAFTS	6						6	
SERVICE & MAINTENANCE	19	14	1				20	14
TOTAL	42	74	5	3	2	4	49	81

TABLE 42

PROMOTIONS OF FULL-TIME EMPLOYEES
FALL, 1984

OCCUPATIONAL ACTIVITY CATEGORY	BLACK		WHITE		OTHER		TOTAL	
	MEN	WOMEN	MEN	WOMEN	MEN	WOMEN	MEN	WOMEN
EXECUTIVE, ADMINISTRATIVE & MANAGERIAL								
NUMBER OF PERSONS ABOVE WITH ACADEMIC RANK			1	1			1	1
NUMBER OF PERSONS ABOVE WITH TENURE				1				1
INSTRUCTIONAL FACULTY (TENURED)								
PROFESSORS	3	1	2	1			5	2
ASSOCIATE PROFESSORS	3	1	2	1			5	2
ASSISTANT PROFESSORS								
INSTRUCTORS								
LECTURERS								
INSTRUCTIONAL FACULTY (NON-TENURED BUT ON TRACK)								
PROFESSORS		1	1	1			1	2
ASSOCIATE PROFESSORS		1	1	1			1	2
ASSISTANT PROFESSORS								
INSTRUCTORS								
LECTURERS								
INSTRUCTIONAL FACULTY (NOT ON TENURE TRACK)								
PROFESSORS								
ASSOCIATE PROFESSORS								
ASSISTANT PROFESSORS								
INSTRUCTORS								
LECTURERS								
PROFESSIONAL		1						1
SECRETARIAL & CLERICAL	1	13					1	13
TECHNICAL & PARAPROFESSIONAL		2						2
SKILLED CRAFTS								
SERVICE & MAINTENANCE	1	1		1			1	2
TOTAL	5	19	4	4			9	23

TABLE 43

MEAN SALARY* BY OCCUPATIONAL ACTIVITY CATEGORY,
RACE AND SEX
FALL, 1984

OCCUPATIONAL ACTIVITY CATEGORY	BLACK				WHITE				OTHER			
	<u>N</u>	MEAN	<u>N</u>	MEAN	<u>N</u>	MEAN	<u>N</u>	MEAN	<u>N</u>	MEAN	<u>N</u>	MEAN
EXECUTIVE, ADMINISTRATIVE & MANAGERIAL	27	\$43,037	8	\$34,762	3	\$33,166	3	\$44,458	1	*		
PROFESSIONAL	19	25,723	46	23,094	4	25,351	2	21,854	1	*	2	22,236
TECHNICAL & PARAPROFESSIONAL	27	15,902	27	15,566	1	*	1	*				
SECRETARIAL & CLERICAL	13	13,397	178	14,991	1	*	1	*	1	*	1	*
SKILLED CRAFTS	32	209,039	4	15,783	4	16,746						
SERVICE & MAINTENANCE	83	11,480	37	15,243	1	*	1	*				

*Salaries have been omitted from cells with only one person.
Instructional faculty are excluded.

TABLE 44
MEAN SALARY OF SELECTED POSITIONS
FALL, 1984

<u>OCCUPATIONAL ACTIVITY CATEGORY</u>	<u>NUMBER</u>	<u>MEAN SALARY</u>
EXECUTIVE OFFICERS	8	\$51,459
DEANS	5	54,135
ASSISTANT DEANS	5	39,026
DIRECTORS	20	35,337
CHAIRPERSONS	21	38,356

APPENDIX

The data used in this book were abstracted from annual North Carolina Higher Education Data Survey forms (NCHED), the Department of Education Higher Education General Information Survey forms (HEGIS), and the Office for Civil Rights (OCR) reports. The sources of basic data for each section are listed below.

ENROLLMENT

NCHED A-1.1	Resident Credit Enrollment, Fall 1984
HEGIS 2300-2.3	Fall Enrollment and Compliance Report of Institutions of Higher Education, 1984
NCHED A-1.6	Survey of Enrollment by Age, Fall 1984
NCHED A-1.3	"Home Base" of Students, Fall 1984
	<u>FACTS</u> , 1983-1984
	Separate Analyses done by the Office of Institutional Studies

ADMISSIONS

OCR B1	Students in Institutions of Higher Education - Applications, Acceptances and Actual Enrollment, Fall 1984
NCHED A-4	First Time Freshmen Admissions, Fall 1984
NCHED A-1.2	New Undergraduate Transfer Students, Fall 1984
NCHED A-7	Student Retention Data Survey, Fall 1984
	<u>FACTS</u> , 1983-1984
	Separate Analyses done by the Office of Institutional Studies

DEGREES CONFERRED

HEGIS 2300-2.1	Degrees and Other Formal Awards Conferred, 1984
	NTE Yearly Reports to the Education Department, 1984

Appendix (Continued)

FACTS, 1983-1984

Separate Analyses done by the Office of Institutional Studies

FINANCIAL AID

NCHED A-10

Student Financial Aid Summary, Fall 1984

OCR B3

Financial Assistance to Students in Institutions of Higher Education, Fall 1984

FACTS, 1983-1984

ALL INSTRUCTIONAL FACULTY

HEGIS 2300-3

Salaries, Tenure and Frings Benefits of Full-Time Instructional Faculty, 1984

FACTS, 1983-1984

Separate Analyses done by the Office of Institutional Studies

FULL-TIME INSTRUCTIONAL FACULTY

HEGIS 2300-3

Salaries, Tenure and Fringe Benefits of Full-Time Instructional Faculty, 1984

FACTS, 1983-1984

Separate Analyses done by the Office of Institutional Studies

FACULTY AND STAFF

OCR A1A

Employees in Institutions of Higher Education, Fall 1984

OCR A1B

New Employees in Institutions of Higher Education, Fall 1984

OCR A3

Retirements, Resignations and Dismissals of Employees in Institutions of Higher Education, Fall 1984

OCR A4

Promotions of Employees in Institutions of Higher Education, Fall 1984

FACTS, 1983-1984

Separate Analyses done by the Office of Institutional Studies

Appendix (continued)

UNIVERSITY RESOURCES

- NCHED A-11 Report on Sources and Uses of University Current and Plant Funds, Fiscal Year 1983-1984
- HEGIS 2300-4 Financial Statistics of Institutions of Higher Education for Fiscal Year Ending 1984
- NCHED A-6 College and University Libraries, Fall 1984
- North Carolina Facilities Inventory and Utilization Reports - 1984. Prepared by the Office of Institutional Studies
- FACTS, 1983-1984

Appendix (Continued)

FACTS, 1983-1984

Separate Analyses done by the Office of Institutional Studies

FINANCIAL AID

NCHED A-10

Student Financial Aid Summary, Fall 1984

OCR B3

Financial Assistance to Students in Institutions of Higher Education, Fall 1984

FACTS, 1983-1984

ALL INSTRUCTIONAL FACULTY

HEGIS 2300-3

Salaries, Tenure and Frings Benefits of Full-Time Instructional Faculty, 1984

FACTS, 1983-1984

Separate Analyses done by the Office of Institutional Studies

FULL-TIME INSTRUCTIONAL FACULTY

HEGIS 2300-3

Salaries, Tenure and Fringe Benefits of Full-Time Instructional Faculty, 1984

FACTS, 1983-1984

Separate Analyses done by the Office of Institutional Studies

FACULTY AND STAFF

OCR A1A

Employees in Institutions of Higher Education, Fall 1984

OCR A1B

New Employees in Institutions of Higher Education, Fall 1984

OCR A3

Retirements, Resignations and Dismissals of Employees in Institutions of Higher Education, Fall 1984

OCR A4

Promotions of Employees in Institutions of Higher Education, Fall 1984

FACTS, 1983-1984

Separate Analyses done by the Office of Institutional Studies

Appendix (continued)

UNIVERSITY RESOURCES

NCHED A-11

Report on Sources and Uses of University
Current and Plant Funds, Fiscal Year
1983-1984

HEGIS 2300-4

Financial Statistics of Institutions of
Higher Education for Fiscal Year Ending
1984

NCHED A-6

College and University Libraries, Fall 1984

North Carolina Facilities Inventory and
Utilization Reports - 1984. Prepared by
the Office of Institutional Studies

FACTS, 1983-1984