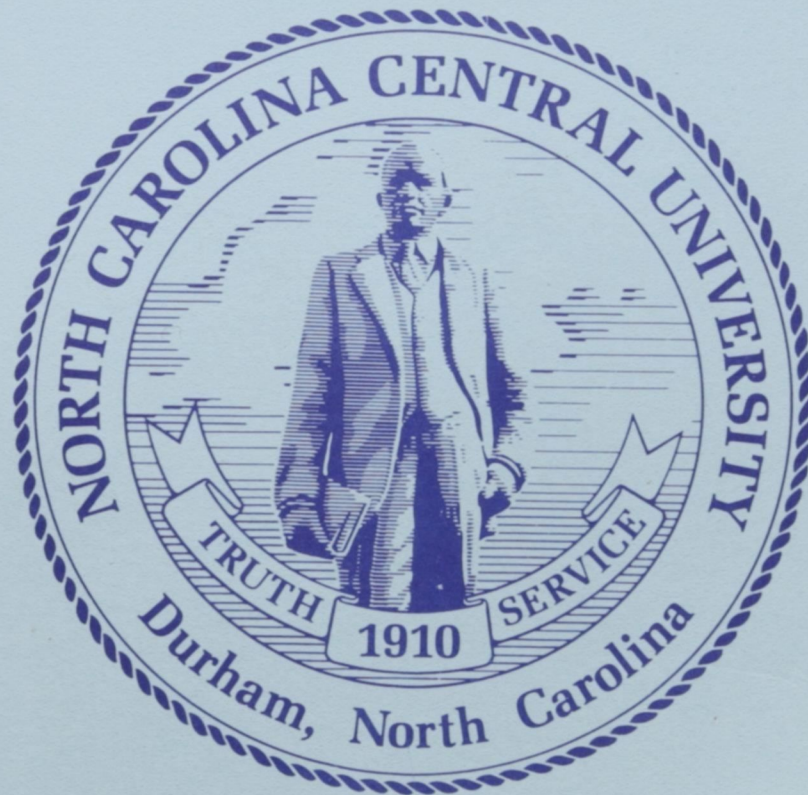


FACTS

1996 - 1997



James E. Shepard, Founder

NORTH CAROLINA CENTRAL UNIVERSITY

OFFICE OF
RESEARCH, EVALUATION AND PLANNING
DURHAM, NORTH CAROLINA

F A C T S

1996 - 1997

by

Sandra E. Davis

Helen L. Faucette

Margaret W. Harrison

Senior Advisors:

Fitzpatrick U. Anyanwu

Karin A. Beckett

Sandra E. Davis

Lawrence A. Lee

Office of Research, Evaluation and Planning

May 1997

F A C T S

1996 - 1997

by

Sandra E. Davis
Helen L. Faucette
Margaret W. Harrison

Senior Advisors:

Fitzpatrick U. Anyanwu
Karin A. Beckett
Sandra E. Davis
Lawrence A. Lee

Office of Research, Evaluation and Planning
May 1997

Credit Hours Generated	
Undergraduate - Percentage Distribution	36
Graduate - Percentage Distribution	37
Grades Assigned by School	
Percentage Distribution by Course Level	38
School Profiles	
College of Arts & Sciences	39
Business	40
Education	41
Law	42
Library and Information Sciences.	43
Persistence	
Students Enrolled, Graduated, Suspended, and Not Enrolled, One Year After Initial Entry-- Percentage Distribution	44
A Comparison of First-Time Freshmen Enrolled at NCCU, Predominantly Black Institutions (PBI), and in the UNC System	45
Graduation Percentages for First-Time Freshmen at NCCU, Predominantly Black Institutions (PBI), and in the UNC System	46

Facts About Students

Admissions

Applicants, Acceptances, and Enrollees	
Freshmen & Transfers.	51
Graduate & First-Professional	52
Geographic Origin of First-Time Freshmen	
By North Carolina County	53
By State	53
Distribution of SAT Scores of First-Time Freshmen	
Verbal Scores	54
Math Scores	55
ACT Scores	56
High School Class Rank of Entering Freshmen	57
Undergraduate Transfers	58

Enrollment

General Characteristics of Students

Classification, Full-Time/Part-Time Status, & Sex	61
Classification, Race & Sex	62
Distribution by Sex - Historical Comparison	63
Distribution by Race, 1989 - 1996	64

Geographic Origin

By Region, 1989 - 1996	65
By North Carolina County	66
By State	66

Age Characteristics

Average Age, 1986 - 1996	67
Undergraduate Distribution	68
Graduate & First Professional Distribution	68

Academic Departments and Programs

Undergraduate Enrollment by Field of Study	69
Undergraduate Enrollment by Field of Study and Race	71
Graduate Enrollment by Field of Study	73
Graduate Enrollment by Field of Study and Race	75

Facts About Faculty and Staff

General Characteristics of Faculty

Instructional Staffing Patterns by Academic Unit and Rank for Full and Part-Time Faculty	79
Highest Earned Degree for Full-Time Faculty by Academic Unit	82
Summary of Highest Earned Degree for Full-Time Faculty	83
Race and Sex of Full-Time Faculty	84
Summary of Race and Sex by Academic Rank	88

Tenure Status of Faculty

By Academic Unit	89
By Rank and Sex	90

Faculty Salaries

Mean Salaries of Full-Time Instructional Faculty by Rank	91
Mean Salaries by Rank, Race, & Sex	92
Comparison of Faculty Salaries by Rank for NCCU and Comparable Public Universities	93
Mean Salaries by Occupational Activity Category, Race & Sex	94

EPA & SPA Employees (Full-Time)

Totals by Occupational Activity Category, Race, & Sex	95
New Employees	96
Retirements, Resignations, & Dismissals	97
Promotions	98

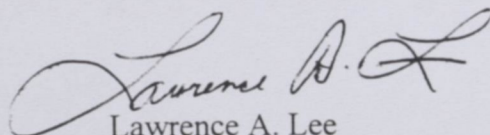
Preface

A goal of the Office of Research, Evaluation, and Planning is to provide useful information and knowledge to the students, faculty, and staff of the university and to the citizens of North Carolina and the nation. **FACTS, 1996-97** is a collection of current and historical information and data on North Carolina Central University.

The staff of the Office have committed a very significant effort in the development of this important resource. Helen Faucette and Sandra Davis, in particular, have contributed many long hours of research, revising and updating tables and graphs, and proofreading. I extend my appreciation to them and the entire staff of the Office of Research, Evaluation, and Planning for the successful completion of this year's edition of FACTS.

We hope you find FACTS useful. We welcome your suggestions for improving the book.

Sincerely,



Lawrence A. Lee

Interim Associate Vice Chancellor for
Research, Evaluation, and Planning

Facts About the University

STATEMENT OF PURPOSE

History and Background

North Carolina Central University, a state-supported liberal arts institution, was chartered in 1909 as a private institution and opened to students on July 10, 1910. It was founded by Dr. James E. Shepard. From the beginning, when it was known as the National Religious Training School and Chautauqua, its purpose has been the development in young men and women of the character and sound academic training requisite for real service to the nation. To this end, the training of all students has been entrusted to the most capable teachers available.

The institution's early years were characterized by a wealth of enthusiasm and high endeavor, but not of money. Private donations and student fees constituted the total financial support of the school, and the heavy burden of collecting funds rested on the President.

In 1915, the school was sold and reorganized, then becoming the National Training School. During this period of its history, Mrs. Russell Sage of New York was a generous benefactor of the school.

In 1923, the General Assembly of North Carolina appropriated funds for the purchase and maintenance of the school; thus, in that year it became a publicly-supported institution and was renamed Durham State Normal School. Two years later, the General Assembly converted it into the North Carolina College for Negroes, dedicating it to the offering of liberal arts education and the preparation of teachers and principals of secondary schools.

At its 1927 session, the General Assembly began a program of expansion of the college plant to conform to the needs of an enlarged academic program. The interest of the honorable Angus W. McLean, then Governor of

North Carolina, and his belief in the institution aided greatly in the promotion of this program. State appropriations were supplemented by a generous gift from B. N. Duke and by contributions from citizens of Durham in 1929. The 1930's afforded federal grants and State appropriations for a new program of physical expansion and improvement of educational facilities; this program continued until the beginning of World War II.

The College was accredited by the Southern Association of Colleges and Secondary Schools as an "A" class institution in 1937 and was admitted to membership in this association in 1957.

The General Assembly of 1939 authorized the establishment of graduate work in liberal arts and the professions. Pursuant thereto, graduate courses in the Arts and Sciences were first offered in that same year; the School of Law began operation in 1940, and the School of Library Science was established in 1941.

In 1947, the General Assembly changed the name of the institution to North Carolina College at Durham.

On October 6, 1947, Dr. Shepard, the founder and President of the college, died. The Board of Trustees appointed an interim committee consisting of Dr. Albert E. Manley, Dean of the College of Arts and Sciences; Miss Ruth G. Rush, Dean of Women; and Dr. Albert L. Turner, Dean of the School of Law, to administer the affairs of the institution until the election of the second president.

On January 20, 1948, Dr. Alfonso Elder was elected President of the institution. At the time of his election, Dr. Elder was serving as head of the Graduate Department of Education and had formerly been Dean of the College of Arts and Sciences. Dr. Elder retired September 1, 1963.

Dr. Samuel P. Massie was elected as the third President of the college on August 9, 1963. Dr. Massie came to the institution from Washington, D.C., where he was Associate Program Director for Undergraduate Science Education of The National Science Foundation and Professor and Chairman of the Department of Pharmaceutical Chemistry at Howard University. He resigned on February 1, 1966.

The Board of Trustees appointed an interim committee consisting of Mr. William Jones, Business Manager; Dr. Helen G. Edmonds, Graduate Dean; and Dr. William H. Brown, Professor of Education, to administer the affairs of the institution until the fourth president took office.

On July 20, 1966, Dr. Albert N. Whiting was named the fourth president of the institution. He came to North Carolina College from Baltimore, Maryland, where he had been Dean of the Faculty of Morgan State College. Dr. Whiting served as President and Chancellor from July 1, 1967, until his retirement on June 30, 1983.

In 1969, the General Assembly changed the name of the institution to North Carolina Central University. On July 1, 1972, North Carolina Central University became a constituent institution of The University of North Carolina.

On July 1, 1983, Dr. LeRoy T. Walker became Interim Chancellor of the University. He had served the institution as Chairman of the Department of Physical Education and Recreation, Head Track Coach, and Vice Chancellor for University Relations. At their February 1986 meeting, the University of North Carolina Board of Governors, at the request of the University's Board of Trustees, decreed that Dr. Walker was Chancellor of the University rather than Interim Chancellor and made that action retroactive to the beginning of his term.

Dr. Tyronza R. Richmond, formerly Dean of the School of Business, succeeded Dr. Walker as Chancellor on July 1, 1986. Prior to his arrival at North Carolina Central University, Dr. Richmond was Associate Dean and Professor at the School of Business and Public Administration at Howard University.

Dr. Richmond resigned as Chancellor to return to the classroom and was succeeded on January 1, 1992 by Dr. Donna J. Benson as Interim Chancellor.

On July 31, 1992, Atty. Julius L. Chambers was appointed Chancellor of North Carolina Central University by the Board of Governors. He assumed that office on January 1, 1993. Atty. Chambers was formerly Director-Counsel for the NAACP Legal Defense and Educational Fund, Inc.

Mission

North Carolina Central University is a comprehensive university offering programs at the undergraduate and graduate levels. It is the nation's first public liberal arts institution founded for African Americans. The university maintains a strong liberal arts tradition and a commitment to academic excellence in a diverse educational and cultural environment. It seeks to encourage intellectual curiosity and to enhance the academic and professional skills of its students and faculty.

The mission of the university is to prepare students academically and professionally and to promote consciousness of social responsibility and dedication to the advancement of the general welfare of the people of North Carolina, the United States, and the world. The University will serve its traditional clientele of African American students; it will also expand its commitment to meet the educational needs of a student body that is diverse in race and other socioeconomic attributes.

Teaching is the primary focus of the University. As a part of that focus, the University encourages its faculty to pursue intellectual development and rewards effective teaching. The University recognizes, however, the mutually reinforcing impact of scholarship and service on effective teaching and learning. North Carolina Central University, therefore, encourages and expects faculty and students to engage in scholarly, creative, and service activities which benefit the global community.

Institutional Goals

1. To improve enrollment management procedures including identifying prospective students, developing an effective marketing and recruiting strategy, admitting students with good chances of academic success, and retaining those students to graduation.
2. To further develop and maintain a climate where there is a University-wide commitment to the general welfare of the institution, open and candid communication, open and amicable airing of differences, and mutual trust and respect among students, faculty, staff, and administrators.
3. To encourage, support, and reward outstanding performance in teaching, research, service, and creative activities.
4. To further strengthen administrative support for coordination of research activities through workshops, seminars, and consultation with individuals and departments.
5. To support the development and accreditation of professional schools and programs.
6. To enhance and develop programs which will attract mature and non-traditional

students to North Carolina Central University.

7. To further promote an image of a dynamic, innovative institution with programs that are responsive to the needs of all the people in its service area.

Educational Goals

1. To ensure that undergraduate students gain a knowledge of their cultural heritage as a framework for better understanding the diversity inherent in the existing social order.
2. To ensure that undergraduate students acquire a sense of history, an understanding of science, an appreciation of the fine and performing arts, and an understanding and appreciation of other cultures.
3. To encourage among all students an attitude about learning and intellectual work which includes familiarity with research and problem solving methods, the ability to employ critical thinking skills, the ability to synthesize knowledge from many sources, the enhancement of communication skills, the capacity for self-directed learning, and a commitment to life-long learning.
4. To ensure that all students acquire both general and specialized knowledge, thus contributing to high intellectual standards on campus and preparing students for advancement after graduation.

STATEMENT OF ACCREDITATION

North Carolina Central University is accredited by the Commission on Colleges of the Southern Association of College and Schools to award bachelor's degrees and master's degrees.

The School of Law is accredited by the American Bar Association. The program in

Library Science is accredited by the American Library Association. The program in Nursing is accredited by the Accrediting Services, National League for Nursing, Inc. Programs in the School of Business are accredited by the Association of Collegiate Business Schools and Programs. The Speech Pathology and Audiology program is accredited by the American Speech-Language-Hearing Association. The Nutrition and Dietetics track of the Home Economics program by the American Dietetic Association. Programs at the bachelor's and master's levels in early childhood education, elementary teaching, secondary teaching, and K-12 teaching and those at the master's level in educational communications and information technology, school principalship, supervision/curriculum development, and guidance counseling are accredited by the National Council for Accreditation of Teacher Education. All of these specialized accrediting bodies are recognized by the U. S. Department of Education. In addition, the School of Law is accredited by the Association of American Law Schools. The Speech Pathology and Audiology program is accredited by the North Carolina Speech-Language-Hearing Association. The Home Economics program is accredited by the American Home Economics Association. The Early Childhood Education track of the Family Relations and Childhood Development program in the Department of Human Resources has been accredited by the National Academy of Early Childhood Programs, a division of the National Association for Education of Young Children. The Health Education Program has been approved by the Society of Public Health Education/American Association of Health Education Baccalaureate Program Approval Committee. The North Carolina Department of Justice, Criminal Justice Standards Division has certified the Criminal Justice programs.

Teacher Education Programs are approved by the North Carolina State Department of Public Instruction. The North Carolina Board of

Nursing approves the Nursing Program. The School of Law is approved by the North Carolina State Bar Council.

NON-DISCRIMINATION STATEMENT OF POLICY

North Carolina Central University is committed to the principles of affirmative action and non-discrimination. The university welcomes diversity in its student body, faculty, staff and administration. It admits, hires, evaluates, promotes and rewards on the basis of relevant performance criteria without regard to race, gender, age, disability, national origin, ethnicity, veteran's status, religion, sexual orientation or lifestyle. It actively promotes respect of each individual.

In addition to those individuals already formally affiliated with the university, these affirmative action, non-discrimination principles are applied equally to all applicants for admission to any of the university's academic programs and to all applicants for employment by the university in any of its enterprises. The university maintains an Affirmative Action/Non-discrimination Committee and a system for addressing concerns on these matters.

DISABILITY SERVICES COMPLAINTS

Grievances in regard to rights under Section 504 should be filed with the Director of Student Support Services. This non-discrimination policy covers admission and activities, including but not limited to academic admissions, financial aid, educational services, and employment. Anyone desiring information concerning these provisions should contact:

Director of Student Support Services
Section 504 Coordinator
North Carolina Central University
Telephone (919) 560-6325

**THE UNIVERSITY OF NORTH CAROLINA
BOARD OF GOVERNORS**

C. Clifford Cameron	Chairman
Benjamin S. Ruffin	Vice-Chairperson
John F.A.V. Cecil	Secretary

Class of 1997

G. Irvin Aldridge	Manteo
Mark L. Bibbs	Raleigh
Lois G. Britt	Rose Hill
John F. A. V. Cecil	Asheville
Derick S. Close	Charlotte
Bert Collins	Durham
Wallace N. Hyde	Raleigh
Jack P. Jordan	Mount Gilead
Helen R. Marvin	Gastonia
D. Samuel Neill	Hendersonville
Ellen S. Newbold	Rose Hill
Maxine H. O'Kelley	Burlington
D. Wayne Peterson	Overland Park, KS
H. D. Reaves, Jr.	Fayetteville
Harold H. Webb	Raleigh
(Vacancy)	

Class of 1999

F. Edward Broadwell, Jr.	Asheville
Robert J. Brown	High Point
William T. Brown	Fayetteville
C. Clifford Cameron	Charlotte
Orville D. Coward, Sr.	Sylva
John C. Fennebresque	Charlotte
Larnie G. Horton, Sr.	Raleigh
C. Ralph Kinsey, Jr.	Charlotte
W. Kenneth Morgan, Sr.	Jacksonville
Cary C. Owen	Asheville
Barbara S. Perry	Kinston
Earl N. Phillips, Jr.	High Point
Marshall A. Rauch	Gastonia
Paul J. Rizzo	Chapel Hill
Benjamin S. Ruffin	Winston-Salem
Joseph E. Thomas	New Bern

Member Emeriti

James E. Holshouser, Jr.	Southern Pines
Samuel H. Poole	Raleigh

Ex-Officio

John E. Dervin	Chapel Hill
----------------	-------------

**THE UNIVERSITY OF NORTH CAROLINA
OFFICERS OF GENERAL ADMINISTRATION**

1996-97

C. D. Spangler, Jr.	President
Tracey C. Avinger	Administrative Assistant to the President
Richard H. Robinson, Jr.	Assistant to the President for Legal Affairs
Elizabeth C. Bunting David N. Edwards, Jr.	Special Assistants to the President
Rosalind Fuse-Hall	Secretary of the University
L. B. Corgnati, Jr.	Assistant Secretary of the University
Frances H. Hope	Assistant Secretary of the Board of Governors

Academic Affairs Division

Roy Carroll	Senior Vice President and Vice President for Academic Affairs
Ellen M. Barney	Assistant to Senior Vice President
Donna Benson Myra Cain	Associate Vice Presidents for Academic Affairs
Charles R. Coble (Interim) John H. Harrison, IV Judith M. Stillion (Interim)	
(Vacant)	Assistant Vice President for Academic Affairs
Jon B. DeFriese	Director, Networking and Media Services
Eugene McDowell	Director, Asheville Graduate Center

Communications Division

(Vacant)	Vice President for Communications
----------	--------------------------------------

Joni B. Worthington Assistant Vice President
for Communications

Tom Howe Director and General Manager,
UNC Center for Public Television

Lee Culpepper Director of Legal Affairs, UNC
Center for Public Television

Finance Division

William O. McCoy Vice President for Finance

George M. Burnette Associate Vice Presidents
Donald I. Caughill for Finance
Jeffrey R. Davies
Kennis R. Grogan
James O. Smith

Kitty McCollum Assistant Vice President for
Finance and University Benefits Officer

Henry A. Holmes Associate Vice President for
Finance and University Property Officer

Kenneth D. Craig Assistant Vice President
for Finance and Service Officer

Planning Division

Judith Pulley Vice President for Planning

(Vacant) Assistant Vice President for Planning

Gary Barnes Vice President for Program
Assessment and Public Service

A. Troy Barksdale Associate Vice President for
Program Assessment and Public Service

Linda Balfour Assistant Vice President for
Program Assessment and Public Service

Robert F. Hill, Jr. Director of Information Systems

Billy Helton Assistant Director of
Data Collection and Reporting

Public Affairs Division

David G. Martin Vice President for Public Affairs

Research Division

Jasper D. Memory Vice President for Research

Richard Linton Associate Vice President
for Research

Student Services and Special Programs Division

Nathan F. Simms, Jr. Vice President for
Student Services and Special Programs

George A. Antonelli Associate Vice Presidents
Cynthia P. Bonner for Student Services
and Special Programs

Bernell C. Dickinson Executive Director
N. C. State Approving Agency

(Vacant) Executive Director
N. C. State Education
Assistance Authority

NORTH CAROLINA CENTRAL UNIVERSITY BOARD OF TRUSTEES

E. Lavonia Allison (Secretary) Durham

Franklin R. Anderson Durham

Sekou Gargonnu (Ex-Officio Member) Durham

David E. Benevides Research Triangle Park

Brenda B. Broadie Durham

Dudley E. Flood Raleigh

Ralph K. Frasier Columbus, OH

Franklin E. McCain Charlotte

J. Terry Sanford, Jr. Durham

William A. Shore Research Triangle Park

William G. Smith (Vice Chair) Durham

R. Edward Stewart Durham

Peggy M. Ward (Chair) Charlotte

**NORTH CAROLINA CENTRAL UNIVERSITY
OFFICERS AND ADMINISTRATIVE STAFF
1996-1997**

OFFICE OF THE CHANCELLOR

Julius L. Chambers, LL.M.	Chancellor
Margot M. Flood, B.A.	Administrative Assistant II
James E. Tyson, B.S.	Executive Assistant to the Chancellor
Marilyn M. Nance, J.D.	Internal Auditor
George H. Walls, M.A.	Special Assistant to the Chancellor
William E. Lide, Ph.D.	Athletic Director
McDonald Vick, B.A.	Chief of Security
Lula G. Thorpe, B.A.	Special Assistant to the Chancellor
Shirley H. Hamilton, M.B.A.	Assistant to the Chancellor
Kaye R. Webb, J.D.	Legal Assistant
Melvin L. Riggs, M.S.	Title III Coordinator
Carmalita Spicer, M.Ed.	Director of Public Relations
David H. Witherspoon, B.A.	Director of News Bureau
Audrey L. Crawford-Turner, J.D.	EEO/Affirmative Action Officer
Beverly Washington Jones, Ph.D.	Director, Institute for the Study of Minority Issues and Community Services

ACADEMIC AFFAIRS

Patsy B. Perry, Ph.D.	Interim Provost, Vice Chancellor
-----------------------	----------------------------------

SCHOOL OF GRADUATE STUDIES

Rudolph S. Jackson, Ph.D.	Dean
---------------------------	------

COLLEGE OF ARTS AND SCIENCES

Bernice D. Johnson, Ph.D.	Interim Dean
Lana T. Henderson, Ph.D.	Associate Dean
Mattie E. Moss, Ph.D.	Associate Dean

Academic Department Chairs

Melvin Carver, Ph.D.	Art
John E. Mayfield, Ph.D.	Biology
John A. Myers, Ph.D.	Chemistry
George P. Wilson, Ph.D.	Criminal Justice
Johnny B. Alston, III, Ph.D.	Theatre
Arlene Clift-Pellow, Ph.D.	English
Albert P. Barnett, Ph.D.	Geography
Theodore R. Parrish, D.P.H.	Health Education
Sylvia M. Jacobs, Ph.D.	History
Beverly A. Bryant, Ed.D.	Human Sciences
Manuel Keepler, Ph.D.	Mathematics/Computer Sciences
Thomas N. Hammond, Ph.D.	Modern Foreign Languages
Celia A. Davidson, Ph.D.	(Acting) Music

Celia A. Davidson, Ph.D.
W. Kaye McDonald, Ph.D.
Vacant
Virginia Politino, Ph. D.
Angelaurelio F. Soldi, Ph.D.
Joseph Aicher, Ph.D.
Elwood L. Robinson, Ph.D.
George H. Conklin, Ph.D.

(Acting) Music
Nursing
(Moved under the English Dept.) Philosophy
Physical Education and Recreation
Physics
Political Science
Psychology
Sociology

SCHOOL OF BUSINESS

Sundar W. Fleming, Ph.D.
Raphael N. Thompson, M.B.A.
Youngil Cho, Ph.D.
John V. Turner, M.Ed.

Dean
Associate Dean for Graduate Programs & Corporate Relations
Associate Dean for Undergraduate Studies
Associate Dean for Student Affairs

SCHOOL OF EDUCATION

Sammie C. Parrish, Ph.D.
Cecelia Steppe-Jones, Ph.D.
Virginia L. East, Ed.D

Dean
Associate Dean
(Interim) Associate Dean

SCHOOL OF LAW

Percy L. Luney, J.D.
Charles E. Smith, L.L.M.
Mark W. Morris, L.L.M.
Adrienne L. Meddock, J.D.
Sandra J. Polin, J.D.
Monica K. Kalo, J.D.
Lisa M. Crutchfield, J.D.
Tracy H. Barley, J.D.

Dean
Associate Dean
Associate Dean
(Interim) Assistant Dean for Evening Program
Assistant Dean for Day Program
Assistant Dean for Development
Director of Placement
Director of Recruitment

SCHOOL OF LIBRARY AND INFORMATION SCIENCES

Benjamin F. Speller, Jr., Ph.D.
Duane Bogenschneider, M.L.I.S.
Robert D. Montgomery, M.A.

Dean
Enrollment Manager
Director, Information Services

UNIVERSITY COLLEGE

Eugene A. Eaves, Ph.D.
Vacant

Interim Dean
Assistant to Dean

RESEARCH, EVALUATION AND PLANNING

Lawrence A. Lee, Ph.D.
Fitzpatrick U. Anyanwu, Ed.D.
Karin A. Beckett, M. A.
Sandra E. Davis, M.B.A.
Duncan J. Floyd, B.S.
Kenneth L. Chambers, Ph.D.
Roy R. Cappadona, B.S.
Donald R. Nolen, M.P.H.
Paul Harrison, B. S.

(Interim) Associate Vice Chancellor
Director, Research and Planning
Manager, Research and Evaluation
Director, Institutional Studies
(Interim) Director, Information Technology Planning
(Interim) Director, Information Technology Services
Associate Director, Information Technology Services
(Interim) Director, Administrative Technology Services
Operations Manager

ACADEMIC SERVICES

LaFayette W. Lipscomb, Ph.D.
Nancy R. Rowland, M.A.
Mildred L. Lyon, M.A.
Alice J. Mayer, J.D.
Vacant
Barbara S. Moore, B.A.
Leon B. Hardy, Ph.D.
Sherry M. Eaton, Ph.D.
N. Scherrye Williams, M.A.

Associate Vice Chancellor
Director of Admissions
University Registrar
Associate Registrar
Assistant Registrar
Director, Health Careers
Director, Honors Program
Director, University Testing
Assistant Director, University Testing

ACADEMIC ADVISING

Mattie E. Moss, Ph.D.
Sarah Bell-Lucas, M.A.

Director
Academic Advising Coordinator

ART MUSEUM

Kenneth G. Rodgers, M.F.A.

Director

LEARNING RESOURCES

Marvin E. Duncan, Ph.D.
Lawrence S. Lovette, M.A.
James E. Osler, Ed.D.

Director
Associate Director
Assistant Director

LIBRARY SERVICES

Floyd C. Hardy, Ph.D.

Director

SPONSORED RESEARCH AND PROGRAMS

Nan A. Broussard, M. A.

Director

DEVELOPMENT

David W. Hoard, B.A
Tonia Butler, J.D.
Jacqueline H. Brodie, M.A.
Angela Andrews
Lillie B. Elliott
E. Elaine Barbee
Stephanie B. Troy, B.A.
William E. Evans, B.S.
Alfred E. Richardson, Sr., B.A.
Gloria A. Haynes, B. S.
Susan L. Hester, M.P.H.

Vice Chancellor
Special Assistant to Vice Chancellor for Development
Executive Assistant to Vice Chancellor for Development
Research Assistant
Coordinator of Information Services
Office Manager
Gift Coordinator
Director of University Relations
Director of Alumni Affairs
Director of Corporate and Foundation Relations
Director, Annual Giving

FOUNDATION

Sylvia A. Sharpe, M.B.A.
Yvonne Fisher, B.S.
KaSandra Bryant, B. S.

Executive Director of N.C.C.U. Foundation
Foundation Accountant
Assistant Accountant

FINANCIAL AFFAIRS

<p>Ruby Pittman, M.B.A. Lola T. McKnight, B.S. Lisa B. Mitchell, B.S. Jacqueline L. Scurlock Mozell Robinson, B.S., C.P.M. Chester Ray, Jr. Lula M. Bullock, B.S. Christopher L. Hinton, M.B.A., C.P.A. Ursula Berger, B.A. Wayne T. Jones, B. S. Reginald K. Smith, M.P.A. Joseph D. Alston, B.S. Arshad Y. Ali, B.A. Kerry O. Randel, B.S., M.A. Edward O. King, B.S.E.E., M.S.E.E., Ph.D. Aaron J. Barnes Arthur Cheetham-Smart, B.S. Richard T. Goward Kathy M. Wolfe George T. McGhee Sharon J. Oliver, M.A. Vernestine Bannerman, B.S. Lillian B. Downey, M.A. Kimberly J. Sherrill, B.A. Joyce C. Page, M.A. Shirley B. Ragland, M.A. Karl E. Sanders, B. S. Sheila L. Stone Mavis B. Lewis, B.S. Ronald D. Reaves, B.S. Brenda E. Harris, A.A. Vanessa Gregory, A.S. Carolyn J. Thomas, M.A. Charles R. Warren, M.A. Francina Y. Tate, B.S.</p> <p>Vacant Nathaniel Hall, B.S., C.P.M. Ralph Fennell, B.S.C., C.P.M. Lucille B. Streeter, B. S. Norma P. Smith, B.A. Mary M. Thompson, B.S. Carlos J. Rivera, B.B.A. Linda S. Belton, B.S. Joyce M. Smith, B.A. Shirley D. Brown, B. S.</p>	<p style="text-align: right;">Vice Chancellor Assistant to the Vice Chancellor Federal Loans Officer Student Accounting Supervisor Director of Administrative Services Mail Center Supervisor Budget Officer Associate Vice Chancellor for Financial Affairs Administrative Assistant for Food Services System Accountant Ticket Office/Vending Manager Book Store Manager Central Stores/Receiving Manager Director of Physical Plant/Facilities Building Systems Engineer Building Maintenance Supervisor Building Systems Engineer Housekeeping Supervisor Grounds Supervisor Central Heating Plant/HVAC Supervisor Assistant Vice Chancellor for Scholarships and Student Aid Assistant Scholarships and Student Aid Manager Assistant Director for Scholarships and Student Aid Student Services Manager I Director of Purchasing Purchasing Manager Purchasing Agent/Contracts Specialist Data Coordinator Director of Human Resources Assistant Director of Human Resources Compensation/Staffing Manager Employee Services Officer Benefits Officer Employment Officer Staff Development Officer Comptroller Accounting Manager Director of Cash Management (Interim) Reporting Manager Director of Disbursements Accounts Payable Supervisor Accountant I Endowment Accountant Bursar Federal Trust and Appropriation Accountant</p>
--	---

STUDENT AFFAIRS

Arthur G. Affleck, J.D.	Vice Chancellor
Roger G. Bryant, Ed.D.	Associate Vice Chancellor and Dean of Students
Tyrone Bledsoe, Ph.D.	Assistant Vice Chancellor
Evelyn C. Deck, M.A.	Assistant Dean of Students
James B. Fuller, Ed.D.	Director, Student Support Services
Paul Goldblatt, M. A.	Director, Residence Operations
Vacant	Associate Vice Chancellor and Director of Counseling Center
Peggy Alexander, M.A.	Dean of Student Development and
	Director, University Career Services
Dietrich A. Morrison, M.A.	Student Activities Officer
Walter Mack	Interim Director of Campus Religious Life
Thurman Prescott, Jr., B.A.	Director of Student Union
Lillian R. Horne, M.D.	Director of Student Health Services

FACULTY SENATE

James M. Schooler, Ph.D.	Chair
Freddie L. Parker, Ph.D	Vice Chair
Amal M. Abu-Shakra, Ph.D.	Secretary
Acie L. Ward, J.D.	Parliamentarian

*Facts Concerning Capital
and Fiscal Operations*

Facilities

INSTRUCTIONAL

Year Completed	Name	Assignable Sq. Ft.	Offices	Class Rooms	Class Labs	Other Labs
1937	Duke Auditorium	10,566	2		1	
1937	Robinson Science	16,536	22	10	1	11
1950	Edmonds Classroom	14,657	44	11		4
1950	McDougald Gym	35,934	8	4		
1950	Fine Arts	14,736	7	2	2	10
1950	Shepard Library	39,303	25	4		
1952	Dent Human Sciences	13,070	12	6		7
1955	Taylor Education	25,269	48	13	2	1
1956	Lee Biology	20,834	14	5		37
1956	Willis Commerce	25,105	57	8		5
1957	Biology Greenhouse	440				
1969	Bowling Alley	5,358				
1969	Hubbard Chemistry	19,082	10	4	2	17
1976	Farrison-Newton Communications	51,898	67	28		8
1976	Edwards Music	14,984	19	4		15
1976	Shepard Library Addition	37,004	3			
1980	Turner Law School	52,292	50	7	1	
1982	Miller-Morgan Health Science	28,784	26	12	2	6
1984	Whiting Criminal Justice	17,837	23	12	3	
1985	Walker P. E. Complex	102,013	30	11	1	4
Total		545,702	467	141	15	125

ADMINISTRATIVE/FACULTY/STUDENT SERVICES

Year Completed	Name	Assignable Square Ft.	Offices	Year Completed	Name	Assignable Square Ft.	Offices
1925	Old Chancellor Res.	2,487	6	1963	Black History Ctr. 521 Nelson	1,134	3
1929	Hoey Administration	19,643	85	1963	Honors Court 525 Nelson St.	813	4
1930	Alexander-Dunn	12,856	34	1965	Storage Building	11,694	1
1937	Cottage 1 (Security)	2,028	9	1966	Pearson Cafeteria	21,686	
1937	Jordan House	1,747	8	1968	Elder Student Union	26,543	17
1937	Human Resources Building	1,557	5	1977	Physical Plant	7,996	10
1937	517 George St.	1,730	7	1983	Cafeteria Annex	2,824	4
1939	Old Senior (women)	8,230	31	1991	Hayti Heritage Center (Afro-American Resources)	2,734	3
1945	Human Resources Bldg.	3,396	13				
1950	Old Health Building	15,253	22	1937	William Jones	10,901	39
1956	McDougald Admissions	3,410	8	1940	Student Services Bldg.	13,421	4
TOTAL						172,083	313

Facilities

RESIDENTIAL

Year Completed	Name	Square Ft.	Occupancy	Offices
Residence Halls				
1930	Shepard (coed-honors)	28,733	158	2
1937	McLean (women)	16,649	79	2
1937	Rush (women)	17,187	88	1
1951	Chidley (men)	77,282	653	7
1951	George St. Apts. (graduate)	10,750	28	
1960	Latham (women)	28,453	200	1
1966	Baynes (women)	52,314	408	1
1968	Eagleson (women)	55,517	408	1
Total		286,885	2022	15

OTHER RESIDENTIAL

1963	523 Nelson St.	850		
Total		850		

Total Square Footage for all Facilities 1,005,520

SOURCE: North Carolina Facilities Inventory and Space Utilization Report, Fall 1997

Physical Plant Assets

DESCRIPTION OF ASSETS	1986-87	1991-92	1996-97
LAND:			
Book Value at Beginning of Year	\$980,091	\$980,981	\$1,161,367
Additions During Year			
Deductions During Year			
Book Value at End of Year	980,091	980,981	1,161,367
BUILDINGS:			
Book Value at Beginning of Year	38,040,657	54,471,640	57,653,254
Additions During Year	952,433	546,986	2,622,387
Deductions During Year			
Book Value at End of Year	38,993,090	55,018,626	60,275,641
EQUIPMENT:			
Book Value at Beginning of Year	6,778,416	12,240,057	5,103,401
Additions During Year	960,506	1,838,219	1,062,626
Deductions During Year	2,262	10,096	180,037
Book Value at End of Year	7,736,660	14,068,180	5,985,990
TOTAL (BOOK VALUE)	47,709,841	70,067,787	67,422,998

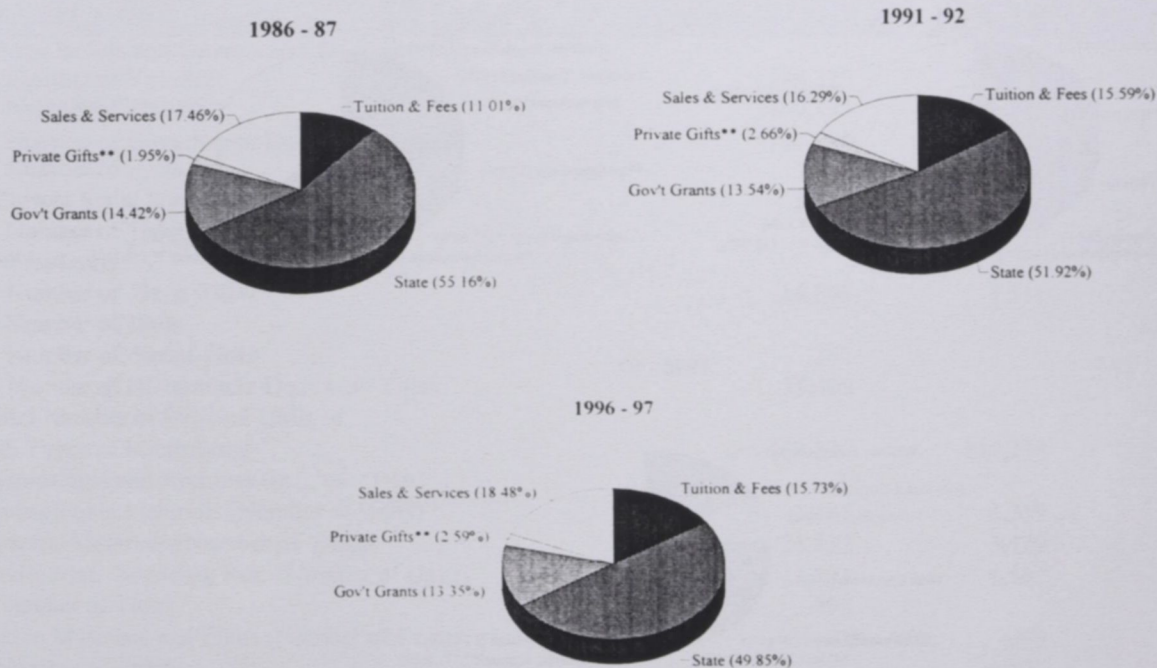
SOURCE: IPEDS F-1 Current Funds Expenditures and Transfers Reports

Financial Affairs

Revenues*

CURRENT FUNDS REVENUES	1986-87	1991-92	1996-97
Tuition & Fees	\$4,473,040	\$8,086,777	\$11,307,762
State	22,418,549	26,937,097	35,825,925
Government Grants & Contracts:			
Federal, Unrestricted	283,913	*	270,169
Federal, Restricted	5,456,378	*	8,569,551
State, Unrestricted	4,332	231,308	30,221
State, Restricted	116,366	6,719,187	726,209
Local, Unrestricted	*	553	*
Local, Restricted	*	75,138	*
Private Gifts, Grants & Contracts:			
Unrestricted	57,023	316,266	229,990
Restricted	212,960	571,389	841,429
Endowment Income:			
Unrestricted	10,754	58,748	30,986
Restricted	51,842	*	187,824
Sales & Services of Educational Activities	*	171,691	689,907
Sales & Services of Auxiliary Enterprises	7,096,922	8,277,862	12,589,781
Other Sources	460,139	434,177	573,550
Independent Operations			

TOTAL CURRENT FUNDS REVENUES **\$40,642,218** **\$51,880,193** **\$71,873,304**



* The focus of this document varies from year to year; therefore, data for particular categories are sometimes not reported.

** Includes Endowment Income and Other Sources

SOURCE: IPEDS F-1 Current Funds Expenditures and Transfers Reports

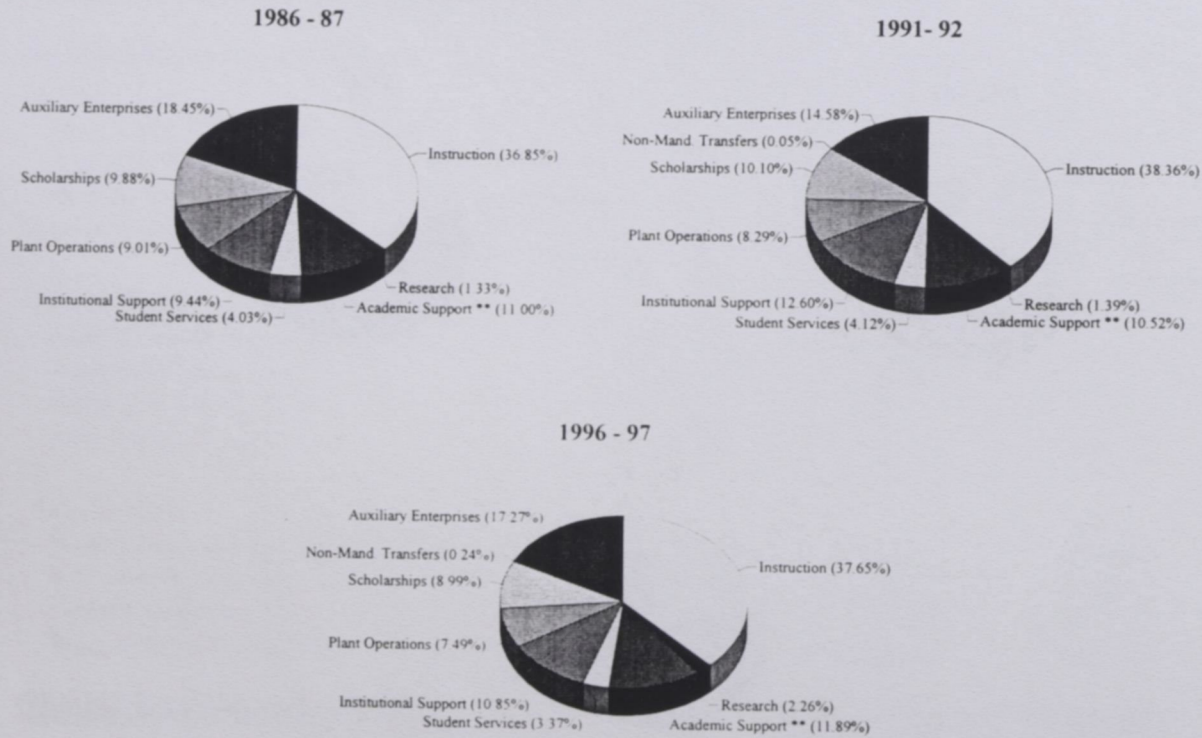
Financial Affairs

Expenditures*

CURRENT FUNDS EXPENDITURES

	1986-87	1991-92	1996-97
Instruction	\$14,966,180	\$19,901,711	\$27,115,220
Research	538,704	719,059	1,625,998
Public Service	194,917	401,809	723,425
Academic Support (Including Libraries)	4,273,273	5,055,184	7,843,080
Student Services	1,638,387	2,139,636	2,429,344
Institutional Support	3,832,765	6,539,095	7,810,557
Operation & Maintenance of Plant	3,660,505	4,299,069	5,391,557
Scholarships & Fellowships			
Awards from Unrestricted Funds	279,562	711,600	1,326,180
Awards from Restricted Funds	3,733,852	4,530,779	5,144,924
Non-Mandatory Transfers			
Unrestricted		23,532	169,553
Mandatory Transfers			
Unrestricted			
Auxiliary Enterprises (Including Mandatory Transfers)	7,490,925	7,566,471	12,439,078
Independent Operations (Including Mandatory Transfers)			

TOTAL CURRENT FUNDS EXPENDITURES AND TRANSFERS \$40,609,070 \$51,887,945 \$72,018,916



* The focus of this document varies from year to year; therefore, data for particular categories are sometimes not reported.

** Includes Public Service

SOURCE: IPEDS F-1 Current Funds Expenditures and Transfers Reports, Fall 1997

Financial Affairs

Library Staff, Collections, and Expenditures

	1987	1992	1997
LIBRARY STAFF FTE			
Librarians and Other Professional Staff	24	24	26
All Other Paid Staff	25	22	25
Student Assistants From All Funding Sources			5.9
Total FTE Staff			56.6
OPERATING EXPENDITURES			
Salaries and Wages	965,617	\$740,933	\$916,340
All Other Paid Staff		431,278	519,315
Student Assistants		63,250	33,850
Collections			
Print Materials	179,118	242,733	349,980
Current Serial Subscriptions	471,758	535,478	969,717
Microforms	33,398	52,467	179,738
Machine Readable Materials		23,208	
Audiovisual Materials	11,911	7,212	9,554
Computer Files and Research Services			149,869
Other	3,057	31,930	
Preservation	28,250	17,456	22,971
Equipment	9,060		
Furniture and Equipment		35,702	11,317
Computer Hardware/Software			22,899
Bibliographic Utilities, Networks and Consortia			198,979
Other Operating Expenditures	14,384	22,016	31,608
Total Operating Expenditures	\$1,716,553	\$2,203,663	\$3,416,137
COLLECTIONS			
Book Serials and Government Documents			
Number of Volumes	586,329	590,610	525,854
Number of Titles	430,293	444,825	479,586
Number of Government Document Titles	101,795	115,307	109,423
Number of Units			137,130
Current Serial Subscriptions	3,391	4,132	5,826
Number of Titles		3,410	5,509
Microforms			
Number of Book Titles	16,508	8,511	341,289
Number of Units			1,242,123
Number of Serial Titles	262		
Number of Government Document Titles	55,469		
Total Number of Physical Units of			
all Types of Microforms	463,876	721,279	
Manuscripts and Archives (in Linear Feet)	30		80
Cartographic Materials (Number of Units)	1,875	3,219	3,193
Graphic Materials (Number of Units)	21,832	3,429	2,660
Audio Mat. /Sounding Rec. (Number of Units)	1,101	1,562	907
Number of Titles	293		737
Video Materials and Films (Number of Units)	95	365	1,586
Number of Titles		527	1,553
Machine Readable Materials/Computer Files (Number of Titles)	310	985	1,708
Machine Readable Materials/Computer Files (Number of Units)			2,441
Other Library Materials (Number of Titles)	23	25	23

* The focus of this document varies from year to year; therefore, data for particular categories are sometimes not reported.

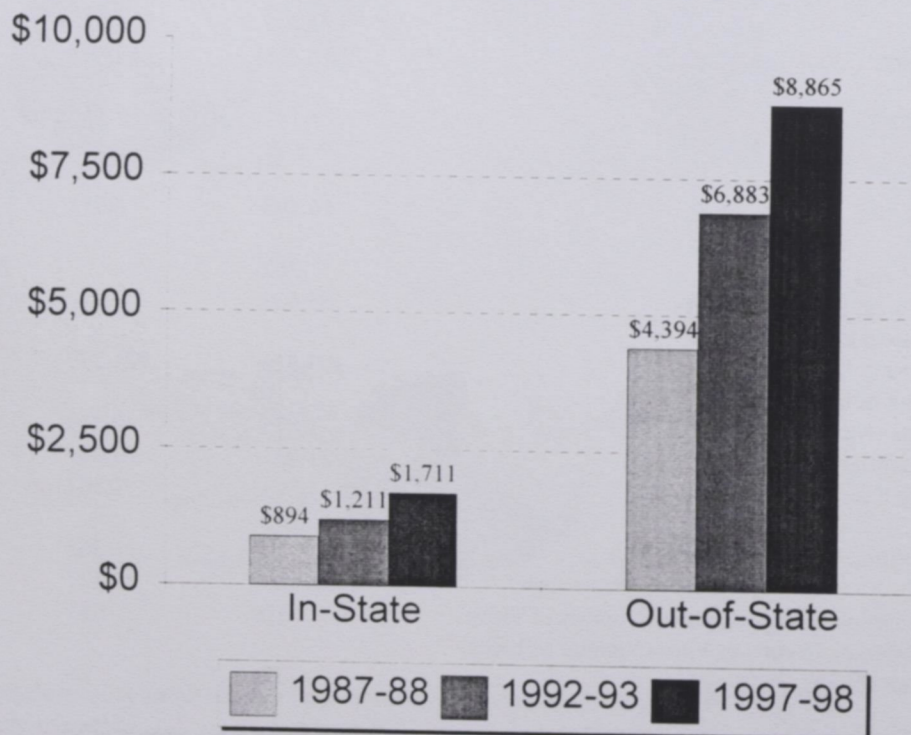
SOURCE: IPEDS Libraries Reports

Financial Affairs

Student Tuition, Fees, and Charges for the 1997-98 Academic Year

CATEGORY	UNDERGRADUATE		GRADUATE		FIRST PROFESSIONAL	
	IN-STATE	OUT-OF STATE	IN-STATE	OUT-OF STATE	IN-STATE	OUT-OF STATE
TUITION	\$874.00	\$8,028.00	\$874.00	\$8,028.00	\$874.00	\$9,826.00
OTHER REQUIRED FEES						
Athletic Fee	199.00	199.00				
Health Services Fee	148.00	148.00				
Debt Services Fee (s)	81.00	81.00				
General Student Activity Fee	271.00	271.00				
Educational & Technical	137.50	137.50				
TOTAL FEES	836.50	836.50	801.50	801.50	938.50	938.50
TOTAL TUITION & REQUIRED FEES	1,710.50	8,864.50	1,675.50	8,829.50	1,812.50	10,764.50
RESIDENCE HALL FEE	1,808.00	1,808.00	1,808.00	1,808.00	1,808.00	1,808.00
BOARD PLAN (7-DAY)	1,575.50	1,575.50	1,575.50	1,575.50	1,575.50	1,575.50

Undergraduate Tuition and Required Fees



SOURCE: NCHED A-3 Student Tuition, Fees, and Charges Reports, Fall 1997

Financial Affairs

Student Financial Aid 1996-97 *

Scholarships, Grants, and Awards

	Number	Average Award	Total Amount
Undergraduate			
Non-Athletic	1,543	2,120	3,271,168
Athletic	104	4,487	466,640
Supplemental Education Opportunity Grant	612	1,333	815,723
Pell - Entitlement Grant	1,980	1,751	3,467,687
Vocational Rehabilitation	69	1,494	103,067
Veterans Benefits	144	2,391	344,258
Graduate and Professional			
Assistance to Professional Students (Law)	111	1,582	175,644
Fellowships, Traineeships, Grants & Scholarships (Graduate)	129	1,875	241,934
Assistantships (Graduate)	54	2,650	143,122
Veterans Benefits	23	1,880	43,242

Student Employment

Undergraduate			
Federal Work-Study	208	783	162,853
Other Student Employment	107	970	103,754
Graduate and Professional			
Federal Work-Study	23	2,668	61,375
Other Student Employment	85	1,841	156,461

Student Loans

Undergraduate			
Federal Direct Student Loan	2,618	4,880	12,776,901
Perkins	76	1,405	106,765
Federal Plus Loan	276	4,825	1,331,822
Graduate and Professional			
Federal Direct Student Loan	623	11,935	7,435,771
Perkins			

Financial Aid Awards

Total Number of Aid Applicants	4,102		
Applicants Who Actually Enrolled	4,057		
Number of Awards and Loans	11,541		
Unduplicated Number of Aid Recipients	4,057		
% of All Enrolled Students Receiving Aid **	62.1%		
Dollar Amount of Awards and Loans	\$31,231,591		
Mean Award	\$2,706		
Mean Award Per Recipient	\$7,698		

* Undergraduate scholarships from external sources are not included.

** The percentage of students eligible to receive awards is sometimes cited as an indicator of financial aid activity. This figure would be higher than the percentage calculated on all enrolled students.

SOURCES: NCHED A-10 Student Financial Aid Summary, Fall, 1997 and OCR 23KB3 Financial Assistance to Student Institutions, Fall 1997

Facts to Support Planning

Degree Programs and Program Tracks

Academic Program Inventory

API CODE	DIVISION AND PROGRAM TITLE	DEGREE	PROGRAM TRACK
BIOLOGICAL SCIENCE			
0401	Biology, General	B.S.	Biology
		B.S.	Biology, Secondary Education
		M.S.	Biology
		M.S.	Biology, Secondary Education
BUSINESS AND MANAGEMENT			
0502	Accounting	B.B.A.	Accounting
0506	Business Management and Administration	B.B.A.	Business Administration
		B.B.A.	Banking and Finance
		B.B.A.	Computer Information Systems
		B.B.A.	Management
		B.B.A.	Marketing
		M.B.A.	Business Administration
COMPUTER & INFORMATION SCIENCES			
0701	Computer & Information Sciences, General	B.S.	Computer Science
0702	Information Sciences & Systems	M.I.S.	Information Sciences
EDUCATION			
0802	Elementary Education, General	B.A.	Elementary Ed., Intermediate (4-6)
		B.A.	Early Childhood Education (K-4)
		M.ED.	Elementary Education (K-6)
		M.ED.	Middle Grades (6-9)
0804	Middle Grades Education	B.A.	Middle Level Education
0808	Special Education, General	M.ED.	Education of Mentally Handicapped
		M.ED.	Education of the Behaviorally-Emotionally Handicapped
		M.ED.	Visual Impairment

Degree Programs and Program Tracks

Academic Program Inventory

API CODE	DIVISION AND PROGRAM TITLE	DEGREE	PROGRAM TRACK
0826	Student Personnel	M.A.	School Counseling
		M.A.	Career Counseling and Placement
		M.A.	Agency Counseling
0835	Physical Education	B.S.	Physical Education
		B.S.	Recreation Administration
		M.S.	Physical Education
		M.S.	Special Physical Education
		M.S.	Physical Education, Secondary Education
		M.S.	Recreation Administration
0837	Health Education	B.S.	Health Education
		B.S.	Community Health Education
0893	Educational Administration & Supervision	M.A.	Educational Leadership
0897	Educational Media	M.A.	Instructional Media
FINE AND APPLIED ARTS			
1002	Art	B.A.	Art, General
		B.A.	Visual Communications
		B.A.	Art, Fine Art
		B.A.	Art, Art Education
1004	Music	B.A.	Music (Liberal Arts Program)
		B.A.	Music, Music Education
		B.M.	Jazz
		B.M.	Sacred Music
1007	Theatre	B.A.	Theatre
		B.A.	Theatre, Education
		B.A.	Theatre Arts Education, K-12
FOREIGN LANGUAGES			
1102	French	B.A.	French
		B.A.	French, Secondary Education
1105	Spanish	B.A.	Spanish
		B.A.	Spanish, Secondary Education

Degree Programs and Program Tracks

Academic Program Inventory

API CODE	DIVISION AND PROGRAM TITLE	DEGREE	PROGRAM TRACK
HEALTH PROFESSIONS			
1203	Nursing	B.S.N.	Nursing
1220	Speech Pathology & Audiology	M.ED.	Communication Disorders
HUMAN SCIENCES			
1301	Human Sciences, General	B.S.	Human Sciences
		B.S.	Family Consumer Sciences, Ed (With Licensure)
		B.S.	Textiles and Apparel
		M.S.	Family Consumer Sciences Ed. (With Licensure)
1305	Family Relations & Child Development	B.S.	Early Childhood Education (B-K) Licensure
1306	Foods & Nutrition	B.S.	Hospitality and Tourism Administration
		B.S.	Nutrition and Dietetics
LAW			
1401	Law, General	L.L.B.	Law
		J.D.	Law
LETTERS			
1501	English, General	B.A.	English
		B.A.	English, Secondary Education
		M.A.	English
		M.A.	English, Secondary Education
LIBRARY SCIENCE			
1601	Library Science, General	M.L.S.	Library Science
MATHEMATICS			
1701	Mathematics, General	B.S.	Mathematics
		B.S.	Mathematics, Secondary Education
		B.S.	Actuarial Science
		M.S.	Mathematics
		M.S.	Mathematics, Secondary Education
PHYSICAL SCIENCES			
1902	Physics, General	B.S.	Physics
		B.S.	Physics, Secondary Education
1905	Chemistry, General	B.S.	Chemistry
		B.S.	Chemistry, Secondary Education
		M.S.	Chemistry
		M.S.	Chemistry, Secondary Education

Degree Programs and Program Tracks

Academic Program Inventory

API CODE	DIVISION AND PROGRAM TITLE	DEGREE	PROGRAM TRACK
1917	Earth Sciences, General	M.S.	Earth Sciences
PSYCHOLOGY			
2001	Psychology, General	B.A.	Psychology
		M.A.	Psychology
PUBLIC AFFAIRS AND SERVICES			
2102	Public Administration	M.P.A.	Public Administration
2104	Social Work, Helping Services	B.S.W.	Social Work
2105	Criminal Justice	B.S.	Criminal Justice
		M.S.	Criminal Justice
SOCIAL SCIENCES			
2205	History	B.A.	History
		B.A.	History, Secondary Education
		M.A.	History
		M.A.	History, Secondary Education
2206	Geography	B.S.	Geography
2207	Political Science & Government	B.A.	Political Science
2208	Sociology	B.A.	Sociology
		M.A.	Sociology
INTERDISCIPLINARY STUDIES			
4902	Biological & Physical Sciences	B.S.	Environmental Sciences

Note: North Carolina Central University is authorized to offer degree programs in 16 discipline divisions at the baccalaureate, master's and professional levels.

Source: Academic Program Inventory, The University of North Carolina, dated November 20, 1997

Degrees Conferred

Undergraduate by Field of Study

COLLEGE OF ARTS & SCIENCES	1987		1992		1997	
	N	%	N	%	N	%
Department of Art	9	2.0	4	0.8	13	1.8
Department of Biology	17	3.9	32	6.3	47	6.4
Environmental Sciences	--	--	--	--	1	0.1
Department of Chemistry	7	1.6	8	1.6	16	2.2
Department of Criminal Justice	41	9.3	54	10.6	99	13.4
Department of Theatre	3	0.7	2	0.4	4	0.5
Department of English	9	2.0	26	5.1	40	5.4
Department of Geography	5	1.1	5	1.0	1	0.1
Department of Health Education	4	0.9	8	1.6	10	1.4
Department of History						
History	10	2.3	12	2.4	35	4.7
Social Sciences, General	--	--	--	--	--	--
Department of Human Sciences						
Textiles and Apparel	--	--	5	1.0	--	--
Nutrition and Dietetics	1	0.2	2	0.4	--	--
Human Sciences, General	20	4.5	9	1.8	23	3.1
Family and Consumer Sciences, Ed.	--	--	--	--	13	1.8
Department of Mathematics & Computer Science						
Mathematics, General	8	1.8	19	3.7	12	1.6
Computer & Information Science	2	0.5	5	1.0	11	1.5
Department of Modern Foreign Languages						
French	--	--	2	0.4	1	0.1
Spanish	1	0.2	3	0.6	5	0.7
Department of Music	6	1.4	6	1.2	6	0.8
Department of Nursing	45	10.2	17	3.3	66	8.9
Department of Philosophy *	1	0.2	1	0.2	2	0.3
Department of Physical Education						
Parks and Recreation	7	1.6	4	0.8	1	0.1
Physical Education	3	0.7	5	1.0	22	3.0
Social Work, Helping Services	--	--	--	--	4	0.5
Department of Physics	1	0.2	1	0.2	--	--
Department of Political Science & Government	101	23.0	100	19.6	92	12.4
Department of Psychology	7	1.6	12	2.4	35	4.7
Department of Sociology	25	5.7	17	3.3	23	3.1
TOTAL ARTS & SCIENCES	333	75.7	359	70.4	582	78.8

Degrees Conferred

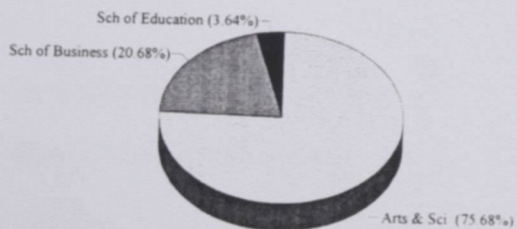
Undergraduate by Field of Study (Continued)

	1987		1992		1997	
	N	%	N	%	N	%
SCHOOL OF BUSINESS						
Accounting	13	3.0	32	6.3	18	2.4
Business Economics	1	0.2	--	--	--	--
Business Management and Administration	74	16.8	79	15.5	82	11.1
Business, Commerce & Distributive Education	3	0.7	2	0.4	--	--
TOTAL SCHOOL OF BUSINESS	91	20.7	113	22.2	100	13.5
SCHOOL OF EDUCATION						
Elementary Education, General	16	3.6	35	6.9	48	6.5
Middle Grades Education	--	--	3	0.6	9	1.2
TOTAL SCHOOL OF EDUCATION	16	3.6	38	7.5	57	7.7
TOTALS	440	100	510	100	739	100

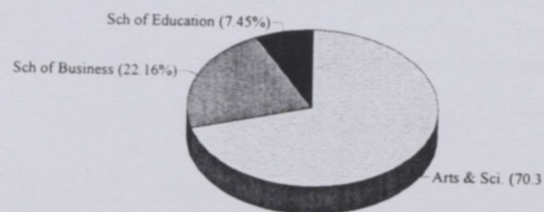
SOURCE: Graduated Student Data Files, July 1, 1996 thru June 30, 1997

* Philosophy was moved under English Department

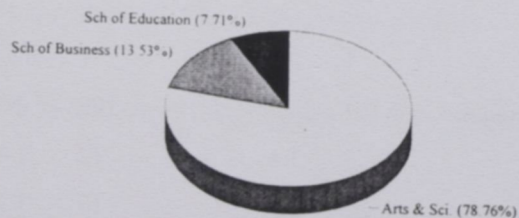
Degrees Conferred, 1987



Degrees Conferred, 1992



Degrees Conferred, 1997



Degrees Conferred

Graduate by Field of Study

	1987		1992		1997	
	N	%	N	%	N	%
COLLEGE OF ARTS & SCIENCES						
Department of Biology	6	2.9	3	1.1	4	1.2
Department of Chemistry	3	1.5	--	--	3	0.9
Department of Criminal Justice	--	--	3	1.1	8	2.4
Department of English	4	2.0	2	0.8	1	0.3
Department of History History	6	2.9	5	1.9	4	1.2
Department of Human Sciences Human Sciences, General	3	1.5	7	2.7	6	1.8
Department of Mathematics & Computer Science Mathematics, General	3	1.5	1	0.4	1	0.3
Department of Modern Foreign Languages French	--	--	--	--	--	--
Department of Music	1	0.5	--	--	3	0.9
Department of Physical Education Physical Education	4	2.0	3	1.1	3	0.9
Parks and Recreation			1	0.4	--	--
Department of Public Administration	--	--	23	8.8	20	6.0
Department of Psychology	11	5.4	5	1.9	3	0.9
Department of Sociology	1	0.5	1	0.4	4	1.2
TOTAL ARTS & SCIENCES	42	20.5	54	20.6	60	18.1
SCHOOL OF BUSINESS						
Business, Commerce & Distributive Education	2	1.0	4	1.5	--	--
Business Management and Administration	3	1.5	9	3.4	11	3.3
TOTAL SCHOOL OF BUSINESS	5	2.4	13	5.0	11	3.3
SCHOOL OF EDUCATION						
Special Education	12	5.9	10	3.8	12	3.6
Educational Administration & Supervision	9	4.4	12	4.6	11	3.3
Educational Media	--	--	10	3.8	5	1.5
Elementary Education, General	13	6.3	2	0.8	6	1.8
Middle Grades Education	--	--	1	0.4	--	--
Speech Correction	2	1.0	7	2.7	--	--
Student Personnel, Guidance & Counseling	10	4.9	15	5.7	29	8.8
Speech-Language Pathology & Audiology	--	--	--	--	30	9.1
TOTAL SCHOOL OF EDUCATION	46	22.4	57	21.8	93	28.1

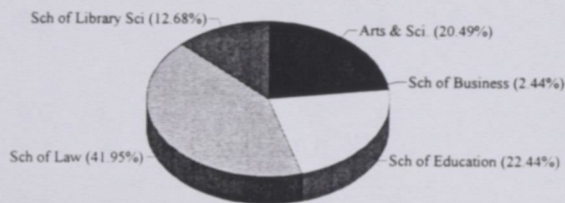
Degrees Conferred

Graduate by Field of Study (Continued)

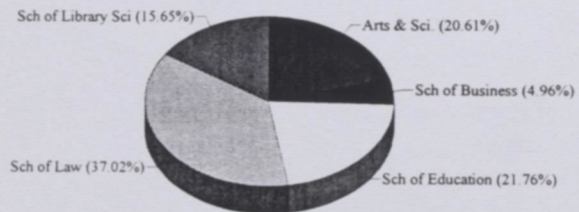
SCHOOL OF LAW	1987		1992		1997	
Juris Doctor's	86	42.0	97	37.0	85	25.7
SCHOOL OF LIBRARY & INFORMATION SCIENCES						
Library Science, General	26	12.7	41	15.6	76	23.0
Information Sciences & Systems	--	--	--	--	6	1.8
TOTAL SCH. OF LIBRARY & INFO. SCIENCES	26	12.7	41	15.6	82	24.8
TOTALS	205	100	262	100	331	100

SOURCE: Graduated Student Data Files, July 1, 1996 thru June 30, 1997

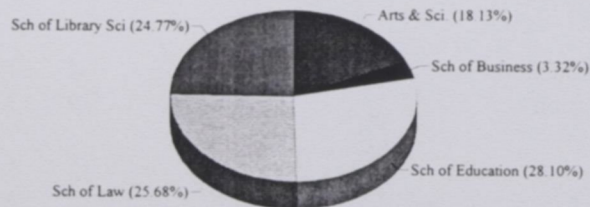
Degrees Conferred, 1987



Degrees Conferred, 1992



Degrees Conferred, 1997



Degrees Conferred

Characteristics of Graduated Students

		Black	White	Other	Total
College of Arts & Sciences					
Bachelors	Female	349	31	3	383
	Male	178	18	3	199
Masters	Female	31	6	1	38
	Male	16	4	2	22
Summary		574	59	9	642
School of Business					
Bachelors	Female	62	0	0	62
	Male	33	3	2	38
Masters	Female	3	0	0	3
	Male	5	2	1	8
Summary		103	5	3	111
School of Education					
Bachelors	Female	36	9	0	45
	Male	3	8	1	12
Masters	Female	31	48	1	80
	Male	9	4	0	13
Summary		79	69	2	150
School of Law					
Professional	Female	27	13	0	40
	Male	17	28	0	45
Summary		44	41	0	85
School of Library & Information Sciences					
Masters	Female	14	35	10	59
	Male	3	14	6	23
Summary		17	49	16	82

Source: Graduated Student Data Files, July 1, 1996 thru June 30, 1997

Credit Hours Generated

Undergraduate - Percentage Distribution

DISCIPLINE	1992-93 %	1993-94 %	1994-95 %	1995-96 %	1996-97 %	1997-98 %
Art	2.1	1.8	1.9	1.9	1.9	2.6
Biology	6.5	6.8	6.7	6.4	5.3	7.0
Chemistry	2.3	2.6	2.6	3.4	2.7	3.1
Computer & Information Science	--	--	--	--	--	1.0
Criminal Justice	3.1	3.3	3.2	3.8	3.9	3.3
Critical Foundation in Arts & Sciences (CFAS)*	--	--	--	23.2	33.0	--
Theatre	1.1	1.3	1.2	1.3	1.0	2.4
English	11.8	12.3	12.3	7.8	5.9	15.9
Environmental Sciences					0.0	0.1
Geography	2.0	1.9	2.0	1.8	1.2	2.1
Health Education	3.4	3.6	3.7	2.6	1.7	2.2
History	7.1	7.7	7.3	6.4	4.5	5.1
Human Sciences	2.7	2.7	3.0	4.9	5.5	8.8
Mathematics & Computer Science	10.5	9.8	9.4	10.2	8.8	8.8
Modern Foreign Languages	5.7	5.5	6.4	0.8	1.0	7.3
Music	2.7	2.7	2.5	2.2	1.5	2.4
Nursing	2.8	3.5	3.4	3.8	4.7	4.9
Orientation *	0.7	0.7	0.7	0.0	0.0	0.0
Philosophy	0.9	0.9	0.9	1.1	0.7	0.0
Physical Education	3.6	3.7	4.0	3.3	3.3	4.1
Physics	0.9	0.8	0.9	1.2	1.2	2.0
Political Science	6.6	5.6	5.6	6.5	5.7	6.8
Psychology	3.3	3.0	3.0	3.3	3.2	3.6
ROTC	0.1	0.1	0.1	0.2	0.2	0.1
Sociology	4.1	4.1	4.6	3.7	2.9	6.3
Total College of Arts & Sciences	83.9	84.4	85.4	84.3	83.5	84.5
School of Business	11.0	10.3	9.6	9.9	10.3	10.1
School of Education	5.0	5.3	5.0	5.8	6.2	5.4
TOTAL PERCENTAGES	100	100	100	100	100	100
TOTAL CREDIT HOURS PRODUCED	N=116,106	N=117,282	N=114,490	N=109,830	N=107,531	N=109,220

* Critical Foundation in Arts & Sciences (CFAS) and Orientation are not departments

SOURCE: Fall and Spring Credit Hours Tapes, Student Information System

**Philosophy was moved under the English Department.

NOTE: Includes Extension and Excludes 0 Hour Courses

Credit Hours Generated

Graduate - Percentage Distribution

DISCIPLINE	1991-92 %	1992-93 %	1993-94 %	1994-95 %	1995-96 %	1996-97 %
Biology	0.9	1.3	1.1	1.3	1.2	1.0
Chemistry	0.4	0.3	0.7	0.7	0.4	0.4
Criminal Justice	1.2	2.1	2.4	2.5	2.5	2.9
Geography	--	--	--	--	0.3	0.3
English	0.5	0.6	0.7	0.5	0.5	0.6
History	0.7	1.3	1.3	1.5	1.4	1.7
Human Sciences	1.1	2.0	0.6	1.0	1.0	1.1
Mathematics & Computer Science	0.3	0.6	0.4	0.3	0.1	0.2
Modern Foreign Languages	0.1	--	--	0.0	0.0	0.0
Music	0.1	0.1	0.0	0.2	0.2	0.2
Physical Education & Recreation	0.8	1.4	1.3	1.0	1.4	1.3
Public Administration	4.9	5.5	5.9	6.2	6.2	6.6
Psychology	2.7	2.9	4.0	3.8	3.5	3.6
Sociology	0.7	1.0	0.7	0.7	0.7	1.0
Total College of Arts & Sciences	14.1	19.2	19.1	19.6	19.5	20.9
School of Business	1.8	1.7	1.7	1.8	1.8	2.5
School of Education	24.0	20.2	23.1	25.0	23.3	20.1
School of Law	49.7	46.7	46.8	44.6	45.1	45.1
School of Library & Information Science	10.4	12.2	9.3	9.0	10.4	11.4
TOTAL PERCENTAGES	100	100	100	100	100	100
TOTAL CREDIT HOURS PRODUCED	N=17,058	N=17,042	N=17,043	N=18,842	N=19,222	N=20,716

SOURCE: Fall and Spring Credit Hours Tapes, Student Information System

Grades Assigned by School

Percentage Distribution by Course Level

FALL 1995	A	B	C	D	F	Total Number
Arts & Sciences	25.1	31.9	26.3	8.5	8.1	14,922
Lower	22.4	30.2	27.0	10.2	10.3	10,524
Upper	29.0	35.7	27.2	5.2	3.0	3,861
Grad.	50.8	39.1	8.2	0.0	1.9	537
Business	15.6	32.0	33.7	10.4	8.3	1,714
Lower	13.4	27.5	35.3	12.2	11.5	509
Upper	14.3	34.7	34.1	10.0	6.9	853
Grad.	68.6	25.5	5.9	0.0	0.0	51
Education	57.7	31.4	7.6	2.0	1.4	1,524
Lower	59.7	17.9	3.0	0.0	19.4	67
Upper	51.9	31.3	12.2	3.8	0.8	785
Grad.	64.3	32.9	2.5	0.0	0.3	672
Law	25.7	34.3	33.7	5.1	1.3	475
Grad.	25.8	34.3	33.6	5.1	1.3	473
Library Science	62.9	33.0	3.1	0.0	1.0	291
Upper	58.6	34.4	5.5	0.0	1.6	128
Grad.	66.3	32.0	1.2	0.0	0.6	163
SPRING 1996	A	B	C	D	F	Total Number
Arts & Sciences	28.2	30.2	24.4	8.3	8.9	14,214
Lower	24.0	27.5	26.5	10.1	12.0	8,927
Upper	33.1	34.6	22.5	5.7	4.1	4,814
Grad.	56.9	36.0	6.3	0.0	0.9	473
Business	15.7	31.6	35.2	9.4	8.1	1,757
Lower	16.1	25.0	35.8	12.4	10.6	564
Upper	14.1	33.9	36.3	8.4	7.3	1,131
Grad.	40.3	50.0	9.7	0.0	0.0	62
Education	62.3	25.9	8.9	1.7	1.2	1,814
Lower	29.7	39.1	15.6	4.7	10.9	64
Upper	56.5	26.0	13.5	2.7	1.3	1,053
Grad.	74.0	24.5	1.4	0.0	0.0	697
Law	23.8	37.5	34.8	3.6	0.3	610
Lower	0.0	50.0	50.0	0.0	0.0	4
Upper	100.0	0.0	0.0	0.0	0.0	1
Grad.	23.8	37.5	34.7	3.6	0.3	605
Library Science	66.1	33.6	0.4	0.0	0.0	274
Upper	62.0	37.2	0.9	0.0	0.0	113
Grad.	69.0	31.1	0.0	0.0	0.0	161

SOURCE: Fall and Spring Grade Tapes, Student Information System

School Profiles

College of Arts & Sciences

STUDENT INFORMATION

Applications and New Enrollment, Fall 1996

	Freshmen	Transfers	Graduate
Applied	1,936	481	233
Accepted	1,302	478	205
Enrolled	649	250	135

Degree-Seeking Student Enrollment, Fall 1996

	Black	White	Other	Total
Undergraduate	3,196	199	44	3,439
Graduate	373	85	11	469
TOTAL	3,569	284	55	3,908

Degrees Awarded, 1995 - 96

	Black	White	Other	Total
Undergraduate	481	49	9	539
Graduate	50	23	3	76
TOTAL	531	72	12	615

Total Credit Hours Generated

	1995-96		1996-97	
	Hours	# of Classes	Hours	# of Classes
Undergraduate	92,614	1,647	89,823	2,144
Graduate	3,747	214	4,334	334
TOTAL	96,361	1,861	94,157	2,478

FACULTY/ADMINISTRATIVE INFORMATION

Faculty/EPA-Headcount, Fall 1996

	Full-Time	Part-Time	Total
Professor	34	--	34
Associate	56		56
Assistant	60	--	60
Instructor	8	--	8
Other Faculty	53	88	141
TOTAL	211	88	299

Faculty Statistics, Fall 1996*

	#	Mean Age	Mean Salary
Professor	33	54	56,611
Associate	46	53	46,500
Assistant	19	47	40,390
Instructor	--	--	--

Budgeted FTE 215

Instructional Budget for Selected Areas: State Appropriations, 1996-97

Supplies	1,572
Equipment	111,762
Current Services	36,809
Instructional Personnel	9,633,538
TOTAL	\$9,783,681

* Mean age & mean salary data are computed on all full-time faculty.

Undecided students are omitted from the applications and enrollment figures.

School Profiles

Business

STUDENT INFORMATION

Applications and New Enrollment, Fall 1996

	Freshmen	Transfers	Graduate
Applied	135	--	38
Accepted	135	--	25
Enrolled	56	--	17

Degree-Seeking Student Enrollment, Fall 1996

	Black	White	Other	Total
Undergraduate	308	2	4	314
Graduate	28	4	4	36
TOTAL	336	6	8	350

Degrees Awarded, 1995 - 96

	Black	White	Other	Total
Undergraduate	97	2	--	99
Graduate	7	2	--	9
TOTAL	104	4	--	108

Total Credit Hours Generated

	1995-96		1996-97	
	Hours	# of Classes	Hours	# of Classes
Undergraduate	10,839	169	11,041	164
Graduate	345	14	522	16
TOTAL	11,184	183	11,563	180

FACULTY/ADMINISTRATIVE INFORMATION

Faculty/EPA-Headcount, Fall 1996

	Full-Time	Part-Time	Total
Professor	8	--	8
Associate	9	--	9
Assistant	10	--	10
Instructor	2	--	2
Other Faculty	7	7	14
TOTAL	36	7	43

Faculty Statistics, Fall 1996*

	#	Mean Age	Mean Salary
Professor	8	54	73,930
Associate	7	50	60,077
Assistant	6	57	54,907
Instructor	1	--	--

Budgeted FTE 36

Instructional Budget for Selected Areas: State Appropriations, 1996-97

Supplies	11,000
Equipment	24,000
Current Services	28,229
Instructional Personnel	2,191,422
TOTAL	\$2,254,651

* Mean age & mean salary data are computed on all full-time faculty.

School Profiles

Education

STUDENT INFORMATION

Applications and New Enrollment, Fall 1996*

	Freshmen	Transfers	Graduate
Applied	1	2	25
Accepted	1	2	25
Enrolled	1	2	20

Degree-Seeking Student Enrollment, Fall 1996

	Black	White	Other	Total
Undergraduate	56	25	1	82
Graduate	134	64	2	200
TOTAL	190	89	3	282

Degrees Awarded, 1995 - 96

	Black	White	Other	Total
Undergraduate	28	2	1	31
Graduate	60	30	-	90
TOTAL	88	32	1	121

Total Credit Hours Generated

	1995-96		1996-97	
	Hours	# of Classes	Hours	# of Classes
Undergraduate	6,377	136	6,667	160
Graduate	4,476	146	4,155	173
TOTAL	10,853	282	10,822	333

* Freshmen are not directly admitted into the School of Education.

** Mean age & mean salary data are computed on all full-time faculty.

FACULTY/ADMINISTRATIVE INFORMATION

Faculty/EPA-Headcount, Fall 1996

	Full-Time	Part-Time	Total
Professor	6		6
Associate	12	--	12
Assistant	11	--	11
Instructor	4	--	4
Other Faculty	5	6	11
TOTAL	38	6	44

Faculty Statistics, Fall 1996**

	#	Mean Age	Mean Salary
Professor	5	58	52,510
Associate	5	47	51,124
Assistant	--	--	--
Instructor	--	--	--

Budgeted FTE 35

Instructional Budget for Selected Areas: State Appropriations, 1996-97

Supplies	5,650
Equipment	0
Current Services	11,820
Instructional Personnel	1,775,372
TOTAL	\$1,792,842

School Profiles

Law

STUDENT INFORMATION

Applications and New Enrollment, Fall 1996

	Graduate	Transfers
Applied	1,274	
Accepted	279	
Enrolled	138	1

Degree-Seeking Student Enrollment, Fall 1996

Black	176
White	163
Other	13
TOTAL	352

Degrees Awarded, 1995 - 96

Black	51
White	42
Other	1
TOTAL	94

Total Credit Hours Generated

1995-96		1996-97	
Hours	# of Classes	Hours	# of Classes
8,662	108	9,353	117

FACULTY/ADMINISTRATIVE INFORMATION

Faculty/EPA-Headcount, Fall 1996

	Full-Time	Part-Time	Total
Professor	9	--	9
Associate	5	--	5
Assistant	2	--	2
Instructor	--	--	0
Other Faculty	3	7	10
TOTAL	19	7	26

Faculty Statistics, Fall 1996 *

	# Tenured	Mean Age	Mean Salary
Professor	9	49	87,914
Associate	5	44	80,429
Assistant	--	--	--
Instructor	--	--	--

Budgeted FTE 19

Instructional Budget for Selected Areas: State Appropriations, 1996-97

Supplies	2,000
Equipment	20,500
Current Services	22,325
Instructional Personnel	1,685,052
TOTAL	\$1,729,877

* Mean age & mean salary data are computed on all full-time faculty.

School Profiles

Library and Information Sciences

STUDENT INFORMATION

Applications and New Enrollment, Fall 1996

Applied	70
Accepted	70
Enrolled	52

Degree-Seeking Student Enrollment, Fall 1996

Black	44
White	130
Other	18
TOTAL	192

Degrees Awarded, 1995 - 96

Black	11
White	36
Other	5
TOTAL	52

Total Credit Hours Generated

1995-96		1996-97	
Hours	# of Classes	Hours	# of Classes
1,992	61	2,352	76

FACULTY/ADMINISTRATIVE INFORMATION

Faculty/EPA-Headcount, Fall 1996

	Full-Time	Part-Time	Total
Professor	4	--	4
Associate	1	--	1
Assistant	2	--	2
Instructor	--	--	0
Other Faculty	2	6	8
TOTAL	9	6	15

Faculty Statistics, Fall 1996 *

	#	Mean Age	Mean Salary
Professor	4	55	51,477
Associate	1	--	--
Assistant	1	--	--
Instructor	--	--	--

Budgeted FTE 8

Instructional Budget for Selected Areas: State Appropriations, 1996-97

Supplies	3,500
Equipment	5,000
Current Services	5,148
Instructional Personnel	433,239
TOTAL	\$446,887

* Mean age & mean salary data are computed on all full-time faculty.

Persistence

Students Enrolled, Graduated, Suspended, and Not Enrolled, One Year After Initial Entry--Percentage Distribution

CLASS	1988	1989	1990	1991	1992	1993	1994	1995
FRESHMAN	%	%	%	%	%	%	%	%
Enrolled	83	83	82	83	82	77	77	71
Graduated	0	0	0	0	0	0	0	0
Not Enrolled	17	17	18	17	18	23	23	29
	N=764	N=999	N=794	N=559	N=784	N=810	N=767	N=553
LOWER LEVEL TRANSFER	%	%	%	%	%	%	%	%
Enrolled	60	62	67	70	65	64	71	63
Graduated	0	0	<1	0	7	0	1	1
Not Enrolled	40	38	33	30	28	36	28	36
	N=154	N=224	N=226	N=192	N=202	N=189	N=301	N=227
UPPER LEVEL TRANSFER	%	%	%	%	%	%	%	%
Enrolled	59	83	81	79	57	17	25	38
Graduated	3	17	3	1	4	33	38	29
Not Enrolled	38	0	16	20	39	50	37	33
	N=59	N=6	N=32	N=75	N=101	N=18	N=32	N=21
FIRST PROFESSIONAL	%	%	%	%	%	%	%	%
Enrolled	76	76	85	79	85	86	88	85
Graduated	0	0	<1	2	0	0	0	0
Not Enrolled	24	24	15	19	15	14	12	15
	N=91	N=143	N=127	N=91	N=103	N=112	N=109	N=119
MASTERS	%	%	%	%	%	%	%	%
Enrolled	63	62	68	67	66	58	69	68
Graduated	5	7	4	5	6	2	1	3
Not Enrolled	32	31	28	28	28	40	30	29
	N=220	N=138	N=212	N=173	N=179	N=141	N=196	N=208

Persistence

A Comparison of Full-Time Entering Freshmen Enrolled At NCCU, Predominantly Black Institutions (PBI), and in the UNC System

	1988	1989	1990	1991	1992	1993	1994	1995
AFTER ONE YEAR								
NCCU	78%	77%	79%	83%	79%	77%	78%	73%
PBI	76%	75%	76%	76%	77%	75%	73%	74%
UNC SYSTEM	83%	83%	82%	83%	82%	82%	81%	81%
AFTER TWO YEARS								
NCCU	65%	65%	70%	70%	63%	67%	65%	
PBI	62%	62%	66%	65%	64%	62%	60%	
UNC SYSTEM	72%	71%	72%	71%	70%	70%	68%	
AFTER THREE YEARS								
NCCU	58%	57%	61%	60%	56%	61%		
PBI	56%	55%	58%	58%	57%	55%		
UNC SYSTEM	67%	65%	65%	66%	64%	64%		

Persistence

Graduation Percentages of Full-Time Entering Freshmen Enrolled at NCCU, Predominantly Black Institutions (PBI), and in the UNC System

COHORT		MEAN SAT	AFTER 4 YEARS	AFTER 5 YEARS	AFTER 6 YEARS	AFTER 7 YEARS
1983	NCCU	639	13%	27%	32%	34%
	PBI		13%	27%	32%	34%
	UNC SYSTEM		26%	46%	51%	53%
1984	NCCU	702	12%	27%	33%	36%
	PBI		14%	27%	32%	34%
	UNC SYSTEM		26%	46%	52%	54%
1985	NCCU	688	14%	27%	32%	35%
	PBI		13%	25%	30%	32%
	UNC SYSTEM		27%	47%	53%	55%
1986	NCCU	695	14%	27%	33%	37%
	PBI		12%	27%	33%	36%
	UNC SYSTEM		26%	48%	53%	55%
1987	NCCU	717	16%	32%	38%	40%
	PBI		17%	33%	39%	41%
	UNC SYSTEM		28%	51%	56%	58%
1988	NCCU	732	16%	33%	40%	42%
	PBI		17%	35%	40%	43%
	UNC SYSTEM		29%	53%	59%	60%
1989	NCCU	720	15%	33%	39%	42%
	PBI		17%	33%	40%	42%
	UNC SYSTEM		29%	52%	57%	59%
1990	NCCU	849	18%	37%	45%	
	PBI		19%	37%	43%	
	UNC SYSTEM		29%	52%	58%	
1991	NCCU	818	17%	37%		
	PBI		20%	39%		
	UNC SYSTEM		29%	52%		
1992	NCCU	912	18%			
	PBI		21%			
	UNC SYSTEM		29%			

Facts About Students

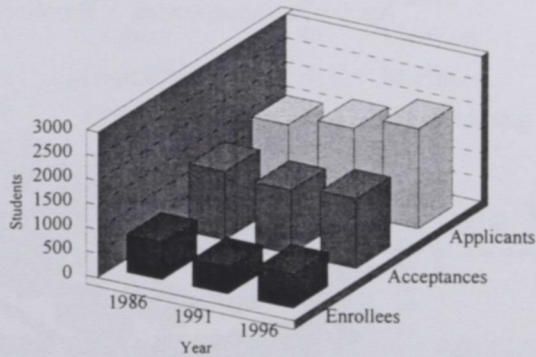
Admissions

Applicants, Acceptances, and Enrollees*

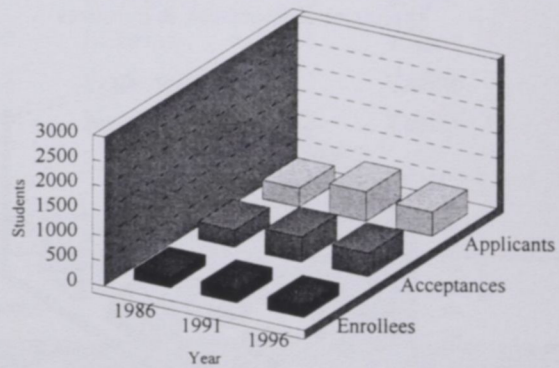
Freshmen & Transfers

NEW STUDENTS	IN-STATE					OUT-OF-STATE					TOTALS				
	MEN	%	WOMEN	%	TOTAL	MEN	%	WOMEN	%	TOTAL	TOTAL MEN	TOTAL WOMEN	TOTAL %	TOTAL	
FIRST-TIME FRESHMEN															
Applicants	486		872		1,358	257		456		713	743	1,328	2,071		
Acceptances	357	73%	681	78%	1,038	140	54%	260	57%	400	497	941	1,438	69%	
Enrollees	206	58%	378	56%	584	38	27%	84	32%	122	244	462	706	49%	
NEW UNDERGRADUATE TRANSFERS															
Applicants	133		265		398	40		44		84	173	309	482		
Acceptances	131	98%	265	100%	396	39	98%	44	100%	83	170	309	479	99%	
Enrollees	73	56%	144	54%	217	15	38%	17	39%	32	88	161	249	52%	

COMPARISON OF FRESHMEN:
Applicants, Acceptances, & Enrollees



COMPARISON OF TRANSFERS:
Applicants, Acceptances, & Enrollees



Freshmen	1986	1991	1996
Applicants	1,554	1,773	2,071
Acceptances	1,414	1,320	1,438
Enrollees	778	559	706

Transfers	1986	1991	1996
Applicants	374	594	482
Acceptances	350	504	479
Enrollees	221	267	249

*Excludes Specials

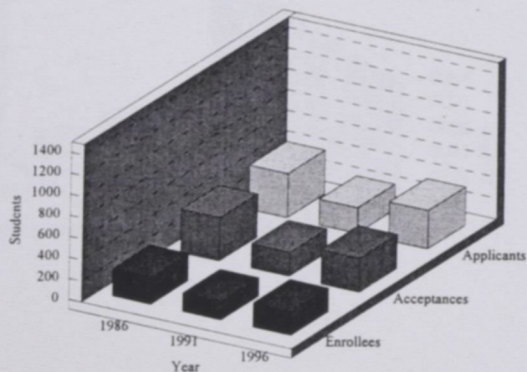
SOURCE: OCR 22KB1-Applications, Acceptances, and Actual Enrollment

Applicants, Acceptances, and Enrollees*

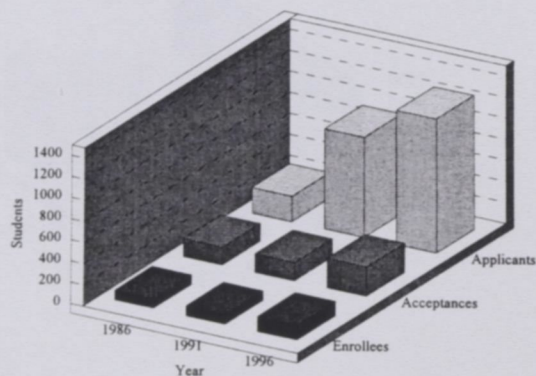
Graduate & First-Professional

NEW STUDENTS	IN - STATE					OUT - OF - STATE					TOTALS			
	MEN	%	WOMEN	%	TOTAL	MEN	%	WOMEN	%	TOTAL	TOTAL MEN	TOTAL WOMEN	TOTAL	%
GRADUATE STUDENTS														
Applicants	86		213		299	26		42		68	112	255	367	
Acceptances	76	88%	195	92%	271	21	81%	33	79%	54	97	228	325	89%
Enrollees	63	83%	149	76%	212	5	24%	11	33%	16	68	160	228	70%
FIRST PROFESSIONAL STUDENTS														
Applicants	314		267		581	356		337		693	670	604	1,274	
Acceptances	102	32%	96	36%	198	31	9%	50	15%	81	133	146	279	22%
Enrollees	64	63%	56	58%	120	9	29%	10	20%	19	73	66	139	50%

COMPARISON OF GRADUATE STUDENTS
Applicants, Acceptances, & Enrollees



COMPARISON OF FIRST PROFESSIONAL
Applicants, Acceptances, & Enrollees



Graduate	1986	1991	1996
Applicants	423	246	367
Acceptances	413	231	325
Enrollees	257	174	228

First Professional	1986	1991	1996
Applicants	241	950	1,274
Acceptances	170	173	279
Enrollees	93	91	139

*Excludes Specials

SOURCE: OCR 22KB1-Applications, Acceptances, and Actual Enrollment

Geographic Origin of First-Time Freshmen

By North Carolina County

COUNTY	#	COUNTY	#	COUNTY	#	COUNTY	#	COUNTY	#
Alamance	9	Chowan	2	Guilford	30	Mitchell	0	Rutherford	0
Alexander	0	Clay	0	Halifax	12	Montgomery	0	Sampson	6
Alleghany	0	Cleveland	2	Harnett	1	Moore	3	Scotland	10
Anson	3	Columbus	6	Haywood	0	Nash	9	Stanley	2
Ashe	0	Craven	4	Henderson	2	New Hanover	11	Stokes	0
Avery	0	Cumberland	18	Hertford	4	Northampton	1	Surry	0
Beaufort	4	Currituck	0	Hoke	6	Onslow	8	Swain	1
Bertie	5	Dare	0	Hyde	1	Orange	4	Transylvania	0
Bladen	7	Davidson	3	Iredell	0	Pamlico	3	Tyrrell	3
Brunswick	4	Davie	0	Jackson	0	Pasquotank	5	Union	2
Buncombe	1	Duplin	7	Johnston	0	Pender	3	Vance	10
Burke	0	Durham	91	Jones	5	Perquimans	0	Wake	74
Cabarrus	2	Edgecombe	15	Lee	2	Person	8	Warren	5
Caldwell	1	Forsyth	36	Lenoir	3	Pitt	8	Washington	3
Camden	0	Franklin	4	Lincoln	1	Polk	0	Watauga	0
Carteret	1	Gaston	7	McDowell	0	Randolph	1	Wayne	17
Caswell	3	Gates	2	Macon	0	Richmond	5	Wilkes	0
Catawba	0	Graham	0	Madison	0	Robeson	6	Wilson	17
Chatham	3	Granville	4	Martin	3	Rockingham	2	Yadkin	0
Cherokee	0	Greene	2	Mecklenburg	40	Rowan	1	Yancey	0
								TOTAL	584

Geographic Origin of First-Time Freshmen

By State

State	#	State	#	State	#	State	#	State	#
Alabama	0	Hawaii	0	Michigan	0	North Carolina	584	Utah	0
Alaska	0	Idaho	0	Minnesota	0	North Dakota	0	Vermont	0
Arizona	0	Illinois	0	Mississippi	0	Ohio	7	Virginia	22
Arkansas	0	Indiana	0	Missouri	0	Oklahoma	0	Washington	0
California	1	Iowa	0	Montana	0	Oregon	0	West Virginia	0
Colorado	1	Kansas	0	Nebraska	0	Pennsylvania	2	Wisconsin	0
Connecticut	1	Kentucky	0	Nevada	0	Rhode Island	0	Wyoming	0
Delaware	3	Louisiana	0	New Hampsh	0	South Carolina	2	U.S. Territories	0
DC	9	Maine	0	New Jersey	15	South Dakota	0	Foreign Countries	3
Florida	1	Maryland	30	New Mexico	0	Tennessee	0	Unknown	0
Georgia	3	Massachusetts	5	New York	17	Texas	0		
								TOTAL	706

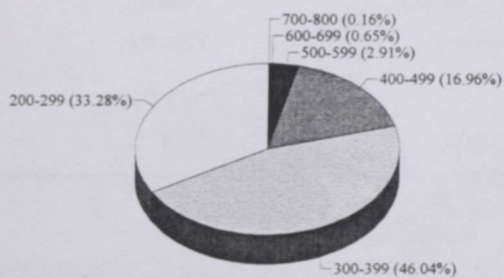
Source: IPEDS EF1 Residence of First-Time Students, Fall 1996

Distribution of SAT Scores of First-Time Freshmen

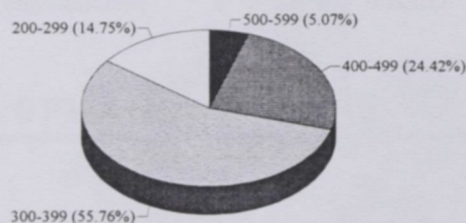
Verbal Scores

SAT Verbal	1986	1991	1996
	N	N	N
700-800	1	--	1
600-699	4	--	27
500-599	18	22	149
400-499	105	106	425
300-399	285	242	89
200-299	206	64	--
Total Reporting	619	434	691
Not Available	159	125	15
Total Students	778	559	706

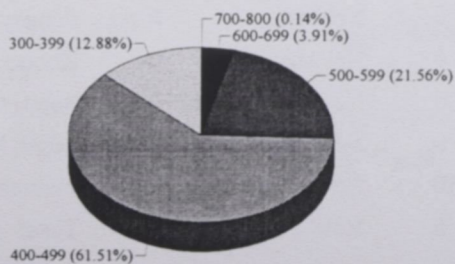
Verbal SAT Scores, 1986



Verbal SAT Scores, 1991



Verbal SAT Scores, 1996

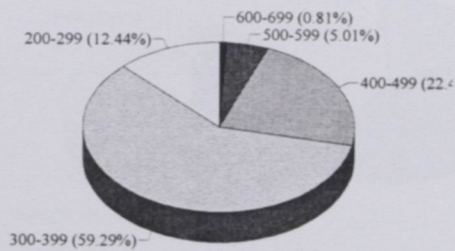


Distribution of SAT Scores of First-Time Freshmen

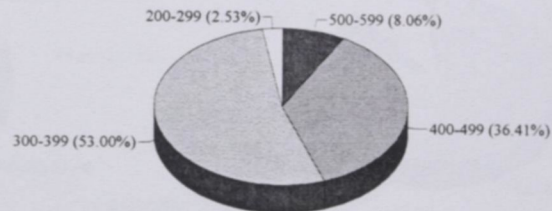
Math Scores

	1986	1991	1996
SAT Mathematical Scores	N	N	N
700-800	--	--	--
600-699	5	--	9
500-599	31	35	149
400-499	139	158	413
300-399	367	230	119
200-299	77	11	1
Total Reporting	619	434	691
Not Available	159	125	15
Total Students	778	559	706

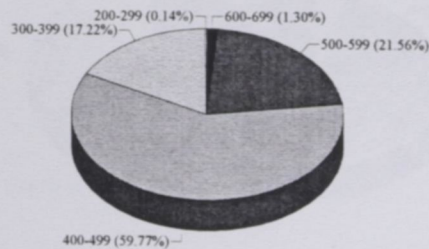
Math SAT Scores, 1986



Math SAT Scores, 1991



Math SAT Scores, 1996

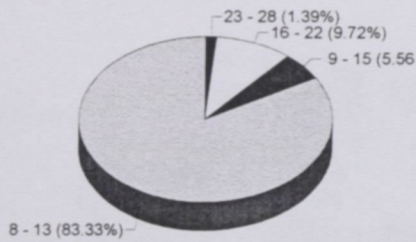


Distribution of ACT Scores of First-Time Freshmen

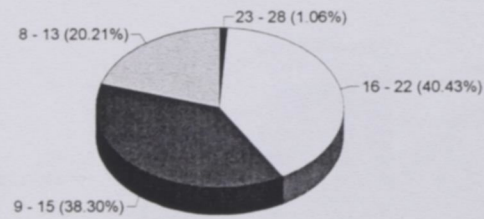
ACT Scores

	1986	1991	1996
ACT	N	N	N
29 - 36	--	--	--
23 - 28	1	1	12
16 - 22	7	38	116
9 - 15	4	36	26
8 - 13	60	19	6
Total Reporting	72	94	160
Not Available	701	465	546
Total Students	773	559	706

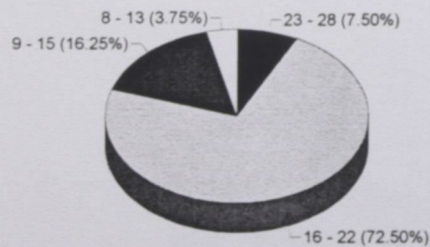
ACT Scores, 1986



ACT Scores, 1991



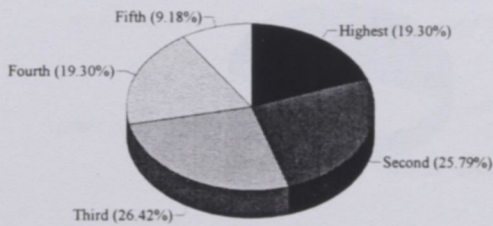
ACT Scores, 1996



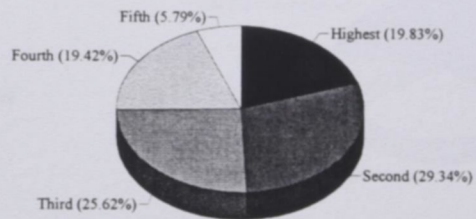
High School Class Rank of Entering Freshmen

Quintiles	1986	1991	1996
Highest	122	96	116
Second	163	142	162
Third	167	124	150
Fourth	122	94	140
Fifth	58	28	74
Total Reporting	632	484	642
Not Available	146	75	64
TOTAL	778	559	706

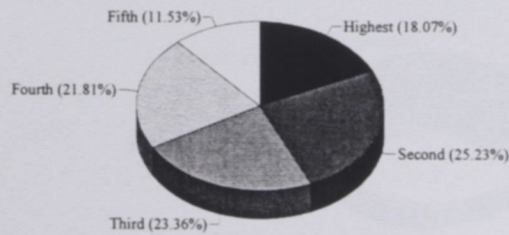
Class Rank, 1986



Class Rank, 1991



Class Rank, 1996

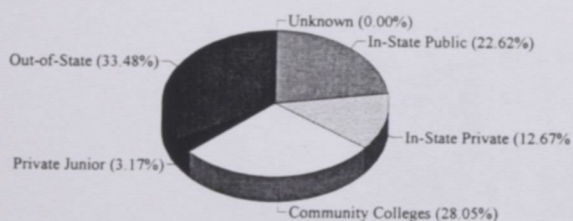


SOURCE: NCHED A-4 First-Time Freshman High School Rank

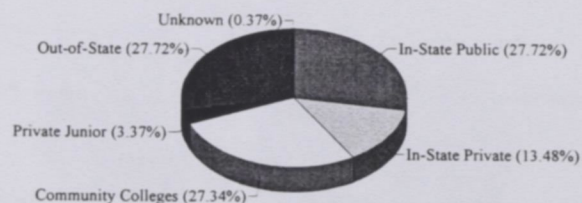
Undergraduate Transfers

TRANSFER INSTITUTION	1986	1991	1996
In-State Public Senior Institutions	50	74	52
In-State Private Senior Institutions	28	36	24
In-State Public Community Colleges & Technical Institutes	62	73	92
In-State Private Junior Colleges	7	9	1
Out-of-State Institutions	74	74	80
Unknown (In-State)			
Unknown (Out-of-State)		1	
TOTALS	221	267	249

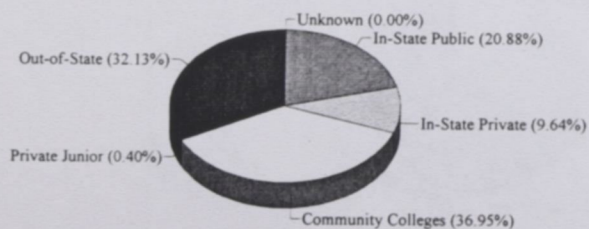
Undergraduate Transfers
1986



Undergraduate Transfers
1991



Undergraduate Transfers
1996



SOURCE: NCHED A-1.2 New Undergraduate Transfer Students

Enrollment

General Characteristics of Students

Classification, Full-Time/Part-Time Status, & Sex

CHARACTERISTICS	MEN	%	WOMEN	%	TOTAL	%
UNDERGRADUATE						
FRESHMAN	418	7.4	698	12.3	1,116	19.7
Full-Time	378		625		1,003	
Part-Time	40		73		113	
SOPHOMORE	317	5.6	618	10.9	935	16.5
Full-Time	275		523		798	
Part-Time	42		95		137	
JUNIOR	310	5.5	525	9.3	835	14.7
Full-Time	266		447		713	
Part-Time	44		78		122	
SENIOR	388	6.9	736	13.0	1,124	19.8
Full-Time	262		534		796	
Part-Time	126		202		328	
SPECIAL	65	1.1	50	0.9	115	2.0
Full-Time	23		17		40	
Part-Time	42		33		75	
UNDERGRADUATE TOTAL	1,498	26.4	2,627	46.4	4,125	72.8
Full-Time	1,204		2,146		3,350	
Part-Time	294		481		775	
FTE	1,359		2,393		3,752	
GRADUATE & FIRST PROFESSIONAL						
MASTER'S	255	4.5	717	12.7	972	17.2
Full-Time	71		219		290	
Part-Time	184		498		682	
SPECIAL	62	1.1	123	2.2	185	3.3
Full-Time	7		13		20	
Part-Time	55		110		165	
FTE	217		582		799	
LAW	172	3.0	210	3.7	382	6.7
Full-Time	170		209		379	
Part-Time	2		1		3	
FTE	171		209		380	
GRAD. & PROF. TOTALS	489	8.6	1,050	18.5	1,539	27
Full-Time	248		441		689	
Part-Time	241		609		850	
FTE	388		791		1,179	
TOTALS	1,987	35.1	3,677	64.9	5,664	100
Full-Time	1,452		2,587		4,039	
Part-Time	535		1,090		1,625	
TOTAL FTE	1,747		3,184		4,931	

SOURCE: NCHED A1.1 Resident Credit Enrollment, Fall 1997

General Characteristics of Students

Classification, Race, & Sex

Classification	Black		White		OTHER		Total		Totals
	Male	Female	Male	Female	Male	Female	Male	Female	
Freshman	388	653	17	21	13	24	418	698	1,116
Sophomore	293	590	13	22	11	6	317	618	935
Junior	287	479	18	35	5	11	310	525	835
Senior	342	652	39	69	7	15	388	736	1,124
Special Undergraduate	47	42	15	5	3	3	65	50	115
Undergraduate Total	1,357	2,416	102	152	39	59	1,498	2,627	4,125
Graduate	182	479	63	213	10	25	255	717	972
Special Graduate	44	68	15	51	3	4	62	123	185
Graduate Total	226	547	78	264	13	29	317	840	1,157
First Professional	70	111	94	86	8	13	172	210	382
First Professional Total	70	111	94	86	8	13	172	210	382
GRAND TOTALS	1,653	3,074	274	502	60	101	1,987	3,677	5,664

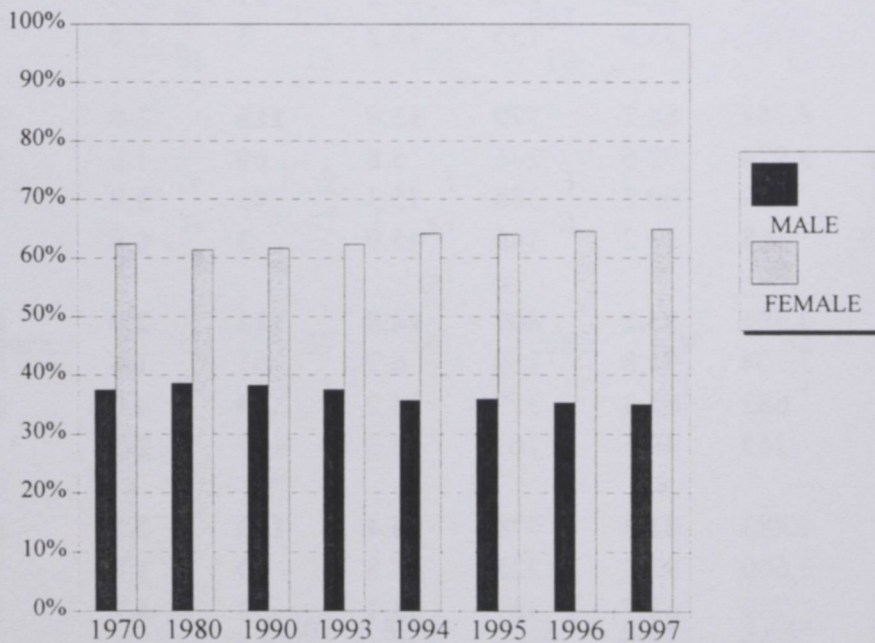
SOURCE: Student Data File, Fall 1997

General Characteristics of Students

Distribution by Sex - Historical Comparison

Year	Male N	Female N	Total Enrollment
1970	1,182	1,967	3,149
1980	1,897	3,013	4,910
1990	2,099	3,382	5,481
1993	2,119	3,516	5,635
1994	2,022	3,633	5,655
1995	1,966	3,504	5,470
1996	1,912	3,488	5,400
1997	1,987	3,677	5,664

Enrollment by Sex
1970 - 1997



SOURCE: NCHED A-1.1 Resident Credit Enrollment

General Characteristics of Students

Distribution by Race, 1990-1997

YEAR	BLACK	%	WHITE	%	OTHER	%	TOTAL
1990	4,564	83.3	829	15.1	88	1.6	5,481
1991	4,487	83.3	801	14.9	97	1.8	5,385
1992	4,747	83.8	806	14.2	114	2.0	5,667
Undergraduate	4,024	92.7	250	5.8	65	1.5	4,339
Graduate	577	56.2	402	39.1	48	4.7	1,027
Professional	146	48.5	154	51.2	1	0.3	301
1993	4,761	84.5	789	14.0	85	1.5	5,635
Undergraduate	4,012	92.9	255	5.9	51	1.2	4,318
Graduate	588	57.8	399	39.2	31	3.0	1,018
Professional	161	53.8	135	45.2	3	1.0	299
1994	4,761	84.2	779	13.8	115	2.0	5,655
Undergraduate	3,924	92.6	246	5.8	69	1.6	4,239
Graduate	669	60.8	388	35.3	43	3.9	1,100
Professional	168	53.2	145	45.9	3	0.9	316
1995	4,551	83.2	807	14.8	112	2.0	5,470
Undergraduate	3,704	91.8	269	6.7	61	1.5	4,034
Graduate	682	61.8	377	34.2	44	4.0	1,103
Professional	165	49.5	161	48.3	7	2.1	333
1996	4,483	83.0	778	14.4	139	2.6	5,400
Undergraduate	3,600	92.4	228	5.8	70	1.8	3,898
Graduate	709	61.7	387	33.7	54	4.7	1,150
Professional	174	49.4	163	46.3	15	4.3	352
1997	4,727	83.5	776	13.7	161	2.8	5,664
Undergraduate	3,773	91.5	254	6.2	98	2.4	4,125
Graduate	773	66.8	342	29.6	42	3.6	1,157
Professional	181	47.4	180	47.1	21	5.5	382

SOURCE: OE Form 23-2.3 Fall Enrollment and Compliance Report of Institutions of Higher Education

Geographic Origin

By Region, 1990 - 1997

GEOGRAPHIC ORIGIN		1990	1991	1992	1993	1994	1995	1996	1997
Durham County	N	1,169	1,190	1,270	1,199	1,198	1,241	1,228	1,305
	%	21	22	22	21	21	23	23	23
Adjacent Counties*	N	922	880	960	987	1,038	1,058	1,070	1,143
	%	16	16	17	18	18	19	20	20
Other N.C. Counties	N	2,630	2,616	2,721	2,665	2,700	2,509	2,480	2,583
	%	48	49	48	47	48	46	46	46
Out-of-State	N	721	655	657	723	665	619	572	575
	%	13	12	12	13	12	11	10	10
U.S. Territories	N	2	3	3	2		2	2	1
	%	<1	<1	<1	<1		<1	<1	<1
Foreign Countries	N	37	41	56	59	54	41	48	57
	%	1	1	1	1	1	1	1	1
Unknown	N								
	%								
TOTALS		5,481	5,385	5,667	5,635	5,655	5,470	5,400	5,664

* Adjacent Counties: Chatham, Granville, Orange, Person, Wake

SOURCE: NCHED A-1.3 Home Base of Students, Fall 1997

Geographic Origin

By North Carolina County

COUNTY	#	COUNTY	#	COUNTY	#	COUNTY	#	COUNTY	#	
Alamance	66	Chowan	9	Guilford	131	Mitchell	1	Rutherford	4	
Alexander	1	Clay	0	Halifax	84	Montgomery	8	Sampson	31	
Alleghany	4	Cleveland	24	Harnett	29	Moore	33	Scotland	36	
Anson	8	Columbus	36	Haywood	1	Nash	64	Stanley	10	
Ashe	0	Craven	36	Henderson	6	New Hanover	80	Stokes	2	
Avery	0	Cumberland	189	Hertford	25	Northampton	36	Surry	6	
Beaufort	20	Currituck	2	Hoke	16	Onslow	50	Swain	1	
Bertie	25	Dare	3	Hyde	1	Orange	207	Transylvania	2	
Bladen	21	Davidson	28	Iredell	11	Pamlico	6	Tyrrell	6	
Brunswick	27	Davie	2	Jackson	1	Pasquotank	27	Union	19	
Buncombe	22	Duplin	40	Johnston	30	Pender	20	Vance	78	
Burke	5	Durham	1305	Jones	8	Perquimans	3	Wake	728	
Cabarrus	18	Edgecombe	89	Lee	28	Person	78	Warren	48	
Caldwell	2	Forsyth	130	Lenoir	46	Pitt	62	Washington	16	
Camden	0	Franklin	37	Lincoln	4	Polk	1	Watauga	2	
Carteret	10	Gaston	36	McDowell	1	Randolph	13	Wayne	100	
Caswell	18	Gates	10	Macon	0	Richmond	25	Wilkes	4	
Catawba	14	Graham	2	Madison	7	Robeson	48	Wilson	57	
Chatham	42	Granville	88	Martin	33	Rockingham	17	Yadkin	1	
Cherokee	0	Greene	14	Mecklenburg	227	Rowan	29	Yancey	0	
									TOTAL	5031

Geographic Origin

By State

STATE	#	STATE	#	STATE	#	STATE	#	STATE	#	
Alabama	3	Hawaii	1	Michigan	12	North Carolina	5031	Utah	0	
Alaska	1	Idaho	0	Minnesota	0	North Dakota	0	Vermont	1	
Arizona	1	Illinois	3	Mississippi	1	Ohio	16	Virginia	76	
Arkansas	2	Indiana	6	Missouri	4	Oklahoma	1	Washington	2	
California	7	Iowa	2	Montana	1	Oregon	0	West Virginia	1	
Colorado	3	Kansas	2	Nebraska	2	Pennsylvania	23	Wisconsin	0	
Connecticut	14	Kentucky	2	Nevada	1	Rhode Island	0	Wyoming	0	
Delaware	6	Louisiana	2	New Hampshire	0	South Carolina	26	U.S. Territories	1	
DC	45	Maine	0	New Jersey	46	South Dakota	0	Foreign Countries	57	
Florida	19	Maryland	83	New Mexico	1	Tennessee	2	Unknown	0	
Georgia	29	Massachusetts	14	New York	112	Texas	2			
									TOTAL	5664

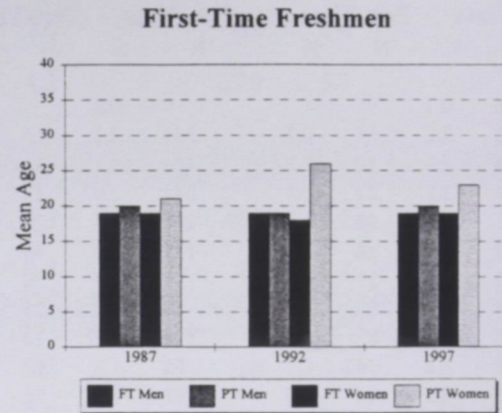
SOURCE: NCHED A-1.3 Home Base of Students, Fall 1997

Age Characteristics

Average Age, 1987 - 1997

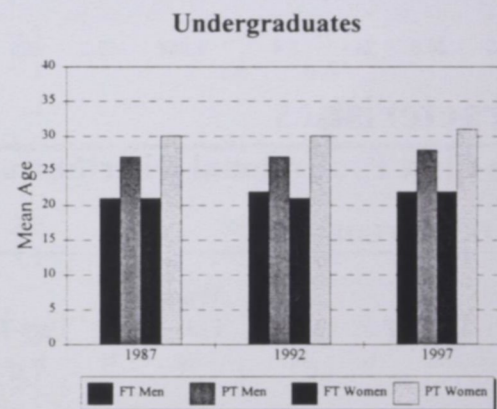
First-Time Freshmen

Year	MEN		WOMEN		TOTAL		Total Means
	Full-Time	Part-Time	Full-Time	Part-Time	Full-Time	Part-Time	
1987	19	20	19	21	19	20	19
1988	18	21	18	25	19	23	19
1989	18	21	18	21	18	21	18
1990	18	23	18	24	19	24	19
1991	19	24	18	25	19	25	19
1992	19	19	18	26	19	24	19
1993	19	24	18	30	19	25	19
1994	19	24	19	25	19	25	19
1995	19	28	19	28	19	28	20
1996	19	19	18	22	18	21	19
1997	19	20	19	23	19	22	19



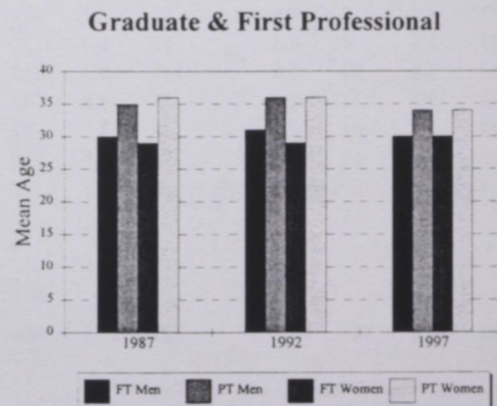
Undergraduates

YEAR	MEN		WOMEN		TOTAL		Total Means
	Full-Time	Part-Time	Full-Time	Part-Time	Full-Time	Part-Time	
1987	21	27	21	30	21	29	23
1988	21	28	21	30	21	29	23
1989	20	27	20	29	20	28	21
1990	21	28	21	30	21	29	23
1991	22	28	21	30	22	29	23
1992	22	27	21	30	22	29	23
1993	22	27	21	31	22	29	23
1994	22	29	22	31	22	30	24
1995	22	29	22	32	22	31	24
1996	22	29	22	31	22	31	24
1997	22	28	22	31	22	30	24



Graduate & First Professionals

YEAR	MEN		WOMEN		TOTAL		Total Means
	Full-Time	Part-Time	Full-Time	Part-Time	Full-Time	Part-Time	
1987	30	35	29	36	30	36	34
1988	30	35	30	35	30	35	34
1989	29	34	30	35	30	35	33
1990	31	36	31	35	31	35	34
1991	30	35	30	36	30	36	34
1992	31	36	29	36	30	36	34
1993	30	35	29	35	29	36	32
1994	30	34	29	35	29	35	32
1995	30	33	29	35	30	34	32
1996	30	35	29	35	30	34	32
1997	30	34	30	34	30	34	32



SOURCE: Student Data Files

Age Characteristics

Undergraduate Distribution

AGE	IN-STATE STUDENTS								OUT-OF-STATE STUDENTS							
	Men				Women				Men				Women			
	Full-Time		Part-Time		Full-Time		Part-Time		Full-Time		Part-Time		Full-Time		Part-Time	
	N	%	N	%	N	%	N	%	N	%	N	%	N	%	N	%
Less than 18	6	0.1			9	0.2			6	0.1			12	0.3		
18	132	3.2	4	0.1	340	8.2	5	0.1	49	1.2	1	<.1	65	1.6		
19	174	4.2	10	0.2	334	8.1	18	0.4	34	0.8	2	<.1	66	1.6	1	<.1
20	133	3.2	12	0.3	247	6.0	15	0.4	30	0.7			37	0.9	2	<.1
21	135	3.3	18	0.4	291	7.1	21	0.5	26	0.6	3	0.1	41	1.0	4	0.1
22	107	2.6	14	0.3	177	4.3	40	1.0	23	0.6	3	0.1	29	0.7	6	0.1
23	75	1.8	23	0.6	89	2.2	28	0.7	9	0.2	4	0.1	13	0.3	5	0.1
24	34	0.8	27	0.7	49	1.2	25	0.6	5	0.1	2	0.0	8	0.2	1	<.1
25-30	133	3.2	82	2.0	172	4.2	113	2.7	5	0.1	10	0.2	9	0.2	2	<.1
31-35	51	1.2	30	0.7	55	1.3	63	1.5			1	<.1	1	<.1	2	<.1
36-40	20	0.5	24	0.6	52	1.3	58	1.4	1	<.1	2	<.1				
41-50	12	0.3	18	0.4	44	1.1	54	1.3					1	<.1		
51-64	4	0.1	3	0.1	5	0.1	17	0.4								
65 and over							1	<.1			1	<.1				
Unknown																
TOTALS	1,016	24.6	265	6.4	1,864	45.2	458	11.1	188	4.6	29	0.7	282	6.8	23	0.6

Age Characteristics

Graduate & First Professional Distribution

AGE	IN-STATE STUDENTS								OUT-OF-STATE STUDENTS							
	Men				Women				Men				Women			
	Full-Time		Part-Time		Full-Time		Part-Time		Full-Time		Part-Time		Full-Time		Part-Time	
	N	%	N	%	N	%	N	%	N	%	N	%	N	%	N	%
Less than 18																
18																
19																
20																
21					3	0.2	3	0.2			1	0.1			1	0.1
22	14	0.9	3	0.2	18	1.2	8	0.2	2	0.1	1	0.1	6	0.4	4	0.3
23	21	1.4	8	0.5	50	3.2	11	0.5	3	0.2	1	0.1	8	0.5	2	0.1
24	23	1.5	4	0.3	41	2.7	37	0.7	1	0.1			7	0.5	1	0.1
25-30	83	5.4	90	5.8	145	9.4	213	2.4	13	0.8	1	0.1	20	1.3	11	0.7
31-35	32	2.1	32	2.1	59	3.8	73	13.8	2	0.1	4	0.3	3	0.2	2	0.1
36-40	20	1.3	34	2.2	39	2.5	83	4.7	3	0.2	2	0.1	1	0.1	2	0.1
41-50	25	1.6	46	3.0	30	1.9	130	5.4	2	0.1	1	0.1	2	0.1		
51-64	4	0.3	9	0.6	8	0.5	28	8.4					1	0.1		
65 and over			1	<.1							1	0.1				
Unknown																
TOTALS	222	14.4	227	14.7	393	25.5	586	38.1	26	1.7	14	0.9	48	3.1	23	1.5

SOURCE: NCHED A-1.6 Survey of Headcount by Age Fall 1997

Academic Departments and Programs

Undergraduate Enrollment by Field of Study

COLLEGE OF ARTS & SCIENCES	1987		1992		1997	
	N	%	N	%	N	%
Department of Art	79	2.0	62	1.4	60	1.5
Department of Biology	168	4.2	220	5.1	310	7.5
Environmental Science	--	--	--	--	9	0.2
Department of Chemistry	34	0.8	51	1.2	54	1.3
Department of Criminal Justice	213	5.3	400	9.2	295	7.2
Department of Theatre	31	0.8	19	0.4	33	0.8
Department of English	144	3.6	206	4.7	216	5.2
Department of Geography	10	0.2	16	0.4	7	0.2
Department of Health Education	35	0.9	19	0.4	46	1.1
Department of History						
History	20	0.5	74	1.7	91	2.2
Social Sciences, General	2	<.1	1	<.1	1	<.1
Department of Human Sciences						
Textiles and Apparel	14	0.3	27	0.6	--	--
Nutrition and Dietetics	3	<.1	26	0.6	--	--
Family Relations & Child Development	--	--	--	--	14	0.3
Human Sciences, General	66	1.6	36	0.8	127	3.1
Department of Mathematics & Computer Science						
Mathematics, General	116	2.9	91	2.1	65	1.6
Computer & Information Science	123	3.1	151	3.5	119	2.9
Department of Modern Foreign Languages						
French	--	--	6	0.1	2	<.1
Spanish	3	0.1	5	0.1	12	0.3
Department of Music	48	1.2	45	1.0	60	1.5
Department of Nursing	253	6.3	141	3.2	148	3.6
Department of Philosophy **	--	--	2	<.1	--	--
Department of Physical Education						
Parks and Recreation *	13	0.3	17	0.4	--	--
Physical Education	53	1.3	59	1.4	129	3.1
Social Work, Help Services	--	--	--	--	25	0.6
Department of Physics	42	1.0	29	0.7	22	0.5
Department of Political Science & Government	283	7.1	501	11.5	311	7.5
Department of Psychology	94	2.3	159	3.7	168	4.1
Department of Sociology	71	1.8	88	2.0	75	1.8
TOTAL ARTS & SCIENCES	1,918	47.9	2,451	56.5	2,399	58.2

Academic Departments and Programs

Undergraduate Enrollment by Field of Study (Continued)

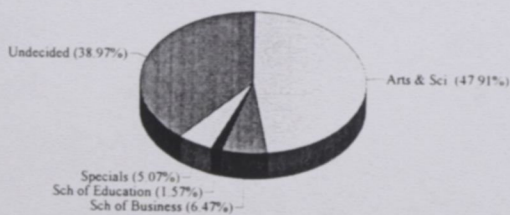
	1987		1992		1997	
	N	%	N	%	N	%
SCHOOL OF BUSINESS						
Accounting	68	1.7	106	2.4	89	2.2
Business Economics	2	0.0	--	--	1	<.1
Business Management and Administration	174	4.3	216	5.0	246	6.0
Business, Commerce & Distributive Education	15	0.4	5	0.1	--	--
TOTAL SCHOOL OF BUSINESS	259	6.5	327	7.5	336	8.1
SCHOOL OF EDUCATION						
Elementary Education, General	63	1.6	17	0.4	69	1.7
Middle Grades Education	--	---	--	---	9	0.2
TOTAL SCHOOL OF EDUCATION	63	1.6	17	0.4	78	1.9
SPECIALS	203	5.1	79	1.8	--	--
UNDECIDED	1,560	39.0	1,465	33.8	1,312	31.8
TOTALS	4,003	100	4,339	100	4,125	100

SOURCE: Student Data Files

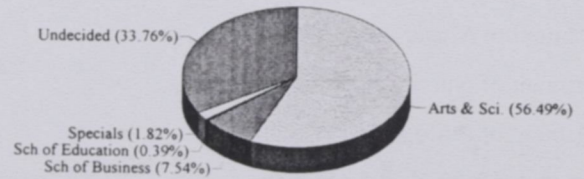
* Parks and Recreation was moved to API 0835 - Physical Education

** Philosophy was moved under English Department

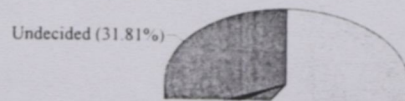
Undergraduate Enrollment, 1987



Undergraduate Enrollment, 1992



Undergraduate Enrollment, 1997



Academic Departments and Programs

Undergraduate Enrollment by Field of Study and Race

COLLEGE OF ARTS & SCIENCES

	White	Black	Amer. Indian	Asian	Hispanic	Other
Department of Art	7	53				
Department of Biology	8	296	1	4	1	
Environmental Science	3	6				
Department of Chemistry	3	51				
Department of Criminal Justice	14	279			1	1
Department of Theatre	4	28	1			
Department of English	12	204				
Department of Geography		7				
Department of Health Education	2	43				1
Department of History						
History	2	88				1
Social Sciences, General		1				
Department of Human Sciences						
Human Sciences, General ***	5	119		1	1	1
Family Relations & Child Development		14				
Department of Mathematics & Computer Science						
Mathematics, General	4	61				
Computer & Information Science	8	108			2	1
Department of Modern Foreign Languages						
French		2				
Spanish	3	7			2	
Department of Music	4	56				
Department of Nursing	30	109		8	1	
Department of Philosophy						
Department of Physical Education						
Physical Education ***	11	117			1	
Social Work, Help Services	3	22				
Department of Physics	3	17		2		
Department of Political Science & Government	9	299		1	2	
Department of Psychology	6	161				1
Department of Sociology	3	70	2			
TOTAL ARTS & SCIENCES	144	2,218	4	16	11	6

Academic Departments and Programs

Undergraduate Enrollment by Field of Study and Race (Continued)

	White	Black	Amer. Indian	Asian	Hispanic	Other
SCHOOL OF BUSINESS						
Accounting		88			1	
Business Economics					1	
Business Management and Administration	2	242				2
Business, Commerce & Distributive Education*						
TOTAL SCHOOL OF BUSINESS	2	330			2	2
SCHOOL OF EDUCATION						
Elementary Education, General	22	46			1	
Middle Grades Education**	2	7				
TOTAL SCHOOL OF EDUCATION	24	53			1	
UNDECIDED	87	1,201	4	9	8	3
TOTALS	257	3,802	8	25	22	11

SOURCE: Student Data Files

*Program Discontinued

**New Program

***Textiles & Apparel and Nutrition & Dietetics were moved under Human Sciences - Parks and Recreation was moved under Physical Education

Academic Departments and Programs

Graduate Enrollment by Field of Study

COLLEGE OF ARTS & SCIENCES	1987		1992		1997	
	N	%	N	%	N	%
Department of Biology	16	1.5	18	1.4	36	2.3
Department of Chemistry	12	1.1	6	0.5	9	0.6
Department of Criminal Justice	19	1.8	28	2.1	53	3.4
Department of English	15	1.4	10	0.8	13	0.8
Department of Geography Earth Science, General	--	--	--	--	7	0.5
Department of History	8	0.7	24	1.8	47	3.1
Department of Human Sciences	20	1.8	19	1.4	51	3.3
Department of Mathematics & Computer Science Mathematics, General	14	1.3	13	1.0	11	0.7
Department of Modern Foreign Languages French	2	0.2	--	--	1	0.1
Spanish	--	--	--	--	1	0.1
Department of Music	4	0.4	3	0.2	--	--
Department of Physical Education Physical Education	8	0.7	16	1.2	36	2.3
Parks and Recreation *	3	0.3	--	--	--	--
Department of Public Administration	56	5.2	60	4.5	129	8.4
Department of Psychology	28	2.6	42	3.2	88	5.7
Department of Sociology	6	0.6	14	1.1	22	1.4
TOTAL ARTS & SCIENCES	211	19.4	253	19.1	504	32.7
SCHOOL OF BUSINESS						
Business, Commerce & Distributive Education	2	0.2	6	0.5	--	--
Business Management and Administration	22	2.0	26	2.0	30	1.9
TOTAL SCHOOL OF BUSINESS	24	2.2	32	2.4	30	1.9
SCHOOL OF EDUCATION						
Special Education	16	1.5	38	2.9	42	2.7
Educational Administration & Supervision	26	2.4	22	1.7	6	0.4
Educational Media	8	0.7	16	1.2	22	1.4
Elementary Education, General	89	8.2	18	1.4	16	1.0
Middle Grades Education	4	0.4	5	0.4	--	--
Speech Pathology & Audiology	18	1.7	24	1.8	62	4.0
Student Personnel, Guidance & Counseling	68	6.3	113	8.5	114	7.4
TOTAL SCHOOL OF EDUCATION	229	21.11	236	17.77	262	17.02

Academic Departments and Programs

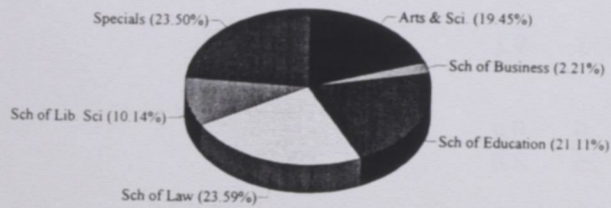
Graduate Enrollment by Field of Study (Continued)

	1987		1992		1997	
	N	%	N	%	N	%
SCHOOL OF LAW						
Juris Doctor's	256	23.6	301	22.7	382	24.8
SCHOOL OF LIBRARY & INFORMATION SCIENCES						
Library Science, General	110	10.1	183	13.8	176	11.4
Information Sciences & Systems	--	--	14	1.1	23	1.5
TOTAL SCH. OF LIBRARY & INFO. SCI.	110	10.1	197	14.8	199	12.93
SPECIALS	255	23.5	309	23.3	162	10.5
TOTALS	1085	100	1328	100	1539	100

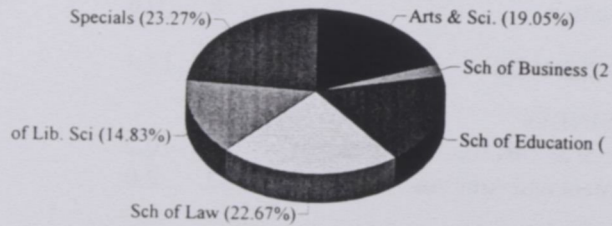
SOURCE: Student Data Files

* Parks and Recreation was moved to API 0835 - Physical Education

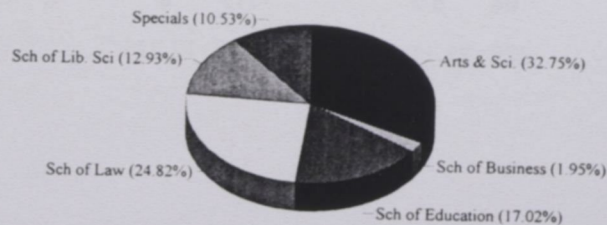
Graduate Enrollment, 1987



Graduate Enrollment, 1992



Graduate Enrollment, 1997



Academic Departments and Programs

Graduate Enrollment by Field of Study and Race

COLLEGE OF ARTS & SCIENCES	White	Black	Amer. Indian	Asian	Hispanic	Other
Department of Biology	1	35				
Department of Chemistry	1	7		1		
Department of Criminal Justice	12	40	1			
Department of Geography	2	5				
Department of English		12	1			
Department of History						
History	6	40			1	
Department of Human Sciences						
Human Sciences	10	39	1	1		
Department of Mathematics & Computer Science						
Mathematics, General	2	9				
Department of Modern Foreign Languages						
French		1				
Spanish	1					
Department of Music						
Department of Physical Education						
Physical Education ***	6	30				
Public Administration	8	120			1	
Department of Psychology	16	71		1		
Department of Sociology	2	19				1
TOTAL ARTS & SCIENCES	67	428	3	3	2	1
SCHOOL OF BUSINESS						
Business Management and Administration	3	23		4		
Business, Commerce & Distributive Education*						
TOTAL SCHOOL OF BUSINESS	3	23		4		

Academic Departments and Programs

Graduate Enrollment by Field of Study and Race (Continued)

SCHOOL OF EDUCATION	White	Black	Amer. Indian	Asian	Hispanic	Other
Special Education	20	22				
Educational Administration & Services	1	5				
Educational Media	6	16				
Elementary Education, General	6	9				
Middle Grades Education**						1
Speech Pathology and Audiology	22	36	1		2	1
Student Personnel, Guidance Counseling	38	76				
TOTAL SCHOOL OF EDUCATION	93	164	1		2	2
SCHOOL OF LAW	180	182	8	4	4	4
SCHOOL OF LIBRARY SCIENCE						
Library Science	121	47	1	5	2	
Information Science	3	14	1	5		
TOTAL SCHOOL OF LIBRARY SCIENCE	124	61	2	10	2	
Specials	55	102	1	3		1
TOTALS	522	960	15	24	10	8

SOURCE: Student Data Files

* Program Discontinued

** New Program

*** Parks and Recreation was moved under Physical Education

*Facts About
Faculty and Staff*

General Characteristics of Faculty

Instructional Staffing Patterns by Academic Unit and Rank for Full and Part-Time Faculty

Academic Unit And Rank	1987	1992	1997			FTE
			FULL TIME	PART TIME	TOTAL	
Art						
Professor	1	1	2		2	2.0
Associate Professor	4	3	3		3	3.0
Assistant Professor	1		1		1	1.0
Instructor	1					
Other Faculty	5	5	2	1	3	2.1
Total	12	9	8	1	9	8.1

Biology						
Professor	3	4	2		2	2.0
Associate Professor	7	6	4		4	4.0
Assistant Professor	2	1	5		5	5.0
Instructor						
Other Faculty	9	4	1	10	11	2.2
Total	21	15	12	10	22	13.2

Business						
Professor	2	6	7		7	7.0
Associate Professor	11	10	10		10	10.0
Assistant Professor	15	11	9		9	9.0
Instructor	2	2	2		2	2.0
Other Faculty	7	13	5	6	11	6.3
Total	37	42	33	6	39	34.3

Chemistry						
Professor	3	3	3		3	3.0
Associate Professor	1	1	1		1	1.0
Assistant Professor	1	2	2		2	2.0
Instructor						
Other	5	4		2	2	0.4
Total	10	10	6	2	8	6.4

Criminal Justice*						
Professor		1	1		1	1.0
Associate Professor		1	2		2	2.0
Assistant Professor		2	1		1	1.0
Instructor						
Other Faculty		6	1	5	6	2.2
Total		10	5	5	10	6.2

Theatre						
Professor	1	2	2		2	2.0
Associate Professor	1	3	3		3	3.0
Assistant Professor	2					
Instructor						
Other Faculty	2	1		1	1	0.1
Total	6	6	5	1	6	5.1

Academic Unit And Rank	1987	1992	1997			FTE
			FULL TIME	PART TIME	TOTAL	
Education						
Professor	8	9	6		6	6.0
Associate Professor	8	6	10		10	10.0
Assistant Professor	8	7	10		10	10.0
Instructor	3		6		6	6.0
Other Faculty	6	22	3	7	10	3.9
Total	33	44	35	7	42	35.9

English						
Professor	4	5	2		2	2.0
Associate Professor	7	8	8		8	8.0
Assistant Professor	10	5	8		8	8.0
Instructor	2	2	2		2	2.0
Other Faculty	6	15	8	3	11	8.5
Total	29	35	28	3	31	28.5

Geography						
Professor	1	1	1		1	1.0
Associate Professor	3	4	3		3	3.0
Assistant Professor	1		1		1	1.0
Instructor						
Other Faculty	3	1		1	1	0.1
Total	8	6	5	1	6	5.1

Health Education						
Professor		1				
Associate Professor	2	1	1		1	1.0
Assistant Professor		1	4		4	4.0
Instructor	3	2				
Other Faculty	4	6				
Total	9	11	5		5	5.0

History						
Professor	5	2	3		3	3.0
Associate Professor	2					
Assistant Professor	4	4	5	1	6	5.8
Instructor		1				
Other Faculty	2	2		1	1	0.5
Total	13	9	8	2	10	9.3

Human Sciences						
Professor			1		1	1.0
Associate Professor	3	4	2		2	2.0
Assistant Professor	5	5	3		3	3.0
Instructor						
Other Faculty	3	10	6	2	8	6.3
Total	11	19	12	2	14	12.3

General Characteristics of Faculty

Instructional Staffing Patterns by Academic Unit and Rank for Full and Part-Time Faculty (Continued)

Academic Unit And Rank	1987	1992	1997		TOTAL	FTE
			FULL TIME	PART TIME		
Law						
Professor	6	9	10		10	10.0
Associate Professor	4	3	3		3	3.0
Assistant Professor	3	1	2	1	3	2.8
Instructor						
Other Faculty	10	13	2	9	11	2.9
Total	23	26	17	10	27	18.7

Academic Unit And Rank	1987	1992	1997		TOTAL	FTE
			FULL TIME	PART TIME		
Library & Information Sciences						
Professor	2	2	4		4	4.0
Associate Professor	2	4	1		1	1.0
Assistant Professor	1	1	2		2	2.0
Instructor	1					
Other Faculty	5	6	2	5	7	3.2
Total	11	13	9	5	14	10.2

Academic Unit And Rank	1987	1992	1997		TOTAL	FTE
			FULL TIME	PART TIME		
Mathematics & Computer Science						
Professor	1	1				
Associate Professor	5	6	7		7	7.0
Assistant Professor	3	6	5		5	5.0
Instructor	3	1	1		1	1.0
Other Faculty	9	6	4	3	7	5.0
Total	21	20	17	3	20	18.0

Academic Unit And Rank	1987	1992	1997		TOTAL	FTE
			FULL TIME	PART TIME		
Modern Foreign Languages						
Professor	1	1	2		2	2.0
Associate Professor	3	3	1		1	1.0
Assistant Professor	4	3	6		6	6.0
Instructor						
Other Faculty	6	8	2	7	9	2.7
Total	14	15	11	7	18	11.7

Academic Unit And Rank	1987	1992	1997		TOTAL	FTE
			FULL TIME	PART TIME		
Music						
Professor	2	2				
Associate Professor	3	2	2		2	2.0
Assistant Professor	3	1	3		3	3.0
Instructor						
Other Faculty	5	7	3	7	10	3.7
Total	13	12	8	7	15	8.7

Academic Unit And Rank	1987	1992	1997		TOTAL	FTE
			FULL TIME	PART TIME		
Nursing						
Professor			1		1	1.0
Associate Professor	1	2	3		3	3.0
Assistant Professor	10	4	5		5	5.0
Instructor	1	1	3		3	3.0
Other Faculty	5	10	1	8	9	2.7
Total	17	17	13	8	21	14.7

Academic Unit And Rank	1987	1992	1997		TOTAL	FTE
			FULL TIME	PART TIME		
Physical Education						
Professor						
Associate Professor	4	5	6		6	6.0
Assistant Professor	8	7	5		5	5.0
Instructor	3	1	1		1	1.0
Other Faculty	2	5	6	2	8	7.3
Total	17	18	18		20	19.3

Academic Unit And Rank	1987	1992	1997		TOTAL	FTE
			FULL TIME	PART TIME		
Physics						
Professor	4	4	4		4	4.0
Associate Professor						
Assistant Professor						
Instructor						
Other Faculty	2	2	2	1	3	2.5
Total	6	6	6	1	7	6.5

Academic Unit And Rank	1987	1992	1997		TOTAL	FTE
			FULL TIME	PART TIME		
Political Science *						
Professor	3	2	1		1	1.0
Associate Professor	3	1	2		2	2.0
Assistant Professor	3	1	2		2	2.0
Instructor	2					
Other Faculty	11	1		1	1	0.1
Total	22	5	5	1	6	5.1

Academic Unit And Rank	1987	1992	1997		TOTAL	FTE
			FULL TIME	PART TIME		
Psychology						
Professor	1	1	3		3	3.0
Associate Professor	1	3	3		3	3.0
Assistant Professor	2	1				
Instructor						
Other Faculty	3	4		2	2	0.2
Total	7	9	6	2	8	6.2

Academic Unit And Rank	1987	1992	1997		TOTAL	FTE
			FULL TIME	PART TIME		
Public Administration*						
Professor						
Associate Professor			2		2	2.0
Assistant Professor		4	4		4	4.0
Instructor						
Other Faculty		6		4	4	0.6
Total		10	6	4	10	6.6

Academic Unit And Rank	1987	1992	1997		TOTAL	FTE
			FULL TIME	PART TIME		
Sociology						
Professor	2	2	3		3	3.0
Associate Professor	3	2	3		3	3.0
Assistant Professor	2	3	2		2	2.0
Instructor						
Other Faculty	2	1				
Total	9	8	8		8	8.0

General Characteristics of Faculty

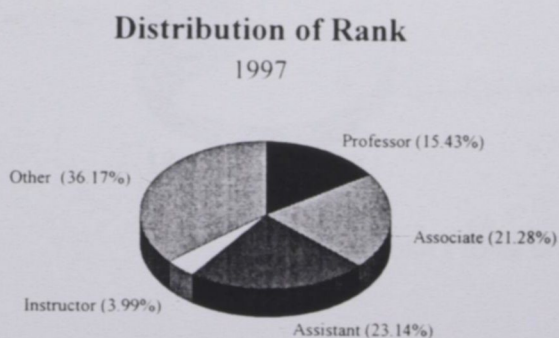
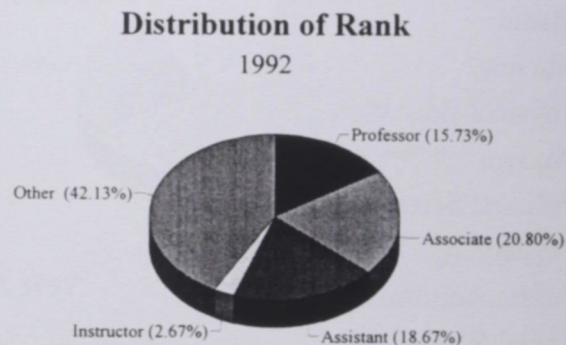
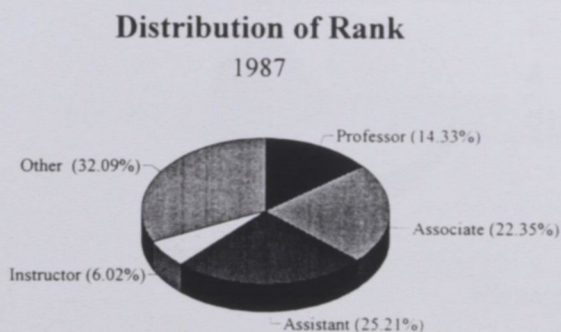
Instructional Staffing Patterns by Academic Unit and Rank for Full and Part-Time Faculty (Continued)

Academic Unit And Rank	1987	1992	1997		TOTAL	FTE
			FULL TIME	PART TIME		
SUMMARY						
Professor	50	59	58		58	58.0
Associate	78	78	80		80	80.0
Assistant Professor	88	70	85	2	87	86.6
Instructor	21	10	15		15	15.0
Other Faculty	112	158	48	88	136	63.4
Total	349	375	286	90	376	303.0

* Prior to 1992, data for Criminal Justice and Public Administration were reported in Political Science. Since 1992, data for Criminal Justice and Public Administration are reported in separate categories.

SOURCE: Personnel Data File as of October 1, 1997

Distribution of Rank for Full-Time Faculty



General Characteristics of Faculty

Highest Earned Degree for Full-Time Faculty by Academic Unit

Academic Unit	Doctorate	Master's	Professional	Bachelor's
Art	3	5		
Biology	12			
Chemistry	6			
Criminal Justice	3	1	1	
Theatre	3	2		
English	15	12		1
Geography	5			
Health Education	2	3		
History	6	2		
Human Sciences	7	3		2
Mathematics & Computer Science	10	7		
Modern Foreign Languages	6	5		
Music	3	4		1
Nursing	5	8		
Physical Education	8	10		
Physics	6			
Political Science	5			
Psychology	6			
Public Administration	6			
Social Work				
Sociology	8			
School of Business	22	8	2	1
School of Education	30	5		
School of Law	1	4	13	
School of Library & Information Sci.	6	2		
Total	184	81	16	5

SOURCE: Personnel Data File as of October 1, 1997

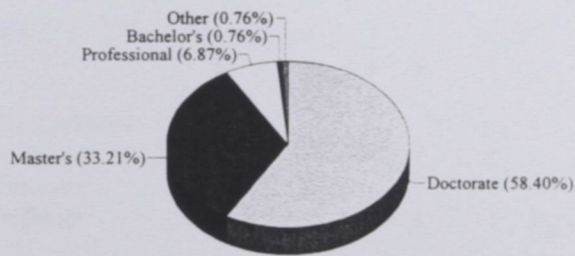
General Characteristics of Faculty

Summary of Highest Earned Degree for Full-Time Faculty

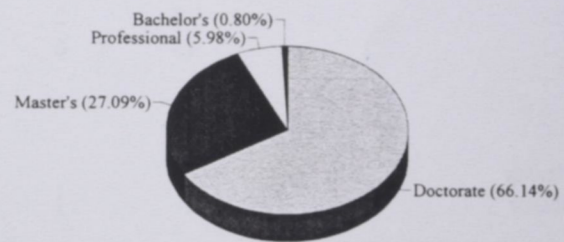
DEGREE	1987	1992	1997
	N	N	N
Doctorate	153	166	180
Master's	87	68	85
Professional	18	15	16
Bachelor's	2	2	5
Other	2	--	--
TOTAL	262	251	286

SOURCE: Personnel Data File as of October 1, 1997

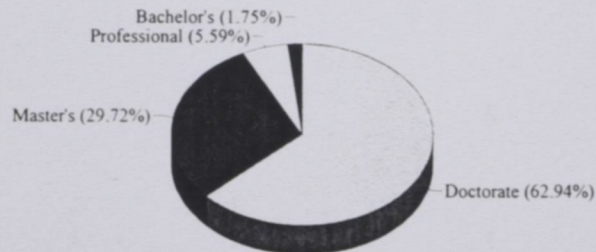
Highest Degree Earned, 1987



Highest Degree Earned, 1992



Highest Degree Earned, 1997



General Characteristics of Faculty

Race and Sex of Full-Time Faculty

Academic Unit & Rank	BLACK		WHITE		OTHER		TOTAL
	Men	Women	Men	Women	Men	Women	
ART							
Professor	1	1					2
Associate Professor	1			2			3
Assistant Professor	1						1
Instructor							
Other Faculty	1			1			2
TOTAL	4	1		3			8
BIOLOGY							
Professor	1		1				2
Associate Professor	1	1	2				4
Assistant Professor	1	2			1	1	5
Instructor							
Other Faculty	1						1
TOTAL	4	3	3		1	1	12
BUSINESS							
Professor	3	1	2		1		7
Associate Professor	3	2	3	2			10
Assistant Professor	5		2	2			9
Instructor	1	1					2
Other Faculty	3	2					5
TOTAL	15	6	7	4	1		33
CHEMISTRY							
Professor	1		2				3
Associate Professor					1		1
Assistant Professor		1	1				2
Instructor							
Other Faculty							
TOTAL	1	1	3		1		6
CRIMINAL JUSTICE							
Professor	1						1
Associate Professor	2						2
Assistant Professor			1				1
Instructor							
Other Faculty			1				1
TOTAL	3		2				5
THEATRE							
Professor		1	1				2
Associate Professor	1	1		1			3
Assistant Professor							
Instructor							
Other Faculty							0
TOTAL	1	2	1	1			5

General Characteristics

Race and Sex of Full-Time Faculty (Continued)

Academic Unit & Rank	BLACK		WHITE		OTHER		TOTAL
	Men	Women	Men	Women	Men	Women	
EDUCATION							
Professor		2		2	2		6
Associate Professor	3	3	3	1			10
Assistant Professor		4	2	4			10
Instructor	1	3		2			6
Other Faculty	2	1					3
TOTAL	6	13	5	9	2		35
ENGLISH							
Professor		1		1			2
Associate Professor	2	2	2	1		1	8
Assistant Professor	1	1	3	2		1	8
Instructor		2					2
Other Faculty		6		2			8
TOTAL	3	12	5	6		2	28
GEOGRAPHY							
Professor	1						1
Associate Professor	2		1				3
Assistant Professor	1						1
Instructor							
Other Faculty							
TOTAL	4		1				5
HEALTH EDUCATION							
Professor							
Associate Professor	1						1
Assistant Professor	1	2		1			4
Instructor							
Other Faculty							
TOTAL	2	2		1			5
HISTORY							
Professor	2	1					3
Associate Professor							
Assistant Professor	3	1	1				5
Instructor							
Other Faculty							
TOTAL	5	2	1				8
HUMAN SCIENCES							
Professor		1					1
Associate Professor	1	1					2
Assistant Professor		1		1		1	3
Instructor							
Other Faculty		6					6
TOTAL	1	9		1		1	12

General Characteristics

Race and Sex of Full-Time Faculty (Continued)

Academic Unit & Rank	BLACK		WHITE		OTHER		TOTAL
	Men	Women	Men	Women	Men	Women	
LAW							
Professor	3	1	4	2			10
Associate Professor	1	1		1			3
Assistant Professor		2					2
Instructor							
Other Faculty		1		1			2
TOTAL	4	5	4	4			17
LIBRARY & INFORMATION SCIENCES							
Professor	1	1	2				4
Associate Professor		1					1
Assistant Professor		1	1				2
Instructor							
Other Faculty		1			1		2
TOTAL	1	4	3		1		9
MATHEMATICS & COMPUTER SCIENCE							
Professor							
Associate Professor	3	1	3				7
Assistant Professor	1	1	3				5
Instructor	1						1
Other Faculty	2	2					4
TOTAL	7	4	6				17
MODERN FOREIGN LANGUAGES							
Professor	2						2
Associate Professor			1				1
Assistant Professor	1		1	3		1	6
Instructor							
Other Faculty		2					2
TOTAL	3	2	2	3		1	11
MUSIC							
Professor							
Associate Professor	1	1					2
Assistant Professor	2	1					3
Instructor							
Other Faculty	1	1	1				3
TOTAL	4	3	1				8
NURSING							
Professor		1					1
Associate Professor		3					3
Assistant Professor		4		1			5
Instructor		1		2			3
Other Faculty	1						1
TOTAL	1	9		3			13

General Characteristics

Race and Sex of Full-Time Faculty (Continued)

Academic Unit & Rank	BLACK		WHITE		OTHER		TOTAL
	Men	Women	Men	Women	Men	Women	
PHYSICAL EDUCATION							
Professor							
Associate Professor	3	1		2			6
Assistant Professor	1	3	1				5
Instructor			1				1
Other Faculty	2	1	1	1		1	6
TOTAL	6	5	3	3		1	18
PHYSICS							
Professor			3		1		4
Associate Professor							
Assistant Professor							
Instructor							
Other Faculty			1		1		2
TOTAL			4		2		6
POLITICAL SCIENCE							
Professor			1				1
Associate Professor	1		1				2
Assistant Professor	1		1				2
Instructor							
Other Faculty							
TOTAL	2		3				5
PSYCHOLOGY							
Professor	2			1			3
Associate Professor	2	1					3
Assistant Professor							
Instructor							
Other Faculty							
TOTAL	4	1		1			6
PUBLIC ADMINISTRATION							
Professor							
Associate Professor	2						2
Assistant Professor	1	1		1	1		4
Instructor							
Other Faculty							
TOTAL	3	1		1	1		6
SOCIOLOGY							
Professor	1		2				3
Associate Professor	2		1				3
Assistant Professor		1				1	2
Instructor							
Other Faculty							
TOTAL	3	1	3			1	8

Summary of Race and Sex by Academic Rank

Academic Rank	BLACK		WHITE		OTHER		TOTAL
	Men	Women	Men	Women	Men	Women	
Professor	19	11	18	6	4	---	58
Associate Professor	32	19	17	10	1	1	80
Assistant Professor	20	26	17	15	2	5	85
Instructor	3	7	1	4	---	---	15
Other Faculty	13	23	4	5	2	1	48
TOTAL	87	86	57	40	9	7	286

SOURCE: Personnel Data File as of October 1, 1997

Tenure Status of Faculty

By Academic Unit

Academic Unit	Tenured		On Tenure Track		Not On Track		TOTAL
		%		%		%	
Art	5	62.5	1	12.5	2	25.0	8
Biology	5	41.7	6	50.0	1	8.3	12
Business	20	60.6	7	21.2	6	18.2	33
Chemistry	4	66.7	2	33.3			6
Criminal Justice	3	60.0	1	20.0	1	20.0	5
Dramatic Arts	5	100.0					5
Education	11	31.4	14	40.0	10	28.6	35
English	10	35.7	8	28.6	10	35.7	28
Geography	4	80.0	1	20.0			5
Health Education	2	40.0	3	60.0			5
History	4	50.0	4	50.0			8
Human Sciences	2	16.7	4	33.3	6	50.0	12
Law	13	76.5	2	11.8	2	11.8	17
Library & Information Sciences	7	77.8			2	22.2	9
Mathematics & Computer Sci.	9	52.9	3	17.6	5	29.4	17
Modern Foreign Languages	5	45.5	4	36.4	2	18.2	11
Music			5	62.5	3	37.5	8
Nursing	4	30.8	5	38.5	4	30.8	13
Physical Education	7	38.9	4	22.2	7	38.9	18
Physics	4	66.7			2	33.3	6
Political Science	2	40.0	3	60.0			5
Public Administration	1	16.7	5	83.3			6
Psychology	5	83.3	1	16.7			6
Sociology	7	87.5	1	12.5			8
SUMMARY	139	48.6	84	29.4	63	22.0	286

NOTE: Data included in this table are for instructional faculty only. Those on leave are omitted.

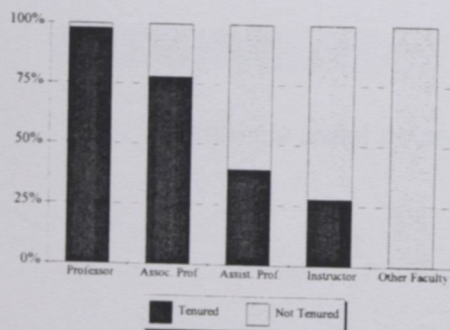
SOURCE: Personnel Data File as of October 1, 1997

Tenure Status of Faculty

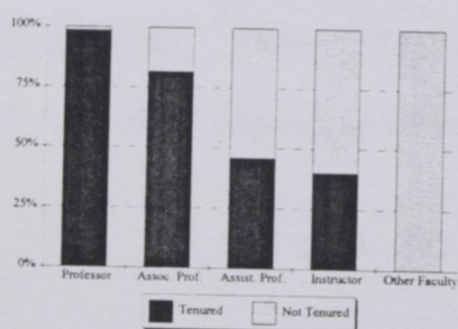
By Rank and Sex

Year & Academic Rank	MEN			WOMEN			Grand Total	N Tenured	% Tenured
	Total	N	%	Total	N	%			
1987									
Professor	38	37	97%	10	10	100%	48	47	98%
Associate Professor	51	39	76%	26	21	81%	77	60	78%
Assistant Professor	49	23	47%	39	12	31%	88	35	40%
Instructor	6	2	33%	12	3	25%	18	5	28%
Other Faculty	18		0%	13		0%	31		0%
Total	162	101	62%	100	46	46%	262	147	56%
1992									
Professor	45	45	100%	13	12	92%	58	57	98%
Associate Professor	52	43	83%	24	19	79%	76	62	82%
Assistant Professor	35	20	57%	35	12	34%	70	32	46%
Instructor	3	2	67%	7	2	29%	10	4	40%
Other Faculty	13		0%	24		0%	37		0%
Total	148	110	74%	103	45	44%	251	155	62%
1997									
Professor	41	41	100%	17	17	100%	58	58	100%
Associate	50	37	74%	30	22	73%	80	59	74%
Assistant	39	14	36%	46	7	15%	85	21	25%
Instructor	4	1	25%	11		0%	15	1	7%
Other Faculty	19		0%	29		0%	48		0%
Total	153	93	61%	133	46	35%	286	139	49%

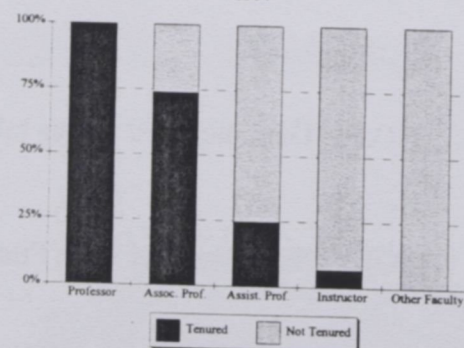
Tenure Status for Full-Time Faculty 1987



Tenure Status for Full-Time Faculty 1992



Tenure Status for Full-Time Faculty 1997



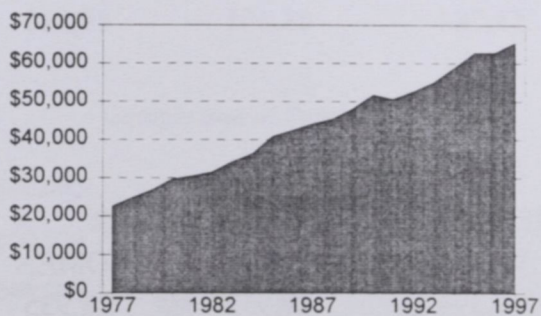
SOURCE: Personnel Data File as of October 1, 1997

Faculty Salaries

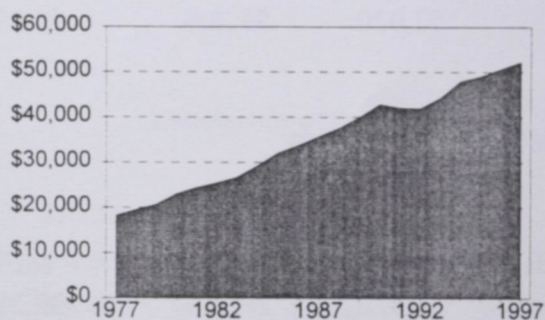
Mean Salaries of Full-Time Instructional Faculty by Rank *

Year	1977-1987				1988-1997			
	Professor	Associate Professor	Assistant Professor	Instructor	Professor	Associate Professor	Assistant Professor	Instructor
1977	22,641	18,222	15,057	12,790	45,475	37,648	32,371	28,709
1978	24,874	19,492	16,240	13,921	48,100	40,052	33,662	29,862
1979	26,956	20,656	17,305	14,199	51,801	42,898	35,979	30,927
1980	29,735	23,027	19,337	15,415	50,624	42,085	35,729	33,011
1981	30,514	24,411	20,718	17,825	52,595	41,918	35,929	32,520
1982	31,558	25,491	22,123	18,545	55,130	44,264	37,082	32,423
1983	34,236	26,671	23,442	19,455	58,883	47,967	39,915	37,575
1984	36,350	29,319	26,456	21,847	60,409	47,954	40,882	34,726
1985	40,917	32,022	28,451	22,144	62,761	50,707	43,011	34,672
1986	42,444	33,749	29,478	22,740	65,422	52,290	44,386	35,740
1987	44,122	35,680	30,900	25,679				

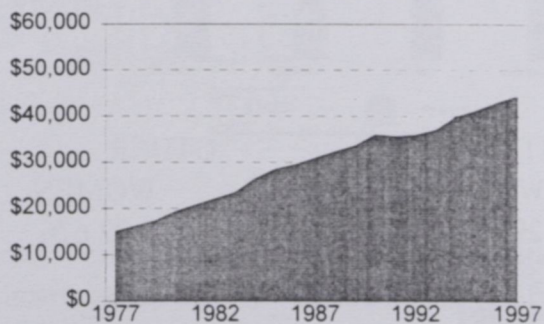
Mean Salaries for Professors



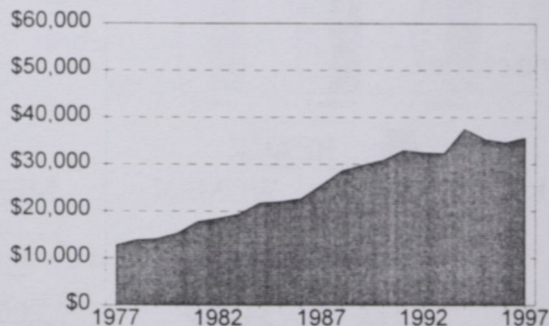
Mean Salaries for Associates



Mean Salaries for Assistants



Mean Salaries for Instructors



* Salary data adjusted to nine-month salary scales

SOURCE: Personnel Data File as of Fall 1997

Faculty Salaries

Mean Salaries by Rank, Race, & Sex *

Professors

YEAR	BLACK		WHITE		OTHER	
	MEN	WOMEN	MEN	WOMEN	MEN	WOMEN
1987	45,177	41,379	45,223	42,209	41,326	--
1992	54,762	50,643	51,696	53,183	48,864	--
1997	67,298	61,714	65,781	70,740	57,116	--

Associate Professors

YEAR	BLACK		WHITE		OTHER	
	MEN	WOMEN	MEN	WOMEN	MEN	WOMEN
1987	36,293	38,005	35,071	32,908	32,564	--
1992	40,787	44,727	42,242	40,428	37,428	--
1997	52,020	55,209	49,337	53,784	43,451	49,545

Assistant Professors

YEAR	BLACK		WHITE		OTHER	
	MEN	WOMEN	MEN	WOMEN	MEN	WOMEN
1987	31,320	29,807	32,227	29,394	40,952	28,935
1992	37,598	36,395	33,987	32,311	--	--
1997	45,616	46,499	42,964	43,817	36,833	38,047

Instructors

YEAR	BLACK		WHITE		OTHER	
	MEN	WOMEN	MEN	WOMEN	MEN	WOMEN
1987	25,523	24,406	33,194	29,536	--	22,676
1992	28,114	33,820	--	34,407	--	--
1997	31,373	34,449	33,000	41,961	--	--

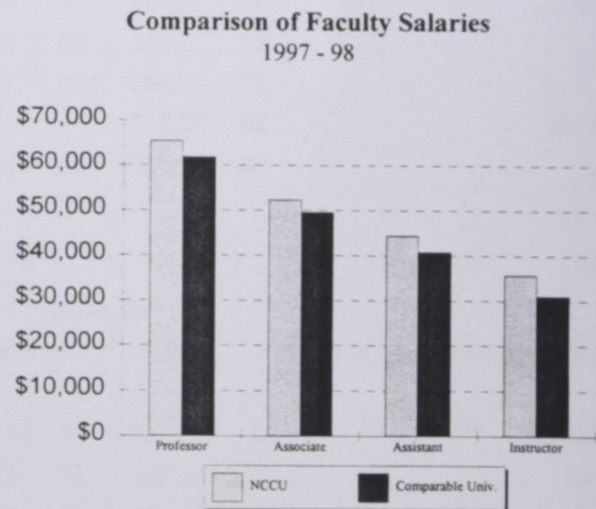
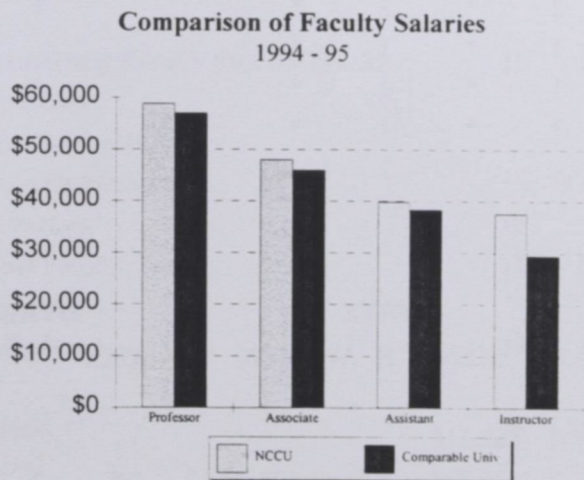
*Salary data adjusted to nine-month salary scales

SOURCE: Personnel Data File as of October 1, 1997

Faculty Salaries

Comparison of Faculty Salaries by Rank for NCCU * and Comparable Public Universities **

RANK	1994 - 95		1997 - 98	
	NCCU*	COMPARABLE UNIVERSITIES**	NCCU*	COMPARABLE UNIVERSITIES***
Professor	\$58,883	\$57,090	\$65,422	\$61,839
Associate Professor	47,967	46,020	52,290	49,577
Assistant Professor	39,915	38,360	44,386	40,762
Instructor	37,575	29,460	35,740	31,055



* Source: Personnel Data File, Fall 1997 Salary data adjusted to nine-month salary scales for instructional faculty who are full-time EPA employees.

** Source Chronicle of Higher Education,
Vol. XLI V No. 31, April 10, 1998, Page A15.

*** The salary figures are based on data from 1,839 Institutions representing 2,228 campuses.

Employees Salaries

Mean Salaries by Occupational Activity Category, Race & Sex *

Fall 1987

Occupational Activity Category	BLACK				WHITE				OTHER			
	N	MEN	N	WOMEN	N	MEN	N	WOMEN	N	MEN	N	WOMEN
Administrators	27	\$49,094	11	\$41,696	8	\$45,080	2	*				
Professional	25	26,235	49	25,539	2	*	2	*	1	*	2	*
Technical	34	19,342	33	18,253	3	23,176						
Clerical	17	16,116	193	17,272	1	*		*				
Skilled Crafts	34	19,129	4	19,434	1	*					1	*
Service	85	12,789	52	11,675	1	*	1	*				

Fall 1992

Occupational Activity Category	BLACK				WHITE				OTHER			
	N	MEN	N	WOMEN	N	MEN	N	WOMEN	N	MEN	N	WOMEN
Administrators	24	\$56,436	23	\$49,960	7	\$51,960	3	\$61,883				
Professional	31	33,966	38	31,426	2	*	2	*			1	*
Technical	27	22,535	18	23,248	1	*	1	*				
Clerical	21	17,698	174	20,810	1	*	2	*			2	*
Skilled Crafts	29	22,347	1	*	1	*	1	*				
Service	59	15,607	33	14,013			3	16,621				

Fall 1997

Occupational Activity Category	BLACK				WHITE				OTHER			
	N	MEN	N	WOMEN	N	MEN	N	WOMEN	N	MEN	N	WOMEN
Administrators	28	\$69,700	36	\$57,414	6	\$62,118						
Professional	38	39,705	68	37,734	7	36,884	3	48,571	2	*	2	*
Technical	32	25,657	33	25,705	1	*	1	*	2	*		
Clerical	25	23,758	200	24,113	2	*	2	*			2	*
Skilled Crafts	43	24,162	1	*	3	25,538	1	*				
Service	56	18,413	42	17,768			1	*				

* Salary means are omitted for cells with fewer than three persons.

Instructional faculty are not included among these categories.

SOURCE: Personnel Data File as of October 1, 1997

Employees (Full-Time)

Totals by Occupational Activity Category, Race, & Sex

Occupational Activity Category	BLACK		WHITE		OTHER		TOTAL		TOTAL
	MEN	WOMEN	MEN	WOMEN	MEN	WOMEN	MEN	WOMEN	
Administrators	28	36	6				34	36	70
Instructional Faculty (Tenured)	50	30	38	15	5	1	93	46	139
Professors	19	11	18	6	4		41	17	58
Associate Professors	22	13	14	8	1	1	37	22	59
Assistant Professors	8	6	6	1			14	7	21
Instructors	1						1		1
Other Faculty									
Instructional Faculty (On Tenure Track)	22	25	14	16	2	5	38	46	84
Professors									
Associate Professors	10	6	3	2			13	8	21
Assistant Professors	12	19	11	13	2	5	25	37	62
Instructors				1				1	1
Other Faculty									
Instructional Faculty (Not on Track)	15	31	5	9	2	1	22	41	63
Professors									
Associate Professors									
Assistant Professors		1		1				2	2
Instructors	2	7	1	3			3	10	13
Other Faculty	13	23	4	5	2	1	19	29	48
Professional	38	68	7	3	2	2	47	73	120
Clerical	25	200	2	2		2	27	204	231
Technical	32	33	1	1	2		35	34	69
Skilled Crafts	43	1	3	1			46	2	48
Service	56	42		1			56	43	99
TOTAL	309	466	76	48	13	11	398	525	923

SOURCE: Personnel Data File as of October 1, 1997

Employees (Full-Time)

New Employees

Occupational Activity Category	BLACK		WHITE		OTHER		TOTAL		Total
	MEN	WOMEN	MEN	WOMEN	MEN	WOMEN	MEN	WOMEN	
Administrators	3	3					3	3	6
Instructional Faculty (Tenured)									
Professors									
Associate Professors									
Assistant Professors									
Instructors									
Other Faculty									
Instructional Faculty (On Tenure Track)									
Professors	3	2	1	2			4	4	8
Associate Professors	2	2	1				3	2	5
Assistant Professors	1			2			1	2	3
Instructors									
Other Faculty									
Instructional Faculty (Not on Track)									
Professors	1	4					1	4	5
Associate Professors									
Assistant Professors									
Instructors									
Other Faculty	1	4					1	4	5
Professional	2	4					2	4	6
Clerical	2	4					2	4	6
Technical		1						1	1
Skilled Crafts	1						1		1
Service	3	4					3	4	7
TOTAL	15	22	1	2			16	24	40

SOURCE: Personnel Data File as of October 1, 1997

Employees (Full-Time)

Retirements, Resignations, & Dismissals

Occupational Activity Category	BLACK		WHITE		OTHER		TOTAL		TOTAL
	MEN	WOMEN	MEN	WOMEN	MEN	WOMEN	MEN	WOMEN	
Administrators	4	3	1	1			5	4	9
Instructional Faculty (Tenured)	3	3	1	2	1		5	5	10
Professors			1	1			1	1	2
Associate Professors	2	2			1		3	2	5
Assistant Professors	1	1		1			1	2	3
Instructors									
Other Faculty									
Instructional Faculty (On Tenure Track)	3	2	2	1			5	3	8
Professors	1	1					1	1	2
Associate Professors	1	1	1				2	1	3
Assistant Professors	1		1	1			2	1	3
Instructors									
Other Faculty									
Instructional Faculty (Not on Track)	10	8	5	4		1	15	13	28
Professors									
Associate Professors									
Assistant Professors									
Instructors									
Other Faculty	10	8	5	4		1	15	13	28
Professional	8	16	4	2		1	12	19	31
Clerical	7	45					7	45	52
Technical	8	7		1			8	8	16
Skilled Crafts	15	2		1			15	3	18
Service	13	4					13	4	17
TOTAL	71	90	13	12	1	2	85	104	189

SOURCE: Personnel Data File as of October 1, 1997

Employees (Full-Time)

Promotions

Occupational Activity Category	BLACK		WHITE		OTHER		TOTAL		TOTAL
	MEN	WOMEN	MEN	WOMEN	MEN	WOMEN	MEN	WOMEN	
Administrators									
Instructional Faculty (Tenured)									
Professors	1		1		1		1	2	3
Associate Professors	1		1				1	1	2
Assistant Professors					1			1	1
Instructors									
Other Faculty									
Instructional Faculty (On Tenure Track)									
Professors			1				1		1
Associate Professors			1				1		1
Assistant Professors									
Instructors									
Other Faculty									
Professional									
Clerical									
		3		1				4	4
Technical									
Skilled Crafts									
	1						1		1
Service									
	1						1		1
TOTAL	2	4	2	1	1		4	6	10

SOURCE: Personnel Data File as of October 1, 1997