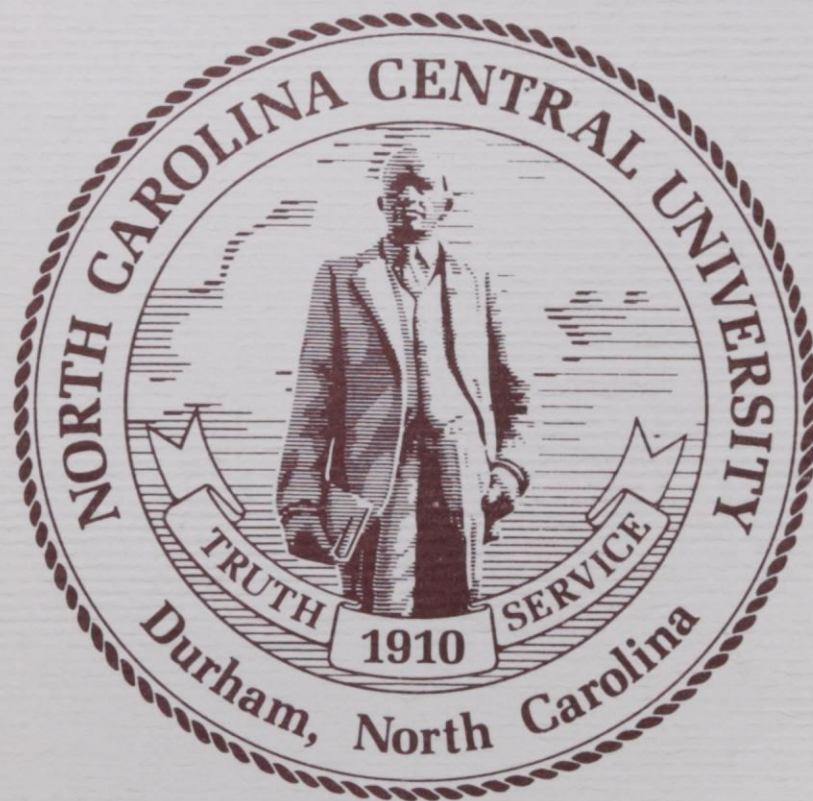


# FACTS

1988 - 1989



James E. Shepard, Founder

**NORTH CAROLINA CENTRAL UNIVERSITY**

OFFICE OF  
RESEARCH, EVALUATION AND PLANNING  
DURHAM, NORTH CAROLINA

# FACTS

1988-89

BY

HELEN L. FAUCETTE  
JOYCE LATHAM  
VALERIE S. L. WILLIAMS

SENIOR ADVISORS:

LINDA K. PRATT  
BRENDA H. ROGERS  
F. MYRON DUNSTON

TECHNICAL ASSISTANT:

COCO E. HUTCHISON

OFFICE OF RESEARCH, EVALUATION, AND PLANNING  
MARCH, 1989

## LIST OF TABLES AND FIGURES

		<u>PAGE</u>
Facts About the University		
TABLE	1: Characteristics of NCCU Facilities, Fall 1988	25
TABLE	2: Revenues and Expenditures for Fiscal Year, 1987-88	28
FIGURE	1: Expenditures by Budget Area Ten-Year Comparison	29
TABLE	3: Assets for Fiscal Year, 1987-88	30
TABLE	4: Student Tuition, Fees and Charges for the 1988-89 Academic Year	31
TABLE	5: Library Staff, Collections and Expenditures, Fiscal Year 1988	32
Facts to Support Planning		
TABLE	6: Degree Programs and Program Tracks	35
TABLE	7: Credit Hours Generated By Department for Academic Years 1983-84 Through 1987-88	40
TABLE	8: Grades Assigned By School (Distribution of Percentages)	42
TABLE	9: Profile of College of Arts and Sciences	43
TABLE	10: Profile of School of Business	44
TABLE	11: Profile of School of Law	45
TABLE	12: Profile of School of Library and Information Sciences	46
TABLE	13: Students Enrolled, Graduated, Suspended, and Not Enrolled One Year After Initial Entry (Percentages)	47
TABLE	14: Graduation Percentages for First-Time Freshmen, 1977-1984	48
TABLE	15: First-Time Freshmen Enrolled or Graduated at NCCU and in the UNC System (Percentages)	49
TABLE	16: Comparison of Faculty Salaries	50
Facts About Students		
TABLE	17: Number of Student Applications, Acceptances and Enrollees, Fall 1988	53
FIGURE	2: Ten-Year Comparison of Undergraduate Applicants, Acceptances and Enrollees	54
FIGURE	3: Ten-Year Comparison of Graduate and First Professional Applicants, Acceptances and Enrollees	55
FIGURE	4: Comparison of Freshmen Applicants, Acceptances, and Enrollees, 1980-88	56
TABLE	18: Undergraduate Transfers Into NCCU, 1987-88	57
TABLE	19: Distribution of First-Time Freshmen by State, Fall 1988	58
FIGURE	5: Geographic Origin by State, First-Time Freshmen, Fall Semester 1988	59

TABLE	20:	Distribution of North Carolina First-Time Freshmen by County, Fall 1988	60
FIGURE	6:	Geographic Origin by County, First-Time Freshmen, Fall Semester 1988	61
TABLE	21:	Distribution of SAT Scores of Entering Freshmen	62
FIGURE	7:	Average Freshmen SAT Scores, 1978-88	63
TABLE	22:	High School Class Rank of Entering Freshmen, 1984-1988	64
TABLE	23:	Average Age of First-Time Freshmen, 1981-1988	64
TABLE	24:	General Characteristics of Enrollment, 1986-1988	65
TABLE	25:	Summary of General Characteristics, Fall 1988	66
TABLE	26:	Sex Distribution of Headcount Enrollment, 1926-1988	67
TABLE	27:	Racial Composition of Headcount Enrollment, 1979-1988	68
TABLE	28:	Geographic Origin of Students, 1980-1988	69
TABLE	29:	Distribution of Students by State, Fall 1988	70
FIGURE	8:	Geographic Origin by State, Undergraduate and Graduate Students, Fall 1988	71
TABLE	30:	Distribution of North Carolina Students by County, Fall 1988	72
FIGURE	9:	Geographic Origin by County, Undergraduate and Graduate Students, Fall 1988	73
TABLE	31:	Mean Age of Enrolled Students, 1976-1988	74
TABLE	32:	Undergraduate Enrollment by Age, 1988	75
TABLE	33:	Graduate Enrollment by Age, 1988	75
TABLE	34:	Undergraduate Degrees Conferred by Field of Study, 1982-1988	76
TABLE	35:	Graduate Degrees Conferred by Field of Study, 1982-1988	77
TABLE	36:	Characteristics of Graduated Students, 1988	78
TABLE	37:	Student Financial Aid, 1987-1988	79
TABLE	38:	Financial Aid Awards, 1984-1988	80

#### Facts About Faculty and Staff

TABLE	39:	Instructional Staffing Patterns by Department and Rank, Fall 1984-1988	83
TABLE	40:	Tenure for Full-Time Faculty by Department, Fall 1988	87
TABLE	41:	Tenure for Full-Time Faculty by Rank and Sex, Fall 1984-1988	88
FIGURE	10:	Ten-Year Change of Rank and Tenure Status Full-Time Faculty for 1978 and 1988	89
TABLE	42:	Highest Earned Degree for Full-Time Faculty by Department, Fall 1988	90
TABLE	43:	Summary of Highest Earned Degrees for Full-Time Faculty, 1983-1988	91
TABLE	44:	Race and Sex of Full-Time Faculty by Department and Academic Rank, Fall 1988	92
TABLE	45:	Mean Salaries by Rank, 1970-1988	96
TABLE	46:	Mean Salaries of Professors by Race and Sex, 1976-1988	97

TABLE	47:	Mean Salaries of Associate Professors by Race and Sex, 1976-1988	97
TABLE	48:	Mean Salaries of Assistant Professors by Race and Sex, 1976-1988	98
TABLE	49:	Mean Salaries of Instructors by Race and Sex, 1976-1988	98
TABLE	50:	Summary of Mean Salaries for Fall 1988 by Academic Rank, Race, and Sex	99
TABLE	51:	Full-Time EPA and SPA Employees by Occupational Activity Category, Race and Sex, Fall 1988	100
TABLE	52:	New Full-Time EPA and SPA Employees By Occupational Activity Category, Race and Sex, Fall 1988	101
TABLE	53:	Retirements, Resignations and Dismissals of Full-Time EPA and SPA Employees, Fall 1988	102
TABLE	54:	Promotions of Full-Time EPA and SPA Employees, Fall 1988	103
TABLE	55:	Summary of Mean Salaries for Fall 1988 By Occupational Activity Category, Race and Sex	104

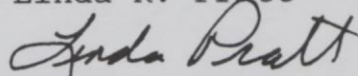
## PREFACE

FACTS is North Carolina Central University's fact book. It is produced by the Office of Research, Evaluation and Planning to provide faculty, staff and administrators with a common base of data and information about the University. FACTS has been produced annually since 1969. Over that 20 year period, numerous changes in format have been made. All changes are directed toward the goal of providing information useful in planning, in reporting and in proposal preparation.

All tables are now Lotus 1-2-3 files. We will be happy to supply copies of the files to anyone in the University community who is interested. Please call the Office of Research, Evaluation and Planning with your request.

Ms. Helen Faucette, Ms. Valerie Williams and Ms. Joyce Latham have spent many hours preparing FACTS for 1988-89. Dr. Brenda Rogers and Mr. Myron Dunston have assisted in planning and in preparing data for the document. Ms. CoCo Hutchison provided technical support. The Office wishes to thank Dr. Charles Nicholson and the Department of Education for loaning us the printer which greatly improved the appearance of the tables. Congratulations and thanks to everyone involved in the production.

Linda K. Pratt



Associate Vice Chancellor for  
Academic Affairs for Research,  
Evaluation and Planning

## FACTS ABOUT THE UNIVERSITY

### LIST OF TABLES AND FIGURES

TABLE	1:	Characteristics of NCCU Facilities, Fall 1988	25
TABLE	2:	Revenues and Expenditures for Fiscal Year, 1987-88	28
FIGURE	1:	Expenditures by Budget Area Ten-Year Comparison	29
TABLE	3:	Assets for Fiscal Year, 1987-88	30
TABLE	4:	Student Tuition, Fees and Charges for the 1988-89 Academic Year	31
TABLE	5:	Library Staff, Collections and Expenditures, Fiscal Year 1988	32

## NORTH CAROLINA CENTRAL UNIVERSITY

### STATEMENT OF PURPOSE

#### History of North Carolina Central University

North Carolina Central University, a state-supported liberal arts institution, was chartered in 1909 as a private institution and opened to students on July 10, 1910. It was founded by Dr. James E. Shepard. From the beginning, when it was known as the National Religious Training School and Chautauqua, its purpose has been the development in young men and women of the character and sound academic training requisite for real service to the nation. To this end, the training of all students has been entrusted to the most capable teachers available.

The institution's early years were characterized by a wealth of enthusiasm and high endeavor, but not of money. Private donations and student fees constituted the total financial support of the school, and the heavy burden of collecting funds rested on the President.

In 1915 the school was sold and reorganized, then becoming the National Training School. During this period of its history Mrs. Russell Sage of New York was a generous benefactor of the school.

In 1923 the General Assembly of North Carolina appropriated funds for the purchase and maintenance of the school; thus in that year it became a publicly-supported institution, and was renamed Durham State Normal School. Two years later the General Assembly converted it into the North Carolina College for Negroes, dedicating it to the offering of liberal arts education and the preparation of teachers and principals of secondary schools.

At its 1927 session, the General Assembly began a program of expansion of the college plant to conform to the needs of an enlarged academic program. The interest of the Honorable Angus W. McLean, then Governor of North Carolina, and his belief in the institution aided greatly in the promotion of this program. State appropriations were supplemented by a generous gift from B. N. Duke, and by contributions from citizens of Durham in 1929. The 1930's afforded federal grants and State appropriations for a new program of physical expansion and improvement of educational facilities; this program continued until the beginning of World War II.

The College was accredited by the Southern Association of Colleges and Secondary Schools as an "A" class institution in 1937, and was admitted to membership in this association in 1957.



The General Assembly of 1939 authorized the establishment of graduate work in liberal arts and the professions. Pursuant thereto, graduate courses in the Arts and Sciences were first offered in that same year; the School of Law began operation in 1940; and the School of Library Science was established in 1941.

In 1947 the General Assembly changed the name of the institution to North Carolina College at Durham.

On October 6, 1947, Dr. Shepard, the founder and President of the College, died. The Board of Trustees appointed an interim committee consisting of Dr. Albert E. Manley, Dean of the College of Arts and Sciences; Miss Ruth G. Rush, Dean of Women; and Dr. Albert L. Turner, Dean of the School of Law, to administer the affairs of the institution until the election of the second president.

On January 20, 1948, Dr. Alfonso Elder was elected President of the institution. At the time of his election, Dr. Elder was serving as head of the Graduate Department of Education and had formerly been Dean of the College of Arts and Sciences. Dr. Elder retired September 1, 1963.

Dr. Samuel P. Massie was elected as the third President of the College on August 9, 1963. Dr. Massie came to the institution from Washington, D. C., where he was Associate Program Director for Undergraduate Science Education of the National Science Foundation and Professor and Chairman of the Department of Pharmaceutical Chemistry at Howard University. He resigned on February 1, 1966.

The Board of Trustees appointed an interim committee consisting of William Jones, Business Manager, Dr. Helen G. Edmonds, Graduate Dean; and Dr. William H. Brown, Professor of Education, to administer the affairs of the institution until the fourth president took office.

On July 20, 1966, Dr. Albert N. Whiting was named fourth president of the institution. he came to North Carolina College from Baltimore, Maryland, where he had been Dean of the Faculty of Morgan State College. Dr. Whiting served as President and Chancellor from July 1, 1967, until his retirement June 30, 1983.

In 1969, the General Assembly changed the name of the institution to North Carolina Central University. On July 1, 1972, North Carolina Central University became a constituent institution of the University of North Carolina.

On July 1, 1983, Dr. LeRoy T. Walker, became Interim Chancellor of the University. He had served the institution as Chairman of the Department of Physical Education and

Recreation, Head Track Coach, and Vice Chancellor for University Relations. At its February 1986 meeting, the University of North Carolina Board of Governors, on the request of the University's Board of Trustees, decreed that Dr. Walker was Chancellor of the University rather than Interim Chancellor and made that action retroactive to the beginning of his term. Dr. Walker's tenure as chief administrator ended June 30, 1986.

Dr. Tyronza R. Richmond, formerly Dean of the School of Business, succeeded Dr. Walker as Chancellor on July 1, 1986. Prior to his arrival at North Carolina Central University, Dr. Richmond was Associate Dean and Professor at the School of Business and Public Administration at Howard University.

#### Official Statement of Purpose

The statement of purpose of North Carolina Central University (NCCU) appearing on page 14 of the current catalog was adopted by the Board of Trustees on March 11, 1987. This statement was developed after Chancellor Tyronza R. Richmond, in the first year of his administration, involved the Student Government Association, the NCCU Executive Council, the Faculty Senate, the NCCU National Alumni Association, staff members, community leaders, and the Self-Study Steering Committee in an intensive reexamination of the institution's mission and purpose. This statement was reaffirmed by the Board of Trustees on November 16, 1988.

North Carolina Central University is a comprehensive university offering programs at the bachelor's and master's levels, and at the first professional level in law.

The primary mission of North Carolina Central University is to provide its students with an educational environment that will stimulate their intellectual curiosities; enhance and develop academic and professional skills; instill a sense of pride, dignity, and discipline; and promote a consciousness of social responsibility and dedication to the advancement of the general welfare of the people of North Carolina, of the United States, and of the world.

Historically, the majority of the constituents served by North Carolina Central University have been black. While the University will continue to educate its traditional clientele, it

will continue, and increasingly seek, to be an educational resource to all of the people in its service area.

The University community recognizes that its student enrollment will reflect more diversity in all respects. This new diversity will constitute a major challenge in the faculty's responsibility of teaching, in research, in the development of curricula, in the availability of programs which support learning, in the University's outreach, and in the effectiveness of its administrative units. While the teaching of students is the University's primary focus, research for the benefit of the broader community is vital to the mission and must be pursued vigorously. The continued development of intellectual skills and self-discipline, by all who reap the benefits of the University, comprises the core of every aspect and phase of University life.

Finally, the University makes every effort to assure that the paths to learning at North Carolina Central University are open to all who by their ability and motivation show promise of success.

A. Institutional Goals

1. To improve enrollment management procedures including identifying prospective students, developing an effective marketing and recruiting strategy, admitting students with good chances of academic success and retaining those students to graduation.
2. To develop and maintain a climate where there is a faculty commitment to the general welfare of the institution, open and candid communication, open and amicable airing of differences and mutual trust and respect among students, faculty, staff, and administrators.
3. To encourage, support and reward outstanding performance in teaching, research, and creative activities.
4. To provide administrative support for coordination

of research activities through workshops, seminars, and consultation with individuals and departments.

5. To support the development and accreditation of professional schools and programs by providing priority in allocation of resources, including faculty slots and salary enhancement.
6. To develop an effective electronic communication network on campus which will provide access to administrative and academic computer services and the library computing network.
7. To develop interdisciplinary programs which will attract mature and non-traditional students to North Carolina Central University, assuming that the greatest percentage of growth in enrollment for the next five years will come from this population.
8. To further promote an image of a dynamic, innovative institution with programs that are responsive to the needs of all the people in its service area.

#### B. Educational Goals

1. To assure that undergraduate students become acquainted with their cultural heritage as a framework for their understanding and relating to the existing social order.
2. To assure that undergraduate students acquire a sense of history, and understanding of science, and appreciation of the fine and performing arts, and an understanding and appreciation of other cultures.
3. To encourage among all students an attitude about learning and intellectual work which includes familiarity with research and problem solving methods, the ability to employ critical thinking skills, the ability to synthesize knowledge from many sources, the enhancement of communication skills, the capacity for self-directed learning, and a commitment to life-long learning.
4. To assure that all students acquire both general and specialized knowledge, thus contributing to high intellectual standards on campus and preparing students for advancement after graduation.

## STATEMENT OF ACCREDITATION

North Carolina Central University is accredited by the Commission on Colleges of the Southern Association of Colleges and Schools to award Bachelor's degrees and Master's degrees.

The School of Law is accredited by the American Bar Association. The program in Library Science is accredited by the American Library Association and the program in Nursing by the Accrediting Services, National League for Nursing, Inc. Programs at the bachelor's and master's levels in early childhood education, elementary teaching, secondary teaching, and K-12 teaching; and at the master's level in educational communication and information technology, school principalship, supervision/curriculum development, and guidance counseling are accredited by the National Council for Accreditation of Teacher Education (NCATE). All of these specialized accrediting bodies are recognized by the Council on Postsecondary Accreditation and the U. S. Department of Education.

Teacher Education Programs are approved by the North Carolina State Department of Public Instruction. The North Carolina Board of Nursing approves the Nursing Program. The School of Law is approved by the North Carolina State Bar Council.

## NON-DISCRIMINATION STATEMENT OF POLICY

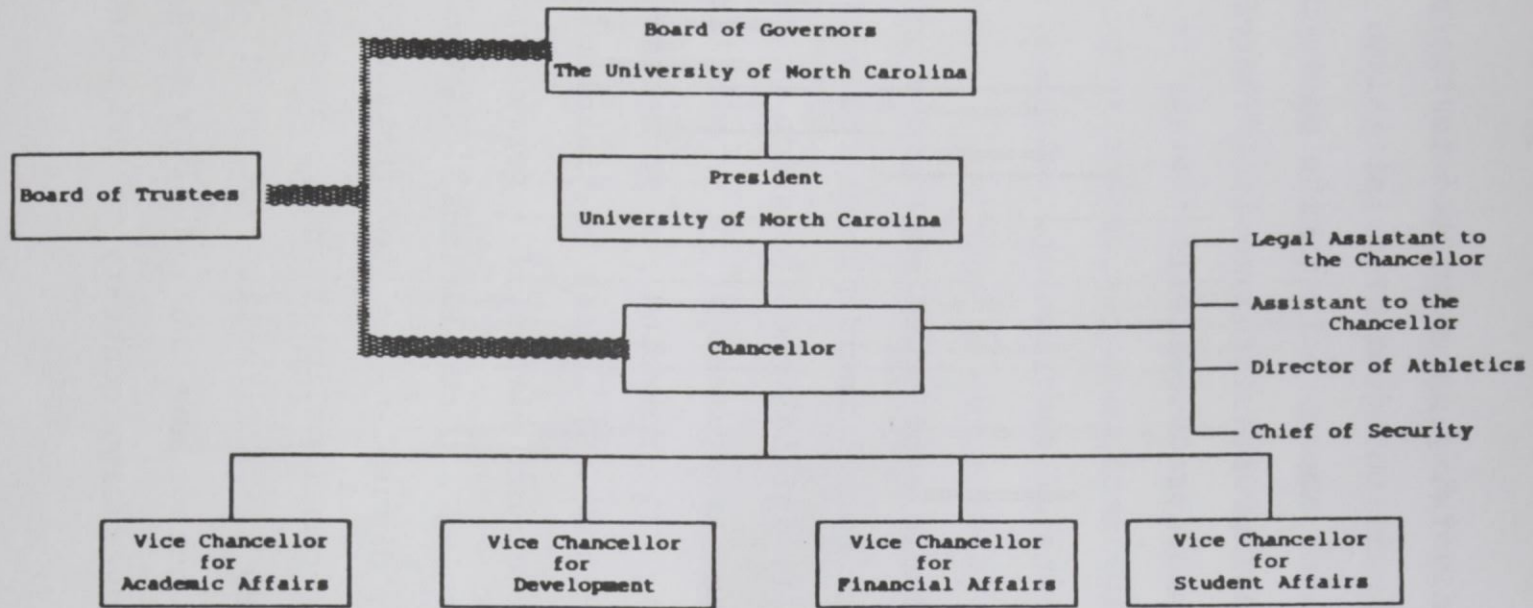
This University is committed to the principle that the employees shall be identified initially, and thereafter differentiated among, only on the basis of good faith assessments of individual professional merit. Therefore, University policy and employment practices will operate to prevent discrimination, affecting any employee or prospective employee, which is based on considerations of race, color, religion, sex, handicap, or national origin.

The principle of equal employment opportunity shall apply with respect to all incidents of the employment relationship, including (1) initial consideration of employment, (2) job placement and assignment of responsibilities, (3) evaluation of performance, (4) promotion and advancement, (5) compensation and fringe benefits, (6) access to training and other professional development opportunities, (7) formulation and application of personnel rules and regulations, (8) access to facilities, and (9) layoff, discipline and termination.

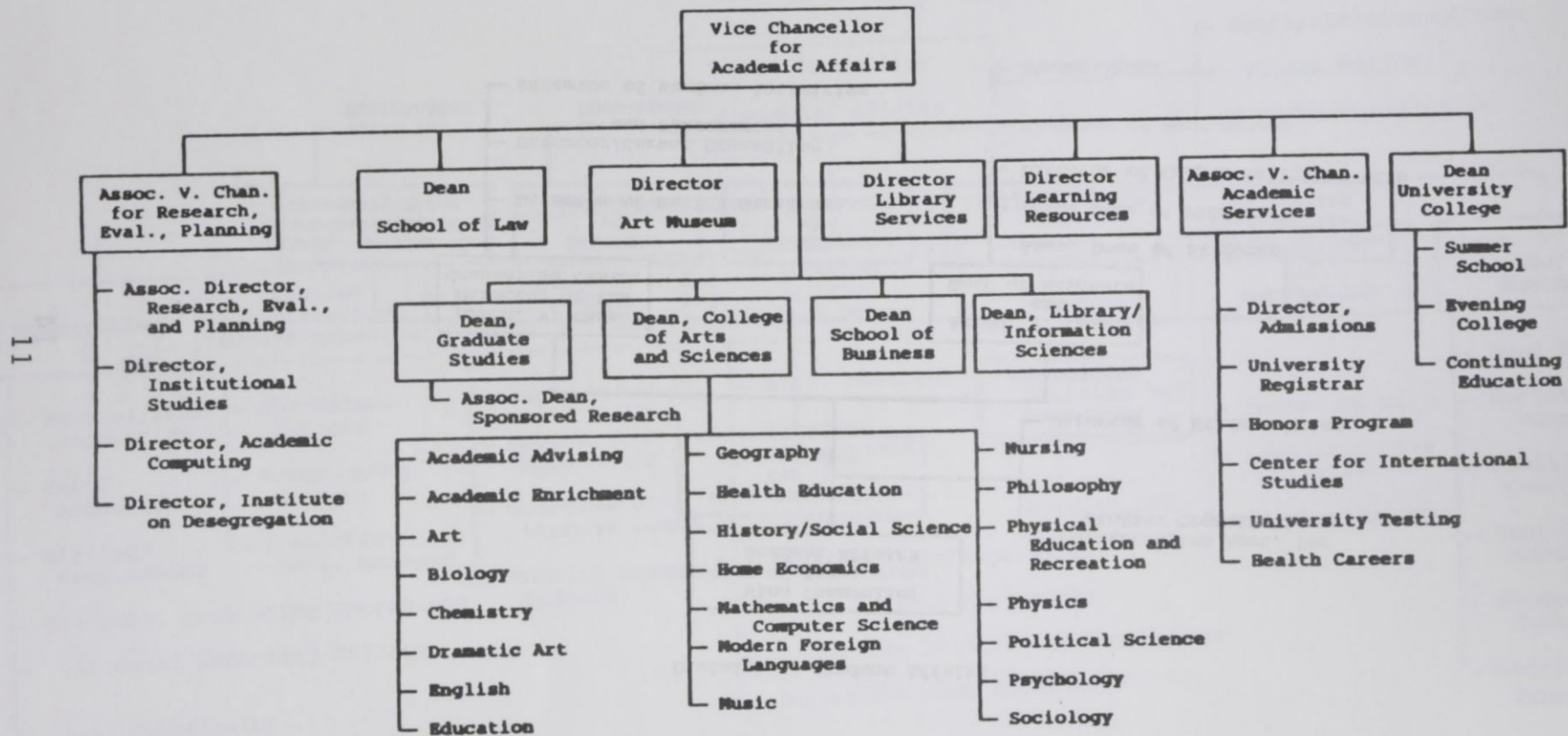
The personnel policies and practices of this University are monitored by the Affirmative Action Officer continuously to determine whether any individual or class has been or is being affected adversely, contrary to the principle of equal employment opportunity.

All employees of this University are expected to support the principle of and contribute to the realization of equal employment opportunity.

ORGANIZATIONAL CHART  
NORTH CAROLINA CENTRAL UNIVERSITY  
1988-89



Division of Academic Affairs



11



**Division of Development**

**Vice Chancellor  
for  
Development**

**Foundation  
Accountant**

**Asst. to Vice.Ch.  
and Director of  
Community Relat.**

**Director  
of  
Development**

**Director  
of  
Alumni Affairs**

**Director  
of  
Public Relations**

**Director of Univ.  
Printing and  
Duplicating**

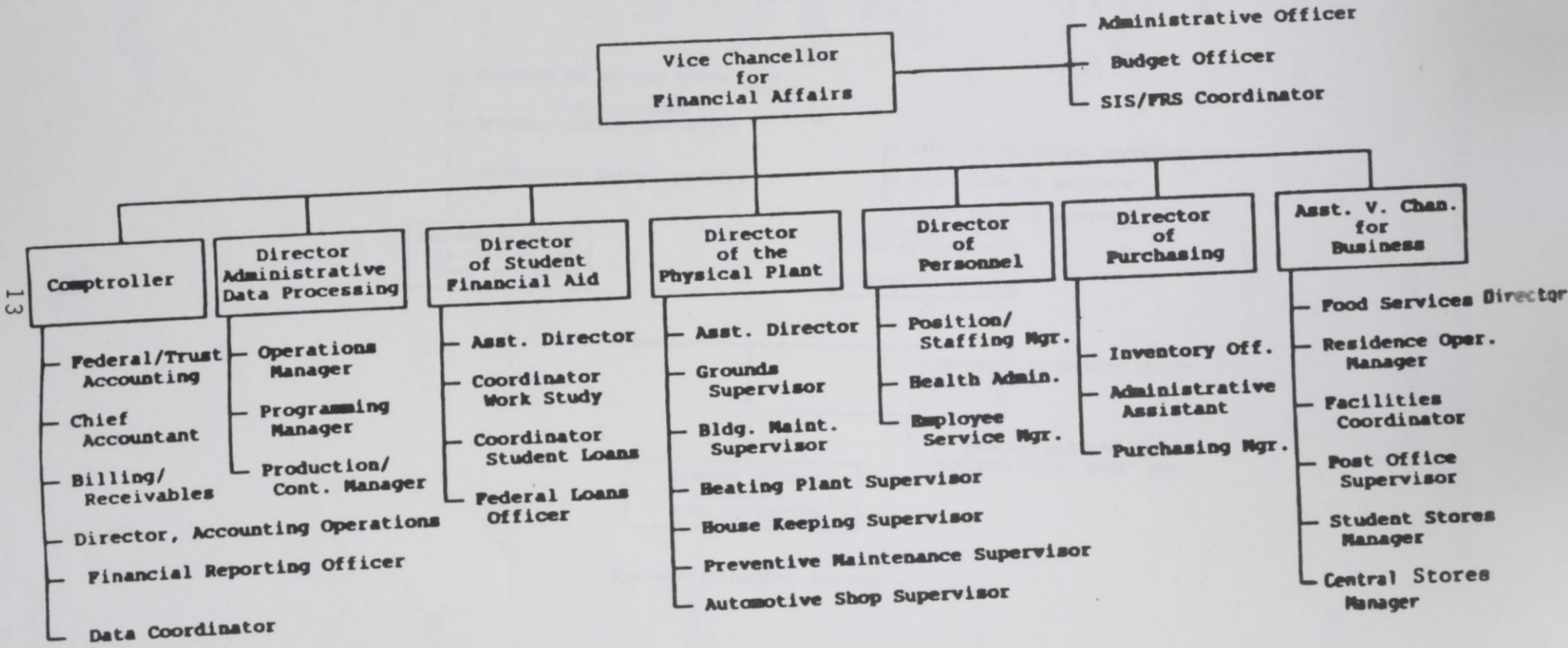
**Title III  
Coordinator**

**Assoc. Director of  
Development**

**Director of News Bureau**

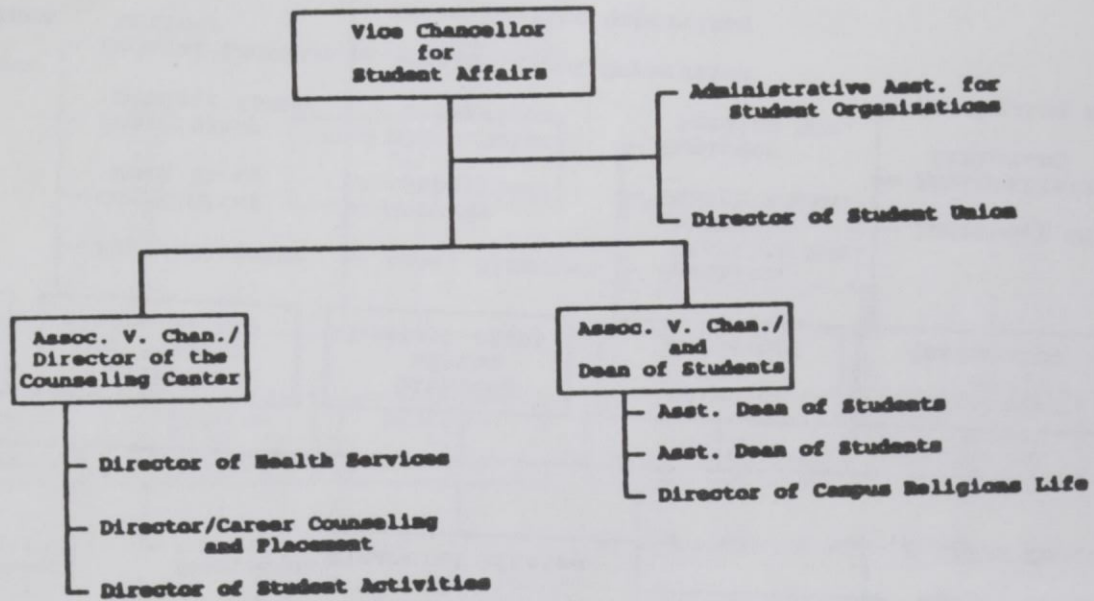
**Photographer**

Division of Financial Affairs



31

Division of Student Affairs



THE UNIVERSITY OF NORTH CAROLINA

BOARD OF GOVERNORS

ROBERT L. JONES  
SAMUEL H. POOLE  
ASA T. SPAULDING, JR.

CHAIRPERSON  
VICE-CHAIRPERSON  
SECRETARY

CLASS OF 1989

GENEVA J. BOWE  
PHILIP G. CARSON  
WALTER R. DAVIS  
R. PHILLIP HAIRE  
JULIA TAYLOR MORTON  
ASA T. SPAULDING, JR.  
DAVID J. WHICHARD, II  
WILLIAM K. WOLTZ

MURFREESBORO  
ASHEVILLE  
MIDLAND, TX  
SYLVA  
LINVILLE  
DURHAM  
GREENVILLE  
MOUNT AIRY

CLASS OF 1991

IRWIN BELK  
WAYNE A. CORPENING  
J. EARL DANIELEY  
CHARLES D. EVANS  
JOAN S. FOX  
JAMES E. HOLSHOUSER, JR.  
JOY J. JOHNSON  
ROBERT L. JONES  
JOHN R. JORDAN, JR.  
BETTY R. MCCAIN  
SAMUEL H. POOLE  
W. TRAVIS PORTER  
J. AARON PREVOST  
LOUIS T. RANDOLPH  
JOSEPH E. THOMAS  
GUS H. TULLOSS

CHARLOTTE  
WINSTON-SALEM  
ELON COLLEGE  
NAGS HEAD  
OXFORD  
SOUTHERN PINES  
FAIRMONT  
RALEIGH  
RALEIGH  
WILSON  
WASHINGTON, D. C.  
DURHAM  
HAZELWOOD  
WASHINGTON  
VANCEBORO  
ROCKY MOUNT

CLASS OF 1993

RODERICK D. ADAMS  
CHARLES Z. FLACK, JR.  
JOHN A. GARWOOD  
REGINALD F. MCCOY  
MARTHA F. MCNAIR  
D. SAMUEL NEILL  
MACEO A. SLOAN  
RUTH D. WOODS

DURHAM  
FOREST CITY  
NORTH WILKESBORO  
LAURINBURG  
WINSTON-SALEM  
HENDERSONVILLE  
DURHAM  
LUMBERTON

MEMBER EMERITI

WILLIAM A. DEES, JR.  
WILLIAM A. JOHNSON

GOLDSBORO  
LILLINGTON

THE UNIVERSITY OF NORTH CAROLINA  
OFFICERS OF GENERAL ADMINISTRATION

1988-89

C. D. SPANGLER, JR. PRESIDENT

TRACEY C. AVINGER ADMINISTRATIVE ASSISTANT TO THE PRESIDENT

RICHARD H. ROBINSON, JR. ASSISTANT TO THE PRESIDENT  
FOR LEGAL AFFAIRS

LEE CULPEPPER SPECIAL ASSISTANTS TO THE PRESIDENT  
DAVID N. EDWARDS, JR.  
ELIZABETH C. BUNTING

DAVID G. MARTIN, JR. SECRETARY OF THE UNIVERSITY

DAVID PFAFF ACTING ASSISTANT SECRETARY OF THE UNIVERSITY

FRANCES H. HOPE ASSISTANT SECRETARY  
OF THE BOARD OF GOVERNORS

ACADEMIC AFFAIRS DIVISION

RAYMOND H. DAWSON VICE PRESIDENT  
FOR ACADEMIC AFFAIRS  
AND SENIOR VICE PRESIDENT

ARTHUR PADILLA ASSOCIATE VICE PRESIDENTS  
DONALD J. STEDMAN FOR ACADEMIC AFFAIRS  
ROBERT W. WILLIAMS, JR.

DONNA BENSON ASSISTANT VICE PRESIDENT FOR ACADEMIC AFFAIRS

LOUIS T. PARKER, JR. ASSISTANT VICE PRESIDENT  
FOR ACADEMIC AFFAIRS  
AND DIRECTOR, UNC  
EDUCATIONAL COMPUTING SERVICE

EUGENE MCDOWELL DIRECTOR, ASHEVILLE  
GRADUATE CENTER

COMMUNICATIONS DIVISION

WYNDHAM ROBERTSON VICE PRESIDENT  
FOR COMMUNICATIONS

JOHN W. DUNLOP

DIRECTOR, THE UNIVERSITY OF N. C.  
CENTER FOR PUBLIC TELEVISION

CHANCY KAPP

ASSOCIATE DIRECTOR FOR PROGRAMMING

JONI B. WORTHINGTON

DIRECTOR OF INFORMATION SERVICES

FINANCE DIVISION

L. FELIX JOYNER

VICE PRESIDENT  
FOR FINANCE

HUGH BUCHANAN, JR.  
KENNIS R. GROGAN  
ELLEN H. KEPLEY

ASSOCIATE VICE PRESIDENTS  
FOR FINANCE

LEON M. ENNIS, JR.  
JAMES O. SMITH  
A. P. WINFREY, III

ASSISTANT VICE PRESIDENTS  
FOR FINANCE

JEFFREY R. DAVIS

ASSISTANT VICE PRESIDENT FOR FINANCE  
AND SERVICE OFFICER

J. SIBLEY DORTON, JR.

ASSISTANT VICE PRESIDENT  
FOR FINANCE AND TREASURER

HENRY A. HOLMES

ASSISTANT VICE PRESIDENT  
FOR FINANCE AND UNIVERSITY  
PROPERTY OFFICER

PLANNING DIVISION

ROY CARROLL

VICE PRESIDENT FOR PLANNING

GARY T. BARNES  
JOHN F. COREY

ASSOCIATE VICE PRESIDENTS  
FOR PLANNING

E. BRUCE SIGMON, JR.

ASSISTANT VICE PRESIDENT  
FOR PLANNING

ROBERT F. HILL, JR.

DIRECTOR OF INFORMATION SYSTEMS

LINDA BALFOUR

DIRECTOR OF DATA COLLECTION AND REPORTING

MARY ELLEN TAYLOR

COORDINATOR OF SPECIAL STUDIES

PUBLIC AFFAIRS DIVISION

JAY M. ROBINSON

VICE PRESIDENT FOR  
PUBLIC AFFAIRS

THE UNIVERSITY OF NORTH CAROLINA  
OFFICERS OF GENERAL ADMINISTRATION

1988-89

C. D. SPANGLER, JR. PRESIDENT

TRACEY C. AVINGER ADMINISTRATIVE ASSISTANT TO THE PRESIDENT

RICHARD H. ROBINSON, JR. ASSISTANT TO THE PRESIDENT  
FOR LEGAL AFFAIRS

LEE CULPEPPER SPECIAL ASSISTANTS TO THE PRESIDENT  
DAVID N. EDWARDS, JR.  
ELIZABETH C. BUNTING

DAVID G. MARTIN, JR. SECRETARY OF THE UNIVERSITY

DAVID PFAFF ACTING ASSISTANT SECRETARY OF THE UNIVERSITY

FRANCES H. HOPE ASSISTANT SECRETARY  
OF THE BOARD OF GOVERNORS

ACADEMIC AFFAIRS DIVISION

RAYMOND H. DAWSON VICE PRESIDENT  
FOR ACADEMIC AFFAIRS  
AND SENIOR VICE PRESIDENT

ARTHUR PADILLA ASSOCIATE VICE PRESIDENTS  
DONALD J. STEDMAN FOR ACADEMIC AFFAIRS  
ROBERT W. WILLIAMS, JR.

DONNA BENSON ASSISTANT VICE PRESIDENT FOR ACADEMIC AFFAIRS

LOUIS T. PARKER, JR. ASSISTANT VICE PRESIDENT  
FOR ACADEMIC AFFAIRS  
AND DIRECTOR, UNC  
EDUCATIONAL COMPUTING SERVICE

EUGENE MCDOWELL DIRECTOR, ASHEVILLE  
GRADUATE CENTER

COMMUNICATIONS DIVISION

WYNDHAM ROBERTSON VICE PRESIDENT  
FOR COMMUNICATIONS

JOHN W. DUNLOP

DIRECTOR, THE UNIVERSITY OF N. C.  
CENTER FOR PUBLIC TELEVISION

CHANCY KAPP

ASSOCIATE DIRECTOR FOR PROGRAMMING

JONI B. WORTHINGTON

DIRECTOR OF INFORMATION SERVICES

FINANCE DIVISION

L. FELIX JOYNER

VICE PRESIDENT  
FOR FINANCE

HUGH BUCHANAN, JR.  
KENNIS R. GROGAN  
ELLEN H. KEPLEY

ASSOCIATE VICE PRESIDENTS  
FOR FINANCE

LEON M. ENNIS, JR.  
JAMES O. SMITH  
A. P. WINFREY, III

ASSISTANT VICE PRESIDENTS  
FOR FINANCE

JEFFREY R. DAVIS

ASSISTANT VICE PRESIDENT FOR FINANCE  
AND SERVICE OFFICER

J. SIBLEY DORTON, JR.

ASSISTANT VICE PRESIDENT  
FOR FINANCE AND TREASURER

HENRY A. HOLMES

ASSISTANT VICE PRESIDENT  
FOR FINANCE AND UNIVERSITY  
PROPERTY OFFICER

PLANNING DIVISION

ROY CARROLL

VICE PRESIDENT FOR PLANNING

GARY T. BARNES  
JOHN F. COREY

ASSOCIATE VICE PRESIDENTS  
FOR PLANNING

E. BRUCE SIGMON, JR.

ASSISTANT VICE PRESIDENT  
FOR PLANNING

ROBERT F. HILL, JR.

DIRECTOR OF INFORMATION SYSTEMS

LINDA BALFOUR

DIRECTOR OF DATA COLLECTION AND REPORTING

MARY ELLEN TAYLOR

COORDINATOR OF SPECIAL STUDIES

PUBLIC AFFAIRS DIVISION

JAY M. ROBINSON

VICE PRESIDENT FOR  
PUBLIC AFFAIRS



RESEARCH DIVISION

JASPER D. MEMORY

VICE PRESIDENT  
FOR RESEARCH

CHARLES L. WHEELER

ASSOCIATE VICE PRESIDENT FOR  
RESEARCH AND DIRECTOR,  
NORTH CAROLINA STATE COMMISSION  
ON HIGHER EDUCATION FACILITIES

RICHARD LINTON

ASSISTANT VICE  
PRESIDENT FOR RESEARCH

EDWIN W. HAUSER

DIRECTOR, INSTITUTE FOR  
TRANSPORTATION RESEARCH AND EDUCATION

STUDENT SERVICES AND SPECIAL PROGRAMS DIVISION

NATHAN F. SIMMS, JR.

VICE PRESIDENT  
FOR STUDENT SERVICES AND  
SPECIAL PROGRAMS

GEORGE A. ANTONELLI  
ELSON S. FLOYD

ASSOCIATE VICE PRESIDENTS FOR  
STUDENT SERVICES AND  
SPECIAL PROGRAMS

GERALD MCCANTS

DIRECTOR OF SPECIAL PROGRAMS

STAN C. BROADWAY

EXECUTIVE DIRECTOR, NORTH  
CAROLINA STATE EDUCATION ASSISTANCE  
AUTHORITY

NORTH CAROLINA CENTRAL UNIVERSITY

BOARD OF TRUSTEES

BERNARD ALLEN	RALEIGH
VICTOR S. BRYANT, JR. (VICE CHAIR)	DURHAM
HELEN G. EDMONDS	DURHAM
J. RICHARD FUTRELL, JR.	ROCKY MOUNT
TED N. GRIFFIN	DURHAM
HENRY C. HAYES	WARRENTON
CHARLES V. HOLLAND (CHAIR)	RALEIGH
KIMBERLY BASSETT (EX-OFFICIO MEMBER)	DURHAM
EVELYN O. SHAW (SECRETARY)	FAYETTEVILLE
JOHN N. SMITH	DURHAM
CARL J. STEWART, JR.	GASTONIA
DAVID W. STITH	DURHAM
WALTER S. TUCKER	WINSTON-SALEM

NORTH CAROLINA CENTRAL UNIVERSITY

OFFICERS AND ADMINISTRATIVE STAFF

1988-1989

OFFICE of the CHANCELLOR

Tyronza R. Richmond, Ph.D.	Chancellor
Acie L. Ward, J.D.	Legal Assistant
William P. Evans, B.S.	Acting Assistant to the Chancellor

Athletics

Christopher Fisher, M.A.	Athletic Director
--------------------------	-------------------

Security

John W. Smith, M.A.	Chief of Security
---------------------	-------------------

ACADEMIC AFFAIRS

Mickey L. Burnim, Ph.D.	Vice Chancellor
Linda K. Pratt, Ph.D.	Associate Vice Chancellor
LaFayette W. Lipscomb, Ph.D.	Associate Vice Chancellor

SCHOOL of GRADUATE STUDIES

Mary M. Townes, Ph.D.	Dean
Rudolph S. Jackson, Ph.D.	Associate Dean for Graduate Studies and Research

COLLEGE of ARTS and SCIENCES

John Ruffin, Ph.D.	Dean
Angelaurelio F. Soldi, Ph.D.	Associate Dean
Mattie E. Moss, Ph.D.	Associate Dean
Lana T. Henderson, Ph.D.	Academic Enrichment Coordinator
Sarah Bell-Lucas, M.A.	Academic Advising Coordinator

Academic Department Chairs

Lana T. Henderson, Ph.D.	Art
Walter H. Pattillo, Ph.D.	Biology
James M. Schooler, Ph.D.	Chemistry
Linda K. Norflett, Ph.D.	Dramatic Arts
Waltz Maynor, Ed.D.	Education
Patsy B. Perry, Ph.D.	English
Woodrow W. Nichols, Jr., Ph.D.	Geography
Theodore R. Parrish, D.P.H. (Acting)	Health Education
Percy E. Murray, Ph.D.	History and Social Sciences
Beverly A. Bryant, Ed.D.	Home Economics
William T. Fletcher, Ph.D.	Mathematics
Henri Armand, Ph.D.	Modern Foreign Languages
Charles H. Gilchrist, Ph.D.	Music

Marian F. Gooding, Ph.D.	Nursing
Robert J. Clack, Ph.D.	Philosophy
Carey B. Hughley, Ph.D.	Physical Education and Recreation
Charles R. Jones, Ph.D.	Physics
Joseph Aicher, Ph.D.	Political Science
Les Brinson, Ph.D.	Psychology
George H. Conklin, Ph.D.	Sociology

SCHOOL of BUSINESS

Sundar W. Fleming, Ph.D.	Dean
Raphael N. Thompson, M.B.A.	Associate Dean for Graduate Programs and Corporate Relations
Youngil Cho, Ph.D.	Associate Dean for Graduate Studies
John V. Turner, M.Ed.	Associate Dean for Student Affairs

SCHOOL of LAW

Louis Westerfield, L.L.M.	Dean
Irving L. Joyner, J.D.	Associate Dean
Mark W. Morris, J.D.	Assistant Dean
Janice L. Mills, J.D.	Assistant Dean

SCHOOL of LIBRARY and INFORMATION SCIENCE

Benjamin F. Speller, Jr., Ph.D.	Dean
---------------------------------	------

UNIVERSITY COLLEGE

George W. Reid, Ph.D.	Dean
-----------------------	------

RESEARCH, EVALUATION and PLANNING

Linda K. Pratt, Ph.D.	Associate Vice Chancellor
Brenda H. Rogers, Ph.D.	Associate Director
F. Myron Dunston, M.A.	Director, Institutional Studies
Beverly W. Jones, Ph.D.	Director, Institute on Desegregation
Robert D. Montgomery, M.A.	Director, Academic Computing

ACADEMIC SERVICES

LaFayette W. Lipscomb, Ph.D.	Associate Vice Chancellor
Nancy R. Rowland, M.A.	Director of Admissions
James W. Pierce, M.A.	University Registrar
Grace Cooke	Associate Registrar
Mildred Mundine	Assistant Registrar
Lula G. Thorpe, B.A.	Regional Director, Health Careers
Eugene A. Eaves, Ph.D.	Director, Honors Program
	and Director, Center for International
Sherry M. Cole, Ph.D.	Director, University Testing

ART MUSEUM

Norman E. Pendergraft, M.A.C.T. Director

LEARNING RESOURCES

Marvin E. Duncan, Ph.D. Director

LIBRARY SERVICES

Floyd C. Hardy, Ph.D. Head Librarian

DEVELOPMENT

Robert S. Poole, B.A.	Vice Chancellor
Phyllis Joyner-Sims, M.P.H.	Assistant to the Vice Chancellor for Development/Director of University and Community Relations
Alex M. Rivera, B.A.	Director of Public Relations
David H. Witherspoon, B.A.	Director of News Bureau
E. Theresa Taylor, B.A.	Director of Development
Renee Wright, B.A.	Assistant Director of Development
Ellis H. Smith, M.A.	Director of Alumni Affairs
Evelyn D. Fuller, B.A.	Assistant to Title III Coordinator
Marshall T. Mitchell	Director of Duplicating/Copying

FINANCIAL AFFAIRS

Herbert N. Watkins, Ph.D.	Vice Chancellor
Madeline J. Daubert, M.L.S.	SIS/FRS Coordinator
Ruby Pittman, M.B.A.	Budget Officer
Duncan J. Floyd, B.S.	Director of Administrative Data Processing Operations Manager Programming Manager Production & Control Manager
Arthur O. Worthy	Director of Financial Aid
Donald R. Nolen, M.P.H.	Assistant Director of Financial Aid
Delores M. Lyons, B.A.	College Work Study Coordinator
Lola T. McKnight, B.S.	Student Loans Coordinator
Lillian B. Downey	Federal Loans Officer
Franklin D. Holloway	Comptroller
Vernestine B. Thorpe	Assistant to Comptroller for Federal and Trust Accounting
Lisa B. Mitchell, B.S.	Payroll Supervisor
Nathaniel Hall, B.S.	Director of Accounting Operations
Shirley D. Brown, B.S.	Chief Accountant
Alyce P. Little, B.B.A.	Billings/Receivables
Ralph E. Fennell, B.S.C.	Financial Reporting Officer
William K. James	
Jacqueline L. Scurlock	
Linda S. Belton	

Norma P. Smith	Data Coordinator
William E. McDonald, B.S.E.E.	Physical Plant Director
VACANT	Assistant Physical Plant Director
Larry M. Hines	Ground Supervisor
George Webb, Jr.	Central Heating Plant Supervisor
Hardy White, A.S.	Housekeeping Supervisor
Randolph H. Walker, B.S.	Preventive Maintenance Supervisor
Lebbie E. Bumpass	Building Maintenance Supervisor
James S. Harrington	Automotive Shop Supervisor
VACANT	HVAC Supervisor
Joyce C. Page, M.A.	Director of Purchasing
Robert Curtis, Jr.	Central Stores Storeroom Manager
Eva Vanessa Justice, M.A.	Field Inventory Officer
Sheila Stone	Administrative Assistant
Shirley B. Ragland, M.A.	Purchasing Manager
Robert P. Smith, B.S.	Assistant Vice Chancellor for Business
Chester Ray, Jr.	Post Office Manager
Edna L. Harrington, B.S.	Manager of Student Stores
Shirley M. Green, M.A.	Residence Operations Director
Phyllis F. Shumate	Dormitory Director
Boyd S. Taylor, M.S.	Food Service Director
Carroll L. Wright, B.S.	Facilities Maintenance Coordinator
Mavis B. Lewis, B.S.	Personnel Director
Ron D. Reaves, B.S.	Position/Staffing Manager
Carolyn J. Thomas, B.S.	Health/Benefits Administrator
Larry D. Bowens, J.D.	Employee Services Manager

#### STUDENT AFFAIRS

Roland L. Buchanan, Ph.D.	Vice Chancellor
Roger G. Bryant, Ed.D.	Associate Vice Chancellor and Dean of Students
Evelyn C. Deck, M.A.	Assistant Dean of Students
Milton L. Lewis, J.D.	Assistant Dean of Students
Paige L. Chargois	Director of Campus Religious Life
Glen R. Martin, Ed.D.	Associate Vice Chancellor and Director of Counseling Center
Joseph P. Dempsey, D.Min.	Associate Director of Counseling Center
VACANT	Director of Career Counseling and Placement Center
Curtis Daye, M.A.	Student Activities Officer
Thurman Prescott, Jr., B.A.	Director of Student Union
Marcono R. Hines, M.D.	Director of Student Health Services

#### FACULTY SENATE

Richard Mizelle, Ph.D.	Chair
------------------------	-------

TABLE 1

## CHARACTERISTICS OF NCCU FACILITIES, FALL 1988

## INSTRUCTIONAL FACILITIES

YEAR COMPLETED	NAME	ASSIGNABLE SQUARE FT.	CLASS ROOMS	CLASS LABS	OTHER LABS	OFFICES
1930	Alexander Dunn	12,697	5		0	28
1937	Duke Auditorium	10,566			1	2
1937	Jones Bldg. School	12,445	0			16
1937	Robinson Science	16,445	11	6	3	21
1940	Women's Gym	13,421				1
1950	Edmonds Classroom Building	14,657	11		4	44
1950	McDougald Gym	35,934	4			8
1950	Music and Fine Arts	14,736	3	12		7
1950	Shepard Library	38,735	4			23
1952	Dent Home Economics	13,064	7	2	5	13
1953	Home Econ. Practice House	2,870				13
1955	Taylor Education Bldg.	25,510	13	1	3	47
1956	Lee Biology Building	21,068	5	8	29	14
1956	Willis Commerce Bldg.	25,113	8	7		56
1957	Biology Greenhouse	440		1		
1969	1910 Fayetteville St.	454			1	
1969	Hubbard Chemistry	19,082	4	10	9	10
1976	Farrison-Newton Com. Bldg.	51,898	28	4	4	67
1976	Edwards Music Bldg.	14,984	4	2	13	19
1976	Shepard Library Addition	37,004				3
1980	Turner Law School	50,841	7		1	43
1982	Health Sciences Bldg.	28,784	12	3	5	26
1984	Criminal Justice Bldg.	17,837	12	0	3	23
1985	Walker P. E. Complex	102,013	11	4	1	30
TOTAL INSTRUCTIONAL FACILITIES		580,598	149	60	82	514

SOURCE: North Carolina Facilities Inventory and Space Utilization Report, Fall 1987

TABLE 1  
(continued)

CHARACTERISTICS OF NCCU FACILITIES, FALL 1988

ADMINISTRATIVE/FACULTY/STUDENT SERVICE FACILITIES

YEAR COMPLETED	NAME	ASSIGNABLE SQUARE FT.	OFFICES
1925	Admissions Office	2,487	6
1929	Hoey Administration Building	19,643	84
1937	Cottage 1	2,028	8
1937	Jordan House	1,747	8
1937	Personnel Building	1,557	5
1937	ROTC 517 George St.	1,730	7
1945	Quick Copy Center	3,625	10
1950	Central Heating Plant	0	
1950	Old Health Building	15,253	2
1956	McDougald House-Admissions	3,410	8
1963	521 Nelson St.--Black History Center	1,150	
1963	525 Nelson St.--Physical Plant Annex	813	4
1965	Storage Building	11,694	1
1966	Pearson Cafeteria	21,686	0
1968	Elder Student Union	26,543	17
1969	Bowling Alley	5,358	
1977	Physical Plant/Security	7,996	12
1983	Cafeteria Annex	2,824	4
TOTAL ADMINISTRATIVE/FACULTY/ STUDENT SERVICES FACILITIES		129,544	176



TABLE 1  
(continued)

CHARACTERISTICS OF NCCU FACILITIES, FALL 1988

RESIDENTIAL FACILITIES

YEAR COMPLETED	NAME	ASSIGNABLE SQUARE FT.	OCCUPANCY	OFFICES
DORMITORIES				
1930	Shepard (women)	28,742	156	2
1937	McLean (coed)	16,668	80	2
1937	Rush (coed-honors)	17,187	70	
1939	Old Senior (women)	8,529	18	24
1951	Chidley (men)	77,282	624	7
1951	Graduate Apts.	10,750	12	
1960	Latham (women)	28,453	201	1
1966	Baynes (women)	52,314	402	1
1968	Eagleson (women)	55,517	402	1
TOTAL DORMITORY FACILITIES		295,442	1965	38
OTHER RESIDENTIAL FACILITIES				
1960	707 Burlington Ave.	850		
1960	709 Burlington Ave.	850		
1963	523 Nelson Street	850		
1969	1908 Fayetteville St.	1,649		
1974	Chancellor's Residence	3,293		
TOTAL OTHER RESIDENTIAL FACILITIES		7,492		
GRAND TOTAL: ALL FACILITIES		1,013,076		

TABLE 2

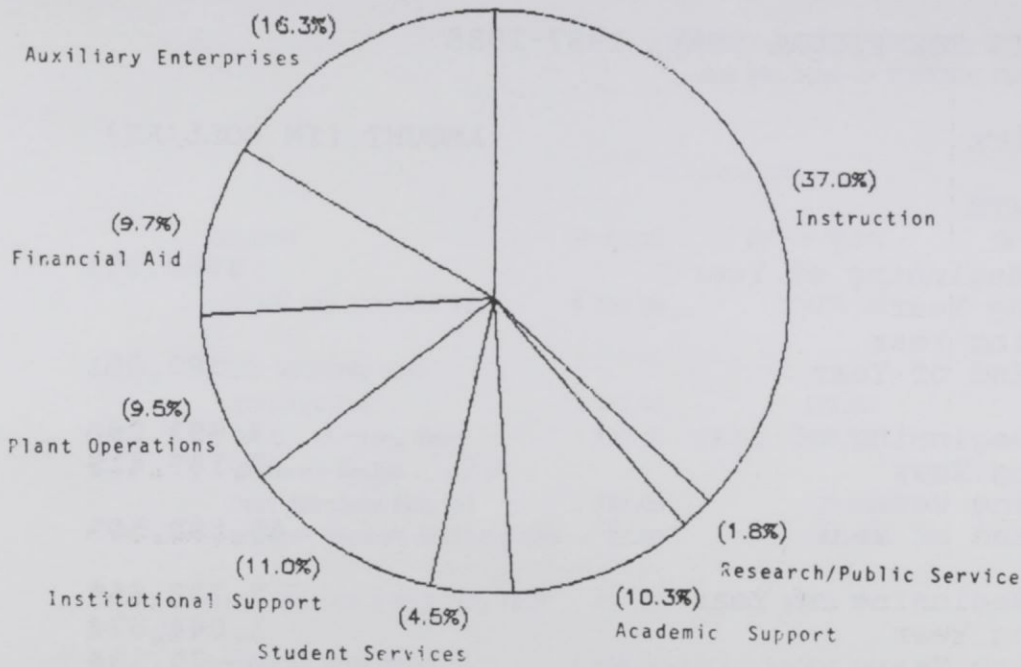
REVENUES AND EXPENDITURES FOR  
FISCAL YEAR, 1987-88

DESCRIPTION OF FINANCIAL STATISTICS	AMOUNT (IN DOLLARS)
CURRENT FUNDS REVENUES BY SOURCES	\$4,793,527
Tuition & Fees	25,004,284
State	
Government Grants & Contracts:	
Federal, Unrestricted	246,869
Federal, Restricted	5,534,605
State, Unrestricted	5,014
State, Restricted	157,285
Local, Unrestricted	
Local, Restricted	
Private Gifts, Grants & Contracts:	
Unrestricted	49,276
Restricted	229,788
Endowment Income:	
Unrestricted	7,239
Restricted	59,554
Sales & Services of Educational Activities	
Sales & Services of Auxiliary Enterprises	7,926,240
Other Sources	
Independent Operations	195,731
TOTAL CURRENT FUNDS REVENUES	\$44,209,412
CURRENT FUNDS EXPENDITURES & MANDATORY TRANSFER	
Instruction	\$15,937,615
Research	513,525
Public Service	268,583
Academic Support (Including Libraries)	4,426,082
Student Services	1,933,937
Institutional Administration	4,727,118
Physical Plant Operations	4,109,292
Student Financial Support	
Awards from Unrestricted Funds	625,385
Awards from Restricted Funds	3,552,020
Auxiliary Enterprises (Including Mandatory Transfers)	7,018,077
Independent Operations (Including Mandatory Transfers)	
TOTAL CURRENT FUNDS EXPENDITURES & MANDATORY TRANSFERS	\$43,111,634

SOURCE: IPEDS F-1 Current Funds Expenditures and Transfers for Fiscal Year 1988

FIGURE 1  
EXPENDITURES BY BUDGET AREA  
TEN-YEAR COMPARISON

Fiscal Year 1987-88



Fiscal Year 1977-78

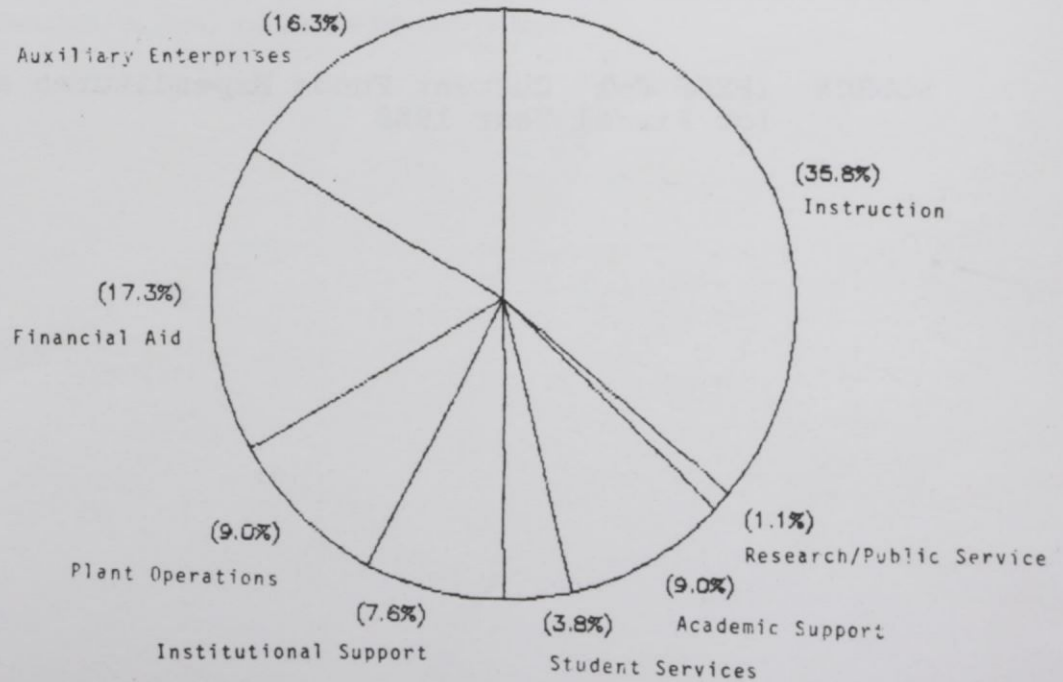


TABLE 3  
ASSETS FOR FISCAL YEAR, 1987-1988

DESCRIPTION OF ASSETS	AMOUNT (IN DOLLARS)
<b>PHYSICAL PLANT ASSETS</b>	
Land:	
Book Value at Beginning of Year	\$980,091
Additions During Year	
Deductions During Year	
Book Value at End of Year	980,091
Buildings:	
Book Value at Beginning of Year	38,993,090
Additions During Year	10,189,415
Deductions During Year	
Book Value at End of Year	49,182,505
<b>EQUIPMENT</b>	
Book Value at Beginning of Year	7,736,659
Additions During Year	1,044,574
Deductions During Year	29,134
Book Value at End of Year	8,752,099
 <b>TOTAL PHYSICAL PLANT ASSETS (BOOK VALUE)</b>	 <b>\$58,914,695</b>

SOURCE: IPEDS F-1 Current Funds Expenditures and Transfers  
for Fiscal Year 1988

TABLE 4

STUDENT TUITION, FEES AND CHARGES  
FOR THE 1988-89 ACADEMIC YEAR

CATEGORY	UNDERGRADUATE		GRADUATE	
	IN-STATE	OUT-OF-STATE	IN-STATE	OUT-OF-STATE
TUITION AND ACADEMIC FEES	\$ 432.00	\$ 4270.00	\$ 432.00	\$ 4,270.00
OTHER REQUIRED FEES			435.00	435.00
Athletic Fee	113.00	113.00		
Health Services Fee	120.00	120.00		
Cultural Series				
Debt Services Fee (s)	137.00	137.00		
General Student Activity Fee	92.00	92.00		
TOTAL TUITION & REQUIRED FEES	894.00	4,732.00	867.00	4,705.00
DORMITORY ROOM RENT	1,428.00	1,428.00	1,495.00	1,495.00
BOARD PLAN (7-DAY) (20 Meals per week)	1,146.00	1,146.00	1,146.00	1,146.00

SOURCE: NCHED A-3 Student Tuition, Fees, and Charges for 1988-89 Report

TABLE 5  
 LIBRARY STAFF, COLLECTIONS AND EXPENDITURES  
 FISCAL YEAR 1988

LIBRARY STAFF	
Librarians	25
All Other Paid Staff	25

EXPENDITURES

Operating Expenditures	
Salaries and Wages	1,117,314
Fringe Benefits	0
Collections	
Print Materials	152,108
Serial Subscriptions	509,865
Microforms	31,660
Machine Readable Materials	5,034
Computer Software	3,057
Audiovisual Materials	13,717
Other	17,571
Preservation	6,524
Equipment	18,203
All other Operating Expenditures	116,720
Total Operating Expenditures	1,988,716

COLLECTIONS

Book Serials and Government Documents	
Number of Volumes	602,458
Number of Titles	426,663
Number of Government Document Titles	105,506
Current Serial Subscriptions	
Number of Titles	3,880
Microforms	
Number of Book Titles	5,017
Number of Serial Titles	287
Number of Government Document Titles	56,627
Total Number of Physical Units of	
all Types of Microforms	471,818
Manuscripts and Archives (in Linear Feet)	80
Cartographic Materials (Number of Units)	2,318
Graphic Materials (Number of Titles)	19,691
Audio Materials (Number of Titles)	1,034
Films (Number of Titles)	254
Video Materials (Number of Titles)	139
Machine Readable Materials (Number of Titles)	222
Other Library Materials (Number of Titles)	23

SOURCE: IPEDSID Libraries Report, Fall 1988

## FACTS TO SUPPORT PLANNING

### LIST OF TABLES AND FIGURES

TABLE	6:	Degree Programs and Program Tracks	35
TABLE	7:	Credit Hours Generated By Department for Academic Years 1983-84 Through 1987-88	40
TABLE	8:	Grades Assigned By School (Distribution of Percentages)	42
TABLE	9:	Profile of College of Arts and Sciences	43
TABLE	10:	Profile of School of Business	44
TABLE	11:	Profile of School of Law	45
TABLE	12:	Profile of School of Library and Information Sciences	46
TABLE	13:	Students Enrolled, Graduated, Suspended, and Not Enrolled One Year After Initial Entry (Percentages)	47
TABLE	14:	Graduation Percentages for First-Time Freshmen, 1977-1984	48
TABLE	15:	First-Time Freshmen Enrolled or Graduated at NCCU and in the UNC System (Percentages)	49
TABLE	16:	Comparison of Faculty Salaries	50

TABLE 6

## DEGREE PROGRAMS AND PROGRAM TRACKS

March 30, 1987

North Carolina Central University is authorized to offer degree programs in 16 discipline divisions at the baccalaureate, master's and professional levels. The programs and program tracks under each of these divisions with program titles, degrees, and tracks are as follows:

API CODE	DIVISION AND PROGRAM TITLE	DEGREE LEVEL*	DEGREE	PROGRAM TRACK
<u>BIOLOGICAL SCIENCE</u>				
0401	Biology, General	B	B.S.	Biology
		B	B.S.	Biology, Secondary Education
		M	M.S.	Biology
		M	M.S.	Biology, Secondary Education
<u>BUSINESS AND MANAGEMENT</u>				
0502	Accounting	B	B.B.A.	Accounting
0506	Business Management and Administration	B	B.B.A.	Business Administration
		B	B.B.A.	Banking and Finance
		B	B.B.A.	Computer Information Systems
		B	B.B.A.	Management
		B	B.B.A.	Marketing
		M	M.B.A.	Business Administration
0517	Business Economics	B	B.B.A.	Economics
		B	B.A.	Economics
<u>COMPUTER &amp; INFORMATION SCIENCE</u>				
0701	Computer & Information Science	B	B.S.	Computer Science
<u>EDUCATION</u>				
0802	Elementary Education, General	B	B.A.	Elementary Education, Intermediate (4-6)
		B	B.A.	Early Childhood Education (K-4)
		M	M.A.	Elementary Education (Early Childhood and Intermediate)
		M	M.Ed.	Elementary Education (Early Childhood and Intermediate)

\*Level: B = Bachelor's      M = Master's      P = Professional



DEGREE PROGRAMS AND PROGRAM TRACKS (Continued)

API CODE	DIVISION AND PROGRAM TITLE	DEGREE LEVEL*	DEGREE	PROGRAM TRACK
<u>EDUCATION</u> (Continued)				
0804	Junior High School Education	M	M.A.	Middle Grades Education
		M	M.Ed.	Middle Grades Education
0808	Special Education, General	M	M.Ed.	Education of Mentally Retarded
		M	M.Ed.	Education of the Emotionally Disturbed
0815	Speech Correction	M	M.Ed.	Speech and Hearing Education
0826	Student Personnel	M	M.A.	Student Personnel (Counseling and Guidance)
		M	M.A.	Career Counseling and Placement
		M	M.A.	Agency Counseling
0835	Physical Education	B	B.S.	Physical Education
		M	M.S.	Physical Education
		M	M.S.	Special Physical Education
		M	M.S.	Physical Education, Secondary Education
0837	Health Education	B	B.S.	Health Education
		B	B.S.	Community Health Education
0838	Business, Commerce & Distributive Education	B	B.S.C.	Business Education, Secondary, Basic
		B	B.S.C.	Business Education, Secondary, Comprehensive
		M	M.S.	Business Education, Secondary
0893	Educational Administration & Supervision	M	M.A.	Educational Administration Supervision
0897	Educational Media	M	M.A.	Instructional Media
<u>FINE AND APPLIED ARTS</u>				
1002	Art	B	B.A.	Art, General
		B	B.A.	Visual Communications
		B	B.A.	Art, Fine Arts
		B	B.A.	Art, Art Education
1004	Music	B	B.M.	Jazz
		B	B.M.	Sacred Music

\*Level: B = Bachelor's      M = Master's      P = Professional

DEGREE PROGRAMS AND PROGRAM TRACKS (Continued)

API CODE	DIVISION AND PROGRAM TITLE	DEGREE LEVEL*	DEGREE	PROGRAM TRACK
1005	Music	B	B.A.	Music (Liberal Arts Program)
		B	B.A.	Music, Music Education
		M	M.A.	Music (Liberal Arts Program)
		M	M.A.	Music Education, K-12
1007	Dramatic Arts	B	B.A.	Dramatic Arts
		B	B.A.	Dramatic Arts, Secondary Education
		B	B.A.	Theatre Arts Education, K-12
<u>FOREIGN LANGUAGES</u>				
1102	French	B	B.A.	French
		B	B.A.	French, Secondary Education
		M	M.A.	French
		M	M.A.	French, Secondary Education
1105	Spanish	B	B.A.	Spanish
		B	B.A.	Spanish, Secondary Education
<u>HEALTH PROFESSIONS</u>				
1203	Nursing	B	B.S.N.	Nursing
<u>HOME ECONOMICS</u>				
1301	Home Economics, General	B	B.S.H.E.	Home Economics, General
		B	B.S.H.E.	Home Economics, Secondary Education
		M	M.S.	Home Economics Education
1303	Clothing and Textiles	B	B.S.H.E.	Clothing and Textiles
1306	Foods and Nutrition	B	B.S.H.E.	Foods and Nutrition (including Dietetics)
<u>LAW</u>				
1401	Law, General	P	L.L.B.	Law
		P	J.D.	Law

\*Level: B = Bachelor's      M = Master's      P = Professional

DEGREE PROGRAMS AND PROGRAM TRACKS (Continued)

API CODE	DIVISION AND PROGRAM TITLE	DEGREE LEVEL*	DEGREE	PROGRAM TRACK
<u>LETTERS</u>				
1501	English, General	B	B.A.	English
		B	B.A.	English, Secondary Education
		M	M.A.	English
1509	Philosophy	B	B.A.	Philosophy
<u>LIBRARY SCIENCE</u>				
1601	Library Science, General	M	M.L.S.	Library Science
<u>MATHEMATICS</u>				
1701	Mathematics, General	B	B.S.	Mathematics
		B	B.S.	Mathematics, Secondary Education
		B	B.S.	Actuarial Science
		M	M.S.	Mathematics
		M	M.S.	Mathematics, Secondary Education
<u>PHYSICAL SCIENCES</u>				
1902	Physics, General	B	B.S.	Physics
		B	B.S.	Physics, Secondary Education
1905	Chemistry, General	B	B.S.	Chemistry
		B	B.S.	Chemistry, Secondary Education
		M	M.S.	Chemistry
		M	M.S.	Chemistry, Secondary Education
<u>PSYCHOLOGY</u>				
2001	Psychology, General	B	B.A.	Psychology
		M	M.A.	Psychology
<u>PUBLIC AFFAIRS AND SERVICES</u>				
2102	Public Administration	M	M.P.A.	Public Administration
2103	Parks and Recreation Management	B	B.S.	Recreation Administration
		M	M.S.	Recreation Administration

\*Level: B = Bachelor's      M = Master's      P = Professional

DEGREE PROGRAMS AND PROGRAM TRACKS (Continued)

API CODE	DIVISION AND PROGRAM TITLE	DEGREE LEVEL*	DEGREE	PROGRAM TRACK
2105	Law Enforcement and Corrections	B	B.A.	Political Science: Criminal Justice
		M	M.S.	Criminal Justice
<u>SOCIAL SCIENCES</u>				
2201	Social sciences, General	B	B.A.	Social Sciences
2205	History	B	B.A.	History
		B	B.A.	History, Secondary Education
		M	M.A.	History
		M	M.A.	History, Secondary Education
2206	Geography	B	B.S.	Geography
2207	Political Science and Government	B	B.A.	Political Science
2208	Sociology	B	B.A.	Sociology
		M	M.A.	Sociology

\*Level: B = Bachelor's      M = Master's      P = Professional

Source:

Academic Program Inventory, The University of North Carolina, March 30, 1987.

TABLE 7

CREDIT HOURS GENERATED BY DEPARTMENT  
ACADEMIC YEARS 1983-84 THROUGH 1987-1988  
UNDERGRADUATE LEVEL

	YEAR									
	1983-84		1984-85		1985-86		1986-87		1987-88	
	HOURS		HOURS		HOURS		HOURS		HOURS	
	SUM	PERCENT	SUM	PERCENT	SUM	PERCENT	SUM	PERCENT	SUM	PERCENT
COLLEGE OF ARTS & SCIENCES										
Art	3023.0	2.9	2116.0	2.3	2246.0	2.4	2731.0	2.7	2618.0	2.7
Biology	8731.0	8.3	6650.0	7.1	5841.0	6.3	6263.0	6.2	5888.0	6.0
Chemistry	2721.0	2.6	2392.0	2.6	1872.0	2.0	2184.0	2.2	2146.0	2.2
Drama	1989.0	1.9	2181.0	2.3	2172.0	2.3	1999.0	2.0	1964.0	2.0
Education	3993.0	3.8	3180.0	3.4	3152.0	3.4	3393.0	3.4	3729.0	3.8
English	14481.0	13.7	11544.0	12.4	11130.0	12.0	12543.0	12.4	12657.0	13.0
Geography	2055.0	2.0	1892.0	2.0	2010.0	2.2	2162.0	2.1	2431.0	2.5
Health Education	4156.0	3.9	3293.0	3.5	3607.0	3.9	3548.0	3.5	3078.0	3.2
History & Social Sciences	4740.0	4.5	5187.0	5.6	6504.0	7.0	6816.0	6.8	7320.0	7.5
Home Economics	1937.0	1.8	2268.0	2.4	2163.0	2.3	2089.0	2.1	1950.0	2.0
Mathematics	9829.0	9.3	9282.0	10.0	9346.0	10.1	12274.0	12.1	11425.0	11.7
Modern Foreign Languages	4056.0	3.8	4284.0	4.6	4719.0	5.1	5250.0	5.2	4446.0	4.6
Music	3705.0	3.5	3617.5	3.9	3095.0	3.3	3159.0	3.1	3222.0	3.3
Nursing	2696.0	2.6	3058.0	3.3	2520.0	2.7	2284.0	2.3	2026.0	2.1
Orientation	1033.0	1.0	758.0	0.8	770.0	0.8	1072.0	1.1	839.0	0.9
Philosophy	1191.0	1.1	990.0	1.1	723.0	0.8	568.0	0.6	663.0	0.7
Physical Ed. & Recreation	4665.5	4.4	4154.0	4.5	3669.0	4.0	4246.0	4.2	3745.0	3.8
Physics	1059.0	1.0	922.0	1.0	885.0	1.0	1042.0	1.0	863.0	0.9
Political Science	8325.0	7.9	8262.0	8.9	9234.0	10.0	10364.0	10.3	10284.0	10.5
Psychology	2338.0	2.2	2451.0	2.6	2437.0	2.6	2734.0	2.7	2881.0	3.0
ROTC	165.5	0.2	287.0	0.3	319.5	0.3	418.0	0.4	262.0	0.3
Sociology	3985.0	3.8	3470.0	3.7	3866.0	4.2	4297.0	4.3	4134.0	4.2
SCHOOL OF BUSINESS										
Business	14494.0	13.8	10904.0	11.7	10199.0	11.0	9432.0	9.4	8963.0	9.2
TOTAL	105368.0	100	93142.5	100	92479.5	100	100868.0	100	97534.0	100

SOURCE: Fall 1987 and Spring 1988 Credit Hours Tapes, Student Information System

TABLE 7 (continued)

CREDIT HOURS GENERATED BY DEPARTMENT  
ACADEMIC YEARS 1983-84 THROUGH 1987-1988  
GRADUATE LEVEL

	1983-84		1984-85		1985-86		1986-87		1987-88	
	HOURS		HOURS		HOURS		HOURS		HOURS	
	SUM	PERCENT	SUM	PERCENT	SUM	PERCENT	SUM	PERCENT	SUM	PERCENT
PROFESSIONAL SCHOOLS										
Business	276.0	2.9	210.0	2.3	195.0	2.1	687.0	7.6	156.0	2.0
Law	8236.0	86.4	8102.0	88.0	7623.0	82.6	7011.0	78.0	6440.0	82.6
Library & Information Sciences	1017.0	10.7	894.0	9.7	1410.0	15.3	1292.0	14.4	1203.0	15.4
TOTAL	9529.0	100.0	9306.0	100.0	9228.0	100.0	8990.0	100.0	7799.0	100.0
COLLEGE OF ARTS & SCIENCES										
Biology	256.0	5.6	248.0	5.2	226.0	4.1	198.0	3.0	167.0	2.6
Chemistry	291.0	6.3	153.0	3.2	136.0	2.5	176.0	2.7	106.0	1.7
Education	2807.0	61.0	3012.0	63.6	3138.0	57.4	3344.0	51.2	3561.0	56.2
English	138.0	3.0	108.0	2.3	153.0	2.8	168.0	2.6	126.0	2.0
History & Social Sciences	96.0	2.1	126.0	2.7	120.0	2.2	234.0	3.6	123.0	1.9
Home Economics	219.0	4.8	174.0	3.7	132.0	2.4	165.0	2.5	144.0	2.3
Mathematics	153.0	3.3	69.0	1.5	165.0	3.0	159.0	2.4	168.0	2.7
Modern Foreign Languages	15.0	0.3	12.0	0.3	6.0	0.1	47.0	0.7	12.0	0.2
Music	71.5	1.6	45.0	0.9	21.0	0.4	42.0	0.6	9.0	0.1
Physical Education & Recreation	153.0	3.3	165.0	3.5	153.0	2.8	180.0	2.8	120.0	1.9
Political Science*			144.0	3.0	786.0	14.4	1115.0	17.1	1192.0	18.8
Psychology	240.0	5.2	282.0	6.0	276.0	5.1	471.0	7.2	366.0	5.8
Sociology	165.0	3.6	201.0	4.2	153.0	2.8	231.0	3.5	237.0	3.7
TOTAL	4604.5	100	4739.0	100	5465.0	100	6530.0	100	6331.0	100

\* There were no graduate courses in Political Science before the 1984-85 academic year.

Table 8

Grades Assigned by School  
(Distribution of Percentages)

FALL, 1987	A	B	C	D	F	n
Arts & Sciences	21.6	29.8	27.9	11.8	8.9	14676
Lower	18.4	27.4	30.1	13.7	10.4	10836
Upper	23.6	35.4	26.9	8.2	5.9	2943
Grad.	53.8	40.4	4.9	0.0	0.9	897
Business	11.1	25.0	36.3	14.5	13.1	1500
Lower	8.1	18.8	30.8	15.8	26.5	569
Upper	11.4	28.6	41.0	14.1	4.9	898
Grad.	54.5	36.4	6.1	0.0	3.0	33
Law	11.3	44.0	37.9	6.1	0.7	1199
Library Science	63.9	35.1	0.5	0.0	0.5	208
Upper	60.5	38.2	1.3	0.0	0.0	76
Grad.	65.9	33.3	0.0	0.0	0.8	132
SPRING, 1988	A	B	C	D	F	n
Arts & Sciences	21.2	28.8	29.3	12.1	8.6	14572
Lower	18.0	27.5	30.5	13.8	10.2	10370
Upper	21.4	30.2	32.6	10.3	5.5	3254
Grad.	55.3	39.3	4.1	0.1	1.2	948
Business	11.7	30.8	37.9	11.5	8.1	1441
Lower	10.5	24.5	34.2	16.6	14.2	506
Upper	11.3	34.0	41.0	8.9	4.8	911
Grad.	54.1	41.7	0.0	0.0	4.2	24
Law	17.7	40.0	37.1	5.0	0.2	1108
Library Science	68.0	29.9	2.1	0.0	0.0	147
Upper	68.5	25.9	5.6	0.0	0.0	54
Grad.	67.7	32.3	0.0	0.0	0.0	93

Source: Fall 1987 and Spring 1988 Credit Hours Tapes, Student Information System

TABLE 9

## PROFILE OF COLLEGE OF ARTS AND SCIENCES

## APPLICATIONS AND ENROLLMENT: NEW DEGREE-SEEKING STUDENTS

	NEW FRESHMEN			NEW TRANSFERS			NEW GRADUATE		
	1986	1987	1988	1986	1987	1988	1986	1987	1988
Applied	1,241	1,277	1842	324	324	358	347	201	186
Accepted	1,138	1,209	1285	306	310	348	346	188	182
Enrolled	704	856	685	208	212	199	219	144	157

## FALL ENROLLMENT FOR DEGREE SEEKING STUDENTS

	UNDERGRADUATE			GRADUATE			TOTAL		
	1986	1987	1988	1986	1987	1988	1986	1987	1988
Black	2,858	3,235	3,226	365	325	354	3,223	3,560	3580
White	271	264	247	111	105	130	382	269	377
Other	36	42	48	12	10	13	48	52	61
TOTAL	3,165	3,541	3,521	488	440	497	3,653	3,981	4,018

## DEGREES AWARDED

	UNDERGRADUATE			GRADUATE			TOTAL		
	85-86	86-87	87-88	85-86	86-87	87-88	85-86	86-87	87-88
Black	299	322	310	63	60	55	362	382	365
White	41	33	36	16	26	23	57	59	59
Other	18	4	6	5	5	2	23	9	8
TOTAL	358	359	352	84	91	80	442	450	432

## TOTAL CREDIT HOURS GENERATED

	UNDERGRADUATE			GRADUATE			TOTAL		
	85-86	86-87	87-88	85-86	86-87	87-88	85-86	86-87	87-88
Sum	82,281	91,436	88,571	5,465	6,530	6331	87,746	97,966	94902

## FACULTY/EPA--HEADCOUNT

	1986			1987			1988		
	FT	PT	TOTAL	FT	PT	TOTAL	FT	PT	TOTAL
Professor	40	0	40	38	2	40	40	3	43
Associate	64	0	64	60	1	61	53	3	56
Assistant	75	0	75	69	0	69	58	2	60
Instructor	7	6	13	15	2	17	15	2	17
Lecturer	7	38	45	7	4	11	4	2	6
Adjunct	7	1	8	19	61	80	17	95	112
TOTAL	200	45	245	208	70	278	187	107	294

## BUDGETED FTE

212.6

213.3

210.9

## FACULTY STATISTICS

	#	1986		#	1987		#	1988	
		TENURED	MEAN AGE SALARY		TENURED	MEAN AGE SALARY		TENURED	MEAN AGE SALARY
Professor	39	52	39,600	38	52	41,153	38	51	42,877
Associate	51	48	32,462	49	49	33,823	41	50	35,636
Assistant	32	45	27,335	30	46	28,879	30	47	30,227
Instructor	5	57	26,911	4	57	28,748	4	58	30,218
TOTAL	127	48	\$31,789	121	49	\$33,337	113	50	35,215

## INSTRUCTIONAL BUDGET: STATE APPROPRIATIONS

	1986-87	1987-88	1988-89
Supplies	66,251	66,251	78,721
Communications	9,865	14,865	16,365
Equipment	190,192	164,673	164,673
Travel	6,695	20,921	20,921
Instructional Personnel	6,809,548	7,176,068	7,453,610
TOTAL	\$7,082,551	\$7,432,367	7,734,290

NOTE: Equipment for 88-89 includes \$124,911 for scientific equipment.  
 Equipment for 87-88 includes \$124,911 for scientific equipment.  
 Equipment for 86-87 includes \$150,430 for scientific equipment.  
 Faculty in Academic Skills are not included for 1986-87.



TABLE 10

## PROFILE OF SCHOOL OF BUSINESS

## APPLICATIONS AND ENROLLMENT: NEW DEGREE SEEKING STUDENTS

	NEW FRESHMEN			NEW TRANSFERS			NEW GRADUATE		
	1986	1987	1988	1986	1987	1988	1986	1987	1988
Applied	306	293	170	57	35	23	22	21	25
Accepted	270	222	140	51	27	23	13	11	15
Enrolled	74	47	79	13	0	14	12	8	11

## FALL ENROLLMENT

	UNDERGRADUATE			GRADUATE			TOTAL		
	1986	1987	1988	1986	1987	1988	1986	1987	1988
Black	366	245	279	13	14	17	379	259	296
White	24	14	11	7	8	10	31	22	21
Other	5	0	0	3	2	2	8	2	2
TOTAL	395	259	290	23	24	29	418	283	319

## DEGREES AWARDED

	UNDERGRADUATE			GRADUATE			TOTAL		
	85-86	86-87	87-88	85-86	86-87	87-88	85-86	86-87	87-88
Black	70	86	81	3	1	3	73	87	84
White	2	2	5	3	3	1	5	5	6
Other	3	3	0	1	1	0	4	4	0
TOTAL	75	91	86	7	5	4	82	96	90

## TOTAL CREDIT HOURS GENERATED

	UNDERGRADUATE			GRADUATE			TOTAL		
	1985	1986	1987	1985	1986	1987	1985	1986	1987
Sum	10,199	9,432	8,963	195	687	156	10,394	10,119	9,124

## FACULTY/EPA--HEADCOUNT

	1986			1987			1988		
	FT	PT	TOTAL	FT	PT	TOTAL	FT	PT	TOTAL
Professor	2	0	2	2	0	2	4	0	4
Associate	10	0	10	11	0	11	10	0	10
Assistant	18	0	18	15	0	15	12	2	14
Instructor	1	0	1	2	0	2	3	0	3
Lecturer	0	4	4	0	1	1	0	1	1
Adjunct	0	0	0	0	6	6	0	5	5
TOTAL	31	4	35	30	7	37	29	8	37

## BUDGETED FTE

37.0

37.0

37.9

## FACULTY STATISTICS

	1986			1987			1988		
	# TENURED	MEAN AGE	MEAN SALARY	# TENURED	MEAN AGE	MEAN SALARY	# TENURED	MEAN AGE	MEAN SALARY
Professor	1	47	43,750	1	48	48,607	4	52	48,829
Associate	6	49	37,869	9	49	40,892	9	50	43,105
Assistant	4	43	36,360	5	46	37,739	2	45	39,120
Instructor	1	--	--	1	--	--	1	--	--
TOTAL	12	45	\$36,878	16	48	\$39,182	16	48	41,175

## INSTRUCTIONAL BUDGET: STATE APPROPRIATIONS

	1986-87	1987-88	1988-89
Supplies	11,060	11,060	15,060**
Communications	3,638	3,764	3,764
Equipment	30,000	30,000	30,000
Travel	10,529	20,329 *	20,329
Instruct. Personnel	1,351,838	1,435,907	1,526,504
TOTAL	\$1,407,065	\$1,501,060	\$1,595,657

\* A special allocation of \$10,000 is included.

\*\* Includes \$2,000 for printing and binding \$2,000 for office supplies.

TABLE 11

## PROFILE OF SCHOOL OF LAW

## APPLICATIONS

	1986	1987	1988
Applied	241	292	288
Accepted	170	128	171
Enrolled	93	98	92

## FALL ENROLLMENT

	1986	1987	1988
Black	127	105	94
White	146	147	151
Other	5	4	8
TOTAL	278	256	253

## DEGREES AWARDED

	1985-86	1986-87	1987-88
Black	43	46	30
White	42	38	40
Other	0	2	2
TOTAL	85	86	72

## TOTAL CREDIT HOURS GENERATED

	1985-1986	1986-1987	1987-1988
Sum	7,623	7,011	6,440

## FACULTY/EPA--HEADCOUNT

	1986			1987			1988		
	FT	PT	TOTAL	FT	PT	TOTAL	FT	PT	TOTAL
Professor	7	0	7	6	0	6	6	0	6
Associate	3	0	3	4	0	4	4	0	4
Assistant	3	0	3	3	0	3	3	0	3
Instructor	0	1	1	0	0	0	0	0	0
Lecturer	0	3	3	1	0	1	0	1	1
Adjunct	6	0	6	2	7	9	3	5	8
TOTAL	19	4	23	16	7	23	16	6	22

## BUDGETED FTE

18.5

18.5

18.5

## FACULTY STATISTICS

	1986			1987			1988		
	#	MEAN	MEAN	#	MEAN	MEAN	#	MEAN	MEAN
	TENURED	AGE	SALARY	TENURED	AGE	SALARY	TENURED	AGE	SALARY
Professor	7	47	59,709	6	47	63,090	6	45	62,419
Associate	0	39	47,967	0	37	50,868	0	37	55,037
Assistant	0	37	41,729	0	40	45,105	0	36	46,570
Instructor	0	--	--	0	50	39,149	0	--	--
TOTAL	7	43	\$52,850	6	42	\$ 55,179	6	41	56,490

## INSTRUCTIONAL BUDGET: STATE APPROPRIATIONS

	1986-1987	1987-1988	1988-1989
Supplies	4,175	4,175	4,175
Communications	2,284	2,363	4,363
Equipment	10,000	19,313	19,314
Travel	11,291	11,419	11,419
Instructional Personnel	970,877	1,019,488	1,065,366
TOTAL	\$998,627	\$1,056,758	1,104,637

NOTE: Travel includes \$10,000 supplement for 87-88 and \$9,800 for 86-87.  
 Equipment includes \$9,504 for library storage equipment for 87-88.  
 One full professor is on leave in 1987-1988.

TABLE 12

## PROFILE OF SCHOOL OF LIBRARY AND INFORMATION SCIENCES

## APPLICATIONS

	1986	NEW GRADUATE 1987	1988
Applied	54	43	57
Accepted	54	41	57
Enrolled	26	32	53

## FALL ENROLLMENT

	1986	GRADUATE 1987	1988
Black	36	34	31
White	56	67	91
Other	6	9	12
TOTAL	98	110	134

## DEGREES AWARDED

	1985-86	GRADUATE 1986-87	1987-88
Black	5	10	12
White	10	16	19
Other	2	0	5
TOTAL	17	26	36

## TOTAL CREDIT HOURS GENERATED

	1985-86	GRADUATE 1986-87	1987-88
Sum	1,410	1,292	1,203

## FACULTY\EPA--HEADCOUNT

	1986			1987			1988		
	FT	PT	TOTAL	FT	PT	TOTAL	FT	PT	TOTAL
Professor	2	0	2	2	0	2	2	0	2
Associate	1	0	1	2	0	2	2	0	2
Assistant	3	0	3	1	0	1	1	0	1
Instructor	0	0	0	1	0	1	1	0	1
Lecturer	0	4	4	0	0	0	0	0	0
Adjunct	1	0	1	2	3	5	1	5	6
TOTAL	7	4	11	8	3	11	7	5	12

## BUDGETED FTE

8.5

8.5

8.8

## FACULTY STATISTICS

	1986			1987			1988		
	#	MEAN	MEAN	#	MEAN	MEAN	#	MEAN	MEAN
	TENURED	AGE	SALARY	TENURED	AGE	SALARY	TENURED	AGE	SALARY
Professor	2	49	\$36,907	2	50	\$39,149	2	51	41,622
Associate	1	--	--	2	50	32,374	2	51	34,547
Assistant	1	48	29,516	0	--	--	0	--	--
Instructor	0	--	--	0	--	--	0	--	--
TOTAL	4	49	32,446	4	46	34,740	4	47	36,789

## INSTRUCTIONAL BUDGET: STATE APPROPRIATIONS

	1986-87	1987-88	1988-89
Supplies	3,082	3,082	3,082
Communications	1,225	1,267	1,267
Equipment	5,000	5,000	5,000
Travel	1,000	1,200	1,200
Instructional Personnel	288,417	302,417	316,758
TOTAL	\$298,724	\$312,966	\$337,856

TABLE 13

STUDENTS ENROLLED, GRADUATED, SUSPENDED, AND NOT ENROLLED  
ONE YEAR AFTER INITIAL ENTRY  
(PERCENTAGES)

CLASS	1981	1982	1983	1984	1985	1986	1987
FRESHMEN	N=930	N=918	N=990	N=765	N=669	N=778	N=903
Enrolled	66%	77%	62%	72%	71%	71%	74%
Graduated	0	0	0	0	0	0	0
Suspended	6	3	6	2	4	3	3
Not Enrolled	27	19	32	26	25	26	23
LOWER LEVEL TRANSFERS	N=102	N=146	N=151	N=150	N=139	N=156	N=164
Enrolled	68%	70%	64%	65%	67%	66%	70%
Graduated	1	0	0	0	0	0	0
Suspended	2	3	3	1	1	1	1
Not Enrolled	29	27	33	34	32	33	29
UPPER LEVEL TRANSFERS	N=53	N=42	N=80	N=52	N=74	N=65	N=48
Enrolled	64%	79%	56%	79%	65%	60%	65%
Graduated	3	0	1	2	0	0	0
Suspended	0	0	1	0	0	0	2
Not Enrolled	32	21	41	19	35	40	33
FIRST PROFESSIONAL	N=109	N=128	N=133	N=107	N=99	N=93	N=98
Enrolled	78%	82%	71%	74%	80%	72%	86%
Graduated	0	0	2	2	0	0	0
Not Enrolled	22	18	27	24	20	28	14
MASTERS	N=277	N=157	N=208	N=193	N=193	N=257	N=184
Enrolled	46%	43%	45%	54%	53%	58%	62%
Graduated	5	6	6	7	5	6	4
Not Enrolled	49	51	50	39	42	36	34

SOURCE: NCHED A-7 Student Retention Data Survey

TABLE 14

GRADUATION PERCENTAGES FOR FIRST-TIME FRESHMEN  
1977 - 1984

COHORT	MEAN SAT	AFTER 4 YEARS	AFTER 5 YEARS	AFTER 6 YEARS	AFTER 7 YEARS
1977	700	31%	41%	44%	46%
1978	707	26%	36%	40%	42%
1979	678	19%	32%	39%	40%
1980	624	15%	29%	34%	36%
1981	625	14%	23%	28%	30%
1982	625	12%	23%	27%	
1983	636	11%	25%		
1984	688	11%			

SOURCE: NCHED A-7 Student Retention Data Survey

TABLE 15

FIRST-TIME FRESHMEN ENROLLED OR GRADUATED  
AT NORTH CAROLINA CENTRAL UNIVERSITY AND IN THE UNC SYSTEM  
(percentages)

	YEAR OF INITIAL ENTRY						
	1981	1982	1983	1984	1985	1986	1987
AFTER ONE YEAR							
NCCU	66%	77%	62%	72%	72%	71%	74%
UNC SYSTEM	76%	78%	76%	78%	78%	78%	81%
AFTER TWO YEARS							
NCCU	56%	48%	54%	56%	58%	59%	
UNC SYSTEM	63%	63%	64%	66%	66%	67%	
AFTER THREE YEARS							
NCCU	42%	44%	48%	48%	50%		
UNC SYSTEM	57%	58%	59%	60%	61%		
AFTER FOUR YEARS							
NCCU	35%	38%	41%	40%			
UNC SYSTEM	53%	54%	54%	56%			
AFTER FIVE YEARS							
NCCU	32%	33%	37%				
UNC SYSTEM	52%	52%	54%				
AFTER SIX YEARS							
NCCU	32%	31%					
UNC SYSTEM	52%	53%					
AFTER SEVEN YEARS							
NCCU	32%						
UNC SYSTEM	52%						

SOURCE: NCHED A-7 Student Retention Data Survey

TABLE 16

COMPARISON OF FACULTY SALARIES BY RANK  
 FOR NCCU AND COMPARABLE PUBLIC UNIVERSITIES, 1988-1989

RANK	NCCU	COMPARABLE UNIVERSITIES*
Professor	\$46,626	\$43,393
Associate Professor	37,578	37,444
Assistant Professor	32,662	32,080
Instructor	26,107	26,877

\* SOURCE: Southern Regional Education Board for Comparable  
 Master's I Level Institutions in the UNC System  
 (5 UNC Institutions in Master's I)

## FACTS ABOUT STUDENTS

### LIST OF TABLES AND FIGURES

TABLE	17:	Number of Student Applications, Acceptances and Enrollees, Fall 1988	53
FIGURE	2:	Ten-Year Comparison of Undergraduate Applicants, Acceptances and Enrollees	54
FIGURE	3:	Ten-Year Comparison of Graduate and First Professional Applicants, Acceptances and Enrollees	55
FIGURE	4:	Comparison of Freshmen Applicants, Acceptances, and Enrollees, 1980-88	56
TABLE	18:	Undergraduate Transfers Into NCCU, 1987-88	57
TABLE	19:	Distribution of First-Time Freshmen by State, Fall 1988	58
FIGURE	5:	Geographic Origin by State, First-Time Freshmen, Fall Semester 1988	59
TABLE	20:	Distribution of North Carolina First-Time Freshmen by County, Fall 1988	60
FIGURE	6:	Geographic Origin by County, First-Time Freshmen, Fall Semester 1988	61
TABLE	21:	Distribution of SAT Scores of Entering Freshmen	62
FIGURE	7:	Average Freshmen SAT Scores, 1978-88	63
TABLE	22:	High School Class Rank of Entering Freshmen, 1984-1988	64
TABLE	23:	Average Age of First-Time Freshmen, 1981-1988	64
TABLE	24:	General Characteristics of Enrollment, 1986-1988	65
TABLE	25:	Summary of General Characteristics, Fall 1988	66
TABLE	26:	Sex Distribution of Headcount Enrollment, 1926-1988	67
TABLE	27:	Racial Composition of Headcount Enrollment, 1979-1988	68
TABLE	28:	Geographic Origin of Students, 1980-1988	69
TABLE	29:	Distribution of Students by State, Fall 1988	70
FIGURE	8:	Geographic Origin by State, Undergraduate and Graduate Students, Fall 1988	71
TABLE	30:	Distribution of North Carolina Students by County, Fall 1988	72
FIGURE	9:	Geographic Origin by County, Undergraduate and Graduate Students, Fall 1988	73
TABLE	31:	Mean Age of Enrolled Students, 1976-1988	74
TABLE	32:	Undergraduate Enrollment by Age, 1988	75
TABLE	33:	Graduate Enrollment by Age, 1988	75
TABLE	34:	Undergraduate Degrees Conferred by Field of Study, 1982-1988	76
TABLE	35:	Graduate Degrees Conferred by Field of Study, 1982-1988	77
TABLE	36:	Characteristics of Graduated Students, 1988	78
TABLE	37:	Student Financial Aid, 1987-1988	79
TABLE	38:	Financial Aid Awards, 1984-1988	80



TABLE 17  
NUMBER OF STUDENT APPLICATIONS,  
ACCEPTANCES AND ENROLLEES, FALL 1988

	IN-STATE				OUT-OF-STATE				TOTAL
	MEN	%	WOMEN	%	MEN	%	WOMEN	%	
NEW STUDENTS									
FIRST-TIME FRESHMEN									
Applicants	464		764		320		465		2013
Accepted	386	83%	633	83%	153	48%	253	54%	1425
Enrolled	239	62%	374	59%	59	39%	92	36%	764
NEW UNDERGRADUATE TRANSFERS									
Applicants	136		164		29		52		381
Accepted	134	99%	163	99%	27	93%	47	90%	371
Enrolled	93	69%	91	56%	13	48%	16	34%	213
GRADUATE STUDENTS									
Applicants	81		158		11		18		268
Accepted	76	94%	154	97%	7	64%	17	94%	254
Enrolled	68	89%	139	90%	5	71%	9	53%	221
FIRST PROFESSIONAL STUDENTS									
Applicants	105		80		53		48		286
Accepted	73	70%	66	83%	11	21%	19	40%	169
Enrolled	49	67%	36	55%	1	9%	5	26%	91

SOURCE: OCR 14KB1-Applications, Acceptances and Actual Enrollment, Fall 1988

FIGURE 2.  
 TEN-YEAR COMPARISON OF UNDERGRADUATE  
 APPLICANTS, ACCEPTANCES & ENROLLEES

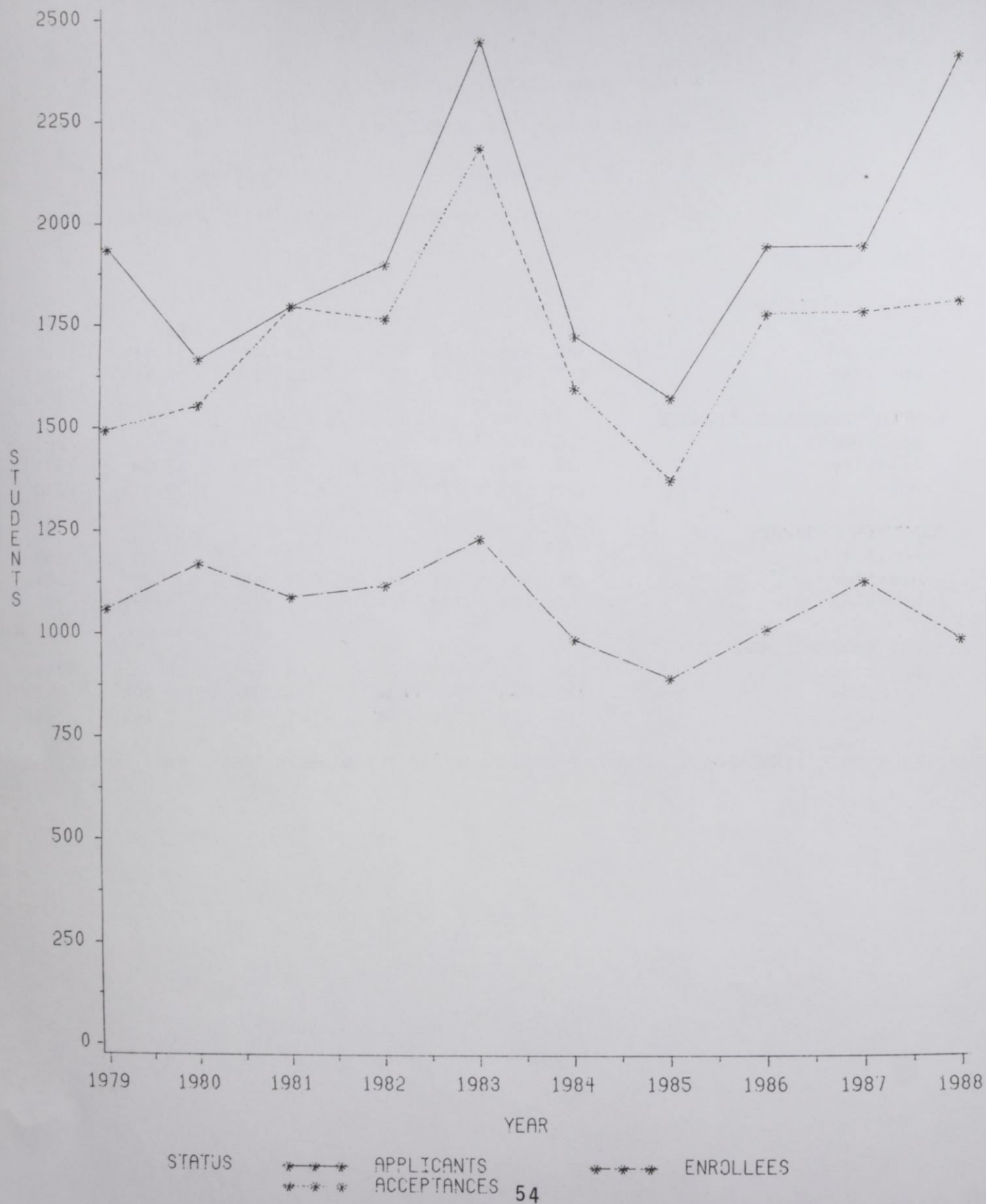
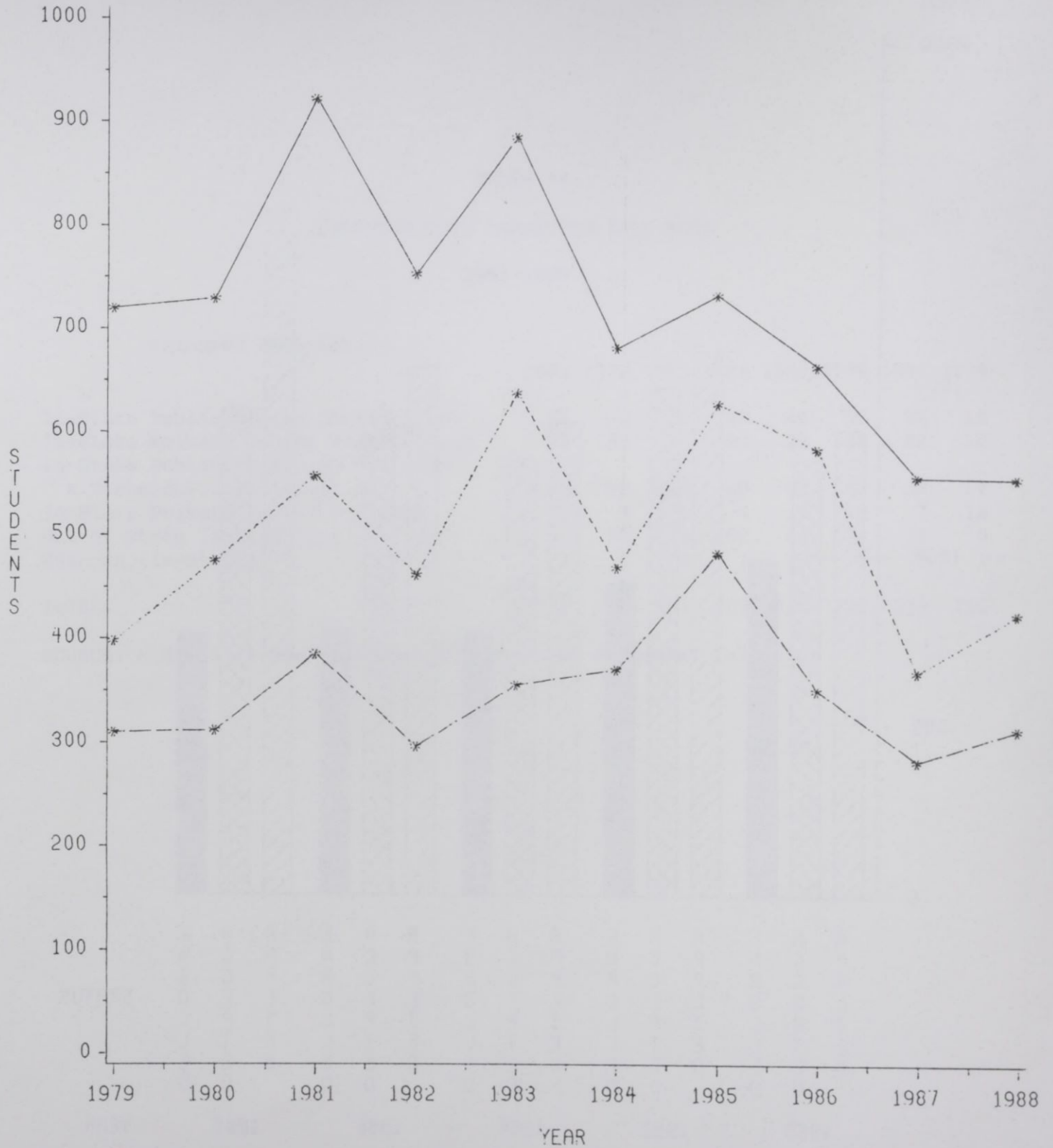
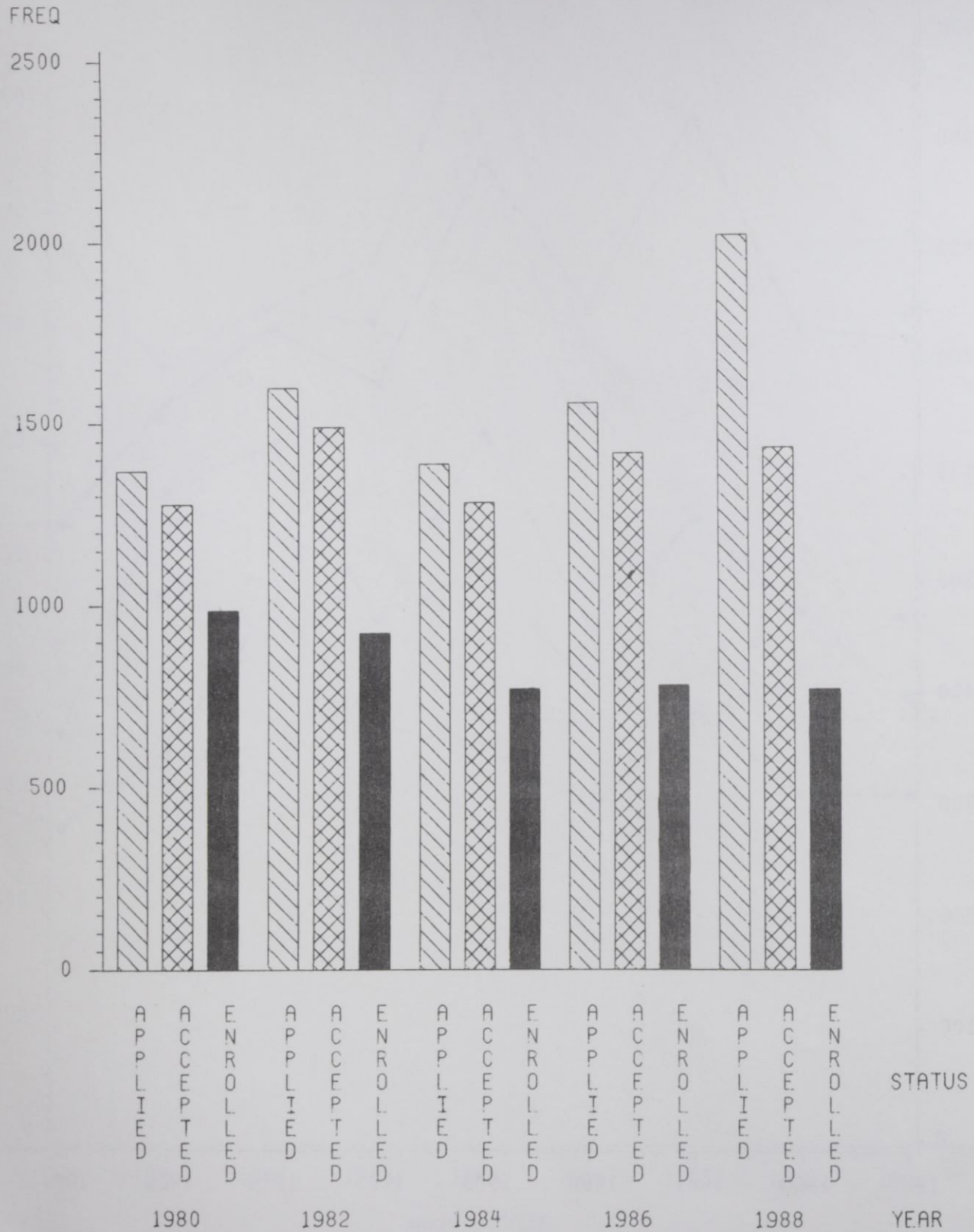


FIGURE 3  
**TEN-YEAR COMPARISON OF  
 GRADUATE AND FIRST PROFESSIONAL  
 APPLICANTS, ACCEPTANCES & ENROLLEES**

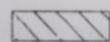


STATUS      \*-\*-\*      APPLICANTS      \*-\*-\*      ENROLLEES  
                  \*-\*-\*      ACCEPTANCES

FIGURE 4  
 COMPARISON OF FRESHMEN  
 APPLICANTS, ACCEPTANCES AND ENROLLEES  
 1980-1988



LEGEND: STATUS



APPLIED



ACCEPTED



ENROLLED

TABLE 18  
 UNDERGRADUATE TRANSFERS INTO NCCU  
 1981-1988

TRANSFER INSTITUTION	1981	1982	1983	1984	1985	1986	1987	1988
In-State Public Senior Institutions	26	40	76	48	46	50	51	46
In-State Private Senior Institutions	22	34	38	24	26	28	28	20
In-State Public Community Colleges & Technical Institutes	59	60	105	60	63	62	53	57
In-State Private Junior Colleges	6	3	6	4	7	7	7	12
Out-of-State Institutions	41	50	73	62	66	74	71	0
Unknown (In-State)		2	3	7	12	0	9	1
TOTALS	154	189	301	205	220	221	219	136

SOURCE: NCHED A1.2-New Undergraduate Transfer Students, Fall 1988

TABLE 19  
 DISTRIBUTION OF FIRST-TIME FRESHMEN BY STATE  
 Fall, 1988

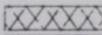
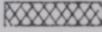
STATE	NUMBER	STATE	NUMBER
Alabama	0	Nebraska	0
Alaska	0	Nevada	0
Arizona	0	New Hampshire	0
Arkansas	0	New Jersey	21
California	1	New Mexico	0
Colorado	0	New York	30
Connecticut	2	North Carolina	613
Delaware	4	North Dakota	0
District of Columbia	12	Ohio	5
Florida	4	Oklahoma	0
Georgia	4	Oregon	0
Hawaii	0	Pennsylvania	9
Idaho	0	Rhode Island	0
Illinois	2	South Carolina	4
Indiana	0	South Dakota	0
Iowa	0	Tennessee	4
Kansas	0	Texas	1
Kentucky	0	Utah	0
Louisiana	0	Vermont	0
Maine	0	Virginia	17
Maryland	23	Washington	1
Massachusetts	2	West Virginia	0
Michigan	3	Wisconsin	1
Minnesota	0	Wyoming	0
Mississippi	0	U.S. Territories	0
Missouri	0	Foreign Countries	1
Montana	0	Unknown	0
		TOTAL	764

FIGURE 5  
GEOGRAPHIC ORIGIN BY STATE

FIRST-TIME FRESHMEN  
FALL SEMESTER, 1988



FREQUENCY

 1 TO 5  
 6 TO 20



 21 TO 60  
 GREATER THAN 60

TABLE 20

DISTRIBUTION OF NORTH CAROLINA FIRST-TIME FRESHMEN BY COUNTY  
FALL, 1988

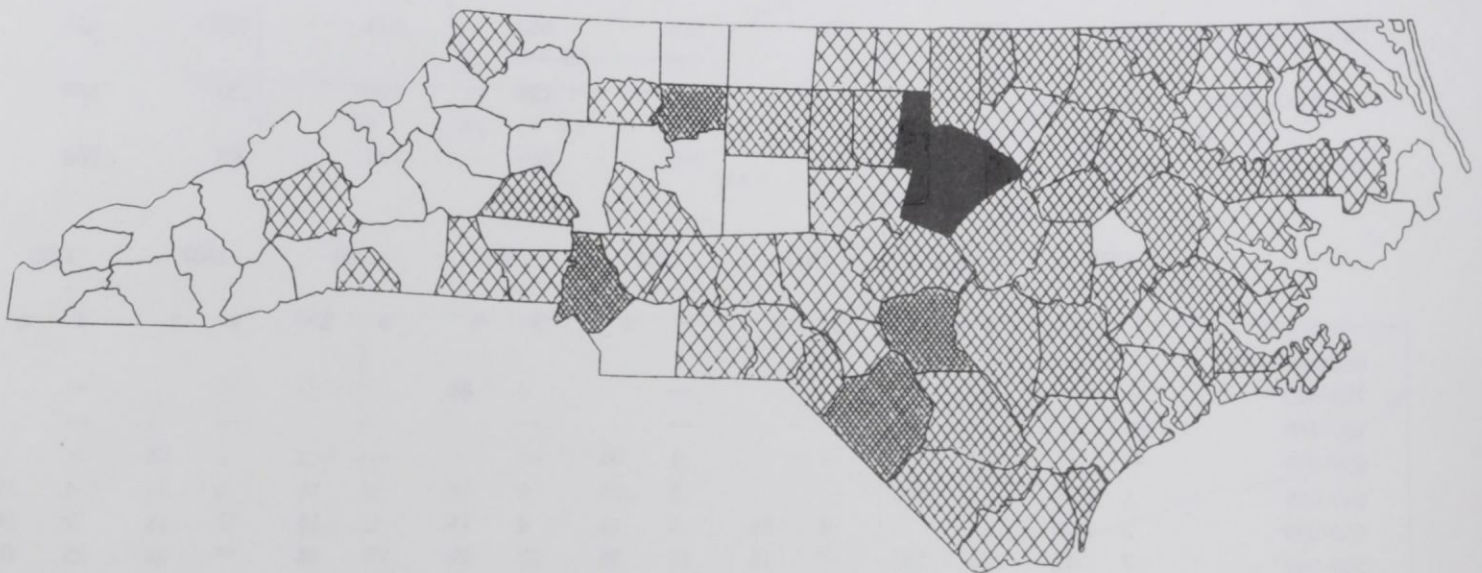
COUNTY NUMBER	COUNTY NUMBER	COUNTY	NUMBER	COUNTY NUMBER	COUNTY	NUMBER	
Alamance	10	Cumberland	46	Johnston	6	Randolph	1
Alexander	0	Currituck	0	Jones	1	Richmond	4
Alleghany	0	Dare	0	Lee	2	Robeson	22
Anson	5	Davidson	0	Lenoir	10	Rockingham	0
Ashe	1	Davie	0	Lincoln	0	Rowan	4
Avery	0	Duplin	7	McDowell	0	Rutherford	0
Beaufort	1	Durham	92	Macon	0	Sampson	6
Bertie	4	Edgcombe	18	Madison	0	Scotland	7
Bladen	15	Forsyth	27	Martin	8	Stanley	5
Brunswick	3	Franklin	3	Mecklenburg	41	Stokes	0
Buncombe	1	Gaston	2	Mitchell	0	Surry	0
Burke	0	Gates	1	Montgomery	3	Swain	0
Cabarrus	4	Graham	0	Moore	3	Transylvania	0
Caldwell	0	Granville	7	Nash	9	Tyrell	1
Camden	0	Greene	0	New Hanover	8	Union	0
Carteret	2	Guilford	20	Northampton	8	Vance	8
Caswell	3	Halifax	8	Onslow	4	Wake	54
Catawba	6	Harnett	7	Orange	11	Warren	9
Chatham	5	Haywood	0	Pamlico	1	Washington	6
Cherokee	0	Henderson	0	Pasquotank	1	Watauga	0
Chowan	0	Hertford	3	Pender	3	Wayne	16
Clay	0	Hoke	1	Perquimans	1	Wilkes	0
Cleveland	4	Hyde	0	Person	3	Wilson	12
Columbus	6	Iredell	0	Pitt	14	Yadkin	1
Craven	7	Jackson	0	Polk	1	Yancey	0
TOTAL						613	

SOURCE: OCR 14K B1-Supplement County Origin of Within State Students  
Fall 1988

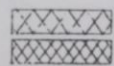


FIGURE 6  
GEOGRAPHIC ORIGIN BY COUNTY

FIRST-TIME FRESHMEN  
FALL SEMESTER, 1988



FREQUENCY



1 TO 5

6 TO 20

61



21 TO 50

GREATER THAN 50

TABLE 21

## DISTRIBUTION OF SAT SCORES OF ENTERING FRESHMEN

1980-1988

Score Intervals	1978		1980		1982		1984		1985		1986		1887		1988	
	N	%	N	%	N	%	N	%	N	%	N	%	N	%	N	%
Verbal																
750-800	--		--		--		--		--		1	0%	--		--	
700-749	--		--		--		--		--		--		--		--	
650-699	1	0%	--		--		--		--		--		2	0%	1	0%
600-649	2	0%	--		1	0%	1	0%	3	1%	4	1%	1	0%	--	
550-599	3	1%	3	0%	4	0%	4	1%	6	1%	7	1%	4	1%	2	0%
500-549	12	2%	7	1%	8	1%	7	1%	4	1%	11	2%	25	3%	14	2%
450-499	14	3%	23	2%	21	3%	17	3%	31	6%	32	5%	46	6%	37	6%
400-449	48	9%	40	4%	49	6%	46	9%	52	10%	73	12%	83	11%	90	14%
350-399	123	23%	120	13%	100	12%	111	22%	108	20%	108	17%	195	25%	170	27%
300-349	193	36%	228	25%	190	23%	160	31%	160	30%	177	29%	227	29%	178	29%
250-299	117	22%	288	31%	247	30%	125	24%	137	25%	160	26%	157	20%	102	16%
200-249	20	4%	219	24%	212	25%	44	9%	39	7%	46	7%	30	4%	30	5%
Total Reporting	533		928		832		515		540		619		770		624	
Not Available	301		58		86		250		129		159		133		140	
Total Students	834		986		918		765		669		778		903		764	
	1978		1980		1982		1984		1985		1986		1887		1988	
	N	%	N	%	N	%	N	%	N	%	N	%	N	%	N	%
Mathematical																
750-800	--		--		--		--		2	0%	--		--		--	
700-749	--		--		--		--		--		--		--		--	
650-699	--		--		--		1	0%	--		--		1	0%	--	
600-649	1	0%	1	0%	--		2	0%	6	1%	5	1%	5	1%	4	1%
550-599	2	0%	--		4	0%	5	1%	4	1%	8	1%	11	1%	7	1%
500-549	7	1%	14	2%	7	1%	13	3%	22	4%	23	4%	17	2%	25	4%
450-499	26	5%	31	3%	35	4%	35	7%	32	6%	50	8%	77	10%	67	11%
400-449	58	11%	69	7%	70	8%	72	14%	63	12%	89	14%	126	16%	127	20%
350-399	184	35%	209	23%	151	18%	140	27%	139	26%	175	28%	193	25%	188	30%
300-349	185	35%	327	35%	281	34%	166	32%	185	34%	192	31%	232	30%	168	27%
250-299	68	13%	228	25%	242	29%	73	14%	81	15%	71	11%	105	14%	38	6%
200-249	2	0%	49	5%	42	5%	8	2%	6	1%	6	1%	3	0%	--	0%
Total Reporting	533		928		832		515		540		619		770		624	
Not Available	301		58		86		250		129		159		133		140	
Total Students	834		986		918		765		669		778		903		764	

SOURCE: NCHEA A-4

FIGURE 7  
 AVERAGE FRESHMAN SAT SCORES  
 1978-88

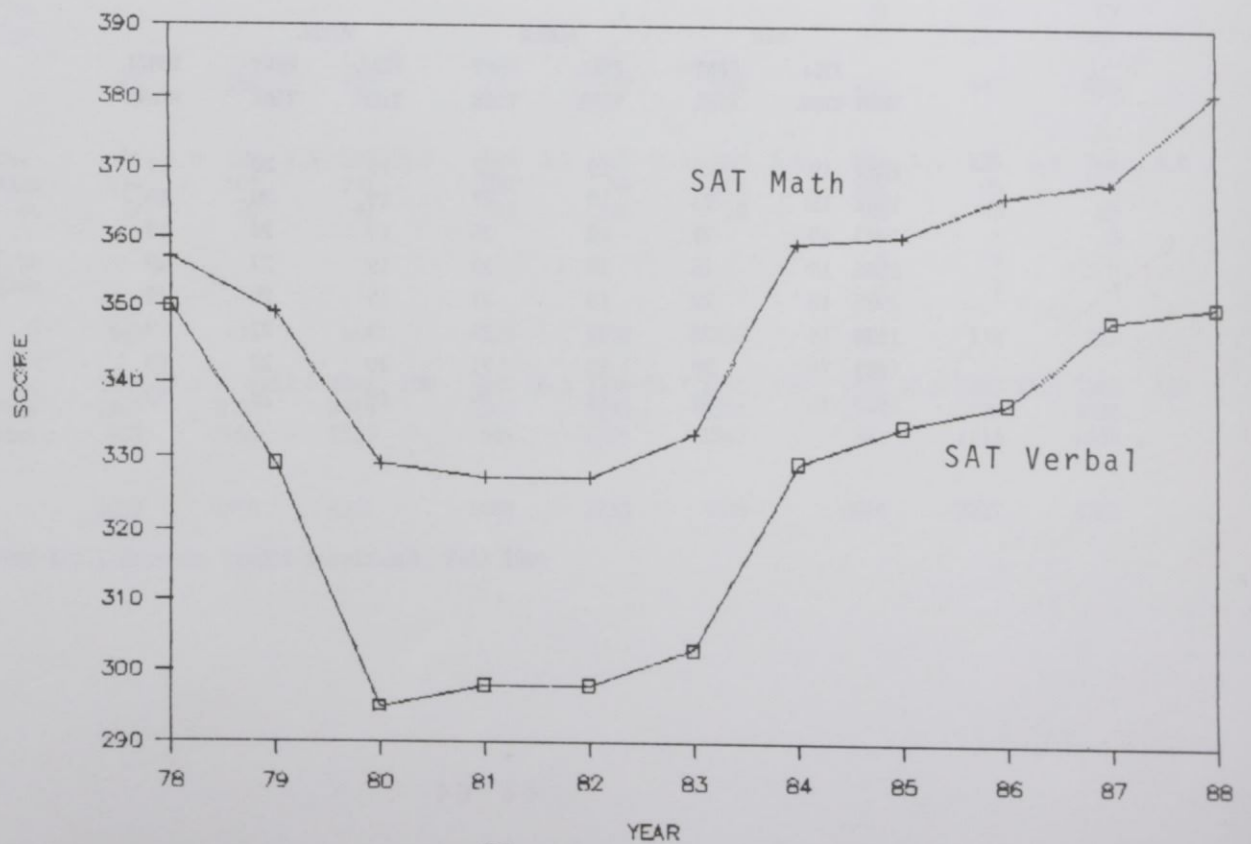
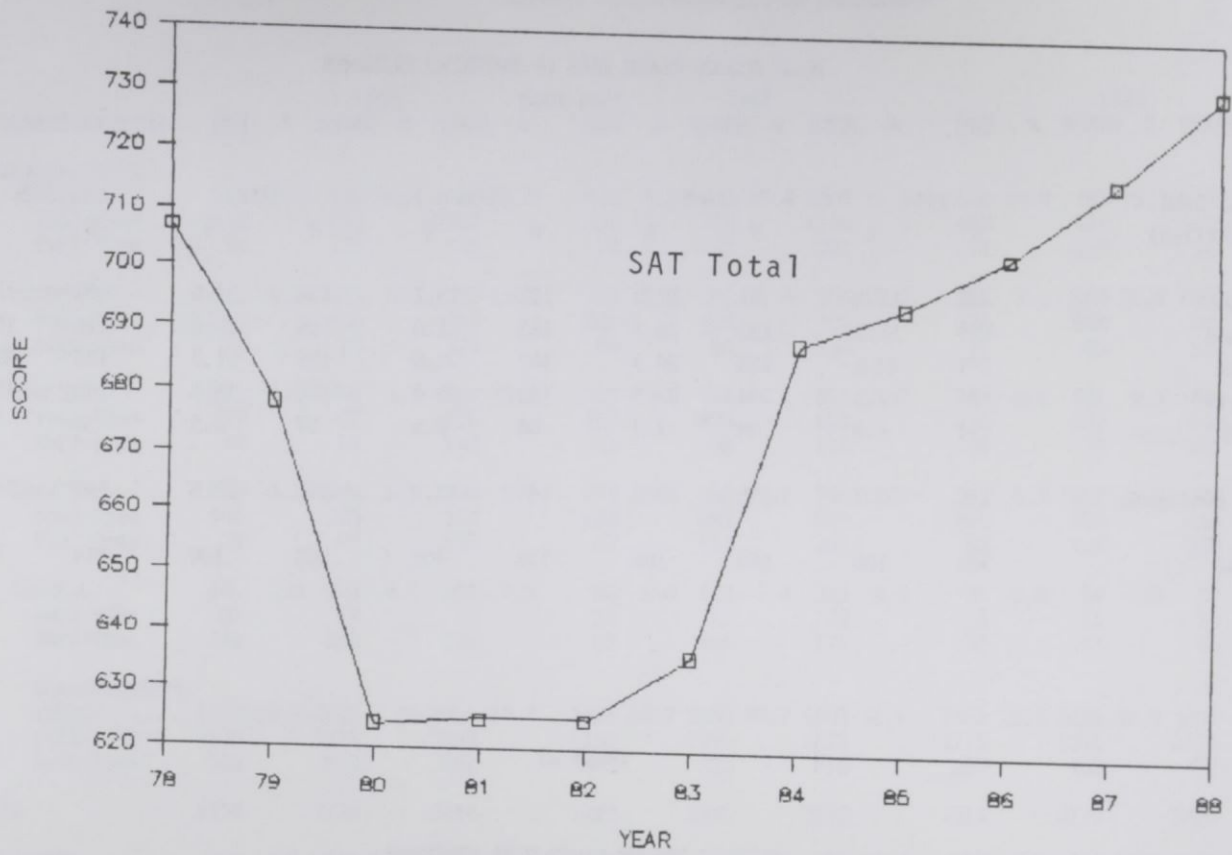


TABLE 22

HIGH SCHOOL CLASS RANK OF ENTERING FRESHMEN  
1984-1988

CLASS RANK (Quintiles)	1984		1985		1986		1987		1988	
	N	%	N	%	N	%	N	%	N	%
Highest	90	11.8	87	13.0	122	15.7	126	14.0	96	12.6
Second	139	18.2	136	20.3	163	21.0	189	20.9	146	19.1
Third	173	22.6	139	20.8	167	21.5	196	21.7	172	22.5
Fourth	94	12.3	104	15.5	122	15.6	150	16.6	145	19.0
Fifth	34	4.4	48	7.2	58	7.5	57	6.3	58	7.6
Not Available	235	30.7	155	23.2	146	18.8	185	20.5	147	19.2
TOTAL	765	100	669	100	778	100	903	100	764	100

TABLE 23

AVERAGE AGE OF FIRST-TIME FRESHMEN  
1981-1988

YEAR	MEN		WOMEN		TOTAL		TOTAL MEANS
	FULL- TIME	PART- TIME	FULL- TIME	PART- TIME	FULL- TIME	PART- TIME	
1981	19	23	19	27	19	26	19
1982	19	23	19	27	19	26	19
1983	19	21	19	25	19	24	19
1984	19	25	19	29	19	27	20
1985	19	22	19	27	19	25	19
1986	19	23	19	29	19	27	19
1987	19	20	19	21	19	20	19
1988	19	21	18	25	19	23	19

TABLE 24

## GENERAL CHARACTERISTICS OF ENROLLMENT

CHARACTERISTICS	1986						1987						1988					
	MEN	%	WOMEN	%	TOTAL	%	MEN	%	WOMEN	%	TOTAL	%	MEN	%	WOMEN	%	TOTAL	%
UNDERGRADUATE																		
FRESHMEN	592	11.9	968	19.4	1560	31.3	476	9.3	833	16.4	1309	25.7	560	10.8	787	15.2	1347	26.0
Full-Time	534		833		1367		398		710		1108		469		637		1106	
Part-Time	58		135		193		78		123		201		91		150		241	
SOPHOMORE	315	6.3	475	9.5	790	15.8	358	7.0	592	11.6	950	18.7	366	7.1	654	12.6	1020	19.7
Full-Time	282		400		682		308		498		806		323		568		891	
Part-Time	33		75		108		50		94		144		43		86		129	
JUNIOR	272	5.5	485	9.7	757	15.2	280	5.5	521	10.2	801	15.7	263	5.1	481	9.3	744	14.4
Full-Time	228		397		625		217		423		640		219		406		625	
Part-Time	44		88		132		63		98		161		44		75		119	
SENIOR	159	3.2	294	5.9	453	9.1	279	5.5	461	9.1	740	14.5	243	4.7	457	8.8	700	13.5
Full-Time	103		225		328		192		347		539		161		329		490	
Part-Time	56		69		125		87		114		201		82		128		210	
SPECIAL	141	2.8	223	4.5	364	7.3	80	1.6	123	2.4	203	4.0	33	0.6	54	1.0	87	1.7
Full-Time	23		17		40		15		17		32		3		11		14	
Part-Time	118		206		324		65		106		171		30		43		73	
UNDERGRADUATE																		
TOTAL	1479	29.7	2445	49	3924	78.7	1473	28.9	2530	49.7	4003	78.6	1465	28.3	2433	47.0	3898	75.2
Full-Time	1170		1872		3042		1130		1995		3125		1175		1951		3126	
Part-Time	309		573		882		343		535		878		290		482		772	
FTE	1324		2120		3444		1302		2246		3548		1314		2172		3486	
GRADUATE																		
Full-Time	226	4.5	560	11.2	786	15.8	237	4.7	592	11.6	829	16.3	304	5.9	724	14.0	1028	19.8
Part-Time	73		103		176		72		106		178		54		79		133	
Special	153		457		610		165		486		651		154		373		527	
Full-Time													96		272		368	
Part-Time													22		45		67	
FTE	165		358		523		171		377		548		209		447		656	
FIRST-PROFESSIONAL																		
Full-Time	151	3.0	127	2.5	278	5.5	139	2.7	117	2.3	256	5.0	130	2.5	126	2.4	256	4.9
Part-Time	124		107		231		106		92		198		105		95		200	
Special	27		20		47		33		25		58		23		30		53	
Full-Time													2		1		3	
Part-Time													0		0		0	
FTE	143		121		264		129		110		239		123		118		241	
TOTALS																		
Full-Time	1856	37.2	3132	62.8	4988	100	1849	36.3	3239	63.7	5088	100	1899	36.6	3283	63.4	5182	100
Part-Time	1367		2082		3449		1308		2193		3501		1356		2170		3526	
FTE	489		1050		1539		541		1046		1587		543		1113		1656	
TOTAL FTE	1632		2599		4231		1602		2733		4335		1646		2737		4383	

SOURCE: NCHED A-1.1 Resident Credit Enrollment, Fall 1988

TABLE 25  
SUMMARY OF GENERAL CHARACTERISTICS  
FALL, 1988

CLASSIFICATION	BLACK		WHITE		OTHER		TOTALS		
	Male	Female	Male	Female	Male	Female	Male	Female	
Freshman	478	698	38	30	4	10	520	738	1258
Sophomore	361	647	22	24	5	3	388	674	1062
Junior	237	453	36	44	4	8	277	505	782
Senior	208	423	32	32	7	7	247	462	709
Special Undergraduate	19	35	11	18	3	1	33	54	87
Graduate	136	266	62	169	10	17	208	452	660
Special Graduate	55	174	39	95	2	3	96	272	368
First Professional	36	58	90	64	4	4	130	126	256
TOTALS	1530	2754	330	476	39	53	1899	3283	5182

SOURCE: Fall 1988 Student Data File

TABLE 26  
SEX DISTRIBUTION OF HEADCOUNT ENROLLMENT  
1926-1988

FALL SEMESTER	MALE		FEMALE		TOTAL ENROLLMENT
	N	%	N	%	
1926	8	25	24	75	32
1930	148	28	382	72	530
1935	138	23	472	77	610
1940	245	34	475	66	720
1945	253	30	601	70	854
1950	567	44	726	56	1293
1955	576	41	823	59	1399
1960	785	40	1170	60	1955
1965	950	39	1539	61	2489
1970	1182	38	1967	62	3149
1975	1568	40	2332	60	3900
1976	1933	41	2832	59	4765
1977	1901	39	2954	61	4855
1978	1891	39	2919	61	4810
1979	1915	39	3002	61	4917
1980	1897	39	3013	61	4910
1981	1863	38	3081	62	4944
1982	1852	37	3138	63	4990
1983	1937	37	3291	63	5228
1984	1717	38	2835	62	4552
1985	1822	39	2878	61	4700
1986	1856	37	3132	63	4988
1987	1849	36	3239	64	5088
1988	1899	37	3283	63	5182

SOURCE: NCHED A-1.1 Resident Credit Enrollment Report Fall 1988

TABLE 27  
 RACIAL COMPOSITION OF HEADCOUNT ENROLLMENT  
 1979-1988

YEAR	BLACK	%	WHITE	%	OTHER	%	TOTAL
1979	4323	87.9	511	10.4	83	1.7	4917
1980	4320	88.0	502	10.2	88	1.8	4910
1981	4313	87.2	539	10.9	92	1.9	4944
1982	4285	85.9	609	12.2	96	1.9	4990
1983	4464	85.4	647	12.4	117	2.2	5228
Undergraduate	3927	89.9	357	8.2	84	1.9	4368
Graduate	368	70.7	123	23.7	29	5.6	520
Professional	169	49.7	167	49.1	4	1.2	340
1984	3773	82.9	671	14.7	108	2.4	4552
Undergraduate	3243	88.4	345	9.4	80	2.2	3668
Graduate	373	66.5	165	29.4	23	4.1	561
Professional	157	48.6	161	49.9	5	1.6	323
1986	4080	82.0	802	16.0	106	2.0	4988
Undergraduate	3277	88.3	363	9.8	70	1.9	3710
Graduate	484	71.6	173	25.6	19	2.8	676
Professional	157	50.0	153	48.7	4	1.3	314
1987	4228	83.1	775	15.2	85	1.7	5088
Undergraduate	3589	89.7	361	9.0	53	1.3	4003
Graduate	534	64.4	267	32.2	28	3.4	829
Professional	105	41.0	147	57.4	4	1.6	256
1988	4280	82.5	805	15.5	97	1.9	5182
Undergraduate	3556	91.2	286	7.3	56	1.4	3898
Graduate	630	61.3	365	35.5	33	3.2	1028
Professional	94	36.7	154	60.2	8	3.1	256

SOURCE: OE Form 23-2.3 Fall Enrollment and Compliance Report  
 of Institutions of Higher Education, Fall 1988



TABLE 28

GEOGRAPHIC ORIGIN OF STUDENTS  
1980-1988

GEOGRAPHIC ORIGIN	1980		1982		1983		1984		1985		1986		1987		1988	
	N	%	N	%	N	%	N	%	N	%	N	%	N	%	N	%
Durham County	1219	25	1259	25	1261	24	1260	28	1268	27	1402	28	1279	25	1222	24
Adjacent Counties *	700	14	694	14	724	14	707	16	688	15	753	15	792	16	890	17
Other N.C. Counties	2420	49	2379	48	2516	48	2015	44	2078	44	2179	44	2278	45	2324	45
Out-of-State	571	12	585	12	647	12	504	11	603	13	463	9	665	13	687	13
U.S. Territories			1	0	1	0	3	0	5	0	4	0	5	0	6	0
Foreign Countries **			72	1	79	2	63	1	58	1	107	2	69	1	53	1
Unknown											80	2				
TOTALS	4910	100	4990	100	5228	100	4552	100	4700	100	4988	100	5088	100	5182	100

\* Adjacent Counties: Chatham, Granville, Orange, Person, Wake

\*\* Prior to 1981, foreign students were classified as out-of-state

SOURCE: Fall 1988 Student Data File

TABLE 29  
DISTRIBUTION OF STUDENTS BY STATE  
FALL, 1988

STATE	NUMBER	STATE	NUMBER
Alabama	1	Nebraska	0
Alaska	0	Nevada	0
Arizona	0	New Hampshire	0
Arkansas	0	New Jersey	84
California	5	New Mexico	0
Colorado	2	New York	150
Connecticut	14	North Carolina	4436
Delaware	21	North Dakota	0
District of Columbia	42	Ohio	9
Florida	18	Oklahoma	1
Georgia	20	Oregon	0
Hawaii	0	Pennsylvania	52
Idaho	0	Rhode Island	0
Illinois	4	South Carolina	34
Indiana	1	South Dakota	1
Iowa	0	Tennessee	7
Kansas	0	Texas	2
Kentucky	1	Utah	0
Louisiana	4	Vermont	0
Maine	0	Virginia	87
Maryland	89	Washington	3
Massachusetts	18	West Virginia	2
Michigan	12	Wisconsin	2
Minnesota	1	Wyoming	0
Mississippi	0	U.S. Territories	6
Missouri	0	Foreign Countries	53
Montana	0	Unknown	0
		TOTAL	5182

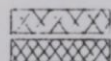
SOURCE: NCHED A-1.3 Home Base of Students, Fall 1988

FIGURE 8  
GEOGRAPHIC ORIGIN BY STATE

UNDERGRADUATE AND GRADUATE STUDENTS  
FALL SEMESTER, 1988



FREQUENCY



1 TO 10  
11 TO 50



51 TO 200  
GREATER THAN 200

TABLE 30

## DISTRIBUTION OF NORTH CAROLINA STUDENTS BY COUNTY

FALL, 1988

COUNTY NUMBER	COUNTY NUMBER	COUNTY NUMBER	COUNTY NUMBER
Alamance 42	Cumberland 222	Johnston 25	Randolph 10
Alexander 1	Currituck 1	Jones 6	Richmond 24
Alleghany 2	Dare 1	Lee 16	Robeson 86
Anson 19	Davidson 11	Lenoir 32	Rockingham 18
Ashe 3	Davie 3	Lincoln 6	Rowan 22
Avery 0	Duplin 46	MdDowell 0	Rutherford 2
Beaufort 17	Durham 1222	Macon 1	Sampson 31
Bertie 23	Edgcombe 107	Madison 0	Scotland 36
Bladen 37	Forsyth 95	Martin 31	Stanley 5
Brunswick 10	Franklin 40	Mecklenburg 156	Stokes 0
Buncombe 11	Gaston 24	Mitchell 0	Surry 3
Burke 7	Gates 3	Montgomery 12	Swain 0
Cabarrus 12	Graham 0	Moore 24	Transylvania 1
Caldwell 7	Granville 94	Nash 57	Tyrell 2
Camden 0	Greene 10	New Hanover 50	Union 3
Carteret 11	Guilford 134	Northampton 38	Vance 81
Caswell 19	Halifax 76	Onslow 22	Wake 509
Catawba 12	Harnett 28	Orange 200	Warren 61
Chatham 31	Haywood 2	Pamlico 10	Washington 13
Cherokee 0	Henderson 5	Pasquotank 17	Watauga 1
Chowan 8	Hertford 32	Pender 13	Wayne 75
Clay 1	Hoke 8	Perquimans 5	Wilkes 2
Cleveland 11	Hyde 5	Person 56	Wilson 64
Columbus 33	Iredell 9	Pitt 70	Yadkin 2
Craven 39	Jackson 1	Polk 2	Yancey 1
			TOTAL 4436

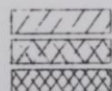
SOURCE: NCHED A-1.3 Home Base of Students Fall, 1988

FIGURE 9  
GEOGRAPHIC ORIGIN BY COUNTY

UNDERGRADUATE AND GRADUATE STUDENTS  
FALL SEMESTER, 1988



FREQUENCY



1 TO 5  
6 TO 20  
21 TO 50



51 TO 100  
GREATER THAN 100

TABLE 31

MEAN AGE OF ENROLLED STUDENTS  
1976-1988

## UNDERGRADUATE

YEAR	MEN		WOMEN		TOTAL		TOTAL MEANS
	FULL- TIME	PART- TIME	FULL- TIME	PART- TIME	FULL- TIME	PART- TIME	
1976	22	28	20	28	20	28	21
1977	22	27	21	27	21	27	22
1978	22	27	21	29	22	28	22
1979	22	27	23	28	22	27	23
1980	21	27	21	29	21	28	22
1981	21	28	21	30	21	29	22
1982	22	28	22	30	22	30	23
1983	21	26	21	28	21	27	23
1984	21	28	21	30	21	29	23
1985	21	28	21	31	21	30	22
1986	21	30	21	32	21	32	24
1987	21	27	21	30	21	29	23
1988	21	28	21	30	21	29	23

## GRADUATE AND FIRST PROFESSIONAL

YEAR	MEN		WOMEN		TOTAL		TOTAL MEANS
	FULL- TIME	PART- TIME	FULL- TIME	PART- TIME	FULL- TIME	PART- TIME	
1976	28	31	26	32	27	32	30
1977	28	32	27	32	28	32	30
1978	28	33	28	32	28	32	30
1979	30	32	29	33	30	33	31
1980	28	32	28	32	28	32	30
1981	29	32	28	33	28	32	31
1982	29	34	29	34	29	34	31
1983	30	34	28	35	29	34	32
1984	30	34	29	34	30	34	32
1985	30	35	29	35	30	35	33
1986	30	34	29	35	30	35	33
1987	30	35	29	36	30	36	34
1988	30	35	30	35	30	35	34

SOURCE: Fall 1988 Student Data File

TABLE 32

UNDERGRADUATE ENROLLMENT BY AGE  
1988

AGE	IN-STATE STUDENTS								OUT-OF-STATE STUDENTS							
	MEN				WOMEN				MEN				WOMEN			
	FULL-TIME N	%	PART-TIME N	%	FULL-TIME N	%	PART-TIME N	%	FULL-TIME N	%	PART-TIME N	%	FULL-TIME N	%	PART-TIME N	%
Less than 18	7	0.2	2	*	14	0.4			8	0.2			15	0.4		
18	155	4.0	9	0.2	306	7.8	14	0.4	49	1.3	1	*	90	2.3	3	0.1
19	179	4.6	10	0.2	352	9.0	28	0.7	65	1.7	2	*	90	2.3	5	0.1
20	145	3.7	11	0.3	300	7.7	23	0.6	41	1.1	6	0.1	70	1.8	6	0.2
21	136	3.5	11	0.3	237	6.1	14	0.4	39	1.0	2	*	47	1.2	3	0.1
22	78	2.0	22	0.6	115	2.9	26	0.6	17	0.4	2	*	26	0.7	3	0.1
23	60	1.5	26	0.7	74	1.9	31	0.8	17	0.4	3	0.1	12	0.3	4	0.1
24	35	0.9	18	0.5	34	0.9	26	0.6	3	0.1			2	*		
25-30	83	2.1	72	1.8	73	1.9	94	2.4	13	0.3	4	0.1	6	0.2	4	0.1
31-35	26	0.7	42	1.1	39	1.0	79	2.0	2	*	3	0.1	1	*		
36-40	7	0.2	20	0.5	27	0.7	61	1.6							1	*
41-50	5	0.1	20	0.5	19	0.5	46	1.2	3	0.1						
51-64	2	*	4	0.1	1	*	11	0.3								
65 and over					1	*										
Unknown																
TOTALS	918	23.5	267	6.8	1592	40.8	453	11.6	257	6.6	23	0.4	359	9.2	29	0.8

\* Less than .05%.

TABLE 33

GRADUATE ENROLLMENT BY AGE  
1988

AGE	IN-STATE STUDENTS								OUT-OF-STATE STUDENTS							
	MEN				WOMEN				MEN				WOMEN			
	FULL-TIME N	%	PART-TIME N	%	FULL-TIME N	%	PART-TIME N	%	FULL-TIME N	%	PART-TIME N	%	FULL-TIME N	%	PART-TIME N	%
Less than 18																
18																
19																
20																
21																
22	4	0.3	1	*	8	0.6	5	0.4								
23	24	1.8	2	*	21	1.6	8	0.6					1	*	1	*
24	10	0.7	6	0.5	14	1.1	18	1.4	6	0.5			4	0.3	1	*
25-30	61	4.8	62	4.8	70	5.5	163	12.7	3	0.2			9	0.7		
31-35	27	2.1	58	4.5	28	2.2	139	10.8	6	0.5	8	0.6	13	1.0	5	0.4
36-40	19	1.5	58	4.5	18	1.4	129	10.0	5	0.4	1	*	4	0.3	3	0.2
41-50	11	0.9	51	4.0	21	1.6	131	10.2			2	*	2	*	1	*
51-64	5	0.4	4	0.3	4	0.3	26	2.0					2	*	1	*
65 and over																
Unknown																
TOTALS	161	12.5	242	18.8	184	14.3	619	48.1	20	1.6	11	0.8	35	2.7	12	0.9

SOURCE: NCHED A-1.6 Survey of Headcount By Age Fall 1988

3

TABLE 34  
 UNDERGRADUATE DEGREES CONFERRED BY FIELD OF STUDY  
 1982-1988

DISCIPLINE, DIVISION AND SPECIALTY	1982		1983		1984		1985		1986		1987		1988	
	N	%	N	%	N	%	N	%	N	%	N	%	N	%
<b>BIOLOGICAL SCIENCES</b>														
Biology, General	22	4.5	20	4.4	21	4.2	28	5.5	20	4.6	17	3.8	24	5.4
<b>BUSINESS AND MANAGEMENT</b>														
Accounting	25	5.1	19	4.2	22	4.4	24	4.7	25	5.8	13	2.9	19	4.3
Business Economics											1	0.2		
Business Management and Administration	74	15.1	67	15.0	112	22.6	115	22.8	48	11.1	74	16.4	67	15.2
Computer & Information Science											2	0.4		
<b>EDUCATION</b>														
Business, Commerce & Distributive Education	14	2.8	10	2.2	7	1.4	4	0.8	2	0.5	3	0.7		
Elementary Education, General	53	10.8	43	9.5	27	5.5	25	4.9	21	4.8	16	3.6	12	2.7
Health Education	12	2.4	15	3.3	4	0.8	13	2.5	6	1.4	4	0.9	17	3.8
Physical Education	10	2.0	5	1.1	5	1.0	3	0.6	15	3.5	3	0.7	7	1.6
<b>FINE AND APPLIED ARTS</b>														
Art	12	2.4	15	3.3	18	3.6	5	1.0	7	1.6	9	2.0	6	1.4
Dramatic Arts	2	0.4			2	0.4	4	0.8	3	0.7	3	0.7	3	0.7
Music	9	1.8	7	1.6	5	1.0	5	1.0	4	0.9	6	1.3	2	0.5
<b>FOREIGN LANGUAGES</b>														
French					2	0.4			1	0.2				
German					2	0.4								
Spanish					1	0.2	1	0.2	1	0.2	1	0.2		
<b>HEALTH PROFESSIONS</b>														
Nursing	23	4.7	28	6.2	49	10.0	53	10.5	44	10.2	45	10.0	29	6.6
<b>HOME ECONOMICS</b>														
Clothing and Textiles	10	2.0	6	1.3	7	1.4	4	0.8	5	1.2				
Foods and Nutrition			8	1.8	5	1.0	5	1.0	6	1.4	1	0.2		
Home Economics, General	9	1.8	8	1.8	12	2.4	5	1.0	4	0.9	20	4.4	13	3.0
<b>LETTERS</b>														
English, General	19	3.9	20	4.4	15	3.0	17	3.4	14	3.2	9	4.2	24	5.5
Philosophy	2	0.4			2	0.4					1	0.2	1	0.2
<b>MATHEMATICS</b>														
Mathematics, General	7	1.4	9	2.0	13	2.6	10	2.7	15	3.5	8	1.8	16	3.7
<b>PHYSICAL SCIENCE</b>														
Chemistry	5	1.0	4	1.0	11	2.2	10	2.0	6	1.4	7	1.6	7	1.6
Physics			1	0.2			2	0.4	1	0.2	1	0.2	3	0.7
<b>PSYCHOLOGY</b>														
Psychology, General	17	3.5	19	4.2	18	3.6	12	2.4	12	2.8	7	1.6	12	2.7
<b>PUBLIC AFFAIRS AND SERVICES</b>														
Criminal Justice Administration	52	10.6	42	9.2	55	11.1	72	14.2	63	14.2	41	9.1	46	10.5
Parks and Recreation	15	3.1	10	2.2	9	1.8					7	1.6	2	0.5
<b>SOCIAL SCIENCES</b>														
Afro-American Studies	8	2.0	7	1.6	7	1.4	12	2.4	7	1.6	10	2.2	9	2.1
History	10	2.0	6	1.3	3	0.6	1	0.2	2	0.5	5	1.1	3	0.7
Geography	58	11.8	48	10.6	43	9.0	58	11.5	82	18.9	101	22.4	96	22.0
Political Science & Government			1	0.2			1	0.2						
Social Sciences, General	21	4.3	34	7.5	19	3.8	17	3.4	19	4.4	25	5.6	20	4.6
Sociology														
TOTALS	489	99.8	452	100.	496	100.	506	100.	433	99.7	440	100	438	100

Correction/memo from Dr. Rogers 5/3/89

none  
 →  
 →  
 →  
 →  
 →

SOURCE: 1988 Graduated Student Data File



TABLE 35  
GRADUATE DEGREES CONFERRED BY FIELD OF STUDY  
1982-1988

DISCIPLINE, DIVISION AND SPECIALTY	1982		1983		1984		1985		1986		1987		1988	
	N	%	N	%	N	%	N	%	N	%	N	%	N	%
<b>BIOLOGICAL SCIENCES</b>														
Biology, General	6	2.4	6	2.6	7	3.1	6	2.7	5	2.6	6	2.9	2	1.0
<b>BUSINESS AND MANAGEMENT</b>														
Business Management and Administration	18	7.3	8	3.4	7	3.1	5	2.3	5	2.6	3	1.4	3	1.6
<b>EDUCATION</b>														
Business, Commerce & Distributive Education	5	2.0	5	2.1	5	2.2	1	0.5	2	1.0	2	1.0	1	0.5
Special Education	31	12.7	29	12.4	19	8.3	11	5.0	10	5.2	12	6.0	6	3.1
Educational Administration & Supervision	9	3.7	18	7.7	10	4.4	14	6.4	9	4.6	9	4.3	3	1.6
Educational Media	9	3.7	6	2.6	23	10.1	9	4.1	4	2.1			2	1.0
Elementary Education, General	17	7.0	18	7.7	17	7.5	24	11.0	10	5.2	13	6.2	10	5.2
Junior High School (Middle Grades) Education													1	0.5
Physical Education	6	2.4	1	0.4	1	0.4	4	1.8	3	1.6	4	2.0	2	1.0
Speech Correction	6	2.4	4	1.7	3	1.3			5	2.6	2	0.9	2	1.0
Student Personnel, Guidance & Counseling	29	11.8	27	11.6	25	11.0	20	9.2	18	9.3	10	4.8	25	13.0
<b>FINE AND APPLIED ARTS</b>														
Music			2	0.9			1	0.5			1	0.5		
<b>FOREIGN LANGUAGES</b>														
French					1	0.4								
<b>HOME ECONOMICS</b>														
Home Economics, General	2	0.8	2	0.9	8	3.5	2	0.9	2	1.0	3	1.4	6	3.1
<b>LAW</b>														
Juris Doctor's	63	26.0	51	21.9	70	30.7	88	40.4	85	44.0	86	41.3	72	37.5
<b>LETTERS</b>														
English, General	4	1.6			2	1.0	3	1.4	2	1.0	4	2	1	0.5
<b>LIBRARY SCIENCE</b>														
Library Science, General	26	10.6	40	17.2	19	8.3	19	8.7	17	8.8	26	12.5	36	18.8
<b>MATHEMATICS</b>														
Mathematics, General	1	0.4	1	0.4	1	0.4	1	0.5	3	1.6	3	1.4	2	1.0
<b>PHYSICAL SCIENCE</b>														
Chemistry, General	1	0.4	2	0.9	1	0.4	1	0.5	3	1.6	3	1.4	2	1.0
<b>PSYCHOLOGY</b>														
Psychology, General	6	2.4	5	2.1	5	2.2	5	2.3	3	1.6	11	5.2	6	3.1
<b>PUBLIC AFFAIRS AND SERVICES</b>														
Public Administration													7	3.6
Parks and Recreation	2	0.8	3	1.3										
<b>SOCIAL SCIENCES</b>														
History	2	0.8	2	0.9	3	1.3	2	0.9	5	2.6	6	2.9	3	1.6
Sociology	2	0.8	3	1.3	1	0.4	2	0.9	2	1.0	1	0.5		
<b>TOTALS</b>	<b>245</b>	<b>100</b>	<b>233</b>	<b>100</b>	<b>228</b>	<b>100</b>	<b>218</b>	<b>100</b>	<b>193</b>	<b>100</b>	<b>205</b>	<b>100</b>	<b>192</b>	<b>100</b>

SOURCE: 1988 Graduated Student Data File

TABLE 36

CHARACTERISTICS OF GRADUATED STUDENTS  
1988

## COLLEGE OF ARTS &amp; SCIENCES

DEGREE	SEX	BLACK N	OTHER N	WHITE N	TOTAL N
BACHELORS	FEMALE	207	3	21	231
	MALE	103	3	15	121
MASTERS	FEMALE	47	1	17	65
	MALE	8	1	6	15
SUMMARY		365	8	59	432

## SCHOOL OF BUSINESS

DEGREE	SEX	BLACK N	OTHER N	WHITE N	TOTAL N
BACHELORS	FEMALE	42	0	3	45
	MALE	39	0	2	41
MASTERS	FEMALE	1	0	0	1
	MALE	2	0	1	3
SUMMARY		84	0	6	90

## SCHOOL OF LAW

DEGREE	SEX	BLACK N	OTHER N	WHITE N	TOTAL N
PROFESSIONAL	FEMALE	15	0	10	25
	MALE	15	2	30	47
SUMMARY		30	2	40	72

## SCHOOL OF LIBRARY &amp; INFORMATION SCIENCE

DEGREE	SEX	BLACK N	OTHER N	WHITE N	TOTAL N
MASTERS	FEMALE	11	4	19	34
	MALE	1	1	0	2
SUMMARY		12	5	19	36

SOURCE: 1988 Graduated Student Data File

TABLE 37

STUDENT FINANCIAL AID  
1987 - 1988

	NUMBER	AVERAGE AWARD	TOTAL AMOUNT
SCHOLARSHIPS, GRANTS AND AWARDS			
UNDERGRADUATE			
Non-Athletic	918	873.08	801,491
Athletic	91	1,537.96	139,955
SEOG (1)	1,278	548.87	701,451
BEOG (2)	1,725	1,438.12	2,480,763
HPEAA (3) and Nursing Assistance	0	0	0
LAW SCHOOL			
Assistance to Professional Students	86	1,011.63	87,000
GRADUATE SCHOOL			
Fellowships, Traineeships, Grants & Scholarships	323	852.23	275,271
Assistantships	45	2,250.98	101,294
STUDENT EMPLOYMENT			
UNDERGRADUATE			
College Work-Study	374	729.67	272,898
PACE Jobs	0	0	
Other Student Employment	240	1,450.15	348,036
GRADUATE SCHOOL			
College Work-Study	3	866.67	2,600
STUDENT LOANS			
UNDERGRADUATE			
Nursing Loans			
Out-of-State GSL (4)	356	3,018.81	1,074,698

(1) Supplemental Education Opportunity Grant

(2) Basic Educational Opportunity Grant

(3) Health Professions Education Assistance Act

(4) Guaranteed Student Loans (Undergraduate, Graduate and 1st Professional)

TABLE 38

FINANCIAL AID AWARDS  
1984-1988

	1984-1985	1985-1986	1986-1987	1987-1988
TOTAL NUMBER OF APPLICANTS	4069	4701	5575	4473
APPLICANTS WHO ACTUALLY ENROLLED	3869	3866	4504	3930
NUMBER OF AWARDS AND LOANS	7741	7974	7456	7597
UNDUPLICATED NUMBER OF AID RECIPIENTS	3316	3341	2815	3433
% OF ENROLLED STUDENTS RECEIVING AID	70.6	67.0	55.3	66.2
DOLLAR AMOUNT OF AWARDS AND LOANS	\$8,281,385	\$8,876,466	\$9,165,086	\$9,411,867
MEAN AWARD	\$1.070	\$1,113	\$1,229	\$1,239
MEAN AWARD PER RECIPIENT	\$2,497	\$2,657	\$3,256	\$2,742

SOURCE: Financial Assistance to Student Institutions (OCRB3), Fall 1988

## FACTS ABOUT FACULTY AND STAFF

### LIST OF TABLES AND FIGURES

TABLE	39:	Instructional Staffing Patterns by Department and Rank, Fall 1984-1988	83
TABLE	40:	Tenure for Full-Time Faculty by Department, Fall 1988	87
TABLE	41:	Tenure for Full-Time Faculty by Rank and Sex, Fall 1984-1988	88
FIGURE	10:	Ten-Year Change of Rank and Tenure Status Full-Time Faculty for 1978 and 1988	89
TABLE	42:	Highest Earned Degree for Full-Time Faculty by Department, Fall 1988	90
TABLE	43:	Summary of Highest Earned Degrees for Full-Time Faculty, 1983-1988	91
TABLE	44:	Race and Sex of Full-Time Faculty by Department and Academic Rank, Fall 1988	92
TABLE	45:	Mean Salaries by Rank, 1970-1988	96
TABLE	46:	Mean Salaries of Professors by Race and Sex, 1976-1988	97
TABLE	47:	Mean Salaries of Associate Professors by Race and Sex, 1976-1988	97
TABLE	48:	Mean Salaries of Assistant Professors by Race and Sex, 1976-1988	98
TABLE	49:	Mean Salaries of Instructors by Race and Sex, 1976-1988	98
TABLE	50:	Summary of Mean Salaries for Fall 1988 by Academic Rank, Race, and Sex	99
TABLE	51:	Full-Time EPA and SPA Employees by Occupational Activity Category, Race and Sex, Fall 1988	100
TABLE	52:	New Full-Time EPA and SPA Employees By Occupational Activity Category, Race and Sex, Fall 1988	101
TABLE	53:	Retirements, Resignations and Dismissals of Full-Time EPA and SPA Employees, Fall 1988	102
TABLE	54:	Promotions of Full-Time EPA and SPA Employees, Fall 1988	103
TABLE	55:	Summary of Mean Salaries for Fall 1988 By Occupational Activity Category, Race and Sex	104

TABLE 39

 INSTRUCTIONAL STAFFING PATTERNS  
 BY DEPARTMENT AND RANK, FALL 1984 - 1988

DEPARTMENT AND ACADEMIC RANK	1984	1985	1986	1987	1988		TOTAL	FTE
					FULL-TIME	PART-TIME		
<b>Art</b>								
Professor				1	1		1	1.0
Associate Professor	4	4	4	4	3	1	4	3.8
Assistant Professor	1	4	2	1	1		1	1.0
Instructor		2	2					
Lecturer		2	3	1	1		1	1.0
Adjunct or Visiting				6		6	6	2.0
Total	5	12	11	13	6	7	13	8.8
<b>Biology</b>								
Professor	3	3	3	3	3		3	3.0
Associate Professor	5	7	7	6	6		6	6.0
Assistant Professor	2	3	2	0				
Instructor								
Lecturer	2	4	3	1		1	1	0.3
Adjunct or Visiting	4	1	1	10	2	8	10	3.5
Total	16	18	16	20	11	9	20	12.8
<b>Business</b>								
Professor	4	3	2	4	4		4	4.0
Associate Professor	14	10	10	10	10		10	10.0
Assistant Professor	20	19	18	14	12	2	14	13.5
Instructor	3	2	1	3	3		3	3.0
Lecturer	2	5	4	1		1	1	0.8
Adjunct or Visiting	2			5		5	5	1.5
Total	45	39	35	37	29	8	37	32.8
<b>Chemistry</b>								
Professor	3	3	3	3	3		3	3.0
Associate Professor	2	2	1	1	1		1	1.0
Assistant Professor	1	2	1	1	1		1	1.0
Instructor								
Lecturer			2					
Adjunct or Visiting				3	1	2	3	1.4
Total	6	7	7	8	6	2	8	6.4
<b>Drama</b>								
Professor	1	1	1	1	1		1	1.0
Associate Professor	2	2	1	2	2		2	2.0
Assistant Professor	1	2	2	2	2		2	2.0
Instructor								
Lecturer		1	2					
Adjunct or Visiting				2		2	2	0.2
Total	4	6	6	7	5	2	7	5.2
<b>Education</b>								
Professor	9	8	9	10	9	1	10	9.1
Associate Professor	9	8	8	6	6		6	6.0
Assistant Professor	6	8	7	4	4		4	4.0
Instructor				2	2		2	2.0
Lecturer	1	2	2					
Adjunct or Visiting	1	1	1	15	2	13	15	5.8
Total	26	27	27	37	23	14	37	26.9
<b>English</b>								
Professor	3	4	4	4	4		4	4.0
Associate Professor	8	7	6	6	6		6	6.0
Assistant Professor	8	9	8	9	9		9	9.0
Instructor		1		4	4		4	4.0
Lecturer	1		1					
Adjunct or Visiting	1	1	1	9	5	4	9	7.1
Total	21	22	20	32	28	4	32	30.1

TABLE 39  
(continued)

INSTRUCTIONAL STAFFING PATTERNS  
BY DEPARTMENT AND RANK, FALL 1984 - 1988

DEPARTMENT AND ACADEMIC RANK	1984	1985	1986	1987	1988		TOTAL	FTE
					FULL-TIME	PART-TIME		
<b>Geography</b>								
Professor	1	1	1	1	1		1	1.0
Associate Professor	3	3	3	3	3		3	3.0
Assistant Professor	1	1	1	1	1		1	1.0
Instructor								
Lecturer	1	1	2	1	1		1	1.0
Adjunct or Visiting				0				
Total	6	6	7	6	6		6	6.0
<b>Health Education</b>								
Professor	1	1	1					
Associate Professor	1	1	1	1		1	1	0.6
Assistant Professor		1	1		1		1	1.0
Instructor	3	2	2	2	2		2	2.0
Lecturer		1	1	0				
Adjunct or Visiting				6		6	6	1.5
Total	5	6	6	9	3	7	10	5.1
<b>History/Social Science</b>								
Professor	3	4	5	5	4	1	5	4.4
Associate Professor	3	3	2	0				
Assistant Professor	4	4	4	4	4		4	4.0
Instructor								
Lecturer	1	2	1					
Adjunct or Visiting				3		3	3	1.6
Total	11	13	12	12	8	4	12	10.0
<b>Home Economics</b>								
Professor								
Associate Professor	2	2	3	3	3		3	3.0
Assistant Professor	4	6	5	4	4		4	4.0
Instructor	1	2	1			1	1	0.5
Lecturer	4	2	2	0				
Adjunct or Visiting	1	1		5	1	4	5	3.1
Total	12	13	11	12	8	5	13	10.6
<b>Law</b>								
Professor	7	7	7	6	6		6	6.0
Associate Professor	2	2	3	4	4		4	4.0
Assistant Professor	4	5	3	3	3		3	3.0
Instructor		1	1					
Lecturer	3	4	3	1		1	1	0.5
Adjunct or Visiting		4	6	8	3	5	8	4.3
Total	16	23	23	22	16	6	22	17.8
<b>Library Science</b>								
Professor	2	2	2	2	2		2	2.0
Associate Professor	2	2	1	2	2		2	2.0
Assistant Professor	4	3	3	1	1		1	1.0
Instructor				1	1		1	1.0
Lecturer	1	2	4					
Adjunct or Visiting		1	1	6	1	5	6	2.7
Total	9	10	11	12	7	5	12	8.7
<b>Mathematics</b>								
Professor	1	1	1	1	1		1	1.0
Associate Professor	5	5	5	5	4	1	5	4.8
Assistant Professor	3	3	3	3	3		3	3.0
Instructor	1	4	4	3	3		3	3.0
Lecturer	1	3	3	0				
Adjunct or Visiting	1	1	1	12	1	11	12	5.0
Total	12	17	17	24	12	12	24	16.8

TABLE 39  
(continued)

INSTRUCTIONAL STAFFING PATTERNS  
BY DEPARTMENT AND RANK, FALL 1984 - 1988

DEPARTMENT AND ACADEMIC RANK	1984	1985	1986	1987	1988		TOTAL	FTE
					FULL-TIME	PART-TIME		
<b>Modern Foreign Language</b>								
Professor	1	1	1	1	1		1	1.0
Associate Professor	5	5	3	4	4		4	4.0
Assistant Professor	5	5	4	3	3		3	3.0
Instructor								
Lecturer		3	2	1	1		1	1.0
Adjunct or Visiting			1	2		2	2	1.5
Total	11	14	11	11	9	2	11	10.5
<b>Music</b>								
Professor	2	2	2	1	1		1	1.0
Associate Professor	3	3	3	3	3		3	3.0
Assistant Professor	5	5	3	3	3		3	3.0
Instructor	1	1	1					
Lecturer		2	3			1	1	0.9
Adjunct or Visiting	1	1		3		3	3	1.3
Total	12	14	12	10	7	4	11	9.2
<b>Nursing</b>								
Professor					1		1	1.0
Associate Professor	2	3	3	1	1		1	1.0
Assistant Professor	10	11	10	6	6		6	6.0
Instructor	1	1		1		1	1	0.5
Lecturer	1	4	8					
Adjunct or Visiting			1	7	1	6	7	2.5
Total	14	19	22	15	9	7	16	11.0
<b>Philosophy</b>								
Professor								
Associate Professor	1	1	1	1	1		1	1.0
Assistant Professor	1	1	1	1	1		1	1.0
Instructor								
Lecturer								
Adjunct or Visiting								
Total	2	2	2	2	2		2	2.0
<b>Physical Education</b>								
Professor	1	1	1					
Associate Professor	3	4	4	5	5		5	5.0
Assistant Professor	8	9	9	7	7		7	7.0
Instructor	2	2	2	3	3		3	3.0
Lecturer	1	1	1					
Adjunct or Visiting	1	2	1	4		4	4	1.4
Total	16	19	18	19	15	4	19	16.4
<b>Physics</b>								
Professor	4	4	3	4	3	1	4	3.8
Associate Professor								
Assistant Professor								
Instructor								
Lecturer			2					
Adjunct or Visiting	1	1	1	1		1	1	0.7
Total	5	5	6	5	3	2	5	4.5
<b>Political Science</b>								
Professor	1	2	2	4	4		4	4.0
Associate Professor	6	4	4	2	2		2	2.0
Assistant Professor	3	6	7	5	4	1	5	4.8
Instructor		2	1	1	1		1	1.0
Lecturer	1	3	6	1	1		1	1.0
Adjunct or Visiting	1	1		12	1	11	12	4.3
Total	12	18	20	25	13	12	25	17.1



TABLE 39  
(continued)

INSTRUCTIONAL STAFFING PATTERNS  
BY DEPARTMENT AND RANK, FALL 1984 - 1988

DEPARTMENT AND ACADEMIC RANK	1984	1985	1986	1987	1988		TOTAL	FTE
					FULL-TIME	PART-TIME		
Psychology								
Professor	1	1	1	1	1		1	1.0
Associate Professor	3	3	2	1	1		1	1.0
Assistant Professor	1	2	3	2	2		2	2.0
Instructor	1							
Lecturer		1						
Adjunct or Visiting				8	2	6	8	2.8
Total	6	7	6	12	6	6	12	6.8
Sociology								
Professor	2	2	2	2	2		2	2.0
Associate Professor	2	2	3	2	2		2	2.0
Assistant Professor	2	4	2	3	2	1	3	2.8
Instructor								
Lecturer			1					
Adjunct or Visiting	1			3		3	3	0.4
Total	7	8	8	10	6	4	10	7.2
SUMMARY BY RANK AND YEAR								
Professor	49	51	51	55	52	3	55	53.3
Associate Professor	84	84	78	72	69	3	72	71.2
Assistant Professor	90	113	99	78	74	4	78	77.1
Instructor	21	30	26	21	19	2	21	20.0
Lecturer	19	47	60	8	4	4	8	6.5
Adjunct or Visiting	17	16	20	130	20	110	130	54.6
GRAND TOTAL BY ACADEMIC YEAR	280	341	334	364	238	126	364	282.7

SOURCE: Fall 1988 Personnel Data File

TABLE 40

TENURE FOR FULL-TIME FACULTY BY DEPARTMENT  
FALL, 1988

DEPARTMENT	TENURED		ON TENURE TRACK		NOT ON TRACK		TOTAL
		%		%		%	
Art	3	50.0	2	33.3	1	16.7	6
Biology	8	72.7	1	9.1	2	18.2	11
Business	16	55.2	12	41.4	1	3.4	29
Chemistry	5	83.3			1	16.7	6
Drama	3	60.0	2	40.0	0	0.0	5
Education	15	65.2	4	17.4	4	17.4	23
English	14	50.0	6	21.4	8	28.6	28
Geography	5	83.3			1	16.7	6
Health Education	2	66.7	1	33.3			3
History/Social Science	5	62.5	3	37.5			8
Home Economics	4	50.0	3	37.5	1	12.5	8
Law	6	37.5	7	43.8	3	18.7	16
Library Science	4	57.1	2	28.6	1	14.3	7
Mathematics	7	58.3	2	16.7	3	25.0	12
Modern Foreign Language	8	88.9			1	11.1	9
Music	6	85.7	1	14.3	0	0.0	7
Nursing	2	22.2	6	66.7	1	11.1	9
Philosophy	2	100.0					2
Physical Education	10	66.7	3	20.0	2	13.3	15
Physics	3	100.0					3
Political Science	6	46.1	4	30.8	3	23.1	13
Psychology	2	33.3	2	33.3	2	33.3	6
Sociology	3	50.0	3	50.0	0	0.0	6
SUMMARY	139	58.4	64	26.9	35	14.7	238

NOTE: Data included in this table are for instructional faculty only.  
Those on leave are admitted.

SOURCE: Fall 1988 Personnel Data File

TABLE 41

TENURE FOR FULL-TIME FACULTY, BY RANK AND SEX  
1984-1988

YEAR AND ACADEMIC RANK	MEN			WOMEN			TOTAL		
	TOTAL	N TENURED	% TENURED	TOTAL	N TENURED	% TENURED	GRAND TOTAL	N TENURED	% TENURED
1984									
Professor	38	37	97.4	11	11	100.0	49	48	98.0
Associate Professor	55	32	58.2	29	22	75.9	84	54	64.3
Assistant Professor	45	24	53.3	43	12	27.9	88	36	40.9
Instructor	5	2	40.0	14	5	35.7	19	7	36.8
Lecturer	3			1			4		
Other Faculty	3			11			14		
Total	149	95	63.8	109	50	45.9	258	145	56.2
1985									
Professor	39	36	92.3	12	12	100.0	51	48	94.1
Associate Professor	54	36	66.7	30	23	76.7	84	59	70.2
Assistant Professor	61	22	36.1	49	14	28.6	110	36	32.7
Instructor	7	2	28.6	17	5	29.4	24	7	29.2
Lecturer	14			16			30		
Other Faculty	4			11			15		
Total	179	96	53.6	135	54	40.0	314	150	47.8
1986									
Professor	39	36	92.3	12	12	100.0	51	48	94.1
Associate Professor	52	38	73.1	26	20	76.9	78	58	74.4
Assistant Professor	54	23	42.6	45	14	31.1	99	37	37.4
Instructor	6	2	33.3	13	4	30.8	19	6	31.6
Lecturer	6			4			10		
Other Faculty	3			16			19		
Total	160	99	61.9	116	50	43.1	276	149	54.0
1987									
Professor	38	37	97.4	10	10	100.0	48	47	97.9
Associate Professor	51	39	76.5	26	21	80.8	77	60	77.9
Assistant Professor	49	23	46.9	39	12	30.8	88	35	39.8
Instructor	6	2	33.3	12	3	25.0	18	5	27.8
Lecturer	4			4			8		
Other Faculty	14			9			23		
Total	162	101	62.3	100	46	46.0	262	147	56.1
1988									
Professor	42	41	97.6	10	9	90.0	52	50	96.2
Associate Professor	45	35	77.8	24	17	70.8	69	52	75.4
Assistant Professor	45	19	42.2	29	13	44.8	74	32	43.2
Instructor	6	2	33.3	13	3	23.1	19	5	26.3
Lecturer	3			1			4		
Other Faculty	9			11			20		
Total	150	97	64.7	88	42	47.7	238	139	58.4

SOURCE: Fall 1988 Personnel Data File

FIGURE 10

# TEN-YEAR CHANGE OF RANK AND TENURE STATUS FULL-TIME FACULTY FOR 1978 AND 1988

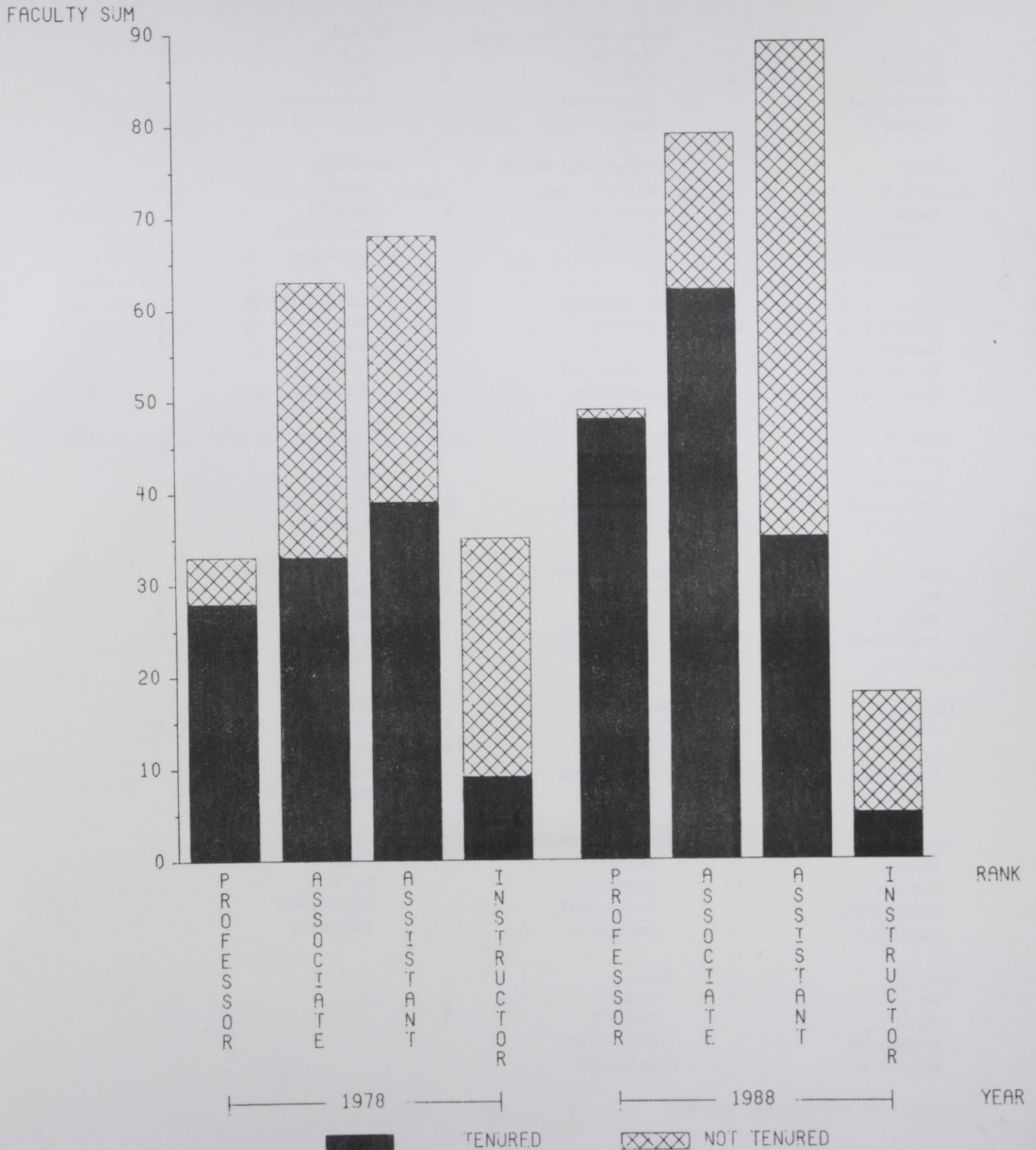


TABLE 42

HIGHEST EARNED DEGREE FOR FULL-TIME FACULTY  
BY DEPARTMENT, FALL 1980

DEPARTMENT AND DEGREES	NUMBER	DEPARTMENT AND DEGREES	NUMBER	DEPARTMENT AND DEGREES	NUMBER
Art		Health Education		Nursing	
Doctor's	1	Doctor's	1	Doctor's	3
Master's	5	Master's	2	Master's	5
Professional		Professional		Professional	
Bachelor's		Bachelor's		Bachelor's	1
Biology		History/Social Science		Philosophy	
Doctor's	10	Doctor's	6	Doctor's	1
Master's	1	Master's	2	Master's	
Professional		Professional		Professional	
Bachelor's		Bachelor's		Bachelor's	1
Business		Home Economics		Physical Education	
Doctor's	21	Doctor's	6	Doctor's	7
Master's	7	Master's	2	Master's	8
Professional	1	Professional		Professional	
Bachelor's		Bachelor's		Bachelor's	
Chemistry		Law		Physics	
Doctor's	5	Doctor's		Doctor's	3
Master's	1	Master's	6	Master's	
Professional		Professional	10	Professional	
Bachelor's		Bachelor's		Bachelor's	
Drama		Library Science		Political Science	
Doctor's	3	Doctor's	5	Doctor's	9
Master's	2	Master's	2	Master's	3
Professional		Professional		Professional	1
Bachelor's		Bachelor's		Bachelor's	
Education		Mathematics		Psychology	
Doctor's	18	Doctor's	6	Doctor's	6
Master's	5	Master's	6	Master's	
Professional		Professional		Professional	
Bachelor's		Bachelor's		Bachelor's	
English		Modern Foreign Language		Sociology	
Doctor's	14	Doctor's	6	Doctor's	6
Master's	13	Master's	3	Master's	
Professional		Professional		Professional	
Bachelor's	1	Bachelor's		Bachelor's	
Geography		Music			
Doctor's	6	Doctor's	4		
Master's		Master's	3		
Professional		Professional			
Bachelor's		Bachelor's			

TABLE 43

SUMMARY OF HIGHEST EARNED DEGREES FOR  
FULL-TIME FACULTY, 1983 - 1988

DEGREE	1983		1984		1985		1986		1987		1988	
	N	%	N	%	N	%	N	%	N	%	N	%
Doctor's	163	51.7	151	58.5	168	53.3	159	57.6	153	58.4	147	61.8
Master's	122	38.7	88	34.1	110	34.9	87	31.5	87	33.2	76	31.9
Bachelor's	8	2.5	4	1.6	13	4.1	8	2.9	2	0.8	3	1.3
Professional	20	6.3	15	5.8	24	7.6	21	7.6	18	6.9	12	5.0
Other	2	0.6					1	0.4	2	0.8		
TOTAL	315	100	258	100	315	100	276	100	262	100	238	100

SOURCE: Fall 1988 Personnel Data File

TABLE 42

HIGHEST EARNED DEGREE FOR FULL-TIME FACULTY  
BY DEPARTMENT, FALL 1988

DEPARTMENT AND DEGREES	NUMBER	DEPARTMENT AND DEGREES	NUMBER	DEPARTMENT AND DEGREES	NUMBER
Art		Health Education		Nursing	
Doctor's	1	Doctor's	1	Doctor's	3
Master's	5	Master's	2	Master's	5
Professional		Professional		Professional	
Bachelor's		Bachelor's		Bachelor's	1
Biology		History/Social Science		Philosophy	
Doctor's	10	Doctor's	6	Doctor's	1
Master's	1	Master's	2	Master's	
Professional		Professional		Professional	
Bachelor's		Bachelor's		Bachelor's	1
Business		Home Economics		Physical Education	
Doctor's	21	Doctor's	6	Doctor's	7
Master's	7	Master's	2	Master's	8
Professional	1	Professional		Professional	
Bachelor's		Bachelor's		Bachelor's	
Chemistry		Law		Physics	
Doctor's	5	Doctor's		Doctor's	3
Master's	1	Master's	6	Master's	
Professional		Professional	10	Professional	
Bachelor's		Bachelor's		Bachelor's	
Drama		Library Science		Political Science	
Doctor's	3	Doctor's	5	Doctor's	9
Master's	2	Master's	2	Master's	3
Professional		Professional		Professional	1
Bachelor's		Bachelor's		Bachelor's	
Education		Mathematics		Psychology	
Doctor's	18	Doctor's	6	Doctor's	6
Master's	5	Master's	6	Master's	
Professional		Professional		Professional	
Bachelor's		Bachelor's		Bachelor's	
English		Modern Foreign Language		Sociology	
Doctor's	14	Doctor's	6	Doctor's	6
Master's	13	Master's	3	Master's	
Professional		Professional		Professional	
Bachelor's	1	Bachelor's		Bachelor's	
Geography		Music			
Doctor's	6	Doctor's	4		
Master's		Master's	3		
Professional		Professional			
Bachelor's		Bachelor's			

TABLE 43

SUMMARY OF HIGHEST EARNED DEGREES FOR  
FULL-TIME FACULTY, 1983 - 1988

DEGREE	1983		1984		1985		1986		1987		1988	
	N	%	N	%	N	%	N	%	N	%	N	%
Doctor's	163	51.7	151	58.5	168	53.3	159	57.6	153	58.4	147	61.8
Master's	122	38.7	88	34.1	110	34.9	87	31.5	87	33.2	76	31.9
Bachelor's	8	2.5	4	1.6	13	4.1	8	2.9	2	0.8	3	1.3
Professional	20	6.3	15	5.8	24	7.6	21	7.6	18	6.9	12	5.0
Other	2	0.6					1	0.4	2	0.8		
TOTAL	315	100	258	100	315	100	276	100	262	100	238	100

SOURCE: Fall 1988 Personnel Data File



TABLE 44

RACE AND SEX OF FULL-TIME FACULTY BY  
DEPARTMENT AND ACADEMIC RANK, FALL 1988

DEPARTMENT AND ACADEMIC RANK	BLACK		WHITE		OTHER		TOTAL
	MEN	WOMEN	MEN	WOMEN	MEN	WOMEN	
ART							
Professor			1				1
Associate Professor	2			1			3
Assistant Professor		1					1
Instructor							1
Lecturer	1						1
Adjunct or Visiting							6
TOTAL	3	1	1	1			6
BIOLOGY							
Professor	2			1			3
Associate Professor	4		1		1		6
Assistant Professor							
Instructor							
Lecturer							2
Adjunct or Visiting			2				11
TOTAL	6		3	1	1		11
BUSINESS							
Professor	1		2		1		4
Associate Professor	3	2	5				10
Assistant Professor	7	1	3		1		12
Instructor	1	1		1			3
Lecturer							
Adjunct or Visiting					2		29
TOTAL	12	4	10	1	2		29
CHEMISTRY							
Professor	1		2				3
Associate Professor					1		1
Assistant Professor	1						1
Instructor							
Lecturer							1
Adjunct or Visiting					1		6
TOTAL	2		2		2		6
DRAMA							
Professor			1				1
Associate Professor	1			1			2
Assistant Professor	1	1					2
Instructor							
Lecturer							
Adjunct or Visiting							5
TOTAL	2	1	1	1			5
EDUCATION							
Professor	2	1	3	1	2		9
Associate Professor		2		2			4
Assistant Professor	1	2		1			4
Instructor		2					2
Lecturer							
Adjunct or Visiting	2	2					4
TOTAL	5	9	3	4	2		23
ENGLISH							
Professor		1	1	2			4
Associate Professor	1	3		2			6
Assistant Professor	4	2	2			1	9
Instructor		3		1			4
Lecturer							
Adjunct or Visiting		4		1			5
TOTAL	5	13	3	6		1	28

TABLE 44  
(continued)

RACE AND SEX OF FULL-TIME FACULTY BY  
DEPARTMENT AND ACADEMIC RANK, FALL 1988

DEPARTMENT AND ACADEMIC RANK	BLACK		WHITE		OTHER		TOTAL
	MEN	WOMEN	MEN	WOMEN	MEN	WOMEN	
<b>GEOGRAPHY</b>							
Professor	1						1
Associate Professor	2		1				3
Assistant Professor	1						1
Instructor							
Lecturer	1						1
Adjunct or Visiting							
TOTAL	5		1				6
<b>HEALTH EDUCATION</b>							
Professor							
Associate Professor							
Assistant Professor	1						1
Instructor		2					2
Lecturer							
Adjunct or Visiting							
TOTAL	1	2					3
<b>HISTORY/SOCIAL SCIENCE</b>							
Professor	3	1					4
Associate Professor							
Assistant Professor	3	1					4
Instructor							
Lecturer							
Adjunct or Visiting							
TOTAL	6	2					8
<b>HOME ECONOMICS</b>							
Professor							
Associate Professor	1	2					3
Assistant Professor	1	3					4
Instructor							
Lecturer							
Adjunct or Visiting			1				1
TOTAL	2	5	1				8
<b>LAW</b>							
Professor	2		2	2			6
Associate Professor	1	1	1	1			4
Assistant Professor	2	1					3
Instructor							
Lecturer							
Adjunct or Visiting	1	2					3
TOTAL	6	4	3	3			16
<b>LIBRARY SCIENCE</b>							
Professor	1		1				2
Associate Professor		1	1				2
Assistant Professor		1					1
Instructor			1				1
Lecturer							
Adjunct or Visiting		1					1
TOTAL	1	3	3				7
<b>MATHEMATICS</b>							
Professor	1						1
Associate Professor	1		3				4
Assistant Professor	2		1				3
Instructor	1			1		1	3
Lecturer							
Adjunct or Visiting	1						1
TOTAL	6		4	1		1	12

TABLE 44  
(continued)

RACE AND SEX OF FULL-TIME FACULTY BY  
DEPARTMENT AND ACADEMIC RANK, FALL 1988

DEPARTMENT AND ACADEMIC RANK	BLACK		WHITE		OTHER		TOTAL
	MEN	WOMEN	MEN	WOMEN	MEN	WOMEN	
<b>MODERN FOREIGN LANGUAGES</b>							
Professor	1						1
Associate Professor			1	2	1		4
Assistant Professor			2	1			3
Instructor							
Lecturer			1				1
Adjunct or Visiting							
TOTAL	1		4	3	1		9
<b>MUSIC</b>							
Professor	1						1
Associate Professor		1	1	1			3
Assistant Professor	2	1					3
Instructor							
Lecturer							
Adjunct or Visiting							
TOTAL	3	2	1	1			7
<b>NURSING</b>							
Professor		1					1
Associate Professor		1					1
Assistant Professor	1	4			1		6
Instructor							
Lecturer							
Adjunct or Visiting		1					1
TOTAL	1	7		1			9
<b>PHILOSOPHY</b>							
Professor							
Associate Professor			1				1
Assistant Professor			1				1
Instructor							
Lecturer							
Adjunct or Visiting							
TOTAL			2				2
<b>PHYSICAL EDUCATION</b>							
Professor							
Associate Professor	4			1			5
Assistant Professor	4	2		1			7
Instructor	2	1					3
Lecturer							
Adjunct or Visiting							
TOTAL	10	3		2			15
<b>PHYSICS</b>							
Professor			2				2
Associate Professor					1		1
Assistant Professor							
Instructor							
Lecturer							
Adjunct or Visiting							
TOTAL			2		1		3
<b>POLITICAL SCIENCE</b>							
Professor	1		2				3
Associate Professor	1		1		1		3
Assistant Professor	1		2	1			4
Instructor	1						1
Lecturer	1						1
Adjunct or Visiting	1						1
TOTAL	6		5	1	1		13

TABLE 44  
(continued)

RACE AND SEX OF FULL-TIME FACULTY BY  
DEPARTMENT AND ACADEMIC RANK, FALL 1988

DEPARTMENT AND ACADEMIC RANK	BLACK		WHITE		OTHER		TOTAL
	MEN	WOMEN	MEN	WOMEN	MEN	WOMEN	
PSYCHOLOGY							
Professor	1						1
Associate Professor	1						1
Assistant Professor	1	1					2
Instructor							
Lecturer							
Adjunct or Visiting	2						2
TOTAL	5	1					6
SOCIOLOGY							
Professor	1		1				2
Associate Professor	1		1				2
Assistant Professor	1	1					2
Instructor							
Lecturer							
Adjunct or Visiting							
TOTAL	3	1	2				6

SUMMARY	BLACK				WHITE				OTHER				TOTAL			
	MEN		WOMEN		MEN		WOMEN		MEN		WOMEN		MEN		WOMEN	
	N	%	N	%	N	%	N	%	N	%	N	%	N	%	N	%
Professor	19	36.5	4	7.7	18	34.6	6	11.5	5	9.6			42	80.8	10	19.2
Associate Professor	24	42.1	14	24.6	10	17.5	6	10.5	3	5.3			37	64.9	20	35.1
Assistant Professor	34	39.5	22	25.6	18	20.9	10	11.6	1	1.2	1	1.2	53	61.6	33	38.4
Instructor	5	26.3	9	47.4	1	5.3	3	15.8			1	5.3	6	31.6	13	68.4
Lecturer	3	75.0					1	25.0				0.0	3	75.0	1	25.0
Adjunct or Visiting	5	25.0	10	50.0	3	15.0	1	5.0	1	5.0			9	45.0	11	55.0
TOTAL	90	25.0	59	24.8	50	21.0	27	11.3	10	4.2	2	0.8	150	63.0	88	37.0

SOURCE: Fall 1988 Personnel Data File

TABLE 45

MEAN SALARIES BY RANK\*  
1970-1988

YEAR	PROFESSOR	ASSOCIATE PROFESSOR	ASSISTANT PROFESSOR	INSTRUCTOR
1970	\$15,952	\$13,326	\$10,222	\$8,045
1971	16,663	13,387	10,878	9,078
1972	17,588	14,321	11,248	9,698
1973	18,306	14,842	11,855	9,734
1974	19,353	16,150	13,012	10,950
1975	19,187	15,600	12,937	10,922
1976	20,777	17,069	14,073	11,928
1977	22,641	18,222	15,057	12,790
1978	24,874	19,492	16,240	13,921
1979	26,956	20,656	17,305	14,199
1980	29,735	23,027	19,337	15,415
1981	30,514	24,411	20,718	17,825
1982	31,558	25,491	22,123	18,545
1983	34,236	26,671	23,442	19,455
1984	36,350	29,319	26,456	21,847
1985	40,917	32,022	28,451	22,144
1986	42,444	33,749	29,478	22,740
1987	44,122	35,680	30,900	25,679
1988	45,475	37,648	32,371	28,709

\* Salary data adjusted to nine-month salary scales for full-time instructional faculty

SOURCE: Fall 1988, Personnel Data File

TABLE 46

MEAN SALARIES OF PROFESSORS\*  
BY RACE AND SEX, 1976-1988

YEAR	BLACK		WHITE		OTHER	
	MEN	WOMEN	MEN	WOMEN	MEN	WOMEN
1976	\$21,788	\$20,953	\$20,140	\$19,160	\$19,475	--
1977	23,381	22,418	22,842	21,388	20,531	--
1978	25,330	25,267	24,229	23,534	25,916	--
1979	28,052	27,011	26,521	25,321	25,508	--
1980	30,879	31,545	28,834	28,059	29,539	--
1981	32,066	31,019	30,257	27,988	29,287	--
1982	32,505	32,370	31,742	29,387	30,961	--
1983	36,163	33,975	33,737	32,367	31,620	--
1984	36,533	35,147	37,284	35,775	36,205	--
1985	41,373	38,867	42,113	40,182	37,482	--
1986	43,176	37,461	43,890	42,423	39,341	--
1987	45,177	41,379	45,223	42,209	41,326	--
1988	46,647	44,261	44,186	48,157	43,652	--

\* Salary data adjusted to nine-month salary scales for full-time instructional faculty

TABLE 47

MEAN SALARIES OF ASSOCIATE PROFESSORS\*  
BY RACE AND SEX, 1976-1988

YEAR	BLACK		WHITE		OTHER	
	MEN	WOMEN	MEN	WOMEN	MEN	WOMEN
1976	\$17,322	\$17,137	\$17,615	\$15,949	\$17,922	\$16,188
1977	--	--	--	--	--	--
1978	19,726	19,185	20,357	18,358	19,164	18,764
1979	21,128	20,545	21,598	19,100	19,409	20,208
1980	24,039	21,832	23,667	22,157	19,856	23,229
1981	25,272	23,420	24,877	23,439	23,528	--
1982	26,318	24,855	26,035	24,773	22,228	24,810
1983	27,762	26,746	26,843	24,517	25,583	25,705
1984	30,485	29,796	29,458	27,096	26,570	28,275
1985	33,399	32,489	31,814	29,638	29,483	32,603
1986	35,044	34,234	33,449	31,420	30,957	--
1987	36,293	38,005	35,071	32,908	32,564	--
1988	37,506	40,445	37,846	34,861	33,882	--

\* Salary data adjusted to nine-month salary scales for full-time instructional faculty

SOURCE: Fall 1988 Personnel Data File

TABLE 48

MEAN SALARIES OF ASSISTANT PROFESSORS\*  
BY RACE AND SEX, 1976-1988

YEAR	BLACK		WHITE		OTHER	
	MEN	WOMEN	MEN	WOMEN	MEN	WOMEN
1976	\$14,708	\$13,559	\$13,717	\$11,871	\$16,000	\$ --
1977	15,624	14,823	14,589	14,462	17,040	--
1978	16,524	16,016	16,329	15,732	17,000	--
1979	17,488	17,187	17,336	16,722	17,900	--
1980	19,999	19,379	18,940	17,455	18,480	--
1981	21,383	20,456	20,142	19,820	--	--
1982	22,546	21,874	22,489	21,133	21,924	24,045
1983	23,704	23,398	23,580	22,400	25,758	21,986
1984	26,813	26,098	26,608	24,292	32,390	27,578
1985	28,663	27,879	28,549	25,924	36,984	33,403
1986	29,089	28,842	31,618	27,515	39,166	35,074
1987	31,320	29,807	32,227	29,394	40,952	28,935
1988	32,545	31,970	33,085	--	--	30,264

\* Salary data adjusted to nine-month salary scales for full-time instructional faculty

TABLE 49

MEAN SALARIES OF INSTRUCTORS\*  
BY RACE AND SEX, 1976-1988

YEAR	BLACK		WHITE		OTHER	
	MEN	WOMEN	MEN	WOMEN	MEN	WOMEN
1976	\$12,467	\$11,983	\$10,910	\$12,208	--	\$10,781
1977	12,782	12,843	12,972	11,751	--	13,308
1978	14,708	13,753	14,064	13,117	16,000	13,308
1979	14,674	13,992	15,883	14,020	--	11,550
1980	12,694	15,844	16,188	16,408	--	13,705
1981	17,115	17,664	20,221	19,101	--	--
1982	17,821	18,662	17,236	19,941	--	15,860
1983	17,364	19,736	19,560	20,125	--	17,010
1984	20,541	22,659	20,252	22,063	--	18,711
1985	19,143	23,334	29,473	24,599	--	21,583
1986	19,482	23,980	--	29,262	--	22,123
1987	25,523	24,406	33,194	29,536	--	22,676
1988	27,283	27,261	--	31,818	--	--

\* Salary data adjusted to nine-month salary scales for full-time instructional faculty

SOURCE: Fall 1988 Personnel Data File

TABLE 50

SUMMARY OF MEAN SALARIES FOR FALL, 1988  
BY ACADEMIC RANK, RACE, AND SEX

ACADEMIC RANK	BLACK				WHITE				OTHER			
	MEN		WOMEN		MEN		WOMEN		MEN		WOMEN	
	N	MEAN	N	MEAN	N	MEAN	N	MEAN	N	MEAN	N	MEAN
Professor	18	\$46,647	4	\$44,261	18	\$44,186	7	\$48,157	5	\$43,652	--	--
Associate Professor	25	37,506	14	40,445	18	37,846	10	34,861	3	33,882	--	--
Assistant Professor	34	32,545	22	31,970	10	33,086	6	30,089	1	**	1	**
Instructor	5	27,283	6	27,261	1	**	3	31,818	--	--	--	--
Lecturer	3	24,570	--	--	--	--	1	**	--	--	1	**
Adjunct or Visiting	10	28,475	7	34,866	3	30,779	1	**	1	**	--	--

\* Salary data adjusted to nine-month salary scales for full-time instructional faculty.

\*\* Salary means are omitted for cells with less than three persons.



TABLE 51

FULL-TIME EPA AND SPA EMPLOYEES  
BY OCCUPATIONAL ACTIVITY CATEGORY, RACE, AND SEX  
FALL, 1988

OCCUPATIONAL ACTIVITY CATEGORY	BLACK		WHITE		OTHER		TOTAL	
	MEN	WOMEN	MEN	WOMEN	MEN	WOMEN	MEN	WOMEN
EXECUTIVE, ADMINISTRATIVE AND MANAGERIAL	32	17	6	2			38	19
Number of Persons Above with Academic Rank	13	2	2	1			15	3
Number of Persons Above with Tenure	12	2	2	1			14	3
INSTRUCTIONAL FACULTY (TENURED)	54	27	39	18	8	1	101	46
Professors	17	4	20	7	5		42	11
Associate Professors	17	12	16	7			36	19
Assistant Professors	18	9	3	3		1	21	13
Instructors	2	2		1			2	3
Lecturers								
INSTRUCTIONAL FACULTY (NOT TENURED BUT ON TRACK)	29	20	10	8	1		40	28
Professors	1	1					1	1
Associate Professors	10	4	2	3			12	7
Assistant Professors	18	15	7	4	1		26	19
Instructors			1	1			1	1
Lecturers								
INSTRUCTIONAL FACULTY (NOT ON TENURE TRACK)	13	11	4	2	1		18	13
Professors			1				1	
Associate Professors								
Assistant Professors								
Instructors	3	4		1			3	5
Lecturers	2			1			2	1
Adjunct Faculty	8	7	3		1		12	7
PROFESSIONAL	18	48	2	4	1	2	21	54
SECRETARIAL AND CLERICAL	18	188	1	1		1	19	190
TECHNICAL AND PARAPROFESSIONAL	34	26	2				36	26
SKILLED CRAFTS	31	4	1				32	4
SERVICE AND MAINTENANCE	82	50		2			82	52
TOTAL	311	391	65	37	11	4	387	432

SOURCE: Fall 1988 Personnel Data File

TABLE 52

NEW FULL-TIME EPA AND SPA EMPLOYEES  
 BY OCCUPATIONAL ACTIVITY CATEGORY, RACE, AND SEX  
 FALL, 1988

OCCUPATIONAL ACTIVITY CATEGORY	BLACK		WHITE		TOTAL		
	MEN	WOMEN	MEN	WOMEN	MEN	WOMEN	TOTAL
EXECUTIVE, ADMINISTRATIVE AND MANAGERIAL	3	4			3	4	7
Number of Persons Above with Academic Rank							
Number of Persons Above with Tenure							
INSTRUCTIONAL FACULTY (TENURED)							0
INSTRUCTIONAL FACULTY (NOT TENURED BUT ON TRACK)	2	1	1	1	3	2	5
Professors	1	1			1	1	2
Associate Professors							
Assistant Professors	1		1		2		2
Instructors				1		1	1
Lecturers							
INSTRUCTIONAL FACULTY (NOT ON TENURE TRACK)	3	4	1		4	4	8
Professors							
Associate Professors							
Assistant Professors							
Instructors							
Lecturers							
Adjunct Faculty	3	4	1		4	4	8
PROFESSIONAL		5		1		6	6
SECRETARIAL AND CLERICAL	3	25			3	25	28
TECHNICAL AND PARAPROFESSIONAL	2				2		2
SKILLED CRAFTS	5				5		5
SERVICE AND MAINTENANCE	10	3		1	10	4	14
TOTAL	28	42	2	3	30	45	75

SOURCE: OCR 14K A1B New Employees in Institutions of Higher Education, 1988

TABLE 53

RETIREMENTS, RESIGNATIONS, AND DISMISSALS  
OF FULL-TIME EPA AND SPA EMPLOYEES  
FALL, 1988

OCCUPATIONAL ACTIVITY CATEGORY	BLACK		WHITE		OTHER		TOTAL		TOTAL
	MEN	WOMEN	MEN	WOMEN	MEN	WOMEN	MEN	WOMEN	
EXECUTIVE, ADMINISTRATIVE AND MANAGERIAL	1		1	1			2	1	3
Number of Persons Above with Academic Rank	1						1	1	2
Number of Persons Above with Tenure									
INSTRUCTIONAL FACULTY (TENURED)	2	1	1	4	1		4	5	9
Professors	2		1	1			3	1	4
Associate Professors		1		3				4	4
Assistant Professors					1		1		1
Instructors									
Lecturers									
INSTRUCTIONAL FACULTY (NOT TENURED BUT ON TRACK)	3	3		3			3	6	9
Professors									
Associate Professors									
Assistant Professors	3	3		3			3	6	9
Instructors									
Lecturers									
INSTRUCTIONAL FACULTY (NOT ON TENURE TRACK)	3	1	1				4	1	5
Professors									
Associate Professors									
Assistant Professors									
Instructors			1				1		1
Lecturers	2	1					2	1	3
Adjunct Faculty	1						1		1
PROFESSIONAL	6	4					6	4	10
SECRETARIAL AND CLERICAL	1	18					1	18	19
TECHNICAL AND PARAPROFESSIONAL		6	1				1	6	7
SKILLED CRAFTS	4						4		4
SERVICE AND MAINTENANCE	5		1				6		6
TOTAL	25	33	5	8	1		31	41	72

Source: OCR 14K A3 Retirements, Resignations and Dismissals of Employees in Institutions of Higher Education, 1988

TABLE 54

PROMOTIONS OF FULL-TIME EPA AND SPA EMPLOYEES  
FALL, 1988

OCCUPATIONAL ACTIVITY CATEGORY	BLACK		WHITE		TOTAL		TOTAL
	MEN	WOMEN	MEN	WOMEN	MEN	WOMEN	
EXECUTIVE, ADMINISTRATIVE AND MANAGERIAL	4	2	2		5	2	7
Number of Persons Above with Academic Rank			1		1		1
Number of Persons Above with Tenure			1		1		1
INSTRUCTIONAL FACULTY (TENURED)	3		4	1	7	1	8
Professors	2		5		7		7
Associate Professors	1			1	1	1	2
Assistant Professors							
Instructors							
Lecturers							
INSTRUCTIONAL FACULTY (NOT TENURED BUT ON TRACK)	3	1	2		5	1	6
Professors							
Associate Professors		1	1		1	1	2
Assistant Professors	2				2		2
Instructors			1		1		1
Lecturers							
INSTRUCTIONAL FACULTY (NOT ON TENURE TRACK)	1				1		1
Professors							
Associate Professors							
Assistant Professors							
Instructors							
Lecturers							
Adjunct Faculty	1				1		1
PROFESSIONAL		1				1	1
SECRETARIAL AND CLERICAL	1	15			1	15	16
TECHNICAL AND PARAPROFESSIONAL	1	2			1	2	3
SKILLED CRAFTS	2				2		2
SERVICE AND MAINTENANCE	3				3		3
TOTAL	18	21	9	1	26	22	48

SOURCE: OCR 14K A4 Promotions of Employees In Institutions of Higher Education

TABLE 55

SUMMARY OF MEAN SALARIES FOR FALL, 1988  
 BY OCCUPATIONAL ACTIVITY CATEGORY, RACE, AND SEX

OCCUPATIONAL ACTIVITY CATEGORY	BLACK				WHITE				OTHER			
	MEN		WOMEN		MEN		WOMEN		MEN		WOMEN	
	N	MEAN	N	MEAN	N	MEAN	N	MEAN	N	MEAN	N	MEAN
Executive, Administrative, & Managerial	31	\$47,700	18	\$38,751	7	\$47,845	2	**				
Professional	18	29,944	48	26,825	2	**	4	27,338	1	**	2	**
Technical & Paraprofessional	34	20,379	29	18,233	2	**	--	--	--	--	--	--
Secretarial & Clerical	18	16,805	191	17,977	1	**	1	**	--	--	1	**
Skilled Crafts	32	20,759	4	20,307	1	**	--	--	--	--	--	--
Service & Maintenance	87	12,809	52	12,008	--	--	2	**	--	--	--	--

\*\* Salary means are omitted for cells with less than three persons.  
 Instructional faculty are excluded.

## APPENDIX

All data in FACTS are derived from analyses of and reports from the 1988 Student Data File and the 1988 Personnel Data File except as indicated below:

NCHED A-7	Student Retention Data Survey, Fall 1988
HEGIS/IPEDS 2300-2.1	Degrees and Other Formal Awards Conferred, 1988
NCHED A-10	Student Financial Aid Summary, Fall 1988
OCR B3	Financial Assistance to Students in Institutions of Higher Education, Fall 1988
NCHED A-11	Report on Sources and Uses of University Funds, Fiscal Year 1987-88
HEGIS 23400-4	Financial Statistics of Institutions of Higher Education for Fiscal Year Ending 1988
NCHED A-6	College and University Libraries, Fall 1988
NCHED A-3	Student Tuition Fees, and Charges for the Academic Year, 1988-89
	North Carolina Facilities Inventory and Utilization Reports - 1988
	Credit Hour, Report Generated by Administrative Data Processing
	Grades, Report Generated by Administrative Data Processing

TABLE 55

SUMMARY OF MEAN SALARIES FOR FALL, 1988  
 BY OCCUPATIONAL ACTIVITY CATEGORY, RACE, AND SEX

OCCUPATIONAL ACTIVITY CATEGORY	BLACK				WHITE				OTHER			
	MEN		WOMEN		MEN		WOMEN		MEN		WOMEN	
	N	MEAN	N	MEAN	N	MEAN	N	MEAN	N	MEAN	N	MEAN
Executive, Administrative, & Managerial	31	\$47,700	18	\$38,751	7	\$47,845	2	**				
Professional	18	29,944	48	26,825	2	**	4	27,338	1	**	2	**
Technical & Paraprofessional	34	20,379	29	18,233	2	**	--	--	--	--	--	--
Secretarial & Clerical	18	16,805	191	17,977	1	**	1	**	--	--	1	**
Skilled Crafts	32	20,759	4	20,307	1	**	--	--	--	--	--	--
Service & Maintenance	87	12,809	52	12,008	--	--	2	**	--	--	--	--

\*\* Salary means are omitted for cells with less than three persons.  
 Instructional faculty are excluded.

## APPENDIX

All data in FACTS are derived from analyses of and reports from the 1988 Student Data File and the 1988 Personnel Data File except as indicated below:

NCHED A-7	Student Retention Data Survey, Fall 1988
HEGIS/IPEDS 2300-2.1	Degrees and Other Formal Awards Conferred, 1988
NCHED A-10	Student Financial Aid Summary, Fall 1988
OCR B3	Financial Assistance to Students in Institutions of Higher Education, Fall 1988
NCHED A-11	Report on Sources and Uses of University Funds, Fiscal Year 1987-88
HEGIS 23400-4	Financial Statistics of Institutions of Higher Education for Fiscal Year Ending 1988
NCHED A-6	College and University Libraries, Fall 1988
NCHED A-3	Student Tuition Fees, and Charges for the Academic Year, 1988-89
	North Carolina Facilities Inventory and Utilization Reports - 1988
	Credit Hour, Report Generated by Administrative Data Processing
	Grades, Report Generated by Administrative Data Processing