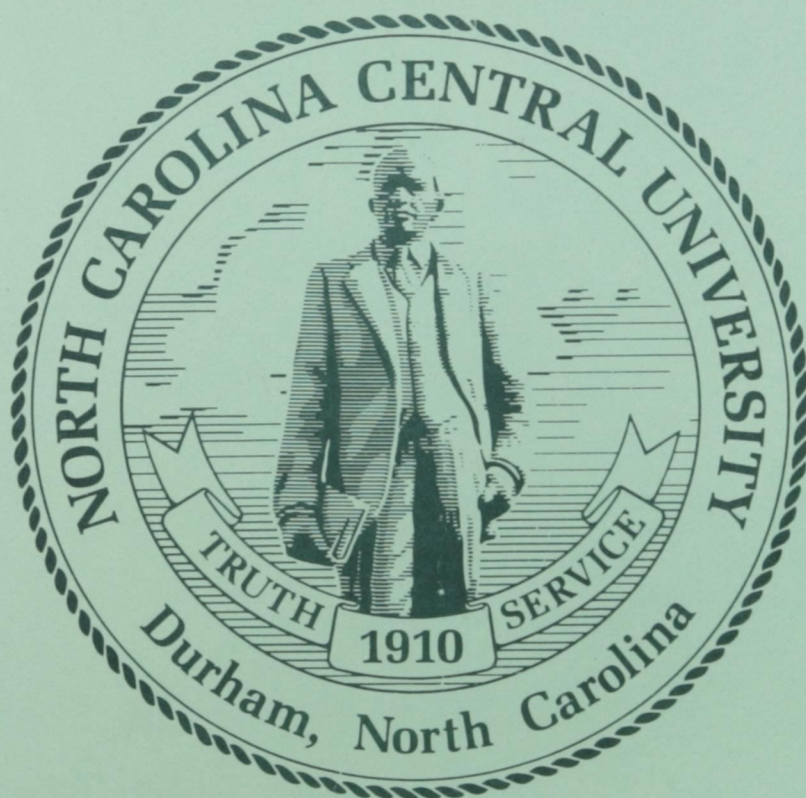


# FACTS

1995 - 1996



James E. Shepard, Founder

**NORTH CAROLINA CENTRAL UNIVERSITY**

OFFICE OF  
RESEARCH, EVALUATION AND PLANNING  
DURHAM, NORTH CAROLINA

# **F A C T S**

## **1995 - 1996**

by

**Karin A. Beckett**

**Helen L. Faucette**

**Margaret W. Harrison**

**Senior Advisors:**

**Sandra E. Davis**

**Vicki S. Fuller**

**Linda K. Pratt**

**Office of Research, Evaluation and Planning**  
**May 1996**

# TABLE OF CONTENTS

<b>Preface</b> . . . . .	v
--------------------------	---

## **Facts About the University**

Statement of Purpose . . . . .	3
Statement of Accreditation . . . . .	6
Non-Discrimination Statement of Policy . . . . .	6
Disability Services Complaints . . . . .	6
The University of North Carolina Board of Governors . . . . .	7
The University of North Carolina Officers of General Administration . . . . .	7
North Carolina Central University Board of Trustees . . . . .	8
North Carolina Central University Officers and Administrative Staff . . . . .	9

## **Facts Concerning Capital and Fiscal Operations**

### **Facilities**

Instructional . . . . .	17
Administrative/Faculty/Student Services . . . . .	17
Residential . . . . .	18
Other Residential . . . . .	18
Physical Plant Assets . . . . .	18

### **Financial Affairs**

Revenues . . . . .	19
Expenditures . . . . .	20
Library Staff, Collections, & Expenditures . . . . .	21
Student Tuition, Fees, and Charges for the 1995-96 Academic Year . . . . .	22
Student Financial Aid 1994-95 . . . . .	23

## **Facts to Support Planning**

### **Degree Programs and Program Tracks**

Academic Program Inventory . . . . .	27
--------------------------------------	----

### **Degrees Conferred**

Undergraduate by Field of Study . . . . .	31
Graduate by Field of Study . . . . .	33
Characteristics of Graduated Students . . . . .	35

<b>Credit Hours Generated</b>	
Undergraduate - Percentage Distribution . . . . .	36
Graduate - Percentage Distribution . . . . .	37
<b>Grades Assigned by School</b>	
Percentage Distribution by Course Level . . . . .	38
<b>School Profiles</b>	
College of Arts & Sciences . . . . .	39
Business . . . . .	40
Education . . . . .	41
Law . . . . .	42
Library and Information Sciences . . . . .	43
<b>Persistence</b>	
Students Enrolled, Graduated, Suspended, and Not Enrolled, One Year After Initial Entry-- Percentage Distribution . . . . .	44
A Comparison of First-Time Freshmen Enrolled at NCCU, Predominantly Black Institutions (PBI), and in the UNC System . . . . .	45
Graduation Percentages for First-Time Freshmen at NCCU, Predominantly Black Institutions (PBI), and in the UNC System . . . . .	46

## **Facts About Students**

### **Admissions**

#### **Applicants, Acceptances, and Enrollees**

Freshmen & Transfers . . . . .	51
Graduate & First-Professional . . . . .	52

#### **Geographic Origin of First-Time Freshmen**

By North Carolina County . . . . .	53
By State . . . . .	53

#### **Distribution of SAT Scores of First-Time Freshmen**

Verbal Scores . . . . .	54
Math Scores . . . . .	55
ACT Scores . . . . .	56

#### **High School Class Rank of Entering Freshmen . . . . .**

<b>Undergraduate Transfers . . . . .</b>	<b>58</b>
--	-----------

## Enrollment

### General Characteristics of Students

Classification, Full-Time/Part-Time Status, & Sex . . . . .	61
Classification, Race & Sex . . . . .	62
Distribution by Sex - Historical Comparison . . . . .	63
Distribution by Race, 1988 - 1995 . . . . .	64

### Geographic Origin

By Region, 1988 - 1995 . . . . .	65
By North Carolina County . . . . .	66
By State . . . . .	66

### Age Characteristics

Average Age, 1985 - 1995 . . . . .	67
Undergraduate Distribution . . . . .	68
Graduate & First Professional Distribution . . . . .	68

### Academic Departments and Programs

Undergraduate Enrollment by Field of Study . . . . .	69
Undergraduate Enrollment by Field of Study and Race . . . . .	71
Graduate Enrollment by Field of Study . . . . .	73
Graduate Enrollment by Field of Study and Race . . . . .	75

## Facts About Faculty and Staff

### General Characteristics of Faculty

Instructional Staffing Patterns by Academic Unit and Rank for Full and Part-Time Faculty . . . . .	79
Highest Earned Degree for Full-Time Faculty by Academic Unit . . . . .	82
Summary of Highest Earned Degree for Full-Time Faculty . . . . .	83
Race and Sex of Full-Time Faculty . . . . .	84
Summary of Race and Sex by Academic Rank . . . . .	88

### Tenure Status of Faculty

By Academic Unit . . . . .	89
By Rank and Sex . . . . .	90

### Faculty Salaries

Mean Salaries of Full-Time Instructional Faculty by Rank . . . . .	91
Mean Salaries by Rank, Race, & Sex . . . . .	92
Comparison of Faculty Salaries by Rank for NCCU and Comparable Public Universities . . . . .	93
Mean Salaries by Occupational Activity Category, Race & Sex . . . . .	94

**EPA & SPA Employees (Full-Time)**

Totals by Occupational Activity Category, Race, & Sex . . . . .	95
New Employees . . . . .	96
Retirements, Resignations, & Dismissals . . . . .	97
Promotions . . . . .	98

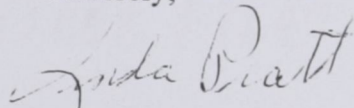
## Preface

FACTS, 1995-96 represents the 20th fact book printed as a stand-alone document by the Office of Research, Evaluation, and Planning at North Carolina Central University. The individual books and the collection as a whole represent a valuable resource for the university, and a major, sustained commitment on the part of the Office of Research, Evaluation, and Planning. The format is the same as for the last several years, though minor changes were made to improve several tables.

I want to thank the entire office staff for putting together this edition of FACTS. Ms. Helen Faucette was responsible for updating the tables, with the help of Ms. Karin Beckett. Dr. Vicki Fuller and Ms. Sandra Davis proofread FACTS, and Ms. Davis revised the graphics. Ms. Margaret Harrison arranged for printing and distribution.

We hope you find this document useful. As always, we welcome your suggestions and recommendations for improvement.

Sincerely,



Linda K. Pratt  
Assoc. Vice Chancellor for Academic Affairs  
for Research Evaluation, and Planning

*Facts About the University*



## STATEMENT OF PURPOSE

### History and Background

North Carolina Central University, a state-supported liberal arts institution, was chartered in 1909 as a private institution and opened to students on July 10, 1910. It was founded by Dr. James E. Shepard. From the beginning, when it was known as the National Religious Training School and Chautauqua, its purpose has been the development in young men and women of the character and sound academic training requisite for real service to the nation. To this end, the training of all students has been entrusted to the most capable teachers available.

The institution's early years were characterized by a wealth of enthusiasm and high endeavor, but not of money. Private donations and student fees constituted the total financial support of the school, and the heavy burden of collecting funds rested on the President.

In 1915, the school was sold and reorganized, then becoming the National Training School. During this period of its history, Mrs. Russell Sage of New York was a generous benefactor of the school.

In 1923, the General Assembly of North Carolina appropriated funds for the purchase and maintenance of the school; thus, in that year it became a publicly-supported institution and was renamed Durham State Normal School. Two years later, the General Assembly converted it into the North Carolina College for Negroes, dedicating it to the offering of liberal arts education and the preparation of teachers and principals of secondary schools.

At its 1927 session, the General Assembly began a program of expansion of the college plant to conform to the needs of an enlarged academic program. The interest of the honorable Angus W. McLean, then Governor of North Carolina, and his belief in the institution

aided greatly in the promotion of this program. State appropriations were supplemented by a generous gift from B. N. Duke and by contributions from citizens of Durham in 1929. The 1930's afforded federal grants and State appropriations for a new program of physical expansion and improvement of educational facilities; this program continued until the beginning of World War II.

The College was accredited by the Southern Association of Colleges and Secondary Schools as an "A" class institution in 1937 and was admitted to membership in this association in 1957.

The General Assembly of 1939 authorized the establishment of graduate work in liberal arts and the professions. Pursuant thereto, graduate courses in the Arts and Sciences were first offered in that same year; the School of Law began operation in 1940, and the School of Library Science was established in 1941.

In 1947, the General Assembly changed the name of the institution to North Carolina College at Durham.

On October 6, 1947, Dr. Shepard, the founder and President of the college, died. The Board of Trustees appointed an interim committee consisting of Dr. Albert E. Manley, Dean of the College of Arts and Sciences; Miss Ruth G. Rush, Dean of Women; and Dr. Albert L. Turner, Dean of the School of Law, to administer the affairs of the institution until the election of the second president.

On January 20, 1948, Dr. Alfonso Elder was elected President of the institution. At the time of his election, Dr. Elder was serving as head of the Graduate Department of Education and had formerly been Dean of the College of Arts and Sciences. Dr. Elder retired September 1, 1963.

Dr. Samuel P. Massie was elected as the third President of the college on August 9, 1963. Dr.

Massie came to the institution from Washington, D.C., where he was Associate Program Director for Undergraduate Science Education of The National Science Foundation and Professor and Chairman of the Department of Pharmaceutical Chemistry at Howard University. He resigned on February 1, 1966.

The Board of Trustees appointed an interim committee consisting of Mr. William Jones, Business Manager; Dr. Helen G. Edmonds, Graduate Dean; and Dr. William H. Brown, Professor of Education, to administer the affairs of the institution until the fourth president took office.

On July 20, 1966, Dr. Albert N. Whiting was named the fourth president of the institution. He came to North Carolina College from Baltimore, Maryland, where he had been Dean of the Faculty of Morgan State College. Dr. Whiting served as President and Chancellor from July 1, 1967, until his retirement on June 30, 1983.

In 1969, the General Assembly changed the name of the institution to North Carolina Central University. On July 1, 1972, North Carolina Central University became a constituent institution of The University of North Carolina.

On July 1, 1983, Dr. LeRoy T. Walker became Interim Chancellor of the University. He had served the institution as Chairman of the Department of Physical Education and Recreation, Head Track Coach, and Vice Chancellor for University Relations. At their February 1986 meeting, the University of North Carolina Board of Governors, at the request of the University's Board of Trustees, decreed that Dr. Walker was Chancellor of the University rather than Interim Chancellor and made that action retroactive to the beginning of his term.

Dr. Tyrone R. Richmond, formerly Dean of the School of Business, succeeded Dr. Walker as

Chancellor on July 1, 1986. Prior to his arrival at North Carolina Central University, Dr. Richmond was Associate Dean and Professor at the School of Business and Public Administration at Howard University.

Dr. Richmond resigned as Chancellor to return to the classroom and was succeeded on January 1, 1992 by Dr. Donna J. Benson as Interim Chancellor.

On July 31, 1992, Atty. Julius L. Chambers was appointed Chancellor of North Carolina Central University by the Board of Governors. He assumed that office on January 1, 1993. Atty. Chambers was formerly Director-Counsel for the NAACP Legal Defense and Educational Fund, Inc.

### **Mission**

The following mission statement was formally adopted by the Board of Trustees of North Carolina Central University on February 23, 1994.

North Carolina Central University is a comprehensive university offering programs at the undergraduate and graduate levels. It is the nation's first public liberal arts institution founded for African Americans. The university maintains a strong liberal arts tradition and a commitment to academic excellence in a diverse educational and cultural environment. It seeks to encourage intellectual curiosity and to enhance the academic and professional skills of its students and faculty.

The mission of the university is to prepare students academically and professionally and to promote consciousness of social responsibility and dedication to the advancement of the general welfare of the people of North Carolina, the United States, and the world. The University will serve its traditional clientele of African American students; it will also expand

its commitment to meet the educational needs of a student body that is diverse in race and other socioeconomic attributes.

Teaching is the primary focus of the University. As a part of that focus, the University encourages its faculty to pursue intellectual development and rewards effective teaching. The University recognizes, however, the mutually reinforcing impact of scholarship and service on effective teaching and learning. North Carolina Central University, therefore, encourages and expects faculty and students to engage in scholarly, creative, and service activities which benefit the global community.

### **Institutional Goals**

1. To improve enrollment management procedures including identifying prospective students, developing an effective marketing and recruiting strategy, admitting students with good chances of academic success, and retaining those students to graduation.
2. To further develop and maintain a climate where there is a University-wide commitment to the general welfare of the institution, open and candid communication, open and amicable airing of differences, and mutual trust and respect among students, faculty, staff, and administrators.
3. To encourage, support, and reward outstanding performance in teaching, research, service, and creative activities.
4. To further strengthen administrative support for coordination of research activities through workshops, seminars, and consultation with individuals and departments.
5. To support the development and accreditation of professional schools and

programs.

6. To enhance and develop programs which will attract mature and non-traditional students to North Carolina Central University.
7. To further promote an image of a dynamic, innovative institution with programs that are responsive to the needs of all the people in its service area.

### **Educational Goals**

1. To ensure that undergraduate students gain a knowledge of their cultural heritage as a framework for better understanding the diversity inherent in the existing social order.
2. To ensure that undergraduate students acquire a sense of history, an understanding of science, an appreciation of the fine and performing arts, and an understanding and appreciation of other cultures.
3. To encourage among all students an attitude about learning and intellectual work which includes familiarity with research and problem solving methods, the ability to employ critical thinking skills, the ability to synthesize knowledge from many sources, the enhancement of communication skills, the capacity for self-directed learning, and a commitment to life-long learning.
4. To ensure that all students acquire both general and specialized knowledge, thus contributing to high intellectual standards on campus and preparing students for advancement after graduation.

## STATEMENT OF ACCREDITATION

North Carolina Central University is accredited by the Commission on Colleges of the Southern Association of College and Schools to award bachelor's degrees and master's degrees.

The School of Law is accredited by the American Bar Association. The program in Library Science is accredited by the American Library Association and the program in Nursing by the Accrediting Services, National League for Nursing, Inc. Programs at the bachelor's and master's levels in early childhood education, elementary teaching, secondary teaching, and K-12 teaching, and at the master's level in educational communication and information technology, school principalship, supervision/curriculum development, and guidance counseling are accredited by the National Council for Accreditation of Teacher Education (NCATE). All of these specialized accrediting bodies are recognized by the Council on Postsecondary Accreditation and the U.S. Department of Education.

Teacher Education Programs are approved by the North Carolina State Department of Public Instruction. The North Carolina Board of Nursing approves the Nursing Program. The School of Law is approved by the North Carolina State Bar Council.

## NON-DISCRIMINATION STATEMENT OF POLICY

North Carolina Central University is committed to the principles of affirmative action and non-discrimination. The university welcomes diversity in its student body, faculty, staff and administration. It admits, hires, evaluates, promotes and rewards on the basis of relevant performance criteria without regard to race, gender, age, disability, national origin, ethnicity, veteran's status, religion, sexual orientation or lifestyle. It actively promotes respect of each individual.

In addition to those individuals already formally affiliated with the university, these affirmative action, non-discrimination principles are applied equally to all applicants for admission to any of the university's academic programs and to all applicants for employment by the university in any of its enterprises. The university maintains an Affirmative Action/Non-discrimination Committee and a system for addressing concerns on these matters.

## DISABILITY SERVICES COMPLAINTS

Grievances in regard to rights under Section 504 should be filed with the Director of Student Support Services. This non-discrimination policy covers admission and activities, including but not limited to academic admissions, financial aid, educational services, and employment. Anyone desiring information concerning these provisions should contact:

Director of Student Support Services  
Section 504 Coordinator  
North Carolina Central University  
Telephone (919) 560-6325

THE UNIVERSITY OF NORTH CAROLINA  
BOARD OF GOVERNORS

D. Samuel Neill	Chairperson
Joseph E. Thomas	Vice-Chairperson
Benjamin S. Ruffin	Secretary

Class of 1997

G. Irvin Aldridge	Manteo
Mark L. Bibbs	Chapel Hill
Lois G. Britt	Mount Olive
John F. A. V. Cecil	Biltmore
Derick S. Close	Charlotte
Bert Collins	Durham
John A. Garwood	North Wilkesboro
Wallace N. Hyde	Raleigh
Jack P. Jordan	Mount Gilead
Helen R. Marvin	Gastonia
D. Samuel Neill	Hendersonville
Ellen S. Newbold	Rose Hill
Maxine H. O'Kelley	Burlington
D. Wayne Peterson	Westwood, KS
H. D. Reaves	Fayetteville
Harold H. Webb	Raleigh

Class of 1999

F. Edward Broadwell, Jr.	Asheville
Robert J. Brown	High Point
William T. Brown	Fayetteville
C. Clifford Cameron	Charlotte
Orville D. Coward, Sr.	Sylva
John C. Fennebresque	Charlotte
Larnie G. Horton, Sr.	Raleigh
C. Ralph Kinsey, Jr.	Charlotte
W. Kenneth Morgan, Sr.	Jacksonville
Cary C. Owen	Asheville
Barbara S. Perry	Kinston
Earl N. Phillips, Jr.	High Point
Marshall A. Rauch	Gastonia
Paul J. Rizzo	Chapel Hill
Benjamin S. Ruffin	Winston-Salem
Joseph E. Thomas	New Bern

Member Emeriti

James E. Holshouser, Jr.	Southern Pines
Samuel H. Poole	Raleigh

Ex-Officio

Keith Bryant	Greensboro
--------------	------------

THE UNIVERSITY OF NORTH CAROLINA  
OFFICERS OF GENERAL ADMINISTRATION

1995-96

C. D. Spangler, Jr.	President
Tracey C. Avinger	Administrative Assistant to the President
Richard H. Robinson, Jr.	Assistant to the President for Legal Affairs
Elizabeth C. Bunting David N. Edwards, Jr.	Special Assistants to the President
Rosalind Fuse-Hall	Secretary of the University
L. B. Corgnati, Jr.	Assistant Secretary of the University
Frances H. Hope	Assistant Secretary of the Board of Governors

Academic Affairs Division

William F. Little	Vice President for Academic Affairs and Senior Vice President
Judith Pulley	Associate Vice Presidents for Academic Affairs
John H. Harrison, IV Donna Benson	
Myra Cain	Acting Associate Vice President for Academic Affairs
Louis T. Parker, Jr.	Assistant Vice President for Academic Affairs and Director, UNC Educational Computing Service
Eugene McDowell	Director, Asheville Graduate Center

Communications Division

Wyndham Robertson	Vice President for Communications
Joni B. Worthington	Assistant Vice President for Communications
Tom Howe	Director and General Manager, N. C. Center for Public Television

Lee Culpepper Director of Legal Affairs, UNC  
Center for Public Television

Finance Division

William O. McCoy Vice President for Finance

Kennis R. Grogan Associate Vice Presidents  
Jeffrey R. Davies for Finance  
James O. Smith

James C. Baulding Assistant Vice President  
for Finance

Kitty McCollum Assistant Vice President for  
Finance and University Benefits Officer

Henry A. Holmes Assistant Vice President for  
Finance and University Property Officer

Kenneth D. Craig Service Officer

Planning Division

Roy Carroll Vice President for Planning

A. Troy Barksdale Associate Vice Presidents  
Gary T. Barnes for Planning

Robert F. Hill, Jr. Director of Information Systems

Linda Balfour Director of Data Collection  
and Reporting

Billy Helton Assistant Director of  
Data Collection and Reporting

Public Affairs Division

David G. Martin Vice President for Public Affairs

J. Earl Danieley Assistant to the President

Research Division

Jasper D. Memory Vice President for Research

Charles L. Wheeler Associate Vice President  
for Research and Director, N. C. State  
Commission on Higher Education Facilities

Richard Linton Associate Vice President  
for Research

Student Services and Special Programs  
Division

Nathan F. Simms, Jr. Vice President for  
Student Services & Special Programs

George A. Antonelli Associate Vice Presidents  
Cynthia P. Bonner for Student Services &  
Special Programs

Bernell C. Dickinson Executive Director  
N. C. State Approving Agency

Stan C. Broadway Executive Director  
N. C. State Education  
Assistance Authority

**NORTH CAROLINA CENTRAL UNIVERSITY  
BOARD OF TRUSTEES**

E. Lavonia Allison (Secretary) Durham  
Franklin R. Anderson Durham  
Jeremy Ardrey (Ex-Officio Member) Durham  
David E. Benevides Research Triangle Park  
Brenda B. Broadie Durham  
Dudley E. Flood Raleigh  
Ralph K. Frasier Columbus, OH  
Franklin E. McCain Charlotte  
Terry Sanford, Jr. Durham  
William A. Shore Research Triangle Park  
William G. Smith (Vice Chair) Durham  
R. Edward Stewart Durham  
Peggy M. Ward (Chair) Charlotte

**NORTH CAROLINA CENTRAL UNIVERSITY  
OFFICERS AND ADMINISTRATIVE STAFF  
1995-1996**

**OFFICE OF THE CHANCELLOR**

Julius L. Chambers, LL.M.	Chancellor
Margot M. Flood, B.A.	Administrative Assistant II
James E. Tyson, B.S.	Executive Assistant to the Chancellor
Marilyn M. Nance, J.D.	Internal Auditor
George H. Walls, M.A.	Special Assistant to the Chancellor
William E. Lide, Ph.D.	Athletic Director
McDonald Vick, B.A.	Chief of Security
Kerry O. Randel, B.S., M.A.	Director of Physical Plant/Facilities
Edward O. King, B.S.E.E., M.S.E.E., Ph.D.	Building Systems Engineer
Lebbie E. Bumpass	Building Maintenance Supervisor
Arthur Cheetham-Smart, B.S.	Building Systems Engineer
Richard Goward	Housekeeping Supervisor
Kathy M. Wolfe	Grounds Supervisor
Robert P. Smith, B.S.	Business Officer
George McGhee	Central Heating Plant Supervisor
Lula G. Thorpe, B.A.	Special Assistant to the Chancellor
Shirley H. Hamilton, M.B.A.	Assistant to the Chancellor
Kaye R. Webb, J.D.	Legal Assistant
Melvin L. Riggs, M.S.	Title III Coordinator
Natalie C. McIver, B.S.	Director of Public Relations
Vacant	Assistant Vice Chancellor for Scholarships and Student Aid
Vernestine Thorpe, B.S.	Assistant Scholarships and Student Aid Manager
Lillian B. Downey, M.A.	Assistant Director for Scholarships and Student Aid
Audrey L. Crawford-Turner, J.D.	EEO/Affirmative Action Officer

**ACADEMIC AFFAIRS**

Patsy B. Perry, Ph.D.	Interim Provost, Vice Chancellor
-----------------------	----------------------------------

SCHOOL OF GRADUATE STUDIES

Rudolph S. Jackson, Ph.D.	Dean
---------------------------	------

COLLEGE OF ARTS AND SCIENCES

Bernice D. Johnson, Ph.D.	Interim Dean
Lana T. Henderson, Ph.D.	Associate Dean
Mattie E. Moss, Ph.D.	Associate Dean

Academic Department Chairs

Melvin Carver, Ph.D.	Art
Charles R. George, Ph.D.	Biology
John A. Myers, Ph.D.	Chemistry
George P. Wilson, Ph.D.	Criminal Justice
Johnny B. Alston, III, Ph.D.	Dramatic Arts
Arlene Clift-Pellow, Ph.D.	English

Woodrow W. Nichols, Jr., Ph.D.  
Theodore R. Parrish, D.P.H.  
Sylvia M. Jacobs, Ph.D.  
Beverly A. Bryant, Ed.D.  
William T. Fletcher, Ph.D.  
Thomas N. Hammond, Ph.D.  
Celia A. Davidson, Ph.D.  
W. Kaye McDonald, Ph.D.  
Vacant  
Virginia Politino, Ph. D.  
Angelaurelio F. Soldi, Ph.D.  
Joseph Aicher, Ph.D.  
Les Brinson, Ph.D.  
George H. Conklin, Ph.D.

Geography  
Health Education  
History  
Human Sciences  
Mathematics/Computer Sciences  
Modern Foreign Languages  
(Acting) Music  
Nursing  
Philosophy  
Physical Education and Recreation  
Physics  
Political Science  
Psychology  
Sociology

#### SCHOOL OF BUSINESS

Sundar W. Fleming, Ph.D.  
Raphael N. Thompson, M.B.A.  
Youngil Cho, Ph.D.  
John V. Turner, M.Ed.

Dean  
Associate Dean for Graduate Programs & Corporate Relations  
Associate Dean for Undergraduate Studies  
Associate Dean for Student Affairs

#### SCHOOL OF EDUCATION

Sammie C. Parrish, Ph.D.  
Carolyn R. Whitted, Ph.D.  
Charles L. Alcorn, Ph.D.

Dean  
Associate Dean  
Associate Dean

#### SCHOOL OF LAW

Percy L. Luney, J.D.  
Charles E. Smith, L.L.M.  
Mark W. Morris, L.L.M.  
Adrienne L. Meddock, J.D.  
Sandra J. Polin, J.D.  
Monica K. Kalo, J.D.  
Lisa M. Crutchfield, J.D.  
Tracy H. Barley, J.D.

Dean  
Associate Dean  
Associate Dean  
(Acting) Assistant Dean for Evening Program  
Assistant Dean for Day Program  
Assistant Dean for Development  
Director of Placement  
Director of Recruitment

#### SCHOOL OF LIBRARY AND INFORMATION SCIENCES

Benjamin F. Speller, Jr., Ph.D.  
Duane Bogenschneider, M.L.I.S.  
April Bohannon, M.L.I.S.

Dean  
Enrollment Manager  
Information Resources Manager

#### UNIVERSITY COLLEGE

Eugene A. Eaves, Ph.D.  
Vacant

Interim Dean  
Assistant to Dean

#### RESEARCH, EVALUATION AND PLANNING

Linda K. Pratt, Ph.D.  
Vicki S. Fuller, Ed.D.  
Sandra E. Davis, M.B.A.  
Beverly W. Jones, Ph.D.  
Robert D. Montgomery, M.A.

Associate Vice Chancellor  
Associate Director  
Director, Institutional Studies  
Director, Institute for the Study of Minority Issues  
Director, Academic Computing



Duncan J. Floyd, B.S.  
Roy R. Cappadona, B.S.  
Paul Harrison, B.S.  
Donald R. Nolen, M.P.H.

Director of Administrative Data Processing  
Associate Director of Operations and TeleCommunications  
Operations Manager  
Application Development Manager

ACADEMIC SERVICES

LaFayette W. Lipscomb, Ph.D.  
Nancy R. Rowland, M.A.  
Mildred L. Mundine, M.A.  
Alice J. Mayer, J.D.  
Vacant  
Barbara S. Moore, B.A.  
Leon B. Hardy, Ph.D.  
Sherry M. Eaton, Ph.D.

Associate Vice Chancellor  
Director of Admissions  
University Registrar  
Associate Registrar  
Assistant Registrar  
Director, Health Careers  
Director, Honors Program  
Director, University Testing

ACADEMIC ADVISING

Mattie E. Moss, Ph.D.  
Sarah Bell-Lucas, M.A.

Director  
Academic Advising Coordinator

ART MUSEUM

Norman E. Pendergraft, M.A.C.T.

Director

LEARNING RESOURCES

Marvin E. Duncan, Ph.D.  
Lawrence S. Lovette, M.A.

Director  
Associate Director

LIBRARY SERVICES

Floyd C. Hardy, Ph.D.

Director

SPONSORED RESEARCH AND PROGRAMS

Vacant

Director

**DEVELOPMENT**

David W. Hoard, B.A.  
Vacant  
William E. Evans, B.S.  
David H. Witherspoon, B.A.  
E. Theresa Taylor, B.A.  
Ellis H. Smith, M.A.  
Yvonne Fisher, B.S.  
Gloria A. Haynes, B.S.

Vice Chancellor  
Associate Vice Chancellor for Development  
Director of University and Community Relations  
Director of News Bureau  
Director of Development  
Director of Alumni Affairs  
Foundation Accountant  
Director of Corporation and Foundation Relations

**FINANCIAL AFFAIRS**

Ruby Pittman, M.B.A.  
Lola T. McKnight, B.S.  
Mozell Robinson, B.S., C.P.M.  
Lula M. Bullock, B.S.  
Christopher L. Hinton, M.B.A., C.P.A.  
Janette D. Street, B.S.

Vice Chancellor  
Assistant to the Vice Chancellor  
Director of Administrative Services  
Budget Officer  
Associate Vice Chancellor for Financial Affairs  
Administrative Assistant for Food Services

Wayne Jones, B.S.  
 Reginald K. Smith, M.P.A.  
 Joseph D. Alston, B.S.  
 Chester Ray, Jr.  
 Arshad Y. Ali, B.A.  
 Joyce Page, M.A.  
 Shirley B. Ragland, M.A.  
 Godfrey Herndon, J.D.  
 Mavis B. Lewis, B.S.  
 Ronald D. Reaves, B.S.  
 Mack Lee White, B.A.  
 Vanessa Gregory, A.S.  
 Carolyn J. Thomas, M.A.  
 Charles R. Warren, M.A.  
 Francina Y. Tate, B.S.  
 Deborah Fenner, M.B.A.  
 Nathaniel Hall, B.S.  
 Ralph Fennell, B.S.C., C.P.M.  
 William K. James, M.B.A., C.P.A.  
 Norma P. Smith, B.A.  
 Mary Thompson, B.S.  
 Carlos Rivera, B.B.A.  
 Linda Belton, B.S.  
 Lisa B. Mitchell, B.S.  
 Joyce Smith, B.A.  
 Jacqueline Scurlock

System Accountant  
 Ticket Office/Vending Manager  
 Book Store Manager  
 Mail Center Supervisor  
 Central Stores/Receiving Manager  
 Director of Purchasing  
 Purchasing Manager  
 Purchasing Agent/Contracts Specialist  
 Director of Human Resources  
 Position and Staffing Manager  
 Position and Classification Specialist  
 Employee Services Officer  
 Benefits Officer  
 Employment Officer  
 Staff Development Officer  
 Comptroller  
 Accounting Manager  
 Director of Cash Management  
 Reporting Manager  
 Director of Disbursements  
 Accounts Payable Supervisor  
 Accountant I  
 Endowment Accountant  
 Federal Loans Officer  
 Contracts and Grants Officer  
 Student Billings/Receivable Supervisor

### STUDENT AFFAIRS

Arthur G. Affleck, J.D.  
 Roger G. Bryant, Ed.D.  
 Tyrone Bledsoe, Ph.D.  
 Evelyn C. Deck, M.A.  
 Vacant  
 James B. Fuller, Ed.D.  
 Phyllis F. Shumate, M.S.  
 Glen R. Martin, Ed.D.  
 Peggy Alexander, M.A.  
 Dietrich A. Morrison, B.A.  
 Walter Mack  
 Thurman Prescott, Jr., B.A.  
 Lillian R. Horne, M.D.

Vice Chancellor  
 Associate Vice Chancellor and Dean of Students  
 Assistant Vice Chancellor  
 Assistant Dean of Students  
 Assistant Dean of Students  
 Director of Student Support Services  
 (Acting) Director of Residence Operations  
 Associate Vice Chancellor and Director of Counseling Center  
 Director of Career Counseling and Placement Center  
 Student Activities Officer  
 Interim Director of Campus Religious Life  
 Director of Student Union  
 Director of Student Health Services

**FACULTY SENATE**

Kenneth L. Chambers, Ph.D.  
James M. Schooler, Ph.D  
Isabel Jones, Ph.D.  
Jesse Mann, Ed.D.

Chair  
Vice Chair  
Secretary  
Parliamentarian

*Facts Concerning Capital  
and Fiscal Operations*

# Facilities

## INSTRUCTIONAL

Year Completed	Name	Assignable		Class	Class	Other
		Sq. Ft.	Offices	Rooms	Labs	Labs
1937	Duke Auditorium	10,566	2		1	
1937	Robinson Science	16,536	22	10	1	11
1950	Edmonds Classroom	14,657	44	11		4
1950	McDougald Gym	35,934	8	4		
1950	Fine Arts	14,736	7	2	2	10
1950	Shepard Library	39,303	25	4		
1952	Dent Human Sciences	13,070	12	6		7
1953	Home Econ. Practice House	2,870				
1955	Taylor Education	25,269	48	13	2	1
1956	Lee Biology	20,834	14	5		37
1956	Willis Commerce	25,105	57	8		5
1957	Biology Greenhouse	440				
1969	Bowling Alley	5,358				
1969	1910 Fayetteville St.	454				
1969	Hubbard Chemistry	19,082	10	4	2	17
1976	Farrison-Newton Communications	51,898	67	28		8
1976	Edwards Music	14,984	19	4		15
1976	Shepard Library Addition	37,004	3			
1980	Turner Law School	50,738	44	7	1	
1982	Miller-Morgan Health Science	28,784	26	12	2	6
1984	Whiting Criminal Justice	17,837	23	12	3	
1985	Walker P. E. Complex	102,013	30	11	1	4
<b>Total</b>		<b>547,472</b>	<b>461</b>	<b>141</b>	<b>15</b>	<b>125</b>

## ADMINISTRATIVE/FACULTY/STUDENT SERVICES

Year Completed	Name	Assignable Square Ft.	Offices	Year		Assignable Square Ft.	Offices
				Comple	Name		
1925	Old Chancellor Res.	2,487	6	1963	Black History Ctr. 521 Nelson	1,134	3
1929	Hoey Administration	19,643	85	1963	Honors Court 525 Nelson St.	813	4
1930	Alexander-Dunn	12,856	34	1965	Storage Building	11,694	1
1937	Cottage 1 (Security)	2,028	9	1966	Pearson Cafeteria	21,686	
1937	Jordan House	1,747	8	1968	Elder Student Union	26,543	17
1937	Human Resources Building	1,557	5	1977	Physical Plant	7,996	10
1937	517 George St.	1,730	7	1983	Cafeteria Annex	2,824	4
1939	Old Senior (women)	8,230	31	1991	Hayti Heritage Center	2,734	3
1945	Quick Copy Center	3,625	10		(Afro-American Resources)		
1950	Old Health Building	15,253	22	1937	William Jones	12,445	17
1956	McDougald Admissions	3,410	8	1940	Womens Gym	13,421	4
				<b>TOTAL</b>		<b>173,856</b>	<b>288</b>

# Facilities

## RESIDENTIAL

Year Completed	Name	Square Ft.	Occupancy	Offices
<b>Residence Halls</b>				
1930	Shepard (coed-honors)	28,733	158	2
1937	McLean (women)	16,649	79	2
1937	Rush (women)	17,187	88	1
1951	Chidley (men)	77,282	653	7
1951	George St. Apts. (graduate)	10,750	28	
1960	Latham (women)	28,453	200	1
1966	Baynes (women)	52,314	408	1
1968	Eagleson (women)	55,517	408	1
<b>Total</b>		<b>286,885</b>	<b>2022</b>	<b>15</b>

## OTHER RESIDENTIAL

1960	707 Burlington Ave.	850		
1960	709 Burlington Ave.	850		
1963	523 Nelson St.	850		
1969	1908 Fayetteville St.	1,649		
1982	Chancellor's Residence	6,800		
<b>Total</b>		<b>10,999</b>		

**Total Square Footage for all Facilities** 1,019,212

SOURCE: North Carolina Facilities Inventory and Space Utilization Report, Fall 1995

## Physical Plant Assets

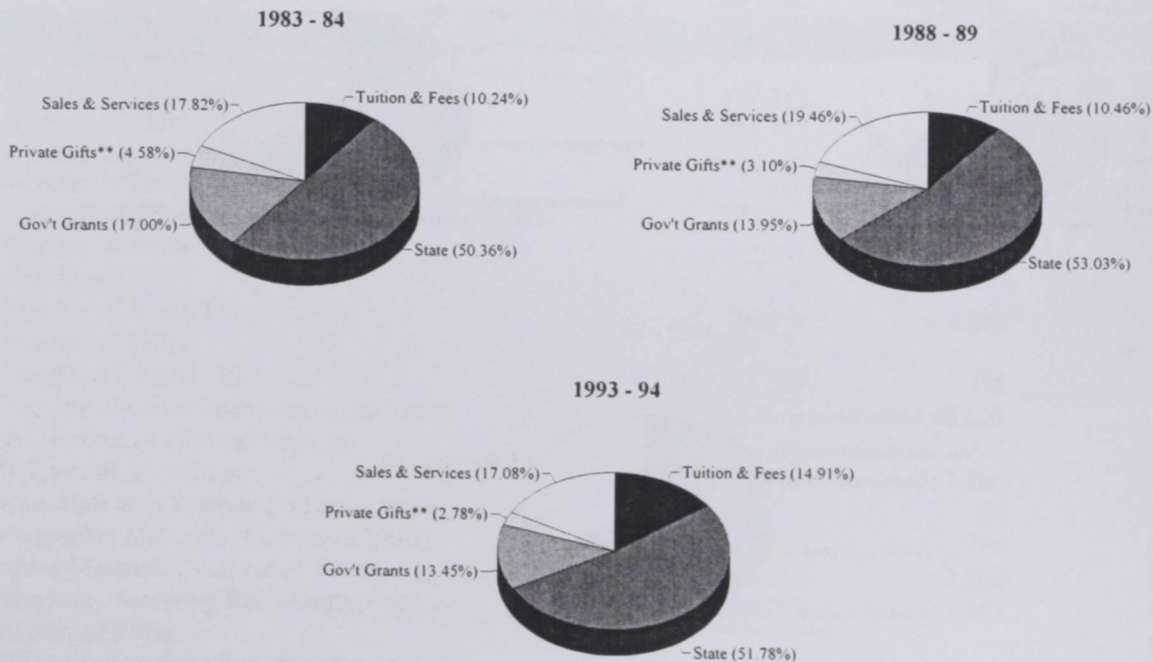
DESCRIPTION OF ASSETS	1984-85	1989-90	1994-95
<b>LAND:</b>			
Book Value at Beginning of Year	\$980,091	\$980,091	\$980,091
Additions During Year			66,970
Deductions During Year			
Book Value at End of Year	980,091	980,091	1,047,061
<b>BUILDINGS:</b>			
Book Value at Beginning of Year	35,654,966	51,131,308	55,796,465
Additions During Year	4,249,167	34,710	832,195
Deductions During Year			157,153
Book Value at End of Year	39,904,133	51,166,018	56,471,507
<b>EQUIPMENT:</b>			
Book Value at Beginning of Year	16,755,100	9,554,693	12,897,715
Additions During Year	864,512	1,946,465	1,918,290
Deductions During Year	4,824	160,034	
Book Value at End of Year	17,614,788	11,341,124	14,816,005
<b>TOTAL (BOOK VALUE)</b>	<b>58,499,012</b>	<b>63,487,233</b>	<b>72,334,573</b>

SOURCE: IPEDS F-1 Current Funds Expenditures and Transfers Reports

# Financial Affairs

## Revenues\*

CURRENT FUNDS REVENUES	1984-85	1989-90	1994-95
Tuition & Fees	\$3,611,418	\$6,150,751	\$9,522,341
State	19,726,941	24,844,553	32,714,193
Government Grants & Contracts:			
Federal, Unrestricted	215,163	308,688	231,531
Federal, Restricted	5,385,618	6,067,377	7,676,024
State, Unrestricted	9,606	(4,982)	18,020
State, Restricted	337,756	252,093	324,586
Local, Unrestricted	*	*	*
Local, Restricted	*	*	*
Private Gifts, Grants & Contracts:			
Unrestricted	143,289	199,608	148,485
Restricted	938,368	850,800	766,630
Endowment Income:			
Unrestricted	*	53,902	26,067
Restricted	72,847	9,915	*
Sales & Services of Educational Activities	*	*	400,642
Sales & Services of Auxiliary Enterprises	6,237,240	9,248,057	10,077,380
Other Sources	447,072	361,028	766,557
Independent Operations			
<b>TOTAL CURRENT FUNDS REVENUES</b>	<b>\$37,125,318</b>	<b>\$48,341,790</b>	<b>\$62,672,456</b>



\* The focus of this document varies from year to year; therefore, data for particular categories are sometimes not reported.

\*\* Includes Endowment Income and Other Sources

SOURCE: IPEDS F-1 Current Funds Expenditures and Transfers Reports

# Financial Affairs

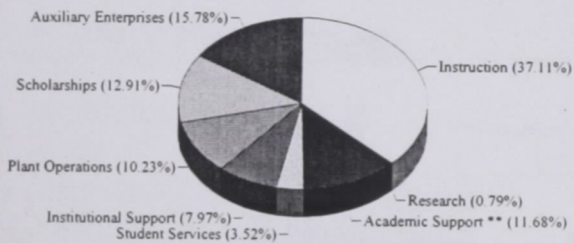
## Expenditures\*

### CURRENT FUNDS EXPENDITURES

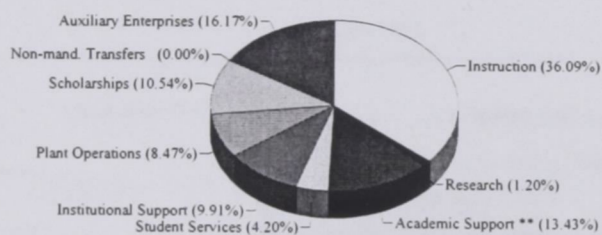
	1984-85	1989-90	1994-95
Instruction	\$13,555,054	\$16,258,522	\$23,795,436
Research	336,525	670,691	1,168,233
Public Service	226,541	309,758	581,856
Academic Support (Including Libraries)	3,696,440	6,030,801	7,180,150
Student Services	1,390,905	2,441,429	2,348,020
Institutional Support	3,726,825	5,263,258	7,502,046
Operation & Maintenance of Plant	3,630,976	3,852,133	4,906,864
Scholarships & Fellowships			
Awards from Unrestricted Funds	387,332	337,540	1,269,006
Awards from Restricted Funds	3,949,811	4,635,823	4,866,341
Non-Mandatory Transfers		320	
Unrestricted			
Restricted			
Auxiliary Enterprises (Including Mandatory Transfers)	6,087,467	7,054,614	11,196,521
Independent Operations (Including Mandatory Transfers)			

**TOTAL CURRENT FUNDS EXPENDITURES AND TRANSFERS**    \$36,987,876    \$46,854,889    \$64,814,473

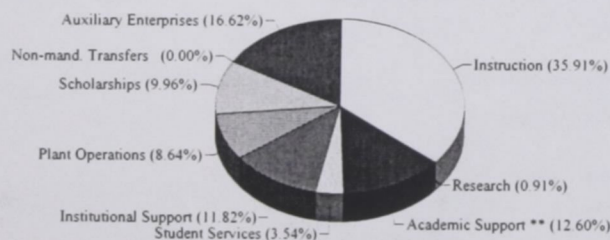
1983 - 84



1988 - 89



1993 - 94



\* The focus of this document varies from year to year; therefore, data for particular categories are sometimes not reported.

\*\* Includes Public Service



# Financial Affairs

## Library Staff, Collections, and Expenditures

	1985	1990	1995
<b>LIBRARY STAFF FTE</b>			
Librarians and Other Professional Staff		25	28
All Other Paid Staff		22	24
Student Assistants From All Funding Sources		6.3	7.0
Total FTE Staff		53.3	58.7
<b>OPERATING EXPENDITURES</b>			
Salaries and Wages	802,953	\$759,263	\$1,004,687
All Other Paid Staff	190,873	440,760	472,271
Student Assistants	8,118	42,921	57,873
Collections			
Print Materials	373,274	184,172	338,321
Current Serial Subscriptions	203,546	532,035	858,097
Microforms	58,450	29,046	230,688
Machine Readable Materials		2,975	
Audiovisual Materials	6,456	7,663	29,078
Computer Files and Research Services			59,018
Other	48,829		
Preservation	13,028	4,313	16,183
Equipment			
Furniture and Equipment		10,171	37,915
Computer Hardware		8,445	175,624
Bibliographic Utilities, Networks and Consortia			63,497
Other Operating Expenditures	97,828	72,127	2,059
Total Operating Expenditures	\$1,803,355	\$2,093,891	\$3,345,311
<b>COLLECTIONS</b>			
Book Serials and Government Documents			
Number of Volumes	570,313	584,856	623,878
Number of Titles	418,123	433,458	461,513
Number of Government Document Titles	127,968	112,127	133,843
Number of Units			144,021
Current Serial Subscriptions			4,811
Number of Titles	2,301	3,930	4,614
Microforms			
Number of Book Titles	16,379	4,889	536,163
Number of Units			974,385
Number of Serial Titles	289	435	
Number of Government Document Titles		68,623	
Total Number of Physical Units of all Types of Microforms	375,686	553,800	
Manuscripts and Archives (in Linear Feet)		80	80
Cartographic Materials (Number of Units)		2,786	3,561
Graphic Materials (Number of Units)		3,766	2,968
Audio Mat. /Sounding Rec. (Number of Units)	26,257	1,662	1,261
Number of Titles			1,201
Video Materials and Films (Number of Units)		254	1,303
Number of Titles		305	1,270
Machine Readable Materials/Computer Files (Number of Titles)		581	1,078
Machine Readable Materials/Computer Files (Number of Units)			1,714
Other Library Materials (Number of Titles)	4,948	23	23

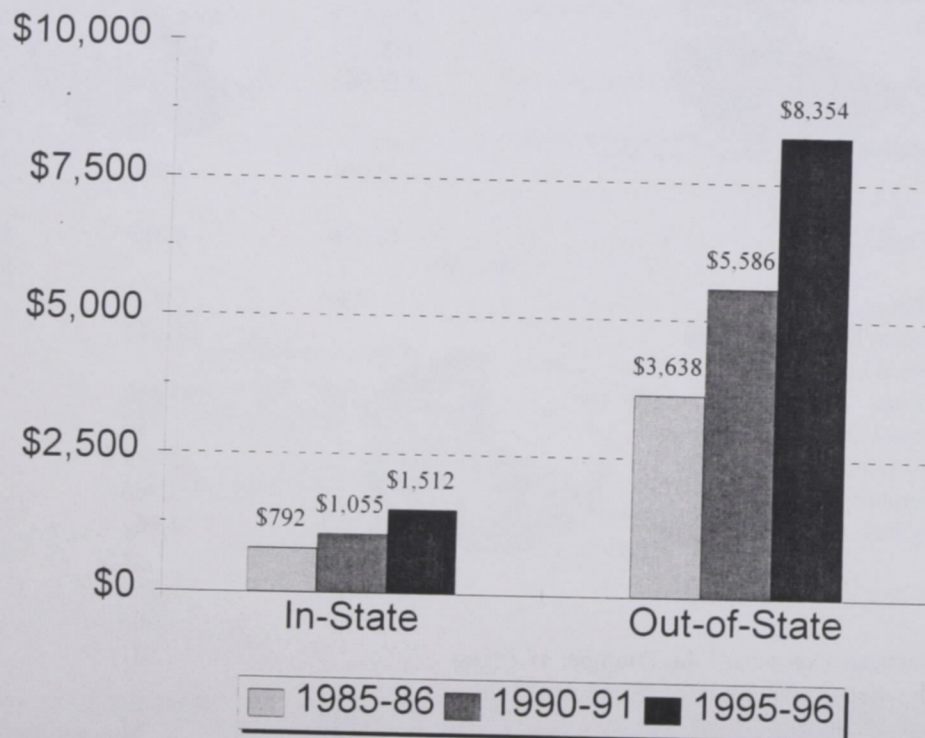
\* The focus of this document varies from year to year; therefore, data for particular categories are sometimes not reported.  
SOURCE: IPEDS Libraries Reports

# Financial Affairs

## Student Tuition, Fees, and Charges for the 1995-96 Academic Year

CATEGORY	UNDERGRADUATE		GRADUATE		FIRST PROFESSIONAL	
	IN-STATE	OUT-OF STATE	IN-STATE	OUT-OF STATE	IN-STATE	OUT-OF STATE
TUITION	\$840.00	\$7,682.00	\$840.00	\$7,682.00	\$840.00	\$9,402.00
OTHER REQUIRED FEES						
Athletic Fee	199.00	199.00				
Health Services Fee	148.00	148.00				
Debt Services Fee (s)	22.00	22.00				
General Student Activity Fee	243.00	243.00				
Educational & Technical	59.50	59.50				
TOTAL FEES	671.50	671.50	636.50	636.50	773.50	773.50
TOTAL TUITION & REQUIRED FEES	1,511.50	8,353.50	1,476.50	8,318.50	1,613.50	10,175.50
RESIDENCE HALL FEE	1,574.00	1,574.00	1,574.00	1,574.00	1,574.00	1,574.00
BOARD PLAN (7-DAY)	1,432.00	1,432.00	1,432.00	1,432.00	1,432.00	1,432.00

### Undergraduate Tuition and Required Fees



SOURCE: NCHED A-3 Student Tuition, Fees, and Charges Reports

# Financial Affairs

## Student Financial Aid 1994-95 \*

### Scholarships, Grants, and Awards

	Number	Average Award	Total Amount
<b>Undergraduate</b>			
Non-Athletic	1,755	1,243	2,181,263
Athletic	128	3,237	414,345
Supplemental Education Opportunity Grant	601	1,355	814,084
Pell - Entitlement Grant	2,057	1,732	3,562,525
Vocational Rehabilitation	59	1,400	82,609
Veterans Benefits	147	2,422	356,008
<b>Graduate and Professional</b>			
Assistance to Professional Students (Law)	103	1,128	116,186
Fellowships, Traineeships, Grants & Scholarships (Graduate)	203	817	165,910
Assistantships (Graduate)	82	2,640	216,476
Vocational Rehabilitation	5	1,068	5,339
Veterans Benefits	48	1,602	76,909

### Student Employment

<b>Undergraduate</b>			
Federal Work-Study	273	606	165,532
Other Student Employment	179	1,003	179,569
<b>Graduate and Professional</b>			
Federal Work-Study	31	1,844	57,149
Other Student Employment	33	5,116	168,820

### Student Loans

<b>Undergraduate</b>			
Out-of-State Stafford/PLUS/SLS	2,504	3,468	8,684,170
Perkins	299	2,274	679,963
<b>Graduate and Professional</b>			
Out-of-State Stafford/PLUS/SLS	331	10,253	3,393,599
Perkins			

### Financial Aid Awards

Total Number of Aid Applicants	7,174
Applicants Who Actually Enrolled	4,536
Number of Awards and Loans	9,870
Unduplicated Number of Aid Recipients	4,202
% of All Enrolled Students Receiving Aid **	64.3%
Dollar Amount of Awards and Loans	\$24,367,774
Mean Award	\$2,469
Mean Award Per Recipient	\$5,799

\* Undergraduate scholarships from external sources are not included.

\*\* The percentage of students eligible to receive awards is sometimes cited as an indicator of financial aid activity. This figure would be higher than the percentage calculated on all enrolled students.

SOURCES: NCHED A-10 Student Financial Aid Summary, Fall, 1995 and OCR 21KB3 Financial Assistance to Student Institutions, Fall 1995

*Facts to Support Planning*

# Degree Programs and Program Tracks

## Academic Program Inventory

API CODE	DIVISION AND PROGRAM TITLE	DEGREE		
		LEVEL	DEGREE	PROGRAM TRACK
<b>BIOLOGICAL SCIENCE</b>				
0401	Biology, General	B	B.S.	Biology
		B	B.S.	Biology, Secondary Education
		M	M.S.	Biology
		M	M.S.	Biology, Secondary Education
<b>BUSINESS AND MANAGEMENT</b>				
0502	Accounting	B	B.B.A.	Accounting
0506	Business Management and Administration	B	B.B.A.	Business Administration
		B	B.B.A.	Banking and Finance
		B	B.B.A.	Computer Information Systems
		B	B.B.A.	Management
		B	B.B.A.	Marketing
		M	M.B.A.	Business Administration
0517	Business Economics	B	B.B.A.	Economics
		B	B.A.	Economics
<b>COMPUTER &amp; INFORMATION SCIENCE</b>				
0701	Computer & Information Sciences, General	B	B.S.	Computer Science
0702	Information Sciences & Systems	M	M.I.S.	Information Sciences
<b>EDUCATION</b>				
0802	Elementary Education, General	B	B.A.	Elementary Ed., Intermediate (4-6)
		B	B.A.	Early Childhood Education (K-4)
		M	M.A.	Elementary Ed. (Early Childhood and Intermediate)
		M	M.Ed.	Elementary Ed. (Early Childhood and Intermediate)
0804	Middle Grades Education	B	B.A.	Middle Level Education
		M	M.A.	Middle Level Education
		M	M.Ed.	Middle Level Education
0808	Special Education, General	M	M.Ed.	Education of Mentally Handicapped
		M	M.Ed.	Education of the Behaviorally-Emotionally Handicapped

# Degree Programs and Program Tracks

## Academic Program Inventory

API CODE	DIVISION AND PROGRAM TITLE	DEGREE LEVEL	DEGREE	PROGRAM TRACK
0826	Student Personnel	M	M.A.	School Counseling
		M	M.A.	Career Counseling and Placement
		M	M.A.	Agency Counseling
0835	Physical Education	B	B.S.	Physical Education
		M	M.S.	Physical Education
		M	M.S.	Special Physical Education
		M	M.S.	Physical Education, Secondary Education
0837	Health Education	B	B.S.	Health Education
		B	B.S.	Community Health Education
0893	Educational Administration & Supervision	M	M.A.	Educational Leadership
0897	Educational Media	M	M.A.	Instructional Media
<b>FINE AND APPLIED ARTS</b>				
1002	Art	B	B.A.	Art, General
		B	B.A.	Visual Communications
		B	B.A.	Art, Fine Art
		B	B.A.	Art, Art Education
1004	Music	B	B.M.	Jazz
		B	B.M.	Sacred Music
1005	Music	B	B.A.	Music (Liberal Arts Program)
		B	B.A.	Music, Music Education
		M	M.A.	Music (Liberal Arts Program)
		M	M.A.	Music Education, K-12
1007	Dramatic Arts	B	B.A.	Dramatic Arts
		B	B.A.	Dramatic Arts, Secondary Education
		B	B.A.	Theatre Arts Education, K-12
<b>FOREIGN LANGUAGES</b>				
1102	French	B	B.A.	French
		B	B.A.	French, Secondary Education
		M	M.A.	French
		M	M.A.	French, Secondary Education
1105	Spanish	B	B.A.	Spanish
		B	B.A.	Spanish, Secondary Education

# Degree Programs and Program Tracks

## Academic Program Inventory

API CODE	DIVISION AND PROGRAM TITLE	DEGREE		PROGRAM TRACK
		LEVEL	DEGREE	
<b>HEALTH PROFESSIONS</b>				
1203	Nursing	B	B.S.N.	Nursing
1220	Speech Pathology & Audiology	M	M.Ed.	Communication Disorders
<b>HUMAN SCIENCES **</b>				
1301	Human Sciences, General	B	B.S.H.E.	Human Sciences, General
		B	B.S.H.E.	Human Sciences, Secondary Education
		M	M.S.	Human Sciences Education
1303	Clothing and Textiles	B	B.S.H.E.	Clothing and Textiles
1305	Family Relations & Child Development	B	B.S.	Early Childhood Education (B-K)
1306	Foods and Nutrition	B	B.S.H.E.	Foods and Nutrition (including Diet)
<b>LAW</b>				
1401	Law, General	P	L.L.B.	Law
		P	J.D.	Law
<b>LETTERS</b>				
1501	English, General	B	B.A.	English
		B	B.A.	English, Secondary Education
		M	M.A.	English
		M	M.A.	English, Secondary Education
1509	Philosophy	B	B.A.	Philosophy
<b>LIBRARY SCIENCE</b>				
1601	Library Science, General	M	M.L.S.	Library Science
<b>MATHEMATICS</b>				
1701	Mathematics, General	B	B.S.	Mathematics
		B	B.S.	Mathematics, Secondary Education
		B	B.S.	Actuarial Science
		M	M.S.	Mathematics
		M	M.S.	Mathematics, Secondary Education
<b>PHYSICAL SCIENCES</b>				
1902	Physics, General	B	B.S.	Physics
		B	B.S.	Physics, Secondary Education
1905	Chemistry, General	B	B.S.	Chemistry
		B	B.S.	Chemistry, Secondary Education
		M	M.S.	Chemistry
		M	M.S.	Chemistry, Secondary Education

# Degree Programs and Program Tracks

## Academic Program Inventory

API CODE	DIVISION AND PROGRAM TITLE	DEGREE		PROGRAM TRACK
		LEVEL	DEGREE	
1917	Earth Sciences, General	M	M.S.	Earth Sciences
<b>PSYCHOLOGY</b>				
2001	Psychology, General	B	B.A.	Psychology
		M	M.A.	Psychology
<b>PUBLIC AFFAIRS AND SERVICES</b>				
2102	Public Administration	M	M.P.A.	Public Administration
2103	Parks and Recreation Management	B	B.S.	Recreation Administration
		M	M.S.	Recreation Administration
2104	Social Work, Helping Services	B	B.S.W.	Social Work
2105	Criminal Justice	B	B.S.	Criminal Justice
		M	M.S.	Criminal Justice
<b>SOCIAL SCIENCES</b>				
2201	Social Sciences, General	B	B.A.	Social Sciences
2205	History	B	B.A.	History
		B	B.A.	History, Secondary Education
		M	M.A.	History
		M	M.A.	History, Secondary Education
2206	Geography	B	B.S.	Geography
2207	Political Sciences and Government	B	B.A.	Political Science
2208	Sociology	B	B.A.	Sociology
		M	M.A.	Sociology

Note: North Carolina Central University is authorized to offer degree programs in 16 discipline divisions at the baccalaureate, master's and professional levels.

\* Level: B=Bachelor's M=Master's P=Professional

\*\* Name Change : Home Economics to Human Sciences

Source: Academic Program Inventory, The University of North Carolina, dated May 30, 1995



## Degrees Conferred

### Undergraduate by Field of Study

COLLEGE OF ARTS & SCIENCES	1985		1990		1995	
	N	%	N	%	N	%
Department of Art	5	1.0	7	1.6	4	0.7
Department of Biology	28	5.5	29	6.5	39	6.5
Department of Chemistry	10	2.0	3	0.7	5	0.8
Department of Criminal Justice	72	14.3	32	7.2	76	12.8
Department of Dramatic Arts	4	0.8	7	1.6	4	0.7
Department of English	17	3.4	20	4.5	25	4.2
Department of Geography	1	0.2	6	1.4	5	0.8
Department of Health Education	13	2.6	10	2.3	6	1.0
Department of History						
History	12	2.4	10	2.3	26	4.4
Social Sciences, General	--	--	--	--	--	--
Department of Human Sciences						
Clothing and Textiles	4	0.8	1	0.2	4	0.7
Foods and Nutrition	5	1.0	--	--	7	1.2
Human Sciences, General	5	1.0	11	2.5	10	1.7
Department of Mathematics & Computer Science						
Mathematics, General	10	2.0	6	1.4	10	1.7
Computer & Information Science	--	--	9	2.0	9	1.5
Department of Modern Foreign Languages						
French	--	--	--	--	1	0.2
Spanish	1	0.2	3	0.7	2	0.3
Department of Music	5	1.0	3	0.7	3	0.5
Department of Nursing	53	10.5	7	1.6	74	12.4
Department of Philosophy	--	--	--	--	1	0.2
Department of Physical Education						
Parks and Recreation	--	--	5	1.1	1	0.2
Physical Education	3	0.6	5	1.1	8	1.3
Social Work, Helping Services	--	--	--	--	3	0.5
Department of Physics	2	0.4	1	0.2	--	--
Department of Political Science & Government	58	11.5	111	25.0	81	13.6
Department of Psychology	12	2.4	9	2.0	22	3.7
Department of Sociology	17	3.4	22	5.0	19	3.2
<b>TOTAL ARTS &amp; SCIENCES</b>	<b>337</b>	<b>66.7</b>	<b>317</b>	<b>71.4</b>	<b>445</b>	<b>74.7</b>

# Degrees Conferred

## Undergraduate by Field of Study (Continued)

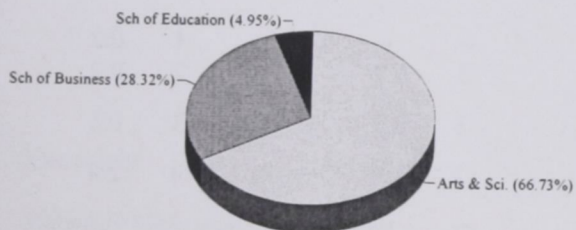
	1985		1990		1995	
	N	%	N	%	N	%
<b>SCHOOL OF BUSINESS</b>						
Accounting	24	4.8	14	3.2	21	3.5
Business Economics	--	--	--	--	--	--
Business Management and Administration	115	22.8	75	16.9	107	18.0
Business, Commerce & Distributive Education*	4	0.8	1	0.2	--	--
<b>TOTAL SCHOOL OF BUSINESS</b>	<b>143</b>	<b>28.3</b>	<b>90</b>	<b>20.3</b>	<b>128</b>	<b>21.5</b>
<b>SCHOOL OF EDUCATION</b>						
Elementary Education, General	25	5.0	26	5.9	20	3.4
Middle Grades Education**	--	---	11	2.5	3	0.5
<b>TOTAL SCHOOL OF EDUCATION</b>	<b>25</b>	<b>5.0</b>	<b>37</b>	<b>8.3</b>	<b>23</b>	<b>3.9</b>
<b>TOTALS</b>	<b>505</b>	<b>100</b>	<b>444</b>	<b>100</b>	<b>596</b>	<b>100</b>

SOURCE: Student Data Files

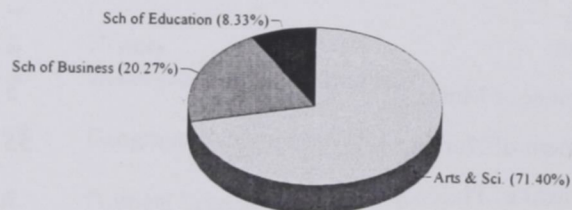
\*Program Discontinued

\*\*New Program

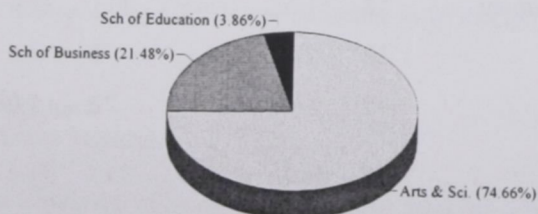
Degrees Conferred, 1985



Degrees Conferred, 1990



Degrees Conferred, 1995



# Degrees Conferred

## Graduate by Field of Study

	1985		1990		1995	
	N	%	N	%	N	%
<b>COLLEGE OF ARTS &amp; SCIENCES</b>						
Department of Biology	6	2.8	3	1.2	6	1.8
Department of Chemistry	1	0.5	2	0.8	--	--
Department of Criminal Justice	--	--	5	1.9	6	1.8
Department of English	3	1.4	3	1.2	4	1.2
Department of History History	2	0.9	6	2.3	2	0.6
Department of Human Sciences Human Sciences, General	2	0.9	5	1.9	21	6.4
Department of Mathematics & Computer Science Mathematics, General	1	0.5	3	1.2	1	0.3
Department of Modern Foreign Languages French	--	--	--	--	--	--
Department of Music	1	0.5	--	--	1	0.3
Department of Physical Education Physical Education	4	1.8	--	--	6	1.8
Parks and Recreation			1	0.4	1	0.3
Department of Public Administration	--	--	15	5.8	7	2.1
Department of Psychology	5	2.3	7	2.7	10	3.0
Department of Sociology	2	0.9	2	0.8	3	0.9
<b>TOTAL ARTS &amp; SCIENCES</b>	<b>27</b>	<b>12.4</b>	<b>52</b>	<b>20.2</b>	<b>68</b>	<b>20.7</b>
<b>SCHOOL OF BUSINESS</b>						
Business, Commerce & Distributive Education*	1	0.5	1	0.4	--	--
Business Management and Administration	5	2.3	3	1.2	10	3.0
<b>TOTAL SCHOOL OF BUSINESS</b>	<b>6</b>	<b>2.8</b>	<b>4</b>	<b>1.6</b>	<b>10</b>	<b>3.0</b>
<b>SCHOOL OF EDUCATION</b>						
Special Education	11	5.0	10	3.9	10	3.0
Educational Administration & Supervision	14	6.4	18	7.0	19	5.8
Educational Media	9	4.1	10	3.9	8	2.4
Elementary Education, General	24	11.0	13	5.0	5	1.5
Middle Grades Education	--	--	9	3.5	4	1.2
Speech Correction	--	--	1	0.4	1	0.3
Student Personnel, Guidance & Counseling	20	9.2	35	13.6	42	12.8
Speech-Language Pathology & Audiology	--	--	--	--	25	7.6
<b>TOTAL SCHOOL OF EDUCATION</b>	<b>78</b>	<b>35.8</b>	<b>96</b>	<b>37.2</b>	<b>114</b>	<b>34.7</b>

# Degrees Conferred

## Graduate by Field of Study (Continued)

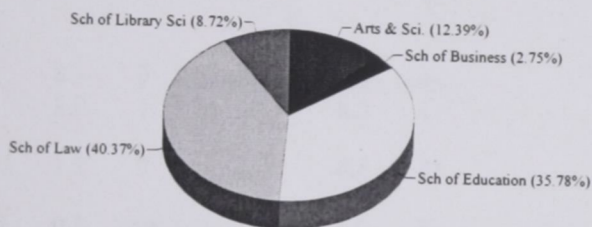
SCHOOL OF LAW	1985		1990		1995	
Juris Doctor's	88	40.4	61	23.6	85	25.8
SCHOOL OF LIBRARY & INFORMATION SCIENCES						
Library Science, General	19	8.7	45	17.4	48	14.6
Information Sciences & Systems**	--	--	--	--	4	1.2
TOTAL SCH. OF LIBRARY & INFO. SCIENCES	19	8.7	45	17.4	52	15.8
TOTALS	218	100	258	100	329	100

SOURCE: Student Data Files

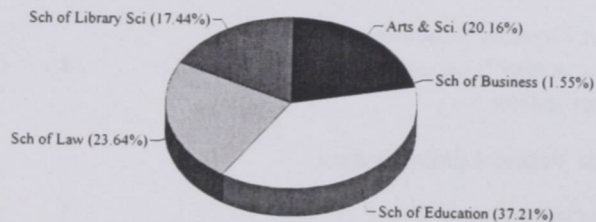
\* Program discontinued

\*\* New Program

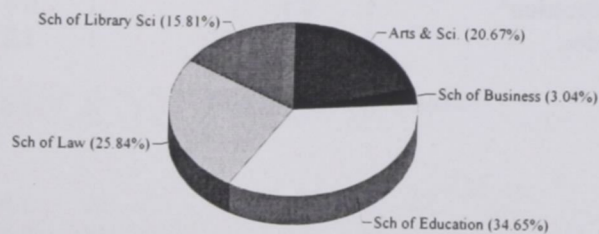
Degrees Conferred, 1985



Degrees Conferred, 1990



Degrees Conferred, 1995



# Degrees Conferred

## Characteristics of Graduated Students

		Black	White	Other	Total
<b>College of Arts &amp; Sciences</b>					
Bachelors	Female	257	42	6	305
	Male	117	9		126
Masters	Female	31	4	4	39
	Male	17	6	0	23
<b>Summary</b>		<b>422</b>	<b>61</b>	<b>10</b>	<b>493</b>
<b>School of Business</b>					
Bachelors	Female	77	1	1	79
	Male	45	4	0	49
Masters	Female	2	1	0	3
	Male	4	2	1	7
<b>Summary</b>		<b>128</b>	<b>8</b>	<b>2</b>	<b>138</b>
<b>School of Education</b>					
Bachelors	Female	26	3	0	29
	Male	5	3	0	8
Masters	Female	57	34	2	93
	Male	18	9	0	27
<b>Summary</b>		<b>106</b>	<b>49</b>	<b>2</b>	<b>157</b>
<b>School of Law</b>					
Professional	Female	27	22	1	50
	Male	17	18	0	35
<b>Summary</b>		<b>44</b>	<b>40</b>	<b>1</b>	<b>85</b>
<b>School of Library &amp; Information Sciences</b>					
Masters	Female	14	21	1	36
	Male	4	8	4	16
<b>Summary</b>		<b>18</b>	<b>29</b>	<b>5</b>	<b>52</b>

Source: Graduated Student Data File, 1995

# Credit Hours Generated

## Undergraduate - Percentage Distribution

DISCIPLINE	1990-91 %	1991-92 %	1992-93 %	1993-94 %	1994-95 %	1995-96 %
Art	2.1	2.1	2.1	1.8	1.9	1.9
Biology	6.2	6.2	6.5	6.8	6.7	6.4
Chemistry	2.1	2.4	2.3	2.6	2.6	3.4
Criminal Justice	2.9	3.1	3.1	3.3	3.2	3.8
Critical Foundation in Arts & Sciences (CFAS)*	--	--	--	--	--	23.2
Dramatic Arts	1.5	1.4	1.1	1.3	1.2	1.3
English	13.2	11.5	11.8	12.3	12.3	7.8
Geography	1.9	2.1	2.0	1.9	2.0	1.8
Health Education	3.8	3.4	3.4	3.6	3.7	2.6
History	8.8	8.7	7.1	7.7	7.3	6.4
Human Sciences	1.9	2.1	2.7	2.7	3.0	4.9
Mathematics & Computer Science	10.9	11.0	10.5	9.8	9.4	10.2
Modern Foreign Languages	5.8	5.6	5.7	5.5	6.4	0.8
Music	2.8	2.8	2.7	2.7	2.5	2.2
Nursing	1.4	1.6	2.8	3.5	3.4	3.8
Orientation *	0.8	0.6	0.7	0.7	0.7	0.0
Philosophy	0.9	1.0	0.9	0.9	0.9	1.1
Physical Education	3.2	3.0	3.6	3.7	4.0	3.3
Physics	0.9	0.9	0.9	0.8	0.9	1.2
Political Science	6.5	6.7	6.6	5.6	5.6	6.5
Psychology	2.5	2.7	3.3	3.0	3.0	3.3
ROTC	0.1	0.1	0.1	0.1	0.1	0.2
Sociology	4.2	4.6	4.1	4.1	4.6	3.7
<hr/>						
Total College of Arts & Sciences	84.5	83.5	83.9	84.4	85.4	84.3
School of Business	10.8	11.2	11.0	10.3	9.6	9.9
School of Education	4.8	5.4	5.0	5.3	5.0	5.8
<hr/>						
TOTAL PERCENTAGES	100	100	100	100	100	100
<hr/>						
TOTAL CREDIT HOURS PRODUCED	N=114,020	N=111,188	N=116,106	N=117,282	N=114,490	N=109,830

\* Critical Foundation in Arts & Sciences (CFAS) and Orientation are not departments  
 SOURCE: Fall and Spring Credit Hours Tapes, Student Information System

## Credit Hours Generated

### Graduate - Percentage Distribution

DISCIPLINE	1990-91 %	1991-92 %	1992-93 %	1993-94 %	1994-95 %	1995-96 %
Biology	0.7	0.9	1.3	1.1	1.3	1.2
Chemistry	0.5	0.4	0.3	0.7	0.7	0.4
Criminal Justice	1.6	1.2	2.1	2.4	2.5	2.5
Geography	--	--	--	--	--	0.3
English	0.9	0.5	0.6	0.7	0.5	0.5
History	1.1	0.7	1.3	1.3	1.5	1.4
Human Sciences	0.4	1.1	2.0	0.6	1.0	1.0
Mathematics & Computer Science	0.4	0.3	0.6	0.4	0.3	0.1
Modern Foreign Languages	<1	0.1	--	--	0.0	0.0
Music	0.1	0.1	0.1	0.0	0.2	0.2
Physical Education & Recreation	0.5	0.8	1.4	1.3	1.0	1.4
Public Administration	4.8	4.9	5.5	5.9	6.2	6.2
Psychology	2.5	2.7	2.9	4.0	3.8	3.5
Sociology	0.8	0.7	1.0	0.7	0.7	0.7
<b>Total College of Arts &amp; Sciences</b>	<b>14.4</b>	<b>14.1</b>	<b>19.2</b>	<b>19.1</b>	<b>19.6</b>	<b>19.5</b>
School of Business	2.1	1.8	1.7	1.7	1.8	1.8
School of Education	22.6	24.0	20.2	23.1	25.0	23.3
School of Law	51.4	49.7	46.7	46.8	44.6	45.1
School of Library & Information Science	9.4	10.4	12.2	9.3	9.0	10.4
<b>TOTAL PERCENTAGES</b>	<b>100</b>	<b>100</b>	<b>100</b>	<b>100</b>	<b>100</b>	<b>100</b>
<b>TOTAL CREDIT HOURS PRODUCED</b>	<b>N=16,527</b>	<b>N=17,058</b>	<b>N=17,042</b>	<b>N=17,043</b>	<b>N=18,842</b>	<b>N=19,222</b>

SOURCE: Fall and Spring Credit Hours Tapes, Student Information System

## Grades Assigned by School

### Percentage Distribution by Course Level

FALL 1994	A	B	C	D	F	Total Number
Arts & Sciences	27.0	29.5	25.2	9.3	9.0	16,613
Lower	23.6	28.0	27.0	10.9	10.5	12,647
Upper	26.4	37.4	26.6	5.5	4.1	3,396
Grad.	51.2	41.8	6.0	0.0	1.0	570
Business	14.9	33.1	34.8	9.7	7.5	1,696
Lower	15.6	25.9	36.3	11.1	11.1	524
Upper	13.3	35.5	35.5	9.6	6.1	1,149
Grad.	41.5	50.9	5.7	0.0	1.9	53
Education	53.2	34.6	10.0	1.3	0.8	1,437
Lower	41.2	35.3	17.6	0.0	5.9	51
Upper	43.5	36.2	16.8	2.7	0.7	690
Grad.	63.8	32.9	2.7	0.0	0.6	696
Law	13.9	36.4	43.8	4.8	1.1	640
Library Science	56.7	38.4	4.1	0.0	0.8	245
Upper	45.6	48.2	4.4	0.0	1.7	114
Grad.	66.4	29.8	3.8	0.0	0.0	131
SPRING 1995	A	B	C	D	F	Total Number
Arts & Sciences	27.0	29.5	25.2	9.3	8.9	15,529
Lower	24.1	27.8	26.5	10.6	11.0	10,907
Upper	31.5	33.0	24.1	6.9	4.4	4,131
Grad.	54.2	37.9	7.5	0.0	0.4	491
Business	14.1	35.5	35.2	8.5	6.7	1,734
Lower	17.2	28.9	31.5	11.9	10.4	546
Upper	11.7	37.4	38.5	7.2	5.2	1,131
Grad.	31.5	63.2	5.3	0.0	0.0	57
Education	62.2	27.0	8.2	1.6	1.0	1,765
Lower	48.7	26.9	6.4	5.1	12.8	78
Upper	56.3	26.8	13.7	2.6	0.6	922
Grad.	70.7	27.3	1.8	0.0	0.1	765
Law	29.5	33.7	31.1	4.6	1.1	373
Upper	50.0	50.0	0.0	0.0	0.0	2
Grad.	29.4	33.7	31.2	4.6	1.1	371
Library Science	58.8	37.3	3.4	0.0	0.4	233
Upper	59.8	35.6	3.4	0.0	1.1	87
Grad.	58.2	38.4	3.4	0.0	0.0	146

SOURCE: Fall and Spring Grade Tapes, Student Information System



# School Profiles

## College of Arts & Sciences

### STUDENT INFORMATION

#### Applications and New Enrollment, Fall 1995

	Freshmen	Transfers	Graduate
Applied	2,366	484	211
Accepted	1,032	477	175
Enrolled	513	248	111

#### Degree-Seeking Student Enrollment, Fall 1995

	Black	White	Other	Total
Undergraduate	3,370	238	45	3,653
Graduate	331	89	3	423
TOTAL	3,701	327	48	4,076

#### Degrees Awarded, 1994 - 95

	Black	White	Other	Total
Undergraduate	376	52	4	432
Graduate	62	24	4	90
TOTAL	438	76	8	522

#### Total Credit Hours Generated

	1994-95		1995-96	
	Hours	# of Classes	Hours	# of Classes
Undergraduate	97,744	1,583	92,614	1,647
Graduate	3,697	169	3,747	214
TOTAL	101,441	1,752	96,361	1,861

### FACULTY/ADMINISTRATIVE INFORMATION

#### Faculty/EPA-Headcount, Fall 1995

	Full-Time	Part-Time	Total
Professor	35	--	35
Associate	57	--	57
Assistant	56	--	56
Instructor	8	--	8
Other Faculty	41	72	113
TOTAL	197	72	269

#### Faculty Statistics, Fall 1995\*

	#	Mean Age	Mean Salary
Professor	35	55	55,118
Associate	43	52	44,673
Assistant	18	48	38,873
Instructor	1	--	--

Budgeted FTE 212

#### Instructional Budget for Selected Areas: State Appropriations, 1995-96

Supplies	1,572
Equipment	111,762
Current Services	36,809
Instructional Personnel	9,196,287
TOTAL	\$9,346,430

\* Mean age & mean salary data are computed on all full-time faculty.

Undecided students are omitted from the applications and enrollment figures.

# School Profiles

## Business

### STUDENT INFORMATION

#### Applications and New Enrollment, Fall 1995

	Freshmen	Transfers	Graduate
Applied	110	--	31
Accepted	110	--	20
Enrolled	40	--	11

#### Degree-Seeking Student Enrollment, Fall 1995

	Black	White	Other	Total
Undergraduate	276	4	2	282
Graduate	20	9	0	29
TOTAL	296	13	2	311

#### Degrees Awarded, 1994 - 95

	Black	White	Other	Total
Undergraduate	119	5	--	124
Graduate	6	4	--	10
TOTAL	125	9	--	134

#### Total Credit Hours Generated

	1994-95		1995-96	
	Hours	# of Classes	Hours	# of Classes
Undergraduate	11,014	178	10,839	169
Graduate	342	16	345	14
TOTAL	11,356	194	11,184	183

### FACULTY/ADMINISTRATIVE INFORMATION

#### Faculty/EPA-Headcount, Fall 1995

	Full-Time	Part-Time	Total
Professor	8	--	8
Associate	10	--	10
Assistant	9	--	9
Instructor	1	--	1
Other Faculty	6	13	19
TOTAL	34	13	47

#### Faculty Statistics, Fall 1995\*

	#	Mean Age	Mean Salary
Professor	8	54	68,306
Associate	8	50	56,860
Assistant	6	56	50,552
Instructor	1	--	--

Budgeted FTE 35.3

#### Instructional Budget for Selected Areas: State Appropriations, 1995-96

Supplies	11,000
Equipment	24,000
Current Services	28,229
Instructional Personnel	2,083,796
TOTAL	\$2,147,025

\* Mean age & mean salary data are computed on all full-time faculty.

# School Profiles

## Education

### STUDENT INFORMATION

#### Applications and New Enrollment, Fall 1995\*

	Transfers	Graduate
Applied	--	51
Accepted	--	46
Enrolled	--	26

#### Degree-Seeking Student Enrollment, Fall 1995

	Black	White	Other	Total
Undergraduate	20	3	1	24
Graduate	147	81	2	230
TOTAL	167	84	3	254

#### Degrees Awarded, 1994 - 95

	Black	White	Other	Total
Undergraduate	18	5	--	23
Graduate	51	26	1	78
TOTAL	69	31	1	101

#### Total Credit Hours Generated

	1994-95		1995-96	
	Hours	# of Classes	Hours	# of Classes
Undergraduate	5,732	135	6,377	136
Graduate	4,707	104	4,476	146
TOTAL	10,439	239	10,853	282

### FACULTY/ADMINISTRATIVE INFORMATION

#### Faculty/EPA-Headcount, Fall 1995

	Full-Time	Part-Time	Total
Professor	9		9
Associate	7	--	7
Assistant	12	--	12
Instructor	--	--	0
Other Faculty	4	7	11
TOTAL	32	7	39

#### Faculty Statistics, Fall 1995\*\*

	#	Mean Age	Mean Salary
Professor	7	59	51,144
Associate	4	49	43,023
Assistant	1	--	--
Instructor	--	--	--

Budgeted FTE 32.2

#### Instructional Budget for Selected Areas: State Appropriations, 1995-96

Supplies	5,650
Equipment	0
Current Services	11,820
Instructional Personnel	1,585,936
TOTAL	\$1,603,406

\* Freshmen are not directly admitted into the School of Education.

\*\* Mean age & mean salary data are computed on all full-time faculty.

# School Profiles

## Law

### STUDENT INFORMATION

#### Applications and New Enrollment, Fall 1995

Applied	1566
Accepted	263
Enrolled	119

#### Degree-Seeking Student Enrollment, Fall 1995

Black	166
White	161
Other	6
<b>TOTAL</b>	<b>333</b>

#### Degrees Awarded, 1994 - 95

Black	44
White	39
Other	1
<b>TOTAL</b>	<b>84</b>

#### Total Credit Hours Generated

1994-95		1995-96	
Hours	# of Classes	Hours	# of Classes
8,404	108	8,662	108

### FACULTY/ADMINISTRATIVE INFORMATION

#### Faculty/EPA-Headcount, Fall 1995

	Full-Time	Part-Time	Total
Professor	9	--	9
Associate	5	--	5
Assistant	2	--	2
Instructor	--	--	0
Other Faculty	6	6	12
<b>TOTAL</b>	<b>22</b>	<b>6</b>	<b>28</b>

#### Faculty Statistics, Fall 1995

	#	Mean	Mean
	Tenured	Age	Salary
Professor	9	48	83,525
Associate	5	43	75,803
Assistant	--	--	--
Instructor	--	--	--

Budgeted FTE 23

#### Instructional Budget for Selected Areas: State Appropriations, 1995-96

Supplies	2,000
Equipment	20,500
Current Services	22,325
Instructional Personnel	1,604,730
<b>TOTAL</b>	<b>\$1,649,555</b>

\* Mean age & mean salary data are computed on all full-time faculty.

# School Profiles

## Library and Information Sciences

### STUDENT INFORMATION

#### Applications and New Enrollment, Fall 1995

Applied	87
Accepted	87
Enrolled	50

#### Degree-Seeking Student Enrollment, Fall 1995

Black	42
White	112
Other	20

TOTAL 174

#### Degrees Awarded, 1994 - 95

Black	13
White	24
Other	2
TOTAL	39

#### Total Credit Hours Generated

1994-95		1995-96	
Hours	# of Classes	Hours	# of Classes
1,692	60	1,992	61

### FACULTY/ADMINISTRATIVE INFORMATION

#### Faculty/EPA-Headcount, Fall 1995

	Full-Time	Part-Time	Total
Professor	2	--	2
Associate	2	--	2
Assistant	--	--	0
Instructor	--	--	0
Other Faculty	--	8	8
TOTAL	4	8	12

#### Faculty Statistics, Fall 1995

	# Tenured	Mean Age	Mean Salary
Professor	2	--	--
Associate	2	--	--
Assistant	--	--	--
Instructor	--	--	--

Budgeted FTE 7.1

#### Instructional Budget for Selected Areas: State Appropriations, 1995-96

Supplies	3,500
Equipment	5,000
Current Services	5,148
Instructional Personnel	399,342
TOTAL	\$412,990

\* Mean age & mean salary data are computed on all full-time faculty.

## Persistence

### Students Enrolled, Graduated, Suspended, and Not Enrolled, One Year After Initial Entry--Percentage Distribution \*

CLASS	1987	1988	1989	1990	1991	1992	1993	1994
<b>FRESHMAN</b>	%	%	%	%	%	%	%	%
Enrolled	82	83	83	82	83	82	77	77
Graduated	0	0	0	0	0	0	0	0
Not Enrolled	18	17	17	18	17	18	23	23
	N=903	N=764	N=999	N=794	N=559	N=784	N=810	N=767
<b>LOWER LEVEL TRANSFER</b>	%	%	%	%	%	%	%	%
Enrolled	70	60	62	67	70	65	64	71
Graduated	0	0	0	<1	0	7	0	1
Not Enrolled	30	40	38	33	30	28	36	28
	N=164	N=154	N=224	N=226	N=192	N=202	N=189	N=301
<b>UPPER LEVEL TRANSFER</b>	%	%	%	%	%	%	%	%
Enrolled	65	59	83	81	79	57	17	25
Graduated	0	3	17	3	1	4	33	38
Not Enrolled	35	38	0	16	20	39	50	37
	N=48	N=59	N=6	N=32	N=75	N=101	N=18	N=32
<b>FIRST PROFESSIONAL</b>	%	%	%	%	%	%	%	%
Enrolled	86	76	76	85	79	85	86	88
Graduated	0	0	0	<1	2	0	0	0
Not Enrolled	14	24	24	15	19	15	14	12
	N=98	N=91	N=143	N=127	N=91	N=103	N=112	N=109
<b>MASTERS</b>	%	%	%	%	%	%	%	%
Enrolled	62	63	62	68	67	66	58	69
Graduated	4	5	7	4	5	6	2	1
Not Enrolled	34	32	31	28	28	28	40	30
	N=184	N=220	N=138	N=212	N=173	N=179	N=141	N=196

\* While freshman persistence rates reported in previous Facts included part-time as well as full-time students current freshman cohort data only represent students entering with full-time FTE status.  
Note that part-time students are included in the transfer, first professional, and masters cohorts.

## Persistence

A Comparison of Full-Time Entering Freshmen Enrolled At NCCU, Predominantly Black Institutions (PBI), and in the UNC System \*

	1987	1988	1989	1990	1991	1992	1993	1994
AFTER ONE YEAR								
NCCU	78%	78%	77%	79%	83%	79%	77%	78%
PBI	74%	76%	75%	76%	76%	77%	75%	73%
UNC SYSTEM	82%	83%	83%	82%	83%	82%	82%	81%
AFTER TWO YEARS								
NCCU	62%	65%	65%	70%	70%	63%	67%	
PBI	60%	62%	62%	66%	65%	64%	62%	
UNC SYSTEM	70%	72%	71%	72%	71%	70%	70%	
AFTER THREE YEARS								
NCCU	53%	58%	57%	61%	60%	56%		
PBI	52%	56%	55%	58%	58%	57%		
UNC SYSTEM	65%	67%	65%	65%	66%	64%		

\* While persistence rates reported in previous Facts included part-time as well as full-time students, current cohort data only represent students entering with full-time FTE status.

# Persistence

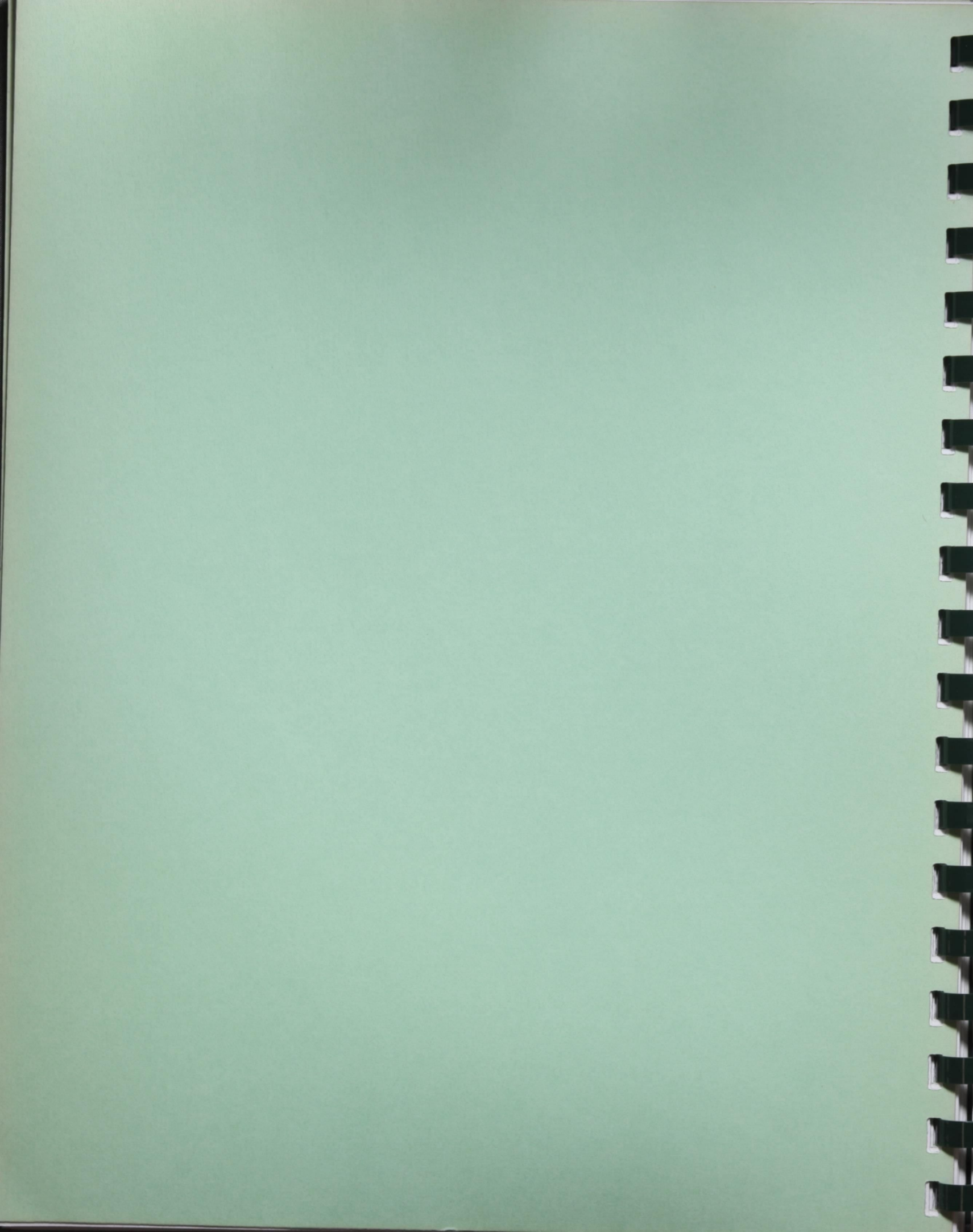
## Graduation Percentages of Full-Time Entering Freshmen Enrolled at NCCU, Predominantly Black Institutions (PBI), and in the UNC System\*

COHORT		MEAN SAT	AFTER 4 YEARS	AFTER 5 YEARS	AFTER 6 YEARS	AFTER 7 YEARS
1982	NCCU	625	14%	25%	29%	29%
	PBI		14%	26%	31%	33%
	UNC SYSTEM		27%	45%	50%	52%
1983	NCCU	639	13%	27%	32%	34%
	PBI		13%	27%	32%	34%
	UNC SYSTEM		26%	46%	51%	53%
1984	NCCU	702	12%	27%	33%	36%
	PBI		14%	27%	32%	34%
	UNC SYSTEM		26%	46%	52%	54%
1985	NCCU	688	14%	27%	32%	35%
	PBI		13%	25%	30%	32%
	UNC SYSTEM		27%	47%	53%	55%
1986	NCCU	695	14%	27%	33%	37%
	PBI		12%	27%	33%	36%
	UNC SYSTEM		26%	48%	53%	55%
1987	NCCU	717	16%	32%	38%	40%
	PBI		17%	33%	39%	41%
	UNC SYSTEM		28%	51%	56%	58%
1988	NCCU	732	16%	33%	40%	42%
	PBI		17%	35%	40%	43%
	UNC SYSTEM		29%	53%	59%	60%
1989	NCCU	720	15%	33%	39%	
	PBI		17%	33%	40%	
	UNC SYSTEM		29%	52%	57%	
1990	NCCU	849	18%	37%		
	PBI		19%	37%		
	UNC SYSTEM		29%	52%		
1991	NCCU	818	17%			
	PBI		20%			
	UNC SYSTEM		29%			

\* While persistence rates reported in previous Facts included part-time as well as full-time students, current cohort data only represent students entering with full-time FTE status.



*Facts About Students*



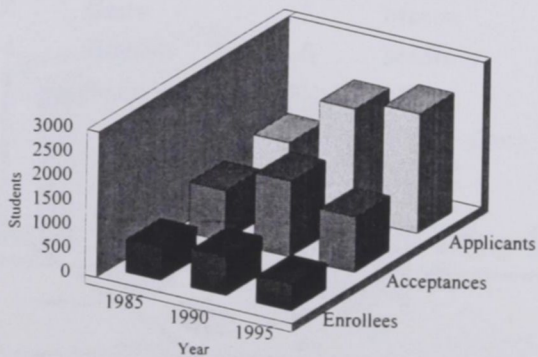
# *Admissions*

# Applicants, Acceptances, and Enrollees\*

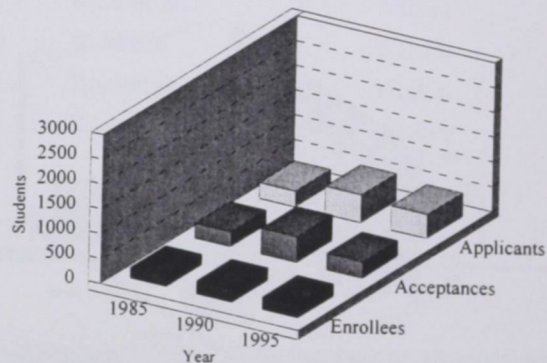
## Freshmen & Transfers

NEW STUDENTS	IN-STATE					OUT-OF-STATE					TOTALS			
	MEN	%	WOMEN	%	TOTAL	MEN	%	WOMEN	%	TOTAL	TOTAL	TOTAL	TOTAL	TOTAL
FIRST-TIME FRESHMEN														
Applicants	524		925		1,449	394		633		1,027	918	1,558	2,476	
Acceptances	312	60%	527	57%	839	133	34%	170	27%	303	445	697	1,142	46%
Enrollees	174	56%	285	54%	459	44	33%	50	29%	94	218	335	553	48%
NEW UNDERGRADUATE TRANSFERS														
Applicants	122		272		394	34		56		90	156	328	484	
Acceptances	121	99%	272	100%	393	32	94%	52	93%	84	153	324	477	99%
Enrollees	68	56%	143	53%	211	22	69%	15	29%	37	90	158	248	52%

**COMPARISON OF FRESHMEN:**  
Applicants, Acceptances, & Enrollees



**COMPARISON OF TRANSFERS:**  
Applicants, Acceptances, & Enrollees



Freshmen	1985	1990	1995
Applicants	1,241	2,259	2,476
Acceptances	1,056	1,567	1,142
Enrollees	669	794	553

Transfers	1985	1990	1995
Applicants	318	558	484
Acceptances	304	516	324
Enrollees	213	258	248

\*Excludes Specials

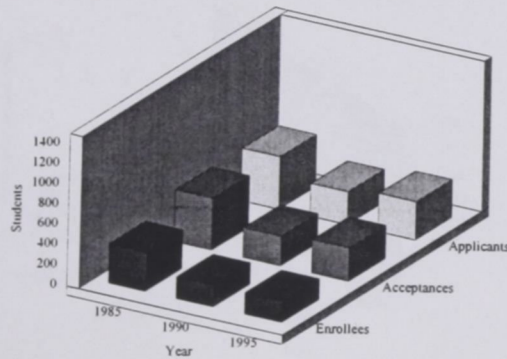
SOURCE: OCR 21KB1-Applications, Acceptances, and Actual Enrollment

# Applicants, Acceptances, and Enrollees\*

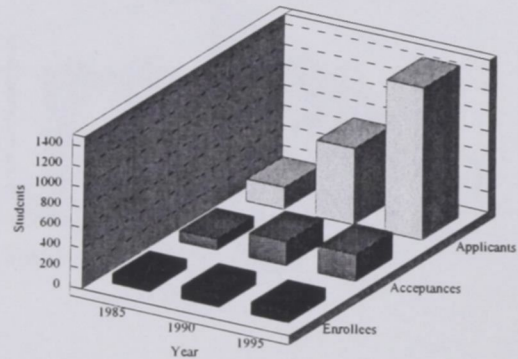
## Graduate & First-Professional

NEW STUDENTS	IN - STATE					OUT - OF - STATE					TOTALS			
	MEN	%	WOMEN	%	TOTAL	MEN	%	WOMEN	%	TOTAL	TOTAL MEN	TOTAL WOMEN	TOTAL	%
<b>GRADUATE STUDENTS</b>														
Applicants	88		212		300	37		43		80	125	255	380	
Acceptances	75	85%	185	87%	260	34	92%	34	79%	68	109	219	328	86%
Enrollees	53	71%	130	70%	183	11	32%	14	41%	25	64	144	208	63%
<b>FIRST PROFESSIONAL STUDENTS</b>														
Applicants	404		311		715	440		411		851	844	722	1566	
Acceptances	97	24%	86	28%	183	36	8%	44	11%	80	133	130	263	17%
Enrollees	46	47%	54	63%	100	6	17%	13	30%	19	52	67	119	45%

**COMPARISON OF GRADUATE STUDENT**  
Applicants, Acceptances, & Enrollees



**COMPARISON OF FIRST PROFESSIONAL**  
Applicants, Acceptances, & Enrollees



Graduate	1985	1990	1995
Applicants	520	325	380
Acceptances	515	293	328
Enrollees	384	213	208

First Professional	1985	1990	1995
Applicants	715	750	1566
Acceptances	183	238	263
Enrollees	100	127	119

\*Excludes Specials

SOURCE: OCR 21KB1-Applications, Acceptances, and Actual Enrollment

## Geographic Origin of First-Time Freshmen

### By North Carolina County

COUNTY	#	COUNTY	#	COUNTY	#	COUNTY	#	COUNTY	#	
Alamance	1	Chowan	0	Guilford	6	Mitchell	0	Rutherford	1	
Alexander	0	Clay	0	Halifax	8	Montgomery	0	Sampson	3	
Alleghany	0	Cleveland	1	Harnett	4	Moore	5	Scotland	5	
Anson	0	Columbus	7	Haywood	0	Nash	7	Stanley	3	
Ashe	0	Craven	2	Henderson	0	New Hanover	6	Stokes	0	
Avery	0	Cumberland	21	Hertford	2	Northampton	4	Surry	0	
Beaufort	2	Currituck	1	Hoke	0	Onslow	8	Swain	0	
Bertie	2	Dare	0	Hyde	0	Orange	17	Transylvania	0	
Bladen	1	Davidson	2	Iredell	1	Pamlico	0	Tyrrell	2	
Brunswick	1	Davie	0	Jackson	0	Pasquotank	2	Union	2	
Buncombe	7	Duplin	7	Johnston	6	Pender	2	Vance	4	
Burke	1	Durham	82	Jones	1	Perquimans	1	Wake	59	
Cabarrus	5	Edgecombe	9	Lee	0	Person	4	Warren	5	
Caldwell	0	Forsyth	21	Lenoir	6	Pitt	5	Washington	1	
Camden	1	Franklin	4	Lincoln	0	Polk	0	Watauga	0	
Carteret	2	Gaston	6	McDowell	1	Randolph	1	Wayne	6	
Caswell	0	Gates	2	Macon	0	Richmond	2	Wilkes	0	
Catawba	4	Graham	0	Madison	0	Robeson	4	Wilson	13	
Chatham	4	Granville	8	Martin	7	Rockingham	0	Yadkin	0	
Cherokee	0	Greene	2	Mecklenburg	35	Rowan	4	Yancey	0	
									<b>TOTAL</b>	<b>459</b>

## Geographic Origin of First-Time Freshmen

### By State

State	#	State	#	State	#	State	#	State	#	
Alabama	0	Hawaii	0	Michigan	2	North Carolina	459	Utah	0	
Alaska	0	Idaho	0	Minnesota	0	North Dakota	0	Vermont	0	
Arizona	0	Illinois	0	Mississippi	0	Ohio	1	Virginia	13	
Arkansas	0	Indiana	0	Missouri	1	Oklahoma	0	Washington	0	
California	2	Iowa	0	Montana	0	Oregon	0	West Virginia	2	
Colorado	1	Kansas	2	Nebraska	0	Pennsylvania	2	Wisconsin	1	
Connecticut	1	Kentucky	1	Nevada	0	Rhode Island	0	Wyoming	0	
Delaware	0	Louisiana	0	New Hampsh	0	South Carolina	4	U.S. Territories	0	
DC	6	Maine	0	New Jersey	3	South Dakota	0	Foreign Countries	1	
Florida	3	Maryland	14	New Mexico	0	Tennessee	0	Unknown	0	
Georgia	4	Massachusetts	8	New York	22	Texas	0			
									<b>TOTAL</b>	<b>553</b>

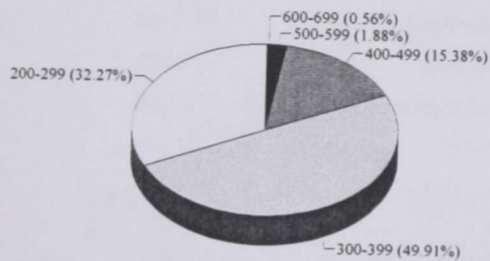
Source: IPEDS EF1 Residence of First-Time Students, Fall 1995

# Distribution of SAT Scores of First-Time Freshmen

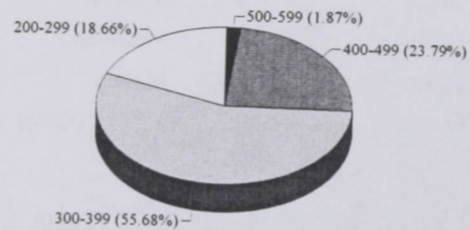
## Verbal Scores

SAT Verbal	1985 N	1990 N	1995 N
700-800	--	--	1
600-699	3	--	5
500-599	10	12	31
400-499	82	153	177
300-399	266	358	188
200-299	172	120	41
Total Reporting	533	643	443
Not Available	136	151	110
Total Students	669	794	553

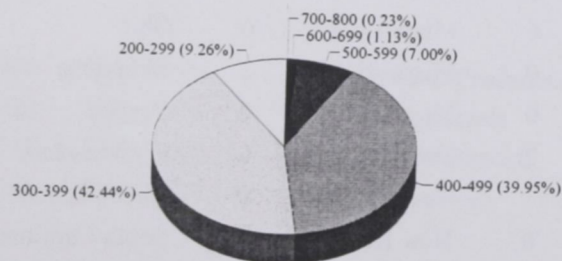
Verbal SAT Scores, 1985



Verbal SAT Scores, 1990



Verbal SAT Scores, 1995

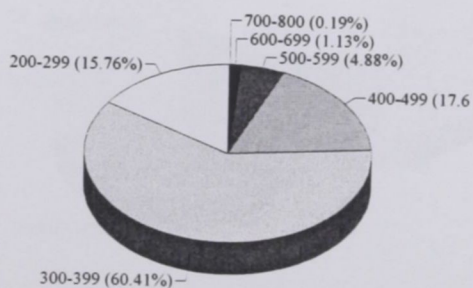


# Distribution of SAT Scores of First-Time Freshmen

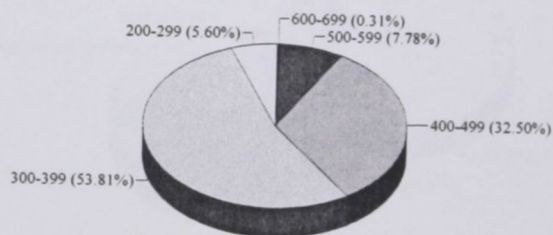
## Math Scores

SAT Mathematical Scores	1985	1990	1995
	N	N	N
700-800	1	--	1
600-699	6	2	13
500-599	26	50	79
400-499	94	209	167
300-399	322	346	166
200-299	84	36	17
Total Reporting	533	643	443
Not Available	136	151	110
Total Students	669	794	553

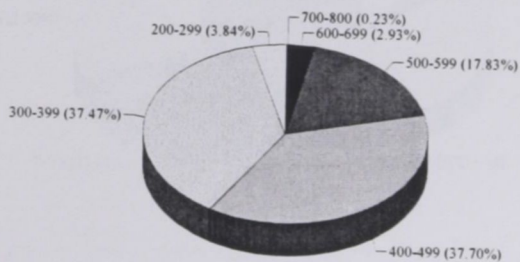
Math SAT Scores, 1985



Math SAT Scores, 1990



Math SAT Scores, 1995



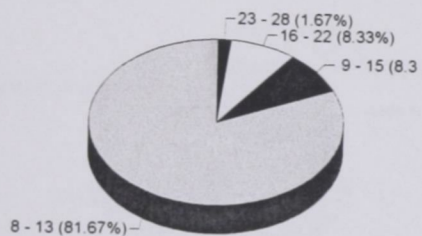


# Distribution of ACT Scores of First-Time Freshmen

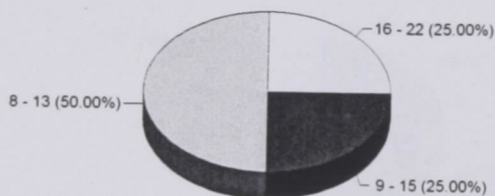
## ACT Scores

ACT	1985	1990	1995
	N	N	N
29 - 36	--	--	32
23 - 28	1	--	5
16 - 22	5	1	142
9 - 15	5	1	11
8 - 13	49	2	21
Total Reporting	60	4	211
Not Available	602	789	342
Total Students	662	793	553

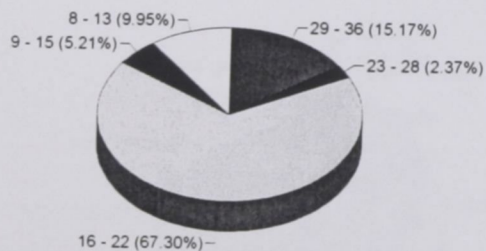
ACT Scores, 1985



ACT Scores, 1990



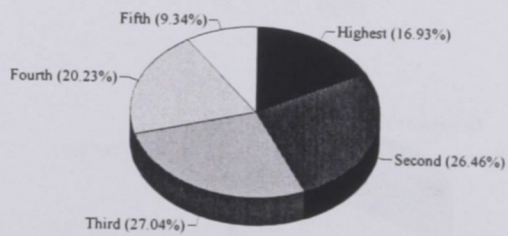
ACT Scores, 1995



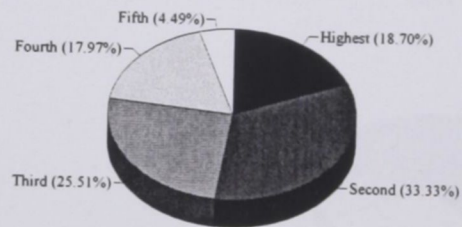
# High School Class Rank of Entering Freshmen

Quintiles	1985	1990	1995
Highest	87	129	90
Second	136	230	112
Third	139	176	106
Fourth	104	124	97
Fifth	48	31	44
Total Reporting	514	690	449
Not Available	155	104	104
TOTAL	669	794	553

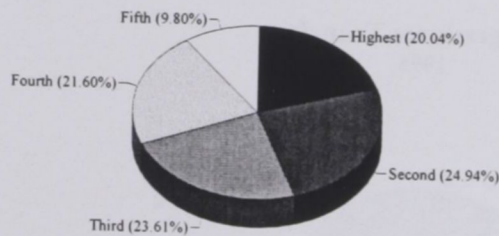
Class Rank, 1985



Class Rank, 1990



Class Rank, 1995

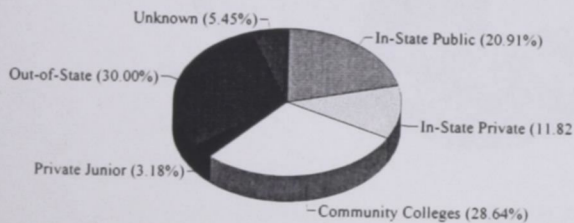


SOURCE: NCHED A-4 First-Time Freshman High School Rank

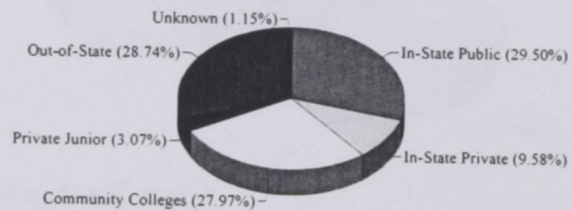
# Undergraduate Transfers

TRANSFER INSTITUTION	1985	1990	1995
In-State Public Senior Institutions	46	77	63
In-State Private Senior Institutions	26	25	18
In-State Public Community Colleges & Technical Institutes	63	73	84
In-State Private Junior Colleges	7	8	4
Out-of-State Institutions	66	75	72
Unknown (In-State)			1
Unknown (Out-of-State)	12	3	6
<b>TOTALS</b>	<b>220</b>	<b>261</b>	<b>248</b>

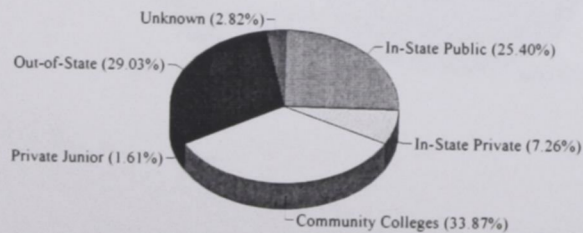
**Undergraduate Transfers**  
1985



**Undergraduate Transfers**  
1990



**Undergraduate Transfers**  
1995



SOURCE: NCHED A-1.2 New Undergraduate Transfer Students

# *Enrollment*

# General Characteristics of Students

## Classification, Full-Time/Part-Time Status, & Sex

CHARACTERISTICS	MEN	%	WOMEN	%	TOTAL	%
<b>UNDERGRADUATE</b>						
FRESHMAN	410	7.5	616	11.3	1,026	18.8
Full-Time	359		509		868	
Part-Time	51		107		158	
SOPHOMORE	374	6.8	642	11.7	1,016	18.6
Full-Time	306		553		859	
Part-Time	68		89		157	
JUNIOR	341	6.2	628	11.5	969	17.7
Full-Time	294		544		838	
Part-Time	47		84		131	
SENIOR	352	6.4	597	10.9	949	17.3
Full-Time	232		427		659	
Part-Time	120		170		290	
SPECIAL	21	0.4	53	1.0	74	1.4
Full-Time	5		9		14	
Part-Time	16		44		60	
UNDERGRADUATE TOTAL	1,498	27.4	2,536	46.4	4,034	73.7
Full-Time	1,196		2,042		3,238	
Part-Time	302		494		796	
<b>FTE</b>	<b>1,426</b>		<b>2,463</b>		<b>3,889</b>	
<b>GRADUATE &amp; FIRST PROFESSIONAL</b>						
MASTER'S	239	4.4	617	11.3	856	15.6
Full-Time	78		195		273	
Part-Time	161		422		583	
SPECIAL	77	1.4	170	3.1	247	4.5
Full-Time	16		27		43	
Part-Time	61		143		204	
<b>FTE</b>	<b>228</b>		<b>535</b>		<b>763</b>	
LAW	152	2.8	181	3.3	333	6.1
Full-Time	151		179		330	
Part-Time	1		2		3	
<b>FTE</b>	<b>144</b>		<b>167</b>		<b>311</b>	
GRAD. & PROF. TOTALS	468	8.6	968	17.7	1,436	26
Full-Time	245		401		646	
Part-Time	223		567		790	
<b>FTE</b>	<b>374</b>		<b>721</b>		<b>1,095</b>	
<b>TOTALS</b>	<b>1,966</b>	<b>35.9</b>	<b>3,504</b>	<b>64.1</b>	<b>5,470</b>	<b>100</b>
Full-Time	1,441		2,443		3,884	
Part-Time	525		1,061		1,586	
<b>TOTAL FTE</b>	<b>1,798</b>		<b>3,165</b>		<b>4,963</b>	

SOURCE: NCHED A1.1 Resident Credit Enrollment, Fall 1995

# General Characteristics of Students

## Classification, Race, & Sex

Classification	Black		White		OTHER		Total		Totals
	Male	Female	Male	Female	Male	Female	Male	Female	
Freshman	373	561	30	45	7	10	410	616	1,026
Sophomore	353	619	15	13	6	10	374	642	1,016
Junior	318	587	14	34	9	7	341	628	969
Senior	303	541	42	52	7	4	352	597	949
Special Undergraduate	17	32	4	20	0	1	21	53	74
<b>Undergraduate Total</b>	<b>1,364</b>	<b>2,340</b>	<b>105</b>	<b>164</b>	<b>29</b>	<b>32</b>	<b>1,498</b>	<b>2,536</b>	<b>4,034</b>
Graduate	153	379	76	210	10	28	239	617	856
Special Graduate	44	106	31	60	2	4	77	170	247
<b>Graduate Total</b>	<b>197</b>	<b>485</b>	<b>107</b>	<b>270</b>	<b>12</b>	<b>32</b>	<b>316</b>	<b>787</b>	<b>1,103</b>
First Professional	67	98	81	80	4	3	152	181	333
<b>First Professional Total</b>	<b>67</b>	<b>98</b>	<b>81</b>	<b>80</b>	<b>4</b>	<b>3</b>	<b>152</b>	<b>181</b>	<b>333</b>
<b>GRAND TOTALS</b>	<b>1,628</b>	<b>2,923</b>	<b>293</b>	<b>514</b>	<b>45</b>	<b>67</b>	<b>1,966</b>	<b>3,504</b>	<b>5,470</b>

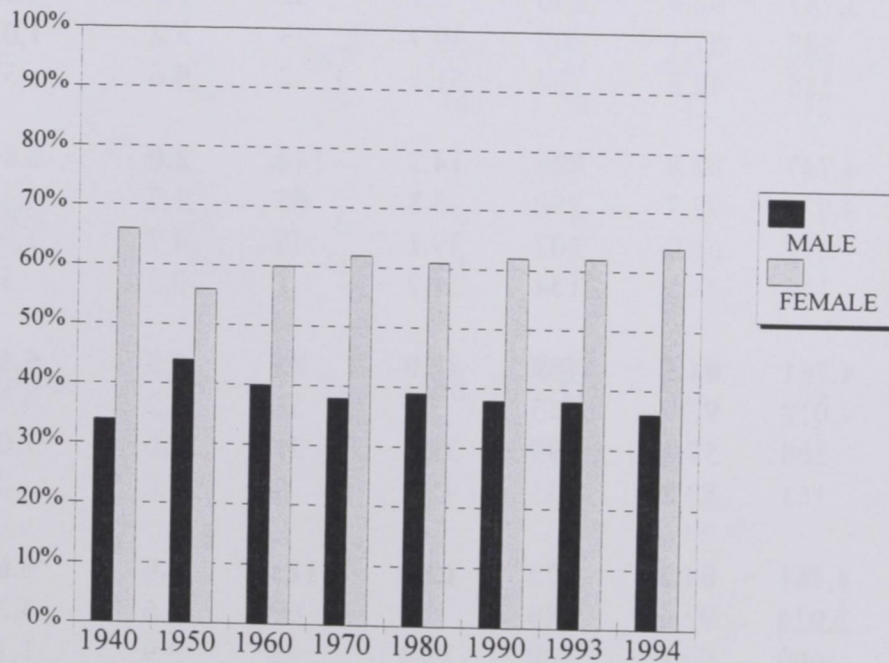
SOURCE: Student Data File, Fall 1995

# General Characteristics of Students

## Distribution by Sex - Historical Comparison

Year	Male N	Female N	Total Enrollment
1950	567	726	1,293
1960	785	1,170	1,955
1970	1,182	1,967	3,149
1980	1,897	3,013	4,910
1990	2,099	3,382	5,481
1993	2,119	3,516	5,635
1994	2,022	3,633	5,655
1995	1,966	3,504	5,470

**Enrollment by Sex**  
1940 - 1994



SOURCE: NCHED A-1.1 Resident Credit Enrollment

# General Characteristics of Students

## Distribution by Race, 1988-1995

YEAR	BLACK	%	WHITE	%	OTHER	%	TOTAL
1988	4,280	82.6	805	15.5	97	1.9	5,182
1989	4,444	83.2	811	15.2	88	1.6	5,343
1990	4,564	83.3	829	15.1	88	1.6	5,481
Undergraduate	3,883	92.9	237	5.7	62	1.5	4,182
Graduate	540	55.4	411	42.2	23	2.4	974
Professional	141	43.4	181	55.7	3	0.9	325
1991	4,487	83.3	801	14.9	97	1.8	5,385
Undergraduate	3,747	92.8	230	5.7	62	1.5	4,039
Graduate	585	57.1	407	39.7	33	3.2	1,025
Professional	155	48.3	164	51.1	2	0.6	321
1992	4,747	83.8	806	14.2	114	2.0	5,667
Undergraduate	4,024	92.7	250	5.8	65	1.5	4,339
Graduate	577	56.2	402	39.1	48	4.7	1,027
Professional	146	48.5	154	51.2	1	0.3	301
1993	4,761	84.5	789	14.0	85	1.5	5,635
Undergraduate	4,012	92.9	255	5.9	51	1.2	4,318
Graduate	588	57.8	399	39.2	31	3.0	1,018
Professional	161	53.8	135	45.2	3	1.0	299
1994	4,761	84.2	779	13.8	115	2.0	5,655
Undergraduate	3,924	92.6	246	5.8	69	1.6	4,239
Graduate	669	60.8	388	35.3	43	3.9	1,100
Professional	168	53.2	145	45.9	3	0.9	316
1995	4,551	83.2	807	14.8	112	2.0	5,470
Undergraduate	3,704	91.8	269	6.7	61	1.5	4,034
Graduate	682	61.8	377	34.2	44	4.0	1,103
Professional	165	49.5	161	48.3	7	2.1	333

SOURCE: OE Form 23-2.3 Fall Enrollment and Compliance Report of Institutions of Higher Education



## Geographic Origin

By Region, 1988 - 1995

GEOGRAPHIC ORIGIN		1988	1989	1990	1991	1992	1993	1994	1995
Durham County	N	1,222	1,158	1,169	1,190	1,270	1,199	1,198	1,241
	%	24	22	21	22	22	21	21	23
Adjacent Counties*	N	890	938	922	880	960	987	1,038	1,058
	%	17	18	16	16	17	18	18	19
Other N.C. Counties	N	2,324	2,440	2,630	2,616	2,721	2,665	2,700	2,509
	%	45	46	48	49	48	47	48	46
Out-of-State	N	687	755	721	655	657	723	665	619
	%	13	14	13	12	12	13	12	11
U.S. Territories	N	6	2	2	3	3	2		2
	%	<1	<1	<1	<1	<1	<1		<1
Foreign Countries	N	53	50	37	41	56	59	54	41
	%	1	1	1	1	1	1	1	1
Unknown	N								
	%								
<b>TOTALS</b>		<b>5,182</b>	<b>5,343</b>	<b>5,481</b>	<b>5,385</b>	<b>5,667</b>	<b>5,635</b>	<b>5,655</b>	<b>5,470</b>

\* Adjacent Counties: Chatham, Granville, Orange, Person, Wake

SOURCE: NCHED A-1.3 Home Base of Students

## Geographic Origin

### By North Carolina County

COUNTY	#	COUNTY	#	COUNTY	#	COUNTY	#	COUNTY	#
Alamance	50	Chowan	6	Guilford	135	Mitchell	1	Rutherford	7
Alexander	2	Clay	0	Halifax	71	Montgomery	2	Sampson	29
Alleghany	1	Cleveland	25	Harnett	34	Moore	36	Scotland	29
Anson	11	Columbus	41	Haywood	2	Nash	52	Stanley	8
Ashe	1	Craven	41	Henderson	9	New Hanover	70	Stokes	0
Avery	0	Cumberland	202	Hertford	21	Northampton	33	Surry	13
Beaufort	20	Currituck	2	Hoke	15	Onslow	35	Swain	1
Bertie	21	Dare	1	Hyde	0	Orange	194	Transylvania	2
Bladen	12	Davidson	24	Iredell	11	Pamlico	3	Tyrrell	6
Brunswick	28	Davie	4	Jackson	1	Pasquotank	24	Union	23
Buncombe	28	Duplin	49	Johnston	34	Pender	18	Vance	63
Burke	4	Durham	1241	Jones	7	Perquimans	5	Wake	671
Cabarrus	19	Edgecombe	79	Lee	25	Person	58	Warren	55
Caldwell	1	Forsyth	97	Lenoir	44	Pitt	65	Washington	18
Camden	2	Franklin	38	Lincoln	2	Polk	0	Watauga	0
Carteret	12	Gaston	29	McDowell	4	Randolph	9	Wayne	88
Caswell	17	Gates	9	Macon	0	Richmond	23	Wilkes	2
Catawba	16	Graham	2	Madison	4	Robeson	68	Wilson	53
Chatham	38	Granville	97	Martin	41	Rockingham	25	Yadkin	0
Cherokee	0	Greene	9	Mecklenburg	253	Rowan	27	Yancey	0
								<b>TOTAL</b>	<b>4808</b>

## Geographic Origin

### By State

STATE	#	STATE	#	STATE	#	STATE	#	STATE	#
Alabama	3	Hawaii	0	Michigan	11	North Carolina	4808	Utah	1
Alaska	0	Idaho	0	Minnesota	1	North Dakota	0	Vermont	0
Arizona	1	Illinois	7	Mississippi	1	Ohio	13	Virginia	92
Arkansas	0	Indiana	6	Missouri	4	Oklahoma	0	Washington	1
California	13	Iowa	0	Montana	0	Oregon	0	West Virginia	3
Colorado	1	Kansas	2	Nebraska	2	Pennsylvania	23	Wisconsin	2
Connecticut	18	Kentucky	3	Nevada	0	Rhode Island	0	Wyoming	0
Delaware	5	Louisiana	2	New Hampshire	0	South Carolina	36	U.S. Territories	2
DC	40	Maine	0	New Jersey	47	South Dakota	0	Foreign Countries	41
Florida	13	Maryland	109	New Mexico	0	Tennessee	6	Unknown	0
Georgia	26	Massachusetts	14	New York	112	Texas	1		
								<b>TOTAL</b>	<b>5470</b>

SOURCE: NCHED A-1.3 Home Base of Students, Fall 1995

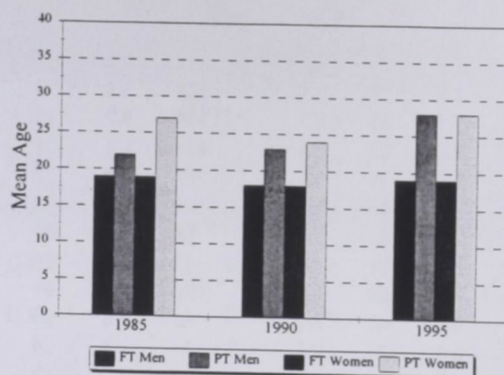
# Age Characteristics

Average Age, 1985 - 1995

## First-Time Freshmen

Year	MEN		WOMEN		TOTAL		Total Means
	Full-Time	Part-Time	Full-Time	Part-Time	Full-Time	Part-Time	
1985	19	22	19	27	19	25	19
1986	19	23	19	29	19	27	19
1987	19	20	19	21	19	20	19
1988	18	21	18	25	19	23	19
1989	18	21	18	21	18	21	18
1990	18	23	18	24	19	24	19
1991	19	24	18	25	19	25	19
1992	19	19	18	26	19	24	19
1993	19	24	18	30	19	25	19
1994	19	24	19	25	19	25	19
1995	19	28	19	28	19	28	20

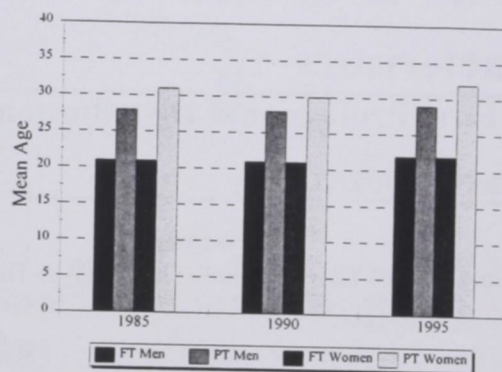
First-Time Freshmen



## Undergraduates

YEAR	MEN		WOMEN		TOTAL		Total Means
	Full-Time	Part-Time	Full-Time	Part-Time	Full-Time	Part-Time	
1985	21	28	21	31	21	30	22
1986	21	30	21	32	21	32	24
1987	21	27	21	30	21	29	23
1988	21	28	21	30	21	29	23
1989	20	27	20	29	20	28	21
1990	21	28	21	30	21	29	23
1991	22	28	21	30	22	29	23
1992	22	27	21	30	22	29	23
1993	22	27	22	31	22	29	23
1994	22	29	22	31	22	30	24
1995	22	29	22	32	22	31	24

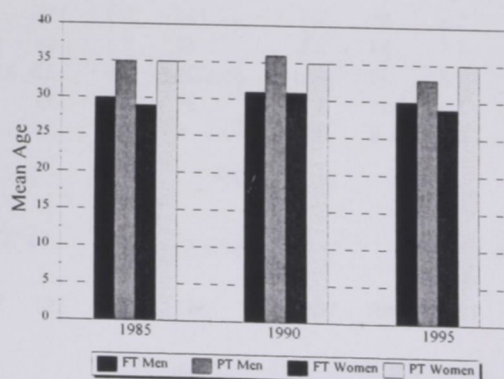
Undergraduates



## Graduate & First Professionals

YEAR	MEN		WOMEN		TOTAL		Total Means
	Full-Time	Part-Time	Full-Time	Part-Time	Full-Time	Part-Time	
1985	30	35	29	35	30	35	33
1986	30	34	29	35	30	35	33
1987	30	35	29	36	30	36	34
1988	30	35	30	35	30	35	34
1989	29	34	30	35	30	35	33
1990	31	36	31	35	31	35	34
1991	30	35	30	36	30	36	34
1992	31	36	29	36	30	36	34
1993	30	35	29	35	29	35	32
1994	30	34	29	35	29	35	32
1995	30	33	29	35	30	34	32

Graduate & First Professional



SOURCE: Student Data Files

## Age Characteristics

### Undergraduate Distribution

AGE	IN-STATE STUDENTS								OUT-OF-STATE STUDENTS							
	Men				Women				Men				Women			
	Full-Time		Part-Time		Full-Time		Part-Time		Full-Time		Part-Time		Full-Time		Part-Time	
	N	%	N	%	N	%	N	%	N	%	N	%	N	%	N	%
Less than 18	7	0.2			14	0.3	1	<.1	7	0.2	1	<.1	9	0.2		
18	111	2.8	2	<.1	223	5.5	3	0.1	33	0.8			44	1.1	1	<.1
19	143	3.5	13	0.3	330	8.2	15	0.4	41	1.0			59	1.5	3	<.1
20	142	3.5	22	0.5	326	8.1	21	0.5	31	0.8	2	0.0	77	1.9	3	<.1
21	154	3.8	21	0.5	251	6.2	22	0.5	30	0.7	3	0.1	63	1.6	1	<.1
22	110	2.7	16	0.4	162	4.0	28	0.7	19	0.5	5	0.1	18	0.4	4	0.1
23	79	2.0	25	0.6	88	2.2	30	0.7	8	0.2	2	0.0	8	0.2	4	0.1
24	70	1.7	21	0.5	47	1.2	28	0.7	8	0.2	5	<.1	5	0.1	1	<.1
25-30	120	3.0	68	1.7	156	3.9	99	2.5	15	0.4	4	0.1	9	0.2	2	<.1
31-35	34	0.8	47	1.2	64	1.6	80	2.0	1	<.1			4	0.1		
36-40	16	0.4	24	0.6	46	1.1	59	1.5	1	<.1			1	<.1		
41-50	13	0.3	16	0.4	32	0.8	72	1.8	1	<.1						
51-64	2	<.1	4	0.1	6	0.1	15	0.4							1	<.1
65 and over			1	<.1												
Unknown							1	<.1								
MEAN AGE OF UNDERGRADUATES - 24																
TOTALS	1,001	24.8	280	6.9	1,745	43.3	474	11.8	195	4.8	22	0.5	297	7.4	20	0.5

## Age Characteristics

### Graduate & First Professional Distribution

AGE	IN-STATE STUDENTS								OUT-OF-STATE STUDENTS							
	Men				Women				Men				Women			
	Full-Time		Part-Time		Full-Time		Part-Time		Full-Time		Part-Time		Full-Time		Part-Time	
	N	%	N	%	N	%	N	%	N	%	N	%	N	%	N	%
Less than 18																
18																
19																
20																
21			1	<.1	3	0.2	1	<.1					1	<.1		
22	8	0.6	3	0.2	16	1.1	15	0.1	2	0.1	2	0.1	9	0.6	1	<.1
23	13	0.9	6	0.4	34	2.4	18	1.0	7	0.5	1	<.1	11	0.8	2	0.1
24	26	1.8	10	0.7	33	2.3	35	1.3	7	0.5			6	0.4		
25-30	87	6.1	65	4.5	134	9.3	155	2.4	9	0.6	8	0.6	24	1.7	12	0.8
31-35	21	1.5	54	3.8	47	3.3	89	10.8	9	0.6	2	0.1	7	0.5		
36-40	25	1.7	30	2.1	28	1.9	82	6.2	2	0.1	1	<.1			1	<.1
41-50	23	1.6	31	2.2	39	2.7	133	5.7	1	<.1	1	<.1			1	<.1
51-64	5	0.3	8	0.6	8	0.6	22	9.3							1	<.1
65 and over																
Unknown																
TOTALS	208	14.5	208	14.5	342	23.8	550	38.3	37	2.6	15	1.0	59	4.1	17	1.2

SOURCE: NCHED A-1.6 Survey of Headcount by Age Fall 1995

# Academic Departments and Programs

## Undergraduate Enrollment by Field of Study

COLLEGE OF ARTS & SCIENCES	1985		1990		1995	
	N	%	N	%	N	%
Department of Art	78	2.1	76	1.8	62	1.5
Department of Biology	143	3.9	195	4.7	285	7.1
Department of Chemistry	28	0.8	38	0.9	64	1.6
Department of Criminal Justice	45	1.2	228	5.5	332	8.2
Department of Dramatic Arts	24	0.6	29	0.7	23	0.6
Department of English	124	3.3	159	3.8	227	5.6
Department of Geography	15	0.4	19	0.5	8	0.2
Department of Health Education	28	0.8	39	0.9	45	1.1
Department of History						
History	23	0.6	58	1.4	104	2.6
Social Sciences, General	3	0.1	3	0.1	4	0.1
Department of Human Sciences						
Clothing and Textiles	1	<.1	37	0.9	23	0.6
Foods and Nutrition	--	--	11	0.3	28	0.7
Human Sciences, General	45	1.2	39	0.9	72	1.8
Department of Mathematics & Computer Science						
Mathematics, General	80	2.2	85	2.0	74	1.8
Computer & Information Science	22	0.6	207	4.9	94	2.3
Department of Modern Foreign Languages						
French	1	<.1	3	0.1	4	0.1
Spanish	1	<.1	5	0.1	10	0.2
German	1	<.1	--	--	--	--
Department of Music	57	1.5	54	1.3	51	1.3
Department of Nursing	482	13.0	60	1.4	141	3.5
Department of Philosophy	12	0.3	2	<.1	1	<.1
Department of Physical Education						
Parks and Recreation	24	0.6	27	0.6	39	1.0
Physical Education	67	1.8	40	1.0	51	1.3
Social Work, Help Services	--	--	--	--	--	--
Department of Physics	29	0.8	38	0.9	24	0.6
Department of Political Science & Government	622	16.8	486	11.6	380	9.4
Department of Psychology	70	1.9	127	3.0	171	4.2
Department of Sociology	67	1.8	99	2.4	104	2.6
<b>TOTAL ARTS &amp; SCIENCES</b>	<b>2,092</b>	<b>56.4</b>	<b>2,164</b>	<b>51.7</b>	<b>2,421</b>	<b>60.0</b>

# Academic Departments and Programs

## Undergraduate Enrollment by Field of Study (Continued)

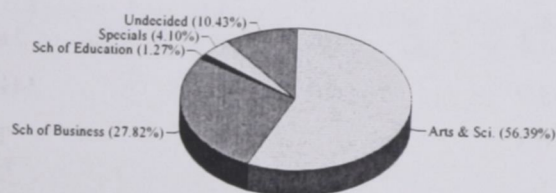
	1985		1990		1995	
	N	%	N	%	N	%
<b>SCHOOL OF BUSINESS</b>						
Accounting	193	5.2	90	2.2	90	2.2
Business Economics	8	0.2	1	<.1	2	<.1
Business Management and Administration	781	21.1	199	4.8	191	4.7
Business, Commerce & Distributive Education*	50	1.3	32	0.8	--	--
<b>TOTAL SCHOOL OF BUSINESS</b>	<b>1,032</b>	<b>27.8</b>	<b>322</b>	<b>7.7</b>	<b>283</b>	<b>7.0</b>
<b>SCHOOL OF EDUCATION</b>						
Elementary Education, General	47	1.3	55	1.3	24	0.6
Middle Grades Education**	--	---	1	<.1	---	---
<b>TOTAL SCHOOL OF EDUCATION</b>	<b>47</b>	<b>1.3</b>	<b>56</b>	<b>1.3</b>	<b>24</b>	<b>0.6</b>
<b>SPECIALS</b>	<b>152</b>	<b>4.1</b>	<b>63</b>	<b>1.5</b>	<b>74</b>	<b>1.8</b>
<b>UNDECIDED</b>	<b>387</b>	<b>10.4</b>	<b>1,577</b>	<b>37.7</b>	<b>1,232</b>	<b>30.5</b>
<b>TOTALS</b>	<b>3,710</b>	<b>100</b>	<b>4,182</b>	<b>100</b>	<b>4,034</b>	<b>100</b>

SOURCE: Student Data Files

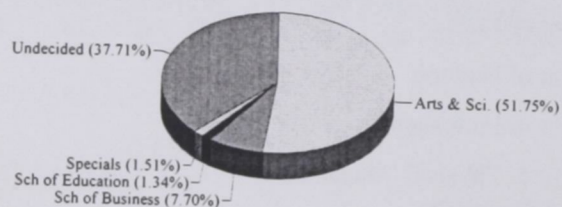
\*Program Discontinued

\*\*New Program

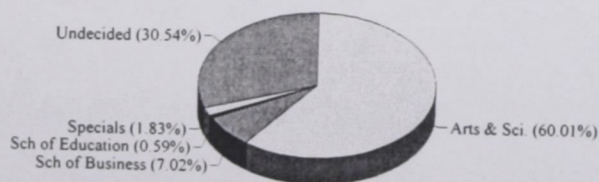
Undergraduate Enrollment, 1985



Undergraduate Enrollment, 1990



Undergraduate Enrollment, 1995



# Academic Departments and Programs

## Undergraduate Enrollment by Field of Study and Race

### COLLEGE OF ARTS & SCIENCES

	White	Black	Amer. Indian	Asian	Hispanic	Other
Department of Art	5	57				
Department of Biology	14	268		1	2	
Department of Chemistry	4	60				
Department of Criminal Justice	12	319	1			
Department of Dramatic Arts	2	21				
Department of English	13	212			2	
Department of Geography	1	6		1		
Department of Health Education	2	43				
Department of History						
History	10	93		1		
Social Sciences, General		4				
Department of Human Sciences						
Clothing and Textiles		22			1	
Foods and Nutrition	3	24				1
Human Sciences, General	8	64				
Department of Mathematics & Computer Science						
Mathematics, General	5	67			1	
Computer & Information Science	9	81		3	1	
Department of Modern Foreign Languages						
French	1	3				
Spanish		9			1	
German						
Department of Music	6	45				
Department of Nursing	41	97		3		
Department of Philosophy		1				
Department of Physical Education						
Parks and Recreation	1	39				
Physical Education	4	46				
Social Work, Help Services					1	
Department of Physics	2	21				
Department of Political Science & Government	8	370	1		1	1
Department of Psychology	9	161	1			
Department of Sociology	9	94	1			
TOTAL ARTS & SCIENCES	169	2,227	4	10	10	2

# Academic Departments and Programs

## Undergraduate Enrollment by Field of Study and Race (Continued)

	White	Black	Amer. Indian	Asian	Hispanic	Other
<b>SCHOOL OF BUSINESS</b>						
Accounting		88			2	
Business Economics		2				
Business Management and Administration	4	187				
Business, Commerce & Distributive Education*						
<b>TOTAL SCHOOL OF BUSINESS</b>	4	277			2	
<b>SCHOOL OF EDUCATION</b>						
Elementary Education, General	3	20			1	
Middle Grades Education**						
<b>TOTAL SCHOOL OF EDUCATION</b>	3	20			1	
<b>SPECIALS</b>	24	49	1			
<b>UNDECIDED</b>	69	1144	3	10	6	
<b>TOTALS</b>	269	3,716	8	20	19	2

SOURCE: Student Data Files

\*Program Discontinued

\*\*New Program



# Academic Departments and Programs

## Graduate Enrollment by Field of Study

COLLEGE OF ARTS & SCIENCES	1985		1990		1995	
	N	%	N	%	N	%
Department of Biology	23	2.3	13	1.0	29	2.0
Department of Chemistry						
Chemistry	11	1.1	4	0.3	8	0.6
Earth Sciences	--	--	--	--	3	0.2
Department of Criminal Justice	11	1.1	25	1.9	44	3.1
Department of English	16	1.6	16	1.2	15	1.0
Department of History						
History	34	3.4	12	0.9	31	2.2
Department of Home Economics	28	2.8	17	1.3	33	2.3
Department of Mathematics & Computer Science						
Mathematics, General	24	2.4	10	0.8	6	0.4
Department of Modern Foreign Languages						
French	2	0.2	2	0.2	1	0.1
Department of Music	11	1.1	2	0.2	6	0.4
Department of Physical Education						
Physical Education	22	2.2	15	1.2	20	1.4
Parks and Recreation	7	0.7	2	0.2	8	0.6
Department of Public Administration	47	4.7	63	4.8	91	6.3
Department of Psychology	29	2.9	37	2.8	64	4.5
Department of Sociology	5	0.5	7	0.5	9	0.6
<b>TOTAL ARTS &amp; SCIENCES</b>	<b>270</b>	<b>27.3</b>	<b>225</b>	<b>17.3</b>	<b>368</b>	<b>25.6</b>
<b>SCHOOL OF BUSINESS</b>						
Business, Commerce & Distributive Education	6	0.6	6	0.5	--	--
Business Management and Administration	17	1.7	28	2.2	29	2.0
<b>TOTAL SCHOOL OF BUSINESS</b>	<b>23</b>	<b>2.3</b>	<b>34</b>	<b>2.6</b>	<b>29</b>	<b>2.0</b>
<b>SCHOOL OF EDUCATION</b>						
Special Education	26	2.6	36	2.8	43	3.0
Educational Administration & Supervision	45	4.5	40	3.1	38	2.6
Educational Media	7	0.7	18	1.4	21	1.5
Elementary Education, General	80	8.1	28	2.2	6	0.4
Middle Grades Education	6	0.6	5	0.4	2	0.1
Speech Pathology & Audiology	7	0.7	24	1.8	55	3.8
Student Personnel, Guidance & Counseling	73	7.4	101	7.8	120	8.4
<b>TOTAL SCHOOL OF EDUCATION</b>	<b>244</b>	<b>24.65</b>	<b>252</b>	<b>19.4</b>	<b>285</b>	<b>19.85</b>

# Academic Departments and Programs

## Graduate Enrollment by Field of Study (Continued)

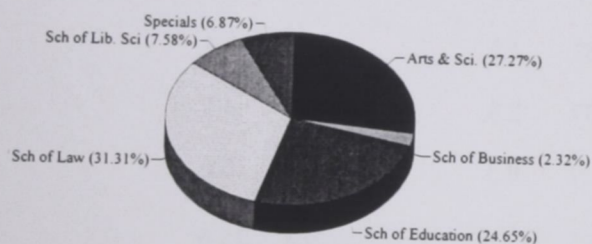
	1985		1990		1995	
	N	%	N	%	N	%
<b>SCHOOL OF LAW</b>						
Juris Doctor's	310	31.3	320	24.6	333	23.2
<b>SCHOOL OF LIBRARY &amp; INFORMATION SCIENCES</b>						
Library Science, General	75	7.6	136	10.5	163	11.4
Information Sciences & Systems**			2	0.2	11	0.8
<b>TOTAL SCH. OF LIBRARY &amp; INFO. SCI.</b>	<b>75</b>	<b>7.6</b>	<b>138</b>	<b>10.6</b>	<b>174</b>	<b>12.12</b>
<b>SPECIALS</b>	<b>68</b>	<b>6.9</b>	<b>330</b>	<b>25.4</b>	<b>247</b>	<b>17.2</b>
<b>TOTALS</b>	<b>990</b>	<b>100</b>	<b>1299</b>	<b>100</b>	<b>1436</b>	<b>100</b>

SOURCE: Student Data Files

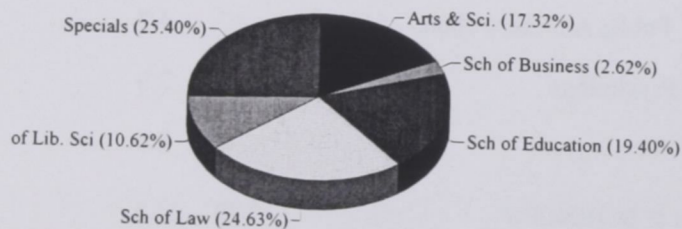
\* Program Discontinued

\*\* New Program as of 2/89

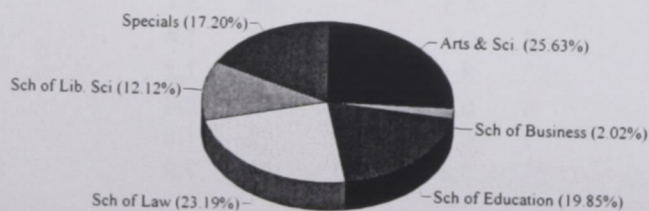
Graduate Enrollment, 1985



Graduate Enrollment, 1990



Graduate Enrollment, 1995



# Academic Departments and Programs

## Graduate Enrollment by Field of Study and Race

COLLEGE OF ARTS & SCIENCES	White	Black	Amer. Indian	Asian	Hispanic	Other
Department of Biology	1	28				
Department of Chemistry	2	6				
Department of Criminal Justice	14	30				
Department of Earth Sciences	0	3				
Department of English	1	11	1	2		
Department of History						
History	6	25				
Department of Human Sciences						
Human Sciences	4	29				
Department of Mathematics & Computer Science						
Mathematics, General	1	5				
Department of Modern Foreign Languages						
French		1				
Department of Music	2	4				
Department of Physical Education						
Parks and Recreation	3	5				
Physical Education	5	15				
Public Administration	2	89				
Department of Psychology	14	50				
Department of Sociology	1	8				
<b>TOTAL ARTS &amp; SCIENCES</b>	<b>56</b>	<b>309</b>		<b>2</b>		
<b>SCHOOL OF BUSINESS</b>						
Business Management and Administration	9	20				
Business, Commerce & Distributive Education*	9					
<b>TOTAL SCHOOL OF BUSINESS</b>	<b>18</b>	<b>20</b>				

# Academic Departments and Programs

## Graduate Enrollment by Field of Study and Race (Continued)

SCHOOL OF EDUCATION	White	Black	Amer. Indian	Asian	Hispanic	Other
Special Education	19	24				
Educational Administration & Services	9	29				
Educational Media	1	20				
Elementary Education, General	3	3				
Middle Grades Education**	2					
Speech Pathology and Audiology	33	22				
Student Personnel, Guidance Counseling	47	71	1	1	1	
<b>TOTAL SCHOOL OF EDUCATION</b>	<b>114</b>	<b>169</b>		<b>1</b>		
SCHOOL OF LAW	161	166	3	1	2	
SCHOOL OF LIBRARY SCIENCE						
Library Science	109	36	6	10	2	
Information Science	3	6	1	1		
<b>TOTAL SCHOOL OF LIBRARY SCIENCE</b>	<b>112</b>	<b>42</b>		<b>11</b>	<b>2</b>	
Specials	91	150	1	2	3	
<b>TOTALS</b>	<b>543</b>	<b>856</b>	<b>13</b>	<b>17</b>	<b>7</b>	

SOURCE: Student Data Files

\*Program Discontinued

\*\*New Program

*Facts About  
Faculty and Staff*

# General Characteristics of Faculty

## Instructional Staffing Patterns by Academic Unit and Rank for Full and Part-Time Faculty

Academic Unit And Rank	1985	1990	1995		TOTAL	FTE
			FULL TIME	PART TIME		
<b>Art</b>						
Professor		1	2		2	2.0
Associate Professor	4	4	3		3	3.0
Assistant Professor	4	1	1		1	1.0
Instructor	2					
Other Faculty	2	5		4	4	1.4
<b>Total</b>	<b>12</b>	<b>11</b>	<b>6</b>	<b>4</b>	<b>10</b>	<b>7.4</b>

<b>Biology</b>						
Professor	3	3	3		3	3.0
Associate Professor	7	7	4		4	4.0
Assistant Professor	3	1	4		4	4.0
Instructor						
Other Faculty	5	6	3	8	11	1.1
<b>Total</b>	<b>18</b>	<b>17</b>	<b>14</b>	<b>8</b>	<b>22</b>	<b>12.1</b>

<b>Business</b>						
Professor	3	4	8		8	8.0
Associate Professor	10	10	10		10	10.0
Assistant Professor	19	15	9		9	9.0
Instructor	2	3	1		1	1.0
Other Faculty	5	14	6	13	19	7.3
<b>Total</b>	<b>39</b>	<b>46</b>	<b>34</b>	<b>13</b>	<b>47</b>	<b>35.3</b>

<b>Chemistry</b>						
Professor	3	3	3		3	3.0
Associate Professor	2	1	1		1	1.0
Assistant Professor	2	1	1		1	1.0
Instructor						
Other		3		3	3	0.4
<b>Total</b>	<b>7</b>	<b>8</b>	<b>5</b>	<b>3</b>	<b>8</b>	<b>5.4</b>

<b>Criminal Justice*</b>						
Professor			1		1	1.0
Associate Professor			2		2	2.0
Assistant Professor			1		1	1.0
Instructor						
Other Faculty			1	4	5	1.5
<b>Total</b>			<b>5</b>	<b>4</b>	<b>9</b>	<b>5.5</b>

<b>Dramatic Arts</b>						
Professor	1	1	2		2	2.0
Associate Professor	2	4	2		2	2.0
Assistant Professor	2					
Instructor						
Other Faculty	1	1	1	1	2	1.1
<b>Total</b>	<b>6</b>	<b>6</b>	<b>5</b>	<b>1</b>	<b>6</b>	<b>5.1</b>

Academic Unit And Rank	1985	1990	1995		TOTAL	FTE
			FULL TIME	PART TIME		
<b>Education</b>						
Professor	8	7	9		9	9.0
Associate Professor	8	5	7		7	7.0
Assistant Professor	8	7	12		12	12.0
Instructor		1				
Other Faculty	3	19	4	7	11	5.2
<b>Total</b>	<b>27</b>	<b>39</b>	<b>32</b>	<b>7</b>	<b>39</b>	<b>33.2</b>

<b>English</b>						
Professor	4	4	4		4	4.0
Associate Professor	7	5	8		8	8.0
Assistant Professor	9	7	7		7	7.0
Instructor	1	3	3		3	3.0
Other Faculty	1	11	4	5	9	5.5
<b>Total</b>	<b>22</b>	<b>30</b>	<b>26</b>	<b>5</b>	<b>31</b>	<b>27.5</b>

<b>Geography</b>						
Professor	1	1	1		1	1.0
Associate Professor	3	3	5		5	5.0
Assistant Professor	1	1				
Instructor						
Other Faculty	1	2		1	1	0.1
<b>Total</b>	<b>6</b>	<b>7</b>	<b>6</b>	<b>1</b>	<b>7</b>	<b>6.1</b>

<b>Health Education</b>						
Professor	1					
Associate Professor	1	1				
Assistant Professor	1	1	3		3	3.0
Instructor	2	2	1		1	1.0
Other Faculty	1	4	3	1	4	3.1
<b>Total</b>	<b>6</b>	<b>8</b>	<b>7</b>	<b>1</b>	<b>8</b>	<b>7.1</b>

<b>History</b>						
Professor	4	5	3		3	3.0
Associate Professor	3					
Assistant Professor	4	5	3		3	3.0
Instructor						
Other Faculty	2	3	1	5	6	2.5
<b>Total</b>	<b>13</b>	<b>13</b>	<b>7</b>	<b>5</b>	<b>12</b>	<b>8.5</b>

<b>Human Sciences</b>						
Professor			1		1	1.0
Associate Professor	2	3	4		4	4.0
Assistant Professor	6	4	2		2	2.0
Instructor	2	2				
Other Faculty	3	5	6	4	10	7.1
<b>Total</b>	<b>13</b>	<b>14</b>	<b>13</b>	<b>4</b>	<b>17</b>	<b>14.1</b>

# General Characteristics of Faculty

## Instructional Staffing Patterns by Academic Unit and Rank for Full and Part-Time Faculty (Continued)

Academic Unit And Rank	1985	1990	1995		TOTAL	FTE
			FULL TIME	PART TIME		
<b>Law</b>						
Professor	7	7	9		9	9.0
Associate Professor	2	5	5		5	5.0
Assistant Professor	5	1	2		2	2.0
Instructor	1					
Other Faculty	8	12	6	6	12	7.0
<b>Total</b>	<b>23</b>	<b>25</b>	<b>22</b>	<b>6</b>	<b>28</b>	<b>23.0</b>

Academic Unit And Rank	1985	1990	1995		TOTAL	FTE
			FULL TIME	PART TIME		
<b>Library &amp; Information Sciences</b>						
Professor	2	2	2		2	2.0
Associate Professor	2	3	2		2	2.0
Assistant Professor	3	1				
Instructor						
Other Faculty	3	3		8	8	3.0
<b>Total</b>	<b>10</b>	<b>9</b>	<b>4</b>	<b>8</b>	<b>12</b>	<b>7.0</b>

Academic Unit And Rank	1985	1990	1995		TOTAL	FTE
			FULL TIME	PART TIME		
<b>Mathematics &amp; Computer Science</b>						
Professor	1	1	1		1	1.0
Associate Professor	5	5	6		6	6.0
Assistant Professor	3	5	6		6	6.0
Instructor	4	2	1		1	1.0
Other Faculty	4	8	2	6	8	4.1
<b>Total</b>	<b>17</b>	<b>21</b>	<b>16</b>	<b>6</b>	<b>22</b>	<b>18.1</b>

Academic Unit And Rank	1985	1990	1995		TOTAL	FTE
			FULL TIME	PART TIME		
<b>Modern Foreign Languages</b>						
Professor	1	1	2		2	2.0
Associate Professor	5	3	2		2	2.0
Assistant Professor	5	3	7		7	7.0
Instructor						
Other Faculty	3	5	2	7	9	3.0
<b>Total</b>	<b>14</b>	<b>12</b>	<b>13</b>	<b>7</b>	<b>20</b>	<b>14.0</b>

Academic Unit And Rank	1985	1990	1995		TOTAL	FTE
			FULL TIME	PART TIME		
<b>Music</b>						
Professor	2	2	2		2	2.0
Associate Professor	3	2	1		1	1.0
Assistant Professor	5	1	1		1	1.0
Instructor	1	1				
Other Faculty	3	5	8	3	11	8.3
<b>Total</b>	<b>14</b>	<b>11</b>	<b>12</b>	<b>3</b>	<b>15</b>	<b>12.3</b>

Academic Unit And Rank	1985	1990	1995		TOTAL	FTE
			FULL TIME	PART TIME		
<b>Nursing</b>						
Professor		1	1		1	1.0
Associate Professor	3	1	3		3	3.0
Assistant Professor	11	5	4		4	4.0
Instructor	1		3		3	3.0
Other Faculty	4	9	3	8	11	1.4
<b>Total</b>	<b>19</b>	<b>16</b>	<b>14</b>	<b>8</b>	<b>22</b>	<b>12.4</b>

Academic Unit And Rank	1985	1990	1995		TOTAL	FTE
			FULL TIME	PART TIME		
<b>Philosophy</b>						
Professor						
Associate Professor	1	1				
Assistant Professor	1	1	1		1	1.0
Instructor						
Other Faculty						
<b>Total</b>	<b>2</b>	<b>2</b>	<b>1</b>		<b>1</b>	<b>1.0</b>

Academic Unit And Rank	1985	1990	1995		TOTAL	FTE
			FULL TIME	PART TIME		
<b>Physical Education</b>						
Professor	1					
Associate Professor	4	4	6		6	6.0
Assistant Professor	9	8	6		6	6.0
Instructor	2	1				
Other Faculty	3	4	5	3	8	6.0
<b>Total</b>	<b>19</b>	<b>17</b>	<b>17</b>	<b>3</b>	<b>20</b>	<b>18.0</b>

Academic Unit And Rank	1985	1990	1995		TOTAL	FTE
			FULL TIME	PART TIME		
<b>Physics</b>						
Professor	4	4	4		4	4.0
Associate Professor						
Assistant Professor						
Instructor						
Other Faculty	1	2	1		1	1.0
<b>Total</b>	<b>5</b>	<b>6</b>	<b>5</b>		<b>5</b>	<b>5.0</b>

Academic Unit And Rank	1985	1990	1995		TOTAL	FTE
			FULL TIME	PART TIME		
<b>Political Science*</b>						
Professor	2	4	1		1	1.0
Associate Professor	4	2	2		2	2.0
Assistant Professor	6	5	2		2	2.0
Instructor	2					
Other Faculty	4	10				
<b>Total</b>	<b>18</b>	<b>21</b>	<b>5</b>		<b>5</b>	<b>5.0</b>

Academic Unit And Rank	1985	1990	1995		TOTAL	FTE
			FULL TIME	PART TIME		
<b>Public Administration*</b>						
Professor						
Associate Professor			1		1	1.0
Assistant Professor			4		4	4.0
Instructor						
Other Faculty			1	6	7	1.9
<b>Total</b>			<b>6</b>	<b>6</b>	<b>12</b>	<b>6.9</b>

Academic Unit And Rank	1985	1990	1995		TOTAL	FTE
			FULL TIME	PART TIME		
<b>Psychology</b>						
Professor	1	1	1		1	1.0
Associate Professor	3	2	4		4	4.0
Assistant Professor	2	2	1		1	1.0
Instructor	1					
Other Faculty		1		3	3	0.4
<b>Total</b>	<b>7</b>	<b>6</b>	<b>6</b>	<b>3</b>	<b>9</b>	<b>6.4</b>

# General Characteristics of Faculty

## Instructional Staffing Patterns by Academic Unit and Rank for Full and Part-Time Faculty (Continued)

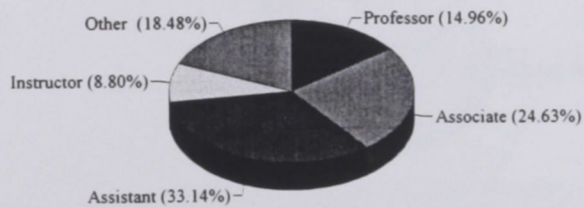
Academic Unit And Rank	1985	1990	1995		FTE	Academic Unit And Rank	1985	1990	1995		FTE		
			FULL TIME	PART TIME			FULL TIME	PART TIME	TOTAL	TOTAL			
<b>Sociology</b>						<b>SUMMARY</b>							
Professor	2	2	3		3	3.0	Professor	51	54	63	63	63.0	
Associate Professor	2	2	3		3	3.0	Associate	84	73	81	81	81.0	
Assistant Professor	4	4	2		2	2.0	Assistant Professor	113	79	79	79	79.0	
Instructor							Instructor	30	14	9	9	9.0	
Other Faculty							Other Faculty	63	133	57	106	163	78.6
<b>Total</b>	<b>8</b>	<b>8</b>	<b>8</b>		<b>8</b>	<b>8.0</b>	<b>Total</b>	<b>341</b>	<b>353</b>	<b>289</b>	<b>106</b>	<b>395</b>	<b>310.6</b>

\* Prior to 1992, data for Criminal Justice and Public Administration were reported in Political Science. Since 1992, data for Criminal Justice and Public Administration are reported in separate categories.

### Distribution of Rank for Full-Time Faculty

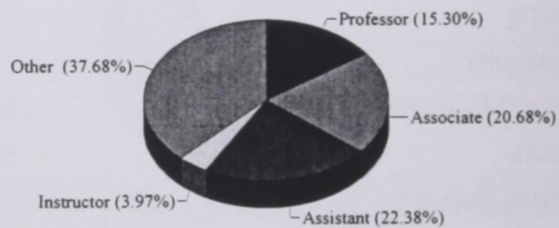
Distribution of Rank

1985



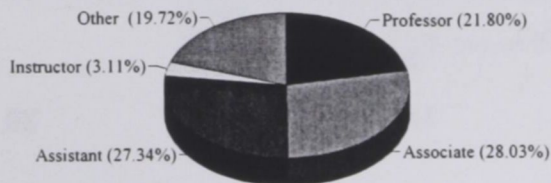
Distribution of Rank

1990



Distribution of Rank

1995





## General Characteristics of Faculty

### Highest Earned Degree for Full-Time Faculty by Academic Unit

Academic Unit	Doctorate	Master's	Professional	Bachelor's
Art	2	4		
Biology	12	2		
Chemistry	5	1		
Criminal Justice	3	1	1	
Dramatic Arts	3	2		
English	17	9		
Geography	6			
Health Education	3	4		
History	5	2		
Human Sciences	7	4		2
Mathematics & Computer Sci.	10	6		
Modern Foreign Languages	7	6		
Music	4	8		
Nursing	5	8		1
Philosophy				1
Physical Education	8	8		1
Physics	5			
Political Science	5			
Psychology	6			
Public Administration	6			
Sociology	8			
School of Business	22	10	1	1
School of Education	27	4		
School of Law		4	18	
School of Library & Information Sci.	4			
<b>Total</b>	<b>180</b>	<b>83</b>	<b>20</b>	<b>6</b>

SOURCE: Personnel Data File, Fall 1995

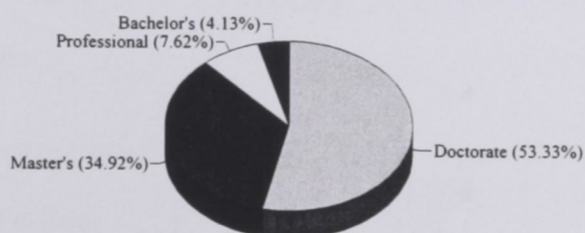
# General Characteristics of Faculty

## Summary of Highest Earned Degree for Full-Time Faculty

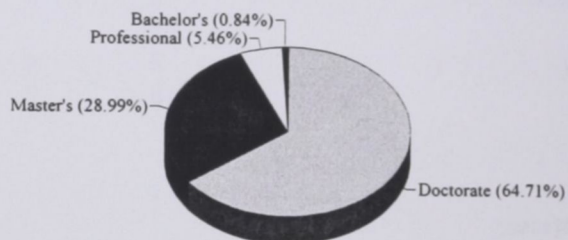
DEGREE	1985	1990	1995
	N	N	N
Doctorate	168	154	180
Master's	110	69	83
Professional	24	13	20
Bachelor's	13	2	6
Other	--	--	--
TOTAL	315	238	289

SOURCE: Personnel Data Files

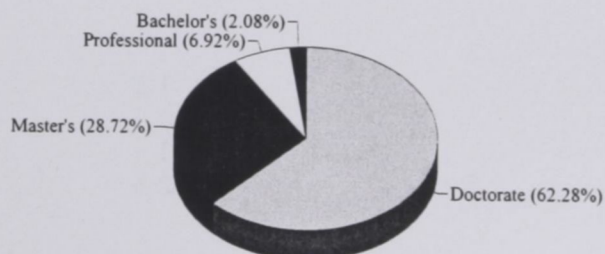
Highest Degree Earned, 1985



Highest Degree Earned, 1990



Highest Degree Earned, 1995



# General Characteristics of Faculty

## Race and Sex of Full-Time Faculty

Academic Unit & Rank	BLACK		WHITE		OTHER		TOTAL
	Men	Women	Men	Women	Men	Women	
<b>ART</b>							
Professor	1	1					2
Associate Professor	1						3
Assistant Professor	1			2			3
Instructor							1
Other Faculty							
<b>TOTAL</b>	<b>3</b>	<b>1</b>		<b>2</b>			<b>6</b>
<b>BIOLOGY</b>							
Professor	2		1				3
Associate Professor	1		2		1		4
Assistant Professor	1	1			1	1	4
Instructor							
Other Faculty	2	1					3
<b>TOTAL</b>	<b>6</b>	<b>2</b>	<b>3</b>		<b>2</b>	<b>1</b>	<b>14</b>
<b>BUSINESS</b>							
Professor	3	1	3		1		8
Associate Professor	3	2	3	2			10
Assistant Professor	6		2	1			9
Instructor	1						1
Other Faculty	2	4					6
<b>TOTAL</b>	<b>15</b>	<b>7</b>	<b>8</b>	<b>3</b>	<b>1</b>		<b>34</b>
<b>CHEMISTRY</b>							
Professor	1		2				3
Associate Professor					1		1
Assistant Professor			1				1
Instructor							
Other Faculty							
<b>TOTAL</b>	<b>1</b>		<b>3</b>		<b>1</b>		<b>5</b>
<b>CRIMINAL JUSTICE</b>							
Professor	1						1
Associate Professor	2						2
Assistant Professor			1				1
Instructor							
Other Faculty			1				1
<b>TOTAL</b>	<b>3</b>		<b>2</b>				<b>5</b>
<b>DRAMATIC ARTS</b>							
Professor		1	1				2
Associate Professor	1						2
Assistant Professor				1			2
Instructor							
Other Faculty	1						1
<b>TOTAL</b>	<b>2</b>	<b>1</b>	<b>1</b>	<b>1</b>			<b>5</b>

# General Characteristics

## Race and Sex of Full-Time Faculty (Continued)

Academic Unit & Rank	BLACK		WHITE		OTHER		TOTAL
	Men	Women	Men	Women	Men	Women	
<b>EDUCATION</b>							
Professor	1	3	1	2	2		9
Associate Professor	3	3	1				7
Assistant Professor	1	5	3	3			12
Instructor							
Other Faculty		1	1	2			4
<b>TOTAL</b>	<b>5</b>	<b>12</b>	<b>6</b>	<b>7</b>	<b>2</b>		<b>32</b>
<b>ENGLISH</b>							
Professor		1	1	2			4
Associate Professor	2	2	2	2			8
Assistant Professor	1	1	2	1		2	7
Instructor		3					3
Other Faculty		4					4
<b>TOTAL</b>	<b>3</b>	<b>11</b>	<b>5</b>	<b>5</b>		<b>2</b>	<b>26</b>
<b>GEOGRAPHY</b>							
Professor	1						1
Associate Professor	4		1				5
Assistant Professor							
Instructor							
Other Faculty							
<b>TOTAL</b>	<b>5</b>		<b>1</b>				<b>6</b>
<b>HEALTH EDUCATION</b>							
Professor							
Associate Professor							
Assistant Professor	1	1	1				3
Instructor		1					1
Other Faculty	1	1		1			3
<b>TOTAL</b>	<b>2</b>	<b>3</b>	<b>1</b>	<b>1</b>			<b>7</b>
<b>HISTORY</b>							
Professor	2	1					3
Associate Professor							
Assistant Professor	2						
Instructor						1	3
Other Faculty			1				1
<b>TOTAL</b>	<b>4</b>	<b>1</b>	<b>1</b>			<b>1</b>	<b>7</b>
<b>HUMAN SCIENCES</b>							
Professor		1					1
Associate Professor	1	3					4
Assistant Professor		2					2
Instructor							
Other Faculty	2	4					6
<b>TOTAL</b>	<b>3</b>	<b>10</b>					<b>13</b>

# General Characteristics

## Race and Sex of Full-Time Faculty (Continued)

Academic Unit & Rank	BLACK		WHITE		OTHER		TOTAL
	Men	Women	Men	Women	Men	Women	
<b>LAW</b>							
Professor	3	1	3	2			9
Associate Professor	1	2	1	1			5
Assistant Professor		2					2
Instructor							
Other Faculty	1	2	1	2			6
<b>TOTAL</b>	<b>5</b>	<b>7</b>	<b>5</b>	<b>5</b>			<b>22</b>
<b>LIBRARY &amp; INFORMATION SCIENCES</b>							
Professor	1		1				2
Associate Professor		1	1				2
Assistant Professor							
Instructor							
Other Faculty							
<b>TOTAL</b>	<b>1</b>	<b>1</b>	<b>2</b>				<b>4</b>
<b>MATHEMATICS &amp; COMPUTER SCIENCE</b>							
Professor	1						1
Associate Professor	2	1	3				6
Assistant Professor	1	1	3	1			6
Instructor		1					1
Other Faculty	2						2
<b>TOTAL</b>	<b>6</b>	<b>3</b>	<b>6</b>	<b>1</b>			<b>16</b>
<b>MODERN FOREIGN LANGUAGES</b>							
Professor	2						2
Associate Professor			1		1		2
Assistant Professor	1		1	4		1	7
Instructor							
Other Faculty		1		1			2
<b>TOTAL</b>	<b>3</b>	<b>1</b>	<b>2</b>	<b>5</b>	<b>1</b>	<b>1</b>	<b>13</b>
<b>MUSIC</b>							
Professor	1			1			2
Associate Professor		1					1
Assistant Professor		1					1
Instructor							
Other Faculty	7	1					8
<b>TOTAL</b>	<b>8</b>	<b>3</b>		<b>1</b>			<b>12</b>
<b>NURSING</b>							
Professor		1					1
Associate Professor		3					3
Assistant Professor		4					4
Instructor		1		2			3
Other Faculty	1	2					3
<b>TOTAL</b>	<b>1</b>	<b>11</b>		<b>2</b>			<b>14</b>

# General Characteristics

## Race and Sex of Full-Time Faculty (Continued)

Academic Unit & Rank	BLACK		WHITE		OTHER		TOTAL
	Men	Women	Men	Women	Men	Women	
<b>PHILOSOPHY</b>							
Professor							
Associate Professor							
Assistant Professor			1				1
Instructor							
Other Faculty							
<b>TOTAL</b>			1				1
<b>PHYSICAL EDUCATION</b>							
Professor							
Associate Professor	4			2			6
Assistant Professor	1	4	1				6
Instructor							
Other Faculty	1	1	1	1	1		5
<b>TOTAL</b>	6	5	2	3		1	17
<b>PHYSICS</b>							
Professor			3				4
Associate Professor					1		1
Assistant Professor							
Instructor							
Other Faculty							
<b>TOTAL</b>			3		1		5
<b>POLITICAL SCIENCE</b>							
Professor			1				1
Associate Professor	1		1				2
Assistant Professor	1		1				2
Instructor							
Other Faculty							
<b>TOTAL</b>	2		3				5
<b>PSYCHOLOGY</b>							
Professor	1						1
Associate Professor	3	1					4
Assistant Professor	1						1
Instructor							
Other Faculty							
<b>TOTAL</b>	5	1					6
<b>PUBLIC ADMINISTRATION</b>							
Professor							
Associate Professor	1						1
Assistant Professor	2	2					4
Instructor							
Other Faculty					1		1
<b>TOTAL</b>	3	2			1		6

## General Characteristics

### Race and Sex of Full-Time Faculty (Continued)

Academic Unit & Rank	BLACK		WHITE		OTHER		TOTAL
	Men	Women	Men	Women	Men	Women	
SOCIOLOGY							
Professor	1		2				3
Associate Professor	2		1				3
Assistant Professor		1				1	2
Instructor							
Other Faculty							
<b>TOTAL</b>	<b>3</b>	<b>1</b>	<b>3</b>			<b>1</b>	<b>8</b>

### Summary of Race and Sex by Academic Rank

Academic Rank	BLACK		WHITE		OTHER		TOTAL
	Men	Women	Men	Women	Men	Women	
Professor	22	11	19	7	4	---	63
Associate Professor	32	19	17	10	3	---	81
Assistant Professor	20	25	17	10	1	6	79
Instructor	1	6	---	2	---	---	9
Other Faculty	20	22	7	5	2	1	57
<b>TOTAL</b>	<b>95</b>	<b>83</b>	<b>60</b>	<b>34</b>	<b>10</b>	<b>7</b>	<b>289</b>

SOURCE: Personnel Data File, Fall 1995

# Tenure Status of Faculty

## By Academic Unit

Academic Unit	Tenured		On Tenure Track		Not On Track		TOTAL
		%		%		%	
Art	5	83.3	1	16.7			6
Biology	6	42.9	5	35.7	3	21.4	14
Business	23	67.6	5	14.7	6	17.6	34
Chemistry	4	80.0	1	20.0			5
Criminal Justice	3	60.0	1	20.0	1	20.0	5
Dramatic Arts	4	80.0			1	20.0	5
Education	12	37.5	15	46.9	5	15.6	32
English	12	46.2	7	26.9	7	26.9	26
Geography	5	83.3	1	16.7			6
Health Education	2	28.6	2	28.6	3	42.9	7
History	4	57.1	2	28.6	1	14.3	7
Human Sciences	3	23.1	4	30.8	6	46.2	13
Law	14	63.6	2	9.1	6	27.3	22
Library & Information Sciences	4	100.0					4
Mathematics & Computer Sci.	10	62.5	3	18.8	3	18.8	16
Modern Foreign Languages	7	53.8	4	30.8	2	15.4	13
Music	3	25.0	1	8.3	8	66.7	12
Nursing	4	28.6	7	50.0	3	21.4	14
Philosophy	1	100.0					1
Physical Education	7	41.2	5	29.4	5	29.4	17
Physics	4	80.0			1	20.0	5
Political Science	2	40.0	3	60.0			5
Public Administration			5	83.3	1	16.7	6
Psychology	4	66.7	2	33.3			6
Sociology	7	87.5	1	12.5			8
<b>SUMMARY</b>	<b>150</b>	<b>51.9</b>	<b>77</b>	<b>26.6</b>	<b>62</b>	<b>21.5</b>	<b>289</b>

NOTE: Data included in this table are for instructional faculty only. Those on leave are omitted.

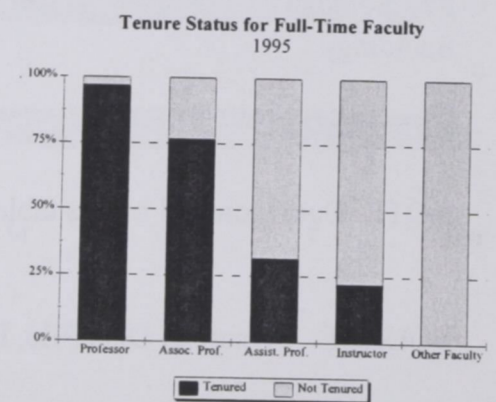
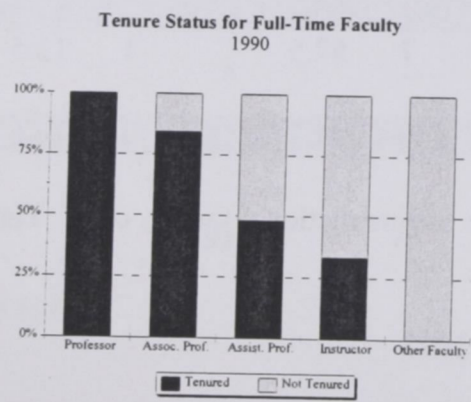
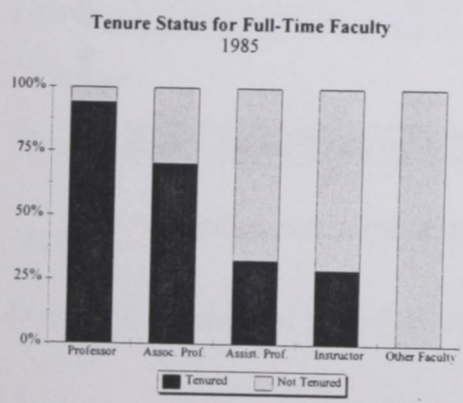
SOURCE: Personnel Data File, Fall 1995



# Tenure Status of Faculty

## By Rank and Sex

Year & Academic Rank	MEN		WOMEN			Grand Total	N Tenured	% Tenured	
	Total	N Tenured	% Tenured	Total	N Tenured				% Tenured
<b>1985</b>									
Professor	39	36	92%	12	12	100%	51	48	94%
Associate Professor	54	36	67%	30	23	77%	84	59	70%
Assistant Professor	61	22	36%	49	14	29%	110	36	33%
Instructor	7	2	29%	17	5	29%	24	7	29%
Other Faculty	18		0%	27		0%	45		0%
<b>Total</b>	<b>179</b>	<b>96</b>	<b>54%</b>	<b>135</b>	<b>54</b>	<b>40%</b>	<b>314</b>	<b>150</b>	<b>48%</b>
<b>1990</b>									
Professor	40	40	100%	12	12	100%	52	52	100%
Associate Professor	48	39	81%	22	20	91%	70	59	84%
Assistant Professor	49	22	45%	30	16	53%	79	38	48%
Instructor	3	2	67%	9	2	22%	12	4	33%
Other Faculty	10		0%	15		0%	25		0%
<b>Total</b>	<b>150</b>	<b>103</b>	<b>69%</b>	<b>88</b>	<b>50</b>	<b>57%</b>	<b>238</b>	<b>153</b>	<b>64%</b>
<b>1995</b>									
Professor	45	44	98%	18	17	94%	63	61	97%
Associate	52	40	77%	29	22	76%	81	62	77%
Assistant	38	15	39%	41	10	24%	79	25	32%
Instructor	1	1	100%	8	1	13%	9	2	22%
Other Faculty	29		0%	28		0%	57		0%
<b>Total</b>	<b>165</b>	<b>100</b>	<b>61%</b>	<b>124</b>	<b>50</b>	<b>40%</b>	<b>289</b>	<b>150</b>	<b>52%</b>

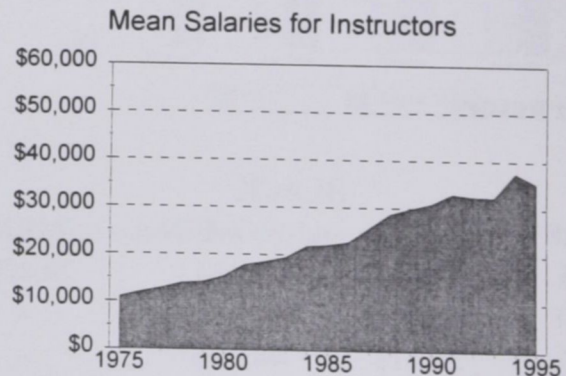
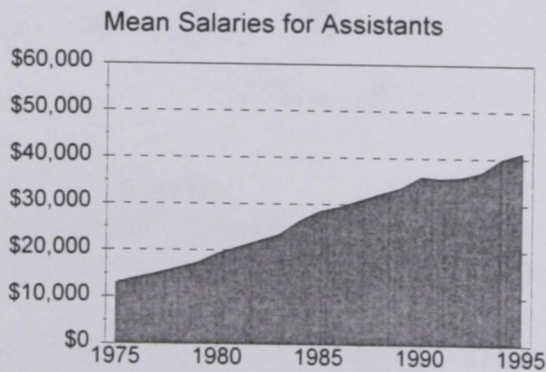
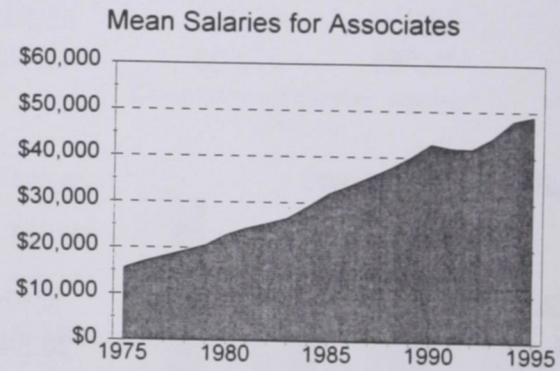
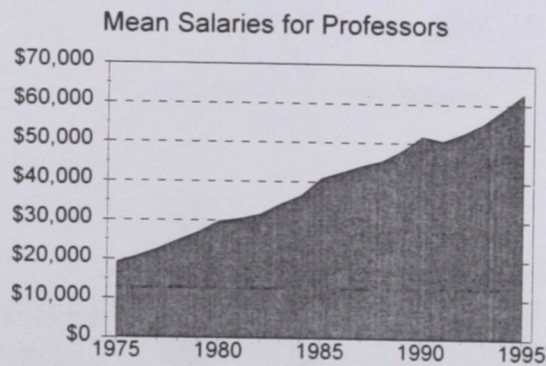


SOURCE: Personnel Data Files

# Faculty Salaries

## Mean Salaries of Full-Time Instructional Faculty by Rank \*

Year	1975-1985				1986-1995			
	Professor	Associate Professor	Assistant Professor	Instructor	Professor	Associate Professor	Assistant Professor	Instructor
1975	19,187	15,600	12,937	10,922	42,444	33,749	29,478	22,740
1976	20,777	17,069	14,073	11,928	44,122	35,680	30,900	25,679
1977	22,641	18,222	15,057	12,790	45,475	37,648	32,371	28,709
1978	24,874	19,492	16,240	13,921	48,100	40,052	33,662	29,862
1979	26,956	20,656	17,305	14,199	51,801	42,898	35,979	30,927
1980	29,735	23,027	19,337	15,415	50,624	42,085	35,729	33,011
1981	30,514	24,411	20,718	17,825	52,595	41,918	35,929	32,520
1982	31,558	25,491	22,123	18,545	55,130	44,264	37,082	32,423
1983	34,236	26,671	23,442	19,455	58,883	47,967	39,915	37,575
1984	36,350	29,319	26,456	21,847	62,842	49,049	41,300	35,383
1985	40,917	32,022	28,451	22,144				



\* Salary data adjusted to nine-month salary scales  
SOURCE: Personnel Data Files

# Faculty Salaries

## Mean Salaries by Rank, Race, & Sex \*

### Professors

YEAR	BLACK		WHITE		OTHER	
	MEN	WOMEN	MEN	WOMEN	MEN	WOMEN
1985	41,373	38,867	42,113	40,182	37,482	--
1990	52,933	49,545	50,534	55,136	48,600	--
1995	61,176	62,372	59,169	61,545	53,410	--

### Associate Professors

YEAR	BLACK		WHITE		OTHER	
	MEN	WOMEN	MEN	WOMEN	MEN	WOMEN
1985	33,399	32,489	31,814	29,638	29,483	32,603
1990	44,953	45,360	41,558	35,704	36,920	--
1995	46,566	51,606	47,702	48,142	40,417	--

### Assistant Professors

YEAR	BLACK		WHITE		OTHER	
	MEN	WOMEN	MEN	WOMEN	MEN	WOMEN
1985	28,663	27,879	28,549	25,924	36,984	33,403
1990	35,640	34,756	38,177	36,989	--	--
1995	42,174	42,643	40,150	38,991	34,900	35,463

### Instructors

YEAR	BLACK		WHITE		OTHER	
	MEN	WOMEN	MEN	WOMEN	MEN	WOMEN
1985	19,143	23,334	29,473	24,599	--	21,583
1990	28,024	31,152	--	33,379	--	--
1995	26,611	44,856	--	39,884	--	--

\*Salary data adjusted to nine-month salary scales

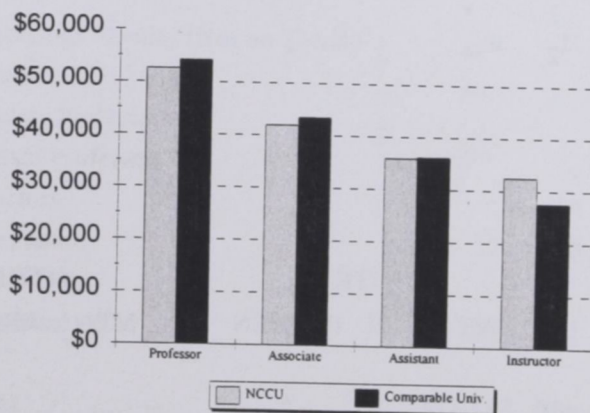
SOURCE: Personnel Data Files

# Faculty Salaries

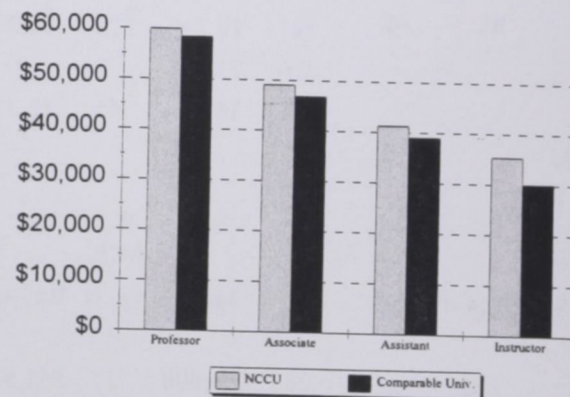
## Comparison of Faculty Salaries by Rank for NCCU \* and Comparable Public Universities \*\*

RANK	1992 - 93		1995 - 96	
	NCCU*	COMPARABLE UNIVERSITIES**	NCCU*	COMPARABLE UNIVERSITIES**
Professor	\$52,595	\$54,240	\$62,842	\$58,520
Associate Professor	41,918	43,430	49,049	46,860
Assistant Professor	35,929	36,160	41,300	39,000
Instructor	32,520	27,600	35,383	30,120

Comparison of Faculty Salaries  
1992 - 93



Comparison of Faculty Salaries  
1995 - 96



\* Source: Personnel Data File, Fall 1995 Salary data adjusted to nine-month salary scales for instructional faculty who are full-time EPA employees.

\*\* Source Chronicle of Higher Education,  
Vol. XLII No. 31, April 12, 1996, Page A18.

# EPA & SPA Employees Salaries

## Mean Salaries by Occupational Activity Category, Race & Sex \*

### Fall 1985

Occupational Activity Category	N	BLACK		N	WHITE		N	OTHER			
		MEN	WOMEN		MEN	WOMEN		MEN	WOMEN		
Administrators	29	\$43,643	12 \$35,207	4	\$35,586	3	\$46,297	1	*		
Professional	25	21,819	50 21,742	5	24,553	2	*	1	*	2	*
Technical	28	17,449	28 16,267	1	*						
Clerical	21	13,804	197 14,811	2	*	1	*	1	*	1	*
Skilled Crafts	34	17,282	4 17,133	2	*						
Service	102	10,966	49 10,294	1	*	1	*				

### Fall 1990

Occupational Activity Category	N	BLACK		N	WHITE		N	OTHER			
		MEN	WOMEN		MEN	WOMEN		MEN	WOMEN		
Administrators	29	\$51,625	23 \$47,809	5	\$49,570	3	\$47,521				
Professional	23	32,336	49 29,166	2	*	3	29,588			1	*
Technical	29	23,006	23 21,440	2	*						
Clerical	21	18,290	178 20,290	2	*	2	*			2	*
Skilled Crafts	36	21,963	2 *	1	*						
Service	70	14,409	45 13,320			2	*				

### Fall 1995

Occupational Activity Category	N	BLACK		N	WHITE		N	OTHER			
		MEN	WOMEN		MEN	WOMEN		MEN	WOMEN		
Administrators	22	\$69,608	31 \$51,529	10	\$57,832	2	*				
Professional	40	37,032	64 33,694	8	33,732	3	21,834	1	*	2	*
Technical	34	23,238	28 23,506	1	*	2	*	1	*		
Clerical	25	20,968	202 21,513	1	*					2	*
Skilled Crafts	45	22,739	1 *	2	*	1	*				
Service	55	17,408	37 16,421			2	*				

\* Salary means are omitted for cells with fewer than three persons.

Instructional faculty are not included among these categories.

SOURCE: Personnel Data File, 1995

# EPA & SPA Employees (Full-Time)

## Totals by Occupational Activity Category, Race, & Sex

Occupational Activity Category	BLACK		WHITE		OTHER		TOTAL		TOTAL
	MEN	WOMEN	MEN	WOMEN	MEN	WOMEN	MEN	WOMEN	
<b>Administrators</b>	22	31	10	2			32	33	65
<b>Instructional Faculty (Tenured)</b>	56	33	37	18	7	1	100	52	152
Professors	21	11	19	7	4		44	18	62
Associate Professors	23	15	14	8	3		40	23	63
Assistant Professors	11	6	4	3		1	15	10	25
Instructors	1	1					1	1	2
Other Faculty									
<b>Instructional Faculty (On Tenure Track)</b>	19	28	16	11	1	3	36	42	78
Professors	1	1					1	1	2
Associate Professors	9	6	3	2			12	8	20
Assistant Professors	9	19	13	7	1	3	23	29	52
Instructors		2		2				4	4
Other Faculty									
<b>Instructional Faculty (Not on Track)</b>	20	22	5	5	1	1	26	28	54
Professors									
Associate Professors									
Assistant Professors									
Instructors		4						4	4
Other Faculty	20	18	5	5	1	1	25	22	47
<b>Professional</b>	37	61	8	2	1	2	46	65	111
<b>Clerical</b>	17	188	1			2	18	190	208
<b>Technical</b>	35	27	1	1	1		37	28	65
<b>Skilled Crafts</b>	43	1	2	1			45	2	47
<b>Service</b>	53	33		2			53	35	88
<b>TOTAL</b>	302	424	80	42	11	9	393	475	868

SOURCE: OCR 21K A1A - Employees in Institutions of Higher Education , Fall 1995

# EPA & SPA Employees (Full-Time)

## New Employees

Occupational Activity Category	BLACK		WHITE		OTHER		TOTAL		Total
	MEN	WOMEN	MEN	WOMEN	MEN	WOMEN	MEN	WOMEN	
Administrators	4	4	2				6	4	10
<b>Instructional Faculty (Tenured)</b>									
Professors									
Associate Professors									
Assistant Professors									
Instructors									
Other Faculty									
<b>Instructional Faculty (On Tenure Track)</b>									
Professors	3	1	3			1	6	2	8
Associate Professors		1						1	1
Assistant Professors	1						1		1
Instructors	2		3	1		1	5	1	6
Other Faculty									
<b>Instructional Faculty (Not on Track)</b>									
Professors	3			1			3	1	4
Associate Professors									
Assistant Professors									
Instructors									
Other Faculty	3			1			3	1	4
Professional	3	5			1	1	4	6	10
Clerical	2	25					2	25	27
Technical	4	6			1		5	6	11
Skilled Crafts	5	3					5	3	8
Service	8	2					8	2	10
<b>TOTAL</b>	<b>32</b>	<b>46</b>	<b>5</b>	<b>1</b>	<b>2</b>	<b>2</b>	<b>39</b>	<b>49</b>	<b>88</b>

SOURCE: OCR 21K A1B New Employees in Institutions of Higher Education, Fall 1995

# EPA & SPA Employees (Full-Time)

## Retirements, Resignations, & Dismissals

Occupational Activity Category	BLACK		WHITE		OTHER		TOTAL		TOTAL
	MEN	WOMEN	MEN	WOMEN	MEN	WOMEN	MEN	WOMEN	
<b>Administrators</b>	9	1	2				11	1	12
<b>Instructional Faculty (Tenured)</b>	5		3				8		8
Professors	2		2				4		4
Associate Professors	1		1				2		2
Assistant Professors	2						2		2
Instructors									
Other Faculty									
<b>Instructional Faculty (On Tenure Track)</b>	2	3			1		3	3	6
Professors									
Associate Professors									
Assistant Professors	2	3			1			3	3
Instructors									
Other Faculty									
<b>Instructional Faculty (Not on Track)</b>	2	4	3	2			5	6	11
Professors									
Associate Professors									
Assistant Professors									
Instructors	1						1		1
Other Faculty	1	4	3	2			4	6	10
<b>Professional</b>	2	8	2	2			4	10	14
<b>Clerical</b>	7	31					7	31	38
<b>Technical</b>	4	4					4	4	8
<b>Skilled Crafts</b>	6	11					6	11	17
<b>Service</b>	14	14			1		15	14	29
<b>TOTAL</b>	51	76	10	4	2		63	80	143

Source: OCR 21K A3 Retirements, Resignations and Dismissals of Employees in Institutions of Higher Education, Fall 1995



# EPA & SPA Employees (Full-Time)

## Promotions

Occupational Activity Category	BLACK		WHITE		OTHER		TOTAL		TOTAL
	MEN	WOMEN	MEN	WOMEN	MEN	WOMEN	MEN	WOMEN	
Administrators	2						2		2
<b>Instructional Faculty (Tenured)</b>									
Professors	3	2	3				6	2	8
Associate Professors	2	2	2				4	2	6
Assistant Professors	1		1				2		2
Instructors									
Other Faculty									
<b>Instructional Faculty (On Tenure Track)</b>									
Professors		1						1	1
Associate Professors								1	1
Assistant Professors		1							
Instructors									
Other Faculty									
Professional		4						4	4
Clerical		4						4	4
Technical	2						2		2
Skilled Crafts	3						3		3
Service									
<b>TOTAL</b>	10	11	3				13	11	24

SOURCE: OCR 21K A4 Promotions of Employees in Institutions of Higher Education, Fall 1995