

FACTS

1982 - 1983

A decorative graphic consisting of a repeating pattern of stylized buildings. Each building is represented by a dark maroon triangle pointing upwards, with a white rectangular cutout in the center representing a window. The buildings are arranged in a row, with their bases aligned horizontally.

North Carolina Central University

**OFFICE OF RESEARCH, EVALUATION
AND PLANNING
DURHAM, NORTH CAROLINA**

FACTS

1982-1983

A Compilation of Significant Characteristics
of
North Carolina Central University

Contents and Organization

Linda K. Pratt

Analysis and Table Design

James Pierce

Technical Production and Typing

Helen Faucette
Joan Wells

Office of Research, Evaluation, and Planning
North Carolina Central University
Durham, North Carolina 27707

May, 1983

TABLE OF CONTENTS

	<u>Page</u>
Dedication	i
Preface	ii
Facts About the University	1
Facts About the Students	32
Facts About the Faculty and Staff	63
Appendix	100

DEDICATION

This edition of FACTS is dedicated to Chancellor Albert N. Whiting, chief executive of North Carolina Central University from 1967 to 1983.

The project was conceived and directed by the staff of the Center for Research, Evaluation, and Planning (CREP) at North Carolina Central University. The staff includes: Linda N. Pratt, Director; Robert L. Smith, Associate Director; and the following staff members: [names are illegible]

As in the past, the staff of CREP was able to complete this project only because of the support and cooperation of the faculty and staff of the University. A special effort was made to ensure that the project was completed on time and on budget. The staff of CREP is grateful to the faculty and staff of the University for their support and cooperation.

I would like to express my appreciation to Dr. Charles Johnson of the Learning Resources Center for the design of the cover, to Dr. Robert L. Smith, Associate Director, for his help in the design of the cover, and to Dr. Robert L. Smith, Associate Director, for his contribution prior to the transfer to the Center for Research, Evaluation, and Planning. I would also like to thank the staff of CREP for their support and cooperation.

Linda N. Pratt
Linda N. Pratt
Associate Vice-Chancellor
for Research, Evaluation, and
Planning

PREFACE

FACTS is a revised and updated version of the **FACT BOOK** which has been published by the Office of Research, Evaluation, and Planning for many years. This year, the organization has been changed, some tables have been revised, and new tables have been added.

As in the past, an effort has been made to provide accurate, data to be used in reports, grants, proposals and the planning process. A special effort has been made to make the data consistent from table to table and congruent with data submitted to external agencies.

I would like to express my appreciation to Mr. Charles Johnson of the Learning Resources for the design of the cover, to Mr. Pierce, Mrs. Faucette, and Ms. Wells for the care and time spent in preparing the manuscript and to Dr. Nathaniel Felder for his contribution prior to his transfer to the Data Processing Center. **FACTS** could not have been completed without these persons.

Linda Pratt

Linda K. Pratt
Associate Vice-Chancellor
for Academic Affairs for
Research, Evaluation, and
Planning

Facts About the University

	<u>Page</u>
<u>General Information</u>	
Purpose and History	2
Non-Discrimination Statement of Policy	5
High Priority Goals	6
Accreditation	9
Degrees, Programs and Program Tracks	10
<u>Organization Structure</u>	
Organizational Chart	16
University of North Carolina Board of Governors	17
University of North Carolina Officers of General Administration	18
North Carolina Central University Board of Trustees	21
North Carolina Central University Officers and Administrative Staff	22
<u>Resources</u>	
TABLE 1 -- Characteristics of NCCU Facilities, Fall, 1982	25
TABLE 2 -- Revenues, Expenditures and Assets for Fiscal Year, 1981-82	28
TABLE 3 -- Current Plant Funds for Fiscal Year, 1981-82	29
TABLE 4 -- Student Tuition, Fees and Charges for the 1982-83 Academic Year	30
TABLE 5 -- Library Components, Fall, 1982	31

PURPOSE OF THE UNIVERSITY

North Carolina Central University offers undergraduate instruction in the arts and sciences and in business and education. In addition, it conducts a number of graduate programs leading to the master's degree in these areas. The University offers post-graduate, first-degree professional programs through its Schools of Law and Library Science.

The University's authority to offer instruction and to confer degrees derives from The University of North Carolina through its Board of Governors, under the legislation which created the unified University of North Carolina on October 30, 1971.

Through the undergraduate program (and to some extent through the graduate and professional programs) attention is directed to the achievement of the following:

1. Development of perspective and intellectual strength for the endeavors of a lifetime.
2. Acquaintance with our cultural heritage as a background for understanding and relating to the existing social order.
3. Provision of a climate for high-quality learning with special emphasis on education for knowledge, intelligent, responsive participation in the home, the community, and a career.
4. A liberal education with a number of opportunities in specialized education so that students are prepared to pursue various professional careers with confidence and competence.
5. Recognition of the need for continuous learning throughout one's life in order to be effective, responsible citizens in a rapidly changing society.

HISTORY

North Carolina Central University, a state-supported liberal arts institution, was chartered in 1909 as a private institution and opened to students on July 10, 1910. It was founded by its late President, Dr. James E. Shepard. From the beginning, when it was known as the National Religious Training School and Chautauqua, its purpose has been the development in young men and women of that fine character and sound academic training requisite for real service to the nation. To this end, the training of all students has been entrusted to the most capable teachers available.

The institution's early years were characterized by wealth of enthusiasm and high endeavor, but not of money. Private donations and student fees constituted the total financial support of the school, and the heavy burden of collecting funds rested on one man, the President.

In 1915 the school was sold and reorganized, then becoming the National Training School. During this period of its history Mrs. Russell Sage of New York was a generous benefactor of the school.

In 1923 the General Assembly of North Carolina appropriated funds for the purchase and maintenance of the school; thus in that year it became a publicly-supported institution, and it was then named Durham State Normal School. Two years later the Legislature converted it into the North Carolina College for Negroes, dedicating it to the offering of liberal arts education and the preparation of teachers and principals of secondary schools.

At its 1927 session the General Assembly began a program of expansion of the college plant to conform to the needs of an enlarged academic program. The sincere interest of the Honorable Angus W. McLean, then Governor of North Carolina, and his belief in the institution aided greatly in the promotion of this program. State appropriations were supplemented by a generous gift from the late B. N. Duke, and by contributions from citizens of Durham.

The first four-year college class was graduated in 1929. The alumni register of the institution now bears the names of distinguished citizens of the nation as well as of other worthy individuals who daily contribute significantly to the leadership and development of their local communities.

The University was accredited by the Southern Association of Colleges and Secondary Schools as an "A" class institution in 1937 and was admitted to membership in this association in 1957. It has also been approved by the Association of American Universities and the National Council for the Accreditation of Teacher Education and holds an "A" rating with the American Medical Association and the North Carolina State Department of Public Instruction.

The 1930's afforded federal grants and State appropriations for a new program of physical expansion and improvement of educational facilities; this program continued until the opening of World War II.

The General Assembly of 1939 authorized the establishment of graduate work in liberal arts and the professions. Pursuant thereto graduate courses in the Arts and Sciences were first offered in that same year; the School of Law began operation in 1940, and the School of Library Science was established in 1941.

In 1947 the State Legislature changed the name of the institution to the North Carolina College at Durham.

On October 6, 1947, the college suffered irreparable loss through the death of its founder and President, Dr. James E. Shepard. The Board of Trustees appointed an Interim Committee, consisting of Dr. Albert E. Manley, Dean of the College of Arts and Sciences, Miss Ruth G. Rush, Dean of Women, and Dr. Albert L. Turner, Dean of the School of Law, which administered the affairs of the institution until the election of the second president.

On January 20, 1948, Dr. Alfonso Elder was elected President of the institution. At the time of his election, Dr. Elder was serving as head of the Graduate Department of Education and had formerly been Dean of the College of Arts and Sciences. Dr. Elder retired September 1, 1963.

On August 9, 1963, Dr. Samuel P. Massie was elected as the third President of the College and assumed the office on September 1, 1963. Dr. Massie came to the institution from Washington, D C , where he was Associate Program Director for Undergraduate Science Education of the National Science Foundation and Professor and Chairman of the Department of Pharmaceutical Chemistry at Howard University. He resigned on February 1, 1966.

The Board of Trustees appointed an Interim Committee, consisting of William Jones, Business Manager; Dr. Helen G. Edmonds, Graduate Dean, and Dr. William H. Brown, Professor of Education, to administer the affairs of the institution until the fourth president took office.

On July 20, 1966, Dr. Albert N. Whiting was named fourth president of the institution. He came to North Carolina College from Baltimore, Maryland, where he had served for several years as Dean of Faculty of Morgan State College. Dr. Whiting assumed the office on July 1, 1967.

In 1969, the State Legislature again changed the name of the institution to North Carolina Central University. On July 1, 1972, North Carolina Central University became a constituent institution of the University of North Carolina.

NON-DISCRIMINATION STATEMENT OF POLICY

NORTH CAROLINA CENTRAL UNIVERSITY is committed to equality of educational opportunity and does not discriminate against applicants, students, or employees based on race, color, national origin, religion, sex, age, or handicap. Moreover, NORTH CAROLINA CENTRAL UNIVERSITY is open to people of all races and actively seeks to promote racial integration by recruiting and enrolling a larger number of white students.

NORTH CAROLINA CENTRAL UNIVERSITY supports the protections available to members of its community under all applicable Federal laws, including Titles VI and VII of the Civil Rights Act of 1964, Title IX of the Education Amendments of 1972, Sections 799A and 845 of the Public Health Service Act, the Equal Pay and Age Discrimination Acts, the Rehabilitation Act of 1973, and Executive Order 11246. For information concerning these provisions, contact: Director of Affirmative Action, Room 201, Administration Building, North Carolina Central University, Durham, North Carolina 27707, Telephone 683-6254 or 683-6472.

HIGH PRIORITY GOALS
ACCORDING TO PROGRAM CLASSIFICATION STRUCTURE

The Planning and Budgeting Council of North Carolina Central University has reviewed and revised the goals of the institution and classified them according to a structure consistent with the reporting requirements for the budget. The goals marked with an asterisk (*) have been chosen by the Academic and the Non-academic Planning and Budgeting Committees as those to be emphasized during the 1983-1985 budget biennium.

I. INSTITUTIONAL ADMINISTRATION PROGRAM (6.0)

To assure the organization effectiveness and continuity of NCCU by (1) providing for planning and executive direction, (2) providing for administrative and logistical services, (3) enhancing relationships with NCCU's constituencies, (4) providing services and conveniences for the employees of NCCU, and (5) recruiting and admitting students to the NCCU educational program by accomplishing the following objectives:

- *1. : To improve the recruitment system and to offer scholarships and financial aid based on financial need as well as on academic excellence.
- 2. A&E#2: To establish a reputation that would be more competitive with predominantly white institutions that are currently attracting the caliber of students that we wish to enroll, enabling us to be more competitive in our recruitment efforts.
- *5. A #2: To acquire the resources necessary to support teaching, research, and learning, both directly through the administration's own efforts, and indirectly through provision of information on funding sources and other matters to faculty and students.
- 6. F #1: To encourage excellence in teaching.
- 7. F #2: To attract and retain highly qualified faculty.
- 8. A #8: To develop and maintain a planning and budgeting process that will ensure that accountability, efficiency and effectiveness are evident in the implementation of the goals and objectives of the University.
- 11. SA #1: To implement an improved registration system.
- 13. LR #2: To support and strengthen the academic, research and cultural programs of the University by continuing the efforts of faculty and staff to increase and improve resource development.
- *16. ST #8: To give priority to the employment of additional staff personnel in understaffed areas.

II. INSTRUCTION PROGRAM (1.0)

To elicit, through an organized instructional program, some measure of educational change in students of NCCU. Educational change includes (1) the acquisition or improved understanding of some portion of the body of knowledge, (2) the adoption of new or different attitudes, and (3) the acquisition or increased mastery of a skill or set of skills.

3. I #1A: To assure the mastery of basic communication skills and to provide for their continuous reinforcement throughout the University. (p. 32 #1)

III. STUDENT FINANCIAL SUPPORT PROGRAM (8.0)

To provide financial assistance to students in the form of outright grants, trainee stipends, and prizes, awarded by and/or administered through NCCU.

4. SA #7: To broaden a scholarship program designed to attract students of high academic potential without concern for financial need.
17. : To supplement financial aid funds available from federal and state sources for students with demonstrated financial needs.

IV. ACADEMIC SUPPORT PROGRAM (4.0)

To support directly one or more of the three primary programs (Instruction, Research, Public Service) by carrying out activities (1) related to the preservation, maintenance and display of both the stock of knowledge and educational material, (2) that directly contribute to the way in which instruction is delivered or research is conducted, (3) directly related to the administration of academic programs, and (4) related to the professional development of academic personnel.

9. I #2B: To assure that all accrediting agency criteria and appropriate professional group standards are met by the departments and schools of the University. (p. 32 #4)
12. AT #2: To continue to strive for high levels of professional training in law, nursing, business, education, and library science.
14. AT #1: To maintain the quality and strengthen, as necessary, programs at the master's level.

V. PHYSICAL PLANT OPERATIONS PROGRAM (7.0)

To maintain existing grounds and facilities, provide utility services, and plan and design future plant expansions and modifications.

10. SP #3: To make every effort to encourage a physical environment conducive to educational, moral, cultural, and aesthetic growth.

VI. STUDENT SERVICE PROGRAM (5.0)

To contribute to the emotional and physical well-being of the students, as well as to their intellectual, cultural, and social development outside the context of the formal Instruction Program.

15. C #1: To develop a comprehensive counseling program (e.g., medical, academic, vocational, social, emotional, and financial).

Approved as a whole or through its components by:
American Bar Association
American Library Association
National Council for Accreditation of Teacher Education
The Advertising Service, National League for Nursing
North Carolina Board of Legal Examiners
North Carolina Board of Nursing
North Carolina State Bar Council

Approved as a whole or through its components by:
The American Association of Colleges and Schools
American Association of Colleges for Teacher Education
American Council on Education
Council on Higher Education Department of Social Services
The Higher Degree Program National League for Nursing
The Council of Graduate Schools in the United States
North American Association of Career Services
American Society of College-Bound Students

Approved for Teacher Certification by the North Carolina State Department of Public Instruction.

ACCREDITATION

North Carolina Central University is accredited by the Southern Association of Colleges and Schools, the North Carolina State Department of Public Instruction and the American Medical Association.

It is approved as a whole or through its components by:

Association of American Universities
American Bar Association
American Library Association
National Council for Accreditation of Teacher Education
The Accrediting Service, National League for Nursing
North Carolina Board of Legal Examiners
North Carolina Board of Nursing
North Carolina State Bar Council

It holds membership in:

The Southern Association of Colleges and Schools
American Association of Colleges for Teacher Education
American Council on Education
Council of Member Agencies Department of Baccalaureate
and Higher Degree Programs National League for
Nursing
The Council of Graduate Schools in the United States
North American Association of Summer Session
American Assembly of Collegiate Schools of Business

Approved for Teacher Certification by the North Carolina State Department of Public Instruction.

DEGREE PROGRAMS AND PROGRAM TRACKS

North Carolina Central University is authorized to offer degree programs in 14 discipline divisions at the baccalaureate, master's and professional levels. The programs and program tracks under each of these divisions with program titles, degrees, and tracks are as follows:

HEGIS Code	Division and Program Title	Level	Degree and Program Track
0400	<u>BIOLOGICAL SCIENCES</u>		
0401	Biology, General	Bachelor's	B.S., Biology B.S., Biology, Secondary Education
0401	Biology, General	Master's	M.S., Biology M.S., Biology, Secondary Education
0500	<u>BUSINESS AND MANAGEMENT</u>		
0502	Accounting	Bachelor's	B.B.A., Accounting
0506	Business Management and Administration	Bachelors'	B.B.A., Business Administration
0506	Business Management and Administration	Master's	M.B.A., Business Administration
0517	Business Economics	Bachelor's	B.B.A., Economics B.A., Economics
0800	<u>EDUCATION</u>		
0802	Elementary Education, General	Bachelor's	B.S., Elementary Education, Intermediate (4-9) B.A., Early Childhood Education (K-3)
0802	Elementary Education, General	Master's	M.A., Elementary Education (Early Childhood and Intermediate) M.Ed., Elementary Education (Early Childhood and Intermediate)

DEGREE PROGRAMS AND PROGRAM TRACKS (Continued)

HEGIS Code	Division and Program Title	Level	Degree and Program Track
0800	<u>EDUCATION</u> (Continued)		
0808	Special Education, General	Master's	M.Ed., Education of Mentally Retarded M.Ed., Education of the Emotionally Disturbed
0815	Speech Correction	Master's	M.Ed., Speech and Hearing Education
0826	Student Personnel (Counseling and Guidance)	Master's	M.A., Student Personnel (Counseling and Guidance) M.A., Career Counseling and Placement M.A., Agency Counseling
0835	Physical Education	Bachelor's	B.S., Physical Education
0835	Physical Education	Master's	M.A., Physical Education M.S., Physical Education, Secondary Education
0837	Health Education (including Family Life Education)	Bachelor's	B.S., Health Education B.S., Community Health Education
0838	Business, Commerce, and Distributive Education	Bachelor's	B.S.C., Business Education, Secondary Basic B.S.C., Business Education, Secondary Comprehensive
0838	Business, Commerce, and Distributive Education	Master's	M.S., Business Education, Secondary
0893	Educational Administration and Supervision	Master's	M.A., Educational Administration Supervision
0895	Health and Physical Education	Bachelor's	B.S., Physical Education
0897	Educational Media	Master's	M.A., Instructional Media

DEGREE PROGRAMS AND PROGRAM TRACKS (Continued)

HEGIS Code	Division and Program Title	Level	Degree and Program Track
1000	<u>FINE AND APPLIED ARTS</u>		
1002	Art (Painting, Drawing, Sculpture)	Bachelor's	B. A., Art, General B. A., Visual Communications B. A., Art, Fine Art B. A., Art, Art Education
1004	Music	Bachelor's	B. A., Jazz
1004	Music	Bachelor's	B. A., Sacred Music
1005	Music (Liberal Arts Program)	Bachelor's	B. A., Music (Liberal Arts Program) B. A., Music, Music Education
1005	Music (Liberal Arts Program)	Master's	M. A., Music (Liberal Arts Program) M. A., Music Education, K-12
1007	Dramatic Arts	Bachelor's	B. A., Dramatic Arts B. A., Dramatic Arts, Secondary Education B. A., Theatre Arts Education, K-12
1100	<u>FOREIGN LANGUAGES</u>		
1102	French	Bachelor's	B. A., French B. A., French, Secondary Education
1102	French	Master's	M. A., French M. A., French, Secondary Education
1103	German	Bachelor's	B. A., German B. A., German, Secondary Education
1105	Spanish	Bachelor's	B. A., Spanish B. A., Spanish, Secondary Education
1200	<u>HEALTH PROFESSIONS</u>		
1203	Nursing	Bachelor's	B. S. N., Nursing

DEGREE PROGRAMS AND PROGRAM TRACKS (Continued)

HEGIS Code	Division and Program Title	Level	Degree and Program Track
1300	<u>HOME ECONOMICS</u>		
1301	Home Economics, General	Bachelor's	B. S. H. E., Home Economics, General B. S. H. E., Home Economics, Secondary Education
1301	Home Economics, General	Master's	M. S., Home Economics Education
1303	Clothing and Textiles	Bachelor's	B. S. H. E., Clothing and Textiles
1306	Foods and Nutrition (including Dietetics)	Bachelor's	B. S. H. E., Foods and Nutrition (including Dietetics)
1400	<u>LAW</u>		
1401	Law, General	Professional	L. L. B., Law J. D., Law
1500	<u>LETTERS</u>		
1501	English, General	Bachelor's	B. A., English B. A., English, Secondary Education
1501	English, General	Master's	M. A., English
1509	Philosophy	Bachelor's	B. A., Philosophy
1600	<u>LIBRARY SCIENCE</u>		
1601	Library Science, General	Master's	M. L. S., Library Science
1700	<u>MATHEMATICS</u>		
1701	Mathematics, General	Bachelor's	B. S., Mathematics B. S., Mathematics, Secondary Education

DEGREE PROGRAMS AND PROGRAM TRACKS (Continued)

HEGIS Code	Division and Program Title	Level	Degree and Program Track
1700	<u>MATHEMATICS</u> (Continued)		
1701	Mathematics, General	Master's	M. S., Mathematics M. S., Mathematics, Secondary Education
1900	<u>PHYSICAL SCIENCES</u>		
1902	Physics, General (excluding Biophysics)	Bachelor's	B. S., Physics B. S., Physics, Secondary Education
1905	Chemistry, General (excluding Biochemistry)	Bachelor's	B. S., Chemistry B. S., Chemistry, Secondary Education
1905	Chemistry, General (excluding Biochemistry)	Master's	M. S., Chemistry M. S., Chemistry, Secondary Education
2000	<u>PSYCHOLOGY</u>		
2001	Psychology, General	Bachelor's	B. A., Psychology
2001	Psychology, General	Master's	M. A., Psychology
2100	<u>PUBLIC AFFAIRS AND SERVICES</u>		
2103	Parks and Recreation Management	Bachelor's	B. S., Recreation Administration
2103	Parks and Recreation Management	Master's	M. S., Recreation Administration
2105	Law Enforcement and Corrections	Bachelor's	B. A., Political Science: Criminal Justice
2200	<u>SOCIAL SCIENCES</u>		
2201	Social Sciences, General	Bachelor's	B. A., Social Sciences

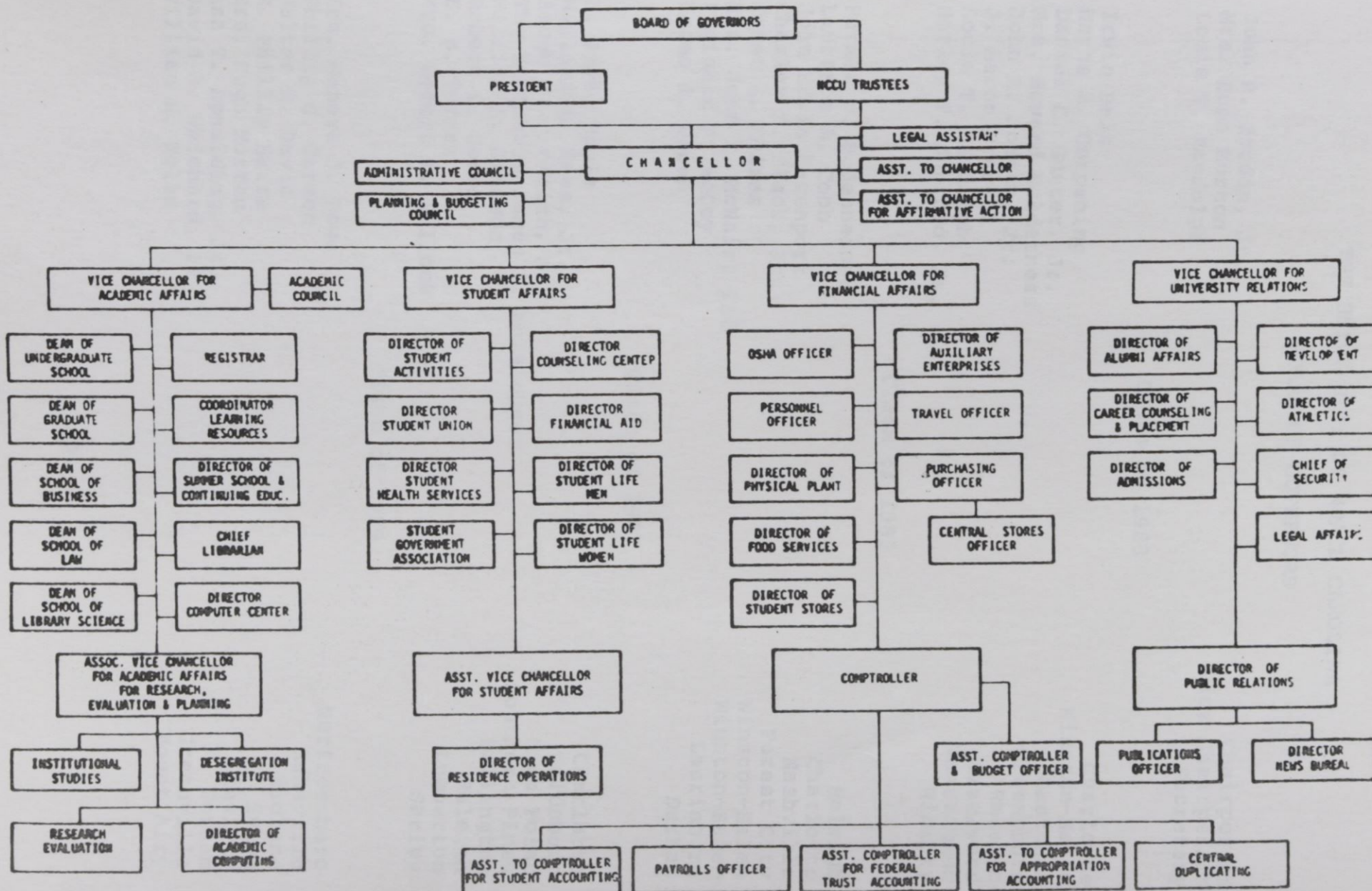
DEGREE PROGRAMS AND PROGRAM TRACKS (Continued)

HEGIS Code	Division and Program Title	Level	Degree and Program Track
2200	<u>SOCIAL SCIENCES</u> (Continued)		
2205	History	Bachelor's	B.A., History B.A., History, Secondary Education
2205	History	Master's	M.A., History M.A., History, Secondary Education
2206	Geography	Bachelor's	B.S., Geography
2207	Political Science and Government	Bachelor's	B.A., Political Science B.S., Political Science
2208	Sociology	Bachelor's	B.A., Sociology
2208	Sociology	Master's	M.A., Sociology
2211	Afro-American (Black Culture) Studies	Bachelors'	B.A., Black Studies

Source:

Academic Program Inventory, The University of North Carolina, July 1978.

NCCU ORGANIZATION CHART



THE UNIVERSITY OF NORTH CAROLINA

BOARD OF GOVERNORS

John R. Jordan, Jr.
Mrs. Hugh Morton
Louis T. Randolph

Chairperson
Vice Chairperson
Secretary

Class of 1983

Irwin Belk
Wayne A. Corpening
Daniel C. Gunter, Jr.
Mrs. Howard Holderness
John R. Jordan, Jr.
J. Aaron Prevost
Louis T. Randolph
Harley F. Shuford, Jr.

Charlotte
Winston-Salem
Gastonia
Greensboro
Raleigh
Hazelwood
Washington
Hickory

Class of 1985

Furman P. Bodenheimer
Laurence A. Cobb
John Edwin Davenport
Charles Z. Flack, Jr.
James E. Holmes
Mrs. John F. McNair, III
Reginald F. McCoy
Maceo A. Sloan

Raleigh
Charlotte
Nashville
Forest City
Winston-Salem
Winston-Salem
Laurinburg
Durham

Class of 1987

B. Irvin Boyle
William A. Dees, Jr.
Jacob H. Froelich, Jr.
The Honorable James E. Holshouser
William A. Johnson
Robert L. Jones
E. B. Turner
Mrs. Robert H. Bullock

Charlotte
Goldsboro
High Point
Southern Pines
Lillington
Raleigh
Lumberton
Shelby

Class of 1989

Mrs. Geneva J. Bowe
Phillip G. Carson
Walter R. Davis
R. Phillip Haire
Mrs. Hugh Morton
Asa T. Spaulding, Jr.
David J. Whichard, II
William K. Woltz

Murfreesboro
Asheville
Midland
Sylva
Linville
Durham
Greenville
Mount Airy

THE UNIVERSITY OF NORTH CAROLINA
OFFICERS OF GENERAL ADMINISTRATION

1982-83

William C. Friday	President
Zona C. Norwood	Assistant to the President
R. D. McMillan, Jr.	Assistant to the President for Governmental Affairs
Richard H. Robinson, Jr.	Assistant to the President for Legal Affairs
VACANT	Assistant to the President for Public Information
Arnold K. King	Assistant to the President for Relations with Faculty Assembly, Private Colleges and Universities and the Community College System
David N. Edwards, Jr. Jeffrey H. Orleans	Special Assistants to the President
John P. Kennedy, Jr.	Secretary of the University
Edward W. Crowe	Assistant Secretary of the University
John W. Dunlop	Director, The University of North Carolina Center for Public Television

ACADEMIC AFFAIRS DIVISION

Raymond H. Dawson	Vice President for Academic Affairs and Senior Vice President
Arthur Padilla Donald J. Stedman Robert W. Williams, Jr.	Associate Vice Presidents for Academic Affairs
Mickey L. Burnim	Assistant Vice President for Academic Affairs
Louis T. Parker, Jr.	Director, North Carolina Educational Computing Service
John Hogan	Acting Coordinator of Academic Affairs, N.C. Educational Computing Service

FINANCE DIVISION

L. Felix Joyner	Vice President for Finance
Hugh Buchanan Kennis Grogan	Associate Vice Presidents for Finance
Ellen H. Kepley A. P. Winfrey	Assistant Vice Presidents for Finance
J. Sibley Dorton, Jr.	Assistant Vice President for Finance and Treasurer
Allen Waters	Assistant Vice President for Finance and University Property Officer
Leon M. Ennis, Jr.	Finance Officer
Milton H. Gupton	Services Officer

PLANNING DIVISION

Roy Carroll	Vice President for Planning
Gary T. Barnes E. Bruce Sigmon, Jr.	Associate Vice Presidents for Planning
Robert F. Hill, Jr.	Director of Information Services
Linda Balfour	Coordinator of Data Collection
Kay Duffy	Coordinator of Special Studies

RESEARCH AND PUBLIC SERVICE PROGRAMS DIVISION

E. Walton Jones	Vice President for Research and Public Service Programs
Charles L. Wheeler	Assistant Vice President for Research and Public Service Programs and Director North Carolina State Commission on Higher Education Facilities
E. Carole Tyler	Director, Educational Information Center
Willard Babcock	Director, Institute for Transportation, Research and Education
Betty Sanders	Coordinator, Title I Programs

STUDENT SERVICES AND SPECIAL PROGRAMS DIVISION

Cleon F. Thompson, Jr.

Vice President
for Student Services and
Special Programs

John R. Corey

Associate Vice President
for Student Services and
Special Programs

Paul B. Marion

Assistant Vice President
for Student Services and
Special Programs

Stan C. Broadway

Executive Director
State Education Assistance Authority

NORTH CAROLINA CENTRAL UNIVERSITY

BOARD OF TRUSTEES

Hiliary H. Holloway (Chairman)	Philadelphia
Frank W. Ballance (Vice Chairman)	Warrenton
Alfred Whitesides (Secretary)	Asheville
Gail H. Blackburn, III	Durham
Victor S. Bryant, Jr.	Durham
George Watts Carr, Jr.	Durham
George C. Debnam	Raleigh
J. Richard Futrell, Jr.	Rocky Mount
Charles V. Holland	Raleigh
June M. Jeffers	Reidsville
Clarence Walker	Charlotte
Duane Howell (Ex-Officio Member)	Durham
[1 Vacancy]	

NORTH CAROLINA CENTRAL UNIVERSITY

OFFICERS AND ADMINISTRATIVE STAFF

1982-83

OFFICE OF THE CHANCELLOR

Albert N. Whiting, AB, MA, PhD, LLD, LHD	Chancellor
LaFayette W. Lipscomb, BA, MLS, MS, PhD	Assistant to the Chancellor
Brooklyn T. McMillon, AB, MSPH	Special Assistant to the Chancellor

ACADEMIC AFFAIRS

Cecil L. Patterson, AB, MA, PhD	Vice-Chancellor for Academic Affairs
Walter H. Pattillo, BS, MS, PhD	Dean, Undergraduate School
Charles E. Daye, BA, JD	Dean, School of Law
Annette L. Phinazee, AB, BLS, DLS	Dean, School of Library Science
Mary M. Townes, BS, MSPH, MS, PhD	Dean, Graduate School of Arts and Sciences
Tyronza Richmond, BA, MA, PhD	Dean, School of Business
Percy Luney, AB, JD	Assistant Dean, School of Law
Suzanne Leary, BA, MA, AMLS, JD	Assistant Dean, School of Law
George Reid, BA, MA, PhD	Assistant Dean, Undergraduate School of Arts and Sciences
Benjamin F. Speller, Jr., BA, MAT, PhD	Assistant Dean Library Science
John Turner, BSC, MEd	Assistant Dean, School of Business
Waltz Maynor, BA, MA, EdD	Director, Summer Sessions and Continuing Education
Pennie E. Perry, BA, MS, MLS	Chief Librarian
Bernell Jones, BSC, MS, PhD	Registrar
Lynwood Tharrington, BS, MS	Director, Data Processing Center
Arthrell Sanders, BA, MA, PhD	Director, Faculty Senate

Office for Research, Evaluation, and Planning

Linda K. Pratt, BA, MA, PhD	Associate Vice Chancellor for Academic Affairs for Research, Evaluation, and Planning
(VACANT)	Associate Director for Research, Evaluation, and Planning
Jeff E. Smith, BA, AM, MA	Director, Institute on Desegregation
Nathaniel L. Felder, BA, MA, PhD	Director, Institutional Studies

Departmental Chairpersons

Raphael N. Thompson, BA, MBA	Accounting
Lana T. Henderson, BA, MA, PhD	Art
John Ruffin, BS, MS, PhD	Biology
Davesene Spellman, BSC, MS, EdD	Business Education/ Administrative Service
James Schooler, AB, MS, PhD	Chemistry
Linda Norfleet, BA, MA	Dramatic Art
Vacant	Economics/Finance
Charles Alcorn, BA, EdM, PhD	Education
Patsy B. Perry, BA, MA, PhD	English

University Relations

Tyrone Baines, AB, MSW, MA PhD

William Malone, BS, MSPH

William P. Evans, BS
Lindsey Merritt, BSC, MS

Nancy Rowland, BA, MA
Robert Poole, BA
Henry Lattimore, BS, MS
John W. Smith, BA
Alex M. Rivera, BA
David H. Witherspoon, AB

Vice-Chancellor for
University Relations
Assistant Vice-Chancellor for
University Relations
Director of Alumni Affairs
Director of Career Counseling
and Placement
Director of Admissions
Director of Development
Director of Physical Education
Chief of Security
Director of Public Relations
Director of News Bureau

TABLE 1

CHARACTERISTICS OF NCCU FACILITIES, FALL 1982

INSTRUCTIONAL FACILITIES

<u>YEAR COMPLETED</u>	<u>NAME</u>	<u>ASSIGNABLE SQUARE FT.</u>	<u>CLASS ROOMS</u>	<u>CLASS LABS</u>	<u>OTHER LABS</u>	<u>OFFICES</u>
1930	Academic Skills Center	10,194	4		4	26
1937	Duke Auditorium	10,566			1	2
1937	Old Law School	12,996	5			15
1937	Robinson Science	16,316	11	6	3	19
1940	Womens Gym	13,421				4
1950	Classroom Building	14,682	11			44
1950	McDougald Gym	35,421	3		7	
1950	Music and Fine Arts	14,132	3	9		6
1950	Shepard Library	38,742	4			21
1952	Dent Home Economics	13,780	6	2	5	13
1953	Home Econ. Practice House	2,870				13
1955	Taylor Education Bldg.	15,715	16	1	6	42
1956	Lee Biology Building	21,137	6	9	21	9
1956	Willis Commerce Bldg.	25,958	9	6		57
1957	Biology Greenhouse	440		1		
1969	Bowling Alley	5,358	1			
1969	Hubbard Chemistry	19,085	4	10	9	10
1976	Communications Bldg.	51,910	28	4	4	66
1976	Fine Arts Addition	14,987	4	2	13	18
1980	Turner Law School	50,912	7		2	41
1982	Health Sciences Bldg.	28,684	13	2	5	25
TOTAL INSTRUCTIONAL FACILITIES		427,297	135	51	74	425

SOURCE: North Carolina Facilities Inventory and Space Utilization Reports, Fall 1982

TABLE 1

CHARACTERISTICS OF NCCU FACILITIES, FALL 1982 (CONTINUED)

ADMINISTRATIVE/FACULTY/STUDENT SERVICE FACILITIES

<u>YEAR COMPLETED</u>	<u>NAME</u>	<u>ASSIGNABLE SQUARE FT.</u>	<u>OFFICES</u>
1925	Admissions Office	2,487	6
1929	Hoey Administration Bldg.	19,239	79
1937	Cottage 1	1,784	10
1937	Jordan House	1,747	8
1937	Personnel Building	1,558	5
1937	ROTC	1,730	7
1945	Faculty Apt. 1	3,625	10
1950	Central Heating Plant	6,805	
1950	Health Building	13,071	16
1956	McDougald House	3,299	5
1963	Honors Court	849	3
1965	Storage Building	11,694	1
1966	Pearson Cafeteria	21,834	1
1968	Elder Student Union	26,543	16
1977	Maintenance Building	7,897	10
TOTAL ADMINISTRATIVE/FACULTY/ STUDENT SERVICES FACILITIES		161,065	177

TABLE 1

CHARACTERISTICS OF NCCU FACILITIES, FALL 1982 (CONTINUED)

RESIDENTIAL FACILITIES

<u>YEAR</u> <u>COMPLETED</u>	<u>NAME</u>	<u>ASSIGNABLE</u> <u>SQUARE FT.</u>	<u>OCCUPANCY</u>	<u>OFFICES</u>
<u>DORMITORIES</u>				
1930	Shepard (women)	28,744	156	2
1937	McLean (women)	16,669	80	2
1937	Rush (women)	17,189	70	
1939	Old Senior (women)	10,240	18	18
1951	Chidley (men)	77,282	639	3
1951	Graduate Apts. (Faculty Apt. 2)	10,750	12	
1960	Latham (women)	28,453	201	1
1966	Baynes (women)	52,323	402	1
1968	Eagleson (women)	55,526	402	1
<u>TOTAL DORMITORY FACILITIES</u>		<u>297,176</u>	<u>1981</u>	<u>28</u>
<u>OTHER RESIDENTIAL FACILITIES</u>				
1960	707 Burlington Ave.	850		
1960	709 Burlington Ave.	850		
1963	521 Nelson Street	1,150		
1963	523 Nelson Street	850		
1969	1908 Fayetteville St.	1,649		
1969	1910 Fayetteville St.	454		
1974	Chancellor's Residence	3,293		
<u>TOTAL OTHER RESIDENTIAL FACILITIES</u>		<u>9,096</u>		
<u>GRAND TOTAL: ALL FACILITIES</u>		<u>894,634</u>		

TABLE 2

REVENUES, EXPENDITURES AND ASSETS FOR
FISCAL YEAR, 1981-82

DESCRIPTION OF FINANCIAL STATISTICS	AMOUNT (IN DOLLARS)
CURRENT FUNDS REVENUES BY SOURCES	
TUITION & FEES	\$3,080,194
STATE	18,363,638
GOVERNMENT GRANTS & CONTRACTS	
FEDERAL, UNRESTRICTED	238,234
FEDERAL, RESTRICTED	2,013,909
STATE, UNRESTRICTED	24,133
STATE, RESTRICTED	280,467
LOCAL, UNRESTRICTED	
LOCAL, RESTRICTED	
PRIVATE GIFTS, GRANTS & CONTRACTS	
UNRESTRICTED	
RESTRICTED	126,500
ENDOWMENT INCOME	
UNRESTRICTED	-0-
RESTRICTED	64,000
SALES & SERVICES OF EDUCATIONAL ACTIVITIES	393,124
SALES & SERVICES OF AUXILIARY ENTERPRISES	4,749,971
SALES & SERVICES OF HOSPITALS	
OTHER SOURCES	14,234
INDEPENDENT OPERATIONS	
TOTAL CURRENT FUNDS REVENUE	29,348,404
CURRENT FUNDS EXPENDITURES & MANDATORY TRANSFER	
FUNCTION: EDUCATIONAL & GENERAL	
INSTRUCTION	11,615,807
RESEARCH	203,710
PUBLIC SERVICE	6,917
ACADEMIC SUPPORT (INCLUDING LIBRARIES)	2,810,803
STUDENT SERVICES	1,061,360
INSTITUTIONAL SUPPORT	2,331,894
OPERATION & MAINTENANCE OF PLANT	2,930,200
SCHOLARSHIPS & FELLOWSHIPS	
AWARDS FROM UNRESTRICTED FUNDS	288,420
AWARDS FROM RESTRICTED FUNDS	661,113
EDUCATIONAL & GENERAL MANDATORY TRANSFER	
AUXILIARY ENTERPRISES (INCLUDING MANDATORY TRANSFERS)	4,238,367
HOSPITALS (INCLUDING MANDATORY TRANSFERS)	
INDEPENDENT OPERATIONS (INCLUDING MANDATORY TRANSFERS)	
TOTAL CURRENT FUNDS EXPENDITURES & MANDATORY TRANSFERS	26,148,591
PHYSICAL PLANT ASSETS	
LAND	
BOOK VALUE AT BEGINNING OF YEAR	499,644
ADDITIONS DURING YEAR	
DEDUCTIONS DURING YEAR	
BOOK VALUE AT END OF YEAR	499,644
BUILDINGS	
BOOK VALUE AT BEGINNING OF YEAR	33,836,327
ADDITIONS DURING YEAR	3,607,933
DEDUCTIONS DURING YEAR	
BOOK VALUE AT END OF YEAR	37,444,260
EQUIPMENT	
BOOK VALUE AT BEGINNING OF YEAR	6,733,434
ADDITIONS DURING YEAR	820,526
DEDUCTIONS DURING YEAR	
BOOK VALUE AT END OF YEAR	7,553,960

TABLE 3
CURRENT AND PLANT FUNDS FOR FISCAL YEAR
1981-1982

ACTIVITY CLASSIFICATION	AMOUNT (IN DOLLARS)
INSTRUCTION	\$11,615,807
ORGANIZED RESEARCH	203,710
PUBLIC SERVICE	6,917
ACADEMIC SUPPORT	2,810,803
STUDENT SERVICES	1,061,360
INSTRUCTIONAL SUPPORT	2,331,894
PHYSICAL PLANT OPERATIONS	2,930,200
AUXILIARY & INDEPENDENT OPERATIONS	4,238,367
STUDENT FINANCIAL AID	949,533
MULTI-ACTIVITY	
TOTAL	26,148,591

TABLE 4

STUDENT TUITION, FEES AND CHARGES
FOR THE 1982-83 ACADEMIC YEAR

CATEGORY	UNDERGRADUATE		GRADUATE	
	IN-STATE	OUT-OF-STATE	IN-STATE	OUT-OF-STATE
TUITION AND ACADEMIC FEES	\$ 372.00	\$ 2,160.00	\$ 372.00	\$ 2,160.00
OTHER REQUIRED FEES			263.00	263.00
Athletic Fee	48.00	48.00		
Health Services Fee	63.00	63.00		
Cultural Series	10.00	10.00		
Student Publications	5.00	5.00		
Student Union	70.00	70.00		
General Student Activity Fee	52.00	52.00		
Debt Services	22.00	22.00		
Fine Arts	8.00	8.00		
Accident & Sickness Insurance	35.00	35.00		
TOTAL TUITION & REQUIRED FEES	685.00	2,473.00	635.00	2,423.00
DORMITORY ROOM RENT	839.00	839.00	862.00	862.00
BOARD PLAN (7-DAY)	896.00	896.00	896.00	896.00

TABLE 5
LIBRARY COMPONENTS, FALL 1982

LIBRARY COMPONENTS	AMOUNT
PERIODICALS & LIBRARY COLLECTIONS	
CURRENT PERIODICAL SUBSCRIPTIONS	3,214
LIBRARY COLLECTION	
BOOKSTOCK	
NUMBER OF VOLUMES	519,909
NUMBER OF TITLES (EXCLUDING DUPLICATE COPIES)	364,596
SEPARATE GOVERNMENT DOCUMENTS COLLECTION	69,792
MICROFORMS-ALL TYPES	
NUMBER OF BOOK TITLES REPRESENTED BY MICROFORMS	36,844
NUMBER OF PERIODICAL TITLES REPRESENTED BY MICROFORM	152
NUMBER OF PHYSICAL UNITS OF MICROFORMS NOT REPORTED ABOVE	155,003
PERIODICALS & AUDIOVISUAL MATERIALS-NUMBER OF TITLES	26,570
ALL OTHER LIBRARY MATERIALS, INCLUDING UNBOUND NON-CURRENT	4,713
LIBRARY OPERATING EXPENDITURES	
SALARIES & WAGES	\$644,078
FRINGE BENEFITS	167,946
WAGES OF STUDENTS ON AN HOURLY BASIS, CHARGED TO THE LIBRARY	10,518
SUPPLIES & MATERIALS	
BOOKS	271,341
PERIODICALS	240,484
MICROFORMS	23,953
AUDIOVISUAL MATERIALS	5,965
ALL OTHER LIBRARY MATERIALS (EXCLUDING MICROFORMS)	1,531
BINDING & REBINDING	13,087
ALL OTHER OPERATING EXPENDITURES	22,030
TOTAL LIBRARY OPERATING EXPENDITURES	\$1,400,933

Facts About the Students

<u>Admissions</u>	<u>Page</u>
TABLE 6 -- Number of Student Applications, Acceptances and Enrollees, Fall, 1982	34
Figure 1 -- First-Time Freshmen, Fall, 1969-1982	35
Figure 2 -- Transfer Students, Fall, 1969-1982	36
Figure 3 -- Graduate Students, Fall, 1975-1982	37
Figure 4 -- First Professional Students, Fall, 1975-1982	38
TABLE 7 -- Mean SAT Scores of Entering Freshmen, 1964-1982	39
TABLE 8 -- High School Class Rank of Entering Freshmen, 1964-1982	40
TABLE 9 -- Undergraduate Transfers into NCCU, 1968-1982	41
TABLE 10 -- Percent of North Carolina Central University Students Enrolled, Graduated, Suspended and Not Enrolled After Initial Entry Year	42
 <u>Enrollment</u>	
TABLE 11 -- General Characteristics of Enrollment, 1980-1982	43
TABLE 12 -- Sex Distribution of Headcount Enrollment, 1926-1982	44
TABLE 13 -- Racial Composition of Headcount Enrollment, 1976-1982	45
TABLE 14 -- Mean Age of Headcount Enrollment, 1975-1982	46
TABLE 15 -- Survey of Undergraduate Enrollment by Age, 1982	47
TABLE 16 -- Survey of Graduate and First-Professional Enrollment by Age, 1982	48
TABLE 17 -- Geographic Origin of Students, 1968-1982	49
TABLE 18 -- Distribution of Students by State, 1982-1983	50
Figure 5 -- Geographic Origin by States of North Carolina Central University Undergraduate Students, 1982-1983	51
TABLE 19 -- County of Origin of Undergraduate, First-Professional and Graduate Students, Fall, 1982	52
Figure 6 -- Geographic Origin by County of North Carolina Central University Undergraduate Students, 1982-1983	53
TABLE 20 -- Percent of New North Carolina Central University Freshmen Enrolled or Graduated	54

Facts About the Students (continued)

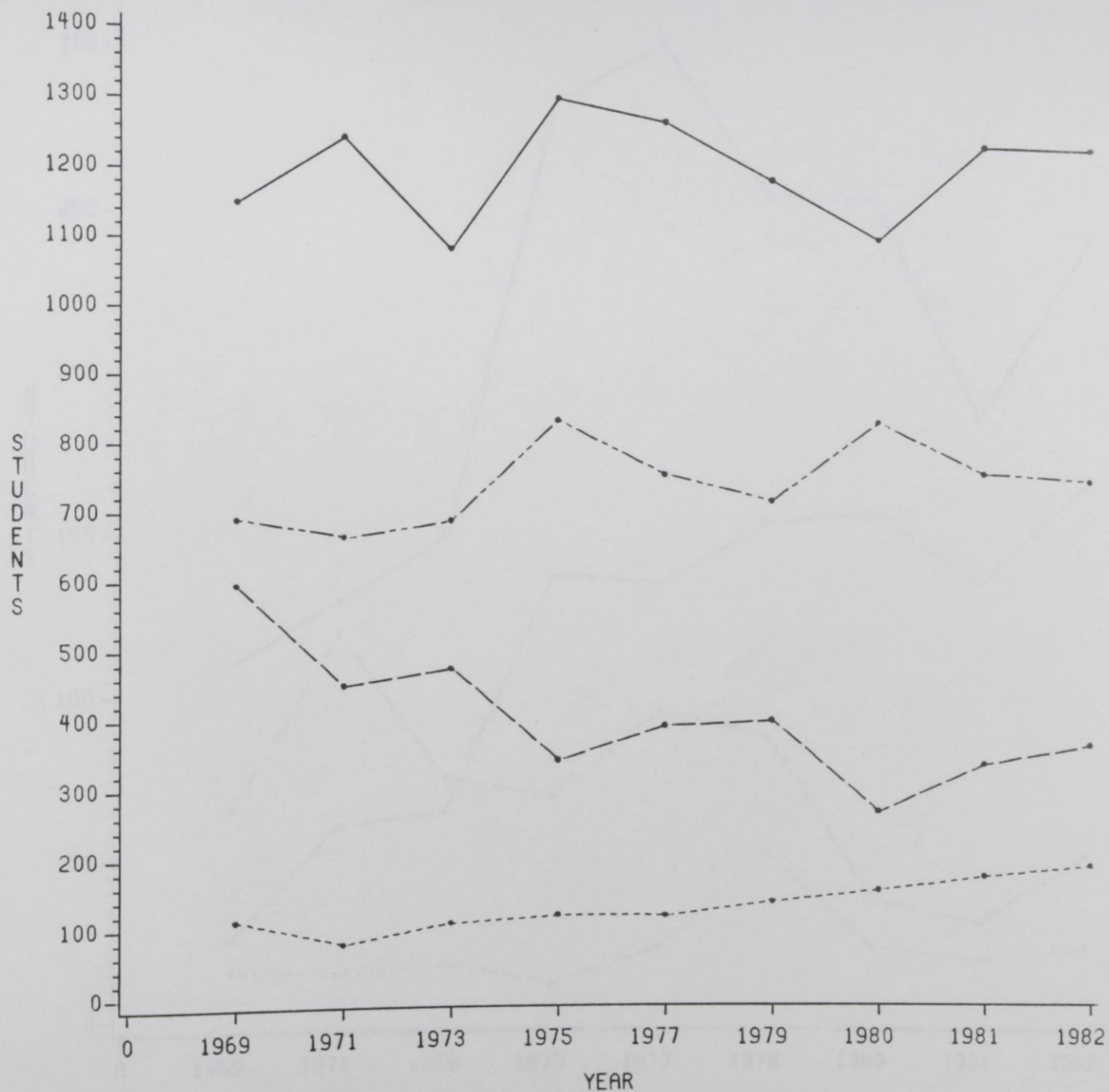
	<u>Page</u>
TABLE 21 -- Percent of New Freshmen in the University of North Carolina System Enrolled or Graduated	54
 <u>Graduation</u>	
TABLE 22 -- Number of Bachelor's Degrees Conferred by Field of Study, 1967-1982	55
TABLE 23 -- Number of Graduate and First-Professional Degrees Conferred by Field of Study, 1967-1982	57
 <u>Financial Aid</u>	
TABLE 24 -- Scholarships, Grants and Awards, 1981-1982	59
TABLE 25 -- Employment of Students at NCCU, 1981-1982	60
TABLE 26 -- Student Loans, 1981-1982	61
TABLE 27 -- Financial Aid Awards, 1980-1982	62

TABLE 6

NUMBER OF STUDENT APPLICATIONS,
ACCEPTANCES AND ENROLLEES, FALL 1982

NEW STUDENTS	IN-STATE				OUT-OF-STATE				TOTAL
	MEN	%	WOMEN	%	MEN	%	WOMEN	%	
FIRST-TIME FRESHMEN									
NUMBER OF APPLICANTS	465		770		166		196		1597
NUMBER ACCEPTED	422	91	729	95	151	91	187	95	1489
NUMBER ACTUALLY ENROLLED	259	61	478	66	72	48	114	61	923
NEW TRANSFERS									
UNDERGRADUATE									
NUMBER OF APPLICANTS	119		125		18		33		295
NUMBER ACCEPTED	112	94	114	91	16	89	27	82	269
NUMBER ACTUALLY ENROLLED	89	79	79	69	7	44	13	48	188
GRADUATE STUDENTS									
NUMBER OF APPLICANTS	47		161		6		15		229
NUMBER ACCEPTED	45	96	154	96	6	100	13	87	218
NUMBER ACTUALLY ENROLLED	36	80	127	82	2	33	4	31	169
FIRST PROFESSIONAL STUDENTS									
NUMBER OF APPLICANTS	158		98		180		89		525
NUMBER ACCEPTED	100	63	71	72	43	24	30	34	244
NUMBER ACTUALLY ENROLLED	57	57	50	70	12	28	9	30	128

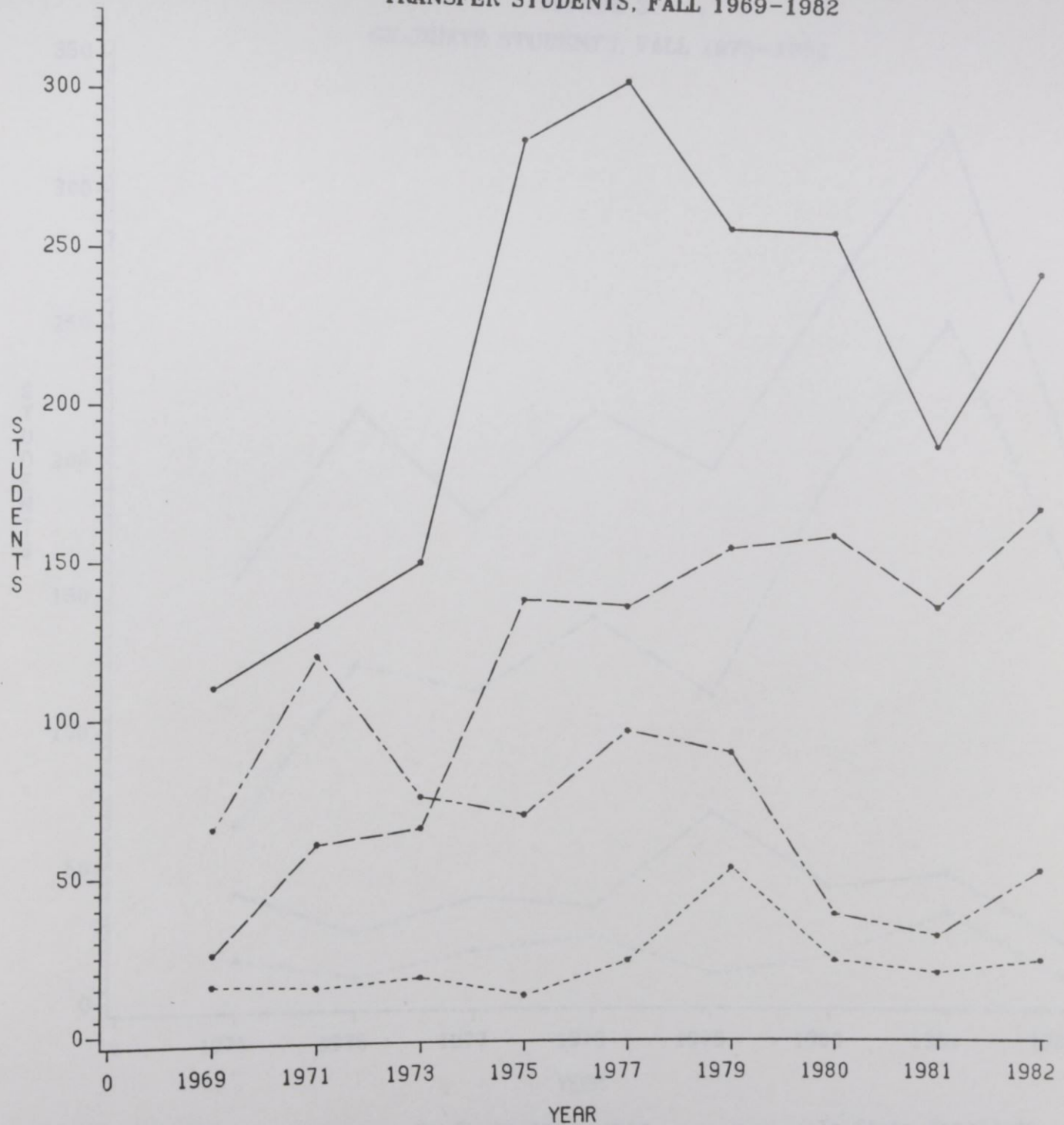
FIGURE 1.
FIRST TIME FRESHMEN, FALL 1969-1982



LEGEND: STATUS

- In State Applicants
- - -•- In State Enrollees
- · - · - Out of State Applicants
- · · · · Out of State Enrollees

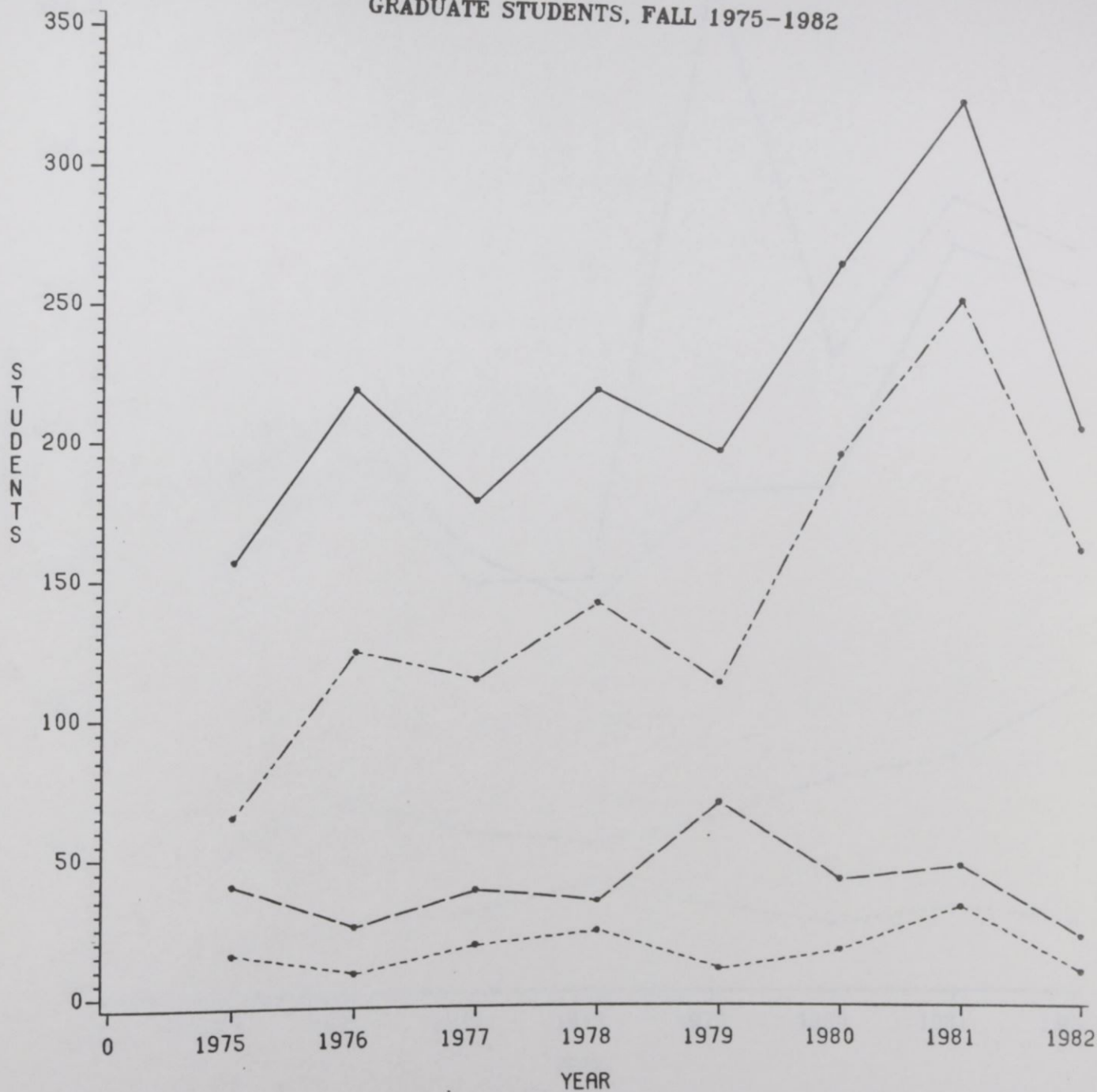
FIGURE 2.
TRANSFER STUDENTS, FALL 1969-1982



LEGEND: STATUS

- In State Applicants
- - -•- Out of State Applicants
- In State Enrollees
- - -•- Out of State Enrollees

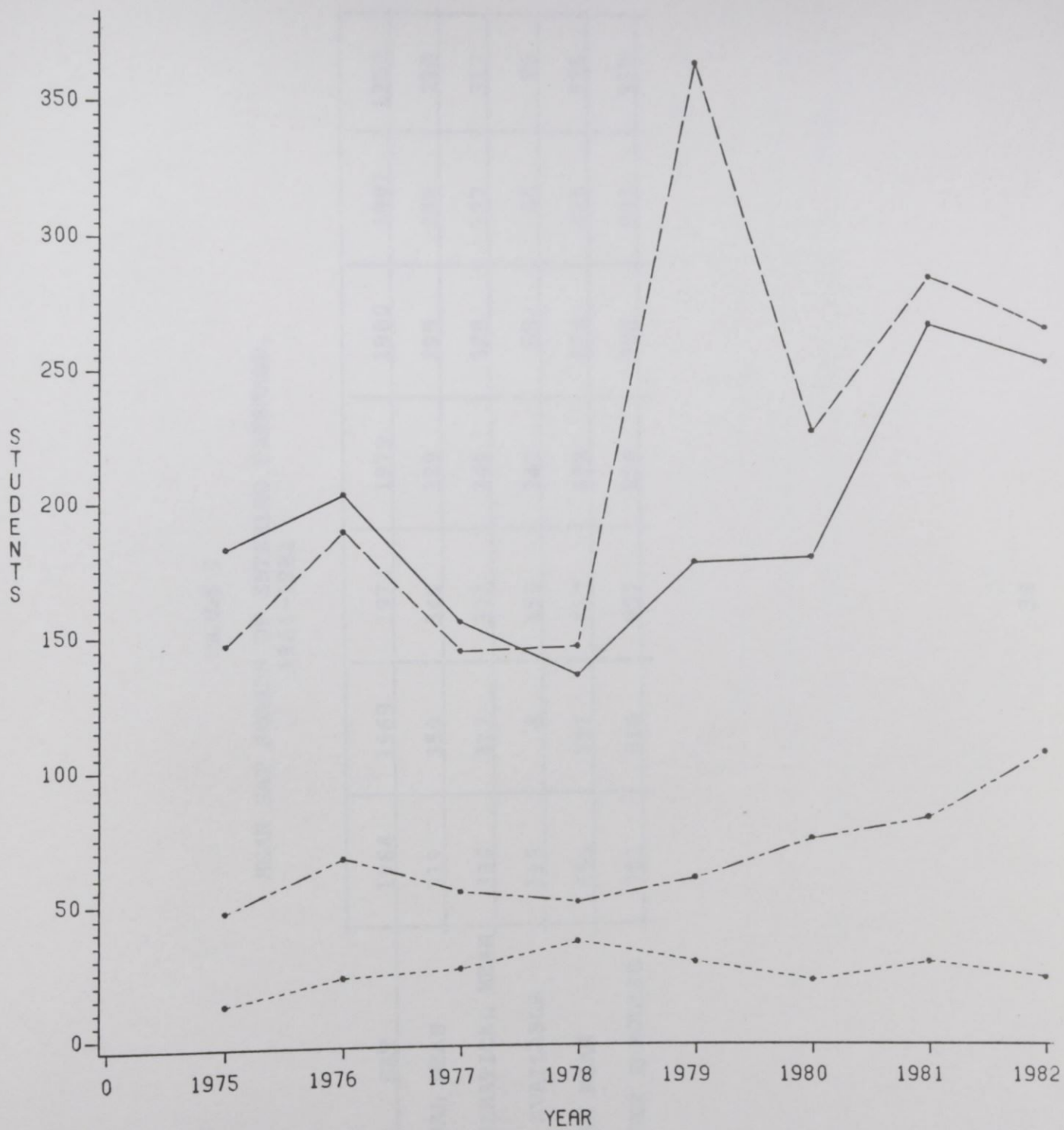
FIGURE 3.
GRADUATE STUDENTS, FALL 1975-1982



LEGEND: STATUS

- In State Applicants
- - -•- In State Enrollees
- - -•- Out of State Applicants
- - -•- Out of State Enrollees

FIGURE 4
 FIRST PROFESSIONAL STUDENTS, FALL 1975-1982



LEGEND: STATUS

—●—	In State Applicants	-.-.-●-.-.-	In State Enrollees
...●...	Out of State Applicants	-.-.-●-.-.-	Out of State Enrollees

TABLE 7
 MEAN SAT SCORES OF ENTERING FRESHMEN,
 1964-1982

SAT	1964	1969	1974	1979	1980	1981	1982
VERBAL MEAN	319	350	346	329	295	298	298
MATHEMATICAL MEAN	336	377	371	349	329	327	327
NOT AVAILABLE	118	8	155	342	58	86	86
TOTAL MEAN	655	727	717	678	624	625	625
NUMBER ENROLLED	701	816	957	854	986	931	918

TABLE 8

HIGH SCHOOL CLASS RANK OF ENTERING
FRESHMEN, 1964-1982

CLASS RANK	1964		1969		CLASS RANK	1974		1979		1980		1981		1982	
	N	%	N	%		N	%	N	%	N	%	N	%	N	%
Highest	394	61	352	43	Highest	165	17	98	11.5	102	10.3	109	11.7	101	11.0
Second	151	23	242	30	Second	225	24	197	23.1	212	21.5	196	21.0	204	22.2
Third	73	11	117	14	Third	197	21	211	24.7	270	27.4	246	26.4	220	24.1
Fourth	23	3	53	7	Fourth	137	14	161	18.9	181	18.4	177	19.0	173	18.8
					Fifth	62	6	32	3.7	52	5.3	68	7.3	60	6.5
Not					Not										
Available	60	2	52	6	Available	171	18	155	18.1	169	17.1	135	14.5	160	17.4
Totals	701	100	816	100	Totals	957	100	854	100	986	100	931	100	918	100

TABLE 9

UNDERGRADUATE TRANSFERS INTO NCCU
1968-1982

INSTITUTION	TRANSFERRED INTO NCCU						
	1968	1972	1974	1978	1980	1981	1982
IN-STATE PUBLIC SENIOR COLLEGES	5	8	21	26	23	26	40
IN-STATE PRIVATE SENIOR COLLEGES	1	7	7	16	26	22	34
IN-STATE PUBLIC COMMUNITY COLLEGES & TECHNICAL INSTITUTES		21	1	61	70	59	60
IN-STATE PRIVATE JUNIOR COLLEGES	1	14	19	26	5	6	3
OUT-OF-STATE INSTITUTIONS		19	39	27	76	41	50
UNKNOWN							2
TOTAL	7	69	87	156	200	154	189

TABLE 10

PERCENT OF NORTH CAROLINA CENTRAL UNIVERSITY STUDENTS
ENROLLED , GRADUATED, SUSPENDED, AND NOT ENROLLED
AFTER INITIAL ENTRY YEAR

CLASS	YEAR OF ENTRY					
	1977	1978	1979	1980	1981	1982
FRESHMEN	N=867	N=837	N=854	N=986	N=930	N=918
ENROLLED	77%	75%	74%	71%	66%	
GRADUATED	0%	0%	0%	0%	0%	
SUSPENDED	7%	7%	8%	11%	6%	
NOT ENROLLED	16%	18%	17%	28%	27%	
LOWER LEVEL TRANSFERS	N=77	N=83	N=121	N=119	N=102	N=146
ENROLLED	71%	67%	68%	67%	68%	
GRADUATED	3%	0%	1%	0%	1%	
SUSPENDED	5%	5%	4%	6%	2%	
NOT ENROLLED	23%	27%	27%	27%	29%	
UPPER LEVEL TRANSFERS	N=88	N=73	N=85	N=62	N=53	N=42
ENROLLED	65%	71%	55%	66%	64%	
GRADUATED	0%	0%	0%	2%	4%	
SUSPENDED	0%	0%	4%	0%	0%	
NOT ENROLLED	35%	29%	41%	32%	30%	
FIRST PROFESSIONAL	N=83	N=83	N=87	N=94	N=109	N=128
ENROLLED	78%	80%	89%	54%	78%	
GRADUATED	0%	0%	0%	0%	0%	
SUSPENDED	0%	0%	0%	0%	0%	
NOT ENROLLED	21%	20%	11%	46%	22%	
MASTERS	N=115	N=121	N=214	N=218	N=277	N=157
ENROLLED	47%	60%	42%	47%	46%	
GRADUATED	1%	4%	2%	1%	5%	
SUSPENDED	0%	0%	0%	0%	0%	
NOT ENROLLED	52%	36%	56%	52%	49%	

TABLE 11

GENERAL CHARACTERISTICS OF ENROLLMENT,
1980 - 1982

CHARACTERISTICS	1980					1981					1982							
	MEN	%	WOMEN	%	TOTAL	%	MEN	%	WOMEN	%	TOTAL	%	MEN	%	WOMEN	%	TOTAL	%
UNDERGRADUATE	579	11.8	889	18.1	1468	29.9	536	10.9	921	18.6	1457	29.5	615	12.3	953	19.1	1568	31.4
FRESHMEN	522		796		1318		480		790		1270		547		824		1371	
Full-Time	522		796		1318		480		790		1270		547		824		1371	
Part-Time	57		93		150		56		131		187		68		129		197	
SOPHOMORE	393	8.0	585	11.9	978	19.9	467	9.4	731	14.8	1198	24.2	350	7.0	630	12.6	980	19.6
Full-Time	355		531		886		436		669		1105		325		585		910	
Part-Time	38		54		92		31		62		93		25		45		70	
JUNIOR	283	5.8	422	8.6	705	14.4	252	5.1	430	8.7	682	13.8	289	5.8	478	9.6	767	15.4
Full-time	246		373		619		222		387		609		255		416		671	
Part-Time	37		49		86		30		43		73		34		62		96	
SENIOR	211	4.3	368	7.5	579	11.8	204	4.1	348	7.1	552	11.2	203	4.1	377	7.6	580	11.6
Full-Time	163		305		468		175		289		464		172		316		488	
Part-Time	48		63		111		29		59		88		31		61		92	
SPECIAL	72	1.5	194	3.9	266	5.4	49	1.0	130	2.6	179	3.6	64	1.3	184	3.7	248	5.0
Full-Time	21		63		84		16		56		72		17		26		43	
Part-Time	51		131		182		33		74		107		47		158		205	
TOTAL	1538	31.3	2458	50.1	3996	81.4	1508	30.5	2560	51.7	4068	82.3	1521	30.5	2622	52.5	4143	83.0
Full-Time	1307		2068		3375		1329		2191		3520		1316		2167		3483	
Part-Time	231		390		621		179		369		548		205		455		660	
GRADUATE	205	4.2	471	9.6	676	13.8	194	3.9	428	8.7	622	12.6	159	3.2	394	7.9	553	11.1
Full-Time	80		145		225		59		117		176		45		101		146	
Part-Time	125		326		451		135		311		446		114		293		407	
FIRST- PROFESSIONAL	154	3.1	84	1.7	238	4.8	161	3.3	93	1.9	254	5.1	172	3.4	122	2.4	294	5.9
Full-Time	134		65		199		149		83		232		154		102		256	
Part-Time	20		19		39		12		10		22		18		20		38	
TOTALS	1897	38.6	3013	61.4	4910	100.0	1863	37.7	3081	62.3	4944	100.0	1852	37.1	3138	62.9	4990	100.0
Full-Time	1521		2278		3799		1537		2391		3928		1515		2370		3885	
Part-Time	376		735		1111		326		690		1016		337		768		1105	
TOTAL FTE	1721		2670		4391		1715		2755		4470		1702		2774		4476	

TABLE 12
SEX DISTRIBUTION OF HEADCOUNT
ENROLLMENT, 1926-1982

FALL SEMESTER	MALE		FEMALE		TOTAL
	N	%	N	%	ENROLLMENT
1926	8	25	24	75	32
1930	148	28	382	72	530
1935	138	23	472	77	610
1940	245	34	475	66	720
1945	253	30	601	70	854
1950	567	44	726	56	1293
1955	576	41	823	59	1399
1960	785	40	1170	60	1955
1965	950	39	1539	61	2489
1970	1182	38	1967	62	3149
1975	1568	40	2332	60	3900
1976	1933	41	2832	59	4765
1977	1901	39	2954	61	4855
1978	1891	39	2919	61	4810
1979	1915	39	3002	61	4917
1980	1897	39	3013	61	4910
1981	1863	38	3081	62	4944
1982	1852	37	3138	63	4990

TABLE 13

RACIAL COMPOSITION OF HEADCOUNT
ENROLLMENT, 1976 - 1982

<u>YEAR</u>	<u>BLACK</u>	<u>%</u>	<u>WHITE</u>	<u>%</u>	<u>OTHER</u>	<u>%</u>	<u>TOTAL</u>
1976	4314	90.0	366	8.0	85	2.0	4765
1977	4482	92.0	360	7.0	13	.3	4855
1978	4276	89.0	451	9.0	83	2.0	4810
1979	4323	87.9	511	10.4	83	1.7	4917
1980	4320	88.0	502	10.2	88	1.8	4910
1981	4313	87.2	539	10.9	92	1.9	4944
UNDERGRADUATE	3727	91.6	277	6.8	64	1.6	4068
GRADUATE	446	71.7	152	24.4	24	3.9	622
PROFESSIONAL	140	55.1	110	43.3	4	1.6	254
1982	4285	85.9	609	12.2	96	1.9	4990
UNDERGRADUATE	3764	90.9	309	7.4	70	1.7	4143
GRADUATE	380	68.7	153	27.7	20	3.6	553
PROFESSIONAL	141	48.0	147	50.0	6	2.0	294

TABLE 14
MEAN AGE OF HEADCOUNT ENROLLMENT,
1975-1982

YEAR	UNDERGRADUATE							GRADUATE AND FIRST PROFESSIONAL						
	MEN		WOMEN		TOTAL			MEN		WOMEN		TOTAL		
	FULL-	PART-	FULL-	PART-	FULL-	PART-		FULL-	PART-	FULL-	PART-	FULL-	PART-	
	TIME	TIME	TIME	TIME	TIME	TIME	TOTAL	TIME	TIME	TIME	TIME	TIME	TIME	TOTAL
1975	22	26	20	28	21	26	21	28	30	26	31	27	31	29
1976	22	28	20	28	20	28	21	28	31	26	32	27	32	30
1977	22	27	21	27	21	27	22	28	32	27	32	28	32	30
1978	22	27	21	29	22	28	22	28	33	28	32	28	32	30
1979	22	27	23	28	22	27	23	30	32	29	33	30	33	31
1980	21	27	21	29	21	28	22	28	32	28	32	28	32	30
1981	21	28	21	30	21	29	22	29	32	28	33	28	32	31
1982	22	28	22	30	22	30	23	29	34	29	34	29	34	31

TABLE 15
SURVEY OF UNDERGRADUATE ENROLLMENT BY
AGE, 1982

AGE	IN-STATE								OUT-OF-STATE							
	MEN				WOMEN				MEN				WOMEN			
	FULL-		PART-		FULL-		PART-		FULL-		PART-		FULL-		PART-	
	TIME		TIME		TIME		TIME		TIME		TIME		TIME		TIME	
	N	%	N	%	N	%	N	%	N	%	N	%	N	%	N	%
LESS THAN 18	11	.2			23	.5	4	.1	5	.1			14	.3		
18	172	4.1	4	.09	383	9.2	38	.9	48	1.2			88	2.1	5	.01
19	176	4.2	10	.2	341	8.2	19	.4	47	1.1	2	.04	74	1.8	3	.07
20	210	5.1	9	.2	353	8.5	13	.3	38	.9			54	1.3	3	.07
21	179	4.3	6	.1	314	7.6	18	.4	39	.9	3	.07	34	.8	2	.04
22	112	2.7	18	.4	130	3.1	24	.6	26	.6	1	.02	15	.4	4	.09
23	44	1.0	13	.3	59	1.4	18	.4	12	.3	1	.02	11	.3	1	.02
24	26	.6	20	.5	33	.8	19	.4	6	.1	1	.02	4	.09	1	.02
25-30	108	2.6	64	1.5	114	2.7	96	2.3	16	.4	1	.02	9	.2	1	.02
31-35	18	.4	33	.8	54	1.3	80	1.9	4	.09						
36-40	11	.3	11	.3	39	.9	45	1.1					1	.02	1	.02
41-50	7	.2	6	.1	15	.4	41	1.0								
51-64			1	.02	5	.1	14	.3							1	.02
65 AND OVER	1	.02	1	.02			4	.1								
UNKNOWN																
TOTAL	1075	25.7	196	4.5	1863	44.7	433	10.2	241	5.7	9	0.2	304	7.3	22	0.4

TABLE 16
 SURVEY OF GRADUATE AND FIRST
 PROFESSIONAL ENROLLMENT BY AGE, 1982

AGE	IN-STATE								OUT-OF-STATE							
	MEN				WOMEN				MEN				WOMEN			
	FULL-		PART-		FULL-		PART-		FULL-		PART-		FULL-		PART-	
	TIME		TIME		TIME		TIME		TIME		TIME		TIME		TIME	
	N	%	N	%	N	%	N	%	N	%	N	%	N	%	N	%
LESS THAN 18																
18																
19					1	.1										
20																
21	1	.1			3	.3			1	.1			2	.2		
22	13	1.5	1	.1	21	2.5	3	.3	4	.5			4	.5		
23	14	1.6	2	.2	24	2.8	12	1.4	4	.5			7	.8		
24	21	2.5	7	.8	12	1.4	21	2.5	3	.3	4	.5	3	.3	3	.3
25-30	69	8.1	35	4.1	61	7.2	103	12.2	14	1.6	2	.2	9	1.1	4	.5
31-35	29	3.4	36	4.2	24	2.8	64	7.5	7	.8	2	.2	3	.3		
36-40	7	.8	18	2.1	22	2.6	43	5.1	3	.3					1	.1
41-50	5	.6	21	2.5	6	.7	47	5.5	2	.2						
51-64	2	.2	4	.5	1	.1	12	1.4								
65 AND OVER																
UNKNOWN																
TOTAL	161	18.8	124	14.5	175	20.5	305	35.9	38	4.3	8	.9	28	3.2	8	.9

TABLE 17

GEOGRAPHIC ORIGIN OF STUDENTS,
1968-1982

GEOGRAPHIC ORIGIN	1968		1971		1974		1977		1980		1981		1982	
	N	%	N	%	N	%	N	%	N	%	N	%	N	%
COUNTY OF LOCATION (DURHAM)	512	17	880	24	1096	25	1231	25	1219	25	1198	24	1259	25
ADJACENT COUNTIES	295	10	421	11	528	12	653	14	700	14	676	14	694	14
OTHER N.C. COUNTIES	1777	58	2033	55	2320	53	2477	51	2420	49	2409	49	2379	48
OUT-OF-STATE	458	15	389	10	447	10	494	10	571	12	592	12	585	12
TERRITORIES													1	
FOREIGN											69	1	72	1
TOTALS	3042	100	3723	100	4391	100	4855	100	4910	100	4944	100	4990	100

GEOGRAPHIC ORIGIN BY STATES

TABLE 18

DISTRIBUTION OF STUDENTS BY STATE
1982 - 1983

STATE	NUMBER	%	STATE	NUMBER	%
Alabama	5	.10	Nebraska	0	
Alaska	1	.02	Nevada	0	
Arizona	0		New Hampshire	0	
Arkansas	1	.02	New Jersey	93	1.90
California	4	.10	New Mexico	0	
Colorado	1	.02	New York	110	2.20
Connecticut	10	.20	North Carolina	4332	86.80
Delaware	3	.10	North Dakota	0	
District of Columbia	60	1.20	Ohio	7	.10
Florida	10	.20	Oklahoma	0	
Georgia	15	.30	Oregon	0	
Hawaii	0		Pennsylvania	32	.60
Idaho	0		Rhode Island	1	.02
Illinois	8	.20	South Carolina	51	1.00
Indiana	0		South Dakota	0	
Iowa	1	.02	Tennessee	4	.10
Kansas	1	.02	Texas	1	.02
Kentucky	0		Utah	0	
Louisiana	1	.02	Vermont	0	
Maine	0		Virginia	77	1.50
Maryland	49	1.00	Washington	2	.04
Massachusetts	13	.30	West Virginia	1	.02
Michigan	12	.20	Wisconsin	8	.20
Minnesota	0		Wyoming	0	
Mississippi	2	.04	U.S. Territories	1	.02
Missouri	1	.02	Foreign Countries	72	1.40
Montana	0				
			TOTAL	4990	100.00

TABLE 19

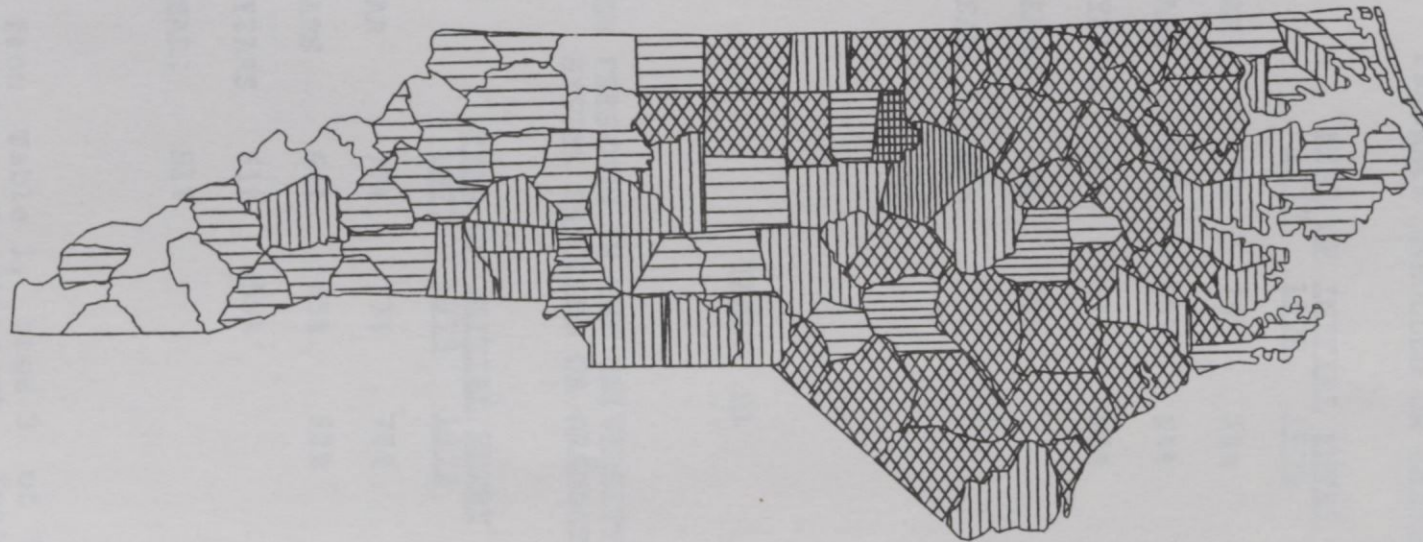
COUNTY OF ORIGIN OF UNDERGRADUATE, FIRST PROFESSIONAL,
AND GRADUATE STUDENTS, FALL 1982

COUNTY	NUMBER	COUNTY	NUMBER	COUNTY	NUMBER	COUNTY	NUMBER
ALAMANCE	46	CUMBERLAND	142	JOHNSTON	25	RANDOLPH	10
ALEXANDER	3	CURRITUCK	1	JONES	22	RICHMOND	19
ALLEGHANY	1	DARE		LEE	20	ROBERSNON	53
ANSON	24	DAVIDSON	22	LENOIR	48	ROCKINGHAM	27
ASHE	3	DAVIE	3	LINCOLN	10	ROWAN	21
AVERY		DUPLIN	46	MCDOWELL	2	RUTHERFORD	6
BEAUFORT	24	DURHAM	1259	MACON		SAMPSON	44
BERTIE	36	EDGECOMBE	80	MADISON		SCOTLAND	31
BLADEN	35	FORSYTH	82	MARTIN	28	STANLEY	9
BRUNSWICK	15	FRANKLIN	32	MECKLENBURG	159	STOKES	7
BUNCOMBE	21	GASTON	20	MITCHELL	2	SURRY	1
BURKE	6	GATES	9	MONTGOMERY	5	SWAIN	
CABARRUS	13	GRAHAM	1	MOORE	21	TRANSYLVANIA	2
CALDWELL	4	GRANVILLE	86	NASH	55	TYRELL	7
CAMDEN	5	GREENE	8	NEW-HANOVER	64	UNION	10
CARTERET	8	GUILFORD	106	NORTHAMPTON	54	VANCE	55
CASWELL	24	HALIFAX	92	ONSLow	38	WAKE	350
CATAWBA	15	HARNETT	26	ORANGE	157	WARREN	59
CHATHAM	31	HAYWOOD	3	PAMLICO	13	WASHINGTON	18
CHEROKEE		HENDERSON	6	PASOUOTANK	20	WATAUGA	2
CHOWAN	16	HERTFORD	53	PENDER	36	WAYNE	121
CLAY		HOKE	10	PEROUIMANS	5	WILKES	4
CLEVELAND	17	HYDE	4	PERSON	70	WILSON	64
COLUMBUS	30	IREDELL	11	PITT	42	YADKIN	
CRAVEN	34	JACKSON	1	POLK	2	YANCEY	
						TOTAL	4332

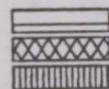
Figure 6.

GEOGRAPHIC ORIGIN BY COUNTY

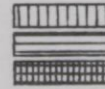
NORTH CAROLINA CENTRAL UNIVERSITY
UNDERGRADUATE STUDENTS
1982-1983



LEGEND: COUNT



1 TO 10
26 TO 100
201 TO 300



11 TO 25
101 TO 200
GREATER THAN 1000

OFFICE OF RESEARCH, EVALUATION AND PLANNING

TABLE 20

PERCENT OF NEW NORTH CAROLINA CENTRAL UNIVERSITY
FRESHMEN ENROLLED OR GRADUATED

	<u>YEAR OF INITIAL ENTRY</u>				
	<u>1977</u>	<u>1978</u>	<u>1979</u>	<u>1980</u>	<u>1981</u>
AFTER ONE YEAR	77%	75%	74%	71%	66%
AFTER TWO YEARS	64%	60%	64%	62%	
AFTER THREE YEARS	58%	57%	58%		
AFTER FOUR YEARS	49%	49%			
AFTER FIVE YEARS	45%				

TABLE 21

PERCENT OF NEW FRESHMEN IN THE UNIVERSITY OF NORTH CAROLINA
SYSTEM ENROLLED OR GRADUATED *

	<u>YEAR OF INITIAL ENTRY</u>			
	<u>1977</u>	<u>1978</u>	<u>1979</u>	<u>1980</u>
AFTER ONE YEAR	77%	77%	78%	76%
AFTER TWO YEARS	64%	65%	62%	
AFTER THREE YEARS	61%	59%		
AFTER FOUR YEARS	51%			

* Adapted from Table 1, page 3 of "Comparative Student Attrition Among Constituent Institutions of the University of North Carolina System," by Timothy R. Sanford, Office of Institutional Research, U.N.C.- Chapel Hill, August, 1982.

TABLE 22

NUMBER OF BACHELOR'S DEGREES CONFERRED
BY FIELD OF STUDY, 1967-1982

DISCIPLINE, DIVISION AND SPECIALTY	1967		1972		1977		1978		1980		1981		1982	
	N	%	N	%	N	%	N	%	N	%	N	%	N	%
<u>BIOLOGICAL SCIENCES</u>														
BIOLOGY, GENERAL	19	5.9	24	4.1	30	4.8	27	4.2	24	4.2	20	3.5	22	4.5
<u>BUSINESS AND MANAGEMENT</u>														
ACCOUNTING	12	3.7	30	5.2	26	4.1	29	4.5	38	6.6	36	6.3	25	5.1
BUSINESS ECONOMICS	10	3.1	1	.2	3	.5	10	1.5	5	.9	1	.2		
BUSINESS MANAGEMENT AND ADMINISTRATION	4	1.2	50	8.6	119	18.9	128	19.8	94	16.3	106	18.4	74	15.1
SECRETARIAL STUDIES	5	1.6	4	.7										
<u>EDUCATION</u>														
ART EDUCATION			5	.9										
BUSINESS, COMMERCE & DISTRIBUTIVE EDUCATION	35	10.9	59	10	22	3.5	35	5.4	34	5.9	30	5.2	14	2.8
ELEMENTARY EDUCATION, GENERAL			27	4.6	68	11	58	9.0	63	10.9	59	10.2	53	10.8
HEALTH EDUCATION	24	7.5	14	2.4	22	3.5	12	1.9	12	2.1	7	1.2	12	2.4
HOME ECONOMICS EDUCATION	17	5.3	7	1.2	7	1.1								
MUSIC EDUCATION	3	.9	12	2.1										
NURSERY/KINDERGARTEN EDUCATION	3	.9	6	1										
PHYSICAL EDUCATION	18	5.6	29	5	15	2.4	21	3.2	12	2.1	13	2.3	10	2.0
RECREATIONAL EDUCATION					23	3.7								
<u>FINE AND APPLIED ARTS</u>														
ART (DRAWING, SCULPTURE)	2	.6	5	.9	11	1.8	1	.2	13	2.2	13	2.3	12	2.4
DRAMATIC ARTS			6	1	1	.2	3	.5	2	3.5	9	1.6	2	.4
FINE ARTS (GENERAL)					10	1.6	5	.8	11	1.9	11	2.0	9	1.8
MUSIC (LIBERAL ARTS)														
VISUAL COMMUNICATIONS														
<u>FOREIGN LANGUAGES</u>														
FRENCH	20	6.2	5	.9	1	.2	2	.3	1	.2	1	.2		
GERMAN			1	.2			1	.2						
SPANISH			4	.7			2	.3	2	.3	1	.2		
<u>HEALTH PROFESSIONS</u>														
NURSING	4	1.2	13	2.2	41	6.5	37	5.7	39	6.8	35	6.1	23	4.7
<u>HOME ECONOMICS</u>														
CLOTHING AND TEXTILES			6	1.0	8	1.3	27	4.2	13	2.2	6	1.0	10	2.0
FOODS AND NUTRITION			2	.3	1	.2	7	1.1	4	.6	6	1.0		
HOME ECONOMICS, GENERAL			10	1.7	3	.5	4	.6	9	1.6	10	1.7	9	1.8

TABLE 22 (continued)
 NUMBER OF BACHELOR'S DEGREES CONFERRED
 BY FIELD OF STUDY, 1967-1982

DISCIPLINE, DIVISION AND SPECIALTY	1967		1972		1977		1978		1980		1981		1982	
	N	%	N	%	N	%	N	%	N	%	N	%	N	%
LETTERS														
ENGLISH, GENERAL	27	8.4	21	3.6	23	3.7	8	1.2	22	3.8	19	3.3	19	3.9
PHILOSOPHY					1	2			1	.2			2	.4
MATHEMATICS														
MATHEMATICS, GENERAL	12	3.7	13	2.2	9	1.4	8	1.2	3	.5	7	1.2	7	1.4
PHYSICAL SCIENCE														
CHEMISTRY	6	1.9	7	1.2	4	.6	8	1.2			6	1.0	5	1.0
PHYSICS			2	.3			2	.3						
PSYCHOLOGY														
PSYCHOLOGY, GENERAL	13	4.1	22	3.8	39	6.2	31	4.8	12	2.1	25	4.3	17	3.5
PUBLIC AFFAIRS AND SERVICES														
LAW ENFORCEMENT AND CORRECTIONS					23	3.7	40	6.2	34	5.9	46	8.0	52	10.6
PUBLIC ADMINISTRATION							17	2.7	51	8.9				
PARKS & RECREATION									21	3.6	14	2.4	15	3.1
SOCIAL SCIENCES														
AFRO-AMERICAN STUDIES														
HISTORY	27	8.3	44	7.6	20	3.2	23	3.6	12	2.1	7	1.2	8	2.0
GEOGRAPHY	17	5.3	14	2.4	9	1.4	9	1.4	5	.9	15	2.6	10	2.0
POLITICAL SCIENCE AND GOVERNMENT	7	2.2	30	5.2	55	8.8	52	.8	17	3.0	55	9.5	58	11.8
SOCIAL SCIENCE, GENERAL	2	.6	3	.5	4	.6							1	.2
SOCIOLOGY	35	10.9	106	18.2	31	4.9	35	5.4	22	3.8	18	3.1	21	4.3
TOTAL	322	100	582	100	630	100	647	100	576	100	576	100	490	100

TABLE 23

NUMBER OF GRADUATE AND FIRST
PROFESSIONAL DEGREES CONFERRED BY
FIELD OF STUDY, 1967-1982

DISCIPLINE, DIVISION AND SPECIALTY	1967		1972		1978		1980		1981		1982	
	N	%	N	%	N	%	N	%	N	%	N	%
<u>BIOLOGICAL SCIENCES</u>												
BIOLOGY, GENERAL	5	3.7	4	3	2	.8	3	1.4	5	2.3	6	2.4
<u>BUSINESS AND MANAGEMENT</u>												
BUSINESS AND COMMERCE			7	5.2								
BUSINESS ECONOMICS												
BUSINESS MANAGEMENT AND ADMINISTRATION			6	4.4	18	7.4	16	7.6	18	8.3	18	7.3
<u>EDUCATION</u>												
BUSINESS, COMMERCE & DISTRIBUTIVE EDUCATION	13	9.7	5	3.7	6	2.5	11	5.2	3	1.4	5	2.0
EDUCATION OF THE EMOTIONALLY DISTURBED					1	.4						
EDUCATION OF THE MENTALLY RETARDED			13	9.6	23	9.5						
EDUCATIONAL ADMINISTRATION AND SUPERVISION	3	2.2	7	5.2	7	2.9	11	5.2	14	6.4	9	3.7
EDUCATIONAL MEDIA			1	.7	10	4.1	4	1.9	4	1.8	9	3.7
ELEMENTARY EDUCATION(GENERAL)	52	39.9	8	5.9	22	9.0	5	2.3	2	.9	17	7.0
HOME ECONOMICS EDUCATION	5	3.8			3	1.2						
MUSIC EDUCATION	3	2.2										
PHYSICAL EDUCATION	7	5.2	3	2.2	3	1.2	3	1.4	4	1.8	6	2.4
RECREATION EDUCATION												
SPECIAL EDUCATION, GENERAL							35	16.7	18	8.3	31	12.7
SPEECH CORRECTION			1	.7	7	2.9	3	1.4	5	2.3	6	2.4
STUDENT PERSONNEL, GUIDANCE & COUNSELING	8	6.0	12	8.9	39	16.0	25	11.9	35	16.0	29	11.8
SIXTH YEAR PROGRAO	4	3.0										
<u>FINE AND APPLIED ARTS</u>												
MUSIC (LIBERAL ARTS)			5	3.7	1	.4			5	2.3		
<u>FOREIGN LANGUAGE</u>												
FRENCH	1	.7	1	.7								
<u>HOME ECONOMICS</u>												
HOME ECONOMICS, GENERAL			2	1.5	5	2.1	3	1.4	2	.9	2	.8
<u>LAW</u>												
JURIS DOCTOR'S	18	13.4	33	24.4	54	22.3	45	21.4	67	30.7	63	26.0
<u>LETTERS</u>												
ENGLISH, GENERAL	2	1.5	2	1.5	4	1.6	6	2.9			4	1.6

NORTH CAROLINA CENTRAL UNIVERSITY
OFFICE OF THE REGISTRAR
DURHAM, NORTH CAROLINA

FINAL DEGREES FOR MAY 1983

Undergraduates by Degrees

Bachelor of Arts -----	235
Bachelor of Science -----	70
Bachelor of Science in Home Economics -----	22
Bachelor of Science in Nursing -----	28
Bachelor of Business Administration -----	<u>96</u>
<u>Total Undergraduates by Degrees</u>	451

Graduates by Degrees

Master of Arts -----	68
Master of Science -----	19
Master of Education -----	47
Master of Business Administration -----	<u>8</u>
<u>Total Graduates by Degrees</u>	142

Library Science by Degree

Master of Library Science -----	<u>40</u>
<u>Total Library Science Degrees</u>	40

Juris Doctor by Degree

Juris Doctor -----	<u>50</u>
<u>Total Juris Doctor by Degree</u>	50

Bachelor of Laws

Bachelor of Laws -----	<u>1</u>
<u>Total Bachelor of Law</u>	1

TOTAL DEGREES ----- 684

TABLE 23 (continued)

NUMBER OF GRADUATE AND FIRST
PROFESSIONAL DEGREES CONFERRED BY
FIELD OF STUDY, 1967-1982

DISCIPLINE, DIVISION AND SPECIALTY	1967		1972		1978		1980		1981		1982	
	N	%	N	%	N	%	N	%	N	%	N	%
<u>LIBRARY SCIENCE</u>												
LIBRARY SCIENCE, GENERAL			17	12.6	24	9.9	24	11.4	18	8.3	26	10.6
<u>MATHEMATICS</u>												
MATHEMATICS, GENERAL							1	.5			1	.4
<u>PHYSICAL SCIENCE</u>												
CHEMISTRY, GENERAL	3	2.2	2	1.5	2	.8	2	.9	2	.9	1	.4
<u>PSYCHOLOGY</u>												
PSYCHOLOGY, GENERAL							4	1.9	8	3.7	6	2.4
<u>PUBLIC AFFAIRS AND SERVICES</u>												
PARK AND RECREATION MANAGEMENT					2	.8	1.5			2	.8	
<u>SOCIAL SCIENCES</u>												
HISTORY	9	6.7	4	3.0	5	2.0	3	1.4	5	2.3	2	.8
SOCIOLOGY	1	.7	2	1.5	4	1.6	5	2.9	3	1.4	2	.8
<u>TOTAL</u>	134	100	135	100	239	100	210	100	218	100	245	100

TABLE 24

SCHOLARSHIPS, GRANTS AND AWARDS,
1981-1982

FINANCIAL AID	NUMBER	TOTAL AMOUNT	AVERAGE AWARD
UNDERGRADUATE			
NON-ATHLETIC	485	\$238,043	\$490.81
ATHLETIC	106	176,796	1,667.89
SEOG ¹	1332	696,548	522.93
BEOG ²	2807	2,967,761	1,057.27
HPEAA ³ AND NURSING ASSISTANCE	2	400	200.00
LAW SCHOOL			
ASSISTANCE TO PROFESSIONAL STUDENTS	38	52,075	1,370.39
GRADUATE SCHOOL			
FELLOWSHIPS, TRAINEESHIPS, GRANTS & SCHOLARSHIPS			
ASSISTANTSHIPS	54	40,048	741.63

1 - Supplemental Education Opportunity Grant; 2 - Basic Educational Opportunity Grant; 3 - Health Professions Education Assistance Act

TABLE 25

EMPLOYMENT OF STUDENTS AT NCCU,
1981-1982

EMPLOYMENT	NUMBER	AMOUNT	AVERAGE AWARD
UNDERGRADUATE			
COLLEGE WORK-STUDY	1123	\$548,711	\$488.61
PACE JOBS	60	73,543	1,225.72
OTHER STUDENT EMPLOYMENT	109	56,723	520.39
GRADUATE SCHOOL			
COLLEGE WORK-STUDY	2	988	494.00
PACE JOBS	1	1,172	1,172.00
OTHER STUDENT EMPLOYMENT	4	1,400	350.00
LAW SCHOOL			
COLLEGE WORK-STUDY			
PACE JOBS			
OTHER STUDENT EMPLOYMENT	2	800	400.00

TABLE 26
STUDENT LOANS, 1981-1982

TYPES OF LOANS	NUMBER	AMOUNT	AVERAGE AWARD
UNDERGRADUATE			
NDS ¹ LOANS			
HPEAA ² LOANS			
NURSING LOANS	10	\$2,575	\$257.50
GRADUATE SCHOOL			
NDS LOANS			
LAW SCHOOL			
NDS LOANS			
OUT OF STATE GSL ³	290	\$688,597	\$2,374.47

1 - National Direct Student; 2 - Health Professions Education Assistance Act;
3 - Guaranteed Student Loans

TABLE 26
STUDENT LOANS, 1981-1982

TYPES OF LOANS	NUMBER	AMOUNT	AVERAGE AWARD
UNDERGRADUATE			
NDS ¹ LOANS			
HPEAA ² LOANS			
NURSING LOANS	10	\$2,575	\$257.50
GRADUATE SCHOOL			
NDS LOANS			
LAW SCHOOL			
NDS LOANS			
OUT OF STATE GSL ³	290	\$688,597	\$2,374.47

1 - National Direct Student; 2 - Health Professions Education Assistance Act;
3 - Guaranteed Student Loans

TABLE 27

FINANCIAL AID AWARDS
1980 - 1982

	<u>1980-1981</u>	<u>1981-1982</u>
TOTAL NUMBER OF APPLICANTS	5131	4341
APPLICANTS WHO ACTUALLY ENROLLED	3996	3694
NUMBER OF AWARDS AND LOANS	8109	7389
UNDUPLICATED NUMBER OF AID RECIPIENTS	4636	4003
DOLLAR AMOUNT OF AWARDS AND LOANS	\$6,985,464	\$6,924,042
MEAN AWARD	\$861	\$937
MEAN AWARD PER RECIPIENT	\$1,507	\$1,730

Facts About Faculty and Staff

Page

All Instructional Faculty

TABLE 28	-- Instructional Staffing Patterns by Department and Rank, Fall, 1972-1982	64
TABLE 29	-- Summary of Instructional Faculty by Academic Rank, Fall, 1982	72

Full-Time Instructional Faculty

TABLE 30	-- Highest Earned Degree for Full-Time Faculty by Department, Fall, 1982	73
TABLE 31	-- Summary: Highest Earned Degrees for Full-Time Faculty, Fall, 1982	75
TABLE 32	-- Tenure for Full-Time Faculty by Department, Fall, 1982	76
TABLE 33	-- Tenure for Full-Time Faculty by Rank and Sex, Fall, 1979-1982	77
TABLE 34	-- Department and Academic Rank by Race and Sex for Full-Time Faculty, Fall, 1982	78
TABLE 35	-- Department and Academic Rank by Race and Sex for Full-Time Faculty, Fall, 1982	86
TABLE 36	-- Mean Salaries by Rank, 1968-1982	87
TABLE 37	-- Mean Salaries of Professors by Race and Sex, 1974-1982	88
TABLE 38	-- Mean Salaries of Associate Professors by Race and Sex, 1974-1982	89
TABLE 39	-- Mean Salaries of Assistant Professors by Race and Sex, 1974-1982	90
TABLE 40	-- Mean Salaries of Instructors by Race and Sex, 1974-1982	91
TABLE 41	-- Summary: Mean Salaries by Rank, by Race and by Sex, Fall, 1982	92

All NCCU Faculty and Staff

TABLE 42	-- Full-Time EPA and SPA by Occupational Activity Category, Race and Sex, Fall, 1982	93
TABLE 43	-- New Full-Time Employees by Race and Sex, Fall, 1982	94
TABLE 44	-- Retirements, Resignations and Dismissals of Full-Time Employees, Fall, 1982	95
TABLE 45	-- Promotion of Full-Time Employees, Fall, 1982	96
TABLE 46	-- Summary: Mean Salaries of Full-Time Staff by Occupational Category, Fall, 1982	97
TABLE 47	-- Mean Salary by Occupational Activity Category, Race and Sex, Fall, 1982	98
TABLE 48	-- Mean Salary of Selected Positions, Fall, 1982	99

TABLE 28

INSTRUCTIONAL STAFFING PATTERNS BY
DEPARTMENT AND RANK, FALL 1972 - 1982

DEPARTMENT AND ACADEMIC RANK	1972	1977	1981	1982			FTE
				FULL-TIME	PART-TIME	TOTAL	
ACADEMIC SKILLS							
Professor							
Associate Professor	1	1	2	2		2	2.0
Assistant Professor		2	1				
Instructor	8	7	11	10		10	10.0
Lecturer		10	3		1	1	.5
Adjunct or Visiting				8		8	8.0
Total	9	20	17	20	1	21	20.5
ACCOUNTING*							
Professor							
Associate			1				
Assistant			3	2		2	2.0
Instructor							
Lecturer			1	1	1	2	1.1
Adjunct or Visiting				3		3	3.0
Total			5	6	1	7	6.1
ART							
Professor			1	1		1	1.0
Associate	1	2	3	3		3	3.0
Assistant	1	3	4	3		3	3.0
Instructor	5						
Lecturer		6	3		1	1	.5
Adjunct or Visiting					1	1	.3
Total	7	11	11	7	2	9	7.8
BIOLOGY							
Professor	6	3	3	3		3	3.0
Associate	3	5	8	7		7	7.0
Assistant	3	3	2	2		2	2.0
Instructor	5						
Lecturer		4	4		5	5	1.4
Adjunct or Visiting				3		3	3.0
Total	16	15	17	15	5	20	16.4

TABLE 28 (CONTINUED)

INSTRUCTIONAL STAFFING PATTERNS BY
DEPARTMENT AND RANK, FALL 1972 -1982

DEPARTMENT AND ACADEMIC RANK	1972	1977	1981	1982			FTE
				FULL-TIME	PART-TIME	TOTAL	
BUSINESS ADMINISTRATION*							
Professor	3	3					
Associate	4	4					
Assistant	10	8					
Instructor	12	10					
Lecturer		14					
Adjunct or Visiting							
Total	29	39					
BUSINESS EDUCATION/ADMIN. SERVICES*							
Professor			2	2		2	2.0
Associate			2	2		2	2.0
Assistant			4	4		4	4.0
Instructor			2	2		2	2.0
Lecturer			1		1	1	.2
Adjunct or Visiting					1	1	.8
Total			11	10	2	12	11.0
CHEMISTRY							
Professor	3	1	3	3		3	3.0
Associate	2	3	2	2		2	2.0
Assistant	3	1	1				
Instructor							
Lecturer		2	2	1	1	2	1.2
Adjunct or Visiting							
Total	8	7	8	7	1	8	7.2
DRAMA							
Professor			1	1		1	1.0
Associate	1	1					
Assistant		1	3	4		4	4.0
Instructor	4	3					
Lecturer		1	1		1	1	.1
Adjunct or Visiting				1		1	1.0
Total	5	6	5	7	1	8	7.1

TABLE 28 (CONTINUED)

INSTRUCTIONAL STAFFING PATTERNS BY
DEPARTMENT AND RANK, FALL 1972 -1982

DEPARTMENT AND ACADEMIC RANK	1972	1977	1981	1982		TOTAL	FTE
				FULL-TIME	PART-TIME		
ECONOMICS/FINANCE*							
Professor			1				
Associate			3	4		4	4.0
Assistant			3	2		2	2.0
Instructor							
Lecturer			1		1	1	.1
Adjunct or Visiting				1		1	1.0
Total			8	7	1	8	7.1
EDUCATION							
Professor	11	8	7	6		6	6.0
Associate	10	10	10	10		10	10.0
Assistant	10	6	5	6		6	6.0
Instructor	5		1	1		1	1.0
Lecturer		9	2		1	1	.5
Adjunct or Visiting				4		2	4.0
Total	36	33	25	27	1	28	27.5
ENGLISH							
Professor	4	3	4	4		4	4.0
Associate	3	7	8	8		8	8.0
Assistant	7	6	6	6		6	6.0
Instructor	11	3	1				
Lecturer		6	2		3	3	1.5
Adjunct or Visiting				2		2	2.0
Total	25	25	21	20	3	23	21.5
GEOGRAPHY							
Professor	1		1	1		1	1.0
Associate		3	3	3		3	3.0
Assistant	2		1	1		1	1.0
Instructor	2						
Lecturer		2					
Adjunct or Visiting							
Total	5	5	5	5		5	5.0

TABLE 28 (CONTINUED)

INSTRUCTIONAL STAFFING PATTERNS BY
DEPARTMENT AND RANK, FALL 1972 -1982

DEPARTMENT AND ACADEMIC RANK	1972	1977	1981	1982			FTE
				FULL-TIME	PART-TIME	TOTAL	
HEALTH EDUCATION							
Professor		1	1	1		1	1.0
Associate	2		1	1		1	1.0
Assistant							
Instructor	3	3	4	3		3	3.0
Lecturer		5	1		2	2	.3
Adjunct or Visiting				1		1	1.0
Total	5	9	6	6	2	8	6.3
HISTORY/SOCIAL SCIENCE							
Professor	3	2	3	3		3	3.0
Associate		4	4	4		4	4.0
Assistant	2	3	1	2		2	2.0
Instructor	7	2	1	1		1	1.0
Lecturer		2	6	1	1	2	1.9
Adjunct or Visiting				1		1	1.0
Total	12	13	15	12	1	13	12.9
HOME ECONOMICS							
Professor	2	1					
Associate	1	2	3	3		3	3.0
Assistant	2	3	5	4		4	4.0
Instructor	5						
Lecturer		5	1		1	1	.6
Adjunct or Visiting					3	3	1.1
Total	10	11	9	7	4	8.7	
LAW							
Professor	7	4	5	5		5	5.0
Associate	1	5	6	6		6	6.0
Assistant	2	5	2	3		3	3.0
Instructor							
Lecturer			1	1	6	7	1.8
Adjunct or Visiting				1		1	1.0
Total	10	14	14	16	6	22	16.8

TABLE 28 (CONTINUED)

INSTRUCTIONAL STAFFING PATTERNS BY
DEPARTMENT AND RANK, FALL 1972 -1982

DEPARTMENT AND ACADEMIC RANK	1972	1977	1981	1982		TOTAL	FTE
				FULL-TIME	PART-TIME		
LIBRARY SCIENCE							
Professor	1	2	2	1		1	1.0
Associate		1	3	3		3	3.0
Assistant	6	2	5	4		4	4.0
Instructor	1	2					
Lecturer		1					
Adjunct or Visiting							
Total	8	8	10	8		8	8.0
MANAGEMENT AND MARKETING*							
Professor			1	1		1	1.0
Associate			3	4		4	4.0
Assistant			3	3		3	3.0
Instructor							
Lecturer			1		1	1	.1
Adjunct or Visiting				1		1	1.0
Total			8	9	1	10	9.1
MATHEMATICS							
Professor	2	2	1	1		1	1.0
Associate	2	2	4	4		4	4.0
Assistant	3	3	3	3		3	3.0
Instructor	3	2	2	2		2	2.0
Lecturer		2	2	1	3	4	1.8
Adjunct or Visiting				1		1	1.0
Total	10	11	12	12	3	15	12.8
MODERN FOREIGN LANGUAGES							
Professor	3	4	2	2		2	2.0
Associate	2	4	6	6		6	6.0
Assistant	11	6	5	5		5	5.0
Instructor	1						
Lecturer		1					
Adjunct or Visiting							
Total	17	15	13	13		13	13.0

TABLE 28 (CONTINUED)

INSTRUCTIONAL STAFFING PATTERNS BY
DEPARTMENT AND RANK, FALL 1972 -1982

DEPARTMENT AND ACADEMIC RANK	1972	1977	1981	1982		TOTAL	FTE
				FULL-TIME	PART-TIME		
MUSIC							
Professor	2	2	1	1		1	1.0
Associate	3	3	5	5		5	5.0
Assistant	1	4	3	5		5	5.0
Instructor	5	2	1	1		1	1.0
Lecturer		5	2	1		1	1.0
Adjunct or Visiting					1	1	.8
Total	11	16	12	13	1	14	13.8
NURSING							
Professor							
Associate	2	1	2	1		1	1.0
Assistant	10	7	7	9		9	9.0
Instructor	3	1	4	4		4	4.0
Lecturer		5	2		2	2	.2
Adjunct or Visiting							
Total	15	14	15	14	2	16	14.2
PHILOSOPHY AND LATIN							
Professor	1						
Associate		1	1	1		1	1.0
Assistant	1	1	1	1		1	1.0
Instructor							
Lecturer							
Adjunct or Visiting							
Total	2	2	2	2		2	2.0
PHYSICAL EDUCATION							
Professor	2	2	2	2		2	2.0
Associate	2	3	2	3		3	3.0
Assistant	7	9	10	9		9	9.0
Instructor	9	3	2	1		1	1.0
Lecturer		1	4	3	1	4	3.9
Adjunct or Visiting				1	1	2	1.7
Total	20	18	20	19	2	21	20.6

TABLE 28 (CONTINUED)

INSTRUCTIONAL STAFFING PATTERNS BY
DEPARTMENT AND RANK, FALL 1972 -1982

DEPARTMENT AND ACADEMIC RANK	1972	1977	1981	1982		TOTAL	FTE
				FULL-TIME	PART-TIME		
PHYSICS							
Professor	2	3	2	3		3	3.0
Associate	2	1	1	1		1	1.0
Assistant	1						
Instructor							
Lecturer		3	1	1		1	1.0
Adjunct or Visiting				3		3	3.0
Total	5	7	4	8		8	8
POLITICAL SCIENCE							
Professor	1	1	2	1		1	1.0
Associate	1	2	4	4		4	4.0
Assistant	5	5	4	4		4	4.0
Instructor	1		1				
Lecturer		10	2		1	1	.3
Adjunct or Visiting				2		2	2.0
Total	10	18	13	11	1	12	11.3
PSYCHOLOGY							
Professor	2						
Associate	1	3	3	3		3	3.0
Assistant	1						
Instructor	1		1	1		1	1.0
Lecturer		2		1	2	3	1.2
Adjunct or Visiting							
Total	5	5	4	5	2	7	5.2
SOCIOLOGY							
Professor	4	1	1	1		1	1.0
Associate			3	3		3	3.0
Assistant	3	4	4	3		3	3.0
Instructor	4						
Lecturer			1				
Adjunct or Visiting				1		1	1.0
Total	11	5	9	8		8	8.0

TABLE 28 (CONTINUED)

INSTRUCTIONAL STAFFING PATTERNS BY
DEPARTMENT AND RANK, FALL 1972 -1982

DEPARTMENT AND ACADEMIC RANK	1972	1977	1981	1982			FTE
				FULL-TIME	PART-TIME	TOTAL	
SUMMARY BY RANK AND YEAR							
Professor	53	43	46	43		43	43.0
Associate Professor	62	68	93	93		93	93.0
Assistant Professor	88	82	86	86		86	86.0
Instructor	106	38	30	26		26	26.0
Lecturer		96	44	11	36	47	21.8
Adjunct or Visiting				33	7	40	36.7
Grand Total	309	327	299	292	43	335	306.5
GRAND TOTAL BY ACADEMIC YEAR	309	327	299	292	43	335	306.5

* Prior to 1978, the School of Business included the departments of Accounting, Business Education, Business Administration and Economics. The School was reorganized in 1978 and faculty from Business Education and Business Administration were split into the departments of Business Educational/Administrative Services and Management and Marketing.

TABLE 29

SUMMARY OF INSTRUCTIONAL FACULTY BY
ACADEMIC RANK
FALL 1982

ACADEMIC RANK	FULL-TIME	PART-TIME	TOTAL	FTE
PROFESSOR	44		44	44.00
%	14.0		14.0	15.3
ASSOCIATE PROFESSOR	91		91	91.00
%	28.7		28.7	31.6
ASSISTANT PROFESSOR	87		87	87.00
%	27.5		27.5	30.2
INSTRUCTOR	16		16	16.00
%	5.1		5.1	5.5
LECTURER	11	35	46	21.32
%	3.5	11.1	14.6	7.4
ADJUNCT OR VISITING	25	7	32	28.60
%	7.9	2.2	10.1	10.0
TOTAL INSTRUCTIONAL FACULTY	274	42	316	287.92
%	86.7	13.3	100.0	100.0

TABLE 30

HIGHEST EARNED DEGREE FOR FULL-TIME FACULTY
BY DEPARTMENT, FALL 1982

DEPARTMENT AND HIGHEST DEGREE	NUMBER	DEPARTMENT AND HIGHEST DEGREE	NUMBER
ACADEMIC SKILLS CENTER		LAW	
Doctor's	2	Doctor's	
Master's	18	Master's	
Professional		Professional	16
Bachelor's		Bachelor's	
ACCOUNTING		LIBRARY SCIENCE	
Doctor's		Doctor's	6
Master's	5	Master's	3
Professional	1	Professional	
Bachelor's	1	Bachelor's	
ART		MARKETING AND MANAGEMENT	
Doctor's	2	Doctor's	6
Master's	5	Master's	3
Professional		Professional	
Bachelor's		Bachelor's	
BIOLOGY		MATHEMATICS	
Doctor's	15	Doctor's	6
Master's		Master's	5
Professional		Professional	
Bachelor's		Bachelor's	1
BUSINESS EDUCATION		MODERN FOREIGN LANGUAGE	
Doctor's	6	Doctor's	8
Master's	3	Master's	5
Professional	1	Professional	
Bachelor's		Bachelor's	
CHEMISTRY		MUSIC	
Doctor's	6	Doctor's	8
Master's	1	Master's	3
Professional		Professional	
Bachelor's		Bachelor's	2
DRAMA		NURSING	
Doctor's	1	Doctor's	1
Master's	4	Master's	13
Professional		Professional	
Bachelor's		Bachelor's	

TABLE 30 (continued)

HIGHEST EARNED DEGREE FOR FULL-TIME FACULTY
BY DEPARTMENT, FALL 1982

<u>DEPARTMENT AND HIGHEST DEGREE</u>	<u>NUMBER</u>	<u>DEPARTMENT AND HIGHEST DEGREE</u>	<u>NUMBER</u>
ECONOMICS/FINANCE		PHILOSOPHY/LATIN	
Doctor's	4	Doctor's	1
Master's	3	Master's	
Professional		Professional	
Bachelor's		Bachelor's	1
EDUCATION		PHYSICAL EDUCATION	
Doctor's	18	Doctor's	6
Master's	6	Master's	12
Professional		Professional	
Bachelor's	1	Bachelor's	1
ENGLISH		PHYSICS	
Doctor's	14	Doctor's	8
Master's	6	Master's	
Professional		Professional	
Bachelor's		Bachelor's	
GEOGRAPHY		POLITICAL SCIENCE	
Doctor's	4	Doctor's	8
Master's	1	Master's	2
Professional		Professional	1
Bachelor's		Bachelor's	
HEALTH EDUCATION		PSYCHOLOGY	
Doctor's	3	Doctor's	4
Master's	3	Master's	1
Professional		Professional	
Bachelor's		Bachelor's	
HISTORY/SOCIAL SCIENCE		SOCIOLOGY	
Doctor's	9	Doctor's	4
Master's	3	Master's	4
Professional		Professional	
Bachelor's		Bachelor's	
HOME ECONOMICS			
Doctor's	4		
Master's	3		
Professional			
Bachelor's			

TABLE 31

SUMMARY : HIGHEST EARNED DEGREE FOR
FULL-TIME FACULTY
FALL 1982

DEGREE	1968	1971	1974	1977	1980	1981	1982
DOCTOR'S	84	103	90	133	135	134	154
%	34.0	36.5	38.0	42.8	47.7	50.5	52.7
MASTER'S	159	177	135	169	129	114	112
%	64.4	62.8	57.0	54.3	49.2	43.0	38.4
BACHELOR'S	4	2	12	9	8	4	7
%	1.6	1.7	5.1	2.9	3.1	1.5	2.4
FIRST PROF.						13	19
%						5.0	6.5
GRAND TOTAL	247	282	237	311	262	265	292
%	100.0	100.0	100.0	100.0	100.0	100.0	100.0

TABLE 32

TENURE FOR FULL-TIME FACULTY BY DEPARTMENT
FALL 1982

DEPARTMENT	TENURED	ON TENURE TRACK		NOT ON TRACK		TOTAL
		#	%	#	%	
Academic Skills Center	0			2	10.0	20
Accounting	1	16.7		1	16.7	6
Art	4	57.1		3	42.9	7
Biology	6	40.0		6	40.0	15
Business Education/Admin. Services	2	20.0		7	70.0	10
Chemistry	5	71.4		1	14.3	7
Drama	1	20.0		4	80.0	5
Economics/Finance	3	42.9		3	42.9	7
Education	13	48.1	10	37.0	4	27
English	13	65.0	5	25.0	2	20
Geography	3	60.0	2	40.0	0	5
Health Education	3	50.0	1	16.7	2	33.3
History/Social Science	5	41.7	4	33.3	3	25.0
Home Economics	4	57.1	3	42.9	0	7
Law	5	31.3	9	56.2	2	12.5
Library Science	2	20.0	6	60.0	2	20.0
Marketing and Management	0		8	88.9	1	11.1
Mathematics	8	58.3	3	25.0	2	16.7
Modern Foreign Language	12	92.3	1	7.7	0	13
Music	9	69.2	3	23.1	1	7.7
Nursing	1	7.1	9	64.3	4	28.6
Philosophy and Latin	2	100.0				2
Physical Education	12	63.1	3	15.8	4	21.1
Physics	4	50.0	0		4	50.0
Political Science	4	36.3	5	45.5	2	18.2
Psychology	1	20.0	2	40.0	2	40.0
Sociology	3	37.5	4	50.0	1	12.5
SUMMARY	127	43.2	105	35.7	62	21.1
						294

TABLE 33

TENURE FOR FULL-TIME FACULTY BY RANK AND SEX
FALL 1979 - 1982

ACADEMIC RANK AND YEAR	MALES			FEMALES			TOTALS		
	TOTAL	NUMBER WITH TENURE	PERCENT WITH TENURE	TOTAL	NUMBER WITH TENURE	PERCENT WITH TENURE	GRAND TOTAL	NUMBER WITH TENURE	PERCENT WITH TENURE
1979									
Professor	22	21	95.5	9	9	100.0	31	30	96.8
Associate Professor	39	17	43.6	22	13	59.1	61	30	49.2
Assistant Professor	46	24	52.2	24	19	79.2	70	43	61.4
Instructor	11	2	18.2	32	7	21.9	43	9	20.9
Lecturer	13			16			29		
Total	131	64	48.9	103	48	46.6	234	112	47.9
1980									
Professor	28	24	85.7	9	9	100.0	37	33	89.2
Associate Professor	52	21	40.4	27	15	55.6	79	36	45.6
Assistant Professor	37	23	62.2	26	17	65.4	63	40	63.5
Instructor	6	1	16.7	25	7	28.0	31	8	25.8
Lecturer	6			8			14		
Total	129	69	53.5	95	48	50.5	264	117	44.3
1981									
Professor	29	26	89.6	11	11	100.0	40	37	92.5
Associate Professor	56	24	42.8	29	16	55.2	85	40	47.1
Assistant Professor	37	20	54.0	37	14	37.8	74	34	45.9
Instructor	6	1	16.7	22	7	31.8	28	8	28.6
Lecturer	5			5			10		
Total	133	71	53.4	104	48	46.2	237	119	50.2
1982									
Professor	25	22	88.0	10	10	100.0	35	32	91.4
Associate Professor	55	24	43.6	28	17	60.7	83	41	49.4
Assistant Professor	38	18	47.4	41	15	36.6	79	33	41.8
Instructor	3	1	33.3	21	6	28.6	24	7	29.2
Lecturer	11			13			24		
Total	132	65	49.2	113	48	42.5	245	113	46.1

Note: Data included in this table are for 9-month instructional faculty only. Those on leave are omitted.

TABLE 34

DEPARTMENT AND ACADEMIC RANK BY RACE
AND SEX FOR FULL-TIME FACULTY, FALL 1982

DEPARTMENT AND ACADEMIC RANK	BLACK			WHITE			OTHER			GRAND
	MEN	WOMEN	TOTAL	MEN	WOMEN	TOTAL	MEN	WOMEN	TOTAL	TOTAL
ACADEMIC SKILLS CENTER										
PROFESSOR										
ASSOCIATE PROFESSOR				2		2				2
ASSISTANT PROFESSOR								1	1	10
INSTRUCTOR	1	8	9							
LECTURER					1	1				8
ADJUNCT OR VISITING		7	7							
TOTAL	1	15	16	2	2	4		1	1	20
ACCOUNTING										
PROFESSOR										
ASSOCIATE PROFESSOR										
ASSISTANT PROFESSOR	2		2							2
INSTRUCTOR										
LECTURER				1		1				1
ADJUNCT OR VISITING	1		1	2		2				3
TOTAL	3		3	3		3				6
ART										
PROFESSOR				1		1				1
ASSOCIATE PROFESSOR		1	1	1		1	1		1	3
ASSISTANT PROFESSOR	1	1	2		1	1				3
INSTRUCTOR										
LECTURER										
ADJUNCT OR VISITING										
TOTAL	1	2	3	2	1	3	1		1	7

TABLE 34 (CONTINUED)

DEPARTMENT AND ACADEMIC RANK BY RACE
AND SEX FOR FULL-TIME FACULTY, FALL 1982

DEPARTMENT AND ACADEMIC RANK	BLACK			WHITE			OTHER			GRAND
	MEN	WOMEN	TOTAL	MEN	WOMEN	TOTAL	MEN	WOMEN	TOTAL	TOTAL
BIOLOGY										
PROFESSOR	2		2		1	1				3
ASSOCIATE PROFESSOR	5	1	6				1		1	7
ASSISTANT PROFESSOR	1	1	2							2
INSTRUCTOR										
LECTURER										
ADJUNCT OR VISITING		2	2				1		1	3
TOTAL	8	4	12		1	1	2		2	15
BUSINESS EDUCATION/ADMIN SERVICES										
PROFESSOR		1	1	1		1				2
ASSOCIATE PROFESSOR		1	1		1	1				2
ASSISTANT PROFESSOR	1	2	3		1	1				4
INSTRUCTOR		2	2							2
LECTURER										
ADJUNCT OR VISITING										
TOTAL	1	6	7	1	2	3				10
CHEMISTRY										
PROFESSOR	1		1	2		2				3
ASSOCIATE PROFESSOR	1		1				1		1	2
ASSISTANT PROFESSOR	1		1							1
INSTRUCTOR										
LECTURER	1		1							1
ADJUNCT OR VISITING										
TOTAL	4		4	2		2	1		1	7

TABLE 34 (CONTINUED)

DEPARTMENT AND ACADEMIC RANK BY RACE
AND SEX FOR FULL-TIME FACULTY, FALL 1982

DEPARTMENT AND ACADEMIC RANK	BLACK			WHITE			OTHER			GRAND
	MEN	WOMEN	TOTAL	MEN	WOMEN	TOTAL	MEN	WOMEN	TOTAL	TOTAL
DRAMA										
PROFESSOR				1		1				1
ASSOCIATE PROFESSOR										
ASSISTANT PROFESSOR	1	2	3		1	1				4
INSTRUCTOR										
LECTURER										
ADJUNCT OR VISITING										
TOTAL	1	1	2	1	1	2				4
ECONOMICS										
PROFESSOR										
ASSOCIATE PROFESSOR				4		4				4
ASSISTANT PROFESSOR	2		2	1		1				3
INSTRUCTOR										
LECTURER										
ADJUNCT OR VISITING				1		1				1
TOTAL	2		2	6		6				8
EDUCATION										
PROFESSOR	2		2	2	1	3	1		1	6
ASSOCIATE PROFESSOR	1	2	3	2	5	7				10
ASSISTANT PROFESSOR	4	2	6							6
INSTRUCTOR		1	1							1
LECTURER										
ADJUNCT OR VISITING		3	3		1	1				4
TOTAL	7	8	15	4	7	11	1		1	27

TABLE 34 (CONTINUED)

DEPARTMENT AND ACADEMIC RANK BY RACE
AND SEX FOR FULL-TIME FACULTY, FALL 1982

DEPARTMENT AND ACADEMIC RANK	BLACK			WHITE			OTHER			GRAND
	MEN	WOMEN	TOTAL	MEN	WOMEN	TOTAL	MEN	WOMEN	TOTAL	TOTAL
ENGLISH										
PROFESSOR		1	1	1	2	3				4
ASSOCIATE PROFESSOR	1	3	4	1	3	4				8
ASSISTANT PROFESSOR	2	2	4	2		2				6
INSTRUCTOR										
LECTURER										
ADJUNCT OR VISITING		1	1		1	1				2
TOTAL	3	7	10	4	6	10				20
GEOGRAPHY										
PROFESSOR	1		1							1
ASSOCIATE PROFESSOR	2		2	1		1				3
ASSISTANT PROFESSOR	1		1							1
INSTRUCTOR										
LECTURER										
ADJUNCT OR VISITING										
TOTAL	4		4	1		1				5
HEALTH EDUCATION										
PROFESSOR	1		1							1
ASSOCIATE PROFESSOR	1		1							1
ASSISTANT PROFESSOR										
INSTRUCTOR		2	2	1		1				3
LECTURER										
ADJUNCT OR VISITING		1	1							1
TOTAL	2	3	5	1		1				6

TABLE 34 (CONTINUED)

DEPARTMENT AND ACADEMIC RANK BY RACE
AND SEX FOR FULL-TIME FACULTY, FALL 1982

DEPARTMENT AND ACADEMIC RANK	BLACK			WHITE			OTHER			GRAND
	MEN	WOMEN	TOTAL	MEN	WOMEN	TOTAL	MEN	WOMEN	TOTAL	TOTAL
HISTORY/SOCIAL SCIENCE										
PROFESSOR	2	1	3							3
ASSOCIATE PROFESSOR	2	1	3		1	1				4
ASSISTANT PROFESSOR	2		2							2
INSTRUCTOR	1		1							1
LECTURER		1	1							1
ADJUNCT OR VISITING	1		1							1
TOTAL	8	3	11		1	1				12
HOME ECONOMICS										
PROFESSOR										
ASSOCIATE PROFESSOR	1	2	3							3
ASSISTANT PROFESSOR	1	3	4							4
INSTRUCTOR										
LECTURER										
ADJUNCT OR VISITING										
TOTAL	2	5	7							7
LAW										
PROFESSOR	1		1	3	1	4				5
ASSOCIATE PROFESSOR	3		3	2	1	3				6
ASSISTANT PROFESSOR	2	1	3							3
INSTRUCTOR										
LECTURER					1	1				1
ADJUNCT OR VISITING		1	1							1
TOTAL	6	2	8	5	3	8				16

TABLE 34 (CONTINUED)

DEPARTMENT AND ACADEMIC RANK BY RACE
AND SEX FOR FULL-TIME FACULTY, FALL 1982

DEPARTMENT AND ACADEMIC RANK	BLACK			WHITE			OTHER			GRAND
	MEN	WOMEN	TOTAL	MEN	WOMEN	TOTAL	MEN	WOMEN	TOTAL	TOTAL
LIBRARY SCIENCE										
PROFESSOR	1		1	1		1				2
ASSOCIATE PROFESSOR	1	1	2	1		1				3
ASSISTANT PROFESSOR		4	4							4
INSTRUCTOR										
LECTURER										
ADJUNCT OR VISITING										
TOTAL	2	5	7	2		2				9
MARKETING AND MANAGEMENT										
PROFESSOR							1		1	1
ASSOCIATE PROFESSOR	2		2	2		2				4
ASSISTANT PROFESSOR				1		1	1	1	2	3
INSTRUCTOR										
LECTURER										
ADJUNCT OR VISITING	1		1							1
TOTAL	3		3	3		3	2	1	3	9
MATHEMATICS										
PROFESSOR	1		1							1
ASSOCIATE PROFESSOR	1	1	2	2		2				4
ASSISTANT PROFESSOR	2		2	1		1				3
INSTRUCTOR		1	1		1	1				2
LECTURER				1		1				1
ADJUNCT OR VISITING		1	1							1
TOTAL	4	3	7	4	1	5				12
MODERN FOREIGN LANGUAGE										

TABLE 34 (CONTINUED)

DEPARTMENT AND ACADEMIC RANK BY RACE
AND SEX FOR FULL-TIME FACULTY, FALL 1982

DEPARTMENT AND ACADEMIC RANK	BLACK			WHITE			OTHER			GRAND
	MEN	WOMEN	TOTAL	MEN	WOMEN	TOTAL	MEN	WOMEN	TOTAL	TOTAL
PROFESSOR	1		1		1	1				2
ASSOCIATE PROFESSOR	1		1	2	1	3	1	1	2	6
ASSISTANT PROFESSOR	1		1	1	3	4				5
INSTRUCTOR										
LECTURER										
ADJUNCT OR VISITING										
TOTAL	3		3	3	5	8	1	1	2	13
MUSIC										
PROFESSOR					1	1				1
ASSOCIATE PROFESSOR	2	1	3	1	1	2				5
ASSISTANT PROFESSOR	3	1	4	1		1				5
INSTRUCTOR		1	1							1
LECTURER	1		1							1
ADJUNCT OR VISITING										
TOTAL	6	3	9	2	2	4				13
NURSING										
PROFESSOR										
ASSOCIATE PROFESSOR		1	1							1
ASSISTANT PROFESSOR		6	6		3	3				9
INSTRUCTOR		1	1	1	2	3				4
LECTURER										
ADJUNCT OR VISITING										
TOTAL		8	8	1	5	6				14

TABLE 34 (CONTINUED)

DEPARTMENT AND ACADEMIC RANK BY RACE
AND SEX FOR FULL-TIME FACULTY, FALL 1982

DEPARTMENT AND ACADEMIC RANK	BLACK			WHITE			OTHER			GRAND
	MEN	WOMEN	TOTAL	MEN	WOMEN	TOTAL	MEN	WOMEN	TOTAL	TOTAL
PHILOSOPHY										
PROFESSOR										
ASSOCIATE PROFESSOR				1		1				1
ASSISTANT PROFESSOR				1		1				1
INSTRUCTOR										
LECTURER										
ADJUNCT OR VISITING										
TOTAL				2		2				2
PHYSICAL EDUCATION										
PROFESSOR	2		2							2
ASSOCIATE PROFESSOR	2	1	3							3
ASSISTANT PROFESSOR	5	3	8		1	1				9
INSTRUCTOR	1		1							1
LECTURER	3		3							3
ADJUNCT OR VISITING		1	1							1
TOTAL	13	5	18		1	1				19
PHYSICS										
PROFESSOR				2		2	1		1	3
ASSOCIATE PROFESSOR				1		1				1
ASSISTANT PROFESSOR										
INSTRUCTOR										
LECTURER							1		1	1
ADJUNCT OR VISITING				1		1	2		2	3
TOTAL				4		4	4		4	8
POLITICAL SCIENCE										
PROFESSOR							1		1	1

TABLE 34 (CONTINUED)

DEPARTMENT AND ACADEMIC RANK BY RACE
AND SEX FOR FULL-TIME FACULTY, FALL 1982

DEPARTMENT AND ACADEMIC RANK	BLACK			WHITE			OTHER			GRAND
	MEN	WOMEN	TOTAL	MEN	WOMEN	TOTAL	MEN	WOMEN	TOTAL	TOTAL
ASSOCIATE PROFESSOR				3		3	1		1	4
ASSISTANT PROFESSOR	1		1	2	1	3				4
INSTRUCTOR										
LECTURER										
ADJUNCT OR VISITING	2		2							2
TOTAL	3		3	5	1	6	2		2	11
<u>PSYCHOLOGY</u>										
PROFESSOR										
ASSOCIATE PROFESSOR	2		2	1		1				3
ASSISTANT PROFESSOR										
INSTRUCTOR		1	1							1
LECTURER		1	1							1
ADJUNCT OR VISITING										
TOTAL	2	2	4	1		1				5
<u>SOCIOLOGY</u>										
PROFESSOR	1		1							1
ASSOCIATE PROFESSOR	1		1	2		2				3
ASSISTANT PROFESSOR	1	1	2	1		1				3
INSTRUCTOR										
LECTURER										
ADJUNCT OR VISITING		1	1							1
TOTAL	3	2	5	3		3				8

TABLE 35

 DEPARTMENT AND ACADEMIC RANK BY RACE
 AND SEX FOR FULL-TIME FACULTY, FALL 1982

SUMMARY	BLACK			WHITE			OTHER			TOTAL		
	MALE	FEMALE	TOTAL	MALE	FEMALE	TOTAL	MALE	FEMALE	TOTAL	MALE	FEMALE	TOTAL
PROFESSOR	16	3	19	14	7	21	4		4	34	10	44
§	36.4	6.8	43.2	31.8	15.9	47.7	9.1		9.1	77.3	22.7	100.0
ASSOCIATE PROFESSOR	29	16	45	29	13	42	5	1	6	63	30	93
§	31.2	17.2	48.4	31.2	14.0	45.2	5.3	1.1	6.4	67.7	32.2	100.0
ASSISTANT PROFESSOR	34	29	63	11	11	22	1	1	2	46	41	87
§	39.1	33.3	72.4	12.6	12.6	25.2	1.1	1.1	2.2	52.9	47.1	100.0
INSTRUCTOR	3	17	20	2	3	5		1	1	5	21	26
§	12.0	65.4	77.0	7.7	11.5	19.2		3.8	3.8	19.2	80.8	100.0
LECTURER	5	2	7	2	1	3	1		1	8	3	11
§	45.4	18.2	64.0	18.2	9.1	27.3	9.1		9.1	72.7	27.3	100.0
ADJUNCT OR VISITING	5	18	23	4	3	7	3		3	12	21	33
§	15.2	54.5	69.7	12.1	9.1	21.2	9.1		9.1	36.4	63.6	100.0
GRAND TOTAL	92	85	177	62	38	100	14	3	17	168	126	294
§	31.2	29.0	60.2	21.1	13.0	34.0	4.8	1.0	5.8	57.1	42.9	100.0

TABLE 36

*MEAN SALARIES BY RANK, 1968-1982

YEAR	PROFESSOR	ASSOCIATE PROFESSOR	ASSISTANT PROFESSOR	INSTRUCTOR
1968	\$13,221	\$11,208	\$8,972	\$7,474
1969	14,326	12,119	9,595	8,045
1970	15,952	13,326	10,222	8,045
1971	16,663	13,837	10,878	9,078
1972	17,588	14,321	11,248	9,698
1973	18,306	14,842	11,855	9,734
1974	19,353	16,150	13,012	10,950
1975	19,187	15,600	12,937	10,922
1976	20,777	17,069	14,073	11,928
1977	22,641	18,222	15,057	12,790
1978	24,874	19,492	16,240	13,921
1979	26,956	20,656	17,305	14,199
1980	29,735	23,027	19,337	15,415
1981	30,514	24,411	20,718	17,825
1982	31,558	25,491	22,123	18,545

*Salary data based on nine and ten-month full-time instructional faculty only.

TABLE 37

*MEAN SALARIES OF PROFESSORS BY RACE AND
SEX, 1974-1982

YEAR	BLACK		WHITE		OTHER	
	MEN	WOMEN	MEN	WOMEN	MEN	WOMEN
1974	\$20,235	\$19,093	\$19,054	\$16,925	\$18,025	
1975	20,037	19,421	18,754	17,617	18,250	
1976	21,788	20,953	20,140	19,160	19,475	
1977	23,381	22,418	22,842	21,388	20,531	
1978	25,330	25,267	24,229	23,534	25,916	
1979	28,052	27,011	26,521	25,321	25,508	
1980	30,879	31,545	28,834	28,059	29,539	
1981	32,066	31,019	30,257	27,988	29,287	
1982	32,505	32,370	31,742	29,387	30,961	

*Salary data based on nine and ten-month full-time instructional faculty only.

TABLE 38

*MEAN SALARIES OF ASSOCIATE PROFESSORS
BY RACE AND SEX, 1974-1982

YEAR	BLACK		WHITE		OTHER	
	MEN	WOMEN	MEN	WOMEN	MEN	WOMEN
1974	\$16,875	\$16,261	\$16,366	\$14,791	\$16,900	\$14,700
1975	16,053	16,567	15,620	14,923	16,800	14,700
1976	17,322	17,137	17,615	15,949	17,922	16,188
1977	18,528	17,974	18,748	17,314	17,918	17,240
1978	19,726	19,185	20,357	18,358	19,164	18,674
1979	21,128	20,545	21,598	19,100	19,409	20,208
1980	24,039	21,832	23,667	22,157	19,856	23,229
1981	25,272	23,420	24,877	23,439	23,528	
1982	26,318	24,855	26,035	24,773	22,228	24,810

*Salary data based on nine and ten-month full-time instructional faculty only.

TABLE 39

*MEAN SALARIES OF ASSISTANT PROFESSORS
BY RACE AND SEX, 1974-1982

YEAR	BLACK		WHITE		OTHER	
	MEN	WOMEN	MEN	WOMEN	MEN	WOMEN
1974	\$13,706	\$12,822	\$12,454	\$11,931		
1975	13,489	12,952	12,420	11,694		
1976	14,708	13,559	13,717	11,871	16,000	
1977	15,624	14,823	14,589	14,462	17,040	
1978	16,524	16,016	16,329	15,732	17,000	
1979	17,488	17,187	17,336	16,722	17,900	
1980	19,999	19,379	18,940	17,455	18,480	
1981	21,383	20,456	20,142	19,820		
1982	22,546	21,874	22,489	21,133	21,924	24,045

*Salary data based on nine and ten-month full-time instructional faculty only.

TABLE 40

*MEAN SALARIES OF INSTRUCTORS BY RACE AND
SEX, 1974-1982

YEAR	BLACK		WHITE		OTHER	
	MEN	WOMEN	MEN	WOMEN	MEN	WOMEN
1974	\$11,394	\$11,005	\$9,600	\$9,800		
1975	11,132	10,935	10,260	11,450		
1976	12,467	11,983	10,910	12,208		10,781
1977	12,782	12,843	12,972	11,751		13,308
1978	14,708	13,753	14,064	13,117	16,000	13,308
1979	14,674	13,992	15,883	14,020		11,550
1980	12,694	15,844	16,188	16,408		13,705
1981	17,115	17,664	20,221	19,101		
1982	17,821	18,662	17,236	19,941		15,860

*Salary data based on nine and ten-month full-time instructional faculty only.

TABLE 41

*SUMMARY:MEAN SALARIES BY RANK, BY RACE
AND BY SEX, FALL 1982

ACADEMIC RANK	BLACK				WHITE				OTHER			
	MEN		WOMEN		MEN		WOMEN		MEN		WOMEN	
	N	MEAN	N	MEAN	N	MEAN	N	MEAN	N	MEAN	N	MEAN
PROFESSOR	12	\$32,506	3	\$32,370	14	\$31,742	7	\$29,387	2	\$30,961		
ASSOCIATE PROFESSOR	27	26,318	15	24,855	25	26,532	13	24,774	5	22,006	1	24,810
ASSISTANT PROFESSOR	30	22,546	29	21,874	10	22,489	11	21,134	1	21,924	1	24,045
INSTRUCTOR	2	19,395	9	19,832	1	17,236	3	19,941				
LECTURER	4	16,963	2	18,629	2	18,690	1	7,000				
ADJUNCT OR VISITING	5	21,299	9	19,036	4	24,444	2	18,866	3	17,790		

*Salaries are for nine and ten-month full-time instructional faculty only. Those on leave are included.

TABLE 42

FULL-TIME EPA AND SPA BY OCCUPATIONAL
ACTIVITY CATEGORY, RACE AND SEX,
FALL 1982

OCCUPATIONAL ACTIVITY CATEGORY	BLACK		WHITE		OTHER		TOTAL	
	MEN	WOMEN	MEN	WOMEN	MEN	WOMEN	MEN	WOMEN
EXECUTIVE, ADMINISTRATIVE & MANAGERIAL	29	8	2	1	1		32	9
NUMBER OF PERSONS ABOVE WITH ACADEMIC RANK	13	3	1	1	1		15	4
NUMBER OF PERSONS ABOVE WITH TENURE	10	3	1	1	1		12	4
INSTRUCTIONAL FACULTY (TENURED)	44	25	31	22	4	1	79	48
PROFESSORS	15	3	13	7	3		31	10
ASSOCIATE PROFESSORS	11	6	13	10	1	1	25	17
ASSISTANT PROFESSORS	17	11	5	4			22	15
INSTRUCTORS	1	5		1			1	6
LECTURERS								
INSTRUCTIONAL FACULTY (NON TENURED BUT ON TRACK)	36	29	20	10	6	1	62	40
PROFESSORS	1		1		1		3	
ASSOCIATE PROFESSORS	18	10	14	3	4		36	13
ASSISTANT PROFESSORS	17	18	5	7	1	1	23	26
INSTRUCTORS		1						1
LECTURERS								
INSTRUCTIONAL FACULTY (NOT ON TENURE TRACK)	4	8	2	3	1		7	11
PROFESSORS								
ASSOCIATE PROFESSORS								
ASSISTANT PROFESSORS								
INSTRUCTORS	1	3	2	2			3	5
LECTURERS		1						1
OTHER FACULTY	3	4		1	1		4	5
TEACHING & RESEARCH ASSISTANTS								
PROFESSIONAL	17	41	5	4	1	3	23	48
SECRETARIAL & CLERICAL	15	180			1	1	16	181
TECHNICAL & PARAPROFESSIONAL	23	26	1	1			24	27
SKILLED CRAFTS	31	4	3				34	4
SERVICE & MAINTENANCE	74	38	1	2			75	40
TOTAL	273	359	65	43	14	6	352	408

TABLE 43

NEW FULL-TIME EMPLOYEES BY RACE AND SEX,
FALL 1982

OCCUPATIONAL ACTIVITY CATEGORY	BLACK		WHITE		OTHER		TOTAL	
	MEN	WOMEN	MEN	WOMEN	MEN	WOMEN	MEN	WOMEN
EXECUTIVE, ADMINISTRATIVE & MANAGERIAL	3						3	
NUMBER OF PERSONS ABOVE WITH ACADEMIC RANK	1						1	
NUMBER OF PERSONS ABOVE WITH TENURE								
INSTRUCTIONAL FACULTY (TENURED)								
PROFESSORS								
ASSOCIATE PROFESSORS								
ASSISTANT PROFESSORS								
INSTRUCTORS								
LECTURERS								
INSTRUCTIONAL FACULTY (NON-TENURED BUT ON TRACK)	4	6	3	1			7	7
PROFESSORS								
ASSOCIATE PROFESSORS	1	1	1				2	1
ASSISTANT PROFESSORS	3	5	2	1			5	6
INSTRUCTORS								
LECTURERS								
INSTRUCTIONAL FACULTY (NOT ON TENURE TRACK)	2	4		2			2	6
PROFESSORS								
ASSOCIATE PROFESSORS								
ASSISTANT PROFESSORS								
INSTRUCTORS				1				1
LECTURERS								
OTHER FACULTY	2	4		1			2	5
TEACHING & RESEARCH ASSISTANTS								
PROFESSIONAL		3	1				1	3
SECRETARIAL & CLERICAL	1	18					1	18
TECHNICAL & PARAPROFESSIONAL	3	4	1				4	4
SKILLED CRAFTS	2		1				3	
SERVICE & MAINTENANCE	11	3					11	3
TOTAL	26	38	6	3			32	41

TABLE 44

RETIREMENTS, RESIGNATIONS AND DISMISSALS
OF FULL-TIME EMPLOYEES, FALL 1982

OCCUPATIONAL ACTIVITY CATEGORY	BLACK		WHITE		OTHER		TOTAL	
	MEN	WOMEN	MEN	WOMEN	MEN	WOMEN	MEN	WOMEN
EXECUTIVE, ADMINISTRATIVE & MANAGERIAL	1	1	1	2			2	3
NUMBER OF PERSONS ABOVE WITH ACADEMIC RANK	1	1	1	2			2	3
NUMBER OF PERSONS ABOVE WITH TENURE	1		1				2	
INSTRUCTIONAL FACULTY (TENURED)	2	4	2				4	4
PROFESSOR	1	1					1	1
ASSOCIATE PROFESSOR		2	1				1	2
ASSISTANT PROFESSOR	1		1				2	
INSTRUCTOR		1						1
LECTURER								
INSTRUCTIONAL FACULTY (NON-TENURED BUT ON TRACK)	4	5	3	4	1		8	9
PROFESSORS								
ASSOCIATE PROFESSORS			2	2	1		3	2
ASSISTANT PROFESSORS	2	5	1	2			3	7
INSTRUCTORS	2						2	
LECTURERS								
INSTRUCTIONAL FACULTY (NOT ON TENURE TRACK)	1	1	2	1			3	2
PROFESSORS								
ASSOCIATE PROFESSORS								
ASSISTANT PROFESSORS								
INSTRUCTORS		1	2	1			2	2
LECTURERS								
OTHER FACULTY	1						1	
TEACHING & RESEARCH ASSISTANTS								
PROFESSIONAL	4	1	1				5	1
SECRETARIAL & CLERICAL								
TECHNICAL & PARAPROFESSIONAL								
SKILLED CRAFTS								
SERVICE & MAINTENANCE								
TOTAL	12	12	9	7	1		22	19

TABLE 45

PROMOTIONS OF FULL-TIME EMPLOYEES,
FALL 1982

OCCUPATIONAL ACTIVITY CATEGORY	BLACK		WHITE		OTHER		TOTAL	
	MEN	WOMEN	MEN	WOMEN	MEN	WOMEN	MEN	WOMEN
EXECUTIVE, ADMINISTRATIVE & MANAGERIAL	1						1	
NUMBER OF PERSONS ABOVE WITH ACADEMIC RANK	1						1	
NUMBER OF PERSONS ABOVE WITH TENURE	1						1	
INSTRUCTIONAL FACULTY (TENURED)			1				1	
PROFESSORS								
ASSOCIATE PROFESSORS			1				1	
ASSISTANT PROFESSORS								
INSTRUCTORS								
LECTURERS								
INSTRUCTIONAL FACULTY (NON-TENURED BUT ON TRACK)								
PROFESSORS								
ASSOCIATE PROFESSORS								
ASSISTANT PROFESSORS								
INSTRUCTORS								
LECTURERS								
INSTRUCTIONAL FACULTY (NOT ON TENURE TRACK)								
PROFESSORS								
ASSOCIATE PROFESSORS								
ASSISTANT PROFESSORS								
INSTRUCTORS								
LECTURERS								
TEACHING & RESEARCH ASSISTANTS								
PROFESSIONAL								
SECRETARIAL & CLERICAL								
TECHNICAL & PARAPROFESSIONAL								
SKILLED CRAFTS								
SERVICE & MAINTENANCE								
TOTAL	1		1				2	

TABLE 46

SUMMARY: MEAN SALARIES OF FULL-TIME
STAFF BY OCCUPATIONAL ACTIVITY
CATEGORY, FALL 1982

OCCUPATIONAL ACTIVITY CATEGORY	NUMBER	MEAN
EXECUTIVE, ADMINISTRATIVE & MANAGERIAL	41	\$34,026
PROFESSIONAL	71	18,780
TECHNICAL & PARAPROFESSIONALS	51	13,718
CLERICAL & SECRETARIAL	197	12,207
SKILLED CRAFTS	38	14,275
SERVICES & MAINTENANCE	115	8,902

TABLE 47

* MEAN SALARY BY OCCUPATIONAL ACTIVITY
CATEGORY, RACE AND SEX, FALL 1982

OCCUPATIONAL ACTIVITY CATEGORY	BLACK				WHITE				OTHER			
	MEN		WOMEN		MEN		WOMEN		MEN		WOMEN	
	N	MEAN	N	MEAN	N	MEAN	N	MEAN	N	MEAN	N	MEAN
EXECUTIVE, ADMINISTRATIVE & MANAGERIAL	29	34,921	8	31,802	2	28,009	1*		1			
PROFESSIONAL	17	21,557	41	17,888	5	19,154	4	16,361	1		3	17,997
TECHNICAL & PARAPROFESSIONAL	23	14,213	26	13,296	1*		1*					
CLERICAL & SECRETARIAL	15	11,106	180	12,296					1		1	
SKILLED CRAFTS	31	14,270	4	13,656	3	15,148						
SERVICES & MAINTENANCE	74	8,857	38	8,945	1		2	9,212				

*Salaries have been omitted from cells with only one person.

TABLE 48
 MEAN SALARY OF SELECTED POSITIONS,
 FALL 1982

OCCUPATIONAL ACTIVITY CATEGORY	NUMBER	MEAN SALARY
EXECUTIVE OFFICERS	4	\$45,873
DEANS	5	47,753
DIRECTORS	39	29,386
CHAIRPERSONS	25	32,220

APPENDIX

The data used in this book were abstracted from annual North Carolina Higher Education Data Survey forms (NCHED), The University of North Carolina Higher Education General Information Survey forms (HEGIS), and the Office for Civil Rights (OCR) reports. The sources of basic data for each section are listed below.

ENROLLMENT

- NCHED A-1.1 Resident Credit Enrollment, Fall 1982
- OCR 2300-2.3 Fall Enrollment and Compliance Report of Institutions of Higher Education, 1982
- NCHED A-1.6 Survey of Enrollment by Age, Fall 1982
- NCHED A-1.3 "Home Base" of Students, Fall 1982
- NCCU FACT BOOK, 1981-82
- Separate Analyses done by the Office of Institutional Studies

ADMISSIONS

- OCR B1 Students in Institutions of Higher Education - Applications, Acceptances and Actual Enrollment, Fall 1982
- NCHED A-4 Admission Practices, Fall 1982
- NCHED A-1.2 New Undergraduate Transfer Students, Fall 1982
- NCHED A-7 Student Retention Data Survey, Fall 1982
- NCCU FACT BOOK, 1981-82
- Separate Analyses done by the Office of Institutional Studies

DEGREES CONFERRED

- HEGIS 2300-2.1 Degrees and Other Formal Awards Conferred, 1982
- NTE Yearly Reports to the Education Department, 1982

Appendix (continued)

NCCU FACT BOOK, 1981-82

Separate Analyses done by the Office of Institutional Studies

FINANCIAL AID

NCHED A-10

Student Financial Aid Summary, Fall 1982

OCR B3

Financial Assistance to Students in Institutions of Higher Education, Fall 1982

NCCU FACT BOOK, 1981-82

ALL INSTRUCTIONAL FACULTY

HEGIS 2300-3

Salaries, Tenure and Fringe Benefits of Full-Time Instructional Faculty, 1982

NCCU FACT BOOK, 1981-82

Separate Analyses done by the Office of Institutional Studies

FULL-TIME INSTRUCTIONAL FACULTY

HEGIS 2300-3

Salaries, Tenure and Fringe Benefits of Full-Time Instructional Faculty, 1982

NCCU FACT BOOK, 1981-82

Separate Analyses done by the Office of Institutional Studies

FACULTY AND STAFF

OCR A1A

Employees in Institutions of Higher Education, Fall 1982

OCR A1B

New Employees in Institutions of Higher Education, Fall 1982

OCR A3

Retirements, Resignations and Dismissals of Employees in Institutions of Higher Education, Fall 1982

OCR A4

Promotions of Employees in Institutions of Higher Education, Fall 1982

NCCU FACT BOOK, 1981-82

Separate Analyses done by the Office of Institutional Studies

RESOURCES

- NCHED A-11 Report on Sources and Uses of University
Current and Plant Funds, Fiscal Year 1981-82
- HEGIS 2300-4 Financial Statistics of Institutions of
Higher Education for Fiscal Year Ending
1982
- NCHED A-6 College and University Libraries, Fall 1982
- North Carolina Facilities Inventory and
Utilization Reports - 1982; Prepared by
the Office of Institutional Studies
- NCCU FACT BOOK, 1981-82