

# NCCU FACT BOOK

A STATISTICAL ABSTRACT OF  
SIGNIFICANT CHARACTERISTICS  
OF NORTH CAROLINA  
CENTRAL UNIVERSITY 1980-81

Office of Institutional Studies  
North Carolina Central University  
Durham, North Carolina 27707

JULY 1981

Y  $\Sigma$  6  $\Sigma$  4 8  $\mu$  .01  
T 1 4 Q  $\Sigma$  6  $\Sigma$  4 8  $\mu$  .01  
X 2 13 X Y Q Z 6 Z R Z Q  $\Sigma$  XY P 5 R  
NF  $\sigma$  6 M 4 T

NCCU FACT BOOK

STATISTICAL ABSTRACT OF SIGNIFICANT CHARACTERISTICS

OF NORTH CAROLINA CENTRAL UNIVERSITY

1980-81

Office of Institutional Studies  
North Carolina Central University  
Durham, North Carolina 27707

July 1981

## CONTENTS

	<u>Page</u>
General Background and Organization	1
Student Data	
Enrollment	26
Admissions	37
Degrees Conferred	46
Financial Aid	53
Faculty and Staff	
All Instructional Faculty	58
Full-Time Instructional Faculty	72
Faculty and Staff	96
Resources	104
Appendix	109

## NON-DISCRIMINATION STATEMENT OF POLICY

NORTH CAROLINA CENTRAL UNIVERSITY is dedicated to equality of opportunity within its community. Accordingly, NORTH CAROLINA CENTRAL UNIVERSITY does not practice or condone discrimination, in any form, against students, employees, or applicants on the grounds of race, color, national origin, religion, sex, age, or handicap. NORTH CAROLINA CENTRAL UNIVERSITY commits itself to positive action to secure equal opportunity regardless of those characteristics.

NORTH CAROLINA CENTRAL UNIVERSITY supports the protections available to members of its community under all applicable Federal laws, including Titles VI and VII of the Civil Rights Act of 1964, Title IX of the Education Amendments of 1972, Sections 799A and 845 of the Public Health Service Act, the Equal Pay and Age Discrimination Acts, the Rehabilitation Act of 1973, and Executive Order 11246. For information concerning these provisions, contact: Director of Affirmative Action, Room 201, Administration Building, North Carolina Central University, Durham, North Carolina 27707, Telephone 683-6254 or 683-6472.

Originally known as the National Religious Training School and Chautauqua, the university was first chartered in 1909 as a private institution and opened to students on July 10, 1910. The institution's early years were characterized by wealth of enthusiasm and high endeavor, but not of money. Private donations and student fees constituted the total financial support of the school, and the heavy burden of collecting funds rested on one man, the President.

In 1915, the school was sold and reorganized, then becoming the National Training School. During this period, Mrs. Russell Sage of New York was a generous benefactor of the school.

The General Assembly of North Carolina appropriated funds for the purchase and maintenance of the school in 1923; thus in that year it became a publicly-supported institution, and was named Durham State Normal School. Two years later the Legislature converted it into the North Carolina College for Negroes, dedicating it to the offering of liberal arts education and the preparation of teachers and principals for secondary schools.

At its 1927 session, the General Assembly began a program of expansion of the college plant to conform to the needs of an enlarged academic program. The sincere interest of the Honorable Angus W. McLean, then Governor of North Carolina, and his belief in the institution aided greatly in the promotion of this program. State appropriations were supplemented by a generous gift from the late B.N. Duke, and by contributions from citizens of Durham.

The first four-year college class was graduated in 1929. The alumni register of the institution now bears the names of distinguished citizens of the nation, as well as of other worthy individuals who daily contribute significantly to the leadership and development of their local communities.

The University was accredited by the Southern Association of Colleges and Secondary Schools as an "A" class institution in 1937 and was admitted to membership in this association in 1957. It has also been approved by the Association of American Universities and the National Council for the Accreditation of Teacher Education and holds an "A" rating with the American Medical Association and the North Carolina State Department of Public Instruction.

From the 1930's until the beginning of World War II, federal grants and state appropriations enabled the university to begin a new program of physical expansion and improvement of educational facilities.

The General Assembly of 1939 authorized the establishment of graduate work in liberal arts and the professions. Pursuant thereto graduate courses in the Arts and Sciences were first offered in that same year; the School of Law began operation in 1940, and the School of Library Science was established in 1941.

In 1947, the State Legislature changed the name of the institution to the North Carolina College at Durham.

On October 6, 1947, the college suffered irreparable loss through the death of its founder and President, Dr. James E. Shepard. The Board of Trustees appointed an Interim Committee, consisting of Dr. Albert E. Manley, Dean of the College of Arts and Sciences, Miss Ruth G. Rush, Dean of Women, and Dr. Albert L. Turner, Dean of the School of Law, which administered the affairs of the institution until the election of the second president.

Dr. Alfonso Elder was elected President of the institution on January 20, 1948. At the time of his election Dr. Elder was serving as head of the Graduate Department of Education and had formerly been Dean of the College of Arts and Sciences. Dr. Elder retired September 1, 1963.

Dr. Samuel P. Massie was elected as the third President of the College on August 9, 1963, and assumed the office on September 1, 1963. Dr. Massie came to the institution from Washington, D.C., where he was Associate Program Director for Undergraduate Science Education of the National Science Foundation and Professor and Chairman of the Department of Pharmaceutical Chemistry at Howard University. He resigned on February 1, 1966.

The Board of Trustees appointed an Interim Committee, consisting of William Jones, Business Manager, Dr. Helen G. Edmonds, Graduate Dean, and Dr. William H. Brown, Professor of Education, to administer the affairs of the institution until the fourth president took office.

Dr. Albert N. Whiting was named fourth president of the institution on July 20, 1966. He came to North Carolina College from Baltimore, Maryland, where he had served for several years as Dean of Faculty of Morgan State College. Dr. Whiting assumed the office on July 1, 1967.

In 1969, the State Legislature again changed the name of the institution to North Carolina Central University. On July 1, 1972, North Carolina Central University became a constituent institution of the University of North Carolina.

#### MISSION

The primary mission of North Carolina Central University continues to be to educate young men and women who, in their private and professional lives will have the potential to advance the general welfare of all citizens of the State.

Initially founded as an educational institution for black people, the University has consistently demonstrated a capacity to adjust to the changing attitudes and needs of society. During the 70-year span of the life of the

University, the social attitudes have shifted from "separate" to "separate but equal" to "integrated;" and integration has expanded from the "melting pot" concept to include provisions for cultural diversity and ethnic identity. Now, NCCU, along with General Administration and the other campuses of The University, is engaged in an effort to remove the remaining vestiges of the dual system of higher education spawned by the "separate but equal" doctrine.

NCCU has had to demonstrate the flexibility to respond to these changes in attitude. At this juncture in its history, North Carolina Central University subscribes to the belief that its educational pattern must be so shaped as to prepare its students for participation, both professional and lay, in an unsheltered, integrated society and that national performance norms, in all areas, must be the guiding and determinative measures, and the objective should be the maximum possible attainment above these norms.

Acknowledging the fact that for the foreseeable future, at least, the majority of its students will represent the underprivileged, often poorly prepared, non-white and low-income people of the State, the University is committed to developing the kinds of academic and non-academic programs which can bring such students into the mainstream of American society, and which will equip them to enjoy the advantages and responsibilities of first class citizenship, and which, at the same time, will attract and serve effectively the total population of the State.

Implicit in this resolve is the recognition of the need to make special and determined efforts to create such a sense of pride and self-esteem in ethnic and social identification that NCCU constituents want to share rather than jealously guard their ethnic and cultural heritage. Thus, there is the imperative that the educational program emphasize the historical and creative contributions of black people to the nation and the world within the framework of legitimate and relevant academic disciplines and methodologies so that NCCU graduates feel so secure in the value and worth of their own heritage and culture that they have no need to fear or denigrate the culture and heritage of other groups.

North Carolina Central University is, thus, dedicated to the proposition that it must continually seek to become a "realized force" in local community, State and regional developments, and a cultural resource of recognized significance in the eyes of all people. Finally, NCCU operates so that in the not-too-distant future, it will be increasingly viewed, not alone in the image of a predominantly black institution, but also as a dynamic, innovative university with programs effectively responsive to the needs of the State of North Carolina and dedicated to the service of all the citizens--white and non-white--in the southern region.

In his inaugural address on April 27, 1968, the present Chancellor, Dr. Albert N. Whiting, presented a seven-point set of goals for higher education:

1. We should preserve student curiosity, heighten intellectual aspirations, reduce the impersonal quality of college life, and prevail against mere mechanical instruction.

2. We should make every effort to encourage a physical environment and social climate conducive to educational, moral cultural, and esthetic growth.
3. We should regard teaching and positive productive relationships with students on a basis equivalent to the rewards for research and professional publications. Particularly, should this be true at a liberal arts college.
4. We should give concerted attention to the creation of a campus community whose dominant axis of interest is intellectual discovery rather than early specialization and professionalization.
5. We should make the pursuit of intellectual discovery a partnership between junior and senior participants; therefore, we should involve students in shaping the educational environment in which they work, live, and grow.
6. We should extend our teaching beyond the accumulation of academic knowledge to give the students growth in maturity and judgement, so that they can see the relevance of their knowledge to the quality of their own lives and that life in relation to the kinds of judgements they make.
7. We should strive vigorously to develop programs and teaching techniques geared not only for the privileged and the intellectual elite, but for those of less developed intelligence and less advantage. The realities of our society require higher education for the masses. Colleges, therefore, must re-orient their goals and programs to this fact. If they engage students' feelings and intellect...then, hopefully, learning will result in the desired behavioral change.

Toward these ends, sixteen high priority university goals were selected for the 1979-80 year by NCCU's Planning and Budgeting Council:

1. To improve the recruitment system (e.g., to identify and admit a larger number of academically talented students of all races, creeds, colors, age groups, etc.) and to offer scholarships for academic excellence.
2. To establish a reputation that would be more competitive with predominantly white institutions that are currently attracting the caliber of students that we wish to enroll, enabling us to be more competitive in our recruitment efforts.
3. To assure the mastery of basic communication skills and to provide for their continuous reinforcement throughout the University. (p. 32 #1)



4. To broaden a scholarship program designed to attract students of high academic potential without concern for financial need.
5. To acquire the resources necessary to support teaching, research, and learning, both directly through the administration's own efforts, and indirectly through provision of information on funding sources and other matters to faculty and students.
6. To encourage excellence in teaching.
7. To attract and retain highly qualified faculty.
8. To develop and maintain a planning and budgeting process that will ensure that accountability, efficiency and effectiveness are evident in the implementation of the goals and objectives of the University.
9. To assure that all accrediting agency criteria and appropriate professional group standards are met by the departments and schools of the University. (p. 32 #4)
10. To make every effort to encourage a physical environment conducive to educational, moral, cultural, and aesthetic growth.
11. To implement an improved registration system.
12. To continue to strive for high levels of professional training in law, nursing, business, education, and library science.
13. To support and strengthen the academic, research and cultural programs of the University by continuing the efforts of faculty and staff to increase and improve resource development.
14. To maintain the quality and strengthen, as necessary, programs at the master's level.
15. To develop a comprehensive counseling program (e.g. medical, academic, vocational, social, emotional, and financial).
16. To give priority to the employment of additional staff personnel in understaffed areas.

#### ACCREDITATION

North Carolina Central University is accredited as an "A" rated institution by the North Carolina State Department of Public Instruction and the American Medical Association.

It is approved as a whole or through its components by:

## ACADEMIC ORGANIZATION

North Carolina Central University is classified as a comprehensive post-secondary institution. It offers programs at the baccalaureate, master's and first-professional levels. Its instructional programs are organized into these colleges and professional schools: Undergraduate College of Arts and Sciences, Graduate School of Arts and Sciences, School of Business, School of Law, and School of Library Science. Its authorized degree programs are listed on the following pages.

DEGREE PROGRAMS AND PROGRAM TRACKS (Continued)

HEGIS Code	Division and Program Title	Level	Degree and Program Track
0800	<u>EDUCATION</u> (Continued)		
0808	Special Education, General	Master's	M.Ed., Education of Mentally Retarded M.Ed., Education of the Emotionally Disturbed
0815	Speech Correction	Master's	M.Ed., Speech and Hearing Education
0826	Student Personnel (Counseling and Guidance)	Master's	M.A., Student Personnel (Counseling and Guidance) M.A., Career Counseling and Placement M.A., Agency Counseling
0835	Physical Education	Bachelor's	B.S., Physical Education
0835	Physical Education	Master's	M.A., Physical Education M.S., Physical Education, Secondary Education
0837	Health Education (including Family Life Education)	Bachelor's	B.S., Health Education B.S., Community Health Education
0838	Business, Commerce, and Distributive	Bachelor's	B.S.C., Business Education, Secondary Basic B.S.C., Business Education, Secondary Comprehensive
0838	Business, Commerce, and Distributive Education	Master's	M.S., Business Education, Secondary
0893	Educational Administration and Supervision	Master's	M.A., Educational Administration Supervision
0895	Health and Physical Education	Bachelor's	B.S., Physical Education
0897	Educational Media	Master's	M.A., Instructional Media

DEGREE PROGRAMS AND PROGRAM TRACKS (Continued)

HEGIS Code	Division and Program Title	Level	Degree and Program Track
1000	<u>FINE AND APPLIED ARTS</u>		
1002	Art (Painting, Drawing, Sculpture)	Bachelor's	B. A., Art, General B. A., Visual Communications B. A., Art, Fine Art B. A., Art: Art Education
1005	Music (Liberal Arts Program)	Bachelor's	B. A., Music (Liberal Arts Program) B. A., Music: Music Education
1005	Music (Liberal Arts Program)	Master's	M. A., Music (Liberal Arts Program) M. A., Music Education, K-12
1007	Dramatic Arts	Bachelor's	B. A., Dramatic Arts B. A., Dramatic Arts, Secondary Education B. A., Theatre Arts Education, K-12
1100	<u>FOREIGN LANGUAGES</u>		
1102	French	Bachelor's	B. A., French B. A., French, Secondary Education
1102	French	Master's	M. A., French M. A., French, Secondary Education
1103	German	Bachelor's	B. A., German B. A., German, Secondary Education
1105	Spanish	Bachelor's	B. A., Spanish B. A., Spanish, Secondary Education
1200	<u>HEALTH PROFESSIONS</u>		
1203	Nursing	Bachelor's	B. S. N., Nursing

DEGREE PROGRAMS AND PROGRAM TRACKS (Continued)

HEGIS Code	Division and Program Title	Level	Degree and Program Track
1300	<u>HOME ECONOMICS</u>		
1301	Home Economics, General	Bachelor's	B. S. H. E., Home Economics, General B. S. H. E., Home Economics, Secondary Education
1301	Home Economics, General	Master's	M. S., Home Economics Education
1303	Clothing and Textiles	Bachelor's	B. S. H. E., Clothing and Textiles
1306	Foods and Nutrition (including Dietetics)	Bachelor's	B. S. H. E., Foods and Nutrition (including Dietetics)
1400	<u>LAW</u>		
1401	Law, General	Professional	L. L. B., Law J. D., Law
1500	<u>LETTERS</u>		
1501	English, General	Bachelor's	B. A., English B. A., English, Secondary Education
1501	English, General	Master's	M. A., English
1509	Philosophy	Bachelor's	B. A., Philosophy
1600	<u>LIBRARY SCIENCE</u>		
1601	Library Science, General	Master's	M. L. S., Library Science
1700	<u>MATHEMATICS</u>		
	Mathematics, General	Bachelor's	B. S., Mathematics B. S., Mathematics, Secondary Education

DEGREE PROGRAMS AND PROGRAM TRACKS (Continued)

HEGIS Code	Division and Program Title	Level	Degree and Program Track
1700	<u>MATHEMATICS</u> (Continued)		
1701	Mathematics, General	Master's	M. S., Mathematics M. S., Mathematics, Secondary Education
1900	<u>PHYSICAL SCIENCES</u>		
1902	Physics, General (excluding Biophysics)	Bachelor's	B. S., Physics B. S., Physics, Secondary Education
1905	Chemistry, General (excluding Bio-chemistry)	Bachelor's	B. S., Chemistry B. S., Chemistry, Secondary Education
1905	Chemistry, General (excluding Bio-chemistry)	Master's	M. S., Chemistry M. S., Chemistry, Secondary Education
2000	<u>PSYCHOLOGY</u>		
2001	Psychology, General	Bachelor's	B. A., Psychology
2001	Psychology, General	Master's	M. A., Psychology
2100	<u>PUBLIC AFFAIRS AND SERVICES</u>		
2103	Parks and Recreation Management	Bachelor's	B. S., Recreation Administration
2103	Parks and Recreation Management	Master's	M. S., Recreation Administration
2105	Law Enforcement and Corrections	Bachelor's	B. A., Political Science: Criminal Justice
2200	<u>SOCIAL SCIENCES</u>		
2201	Social Sciences, General	Bachelor's	B. A., Social Sciences

DEGREE PROGRAMS AND PROGRAM TRACKS (Continued)

HEGIS Code	Division and Program Title	Level	Degree and Program Track
2200	<u>SOCIAL SCIENCES</u>		
2205	History	Bachelor's	B.A., History B.A., History, Secondary Education
2205	History	Master's	M.A., History M.A., History, Secondary Education
2206	Geography	Bachelor's	B.S., Geography
2207	Political Science and Government	Bachelor's	B.A., Political Science B.S., Political Science
2208	Sociology	Bachelor's	B.A., Sociology
2208	Sociology	Master's	M.A., Sociology
2211	Afro-American (Black Culture) Studies	Bachelors'	B.A., Black Studies

Source:

Academic Program Inventory, The University of North Carolina, July 1978.

THE UNIVERSITY OF NORTH CAROLINA

BOARD OF GOVERNORS

John R. Jordan, Jr.  
Mrs. Hugh Morton  
Louis T. Randolph

Chairperson  
Vice Chairperson  
Secretary

Class of 1981

Mrs. Geneva J. Bowe  
Hugh Cannon  
Phillip G. Carson  
T. Worth Coltrane  
George Watts Hill  
Mrs. Hugh Morton  
Jack O'Kelley  
David J. Whichard, II

Murfreesboro  
Raleigh  
Asheville  
Asheboro  
Durham  
Linville  
Burlington  
Greenville

Class of 1983

Irwin Belk  
Wayne A. Corpening  
Daniel C. Gunter, Jr.  
Mrs. Howard Holderness  
John R. Jordan, Jr.  
J. Aaron Prevost  
Louis T. Randolph  
Harley F. Shuford, Jr.

Charlotte  
Winston-Salem  
Gastonia  
Greensboro  
Raleigh  
Hazelwood  
Washington  
Hickory

Class of 1985

Furman P. Bodenheimer  
Laurence A. Cobb  
John Edwin Davenport  
Charles Z. Flack, Jr.  
James E. Holmes  
Mrs. John L. McCain  
Reginald F. McCoy  
Maceo A. Sloan

Cary  
Charlotte  
Nashville  
Forest City  
Winston-Salem  
Wilson  
Laurinburg  
Durham

Class of 1987

B. Irvin Boyle  
William A. Dees, Jr.  
Mrs. Frank Epps  
Jacob H. Froelich, Jr.  
The Honorable James E. Holshouser  
William A. Johnson  
Robert L. Jones  
E. B. Turner

Charlotte  
Goldsboro  
Lumberton  
High Point  
Southern Pines  
Lillington  
Raleigh  
Lumberton



THE UNIVERSITY OF NORTH CAROLINA  
OFFICERS OF GENERAL ADMINISTRATION

1980-81

William C. Friday	President
Zona C. Norwood	Assistant to the President
R. D. McMillan, Jr.	Assistant to the President for Governmental Affairs
Richard H. Robinson, Jr.	Assistant to the President for Legal Affairs
James L. Jenkins, Jr.	Assistant to the President for Public Information
Arnold K. King	Assistant to the President for Relations with Faculty Assembly, Private Colleges and Universities and the Community College System
George E. Bair	Assistant to the President for University Telecom- munications
David N. Edwards, Jr. Jeffrey H. Orleans	Special Assistants to the President
John P. Kennedy	Secretary of the University
John W. Dunlop	Director, The University of North Carolina Center for Public Television

ACADEMIC AFFAIRS

Raymond H. Dawson	Vice President for Academic Affairs and Senior Vice President
Lloyd Vincent Hackley Robert W. Williams, Jr.	Associate Vice Presidents
Rosanne C. Lipe	Assistant to the Vice President
Louis T. Parker, Jr.	Director, North Carolina Educational Computing Service

FINANCE

L. Felix Joyner	Vice President
Hugh Buchanan Kenniss Grogan	Associate Vice Presidents
Ellen H. Kepley A. P. Winfrey	Assistant Vice Presidents
J. Sibley Dorton, Jr.	Assistant Vice President for Finance and Treasurer
Allen Waters	Assistant Vice President for Finance and University Property Officer
Leon M. Ennis, Jr.	Finance Officer
Milton H. Gupton	Services Officer

PLANNING

Roy Carroll	Vice President
Gary T. Barnes E. Bruce Sigmon, Jr.	Assistant Vice Presidents
Robert F. Hill, Jr.	Director of Information Services
Linda Balfour	Coordinator of Data Collection
Kay Duffy	Coordinator of Special Studies

RESEARCH AND PUBLIC SERVICE PROGRAMS

Donald J. Stedman	Acting Vice President
Charles L. Wheeler	Assistant Vice President Service Programs and Director North Carolina State Commission on Higher Education Facilities
E. Carole Tyler	Director, Educational Information Center
Willard Babcock	Director, Institute for Transportation, Research and Education
Betty Sanders	Coordinator, Title I Programs

STUDENT SERVICES AND SPECIAL PROGRAMS

Cleon F. Thompson

Vice President

John F. Corey

Associate Vice President

Paul B. Marion

Assistant Vice President

Stan C. Broadway

Executive Director  
State Education Assistance Authority

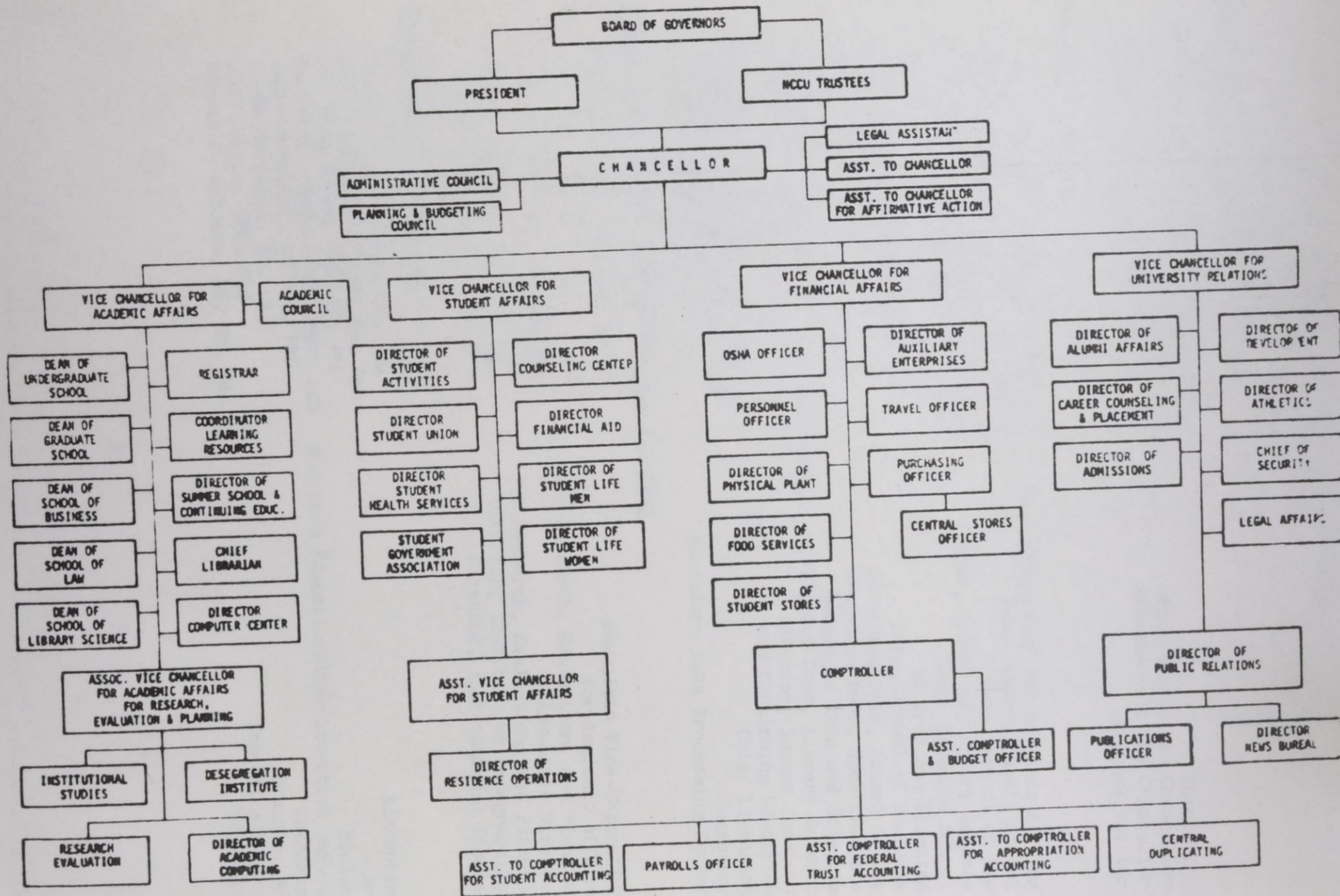
NORTH CAROLINA CENTRAL UNIVERSITY

BOARD OF TRUSTEES

MAY 1, 1981

Frank W. Ballance	Warrenton
Edwin Baker	President, Student Government Association 1980-81 (Ex-Officio Member)
Gail H. Blackburn, III	Durham
George Watts Carr, Jr.	Durham
William A. Clement (Chairperson)	Durham
Robert E. Dawson	Durham
George C. Debnam (Vice-Chairperson)	Raleigh
Hiliary H. Holloway	Philadelphia
June M. Jeffers	Reidsville
Josephine Strayhorne (Secretary)	Durham
Clarence Walker	Charlotte
Alfred Whitesides	Asheville

NCCU ORGANIZATION CHART



OFFICERS AND ADMINISTRATIVE STAFF

1980-81

OFFICE OF THE CHANCELLOR

Albert N. Whiting, AB, MA, PhD, LLD	Chancellor
LaFayette W. Lipscomb, BA, MLS, MS, PhD	Assistant to the Chancellor
William Jones, BS, AM, LLD	Assistant to the Chancellor
William James, BS	Internal Auditor

ACADEMIC AFFAIRS

Cecil L. Patterson, AB, MA, PhD	Vice-Chancellor for Academic Affairs
Walter H. Pattillo, Jr., BS, MS, PhD	Dean, Undergraduate School
Harry E. Groves, BA, JD, LLM	Dean, School of Law
Annette L. Phinazee, AB, BLS, DLS	Dean, School of Library Science
Mary M. Townes, BS, MSPH, MS, PhD	Dean, Graduate School of Arts and Sciences
Tyronza Richmond, BA, MA, PhD	Dean, School of Business
Percy Luney, AB, JD	Assistant Dean, School of Law
George Reid, BA, MA, PhD	Assistant Dean, Undergraduate School of Arts and Sciences
Benjamin F. Speller, Jr., BA, MAT, PhD	Assistant Dean, Library Science
Waltz Maynor, BA, MA, EdD	Director, Summer Sessions and Continuing Education
Pennie E. Perry, BA, MS, MLS	Chief Librarian
Brooklyn T. McMillion, AB, MSPH	Registrar
Lynwood Tharrington, BS, MS	Director, Data Processing Center

Office for Research, Evaluation, and Planning

Norman P. Uhl, BS, MA, PhD	Associate Vice-Chancellor for Academic Affairs for Research, Evaluation, and Planning
Linda K. Pratt, BA, MA, PhD	Associate Director for Research, Evaluation, and Planning
Jeff E. Smith, BA, AM, MA	Director, Institute on Desegregation
Sandy H. Davis, BA, MA	Director, Institutional Studies

Departmental Chairpersons

Raphael N. Thompson, BA, MBA	Accounting
Lana T. Henderson, BA, MA, PhD	Art
Dr. John Ruffin, BS, MS, PhD	Biology
Marion H. Thorne, BSC, MEd, EdD	Business Education/Administrative Service
James Schooler, AB, MS, PhD	Chemistry
Linda Norfleet, BA, MA	Dramatic Art
John Turner, BSC, MEd	Economics/Finance
Norman C. Johnson, BS, MS, EdD	Education

Departmental Chairpersons (continued)

Patsy B. Perry, BA, MA, PhD  
Jasper Harris, BS, MA  
Howard M. Fitts, BS, MSPH, EdD  
Percy Murray, BA, MA, PhD  
Beverly A. Nichols, BS, MS, EdD  
William T. Fletcher, BS, MS, PhD  
Sundar W. Fleming, AB, MBA  
Henri Armand, BA, MA, PhD  
Gene Strassler, BS, MS, MA, PhD  
Johnea D. Kelley, BSN, MA, DPH  
Robert J. Clack, AB, MA, PhD  
Carey Hughley,  
Ki-Hyon Kim, SS, PhD  
Golam Choudhury, BA, MA, PhD  
Leslie Brinson, BA, MA, PhD  
George Conklin, AB, MA, PhD

English  
Geography  
Health Education  
History and Social Science  
Home Economics  
Mathematics  
Management/Marketing  
Modern Foreign Languages  
Music  
Nursing  
Philosophy  
Physical Education and Recreation  
Physics  
Political Science  
Psychology  
Sociology

Financial Affairs

George T. Thorne, BSC, MS  
Clyde B. Thorpe, BS  
Aletha Rease, BSC  
William E. McDonald, BSEE  
Robert P. Smith, BS  
Norman P. Pearson, BSC  
Patricia Durham, BS, MS  
Shirley B. Ragland, AAS  
Rebecca P. Edmonds, BSC, MA  
Mernoy E. Harrison, BS, MBA  
James W. Davis, BS, MS

Vice-Chancellor for Financial Affairs  
OSHA Officer  
Personnel Officer  
Director of Physical Plant  
Director of Food Services  
Director of Student Stores  
Director of Auxiliary Enterprises  
Travel Officer  
Purchasing Officer  
Comptroller  
Assistant Comptroller

Student Affairs

James F. Blue, BS, MEd, PhD  
Roger Bryant, BS, MA, EdD  
Shirley Green, BA, MA  
Marion E. Covington  
Thurman Prescott, Jr., BA  
Glen R. Martin, BS, MS, BD, ThM, EdD  
Wallace C. Blackwell, BSC, MA  
Mildred V. Trent, BA, MA  
Kenneth Foushee, BS, MS  
Marcono R. Himes, BS, MD

Vice-Chancellor for Student Affairs  
Asst. Vice-Chancellor for Student Affairs  
Director of Residence Operations  
Director of Student Activities  
Director of Student Union  
Director of Counseling Center  
Director of Financial Aid  
Director of Student Life for Women  
Director of Student Life for Men  
Director of Student Health Services

University Relations

S. Dallas Simmons, BS, MS, PhD

William P. Evans, BS  
Lindsey Merritt, BSC, MS

Nancy Rowland, BA, MA  
Robert Poole, BA  
Henry Lattimore, BS, MS  
John W. Smith, BA  
Alex M. Rivera, BA  
David H. Witherspoon, AB

Vice-Chancellor for  
University Relations  
Director of Alumni Affairs  
Director of Career Counseling  
and Placement  
Director of Admissions  
Director of Development  
Director of Athletics  
Chief of Security  
Director of Public Relations  
Director of News Bureau



ENROLLMENT

<u>Table</u>		<u>Page</u>
1	General Characteristics of Enrollment, 1968-1980	27
2	Sex Distribution of Headcount Enrollment, 1926-1980	29
3	Mean Age of Headcount Enrollment, 1975-1980	30
4	Survey of Undergraduate Enrollment by Age, 1980	31
5	Survey of Graduate and First Professional Enrollment by Age, 1980	32
6	Geographic Origin of Students, 1968-1980	33
7	Distribution of Students by United States Geographic Area, 1968-1980	34
8	County of Origin of In-State Students, Fall, 1980	35
9	Racial Composition of Headcount Enrollment, 1976-1980	36

TABLE 1

GENERAL CHARACTERISTICS OF ENROLLMENT,  
1968-1980

CHARACTERISTICS	1968			1971			1974			1977			1979			1980		
	MEN	WOMEN	TOTAL	MEN	WOMEN	TOTAL	MEN	WOMEN	TOTAL	MEN	WOMEN	TOTAL	MEN	WOMEN	TOTAL	MEN	WOMEN	TOTAL
<b>UNDERGRADUATE</b>																		
FULL- & PART-TIME																		
FULL-TIME	1009	1663	2672	1183	1830	3013	1339	1907	3246	1365	2188	3553	1347	2062	3429	1307	2068	3375
%	36.8	60.6	97.4	36.7	56.6	93.2	37.3	53.1	90.4	34.0	54.6	88.6	33.6	51.9	85.5	32.7	51.8	84.5
PART-TIME	21	52	73	65	153	218	112	231	343	157	300	457	195	386	581	231	390	621
%	.8	1.9	2.7	2.0	4.7	6.7	3.1	6.4	9.5	3.9	7.5	11.4	4.9	9.6	14.5	5.8	9.8	15.5
<b>LEVEL OF INSTRUCTION</b>																		
FRESHMEN	343	523	866	428	611	1039	535	762	1297	464	799	1263	564	823	1387	928	1282	2210
%	12.5	19.1	31.6	13.2	18.9	32.1	14.9	21.2	36.1	11.6	19.9	31.5	14.1	20.5	34.6	23.2	32.1	55.3
SOPHOMORE	333	618	951	365	556	921	342	445	787	340	545	885	353	537	890	242	418	660
%	12.1	22.5	34.6	11.3	17.2	28.5	9.5	12.4	21.9	8.5	13.6	22.1	8.8	13.4	22.2	6.0	10.5	16.6
JUNIOR	185	325	510	235	378	613	286	433	719	311	483	794	282	438	720	170	307	477
%	6.7	11.8	18.5	7.2	11.7	18.9	8.0	12.1	20.1	7.8	12.0	19.8	7.0	10.9	18.0	4.2	7.7	11.9
SENIOR	165	218	383	181	349	530	217	365	582	292	468	760	259	439	698	126	257	383
%	5.6	7.9	13.9	5.6	10.8	16.4	6.0	10.1	16.1	7.3	11.7	19.0	6.5	10.9	17.4	3.1	6.4	9.6
SPECIAL	4	31	35	39	89	128	71	133	204	115	193	308	84	231	315	72	194	266
%	.2	1.1	1.3	1.2	2.8	4.0	2.0	3.7	5.7	2.9	4.8	7.7	2.1	5.8	7.9	1.8	4.9	6.7
<b>RACE</b>																		
BLACK										1458	2346	3804	1419	2243	3662	1420	2261	3681
%										36.4	58.5	94.9	35.4	55.9	91.3	35.6	56.6	92.1
WHITE										58	136	194	90	196	286	86	168	254
%										1.4	2.2	3.1	2.2	4.9	7.1	2.1	4.2	6.3
ALL OTHERS										6	6	12	33	29	62	32	29	61
%										.1	.1	.2	0.8	0.7	1.5	.8	.7	1.5
<b>TOTAL</b>	1030	1715	2745	1248	1983	3231	1451	2138	3589	1522	2488	4010	1542	2468	4010	1538	2458	3996
%	33.9	56.8	90.2	33.5	53.3	86.8	33.0	48.7	81.7	31.3	51.2	82.5	31.4	50.2	81.6	38.4	61.5	100.0
<b>GRADUATE</b>																		
FULL- & PART-TIME																		
FULL-TIME			67	37	42	79	77	103	180	83	111	194	77	119	196	80	145	225
%			31.8	13.7	15.6	29.3	14.6	19.5	34.1	12.8	17.1	29.9	11.0	17.0	28.0	11.8	21.4	33.3
PART-TIME			144	82	109	191	145	204	349	146	308	454	156	348	504	125	326	451
%			68.2	30.4	40.7	71.1	27.4	38.6	66.0	22.5	47.5	70.0	22.3	49.7	72.0	18.5	48.2	66.7
<b>RACE</b>																		
BLACK										190	364	554	171	359	530	145	363	508

TABLE 1 (CONTINUED)

GENERAL CHARACTERISTICS OF ENROLLMENT,  
1968-1980

CHARACTERISTICS	1968			1971			1974			1977			1979			1980		
	MEN	WOMEN	TOTAL	MEN	WOMEN	TOTAL	MEN	WOMEN	TOTAL	MEN	WOMEN	TOTAL	MEN	WOMEN	TOTAL	MEN	WOMEN	TOTAL
WHITE %										29.3	56.2	85.5	24.4	51.3	75.7	21.4	53.7	75.1
ALL OTHERS %										38	55	93	51	100	151	50	96	146
TOTAL %										5.9	8.5	14.4	7.3	14.3	21.6	7.3	14.2	21.6
												1	11	8	19	10	12	22
										.2		.2	1.6	1.1	2.7	1.4	1.8	3.3
TOTAL	106	105	211	119	151	270	222	309	529	229	419	648	233	467	700	205	471	676
%	3.5	3.4	6.9	3.2	4.1	7.3	5.1	6.9	12.0	4.7	8.6	13.3	4.7	9.5	14.2	30.3	69.7	100.0
FIRST PROFESSIONAL	I.																	
FULL- & PART-TIME	I.																	
FULL-TIME			79	134	34	168	219	48	267	148	47	195	139	66	205	134	65	199
%			91.9	69.8	17.8	87.6	80.2	17.6	97.8	75.1	23.9	99.0	67.1	31.9	99.0	56.3	27.3	83.7
PART-TIME			7	20	4	24	4	2	6	2		2	1	1	2	20	19	39
%			8.1	10.4	2.1	12.5	1.5	.7	2.2	1.5	.5	1.0	0.5	0.5	1.0	8.4	8.0	16.3
RACE																		
BLACK										85	37	122	89	42	131	87	44	131
%										43.1	18.8	61.9	43.0	20.3	63.3	36.6	18.4	55.0
WHITE										65	10	75	49	25	74	63	39	102
%										33.0	5.1	38.1	23.7	12.1	35.8	26.4	16.3	42.7
ALL OTHERS													2		2	4	1	5
%													1.0		1.0	1.7	.4	2.1
TOTAL	82	4	86	154	38	192	223	50	273	150	47	197	140	67	207	154	84	238
%	2.7	.1	2.8	4.1	1.0	5.2	5.1	1.1	6.2	3.0	1.0	4.0	2.8	1.4	4.2	64.8	35.2	100.0
GRAND TOTAL	1218	1824	3042	1522	2201	3723	1896	2495	4391	1901	2954	4855	1915	3002	4917	1897	3013	4910
%	40.0	60.0	100	40.9	58.4	100	43.2	56.7	100	39.2	60.8	100	38.9	61.1	100	38.7	61.3	100.0
TOTAL FTE	1163.0	1741.6	2904.6	1440.1	2082.5	3522.6	1751.3	2304.6	4055.9	1747.9	2716.1	4464.0	1749.0	2642.0	4391.0	1721.25	2669.75	4391.0

TABLE 2  
SEX DISTRIBUTION OF HEADCOUNT  
ENROLLMENT, 1926-1980

FALL SEMESTER	MALE		FEMALE		TOTAL
	N	%	N	%	ENROLLMENT
1926	8	25	24	75	32
1930	148	28	382	72	530
1935	138	23	472	77	610
1940	245	34	475	66	720
1945	253	30	601	70	854
1950	567	44	726	56	1293
1955	576	41	823	59	1399
1960	785	40	1170	60	1955
1965	950	39	1539	61	2489
1970	1182	38	1967	62	3149
1974	1451	40	2138	60	3589
1975	1568	40	2332	60	3900
1976	1933	41	2832	59	4765
1977	1901	39	2954	61	4855
1978	1891	39	2919	61	4810
1979	1915	39	3002	61	4917
1980	1897	39	3013	61	4910

TABLE 3  
MEAN AGE OF HEADCOUNT ENROLLMENT,  
1975-1980

YEAR	UNDERGRADUATE							GRADUATE AND FIRST PROFESSIONAL						
	MEN		WOMEN		TOTAL			MEN		WOMEN		TOTAL		
	FULL-	PART-	FULL-	PART-	FULL-	PART-		FULL-	PART-	FULL-	PART-	FULL-	PART-	
	TIME	TIME	TIME	TIME	TIME	TIME	TOTAL	TIME	TIME	TIME	TIME	TIME	TIME	TOTAL
1975	22	26	20	28	21	26	21	28	30	26	31	27	31	29
1976	22	28	20	28	20	28	21	28	31	26	32	27	32	30
1977	22	27	21	27	21	27	22	28	32	27	32	28	32	30
1978	22	27	21	29	22	28	22	28	33	28	32	28	32	30
1979	22	27	23	28	22	27	23	30	32	29	33	30	33	31
1980	21	27	21	29	21	28	22	28	32	28	32	28	32	30

TABLE 4  
 SURVEY OF UNDERGRADUATE ENROLLMENT BY  
 AGE, 1980

AGE	IN-STATE								OUT-OF-STATE							
	MEN				WOMEN				MEN				WOMEN			
	FULL-		PART-		FULL-		PART-		FULL-		PART-		FULL-		PART-	
	TIME		TIME		TIME		TIME		TIME		TIME		TIME		TIME	
	N	%	N	%	N	%	N	%	N	%	N	%	N	%	N	%
LESS THAN 18	9	.2			25	.6	3	.08	8	.2			12	.3		
18	224	5.6	5	.1	419	10.5	7	1.6	42	1.1			66	.7	2	.05
19	199	4.9	7	.2	358	1.5	17	4.3	48	1.2	2	.05	50	.3	3	.08
20	181	4.5	16	.4	315	7.9	22	.6	41	1.0	4	.1	37	.9	1	.02
21	163	4.0	11	.3	311	7.8	22	.6	31	7.8			32	.8	2	.05
22	82	2.0	15	.4	91	2.3	26	.7	18	.5	1	.02	14	.4	1	.02
23	48	1.2	14	.4	47	1.2	19	.5	9	.02	4	.1	8	.2	2	.05
24	23	.6	23	.6	25	6.3	24	.6	6	.2	1	.02	4	.1	1	
25-30	112	2.8	67	1.7	126	3.2	106	2.7	9	.2	2	.05	10	.3		
31-35	32	.8	36	.9	72	1.8	52	1.3	2	.5			1	.02	1	.02
36-40	10	.3	10	.3	25	6.3	41	1.0					1	.02		
41-50	10	.3	10	.3	13	3.3	27	6.8					1	.02		
51-64			2	.05	2	.05	7	1.8								
65 AND OVER					1	.02	2	.05					1			
UNKNOWN			1	.02	1	.02	2	.05								
TOTAL	1093	27.4	217	5.4	1831	45.8	377	9.4	214	5.2	14	.4	237	.9	13	

339

TABLE 5

SURVEY OF GRADUATE AND FIRST  
PROFESSIONAL ENROLLMENT BY AGE, 1980

AGE	IN-STATE								OUT-OF-STATE							
	MEN				WOMEN				MEN				WOMEN			
	FULL-TIME		PART-TIME		FULL-TIME		PART-TIME		FULL-TIME		PART-TIME		FULL-TIME		PART-TIME	
	N	%	N	%	N	%	N	%	N	%	N	%	N	%	N	%
LESS THAN 18																
18																
19																
20												1	.1			
21	1	.1			3	.3										
22	14	1.5	8	.9	28	3.1	2	.2	3	.3	1	.1	7	.8		
23	15	1.6	60	6.6	25	2.7	19	2.0	4	.4	2	.2	4	.4		
24	13	1.4	28	3.1	14	1.5	24	2.6	9	.9			2	.2		
25-30	72	7.9	16	1.8	54	5.9	123	13.4	24	2.6	3	.3	12	1.3	1	.1
31-35	37	4.0	9	.9	27	2.9	78	8.5	5	.5	1	.1	3	.3	2	.2
36-40	8	.9	6	.7	18	1.9	39	4.3	2	.2			2	.2		
41-50	4	.4			5	.5	38	4.2	1	.1	1	.1	1	.1		
51-64	1	.1	2	.2	1	.1	7	.8								
65 AND OVER															2	.2
UNKNOWN	1	.1			3	.3	10	1.0								
TOTAL	166	18.2	137	14.9	178	19.4	340	37.2	48	5.3	8	.9	32	3.5	5	.5

TABLE 6  
 GEOGRAPHIC ORIGIN OF STUDENTS,  
 1968-1980

GEOGRAPHIC ORIGIN	1968		1971		1974		1977		1978		1979		1980	
	N	%	N	%	N	%	N	%	N	%	N	%	N	%
COUNTY OF LOCATION (DURHAM)	512	17	880	24	1096	25	1231	25	1203	25	1289	26	1219	25
ADJACENT COUNTIES	295	10	421	11	528	12	653	13	685	14	663	13	700	14
OTHER N.C. COUNTIES	1777	58	2033	55	2320	53	2477	51	2414	50	2426	49	2420	49
OUT-OF-STATE (INCLUDING FOREIGN)	458	15	389	10	447	10	494	10	508	11	539	11	571	12
TOTALS	3042	100	3723	100	4391	100	4855	100	4810	100	4917	100	4910	100



TABLE 8  
 COUNTY OF ORIGIN OF UNDERGRADUATE, FIRST PROFESSIONAL,  
 AND GRADUATE STUDENTS, FALL 1980

COUNTY	NUMBER	COUNTY	NUMBER	COUNTY	NUMBER	COUNTY	NUMBER
ALAMANCE	54	CUMBERLAND	150	JOHNSTON	36	RANDOLPH	7
ALEXANDER	2	CURRITUCK		JONES	14	RICHMOND	17
ALLEGHANY	1	DARE	1	LEE	17	ROBERSON	50
ANSON	12	DAVIDSON	21	LENOIR	56	ROCKINGHAM	31
ASHE		DAVIE	1	LINCOLN	4	ROWAN	31
AVERY		DUPLIN	75	MCDOWELL	6	RUTHERFORD	2
BEAUFORT	30	DURHAM	1219	MACON		SAMPSON	45
BERTIE	34	EDGECOMBE	74	MADISON		SCOTLAND	34
BLADEN	56	FORSYTH	115	MARTIN	29	STANLEY	12
BRUNSWICK	15	FRANKLIN	26	MECKLENBURG	105	STOKES	8
BUNCOMBE	19	GASTON	24	MITCHELL	1	SURRY	6
BURKE	4	GATES	6	MONTGOMERY	14	SWAIN	
CABARRUS	13	GRAHAM		MOORE	20	TRANSYLVANIA	1
CALDWELL	8	GRANVILLE	72	NASH	44	TYRELL	1
CAMDEN	11	GREENE	5	NEW-HANOVER	53	UNION	11
CARTERET	9	GUILFORD	115	NORTHAMPTON	53	VANCE	79
CASWELL	31	HALIFAX	104	ONSLOW	37	WAKE	1443
CATAWBA	13	HARNETT	24	ORANGE	174	WARREN	56
CHATHAM	30	HAYWOOD		PAMLICO	6	WASHINGTON	22
CHEROKEE	1	HENDERSON	1	PASQUOTANK	35	WATAUGA	
CHOWAN	13	HERTFORD	55	PENDER	27	WAYNE	118
CLAY		HOKE	4	PERQUIMANS	4	WILKES	4
CLEVELAND	20	HYDE	6	PERSON	81	WILSON	51
COLUMBUS	30	IREDELL	14	PITT	48	YADKIN	2
CRAVEN	31	JACKSON	1	POLK	2	YANCEY	
						TOTAL	4339

TABLE 9  
 RACIAL COMPOSITION OF HEADCOUNT  
 ENROLLMENT, 1976-1980

YEAR	BLACK		WHITE		OTHER		TOTAL
	NUMBER	PERCENT OF TOTAL	NUMBER	PERCENT OF TOTAL	NUMBER	PERCENT OF TOTAL	
1976	4314	90.0	366	8.0	85	2.0	4765
1977	4482	92.0	360	7.0	13	.3	4855
1978	4276	89.0	451	9.0	83	2.0	4810
1979	4323	87.9	511	10.4	83	1.7	4917
1980	4320	88.0	502	10.2	88	1.8	4910

ADMISSIONS

<u>Table</u>		<u>Page</u>
10	Number of Student Applications, Acceptances and Enrollees, Fall 1980	38
Fig. 1	First Time Freshmen, Fall 1969-1980	39
Fig. 2	Transfer Students, Fall 1969-1980	40
Fig. 3	Graduate Students, Fall 1975-1980	41
Fig. 4	First Professional Students, Fall 1975-1980	42
11	Mean SAT Scores of Entering Freshmen, 1964-1980	43
12	High School Class Rank of Fall New Freshmen, 1964-1980	44
13	Undergraduate Transfers into NCCU and from NCCU, 1968-1980	45

TABLE 10  
 NUMBER OF STUDENT APPLICATIONS,  
 ACCEPTANCES AND ENROLLEES, FALL 1980

NEW STUDENTS	IN-STATE				OUT-OF-STATE				TOTAL
	MEN	%	WOMEN	%	MEN	%	WOMEN	%	
<b>FIRST-TIME FRESHMEN</b>									
NUMBER OF APPLICANTS	409		694		117		149		1369
NUMBER ACCEPTED	378	92*	656	95	104	89	140	94	1278
NUMBER ACTUALLY ENROLLED	311	82**	524	80	69	78	82	87	986
<b>NEW TRANSFERS</b>									
<b>UNDERGRADUATE</b>									
NUMBER OF APPLICANTS	101		156		17		20		294
NUMBER ACCEPTED	87	86	149	96	17	100	20	100	273
NUMBER ACTUALLY ENROLLED	58	67	101	68	11	65	11	55	181
<b>GRADUATE STUDENTS</b>									
NUMBER OF APPLICANTS	79		189		22		20		310
NUMBER ACCEPTED	75	95	184	97	18	81	19	95	296
NUMBER ACTUALLY ENROLLED	55	73	143	78	9	5	11	58	218
<b>FIRST PROFESSIONAL STUDENTS</b>									
NUMBER OF APPLICANTS	121		70		161		68		420
NUMBER ACCEPTED	73	60	45	64	42	26	20	29	180
NUMBER ACTUALLY ENROLLED	48	66	26	58	14	33	6	30	94

\* Percent given is the percentage of applicants who were accepted.

\*\* Percent given the percentage of acceptances who enrolled.

FIG. 2 - Transfer Students, FALL 1969-1980

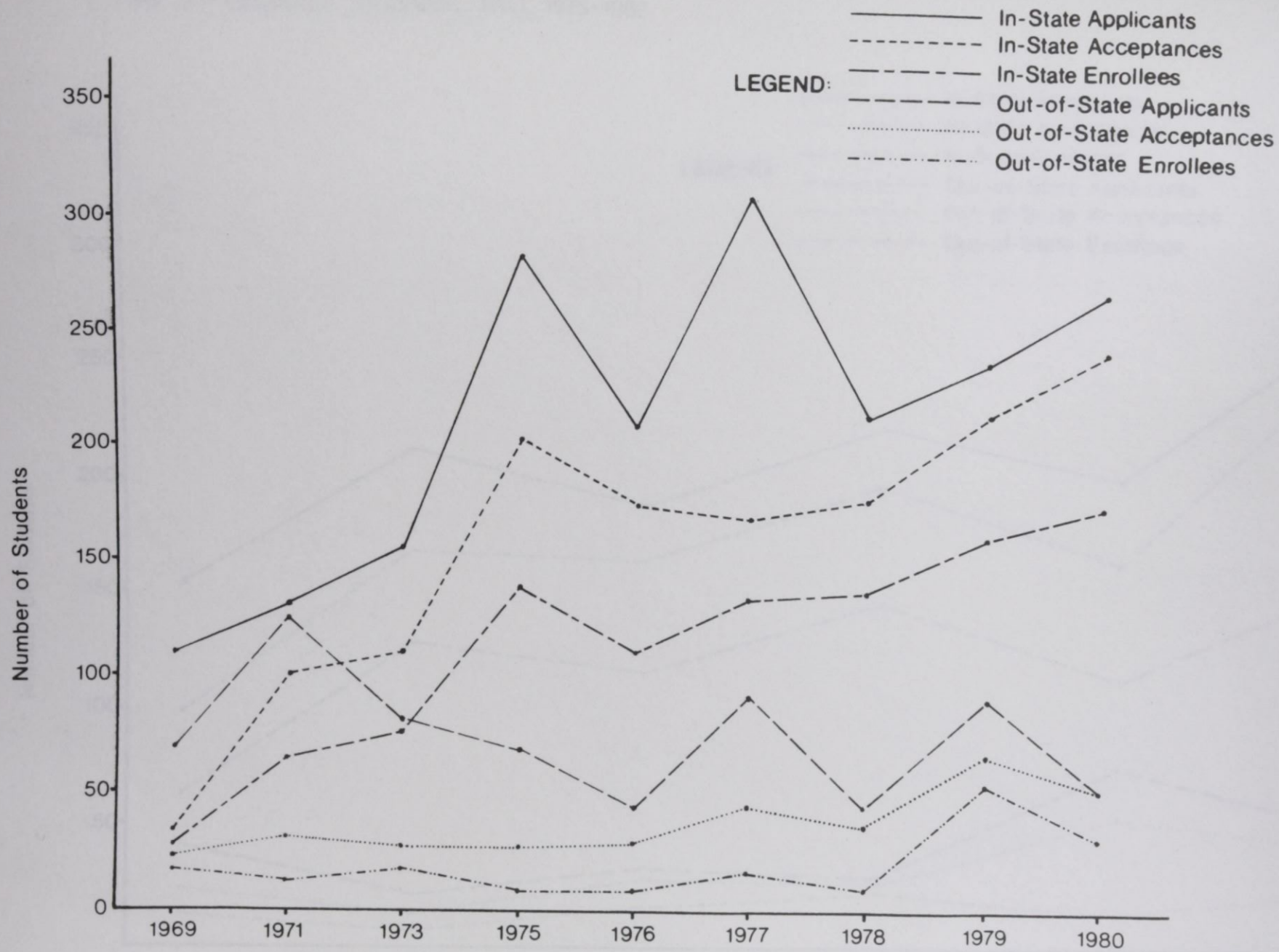


FIG. 3 - Graduate Students, FALL 1975-1980

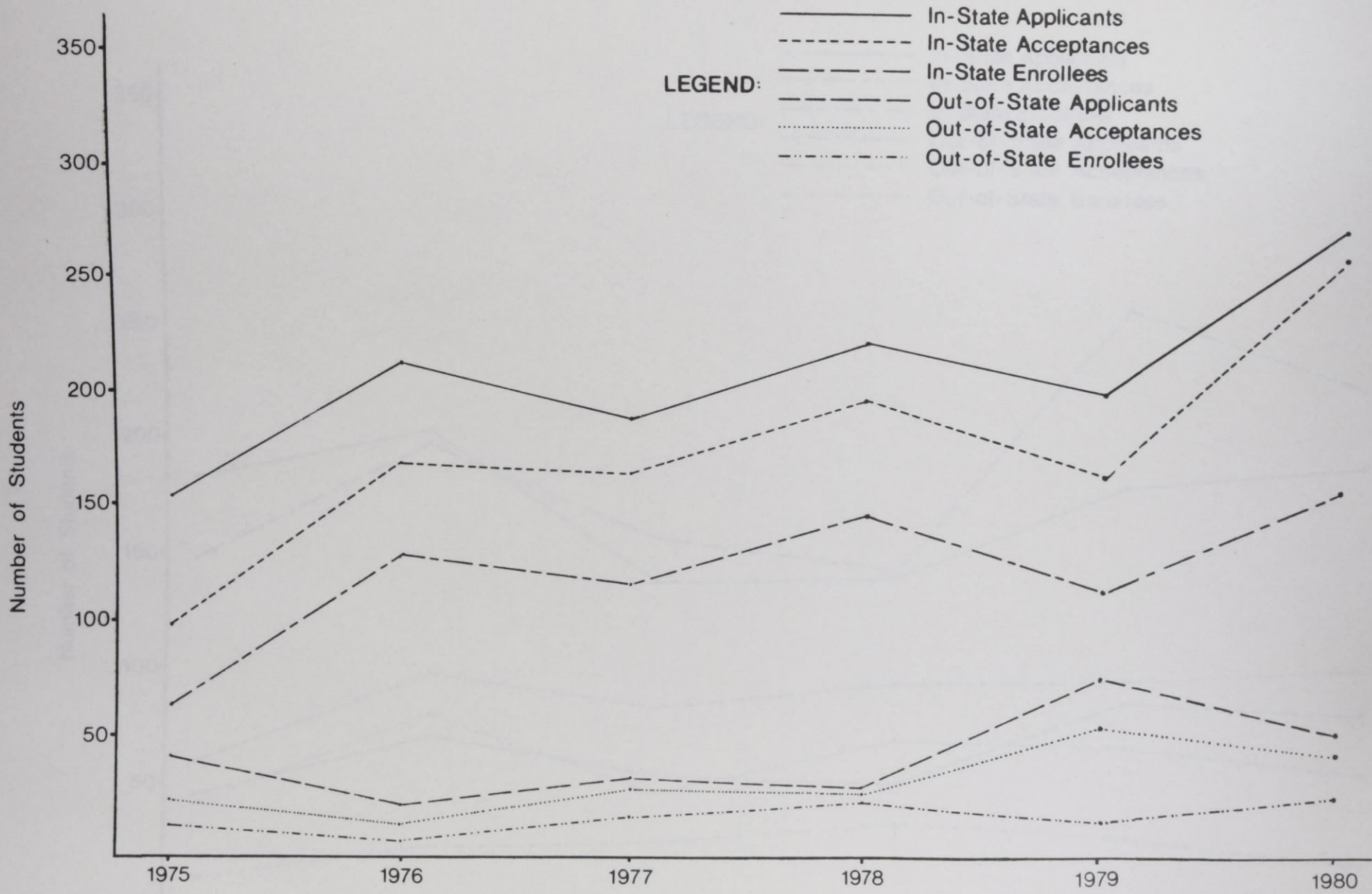


FIG. 4 - First Professional Students, FALL 1975-1980

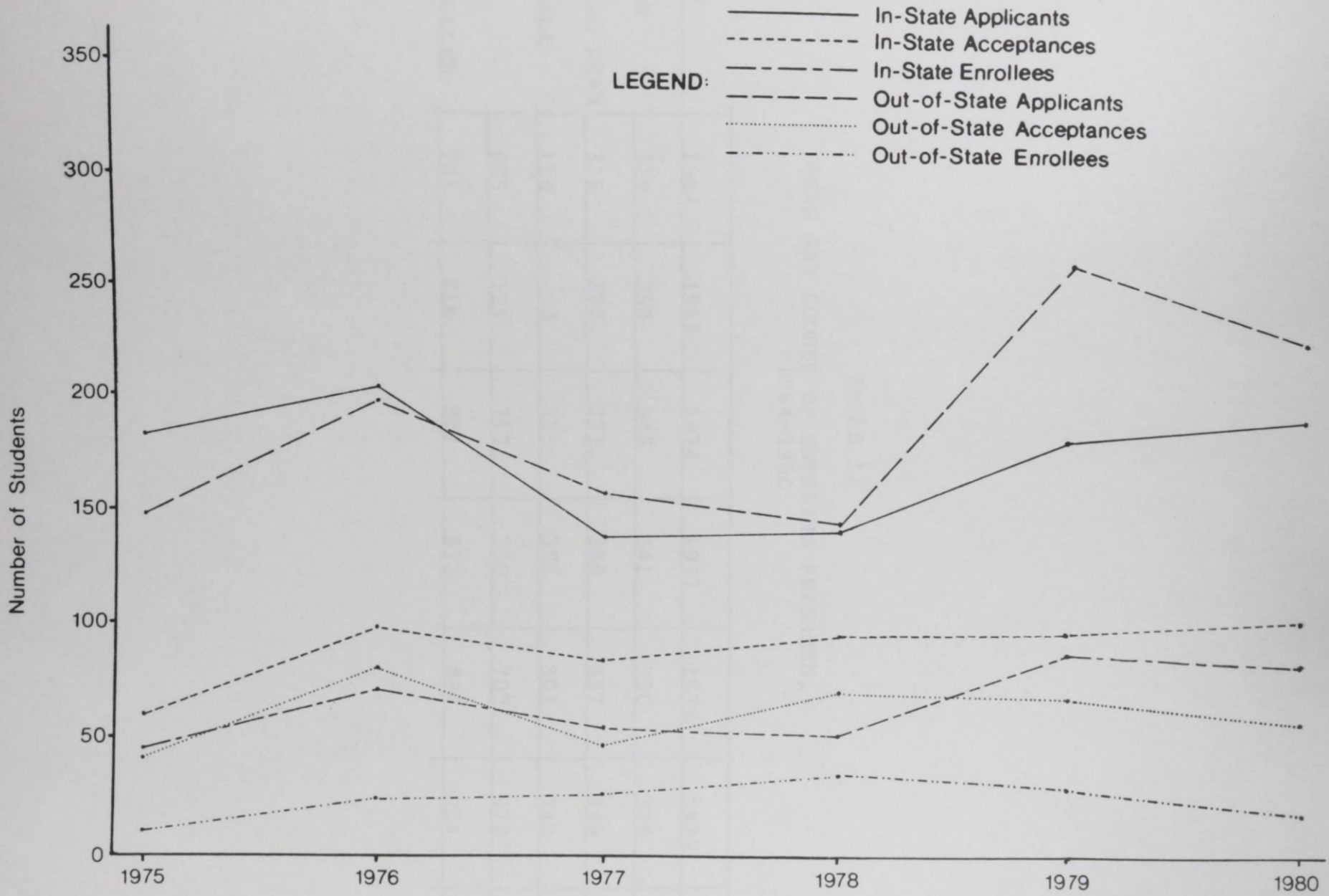


TABLE 11  
 MEAN SAT SCORES OF ENTERING FRESHMEN,  
 1964-1980

SAT	1964	1969	1974	1977	1978	1979	1980
VERBAL MEAN	319	350	346	341	350	329	295
MATHEMATICAL MEAN	336	377	371	359	357	349	329
NOT AVAILABLE	118	8	155	303	301	342	58
TOTAL MEAN	655	727	717	700	707	678	624
NUMBER ENROLLED	701	816	957	872	834	854	986



TABLE 12  
HIGH SCHOOL CLASS RANK OF FALL NEW  
FRESHMEN, 1964-1980

CLASS RANK	1964		1969		CLASS RANK	1974		1977		1978		1979		1980	
QUARTILE	N	%	N	%	QUINTILE	N	%	N	%	N	%	N	%	N	%
Highest	394	61	352	43	Highest	165	17	138	16	125	15	98	11.5	102	10.3
Second	151	23	242	30	Second	225	24	236	27	204	24	197	23.1	212	21.5
Third	73	11	117	14	Third	197	21	210	24	211	25	211	24.7	270	27.4
Fourth	23	3	53	7	Fourth	137	14	116	13	130	16	161	18.9	181	18.4
					Fifth	62	6	27	3	33	4	32	3.7	52	5.3
Not					Not										
Available	60	2	52	6	Available	171	18	145	17	131	16	155	18.1	169	17.1
Totals	701	100	816	100	Totals	957	100	872	100	834	100	854	100	986	100

TABLE 13

UNDERGRADUATE TRANSFERS INTO NCCU AND  
FROM NCCU, 1968-1980

INSTITUTION	TRANSFERRED INTO NCCU							TRANSFERRED FROM NCCU					
	1968	1972	1974	1977	1978	1979	1980	1968	1972	1974	1977	1978	1979
IN-STATE PUBLIC SENIOR COLLEGES	5	8	21	27	26	23	23	15	26	39	32	37	
IN-STATE PRIVATE SENIOR COLLEGES	1	7	7	21	16	14	26.						
IN-STATE PUBLIC COMMUNITY COLLEGES & TECHNICAL INSTITUTES		21	1	57	61	58	70						
IN-STATE PRIVATE JUNIOR COLLEGES	1	14	19	17	26	17	5						
OUT-OF-STATE INSTITUTIONS		19	39	35	27	28	76						
TOTAL	7	69	87	157	156	140	200	15	26	39	32	37	

DEGREES CONFERRED

<u>Table</u>		<u>Page</u>
14	Number of Bachelor's Degrees Conferred by Field of Study, 1967-1980	47
15	Number of Graduate and First Professional Degrees Conferred by Field of Study, 1967-1980	49
16	Mean NTE Scores of Education Graduates, 1972-1980	51



TABLE 14 (CONTINUED)

NUMBER OF BACHELOR'S DEGREES CONFERRED  
BY FIELD OF STUDY, 1967-1980

DISCIPLINE, DIVISION AND SPECIALTY	1967		1972		1976		1977		1978		1979		1980	
	N	%	N	%	N	%	N	%	N	%	N	%	N	%
MATHEMATICS, GENERAL	12	3.7	13	2.2	9	1.5	9	1.4	8	1.2	8	1.3	3	0.5
<u>PHYSICAL SCIENCE</u>														
CHEMISTRY	6	1.9	7	1.2	9	1.5	4	.6	8	1.2	7	1.1		
PHYSICS			2	.3					2	.3	1	.2		
<u>PSYCHOLOGY</u>														
PSYCHOLOGY, GENERAL	13	4.1	22	3.8	25	4.1	39	6.2	31	4.8	25	3.9	12	2.1
<u>PUBLIC AFFAIRS AND SERVICES</u>														
LAW ENFORCEMENT AND CORRECTIONS					18	2.9	23	3.7	40	6.2	35	5.5	34	5.9
PUBLIC ADMINISTRATION									17	2.7	25	3.9	51	8.9
PARKS & RECREATION											15	2.4	21	3.6
<u>SOCIAL SCIENCES</u>														
AFRO-AMERICAN STUDIES					2	.3								
HISTORY	27	8.3	44	7.6	34	5.5	20	3.2	23	3.6	15	2.4	12	2.1
GEOGRAPHY	17	5.3	14	2.4	9	1.5	9	1.4	9	1.4	5	.8	5	0.9
POLITICAL SCIENCE	7	2.2	30	5.2	54	8.8	55	8.8	52	8	23	3.6	17	3.0
SOCIAL SCIENCE, GENERAL	2	.6	3	.52	5	.8	4	.6						
SOCIOLOGY	35	10.9	106	18.2	52	6.8	31	4.9	35	5.4	22	3.4	22	3.8
<u>TOTAL</u>	322	100	582	100	615	100	630	100	647	100	638	100	576	100

TABLE 15

NUMBER OF GRADUATE AND FIRST  
PROFESSIONAL DEGREES CONFERRED BY  
FIELD OF STUDY, 1967-1980

DISCIPLINE, DIVISION AND SPECIALTY	1967		1972		1977		1978		1979		1980	
	N	%	N	%	N	%	N	%	N	%	N	%
<b>BIOLOGICAL SCIENCES</b>												
BIOLOGY, GENERAL	5	3.7	4	3	3	1.2	2	.8	8	3.0	3	1.4
<b>BUSINESS AND MANAGEMENT</b>												
BUSINESS AND COMMERCE			7	5.2								
BUSINESS ECONOMICS												
BUSINESS MANAGEMENT AND ADMINISTRATION			6	4.4	11	4.5	18	7.4	17	6.4	16	7.6
<b>EDUCATION</b>												
BUSINESS, COMMERCE & DISTRIBUTIVE EDUCATION	13	9.7	5	3.7	7	2.9	6	2.5	3	1.1	11	5.2
EDUCATION OF THE EMOTIONALLY DISTURBED					5	2.1	1	.4				
EDUCATION OF THE MENTALLY RETARDED			13	9.6	23	9.5	23	9.5	29	10.9		
EDUCATIONAL ADMINISTRATION	3	2.2	7	5.2	19	7.9	7	2.9	21	7.9	11	5.2
EDUCATIONAL MEDIA			1	.7	11	4.5	10	4.1	8	3.0	4	1.9
ELEMENTARY EDUCATION (GENERAL)	52	39.9	8	5.9	20	8.3	22	9.0	30	11.3	5	2.3
HOME ECONOMICS EDUCATION	5	3.8					3	1.2				
MUSIC EDUCATION	3	2.2										
PHYSICAL EDUCATION	7	5.2	3	2.2	4	1.6	3	1.2	4	1.5	3	1.4
RECREATION EDUCATION					2	.8						
SPECIAL EDUCATION, GENERAL											35	16.7
SPEECH CORRECTION			1	.7	8	3.3	7	2.9	3	1.1	3	1.4
STUDENT PERSONNEL, GUIDANCE & COUNSELING	8	6.0	12	8.9	34	14.0	39	16	37	13.9	25	11.9
SIXTH YEAR PROGRAO	4	3.0										
<b>FINE AND APPLIED ARTS</b>												
MUSIC (LIBERAL ARTS)			5	3.7	5	2.1	1	.4	4	1.5		
<b>FOREIGN LANGUAGE</b>												
FRENCH	1	.7	1	.7					1	.4		
<b>HOME ECONOMICS</b>												
HOME ECONOMICS, GENERAL			2	1.5			5	2.1	1	.4	3	1.4
<b>LAW</b>												
JURIS DOCTOR'S	18	13.4	33	24.4	43	17.8	54	22.3	54	20.4	45	21.4
<b>LETTERS</b>												
ENGLISH, GENERAL	2	1.5	2	1.5	4	1.6	4	1.6	2	.8	6	2.9
<b>LIBRARY SCIENCE</b>												
LIBRARY SCIENCE, GENERAL			17	12.6	22	9.0	24	9.9	30	11.3	24	11.4
<b>MATHEMATICS</b>												
MATEMATICS, GENERAL					2	.8			1	.4	1	0.5

TABLE 15 (CONTINUED)

NUMBER OF GRADUATE AND FIRST  
PROFESSIONAL DEGREES CONFERRED BY  
FIELD OF STUDY, 1967-1980

DISCIPLINE, DIVISION AND SPECIALTY	1967		1972		1977		1978		1979		1980	
	N	%	N	%	N	%	N	%	N	%	N	%
<u>PHYSICAL SCIENCE</u>												
CHEMISTRY, GENERAL	3	2.2	2	1.5	4	1.6	2	.8	1	.4	2	0.9
<u>PSYCHOLOGY</u>												
PSYCHOLOGY, GENERAL									2	.8	4	1.9
<u>PUBLIC AFFAIRS AND SERVICES</u>												
PARK AND RECREATION MANAGEMENT							2	.8			1	0.5
<u>SOCIAL SCIENCES</u>												
HISTORY	9	6.7	4	3	10	4.1	5	2.0	4	1.5	3	1.4
SOCIOLOGY	1	.7	2	1.5	2	.8	4	1.6	3	1.1	5	2.9
<u>TOTAL</u>	134	100	135	100	242	100	242	100	265	100	210	100

TABLE 16  
 MEAN NTE SCORES OF EDUCATION GRADUATES,  
 1972-1980

SCORES	1972-73		1974-75		1976-77		1978-79		1979-80	
	NUMBER	AVERAGE	NUMBER	AVERAGE	NUMBER	AVERAGE	NUMBER	AVERAGE	NUMBER	AVERAGE
	EXAMINED	SCORE	EXAMINED	SCORE	EXAMINED	SCORE	EXAMINED	SCORE	EXAMINED	SCORE
NTE WEIGHTED COMMON EXAM SCORES	148	495	137	500	160	487	179	462	149	446
NTE COMPOSITE SCORES	148	1030	138	1031	147	1012	149	965	135	953



TABLE 16 (cont.)

SCORES BELOW 950 ON THE COMPOSITE NTE,  
1972-1980

NTE SCORES	1972-73		1974-75		1976-77		1978-79		1979-80	
	N	%	N	%	N	%	N	%	N	%
COMPOSITE NTE SCORES BELOW 950	74	35.4	28	20.3	50	34.0	73	49.0	82	60.7

FINANCIAL AID

<u>Table</u>		<u>Page</u>
17	Scholarships, Grants and Awards, 1979-80	54
18	Employment of Students at NCCU, 1979-80	55
19	Student Loans, 1979-80	56
20	Financial Aid Awards, 1979-80	57

TABLE 17  
 SCHOLARSHIPS, GRANTS AND AWARDS,  
 1979-1980

FINANCIAL AID	NUMBER	TOTAL AMOUNT	AVERAGE AWARD
UNDERGRADUATE			
NON-ATHLETIC	543	\$525,167	\$967.16
ATHLETIC	76	\$120,800	\$1589.47
SEOG	1266	\$638,443	\$504.29
BEOG	2966	\$2,957,366	\$997.09
HPEAA AND NURSING ASSISTANCE	32	\$13,404	\$418.88
LAW SCHOOL			
ASSISTANCE TO PROFESSIONAL STUDENTS	16	\$7,075	\$442.19
GRADUATE SCHOOL			
FELLOWSHIPS, TRAINEESHIPS, GRANTS & SCHOLARSHIPS	46	\$76,297	\$1658.63
ASSISTANTSHIPS	25	\$20,725	\$829.00

\* Abbreviations refer to the following programs:  
 BEOG - Basic educational Opportunity Grant  
 HPEAA - Health Professions Education Assistance Act  
 SEOG - Supplemental Education Opportunity Grant  
 LEEP - Law Enforcement Education Program

TABLE 18  
 EMPLOYMENT OF STUDENTS AT NCCU,  
 1979-1980

EMPLOYMENT	NUMBER	AMOUNT	AVERAGE AWARD
UNDERGRADUATE			
COLLEGE WORK-STUDY	1117	\$659,447	\$590.37
PACE JOBS	60	44,111	735.18
OTHER STUDENT EMPLOYMENT	118	36,411	308.57
GRADUATE SCHOOL			
COLLEGE WORK-STUDY	32	19,328	604.00
PACE JOBS	3	8,637	2,879
OTHER STUDENT EMPLOYMENT	4	1200.00	300.00
LAW SCHOOL			
COLLEGE WORK-STUDY			
PACE JOBS			
OTHER STUDENT EMPLOYMENT	2	600.00	300.00

TABLE 19  
STUDENT LOANS, 1979-80

TYPES OF LOANS	NUMBER	AMOUNT	AVERAGE AWARD
UNDERGRADUATE			
NDS LOANS	574	\$400,053	\$696.97
HPEAA LOANS			
NURSING LOANS	32	\$13,404	\$418.88
GRADUATE SCHOOL			
NDS LOANS	17	\$11,848	\$696.94
LAW SCHOOL			
NDS LOANS			
OTHER STUDENT AID			
GUARANTEED LOANS	18	\$5200	\$288.89

\* Abbreviations refer to the following programs;  
 NDS - National Direct Student  
 HPEAA - Health Professions Education Assistance Act

TABLE 20  
 FINANCIAL AID AWARDS, 1979-80

TOTAL NUMBER OF APPLICANTS	5134
APPLICANTS WHO ACTUALLY ENROLLED	4668
NUMBER OF AWARDS AND LOANS	7805
UNDUPLICATED NUMBER OF AID RECIPIENTS	4508
% OF APPLICANTS WHO RECEIVED AN AWARD	87.8
% OF ENROLLEES WHO RECEIVED AN AWARD	96.6
DOLLAR AMOUNT OF AWARDS & LOANS	\$6,735,152
MEAN AWARD	\$863
MEAN AWARD PER RECIPIENT	\$1494

ALL INSTRUCTIONAL FACULTY

<u>Table</u>		<u>Page</u>
21	Instructional Staffing Patterns by Department by Rank, Fall 1968-1980	59
22	Full-Time Equivalency of Instructional Staff by Department by Rank, Fall 1980	65

TABLE 21 (CONTINUED)

INSTRUCTIONAL STAFFING PATTERNS BY  
DEPARTMENT AND BY RANK, FALL 1968-1980

DEPARTMENT AND ACADEMIC RANK	1968	1971	1974	1977	1978	1979	1980
<b>ACADEMIC SKILLS</b>							
PROFESSOR							
ASSOCIATE PROFESSOR		1		1		2	2
ASSISTANT PROFESSOR	1			2	1	2	1
INSTRUCTOR	12	10	7	7	8	17	16
LECTURER			2	10	9	6	5
TOTAL	13	11	9	20	18	27	24
<b>ACCOUNTING</b>							
PROFESSOR					1	1	
ASSOCIATE PROFESSOR							
ASSISTANT PROFESSOR					1	2	2
INSTRUCTOR					3	4	2
LECTURER					2	2	1
TOTAL					7	9	5
<b>ART</b>							
PROFESSOR							
ASSOCIATE PROFESSOR		1	2	2	3	3	4
ASSISTANT PROFESSOR	2	1	2	3	3	6	5
INSTRUCTOR	4	5	2				
LECTURER			2	6	3	1	3
TOTAL	6	7	8	11	9	10	12
<b>BIOLOGY</b>							
PROFESSOR	3	5	4	3	4	3	3
ASSOCIATE PROFESSOR		2	5	5	8	8	7
ASSISTANT PROFESSOR	6	4	2	3			
INSTRUCTOR	7	5	2		1	1	1
LECTURER			2	4	3	5	6
TOTAL	16	16	15	15	16	17	17
<b>BUSINESS ADMINISTRATION</b>							
PROFESSOR	3	3	1	3			
ASSOCIATE PROFESSOR		3	3	4			
ASSISTANT PROFESSOR	8	9	7	8			
INSTRUCTOR	10	10	12	10			
LECTURER			4	14			
TOTAL	21	25	27	39			
<b>BUSINESS EDUCATION/ADMIN SERVICES</b>							



TABLE 21 (CONTINUED)

INSTRUCTIONAL STAFFING PATTERNS BY  
DEPARTMENT AND BY RANK, FALL 1968-1980

DEPARTMENT AND ACADEMIC RANK	1968	1971	1974	1977	1978	1979	1980
ASSISTANT PROFESSOR	7	6	10	6	6	6	6
INSTRUCTOR	18	15	5	3	2	1	1
LECTURER			3	6	6	5	3
TOTAL	31	29	26	25	24	21	20
<u>GEOGRAPHY</u>							
PROFESSOR	1	1				1	1
ASSOCIATE PROFESSOR			1	3	3	2	3
ASSISTANT PROFESSOR		2	1		1	3	1
INSTRUCTOR	4	2	1				
LECTURER			4	2	1	1	1
TOTAL	5	5	7	5	5	7	6
<u>HEALTH EDUCATION</u>							
PROFESSOR	1			1	1	1	1
ASSOCIATE PROFESSOR	1	2	1				
ASSISTANT PROFESSOR	2	1					
INSTRUCTOR	4	7	2	3	4	4	4
LECTURER			4	5	2	2	1
TOTAL	8	10	7	9	7	7	6
<u>HISTORY/SOCIAL SCIENCE</u>							
PROFESSOR		4	2	2	2	3	3
ASSOCIATE PROFESSOR	3		3	4	4	3	5
ASSISTANT PROFESSOR		3	1	3	3	3	2
INSTRUCTOR	3	7	4	2	2	2	1
LECTURER	8		1	2	4	6	4
TOTAL	14	14	11	12	13	15	15
<u>HOME ECONOMICS</u>							
PROFESSOR	1	2	1	1		1	1
ASSOCIATE PROFESSOR	1	1	3	2	1	1	3
ASSISTANT PROFESSOR	4	4	3	3	3	3	3
INSTRUCTOR	2	3	1				
LECTURER			3	5	5	4	1
TOTAL	8	10	11	10	10	9	8
<u>LAW</u>							
PROFESSOR	4	9	13	4	3	4	4
ASSOCIATE PROFESSOR	2	1	6	5	6	4	6
ASSISTANT PROFESSOR	1	1	2	5	5	4	1
INSTRUCTOR							

TABLE 21 (CONTINUED)

INSTRUCTIONAL STAFFING PATTERNS BY  
DEPARTMENT AND BY RANK, FALL 1968-1980

DEPARTMENT AND ACADEMIC RANK	1968	1971	1974	1977	1978	1979	1980
LECTURER			1		1	3	2
TOTAL	7	11	10	15	17	14	13
<u>LIBRARY SCIENCE</u>							
PROFESSOR		1				2	2
ASSOCIATE PROFESSOR						2	2
ASSISTANT PROFESSOR	2	4	3		1	4	4
INSTRUCTOR	1	2	2	6	1		
LECTURER			1				
TOTAL	3	7	6	7	9	8	8
<u>MANAGEMENT AND MARKETING</u>							
PROFESSOR							1
ASSOCIATE PROFESSOR					1		2
ASSISTANT PROFESSOR					2	3	1
INSTRUCTOR					1		
LECTURER						1	
TOTAL					4	4	4
<u>MATHEMATICS</u>							
PROFESSOR	2	2	2	2	2	1	1
ASSOCIATE PROFESSOR		1	1	2	2	3	4
ASSISTANT PROFESSOR	3	5	4	3	3	3	3
INSTRUCTOR	4	2	2	2	2	2	2
LECTURER			4	2	3	1	1
TOTAL	9	10	13	11	12	10	11
<u>MODERN FOREIGN LANGUAGE</u>							
PROFESSOR	3	3	3	4	4	3	2
ASSOCIATE PROFESSOR	1	2	1	4	5	5	5
ASSISTANT PROFESSOR	10	10	8	6	6	6	5
INSTRUCTOR	6	4	2				
LECTURER			4	1	2	1	1
TOTAL	20	19	18	15	17	15	13
<u>MUSIC</u>							
PROFESSOR	1	2	2	2	2	1	1
ASSOCIATE PROFESSOR	3	3	2	3	3	3	5
ASSISTANT PROFESSOR	3	2	5	4	4	4	3
INSTRUCTOR	8	8	2	2	2	2	1
LECTURER			1	5	4	7	3
TOTAL	15	15	12	16	15	17	13

TABLE 21 (CONTINUED)  
 INSTRUCTIONAL STAFFING PATTERNS BY  
 DEPARTMENT AND BY RANK, FALL 1968-1980

DEPARTMENT AND ACADEMIC RANK	1968	1971	1974	1977	1978	1979	1980
<b>NURSING</b>							
PROFESSOR							
ASSOCIATE PROFESSOR	1	1	1	1	2	2	2
ASSISTANT PROFESSOR	4	7	7	7	4	3	4
INSTRUCTOR	1		2	1	3	2	3
LECTURER			1	5	6	7	5
TOTAL	6	8	11	14	15	14	14
<b>PHILOSOPHY</b>							
PROFESSOR	1	1					
ASSOCIATE PROFESSOR			1	1	1	1	1
ASSISTANT PROFESSOR		1	1	1	1	1	1
INSTRUCTOR	1						
LECTURER							
TOTAL	2	2	2	2	2	2	2
<b>PHYSICAL EDUCATION</b>							
PROFESSOR	2	2	3	2	2	3	2
ASSOCIATE PROFESSOR		2	2	3	2	1	1
ASSISTANT PROFESSOR	7	8	8	9	9	10	9
INSTRUCTOR	8	6	5	3	3	2	2
LECTURER			3	1		1	2
TOTAL	17	18	21	18	16	17	16
<b>PHYSICS</b>							
PROFESSOR		1	3	3	3	3	3
ASSOCIATE PROFESSOR	2	1	1	1	1	1	1
ASSISTANT PROFESSOR	1	1	1				
INSTRUCTOR	1						
LECTURER				3	3	2	2
TOTAL	3	3	5	7	7	6	6
<b>POLITICAL SCIENCE</b>							
PROFESSOR		1	2	1	1	1	2
ASSOCIATE PROFESSOR		1	1	2	2	2	3
ASSISTANT PROFESSOR	1	4	3	5	5	5	3
INSTRUCTOR	2	4	1			1	1
LECTURER			1	10	6	1	3
TOTAL	3	10	8	18	14	7	12
<b>PSYCHOLOGY</b>							

TABLE 21 (CONTINUED)  
 INSTRUCTIONAL STAFFING PATTERNS BY  
 DEPARTMENT AND BY RANK, FALL 1968-1980

DEPARTMENT AND ACADEMIC RANK	1968	1971	1974	1977	1978	1979	1980
PROFESSOR	2	1	1				
ASSOCIATE PROFESSOR		2	1	3	3	3	4
ASSISTANT PROFESSOR	1	1			1	1	
INSTRUCTOR	4	2	2			2	2
LECTURER			3	2	2	1	3
TOTAL	7	6	7	6	6	7	9
<b>SOCIOLOGY</b>							
PROFESSOR	5	4	2	1	1	1	1
ASSOCIATE PROFESSOR					1	2	3
ASSISTANT PROFESSOR		2	4	4	5	4	3
INSTRUCTOR	4	4	2				
LECTURER			2		4	5	5
TOTAL	9	10	10	7	11	13	12
<b>GRAND TOTAL BY ACADEMIC YEAR</b>	<b>253</b>	<b>291</b>	<b>285</b>	<b>329</b>	<b>322</b>	<b>329</b>	<b>304</b>
<b>SUMMARY BY RANK AND YEAR</b>							
PROFESSOR	48	59	39	40	41	40	44
ASSOCIATE PROFESSOR	17	41	51	68	76	73	85
ASSISTANT PROFESSOR	75	85	79	83	82	88	73
INSTRUCTOR	113	105	61	41	40	47	41
LECTURER			55	96	83	81	61
GRAND TOTAL	253	291	285	329	322	329	304

\* The departments of Accounting, Business Administration, Business Education, Economics, and Management and Marketing were reported as part of the School of Business.

\*\* The data for the School of Business is divided into the following departments: Accounting, Business Administration, Business Education, Economics, and Management and Marketing.

TABLE 22

FULL-TIME EQUIVALENCY OF INSTRUCTIONAL STAFF,  
 BY DEPARTMENT, BY RANK,  
 FALL 1980

DEPARTMENT AND ACADEMIC RANK	NUMBER	NUMBER	FTE
	FULL-TIME	PART-TIME	
<u>ACADEMIC SKILLS CENTER</u>			
PROFESSOR			
ASSOCIATE PROFESSOR	2		2.00
ASSISTANT PROFESSOR	1		1.00
INSTRUCTOR	16		16.00
VISITING LECTURER	2	3	3.75
TOTAL	21	3	22.75
<u>ACCOUNTING</u>			
PROFESSOR			
ASSOCIATE PROFESSOR			2.00
ASSISTANT PROFESSOR	2		2.00
INSTRUCTOR	2		0.25
VISITING LECTURER		1	4.25
TOTAL	4	1	
<u>ART</u>			
PROFESSOR			4.00
ASSOCIATE PROFESSOR	4		5.00
ASSISTANT PROFESSOR	5		
INSTRUCTOR		2	2.25
VISITING LECTURER		2	11.25
TOTAL	10		
<u>BIOLOGY</u>			
PROFESSOR	3		3.00
ASSOCIATE PROFESSOR	7		7.00
ASSISTANT PROFESSOR			1.00
INSTRUCTOR	1	6	2.25
VISITING LECTURER	11	6	13.25
TOTAL			
<u>BUSINESS EDUCATION/ADMIN SERVICES</u>			
PROFESSOR	2		2.00
ASSOCIATE PROFESSOR	1		1.00
ASSISTANT PROFESSOR	1		1.00
INSTRUCTOR	2		2.00
VISITING LECTURER		2	.75

TABLE 22 (CONTINUED)  
 FULL-TIME EQUIVALENCY OF INSTRUCTIONAL STAFF,  
 BY DEPARTMENT, BY RANK,  
 FALL 1980

DEPARTMENT AND ACADEMIC RANK	NUMBER	NUMBER	FTE
	FULL-TIME	PART-TIME	
TOTAL	6	2	6.75
<u>CHEMISTRY</u>			
PROFESSOR	3		3.00
ASSOCIATE PROFESSOR	2		2.00
ASSISTANT PROFESSOR	1		1.00
INSTRUCTOR			
VISITING LECTURER	1		1.00
TOTAL	7		7.00
<u>DRAMA</u>			
PROFESSOR	1		
ASSOCIATE PROFESSOR			
ASSISTANT PROFESSOR			
INSTRUCTOR	2		2.00
VISITING LECTURER	2		2.00
TOTAL	5		5.00
<u>ECONOMICS</u>			
PROFESSOR	1		1.00
ASSOCIATE PROFESSOR	4	1	4.00
ASSISTANT PROFESSOR	4		4.00
INSTRUCTOR			
VISITING LECTURER	1		1.25
TOTAL	10	1	10.25
<u>EDUCATION</u>			
PROFESSOR	6		6.00
ASSOCIATE PROFESSOR	8		8.00
ASSISTANT PROFESSOR	6		6.00
INSTRUCTOR			
VISITING LECTURER	2	2	2.75
TOTAL	22	2	22.75
<u>ENGLISH</u>			
PROFESSOR	3		3.00
ASSOCIATE PROFESSOR	7		7.00
ASSISTANT PROFESSOR	6		6.00
INSTRUCTOR	1		1.00

TABLE 22 (CONTINUED)  
 FULL-TIME EQUIVALENCY OF INSTRUCTIONAL STAFF,  
 BY DEPARTMENT, BY RANK,  
 FALL 1980

DEPARTMENT AND ACADEMIC RANK	NUMBER	NUMBER	FTE
	FULL-TIME	PART-TIME	
VISITING LECTURER	1	2	2.50
TOTAL	18	2	19.50
<u>GEOGRAPHY</u>			
PROFESSOR	1		1.00
ASSOCIATE PROFESSOR	3		2.00
ASSISTANT PROFESSOR	1		1.00
INSTRUCTOR			
VISITING LECTURER	1		1.00
TOTAL	6		6.00
<u>HEALTH EDUCATION</u>			
PROFESSOR	1		1.00
ASSOCIATE PROFESSOR			
ASSISTANT PROFESSOR			
INSTRUCTOR	4		4.00
VISITING LECTURER	1		1.00
TOTAL	6		6.00
<u>HISTORY/SOCIAL SCIENCE</u>			
PROFESSOR	3		3.00
ASSOCIATE PROFESSOR	5		5.00
ASSISTANT PROFESSOR	2		2.00
INSTRUCTOR	1		1.00
VISITING LECTURER	2	2	3.00
TOTAL	13	2	13.00
<u>HOME ECONOMICS</u>			
PROFESSOR	1		1.00
ASSOCIATE PROFESSOR	3		3.00
ASSISTANT PROFESSOR	3		3.00
INSTRUCTOR			
VISITING LECTURER	1		1.00
TOTAL	8		8.00
<u>LAW</u>			
PROFESSOR	4		4.00
ASSOCIATE PROFESSOR	6		6.00
ASSISTANT PROFESSOR	1		1.00

TABLE 22 (CONTINUED)  
 FULL-TIME EQUIVALENCY OF INSTRUCTIONAL STAFF,  
 BY DEPARTMENT, BY RANK,  
 FALL 1980

DEPARTMENT AND ACADEMIC RANK	NUMBER	NUMBER	FTE
	FULL-TIME	PART-TIME	
INSTRUCTOR			
VISITING LECTURER		2	.50
TOTAL	11	2	11.50
<u>LIBRARY SCIENCE</u>			
PROFESSOR	2		2.00
ASSOCIATE PROFESSOR	2		2.00
ASSISTANT PROFESSOR	4		4.00
INSTRUCTOR			
VISITING LECTURER			
TOTAL	8		8.00
<u>MARKETING AND MANAGEMENT</u>			
PROFESSOR	1		1.00
ASSOCIATE PROFESSOR	2		2.00
ASSISTANT PROFESSOR	1		1.00
INSTRUCTOR			
VISITING LECTURER			
TOTAL	4		4.00
<u>MATHEMATICS</u>			
PROFESSOR	1		1.00
ASSOCIATE PROFESSOR	4		4.00
ASSISTANT PROFESSOR	3		3.00
INSTRUCTOR	2		2.00
VISITING LECTURER		1	0.50
TOTAL	10	1	10.50
<u>MODERN FOREIGN LANGUAGE</u>			
PROFESSOR	2		2.00
ASSOCIATE PROFESSOR	5		5.00
ASSISTANT PROFESSOR	5		5.00
INSTRUCTOR			
VISITING LECTURER	1		1.00
TOTAL	13		13.00
<u>MUSIC</u>			
PROFESSOR	1		1.00
ASSOCIATE PROFESSOR	5		5.00



TABLE 22 (CONTINUED)  
 FULL-TIME EQUIVALENCY OF INSTRUCTIONAL STAFF,  
 BY DEPARTMENT, BY RANK,  
 FALL 1980

DEPARTMENT AND ACADEMIC RANK	NUMBER	NUMBER	FTE
	FULL-TIME	PART-TIME	
ASSISTANT PROFESSOR	3		3.00
INSTRUCTOR	1		1.00
VISITING LECTURER	1	2	1.75
TOTAL	11	2	11.75
<u>NURSING</u>			
PROFESSOR			
ASSOCIATE PROFESSOR	2		2.00
ASSISTANT PROFESSOR	4		4.00
INSTRUCTOR	3		3.00
VISITING LECTURER	1	4	2.05
TOTAL	10	4	10.05
<u>PHILOSOPHY</u>			
PROFESSOR			
ASSOCIATE PROFESSOR	1		1.00
ASSISTANT PROFESSOR	1		1.00
INSTRUCTOR			
VISITING LECTURER			
TOTAL	2		2.00
<u>PHYSICAL EDUCATION</u>			
PROFESSOR	2		2.00
ASSOCIATE PROFESSOR	1		1.00
ASSISTANT PROFESSOR	9		9.00
INSTRUCTOR	2		2.00
VISITING LECTURER	1	1	1.75
TOTAL	15	1	15.75
<u>PHYSICS</u>			
PROFESSOR	3		3.00
ASSOCIATE PROFESSOR	1		1.00
ASSISTANT PROFESSOR			
INSTRUCTOR			
VISITING LECTURER	1	1	1.33
TOTAL	5	1	4.33
<u>POLITICAL SCIENCE</u>			
PROFESSOR	2		2.00

TABLE 22 (CONTINUED)

FULL-TIME EQUIVALENCY OF INSTRUCTIONAL STAFF,  
 BY DEPARTMENT, BY RANK,  
 FALL 1980

DEPARTMENT AND ACADEMIC RANK	NUMBER	NUMBER	FTE
	FULL-TIME	PART-TIME	
ASSOCIATE PROFESSOR	3		3.00
ASSISTANT PROFESSOR	3		3.00
INSTRUCTOR	1		1.00
VISITING LECTURER		3	.75
TOTAL	9	3	9.75
<u>PSYCHOLOGY</u>			
PROFESSOR			
ASSOCIATE PROFESSOR	4		4.00
ASSISTANT PROFESSOR			
INSTRUCTOR	1	1	1.50
VISITING LECTURER	1	2	1.50
TOTAL	6	3	6.00
<u>SOCIOLOGY</u>			
PROFESSOR	1		1.00
ASSOCIATE PROFESSOR	3		3.00
ASSISTANT PROFESSOR	3		3.00
INSTRUCTOR			
VISITING LECTURER	2	3	3.00
TOTAL	9	3	10.00

TABLE 22  
 SUMMARY OF INSTRUCTIONAL FACULTY BY  
 ACADEMIC RANK

ACADEMIC RANK	FULL-TIME	PART-TIME	TOTAL	FTE
PROFESSOR	44		44	44.00
%	14.5		14.5	15.8
ASSOCIATE PROFESSOR	85		85	85.00
%	30.0		30.0	30.5
ASSISTANT PROFESSOR	72	1.0	73	72.50
%	23.7	0.3	24.0	26.0
INSTRUCTOR	40	1	41	40.50
%	13.2	0.3	13.5	14.5
LECTURER	21	40	61	36.88
%	6.9	13.2	20.1	13.22
TOTAL INSTRUCTIONAL FACULTY	262	42	304	278.88
%	86.2	13.8	100.0	100.0

FULL-TIME INSTRUCTIONAL FACULTY

<u>Table</u>		<u>Page</u>
23	Highest Earned Degree by Department, Fall 1968-80	73
24	Tenure by Department, Fall 1980	76
25	Tenure by Rank and Sex, Fall 1974-1980	78
26	Department and Academic Rank by Race and Sex, Fall 1980	79
27	Mean Salaries by Rank, 1968-1980	86
28	Mean Salaries of Professors by Race and Sex, 1974-1980	87
29	Mean Salaries of Associate Professors by Race and Sex, 1974-1980	88
30	Mean Salaries of Assistant Professors by Race and Sex, 1974-1980	89
31	Mean Salaries of Instructors by Race and Sex, 1974-1980	90
32	Summary: Mean Salaries by Rank, by Race, and by Sex, Fall 1980	91
Fig. 5	Mean Salaries of Professors by Race and Sex, Fall 1980	92
Fig. 6	Mean Salaries of Associate Professors by Race and Sex, Fall 1980	93
Fig. 7	Mean Salaries of Assistant Professors by Race and Sex, Fall 1980	94
Fig. 8	Mean Salaries of Instructors by Race and Sex, Fall 1980	95

TABLE 23

HIGHEST EARNED DEGREE BY DEPARTMENT,  
FALL 1968-1980

DEPARTMENT AND HIGHEST DEGREE	1968	1971	1974	1977	1978	1979	1980
ACADEMIC SKILLS CENTER							
DOCTOR'S				2	1	3	1
MASTER'S			7	15	12	18	18
BACHELOR'S			2	2	2	3	2
ACCOUNTING							
DOCTOR'S					2	2	
MASTER'S					4	4	3
BACHELOR'S						1	1
ART							
DOCTOR'S			1	2	2	2	2
MASTER'S	5	7	6	6	7	7	8
BACHELOR'S	1						
BIOLOGY							
DOCTOR'S	5	8	9	10	11	11	10
MASTER'S	10	8	3	5	4	1	1
BACHELOR'S	1						
BUSINESS EDUCATION/ADMIN SERVICES							
DOCTOR'S					2	2	3
MASTER'S					3	3	3
BACHELOR'S					1	1	
CHEMISTRY							
DOCTOR'S	4	5	4	5	5	5	6
MASTER'S	1	2	2	1	1	1	1
BACHELOR'S							
DRAMA							
DOCTOR'S		1	1	1	1	1	1
MASTER'S	3	4	4	5	4	4	4
BACHELOR'S	1						
ECONOMICS							
DOCTOR'S					2	2	5
MASTER'S					6	6	5
BACHELOR'S							
EDUCATION							
DOCTOR'S	17	24	15	17	13	13	14
MASTER'S	7	11	7	13	11	9	8
BACHELOR'S							
ENGLISH							
DOCTOR'S	7	8	7	11	11	10	10
MASTER'S	24	21	15	15	13	11	8
BACHELOR'S			1				
GEOGRAPHY							
DOCTOR'S	2	1	2	3	3	4	3
MASTER'S	3	4	2	2	2	2	2
BACHELOR'S							1
HEALTH EDUCATION							

TABLE 23 (CONTINUED)  
 HIGHEST EARNED DEGREE BY DEPARTMENT,  
 FALL 1968-1980

DEPARTMENT AND HIGHEST DEGREE	1968	1971	1974	1977	1978	1979	1980
DOCTOR'S	2	2	1	1	1	1	1
MASTER'S	6	8	3	5	5	5	5
BACHELOR'S				2	1		
HISTORY/SOCIAL SCIENCE							
DOCTOR'S	4	4	5	6	6	6	6
MASTER'S	11	10	6	7	8	9	7
BACHELOR'S							
HOME ECONOMICS							
DOCTOR'S	2	3	4	4	4	3	5
MASTER'S	6	7	6	6	5	5	3
BACHELOR'S							
LAW							
FIRST PROFESSIONAL	7	3	11	15	15	16	11
LIBRARY SCIENCE							
DOCTOR'S		1		5	4	4	4
MASTER'S	3	6	6	4	5	4	4
BACHELOR'S							
MARKETING AND MANAGEMENT							
DOCTOR'S					1	1	3
MASTER'S					3	2	1
BACHELOR'S							
MATHEMATICS							
DOCTOR'S	2	3	4	4	5	4	5
MASTER'S	7	9	5	6	5	5	5
BACHELOR'S							
MODERN FOREIGN LANGUAGE							
DOCTOR'S	8	4	4	9	10	9	7
MASTER'S	13	14	11	7	7	6	6
BACHELOR'S		1					
MUSIC							
DOCTOR'S	4	5	4	5	5	4	4
MASTER'S	10	9	5	8	8	8	5
BACHELOR'S	1	1	2	1	1	2	2
NURSING							
DOCTOR'S	1			1	1	1	1
MASTER'S	5	8	8	11	11	8	9
BACHELOR'S			2	1	2		
PHILOSOPHY							
DOCTOR'S	1	1	1	1	1	1	1
MASTER'S	1	1					
BACHELOR'S			1	1	1	1	1
PHYSICAL EDUCATION							
DOCTOR'S	3	4	4	5	4	4	3
MASTER'S	13	14	14	12	12	12	11
BACHELOR'S							1

TABLE 23 (CONTINUED)  
HIGHEST EARNED DEGREE BY DEPARTMENT,  
FALL 1968-1980

DEPARTMENT AND HIGHEST DEGREE	1968	1971	1974	1977	1978	1979	1980
PHYSICS							
DOCTOR'S	2	3	4	6	6	5	5
MASTER'S	1						
BACHELOR'S							
POLITICAL SCIENCE							
DOCTOR'S		2	2	6	6	4	4
MASTER'S	3	6	5	10	7	8	5
BACHELOR'S							
PSYCHOLOGY							
DOCTOR'S	4	3	2	3	3	3	4
MASTER'S	4	3	2	2	2	2	2
BACHELOR'S							
SOCIOLOGY							
DOCTOR'S							
MASTER'S	6	4	2	2	2	5	5
BACHELOR'S	4	6	5	5	7	5	4

SUMMARY : HIGHEST EARNED DEGREE BY  
DEPARTMENT

DEGREE	1968	1971	1974	1977	1978	1979	1980
DOCTOR'S	84	103	90	133	134	128	135
%	34.0	36.5	38.0	42.8	45.2	45.5	47.7
MASTER'S	159	177	135	169	154	146	129
%	64.4	62.8	57.0	54.3	52.0	52.0	49.2
BACHELOR'S	4	2	12	9	8	7	8
%	1.6	1.7	5.1	2.9	2.7	2.5	3.1
GRAND TOTAL	247	282	237	311	296	281	262
%	100.0	100.0	100.0	100.0	100.0	100.0	100.0

TABLE 24

## TENURE BY DEPARTMENT, FALL 1980

DEPARTMENT	ON		NOT ON	GRAND
	TENURED	TENURE TRACK	TENURE TRACK	TOTAL
ACADEMIC SKILLS CENTER		15	6	21
%		71.4	28.6	100.0
ACCOUNTING	1	2	1	4
%	25.0	50.0	25.0	100.0
ART	4	5	1	10
%	40.0	50.0	10.0	100.0
BIOLOGY	5	6		11
%	45.5	54.6		100.0
BUSINESS EDUCATION/ADMIN SERVICES	2	3	1	6
%	33.3	50.0	16.7	100.0
CHEMISTRY	5	1	1	7
%	71.4	14.3	14.3	100.0
DRAMA	1	4		5
%	20.0	80.0		100.0
ECONOMICS	5	4	1	9
%	50.0	40.0	10.0	100.0
EDUCATION	13	7	2	22
%	59.1	31.8	9.1	100.0
ENGLISH	14	2	2	18
%	77.8	11.1	11.1	100.0
GEOGRAPHY	3	2	1	6
%	50.0	33.3	16.7	100.0
HEALTH EDUCATION	3	2	1	6
%	50.0	33.3	16.7	100.0
HISTORY/SOCIAL SCIENCE	5	5	3	13
%	38.5	38.5	23.1	100.0
HOME ECONOMICS	4	3	1	8
%	50.0	37.5	12.5	100.0
LAW	4	7		11
%	36.4	63.6		100.0
LIBRARY SCIENCE	3	5		8
%	37.5	62.5		100.0
MARKETING AND MANAGEMENT	1	3		4
%	25.0	75.0		100.0
MATHEMATICS	7	3		10
%	70.0	30.0		100.0
MODERN FOREIGN LANGUAGE	12		1	13
%	92.3		7.7	100.0
MUSIC	9	1	1	11
%	81.4	9.1	9.1	100.0
NURSING	3	5	2	10



TABLE 24 (CONTINUED)  
 TENURE BY DEPARTMENT, FALL 1980

DEPARTMENT	ON		NOT ON	GRAND
	TENURED	TENURE TRACK	TENURE TRACK	TOTAL
% PHILOSOPHY	30.0	50.0	20.0	100.0
%	2			2
PHYSICAL EDUCATION	100.0			100.0
%	11	3	1	15
PHYSICS	73.3	20.0	6.8	100.0
%	3	1	1	5
POLITICAL SCIENCE	60.0	20.0	20.0	100.0
%	4	4	1	9
PSYCHOLOGY	44.4	44.4	11.1	100.0
%	2	3	1	6
SOCIOLOGY	33.3	50.0	16.7	100.0
%	2	5	2	9
SUMMARY	22.2	55.6	22.2	100.0
%	128	103	31	262
%	48.9	39.3	11.8	100.0

TABLE 25

## TENURE BY RANK AND SEX, FALL 1974-1980

ACADEMIC RANK AND YEAR	MALES			FEMALES		
	N	WITH TENURE	% WITH TENURE	N	WITH TENURE	% WITH TENURE
1974						
PROFESSOR	24	22	91.7	9	9	100.0
ASSOCIATE PROFESSOR	32	19	59.4	18	12	66.7
ASSISTANT PROFESSOR	42	25	59.5	31	22	71.0
INSTRUCTOR	15	2	13.3	40	11	27.5
LECTURER	17			12		
TOTAL	130	68	52.3	108	54	50.0
1977						
PROFESSOR	31	23	74.2	11	9	81.9
ASSOCIATE PROFESSOR	41	20	48.7	24	16	66.7
ASSISTANT PROFESSOR	45	26	57.8	38	24	63.2
INSTRUCTOR	13	2	15.4	27	8	29.6
LECTURER	26			23		
TOTAL	156	71	45.5	123	57	46.3
1978						
PROFESSOR	22	17	77.2	11	11	100.0
ASSOCIATE PROFESSOR	40	19	47.5	23	14	60.8
ASSISTANT PROFESSOR	41	21	51.2	27	18	66.7
INSTRUCTOR	10	2	.2	25	7	.3
LECTURER	22			21		
TOTAL	135	59	43.7	107	50	46.7
1979						
PROFESSOR	22	21	95.5	9	9	100.0
ASSOCIATE PROFESSOR	39	17	43.6	22	13	59.1
ASSISTANT PROFESSOR	46	24	52.2	24	19	79.2
INSTRUCTOR	11	2	18.2	32	7	21.9
LECTURER	13			16		
TOTAL	131	64	48.9	103	48	46.6
1980						
PROFESSOR	28	24	85.7	9	9	100.0
ASSOCIATE PROFESSOR	52	21	40.4	27	15	55.6
ASSISTANT PROFESSOR	37	23	62.2	26	17	65.4
INSTRUCTOR	6	1	16.7	25	7	28.0
LECTURER	6			8		
TOTAL	129	69	53.5	95	48	50.5

NOTE: DATA INCLUDED IN THIS TABLE IS FOR 9-MONTH INSTRUCTIONAL FACULTY ONLY.

TABLE 26

DEPARTMENT AND ACADEMIC RANK BY RACE  
AND SEX, FALL, 1980

DEPARTMENT AND ACADEMIC RANK	BLACK			WHITE			OTHER			GRAND
	MEN	WOMEN	TOTAL	MEN	WOMEN	TOTAL	MEN	WOMEN	TOTAL	TOTAL
<u>ACADEMIC SKILLS CENTER</u>										
PROFESSOR										
ASSOCIATE PROFESSOR				2		2				2
ASSISTANT PROFESSOR		1	1							1
INSTRUCTOR	2	13	15					1	1	16
VISITING LECTURER					2	2				2
TOTAL	2	14	16	2	2	4		1	1	21
<u>ACCOUNTING</u>										
PROFESSOR							1			
ASSOCIATE PROFESSOR										
ASSISTANT PROFESSOR	2		2							2
INSTRUCTOR	1		1	1		1				2
VISITING LECTURER										
TOTAL	3		3	1		1				4
<u>ART</u>										
PROFESSOR										
ASSOCIATE PROFESSOR		1	1	2		2	1		1	4
ASSISTANT PROFESSOR		2	2	2	1	3				5
INSTRUCTOR										
VISITING LECTURER					1	1				1
TOTAL		3	3	4	2	6	1		1	10
<u>BIOLOGY</u>										
PROFESSOR	2		2		1	1				3
ASSOCIATE PROFESSOR	5	1	6		1	1				7
ASSISTANT PROFESSOR										
INSTRUCTOR					1	1				1
VISITING LECTURER										
TOTAL	7	1	8		3	3				11
<u>BUSINESS EDUCATION/ADMIN SERVICES</u>										
PROFESSOR		1	1	1		1				2
ASSOCIATE PROFESSOR					1	1				1
ASSISTANT PROFESSOR		1	1							1
INSTRUCTOR		2	2							2
VISITING LECTURER										
TOTAL		4	4		1	2				6

TABLE 26 (CONTINUED)

DEPARTMENT AND ACADEMIC RANK BY RACE  
AND SEX, FALL, 1980

DEPARTMENT AND ACADEMIC RANK	BLACK			WHITE			OTHER			GRAND
	MEN	WOMEN	TOTAL	MEN	WOMEN	TOTAL	MEN	WOMEN	TOTAL	TOTAL
<b>CHEMISTRY</b>										
PROFESSOR	1		1	2		2				3
ASSOCIATE PROFESSOR	1		1				1		1	2
ASSISTANT PROFESSOR	1		1							1
INSTRUCTOR										
VISITING LECTURER	1		1							1
TOTAL	4		4	2		2	1		1	7
<b>DRAMA</b>										
PROFESSOR				1		1				1
ASSOCIATE PROFESSOR										
ASSISTANT PROFESSOR	1	1	2							2
INSTRUCTOR	1		1		1	1				2
VISITING LECTURER										
TOTAL	2	1	3	1	1	2				5
<b>ECONOMICS</b>										
PROFESSOR	1		1							1
ASSOCIATE PROFESSOR				4		4				4
ASSISTANT PROFESSOR	2		2	2		2				4
INSTRUCTOR										
VISITING LECTURER	1		1							1
TOTAL	4		4	6		6				10
<b>EDUCATION</b>										
PROFESSOR	2	1	3	2		2	1		1	6
ASSOCIATE PROFESSOR		1	1	2	5	7				8
ASSISTANT PROFESSOR	3	2	5		1	1				6
INSTRUCTOR										
VISITING LECTURER		1	1		1	1				2
TOTAL	5	5	10	4	7	11	1		1	22
<b>ENGLISH</b>										
PROFESSOR		1	1	1	1	2				3
ASSOCIATE PROFESSOR	1	2	3	1	3	4				7
ASSISTANT PROFESSOR	2	2	4	1	1	2				6
INSTRUCTOR		1	1							1
VISITING LECTURER				1		1				1
TOTAL	3	6	9	4	5	9				18

TABLE 26 (CONTINUED)

DEPARTMENT AND ACADEMIC RANK BY RACE  
AND SEX, FALL, 1980

DEPARTMENT AND ACADEMIC RANK	BLACK			WHITE			OTHER			GRAND
	MEN	WOMEN	TOTAL	MEN	WOMEN	TOTAL	MEN	WOMEN	TOTAL	TOTAL
<u>GEOGRAPHY</u>										
PROFESSOR	1		1							1
ASSOCIATE PROFESSOR	2		2	1		1				3
ASSISTANT PROFESSOR	1		1							1
INSTRUCTOR										
VISITING LECTURER		1	1							1
TOTAL	4	1	5	1		1				6
<u>HEALTH EDUCATION</u>										
PROFESSOR	1		1							1
ASSOCIATE PROFESSOR										
ASSISTANT PROFESSOR										
INSTRUCTOR		3	3	1		1				4
VISITING LECTURER					1	1				1
TOTAL	2	3	4	1	1	2				6
<u>HISTORY/SOCIAL SCIENCE</u>										
PROFESSOR	3		3							3
ASSOCIATE PROFESSOR	1	3	4		1	1				5
ASSISTANT PROFESSOR	1		1	1		1				2
INSTRUCTOR	1		1							1
VISITING LECTURER	1	1	2							2
TOTAL	7	4	11	1	1	2				13
<u>HOME ECONOMICS</u>										
PROFESSOR					1	1				1
ASSOCIATE PROFESSOR	1	2	3							3
ASSISTANT PROFESSOR	1	2	3							3
INSTRUCTOR								1	1	1
VISITING LECTURER					1	1		1	1	1
TOTAL	2	4	6		1	1		1	1	8
<u>LAW</u>										
PROFESSOR	1		1	2	1	3				4
ASSOCIATE PROFESSOR	3		3	2	1	3				6
ASSISTANT PROFESSOR	1		1							1
INSTRUCTOR										
VISITING LECTURER										
TOTAL	5		5	4	2	6				11

TABLE 26 (CONTINUED)

DEPARTMENT AND ACADEMIC RANK BY RACE  
AND SEX, FALL, 1980

DEPARTMENT AND ACADEMIC RANK	BLACK			WHITE			OTHER			GRAND
	MEN	WOMEN	TOTAL	MEN	WOMEN	TOTAL	MEN	WOMEN	TOTAL	TOTAL
<u>LIBRARY SCIENCE</u>										
PROFESSOR	1		1	1		1				2
ASSOCIATE PROFESSOR	1		1	1		1				2
ASSISTANT PROFESSOR		4	4							4
INSTRUCTOR										
VISITING LECTURER										
TOTAL	2	4	6	2		2				8
<u>MARKETING AND MANAGEMENT</u>										
PROFESSOR							1		1	1
ASSOCIATE PROFESSOR				2		2				2
ASSISTANT PROFESSOR							1		1	1
INSTRUCTOR										
VISITING LECTURER				2		2	2		2	4
TOTAL										
<u>MATHEMATICS</u>										
PROFESSOR	1		1							1
ASSOCIATE PROFESSOR	1	1	2	2		2				4
ASSISTANT PROFESSOR	3		3							3
INSTRUCTOR		1	1		1	1				2
VISITING LECTURER										
TOTAL	5	2	7	2	1	3				10
<u>MODERN FOREIGN LANGUAGE</u>										
PROFESSOR	1		1		1	1				2
ASSOCIATE PROFESSOR	1		1	1	2	3		1	1	5
ASSISTANT PROFESSOR	1		1	1	3	4				5
INSTRUCTOR					1	1				1
VISITING LECTURER								1	1	13
TOTAL	3		3	2	7	9				
<u>MUSIC</u>										
PROFESSOR					1	1				1
ASSOCIATE PROFESSOR	2	1	3	1	1	2				5
ASSISTANT PROFESSOR	2	1	3							3
INSTRUCTOR		1	1							1
VISITING LECTURER	1		1							1
TOTAL	5	3	8	1	2	3				11

TABLE 26 (CONTINUED)

DEPARTMENT AND ACADEMIC RANK BY RACE  
AND SEX, FALL 1980

DEPARTMENT AND ACADEMIC RANK	BLACK			WHITE			OTHER			GRAND
	MEN	WOMEN	TOTAL	MEN	WOMEN	TOTAL	MEN	WOMEN	TOTAL	TOTAL
<b>NURSING</b>										
PROFESSOR										
ASSOCIATE PROFESSOR		2	2							2
ASSISTANT PROFESSOR		3	3		1	1				4
INSTRUCTOR		1	1		2	2				3
VISITING LECTURER		1	1							1
TOTAL		7	7		3	3				10
<b>PHILOSOPHY</b>										
PROFESSOR										
ASSOCIATE PROFESSOR				1		1				1
ASSISTANT PROFESSOR				1		1				1
INSTRUCTOR										
VISITING LECTURER										
TOTAL				2		2				2
<b>PHYSICAL EDUCATION</b>										
PROFESSOR	2		2							2
ASSOCIATE PROFESSOR	1		1							1
ASSISTANT PROFESSOR	5	3	8		1	1				9
INSTRUCTOR	2		2							2
VISITING LECTURER	1		1							1
TOTAL	11	3	14		1	1				15
<b>PHYSICS</b>										
PROFESSOR				2		2	1		1	3
ASSOCIATE PROFESSOR				1		1				1
ASSISTANT PROFESSOR										
INSTRUCTOR										
VISITING LECTURER							1		1	1
TOTAL				3		3	2		2	5
<b>POLITICAL SCIENCE</b>										
PROFESSOR	1		1				1		1	2
ASSOCIATE PROFESSOR				2		2	1		1	3
ASSISTANT PROFESSOR	1		1	2		2				3
INSTRUCTOR				1		1				1
VISITING LECTURER										
TOTAL	2		2	5		5	2		2	9

TABLE 26 (CONTINUED)

DEPARTMENT AND ACADEMIC RANK BY RACE  
AND SEX, FALL 1980

DEPARTMENT AND ACADEMIC RANK	BLACK			WHITE			OTHER			GRAND
	MEN	WOMEN	TOTAL	MEN	WOMEN	TOTAL	MEN	WOMEN	TOTAL	TOTAL
<u>PSYCHOLOGY</u>										
PROFESSOR										
ASSOCIATE PROFESSOR	2	1	3	1		1				4
ASSISTANT PROFESSOR										
INSTRUCTOR		1	1							1
VISITING LECTURER							1		1	1
TOTAL	2	2	4	1		1	1		1	6
<u>SOCIOLOGY</u>										
PROFESSOR	1		1							1
ASSOCIATE PROFESSOR	1		1	1	1	2				3
ASSISTANT PROFESSOR	1	1	2	1		1				3
INSTRUCTOR										
VISITING LECTURER	1	1	2							2
TOTAL	4	2	6	2	1	3				9



TABLE 26.1

DEPARTMENT AND ACADEMIC RANK BY RACE  
AND SEX, FALL 1980

SUMMARY	BLACK			WHITE			OTHER			TOTAL		
	MALE	FEMALE	TOTAL	MALE	FEMALE	TOTAL	MALE	FEMALE	TOTAL	MALE	FEMALE	TOTAL
PROFESSOR	19	3	22	12	6	18	4		4	35	9	44
%	43.2	6.8	50.0	27.3	13.6	40.9	9.1		9.1	79.6	20.5	100.0
ASSOCIATE PROFESSOR	23	15	38	28	15	43	3	1	4	54	31	85
%	27.0	17.7	44.7	32.9	17.7	50.6	3.5	1.2	4.7	63.6	36.5	100.0
ASSISTANT PROFESSOR	31	22	53	9	9	18	1		1	41	31	72
%	43.0	30.6	73.6	12.5	12.5	25.0	1		1	56.9	43.0	100.0
INSTRUCTOR	6	25	31	3	5	8		1	1	9	31	40
%	15.0	62.5	77.5	7.5	12.5	20.0		2.5	2.5	22.5	77.5	100.00
LECTURER	6	5	11	1	6	7	2	1	3	9	12	21
%	28.6	23.8	52.4	4.8	28.6	33.3	9.5	4.8	14.3	42.9	57.1	100.0
GRAND TOTAL	85	70	155	53	41	94	10	3	13	148	114	262
%	32.4	26.7	59.1	20.2	15.6	35.9	3.9	1.1	5.0	56.5	43.6	100.0

UNIVERSITY OF ALABAMA

TABLE 27  
\* MEAN SALARIES BY RANK, 1968-1980

YEAR	PROFESSOR	ASSOCIATE PROFESSOR	ASSISTANT PROFESSOR	INSTRUCTOR
1968	\$13,221	\$11,208	\$8,972	\$7,474
1969	14,326	12,119	9,595	8,045
1970	15,952	13,326	10,222	8,045
1971	16,663	13,837	10,878	9,078
1972	17,588	14,321	11,248	9,698
1973	18,306	14,842	11,855	9,734
1974	19,353	16,150	13,012	10,950
1975	19,187	15,600	12,937	10,922
1976	20,777	17,069	14,073	11,928
1977	22,641	18,222	15,057	12,790
1978	24,874	19,492	16,240	13,921
1979	26,956	20,656	17,305	14,199
1980	29,735	23,027	19,337	15,415

\* All tables containing salary data are based on nine and ten-month full-time instructional faculty only.

TABLE 28  
 MEAN SALARIES OF PROFESSORS BY RACE AND  
 SEX, 1974-1980

YEAR	BLACK		WHITE		OTHER	
	MEN	WOMEN	MEN	WOMEN	MEN	WOMEN
1974	\$20,235	\$19,093	\$19,054	\$16,925	\$18,025	
1975	20,037	19,421	18,754	17,617	18,250	
1976	21,788	20,953	20,140	19,160	19,475	
1977	23,381	22,418	22,842	21,388	20,531	
1978	25,330	25,267	24,229	23,534	25,916	
1979	28,052	27,011	26,521	25,321	25,508	
1980	30,879	31,545	28,834	28,059	29,539	

TABLE 29  
 MEAN SALARIES OF ASSOCIATE PROFESSORS  
 BY RACE AND SEX, 1974-1980

YEAR	BLACK		WHITE		OTHER	
	MEN	WOMEN	MEN	WOMEN	MEN	WOMEN
1974	\$16,875	\$16,261	\$16,366	\$14,791	\$16,900	\$14,700
1975	16,053	16,567	15,620	14,923	16,800	14,700
1976	17,322	17,137	17,615	15,949	17,922	16,188
1977	18,528	17,974	18,748	17,314	17,918	17,240
1978	19,726	19,185	20,357	18,358	19,164	18,674
1979	21,128	20,545	21,598	19,100	19,409	20,208
1980	24,039	21,832	23,667	22,157	19,856	23,229

TABLE 30  
 MEAN SALARIES OF ASSISTANT PROFESSORS  
 BY RACE AND SEX, 1974-1980

YEAR	BLACK		WHITE		OTHER	
	MEN	WOMEN	MEN	WOMEN	MEN	WOMEN
1974	\$13,706	\$12,822	\$12,454	\$11,931		
1975	13,489	12,952	12,420	11,694		
1976	14,708	13,559	13,717	11,871	16,000	
1977	15,624	14,823	14,589	14,462	17,040	
1978	16,524	16,016	16,329	15,732	17,000	
1979	17,488	17,187	17,336	16,722	17,900	
1980	19,999	19,379	18,940	17,455	18,480	

1978  
 1979  
 1980  
 1981  
 1982  
 1983  
 1984  
 1985  
 1986  
 1987  
 1988  
 1989  
 1990  
 1991  
 1992  
 1993  
 1994  
 1995  
 1996  
 1997  
 1998  
 1999  
 2000  
 2001  
 2002  
 2003  
 2004  
 2005  
 2006  
 2007  
 2008  
 2009  
 2010  
 2011  
 2012  
 2013  
 2014  
 2015  
 2016  
 2017  
 2018  
 2019  
 2020  
 2021  
 2022  
 2023  
 2024  
 2025  
 2026  
 2027  
 2028  
 2029  
 2030

TABLE 31  
 MEAN SALARIES OF INSTRUCTORS BY RACE AND  
 SEX, 1974-1980

YEAR	BLACK		WHITE		OTHER	
	MEN	WOMEN	MEN	WOMEN	MEN	WOMEN
1974	\$11,394	\$11,005	\$9,600	\$9,800		
1975	11,132	10,935	10,260	11,450		
1976	12,467	11,983	10,910	12,208		10,781
1977	12,782	12,843	12,972	11,751		13,308
1978	14,708	13,753	14,064	13,117	16,000	13,308
1979	14,674	13,992	15,883	14,020		11,550
1980	12,694	15,844	16,188	16,408		13,705

TABLE 32

SUMMARY:MEAN SALARIES BY RANK, BY RACE  
AND BY SEX, FALL 1980

ACADEMIC RANK	BLACK				WHITE				OTHER			
	MEN		WOMEN		MEN		WOMEN		MEN		WOMEN	
	N	MEAN	N	MEAN	N	MEAN	N	MEAN	N	MEAN	N	MEAN
PROFESSOR	14	\$30,879	3	\$31,545	12	\$28,835	6	\$28,059	3	\$29,539		
ASSOCIATE PROFESSOR	21	24,039	13	21,832	26	23,667	15	22,157	3	19,856	1	
ASSISTANT PROFESSOR	28	19,999	22	19,379	9	18,940	8	17,454	1			
INSTRUCTOR	6	12,695	25	15,844	3	16,187	5	16,408			1	

\* Salaries have been omitted from cells with only one person.

\*\* Salaries are for nine and ten-month full-time instructional faculty only.

DATE: 10/18/84

FIG. 5 - Professors, FALL 1980

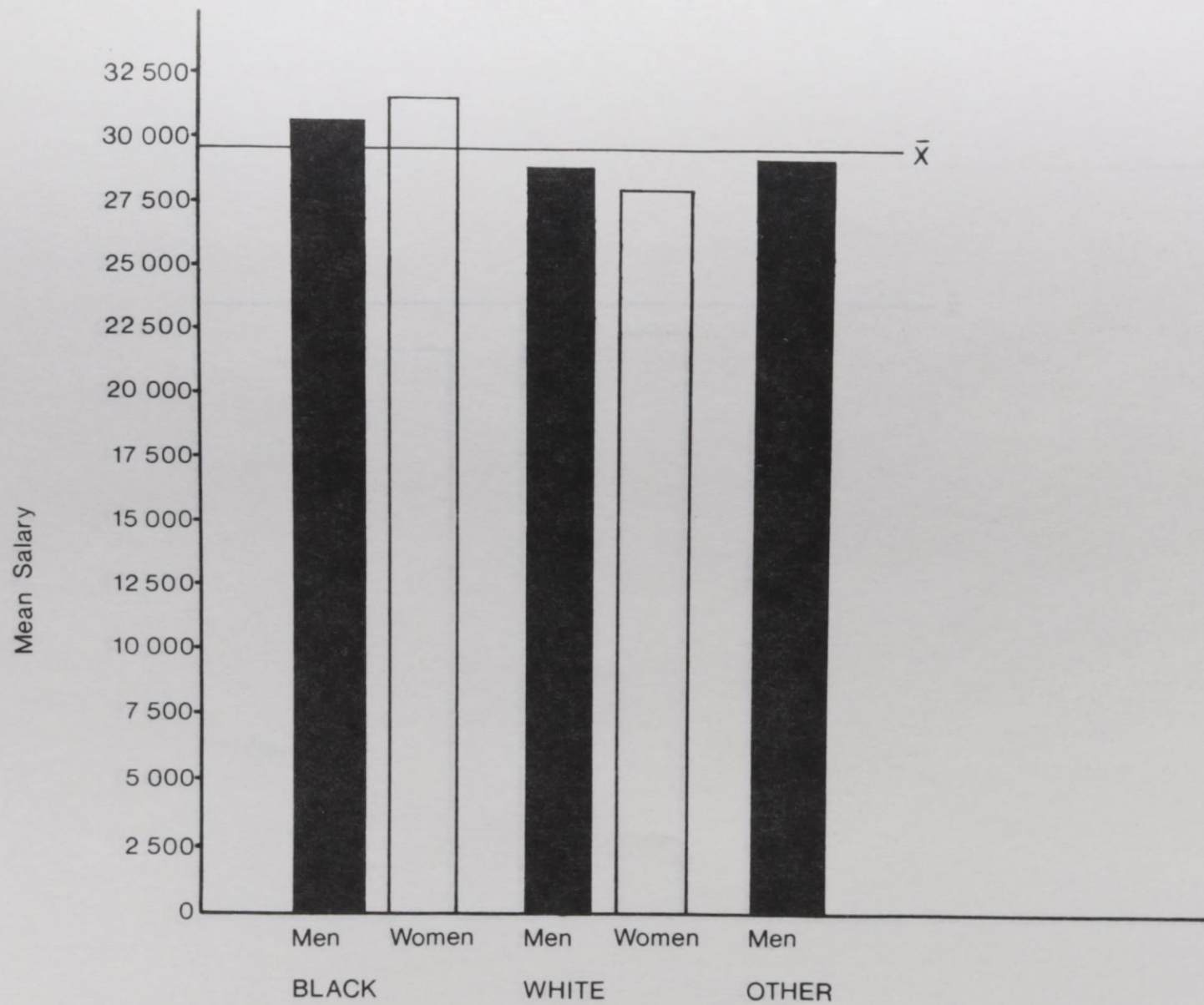




FIG. 6 - Associate Professors, FALL 1980

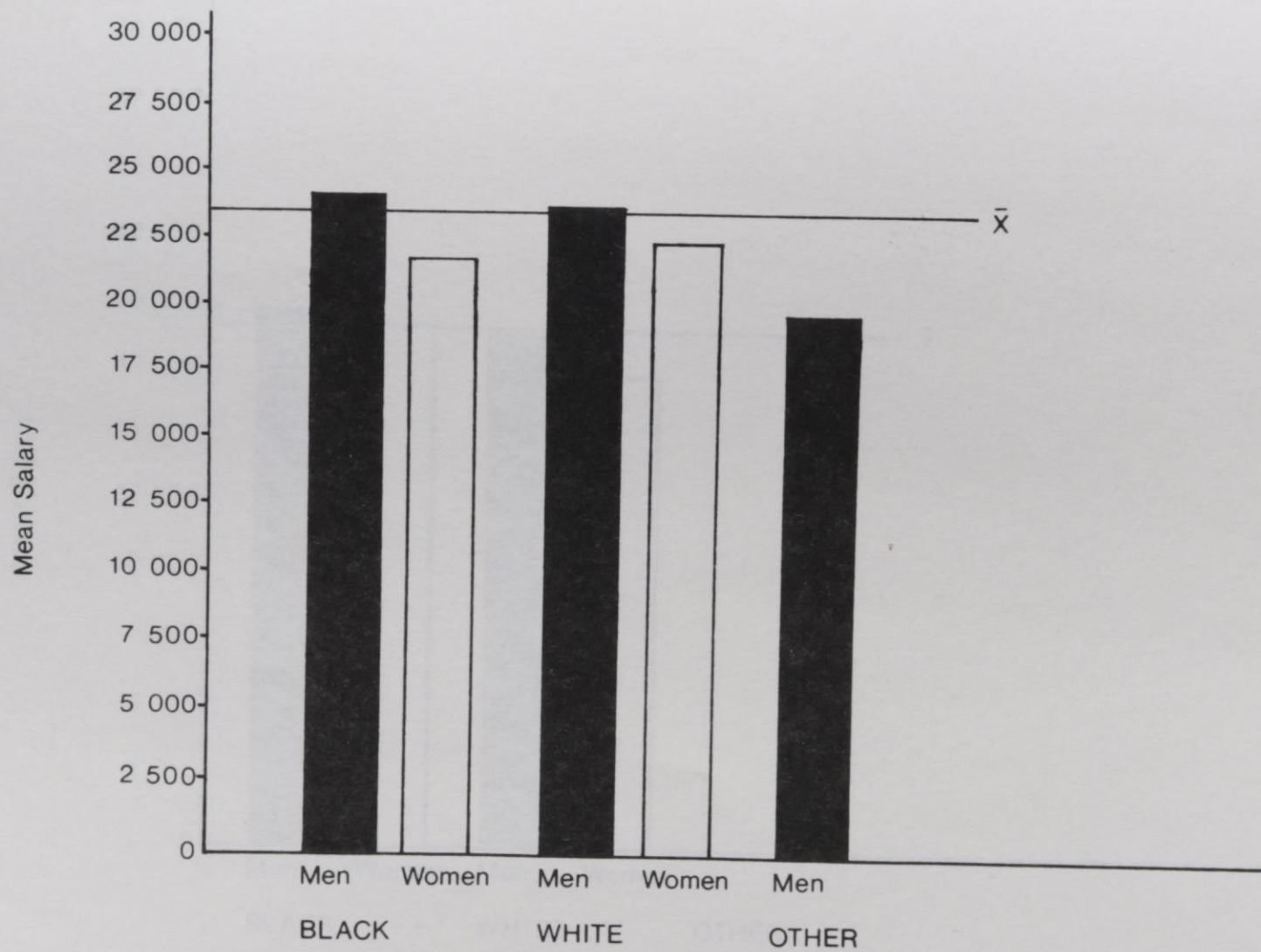


FIG. 7 - Assistant Professors, FALL 1980

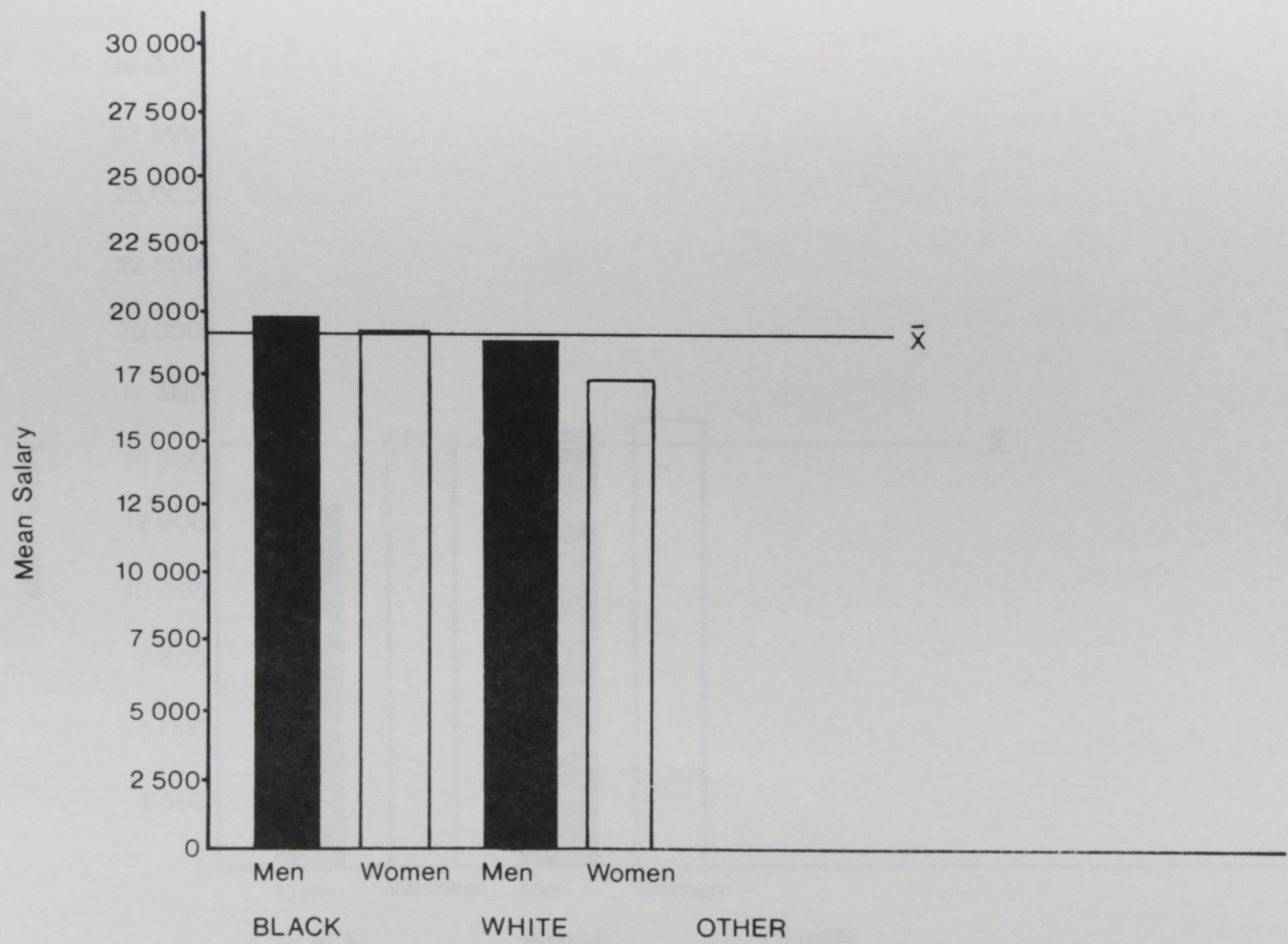
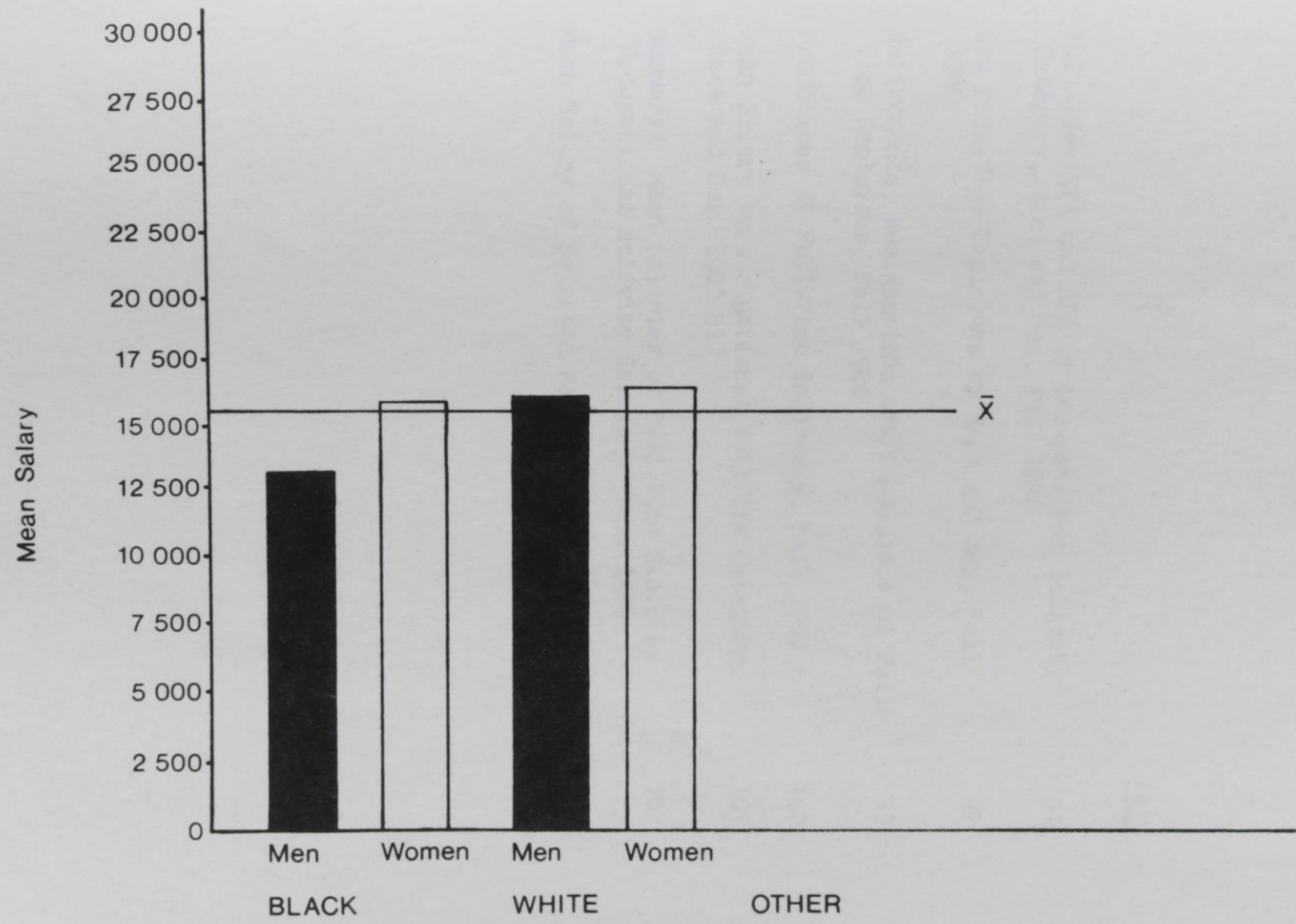


FIG. 8 - Instructors, FALL 1980



FACULTY AND STAFF

<u>Table</u>		<u>Page</u>
33	Full-Time EPA and SPA by Occupational Activity Category, Race and Sex, Fall 1980	97
34	New Full-Time Employees by Race and Sex, Fall 1980	98
35	Retirements, Resignations and Dismissals of Full-Time Employees, Fall 1980	99
36	Promotions of Full-Time Employees, Fall 1980	100
37	Mean Salary by Occupational Activity Category, Race and Sex, 1980-81	101
38	Summary: Mean Salaries of Full-Time Staff by Occupational Activity Category, Fall 1980	102
39	Mean Salary of Selected Positions, Fall 1980	103

104  
A  
D  
Y  
R  
8  
T

TABLE 33

FULL-TIME EPA AND SPA BY OCCUPATIONAL  
ACTIVITY CATEGORY, RACE AND SEX,  
FALL 1979

OCCUPATIONAL ACTIVITY CATEGORY	BLACK		WHITE		OTHER		TOTAL	
	MEN	WOMEN	MEN	WOMEN	MEN	WOMEN	MEN	WOMEN
EXECUTIVE, ADMINISTRATIVE & MANAGERIAL	27	8	3	1	1		31	9
NUMBER OF PERSONS ABOVE WITH ACADEMIC RANK	16	5	2	1	1		19	6
NUMBER OF PERSONS ABOVE WITH TENURE	11	4	2		1		14	4
INSTRUCTIONAL FACULTY (TENURED)	44	28	29	21	4	1	77	50
PROFESSORS	16	3	10	6	3		29	9
ASSOCIATE PROFESSORS	9	5	12	9	1	1	22	15
ASSISTANT PROFESSORS	18	14	7	5			25	19
INSTRUCTORS	1	6		1			1	7
LECTURERS								
INSTRUCTIONAL FACULTY (NON TENURED BUT ON TRACK)	33	31	21	10	3	1	57	42
PROFESSORS	3		2		1		6	
ASSOCIATE PROFESSORS	13	9	16	4	1		30	1
ASSISTANT PROFESSORS	13	8	4	2	1		11	7
INSTRUCTORS	4	9	1	3			15	11
LECTURERS								
INSTRUCTIONAL FACULTY (NOT ON TENURE TRACK)	3	5	1	2	1		5	7
PROFESSORS								
ASSOCIATE PROFESSORS				1	1		1	1
ASSISTANT PROFESSORS								
INSTRUCTORS	1	5			1	1	2	6
LECTURERS		1						1
OTHER FACULTY	2						2	
TEACHING & RESEARCH ASSISTANTS	18	28	1	4	1	2	20	34
PROFESSIONAL	20	8		1	1		21	169
SECRETARIAL & CLERICAL	23	29		1		1	23	29
TECHNICAL & PARAPROFESSIONAL	34	5	2				36	5
SKILLED CRAFTS	81	39	1	2			82	41
SERVICE & MAINTENANCE								
TOTAL	283	340	58	42	11	5	352	386

TABLE 34

NEW FULL-TIME EMPLOYEES BY RACE AND SEX,  
FALL 1980

OCCUPATIONAL ACTIVITY CATEGORY	BLACK		WHITE		OTHER		TOTAL	
	MEN	WOMEN	MEN	WOMEN	MEN	WOMEN	MEN	WOMEN
EXECUTIVE, ADMINISTRATIVE & MANAGERIAL	1						1	
NUMBER OF PERSONS ABOVE WITH ACADEMIC RANK	1						1	
NUMBER OF PERSONS ABOVE WITH TENURE								
INSTRUCTIONAL FACULTY (TENURED)					1		1	
PROFESSORS					1		1	
ASSOCIATE PROFESSORS								
ASSISTANT PROFESSORS								
INSTRUCTORS								
LECTURERS								
INSTRUCTIONAL FACULTY (NON-TENURED BUT ON TRACK)	5	4	2	1			7	5
PROFESSORS	1		1				2	
ASSOCIATE PROFESSORS	4	1			1		5	1
ASSISTANT PROFESSORS		1		1				2
INSTRUCTORS		2						2
LECTURERS								
INSTRUCTIONAL FACULTY (NOT ON TENURE TRACK)								
PROFESSORS								
ASSOCIATE PROFESSORS								
ASSISTANT PROFESSORS								
INSTRUCTORS								
LECTURERS								
TEACHING & RESEARCH ASSISTANTS						1	2	1
PROFESSIONAL	4	21			1		5	21
SECRETARIAL & CLERICAL	1	4					1	4
TECHNICAL & PARAPROFESSIONAL	1						1	
SKILLED CRAFTS	21	3					21	3
SERVICE & MAINTENANCE	35	32	2	2	2		39	34
TOTAL								

TABLE 35

RETIREMENTS, RESIGNATIONS AND DISMISSALS  
OF FULL-TIME EMPLOYEES, FALL 1980

OCCUPATIONAL ACTIVITY CATEGORY	BLACK		WHITE		OTHER		TOTAL	
	MEN	WOMEN	MEN	WOMEN	MEN	WOMEN	MEN	WOMEN
EXECUTIVE, ADMINISTRATIVE & MANAGERIAL	2	1					2	1
NUMBER OF PERSONS ABOVE WITH ACADEMIC RANK	2	1					2	1
NUMBER OF PERSONS ABOVE WITH TENURE	1	1					1	1
INSTRUCTIONAL FACULTY (TENURED)	4	1				1	4	2
PROFESSOR	2					1	2	1
ASSOCIATE PROFESSOR								
ASSISTANT PROFESSOR								
INSTRUCTOR								
LECTURER								
INSTRUCTIONAL FACULTY (NON-TENURED BUT ON TRACK)	2	2	1	2	1		4	4
PROFESSORS								
ASSOCIATE PROFESSORS	2				1	2	3	2
ASSISTANT PROFESSORS		1			1		1	1
INSTRUCTORS		1						1
LECTURERS								
INSTRUCTIONAL FACULTY (NOT ON TENURE TRACK)		1		1				2
PROFESSORS								
ASSOCIATE PROFESSORS								
ASSISTANT PROFESSORS								
INSTRUCTORS						1		1
LECTURERS		1						1
TEACHING & RESEARCH ASSISTANTS								
PROFESSIONAL	5	2			1	1	6	3
SECRETARIAL & CLERICAL								
TECHNICAL & PARAPROFESSIONAL								
SKILLED CRAFTS								
SERVICE & MAINTENANCE								
TOTAL	13	7	2	5	1		16	12

TABLE 35

RETIREMENTS, RESIGNATIONS AND DISMISSALS  
OF FULL-TIME EMPLOYEES, FALL 1980

OCCUPATIONAL ACTIVITY CATEGORY	BLACK		WHITE		OTHER		TOTAL	
	MEN	WOMEN	MEN	WOMEN	MEN	WOMEN	MEN	WOMEN
EXECUTIVE, ADMINISTRATIVE & MANAGERIAL	2	1					2	1
NUMBER OF PERSONS ABOVE WITH ACADEMIC RANK	2	1					2	1
NUMBER OF PERSONS ABOVE WITH TENURE	1	1					1	1
INSTRUCTIONAL FACULTY (TENURED)	4	1				1	4	2
PROFESSOR	2					1	2	1
ASSOCIATE PROFESSOR								
ASSISTANT PROFESSOR								
INSTRUCTOR								
LECTURER								
INSTRUCTIONAL FACULTY (NON-TENURED BUT ON TRACK)	2	2	1	2	1		4	4
PROFESSORS								
ASSOCIATE PROFESSORS	2				1	2	3	2
ASSISTANT PROFESSORS		1			1		1	1
INSTRUCTORS		1						1
LECTURERS								
INSTRUCTIONAL FACULTY (NOT ON TENURE TRACK)		1		1				2
PROFESSORS								
ASSOCIATE PROFESSORS								
ASSISTANT PROFESSORS								
INSTRUCTORS						1		1
LECTURERS		1						1
TEACHING & RESEARCH ASSISTANTS								
PROFESSIONAL	5	2			1	1	6	3
SECRETARIAL & CLERICAL								
TECHNICAL & PARAPROFESSIONAL								
SKILLED CRAFTS								
SERVICE & MAINTENANCE								
TOTAL	13	7	2	5	1		16	12



TABLE 36  
 PROMOTIONS OF FULL-TIME EMPLOYEES,  
 FALL 1980

OCCUPATIONAL ACTIVITY CATEGORY	BLACK		WHITE		OTHER		TOTAL	
	MEN	WOMEN	MEN	WOMEN	MEN	WOMEN	MEN	WOMEN
EXECUTIVE, ADMINISTRATIVE & MANAGERIAL								
NUMBER OF PERSONS ABOVE WITH ACADEMIC RANK	1						1	
NUMBER OF PERSONS ABOVE WITH TENURE								
INSTRUCTIONAL FACULTY (TENURED)								
PROFESSORS	2	2	3				5	2
ASSOCIATE PROFESSORS	1		1				2	
ASSISTANT PROFESSORS	1	2	2				3	2
INSTRUCTORS								
LECTURERS								
INSTRUCTIONAL FACULTY (NON-TENURED BUT ON TRACK)								
PROFESSORS	2	4	2	1			4	5
ASSOCIATE PROFESSORS	1	2	2	1			3	3
ASSISTANT PROFESSORS	1	2					1	2
INSTRUCTORS								
LECTURERS								
INSTRUCTIONAL FACULTY (NOT ON TENURE TRACK)								
PROFESSORS								
ASSOCIATE PROFESSORS								
ASSISTANT PROFESSORS								
INSTRUCTORS								
LECTURERS								
TEACHING & RESEARCH ASSISTANTS								
PROFESSIONAL	2	2					2	2
SECRETARIAL & CLERICAL								
TECHNICAL & PARAPROFESSIONAL								
SKILLED CRAFTS								
SERVICE & MAINTENANCE								
TOTAL	7	8	5	1			12	9

UNIVERSITY OF CALIFORNIA  
 LIBRARY  
 18  
 4

TABLE 37

MEAN SALARY BY OCCUPATIONAL ACTIVITY  
CATEGORY, RACE AND SEX, 1980-81

OCCUPATIONAL ACTIVITY CATEGORY	BLACK				WHITE				OTHER			
	MEN		WOMEN		MEN		WOMEN		MEN		WOMEN	
	N	MEAN	N	MEAN	N	MEAN	N	MEAN	N	MEAN	N	MEAN
EXECUTIVE, ADMINISTRATIVE & MANAGERIAL	9	\$25,128	3	\$23,612	1		1					
PROFESSIONAL	10	19,726	20	17,495	1		1		1		2	13,608
TECHNICAL & PARAPROFESSIONAL	23	13,190	28	12,716			1					
CLERICAL & SECRETARIAL	20	11,940	169	11,367			1		1			
SKILLED CRAFTS	35	13,306	5	12,432	2	13,572						
SERVICES & MAINTENANCE	84	8,127	41	8,135	1		2	8,169				

\* Salaries have been omitted from cells with only one person.

TABLE 38

SUMMARY:MEAN SALARIES OF FULL-TIME  
STAFF BY OCCUPATIONAL ACTIVITY  
CATEGORY, FALL 1980

OCCUPATIONAL ACTIVITY CATEGORY	NUMBER	MEAN
EXECUTIVE, ADMINISTRATIVE & MANAGERIAL	13	\$24,415
PROFESSIONAL	34	17,828
TECHNICAL & PARAPROFESSIONALS	52	12,874
CLERICAL & SECRETARIAL	191	11,217
SKILLED CRAFTS	42	13,215
SERVICES & MAINTENANCE	128	8,138

TABLE 39  
 MEAN SALARY OF SELECTED POSITIONS,  
 FALL 1980

OCCUPATIONAL ACTIVITY CATEGORY	NUMBER	MEAN SALARY
EXECUTIVE OFFICERS	6	\$42,624
DEANS	5	41,993
DIRECTORS	29	26,653
CHAIRPERSONS	22	31,496

LIBRARY  
 18  
 4

TABLE 40  
 REVENUES, EXPENDITURES AND ASSETS FOR  
 FISCAL YEAR, 1979-80

DESCRIPTION OF FINANCIAL STATEMENTS      AMOUNT IN DOLLARS

RESOURCES

<u>Table</u>		<u>Page</u>
40	Revenues, Expenditures and Assets for Fiscal Year, 1979-80	105
41	Current and Plant Funds for Fiscal Year, 1979-80	106
42	Student Tuition, Fees and Charges for the 1980-81 Academic Year Room and Board Plans for the Academic Year, 1980-81	107
43	Library Components for 1980-81	108

UNIVERSITY OF  
 CALIFORNIA  
 LIBRARY

TABLE 40

REVENUES, EXPENDITURES AND ASSETS FOR  
FISCAL YEAR, 1979-80

DESCRIPTION OF FINANCIAL STATISTICS	AMOUNT (IN DOLLARS)
CURRENT FUNDS REVENUES BY SOURCES	
TUITION & FEES	\$2,557,652
STATE	12,496,391
GOVERNMENT GRANTS & CONTRACTS	
FEDERAL, UNRESTRICTED	145,702
FEDERAL, RESTRICTED	3,179,384
STATE, UNRESTRICTED	22,298
STATE, RESTRICTED	275,253
LOCAL, UNRESTRICTED	
LOCAL, RESTRICTED	
PRIVATE GIFTS, GRANTS & CONTRACTS	
UNRESTRICTED	
RESTRICTED	163,027
ENDOWMENT INCOME	
UNRESTRICTED	12,961
RESTRICTED	51,383
SALES & SERVICES OF EDUCATIONAL ACTIVITIES	259,116
SALES & SERVICES OF AUXILIARY ENTERPRISES	3,893,902
SALES & SERVICES OF HOSPITALS	
OTHER SOURCES	7,190
INDEPENDENT OPERATIONS	
TOTAL CURRENT FUNDS REVENUE	23,064,259
CURRENT FUNDS EXPENDITURES & MANDATORY TRANSFER	
FUNCTION: EDUCATIONAL & GENERAL	
INSTRUCTION	9,383,664
RESEARCH	228,476
PUBLIC SERVICE	11,826
ACADEMIC SUPPORT (INCLUDING LIBRARIES)	2,192,661
STUDENT SERVICES	933,313
INSTITUTIONAL SUPPORT	2,826,655
OPERATION & MAINTENANCE OF PLANT	2,175,270
SCHOLARSHIPS & FELLOWSHIPS	
AWARDS FROM UNRESTRICTED FUNDS	250,642
AWARDS FROM RESTRICTED FUNDS	1,105,998
EDUCATIONAL & GENERAL MANDATORY TRANSFER	28,683
AUXILIARY ENTERPRISES (INCLUDING MANDATORY TRANSFERS)	4,413,444
HOSPITALS (INCLUDING MANDATORY TRANSFERS)	
INDEPENDENT OPERATIONS (INCLUDING MANDATORY TRANSFERS)	
TOTAL CURRENT FUNDS EXPENDITURES & MANDATORY TRANSFERS	\$23,550,632
PHYSICAL PLANT ASSETS	
LAND	
BOOK VALUE AT BEGINNING OF YEAR	512,281
ADDITIONS DURING YEAR	12,637
DEDUCTIONS DURING YEAR	499,644
BOOK VALUE AT END OF YEAR	
BUILDINGS	
BOOK VALUE AT BEGINNING OF YEAR	28,128,631
ADDITIONS DURING YEAR	1,525,276
DEDUCTIONS DURING YEAR	29,653,907
BOOK VALUE AT END OF YEAR	
EQUIPMENT	
BOOK VALUE AT BEGINNING OF YEAR	6,753,071
ADDITIONS DURING YEAR	582,113
DEDUCTIONS DURING YEAR	\$6,170,958
BOOK VALUE AT END OF YEAR	

TABLE 41  
 CURRENT AND PLANT FUNDS FOR FISCAL YEAR  
 1979-80

ACTIVITY CLASSIFICATION	AMOUNT (IN DOLLARS)
INSTRUCTION	\$9,383,664
ORGANIZED RESEARCH	228,476
PUBLIC SERVICE	11,826
ACADEMIC SUPPORT	2,192,661
STUDENT SERVICES	933,313
INSTRUCTIONAL SUPPORT	2,826,655
PHYSICAL PLANT OPERATIONS	2,175,270
AUXILIARY & INDEPENDENT OPERATIONS	4,413,444
STUDENT FINANCIAL AID	1,385,323
MULTI-ACTIVITY	
TOTAL	\$23,550,632

UNIVERSITY OF  
 CALIFORNIA  
 LIBRARY  
 18  
 4 T

TABLE 42

STUDENT TUITION, FEES AND CHARGES  
FOR THE 1980-81 ACADEMIC YEAR

CATEGORY	UNDERGRADUATE		GRADUATE	
	IN-STATE	OUT-OF-STATE	IN-STATE	OUT-OF-STATE
TUITION & ACADEMIC FEES	\$310.00	\$2048.00	\$310.00	\$2048.00
OTHER REQUIRED FEES			258.00	258.00
ATHLETIC FEE	48.00	48.00		
HEALTH SERVICES FEE	63.00	63.00		
CULTURAL SERIES				
STUDENT UNION				
GENERAL STUDENT ACTIVITY FEE	75.00	75.00		
DEBT SERVICES	87.00	87.00		
ACCIDENT & SICKNESS INSURANCE	32.25	32.25		
TOTAL TUITION & REEQUIRED FEES	583.00	2353.25	568.00	2306.00

ROOM AND BOARD PLANS FOR THE ACADEMIC  
YEAR

	PER YEAR	PER YEAR
DORMITORY ROOM RENT	\$695.00	\$695.00
BOARD PLANS (7-DAY)	700.00	



TABLE 43

## LIBRARY COMPONENTS, FALL 1980

LIBRARY COMPONENTS	AMOUNT
PERIODICALS & LIBRARY COLLECTIONS	
CURRENT PERIODICAL SUBSCRIPTIONS	3,019
LIBRARY COLLECTION	
BOOKSTOCK	
NUMBER OF VOLUMES	597,137
NUMBER OF TITLES (EXCLUDING DUPLICATE COPIES)	372,167
SEPARATE GOVERNMENT DOCUMENTS COLLECTION	72,475
MICROFORMS-ALL TYPES	
NUMBER OF BOOK TITLES REPRESENTED BY MICROFORMS	44,631
NUMBER OF PERIODICAL TITLES REPRESENTED BY MICROFORM	202
NUMBER OF PHYSICAL UNITS OF MICROFORMS NOT REPORTED ABOVE	3,235
PERIODICALS & AUDIOVISUAL MATERIALS-NUMBER OF TITLES	28,399
ALL OTHER LIBRARY MATERIALS, INCLUDING UNBOUND NON-CURRENT	34,553
LIBRARY OPERATING EXPENDITURES	\$598,236
SALARIES & WAGES	106,887
FRINGE BENEFITS	
WAGES OF STUDENTS ON AN HOURLY BASIS, CHARGED TO THE LIBRARY	3,606
SUPPLIES & MATERIALS	159,602
BOOKS	212,554
PERIODICALS	10,595
MICROFORMS	8,343
AUDIOVISUAL MATERIALS	27,121
ALL OTHER LIBRARY MATERIALS (EXCLUDING MICROFORMS)	12,650
BINDING & REBINDING	32,018
ALL OTHER OPERATING EXPENDITURES	1,171,612
TOTAL LIBRARY OPERATING EXPENDITURES	

XEROX  
 LIBRARY  
 TA  
 ST  
 18  
 4

## APPENDIX

The data used in this book were abstracted from annual North Carolina Higher Education Data Survey forms (NCHED), The University of North Carolina Higher Education General Information Survey forms (HEGIS), and the Office for Civil Rights (OCR) reports. The sources of basic data for each section are listed below.

### ENROLLMENT

- NCHED A-1.1 Resident Credit Enrollment, Fall 1968-1980
- OCR 2300-2.3 Fall Enrollment and Compliance Report of Institutions of Higher Education, 1976-1980
- NCHED A-1.6 Survey of Enrollment by Age, Fall 1975-1980
- NCHED A-1.3 "Home Base" of Students, Fall 1968-1980

### ADMISSIONS

- OCR B1 Students in Institutions of Higher Education - Applications, Acceptances and Actual Enrollment, Fall 1980
- NCHED A-4 Admission Practices, Fall 1980
- NCHED A-1.2 New Undergraduate Transfer Students, Fall 1968-1980
- NCHED A-7 Student Retention Data Survey, Fall 1980

### DEGREES CONFERRED

- HEGIS 2300-2.1 Degrees and Other Formal Awards Conferred, 1967/68-1980-81
- NTE Yearly Reports to the Education Department, 1972-1980

### FINANCIAL AID

- NCHED A-10 Student Financial Aid Summary, Fall 1980
- OCR B3 Financial Assistance to Students in Institutions of Higher Education, Fall 1980

ALL INSTRUCTIONAL FACULTY

HEGIS 2300-3                      Salaries, Tenure and Fringe Benefits of Full-Time  
Instructional Faculty, 1968/69 - 1980-81

Separate Analyses done by the Office of Institutional  
Studies

FULL-TIME INSTRUCTIONAL FACULTY

HEGIS 2300-3                      Salaries, Tenure and Fringe Benefits of Full-Time  
Instructional Faculty, 1968/69 - 1980-81

Separate Analyses done by the Office of Institutional  
Studies

FACULTY AND STAFF

OCR A1A                              Employees in Institutions of Higher Education,  
Fall 1980

OCR A1B                              New Employees in Institutions of Higher Education,  
Fall 1980

OCR A3                                Retirements, Resignations and Dismissals of Employees  
in Institutions of Higher Education, Fall 1980

OCR A4                                Promotions of Employees in Institutions of Higher  
Education, Fall 1980

RESOURCES

NCHED A-11                         Report on Sources and Uses of University Current  
and Plant Funds, Fiscal Year 1979-80

HEGIS 2300-4                        Financial Statistics of Institutions of Higher  
Education for Fiscal Year Ending 1980

NCHED A-6                            College and University Libraries, Fall 1980

UNIVERSITY  
STREET  
18  
4