

NCCU FACT BOOK

A STATISTICAL ABSTRACT OF
SIGNIFICANT CHARACTERISTICS
OF NORTH CAROLINA
CENTRAL UNIVERSITY 1979-80

Office of Research, Evaluation and Planning
North Carolina Central University
Durham, North Carolina 27707

JUNE 1980

1⁴ Q¹³ Y⁸ Σ⁹ 6⁷ 8¹² 0¹ NST
X² Z⁶ Z^R Z^Q Σ^{XY} P⁵ R^T
6⁷ N^{XY} F⁴ 2^{XY} R⁵
1^Σ A³ M^P T^P
8^μ 0¹ NST
NF^σ 6^M 4^T

PREFACE

This publication of the Office for Research, Evaluation, and Planning updates previous volumes of the NCCU Fact Book. It presents various significant facts which have been found useful in the past regarding NCCU's students, faculty, staff, and budget. The format of this volume is very similar to that of the previous volumes. The purpose of this volume is to increase the usefulness of the data.

NCCU FACT BOOK

A STATISTICAL ABSTRACT OF SIGNIFICANT CHARACTERISTICS

OF NORTH CAROLINA CENTRAL UNIVERSITY

1979-1980

The fact book for 1979-1980, like all others, has been a real challenge. The data were gathered by computer, although this will change in the future. The fact book is a useful tool for the "debate" over the university program. I would like to give special thanks to the following persons, who are responsible for this year's fact book: Larry D. Davis who was responsible for the design, compilation, and proof-reading; James H. Hester who was responsible for the data; and John Wells for proof-reading. Special thanks go to the computerized information and statistical section and to the staff for designing the original cover.

Harmon P. Hill

Harmon P. Hill
Associate Vice-Chancellor for
Academic Affairs for Research,
Evaluation, and Planning

Office for Research, Evaluation, and Planning
North Carolina Central University
Durham, North Carolina 27707

June 1980

P R E F A C E

This publication of the Office for Research, Evaluation, and Planning updates previous volumes of the NCCU Fact Book. It presents various significant facts which have been found useful in the past regarding NCCU's students, faculty, staff, and budget. The format of this volume is very similar to that of 1978-79 in which many changes were made to increase its usefulness in different planning activities.

We appreciate the favorable reactions to the 1978-79 NCCU Fact Book from persons on and off campus. Our special appreciation is extended to the different offices on campus for their support and cooperation in providing the necessary data, without which this volume would not be possible. Since the Office for Research, Evaluation, and Planning must update this book on an annual basis, suggestions for its emendation in 1980-81 are most welcome.

For the past year, as well as this year, all tables (and even a map) in the Fact Book were generated by computer. Although this will make future updates to the Fact Book faster and easier, we still had to "debug" some of the computer programs. I would like to give special thanks to the following persons, who are responsible for this year's Fact Book: Sandy H. Davis who was responsible for its design, compilation, and production; Zakia Rasheed for data entry and checking data; Joan Wells for proofreading; George Bowie for designing the computerized information and retrieval system and Merriel Jay for designing the original cover.

Norman P. Uhl

Norman P. Uhl
Associate Vice-Chancellor for
Academic Affairs for Research,
Evaluation, and Planning

June 1980

CONTENTS

	<u>Page</u>
Preface	i
General Background and Organization	1
Student Data	24
Enrollment	38
Admissions	47
Degrees Conferred	56
Financial Aid	
Faculty and Staff	61
All Instructional Faculty	83
Full-Time Instructional Faculty	110
Faculty and Staff	
Resources	118
Finances	118
Student Cost	118
Library Resources	
Appendix	124

GENERAL BACKGROUND AND ORGANIZATION

	<u>Page</u>
Non-Discrimination Statement of Policy	2
General Background and Organization	3
Academic Organization	10
Degree Programs and Program Tracks	11
The University of North Carolina	17
Board of Governors, 1979-1980	18
Officers of General Administration, 1979-1980	
North Carolina Central University	19
Board of Trustees, 1979-1980	20
NCCU Organization Chart	21
Officers and Administrative Staff, 1979-1980	

NON-DISCRIMINATION STATEMENT OF POLICY

NORTH CAROLINA CENTRAL UNIVERSITY is dedicated to equality of opportunity within its community. Accordingly, NORTH CAROLINA CENTRAL UNIVERSITY does not practice or condone discrimination, in any form, against students, employees, or applicants on the grounds of race, color, national origin, religion, sex, age, or handicap. NORTH CAROLINA CENTRAL UNIVERSITY commits itself to positive action to secure equal opportunity regardless of those characteristics.

NORTH CAROLINA CENTRAL UNIVERSITY supports the protections available to members of its community under all applicable Federal laws, including Titles VI and VII of the Civil Rights Act of 1964, Title IX of the Education Amendments of 1972, Sections 799A and 845 of the Public Health Service Act, the Equal Pay and Age Discrimination Acts, the Rehabilitation Act of 1973, and Executive Order 11246. For information concerning these provisions, contact: Director of Affirmative Action, Room 201, Administration Building, North Carolina Central University, Durham, North Carolina 27707, Telephone 683-6254 or 683-6472.

PURPOSE OF THE INSTITUTION

North Carolina Central University offers undergraduate instruction in the arts and sciences and in business and education. In addition, it conducts a number of graduate programs leading to the master's degree in these areas. The University offers post-graduate, first-degree professional programs through its Schools of Law and Library Science.

The University's authority to offer instruction and to confer degrees derives from The University of North Carolina through its Board of Governors, under the legislation which created the unified University of North Carolina on October 30, 1971.

Through the undergraduate program (and to some extent through the graduate and professional programs) attention is directed to the achievement of the following:

1. Development of perspective and intellectual strength for the endeavors of a lifetime.
2. Acquaintance with our cultural heritage as a background for understanding and relating to the existing social order.
3. Provision of a climate for high-quality learning with special emphasis on education for knowledge, intelligent, responsive participation in the home, the community, and a career.
4. A liberal education with a number of opportunities in specialized education so that students are prepared to pursue various professional careers with confidence and competence.
5. Recognition of the need for continuous learning throughout one's life in order to be effective, responsible citizens in a rapidly changing society.

HISTORICAL SKETCH

North Carolina Central University, the first state-supported liberal arts institution for blacks in the United States, was founded by its late President, Dr. James E. Shepard. From the beginning, its purpose has been the development in young men and women of that fine character and sound academic training requisite for real service to the nation. To this end, the training of all students has been entrusted to the most capable teachers available.

Originally known as the National Religious Training School and Chautauqua, the university was first chartered in 1909 as a private institution and opened to students on July 10, 1910. The institution's early years were characterized by wealth of enthusiasm and high endeavor, but not of money. Private donations and student fees constituted the total financial support of the school, and the heavy burden of collecting funds rested on one man, the President.

In 1915, the school was sold and reorganized, then becoming the National Training School. During this period, Mrs. Russell Sage of New York was a generous benefactor of the school.

The General Assembly of North Carolina appropriated funds for the purchase and maintenance of the school in 1923; thus in that year it became a publicly-supported institution, and was named Durham State Normal School. Two years later the Legislature converted it into the North Carolina College for Negroes, dedicating it to the offering of liberal arts education and the preparation of teachers and principals for secondary schools.

At its 1927 session, the General Assembly began a program of expansion of the college plant to conform to the needs of an enlarged academic program. The sincere interest of the Honorable Angus W. McLean, then Governor of North Carolina, and his belief in the institution aided greatly in the promotion of this program. State appropriations were supplemented by a generous gift from the late B.N. Duke, and by contributions from citizens of Durham.

The first four-year college class was graduated in 1929. The alumni register of the institution now bears the names of distinguished citizens of the nation, as well as of other worthy individuals who daily contribute significantly to the leadership and development of their local communities.

The University was accredited by the Southern Association of Colleges and Secondary Schools as an "A" class institution in 1937 and was admitted to membership in this association in 1957. It has also been approved by the Association of American Universities and the National Council for the Accreditation of Teacher Education and holds an "A" rating with the American Medical Association and the North Carolina State Department of Public Instruction.

From the 1930's until the beginning of World War II, federal grants and state appropriations enabled the university to begin a new program of physical expansion and improvement of educational facilities.

The General Assembly of 1939 authorized the establishment of graduate work in liberal arts and the professions. Pursuant thereto graduate courses in the Arts and Sciences were first offered in that same year; the School of Law began operation in 1940, and the School of Library Science was established in 1941.

In 1947, the State Legislature changed the name of the institution to the North Carolina College at Durham.

On October 6, 1947, the college suffered irreparable loss through the death of its founder and President, Dr. James E. Shepard. The Board of Trustees appointed an Interim Committee, consisting of Dr. Albert E. Manley, Dean of the College of Arts and Sciences, Miss Ruth G. Rush, Dean of Women, and Dr. Albert L. Turner, Dean of the School of Law, which administered the affairs of the institution until the election of the second president.

Dr. Alfonso Elder was elected President of the institution on January 20, 1948. At the time of his election Dr. Elder was serving as head of the Graduate Department of Education and had formerly been Dean of the College of Arts and Sciences. Dr. Elder retired September 1, 1963.

Dr. Samuel P. Massie was elected as the third President of the College on August 9, 1963, and assumed the office on September 1, 1963. Dr. Massie came to the institution from Washington, D.C., where he was Associate Program Director for Undergraduate Science Education of the National Science Foundation and Professor and Chairman of the Department of Pharmaceutical Chemistry at Howard University. He resigned on February 1, 1966.

The Board of Trustees appointed an Interim Committee, consisting of William Jones, Business Manager, Dr. Helen G. Edmonds, Graduate Dean, and Dr. William H. Brown, Professor of Education, to administer the affairs of the institution until the fourth president took office.

Dr. Albert N. Whiting was named fourth president of the institution on July 20, 1966. He came to North Carolina College from Baltimore, Maryland, where he had served for several years as Dean of Faculty of Morgan State College. Dr. Whiting assumed the office on July 1, 1967.

In 1969, the State Legislature again changed the name of the institution to North Carolina Central University. On July 1, 1972, North Carolina Central University became a constituent institution of the University of North Carolina.

MISSION

The primary mission of North Carolina Central University continues to be to educate young men and women who, in their private and professional lives will have the potential to advance the general welfare of all citizens of the State.

Initially founded as an educational institution for black people, the University has consistently demonstrated a capacity to adjust to the changing attitudes and needs of society. During the 70-year span of the life of the

University, the social attitudes have shifted from "separate" to "separate but equal" to "integrated;" and integration has expanded from the "melting pot" concept to include provisions for cultural diversity and ethnic identity. Now, NCCU, along with General Administration and the other campuses of The University, is engaged in an effort to remove the remaining vestiges of the dual system of higher education spawned by the "separate but equal" doctrine.

NCCU has had to demonstrate the flexibility to respond to these changes in attitude. At this juncture in its history, North Carolina Central University subscribes to the belief that its educational pattern must be so shaped as to prepare its students for participation, both professional and lay, in an unsheltered, integrated society and that national performance norms, in all areas, must be the guiding and determinative measures, and the objective should be the maximum possible attainment above these norms.

Acknowledging the fact that for the foreseeable future, at least, the majority of its students will represent the underprivileged, often poorly prepared, non-white and low-income people of the State, the University is committed to developing the kinds of academic and non-academic programs which can bring such students into the mainstream of American society, and which will equip them to enjoy the advantages and responsibilities of first class citizenship, and which, at the same time, will attract and serve effectively the total population of the State.

Implicit in this resolve is the recognition of the need to make special and determined efforts to create such a sense of pride and self-esteem in ethnic and social identification that NCCU constituents want to share rather than jealously guard their ethnic and cultural heritage. Thus, there is the imperative that the educational program emphasize the historical and creative contributions of black people to the nation and the world within the framework of legitimate and relevant academic disciplines and methodologies so that NCCU graduates feel so secure in the value and worth of their own heritage and culture that they have no need to fear or denigrate the culture and heritage of other groups.

North Carolina Central University is, thus, dedicated to the proposition that it must continually seek to become a "realized force" in local community, State and regional developments, and a cultural resource of recognized significance in the eyes of all people. Finally, NCCU operates so that in the not-too-distant future, it will be increasingly viewed, not alone in the image of a predominantly black institution, but also as a dynamic, innovative university with programs effectively responsive to the needs of the State of North Carolina and dedicated to the service of all the citizens--white and non-white--in the southern region.

In his inaugural address on April 27, 1968, the present Chancellor, Dr. Albert N. Whiting, presented a seven-point set of goals for higher education:

1. We should preserve student curiosity, heighten intellectual aspirations, reduce the impersonal quality of college life, and prevail against mere mechanical instruction.

2. We should make every effort to encourage a physical environment and social climate conducive to educational, moral cultural, and esthetic growth.
3. We should regard teaching and positive productive relationships with students on a basis equivalent to the rewards for research and professional publications. Particularly, should this be true at a liberal arts college.
4. We should give concerted attention to the creation of a campus community whose dominant axis of interest is intellectual discovery rather than early specialization and professionalization.
5. We should make the pursuit of intellectual discovery a partnership between junior and senior participants; therefore, we should involve students in shaping the educational environment in which they work, live, and grow.
6. We should extend our teaching beyond the accumulation of academic knowledge to give the students growth in maturity and judgement, so that they can see the relevance of their knowledge to the quality of their own lives and that life in relation to the kinds of judgements they make.
7. We should strive vigorously to develop programs and teaching techniques geared not only for the privileged and the intellectual elite, but for those of less developed intelligence and less advantage. The realities of our society require higher education for the masses. Colleges, therefore, must re-orient their goals and programs to this fact. If they engage students' feelings and intellect...then, hopefully, learning will result in the desired behavioral change.

Toward these ends, sixteen high priority university goals were selected for the 1979-80 year by NCCU's Planning and Budgeting Council:

1. To improve the recruitment system (e.g., to identify and admit a larger number of academically talented students of all races, creeds, colors, age groups, etc.) and to offer scholarships for academic excellence.
2. To establish a reputation that would be more competitive with predominantly white institutions that are currently attracting the caliber of students that we wish to enroll, enabling us to be more competitive in our recruitment efforts.
3. To assure the mastery of basic communication skills and to provide for their continuous reinforcement throughout the University. (p. 32 #1)

4. To broaden a scholarship program designed to attract students of high academic potential without concern for financial need.
5. To acquire the resources necessary to support teaching, research, and learning, both directly through the administration's own efforts, and indirectly through provision of information on funding sources and other matters to faculty and students.
6. To encourage excellence in teaching.
7. To attract and retain highly qualified faculty.
8. To develop and maintain a planning and budgeting process that will ensure that accountability, efficiency and effectiveness are evident in the implementation of the goals and objectives of the University.
9. To assure that all accrediting agency criteria and appropriate professional group standards are met by the departments and schools of the University. (p. 32 #4)
10. To make every effort to encourage a physical environment conducive to educational, moral, cultural, and aesthetic growth.
11. To implement an improved registration system.
12. To continue to strive for high levels of professional training in law, nursing, business, education, and library science.
13. To support and strengthen the academic, research and cultural programs of the University by continuing the efforts of faculty and staff to increase and improve resource development.
14. To maintain the quality and strengthen, as necessary, programs at the master's level.
15. To develop a comprehensive counseling program (e.g. medical, academic, vocational, social, emotional, and financial).
16. To give priority to the employment of additional staff personnel in understaffed areas.

ACCREDITATION

North Carolina Central University is accredited as an "A" rated institution by the North Carolina State Department of Public Instruction and the American Medical Association.

It is approved as a whole or through its components by:

Association of American Universities
American Bar Association
American Library Association
National Council for Accreditation of Teacher Education
The Accrediting Service, National League for Nursing
North Carolina Board of Legal Examiners
North Carolina Board of Nursing

It holds membership in:

The Southern Association of Colleges and Schools
American Association of Colleges for Teacher Education
American Council on Education
Council of Member Agencies, Department of Baccalaureate
and Higher Degree Programs
The Council of Graduate Schools in the United States
National Association of Summer Session
American Assembly of Collegiate Schools of Business

Source:

Bulletin of North Carolina Central University, 1978-1980

ACADEMIC ORGANIZATION

North Carolina Central University is classified as a comprehensive post-secondary institution. It offers programs at the baccalaureate, master's and first-professional levels. Its instructional programs are organized into these colleges and professional schools: Undergraduate College of Arts and Sciences, Graduate School of Arts and Sciences, School of Business, School of Law, and School of Library Science. Its authorized degree programs are listed on the following pages.

DEGREE PROGRAMS AND PROGRAM TRACKS

North Carolina Central University is authorized to offer degree programs in 14 discipline divisions at the baccalaureate, master's and professional levels. The programs and program tracks under each of these divisions with program titles, degrees, and tracks are as follows:

HEGIS Code	Division and Program Title	Level	Degree and Program Track
0400	<u>BIOLOGICAL SCIENCES</u>		
	0401 Biology, General	Bachelor's	B.S., Biology B.S., Biology, Secondary Education
	0401 Biology, General	Master's	M.S., Biology M.S., Biology, Secondary Education
0500	<u>BUSINESS AND MANAGEMENT</u>		
	0502 Accounting	Bachelor's	B.B.A., Accounting
	0506 Business Management and Administration	Bachelors'	B.B.A., Business Administration
	0506 Business Management and Administration	Master's	M.B.A., Business Administration
	0517 Business Economics	Bachelor's	B.B.A., Economics B.A., Economics
0800	<u>EDUCATION</u>		
	0802 Elementary Education, General	Bachelor's	B.S., Elementary Education, Intermediate (4-9) B.A., Early Childhood Education (K-3)
	0802 Elementary Education, General	Master's	M.A., Elementary Education (Early Childhood and Intermediate) M.Ed., Elementary Education (Early Childhood and Intermediate)

DEGREE PROGRAMS AND PROGRAM TRACKS (Continued)

HEGIS Code	Division and Program Title	Level	Degree and Program Track
0800	<u>EDUCATION</u> (Continued)		
0808	Special Education, General	Master's	M.Ed., Education of Mentally Retarded M.Ed., Education of the Emotionally Disturbed
0815	Speech Correction	Master's	M.Ed., Speech and Hearing Education
0826	Student Personnel (Counseling and Guidance)	Master's	M.A., Student Personnel (Counseling and Guidance) M.A., Career Counseling and Placement M.A., Agency Counseling
0835	Physical Education	Bachelor's	B.S., Physical Education
0835	Physical Education	Master's	M.A., Physical Education M.S., Physical Education, Secondary Education
0837	Health Education (including Family Life Education)	Bachelor's	B.S., Health Education B.S., Community Health Education
0838	Business, Commerce, and Distributive	Bachelor's	B.S.C., Business Education, Secondary Basic B.S.C., Business Education, Secondary Comprehensive
0838	Business, Commerce, and Distributive Education	Master's	M.S., Business Education, Secondary
0893	Educational Administration and Supervision	Master's	M.A., Educational Administration Supervision
0895	Health and Physical Education	Bachelor's	B.S., Physical Education
0897	Educational Media	Master's	M.A., Instructional Media

DEGREE PROGRAMS AND PROGRAM TRACKS (Continued)

HEGIS Code	Division and Program Title	Level	Degree and Program Track
1000	<u>FINE AND APPLIED ARTS</u>		
1002	Art (Painting, Drawing, Sculpture)	Bachelor's	B. A., Art, General B. A., Visual Communications B. A., Art, Fine Art B. A., Art: Art Education
1005	Music (Liberal Arts Program)	Bachelor's	B. A., Music (Liberal Arts Program) B. A., Music: Music Education
1005	Music (Liberal Arts Program)	Master's	M. A., Music (Liberal Arts Program) M. A., Music Education, K-12
1007	Dramatic Arts	Bachelor's	B. A., Dramatic Arts B. A., Dramatic Arts, Secondary Education B. A., Theatre Arts Education, K-12
1100	<u>FOREIGN LANGUAGES</u>		
1102	French	Bachelor's	B. A., French B. A., French, Secondary Education
1102	French	Master's	M. A., French M. A., French, Secondary Education
1103	German	Bachelor's	B. A., German B. A., German, Secondary Education
1105	Spanish	Bachelor's	B. A., Spanish B. A., Spanish, Secondary Education
1200	<u>HEALTH PROFESSIONS</u>		
1203	Nursing	Bachelor's	B. S. N., Nursing

DEGREE PROGRAMS AND PROGRAM TRACKS (Continued)

HEGIS Code	Division and Program Title	Level	Degree and Program Track
1300	<u>HOME ECONOMICS</u>		
1301	Home Economics, General	Bachelor's	B. S. H. E., Home Economics, General B. S. H. E., Home Economics, Secondary Education
1301	Home Economics, General	Master's	M. S., Home Economics Education
1303	Clothing and Textiles	Bachelor's	B. S. H. E., Clothing and Textiles
1306	Foods and Nutrition (including Dietetics)	Bachelor's	B. S. H. E., Foods and Nutrition (including Dietetics)
1400	<u>LAW</u>		
1401	Law, General	Professional	L. L. B., Law J. D., Law
1500	<u>LETTERS</u>		
1501	English, General	Bachelor's	B. A., English B. A., English, Secondary Education
1501	English, General	Master's	M. A., English
1509	Philosophy	Bachelor's	B. A., Philosophy
1600	<u>LIBRARY SCIENCE</u>		
1601	Library Science, General	Master's	M. L. S., Library Science
1700	<u>MATHEMATICS</u>		
	Mathematics, General	Bachelor's	B. S., Mathematics B. S., Mathematics, Secondary Education

DEGREE PROGRAMS AND PROGRAM TRACKS (Continued)

HEGIS Code	Division and Program Title	Level	Degree and Program Track
1700	<u>MATHEMATICS</u> (Continued)		
1701	Mathematics, General	Master's	M. S., Mathematics M. S., Mathematics, Secondary Education
1900	<u>PHYSICAL SCIENCES</u>		
1902	Physics, General (excluding Biophysics)	Bachelor's	B. S., Physics B. S., Physics, Secondary Education
1905	Chemistry, General (excluding Bio-chemistry)	Bachelor's	B. S., Chemistry B. S., Chemistry, Secondary Education
1905	Chemistry, General (excluding Bio-chemistry)	Master's	M. S., Chemistry M. S., Chemistry, Secondary Education
2000	<u>PSYCHOLOGY</u>		
2001	Psychology, General	Bachelor's	B. A., Psychology
2001	Psychology, General	Master's	M. A., Psychology
2100	<u>PUBLIC AFFAIRS AND SERVICES</u>		
2103	Parks and Recreation Management	Bachelor's	B. S., Recreation Administration
2103	Parks and Recreation Management	Master's	M. S., Recreation Administration
2105	Law Enforcement and Corrections	Bachelor's	B. A., Political Science: Criminal Justice
2200	<u>SOCIAL SCIENCES</u>		
2201	Social Sciences, General	Bachelor's	B. A., Social Sciences

DEGREE PROGRAMS AND PROGRAM TRACKS (Continued)

HEGIS Code	Division and Program Title	Level	Degree and Program Track
2200	<u>SOCIAL SCIENCES</u>		
2205	History	Bachelor's	B.A., History B.A., History, Secondary Education
2205	History	Master's	M.A., History M.A., History, Secondary Education
2206	Geography	Bachelor's	B.S., Geography
2207	Political Science and Government	Bachelor's	B.A., Political Science B.S., Political Science
2208	Sociology	Bachelor's	B.A., Sociology
2208	Sociology	Master's	M.A., Sociology
2211	Afro-American (Black Culture) Studies	Bachelors'	B.A., Black Studies

Source:

Academic Program Inventory, The University of North Carolina, July 1978.

THE UNIVERSITY OF NORTH CAROLINA

BOARD OF GOVERNORS

William A. Johnson
Mrs. Howard Holderness
Dr. E. B. Turner

Chairperson
Vice Chairperson
Secretary

Class of 1981

Hugh Cannon
Phillip G. Carson
T. Worth Coltrane
George Watts Hill
Mrs. Hugh Morton
Jack O'Kelley
J. J. Sansom, Jr.

Assistant to the President

Assistant to the President
for Government Affairs

Assistant to the President

Assistant to the President
for Public Information

Assistant to the President
for Relations with Faculty

Assistant to the President
and University-wide and the
Community College

Special Assistant to the President

Special Assistant to the President

Secretary of the Board

Vice President
for Academic Affairs

Vice President for

Vice President for

Acting Vice President
for Research and Public Service

Vice President for Student
Services and Special Programs

Associate Vice President
for Academic Affairs

Raleigh
Asheville
Asheboro
Durham
Linville
Burlington
Raleigh

Charlotte
Winston-Salem
Gastonia
Greensboro
Raleigh
Hazelwood
Washington
Hickory

Class of 1983

Irwin Belk
Wayne A. Corpenting
Daniel C. Gunter, Jr.
Mrs. Howard Holderness
John R. Jordan, Jr.
J. Aaron Prevost
Louis T. Randolph
Harley F. Shuford, Jr.

Class of 1985

Furman P. Bodenheimer
Laurence A. Cobb
John Edwin Davenport
Charles Z. Flack, Jr.
James E. Holmes
Mrs. John L. McCain
Reginald F. McCoy
Maceo A. Sloan

Cary
Charlotte
Nashville
Forest City
Winston-Salem
Wilson
Laurinburg
Durham

Class of 1987

B. Irvin Boyle
William A. Dees, Jr.
Mrs. Frank Epps
Jacob H. Froelich, Jr.
The Honorable James E. Holshouser
William A. Johnson
Robert L. Jones
E. B. Turner

Charlotte
Goldsboro
Lumberton
High Point
Southern Pines
Lillington
Raleigh
Lumberton

THE UNIVERSITY OF NORTH CAROLINA
OFFICERS OF GENERAL ADMINISTRATION

1979-80

William C. Friday	President
Zona C. Norwood	Assistant to the President
Roscoe D. McMillan	Assistant to the President for Government Affairs
Richard H. Robinson	Assistant to the President
James L. Jenkins	Assistant to the President for Public Information
Arnold K. King	Assistant to the President for Relations with Faculty Assembly, Private Colleges and Universities and the Community College System
David N. Edwards, Jr.	Special Assistant to the President
Jeffrey H. Orleans	Special Assistant to the President
John P. Kennedy	Secretary of the University
George E. Bair	Director of Educational Television
Raymond H. Dawson	Vice President for Academic Affairs
L. Felix Joyner	Vice President for Finance
Roy Carroll	Vice President for Planning
Donald J. Stedman	Acting Vice President for Research and Public Service Programs
Cleon F. Thompson	Vice President for Student Services and Special Programs
Robert W. Williams	Associate Vice President for Academic Affairs

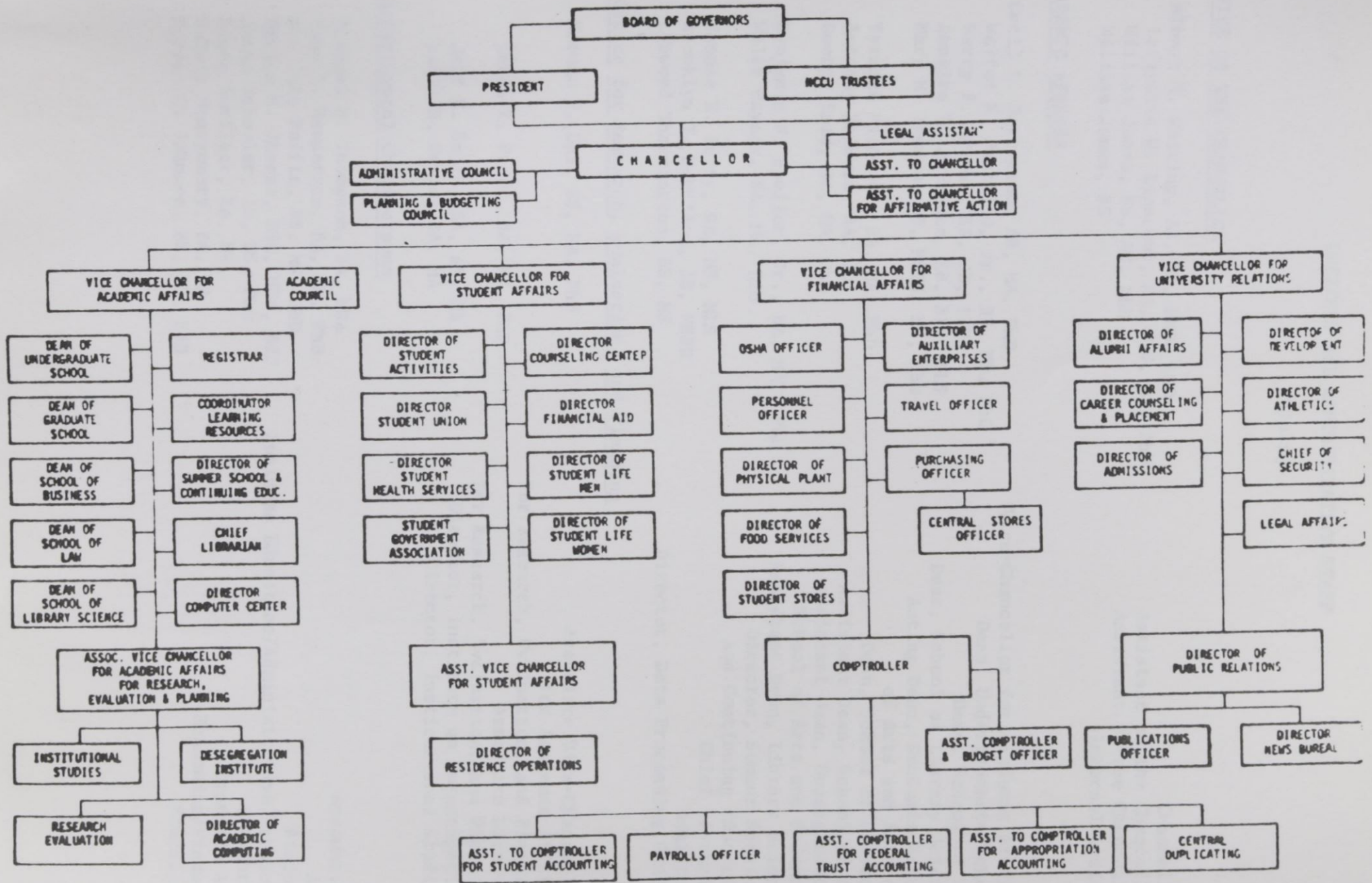
NORTH CAROLINA CENTRAL UNIVERSITY

BOARD OF TRUSTEES

MAY 1, 1980

Frank W. Ballance	Warrenton
Gail H. Blackburn	Durham
George Watts Carr, Jr.	Durham
William A. Clement (Chairperson)	Durham
Robert E. Dawson	Durham
George C. Debnam (Vice-Chairperson)	Raleigh
Robinson O. Everett	Durham
Hiliary H. Holloway	Philadelphia
June M. Jeffers	Reidsville
Josephine Strayhorne (Secretary)	Durham
Clarence Walker	Charlotte
Alfred Whitesides	Asheville
Dennis Sloan	President, Student Government Association 1979-80 (Ex-Officio Member)

NCCU ORGANIZATION CHART



OFFICERS AND ADMINISTRATIVE STAFF

1979-80

OFFICE OF THE CHANCELLOR

Albert N. Whiting, AB, MA, PhD, LLD	Chancellor
LaFayette W. Lipscomb, BA, MLS, MS, PhD	Assistant to the Chancellor
William Jones, BS, AM, LLD	Assistant to the Chancellor
William James, BS	Internal Auditor

ACADEMIC AFFAIRS

Cecil L. Patterson, AB, MA, PhD	Vice-Chancellor for Academic Affairs
Walter H. Pattillo, Jr., BS, MS, PhD	Dean, Undergraduate School
Harry E. Groves, BA, JD, LLM	Dean, School of Law
Annette L. Phinazee, AB, BLS, DLS	Dean, School of Library Science
Mary M. Townes, BS, MSPH, MS, PhD	Acting Dean, Graduate School of Arts and Sciences
Tyronza Richmond, BA, MA, PhD	Dean, School of Business
Anthony Baldwin, BA, JD	Assistant Dean, School of Law
George Reid, BA, MA, PhD	Assistant Dean, Undergraduate School of Arts and Sciences
Benjamin F. Speller, Jr., BA, MAT, PhD	Assistant Dean, Library Science
Waltz Maynor, BA, MA, EdD	Director, Summer Sessions and Continuing Education
Pennie E. Perry, BA, MS, MLS	Chief Librarian
Brooklyn T. McMillon, AB, MSPH	Registrar
Lynwood Tharrington, BS, MS	Director, Data Processing Center

Office for Research, Evaluation, and Planning

Norman P. Uhl, BS, MA, PhD	Associate Vice-Chancellor for Academic Affairs for Research, Evaluation, and Planning
Linda K. Pratt, BA, MA, PhD	Associate Director for Research, Evaluation, and Planning
Jeff E. Smith, BA, AM, MA	Director, Institute on Desegregation
Sandy H. Davis, BA, MA	Director, Institutional Studies

Departmental Chairpersons

Raphael N. Thompson, BA, MBA	Accounting
Lana T. Henderson, BA, MA, PhD	Art
Dr. John Ruffin, BS, MS, PhD	Biology
Marion H. Thorne, BSC, MEd, EdD	Business Education/Administrative Services
James Schooler, AB, MS, PhD	Chemistry
Linda Norfleet, BA, MA	Dramatic Art
Robert Montgomery, BA, MA	Economics/Finance
Norman C. Johnson, BS, MS, EdD	Education

Departmental Chairpersons (continued)

Patsy B. Perry, BA, MA, PhD	English
Woodrow W. Nichols, BA, MA, PhD	Geography
Howard M. Fitts, BS, MSPH, EdD	Health Education
Percy Murray, BA, MA, PhD	History and Social Science
Beverly A. Nichols, BS, MS, EdD	Home Economics
William T. Fletcher, BS, MS, PhD	Mathematics
Sundar W. Fleming, AB, MBA	Management/Marketing
Henri Armand, BA, MA, PhD	Modern Foreign Languages
Gene Strassler, BS, MS, MA, PhD	Music
Johnea D. Kelley, BSN, MA, DPH	Nursing
Robert J. Clack, AB, MA, PhD	Philosophy
Ross E. Townes, BS, MS, PED	Physical Education and Recreation
Ki-Hyon Kim, SS, PhD	Physics
Golam Choudhury, BA, MA, PhD	Political Science
Leslie Brinson, BA, MA, PhD	Psychology
George Conklin, AB, MA, PhD	Sociology

Financial Affairs

George T. Thorne, BSC, MS	Vice-Chancellor for Financial Affairs
Clyde B. Thorpe, BS	OSHA Officer
Aletha Rease, BSC	Personnel Officer
William E. McDonald, BSEE	Director of Physical Plant
Robert P. Smith, BS	Director of Food Services
Norman P. Pearson, BSC	Director of Student Stores
VACANT	Director of Auxiliary Enterprises
Shirley B. Ragland, AAS	Travel Officer
Rebecca P. Edmonds, BSC, MA	Purchasing Officer
Mernoy E. Harrison, BS, MBA	Comptroller
James W. Davis, BS, MS	Assistant Comptroller

Student Affairs

James F. Blue, BS, MEd, PhD	Vice-Chancellor for Student Affairs
Roger Bryant, BS, MA, EdD	Asst. Vice-Chancellor for Student Affairs
Shirley Green, BA, MA	Director of Residence Operations
Marion E. Covington	Director of Student Activities
Thurman Prescott, Jr., BA	Director of Student Union
Glen R. Martin, BS, MS, BD, ThM, EdD	Director of Counseling Center
Wallace C. Blackwell, BSC, MA	Director of Financial Aid
Mildred V. Trent, BA, MA	Director of Student Life for Women
John D. Lennon, BS, MS	Director of Student Life for Men
Marcono R. Hines, BS, MD	Director of Student Health Services

University Relations

S. Dallas Simmons, BS, MS, PhD

William P. Evans, BS
Lindsey Merritt, BSC, MS

Maria B. Creed, BSC, MS
William P. Malone, BS, MSPH
C. Francis A. Silva, BS, MS
John W. Smith, BA
Alex M. Rivera, BA
David H. Witherspoon, AB

Vice-Chancellor for
University Relations
Director of Alumni Affairs
Director of Career Counseling
and Placement
Director of Admissions
Director of Development
Director of Athletics
Chief of Security
Director of Public Relations
Director of News Bureau

STUDENT DATA

1971-1972

		<u>Page</u>
7	General Characteristics of Enrollment, 1969-70	25
8	Sex Distribution of Domestic Enrollment, 1969-70	26
9	Age Distribution of Domestic Enrollment, 1969-70	27
1	Survey of Postgraduate Enrollment by Age, 1970	28
2	Survey of Graduate and First Professional Enrollment by Age, 1970	29
3	<u>STUDENT DATA</u> Enrollment by Sex, 1968-1970	30
4	A Demographic Map of North Carolina Showing County Distribution of In-State Students, Fall, 1970	31
5	Distribution of Students by United States Geographic Area, 1968-1970	32
6	County of Origin of In-State Students, Fall, 1970	33
7	Sex Distribution of Domestic Enrollment, 1970-71	34

ENROLLMENT

<u>Table</u>		<u>Page</u>
1	General Characteristics of Enrollment, 1968-1979	25
2	Sex Distribution of Headcount Enrollment, 1926-1979	29
3	Mean Age of Headcount Enrollment, 1975-1979	30
4	Survey of Undergraduate Enrollment by Age, 1979	31
5	Survey of Graduate and First Professional Enrollment by Age, 1979	32
6	Geographic Origin of Students, 1968-1979	33
Fig. A	A Synagraphic Map of North Carolina Showing County Distribution of In-State Students, Fall 1979	34
7	Distribution of Students by United States Geographic Area, 1968-1979	35
8	County of Origin of In-State Students, Fall, 1979	36
9	Racial Composition of Headcount Enrollment, 1976-1979	37

TABLE 1
GENERAL CHARACTERISTICS OF ENROLLMENT,
1968-1979

CHARACTERISTICS	1968			1971			1974			1977			1978			1979		
	MEN	WOMEN	TOTAL	MEN	WOMEN	TOTAL	MEN	WOMEN	TOTAL	MEN	WOMEN	TOTAL	MEN	WOMEN	TOTAL	MEN	WOMEN	TOTAL
<u>UNDERGRADUATE</u>																		
<u>FULL- & PART-TIME</u>																		
<u>FULL-TIME</u>	1009	1663	2672	1183	1830	3013	1339	1907	3246	1365	2188	3553	1329	2126	3455	1347	2082	3429
<u>Σ</u>	36.8	60.6	97.4	36.7	56.6	93.2	37.3	53.1	90.4	34.0	54.6	88.6	33.9	54.2	88.1	33.5	51.9	85.5
<u>PART-TIME</u>	21	52	73	65	153	218	112	231	343	157	300	457	160	302	467	195	386	581
<u>Σ</u>	.8	1.9	2.7	2.0	4.7	6.7	3.1	6.4	9.5	3.9	7.5	11.4	4.1	7.8	11.9	4.9	9.6	14.5
<u>LEVEL OF INSTRUCTION</u>																		
<u>FRESHMEN</u>	343	523	866	428	611	1039	535	762	1297	464	799	1263	419	680	1099	564	823	1387
<u>Σ</u>	12.5	19.1	31.6	13.2	18.9	32.1	14.9	21.2	36.1	11.6	19.9	31.5	10.7	17.3	28.0	14.1	20.5	34.6
<u>SOPHOMORE</u>	333	618	951	365	556	921	342	445	787	340	545	885	321	531	852	353	537	890
<u>Σ</u>	12.1	22.5	34.6	11.3	17.2	28.5	9.5	12.4	21.9	8.5	13.6	22.1	8.2	13.5	21.7	8.8	13.4	22.2
<u>JUNIOR</u>	185	325	510	235	378	613	286	433	719	311	483	794	291	445	736	282	438	720
<u>Σ</u>	6.7	11.8	18.5	7.2	11.7	18.9	8.0	12.1	20.1	7.8	12.0	19.8	7.4	11.3	18.7	7.0	10.9	18.0
<u>SENIOR</u>	165	218	383	181	349	530	217	365	582	292	468	760	310	498	808	259	439	698
<u>Σ</u>	6.0	7.9	13.9	5.6	10.8	16.4	6.0	10.1	16.1	7.3	11.7	19.0	7.9	12.7	20.6	6.5	10.9	17.4
<u>SPECIAL</u>	4	31	35	39	89	128	71	133	204	115	193	308	148	279	427	84	231	315
<u>Σ</u>	.2	1.1	1.3	1.2	2.8	4.0	2.0	3.7	5.7	2.9	4.8	7.7	3.8	7.1	10.9	2.1	5.8	7.9

TABLE 1 (CONTINUED)
 GENERAL CHARACTERISTICS OF ENROLLMENT,
 1968-1979

CHARACTERISTICS	1968			1971			1974			1977			1978			1979		
	MEN	WOMEN	TOTAL	MEN	WOMEN	TOTAL	MEN	WOMEN	TOTAL	MEN	WOMEN	TOTAL	MEN	WOMEN	TOTAL	MEN	WOMEN	TOTAL
<u>RACE</u>																		
<u>BLACK</u>										1458	2346	3804	1394	2236	3630	1419	2243	3662
<u>%</u>										36.4	58.5	94.9	35.5	57.0	92.5	35.4	55.9	91.3
<u>WHITE</u>										58	136	194	58	171	229	90	196	286
<u>%</u>												1.4	3.4	4.8	1.5	2.2	4.9	7.1
<u>ALL OTHERS</u>										6	6	12	37	26	63	33	29	62
<u>%</u>										.1	.1	.2	.9	.7	1.6	0.8	0.7	1.5
<u>TOTAL</u>	1030	1715	2745	1248	1983	3231	1451	2138	3589	1522	2488	4010	1489	2433	3922	1542	2468	4010
<u>%</u>	33.9	56.8	90.2	33.5	53.3	86.8	33.0	48.7	81.7	31.3	51.2	82.5	30.9	50.6	81.5	31.4	50.2	81.6
<u>GRADUATE</u>																		
<u>FULL- & PART-TIME</u>																		
<u>FULL-TIME</u>			67	37	42	79	77	103	180	83	111	194	61	105	166	77	119	196
<u>%</u>			31.8	13.7	15.6	29.3	14.6	19.5	34.1	12.8	17.1	29.9	8.9	15.3	24.2	11.0	17.0	28.0
<u>PART-TIME</u>			144	82	109	191	145	204	349	146	308	454	188	332	520	156	348	504
<u>%</u>			68.2	30.4	40.7	71.1	27.4	38.6	66.0	22.5	47.5	70.0	29.4	48.4	75.8	22.3	49.7	72.0
<u>RACE</u>																		
<u>BLACK</u>										190	364	554	181	350	531	171	359	530

TABLE 1 (CONTINUED)
GENERAL CHARACTERISTICS OF ENROLLMENT,
1968-1979

CHARACTERISTICS	1968			1971			1974			1977			1978			1979		
	MEN	WOMEN	TOTAL	MEN	WOMEN	TOTAL	MEN	WOMEN	TOTAL	MEN	WOMEN	TOTAL	MEN	WOMEN	TOTAL	MEN	WOMEN	TOTAL
<u>Σ</u>										29.3	56.2	85.5	26.4	51.0	77.4	24.4	51.3	75.7
<u>WHITE</u>										38	55	93	53	84	137	51	100	151
<u>Σ</u>										5.9	8.5	14.4	7.7	12.2	19.9	7.3	14.3	21.6
<u>ALL OTHERS</u>												1		1	15	11	8	19
<u>Σ</u>										.2		.2	2.2	.4	2.6	1.6	1.1	2.7
<u>TOTAL</u>	106	105	211	119	151	270	222	309	529	229	419	648	249	437	686	233	467	700
<u>Σ</u>	3.5	3.4	6.9	3.2	4.1	7.3	5.1	6.9	12.0	4.7	8.6	13.3	5.2	9.1	14.3	4.7	9.5	14.2
<u>FIRST PROFESSIONAL</u>																		
<u>FULL- & PART-TIME</u>																		
<u>FULL-TIME</u>			79	134	34	168	219	48	267	148	47	195	151	49	200	139	66	205
<u>Σ</u>			91.9	69.8	17.8	87.6	80.2	17.6	97.8	75.1	23.9	99.0	74.8	24.2	99.0	67.1	31.9	99.0
<u>PART-TIME</u>			7	20	4	24	4	2	6	2		2	2		2	1	1	2
<u>Σ</u>	8.1	10.4	2.1	12.5	1.5	.7	2.2	1.5	.5	1.0		1.0	1.0		1.0	0.5	0.5	1.0
<u>RACE</u>																		
<u>BLACK</u>										85	37	122	85	30	115	89	42	131
<u>Σ</u>										43.1	18.8	61.9	42.1	14.9	57.0	43.0	20.3	63.3
<u>WHITE</u>										65	10	75	66	19	85	49	25	74

TABLE 1 (CONTINUED)
 GENERAL CHARACTERISTICS OF ENROLLMENT,
 1968-1979

CHARACTERISTICS	1968			1971			1974			1977			1978			1979		
	MEN	WOMEN	TOTAL	MEN	WOMEN	TOTAL	MEN	WOMEN	TOTAL	MEN	WOMEN	TOTAL	MEN	WOMEN	TOTAL	MEN	WOMEN	TOTAL
<u>Σ</u>										33.0	5.1	38.1	32.7	9.4	42.1	23.7	12.1	35.3
<u>ALL OTHERS</u>														2		2		2
<u>Σ</u>													1.0		1.0	1.0		1.0
<u>TOTAL</u>	82	4	86	154	38	192	223	50	273	150	47	197	153	49	202	140	67	207
<u>Σ</u>	2.7	.1	2.8	4.1	1.0	5.2	5.1	1.1	6.2	3.0	1.0	4.0	3.2	1.0	4.2	2.8	1.4	4.2
<u>GRAND TOTAL</u>	1218	1824	3042	1522	2201	3723	1896	2495	4391	1901	2954	4855	1891	2919	4810	1915	3002	4917
<u>Σ</u>	40.0	60.0	100	40.9	58.4	100	43.2	56.7	100	39.2	60.8	100	39.3	60.7	100	38.9	61.1	100
<u>TOTAL FTE</u>	1163.0	1741.6	2904.6	1440.1	2082.5	3522.6	1751.3	2304.6	4055.9	1747.9	2716.1	4464.0	1680.7	2594.3	4275.0	1749.0	2642.0	4391.0

TABLE 2
SEX DISTRIBUTION OF HEADCOUNT
ENROLLMENT, 1925-1979

FALL SEMESTER	MALE		FEMALE		TOTAL
	N	%	N	%	ENROLLMENT
1925	3	25	24	75	32
1930	148	28	382	72	530
1935	138	23	472	77	610
1940	245	34	475	65	720
1945	253	30	601	70	854
1950	557	44	725	56	1293
1955	576	41	823	59	1399
1960	735	40	1170	60	1955
1965	950	39	1539	61	2489
1970	1132	38	1967	62	3149
1974	1451	40	2138	60	3589
1975	1558	40	2332	60	3900
1976	1933	41	2832	59	4765
1977	1901	39	2954	61	4855
1978	1891	39	2919	61	4810
1979	1915	39	3002	61	4917

TABLE 3
 MEAN AGE OF HEADCOUNT ENROLLMENT,
 1975-1979

YEAR	UNDERGRADUATE							GRADUATE AND FIRST PROFESSIONAL						
	MEN		WOMEN		TOTAL			MEN		WOMEN		TOTAL		
	FULL-	PART-	FULL-	PART-	FULL-	PART-		FULL-	PART-	FULL-	PART-	FULL-	PART-	
	TIME	TIME	TIME	TIME	TIME	TIME	TOTAL	TIME	TIME	TIME	TIME	TIME	TIME	TOTAL
1975	22	25	20	28	21	25	21	28	30	25	31	27	31	29
1976	22	28	20	28	20	28	21	28	31	25	32	27	32	30
1977	22	27	21	27	21	27	22	28	32	27	32	28	32	30
1978	22	27	21	29	22	28	22	28	33	28	32	28	32	30
1979	22	27	23	28	22	27	23	30	32	29	33	30	33	31

TABLE 4

SURVEY OF UNDERGRADUATE ENROLLMENT BY
AGE, 1979.

AGE	IN-STATE								OUT-OF-STATE							
	MEN				WOMEN				MEN				WOMEN			
	FULL-		PART-		FULL-		PART-		FULL-		PART-		FULL-		PART-	
	TIME		TIME		TIME		TIME		TIME		TIME		TIME		TIME	
	N	%	N	%	N	%	N	%	N	%	N	%	N	%	N	%
LESS THAN 18	2	.1		.00	7	.15	1		2	.04			5	.1		.02
18	52	1.3	6	.1	91	2.3	7	.2	7	.2		.08	11	.3		.02
19	171	4.3	8	.2	305	7.6	21	.5	45	1.1		.44	1.1	3		.07
20	195	4.9	6	.1	348	8.7	25	.6	45	1.1	1	.02	50	1.2	2	.05
21	217	5.4	17	.4	36	9.2	25	.6	45	1.1			35	.9	2	.05
22	170	4.2	9	.2	245	6.1	19	.5	36	.9	2	.05	26	.6	1	.02
23	95	2.4	20	.5	139	3.5	19	.5	16	.4	2	.05	22	.5	2	.05
24	44	1.1	11	.3	54	1.3	26	.6	9	.2	1	.02	6	.1	1	.02
25-30	122	3.14	70	1.7	148	3.7	23	3.1	17	.4			12	.3	2	.05
31-35	40	.1	28	.7	77	1.9	62	1.5	5	.1			5	.1	2	.05
36-40	7	.2	6	.2	44	1.1	20	.5								
41-50	10	.2	6	.2	30	.7	16	.4								
51-64			2	.05	11	.3	5	.1								
65 AND OVER							1	.02								
UNKNOWN																
TOTAL	1125	28.05	189	4.7	1866	46.53	370	9.2	222	5.5	6	.1	216	5.4	16	.4

TABLE 5
 SURVEY OF GRADUATE AND FIRST
 PROFESSIONAL ENROLLMENT BY AGE, 1979

AGE	IN-STATE								OUT-OF-STATE							
	MEN				WOMEN				MEN				WOMEN			
	FULL-		PART-		FULL-		PART-		FULL-		PART-		FULL-		PART-	
	TIME		TIME		TIME		TIME		TIME		TIME		TIME		TIME	
	N	%	N	%	N	%	N	%	N	%	N	%	N	%	N	%
LESS THAN 18																
18																
19																
20																
21																
22	2	.2	3	.3	5	.6	3	.3	7	.8			7	.8	1	.1
23	8	.9	3	.3	8	.9	12	1.3	6	.7			3	.3	1	.1
24	11	1.2	7	.8	15	1.7	25	2.8	24	2.6			14	1.5	2	.2
25-30	81	8.9	68	7.5	75	8.6	121	13.3	24	2.6			14	1.5	2	.2
31-35	36	4.0	48	5.3	36	4.0	68	7.5	9	1.0	1	.1			1	.1
36-40	14	1.5	13	1.4	15	1.7	61	6.7	1	.1						
41-50	17	1.9	8	.9	5	.6	44	4.9								
51-64			6	.7	2	.2	8	.9								
65 AND OVER																
UNKNOWN																
TOTAL	169	20.6	156	17.2	161	18.0	342	37.7	47	5.2	1	.1	24	2.6	7	.7

TABLE 6

GEOGRAPHIC ORIGIN OF STUDENTS,
1968-1979

GEOGRAPHIC ORIGIN	1968		1971		1974		1976		1977		1978		1979	
	N	%	N	%	N	%	N	%	N	%	N	%	N	%
COUNTY OF LOCATION (DURHAM)	512	17	880	24	1096	25	1206	25	1231	25	1203	25	1289	26
ADJACENT COUNTIES	295	10	421	11	528	12	629	13	653	13	685	14	663	13
OTHER N.C. COUNTIES	1777	58	2033	55	2320	53	2453	51	2477	51	2414	50	2426	49
OUT-OF-STATE (INCLUDING FOREIGN)	458	15	389	10	447	10	477	10	494	10	508	11	539	11
TOTALS	3042	100	3723	100	4391	100	4765	100	4855	100	4810	100	4917	100

Figure A. A Synagraphic Map of North Carolina Showing County Distribution of In-State Students, Fall 1979.

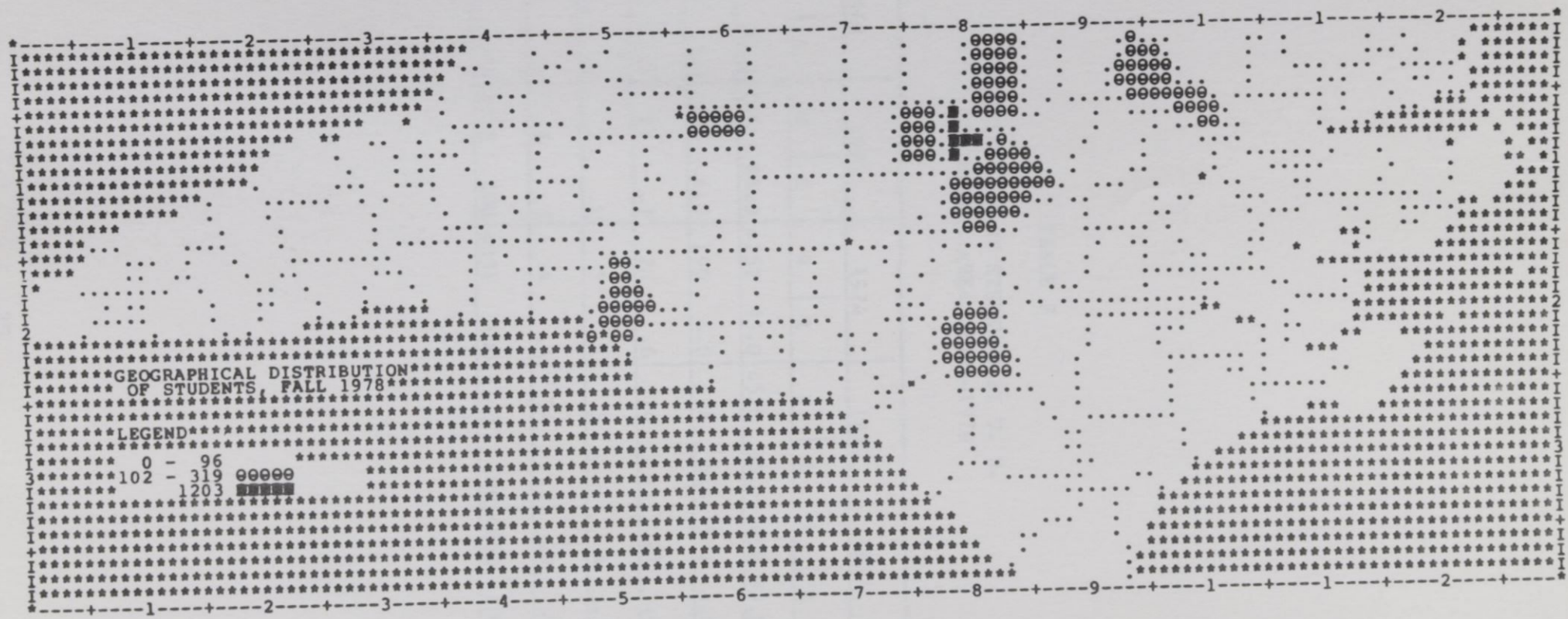


TABLE 7

DISTRIBUTION OF STUDENTS BY U. S.
GEOGRAPHIC AREA, 1968-1979

AREA	1968		1971		1974		1976		1977		1978		1979	
	N	%	N	%	N	%	N	%	N	%	N	%	N	%
SOUTH	2810	92.0	3551	95.0	4152	95.0	4528	95.0	4608	95.0	4550	95.0	4605	93.7
NORTHEAST	199	7.0	150	4.0	190	4.0	194	4.0	197	4.0	178	4.0	226	4.6
NORTHCENTRAL	21	.7	27	.7	26	.6	14	.3	17	.4	28	.6	20	0.4
WEST	5	.2	2	.1	5	.1	5	.1	4	.1	10	.2	10	0.2
FOREIGN & TERRITORIES	7	.2	13	.3	18	.4	24	.5	29	.6	44	.9	56	1.1
TOTAL	3042	100	3723	100	4391	100	4765	100	4855	100	4810	100	4917	100

TABLE 9

COUNTY OF ORIGIN OF UNDERGRADUATE, FIRST PROFESSIONAL,
AND GRADUATE STUDENTS, FALL 1979

COUNTY	NUMBER	COUNTY	NUMBER	COUNTY	NUMBER	COUNTY	NUMBER
ALAMANCE	58	CUMBERLAND	169	JOHNSTON	32	RANDOLPH	4
ALEXANDER	2	CURRITUCK	1	JONES	19	RICHMOND	37
ALLEGHANY		DARE	1	LEE	19	ROBERSON	58
ANSON	22	DAVIDSON	20	LENOIR	50	ROCKINGHAM	29
ASHE	1	DAVIE	2	LINCOLN	4	ROWAN	43
AVERY		DUPLIN	53	MCDOWELL	4	RUTHERFORD	4
BEAUFORT	27	DURHAM	1289	MACON	1	SAMPSON	53
BERTIE	19	EDGECOMBE	78	MADISON		SCOTLAND	33
BLADEN	32	FORSYTH	103	MARTIN	32	STANDLEY	9
BRUNSWICK	15	FRANKLIN	14	MECKLENBURG	112	STOKES	7
BUNCOMBE	22	GASTON	25	MITCHELL		SURRY	10
BURKE	5	GATES	7	MONTGOMERY	12	SWAIN	
CABARRUS	14	GRAHAM		MOORE	24	TRANSYLVANIA	3
CALDWELL	5	GRANVILLE	92	NASH	49	TYRELL	2
CAMDEN	3	GREENE	4	NEW-HANOVER	52	UNION	10
CARTERET	9	GUILFORD	104	NORTHAMPTON	51	VANCE	31
CASWELL	29	HALIFAX	105	ONSLOW	32	WAKE	337
CATAWBA	11	HARNETT	29	ORANGE	151	WARREN	42
CHATHAM	25	HAYWOOD	2	PAMLICO	9	WASHINGTON	13
CHEROKEE	1	HENDERSON	2	PASQUOTANK	27	WATAUGA	1
CHOWAN	14	HERTFORD	58	PENDER	19	WAYNE	109
CLAY	1	Hoke	5	PERQUIMANS	5	WILKES	7
CLEVELAND	13	HYDE	14	PERSON	79	WILSON	40
COLUMBUS	42	IREDELL	10	PITT	41	YADKIN	2
CRAVEN	34	JACKSON		POLK	2	YANCEY	1
						TOTAL	4379

TABLE 9
 RACIAL COMPOSITION OF HEADCOUNT
 ENROLLMENT, 1976-1979

YEAR	BLACK		WHITE		OTHER		TOTAL
	NUMBER	PERCENT OF TOTAL	NUMBER	PERCENT OF TOTAL	NUMBER	PERCENT OF TOTAL	
1976	4314	90.0	366	8.0	85	2.0	4765
1977	4482	92.0	360	7.0	13	.3	4855
1978	4276	89.0	451	9.0	83	2.0	4810
1979	4323	87.9	511	10.4	83	1.7	4917

ADMISSIONS

	<u>Table</u>		<u>Page</u>
	10	Number of Student Applications, Acceptances and Enrollees, Fall 1979	39
Fig.	1	First Time Freshmen, Fall 1969-1979	40
Fig.	2	Transfer Students, Fall 1969-1979	41
Fig.	3	Graduate Students, Fall 1975-1979	42
Fig.	4	First Professional Students, Fall 1975-1979	43
	11	Mean SAT Scores of Entering Freshmen, 1964-1979	44
	12	High School Class Rank of Fall New Freshmen, 1964-1979	45
	13	Undergraduate Transfers into NCCU and from NCCU, 1968-1979	46

TABLE 10
 NUMBER OF STUDENT APPLICATIONS,
 ACCEPTANCES AND ENROLLEES, FALL 1979

NEW STUDENTS	IN-STATE				OUT-OF-STATE				TOTAL
	MEN	%	WOMEN	%	MEN	%	WOMEN	%	
<u>FIRST-TIME FRESHMEN</u>									
<u>NUMBER OF APPLICANTS</u>	478		711		245		153		1539
<u>NUMBER ACCEPTED</u>	362	75	594	84	154	63	101	66	1211
<u>NUMBER ACTUALLY ENROLLED</u>	265	73	455	77	71	46	63	62	854
<u>NEW TRANSFERS</u>									
<u>UNDERGRADUATE</u>									
<u>NUMBER OF APPLICANTS</u>	127		131		41		49		347
<u>NUMBER ACCEPTED</u>	99	78	116	89	32	78	35	73	282
<u>NUMBER ACTUALLY ENROLLED</u>	74	75	81	70	24	75	28	80	207
<u>GRADUATE STUDENTS</u>									
<u>NUMBER OF APPLICANTS</u>	65		134		32		38		259
<u>NUMBER ACCEPTED</u>	49	75	112	61	21	65	34	89	215
<u>NUMBER ACTUALLY ENROLLED</u>	34	69	80	98	4	19	5	15	123
<u>FIRST PROFESSIONAL STUDENTS</u>									
<u>NUMBER OF APPLICANTS</u>	127		54		209		61		451
<u>NUMBER ACCEPTED</u>	66	52	32	59	59	28	25	41	182
<u>NUMBER ACTUALLY ENROLLED</u>	36	55	23	72	17	29	11	44	87

* Percent given is the percentage of applicants who were accepted.

** Percent given is the percentage of acceptances who enrolled.

FIG. 1 - First Time Freshmen, FALL 1969-1979

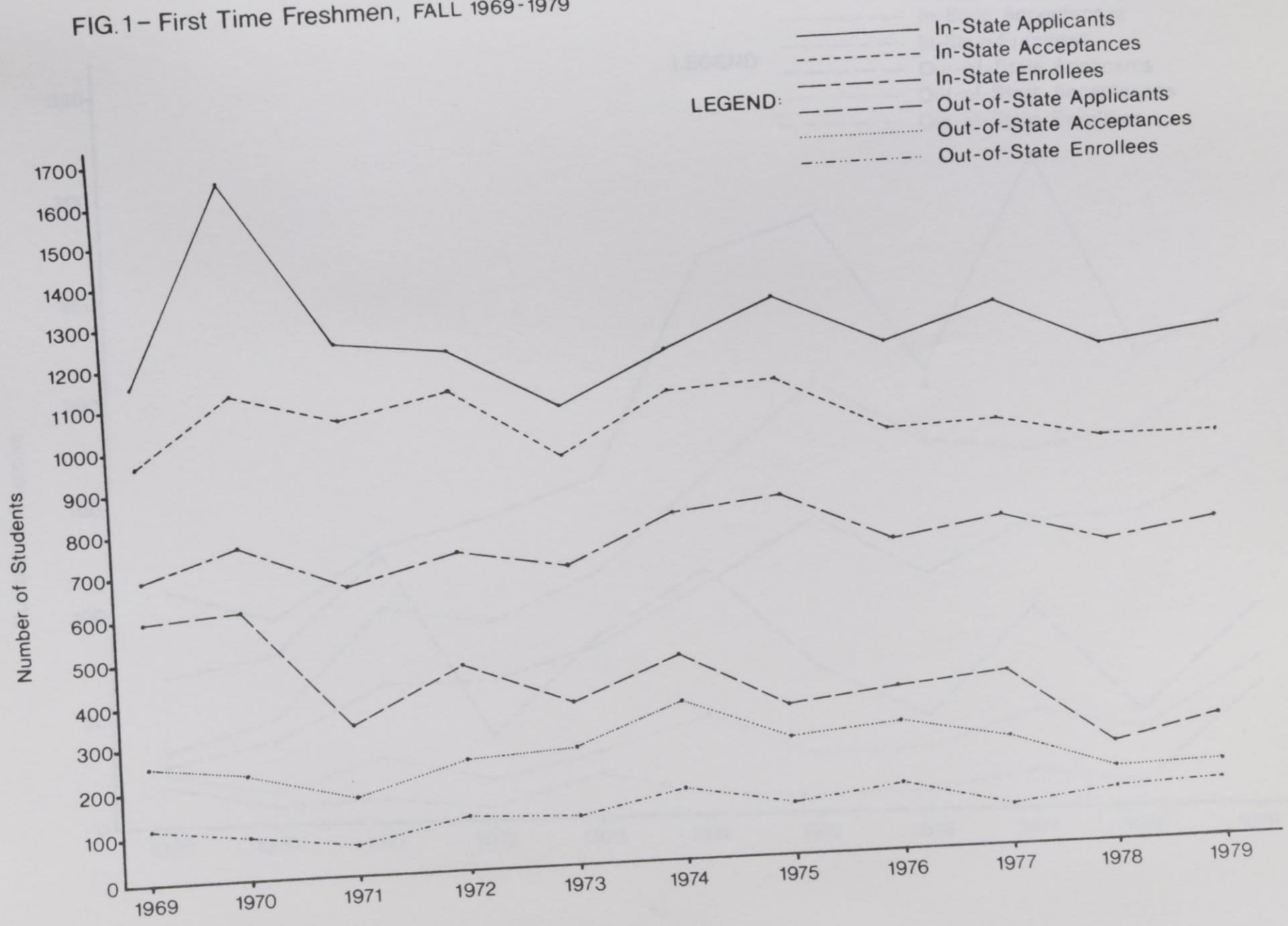


FIG. 2 - Transfer Students, FALL 1969-1979

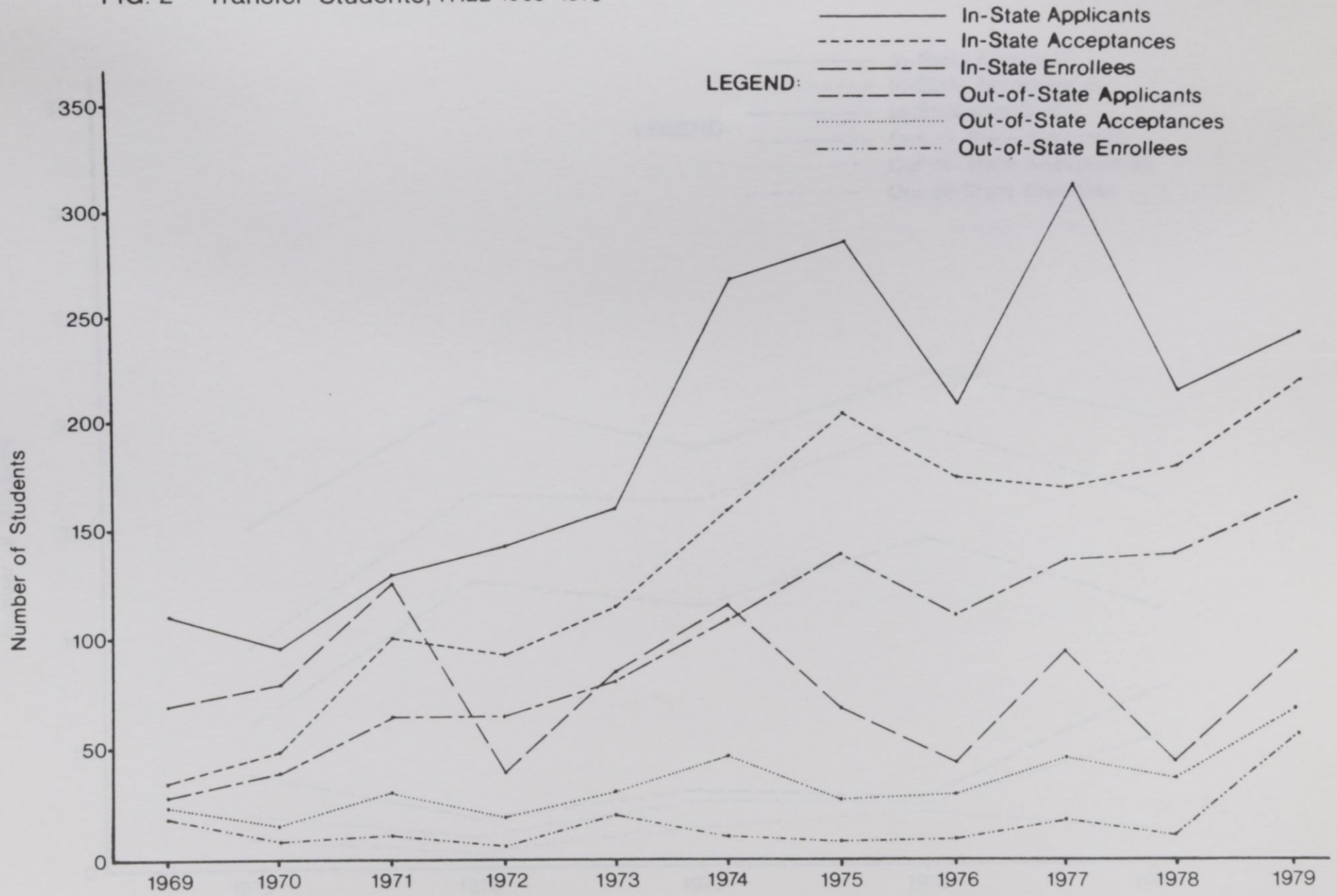


FIG. 3 - Graduate Students, FALL 1975-1979

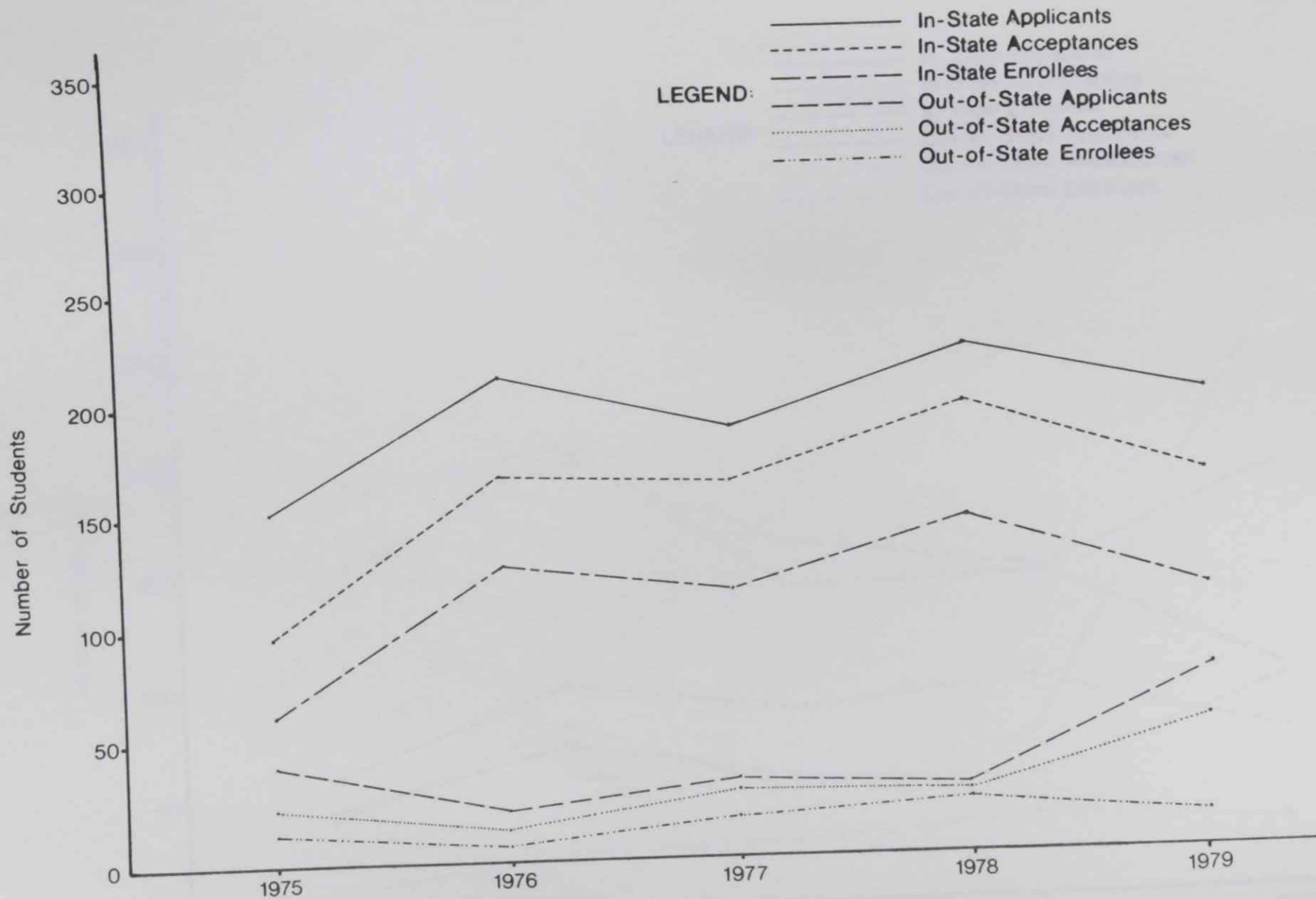


FIG. 4 - First Professional Students, FALL 1975-1979

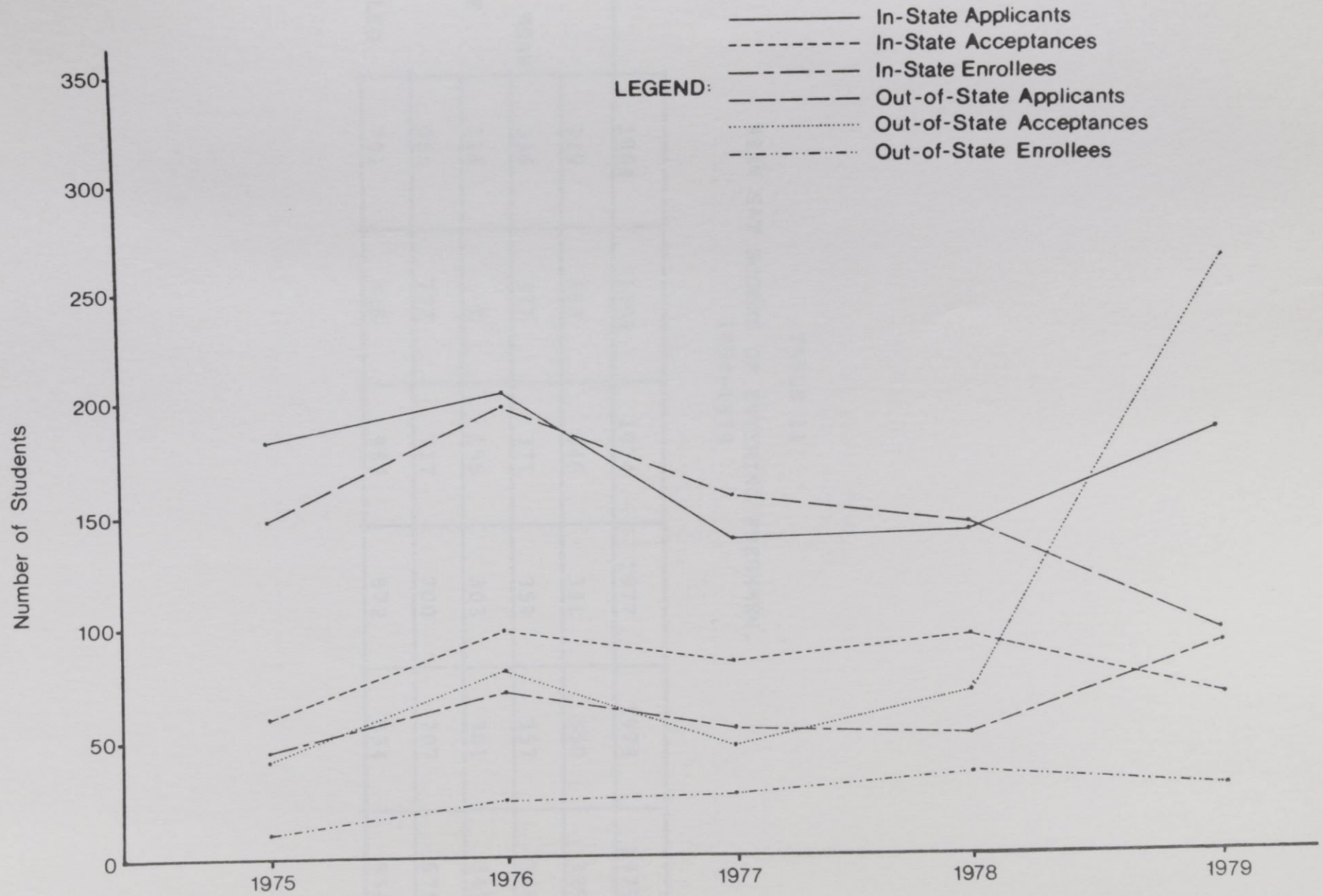


TABLE 11
 MEAN SAT SCORES OF ENTERING FRESHMEN,
 1964-1979

SAT	1964	1969	1974	1977	1978	1979
VERBAL MEAN	319	350	346	341	350	329
MATHEMATICAL MEAN	336	377	371	359	357	349
NOT AVAILABLE	118	8	155	303	301	342
TOTAL MEAN	655	727	717	700	707	678
NUMBER ENROLLED	701	816	957	872	834	854

TABLE 12
HIGH SCHOOL CLASS RANK OF FALL NEW
FRESHMEN, 1964-1979

CLASS RANK	1964		1969		CLASS RANK	1974		1975		1977		1978		1979	
	N	%	N	%		QUINTILE	N	%	N	%	N	%	N	%	N
Highest	394	61	352	43	Highest	165	17	125	15.1	138	16.9	125	15.7	98	11.5
Second	151	23	242	30	Second	225	24	232	27	235	27	204	24	197	23.1
Third	73	11	117	14	Third	197	21	173	20	210	24	211	25	211	24.7
Fourth	23	3	53	7	Fourth	137	14	120	14	115	13	130	16		
	161	18.9													
					Fifth	52	6	38	4	27	3	33	4	32	3.7
					Not			686		727		703			
Available	60	2	52	6	Available	171	18	195	20	175	20	145	17	131	16

TABLE 13
 UNDERGRADUATE TRANSFERS INTO NCCU AND
 FROM NCCU, 1968-1979

INSTITUTION	TRANSFERRED INTO NCCU						TRANSFERRED FROM NCCU					
	1968	1972	1974	1977	1978	1979	1968	1972	1974	1977	1978	1979
IN-STATE PUBLIC SENIOR COLLEGES	5	8	21	27	26	23	15	26	39	32		
IN-STATE PRIVATE SENIOR COLLEGES	1	7	7	21	16	14						
IN-STATE PUBLIC COMMUNITY COLLEGES & TECHNICAL INSTITUTES		21	1	57	61	58						
IN-STATE PRIVATE JUNIOR COLLEGES	1	14	19	17	26	17						
OUT-OF-STATE INSTITUTIONS		19	39	35	27	28						
TOTAL	7	69	87	157	156	140	15	26	39			32

DEGREES CONFERRED

<u>Table</u>		<u>Page</u>
14	Number of Bachelor's Degrees Conferred by Field of Study, 1967-1979	48
15	Number of Graduate and First Professional Degrees Conferred by Field of Study, 1967-1979	52
16	Mean NTE Scores of Education Graduates, 1972-1979	55

TABLE 14
 NUMBER OF BACHELOR'S DEGREES CONFERRED
 BY FIELD OF STUDY, 1967-1979

DISCIPLINE, DIVISION AND SPECIALTY	1967		1972		1976		1977		1978		1979	
	N	%	N	%	N	%	N	%	N	%	N	%
<u>BIOLOGICAL SCIENCES</u>												
<u>BIOLOGY, GENERAL</u>	19	5.9	24	4.1	36	5.9	30	4.8	27	4.2	33	5.2
<u>BUSINESS AND MANAGEMENT</u>												
<u>ACCOUNTING</u>	12	3.7	30	5.2	25	4.1	26	4.1	29	4.5	46	7.2
<u>BUSINESS ECONOMICS</u>	10	3.1	1	.2	7	1.1	3	.5	10	1.5	5	.9
<u>BUSINESS MANAGEMENT AND ADMINISTRATION</u>	4	1.2	50	8.6	119	19.3	119	18.9	128	19.8	128	20
<u>SECRETARIAL STUDIES</u>	5	1.6	4	.7								
<u>EDUCATION</u>												
<u>ART EDUCATION</u>			5	.9							35	5.5
<u>BUSINESS, COMMERCE & DISTRIBUTIVE EDUCATION</u>	35	10.9	59	10	28	4.6	22	3.5	35	5.4		
<u>ELEMENTARY EDUCATION, GENERAL</u>			27	4.6	64	10.4	58	11	50	9.0	71	11.1
<u>HEALTH EDUCATION</u>	24	7.5	14	2.4	8	1.3	22	3.5	12	1.9	14	2.2
<u>HOME ECONOMICS EDUCATION</u>	17	5.3	7	1.2			7	1.1				
<u>MUSIC EDUCATION</u>	3	.9	12	2.1	11	1.9						
<u>NURSERY/KINDERGARTEN EDUCATION</u>	3	.9	6	1								
<u>PHYSICAL EDUCATION</u>	18	5.6	29	5	15	2.4	15	2.4	21	3.2	11	1.7
<u>RECREATIONAL EDUCATION</u>					13	2.9	23	3.7				

TABLE 14 (CONTINUED)

NUMBER OF BACHELOR'S DEGREES CONFERRED
BY FIELD OF STUDY, 1967-1979

DISCIPLINE, DIVISION AND SPECIALTY	1967		1972		1976		1977		1978		1979	
	N	%	N	%	N	%	N	%	N	%	N	%
<u>FINE AND APPLIED ARTS</u>												
<u>ART (DRAWING, SCULPTURE)</u>	2	.6	.5	.9	15	2.4	11	1.8	1	.2	21	3.3
<u>DRAMATIC ARTS</u>			6	1	6	1	1	.2	3	.5	5	.9
<u>FINE ARTS (GENERAL)</u>												
<u>MUSIC (LIBERAL ARTS)</u>					4	.7	10	1.6	5	.8	9	1.4
<u>VISUAL COMMUNICATIONS</u>												
<u>FOREIGN LANGUAGES</u>												
<u>FRENCH</u>	20	6.2	5	.9	5	.9	1	.2	2	.3	2	.3
<u>GERMAN</u>			1	.2					1	.2	1	.2
<u>SPANISH</u>			4	.7	3	.5			2	.3	1	.2
<u>HEALTH PROFESSIONS</u>												
<u>NURSING</u>	4	1.2	13	2.2	15	2.4	41	6.5	37	5.7	30	4.7
<u>HOME ECONOMICS</u>												
<u>CLOTHING AND TEXTILES</u>			6	1.0	14	2.3	9	1.3	27	4.2	13	2.0
<u>FOODS AND NUTRITION</u>			2	.3	3	.5	1	.2	7	1.1	5	.8
<u>HOME ECONOMICS, GENERAL</u>			10	1.7	10	1.6	3	.5	4	.6	12	1.9
<u>LETTERS</u>												

TABLE 14 (CONTINUED)
 NUMBER OF BACHELOR'S DEGREES CONFERRED
 BY FIELD OF STUDY, 1967-1979

DISCIPLINE, DIVISION AND SPECIALTY	1967		1972		1976		1977		1978		1979	
	N	%	N	%	N	%	N	%	N	%	N	%
<u>ENGLISH, GENERAL</u>	27	8.4	21	3.6	17	2.8	23	3.7	8	1.2		
<u>PHILOSOPHY</u>							1	.2			15	2.4
<u>MATHEMATICS</u>							1	.2				
<u>MATHEMATICS, GENERAL</u>	12	3.7	13	2.2	3	1.5	9	1.4	3	1.2	8	1.3
<u>PHYSICAL SCIENCE</u>												
<u>CHEMISTRY</u>	6	1.9	7	1.2	9	1.5	4	.6	3	1.2	7	1.1
<u>PHYSICS</u>			2	.3					2	.3	1	.2
<u>PSYCHOLOGY</u>												
<u>PSYCHOLOGY, GENERAL</u>	13	4.1	22	3.8	25	4.1	39	6.2	31	4.8	25	3.9
<u>PUBLIC AFFAIRS AND SERVICES</u>												
<u>LAW ENFORCEMENT AND CORRECTIONS</u>					18	2.9	23	3.7	40	6.2	35	5.5
<u>PUBLIC ADMINISTRATION</u>									17	2.7	25	3.9
<u>SOCIAL SCIENCES</u>											15	2.4
<u>AFRO-AMERICAN STUDIES</u>					2	.3						
<u>HISTORY</u>	27	8.3	44	7.6	34	5.5	20	3.2	23	3.6	15	2.4
<u>GEOGRAPHY</u>	17	5.3	14	2.4	9	1.5	9	1.4	9	1.4	5	.8
<u>POLITICAL SCIENCE</u>	7	2.2	30	5.2	54	8.8	55	8.8	52	8	23	3.6

TABLE 14 (CONTINUED)

NUMBER OF BACHELOR'S DEGREES CONFERRED
BY FIELD OF STUDY, 1967-1979

DISCIPLINE, DIVISION AND SPECIALTY	1967		1972		1975		1977		1978		1979	
	N	%	N	%	N	%	N	%	N	%	N	%
<u>SOCIAL SCIENCE, GENERAL</u>	2	.6	3	.52	5	.8	4	.6				
<u>SOCIOLOGY</u>	35	10.9	106	15.2	52	6.8	31	4.9	35	5.4	22	3.4
<u>TOTAL</u>	322	100	582	100	615	100	630	100	647	100	638	100

TABLE 15
 NUMBER OF GRADUATE AND FIRST
 PROFESSIONAL DEGREES CONFERRED BY
 FIELD OF STUDY, 1967-1979

DISCIPLINE, DIVISION AND SPECIALTY	1967		1972		1976		1977		1978		1979	
	N	%	N	%	N	%	N	%	N	%	N	%
<u>BIOLOGICAL SCIENCES</u>												
<u>BIOLOGY, GENERAL</u>	5	3.7	4	3	5	1.5	3	1.2	2	.8	8	3.0
<u>BUSINESS AND MANAGEMENT</u>												
<u>BUSINESS AND COMMERCE</u>			7	5.2								
<u>BUSINESS ECONOMICS</u>												
<u>BUSINESS MANAGEMENT AND ADMINISTRATION</u>			6	4.4	18	5.6	11	4.5	18	7.4	17	6.4
<u>EDUCATION</u>												
<u>BUSINESS, COMMERCE & DISTRIBUTIVE EDUCATION</u>	13	9.7	5	3.7	4	1.2	7	2.9	6	2.5	3	1.1
<u>EDUCATION OF THE EMOTIONALLY DISTURBED</u>					1	.3	5	2.1	1	.4		
<u>EDUCATION OF THE MENTALLY RETARDED</u>			13	9.6	18	5.6	23	9.5	23	9.5	29	10.9
<u>EDUCATIONAL ADMINISTRATION</u>	3	2.2	7	5.2	20	6.2	19	7.9	7	2.9	21	7.9
<u>EDUCATIONAL MEDIA</u>			1	.7	12	3.8	11	4.5	10	4.1	8	3.0
<u>ELEMENTARY EDUCATION(GENERAL)</u>	52	39.9	8	5.9	74	4.3	20	8.3	22	9.0	30	11.3
<u>HOME ECONOMICS EDUCATION</u>	5	3.8					3	1.2				
<u>MUSIC EDUCATION</u>	3	2.2										
<u>PHYSICAL EDUCATION</u>	7	5.2	3	2.2	8	2.5	4	1.6	3	1.2	4	1.5

TABLE 15 (CONTINUED)
 NUMBER OF GRADUATE AND FIRST
 PROFESSIONAL DEGREES CONFERRED BY
 FIELD OF STUDY, 1967-1979

DISCIPLINE, DIVISION AND SPECIALTY	1967		1972		1976		1977		1978		1979	
	N	%	N	%	N	%	N	%	N	%	N	%
RECREATION EDUCATION					2	.6	2	.8				
SPECIAL EDUCATION, GENERAL												
SPEECH CORRECTION			1	.7	6	1.9	8	3.3	7	2.9	3	1.1
STUDENT PERSONNEL, GUIDANCE & COUNSELING	8	6.0	12	8.9	61	18.9	34	14.0	39	16	37	13.9
SIXTH YEAR PROGRAM	4	3.0										
FINE AND APPLIED ARTS												
MUSIC (LIBERAL ARTS)			5	3.7	5	1.5	5	2.1	1	.4	4	1.5
FOREIGN LANGUAGE												
FRENCH	1	.7	1	.7					1	.4		
HOME ECONOMICS												
HOME ECONOMICS, GENERAL			2	1.5	4	1.2			5	2.1	1	.4
LAW												
JURIS DOCTOR'S	18	13.4	33	24.4	110	34.0	43	17.8	54	22.3	54	20.4
LETTERS												
ENGLISH, GENERAL	2	1.5	2	1.5	4	1.2	4	1.6	4	1.6	2	.8
LIBRARY SCIENCE												
LIBRARY SCIENCE, GENERAL			17	12.6	16	5	22	9.0	24	9.9	30	11.3

TABLE 15 (CONTINUED)

NUMBER OF GRADUATE AND FIRST
PROFESSIONAL DEGREES CONFERRED BY
FIELD OF STUDY, 1967-1979

DISCIPLINE, DIVISION AND SPECIALTY	1967		1972		1976		1977		1978		1979	
	N	%	N	%	N	%	N	%	N	%	N	%
<u>MATHEMATICS</u>												
<u>MATHEMATICS, GENERAL</u>					1	.3	2	.8			1	.4
<u>PHYSICAL SCIENCE</u>												
<u>CHEMISTRY, GENERAL</u>	3	2.2	2	1.5	3	.9	4	1.6	2	.8	1	.4
<u>PSYCHOLOGY</u>												
<u>PSYCHOLOGY, GENERAL</u>									2	.8	5	1.9
<u>PUBLIC AFFAIRS AND SERVICES</u>												
<u>PARK AND RECREATION MANAGEMENT</u>									2	.8		
<u>SOCIAL SCIENCES</u>												
<u>HISTORY</u>	9	6.7	4	3	9	2.8	10	4.1	5	2.0	4	1.5
<u>SOCIOLOGY</u>	1	.7	2	1.5	2	.6	2	.8	4	1.6	3	1.1
<u>TOTAL</u>	134	100	135	100	323	100	242	100	242	100	265	100

TABLE 16
 MEAN NTE SCORES OF EDUCATION GRADUATES,
 1972-1979

SCORES	1972-73		1974-75		1976-77		1978-79	
	NUMBER	AVERAGE	NUMBER	AVERAGE	NUMBER	AVERAGE	NUMBER	AVERAGE
	EXAMINED	SCORE	EXAMINED	SCORE	EXAMINED	SCORE	EXAMINED	SCORE
NTE WEIGHTED COMMON EXAM SCORES	149	495	137	500	150	497	170	452
NTE COMPOSITE SCORES	149	1030	139	1031	147	1012	140	955

SCORES BELOW 950 ON THE COMPOSITE NTE,
 1972-1979

NTE SCORES	1972-73		1974-75		1976-77		1978-79	
	N	%	N	%	N	%	N	%
	COMPOSITE NTE SCORES BELOW 950	74	35.4	28	20.3	50	34.0	73

FINANCIAL AID

<u>Table</u>		<u>Page</u>
17	Scholarships, Grants and Awards, 1978-1979	57
18	Employment of Students at NCCU, 1978-1979	58
19	Student Loans, 1978-1979	59
20	Financial Aid Awards, 1978-1979	60

TABLE 17
 SCHOLARSHIPS, GRANTS AND AWARDS,
 1978-1979

FINANCIAL AID	NUMBER	TOTAL AMOUNT	AVERAGE AWARD
UNDERGRADUATE AID			
NON-ATHLETIC	339	\$748,412	\$2207.71
ATHLETIC	84	\$145,412	\$1731.10
SEOG	1323	\$571,878	\$432.26
BEOG	2681	\$2,613,548	\$974.84
HPEAA AND NURSING ASSISTANCE	0	0	0
LEEP	36	\$30,000	\$833.33
LAW SCHOOL AID			
ASSISTANCE TO PROFESSIONAL STUDENTS	66	\$42,707	\$647.08
GRADUATE SCHOOL AID	0	0	0
FELLOWSHIPS, TRAINEESHIPS, GRANTS & SCHOLARSHIPS	35	\$36,600	\$1045.71
ASSISTANTSHIPS	35	\$36,600	\$1045.71

* Abbreviations refer to the following programs:
 BEOG - Basic Educational Opportunity Grant
 HPEAA- Health Professions Education Assistance Act
 SEOG - Supplemental Education Opportunity Grant
 LEEP - Law Enforcement Education Program

TABLE 18
EMPLOYMENT OF STUDENTS AT NCCU,
1978-1979

EMPLOYMENT	NUMBER	AMOUNT	AVERAGE AWARD
UNDERGRADUATE			
COLLEGE WORK-STUDY	1,082	\$432,800	\$400.00
PACE JOBS	20	\$72,159	\$3607.95
OTHER STUDENT EMPLOYMENT	76	\$32,373	\$425.96
GRADUATE SCHOOL			
COLLEGE WORK-STUDY	38	\$18,218	\$479.42
PACE JOBS	1	\$848.00	\$848.00
OTHER STUDENT EMPLOYMENT	0	0	0
LAW SCHOOL			
COLLEGE WORK-STUDY	0	0	0
PACE JOBS	2	\$1696.00	\$848.00
OTHER STUDENT EMPLOYMENT	4	\$2992.00	\$748.00

TABLE 19
STUDENT LOANS, 1978-79

TYPES OF LOANS	NUMBER	AMOUNT	AVERAGE AWARD
UNDERGRADUATE			
NDS LOANS	579	\$327,719	\$566.01
HPEAA LOANS			
NURSING LOANS	44	\$20,882	\$474.59
GRADUATE SCHOOL			
NDS LOANS	39	\$22,075	\$566.03
LAW SCHOOL			
NDS LOANS			
OTHER STUDENT AID			
GUARANTEED LOANS	395	\$553,631	\$1401.60

*See Table 17 for explanation of abbreviations.

TABLE 20
FINANCIAL AID AWARDS, 1978-79

<u>NUMBER OF APPLICANTS</u>	5172
<u>APPLICANTS WHO ACTUALLY ENROLLED</u>	
<u>NUMBER</u>	4578
<u>PERCENT OF TOTAL STUDENTS</u>	93.1
<u>AWARDS GIVEN</u>	
<u>NUMBER</u>	7252
<u>TOTAL AMOUNT</u>	\$5,780,745
<u>MEAN AWARD</u>	\$797.12
<u>UNDUPLICATED AID STUDENTS</u>	
<u>NUMBER</u>	4473
<u>PERCENT OF TOTAL STUDENTS</u>	91.0

ALL INSTRUCTIONAL STAFF

YEAR	DESCRIPTION	PAGE
21	Instructional Staffing patterns by Department by Year, Fall 1966-1974	22
22	Relative Involvement of Instructional Staff by Department by Year, Fall 1974	23

FACULTY AND STAFF

ALL INSTRUCTIONAL FACULTY

Table

Page

21	Instructional Staffing Patterns by Department by Rank, Fall 1968-1979
22	Full-Time Equivalency of Instructional Staff by Department by Rank, Fall 1979

62

72

TABLE 21

INSTRUCTIONAL STAFFING PATTERNS BY
DEPARTMENT AND BY RANK, FALL 1968-1979

DEPARTMENT AND ACADEMIC RANK	1968	1971	1974	1976	1977	1978	1979
<u>ACADEMIC SKILLS</u>							
<u>PROFESSOR</u>					1		2
<u>ASSOCIATE PROFESSOR</u>		1					
<u>ASSISTANT PROFESSOR</u>	1			1	2	1	2
<u>INSTRUCTOR</u>	12	10	7	6	7	8	17
<u>LECTURER</u>			2	8	10	9	6
<u>TOTAL</u>	13	11	9	15	20	18	27
<u>ACCOUNTING</u>							
<u>PROFESSOR</u>							1
<u>ASSOCIATE PROFESSOR</u>						1	2
<u>ASSISTANT PROFESSOR</u>						3	4
<u>INSTRUCTOR</u>						2	2
<u>LECTURER</u>						7	9
<u>TOTAL</u>							
<u>ART</u>							
<u>PROFESSOR</u>		1	2	2	2	3	3
<u>ASSOCIATE PROFESSOR</u>	2	1	2	4	3	3	6
<u>ASSISTANT PROFESSOR</u>	4	5	2	1			
<u>INSTRUCTOR</u>			2	1	6	3	1
<u>LECTURER</u>	6	7	8	8	11	9	10
<u>TOTAL</u>							
<u>BIOLOGY</u>							

TABLE 21 (CONTINUED)

INSTRUCTIONAL STAFFING PATTERNS BY
DEPARTMENT AND BY RANK, FALL 1968-1979

DEPARTMENT AND ACADEMIC RANK	1968	1971	1974	1976	1977	1978	1979
<u>PROFESSOR</u>	3	5	4	3	3	4	3
<u>ASSOCIATE PROFESSOR</u>		2	5	5	5	8	8
<u>ASSISTANT PROFESSOR</u>	6	4	2	1	3		
<u>INSTRUCTOR</u>	7	5	2	1		1	1
<u>LECTURER</u>			2	10	4	3	5
<u>TOTAL</u>	16	16	15	20	15	16	17
<u>BUSINESS ADMINISTRATION</u>							
<u>PROFESSOR</u>						1	1
<u>ASSOCIATE PROFESSOR</u>						2	2
<u>ASSISTANT PROFESSOR</u>						3	3
<u>INSTRUCTOR</u>						2	1
<u>LECTURER</u>							
<u>TOTAL</u>						8	7
<u>BUSINESS EDUCATION</u>							
<u>PROFESSOR</u>						1	1
<u>ASSOCIATE PROFESSOR</u>						1	1
<u>ASSISTANT PROFESSOR</u>							
<u>INSTRUCTOR</u>						3	3
<u>LECTURER</u>						2	3
<u>TOTAL</u>						7	8
<u>CHEMISTRY</u>							
<u>PROFESSOR</u>	2	2		1	1	1	2
<u>ASSOCIATE PROFESSOR</u>	2	2	3	3	3	3	2

TABLE 21 (CONTINUED)

INSTRUCTIONAL STAFFING PATTERNS BY
DEPARTMENT AND BY RANK, FALL 1968-1979

DEPARTMENT AND ACADEMIC RANK	1968	1971	1974	1976	1977	1978	1979
<u>ASSISTANT PROFESSOR</u>	1	3	2	2	1	1	1
<u>INSTRUCTOR</u>							
<u>LECTURER</u>			2	2	2	2	2
<u>TOTAL</u>	5	7	7	8	7	7	7
<u>DRAMA</u>							
<u>PROFESSOR</u>							
<u>ASSOCIATE PROFESSOR</u>		1	1	1	1	1	1
<u>ASSISTANT PROFESSOR</u>	2		1	1	1	1	1
<u>INSTRUCTOR</u>	2	4	2	2	3	3	3
<u>LECTURER</u>			2	1	1		
<u>TOTAL</u>	4	5	6	5	6	5	5
<u>ECONOMICS</u>							
<u>PROFESSOR</u>							
<u>ASSOCIATE PROFESSOR</u>						2	3
<u>ASSISTANT PROFESSOR</u>						4	4
<u>INSTRUCTOR</u>							
<u>LECTURER</u>						3	2
<u>TOTAL</u>						9	9
<u>EDUCATION</u>							
<u>PROFESSOR</u>	9	11	8	8	8	6	5
<u>ASSOCIATE PROFESSOR</u>	3	11	9	3	10	9	8
<u>ASSISTANT PROFESSOR</u>	7	6	4	6	6	7	6

TABLE 21 (CONTINUED)

INSTRUCTIONAL STAFFING PATTERNS BY
DEPARTMENT AND BY RANK, FALL 1968-1979

DEPARTMENT AND ACADEMIC RANK	1968	1971	1974	1976	1977	1978	1979
<u>INSTRUCTOR</u>	2	5	2				
<u>LECTURER</u>			5	9	9	8	7
<u>TOTAL</u>	21	33	28	31	33	30	26
<u>ENGLISH</u>							
<u>PROFESSOR</u>	5	5	4	3	3	3	2
<u>ASSOCIATE PROFESSOR</u>	1	3	1	7	7	7	7
<u>ASSISTANT PROFESSOR</u>	7	6	10	5	6	6	6
<u>INSTRUCTOR</u>	18	15	5	5	3	2	1
<u>LECTURER</u>			3	3	6	6	5
<u>TOTAL</u>	31	29	26	23	25	24	21
<u>GEOGRAPHY</u>							
<u>PROFESSOR</u>	1	1					1
<u>ASSOCIATE PROFESSOR</u>			1	3	3	3	2
<u>ASSISTANT PROFESSOR</u>		2	1			1	3
<u>INSTRUCTOR</u>	4	2	1	1			
<u>LECTURER</u>			4	2	2	1	1
<u>TOTAL</u>	5	5	7	6	5	5	7
<u>HEALTH EDUCATION</u>							
<u>PROFESSOR</u>	1			1	1	1	1
<u>ASSOCIATE PROFESSOR</u>	1	2	1				
<u>ASSISTANT PROFESSOR</u>	2	1					
<u>INSTRUCTOR</u>	4	7	2	3	3	4	4
<u>LECTURER</u>			4	3	5	2	2

TABLE 21 (CONTINUED)

INSTRUCTIONAL STAFFING PATTERNS BY
DEPARTMENT AND BY RANK, FALL 1968-1979

DEPARTMENT AND ACADEMIC RANK	1968	1971	1974	1976	1977	1978	1979
<u>TOTAL</u>	8	10	7	7	9	7	7
<u>HISTORY/SOCIAL SCIENCE</u>							
<u>PROFESSOR</u>		4	2	2	2	2	3
<u>ASSOCIATE PROFESSOR</u>	3		3	3	4	4	3
<u>ASSISTANT PROFESSOR</u>		3	1	2	3	3	3
<u>INSTRUCTOR</u>	3	7	4	3	2	2	2
<u>LECTURER</u>	8		1	2	2	4	6
<u>TOTAL</u>	14	14	11	10	12	13	15
<u>HOME ECONOMICS</u>							
<u>PROFESSOR</u>	1	2	1	1		1	1
<u>ASSOCIATE PROFESSOR</u>	1	1	3	1	2	1	1
<u>ASSISTANT PROFESSOR</u>	4	4	3	3	3	3	3
<u>INSTRUCTOR</u>	2	3	1				
<u>LECTURER</u>			3	6	5	5	4
<u>TOTAL</u>	8	10	11	11	10	10	9
<u>LAW</u>							
<u>PROFESSOR</u>	4	9	13	4	4	3	4
<u>ASSOCIATE PROFESSOR</u>	2	1	6	5	5	6	4
<u>ASSISTANT PROFESSOR</u>	1	1	2	6	5	5	4
<u>INSTRUCTOR</u>			1		1	3	2
<u>LECTURER</u>	7	11	10	15	15	17	14
<u>TOTAL</u>							

TABLE 21 (CONTINUED)

INSTRUCTIONAL STAFFING PATTERNS BY
DEPARTMENT AND BY RANK, FALL 1968-1979

DEPARTMENT AND ACADEMIC RANK	1968	1971	1974	1976	1977	1978	1979
<u>LIBRARY SCIENCE</u>							
<u>PROFESSOR</u>		1				2	2
<u>ASSOCIATE PROFESSOR</u>						2	2
<u>ASSISTANT PROFESSOR</u>	2	4	3		1	4	4
<u>INSTRUCTOR</u>	1	2	2	8	6	1	
<u>LECTURER</u>			1				
<u>TOTAL</u>	3	7	6	8	7	9	3
<u>MANAGEMENT AND MARKETING</u>							
<u>PROFESSOR</u>						1	
<u>ASSOCIATE PROFESSOR</u>						2	3
<u>ASSISTANT PROFESSOR</u>						1	
<u>INSTRUCTOR</u>							1
<u>LECTURER</u>						4	4
<u>TOTAL</u>							
<u>MATHEMATICS</u>							1
<u>PROFESSOR</u>	2	2	2	2	2	2	2
<u>ASSOCIATE PROFESSOR</u>		1	1	2	2	2	3
<u>ASSISTANT PROFESSOR</u>	3	5	4	3	3	3	3
<u>INSTRUCTOR</u>	4	2	2	2	2	2	2
<u>LECTURER</u>			4	2	2	3	1
<u>TOTAL</u>	9	10	13	11	11	12	10
<u>MODERN FOREIGN LANGUAGE</u>							
<u>PROFESSOR</u>	3	3	3	4	4	4	3

TABLE 21 (CONTINUED)

INSTRUCTIONAL STAFFING PATTERNS BY
DEPARTMENT AND BY RANK, FALL 1968-1979

DEPARTMENT AND ACADEMIC RANK	1968	1971	1974	1976	1977	1978	1979
<u>ASSOCIATE PROFESSOR</u>	1	2	1	3	4	5	5
<u>ASSISTANT PROFESSOR</u>	10	10	8	7	6	6	6
<u>INSTRUCTOR</u>	6	4	2				
<u>LECTURER</u>			4	1	1	2	1
<u>TOTAL</u>	20	19	18	15	15	17	15
<u>MUSIC</u>							
<u>PROFESSOR</u>	1	2	2	2	2	2	1
<u>ASSOCIATE PROFESSOR</u>	3	3	2	3	3	3	3
<u>ASSISTANT PROFESSOR</u>	3	2	5	4	4	4	4
<u>INSTRUCTOR</u>	8	8	2	2	2	2	2
<u>LECTURER</u>			1	3	5	4	7
<u>TOTAL</u>	15	15	12	14	16	15	17
<u>NURSING</u>							
<u>PROFESSOR</u>	1	1	1	1	1	2	2
<u>ASSOCIATE PROFESSOR</u>	4	7	7	6	7	4	3
<u>ASSISTANT PROFESSOR</u>	1		2	1	1	3	2
<u>INSTRUCTOR</u>			1	6	5	6	7
<u>LECTURER</u>	6	8	11	14	14	15	14
<u>TOTAL</u>							
<u>PHILOSOPHY</u>							
<u>PROFESSOR</u>	1	1					
<u>ASSOCIATE PROFESSOR</u>			1	1	1	1	1

TABLE 21 (CONTINUED)

INSTRUCTIONAL STAFFING PATTERNS BY
DEPARTMENT AND BY RANK, FALL 1968-1979

DEPARTMENT AND ACADEMIC RANK	1968	1971	1974	1976	1977	1978	1979
<u>ASSISTANT PROFESSOR</u>		1	1	1	1	1	1
<u>INSTRUCTOR</u>	1						
<u>LECTURER</u>							
<u>TOTAL</u>	2	2	2	2	2	2	2
<u>PHYSICAL EDUCATION</u>							
<u>PROFESSOR</u>	2	2	3	2	2	2	3
<u>ASSOCIATE PROFESSOR</u>		2	2	3	3	2	1
<u>ASSISTANT PROFESSOR</u>	7	8	8	9	9	9	10
<u>INSTRUCTOR</u>	8	6	5	2	3	3	2
<u>LECTURER</u>			3	1	1		1
<u>TOTAL</u>	17	18	21	17	18	16	17
<u>PHYSICS</u>							
<u>PROFESSOR</u>		1	3	3	3	3	3
<u>ASSOCIATE PROFESSOR</u>	2	1	1		1	1	1
<u>ASSISTANT PROFESSOR</u>	1	1	1	1			
<u>INSTRUCTOR</u>	1						
<u>LECTURER</u>				4	3	3	2
<u>TOTAL</u>	3	3	5	8	7	7	6
<u>POLITICAL SCIENCE</u>							
<u>PROFESSOR</u>		1	2	2	1	1	1
<u>ASSOCIATE PROFESSOR</u>		1	1	1	2	2	2
<u>ASSISTANT PROFESSOR</u>	1	4	3	4	5	5	5
<u>INSTRUCTOR</u>	2	4	1	1			1

TABLE 21 (CONTINUED)

INSTRUCTIONAL STAFFING PATTERNS BY
DEPARTMENT AND BY RANK, FALL 1968-1979

DEPARTMENT AND ACADEMIC RANK	1968	1971	1974	1976	1977	1978	1979
<u>LECTURER</u>			1	5	10	6	1
<u>TOTAL</u>	3	10	8	13	18	14	7
<u>PSYCHOLOGY</u>							
<u>PROFESSOR</u>	2	1	1				
<u>ASSOCIATE PROFESSOR</u>		2	1	2	3	3	3
<u>ASSISTANT PROFESSOR</u>	1	1			1	1	1
<u>INSTRUCTOR</u>	4	2	2	1			2
<u>LECTURER</u>			3	4	2	2	1
<u>TOTAL</u>	7	6	7	7	6	6	7
<u>SCHOOL OF BUSINESS</u>							
<u>PROFESSOR</u>	3	3	1	3	3		3
<u>ASSOCIATE PROFESSOR</u>		3	3	2	4		
<u>ASSISTANT PROFESSOR</u>	8	9	7	8	8		8
<u>INSTRUCTOR</u>	10	10	12	11	10		10
<u>LECTURER</u>			4	16	14		
<u>TOTAL</u>	21	25	27	40	39		21
<u>SOCIOLOGY</u>							
<u>PROFESSOR</u>	5	4	2	2	1	1	1
<u>ASSOCIATE PROFESSOR</u>					1	2	3
<u>ASSISTANT PROFESSOR</u>		2	4	4	5	4	4
<u>INSTRUCTOR</u>	4	4	2	1			
<u>LECTURER</u>			2	2		4	5

TABLE 21 (CONTINUED)

INSTRUCTIONAL STAFFING PATTERNS BY
DEPARTMENT AND BY RANK, FALL 1968-1979

DEPARTMENT AND ACADEMIC RANK	1968	1971	1974	1976	1977	1978	1979
TOTAL	9	10	10	9	7	11	13
GRAND TOTAL BY ACADEMIC YEAR	253	291	285	328	329	322	329
<u>SUMMARY BY RANK AND YEAR</u>							
<u>PROFESSOR</u>	48	59	39	44	40	41	40
<u>ASSOCIATE PROFESSOR</u>	17	41	51	58	68	76	73
<u>ASSISTANT PROFESSOR</u>	75	85	79	79	83	82	88
<u>INSTRUCTOR</u>	113	105	61	53	41	40	47
<u>LECTURER</u>			55	94	96	33	81
<u>GRAND TOTAL</u>	253	291	285	328	329	322	329

* The departments of Accounting, Business Administration, Business Education, Economics, and Management and Marketing were reported as part of the School of Business.

** The data for the School of Business is divided into the following departments: Accounting, Business Administration, Business Education, Economics, and Management and Marketing.

TABLE 22

FULL-TIME EQUIVALENCY OF INSTRUCTIONAL STAFF,
BY DEPARTMENT, BY RANK,
FALL 1979

DEPARTMENT AND ACADEMIC RANK	NUMBER	NUMBER	FTF
	FULL-TIME	PART-TIME	
<u>ACADEMIC SKILLS CENTER</u>			
<u>PROFESSOR</u>			
<u>ASSOCIATE PROFESSOR</u>	2		2.00
<u>ASSISTANT PROFESSOR</u>	2		2.00
<u>INSTRUCTOR</u>	17		17.00
<u>VISITING LECTURER</u>	2	4	3.50
<u>TOTAL</u>	23	4	24.50
<u>ACCOUNTING</u>			
<u>PROFESSOR</u>	1		1.00
<u>ASSOCIATE PROFESSOR</u>			
<u>ASSISTANT PROFESSOR</u>	2		2.00
<u>INSTRUCTOR</u>	4		4.00
<u>VISITING LECTURER</u>		2	0.50
<u>TOTAL</u>	7	2	7.50
<u>ART</u>			
<u>PROFESSOR</u>			
<u>ASSOCIATE PROFESSOR</u>	3		3.00
<u>ASSISTANT PROFESSOR</u>	6		6.00
<u>INSTRUCTOR</u>			

TABLE 22 (CONTINUED)

FULL-TIME EQUIVALENCY OF INSTRUCTIONAL STAFF,
 BY DEPARTMENT, BY RANK,
 FALL 1979

DEPARTMENT AND ACADEMIC RANK	NUMBER	NUMBER	FTE
	FULL-TIME	PART-TIME	
<u>VISITING LECTURER</u>		1	0.25
<u>TOTAL</u>	9	1	9.25
<u>BIOLOGY</u>			
<u>PROFESSOR</u>	3		3.00
<u>ASSOCIATE PROFESSOR</u>	8		8.00
<u>ASSISTANT PROFESSOR</u>			
<u>INSTRUCTOR</u>	1		1.00
<u>VISITING LECTURER</u>		5	1.50
<u>TOTAL</u>	12	5	13.50
<u>BUSINESS ADMINISTRATION</u>			
<u>PROFESSOR</u>	1		1.00
<u>ASSOCIATE PROFESSOR</u>	2		2.00
<u>ASSISTANT PROFESSOR</u>	2	1	2.50
<u>INSTRUCTOR</u>	1		1.00
<u>VISITING LECTURER</u>		1	6.50
<u>TOTAL</u>	6	1	6.50
<u>BUSINESS EDUCATION</u>			
<u>PROFESSOR</u>	1		1.00
<u>ASSOCIATE PROFESSOR</u>	1		1.00
<u>ASSISTANT PROFESSOR</u>			

TABLE 22 (CONTINUED)

FULL-TIME EQUIVALENCY OF INSTRUCTIONAL STAFF,
BY DEPARTMENT, BY RANK,
FALL 1979

DEPARTMENT AND ACADEMIC RANK	NUMBER	NUMBER	FTE
	FULL-TIME	PART-TIME	
<u>INSTRUCTOR</u>	3		3.00
<u>VISITING LECTURER</u>	1	2	1.75
<u>TOTAL</u>	6	2	6.75
<u>CHEMISTRY</u>			
<u>PROFESSOR</u>	2		2.00
<u>ASSOCIATE PROFESSOR</u>	2		2.00
<u>ASSISTANT PROFESSOR</u>	1		1.00
<u>INSTRUCTOR</u>			
<u>VISITING LECTURER</u>	1	1	1.33
<u>TOTAL</u>	6	1	6.33
<u>DRAMA</u>			
<u>PROFESSOR</u>			
<u>ASSOCIATE PROFESSOR</u>	1		1.00
<u>ASSISTANT PROFESSOR</u>	1		1.00
<u>INSTRUCTOR</u>	3		3.00
<u>VISITING LECTURER</u>			
<u>TOTAL</u>	5		5.00
<u>ECONOMICS</u>			
<u>PROFESSOR</u>			

TABLE 22 (CONTINUED)
 FULL-TIME EQUIVALENCY OF INSTRUCTIONAL STAFF,
 BY DEPARTMENT, BY RANK,
 FALL 1979

DEPARTMENT AND ACADEMIC RANK	NUMBER	NUMBER	FTE
	FULL-TIME	PART-TIME	
<u>ASSOCIATE PROFESSOR</u>	2	1	2.50
<u>ASSISTANT PROFESSOR</u>	4		4.00
<u>INSTRUCTOR</u>			
<u>VISITING LECTURER</u>	2		2.00
<u>TOTAL</u>	8	1	8.50
<u>EDUCATION</u>			
<u>PROFESSOR</u>	5		5.00
<u>ASSOCIATE PROFESSOR</u>	8		8.00
<u>ASSISTANT PROFESSOR</u>	6		6.00
<u>INSTRUCTOR</u>			
<u>VISITING LECTURER</u>	3	4	5.00
<u>TOTAL</u>	22	4	24.00
<u>ENGLISH</u>			
<u>PROFESSOR</u>	2		2.00
<u>ASSOCIATE PROFESSOR</u>	7		7.00
<u>ASSISTANT PROFESSOR</u>	6		6.00
<u>INSTRUCTOR</u>	1		1.00
<u>VISITING LECTURER</u>	5		5.00
<u>TOTAL</u>	21		21.00
<u>GEOGRAPHY</u>			

TABLE 22 (CONTINUED)

FULL-TIME EQUIVALENCY OF INSTRUCTIONAL STAFF,
 BY DEPARTMENT, BY RANK,
 FALL 1979

DEPARTMENT AND ACADEMIC RANK	NUMBER	NUMBER	FTE
	FULL-TIME	PART-TIME	
<u>PROFESSOR</u>	1		1.00
<u>ASSOCIATE PROFESSOR</u>	2		2.00
<u>ASSISTANT PROFESSOR</u>	3		3.00
<u>INSTRUCTOR</u>			
<u>VISITING LECTURER</u>	1	1	0.25
<u>TOTAL</u>	6	1	6.25
<u>HEALTH EDUCATION</u>			
<u>PROFESSOR</u>	1		1.00
<u>ASSOCIATE PROFESSOR</u>			
<u>ASSISTANT PROFESSOR</u>			
<u>INSTRUCTOR</u>	4		4.00
<u>VISITING LECTURER</u>	1	1	1.25
<u>TOTAL</u>	6	1	6.25
<u>HISTORY/SOCIAL SCIENCE</u>			
<u>PROFESSOR</u>	3		3.00
<u>ASSOCIATE PROFESSOR</u>	3		3.00
<u>ASSISTANT PROFESSOR</u>	3		3.00
<u>INSTRUCTOR</u>	2		2.00
<u>VISITING LECTURER</u>	4	2	4.75

TABLE 22 (CONTINUED)
 FULL-TIME EQUIVALENCY OF INSTRUCTIONAL STAFF,
 BY DEPARTMENT, BY RANK,
 FALL 1979

DEPARTMENT AND ACADEMIC RANK	NUMBER	NUMBER	FTE
	FULL-TIME	PART-TIME	
<u>TOTAL</u>	15	2	15.75
<u>HOME ECONOMICS</u>			
<u>PROFESSOR</u>	1		1.00
<u>ASSOCIATE PROFESSOR</u>	1		1.00
<u>ASSISTANT PROFESSOR</u>	3		3.00
<u>INSTRUCTOR</u>			
<u>VISITING LECTURER</u>	3	1	3.25
<u>TOTAL</u>	8	1	8.25
<u>LAW</u>			
<u>PROFESSOR</u>	4		4.00
<u>ASSOCIATE PROFESSOR</u>	4		4.00
<u>ASSISTANT PROFESSOR</u>	4		4.00
<u>INSTRUCTOR</u>			
<u>VISITING LECTURER</u>	1	1	1.10
<u>TOTAL</u>	13	1	13.10
<u>LIBRARY SCIENCE</u>			
<u>PROFESSOR</u>	2		2.00
<u>ASSOCIATE PROFESSOR</u>	2		2.00
<u>ASSISTANT PROFESSOR</u>	4		4.00
<u>INSTRUCTOR</u>			

TABLE 22 (CONTINUED)
 FULL-TIME EQUIVALENCY OF INSTRUCTIONAL STAFF,
 BY DEPARTMENT, BY RANK,
 FALL 1979

DEPARTMENT AND ACADEMIC RANK	NUMBER	NUMBER	FTE
	FULL-TIME	PART-TIME	
<u>VISITING LECTURER</u>			
<u>TOTAL</u>	8		8.00
<u>MARKETING AND MANAGEMENT</u>			
<u>PROFESSOR</u>			
<u>ASSOCIATE PROFESSOR</u>			
<u>ASSISTANT PROFESSOR</u>	3		3.00
<u>INSTRUCTOR</u>			
<u>VISITING LECTURER</u>		1	0.25
<u>TOTAL</u>	3	1	3.25
<u>MATHEMATICS</u>			
<u>PROFESSOR</u>	1		1.00
<u>ASSOCIATE PROFESSOR</u>	3		3.00
<u>ASSISTANT PROFESSOR</u>	3		3.00
<u>INSTRUCTOR</u>	2		2.00
<u>VISITING LECTURER</u>		1	0.25
<u>TOTAL</u>	9	1	9.25
<u>MODERN FOREIGN LANGUAGE</u>			
<u>PROFESSOR</u>	3		3.00
<u>ASSOCIATE PROFESSOR</u>	5		5.00

TABLE 22 (CONTINUED)

FULL-TIME EQUIVALENCY OF INSTRUCTIONAL STAFF,
 BY DEPARTMENT, BY RANK,
 FALL 1979

DEPARTMENT AND ACADEMIC RANK	NUMBER	NUMBER	FTE
	FULL-TIME	PART-TIME	
<u>ASSISTANT PROFESSOR</u>	6		6.00
<u>INSTRUCTOR</u>			
<u>VISITING LECTURER</u>	1		1.00
<u>TOTAL</u>	15		15.00
<u>MUSIC</u>			
<u>PROFESSOR</u>	1		1.00
<u>ASSOCIATE PROFESSOR</u>	3		3.00
<u>ASSISTANT PROFESSOR</u>	4		4.00
<u>INSTRUCTOR</u>	2		2.00
<u>VISITING LECTURER</u>	4	3	5.00
<u>TOTAL</u>	14	3	15.00
<u>NURSING</u>			
<u>PROFESSOR</u>			
<u>ASSOCIATE PROFESSOR</u>	2		2.00
<u>ASSISTANT PROFESSOR</u>	3		3.00
<u>INSTRUCTOR</u>	2		2.00
<u>VISITING LECTURER</u>	2	5	3.00
<u>TOTAL</u>	9	5	10.00
<u>PHILOSOPHY</u>			
<u>PROFESSOR</u>			

TABLE 22 (CONTINUED)

FULL-TIME EQUIVALENCY OF INSTRUCTIONAL STAFF,
BY DEPARTMENT, BY RANK,
FALL 1979

DEPARTMENT AND ACADEMIC RANK	NUMBER	NUMBER	FTE
	FULL-TIME	PART-TIME	
<u>ASSOCIATE PROFESSOR</u>	1		1.00
<u>ASSISTANT PROFESSOR</u>	1		1.00
<u>INSTRUCTOR</u>			
<u>VISITING LECTURER</u>			
<u>TOTAL</u>	2		2.00
<u>PHYSICAL EDUCATION</u>			
<u>PROFESSOR</u>	3		3.00
<u>ASSOCIATE PROFESSOR</u>	1		1.00
<u>ASSISTANT PROFESSOR</u>	10		10.00
<u>INSTRUCTOR</u>	2		2.00
<u>VISITING LECTURER</u>		1	0.50
<u>TOTAL</u>	16	1	16.50
<u>PHYSICS</u>			
<u>PROFESSOR</u>	3		3.00
<u>ASSOCIATE PROFESSOR</u>	1		1.00
<u>ASSISTANT PROFESSOR</u>			
<u>INSTRUCTOR</u>			
<u>VISITING LECTURER</u>	1	1	1.33
<u>TOTAL</u>	5	1	4.33

TABLE 22 (CONTINUED)

FULL-TIME EQUIVALENCY OF INSTRUCTIONAL STAFF,
BY DEPARTMENT, BY RANK,
FALL 1979

DEPARTMENT AND ACADEMIC RANK	NUMBER	NUMBER	FTE
	FULL-TIME	PART-TIME	
<u>POLITICAL SCIENCE</u>			
<u>PROFESSOR</u>	1		1.00
<u>ASSOCIATE PROFESSOR</u>	2		2.00
<u>ASSISTANT PROFESSOR</u>	5		5.00
<u>INSTRUCTOR</u>	1		1.00
<u>VISITING LECTURER</u>	3	4	4.00
<u>TOTAL</u>	12	4	13.00
<u>PSYCHOLOGY</u>			
<u>PROFESSOR</u>			
<u>ASSOCIATE PROFESSOR</u>	3		3.00
<u>ASSISTANT PROFESSOR</u>	1		1.00
<u>INSTRUCTOR</u>	1	1	1.50
<u>VISITING LECTURER</u>		1	0.25
<u>TOTAL</u>	5	2	5.75
<u>SOCIOLOGY</u>			
<u>PROFESSOR</u>	1		1.00
<u>ASSOCIATE PROFESSOR</u>	3		3.00
<u>ASSISTANT PROFESSOR</u>	4		4.00
<u>INSTRUCTOR</u>			
<u>VISITING LECTURER</u>	2	3	2.75

TABLE 22 (CONTINUED)

FULL-TIME EQUIVALENCY OF INSTRUCTIONAL STAFF,
BY DEPARTMENT, BY RANK,
FALL 1979

DEPARTMENT AND ACADEMIC RANK	NUMBER	NUMBER	FTE
	FULL-TIME	PART-TIME	
<u>TOTAL</u>	10	3	10.75

SUMMARY OF INSTRUCTIONAL FACULTY BY
ACADEMIC RANK

ACADEMIC RANK	FULL-TIME	PART-TIME	TOTAL	FTE
PROFESSOR	40		40	40.00
%	12.2		12.2	13.5
ASSOCIATE PROFESSOR	72	1.0	73	72.50
%	21.9	0.3	22.2	24.5
ASSISTANT PROFESSOR	87	1.0	88	87.50
%	26.4	0.3	26.8	29.5
INSTRUCTOR	46	1	47	46.50
%	14.0	0.3	14.3	15.7
LECTURER	36	45	81	49.76
%	10.9	13.7	24.6	16.8
TOTAL INSTRUCTIONAL FACULTY	281	48	329	296.26
%	85.4	14.6	100.0	100.0

FULL-TIME INSTRUCTIONAL FACULTY

<u>Table</u>		<u>Page</u>
23	Highest Earned Degree by Department, Fall 1968-1979	84
24	Tenure by Department, Fall 1979	87
25	Tenure by Rank and Sex, Fall 1974-1979	89
26	Department and Academic Rank by Race and Sex, Fall 1979	90
27	Mean Salaries by Rank, 1968-1979	100
28	Mean Salaries of Professors by Race and Sex, 1974-1979	101
29	Mean Salaries of Associate Professors by Race and Sex, 1974-1979	102
30	Mean Salaries of Assistant Professors by Race and Sex, 1974-1979	103
31	Mean Salaries of Instructors by Race and Sex, 1974-1979	104
32	Summary: Mean Salaries by Rank, by Race and by Sex, Fall 1979	105
Fig. 5	Mean Salaries of Professors by Race and Sex, Fall 1979	106
Fig. 6	Mean Salaries of Associate Professors by Race and Sex, Fall 1979	107
Fig. 7	Mean Salaries of Assistant Professors by Race and Sex, Fall 1979	108
Fig. 8	Mean Salaries of Instructors by Race and Sex, Fall 1979	109

TABLE 23
HIGHEST EARNED DEGREE BY DEPARTMENT,
FALL 1968-1979

DEPARTMENT AND HIGHEST DEGREE	1968	1971	1974	1975	1976	1977	1978	1979
ACADEMIC SKILLS CENTER								
DOCTOR'S						2	1	3
MASTER'S			7	12	13	15	12	18
BACHELOR'S			2	3	2	2	2	3
ACCOUNTING								
DOCTOR'S							2	2
MASTER'S							4	4
BACHELOR'S								1
ART								
DOCTOR'S			1			2	2	2
MASTER'S	5	7	6	6	7	7	7	7
BACHELOR'S	1							
BIOLOGY								
DOCTOR'S	5	8	9	9	9	10	11	11
MASTER'S	10	8	3	4	6	5	4	1
BACHELOR'S	1							
BUSINESS ADMINISTRATION								
DOCTOR'S							6	5
MASTER'S							2	1
BACHELOR'S								
BUSINESS EDUCATION								
DOCTOR'S							2	2
MASTER'S							3	3
BACHELOR'S							1	1
CHEMISTRY								
DOCTOR'S	4	5	4	4	4	5	5	5
MASTER'S	1	2	2	2	2	1	1	1
BACHELOR'S								
DRAMA								
DOCTOR'S		1	1	1	1	1	1	1
MASTER'S	3	4	4	2	3	5	4	4
BACHELOR'S	1							
ECONOMICS								
DOCTOR'S							2	2
MASTER'S							6	6
BACHELOR'S								
EDUCATION								
DOCTOR'S	17	24	15	12	15	17	13	13
MASTER'S	7	11	7	12	11	13	11	9
BACHELOR'S				1	1			
ENGLISH								
DOCTOR'S	7	8	7	9	11	11	11	10
MASTER'S	24	21	15	18	13	15	13	11
BACHELOR'S			1					
GEOGRAPHY								

TABLE 23 (CONTINUED)

HIGHEST EARNED DEGREE BY DEPARTMENT,
FALL 1968-1979

DEPARTMENT AND HIGHEST DEGREE	1968	1971	1974	1975	1976	1977	1978	1979
DOCTOR'S	2	1	2	1	2	3	3	4
MASTER'S	3	4	2	3	3	2	2	2
BACHELOR'S								
HEALTH EDUCATION								
DOCTOR'S	2	2	1		1	1	1	1
MASTER'S	6	8	3	3	3	5	5	5
BACHELOR'S					1	2	1	
HISTORY/SOCIAL SCIENCE								
DOCTOR'S	4	4	5	4	6	6	6	6
MASTER'S	11	10	6	7	7	7	8	9
BACHELOR'S								
HOME ECONOMICS								
DOCTOR'S	2	3	4	3	3	4	4	3
MASTER'S	6	7	6	5	6	6	5	5
BACHELOR'S								
LAW								
FIRST PROFESSIONAL	7	3	11	9	11	15	15	16
LIBRARY SCIENCE								
DOCTOR'S		1			2	5	4	4
MASTER'S	3	6	6	8	4	4	5	4
BACHELOR'S								
MARKETING AND MANAGEMENT								
DOCTOR'S							1	1
MASTER'S							3	2
BACHELOR'S								
MATHEMATICS								
DOCTOR'S	2	3	4	5	5	4	5	4
MASTER'S	7	9	5	4	5	6	5	5
BACHELOR'S								
MODERN FOREIGN LANGUAGE								
DOCTOR'S	8	4	4	4	8	9	10	9
MASTER'S	13	14	11	12	8	7	7	6
BACHELOR'S		1						
MUSIC								
DOCTOR'S	4	5	4	3	5	5	5	4
MASTER'S	10	9	5	6	7	8	8	8
BACHELOR'S	1	1	2	1	1	1	1	2
NURSING								
DOCTOR'S	1				1	1	1	1
MASTER'S	5	8	8	11	12	11	11	8
BACHELOR'S			2	2	1	1	2	
PHILOSOPHY								
DOCTOR'S	1	1	1		1	1	1	1
MASTER'S	1	1						
BACHELOR'S			1	1	1	1	1	1

TABLE 23 (CONTINUED)
 HIGHEST EARNED DEGREE BY DEPARTMENT,
 FALL 1968-1979

DEPARTMENT AND HIGHEST DEGREE	1968	1971	1974	1975	1976	1977	1978	1979
PHYSICAL EDUCATION								
DOCTOR'S	3	4	4	3	5	5	4	4
MASTER'S	13	14	14	14	13	12	12	12
BACHELOR'S								
PHYSICS								
DOCTOR'S	2	3	4	3	4	6	6	5
MASTER'S	1			1	1			
BACHELOR'S								
POLITICAL SCIENCE								
DOCTOR'S		2	2	5	8	6	6	4
MASTER'S	3	6	5	4	5	10	7	8
BACHELOR'S								
PSYCHOLOGY								
DOCTOR'S	4	3	2	1	2	3	3	3
MASTER'S	4	3	2	3	1	2	2	2
BACHELOR'S								
SCHOOL OF BUSINESS								
DOCTOR'S	3	6	5	3	9	14		
MASTER'S	19	19	13	14	17	18		
BACHELOR'S			4		1	1		
SOCIOLOGY								
DOCTOR'S	6	4	2	2	2	2	2	5
MASTER'S	4	6	5	5	6	5	7	5
BACHELOR'S						1		

SUMMARY : HIGHEST EARNED DEGREE BY
 DEPARTMENT

DEGREE	1968	1971	1974	1975	1976	1977	1978	1979
DOCTOR'S	84	103	90	83	119	133	134	128
%	34.0	36.5	38.0	33.6	42.5	42.8	45.2	45.5
MASTER'S	159	177	135	156	153	169	154	146
%	64.4	62.8	57.0	63.2	54.6	54.3	52.0	52.0
BACHELOR'S	4	2	12	8	8	9	8	7
%	1.6	1.7	5.1	3.2	2.9	2.9	2.7	2.5
GRAND TOTAL	247	282	237	247	280	311	296	281
%	100.0	100.0	100.0	100.0	100.0	100.0	100.0	100.0

* Data for these years was not recorded.

** The departments of Accounting, Business Administration, Business Education, Economics, and Management and Marketing were reported as part of the School of Business.

+ The data for the School of Business is divided into the following departments: Accounting, Business Administration, Business Education, Economics, and Management and Marketing.

++ Prior to 1974 part-time faculty were included.

TABLE 24
TENURE BY DEPARTMENT, FALL 1979

DEPARTMENT	TENURED	ON	NOT ON	GRAND
		TENURE TRACK	TENURE TRACK	TOTAL
ACADEMIC SKILLS CENTER		16	7	23
% ACCOUNTING	2	30.4	69.6	100.0
% ART	28.6	2	3	7
% BIOLOGY	4	28.6	42.8	100.0
% BUSINESS ADMINISTRATION	44.4	5		9
% BUSINESS EDUCATION	5	55.6		100.0
% CHEMISTRY	41.7	7		12
% DRAMA	3	58.3		100.0
% ECONOMICS	50.0	3		6
% EDUCATION	2	50.0	2	100.0
% ENGLISH	33.3	33.3	33.3	100.0
% GEOGRAPHY	5		1	6
% HEALTH EDUCATION	83.3		16.7	100.0
% HISTORY/SOCIAL SCIENCE	1	4		5
% HOME ECONOMICS	20.0	80.0		100.0
% LIBRARY SCIENCE	2	4	2	8
% LAW	25.0	50.0	25.0	100.0
% MATHEMATICS	13	6	3	22
% MODERN FOREIGN LANGUAGE	59.1	27.3	13.6	100.0
% MUSIC	12	4	5	21
% NURSING	57.1	19.1	23.8	100.0
	3	2	1	6
	50.0	33.3	16.7	100.0
	35	5	5	15
	33.3	33.3	33.3	100.0
	4	1	3	8
	50.0	12.5	37.5	100.0
	4	7	2	13
	30.8	53.9	15.4	100.0
	3	5		8
	37.5	62.5		100.0
	1	2		3
	33.3	66.7		100.0
	7	2		9
	77.8	22.2		100.0
	12	2	1	15
	80.0	13.3	6.7	100.0
	9	1	4	14
	64.3	7.1	28.6	100.0
	3	3	3	9
	33.3	33.3	33.3	100.0

TABLE 24 (CONTINUED)

TENURE BY DEPARTMENT, FALL 1979

DEPARTMENT	ON		NOT ON	GRAND
	TENURED	TENURE TRACK	TENURE TRACK	TOTAL
PHILOSOPHY	2			2
%	100.0			100.0
PHYSICAL EDUCATION	13	3		16
%	81.3	18.8		100.0
PHYSICS	3	1	1	5
%	60.0	20.0	20.0	100.0
POLITICAL SCIENCE	4	4	4	12
%	33.3	33.3	33.3	100.0
PSYCHOLOGY	2	3		5
%	40.0	60.0		100.0
SOCIOLOGY	3	5	2	10
%	30.0	50.0	20.0	100.0
SUMMARY	130	101	50	281
%	46.3	35.9	17.8	100.0

LIBRARY 8-1

TABLE 25

TENURE BY RANK AND SEX, FALL 1974-1979

ACADEMIC RANK AND YEAR	MALES			FEMALES		
	N	WITH TENURE	% WITH TENURE	N	WITH TENURE	% WITH TENURE
1974						
PROFESSOR	24	22	91.7	9	9	100.0
ASSOCIATE PROFESSOR	32	19	59.4	18	12	66.7
ASSISTANT PROFESSOR	42	25	59.5	31	22	71.0
INSTRUCTOR	15	2	13.3	40	11	27.5
LECTURER	17			12		
TOTAL	130	68	52.3	108	54	50.0
1976						
PROFESSOR	31	23	74.2	13	11	84.6
ASSOCIATE PROFESSOR	34	19	55.9	19	15	78.9
ASSISTANT PROFESSOR	49	28	57.1	32	21	65.6
INSTRUCTOR	14	3	21.4	30	13	43.3
LECTURER	19			21		
TOTAL	147	73	49.7	115	60	52.2
1977						
PROFESSOR	31	23	74.2	11	9	81.9
ASSOCIATE PROFESSOR	41	20	48.7	24	16	66.7
ASSISTANT PROFESSOR	45	26	57.8	38	24	63.2
INSTRUCTOR	13	2	15.4	27	8	29.6
LECTURER	26			23		
TOTAL	156	71	45.5	123	57	46.3
1978						
PROFESSOR	22	17	77.2	11	11	100.
ASSOCIATE PROFESSOR	40	19	47.5	23	14	60.8
ASSISTANT PROFESSOR	41	21	51.2	27	18	66.7
INSTRUCTOR	10	2	.2	25	7	.3
LECTURER	22			21		
TOTAL	135	59	43.7	107	50	46.7
1979						
PROFESSOR	22	21	95.5	9	9	100.0
ASSOCIATE PROFESSOR	39	17	43.6	22	13	59.1
ASSISTANT PROFESSOR	46	24	52.2	24	19	79.2
INSTRUCTOR	11	2	18.2	32	7	21.9
LECTURER	13			16		
TOTAL	131	64	48.9	103	48	46.6

NOTE: DATA INCLUDED IN THIS TABLE IS FOR 9-MONTH INSTRUCTIONAL FACULTY ONLY.

TABLE 26

DEPARTMENT AND ACADEMIC RANK BY RACE
AND SEX, FALL 1979

DEPARTMENT AND ACADEMIC RANK	BLACK			WHITE			OTHER			GRAND
	MEN	WOMEN	TOTAL	MEN	WOMEN	TOTAL	MEN	WOMEN	TOTAL	TOTAL
<u>ACADEMIC SKILLS CENTER</u>										
<u>PROFESSOR</u>										
<u>ASSOCIATE PROFESSOR</u>				2		2				2
<u>ASSISTANT PROFESSOR</u>		1	1	1		1				2
<u>INSTRUCTOR</u>	2	13	15		1	1		1	1	17
<u>VISITING LECTURER</u>					2	2				2
<u>TOTAL</u>	2	14	16	3	3	6		2	2	24
<u>ACCOUNTING</u>										
<u>PROFESSOR</u>	1		1							1
<u>ASSOCIATE PROFESSOR</u>										2
<u>ASSISTANT PROFESSOR</u>		1	1	1		1				4
<u>INSTRUCTOR</u>	1	1	2	2		2				7
<u>VISITING LECTURER</u>										
<u>TOTAL</u>	2	2	4	3		3				7
<u>ART</u>										
<u>PROFESSOR</u>										
<u>ASSOCIATE PROFESSOR</u>		1	1	1		1	1		1	3
<u>ASSISTANT PROFESSOR</u>	1	2	3	1	2	3				6
<u>INSTRUCTOR</u>										
<u>VISITING LECTURER</u>										
<u>TOTAL</u>	1	3	4	2	2	4	1		1	9

UNIVERSITY OF ALABAMA

TABLE 26 (CONTINUED)

DEPARTMENT AND ACADEMIC RANK BY RACE
AND SEX, FALL 1979

DEPARTMENT AND ACADEMIC RANK	BLACK			WHITE			OTHER			GRAND
	MEN	WOMEN	TOTAL	MEN	WOMEN	TOTAL	MEN	WOMEN	TOTAL	TOTAL
<u>BIOLOGY</u>										
<u>PROFESSOR</u>	2		2		1	1				3
<u>ASSOCIATE PROFESSOR</u>	5	1	6		2	2				8
<u>ASSISTANT PROFESSOR</u>										
<u>INSTRUCTOR</u>					1	1				1
<u>VISITING LECTURER</u>										
<u>TOTAL</u>	7	1	8		4	4				12
<u>BUSINESS ADMINISTRATION</u>										
<u>PROFESSOR</u>	1		1							1
<u>ASSOCIATE PROFESSOR</u>				2		2				2
<u>ASSISTANT PROFESSOR</u>	2		2				1		1	3
<u>INSTRUCTOR</u>		1	1							1
<u>VISITING LECTURER</u>										
<u>TOTAL</u>	3	1	4	2		2	1		1	7
<u>BUSINESS EDUCATION</u>										
<u>PROFESSOR</u>										
<u>ASSOCIATE PROFESSOR</u>										
<u>ASSISTANT PROFESSOR</u>										
<u>INSTRUCTOR</u>		3	3							3
<u>VISITING LECTURER</u>		1	1							1
<u>TOTAL</u>		4	4							4
<u>CHEMISTRY</u>										

UNIVERSITY OF
 MISSISSIPPI
 LIBRARY
 84-1

TABLE 26 (CONTINUED)

DEPARTMENT AND ACADEMIC RANK BY RACE
AND SEX, FALL 1979

DEPARTMENT AND ACADEMIC RANK	BLACK			WHITE			OTHER			GRAND
	MEN	WOMEN	TOTAL	MEN	WOMEN	TOTAL	MEN	WOMEN	TOTAL	TOTAL
<u>PROFESSOR</u>	1		1	1		1				2
<u>ASSOCIATE PROFESSOR</u>				1		1	1		1	2
<u>ASSISTANT PROFESSOR</u>	1		1							1
<u>INSTRUCTOR</u>										
<u>VISITING LECTURER</u>	1		1							1
<u>TOTAL</u>	3		3	2		2	1		1	6
<u>DRAMA</u>										
<u>PROFESSOR</u>										
<u>ASSOCIATE PROFESSOR</u>				1		1				1
<u>ASSISTANT PROFESSOR</u>	1		1							1
<u>INSTRUCTOR</u>	1	1	2		1	1				3
<u>VISITING LECTURER</u>										
<u>TOTAL</u>	2	1	3	1	1	2				5
<u>ECONOMICS</u>										
<u>PROFESSOR</u>										
<u>ASSOCIATE PROFESSOR</u>				2		2				2
<u>ASSISTANT PROFESSOR</u>	1		1	3		3				4
<u>INSTRUCTOR</u>										
<u>VISITING LECTURER</u>	1		1		1	1				2
<u>TOTAL</u>	2		2	5	1	6				8
<u>EDUCATION</u>										

QUANTITATIVE RESEARCH CENTER

TABLE 26 (CONTINUED)

DEPARTMENT AND ACADEMIC RANK BY RACE
AND SEX, FALL 1979

DEPARTMENT AND ACADEMIC RANK	BLACK			WHITE			OTHER			GRAND
	MEN	WOMEN	TOTAL	MEN	WOMEN	TOTAL	MEN	WOMEN	TOTAL	TOTAL
<u>PROFESSOR</u>	1	1	2	2		2	1		1	5
<u>ASSOCIATE PROFESSOR</u>		1	1	2	5	7				8
<u>ASSISTANT PROFESSOR</u>	3	2	5		1	1				6
<u>INSTRUCTOR</u>										
<u>VISITING LECTURER</u>		2	2	1		1				3
<u>TOTAL</u>	4	6	10	5	6	11	1		1	22
<u>ENGLISH</u>										
<u>PROFESSOR</u>		1	1	1		1				2
<u>ASSOCIATE PROFESSOR</u>	1	2	3	1	3	4				7
<u>ASSISTANT PROFESSOR</u>	2	2	4	1	1	2				6
<u>INSTRUCTOR</u>		1	1							1
<u>VISITING LECTURER</u>	1	1	2	3		3				5
<u>TOTAL</u>	4	7	11	6	4	10				21
<u>GEOGRAPHY</u>										
<u>PROFESSOR</u>		1	1							1
<u>ASSOCIATE PROFESSOR</u>	1		1	1		1				2
<u>ASSISTANT PROFESSOR</u>	3		3							3
<u>INSTRUCTOR</u>										
<u>VISITING LECTURER</u>										
<u>TOTAL</u>	4	1	5	1		1				6
<u>HEALTH EDUCATION</u>										
<u>PROFESSOR</u>	1		1							1

QUOTE: Q Y H 841

TABLE 26 (CONTINUED)

DEPARTMENT AND ACADEMIC RANK BY RACE
AND SEX, FALL 1979

DEPARTMENT AND ACADEMIC RANK	BLACK			WHITE			OTHER			GRAND
	MEN	WOMEN	TOTAL	MEN	WOMEN	TOTAL	MEN	WOMEN	TOTAL	TOTAL
<u>ASSOCIATE PROFESSOR</u>										
<u>ASSISTANT PROFESOR</u>										4
<u>INSTRUCTOR</u>		3	3	1		1				1
<u>VISITING LECTURER</u>					1	1				6
<u>TOTAL</u>	2	3	4	1	1	2				
<u>HISTORY/SOCIAL SCIENCE</u>										3
<u>PROFESSOR</u>	3		3							3
<u>ASSOCIATE PROFESSOR</u>	1	1	2		1	1				3
<u>ASSISTANT PROFESSOR</u>	1	1	2	1		1				2
<u>INSTRUCTOR</u>	1	1	2							4
<u>VISITING LECTURER</u>		4	4							15
<u>TOTAL</u>	6	7	13	1	1	2				
<u>HOME ECONOMICS</u>										1
<u>PROFESSOR</u>					1	1				1
<u>ASSOCIATE PROFESSOR</u>		1	1							3
<u>ASSISTANT PROFESSOR</u>	1	2	3							
<u>INSTRUCTOR</u>								1	1	3
<u>VISITING LECTURER</u>		2	2					1	1	8
<u>TOTAL</u>	1	5	6		1	1		1	1	
<u>LAW</u>										4
<u>PROFESSOR</u>	1			1	2	1	3			

TABLE 26 (CONTINUED)

DEPARTMENT AND ACADEMIC RANK BY RACE
AND SEX, FALL 1979

DEPARTMENT AND ACADEMIC RANK	BLACK			WHITE			OTHER			GRAND
	MEN	WOMEN	TOTAL	MEN	WOMEN	TOTAL	MEN	WOMEN	TOTAL	TOTAL
<u>ASSOCIATE PROFESSOR</u>	3		3	1		1				4
<u>ASSISTANT PROFESSOR</u>	2		2	1	1	2				4
<u>INSTRUCTOR</u>										
<u>VISITING LECTURER</u>					1	1				1
<u>TOTAL</u>	6		6	4	3	7				13
<u>LIBRARY SCIENCE</u>										
<u>PROFESSOR</u>	1		1	1		1				2
<u>ASSOCIATE PROFESSOR</u>	1		1	1		1				2
<u>ASSISTANT PROFESSOR</u>		4	4							4
<u>INSTRUCTOR</u>										
<u>VISITING LECTURER</u>										
<u>TOTAL</u>	2	4	6	2		2				8
<u>MARKETING AND MANAGEMENT</u>										
<u>PROFESSOR</u>										
<u>ASSOCIATE PROFESSOR</u>							2		2	3
<u>ASSISTANT PROFESSOR</u>	1		1							
<u>INSTRUCTOR</u>										
<u>VISITING LECTURER</u>							2		2	3
<u>TOTAL</u>	1		1							
<u>MATHEMATICS</u>										1
<u>PROFESSOR</u>	1		1							1
<u>ASSOCIATE PROFESSOR</u>		1	1	2		2				3

LIBRARY 148 214

TABLE 26 (CONTINUED)

DEPARTMENT AND ACADEMIC RANK BY RACE
AND SEX, FALL 1979

DEPARTMENT AND ACADEMIC RANK	BLACK			WHITE			OTHER			GRAND
	MEN	WOMEN	TOTAL	MEN	WOMEN	TOTAL	MEN	WOMEN	TOTAL	TOTAL
<u>ASSISTANT PROFESSOR</u>	3		3							3
<u>INSTRUCTOR</u>		1	1		1	1				2
<u>VISITING LECTURER</u>										
<u>TOTAL</u>	4	2	6	2	1	3				9
<u>MODERN FOREIGN LANGUAGE</u>										
<u>PROFESSOR</u>	1		1		2	2				3
<u>ASSOCIATE PROFESSOR</u>	1		1	1	2	3		1	1	5
<u>ASSISTANT PROFESSOR</u>	1		1	2	3	5				6
<u>INSTRUCTOR</u>										
<u>VISITING LECTURER</u>					1	1				1
<u>TOTAL</u>	3		3	3	8	11		1	1	15
<u>MUSIC</u>										
<u>PROFESSOR</u>				1		1				1
<u>ASSOCIATE PROFESSOR</u>	1		1	1	1	2				3
<u>ASSISTANT PROFESSOR</u>	2	2	4							4
<u>INSTRUCTOR</u>	1	1	2							2
<u>VISITING LECTURER</u>	3		3	1		1				4
<u>TOTAL</u>	7	3	10	3	1	4				14
<u>NURSING</u>										
<u>PROFESSOR</u>										
<u>ASSOCIATE PROFESSOR</u>		2	2							2

UNIVERSITY OF TEXAS AT AUSTIN

TABLE 26 (CONTINUED)

DEPARTMENT AND ACADEMIC RANK BY RACE
AND SEX, FALL 1979

DEPARTMENT AND ACADEMIC RANK	BLACK			WHITE			OTHER			GRAND
	MEN	WOMEN	TOTAL	MEN	WOMEN	TOTAL	MEN	WOMEN	TOTAL	TOTAL
<u>ASSISTANT PROFESSOR</u>		3	3							3
<u>INSTRUCTOR</u>					2	2				2
<u>VISITING LECTURER</u>	1	1	2							2
<u>TOTAL</u>	1	6	7		2	2				9
<u>PHILOSOPHY</u>										
<u>PROFESSOR</u>										
<u>ASSOCIATE PROFESSOR</u>				1		1				1
<u>ASSISTANT PROFESSOR</u>				1		1				1
<u>INSTRUCTOR</u>										
<u>VISITING LECTURER</u>										
<u>TOTAL</u>				2		2				2
<u>PHYSICAL EDUCATION</u>										
<u>PROFESSOR</u>	3		3							3
<u>ASSOCIATE PROFESSOR</u>	1		1							1
<u>ASSISTANT PROFESSOR</u>	6	3	9		1	1				10
<u>INSTRUCTOR</u>	2		2							2
<u>VISITING LECTURER</u>										
<u>TOTAL</u>	12	3	15		1	1				16
<u>PHYSICS</u>										
<u>PROFESSOR</u>				2		2	1		1	3
<u>ASSOCIATE PROFESSOR</u>				1		1				1
<u>ASSISTANT PROFESSOR</u>										

148
 201
 841

TABLE 26 (CONTINUED)

DEPARTMENT AND ACADEMIC RANK BY RACE
AND SEX, FALL 1979

DEPARTMENT AND ACADEMIC RANK	BLACK			WHITE			OTHER			GRAND
	MEN	WOMEN	TOTAL	MEN	WOMEN	TOTAL	MEN	WOMEN	TOTAL	TOTAL
<u>INSTRUCTOR</u>										
<u>VISITING LECTURER</u>							1		1	1
<u>TOTAL</u>				3		3	2		2	5
<u>POLITICAL SCIENCE</u>										
<u>PROFESSOR</u>							1		1	1
<u>ASSOCIATE PROFESSOR</u>	1		1	1		1				2
<u>ASSISTANT PROFESSOR</u>	1		1	4		4				5
<u>INSTRUCTOR</u>	1		1							1
<u>VISITING LECTURER</u>	1	1	2				1		1	3
<u>TOTAL</u>	4	1	5	5		5	2		2	11
<u>PSYCHOLOGY</u>										
<u>PROFESSOR</u>										
<u>ASSOCIATE PROFESSOR</u>	2		2	1		1				3
<u>ASSISTANT PROFESSOR</u>		1	1							1
<u>INSTRUCTOR</u>		1	1							1
<u>VISITING LECTURER</u>										
<u>TOTAL</u>	2	2	4	1		1				5
<u>SOCIOLOGY</u>										
<u>PROFESSOR</u>	1		1							1
<u>ASSOCIATE PROFESSOR</u>	1		1	1	1	2				3
<u>ASSISTANT PROFESSOR</u>	1	2	3	1		1				4

LIBRARY

TABLE 26 (CONTINUED)

DEPARTMENT AND ACADEMIC RANK BY RACE
AND SEX, FALL 1979

DEPARTMENT AND ACADEMIC RANK	BLACK			WHITE			OTHER			GRAND
	MEN	WOMEN	TOTAL	MEN	WOMEN	TOTAL	MEN	WOMEN	TOTAL	TOTAL
<u>INSTRUCTOR</u>										
<u>VISITING LECTURER</u>	1	1	2							2
<u>TOTAL</u>	4	3	7	2	1	3				10

TABLE 27
 MEAN SALARIES BY RANK, 1968-1979

YEAR	PROFESSOR	ASSOCIATE PROFESSOR	ASSISTANT PROFESSOR	INSTRUCTOR
1968	\$13,221	\$11,208	\$8,972	\$7,474
1969	14,326	12,119	9,595	8,045
1970	15,952	13,326	10,222	8,045
1971	16,663	13,837	10,878	9,078
1972	17,588	14,321	11,248	9,698
1973	18,306	14,842	11,855	9,734
1974	19,353	16,150	13,012	10,950
1975	19,187	15,600	12,937	10,922
1976	20,777	17,069	14,073	11,928
1977	22,641	18,222	15,057	12,790
1978	24,874	19,492	16,240	13,921
1979	26,956	20,656	17,305	14,199

148 301 4 2011

TABLE 28
 MEAN SALARIES OF PROFESSORS BY RACE AND
 SEX, 1974-1979

YEAR	BLACK		WHITE		OTHER	
	MEN	WOMEN	MEN	WOMEN	MEN	WOMEN
1974	\$20,235	\$19,093	\$19,054	\$16,925	\$18,025	
1975	20,037	19,421	18,754	17,617	18,250	
1976	21,788	20,953	20,140	19,160	19,475	
1977	23,381	22,418	22,842	21,388	20,531	
1978	25,330	25,267	24,229	23,534	25,916	
1979	28,052	27,011	26,521	25,321	25,508	

QUARTERLY REPORT

TABLE 29
 MEAN SALARIES OF ASSOCIATE PROFESSORS
 BY RACE AND SEX, 1974-1979

YEAR	BLACK		WHITE		OTHER	
	MEN	WOMEN	MEN	WOMEN	MEN	WOMEN
1974	\$16,875	\$16,261	\$16,366	\$14,791	\$16,900	\$14,700
1975	16,053	16,567	15,620	14,923	16,800	14,700
1976	17,322	17,137	17,615	15,949	17,922	16,188
1977	18,528	17,974	18,748	17,314	17,918	17,240
1978	19,726	19,185	20,357	18,358	19,164	18,674
1979	21,128	20,545	21,598	19,100	19,409	20,208

UNIVERSITY OF CALIFORNIA LIBRARY

TABLE 30

MEAN SALARIES OF ASSISTANT PROFESSORS
BY RACE AND SEX, 1974-1979

YEAR	BLACK		WHITE		OTHER	
	MEN	WOMEN	MEN	WOMEN	MEN	WOMEN
1974	\$13,706	\$12,822	\$12,454	\$11,931		
1975	13,489	12,952	12,420	11,694		
1976	14,708	13,559	13,717	11,871	16,000	
1977	15,624	14,823	14,589	14,462	17,040	
1978	16,524	16,016	16,329	15,732	17,000	
1979	17,488	17,187	17,336	16,722	17,900	

148
 RY
 TA
 1979

TABLE 31
 MEAN SALARIES OF INSTRUCTORS BY RACE AND
 SEX, 1974-1979

YEAR	BLACK		WHITE		OTHER	
	MEN	WOMEN	MEN	WOMEN	MEN	WOMEN
1974	\$11,394	\$11,005	\$9,600	\$9,800		
1975	11,132	10,935	10,260	11,450		
1976	12,467	11,983	10,910	12,208		10,781
1977	12,782	12,843	12,972	11,751		13,308
1978	14,708	13,753	14,064	13,117	16,000	13,308
1979	14,674	13,992	15,883	14,020		11,550

148
 RY
 A
 P
 T
 O

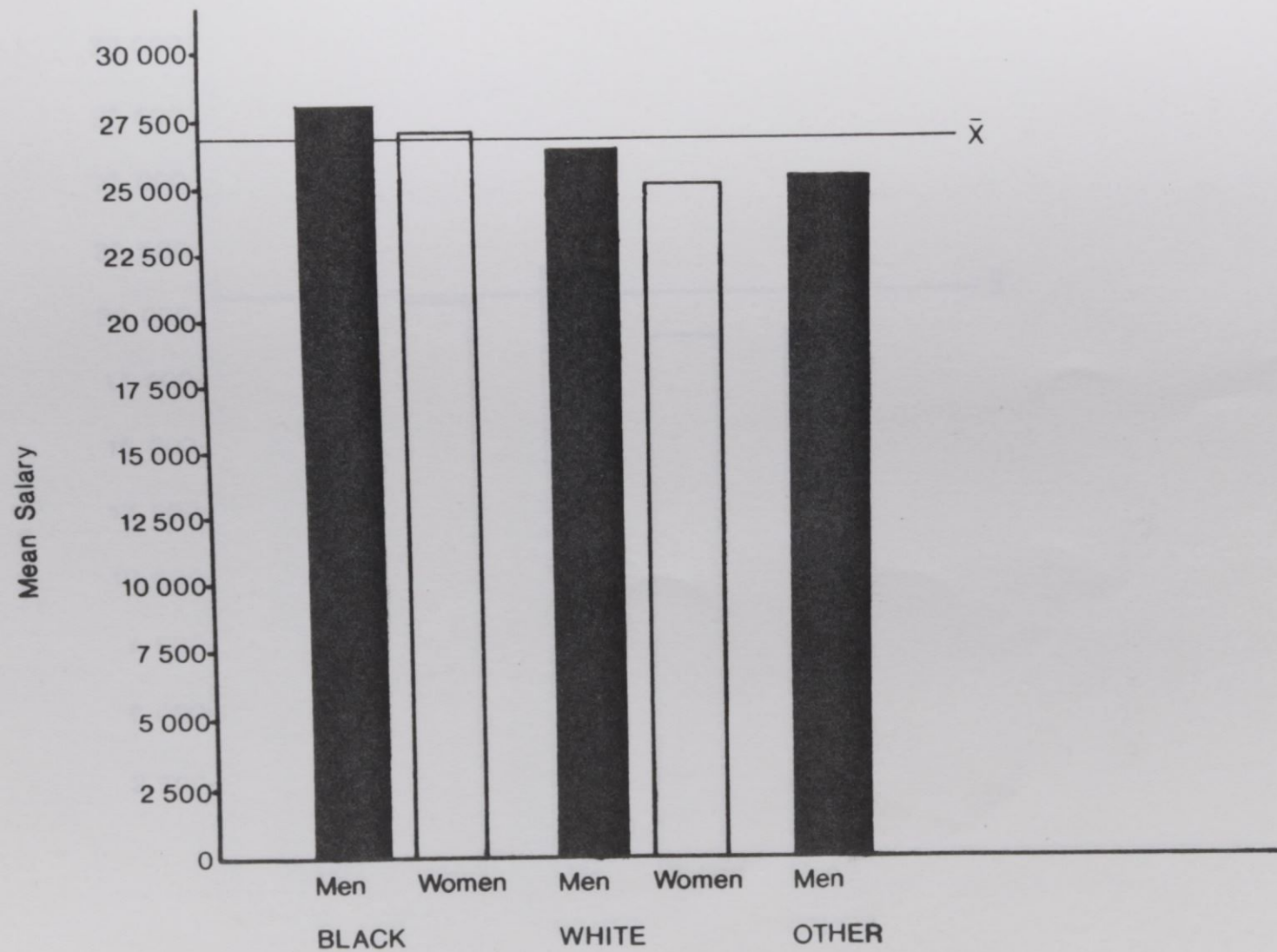
TABLE 32

SUMMARY: MEAN SALARIES BY RANK, BY RACE
AND BY SEX, FALL 1979

ACADEMIC RANK	BLACK				WHITE				OTHER			
	MEN		WOMEN		MEN		WOMEN		MEN		WOMEN	
	N	MEAN	N	MEAN	N	MEAN	N	MEAN	N	MEAN	N	MEAN
PROFESSOR	15	\$28,052	3	\$27,011	9	\$26,521	6	\$25,321	2	\$25,508		
ASSOCIATE PROFESSOR	17	21,128	8	20,545	22	21,598	16	19,100	2	19,409	1	
ASSISTANT PROFESSOR	31	17,488	23	17,187	17	17,336	8	16,722	2	17,900		
INSTRUCTOR	9	14,674	27	13,992	3	15,883	6	14,020			1	

* Salaries have been omitted from cells with only one person.

FIG. 5 - Professors, FALL 1979



Handwritten blue text at the bottom of the page, possibly a library stamp or reference code, including characters like "14", "8", "T", "U", "A", "T".

FIG. 6 - Associate Professors, FALL 1979

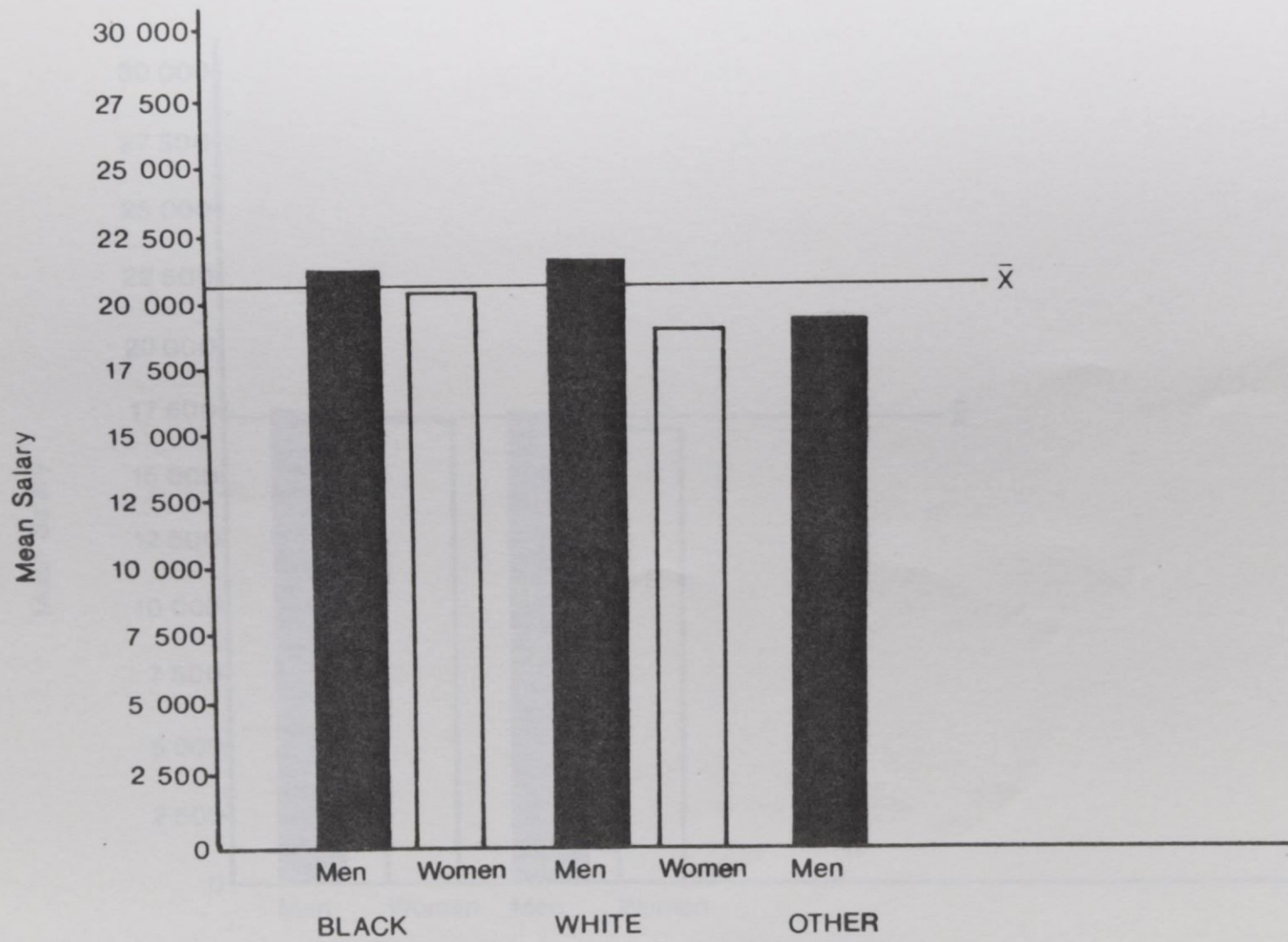


FIG. 7 - Assistant Professors, FALL 1979

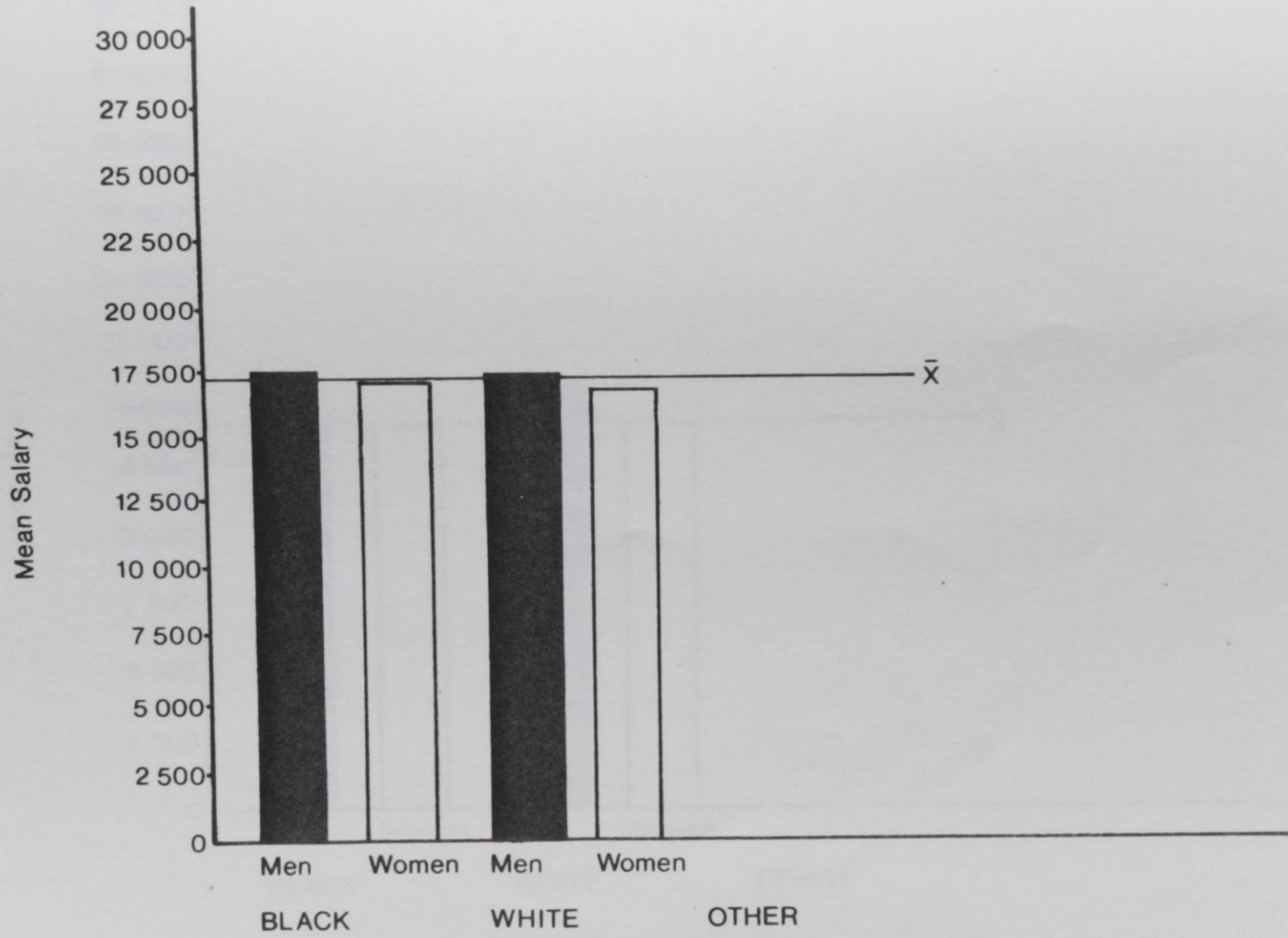
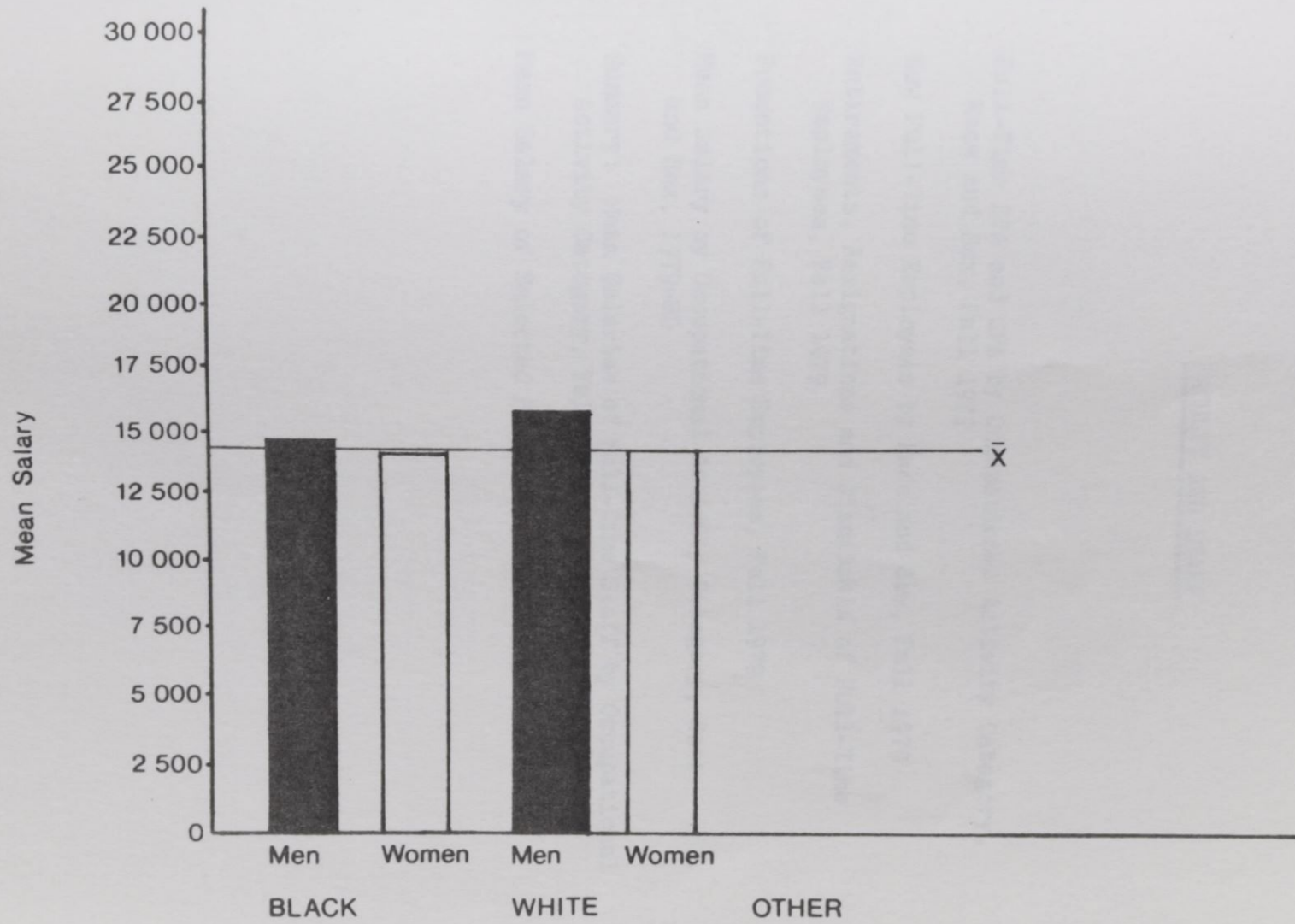


FIG. 8 - Instructors, FALL 1979



Library of Congress

FACULTY AND STAFF

<u>Table</u>		<u>Page</u>
33	Full-Time EPA and SPA by Occupational Activity Category, Race and Sex, Fall 1979	111
34	New Full-Time Employees by Race and Sex, Fall 1979	112
35	Retirements, Resignations and Dismissals of Full-Time Employees, Fall 1979	113
36	Promotions of Full-Time Employees, Fall 1979	114
37	Mean Salary by Occupational Activity Category, Race and Sex, 1979-80	115
38	Summary: Mean Salaries of Full-Time Staff by Occupational Activity Category, Fall 1979	116
39	Mean Salary of Selected Positions, Fall 1979	117

UNIVERSITY OF
TAMU
LIBRARY
SERIALS
148
T

TABLE 33

FULL-TIME EPA AND SPA BY OCCUPATIONAL
ACTIVITY CATEGORY, RACE AND SEX,
FALL 1979

OCCUPATIONAL ACTIVITY CATEGORY	BLACK		WHITE		OTHER		TOTAL	
	MEN	WOMEN	MEN	WOMEN	MEN	WOMEN	MEN	WOMEN
EXECUTIVE, ADMINISTRATIVE & MANAGERIAL	28	10	3	1	1		32	11
NUMBER OF PERSONS ABOVE WITH ACADEMIC RANK	16	7	2		1		19	7
NUMBER OF PERSONS ABOVE WITH TENURE	10	5	2		1		13	5
INSTRUCTIONAL FACULTY (TENURED)	45	30	29	22	3	1	77	53
PROFESSORS	16	3	8	6	2		26	9
ASSOCIATE PROFESSORS	8	4	11	10	1	1	20	15
ASSISTANT PROFESSORS	19	17	10	5			29	22
INSTRUCTORS	2	6		1			2	7
LECTURERS								
INSTRUCTIONAL FACULTY (NON TENURED BUT ON TRACK)	20	18	13	7	2		35	25
PROFESSORS	2		1		1		4	
ASSOCIATE PROFESSORS	7	4	7	3	1		15	7
ASSISTANT PROFESSORS	7	5	4	2			11	7
INSTRUCTORS	4	9	1	2			5	11
LECTURERS								
INSTRUCTIONAL FACULTY (NOT ON TENURE TRACK)	1	3					1	3
PROFESSORS								
ASSOCIATE PROFESSORS								
ASSISTANT PROFESSORS								
INSTRUCTORS	1	2					1	2
LECTURERS		1						1
TEACHING & RESEARCH ASSISTANTS								
PROFESSIONAL	19	27	2	4		3	21	34
SECRETARIAL & CLERICAL	18	166		1			18	167
TECHNICAL & PARAPROFESSIONAL	23	29		1			23	30
SKILLED CRAFTS	34	5	2				36	5
SERVICE & MAINTENANCE	70	39	1	2			71	41
TOTAL	258	327	50	38	6	4	314	369

UNIVERSITY OF
 TEXAS AT
 AUSTIN

TABLE 34

NEW FULL-TIME EMPLOYEES BY RACE AND SEX,
FALL 1979

OCCUPATIONAL ACTIVITY CATEGORY	BLACK		WHITE		OTHER		TOTAL	
	MEN	WOMEN	MEN	WOMEN	MEN	WOMEN	MEN	WOMEN
EXECUTIVE, ADMINISTRATIVE & MANAGERIAL NUMBER OF PERSONS ABOVE WITH ACADEMIC RANK	1						1	
NUMBER OF PERSONS ABOVE WITH TENURE								
INSTRUCTIONAL FACULTY (TENURED) PROFESSORS	1						1	
ASSOCIATE PROFESSORS								
ASSISTANT PROFESSORS								
INSTRUCTORS								
LECTURERS								
INSTRUCTIONAL FACULTY (NON-TENURED BUT ON TRACK) PROFESSORS	11	3	1	7	1	2	13	12
ASSOCIATE PROFESSORS	6	2	1	1	1		8	3
ASSISTANT PROFESSORS	3			2			3	2
INSTRUCTORS	2	1		4		2	2	7
LECTURERS								
INSTRUCTIONAL FACULTY (NOT ON TENURE TRACK) PROFESSORS								
ASSOCIATE PROFESSORS								
ASSISTANT PROFESSORS								
INSTRUCTORS								
LECTURERS								
TEACHING & RESEARCH ASSISTANTS PROFESSIONAL				1		1		2
SECRETARIAL & CLERICAL	9	22		1			9	23
TECHNICAL & PARAPROFESSIONAL	3	5					3	5
SKILLED CRAFTS	3					1	4	
SERVICE & MAINTENANCE	15	6					15	6
TOTAL	42	36	1	9	2	3	45	48

UNIVERSITY OF
 TEXAS
 LIBRARY
 148-1

TABLE 35

 RETIREMENTS, RESIGNATIONS AND DISMISSALS
 OF FULL-TIME EMPLOYEES, FALL 1979

OCCUPATIONAL ACTIVITY CATEGORY	BLACK		WHITE		OTHER		TOTAL	
	MEN	WOMEN	MEN	WOMEN	MEN	WOMEN	MEN	WOMEN
EXECUTIVE, ADMINISTRATIVE & MANAGERIAL	1						1	
NUMBER OF PERSONS ABOVE WITH ACADEMIC RANK	1						1	
NUMBER OF PERSONS ABOVE WITH TENURE	1						1	
INSTRUCTIONAL FACULTY (TENURED)	4	2	2		1		7	2
PROFESSOR	2	2	1		1		4	2
ASSOCIATE PROFESSOR	2						2	
ASSISTANT PROFESSOR			1				1	
INSTRUCTOR								
LECTURER								
INSTRUCTIONAL FACULTY (NON-TENURED BUT ON TRACK)	3	3	1	1	1		5	4
PROFESSORS								
ASSOCIATE PROFESSORS	2	1	1	1	1		4	2
ASSISTANT PROFESSORS	1						1	
INSTRUCTORS		2						2
LECTURERS								
INSTRUCTIONAL FACULTY (NOT ON TENURE TRACK)						1		1
PROFESSORS								
ASSOCIATE PROFESSORS								
ASSISTANT PROFESSORS						1		1
INSTRUCTORS								
LECTURERS								
TEACHING & RESEARCH ASSISTANTS								
PROFESSIONAL	1	2	1		1		3	2
SECRETARIAL & CLERICAL								
TECHNICAL & PARAPROFESSIONAL								
SKILLED CRAFTS								
SERVICE & MAINTENANCE								
TOTAL	9	7	4	1	3	1	16	9

 UNIVERSITY OF
 ALABAMA
 148
 T

TABLE 36

PROMOTIONS OF FULL-TIME EMPLOYEES,
FALL 1979

OCCUPATIONAL ACTIVITY CATEGORY	BLACK		WHITE		OTHER		TOTAL	
	MEN	WOMEN	MEN	WOMEN	MEN	WOMEN	MEN	WOMEN
EXECUTIVE, ADMINISTRATIVE & MANAGERIAL	1						1	
NUMBER OF PERSONS ABOVE WITH ACADEMIC RANK								
NUMBER OF PERSONS ABOVE WITH TENURE								
INSTRUCTIONAL FACULTY (TENURED)	3		1	1			4	1
PROFESSORS	3		1	1			4	1
ASSOCIATE PROFESSORS								
ASSISTANT PROFESSORS								
INSTRUCTORS								
LECTURERS								
INSTRUCTIONAL FACULTY (NON-TENURED BUT ON TRACK)								
PROFESSORS								
ASSOCIATE PROFESSORS		1	1				1	1
ASSISTANT PROFESSORS								
INSTRUCTORS								
LECTURERS								
INSTRUCTIONAL FACULTY (NOT ON TENURE TRACK)								
PROFESSORS								
ASSOCIATE PROFESSORS								
ASSISTANT PROFESSORS								
INSTRUCTORS								
LECTURERS								
TEACHING & RESEARCH ASSISTANTS	1	3					1	3
PROFESSIONAL								
SECRETARIAL & CLERICAL								
TECHNICAL & PARAPROFESSIONAL								
SKILLED CRAFTS								
SERVICE & MAINTENANCE	4		1	1			5	1
TOTAL								

UNIVERSITY OF
 ALABAMA
 LIBRARY
 148 T

TABLE 37

MEAN SALARY BY OCCUPATIONAL ACTIVITY
CATEGORY, RACE AND SEX, 1978-1979

OCCUPATIONAL ACTIVITY CATEGORY	BLACK				WHITE				OTHER			
	MEN		WOMEN		MEN		WOMEN		MEN		WOMEN	
	N	MEAN	N	MEAN	N	MEAN	N	MEAN	N	MEAN	N	MEAN
EXECUTIVE, ADMINISTRATIVE & MANAGERIAL	11	\$22,587	3	\$21,112	1		1					
PROFESSIONAL	13	17,709	21	15,121	1		2	12,648			3	12,972
TECHNICAL & PARAPROFESSIONAL	23	11,674	29	11,200			1					
CLERICAL & SECRETARIAL	18	8,884	167	10,090			1					
SKILLED CRAFTS	35	11,745	5	10,946	2	11,556						
SERVICES & MAINTENANCE	74	7,551	42	7,159	1		1					

* Salaries have been omitted from cells with only one person.

UNIVERSITY OF
 CALIFORNIA
 LIBRARY

TABLE 38

SUMMARY: MEAN SALARIES OF FULL-TIME
STAFF BY OCCUPATIONAL ACTIVITY
CATEGORY, FALL 1979

OCCUPATIONAL ACTIVITY CATEGORY	NUMBER	MEAN
EXECUTIVE, ADMINISTRATIVE & MANAGERIAL	15	\$21,995
PROFESSIONAL	39	15,692
TECHNICAL & PARAPROFESSIONALS	53	11,352
CLERICAL & SECRETARIAL	135	9,952
SKILLED CRAFTS	42	11,641
SERVICES & MAINTENANCE	119	7,414

UNIVERSITY
 OF
 CALIFORNIA
 LIBRARY

TABLE 39
 MEAN SALARY OF SELECTED POSITIONS,
 FALL 1979

OCCUPATIONAL ACTIVITY CATEGORY	NUMBER	MEAN SALARY
EXECUTIVE OFFICERS	6	\$36,239
DEANS	5	36,893
DIRECTORS	29	23,087
CHAIRPERSONS	23	26,882

LIBRARY
 148 T

1978

1979

44	Revenue, Expenditure and Budget for 1978-79	122
45	Current and Other Funds for 1978-79	123
46	Student Tuition, Fees and Expenses for 1978-79	124
	Faculty and Board of Trustees for 1978-79	125
47	Library Collection for 1978-79	126

RESOURCES

UNIVERSITY OF
TAMU
LIBRARY
SERIALS
48
T

RESOURCES

<u>Table</u>		<u>Page</u>
40	Revenues, Expenditures and Assets for Fiscal Year, 1978-79	119
41	Current and Plant Funds for Fiscal Year, 1978-1979	121
42	Student Tuition, Fees and Charges for the 1979-1980 Academic Year	122
	Room and Board Plans for the Academic Year	122
43	Library Components for 1979-1980	123

UNIVERSITY OF
TAMPA
LIBRARY
SERIALS
148
T

TABLE 40

REVENUES, EXPENDITURES AND ASSETS FOR
FISCAL YEAR, 1978-79

DESCRIPTION OF FINANCIAL STATISTICS	AMOUNT (IN DOLLARS)
CURRENT FUNDS REVENUES BY SOURCES	
TUITION & FEES	\$2,240,656
STATE	11,926,090
GOVERNMENT GRANTS & CONTRACTS	
FEDERAL, UNRESTRICTED	27,549
FEDERAL, RESTRICTED	2,144,203
STATE, UNRESTRICTED	13,685
STATE, RESTRICTED	93,954
LOCAL, UNRESTRICTED	84
LOCAL, RESTRICTED	5,611
PRIVATE GIFTS, GRANTS & CONTRACTS	
UNRESTRICTED	
RESTRICTED	135,555
ENDOWMENT INCOME	
UNRESTRICTED	13,018
RESTRICTED	37,590
SALES & SERVICES OF EDUCATIONAL ACTIVITIES	269,286
SALES & SERVICES OF AUXILIARY ENTERPRISES	3,760,701
SALES & SERVICES OF HOSPITALS	
OTHER SOURCES	5,837
INDEPENDENT OPERATIONS	
TOTAL CURRENT FUNDS REVENUE	20,673,819
CURRENT FUNDS EXPENDITURES & MANDATORY TRANSFER	
FUNCTION: EDUCATIONAL & GENERAL	
INSTRUCTION	8,540,141
RESEARCH	112,150
PUBLIC SERVICE	7,509
ACADEMIC SUPPORT (INCLUDING LIBRARIES)	2,202,788
STUDENT SERVICES	855,371
INSTITUTIONAL SUPPORT	1,770,924
OPERATION & MAINTENANCE OF PLANT	2,026,002
SCHOLARSHIPS & FELLOWSHIPS	
AWARDS FROM UNRESTRICTED FUNDS	159,286
AWARDS FROM RESTRICTED FUNDS	1,198,475
EDUCATIONAL & GENERAL MANDATORY TRANSFER	21,541
AUXILIARY ENTERPRISES (INCLUDING MANDATORY TRANSFERS)	3,881,492
HOSPITALS (INCLUDING MANDATORY TRANSFERS)	
INDEPENDENT OPERATIONS (INCLUDING MANDATORY TRANSFERS)	
TOTAL CURRENT FUNDS EXPENDITURES & MANDATORY TRANSFERS	\$20,777,679

148
 UNIVERSITY OF
 ALABAMA
 LIBRARY

TABLE 40 (CONTINUED)
 REVENUES, EXPENDITURES AND ASSETS FOR
 FISCAL YEAR, 1978-79

DESCRIPTION OF FINANCIAL STATISTICS	AMOUNT (IN DOLLARS)
PHYSICAL PLANT ASSETS	
LAND	
BOOK VALUE AT BEGINNING OF YEAR	\$512,281
ADDITIONS DURING YEAR	
DEDUCTIONS DURING YEAR	
BOOK VALUE AT END OF YEAR	512,281
BUILDINGS	
BOOK VALUE AT BEGINNING OF YEAR	25,743,763
ADDITIONS DURING YEAR	2,384,868
DEDUCTIONS DURING YEAR	
BOOK VALUE AT END OF YEAR	28,128,631
EQUIPMENT	
BOOK VALUE AT BEGINNING OF YEAR	6,704,456
ADDITIONS DURING YEAR	48,615
DEDUCTIONS DURING YEAR	
BOOK VALUE AT END OF YEAR	\$6,753,071

UNIVERSITY OF
 TEXAS
 LIBRARY
 148
 T

TABLE 41
 CURRENT AND PLANT FUNDS FOR FISCAL YEAR
 1978-79

ACTIVITY CLASSIFICATION	AMOUNT (IN DOLLARS)
INSTRUCTION	\$8,577,731
ORGANIZED RESEARCH	112,150
PUBLIC SERVICE	9,509
ACADEMIC SUPPORT	2,202,788
STUDENT SERVICES	855,371
INSTRUCTIONAL SUPPORT	1,770,924
PHYSICAL PLANT OPERATIONS	2,005,343
AUXILIARY & INDEPENDENT OPERATIONS	3,760,701
STUDENT FINANCIAL AID	1,379,302
MULTI-ACTIVITY	
TOTAL	\$20,673,819

UNIVERSITY OF CALIFORNIA
 LIBRARY
 148-1

TABLE 42

STUDENT TUITION, FEES AND CHARGES
FOR THE 1979-80 ACADEMIC YEAR

CATEGORY	UNDERGRADUATE		GRADUATE	
	IN-STATE	OUT-OF-STATE	IN-STATE	OUT-OF-STATE
TUITION & ACADEMIC FEES	\$310.00	\$2048.00	\$310.00	\$2048.00
OTHER REQUIRED FEES			185.00	185.00
ATHLETIC FEE	62.00	62.00		
HEALTH SERVICES FEE	63.00	63.00		
CULTURAL SERIES	10.00	10.00		
STUDENT UNION	50.00	50.00		
GENERAL STUDENT ACTIVITY FEE	50.00	50.00		
DEBT SERVICES				
ACCIDENT & SICKNESS INSURANCE	32.25	32.25		
TOTAL TUITION & REEQUIRED FEES	577.25	2315.25	495.00	2233.00

ROOM AND BOARD PLANS FOR THE ACADEMIC
YEAR

	PER YEAR	PER YEAR
DORMITORY ROOM RENT	\$615.00	\$592.00
BOARD PLANS (7-DAY)	640.00	

UNIVERSITY
 LIBRARY
 148 T

TABLE 43
LIBRARY COMPONENTS, FALL 1979

LIBRARY COMPONENTS	AMOUNT
PERIODICALS & LIBRARY COLLECTIONS	
CURRENT PERIODICAL SUBSCRIPTIONS	3,508
LIBRARY COLLECTION	
BOOKSTOCK	
NUMBER OF VOLUMES	434,650
NUMBER OF TITLES (EXCLUDING DUPLICATE COPIES)	299,360
SEPARATE GOVERNMENT DOCUMENTS COLLECTION	62,245
MICROFORMS-ALL TYPES	
NUMBER OF BOOK TITLES REPRESENTED BY MICROFORMS	130,242
NUMBER OF PERIODICAL TITLES REPRESENTED BY MICROFORM	350
NUMBER OF PHYSICAL UNITS OF MICROFORMS NOT REPORTED ABOVE	297
PERIODICALS & AUDIOVISUAL MATERIALS-NUMBER OF TITLES	26,530
ALL OTHER LIBRARY MATERIALS, INCLUDING UNBOUND NON-CURRENT	34,503
LIBRARY STAFF	
NUMBER OF LIBRARIANS, FULL-TIME	22
NUMBER OF TECHNICAL, CLERICAL, & OTHER SUPPORTING STAFF	
ON LIBRARY BUDGET, FULL-TIME	20
LIBRARY OPERATING EXPENDITURES	
SALARIES & WAGES	\$566,017
FRINGE BENEFITS	85,372
WAGES OF STUDENTS ON AN HOURLY BASIS, CHARGED TO THE LIBRARY	12,537
SUPPLIES & MATERIALS	
BOOKS	291,770
PERIODICALS	127,698
MICROFORMS	44,143
AUDIOVISUAL MATERIALS	18,883
ALL OTHER LIBRARY MATERIALS (INCLUDING AUDIOVISUAL MATERIALS)	44,924
BINDING & REBINDING	14,071
ALL OTHER OPERATING EXPENDITURES	43,649
TOTAL LIBRARY OPERATING EXPENDITURES	\$1,249,064

UNIVERSITY OF
 CALIFORNIA
 LIBRARY
 148-1

APPENDIX

The data used in this book were extrapolated from annual North Carolina Higher Education Data survey forms (NCHED), The University of North Carolina Higher Education General Information Survey forms (HEGIS) and the Office for Civil Rights (OCR) reports. The sources of basic data for each section are listed below.

ENROLLMENT

- NCHED A-1.1 Resident Credit Enrollment, Fall 1968-1979
- OCR 2300-2.3 Fall Enrollment and Compliance Report of Institutions of Higher Education, 1976-1979
- NCHED A-1.6 Survey of Enrollment by Age, Fall 1975-1979
- NCHED A-1.3 "Home Base" of Students, Fall 1968-1979

ADMISSIONS

- OCR 5000-B1 Students in Institutions of Higher Education - Applications, Acceptances and Actual Enrollment, Fall 1979
- NCHED A-4 Admission Practices, Fall 1979
- NCHED A-1.2 New Undergraduate Transfer Students, Fall 1968-1979
- NCHED A-7 Student Retention Data Survey, Fall 1979

DEGREES CONFERRED

- HEGIS 2300-2.1 Degrees and Other Formal Awards Conferred, 1967/68 - 1979-80
- NTE Yearly Reports to the Education Department, 1972-1979

FINANCIAL AID

- NCHED A-10 Student Financial Aid Summary, Fall 1979
- OCR-4000B3 Financial Assistance to Students in Institutions of Higher Education, Fall 1979

UNIVERSITY OF NORTH CAROLINA
LIBRARY
148-1

ALL INSTRUCTIONAL FACULTY

HEGIS 2300-3 Salaries, Tenure and Fringe Benefits of Full-Time Instructional Faculty, 1968/69 - 1979-80

Separate Analyses done by the Office of Institutional Studies

FULL-TIME INSTRUCTIONAL FACULTY

HEGIS 2300-3 Salaries, Tenure and Fringe Benefits of Full-Time Instructional Faculty, 1968/69 - 1979-80

Separate Analyses done by the Office of Institutional Studies

FACULTY AND STAFF

OCR-5000A1A Employees in Institutions of Higher Education, Fall 1979

OCR-5000A1B New Employees in Institutions of Higher Education, Fall 1979

OCR-5000A3 Retirements, Resignations and Dismissals of Employees in Institutions of Higher Education, Fall 1979

OCR-5000A4 Promotions of Employees in Institutions of Higher Education, Fall 1979

RESOURCES

NCHED A-11 Report on Sources and Uses of University Current and Plant Funds, Fiscal Year 1978-1979

HEGIS 2300-4 Financial Statistics of Institutions of Higher Education for Fiscal Year Ending 1979

NCHED A-6 College and University Libraries, Fall 1979

UNIVERSITY
LIBRARY
SERIALS
48
14-1