

AI Library Guide

In this presentation, I'll introduce the AI library guide I recently developed. You'll learn about essential articles, books, associations, journals, AI detection tools, and citation resources, along with a brief discussion on AI's challenges.

- **Presented Online via Zoom by Nurhak Tuncer Bayramli**
For Faculty - Teaching and Learning Center Workshop Series
November 14th at 12pm – Fall 2023



Library Resources for AI

Articles

Explore a vast collection of articles covering various AI topics, from machine learning algorithms to natural language processing.

Example Article:

Dagmar Mercedes Heeg & Lucy Avraamidou (2023) The use of Artificial intelligence in school science: a systematic literature review, Educational Media International, 60:2, 125-150, DOI: [10.1080/09523987.2023.2264990](https://doi.org/10.1080/09523987.2023.2264990)

Books

Dive deep into the world of AI with our extensive book collection, featuring titles that provide comprehensive insights and practical knowledge.

Example Book:

[AI in Learning: Designing the Future](#) by Niemi, Hannele (editor) Pea, Roy D. (editor) Lu, Yu (editor)
ISBN: 9783031096877
Publication Date: 2023

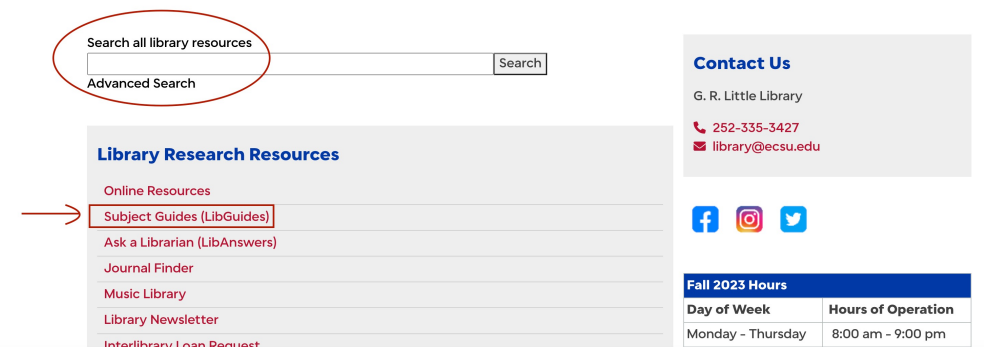
AI (Artificial Intelligence) is predicted to radically

Research Support

Discover how these resources can enhance your research endeavors and support your learning journey in the fascinating field of AI.

G. R. Little Librarians are here to guide you to explore these resources.

Library Catalog



Contact Us
G. R. Little Library
252-335-3427
library@ecsu.edu



Fall 2023 Hours	
Day of Week	Hours of Operation
Monday - Thursday	8:00 am - 9:00 pm

Artificial Intelligence

A library guide created to offer a glimpse into AI-related books and articles chosen from the G.R. Little library's collection. It also includes lists of some AI tools, AI organizations and journals, commonly asked questions and citation check tool links.

- Introduction
- Library Resources
- Frequently Asked Questions
- AI Tools
- AI Citation Check
- AI Organizations and Scholarly Journals
- AI Usage/Prompting/Functions
- Integrating AI in the Classroom and Creating "AI-Aligned" Assignments
- The Black GPT: Introducing The AI Model Trained With Diversity And Inclusivity In Mind
- Where to Learn More
- Scholarly Communications Services at the G.R. Little Library

Welcome to AI Library Guide

Welcome! This guide seeks to review selected artificial intelligence resources accessible through the web and some resources such as books and articles about AI from the G.R. Little Library's collection.

It's crucial to emphasize that this guide remains a work in progress and is not intended to offer a comprehensive resource catalog, nor does it aim to provide definitive answers. Instead, its primary goal is to provide descriptive information. It presents carefully chosen resources intended to assist you.



Librarian



Nurhak Tuncer

AI Recent News

- [Superalignment Fast Grants](#) Dec 14, 2023
We're launching \$10M in grants to support technical research towards the alignment and safety of superhuman AI systems, including weak-to-strong generalization, interpretability, scalable oversight, and more.
- [Practices for Governing Agentic AI Systems](#) Dec 14, 2023
- [Weak-to-strong generalization](#) Dec 14, 2023
We present a new research direction for superalignment, together with promising initial results: can we leverage the generalization properties of deep learning to control strong models with weak supervisors?
- [Partnership with Axel Springer to deepen beneficial use of AI in journalism](#) Dec 13, 2023
Axel Springer is the first publishing house globally to partner with us on a deeper integration of journalism in AI technologies.
- [Sam Altman returns as CEO, OpenAI has a new initial board](#) Nov 29, 2023
Mira Murati as CTO, Greg Brockman returns as President. Read messages from CEO Sam Altman and board chair Bret Taylor.
- [OpenAI announces leadership transition](#) Nov 17, 2023
- [OpenAI Data Partnerships](#) Nov 9, 2023
Working together to create open-source and private datasets for AI training.

[Website](#) | [Feed](#)

Scholarly Communications Services at the G.R. Little Library

A guide on scholarly communication services and topics including copyright, open access, author rights, digital archiving and more.

Welcome

Share Your Scholarship

Digital Repository Submission/Consent Form

Non-exclusive Distribution Terminology Defined

Open Educational Resources (OERs)

Open Access Scholarly Publishing

Creative Commons Licenses

Artificial Intelligence in Scholarly Communications [↗](#)

Welcome

In this library guide you will find information and resources related to scholarly communication services and topics. The goal is to follow trending and newly emerging library services in the 21st century to connect with the mission and vision of the Elizabeth City State University in enhancing teaching and learning and create a positive impact on scholarly research in society.

At G.R. Little Library, librarians offer a diverse range of services to support the ECSU community. They assist in setting up institutional repositories, guide on open access publishing, and help manage research data. Additionally, they provide insights on copyright, measure the impact of scholarly works, and help establish unique scholarly identities. Their expertise extends to digital scholarship, research skills training, and preserving scholarly outputs. Furthermore, they champion open access, educate on scholarly publishing dynamics, and potentially offer collaborative spaces equipped with specialized tools and technology.

Libraries' Response to Scholarly Communication in the Digital Era

Academic libraries are becoming increasingly involved in scholarly communication in the twenty-first century. The digital era presents both challenges and opportunities for libraries and librarians. [This article](#) presents a review of the professional library literature on scholarly communication, providing an overview of the current scholarly communication landscape, including institutional repositories, new roles for academic librarians and subject specialists, and opportunities for further research.

Scholarly Communications Toolkit from ACRL

The [ACRL Scholarly Communication Toolkit](#) was initially launched in 2005 by the ACRL Research and Scholarly Environment Committee (formerly the Scholarly Communication Committee) to support advocacy efforts designed to transform the scholarly communication landscape.

The toolkit is an educational resource primarily directed to librarians to assist them with:

1. integrating a scholarly communication perspective into library operations and programs and
2. preparing presentations on scholarly communication issues for administrators, faculty, staff, students, or other librarians.

The Toolkit includes short overview essays on key scholarly communication issues and highly selective lists of other sources of information on these topics, and copies of presentations, handouts, and similar material including materials from the ACRL Workshop "[Scholarly Communication: From Understanding to Engagement](#)."

Librarian



Nurhak Tuncer

AI Detection Tools

Promote **Accountability!**

Discover the value of using these tools in holding AI models accountable and mitigating potential negative consequences.

1

Identify Biases

Learn how AI detection tools help uncover biases and inaccuracies to ensure fairness, transparency, and ethical AI implementation.

2

3

Drive Ethical AI

Understand the crucial role of AI detection tools in fostering the development and deployment of more ethical and inclusive AI systems.

Citation Resources

1 AI-specific Citation Styles

Explore citation resources tailored to AI research, providing guidelines and examples for citing AI models, algorithms, and datasets.

2 Ensuring Academic Integrity

Understand the importance of proper citation in AI research to uphold academic integrity, acknowledge contributions, and promote scholarly discourse.

3 Simplifying Citations

Discover tools that can assist researchers in efficiently generating accurate and consistent citations, streamlining the research process.



AI Research Ethics

1

Ethical Considerations

Explore the ethical implications of AI research, including issues of bias, privacy, and algorithmic transparency.

2

Responsible AI Practices

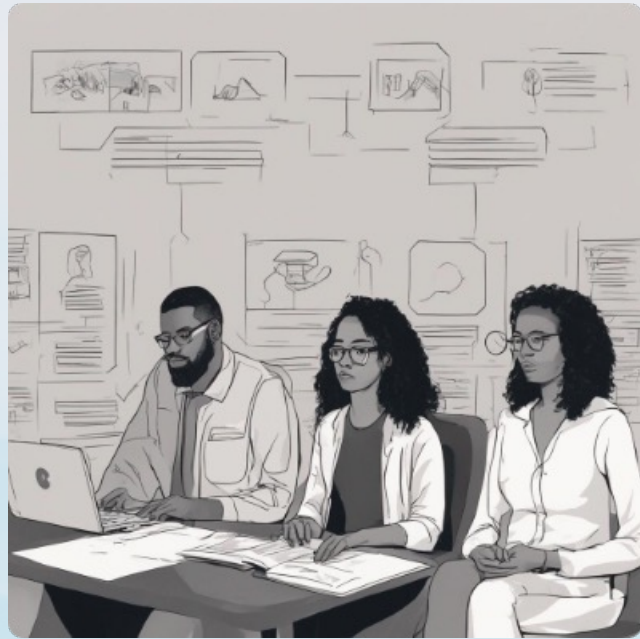
Learn about guidelines and frameworks that promote responsible AI development and deployment.

3

Addressing Social Impact

Discover how AI research can contribute to positive social change and mitigate potential harms.

Addressing Biases and Cultural Data Omission in AI Tools



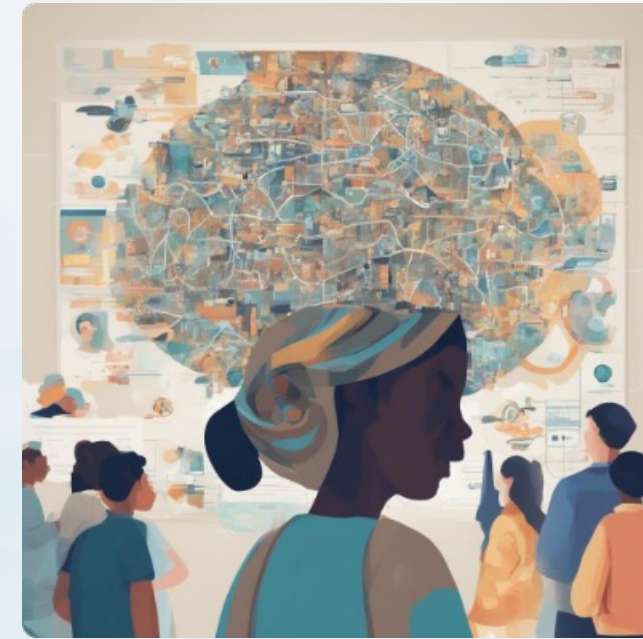
Educating Students

Emphasize the need for educating students about biases and cultural data omission in AI models, fostering critical thinking and awareness.



Human Oversight

Highlight the role of human oversight in mitigating bias, ensuring the responsible use of AI, and promoting fair representation.



Embracing Diversity

Discuss the importance of diverse and inclusive datasets, enabling AI models to be more accurate and representative of all communities.

Conclusion

- Significance of human oversight,
- The role of library resources for research,
- The invaluable assistance of librarians in implementing AI ethically and effectively in the classroom

